

Data Path : Z:\pestpcbsrv\HPCHEM1\ECD\_P\Data\PP093021\  
 Data File : PP039699.D  
 Signal(s) : Signal #1: ECD1A.CH Signal #2: ECD2B.CH  
 Acq On : 30 Sep 2021 23:38  
 Operator : AJ\MA  
 Sample : M3988-01MS  
 Misc :  
 ALS Vial : 28 Sample Multiplier: 1

Instrument :  
 ECD\_P  
 ClientSampleId :  
 OR-03-092921MS

Integration File signal 1: autoint1.e  
 Integration File signal 2: autoint2.e  
 Quant Time: Oct 01 01:56:33 2021  
 Quant Method : Z:\pestpcbsrv\HPCHEM1\ECD\_P\methods\PP092421.M  
 Quant Title : GC EXTRACTABLES  
 QLast Update : Sat Sep 25 01:28:12 2021  
 Response via : Initial Calibration  
 Integrator: ChemStation 6890 Scale Mode: Small noise peaks clipped

Volume Inj. : 2 µl  
 Signal #1 Phase : ZB-MR1 Signal #2 Phase: ZB-MR2  
 Signal #1 Info : 30Mx0.32mmx 0.50µ Signal #2 Info : 30M x 0.32mm x 0.25µm

Compound	RT#1	RT#2	Resp#1	Resp#2	ng/ml	ng/ml
-----						
System Monitoring Compounds						
1) SA Tetrachlo...	4.907	3.996	647232	347864	20.445	21.349
2) SA Decachlor...	10.929	9.330	480994	428882	22.172	19.626
Target Compounds						
3) L1 AR-1016-1	6.229	5.260	463695	320869	432.479	445.229
4) L1 AR-1016-2	6.252	5.280	669267	444431	426.646	450.435
5) L1 AR-1016-3	6.319	5.473	410573	247510	419.301	453.993
6) L1 AR-1016-4	6.426	5.525	319181	197252	407.645	445.175
7) L1 AR-1016-5	6.741	5.756	343852	251056	464.571	454.119
31) L7 AR-1260-1	7.919	6.857	590771	481295	480.743	446.922
32) L7 AR-1260-2	8.184	7.054	732557	570442	529.139	445.381
33) L7 AR-1260-3	8.550	7.211	403390	522536	487.708	434.346
34) L7 AR-1260-4	8.781	7.696	501871	389808	503.398	418.548
35) L7 AR-1260-5	9.107	7.944	936189	900114	494.035	419.647

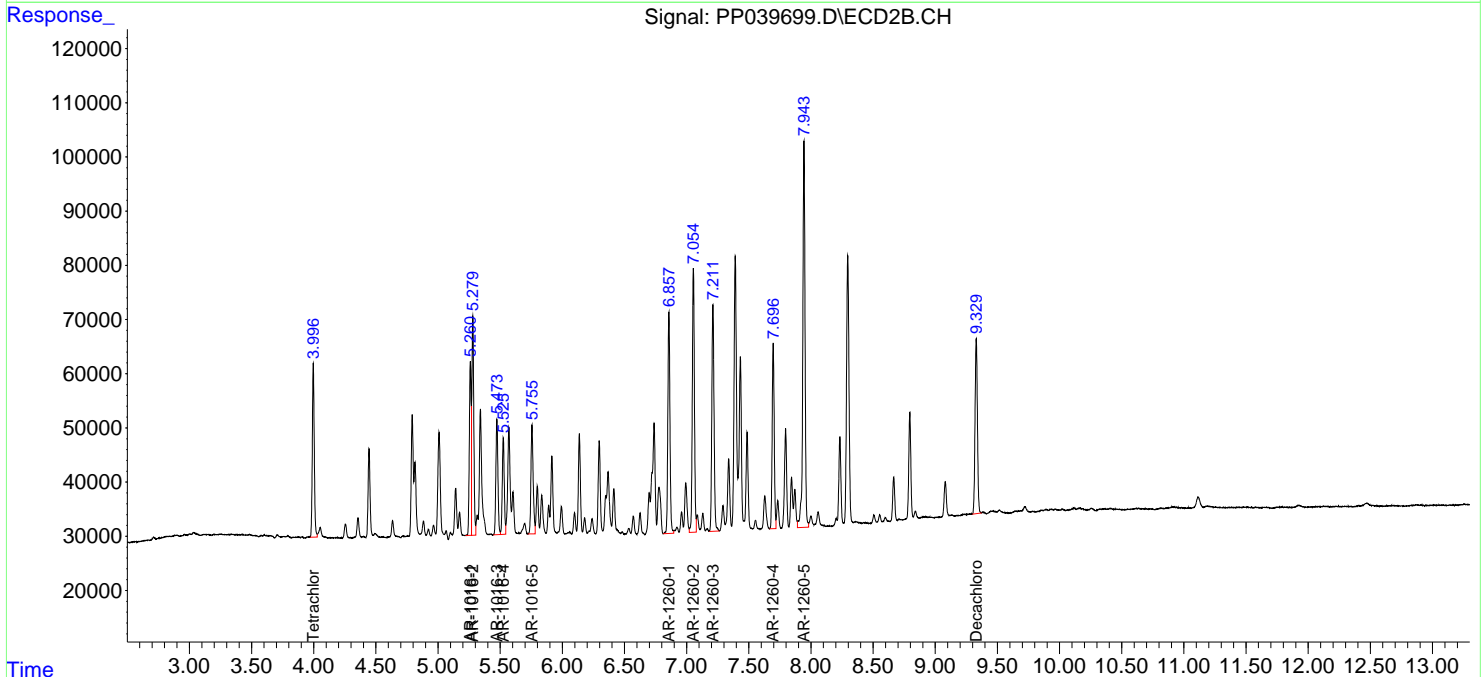
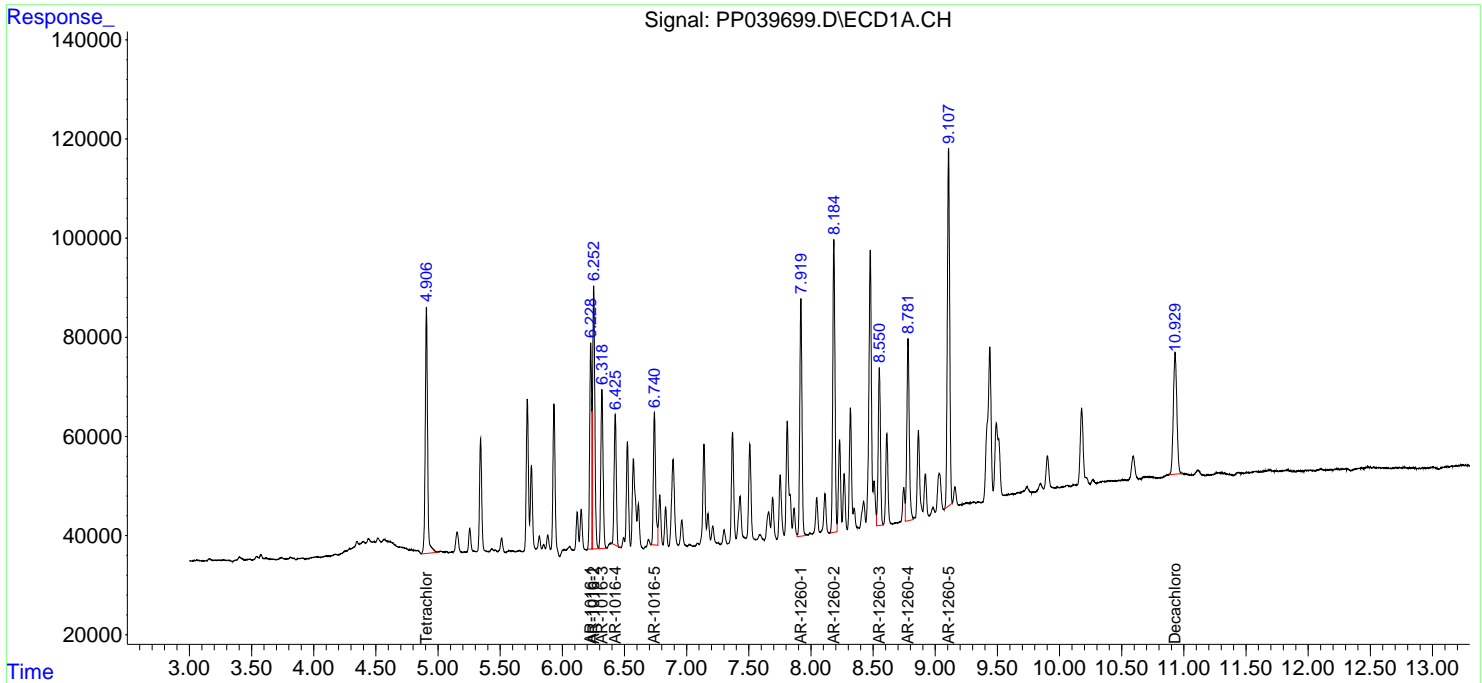
(f)=RT Delta > 1/2 Window (#)=Amounts differ by > 25% (m)=manual int.

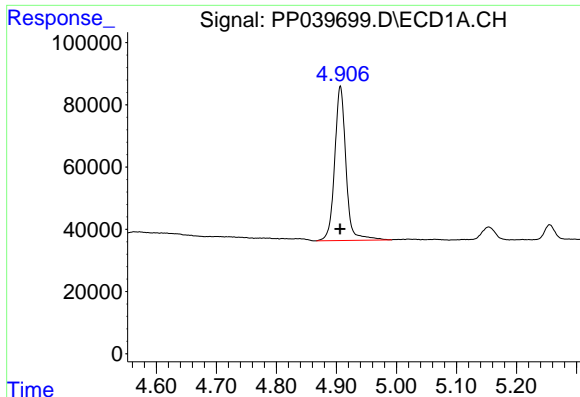
Data Path : Z:\pestpcbsrv\HPCHEM1\ECD\_P\Data\PP093021\  
 Data File : PP039699.D  
 Signal(s) : Signal #1: ECD1A.CH Signal #2: ECD2B.CH  
 Acq On : 30 Sep 2021 23:38  
 Operator : AJ\MA  
 Sample : M3988-01MS  
 Misc :  
 ALS Vial : 28 Sample Multiplier: 1

Instrument :  
 ECD\_P  
 ClientSampled :  
 OR-03-092921MS

Integration File signal 1: autoint1.e  
 Integration File signal 2: autoint2.e  
 Quant Time: Oct 01 01:56:33 2021  
 Quant Method : Z:\pestpcbsrv\HPCHEM1\ECD\_P\methods\PP092421.M  
 Quant Title : GC EXTRACTABLES  
 QLast Update : Sat Sep 25 01:28:12 2021  
 Response via : Initial Calibration  
 Integrator: ChemStation 6890 Scale Mode: Small noise peaks clipped

Volume Inj. : 2 µl  
 Signal #1 Phase : ZB-MR1 Signal #2 Phase: ZB-MR2  
 Signal #1 Info : 30Mx0.32mmx 0.50µ Signal #2 Info : 30M x 0.32mm x 0.25µm

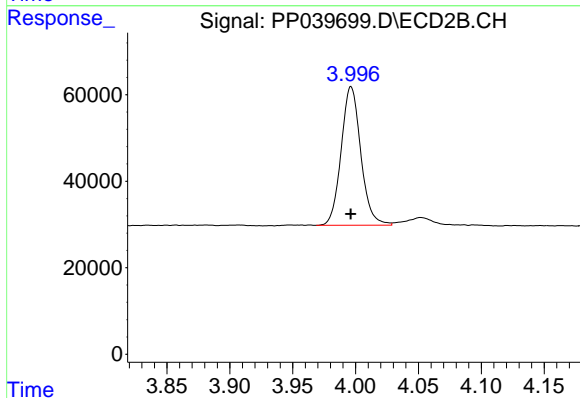




#1 Tetrachloro-m-xylene

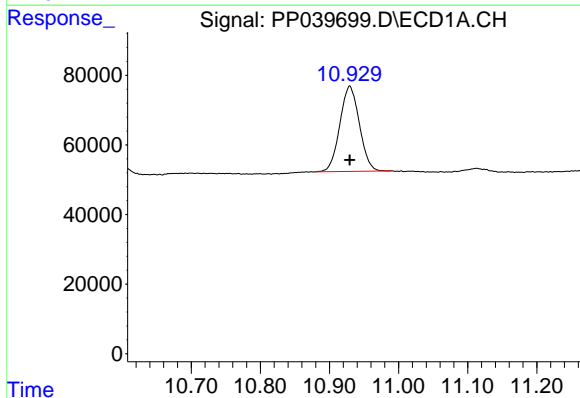
R.T.: 4.907 min  
 Delta R.T.: 0.000 min  
 Response: 647232  
 Conc: 20.44 ng/ml

Instrument :  
 ECD\_P  
 ClientSampleId :  
 OR-03-092921MS



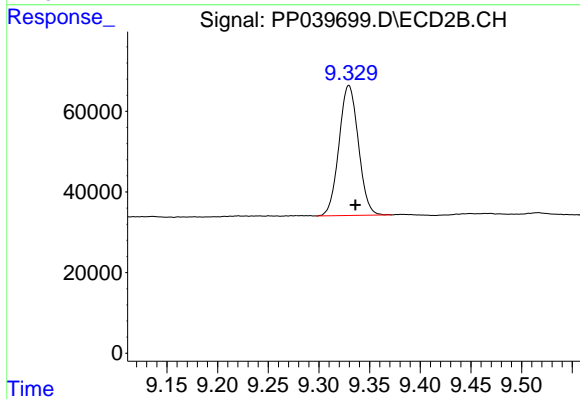
#1 Tetrachloro-m-xylene

R.T.: 3.996 min  
 Delta R.T.: 0.000 min  
 Response: 347864  
 Conc: 21.35 ng/ml



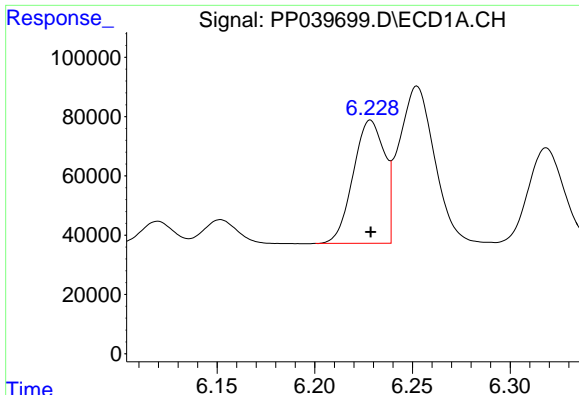
#2 Decachlorobiphenyl

R.T.: 10.929 min  
 Delta R.T.: 0.000 min  
 Response: 480994  
 Conc: 22.17 ng/ml



#2 Decachlorobiphenyl

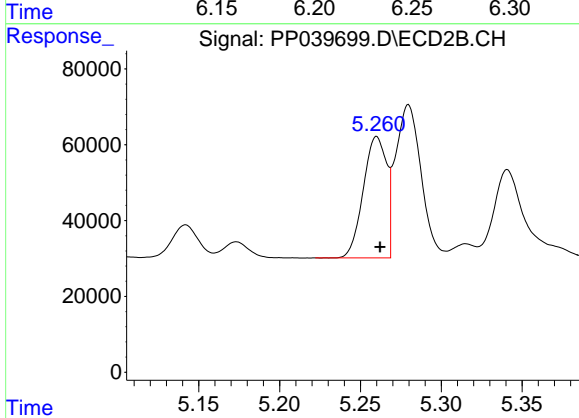
R.T.: 9.330 min  
 Delta R.T.: -0.007 min  
 Response: 428882  
 Conc: 19.63 ng/ml



#3 AR-1016-1

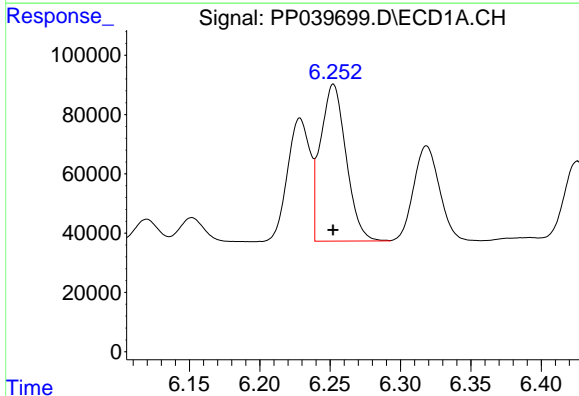
R.T.: 6.229 min  
 Delta R.T.: 0.000 min  
 Response: 463695  
 Conc: 432.48 ng/ml

Instrument :  
 ECD\_P  
 ClientSampleId :  
 OR-03-092921MS



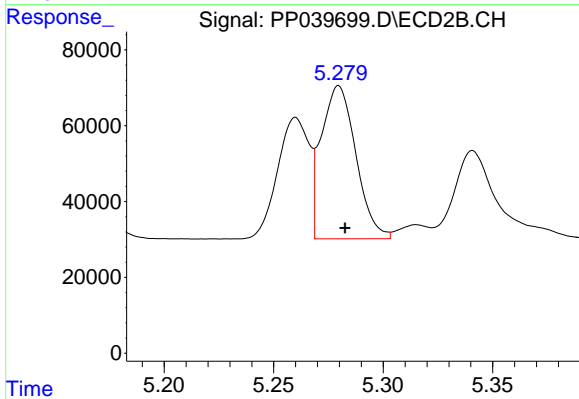
#3 AR-1016-1

R.T.: 5.260 min  
 Delta R.T.: -0.002 min  
 Response: 320869  
 Conc: 445.23 ng/ml



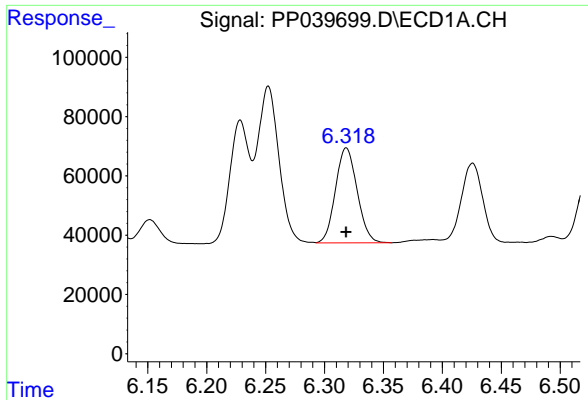
#4 AR-1016-2

R.T.: 6.252 min  
 Delta R.T.: 0.000 min  
 Response: 669267  
 Conc: 426.65 ng/ml



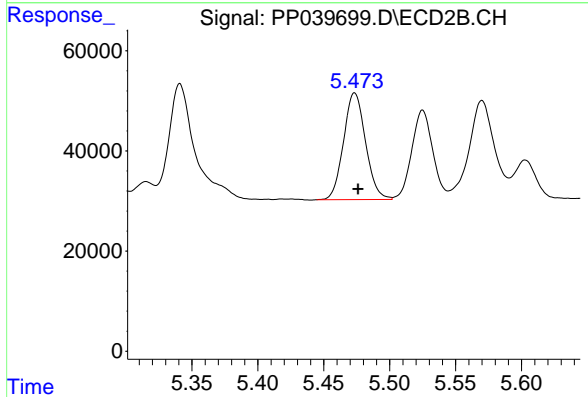
#4 AR-1016-2

R.T.: 5.280 min  
 Delta R.T.: -0.003 min  
 Response: 444431  
 Conc: 450.43 ng/ml

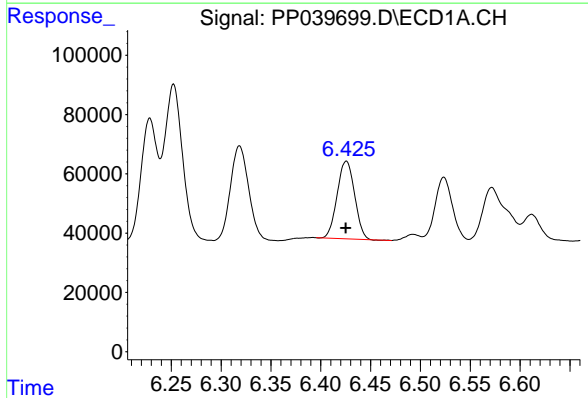


#5 AR-1016-3  
 R.T.: 6.319 min  
 Delta R.T.: 0.000 min  
 Response: 410573  
 Conc: 419.30 ng/ml

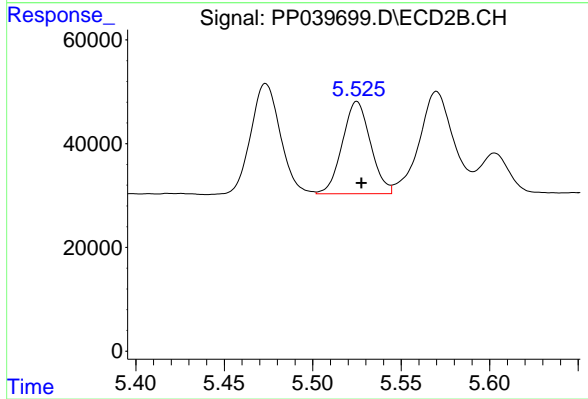
Instrument :  
 ECD\_P  
 ClientSampleId :  
 OR-03-092921MS



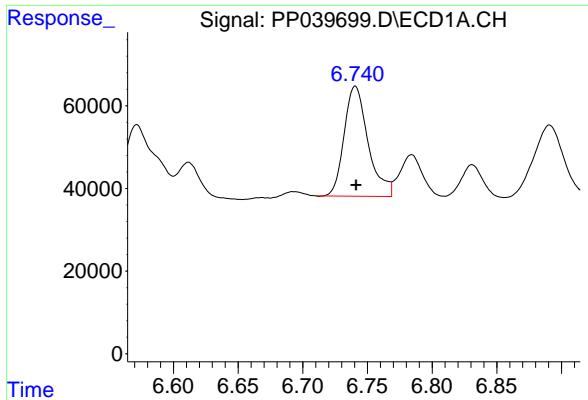
#5 AR-1016-3  
 R.T.: 5.473 min  
 Delta R.T.: -0.003 min  
 Response: 247510  
 Conc: 453.99 ng/ml



#6 AR-1016-4  
 R.T.: 6.426 min  
 Delta R.T.: 0.000 min  
 Response: 319181  
 Conc: 407.64 ng/ml

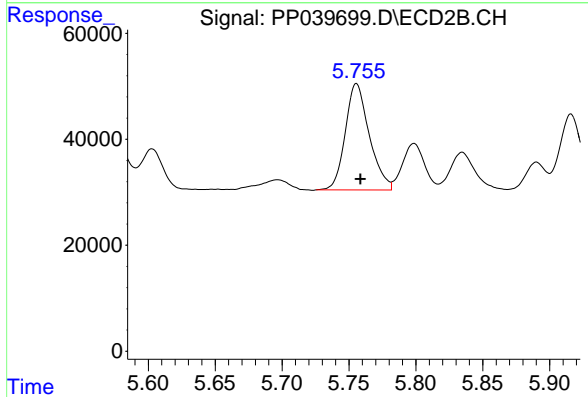


#6 AR-1016-4  
 R.T.: 5.525 min  
 Delta R.T.: -0.003 min  
 Response: 197252  
 Conc: 445.17 ng/ml

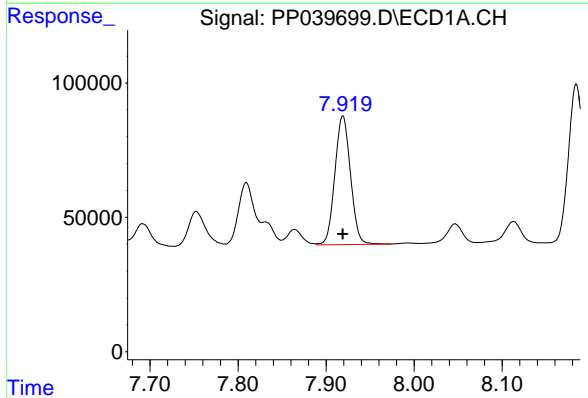


#7 AR-1016-5  
 R.T.: 6.741 min  
 Delta R.T.: 0.000 min  
 Response: 343852  
 Conc: 464.57 ng/ml

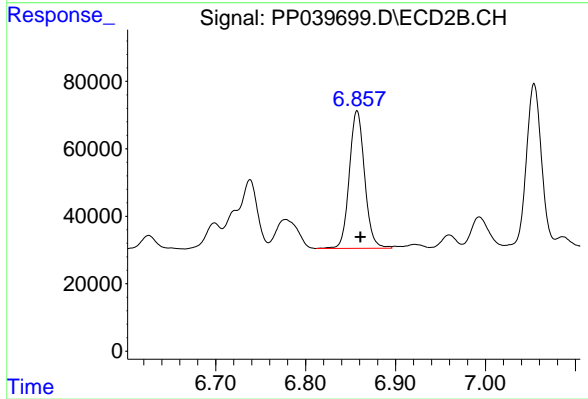
Instrument :  
 ECD\_P  
 ClientSampleId :  
 OR-03-092921MS



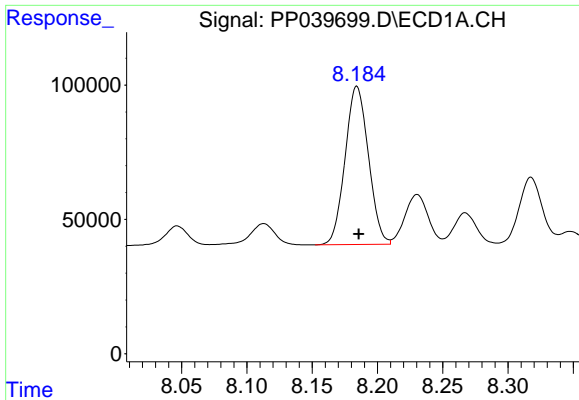
#7 AR-1016-5  
 R.T.: 5.756 min  
 Delta R.T.: -0.003 min  
 Response: 251056  
 Conc: 454.12 ng/ml



#31 AR-1260-1  
 R.T.: 7.919 min  
 Delta R.T.: 0.000 min  
 Response: 590771  
 Conc: 480.74 ng/ml



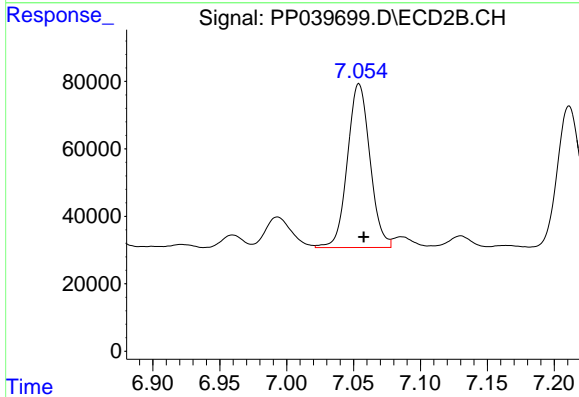
#31 AR-1260-1  
 R.T.: 6.857 min  
 Delta R.T.: -0.004 min  
 Response: 481295  
 Conc: 446.92 ng/ml



#32 AR-1260-2

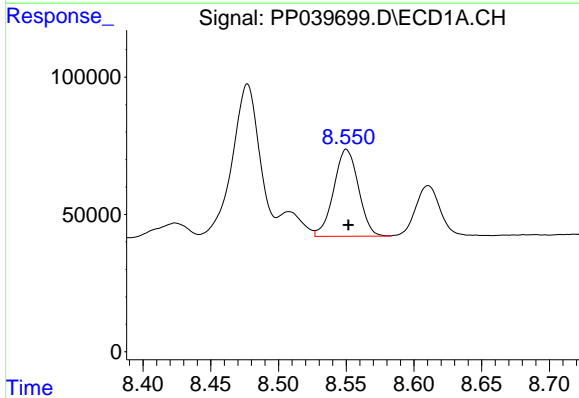
R.T.: 8.184 min  
 Delta R.T.: -0.001 min  
 Response: 732557  
 Conc: 529.14 ng/ml

Instrument :  
 ECD\_P  
 ClientSampleId :  
 OR-03-092921MS



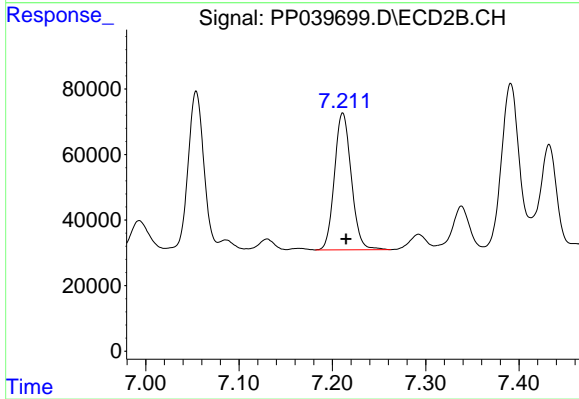
#32 AR-1260-2

R.T.: 7.054 min  
 Delta R.T.: -0.003 min  
 Response: 570442  
 Conc: 445.38 ng/ml



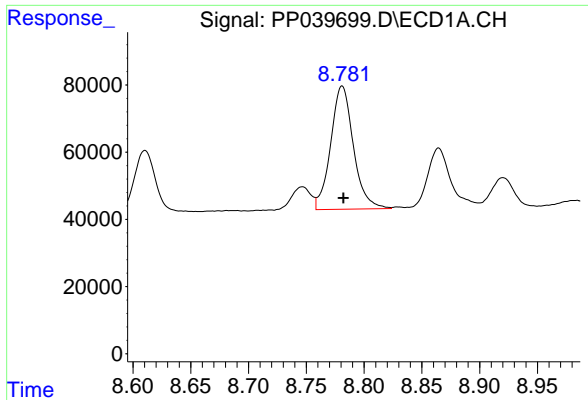
#33 AR-1260-3

R.T.: 8.550 min  
 Delta R.T.: -0.001 min  
 Response: 403390  
 Conc: 487.71 ng/ml



#33 AR-1260-3

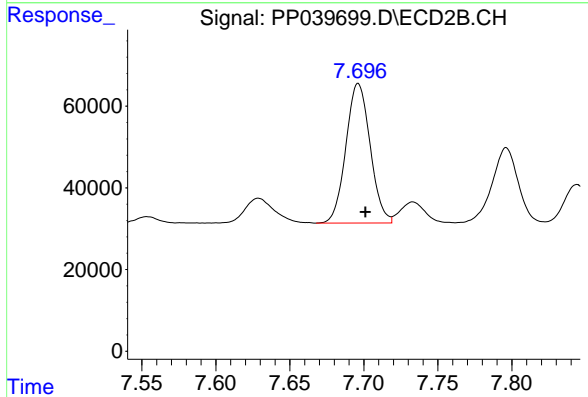
R.T.: 7.211 min  
 Delta R.T.: -0.004 min  
 Response: 522536  
 Conc: 434.35 ng/ml



#34 AR-1260-4

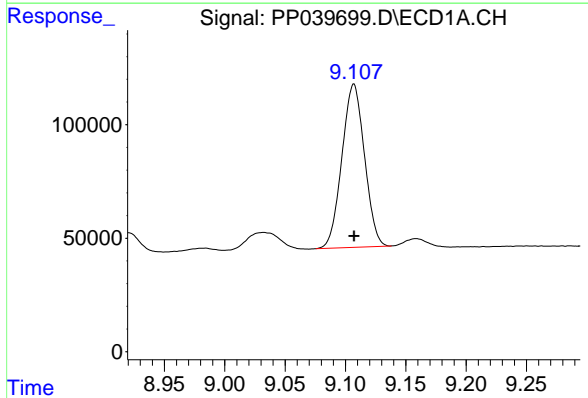
R.T.: 8.781 min  
 Delta R.T.: -0.001 min  
 Response: 501871  
 Conc: 503.40 ng/ml

Instrument :  
 ECD\_P  
 ClientSampleId :  
 OR-03-092921MS



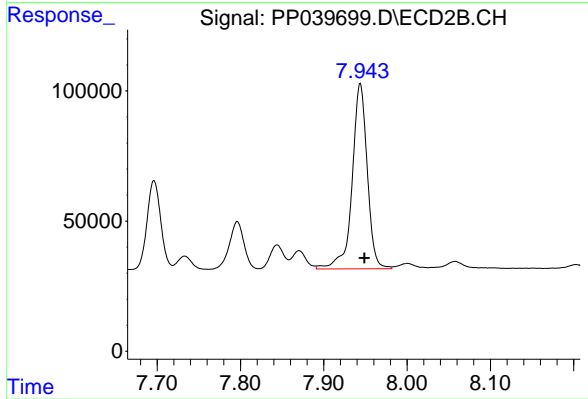
#34 AR-1260-4

R.T.: 7.696 min  
 Delta R.T.: -0.005 min  
 Response: 389808  
 Conc: 418.55 ng/ml



#35 AR-1260-5

R.T.: 9.107 min  
 Delta R.T.: 0.000 min  
 Response: 936189  
 Conc: 494.04 ng/ml



#35 AR-1260-5

R.T.: 7.944 min  
 Delta R.T.: -0.005 min  
 Response: 900114  
 Conc: 419.65 ng/ml