

Data Path : Z:\pestpcbsrv\HPCHEM1\ECD_P\Data\PP093022\
 Data File : PP051810.D
 Signal(s) : Signal #1: ECD1A.ch Signal #2: ECD2B.ch
 Acq On : 30 Sep 2022 19:44
 Operator : YP\AJ
 Sample : AR1660CCC500
 Misc :
 ALS Vial : 3 Sample Multiplier: 1

Instrument :
 ECD_P
 ClientSampleId :
 AR1660CCC500

Integration File signal 1: autoint1.e
 Integration File signal 2: autoint2.e
 Quant Time: Oct 03 10:49:57 2022
 Quant Method : Z:\pestpcbsrv\HPCHEM1\ECD_P\methods\PP091922.M
 Quant Title : GC EXTRACTABLES
 QLast Update : Tue Sep 20 14:37:22 2022
 Response via : Initial Calibration
 Integrator: ChemStation

Volume Inj. : 2 µl
 Signal #1 Phase : ZB-MR1 Signal #2 Phase: ZB-MR2
 Signal #1 Info : 30Mx0.32mmx 0.50µ Signal #2 Info : 30M x 0.32mm x 0.25µm

Compound	RT#1	RT#2	Resp#1	Resp#2	ng/ml	ng/ml

System Monitoring Compounds						
1) SA Tetrachlo...	4.427	3.678	84905074	71250936	47.778	47.169
2) SA Decachlor...	10.246	8.774	65153869	55464192	42.158	46.289
Target Compounds						
3) L1 AR-1016-1	5.600	4.781	30085001	23438192	488.177	470.286
4) L1 AR-1016-2	5.622	4.800	42658011	33271943	493.271	466.066
5) L1 AR-1016-3	5.685	4.980	26893411	18009169	491.516	479.619
6) L1 AR-1016-4	5.784	5.022	21196108	14225560	497.822	468.030
7) L1 AR-1016-5	6.081	5.239	22293574	18578116	489.804	468.650
31) L7 AR-1260-1	7.212	6.287	35855546	34465814	384.080	461.923
32) L7 AR-1260-2	7.470	6.476	42389097	40124858	401.478	453.810
33) L7 AR-1260-3	7.831	6.633	36806197	37828354	476.486	446.036
34) L7 AR-1260-4	8.058	7.110	40360506	30700928	454.814	457.913
35) L7 AR-1260-5	8.381	7.352	67269554	67613359	437.252	457.645

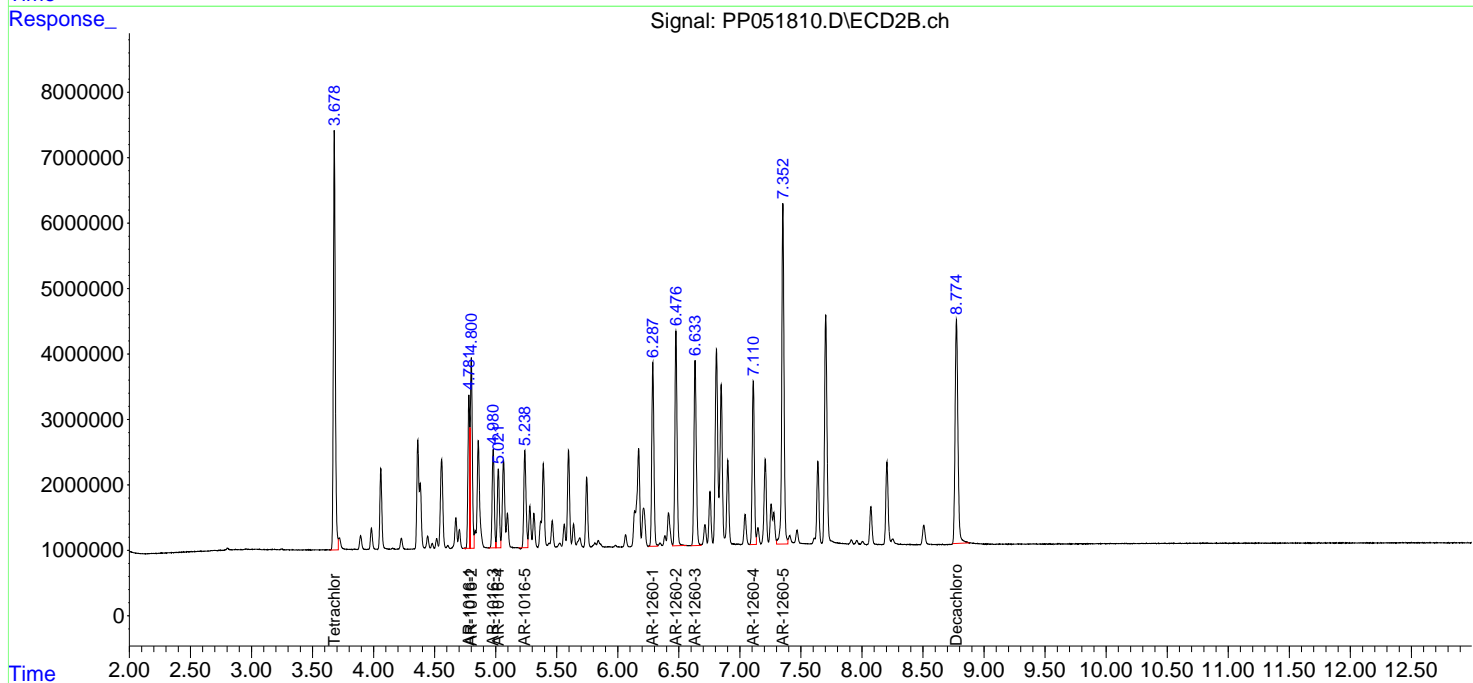
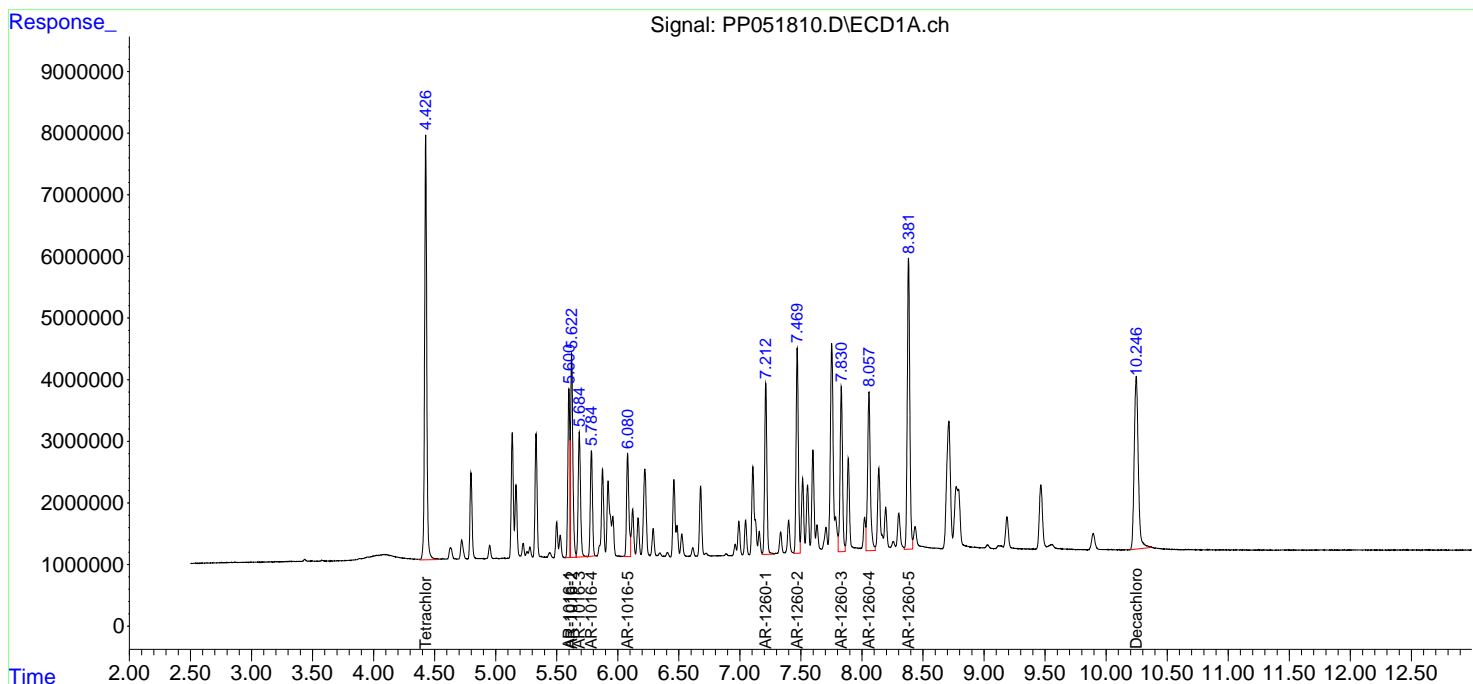
(f)=RT Delta > 1/2 Window (#)=Amounts differ by > 25% (m)=manual int.

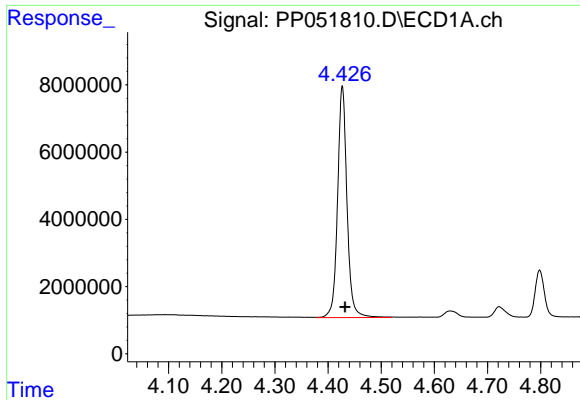
Data Path : Z:\pestpcbsrv\HPCHEM1\ECD_P\Data\PP093022\
 Data File : PP051810.D
 Signal(s) : Signal #1: ECD1A.ch Signal #2: ECD2B.ch
 Acq On : 30 Sep 2022 19:44
 Operator : YP\AJ
 Sample : AR1660CCC500
 Misc :
 ALS Vial : 3 Sample Multiplier: 1

Instrument :
 ECD_P
 ClientSampleId :
 AR1660CCC500

Integration File signal 1: autoint1.e
 Integration File signal 2: autoint2.e
 Quant Time: Oct 03 10:49:57 2022
 Quant Method : Z:\pestpcbsrv\HPCHEM1\ECD_P\methods\PP091922.M
 Quant Title : GC EXTRACTABLES
 QLast Update : Tue Sep 20 14:37:22 2022
 Response via : Initial Calibration
 Integrator: ChemStation

Volume Inj. : 2 µl
 Signal #1 Phase : ZB-MR1 Signal #2 Phase: ZB-MR2
 Signal #1 Info : 30Mx0.32mmx 0.50µ Signal #2 Info : 30M x 0.32mm x 0.25µm

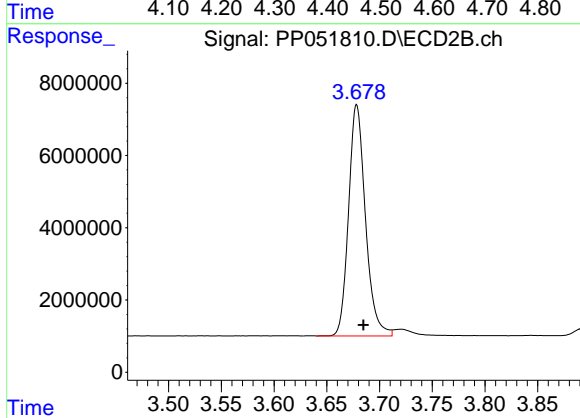




#1 Tetrachloro-m-xylene

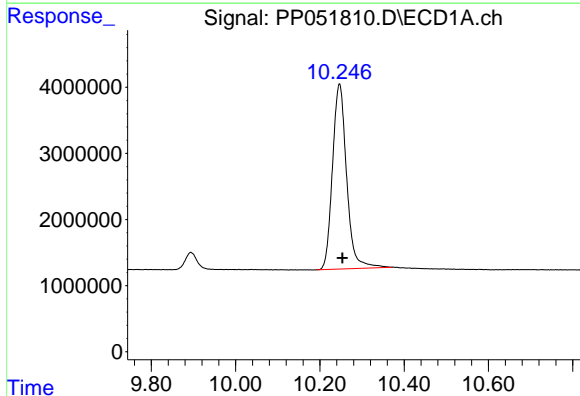
R.T.: 4.427 min
 Delta R.T.: -0.005 min
 Response: 84905074
 Conc: 47.78 ng/ml

Instrument :
 ECD_P
 ClientSampleId :
 AR1660CCC500



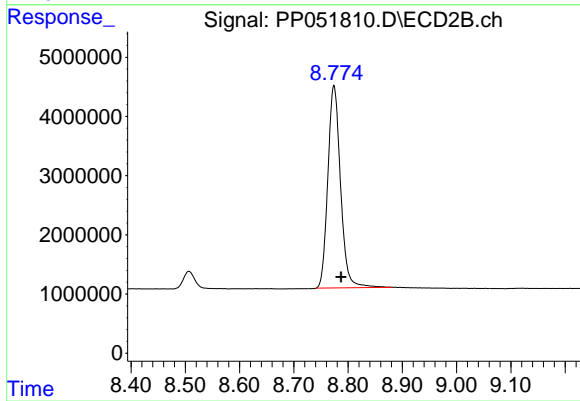
#1 Tetrachloro-m-xylene

R.T.: 3.678 min
 Delta R.T.: -0.006 min
 Response: 71250936
 Conc: 47.17 ng/ml



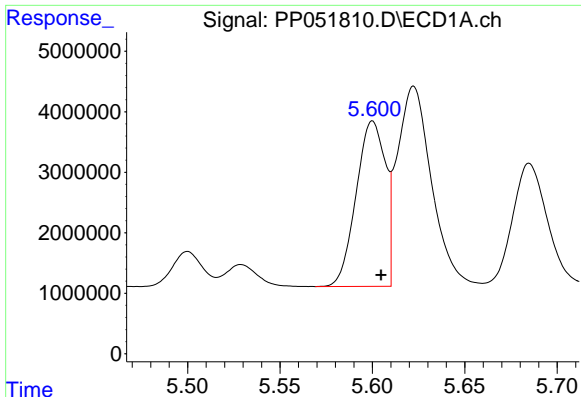
#2 Decachlorobiphenyl

R.T.: 10.246 min
 Delta R.T.: -0.007 min
 Response: 65153869
 Conc: 42.16 ng/ml



#2 Decachlorobiphenyl

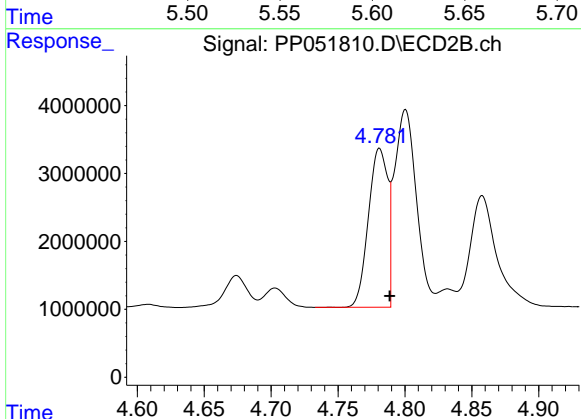
R.T.: 8.774 min
 Delta R.T.: -0.013 min
 Response: 55464192
 Conc: 46.29 ng/ml



#3 AR-1016-1

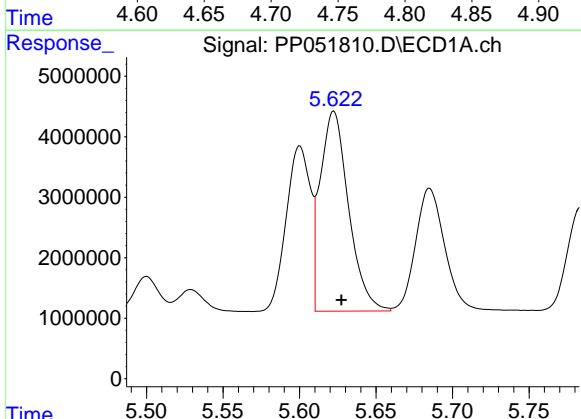
R.T.: 5.600 min
 Delta R.T.: -0.005 min
 Response: 30085001
 Conc: 488.18 ng/ml

Instrument :
 ECD_P
 ClientSampleId :
 AR1660CCC500



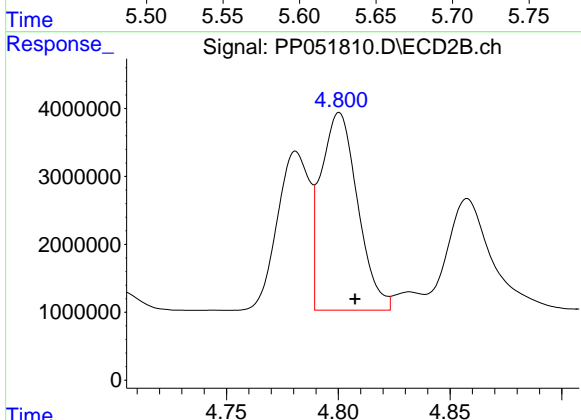
#3 AR-1016-1

R.T.: 4.781 min
 Delta R.T.: -0.008 min
 Response: 23438192
 Conc: 470.29 ng/ml



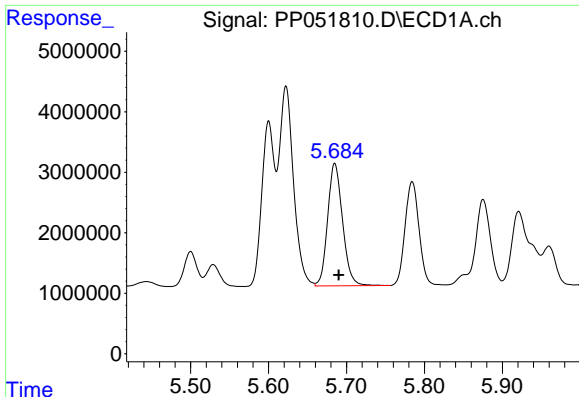
#4 AR-1016-2

R.T.: 5.622 min
 Delta R.T.: -0.005 min
 Response: 42658011
 Conc: 493.27 ng/ml



#4 AR-1016-2

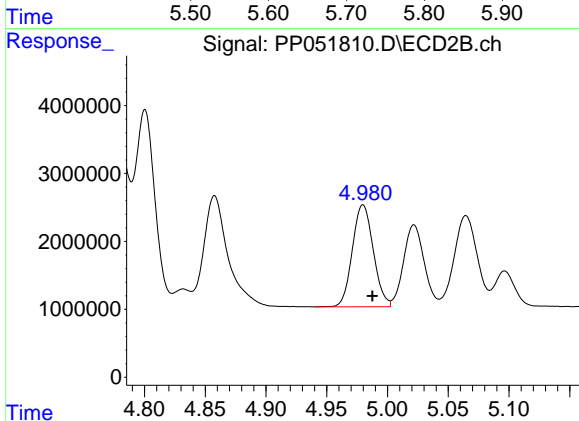
R.T.: 4.800 min
 Delta R.T.: -0.007 min
 Response: 33271943
 Conc: 466.07 ng/ml



#5 AR-1016-3

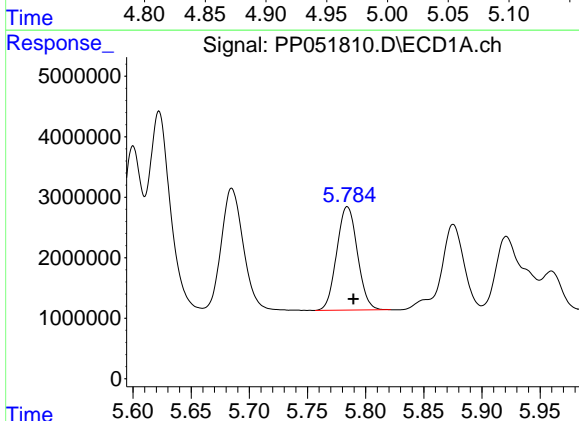
R.T.: 5.685 min
 Delta R.T.: -0.005 min
 Response: 26893411
 Conc: 491.52 ng/ml

Instrument :
 ECD_P
 ClientSampleId :
 AR1660CCC500



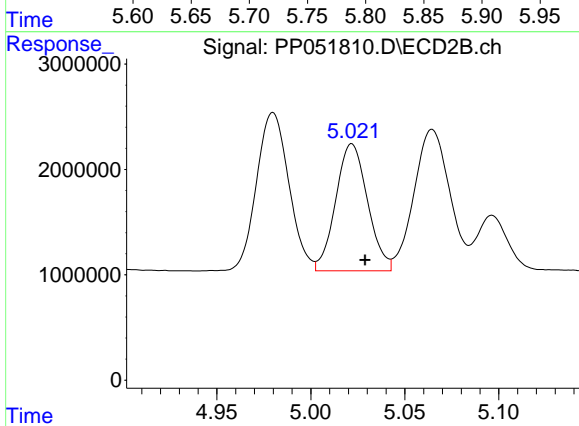
#5 AR-1016-3

R.T.: 4.980 min
 Delta R.T.: -0.008 min
 Response: 18009169
 Conc: 479.62 ng/ml



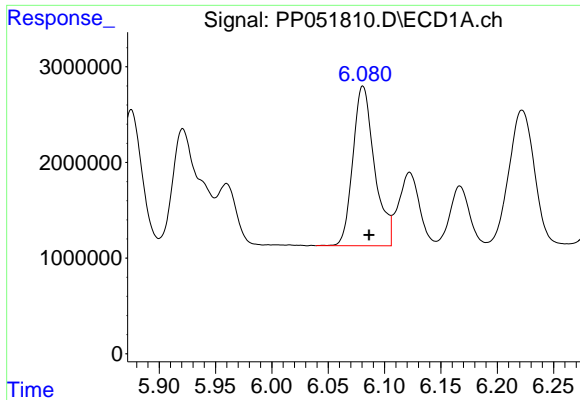
#6 AR-1016-4

R.T.: 5.784 min
 Delta R.T.: -0.005 min
 Response: 21196108
 Conc: 497.82 ng/ml



#6 AR-1016-4

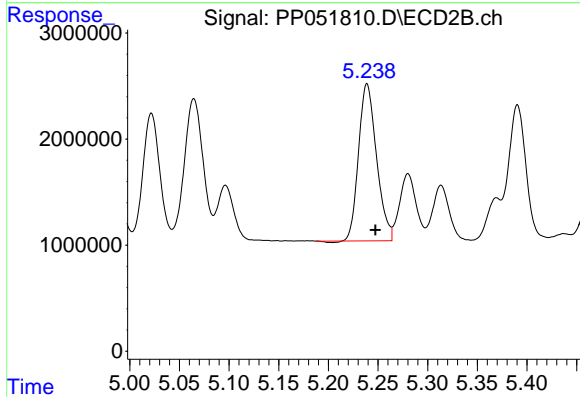
R.T.: 5.022 min
 Delta R.T.: -0.007 min
 Response: 14225560
 Conc: 468.03 ng/ml



#7 AR-1016-5

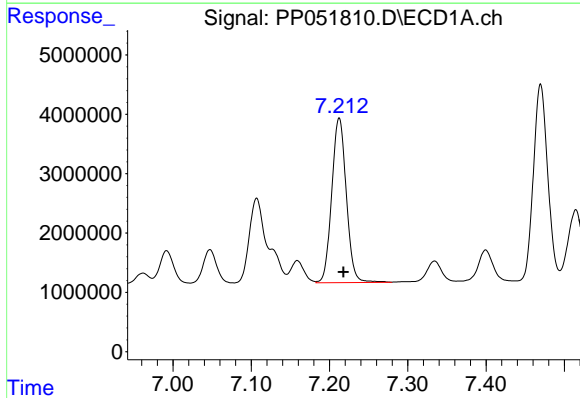
R.T.: 6.081 min
 Delta R.T.: -0.005 min
 Response: 22293574
 Conc: 489.80 ng/ml

Instrument :
 ECD_P
 ClientSampleId :
 AR1660CCC500



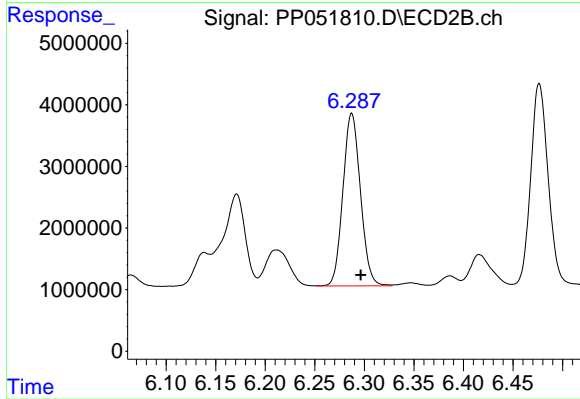
#7 AR-1016-5

R.T.: 5.239 min
 Delta R.T.: -0.008 min
 Response: 18578116
 Conc: 468.65 ng/ml



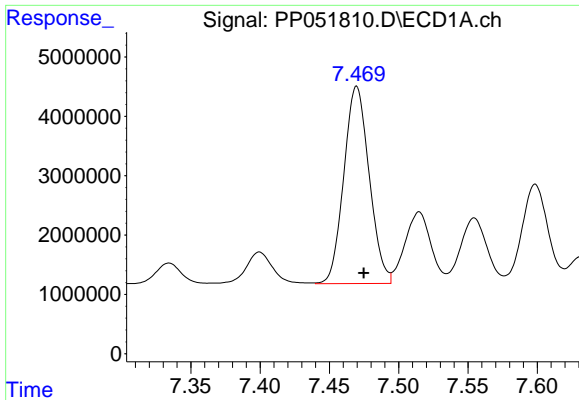
#31 AR-1260-1

R.T.: 7.212 min
 Delta R.T.: -0.005 min
 Response: 35855546
 Conc: 384.08 ng/ml



#31 AR-1260-1

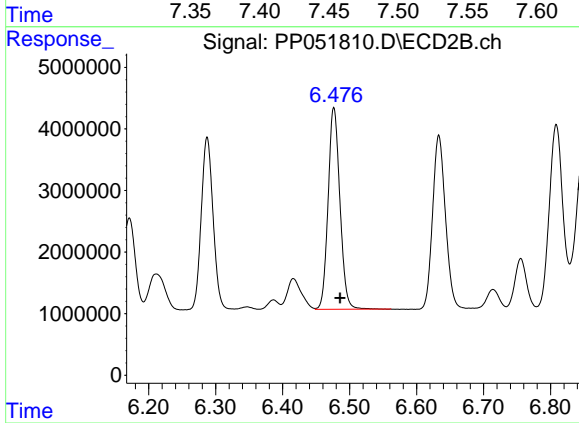
R.T.: 6.287 min
 Delta R.T.: -0.009 min
 Response: 34465814
 Conc: 461.92 ng/ml



#32 AR-1260-2

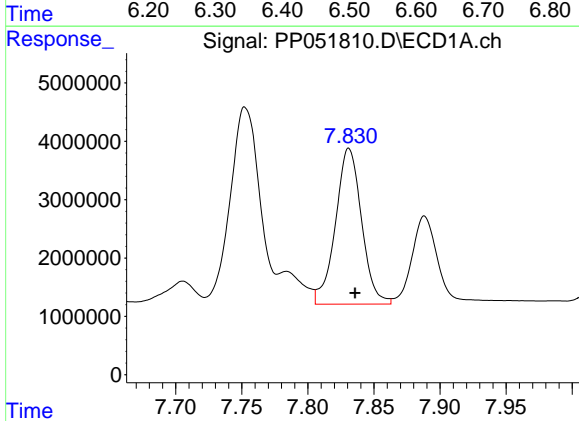
R.T.: 7.470 min
 Delta R.T.: -0.005 min
 Response: 42389097
 Conc: 401.48 ng/ml

Instrument :
 ECD_P
 ClientSampleId :
 AR1660CCC500



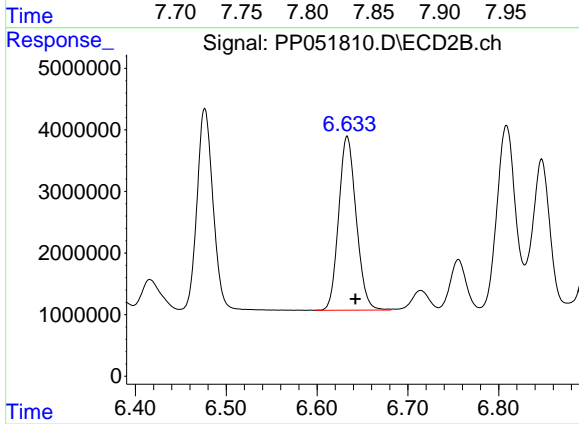
#32 AR-1260-2

R.T.: 6.476 min
 Delta R.T.: -0.009 min
 Response: 40124858
 Conc: 453.81 ng/ml



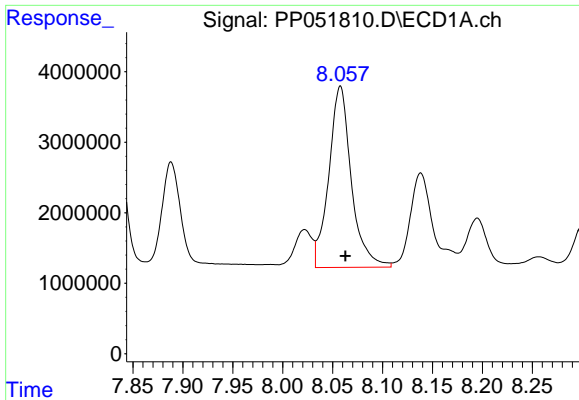
#33 AR-1260-3

R.T.: 7.831 min
 Delta R.T.: -0.005 min
 Response: 36806197
 Conc: 476.49 ng/ml



#33 AR-1260-3

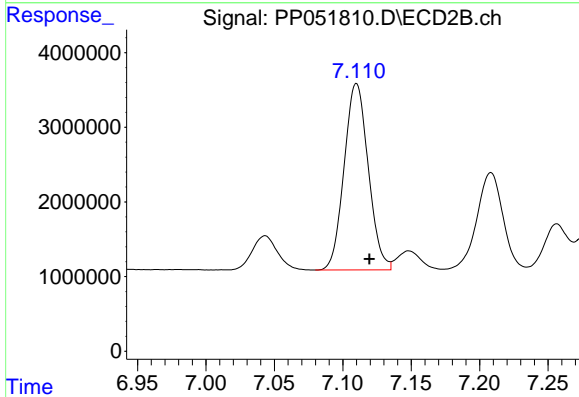
R.T.: 6.633 min
 Delta R.T.: -0.009 min
 Response: 37828354
 Conc: 446.04 ng/ml



#34 AR-1260-4

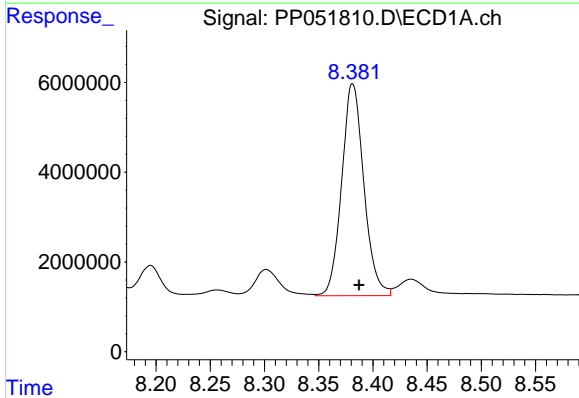
R.T.: 8.058 min
Delta R.T.: -0.005 min
Response: 40360506
Conc: 454.81 ng/ml

Instrument :
ECD_P
ClientSampleId :
AR1660CCC500



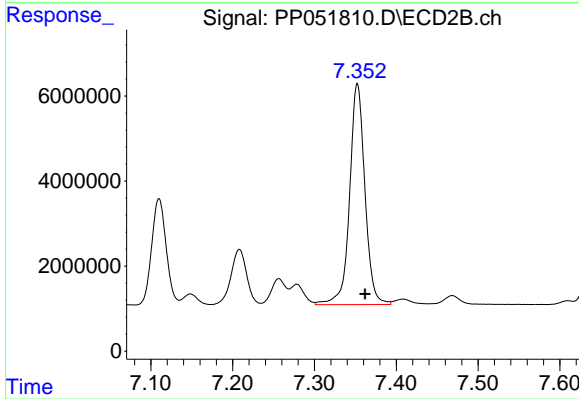
#34 AR-1260-4

R.T.: 7.110 min
Delta R.T.: -0.010 min
Response: 30700928
Conc: 457.91 ng/ml



#35 AR-1260-5

R.T.: 8.381 min
Delta R.T.: -0.006 min
Response: 67269554
Conc: 437.25 ng/ml



#35 AR-1260-5

R.T.: 7.352 min
Delta R.T.: -0.009 min
Response: 67613359
Conc: 457.64 ng/ml