

Data Path : Z:\pestpcbsrv\HPCHEM1\ECD_P\Data\PP100118\
 Data File : PP027588.D
 Signal(s) : Signal #1: ECD1A.CH Signal #2: ECD2B.CH
 Acq On : 01 Oct 2018 16:11
 Operator : EI\MA
 Sample : PB113178BS
 Misc :
 ALS Vial : 4 Sample Multiplier: 1

Instrument :
 ECD_P
 ClientSampleId :
 PB113178BS

Integration File signal 1: autoint1.e
 Integration File signal 2: autoint2.e
 Quant Time: Oct 02 03:54:44 2018
 Quant Method : Z:\pestpcbsrv\HPCHEM1\ECD_P\methods\PP092418.M
 Quant Title : 8080.M
 QLast Update : Tue Sep 25 01:51:01 2018
 Response via : Initial Calibration
 Integrator: ChemStation 6890 Scale Mode: Large solvent peaks clipped

Volume Inj. : 2 µl
 Signal #1 Phase : ZB-CLPesticides-1 Signal #2 Phase: ZB-CLPesticides-2
 Signal #1 Info : 30M x 0.32mm x0.5 Signal #2 Info : 30M x 0.32mm x 0.25µm

Compound	RT#1	RT#2	Resp#1	Resp#2	ng/ml	ng/ml

System Monitoring Compounds						
4) S 2,4-DCAA	12.047	12.160	134.0E6	224.2E6	528.338	517.969
Target Compounds						
1) T Dalapon	3.312	2.983	274.5E6	244.1E6	459.543	448.742
2) T 3,5-DICHL...	10.461	10.251	240.7E6	256.6E6	486.638	485.570
3) T 4-Nitroph...	11.623	11.304	187.0E6	87838540	426.401	436.802
5) T DICAMBA	12.368	12.469	758.4E6	807.7E6	490.033	488.389
6) T MCPP	12.709	12.660	20451498	40509024	48.611	48.064
7) T MCPA	12.953	13.048	31600414	66267157	47.157	49.360
8) T DICHLORPROP	13.565	13.584	201.9E6	201.4E6	557.358	485.386
9) T 2,4-D	13.915	14.071	180.8E6	248.5E6	467.064	473.587
10) T Pentachlo...	14.333	14.681	4089.4E6	3353.5E6	506.583	508.485
11) T 2,4,5-TP ...	15.196	15.253	1441.5E6	1249.1E6	493.824	494.754
12) T 2,4,5-T	15.585	15.893	1165.9E6	882.9E6	466.496	446.132
13) T 2,4-DB	16.349	16.498	81622209	103.5E6	430.659	425.447
14) T DINOSEB	17.836	16.886	878.9E6	730.6E6	456.560	459.567
15) T Picloram	17.598	18.266	1067.0E6	861.6E6	347.252	344.185
16) T DCPA	18.200	18.146	2125.9E6	1610.3E6	489.956	504.442

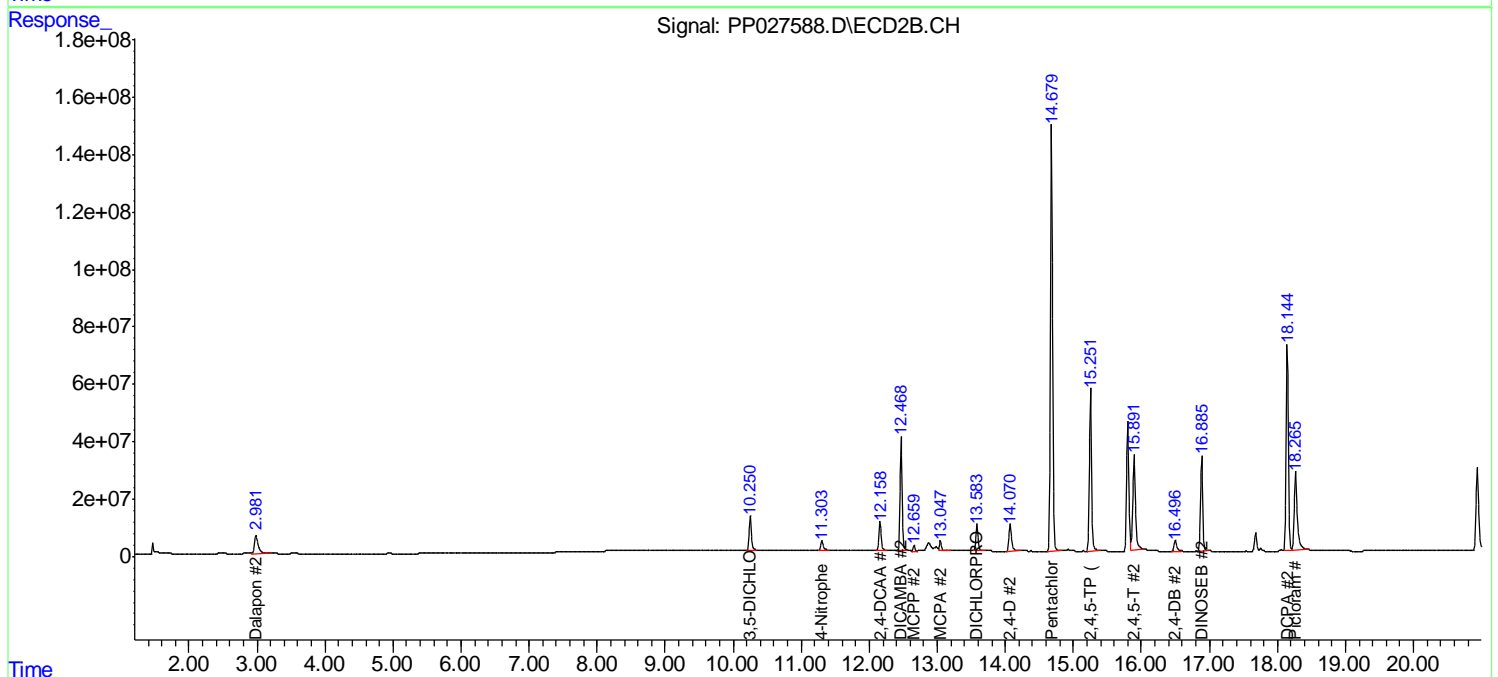
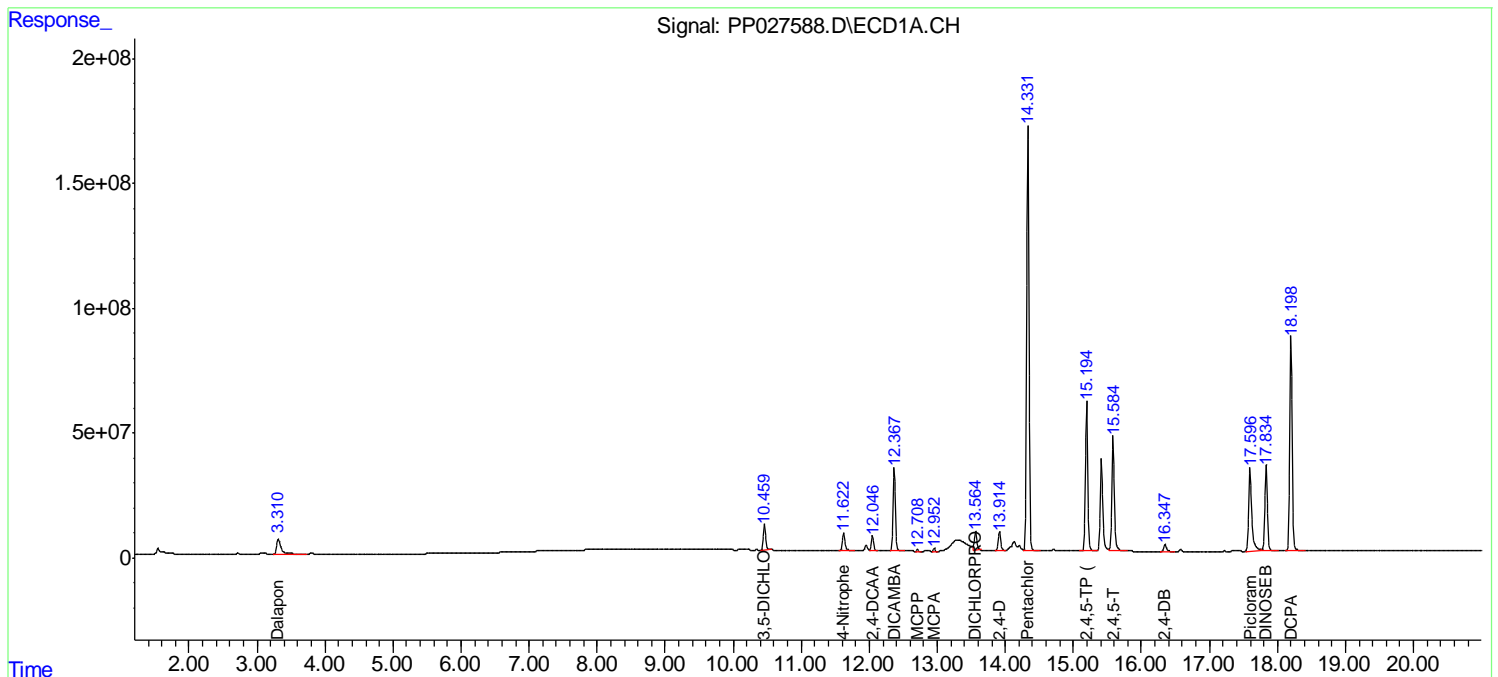
(f)=RT Delta > 1/2 Window (#)=Amounts differ by > 25% (m)=manual int.

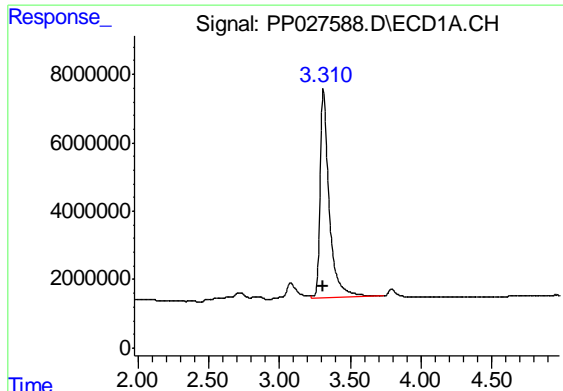
Data Path : Z:\pestpcbsrv\HPCHEM1\ECD_P\Data\PP100118\
 Data File : PP027588.D
 Signal(s) : Signal #1: ECD1A.CH Signal #2: ECD2B.CH
 Acq On : 01 Oct 2018 16:11
 Operator : EI\MA
 Sample : PB113178BS
 Misc :
 ALS Vial : 4 Sample Multiplier: 1

Instrument :
 ECD_P
 Client Sampled :
 PB113178BS

Integration File signal 1: autoint1.e
 Integration File signal 2: autoint2.e
 Quant Time: Oct 02 03:54:44 2018
 Quant Method : Z:\pestpcbsrv\HPCHEM1\ECD_P\methods\PP092418.M
 Quant Title : 8080.M
 QLast Update : Tue Sep 25 01:51:01 2018
 Response via : Initial Calibration
 Integrator: ChemStation 6890 Scale Mode: Large solvent peaks clipped

Volume Inj. : 2 µl
 Signal #1 Phase : ZB-CLPesticides-1 Signal #2 Phase: ZB-CLPesticides-2
 Signal #1 Info : 30M x 0.32mm x0.5 Signal #2 Info : 30M x 0.32mm x 0.25µm

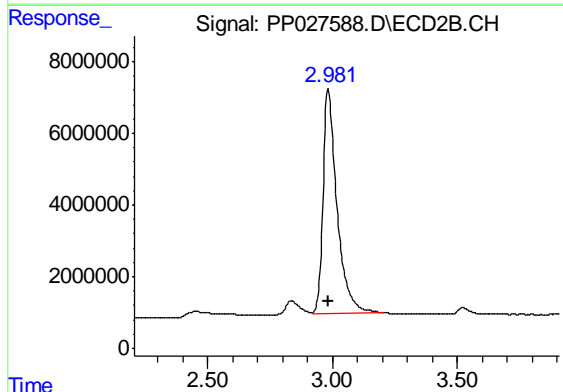




#1 Dalapon

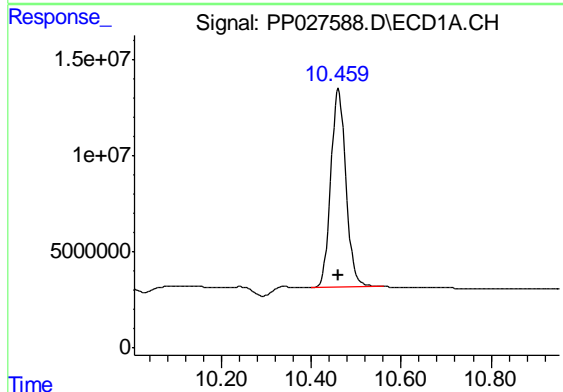
R.T.: 3.312 min
 Delta R.T.: 0.000 min
 Response: 274485458
 Conc: 459.54 ng/ml

Instrument :
 ECD_P
 ClientSampleId :
 PB113178BS



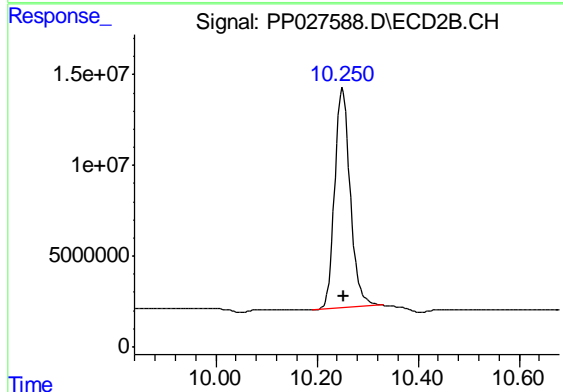
#1 Dalapon

R.T.: 2.983 min
 Delta R.T.: 0.000 min
 Response: 244068622
 Conc: 448.74 ng/ml



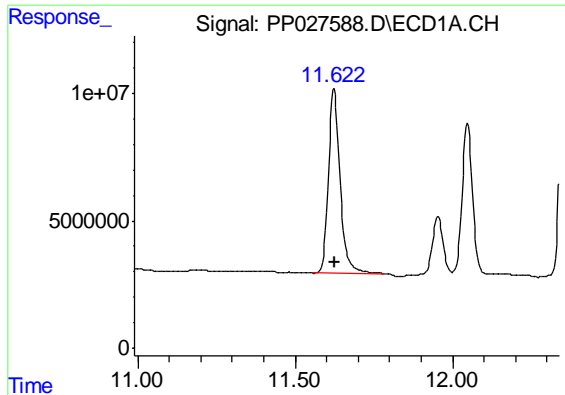
#2 3,5-DICHLOROBENZOIC ACID

R.T.: 10.461 min
 Delta R.T.: 0.000 min
 Response: 240671630
 Conc: 486.64 ng/ml



#2 3,5-DICHLOROBENZOIC ACID

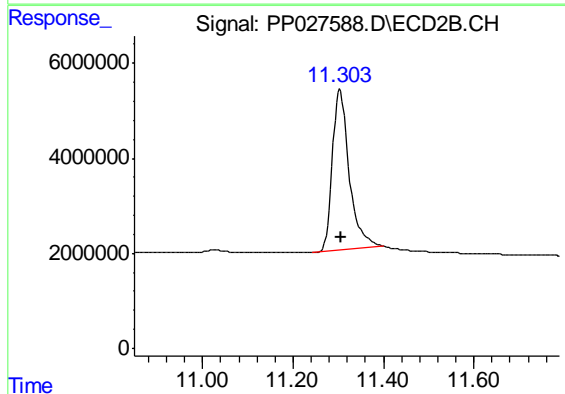
R.T.: 10.251 min
 Delta R.T.: 0.000 min
 Response: 256595254
 Conc: 485.57 ng/ml



#3 4-Nitrophenol

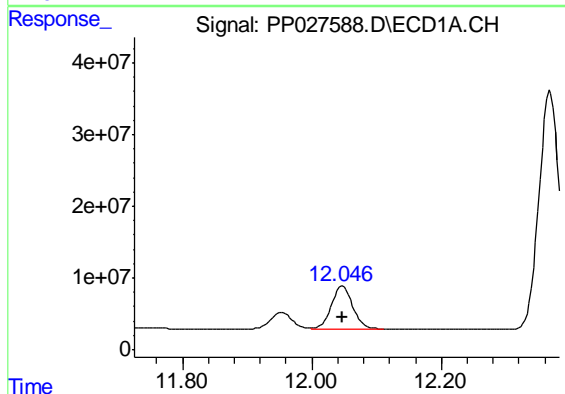
R.T.: 11.623 min
 Delta R.T.: 0.000 min
 Response: 186967091
 Conc: 426.40 ng/ml

Instrument :
 ECD_P
 ClientSampleId :
 PB113178BS



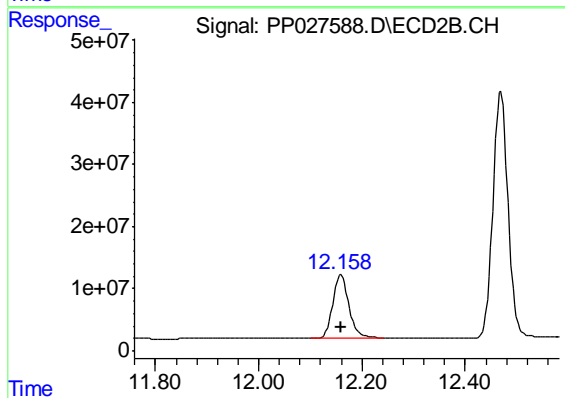
#3 4-Nitrophenol

R.T.: 11.304 min
 Delta R.T.: -0.002 min
 Response: 87838540
 Conc: 436.80 ng/ml



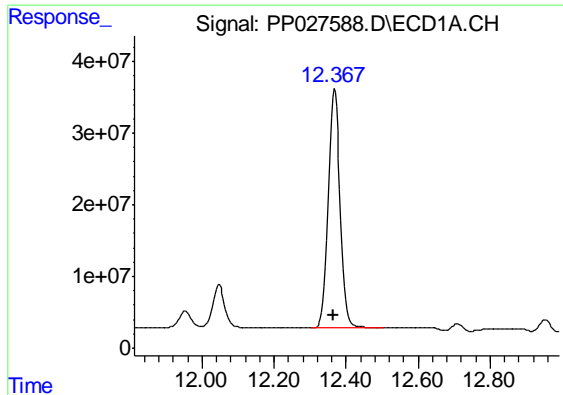
#4 2,4-DCAA

R.T.: 12.047 min
 Delta R.T.: 0.001 min
 Response: 133994115
 Conc: 528.34 ng/ml



#4 2,4-DCAA

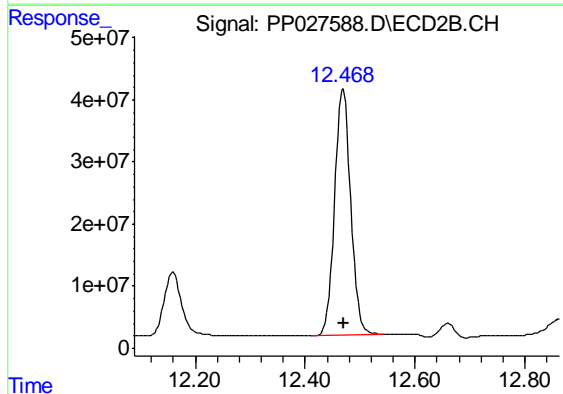
R.T.: 12.160 min
 Delta R.T.: 0.000 min
 Response: 224191175
 Conc: 517.97 ng/ml



#5 DICAMBA

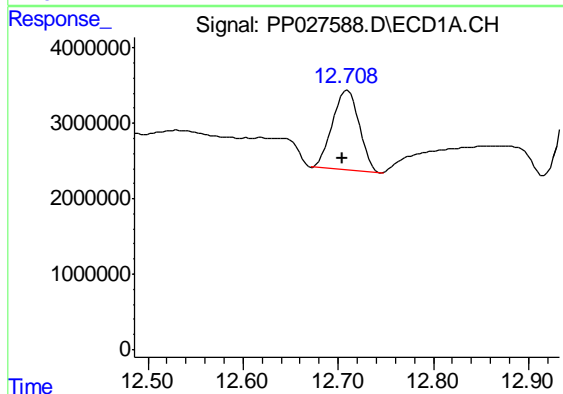
R.T.: 12.368 min
 Delta R.T.: 0.001 min
 Response: 758401547
 Conc: 490.03 ng/ml

Instrument :
 ECD_P
 ClientSampleId :
 PB113178BS



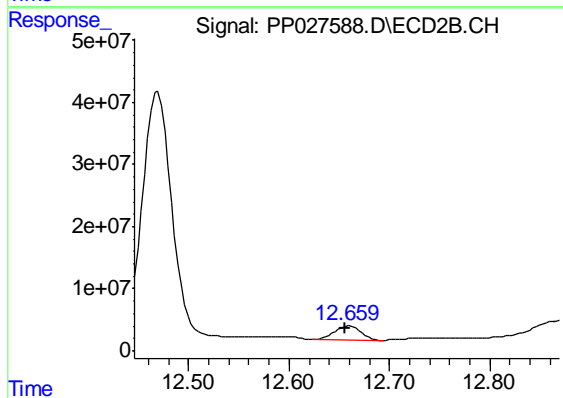
#5 DICAMBA

R.T.: 12.469 min
 Delta R.T.: 0.000 min
 Response: 807725554
 Conc: 488.39 ng/ml



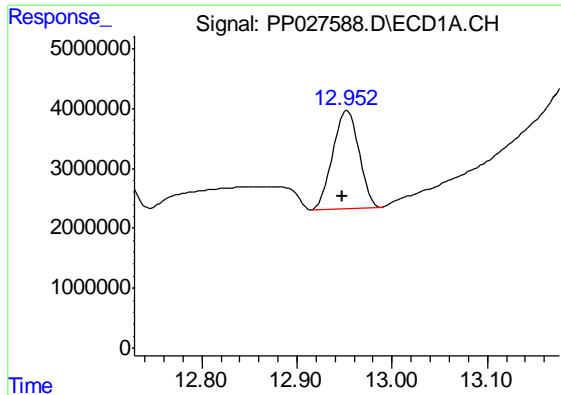
#6 MCPP

R.T.: 12.709 min
 Delta R.T.: 0.005 min
 Response: 20451498
 Conc: 48.61 ug/ml



#6 MCPP

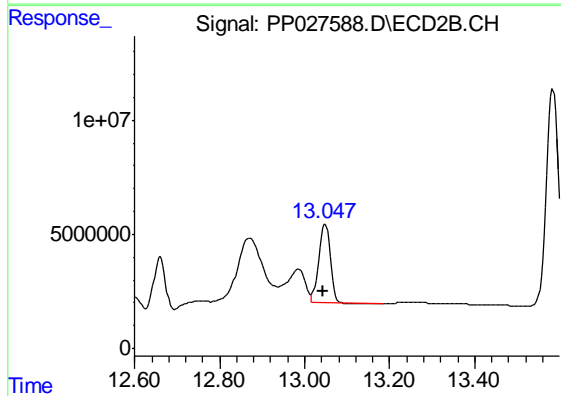
R.T.: 12.660 min
 Delta R.T.: 0.004 min
 Response: 40509024
 Conc: 48.06 ug/ml



#7 MCPA

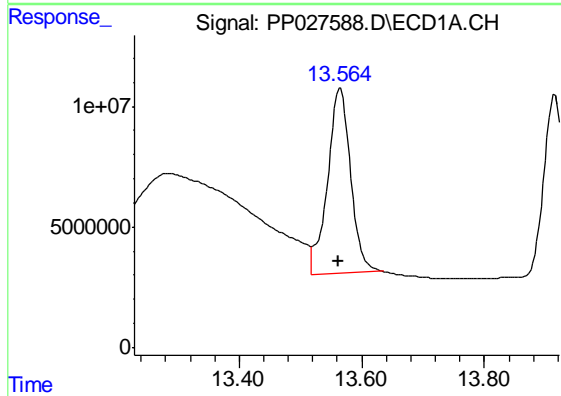
R.T.: 12.953 min
 Delta R.T.: 0.005 min
 Response: 31600414
 Conc: 47.16 ug/ml

Instrument :
 ECD_P
 ClientSampled :
 PB113178BS



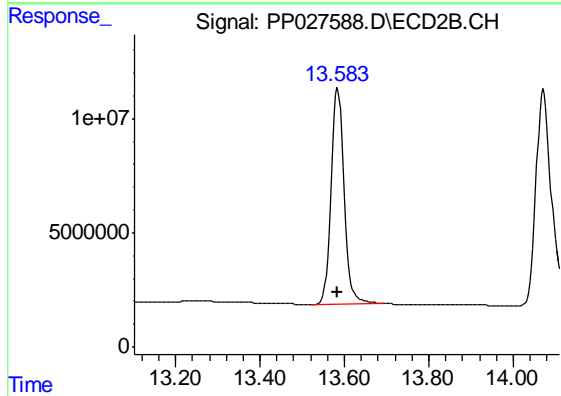
#7 MCPA

R.T.: 13.048 min
 Delta R.T.: 0.004 min
 Response: 66267157
 Conc: 49.36 ug/ml



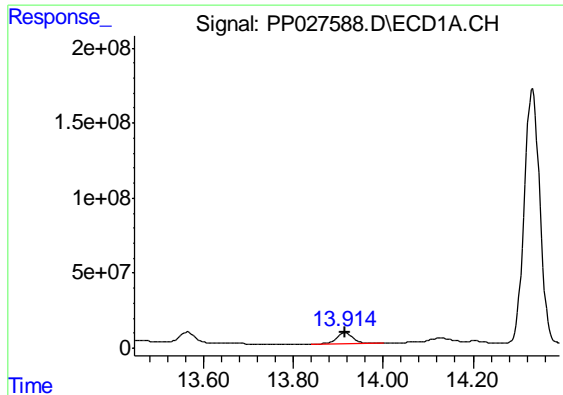
#8 DICHLORPROP

R.T.: 13.565 min
 Delta R.T.: 0.002 min
 Response: 201936798
 Conc: 557.36 ng/ml



#8 DICHLORPROP

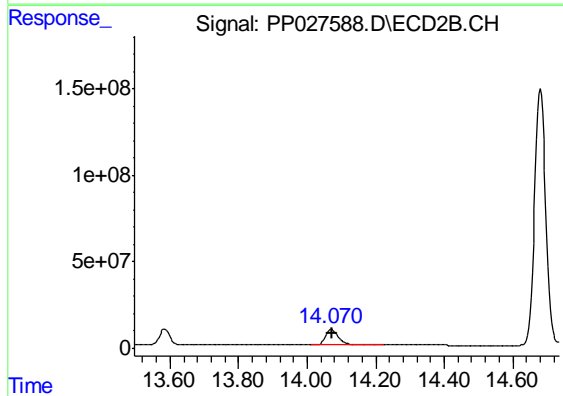
R.T.: 13.584 min
 Delta R.T.: 0.000 min
 Response: 201372185
 Conc: 485.39 ng/ml



#9 2,4-D

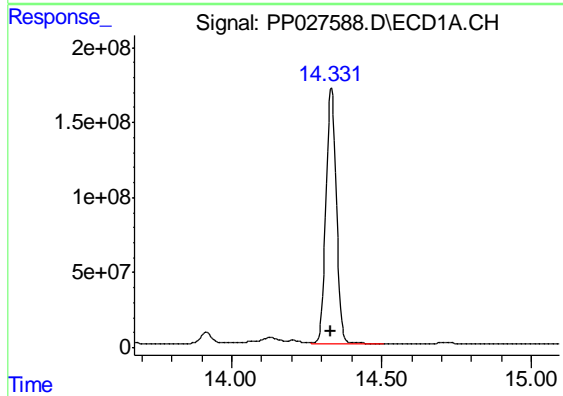
R.T.: 13.915 min
 Delta R.T.: 0.000 min
 Response: 180755783
 Conc: 467.06 ng/ml

Instrument :
 ECD_P
 ClientSampleId :
 PB113178BS



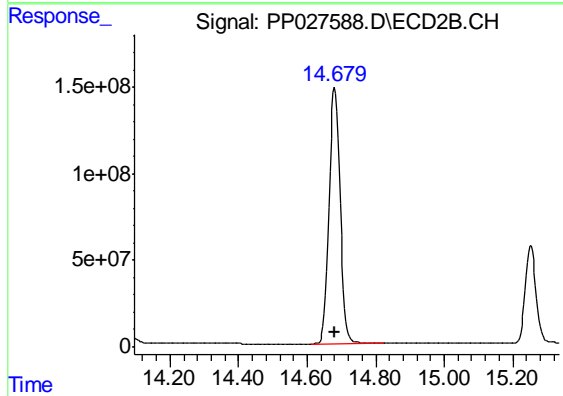
#9 2,4-D

R.T.: 14.071 min
 Delta R.T.: -0.002 min
 Response: 248495368
 Conc: 473.59 ng/ml



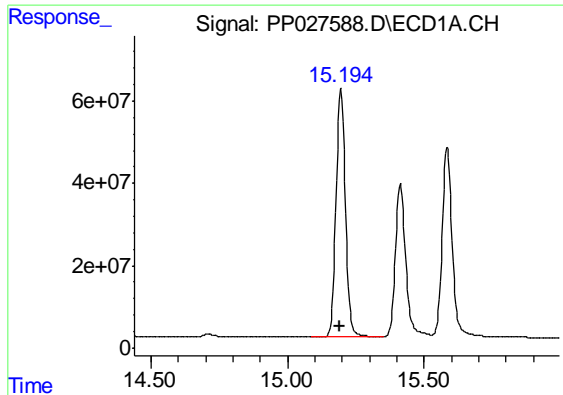
#10 Pentachlorophenol

R.T.: 14.333 min
 Delta R.T.: 0.002 min
 Response: 4089426860
 Conc: 506.58 ng/ml



#10 Pentachlorophenol

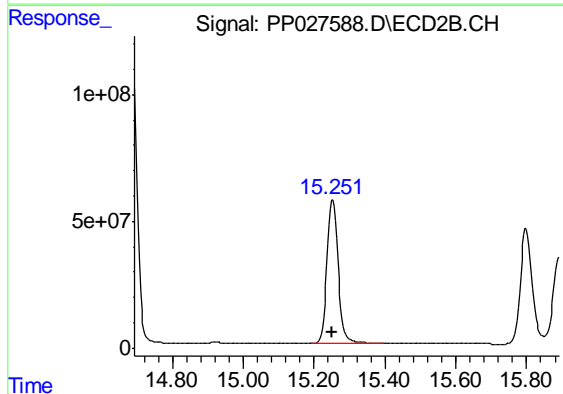
R.T.: 14.681 min
 Delta R.T.: 0.000 min
 Response: 3353509253
 Conc: 508.48 ng/ml



#11 2,4,5-TP (SILVEX)

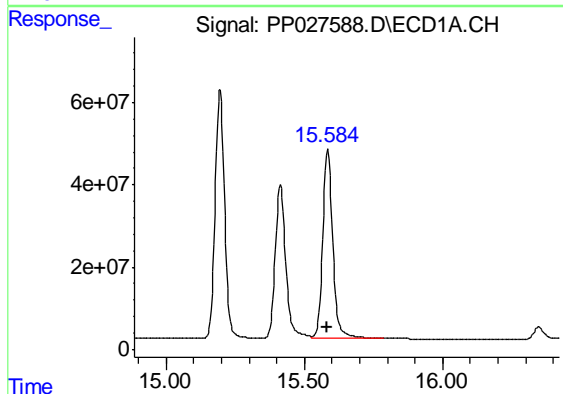
R.T.: 15.196 min
 Delta R.T.: 0.003 min
 Response: 1441513977
 Conc: 493.82 ng/ml

Instrument :
 ECD_P
 ClientSampleId :
 PB113178BS



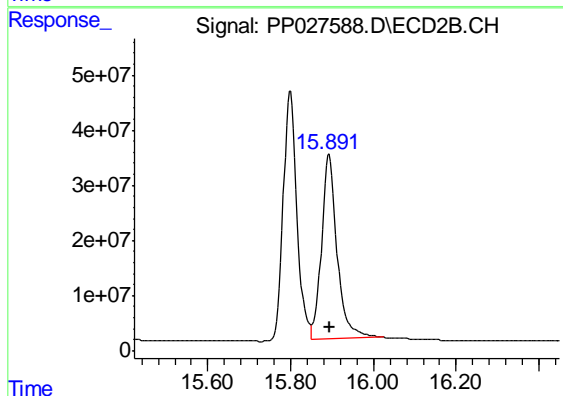
#11 2,4,5-TP (SILVEX)

R.T.: 15.253 min
 Delta R.T.: 0.002 min
 Response: 1249137126
 Conc: 494.75 ng/ml



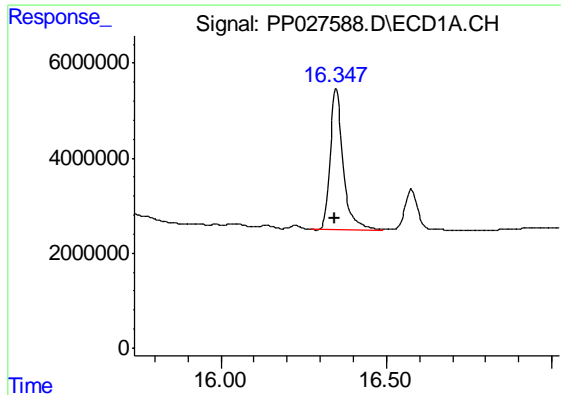
#12 2,4,5-T

R.T.: 15.585 min
 Delta R.T.: 0.000 min
 Response: 1165896845
 Conc: 466.50 ng/ml



#12 2,4,5-T

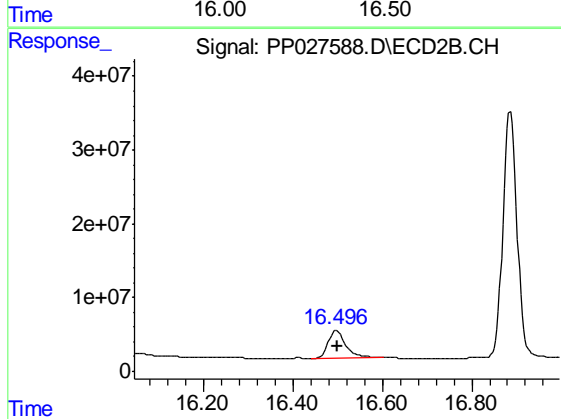
R.T.: 15.893 min
 Delta R.T.: 0.000 min
 Response: 882863767
 Conc: 446.13 ng/ml



#13 2,4-DB

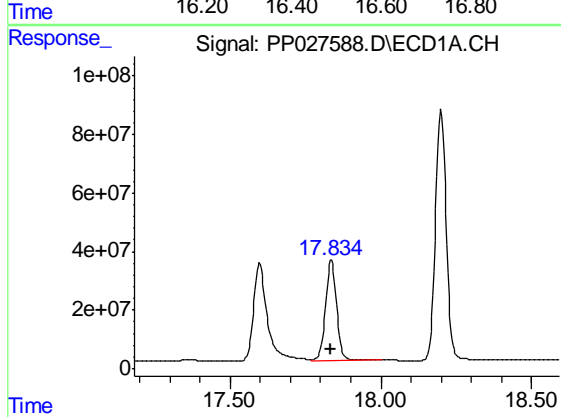
R.T.: 16.349 min
 Delta R.T.: 0.003 min
 Response: 81622209
 Conc: 430.66 ng/ml

Instrument :
 ECD_P
 ClientSampleId :
 PB113178BS



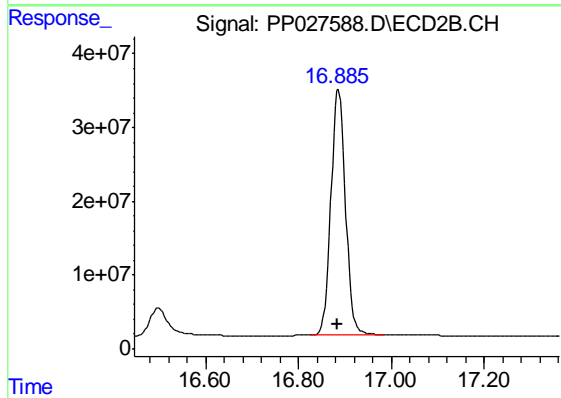
#13 2,4-DB

R.T.: 16.498 min
 Delta R.T.: 0.000 min
 Response: 103476728
 Conc: 425.45 ng/ml



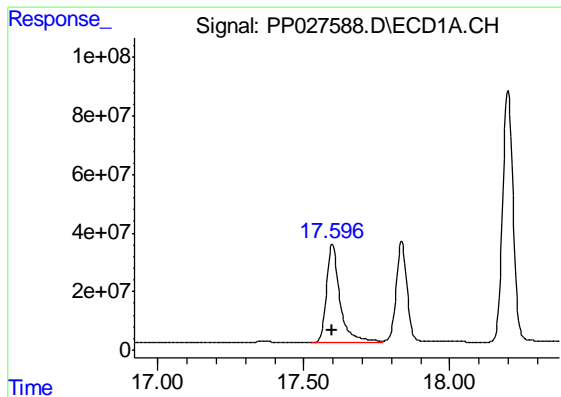
#14 DINOSEB

R.T.: 17.836 min
 Delta R.T.: 0.002 min
 Response: 878907079
 Conc: 456.56 ng/ml



#14 DINOSEB

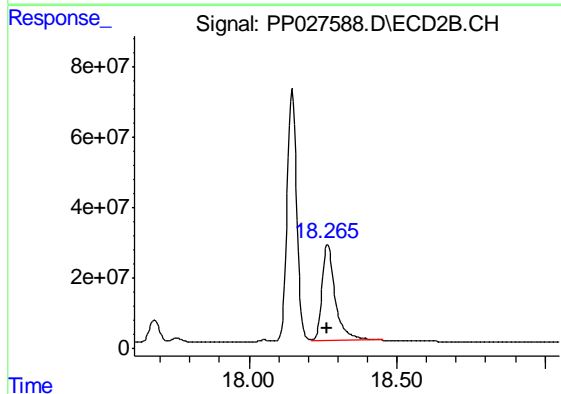
R.T.: 16.886 min
 Delta R.T.: 0.001 min
 Response: 730552511
 Conc: 459.57 ng/ml



#15 Picloram

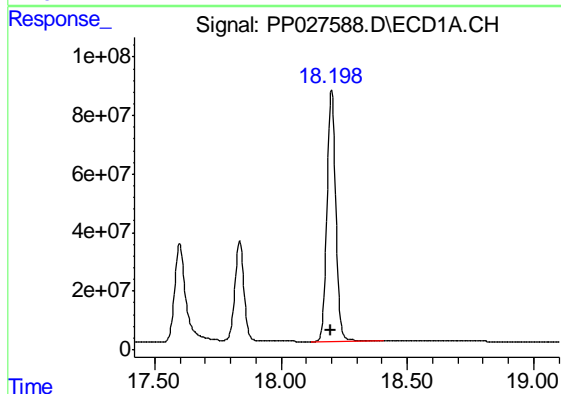
R.T.: 17.598 min
 Delta R.T.: 0.001 min
 Response: 1067043453
 Conc: 347.25 ng/ml

Instrument :
 ECD_P
 ClientSampleId :
 PB113178BS



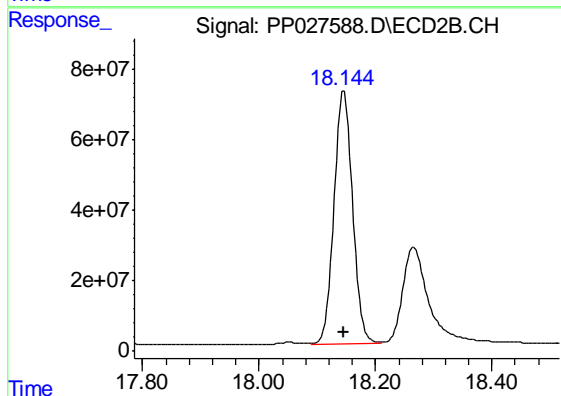
#15 Picloram

R.T.: 18.266 min
 Delta R.T.: 0.000 min
 Response: 861628535
 Conc: 344.19 ng/ml



#16 DCPA

R.T.: 18.200 min
 Delta R.T.: 0.003 min
 Response: 2125865587
 Conc: 489.96 ng/ml



#16 DCPA

R.T.: 18.146 min
 Delta R.T.: 0.000 min
 Response: 1610272824
 Conc: 504.44 ng/ml