

Data Path : Z:\pestpcbsrv\HPCHEM1\ECD_P\Data\PP100223\
 Data File : PP060508.D
 Signal(s) : Signal #1: ECD1A.ch Signal #2: ECD2B.ch
 Acq On : 02 Oct 2023 19:03
 Operator : YP\AJ
 Sample : AR1242CCC500
 Misc :
 ALS Vial : 4 Sample Multiplier: 1

Instrument :
 ECD_P
 ClientSampleId :

Integration File signal 1: autoint1.e
 Integration File signal 2: autoint2.e
 Quant Time: Oct 03 00:21:58 2023
 Quant Method : Z:\pestpcbsrv\HPCHEM1\ECD_P\methods\PP092623.M
 Quant Title : GC EXTRACTABLES
 QLast Update : Wed Sep 27 11:30:16 2023
 Response via : Initial Calibration
 Integrator: ChemStation

Volume Inj. : 2 µl
 Signal #1 Phase : ZB-MR1 Signal #2 Phase: ZB-MR2
 Signal #1 Info : 30Mx0.32mmx 0.50µ Signal #2 Info : 30M x 0.32mm x 0.25µm

Compound	RT#1	RT#2	Resp#1	Resp#2	ng/ml	ng/ml

System Monitoring Compounds						
1) SA Tetrachlo...	4.532	3.684	111.4E6	73863400	49.761	49.623
2) SA Decachlor...	10.458	8.746	85371772	75927035	48.355	46.547
Target Compounds						
3) L1 AR-1016-1	5.717	4.783	30280347	23981504	411.391	412.694
4) L1 AR-1016-2	5.742	4.802	50618424	32783338	483.309	407.219
5) L1 AR-1016-3	5.806	4.979	27557795	18553266	421.654	415.131
6) L1 AR-1016-4	5.905	5.021	23043653	14282789	423.757	396.924
7) L1 AR-1016-5	6.204	5.237	23738256	19815455	426.773	407.810
8) L2 AR-1221-1	4.740	3.900	4258971	3091555	147.436	147.991
9) L2 AR-1221-2	4.832	3.988	6121543	3897879	286.522	261.411
10) L2 AR-1221-3	4.909	4.065	19227921	13380930	316.618	304.612
11) L3 AR-1232-1	4.909f	4.065	19227921	13380930	381.976	367.714
12) L3 AR-1232-2	5.448f	4.802	25410524	32783338	927.974	898.953
13) L3 AR-1232-3	5.742f	4.979	50618424	18553266	1090.510	926.956
14) L3 AR-1232-4	5.905f	5.064	23043653	18424581	937.511	987.160
15) L3 AR-1232-5	5.997f	5.237	20525781	19815455	990.547	952.695
16) L4 AR-1242-1	5.717	4.783	30280347	23981504	473.818	473.689
17) L4 AR-1242-2	5.742	4.802	50618424	32783338	559.033	472.080
18) L4 AR-1242-3	5.806	4.979	27557795	18553266	489.476	481.769
19) L4 AR-1242-4	5.905	5.064	23043653	18424581	493.377	467.832
20) L4 AR-1242-5	6.651	5.591	24108475	22637011	479.332	462.762
21) L5 AR-1248-1	5.717	4.783	30280347	23981504	650.848	657.142
22) L5 AR-1248-2	5.997	5.021	20525781	14282789	296.037	273.240
23) L5 AR-1248-3	6.204	5.064	23738256	18424581	312.553	331.829
24) L5 AR-1248-4	6.612	5.237	22983096	19815455	277.890	301.023
25) L5 AR-1248-5	6.651	5.633	24108475	19034669	299.547	295.927
26) L6 AR-1254-1	6.585	5.591	17838956	22637011	209.033	228.844
27) L6 AR-1254-2	6.810	5.739	20803771	5766268	163.005	67.094 #
28) L6 AR-1254-3	7.177	6.147	9168861	7874952	68.982	54.944
29) L6 AR-1254-4	7.465	6.376	6840113	5901232	69.556	67.703
30) L6 AR-1254-5	7.888	6.797	2541675	2273351	23.459	17.940
31) L7 AR-1260-1	7.344	6.292	1509631	2825407	14.401	28.148 #
32) L7 AR-1260-2	7.602	6.465	2697611	1264895	22.312	10.602 #
33) L7 AR-1260-3	7.958	6.618	1077383	1400545	11.623	12.232
34) L7 AR-1260-4	8.184	7.096	2200026	202237	20.745	2.125 #
35) L7 AR-1260-5	8.529	7.338	146616	461502	0.758	2.130 #
36) L8 AR-1262-1	7.958	6.910f	1077383	216980	8.637	4.052 #
37) L8 AR-1262-2	8.529	7.096	146616	202237	0.700	1.715 #
38) L8 AR-1262-3	0.000	7.628	0	406910	N.D.	4.413 #
39) L8 AR-1262-4	0.000	7.686	0	333670	N.D.	1.981 #
40) L8 AR-1262-5	0.000	8.182	0	10307	N.D.	0.133 #
41) L9 AR-1268-1	0.000	7.628	0	406910	N.D.	1.497 #

Data Path : Z:\pestpcbsrv\HPCHEM1\ECD_P\Data\PP100223\
 Data File : PP060508.D
 Signal(s) : Signal #1: ECD1A.ch Signal #2: ECD2B.ch
 Acq On : 02 Oct 2023 19:03
 Operator : YP\AJ
 Sample : AR1242CCC500
 Misc :
 ALS Vial : 4 Sample Multiplier: 1

Instrument :
 ECD_P
 ClientSampleId :

Integration File signal 1: autoint1.e
 Integration File signal 2: autoint2.e
 Quant Time: Oct 03 00:21:58 2023
 Quant Method : Z:\pestpcbsrv\HPCHEM1\ECD_P\methods\PP092623.M
 Quant Title : GC EXTRACTABLES
 QLast Update : Wed Sep 27 11:30:16 2023
 Response via : Initial Calibration
 Integrator: ChemStation

Volume Inj. : 2 µl
 Signal #1 Phase : ZB-MR1 Signal #2 Phase: ZB-MR2
 Signal #1 Info : 30Mx0.32mmx 0.50µ Signal #2 Info : 30M x 0.32mm x 0.25µm

	Compound	RT#1	RT#2	Resp#1	Resp#2	ng/ml	ng/ml
42)	L9 AR-1268-2	0.000	7.686	0	333670	N.D.	1.368 #
43)	L9 AR-1268-3	0.000	7.900	0	406467	N.D.	1.900 #
44)	L9 AR-1268-4	0.000	8.182	0	10307	N.D.	0.117 #
45)	L9 AR-1268-5	10.094	8.484	481940	979459	0.761	1.567 #

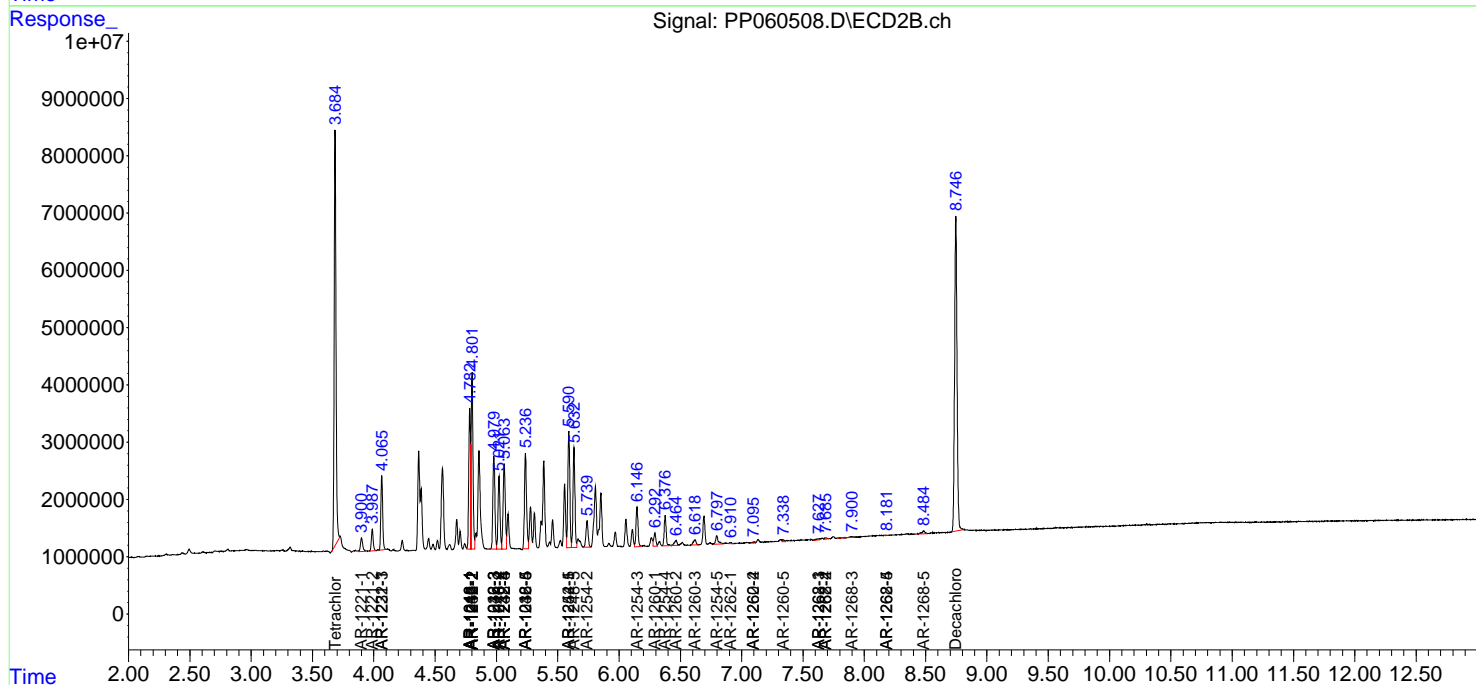
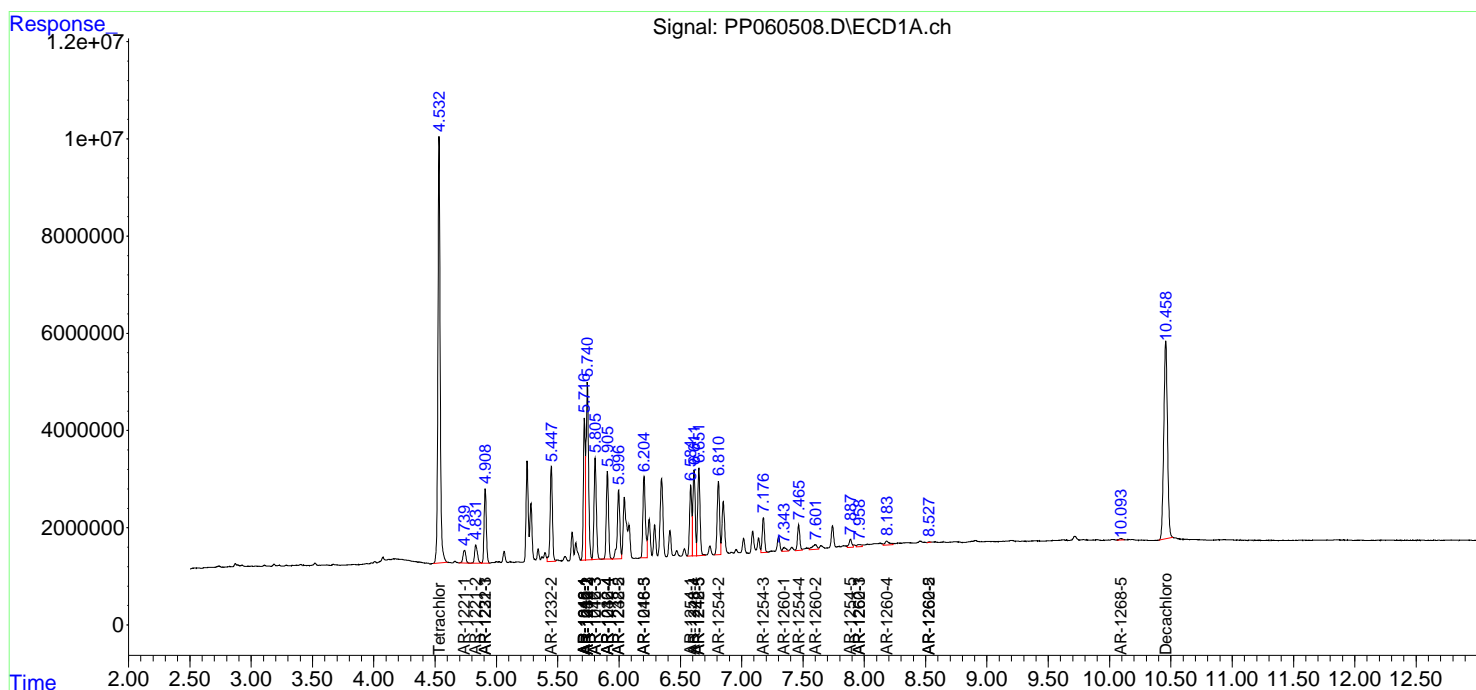
(f)=RT Delta > 1/2 Window (#)=Amounts differ by > 25% (m)=manual int.

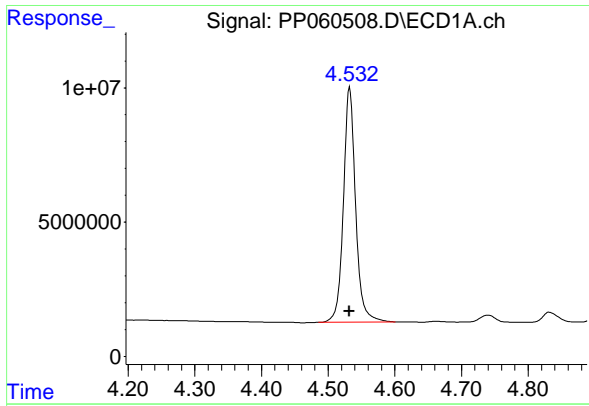
Data Path : Z:\pestpcbsrv\HPCHEM1\ECD_P\Data\PP100223\
 Data File : PP060508.D
 Signal(s) : Signal #1: ECD1A.ch Signal #2: ECD2B.ch
 Acq On : 02 Oct 2023 19:03
 Operator : YP\AJ
 Sample : AR1242CCC500
 Misc :
 ALS Vial : 4 Sample Multiplier: 1

Instrument :
 ECD_P
 ClientSampleId :

Integration File signal 1: autoint1.e
 Integration File signal 2: autoint2.e
 Quant Time: Oct 03 00:21:58 2023
 Quant Method : Z:\pestpcbsrv\HPCHEM1\ECD_P\methods\PP092623.M
 Quant Title : GC EXTRACTABLES
 QLast Update : Wed Sep 27 11:30:16 2023
 Response via : Initial Calibration
 Integrator: ChemStation

Volume Inj. : 2 µl
 Signal #1 Phase : ZB-MR1 Signal #2 Phase: ZB-MR2
 Signal #1 Info : 30Mx0.32mmx 0.50µm Signal #2 Info : 30M x 0.32mm x 0.25µm

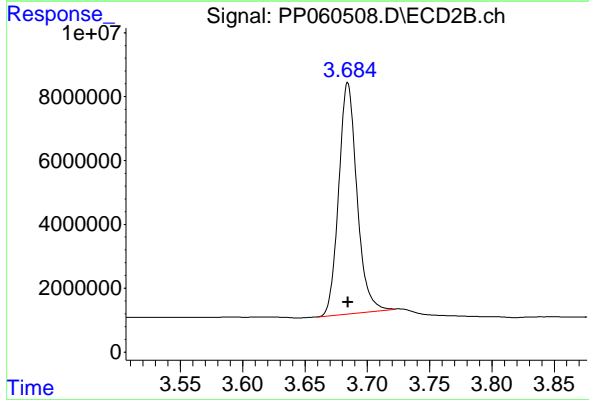




#1 Tetrachloro-m-xylene

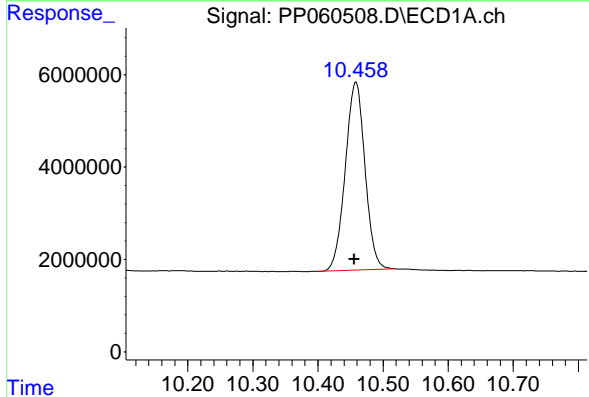
R.T.: 4.532 min
 Delta R.T.: 0.000 min
 Response: 111438857
 Conc: 49.76 ng/ml

Instrument :
 ECD_P
 ClientSampleId :



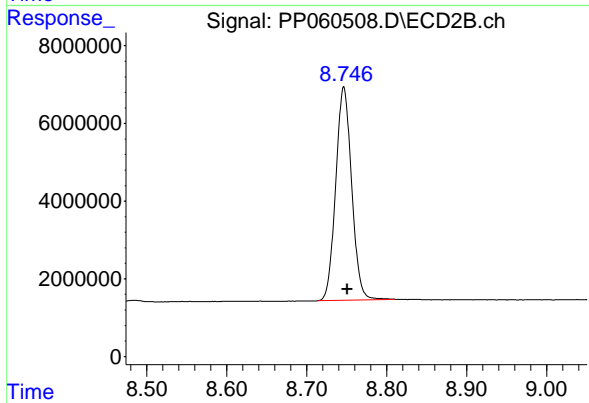
#1 Tetrachloro-m-xylene

R.T.: 3.684 min
 Delta R.T.: 0.000 min
 Response: 73863400
 Conc: 49.62 ng/ml



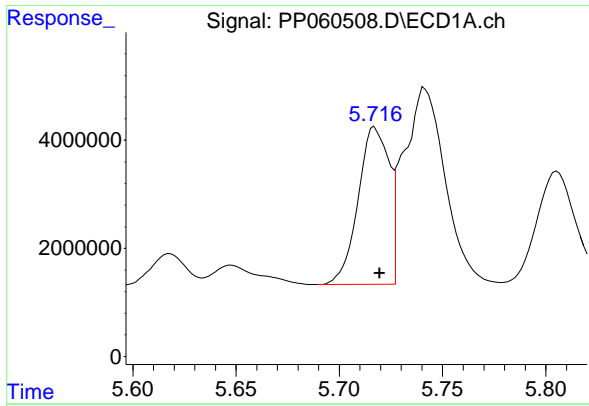
#2 Decachlorobiphenyl

R.T.: 10.458 min
 Delta R.T.: 0.003 min
 Response: 85371772
 Conc: 48.35 ng/ml



#2 Decachlorobiphenyl

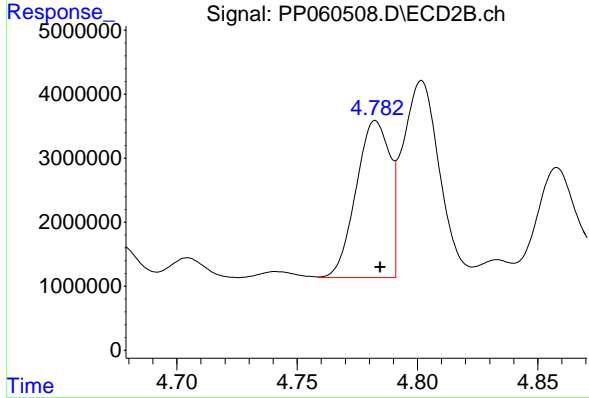
R.T.: 8.746 min
 Delta R.T.: -0.004 min
 Response: 75927035
 Conc: 46.55 ng/ml



#3 AR-1016-1

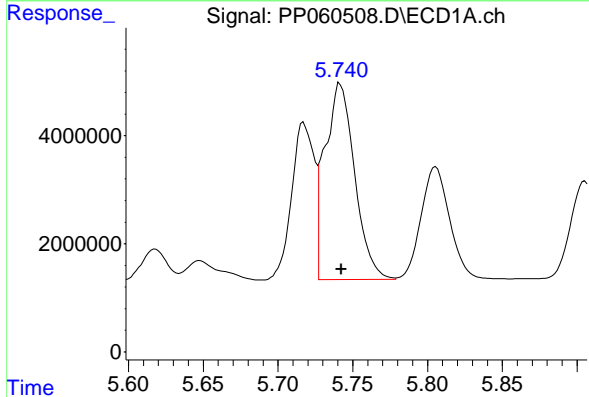
R.T.: 5.717 min
 Delta R.T.: -0.002 min
 Response: 30280347
 Conc: 411.39 ng/ml

Instrument :
 ECD_P
 ClientSampleId :



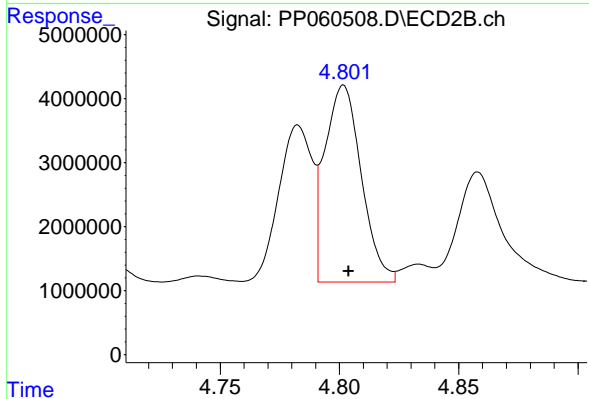
#3 AR-1016-1

R.T.: 4.783 min
 Delta R.T.: -0.002 min
 Response: 23981504
 Conc: 412.69 ng/ml



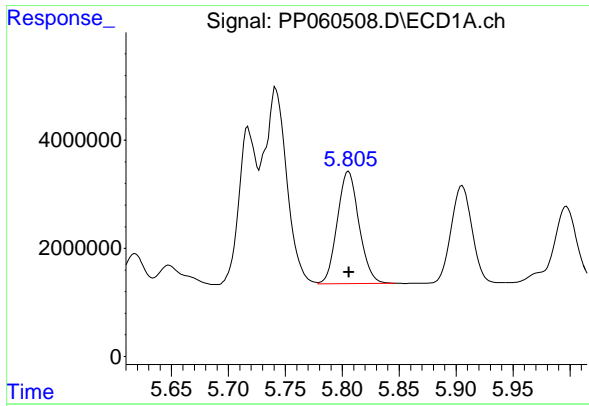
#4 AR-1016-2

R.T.: 5.742 min
 Delta R.T.: 0.000 min
 Response: 50618424
 Conc: 483.31 ng/ml



#4 AR-1016-2

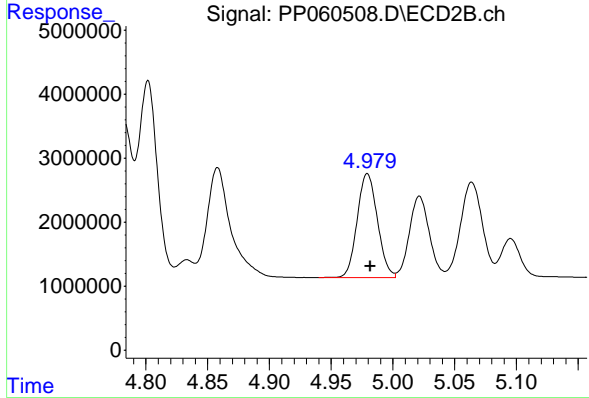
R.T.: 4.802 min
 Delta R.T.: -0.002 min
 Response: 32783338
 Conc: 407.22 ng/ml



#5 AR-1016-3

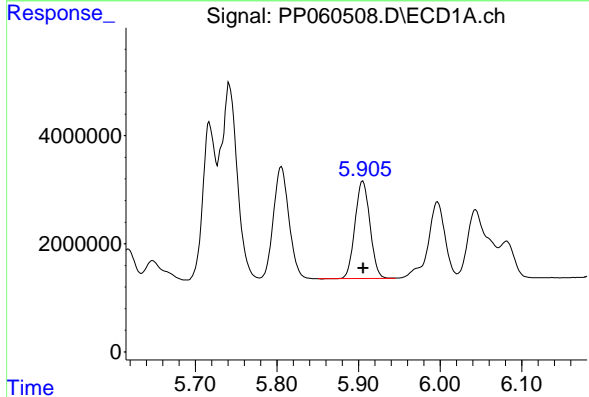
R.T.: 5.806 min
 Delta R.T.: 0.000 min
 Response: 27557795
 Conc: 421.65 ng/ml

Instrument :
 ECD_P
 ClientSampleId :



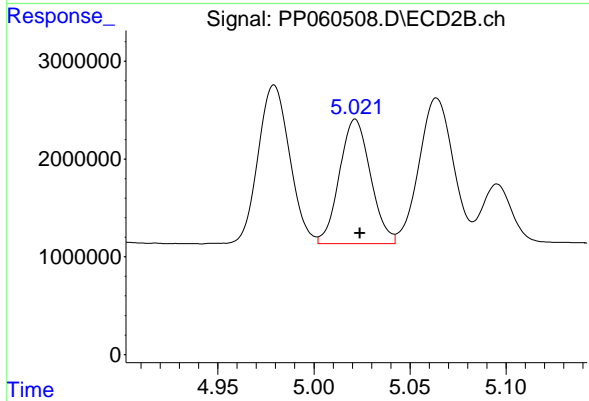
#5 AR-1016-3

R.T.: 4.979 min
 Delta R.T.: -0.002 min
 Response: 18553266
 Conc: 415.13 ng/ml



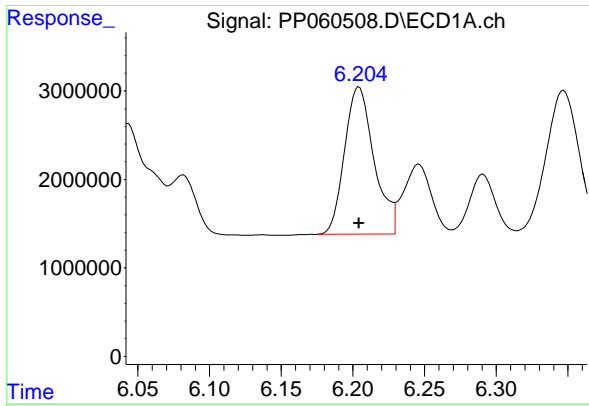
#6 AR-1016-4

R.T.: 5.905 min
 Delta R.T.: 0.000 min
 Response: 23043653
 Conc: 423.76 ng/ml



#6 AR-1016-4

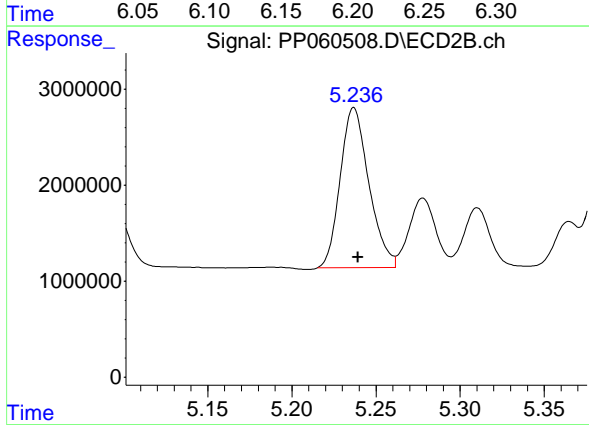
R.T.: 5.021 min
 Delta R.T.: -0.003 min
 Response: 14282789
 Conc: 396.92 ng/ml



#7 AR-1016-5

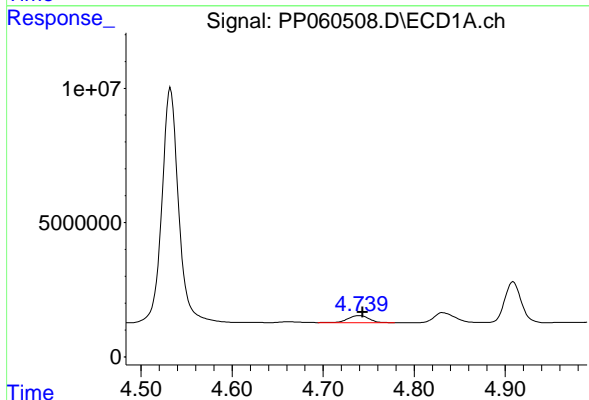
R.T.: 6.204 min
 Delta R.T.: 0.000 min
 Response: 23738256
 Conc: 426.77 ng/ml

Instrument :
 ECD_P
 ClientSampleId :



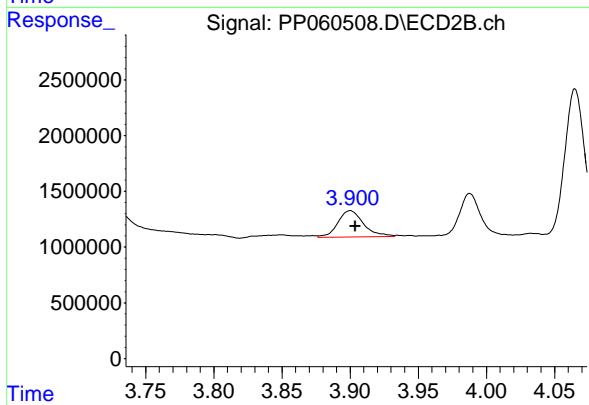
#7 AR-1016-5

R.T.: 5.237 min
 Delta R.T.: -0.002 min
 Response: 19815455
 Conc: 407.81 ng/ml



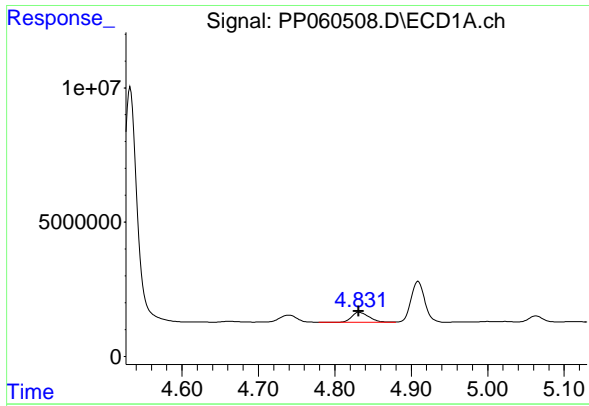
#8 AR-1221-1

R.T.: 4.740 min
 Delta R.T.: -0.004 min
 Response: 4258971
 Conc: 147.44 ng/ml



#8 AR-1221-1

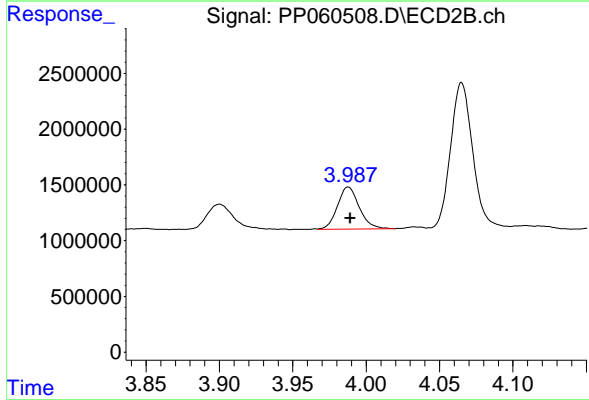
R.T.: 3.900 min
 Delta R.T.: -0.004 min
 Response: 3091555
 Conc: 147.99 ng/ml



#9 AR-1221-2

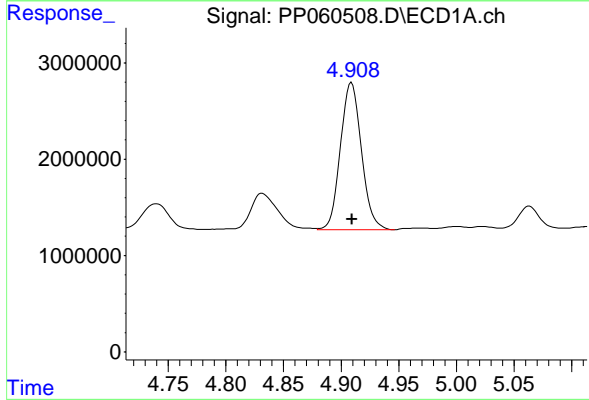
R.T.: 4.832 min
 Delta R.T.: 0.000 min
 Response: 6121543
 Conc: 286.52 ng/ml

Instrument :
 ECD_P
 ClientSampleId :



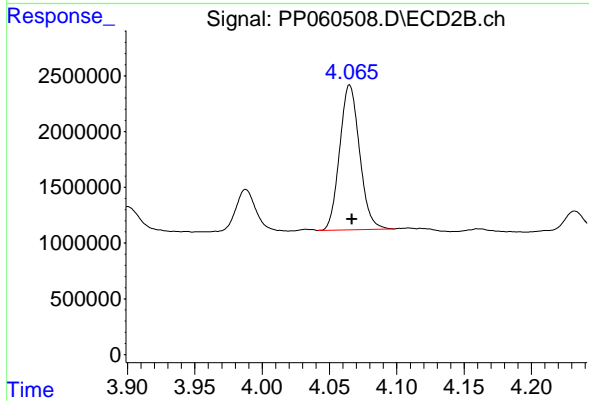
#9 AR-1221-2

R.T.: 3.988 min
 Delta R.T.: -0.001 min
 Response: 3897879
 Conc: 261.41 ng/ml



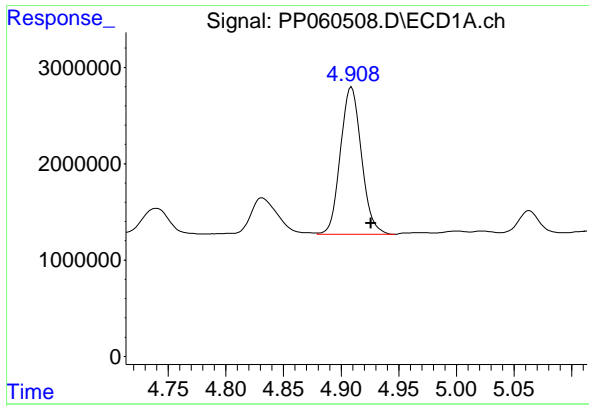
#10 AR-1221-3

R.T.: 4.909 min
 Delta R.T.: 0.000 min
 Response: 19227921
 Conc: 316.62 ng/ml



#10 AR-1221-3

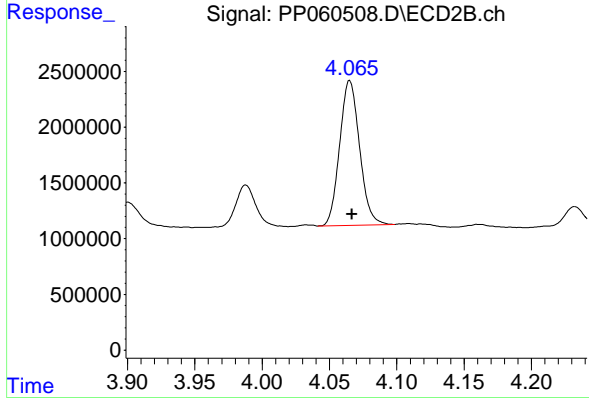
R.T.: 4.065 min
 Delta R.T.: -0.002 min
 Response: 13380930
 Conc: 304.61 ng/ml



#11 AR-1232-1

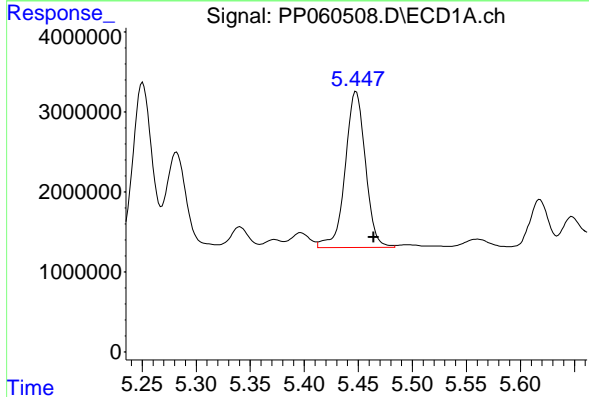
R.T.: 4.909 min
 Delta R.T.: -0.017 min
 Response: 19227921
 Conc: 381.98 ng/ml

Instrument :
 ECD_P
 ClientSampleId :



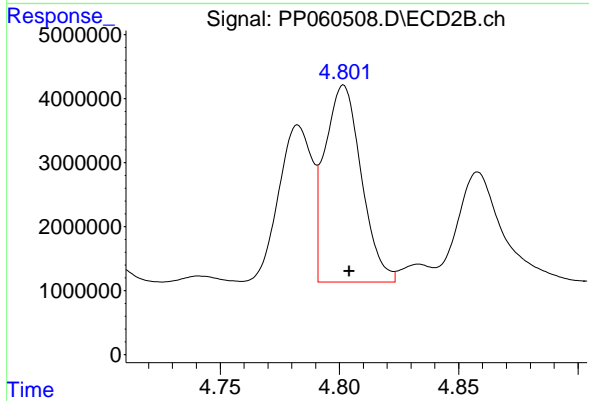
#11 AR-1232-1

R.T.: 4.065 min
 Delta R.T.: -0.002 min
 Response: 13380930
 Conc: 367.71 ng/ml



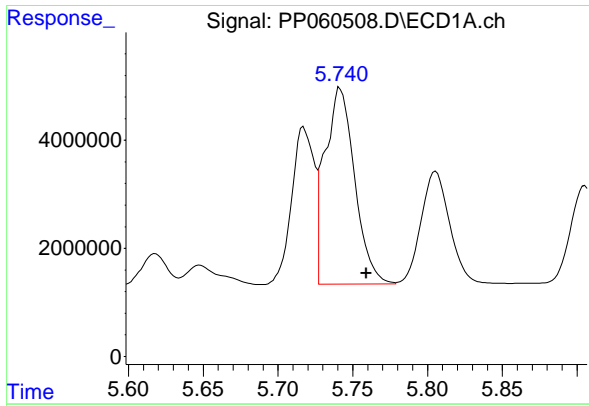
#12 AR-1232-2

R.T.: 5.448 min
 Delta R.T.: -0.016 min
 Response: 25410524
 Conc: 927.97 ng/ml



#12 AR-1232-2

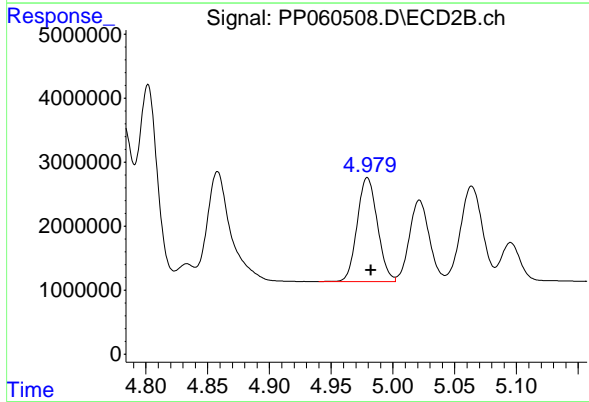
R.T.: 4.802 min
 Delta R.T.: -0.002 min
 Response: 32783338
 Conc: 898.95 ng/ml



#13 AR-1232-3

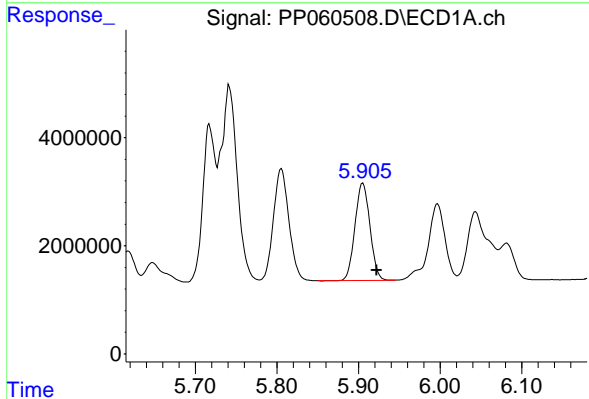
R.T.: 5.742 min
 Delta R.T.: -0.018 min
 Response: 50618424
 Conc: 1090.51 ng/ml

Instrument :
 ECD_P
 ClientSampleId :



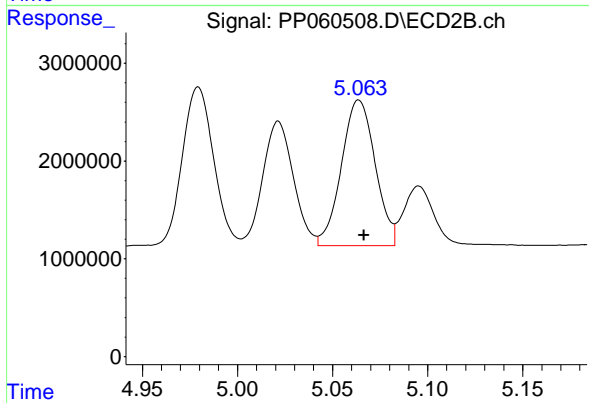
#13 AR-1232-3

R.T.: 4.979 min
 Delta R.T.: -0.003 min
 Response: 18553266
 Conc: 926.96 ng/ml



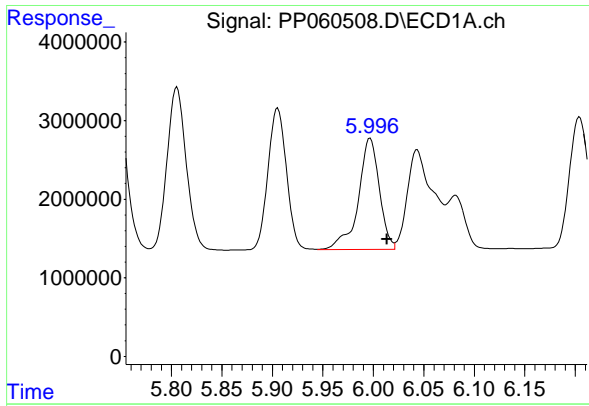
#14 AR-1232-4

R.T.: 5.905 min
 Delta R.T.: -0.017 min
 Response: 23043653
 Conc: 937.51 ng/ml



#14 AR-1232-4

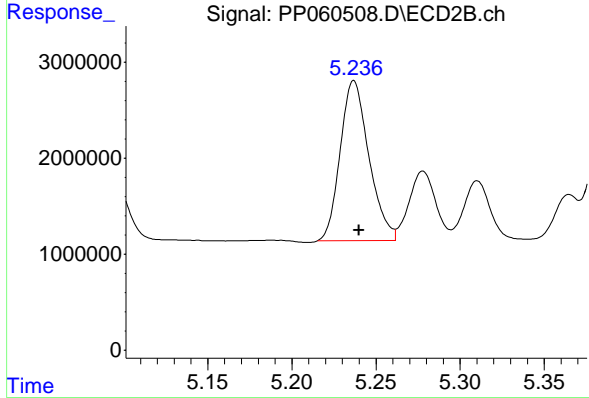
R.T.: 5.064 min
 Delta R.T.: -0.003 min
 Response: 18424581
 Conc: 987.16 ng/ml



#15 AR-1232-5

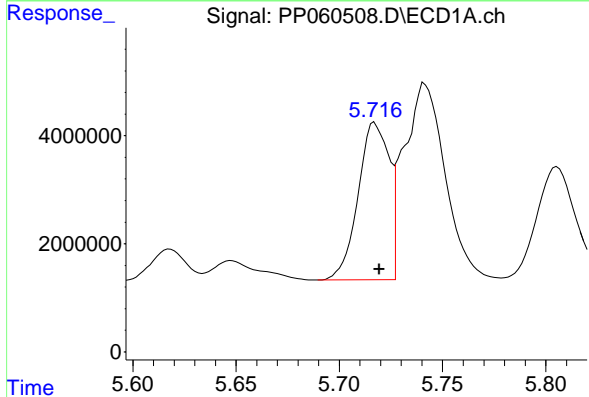
R.T.: 5.997 min
 Delta R.T.: -0.017 min
 Response: 20525781
 Conc: 990.55 ng/ml

Instrument :
 ECD_P
 ClientSampleId :



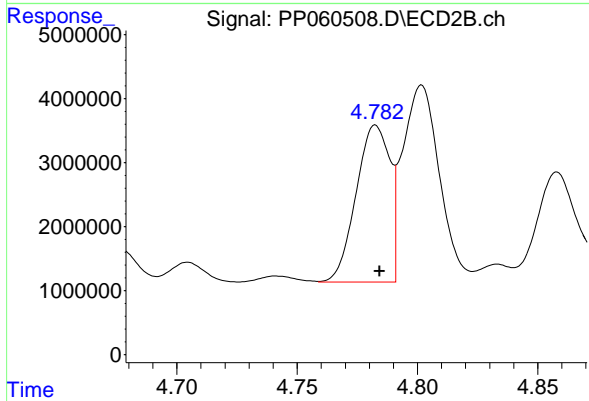
#15 AR-1232-5

R.T.: 5.237 min
 Delta R.T.: -0.003 min
 Response: 19815455
 Conc: 952.70 ng/ml



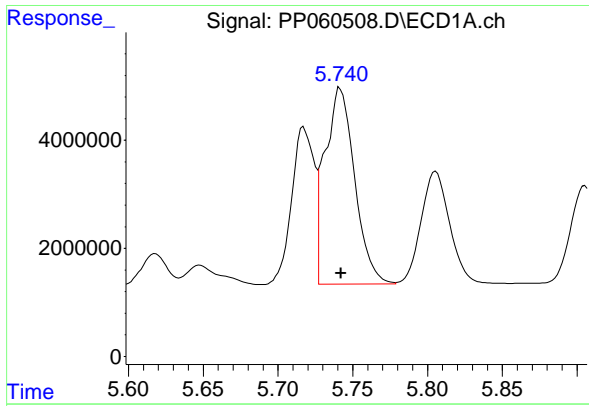
#16 AR-1242-1

R.T.: 5.717 min
 Delta R.T.: -0.002 min
 Response: 30280347
 Conc: 473.82 ng/ml



#16 AR-1242-1

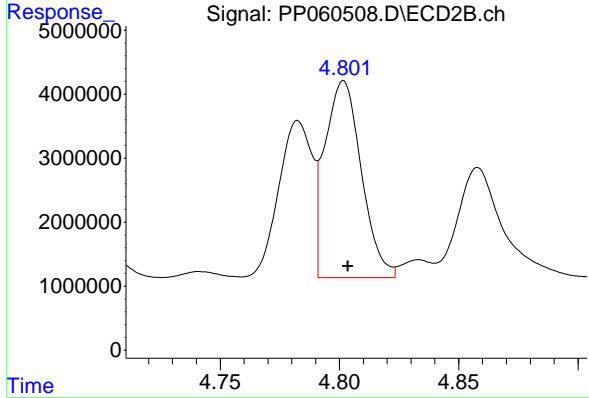
R.T.: 4.783 min
 Delta R.T.: -0.002 min
 Response: 23981504
 Conc: 473.69 ng/ml



#17 AR-1242-2

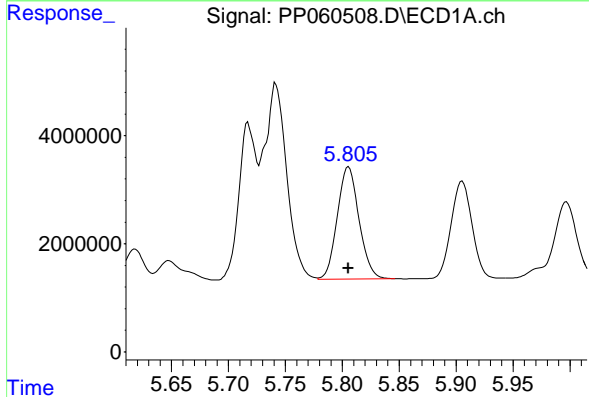
R.T.: 5.742 min
 Delta R.T.: 0.000 min
 Response: 50618424
 Conc: 559.03 ng/ml

Instrument :
 ECD_P
 ClientSampleId :



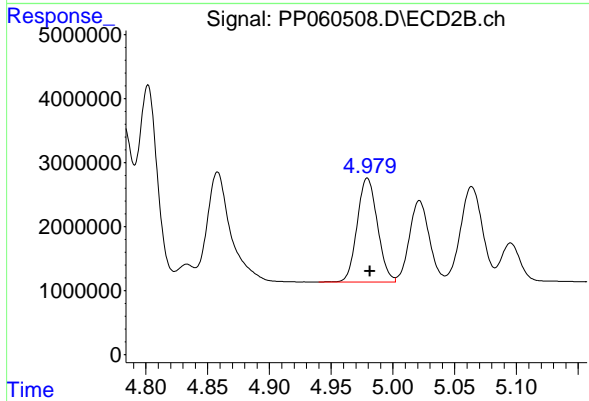
#17 AR-1242-2

R.T.: 4.802 min
 Delta R.T.: -0.002 min
 Response: 32783338
 Conc: 472.08 ng/ml



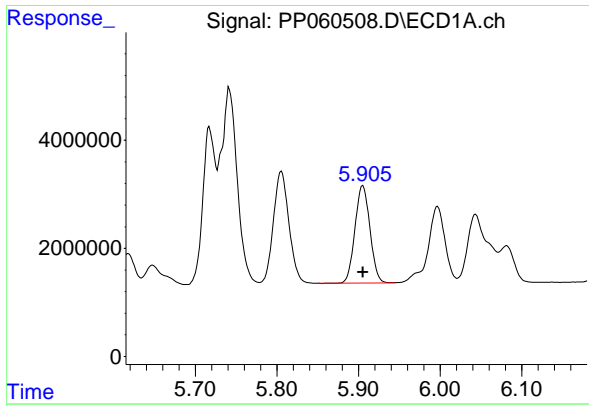
#18 AR-1242-3

R.T.: 5.806 min
 Delta R.T.: 0.000 min
 Response: 27557795
 Conc: 489.48 ng/ml



#18 AR-1242-3

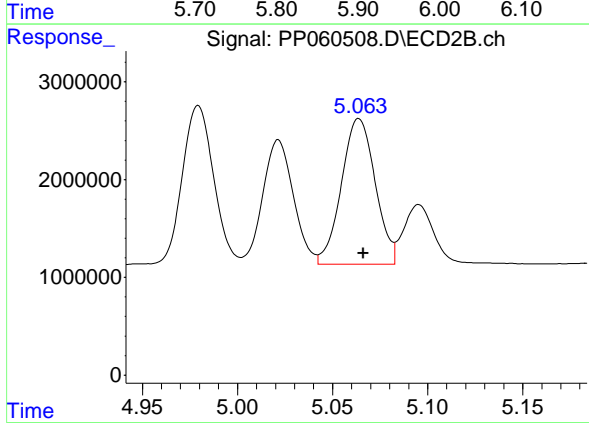
R.T.: 4.979 min
 Delta R.T.: -0.002 min
 Response: 18553266
 Conc: 481.77 ng/ml



#19 AR-1242-4

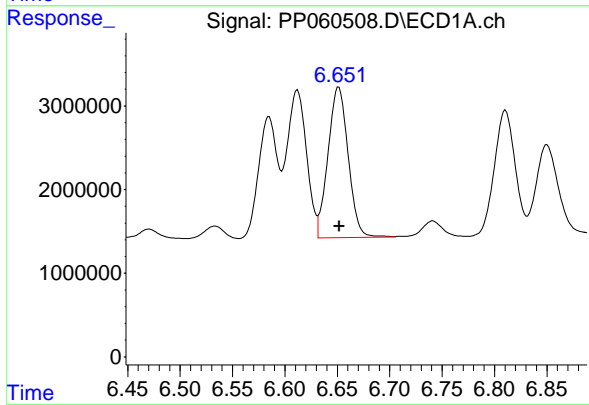
R.T.: 5.905 min
 Delta R.T.: 0.000 min
 Response: 23043653
 Conc: 493.38 ng/ml

Instrument :
 ECD_P
 ClientSampleId :



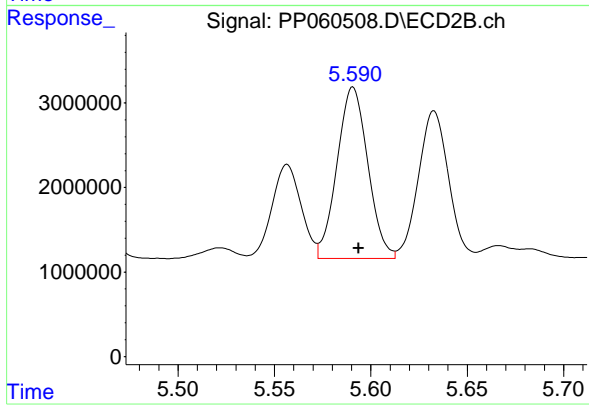
#19 AR-1242-4

R.T.: 5.064 min
 Delta R.T.: -0.002 min
 Response: 18424581
 Conc: 467.83 ng/ml



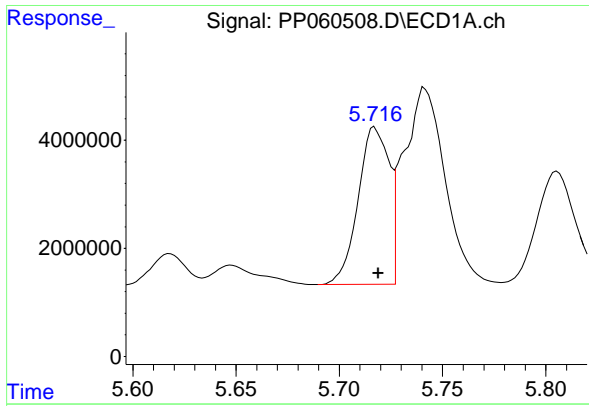
#20 AR-1242-5

R.T.: 6.651 min
 Delta R.T.: 0.000 min
 Response: 24108475
 Conc: 479.33 ng/ml



#20 AR-1242-5

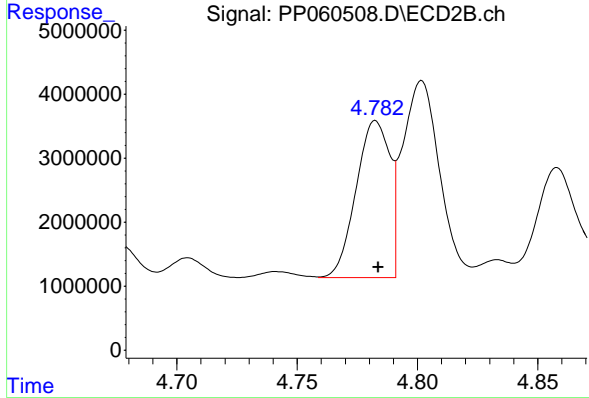
R.T.: 5.591 min
 Delta R.T.: -0.003 min
 Response: 22637011
 Conc: 462.76 ng/ml



#21 AR-1248-1

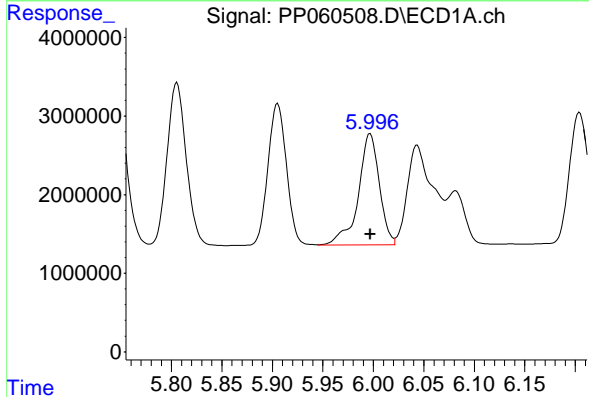
R.T.: 5.717 min
 Delta R.T.: -0.002 min
 Response: 30280347
 Conc: 650.85 ng/ml

Instrument :
 ECD_P
 ClientSampleId :



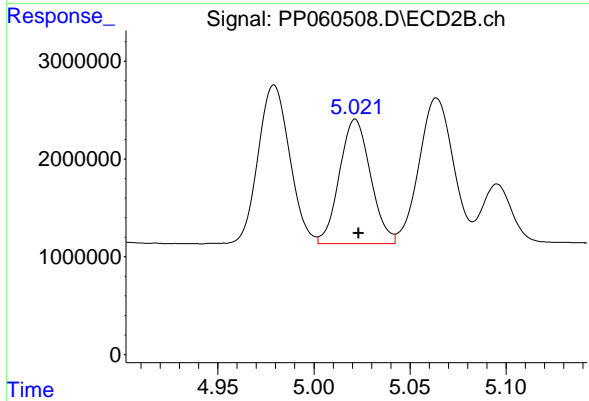
#21 AR-1248-1

R.T.: 4.783 min
 Delta R.T.: -0.001 min
 Response: 23981504
 Conc: 657.14 ng/ml



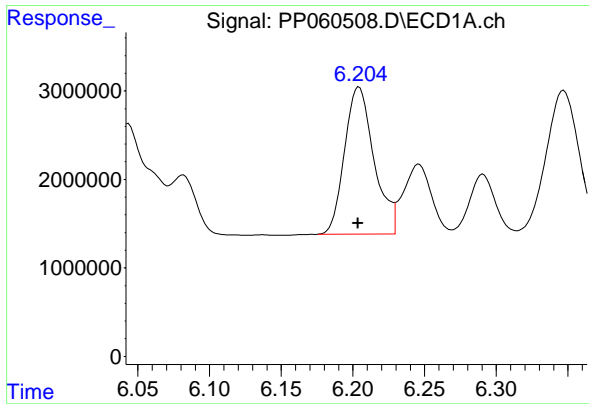
#22 AR-1248-2

R.T.: 5.997 min
 Delta R.T.: 0.000 min
 Response: 20525781
 Conc: 296.04 ng/ml



#22 AR-1248-2

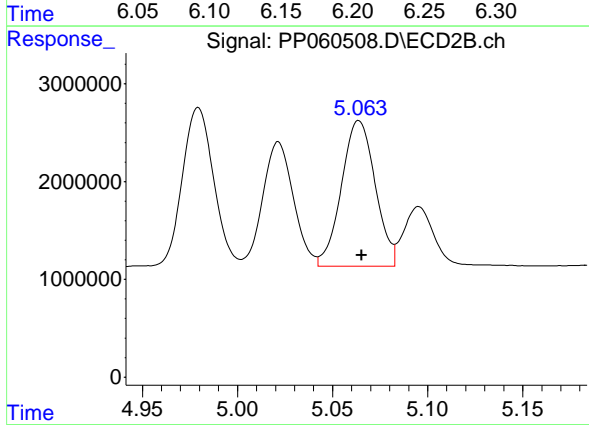
R.T.: 5.021 min
 Delta R.T.: -0.002 min
 Response: 14282789
 Conc: 273.24 ng/ml



#23 AR-1248-3

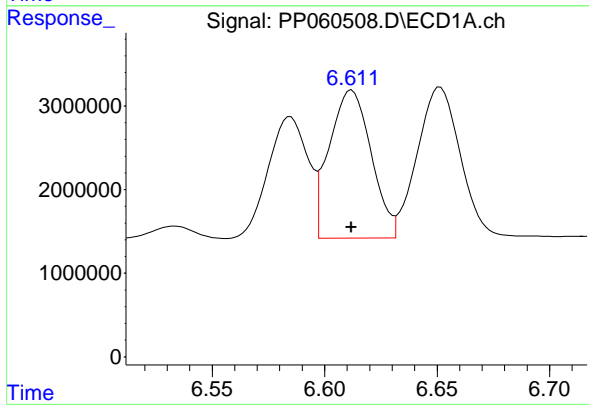
R.T.: 6.204 min
 Delta R.T.: 0.000 min
 Response: 23738256
 Conc: 312.55 ng/ml

Instrument :
 ECD_P
 ClientSampleId :



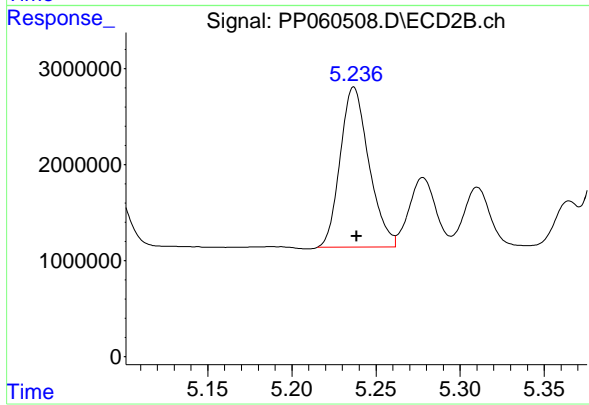
#23 AR-1248-3

R.T.: 5.064 min
 Delta R.T.: -0.002 min
 Response: 18424581
 Conc: 331.83 ng/ml



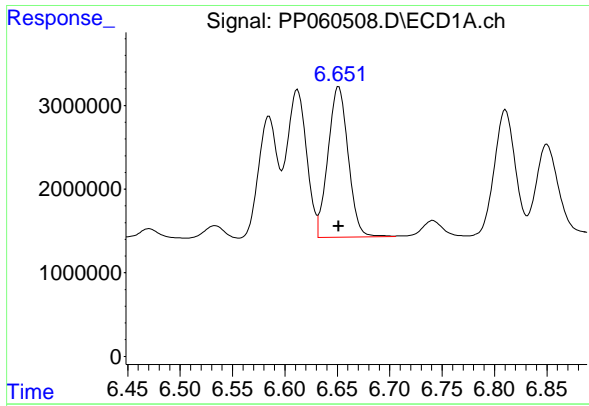
#24 AR-1248-4

R.T.: 6.612 min
 Delta R.T.: 0.000 min
 Response: 22983096
 Conc: 277.89 ng/ml



#24 AR-1248-4

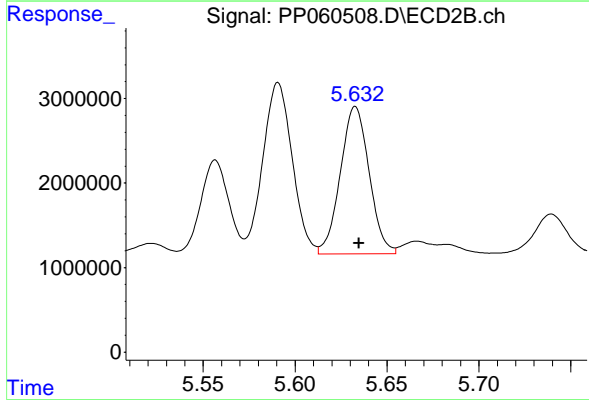
R.T.: 5.237 min
 Delta R.T.: -0.002 min
 Response: 19815455
 Conc: 301.02 ng/ml



#25 AR-1248-5

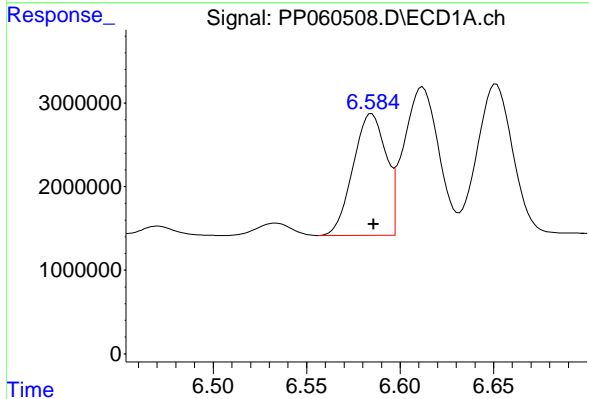
R.T.: 6.651 min
 Delta R.T.: 0.000 min
 Response: 24108475
 Conc: 299.55 ng/ml

Instrument :
 ECD_P
 ClientSampleId :



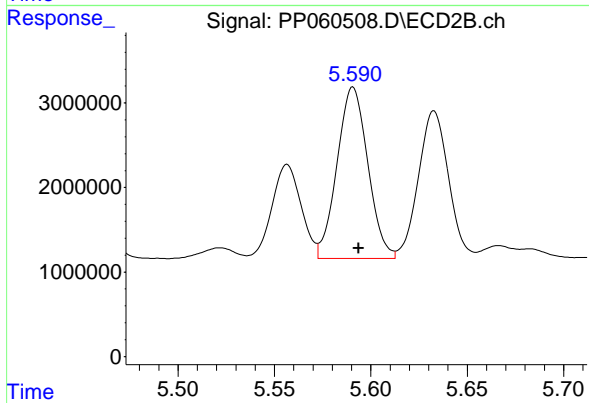
#25 AR-1248-5

R.T.: 5.633 min
 Delta R.T.: -0.002 min
 Response: 19034669
 Conc: 295.93 ng/ml



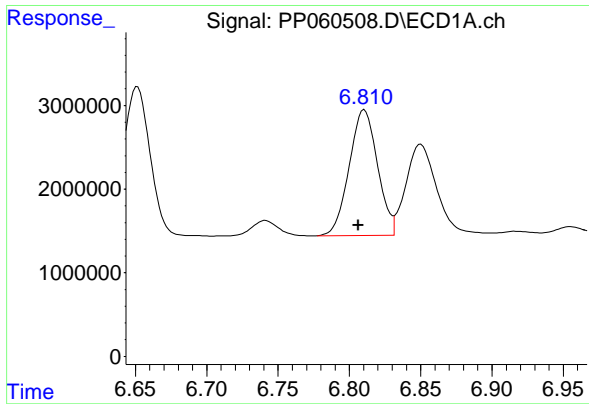
#26 AR-1254-1

R.T.: 6.585 min
 Delta R.T.: -0.001 min
 Response: 17838956
 Conc: 209.03 ng/ml



#26 AR-1254-1

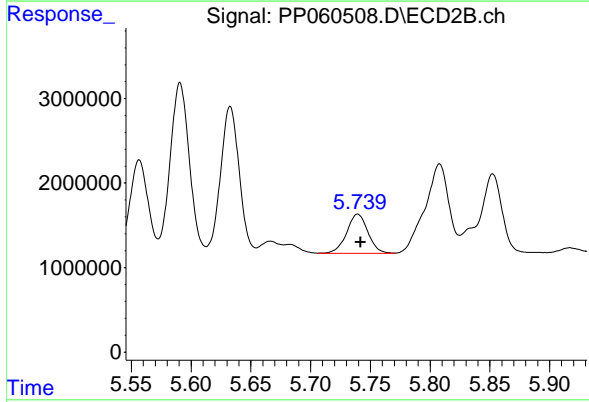
R.T.: 5.591 min
 Delta R.T.: -0.003 min
 Response: 22637011
 Conc: 228.84 ng/ml



#27 AR-1254-2

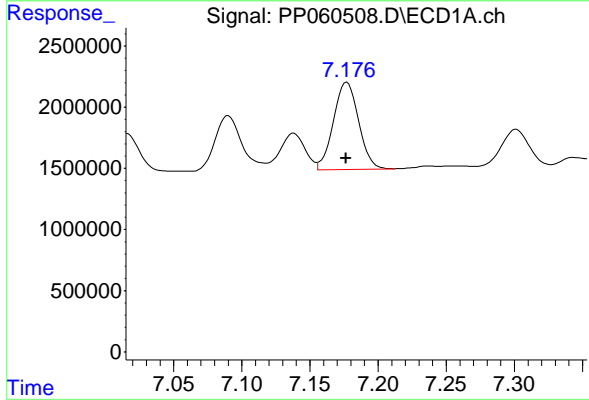
R.T.: 6.810 min
 Delta R.T.: 0.004 min
 Response: 20803771
 Conc: 163.01 ng/ml

Instrument :
 ECD_P
 ClientSampleId :



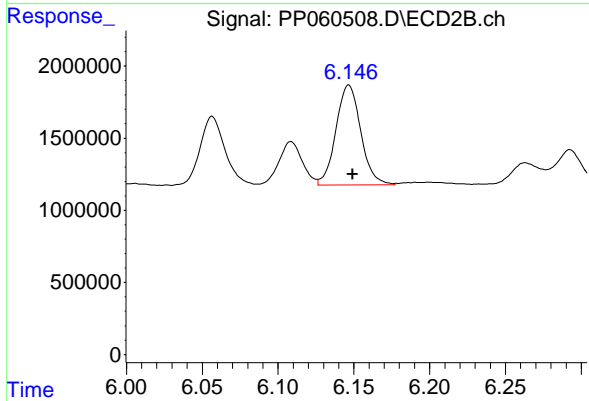
#27 AR-1254-2

R.T.: 5.739 min
 Delta R.T.: -0.002 min
 Response: 5766268
 Conc: 67.09 ng/ml



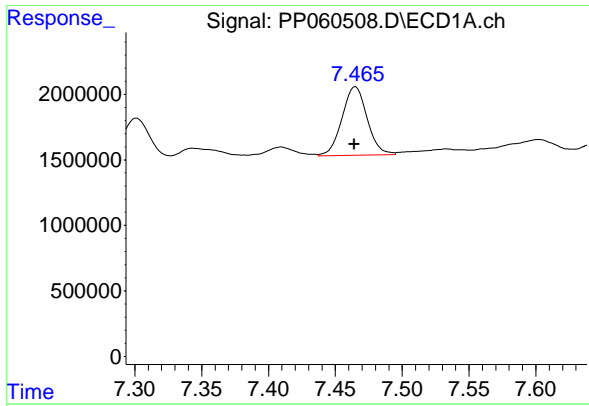
#28 AR-1254-3

R.T.: 7.177 min
 Delta R.T.: 0.000 min
 Response: 9168861
 Conc: 68.98 ng/ml



#28 AR-1254-3

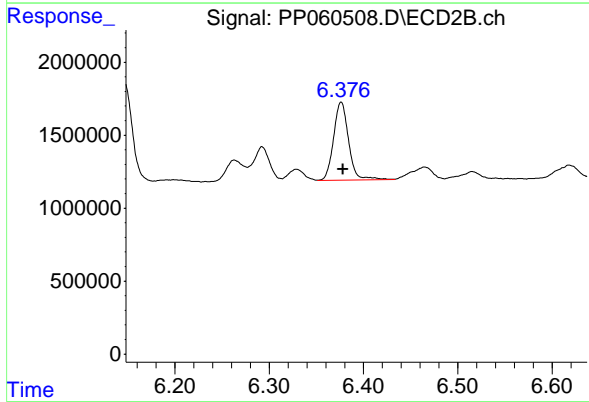
R.T.: 6.147 min
 Delta R.T.: -0.003 min
 Response: 7874952
 Conc: 54.94 ng/ml



#29 AR-1254-4

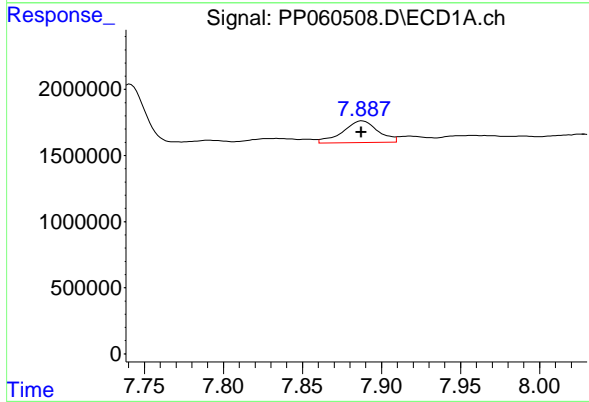
R.T.: 7.465 min
 Delta R.T.: 0.001 min
 Response: 6840113
 Conc: 69.56 ng/ml

Instrument :
 ECD_P
 ClientSampleId :



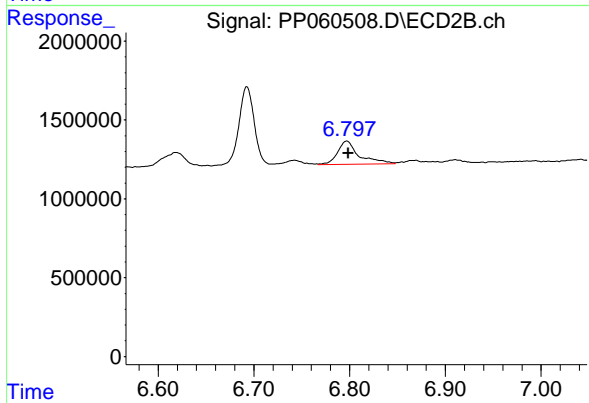
#29 AR-1254-4

R.T.: 6.376 min
 Delta R.T.: -0.002 min
 Response: 5901232
 Conc: 67.70 ng/ml



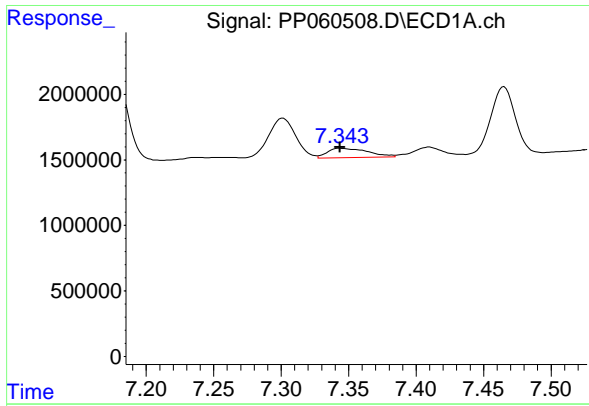
#30 AR-1254-5

R.T.: 7.888 min
 Delta R.T.: 0.000 min
 Response: 2541675
 Conc: 23.46 ng/ml



#30 AR-1254-5

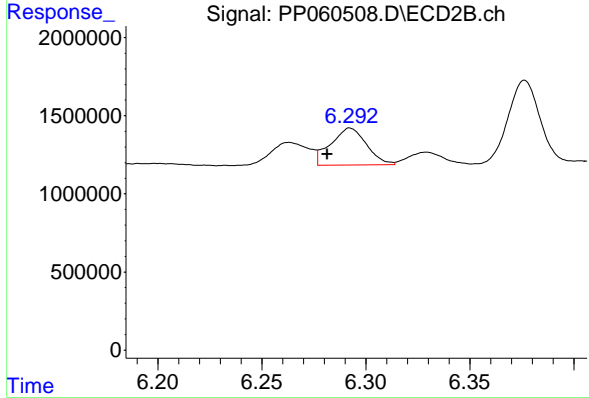
R.T.: 6.797 min
 Delta R.T.: -0.002 min
 Response: 2273351
 Conc: 17.94 ng/ml



#31 AR-1260-1

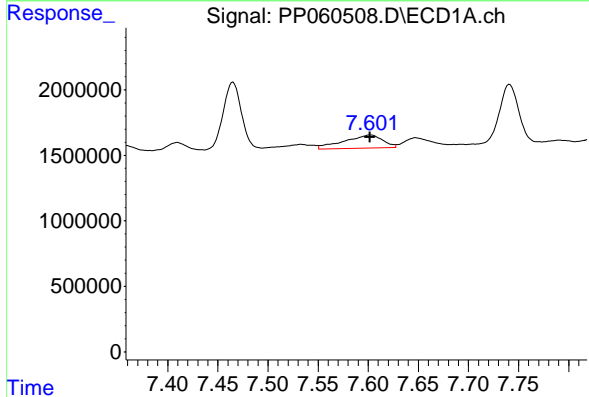
R.T.: 7.344 min
 Delta R.T.: 0.000 min
 Response: 1509631
 Conc: 14.40 ng/ml

Instrument :
 ECD_P
 ClientSampleId :



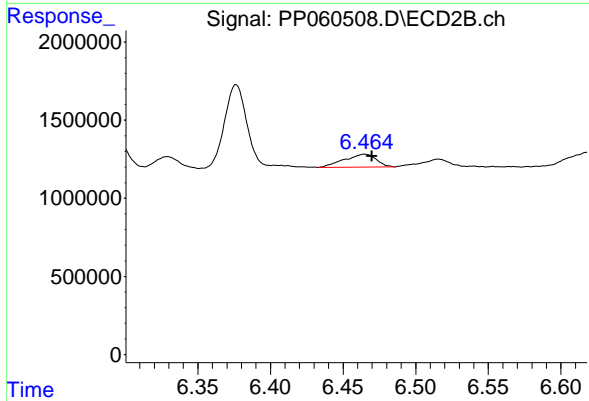
#31 AR-1260-1

R.T.: 6.292 min
 Delta R.T.: 0.011 min
 Response: 2825407
 Conc: 28.15 ng/ml



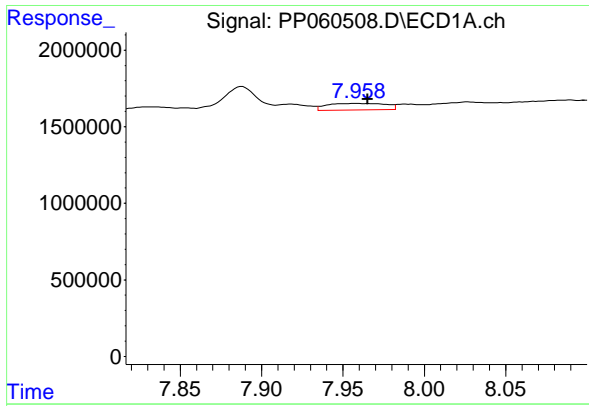
#32 AR-1260-2

R.T.: 7.602 min
 Delta R.T.: 0.000 min
 Response: 2697611
 Conc: 22.31 ng/ml



#32 AR-1260-2

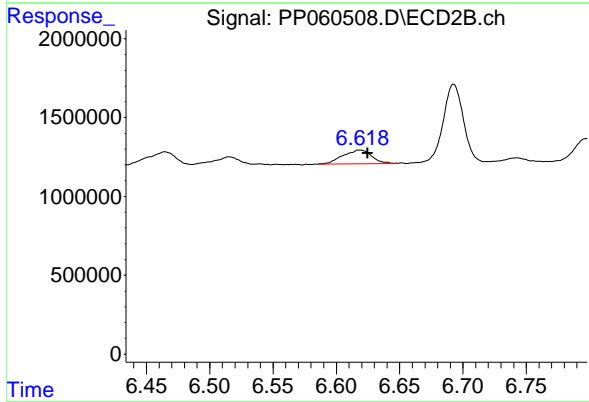
R.T.: 6.465 min
 Delta R.T.: -0.005 min
 Response: 1264895
 Conc: 10.60 ng/ml



#33 AR-1260-3

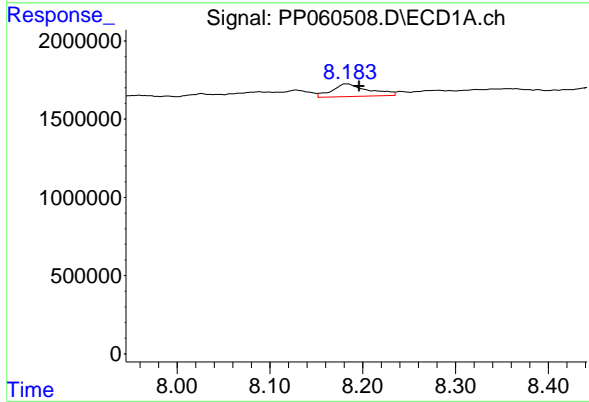
R.T.: 7.958 min
 Delta R.T.: -0.007 min
 Response: 1077383
 Conc: 11.62 ng/ml

Instrument :
 ECD_P
 ClientSampleId :



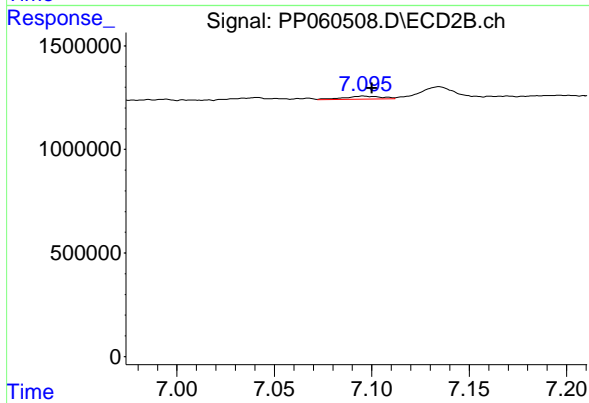
#33 AR-1260-3

R.T.: 6.618 min
 Delta R.T.: -0.006 min
 Response: 1400545
 Conc: 12.23 ng/ml



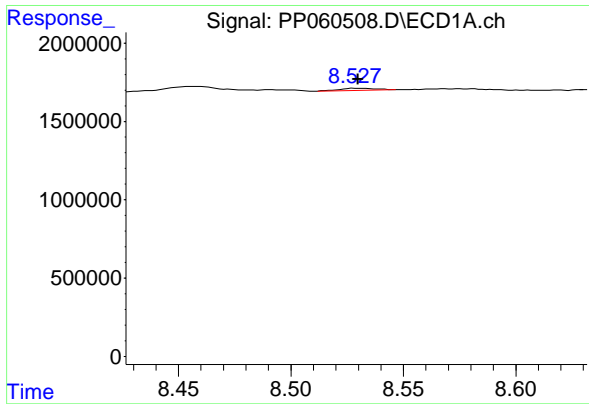
#34 AR-1260-4

R.T.: 8.184 min
 Delta R.T.: -0.013 min
 Response: 2200026
 Conc: 20.75 ng/ml



#34 AR-1260-4

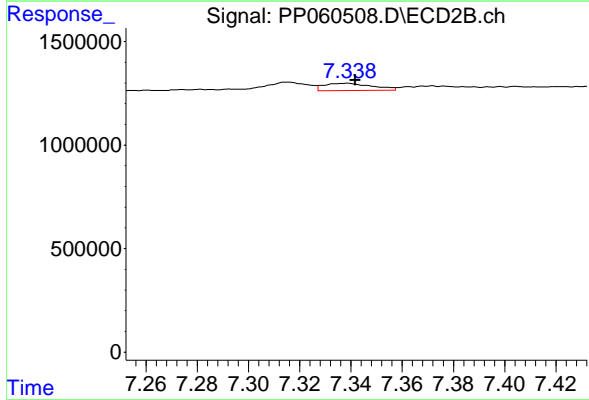
R.T.: 7.096 min
 Delta R.T.: -0.005 min
 Response: 202237
 Conc: 2.12 ng/ml



#35 AR-1260-5

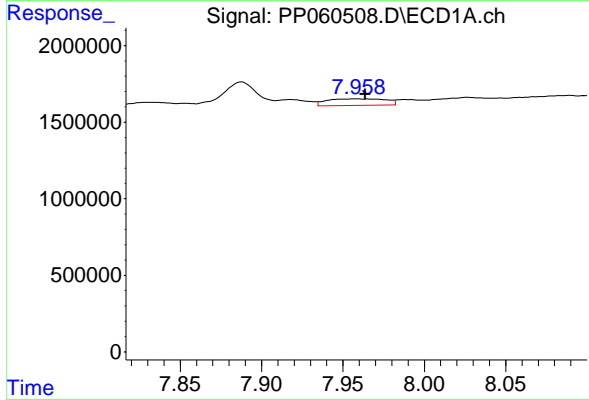
R.T.: 8.529 min
 Delta R.T.: 0.000 min
 Response: 146616
 Conc: 0.76 ng/ml

Instrument :
 ECD_P
 ClientSampleId :



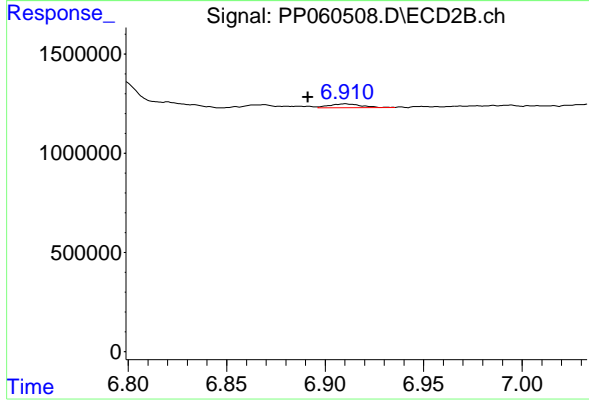
#35 AR-1260-5

R.T.: 7.338 min
 Delta R.T.: -0.004 min
 Response: 461502
 Conc: 2.13 ng/ml



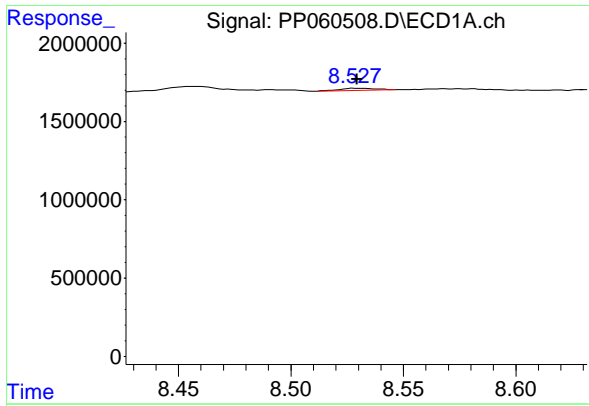
#36 AR-1262-1

R.T.: 7.958 min
 Delta R.T.: -0.005 min
 Response: 1077383
 Conc: 8.64 ng/ml



#36 AR-1262-1

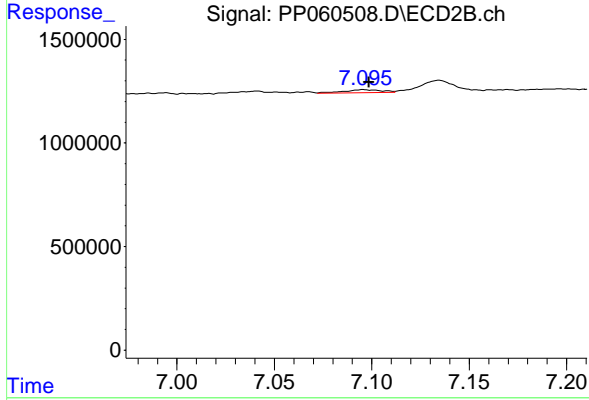
R.T.: 6.910 min
 Delta R.T.: 0.019 min
 Response: 216980
 Conc: 4.05 ng/ml



#37 AR-1262-2

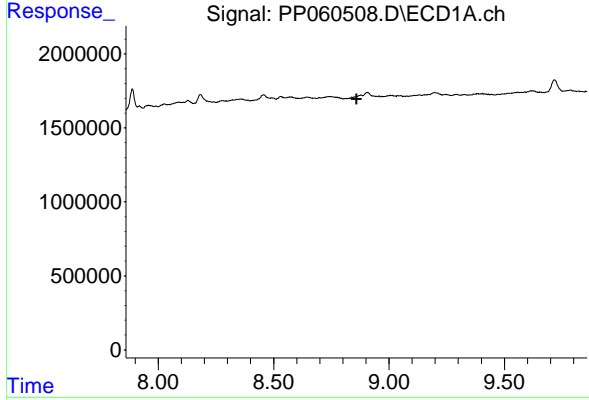
R.T.: 8.529 min
 Delta R.T.: 0.000 min
 Response: 146616
 Conc: 0.70 ng/ml

Instrument :
 ECD_P
 ClientSampleId :



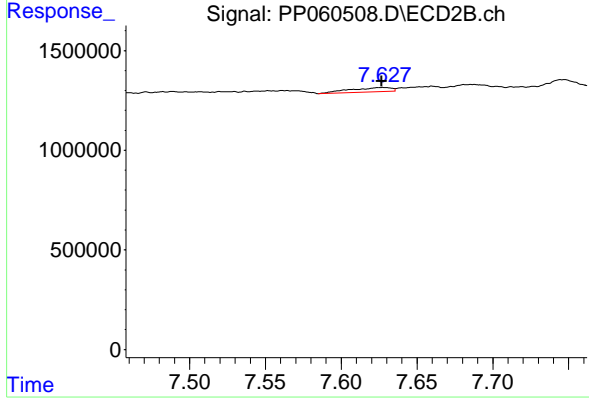
#37 AR-1262-2

R.T.: 7.096 min
 Delta R.T.: -0.003 min
 Response: 202237
 Conc: 1.71 ng/ml



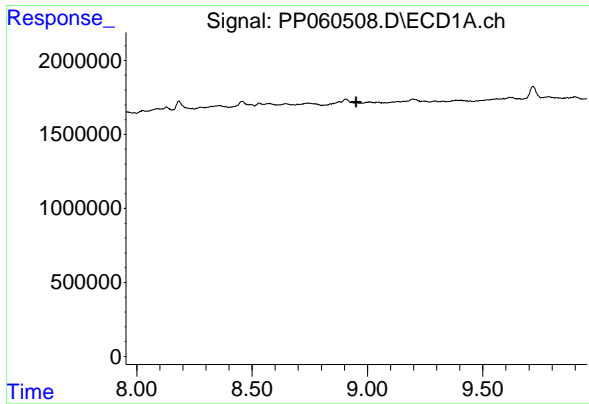
#38 AR-1262-3

R.T.: 0.000 min
 Exp R.T. : 8.859 min
 Response: 0
 Conc: N.D.



#38 AR-1262-3

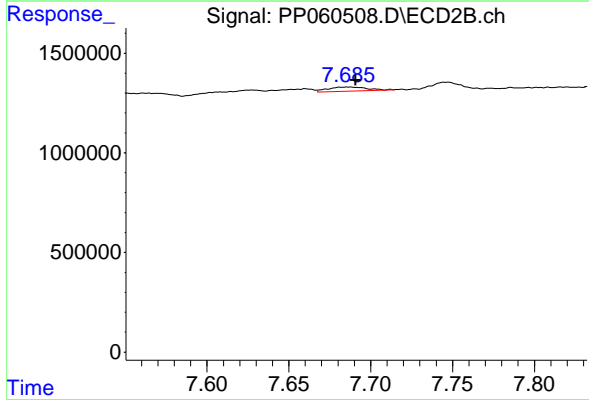
R.T.: 7.628 min
 Delta R.T.: 0.001 min
 Response: 406910
 Conc: 4.41 ng/ml



#39 AR-1262-4

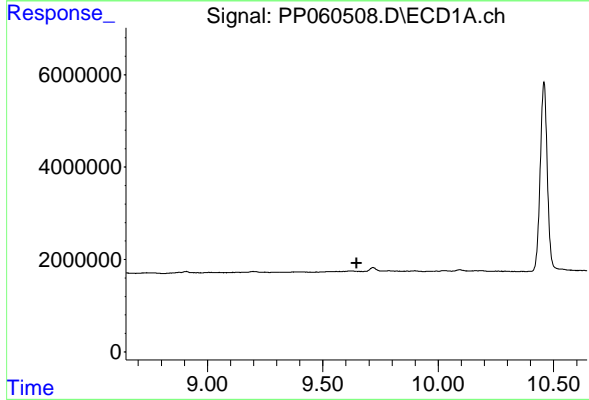
R.T.: 0.000 min
 Exp R.T.: 8.952 min
 Response: 0
 Conc: N.D.

Instrument : ECD_P
 ClientSampleId :



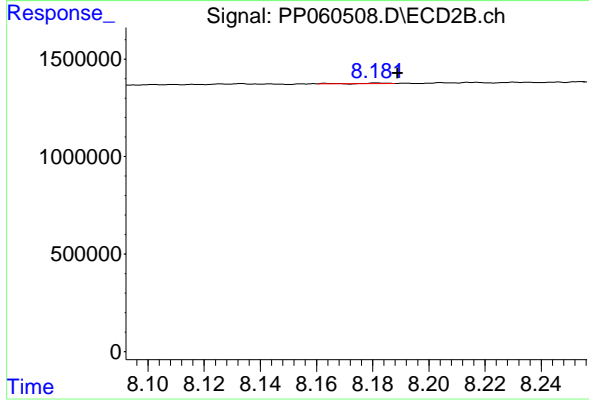
#39 AR-1262-4

R.T.: 7.686 min
 Delta R.T.: -0.004 min
 Response: 333670
 Conc: 1.98 ng/ml



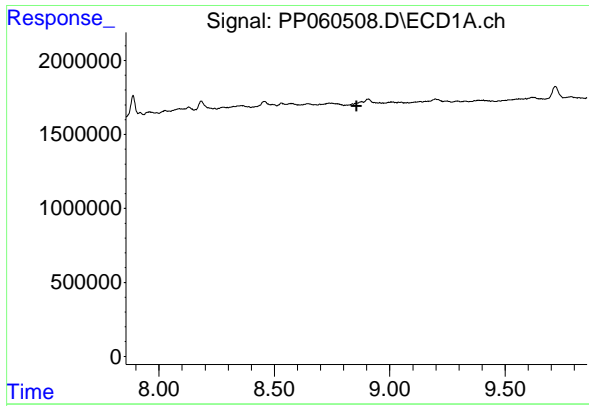
#40 AR-1262-5

R.T.: 0.000 min
 Exp R.T.: 9.646 min
 Response: 0
 Conc: N.D.



#40 AR-1262-5

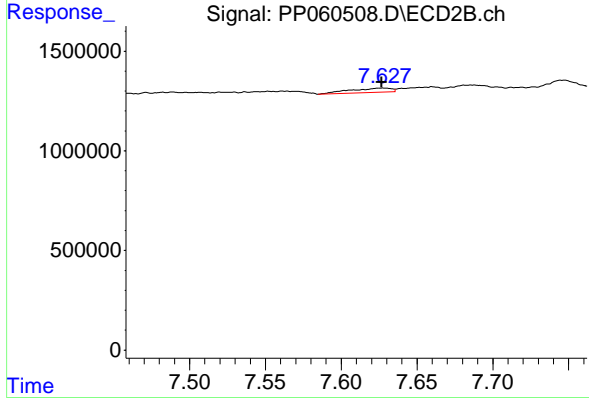
R.T.: 8.182 min
 Delta R.T.: -0.007 min
 Response: 10307
 Conc: 0.13 ng/ml



#41 AR-1268-1

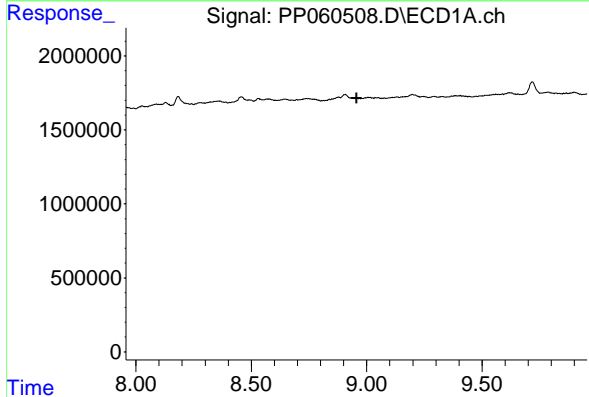
R.T.: 0.000 min
 Exp R.T.: 8.856 min
 Response: 0
 Conc: N.D.

Instrument : ECD_P
 ClientSampleId :



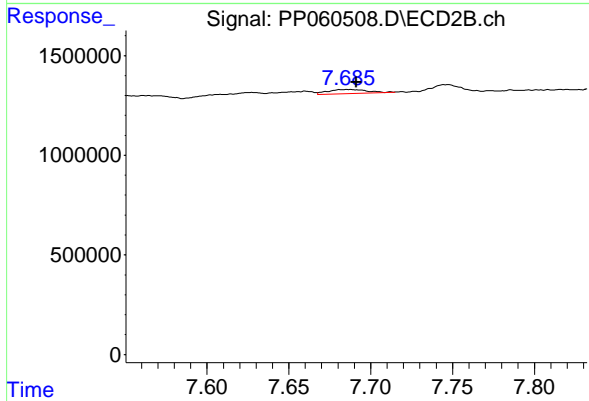
#41 AR-1268-1

R.T.: 7.628 min
 Delta R.T.: 0.001 min
 Response: 406910
 Conc: 1.50 ng/ml



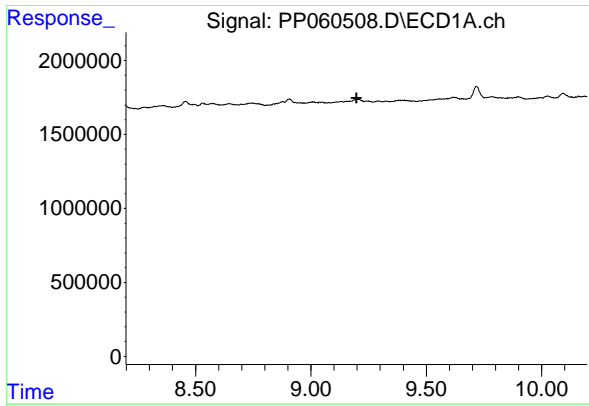
#42 AR-1268-2

R.T.: 0.000 min
 Exp R.T.: 8.956 min
 Response: 0
 Conc: N.D.



#42 AR-1268-2

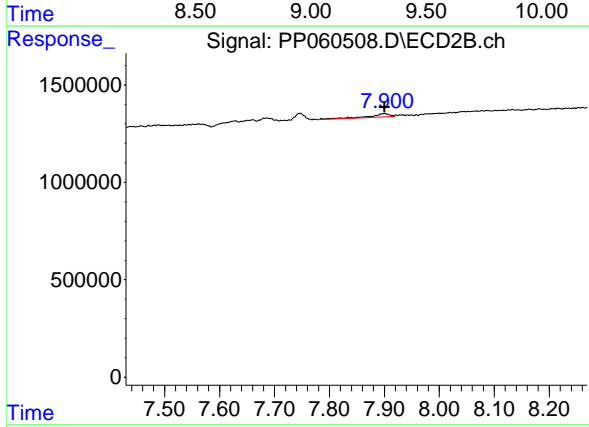
R.T.: 7.686 min
 Delta R.T.: -0.005 min
 Response: 333670
 Conc: 1.37 ng/ml



#43 AR-1268-3

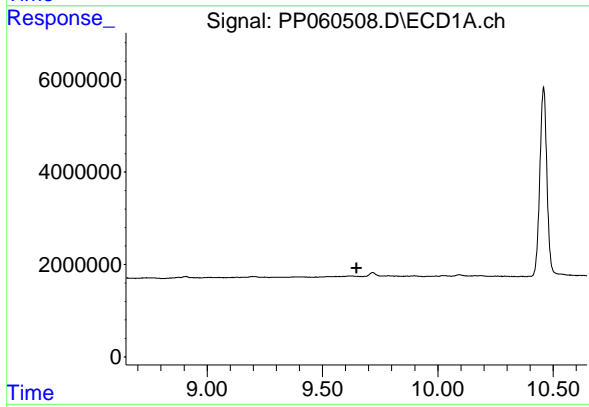
R.T.: 0.000 min
 Exp R.T.: 9.198 min
 Response: 0
 Conc: N.D.

Instrument :
 ECD_P
 ClientSampleId :



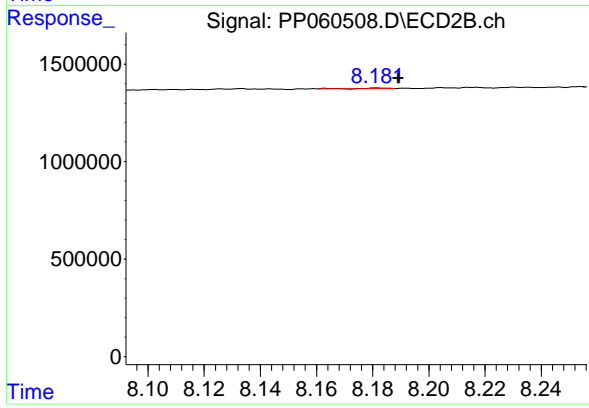
#43 AR-1268-3

R.T.: 7.900 min
 Delta R.T.: 0.000 min
 Response: 406467
 Conc: 1.90 ng/ml



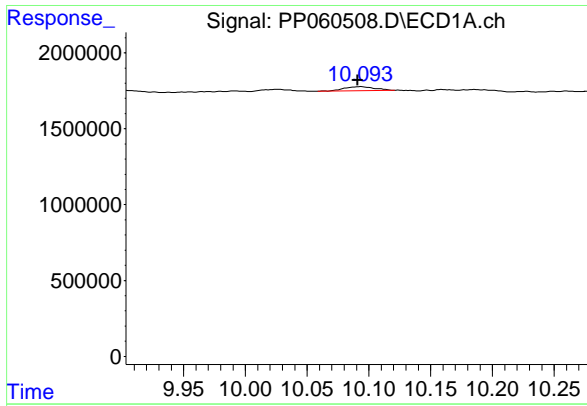
#44 AR-1268-4

R.T.: 0.000 min
 Exp R.T.: 9.648 min
 Response: 0
 Conc: N.D.



#44 AR-1268-4

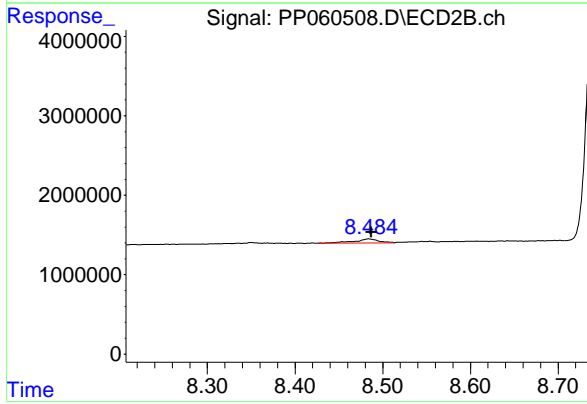
R.T.: 8.182 min
 Delta R.T.: -0.007 min
 Response: 10307
 Conc: 0.12 ng/ml



#45 AR-1268-5

R.T.: 10.094 min
 Delta R.T.: 0.003 min
 Response: 481940
 Conc: 0.76 ng/ml

Instrument :
 ECD_P
 ClientSampleId :



#45 AR-1268-5

R.T.: 8.484 min
 Delta R.T.: -0.003 min
 Response: 979459
 Conc: 1.57 ng/ml