

Data Path : Z:\pestpcbsrv\HPCHEM1\ECD_P\Data\PP100322\
 Data File : PP051858.D
 Signal(s) : Signal #1: ECD1A.ch Signal #2: ECD2B.ch
 Acq On : 04 Oct 2022 00:55
 Operator : YP\AJ
 Sample : N4892-01RE
 Misc :
 ALS Vial : 36 Sample Multiplier: 1

Instrument :
 ECD_P
ClientSampleId :
 TOPSOIL-STORMWATER-DENALI

Integration File signal 1: autoint1.e
 Integration File signal 2: autoint2.e
 Quant Time: Oct 04 04:55:56 2022
 Quant Method : Z:\pestpcbsrv\HPCHEM1\ECD_P\methods\PP100322.M
 Quant Title : GC EXTRACTABLES
 QLast Update : Tue Oct 04 03:12:26 2022
 Response via : Initial Calibration
 Integrator: ChemStation

Volume Inj. : 2 µl
 Signal #1 Phase : ZB-MR1 Signal #2 Phase: ZB-MR2
 Signal #1 Info : 30Mx0.32mmx 0.50µ Signal #2 Info : 30M x 0.32mm x 0.25µm

Compound	RT#1	RT#2	Resp#1	Resp#2	ng/ml	ng/ml

System Monitoring Compounds						
1) SA Tetrachlo...	4.421	3.672	32047744	23614188	17.931	18.574
2) SA Decachlor...	10.237	8.768	15282344	14549476	12.606	12.318
Target Compounds						
3) L1 AR-1016-1	5.583	0.000	150722	0	3.326	N.D. #
4) L1 AR-1016-2	5.624	0.000	225730	0	3.517	N.D. #
6) L1 AR-1016-4	5.759f	5.017	2778125	182408	79.245	7.053 #
7) L1 AR-1016-5	6.090	0.000	640963	0	15.520	N.D. #
8) L2 AR-1221-1	4.629	3.878	1943567	1218376	90.161	77.792
9) L2 AR-1221-2	4.729	3.978	371993	1870244	23.336	156.542 #
10) L2 AR-1221-3	4.813f	4.052	2744324	1601479	56.674	42.687
11) L3 AR-1232-1	4.813f	4.052	2744324	1601479	68.392	51.446
12) L3 AR-1232-2	5.309f	0.000	3105216	0	165.467	N.D. #
14) L3 AR-1232-4	5.759f	0.000	2778125	0	194.084	N.D. #
15) L3 AR-1232-5	5.876	0.000	678388	0	56.701	N.D. #
16) L4 AR-1242-1	5.583	0.000	150722	0	3.676	N.D. #
17) L4 AR-1242-2	5.624	0.000	225730	0	3.925	N.D. #
19) L4 AR-1242-4	5.759f	5.091f	2778125	1709513	96.482	57.956 #
20) L4 AR-1242-5	6.536	5.602	229207	3649265	6.086	99.963 #
21) L5 AR-1248-1	5.583	0.000	150722	0	4.976	N.D. #
22) L5 AR-1248-2	5.876	5.017	678388	182408	14.971	4.528 #
23) L5 AR-1248-3	6.090	5.091f	640963	1709513	12.622	40.277 #
24) L5 AR-1248-4	6.493	0.000	2237859	0	33.493	N.D. #
25) L5 AR-1248-5	6.536	0.000	229207	0	3.488	N.D. #
26) L6 AR-1254-1	6.467	5.602	3872092	3649265	56.747	49.053
27) L6 AR-1254-2	6.681	5.743	4444953	1179554	43.435	18.292 #
28) L6 AR-1254-3	7.052	6.170f	5746736	4559637	56.129	43.308
29) L6 AR-1254-4	7.330	6.382	715758	289237	9.978	4.243 #
30) L6 AR-1254-5	7.770f	6.804	18488364	18068972	245.751	195.308
31) L7 AR-1260-1	7.208	6.284	2862845	3705486	40.276	53.796 #
32) L7 AR-1260-2	7.457	6.473	22718298	1818490	278.151	21.609 #
33) L7 AR-1260-3	7.827	6.631	2828823	-863491	49.460	N.D. #
34) L7 AR-1260-4	8.053	7.106	2813746	2238029	42.962	35.551
35) L7 AR-1260-5	8.376	7.348	4858485	5015661	38.209	34.199
36) L8 AR-1262-1	7.827	6.897	2828823	965348	32.532	25.687
37) L8 AR-1262-2	8.376	7.106	4858485	2238029	32.930	26.424
38) L8 AR-1262-3	8.695	7.635	3260280	3101792	31.668	44.231 #
39) L8 AR-1262-4	8.787	7.700	3285631	4385252	71.367	35.097 #
40) L8 AR-1262-5	9.456	8.200	4137942	2017730	72.618	35.613 #
41) L9 AR-1268-1	8.695	7.635	3260280	3101792	18.278	15.626
42) L9 AR-1268-2	8.787	7.700	3285631	4385252	19.820	24.539
43) L9 AR-1268-3	9.021	7.910	931610	2246347	6.498	14.685 #
44) L9 AR-1268-4	9.456	8.200	4137942	2017730	64.598	32.145 #

Data Path : Z:\pestpcbsrv\HPCHEM1\ECD_P\Data\PP100322\
 Data File : PP051858.D
 Signal(s) : Signal #1: ECD1A.ch Signal #2: ECD2B.ch
 Acq On : 04 Oct 2022 00:55
 Operator : YP\AJ
 Sample : N4892-01RE
 Misc :
 ALS Vial : 36 Sample Multiplier: 1

Instrument :
 ECD_P
ClientSampleId :
 TOPSOIL-STORMWATER-DENALI

Integration File signal 1: autoint1.e
 Integration File signal 2: autoint2.e
 Quant Time: Oct 04 04:55:56 2022
 Quant Method : Z:\pestpcbsrv\HPCHEM1\ECD_P\methods\PP100322.M
 Quant Title : GC EXTRACTABLES
 QLast Update : Tue Oct 04 03:12:26 2022
 Response via : Initial Calibration
 Integrator: ChemStation

Volume Inj. : 2 µl
 Signal #1 Phase : ZB-MR1 Signal #2 Phase: ZB-MR2
 Signal #1 Info : 30Mx0.32mmx 0.50µ Signal #2 Info : 30M x 0.32mm x 0.25µm

Compound	RT#1	RT#2	Resp#1	Resp#2	ng/ml	ng/ml
45) L9 AR-1268-5	9.887	8.501	1612161	1318840	3.511	2.828

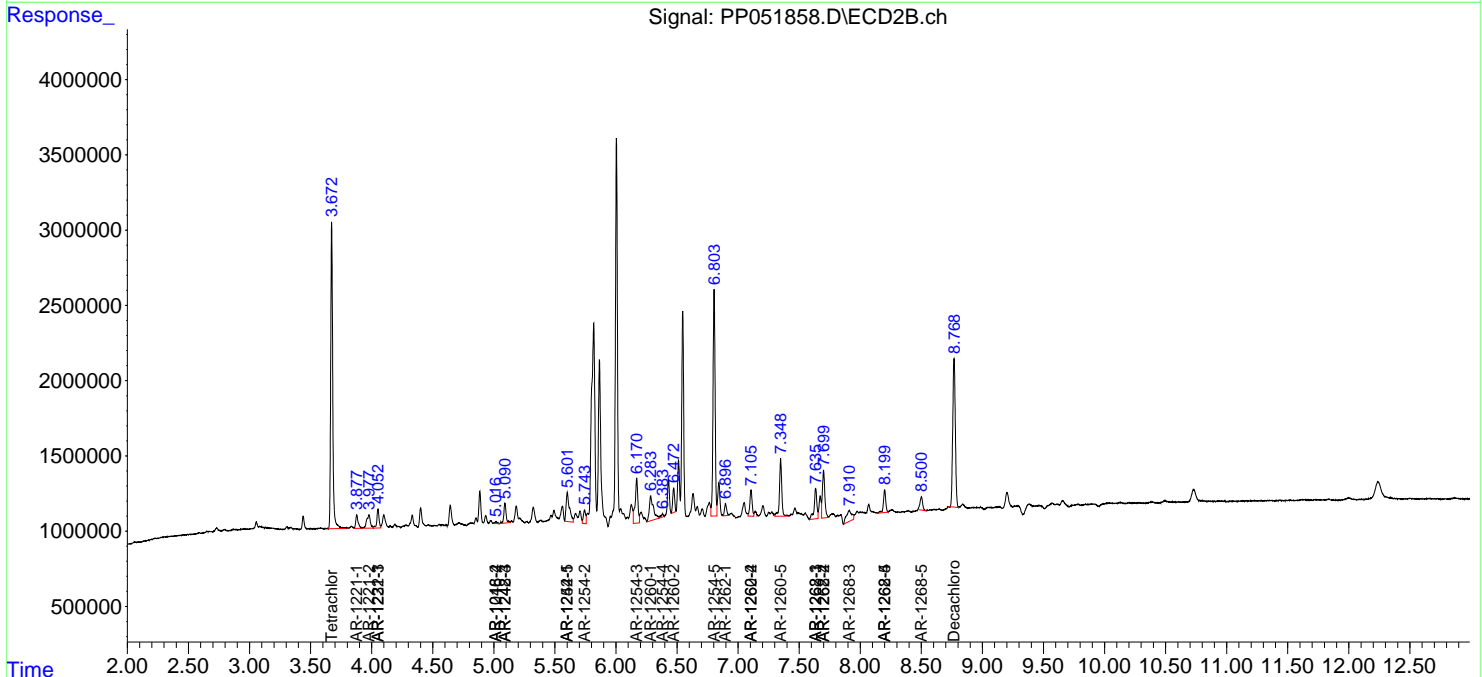
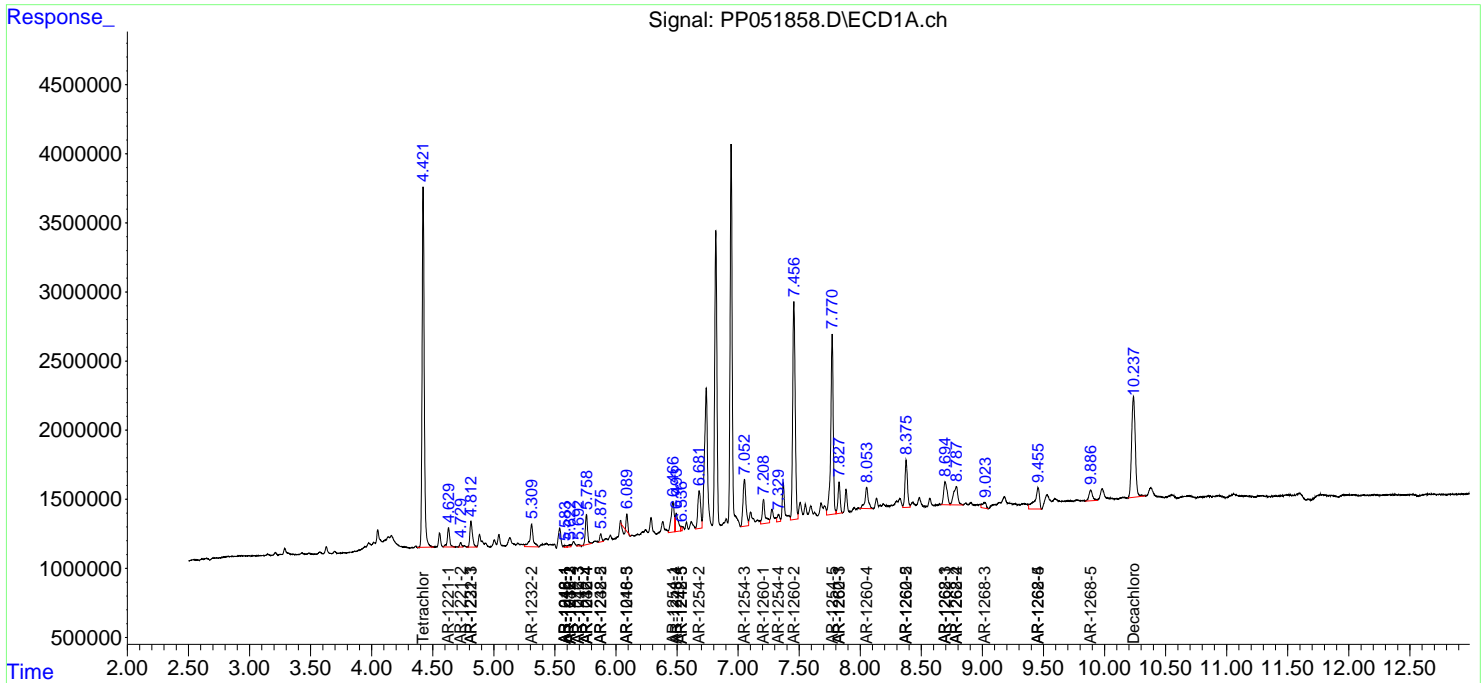
(f)=RT Delta > 1/2 Window (#)=Amounts differ by > 25% (m)=manual int.

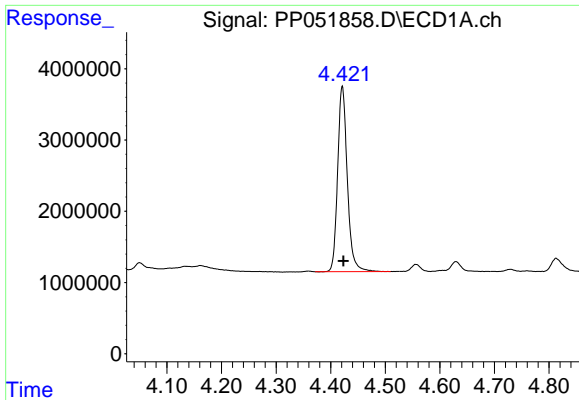
Data Path : Z:\pestpcbsrv\HPCHEM1\ECD_P\Data\PP100322\
 Data File : PP051858.D
 Signal(s) : Signal #1: ECD1A.ch Signal #2: ECD2B.ch
 Acq On : 04 Oct 2022 00:55
 Operator : YP\AJ
 Sample : N4892-01RE
 Misc :
 ALS Vial : 36 Sample Multiplier: 1

Instrument :
 ECD_P
ClientSampleId :
 TOPSOIL-STORMWATER-DENALI

Integration File signal 1: autoint1.e
 Integration File signal 2: autoint2.e
 Quant Time: Oct 04 04:55:56 2022
 Quant Method : Z:\pestpcbsrv\HPCHEM1\ECD_P\methods\PP100322.M
 Quant Title : GC EXTRACTABLES
 QLast Update : Tue Oct 04 03:12:26 2022
 Response via : Initial Calibration
 Integrator: ChemStation

Volume Inj. : 2 µl
 Signal #1 Phase : ZB-MR1 Signal #2 Phase: ZB-MR2
 Signal #1 Info : 30Mx0.32mmx 0.50µ Signal #2 Info : 30M x 0.32mm x 0.25µm

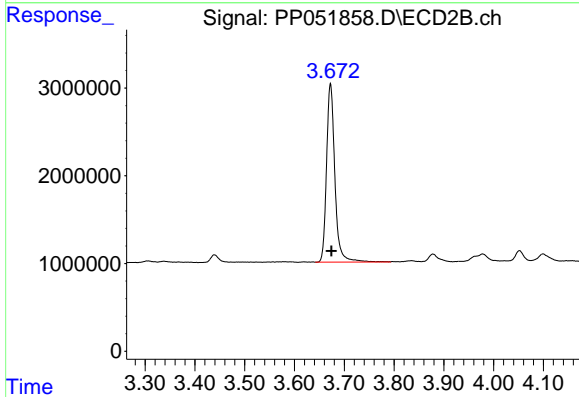




#1 Tetrachloro-m-xylene

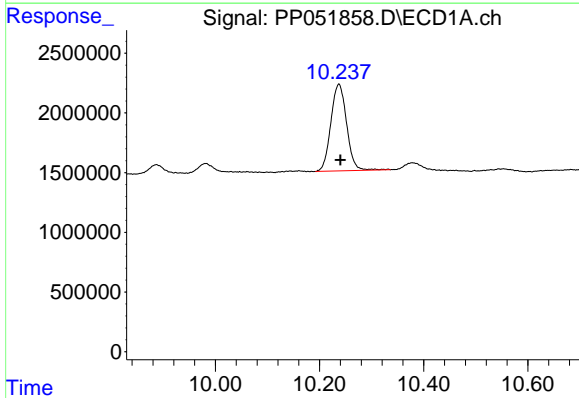
R.T.: 4.421 min
 Delta R.T.: -0.002 min
 Response: 32047744
 Conc: 17.93 ng/ml

Instrument :
 ECD_P
 ClientSampleId :
 TOPSOIL-STORMWATER-DENALI



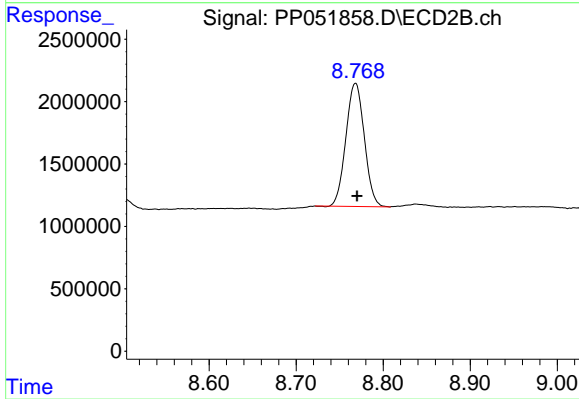
#1 Tetrachloro-m-xylene

R.T.: 3.672 min
 Delta R.T.: -0.002 min
 Response: 23614188
 Conc: 18.57 ng/ml



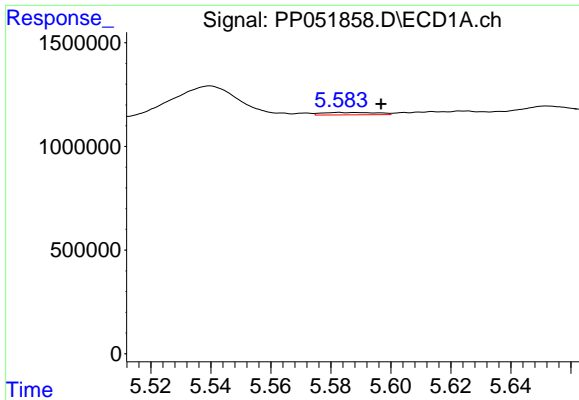
#2 Decachlorobiphenyl

R.T.: 10.237 min
 Delta R.T.: -0.003 min
 Response: 15282344
 Conc: 12.61 ng/ml



#2 Decachlorobiphenyl

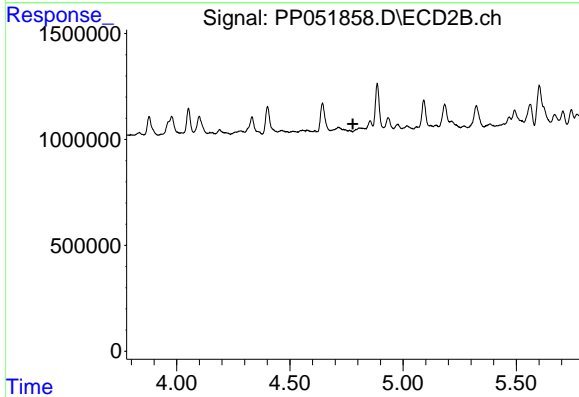
R.T.: 8.768 min
 Delta R.T.: -0.002 min
 Response: 14549476
 Conc: 12.32 ng/ml



#3 AR-1016-1

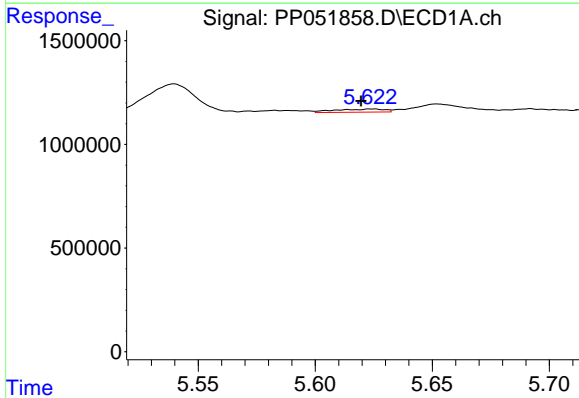
R.T.: 5.583 min
 Delta R.T.: -0.014 min
 Response: 150722
 Conc: 3.33 ng/ml

Instrument : ECD_P
 ClientSampleId : TOPSOIL-STORMWATER-DENALI



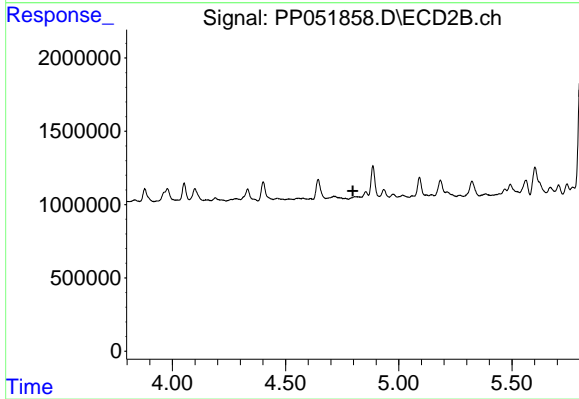
#3 AR-1016-1

R.T.: 0.000 min
 Exp R.T. : 4.778 min
 Response: 0
 Conc: N.D.



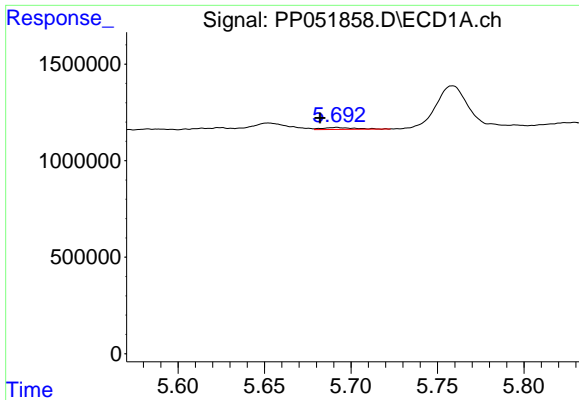
#4 AR-1016-2

R.T.: 5.624 min
 Delta R.T.: 0.005 min
 Response: 225730
 Conc: 3.52 ng/ml



#4 AR-1016-2

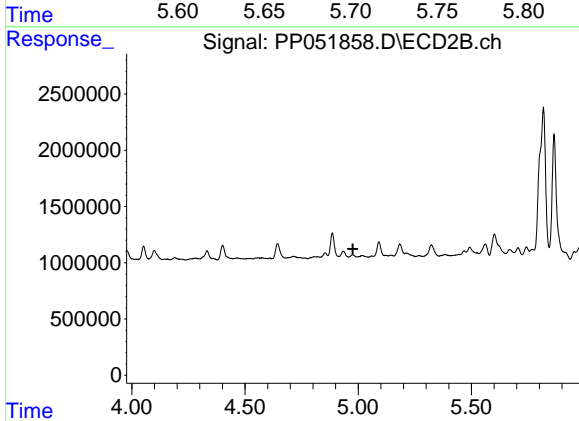
R.T.: 0.000 min
 Exp R.T. : 4.797 min
 Response: 0
 Conc: N.D.



#5 AR-1016-3

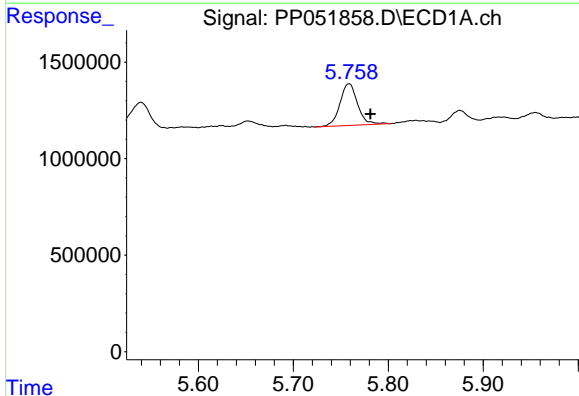
R.T.: 5.692 min
 Delta R.T.: 0.009 min
 Response: 126990
 Conc: 3.18 ng/ml

Instrument :
 ECD_P
 ClientSampleId :
 TOPSOIL-STORMWATER-DENALI



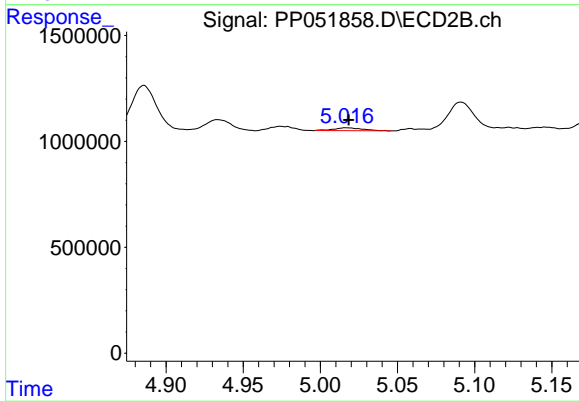
#5 AR-1016-3

R.T.: 4.975 min
 Delta R.T.: -0.002 min
 Response: -256080
 Conc: N.D.



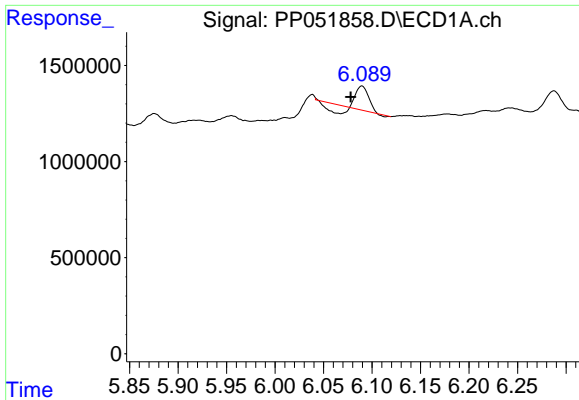
#6 AR-1016-4

R.T.: 5.759 min
 Delta R.T.: -0.022 min
 Response: 2778125
 Conc: 79.24 ng/ml



#6 AR-1016-4

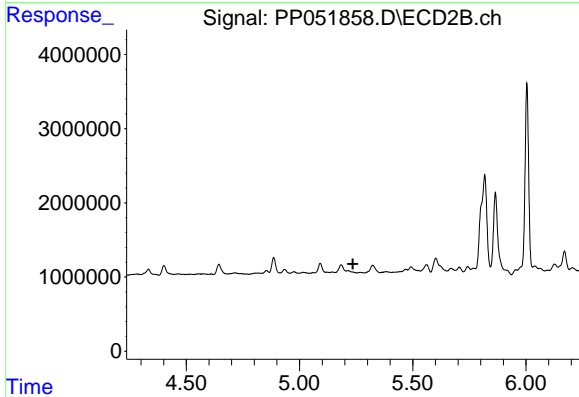
R.T.: 5.017 min
 Delta R.T.: -0.001 min
 Response: 182408
 Conc: 7.05 ng/ml



#7 AR-1016-5

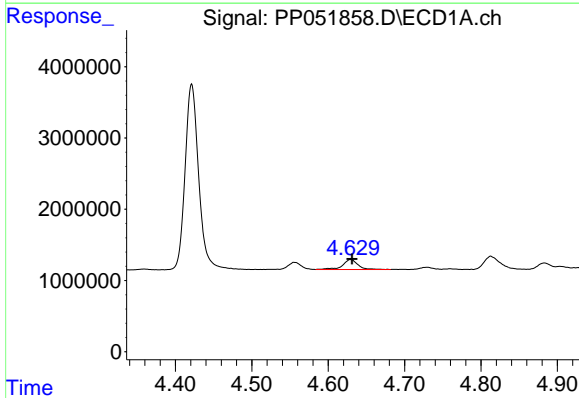
R.T.: 6.090 min
 Delta R.T.: 0.011 min
 Response: 640963
 Conc: 15.52 ng/ml

Instrument :
 ECD_P
 ClientSampleId :
 TOPSOIL-STORMWATER-DENALI



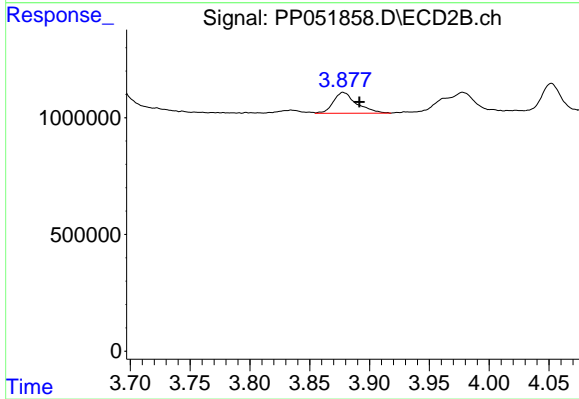
#7 AR-1016-5

R.T.: 0.000 min
 Exp R.T. : 5.236 min
 Response: 0
 Conc: N.D.



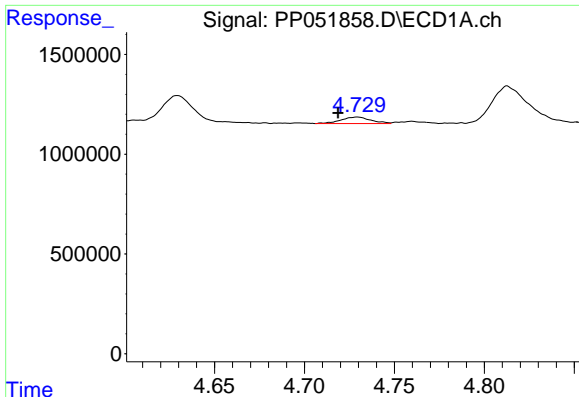
#8 AR-1221-1

R.T.: 4.629 min
 Delta R.T.: -0.002 min
 Response: 1943567
 Conc: 90.16 ng/ml



#8 AR-1221-1

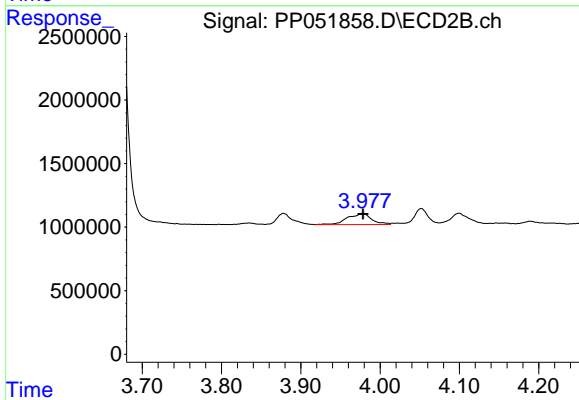
R.T.: 3.878 min
 Delta R.T.: -0.013 min
 Response: 1218376
 Conc: 77.79 ng/ml



#9 AR-1221-2

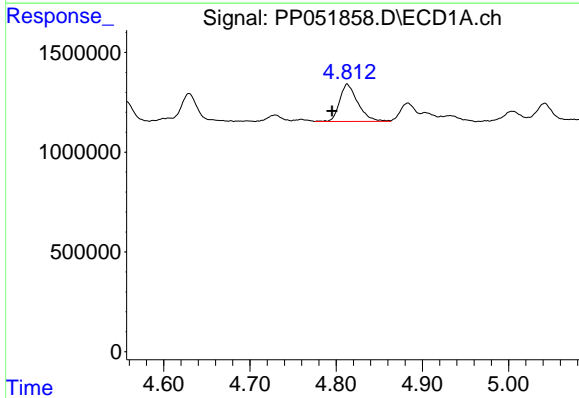
R.T.: 4.729 min
 Delta R.T.: 0.011 min
 Response: 371993
 Conc: 23.34 ng/ml

Instrument :
 ECD_P
 ClientSampleId :
 TOPSOIL-STORMWATER-DENALI



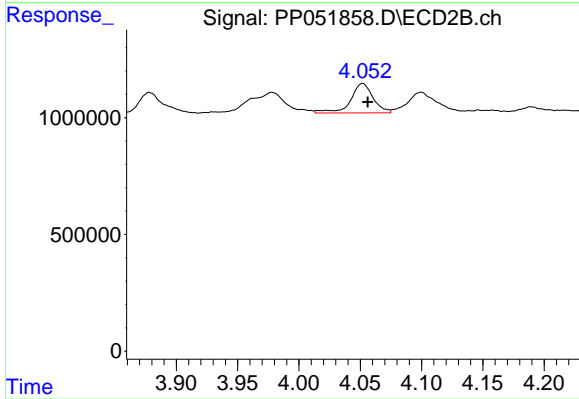
#9 AR-1221-2

R.T.: 3.978 min
 Delta R.T.: 0.000 min
 Response: 1870244
 Conc: 156.54 ng/ml



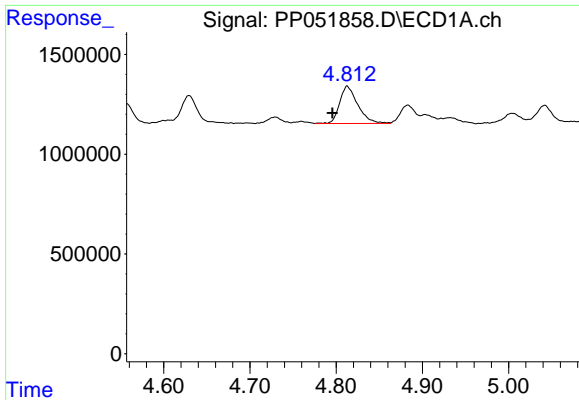
#10 AR-1221-3

R.T.: 4.813 min
 Delta R.T.: 0.018 min
 Response: 2744324
 Conc: 56.67 ng/ml



#10 AR-1221-3

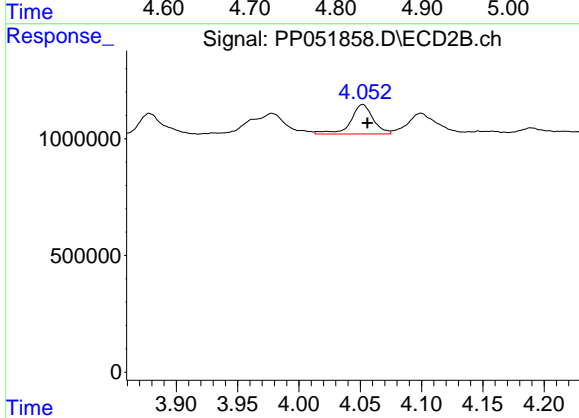
R.T.: 4.052 min
 Delta R.T.: -0.004 min
 Response: 1601479
 Conc: 42.69 ng/ml



#11 AR-1232-1

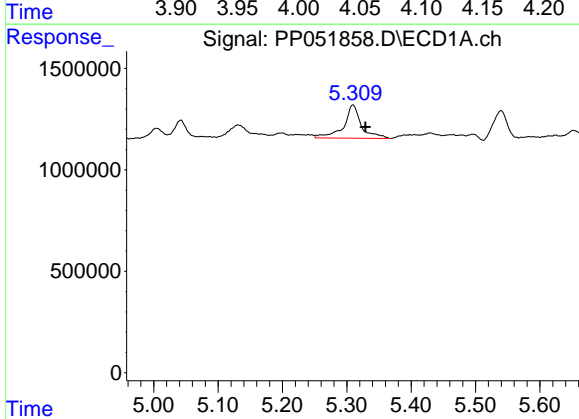
R.T.: 4.813 min
 Delta R.T.: 0.017 min
 Response: 2744324
 Conc: 68.39 ng/ml

Instrument :
 ECD_P
 ClientSampleId :
 TOPSOIL-STORMWATER-DENALI



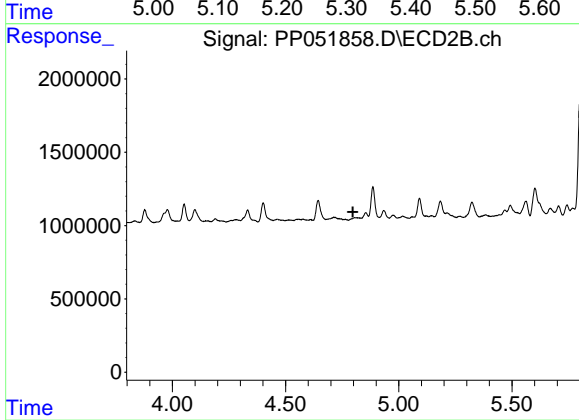
#11 AR-1232-1

R.T.: 4.052 min
 Delta R.T.: -0.004 min
 Response: 1601479
 Conc: 51.45 ng/ml



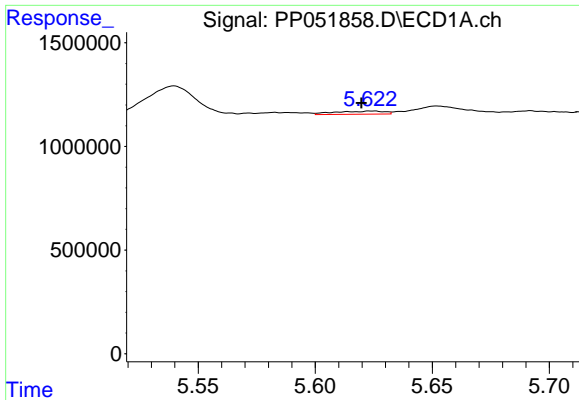
#12 AR-1232-2

R.T.: 5.309 min
 Delta R.T.: -0.019 min
 Response: 3105216
 Conc: 165.47 ng/ml



#12 AR-1232-2

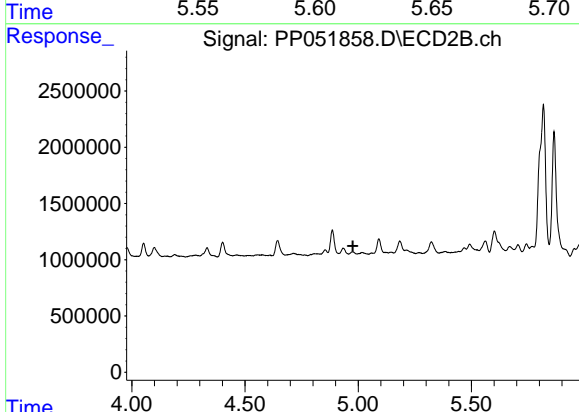
R.T.: 0.000 min
 Exp R.T. : 4.797 min
 Response: 0
 Conc: N.D.



#13 AR-1232-3

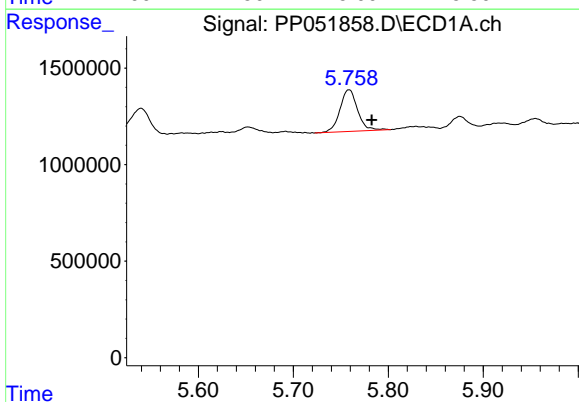
R.T.: 5.624 min
 Delta R.T.: 0.005 min
 Response: 225730
 Conc: 7.60 ng/ml

Instrument :
 ECD_P
ClientSampleId :
 TOPSOIL-STORMWATER-DENALI



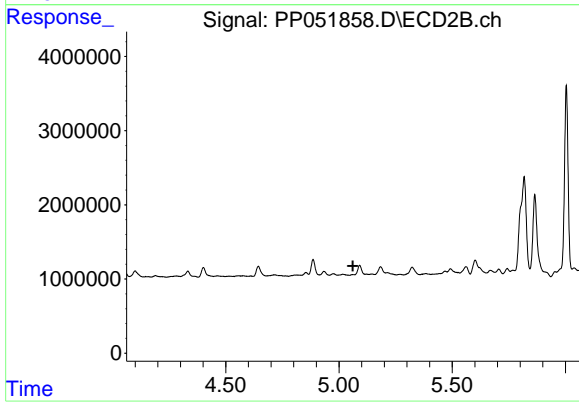
#13 AR-1232-3

R.T.: 4.975 min
 Delta R.T.: -0.001 min
 Response: -256080
 Conc: N.D.



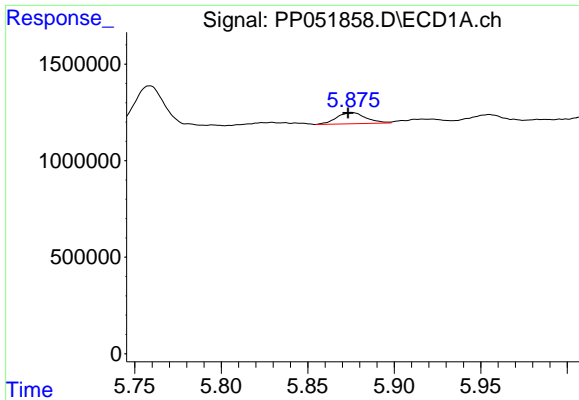
#14 AR-1232-4

R.T.: 5.759 min
 Delta R.T.: -0.024 min
 Response: 2778125
 Conc: 194.08 ng/ml



#14 AR-1232-4

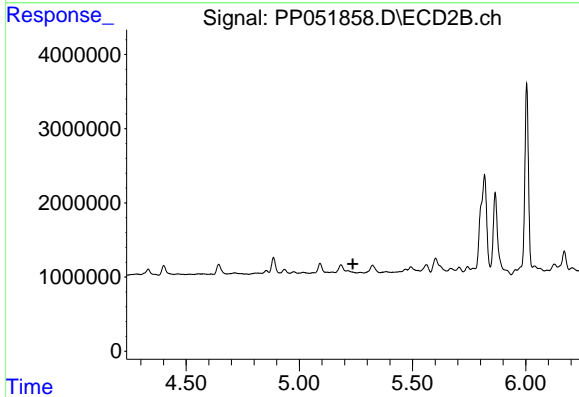
R.T.: 0.000 min
 Exp R.T. : 5.061 min
 Response: 0
 Conc: N.D.



#15 AR-1232-5

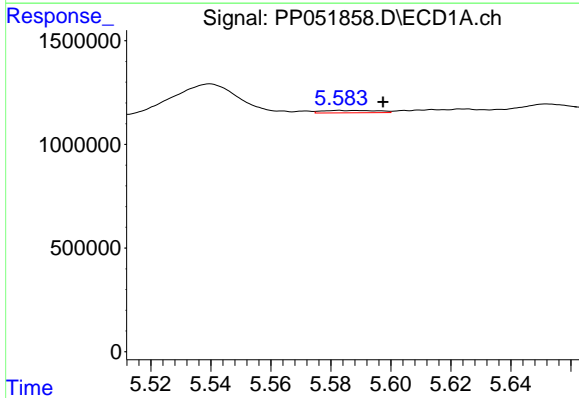
R.T.: 5.876 min
 Delta R.T.: 0.002 min
 Response: 678388
 Conc: 56.70 ng/ml

Instrument :
 ECD_P
 ClientSampleId :
 TOPSOIL-STORMWATER-DENALI



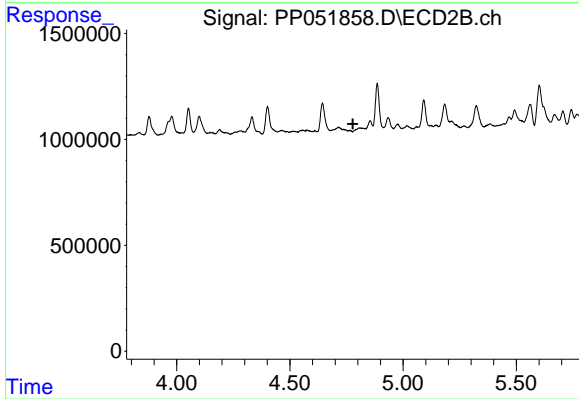
#15 AR-1232-5

R.T.: 0.000 min
 Exp R.T. : 5.236 min
 Response: 0
 Conc: N.D.



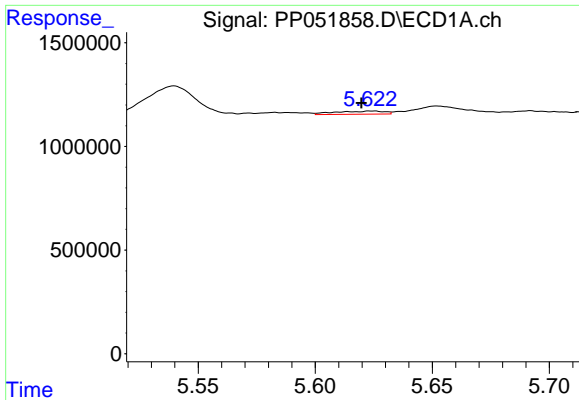
#16 AR-1242-1

R.T.: 5.583 min
 Delta R.T.: -0.015 min
 Response: 150722
 Conc: 3.68 ng/ml



#16 AR-1242-1

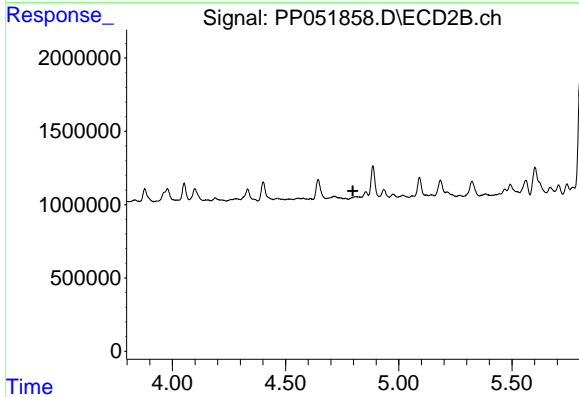
R.T.: 0.000 min
 Exp R.T. : 4.778 min
 Response: 0
 Conc: N.D.



#17 AR-1242-2

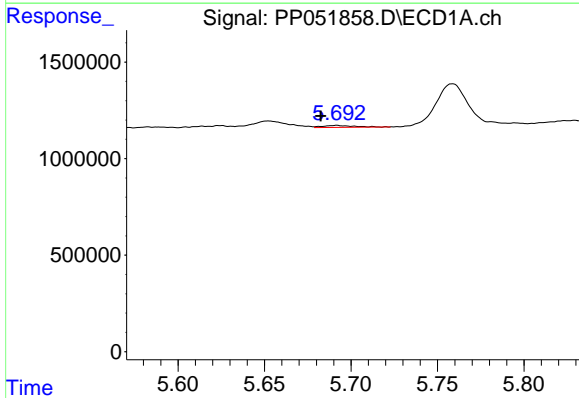
R.T.: 5.624 min
 Delta R.T.: 0.005 min
 Response: 225730
 Conc: 3.93 ng/ml

Instrument : ECD_P
 ClientSampleId : TOPSOIL-STORMWATER-DENALI



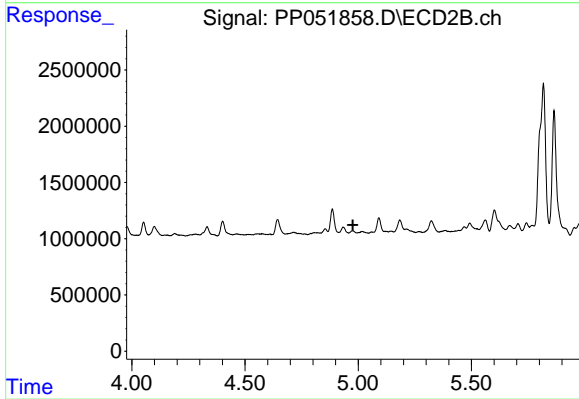
#17 AR-1242-2

R.T.: 0.000 min
 Exp R.T. : 4.798 min
 Response: 0
 Conc: N.D.



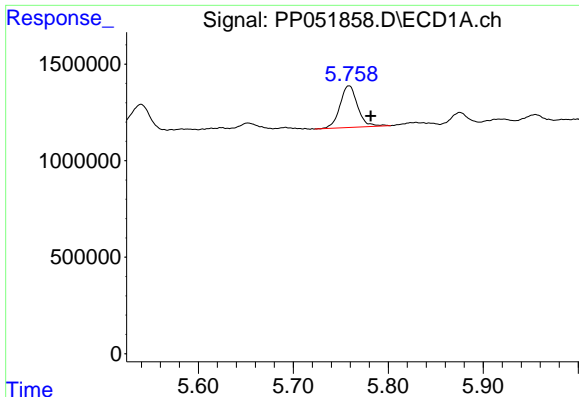
#18 AR-1242-3

R.T.: 5.692 min
 Delta R.T.: 0.009 min
 Response: 126990
 Conc: 3.55 ng/ml



#18 AR-1242-3

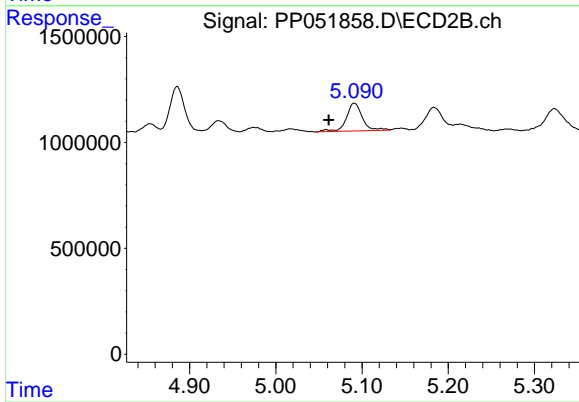
R.T.: 4.975 min
 Delta R.T.: -0.002 min
 Response: -256080
 Conc: N.D.



#19 AR-1242-4

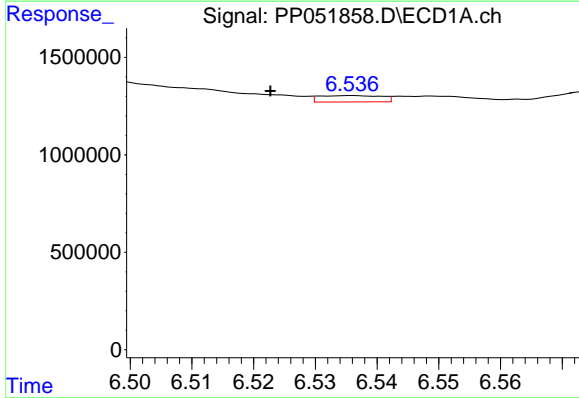
R.T.: 5.759 min
 Delta R.T.: -0.023 min
 Response: 2778125
 Conc: 96.48 ng/ml

Instrument :
 ECD_P
 ClientSampleId :
 TOPSOIL-STORMWATER-DENALI



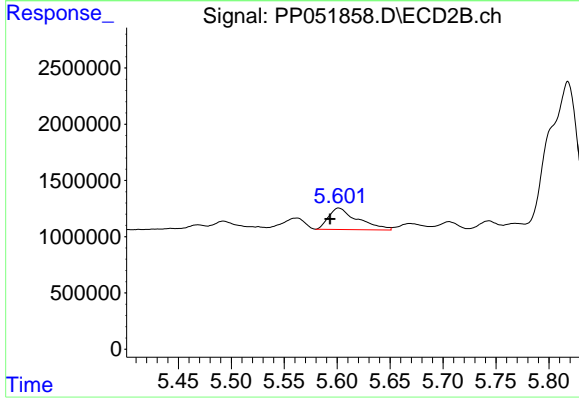
#19 AR-1242-4

R.T.: 5.091 min
 Delta R.T.: 0.030 min
 Response: 1709513
 Conc: 57.96 ng/ml



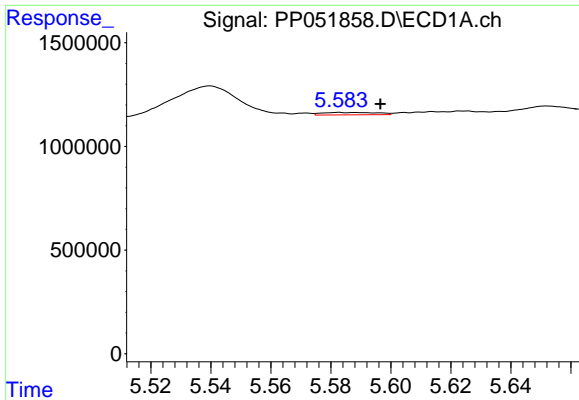
#20 AR-1242-5

R.T.: 6.536 min
 Delta R.T.: 0.013 min
 Response: 229207
 Conc: 6.09 ng/ml



#20 AR-1242-5

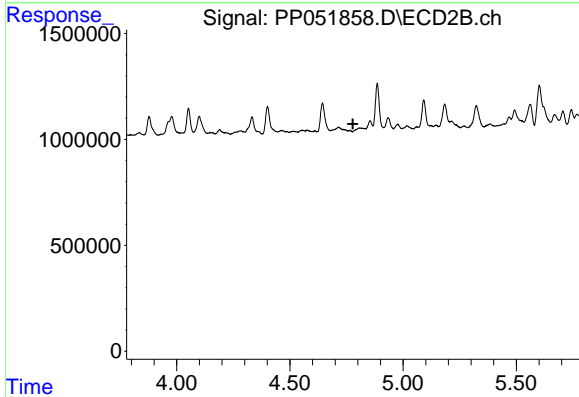
R.T.: 5.602 min
 Delta R.T.: 0.009 min
 Response: 3649265
 Conc: 99.96 ng/ml



#21 AR-1248-1

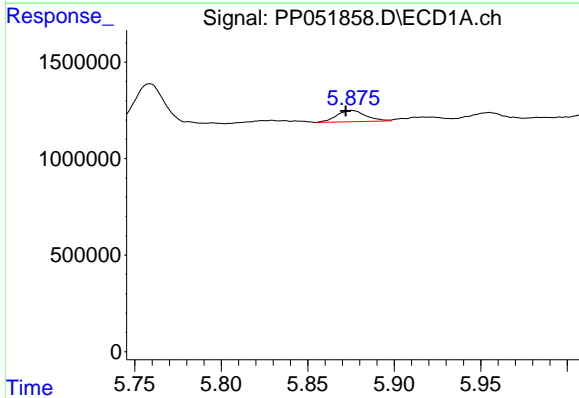
R.T.: 5.583 min
 Delta R.T.: -0.014 min
 Response: 150722
 Conc: 4.98 ng/ml

Instrument :
 ECD_P
 ClientSampleId :
 TOPSOIL-STORMWATER-DENALI



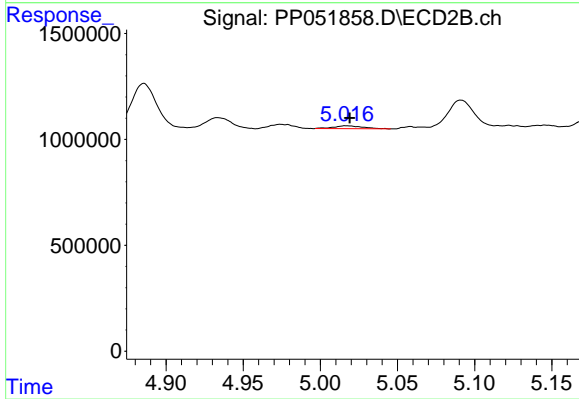
#21 AR-1248-1

R.T.: 0.000 min
 Exp R.T. : 4.778 min
 Response: 0
 Conc: N.D.



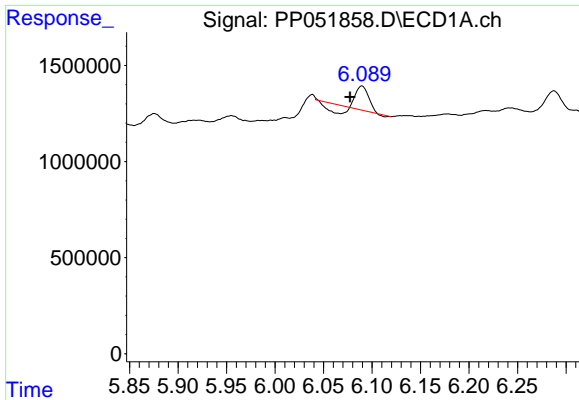
#22 AR-1248-2

R.T.: 5.876 min
 Delta R.T.: 0.004 min
 Response: 678388
 Conc: 14.97 ng/ml



#22 AR-1248-2

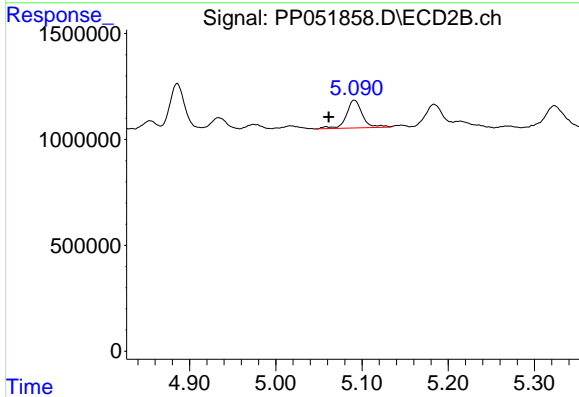
R.T.: 5.017 min
 Delta R.T.: -0.002 min
 Response: 182408
 Conc: 4.53 ng/ml



#23 AR-1248-3

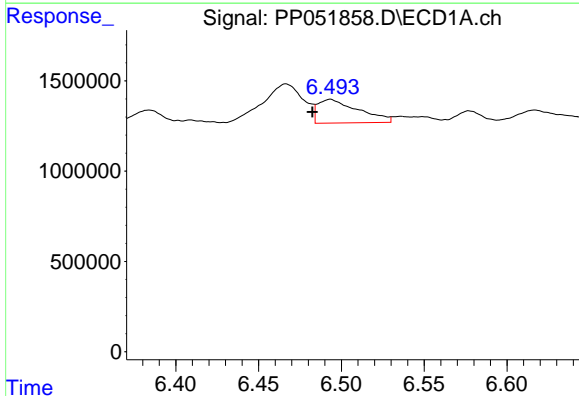
R.T.: 6.090 min
 Delta R.T.: 0.012 min
 Response: 640963
 Conc: 12.62 ng/ml

Instrument :
 ECD_P
 ClientSampleId :
 TOPSOIL-STORMWATER-DENALI



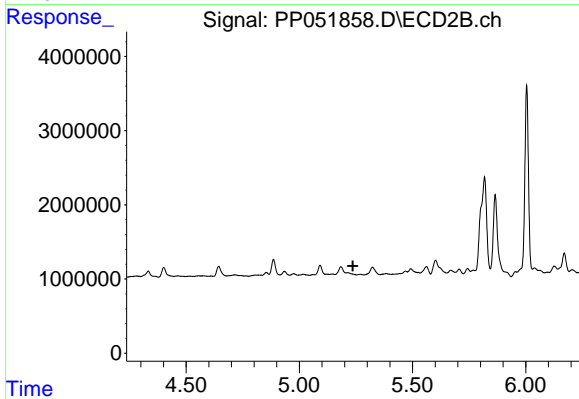
#23 AR-1248-3

R.T.: 5.091 min
 Delta R.T.: 0.030 min
 Response: 1709513
 Conc: 40.28 ng/ml



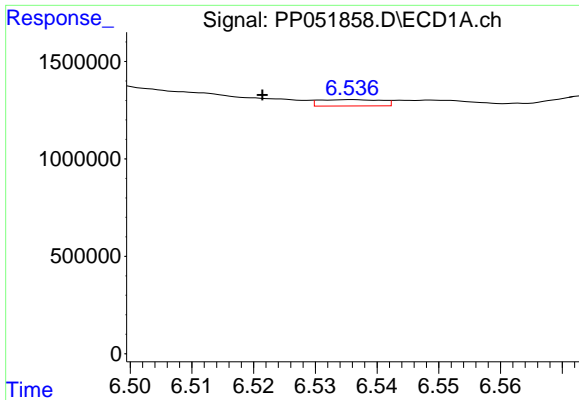
#24 AR-1248-4

R.T.: 6.493 min
 Delta R.T.: 0.011 min
 Response: 2237859
 Conc: 33.49 ng/ml



#24 AR-1248-4

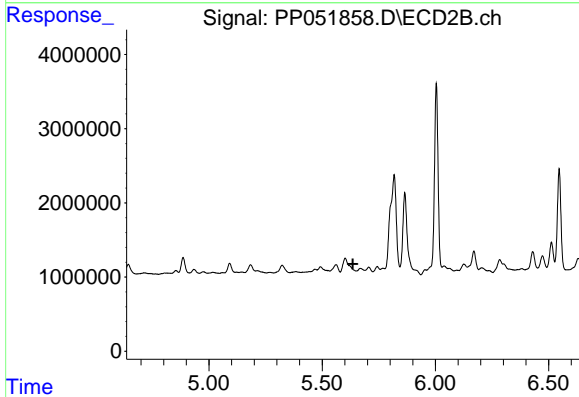
R.T.: 0.000 min
 Exp R.T. : 5.236 min
 Response: 0
 Conc: N.D.



#25 AR-1248-5

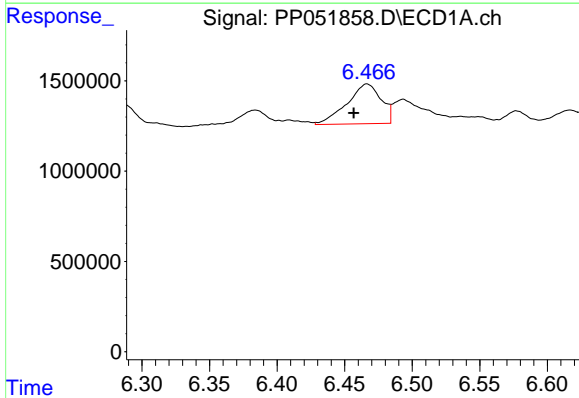
R.T.: 6.536 min
 Delta R.T.: 0.014 min
 Response: 229207
 Conc: 3.49 ng/ml

Instrument : ECD_P
 ClientSampleId : TOPSOIL-STORMWATER-DENALI



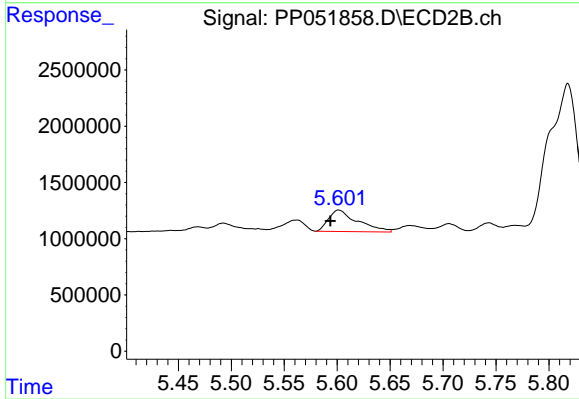
#25 AR-1248-5

R.T.: 0.000 min
 Exp R.T. : 5.636 min
 Response: 0
 Conc: N.D.



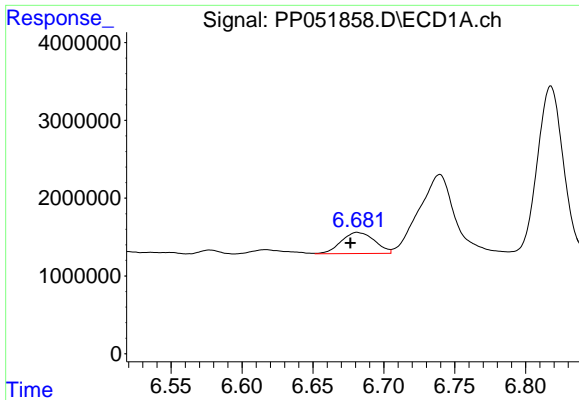
#26 AR-1254-1

R.T.: 6.467 min
 Delta R.T.: 0.010 min
 Response: 3872092
 Conc: 56.75 ng/ml



#26 AR-1254-1

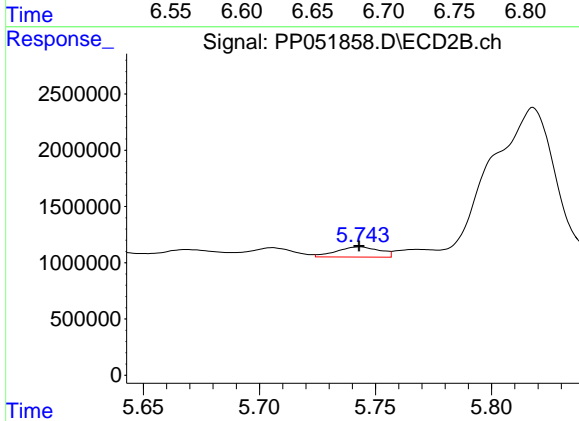
R.T.: 5.602 min
 Delta R.T.: 0.008 min
 Response: 3649265
 Conc: 49.05 ng/ml



#27 AR-1254-2

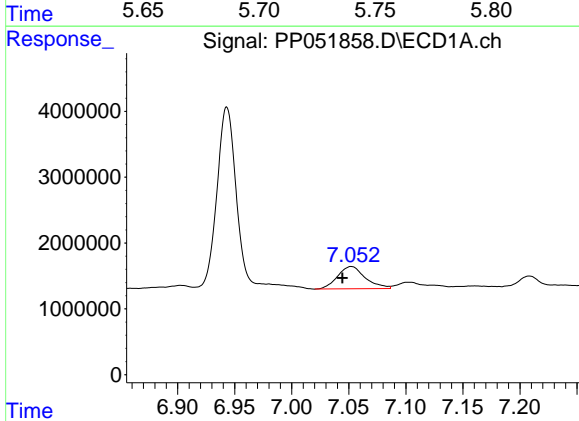
R.T.: 6.681 min
 Delta R.T.: 0.005 min
 Response: 4444953
 Conc: 43.44 ng/ml

Instrument :
 ECD_P
ClientSampleId :
 TOPSOIL-STORMWATER-DENALI



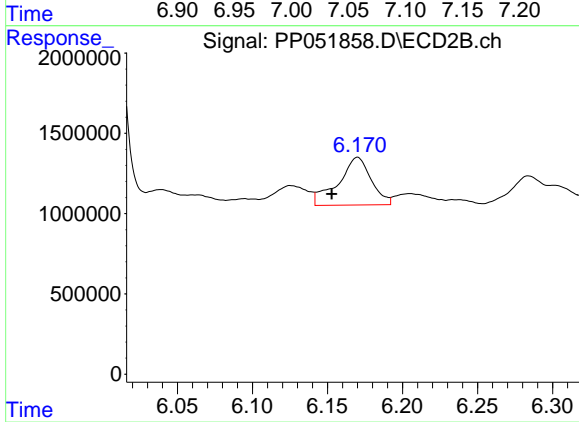
#27 AR-1254-2

R.T.: 5.743 min
 Delta R.T.: 0.000 min
 Response: 1179554
 Conc: 18.29 ng/ml



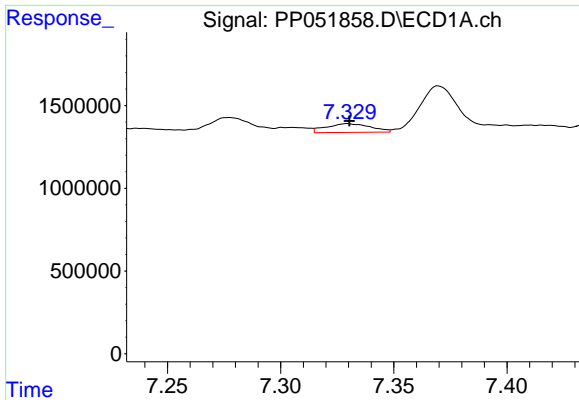
#28 AR-1254-3

R.T.: 7.052 min
 Delta R.T.: 0.008 min
 Response: 5746736
 Conc: 56.13 ng/ml



#28 AR-1254-3

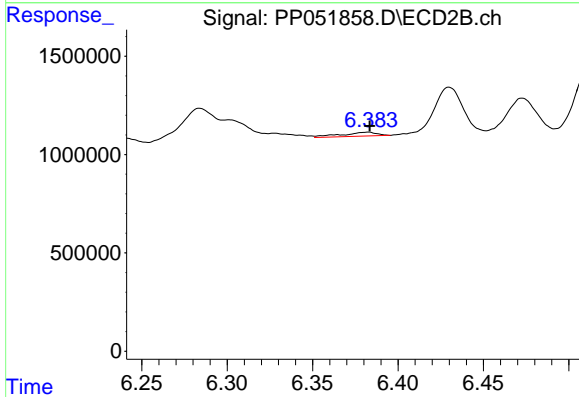
R.T.: 6.170 min
 Delta R.T.: 0.017 min
 Response: 4559637
 Conc: 43.31 ng/ml



#29 AR-1254-4

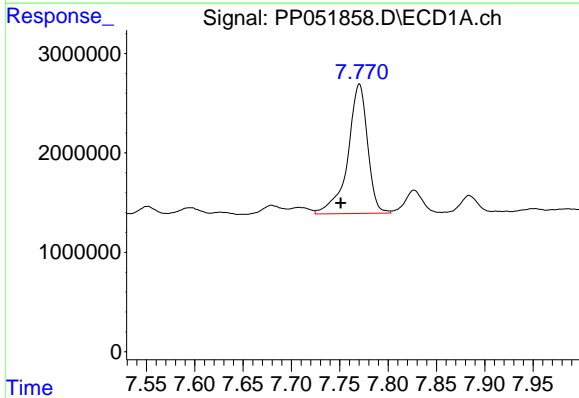
R.T.: 7.330 min
 Delta R.T.: 0.000 min
 Response: 715758
 Conc: 9.98 ng/ml

Instrument :
 ECD_P
ClientSampleId :
 TOPSOIL-STORMWATER-DENALI



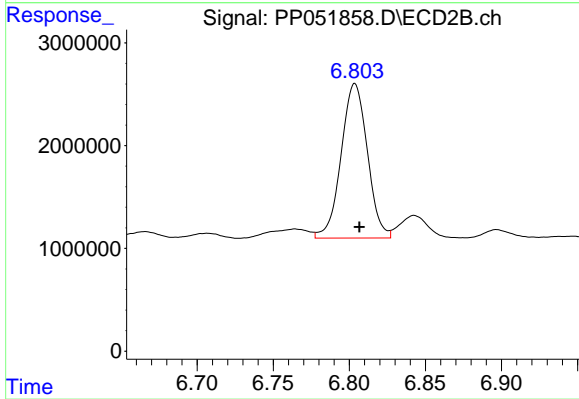
#29 AR-1254-4

R.T.: 6.382 min
 Delta R.T.: -0.002 min
 Response: 289237
 Conc: 4.24 ng/ml



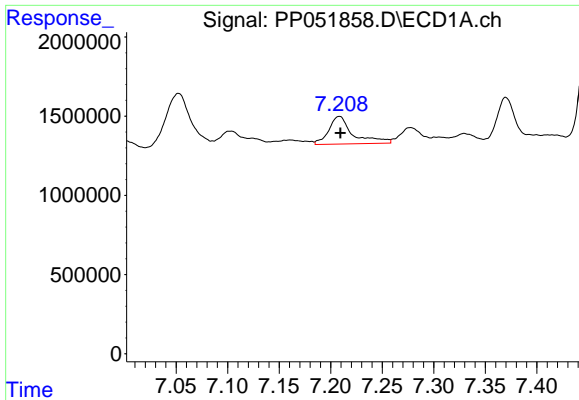
#30 AR-1254-5

R.T.: 7.770 min
 Delta R.T.: 0.019 min
 Response: 18488364
 Conc: 245.75 ng/ml



#30 AR-1254-5

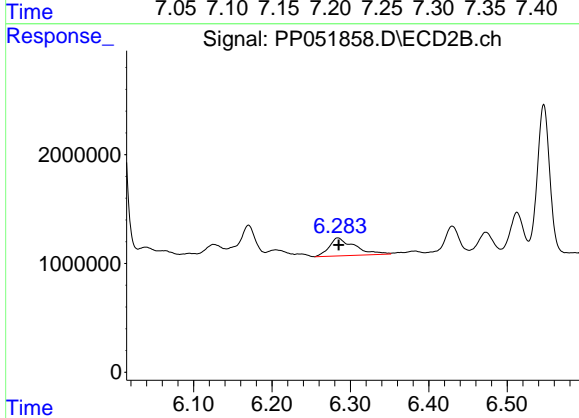
R.T.: 6.804 min
 Delta R.T.: -0.003 min
 Response: 18068972
 Conc: 195.31 ng/ml



#31 AR-1260-1

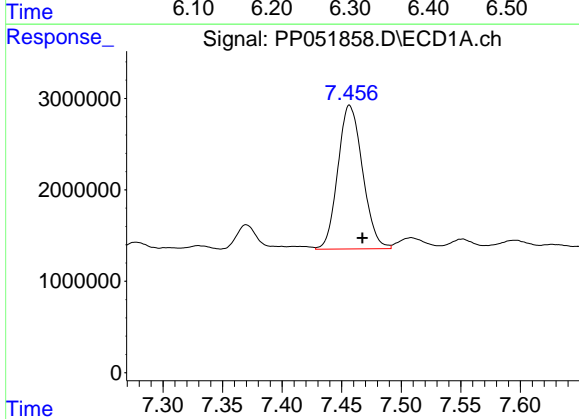
R.T.: 7.208 min
 Delta R.T.: -0.001 min
 Response: 2862845
 Conc: 40.28 ng/ml

Instrument :
 ECD_P
ClientSampleId :
 TOPSOIL-STORMWATER-DENALI



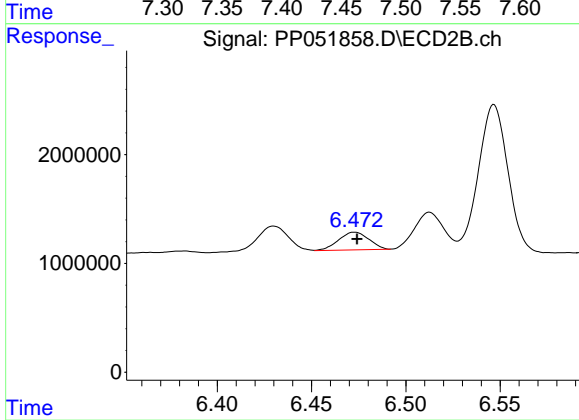
#31 AR-1260-1

R.T.: 6.284 min
 Delta R.T.: 0.000 min
 Response: 3705486
 Conc: 53.80 ng/ml



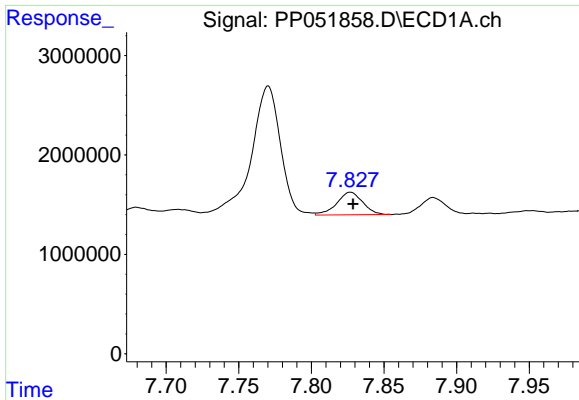
#32 AR-1260-2

R.T.: 7.457 min
 Delta R.T.: -0.011 min
 Response: 22718298
 Conc: 278.15 ng/ml



#32 AR-1260-2

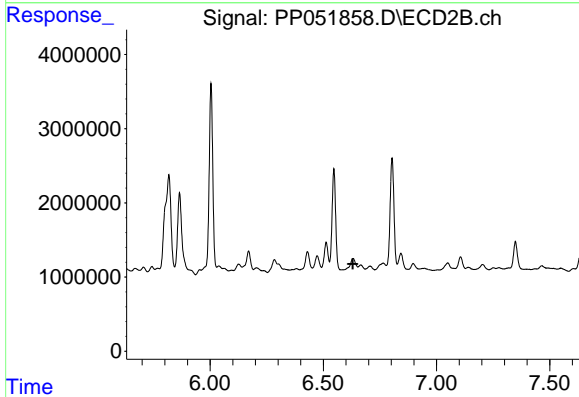
R.T.: 6.473 min
 Delta R.T.: -0.001 min
 Response: 1818490
 Conc: 21.61 ng/ml



#33 AR-1260-3

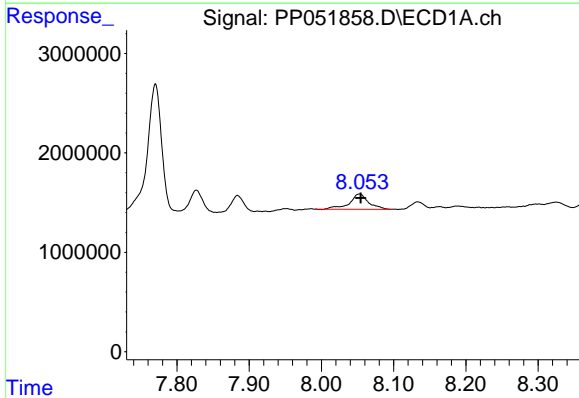
R.T.: 7.827 min
 Delta R.T.: -0.002 min
 Response: 2828823
 Conc: 49.46 ng/ml

Instrument :
 ECD_P
 ClientSampleId :
 TOPSOIL-STORMWATER-DENALI



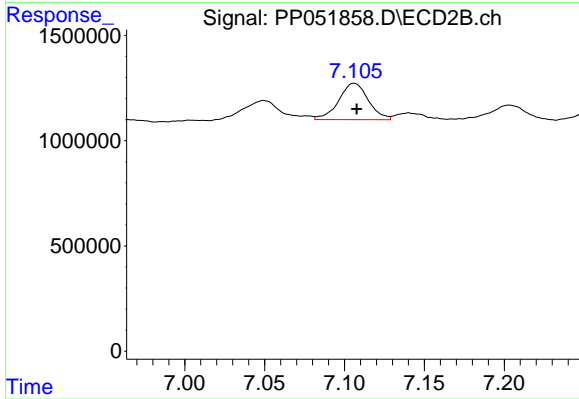
#33 AR-1260-3

R.T.: 6.631 min
 Delta R.T.: 0.000 min
 Response: -863491
 Conc: N.D.



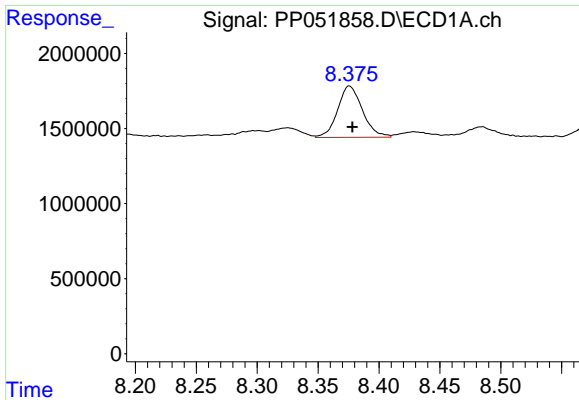
#34 AR-1260-4

R.T.: 8.053 min
 Delta R.T.: -0.002 min
 Response: 2813746
 Conc: 42.96 ng/ml



#34 AR-1260-4

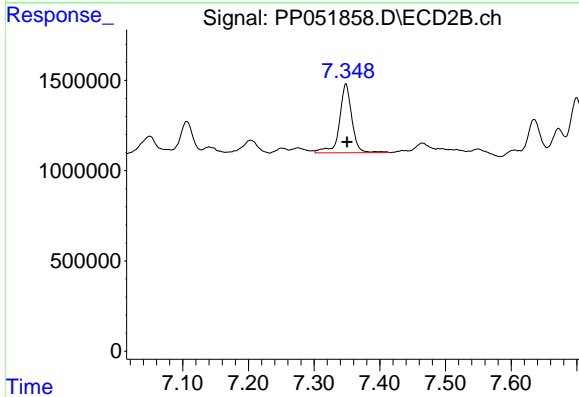
R.T.: 7.106 min
 Delta R.T.: -0.002 min
 Response: 2238029
 Conc: 35.55 ng/ml



#35 AR-1260-5

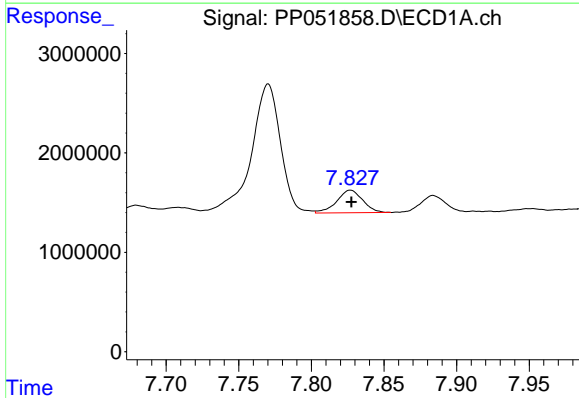
R.T.: 8.376 min
 Delta R.T.: -0.003 min
 Response: 4858485
 Conc: 38.21 ng/ml

Instrument :
 ECD_P
ClientSampleId :
 TOPSOIL-STORMWATER-DENALI



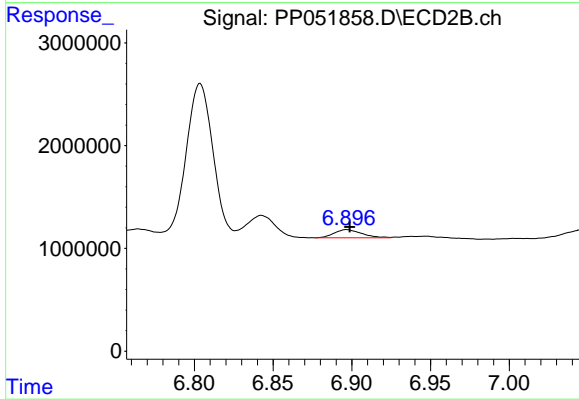
#35 AR-1260-5

R.T.: 7.348 min
 Delta R.T.: -0.002 min
 Response: 5015661
 Conc: 34.20 ng/ml



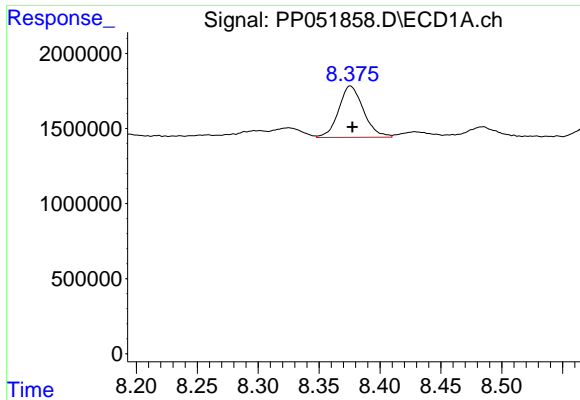
#36 AR-1262-1

R.T.: 7.827 min
 Delta R.T.: 0.000 min
 Response: 2828823
 Conc: 32.53 ng/ml



#36 AR-1262-1

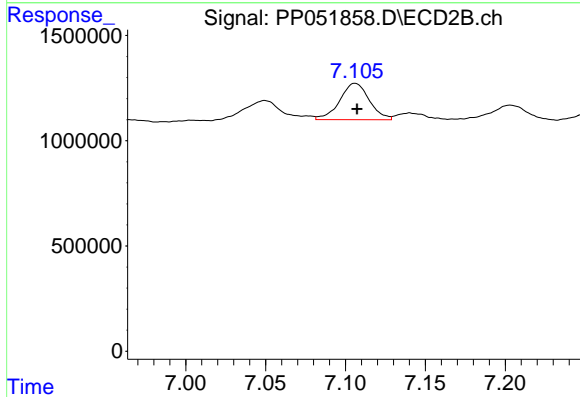
R.T.: 6.897 min
 Delta R.T.: -0.002 min
 Response: 965348
 Conc: 25.69 ng/ml



#37 AR-1262-2

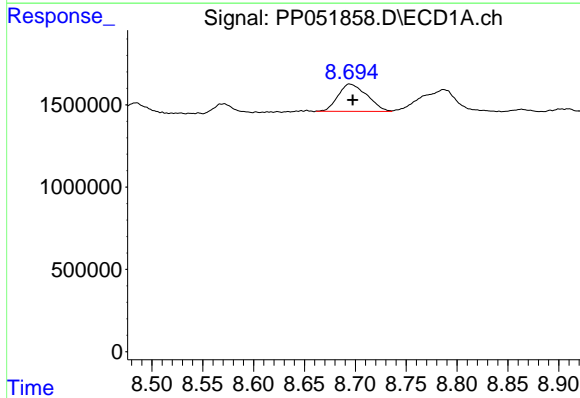
R.T.: 8.376 min
 Delta R.T.: -0.002 min
 Response: 4858485
 Conc: 32.93 ng/ml

Instrument :
 ECD_P
 ClientSampleId :
 TOPSOIL-STORMWATER-DENALI



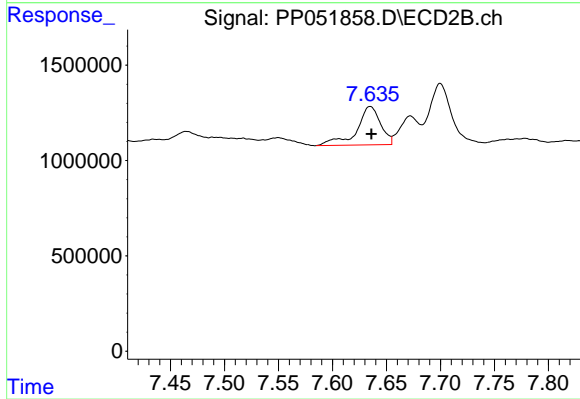
#37 AR-1262-2

R.T.: 7.106 min
 Delta R.T.: -0.001 min
 Response: 2238029
 Conc: 26.42 ng/ml



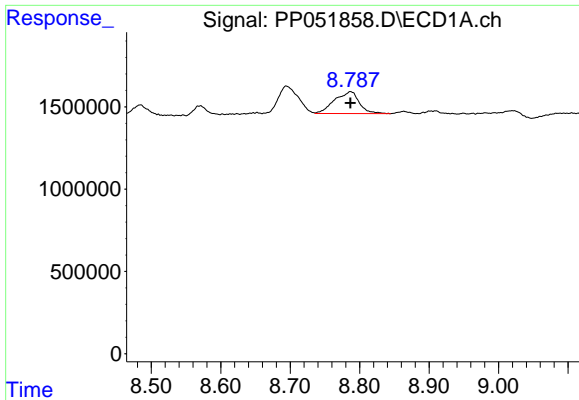
#38 AR-1262-3

R.T.: 8.695 min
 Delta R.T.: -0.003 min
 Response: 3260280
 Conc: 31.67 ng/ml



#38 AR-1262-3

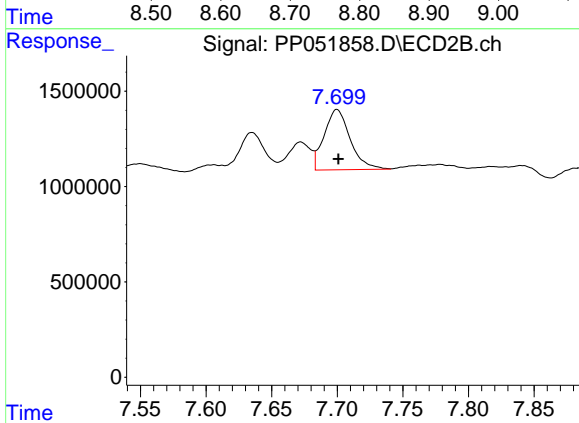
R.T.: 7.635 min
 Delta R.T.: 0.000 min
 Response: 3101792
 Conc: 44.23 ng/ml



#39 AR-1262-4

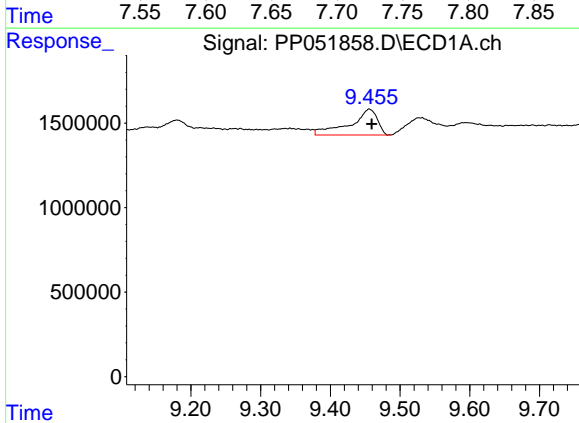
R.T.: 8.787 min
 Delta R.T.: 0.000 min
 Response: 3285631
 Conc: 71.37 ng/ml

Instrument :
 ECD_P
 ClientSampleId :
 TOPSOIL-STORMWATER-DENALI



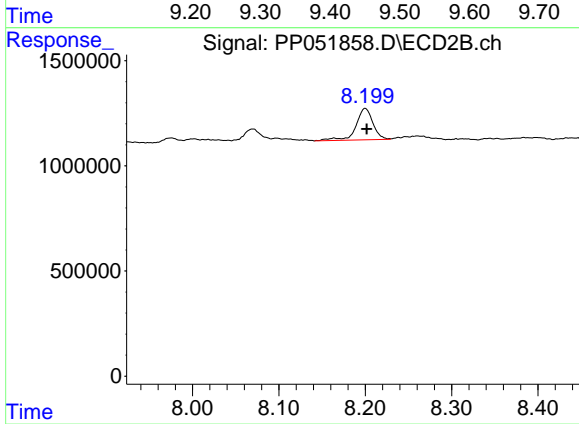
#39 AR-1262-4

R.T.: 7.700 min
 Delta R.T.: 0.000 min
 Response: 4385252
 Conc: 35.10 ng/ml



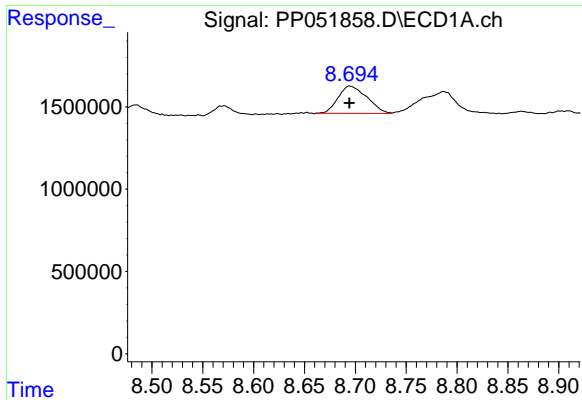
#40 AR-1262-5

R.T.: 9.456 min
 Delta R.T.: -0.003 min
 Response: 4137942
 Conc: 72.62 ng/ml



#40 AR-1262-5

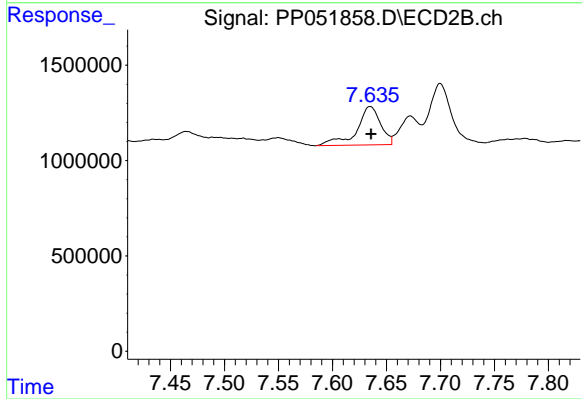
R.T.: 8.200 min
 Delta R.T.: -0.002 min
 Response: 2017730
 Conc: 35.61 ng/ml



#41 AR-1268-1

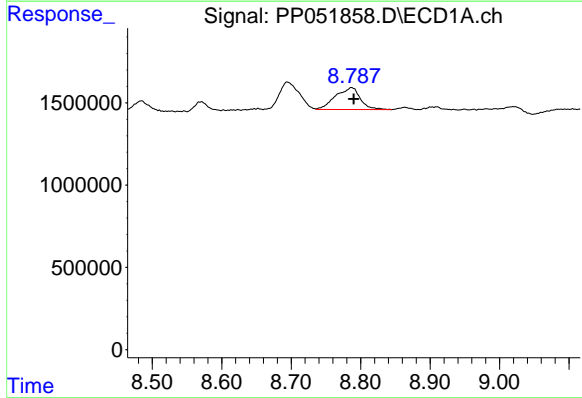
R.T.: 8.695 min
 Delta R.T.: 0.000 min
 Response: 3260280
 Conc: 18.28 ng/ml

Instrument :
 ECD_P
 ClientSampleId :
 TOPSOIL-STORMWATER-DENALI



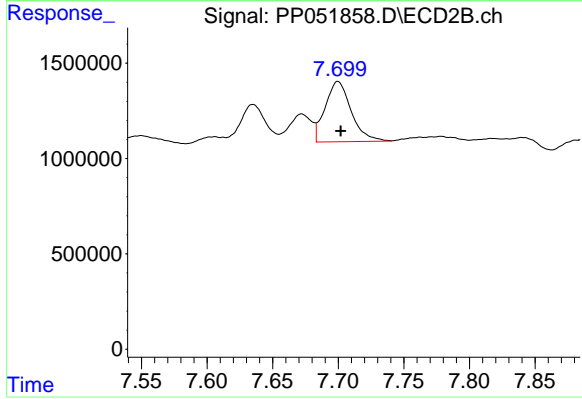
#41 AR-1268-1

R.T.: 7.635 min
 Delta R.T.: 0.000 min
 Response: 3101792
 Conc: 15.63 ng/ml



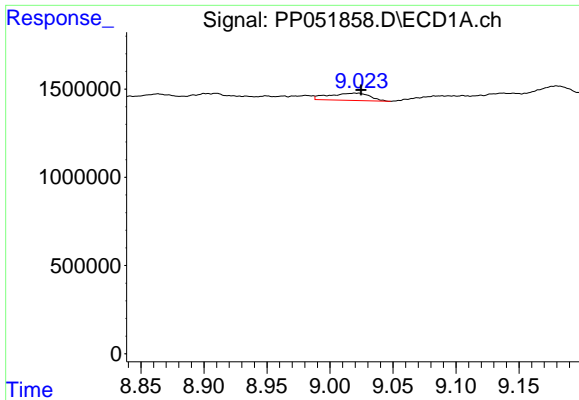
#42 AR-1268-2

R.T.: 8.787 min
 Delta R.T.: -0.003 min
 Response: 3285631
 Conc: 19.82 ng/ml



#42 AR-1268-2

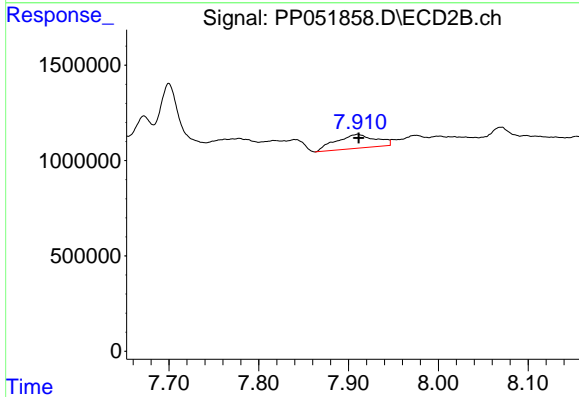
R.T.: 7.700 min
 Delta R.T.: -0.002 min
 Response: 4385252
 Conc: 24.54 ng/ml



#43 AR-1268-3

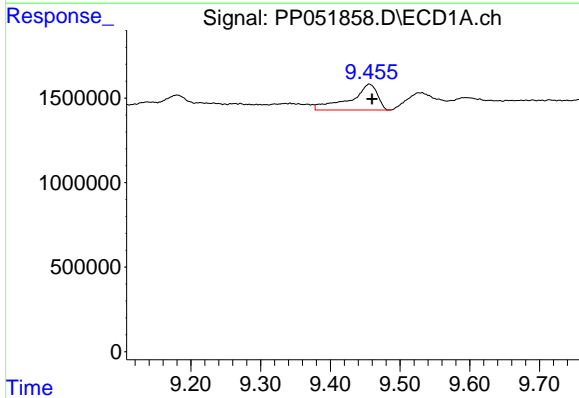
R.T.: 9.021 min
 Delta R.T.: -0.004 min
 Response: 931610
 Conc: 6.50 ng/ml

Instrument :
 ECD_P
 ClientSampleId :
 TOPSOIL-STORMWATER-DENALI



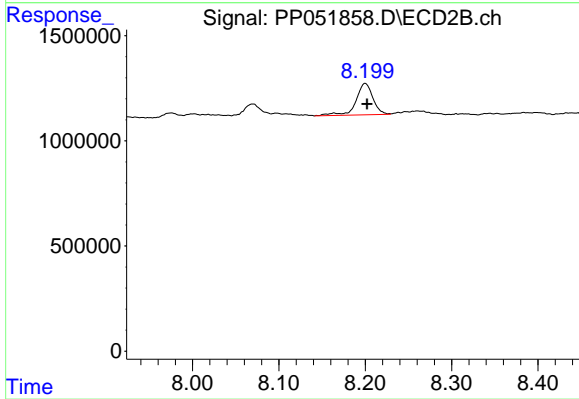
#43 AR-1268-3

R.T.: 7.910 min
 Delta R.T.: -0.001 min
 Response: 2246347
 Conc: 14.68 ng/ml



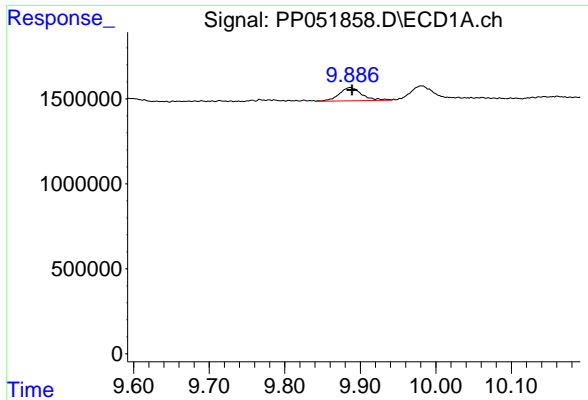
#44 AR-1268-4

R.T.: 9.456 min
 Delta R.T.: -0.004 min
 Response: 4137942
 Conc: 64.60 ng/ml



#44 AR-1268-4

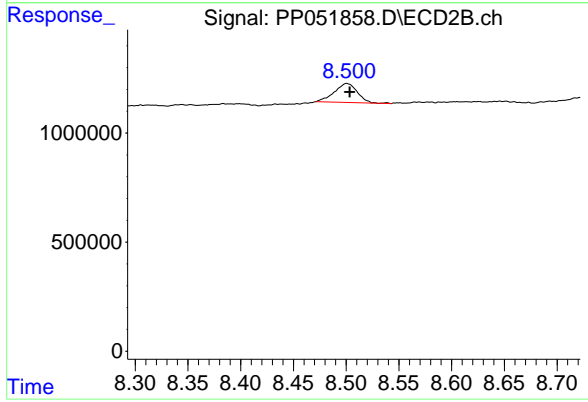
R.T.: 8.200 min
 Delta R.T.: -0.002 min
 Response: 2017730
 Conc: 32.15 ng/ml



#45 AR-1268-5

R.T.: 9.887 min
 Delta R.T.: -0.003 min
 Response: 1612161
 Conc: 3.51 ng/ml

Instrument :
 ECD_P
 ClientSampleId :
 TOPSOIL-STORMWATER-DENALI



#45 AR-1268-5

R.T.: 8.501 min
 Delta R.T.: -0.003 min
 Response: 1318840
 Conc: 2.83 ng/ml