

Data Path : Z:\pestpcbsrv\HPCHEM1\ECD_P\Data\PP100322\
 Data File : PP051873.D
 Signal(s) : Signal #1: ECD1A.ch Signal #2: ECD2B.ch
 Acq On : 04 Oct 2022 05:36
 Operator : YP\AJ
 Sample : N4888-08
 Misc :
 ALS Vial : 46 Sample Multiplier: 1

Instrument :
 ECD_P
ClientSampleId :
 REGULATORY-FOUNDATION-3

Integration File signal 1: autoint1.e
 Integration File signal 2: autoint2.e
 Quant Time: Oct 04 08:46:11 2022
 Quant Method : Z:\pestpcbsrv\HPCHEM1\ECD_P\methods\PP100322.M
 Quant Title : GC EXTRACTABLES
 QLast Update : Tue Oct 04 03:12:26 2022
 Response via : Initial Calibration
 Integrator: ChemStation

Volume Inj. : 2 µl
 Signal #1 Phase : ZB-MR1 Signal #2 Phase: ZB-MR2
 Signal #1 Info : 30Mx0.32mmx 0.50µ Signal #2 Info : 30M x 0.32mm x 0.25µm

Compound	RT#1	RT#2	Resp#1	Resp#2	ng/ml	ng/ml

System Monitoring Compounds						
1) SA Tetrachlo...	4.423	3.674	39903541	28925928	22.326	22.752
2) SA Decachlor...	10.240	8.771	33063743	29665445	27.274	25.116

Target Compounds

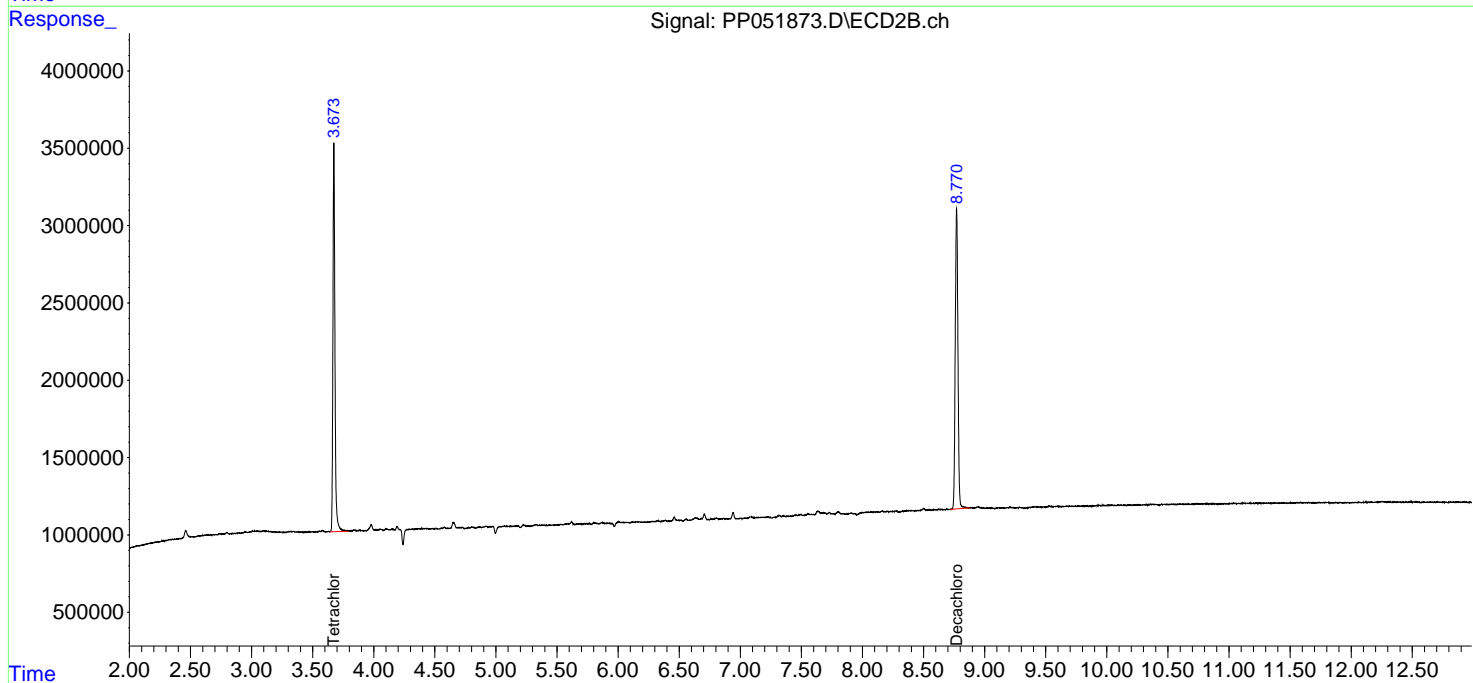
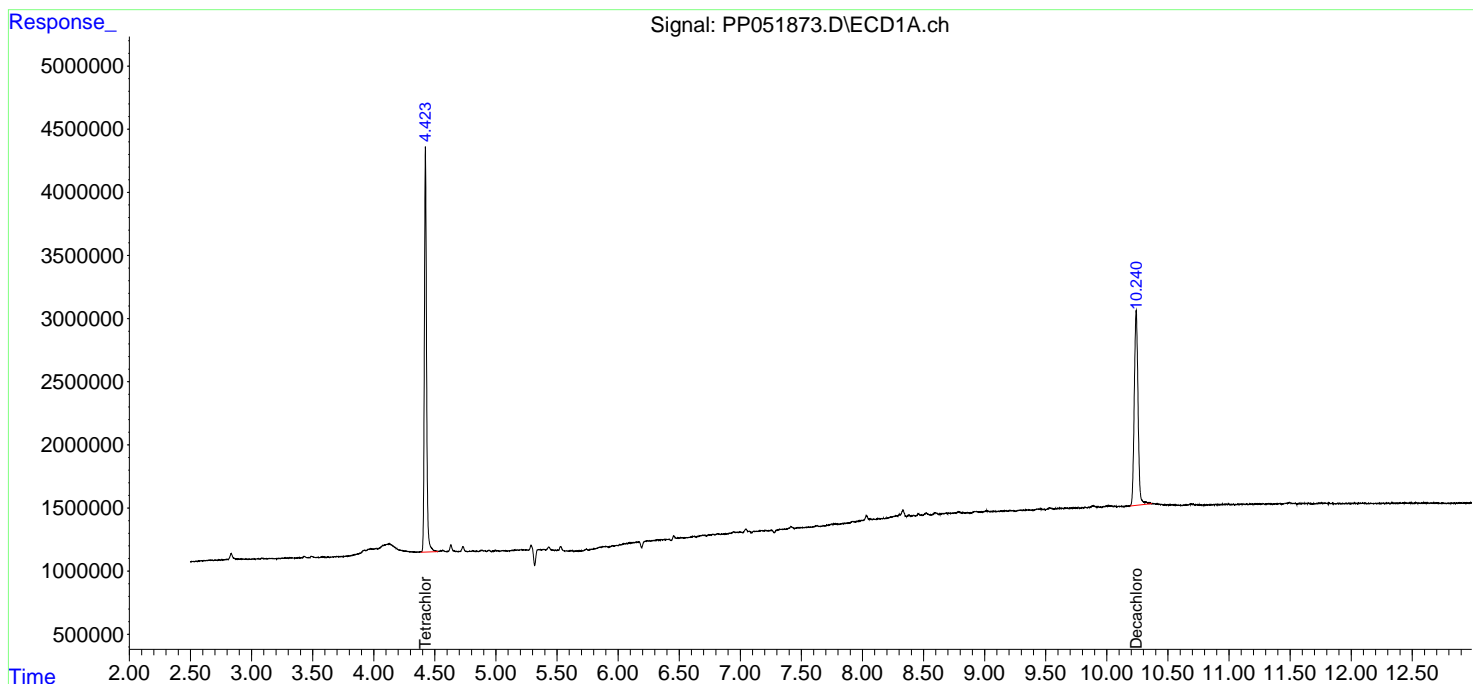
 (f)=RT Delta > 1/2 Window (#)=Amounts differ by > 25% (m)=manual int.

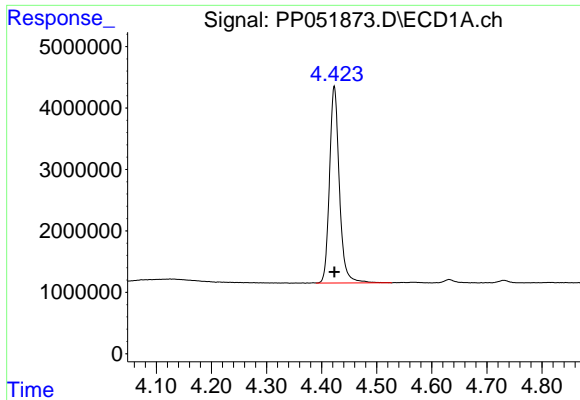
Data Path : Z:\pestpcbsrv\HPCHEM1\ECD_P\Data\PP100322\
 Data File : PP051873.D
 Signal(s) : Signal #1: ECD1A.ch Signal #2: ECD2B.ch
 Acq On : 04 Oct 2022 05:36
 Operator : YP\AJ
 Sample : N4888-08
 Misc :
 ALS Vial : 46 Sample Multiplier: 1

Instrument :
 ECD_P
ClientSampleId :
 REGULATORY-FOUNDATION-3

Integration File signal 1: autoint1.e
 Integration File signal 2: autoint2.e
 Quant Time: Oct 04 08:46:11 2022
 Quant Method : Z:\pestpcbsrv\HPCHEM1\ECD_P\methods\PP100322.M
 Quant Title : GC EXTRACTABLES
 QLast Update : Tue Oct 04 03:12:26 2022
 Response via : Initial Calibration
 Integrator: ChemStation

Volume Inj. : 2 µl
 Signal #1 Phase : ZB-MR1 Signal #2 Phase: ZB-MR2
 Signal #1 Info : 30Mx0.32mmx 0.50µ Signal #2 Info : 30M x 0.32mm x 0.25µm

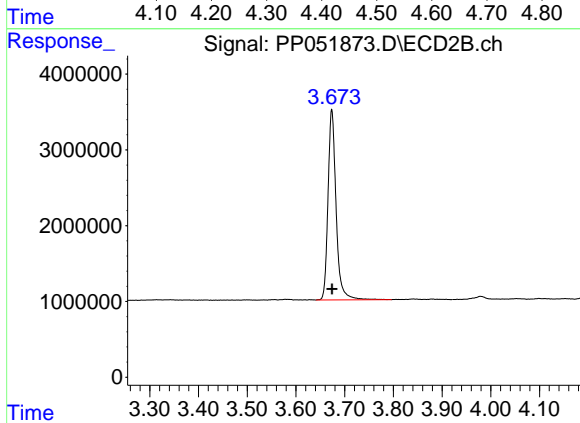




#1 Tetrachloro-m-xylene

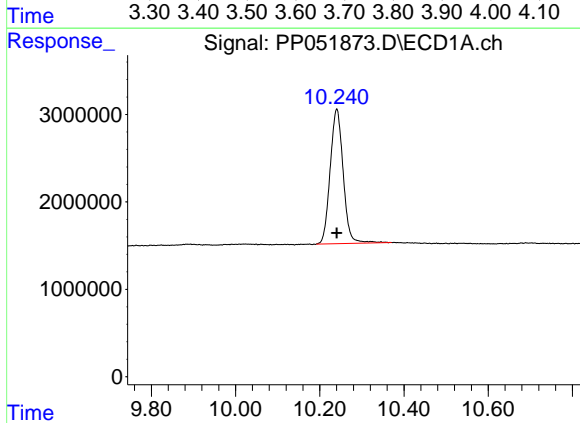
R.T.: 4.423 min
 Delta R.T.: 0.000 min
 Response: 39903541
 Conc: 22.33 ng/ml

Instrument :
 ECD_P
 ClientSampleId :
 REGULATORY-FOUNDATION-3



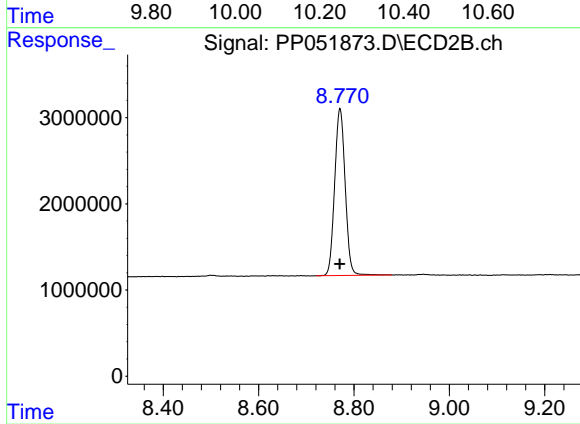
#1 Tetrachloro-m-xylene

R.T.: 3.674 min
 Delta R.T.: 0.000 min
 Response: 28925928
 Conc: 22.75 ng/ml



#2 Decachlorobiphenyl

R.T.: 10.240 min
 Delta R.T.: 0.000 min
 Response: 33063743
 Conc: 27.27 ng/ml



#2 Decachlorobiphenyl

R.T.: 8.771 min
 Delta R.T.: 0.000 min
 Response: 29665445
 Conc: 25.12 ng/ml