

Data Path : Z:\pestpcbsrv\HPCHEM1\ECD_P\Data\PP100521\
 Data File : PP039812.D
 Signal(s) : Signal #1: ECD1A.CH Signal #2: ECD2B.CH
 Acq On : 05 Oct 2021 12:16
 Operator : AJ\MA
 Sample : AR1254CCC500
 Misc :
 ALS Vial : 6 Sample Multiplier: 1

Instrument :
 ECD_P
 ClientSampled :

Integration File signal 1: autoint1.e
 Integration File signal 2: autoint2.e
 Quant Time: Oct 05 14:11:53 2021
 Quant Method : Z:\pestpcbsrv\HPCHEM1\ECD_P\methods\PP092421.M
 Quant Title : GC EXTRACTABLES
 QLast Update : Sat Sep 25 01:28:12 2021
 Response via : Initial Calibration
 Integrator: ChemStation 6890 Scale Mode: Small noise peaks clipped

Volume Inj. : 2 µl
 Signal #1 Phase : ZB-MR1 Signal #2 Phase: ZB-MR2
 Signal #1 Info : 30Mx0.32mmx 0.50µ Signal #2 Info : 30M x 0.32mm x 0.25µm

Compound	RT#1	RT#2	Resp#1	Resp#2	ng/ml	ng/ml
System Monitoring Compounds						
1) SA Tetrachlo...	4.914	3.994	1608101	904132	50.797	55.488
2) SA Decachlor...	10.938	9.326	1213786	1155346	55.951	52.871
Target Compounds						
3) L1 AR-1016-1	0.000	5.257	0	4004	N.D.	5.556 #
4) L1 AR-1016-2	0.000	5.257f	0	4004	N.D.	4.058 #
6) L1 AR-1016-4	0.000	5.523	0	208278	N.D.	470.059 #
7) L1 AR-1016-5	6.748	5.752	166822	81433	225.389	147.300 #
9) L2 AR-1221-2	0.000	4.349	0	11792	N.D.	69.199 #
10) L2 AR-1221-3	0.000	4.433	0	10900	N.D.	20.160 #
11) L3 AR-1232-1	0.000	4.433	0	10900	N.D.	26.954 #
12) L3 AR-1232-2	0.000	5.257f	0	4004	N.D.	9.588 #
14) L3 AR-1232-4	0.000	5.567	0	55984	N.D.	238.532 #
15) L3 AR-1232-5	6.530	5.752	296152	81433	1284.984	372.776 #
16) L4 AR-1242-1	0.000	5.257	0	4004	N.D.	7.465 #
17) L4 AR-1242-2	0.000	5.257f	0	4004	N.D.	5.467 #
19) L4 AR-1242-4	0.000	5.567	0	55984	N.D.	132.524 #
20) L4 AR-1242-5	7.219	6.135	181930	518956	292.927	977.960 #
21) L5 AR-1248-1	0.000	5.257	0	4004	N.D.	9.220 #
22) L5 AR-1248-2	6.530	5.523	296152	208278	358.899	351.467
23) L5 AR-1248-3	6.748	5.567	166822	55984	169.608	92.394 #
24) L5 AR-1248-4	7.177	5.752	297248	81433	273.817	119.590 #
25) L5 AR-1248-5	7.219	6.178	181930	61842	174.346	87.735 #
26) L6 AR-1254-1	7.146	6.135	616693	518956	564.990	498.455
27) L6 AR-1254-2	7.376	6.294	842795	468685	521.770	486.336
28) L6 AR-1254-3	7.758	6.718	932283	738208	560.313	490.716
29) L6 AR-1254-4	8.054	6.957	664984	466128	544.384	484.069
30) L6 AR-1254-5	8.483	7.389	647522	715527	510.342	508.355
31) L7 AR-1260-1	7.925	6.856	416099	388719	338.602	360.957
32) L7 AR-1260-2	8.191	7.052	426149	337768	307.815	263.717
33) L7 AR-1260-3	8.546	7.208	84716	331557	102.423	275.599 #
34) L7 AR-1260-4	8.780	7.694	249285	38413	250.043	41.245 #
35) L7 AR-1260-5	9.113	7.941	66569	86778	35.129	40.457
36) L8 AR-1262-1	8.546	7.389	84716	715527	63.444	1014.952 #
37) L8 AR-1262-2	9.113	7.941	66569	86778	30.265	38.199 #
38) L8 AR-1262-3	9.447f	0.000	64971	0	66.555	N.D. #
39) L8 AR-1262-4	0.000	8.291	0	89502	N.D.	49.829 #
40) L8 AR-1262-5	0.000	8.798	0	14537	N.D.	15.966 #
41) L9 AR-1268-1	9.447f	0.000	64971	0	24.127	N.D. #
42) L9 AR-1268-2	0.000	8.291	0	89502	N.D.	33.575 #
44) L9 AR-1268-4	0.000	8.798	0	14537	N.D.	14.123 #

Data Path : Z:\pestpcbsrv\HPCHEM1\ECD_P\Data\PP100521\
Data File : PP039812.D
Signal(s) : Signal #1: ECD1A.CH Signal #2: ECD2B.CH
Acq On : 05 Oct 2021 12:16
Operator : AJ\MA
Sample : AR1254CCC500
Misc :
ALS Vial : 6 Sample Multiplier: 1

Instrument :
ECD_P
ClientSampleId :

Integration File signal 1: autoint1.e
Integration File signal 2: autoint2.e
Quant Time: Oct 05 14:11:53 2021
Quant Method : Z:\pestpcbsrv\HPCHEM1\ECD_P\methods\PP092421.M
Quant Title : GC EXTRACTABLES
QLast Update : Sat Sep 25 01:28:12 2021
Response via : Initial Calibration
Integrator: ChemStation 6890 Scale Mode: Small noise peaks clipped

Volume Inj. : 2 µl
Signal #1 Phase : ZB-MR1 Signal #2 Phase: ZB-MR2
Signal #1 Info : 30Mx0.32mmx 0.50µ Signal #2 Info : 30M x 0.32mm x 0.25µm

Compound	RT#1	RT#2	Resp#1	Resp#2	ng/ml	ng/ml
----------	------	------	--------	--------	-------	-------

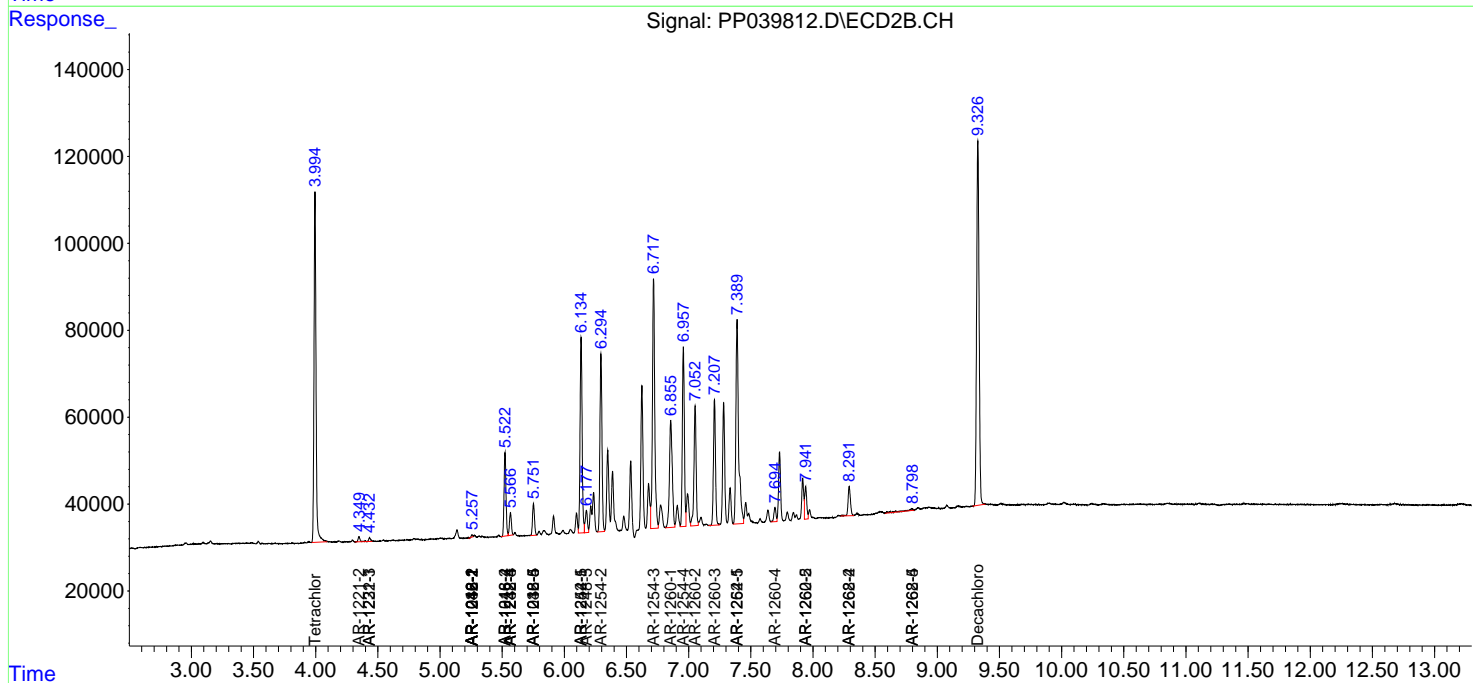
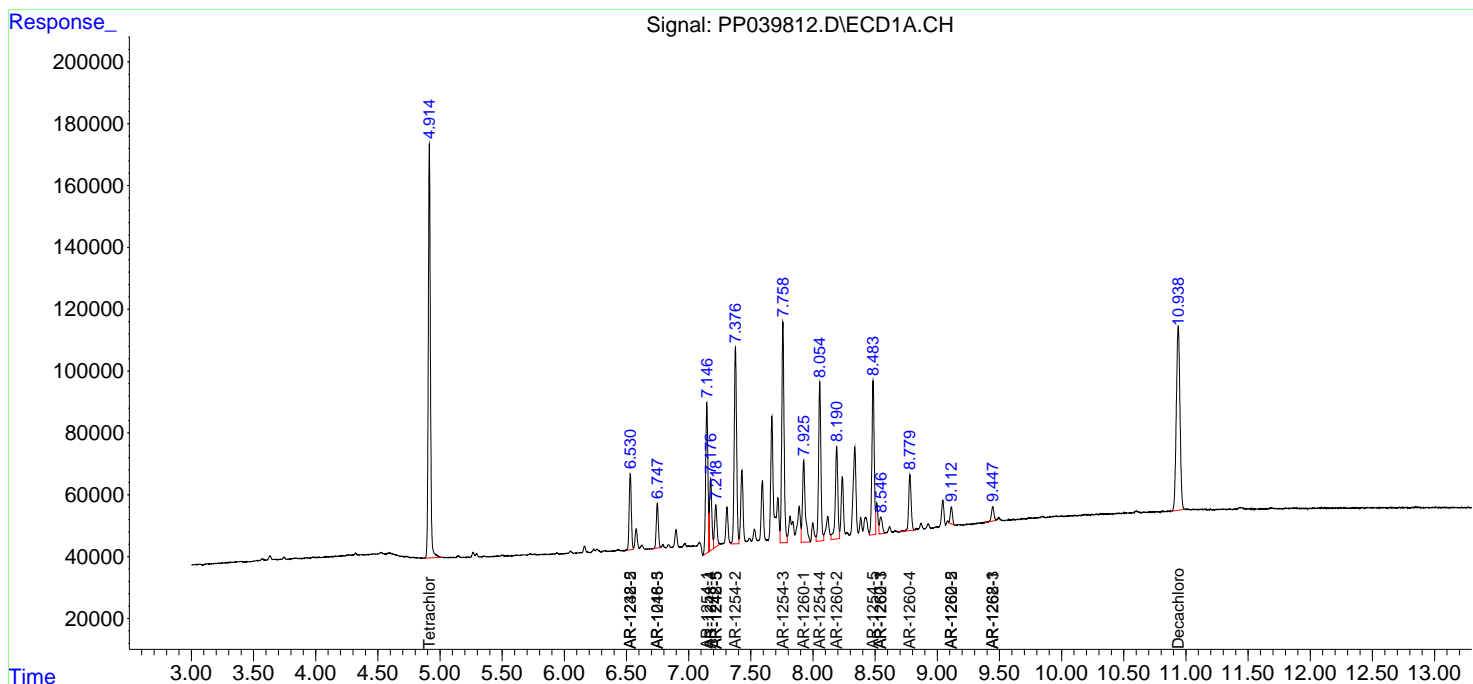
(f)=RT Delta > 1/2 Window (#)=Amounts differ by > 25% (m)=manual int.

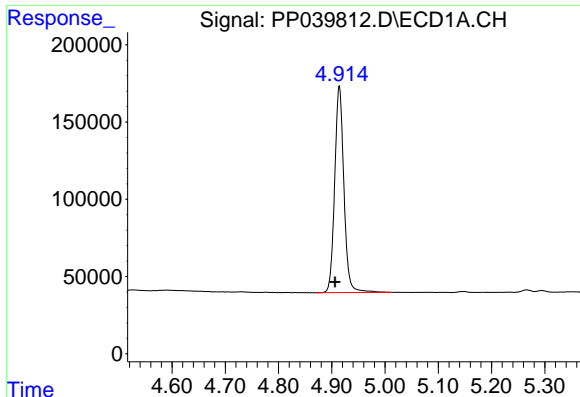
Data Path : Z:\pestpcbsrv\HPCHEM1\ECD_P\Data\PP100521\
 Data File : PP039812.D
 Signal(s) : Signal #1: ECD1A.CH Signal #2: ECD2B.CH
 Acq On : 05 Oct 2021 12:16
 Operator : AJ\MA
 Sample : AR1254CCC500
 Misc :
 ALS Vial : 6 Sample Multiplier: 1

Instrument :
 ECD_P
 ClientSampled :

Integration File signal 1: autoint1.e
 Integration File signal 2: autoint2.e
 Quant Time: Oct 05 14:11:53 2021
 Quant Method : Z:\pestpcbsrv\HPCHEM1\ECD_P\methods\PP092421.M
 Quant Title : GC EXTRACTABLES
 QLast Update : Sat Sep 25 01:28:12 2021
 Response via : Initial Calibration
 Integrator: ChemStation 6890 Scale Mode: Small noise peaks clipped

Volume Inj. : 2 µl
 Signal #1 Phase : ZB-MR1 Signal #2 Phase: ZB-MR2
 Signal #1 Info : 30Mx0.32mmx 0.50µ Signal #2 Info : 30M x 0.32mm x 0.25µm

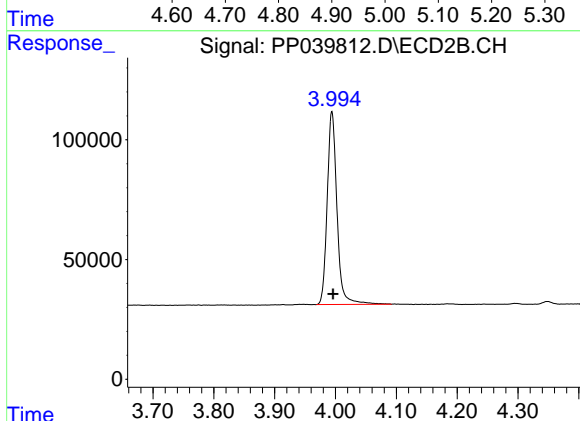




#1 Tetrachloro-m-xylene

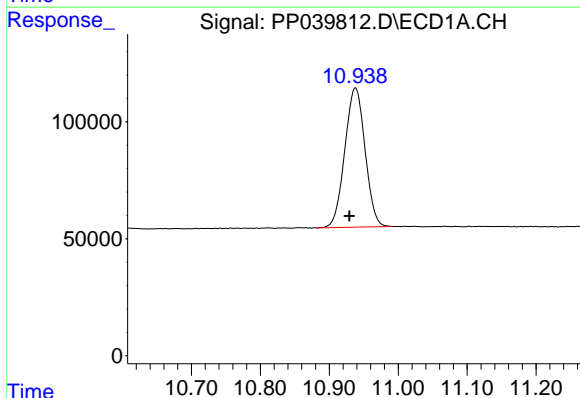
R.T.: 4.914 min
 Delta R.T.: 0.008 min
 Response: 1608101
 Conc: 50.80 ng/ml

Instrument :
 ECD_P
 ClientSampleId :



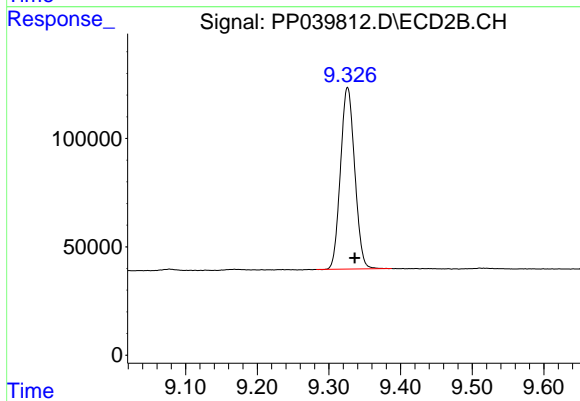
#1 Tetrachloro-m-xylene

R.T.: 3.994 min
 Delta R.T.: -0.002 min
 Response: 904132
 Conc: 55.49 ng/ml



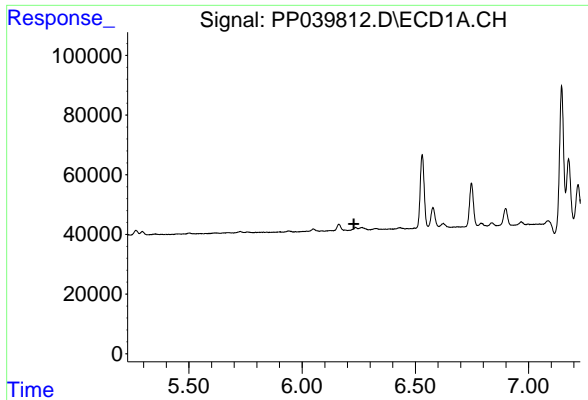
#2 Decachlorobiphenyl

R.T.: 10.938 min
 Delta R.T.: 0.008 min
 Response: 1213786
 Conc: 55.95 ng/ml



#2 Decachlorobiphenyl

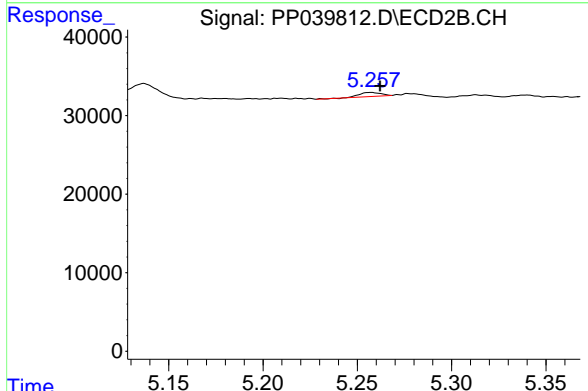
R.T.: 9.326 min
 Delta R.T.: -0.010 min
 Response: 1155346
 Conc: 52.87 ng/ml



#3 AR-1016-1

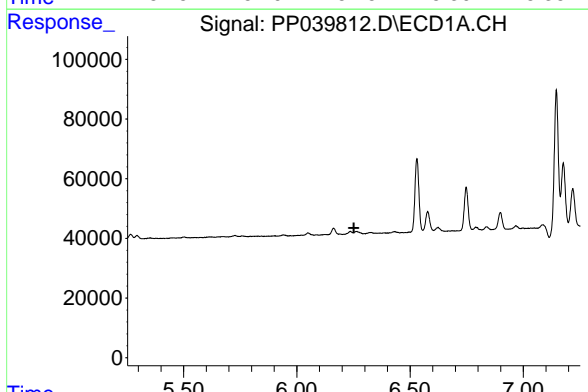
R.T.: 0.000 min
 Exp R.T.: 6.229 min
 Response: 0
 Conc: N.D.

Instrument :
 ECD_P
 ClientSampled :



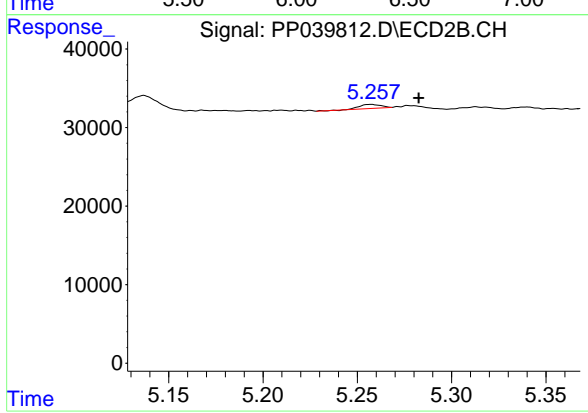
#3 AR-1016-1

R.T.: 5.257 min
 Delta R.T.: -0.005 min
 Response: 4004
 Conc: 5.56 ng/ml



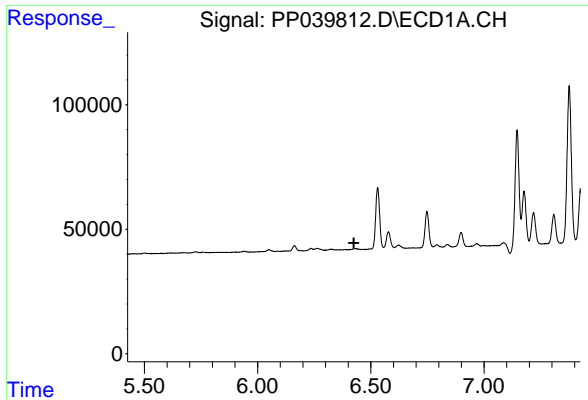
#4 AR-1016-2

R.T.: 0.000 min
 Exp R.T.: 6.252 min
 Response: 0
 Conc: N.D.



#4 AR-1016-2

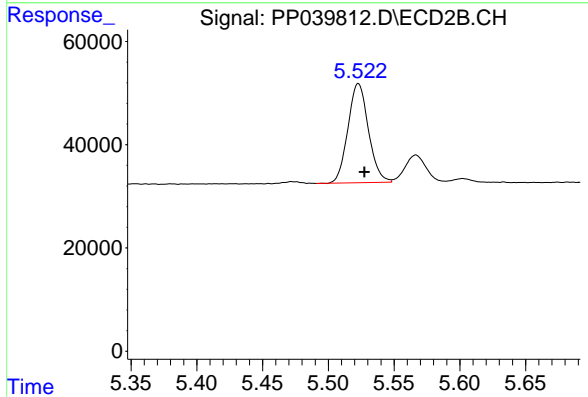
R.T.: 5.257 min
 Delta R.T.: -0.025 min
 Response: 4004
 Conc: 4.06 ng/ml



#6 AR-1016-4

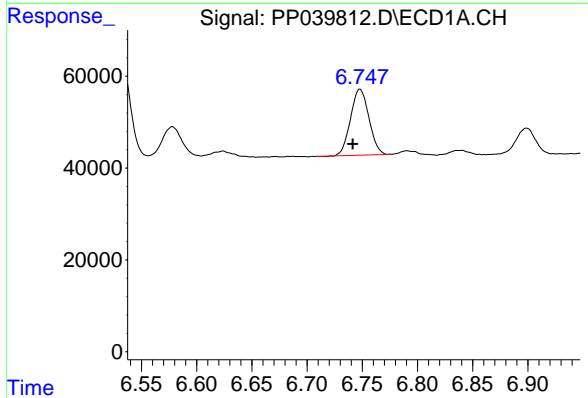
R.T.: 0.000 min
 Exp R.T.: 6.425 min
 Response: 0
 Conc: N.D.

Instrument :
 ECD_P
 ClientSampleId :



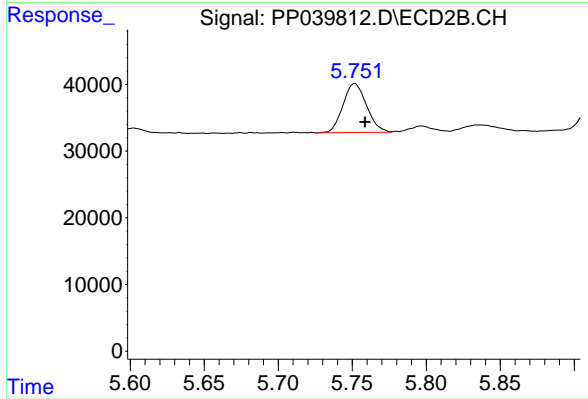
#6 AR-1016-4

R.T.: 5.523 min
 Delta R.T.: -0.005 min
 Response: 208278
 Conc: 470.06 ng/ml



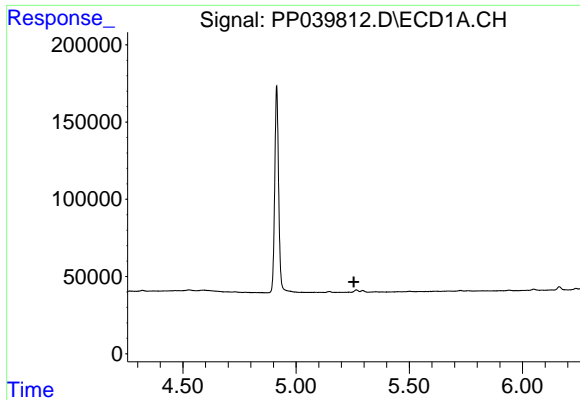
#7 AR-1016-5

R.T.: 6.748 min
 Delta R.T.: 0.007 min
 Response: 166822
 Conc: 225.39 ng/ml



#7 AR-1016-5

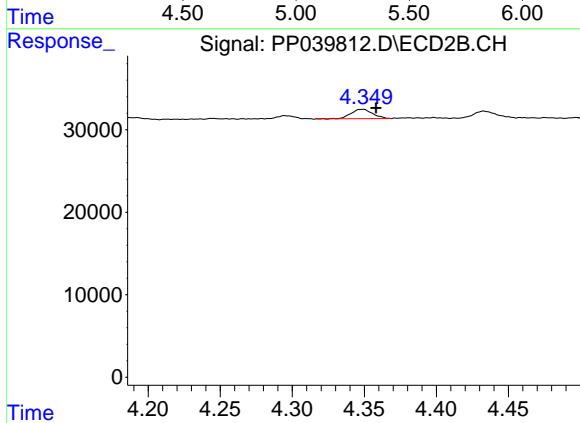
R.T.: 5.752 min
 Delta R.T.: -0.007 min
 Response: 81433
 Conc: 147.30 ng/ml



#9 AR-1221-2

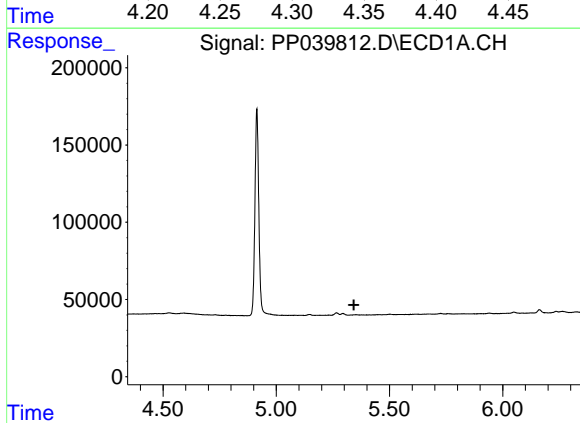
R.T.: 0.000 min
 Exp R.T.: 5.255 min
 Response: 0
 Conc: N.D.

Instrument :
 ECD_P
 ClientSampled :



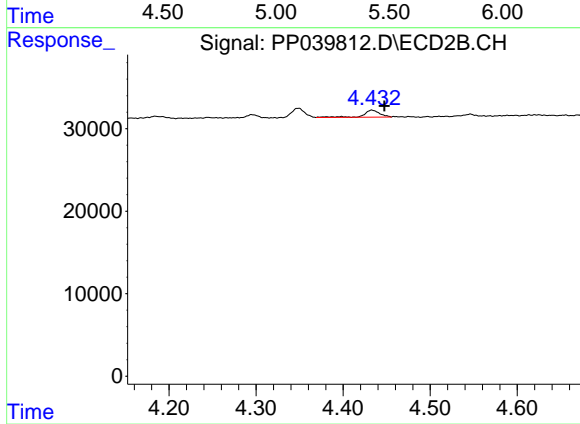
#9 AR-1221-2

R.T.: 4.349 min
 Delta R.T.: -0.009 min
 Response: 11792
 Conc: 69.20 ng/ml



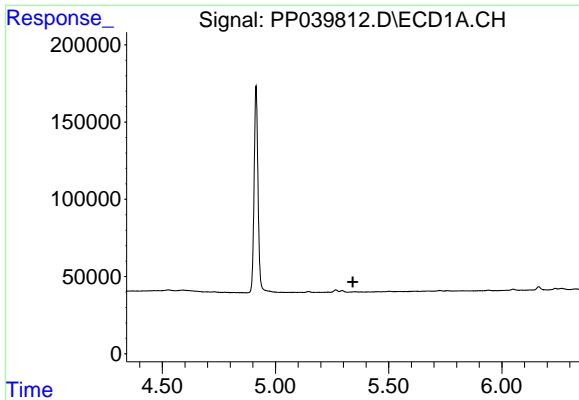
#10 AR-1221-3

R.T.: 0.000 min
 Exp R.T.: 5.343 min
 Response: 0
 Conc: N.D.



#10 AR-1221-3

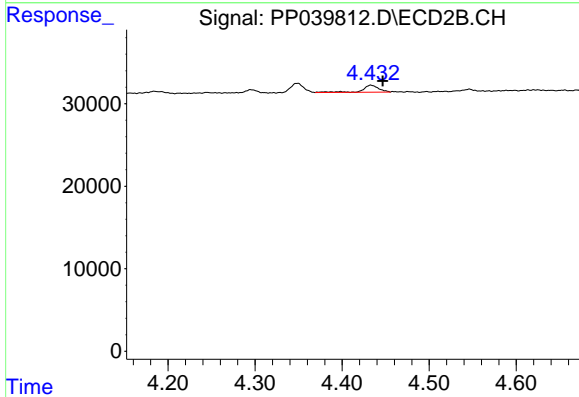
R.T.: 4.433 min
 Delta R.T.: -0.015 min
 Response: 10900
 Conc: 20.16 ng/ml



#11 AR-1232-1

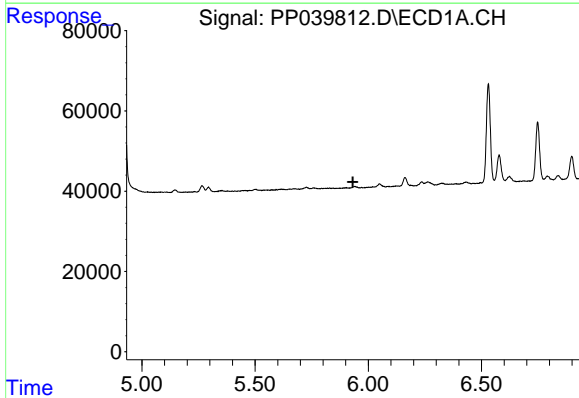
R.T.: 0.000 min
 Exp R.T.: 5.342 min
 Response: 0
 Conc: N.D.

Instrument :
 ECD_P
 ClientSampled :



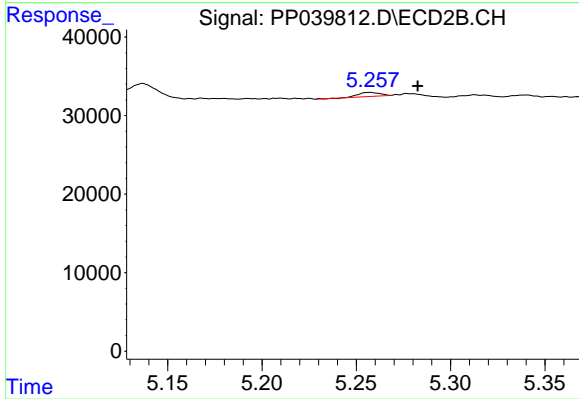
#11 AR-1232-1

R.T.: 4.433 min
 Delta R.T.: -0.014 min
 Response: 10900
 Conc: 26.95 ng/ml



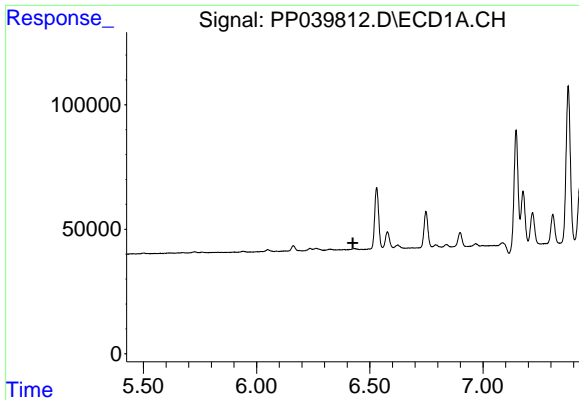
#12 AR-1232-2

R.T.: 0.000 min
 Exp R.T.: 5.932 min
 Response: 0
 Conc: N.D.



#12 AR-1232-2

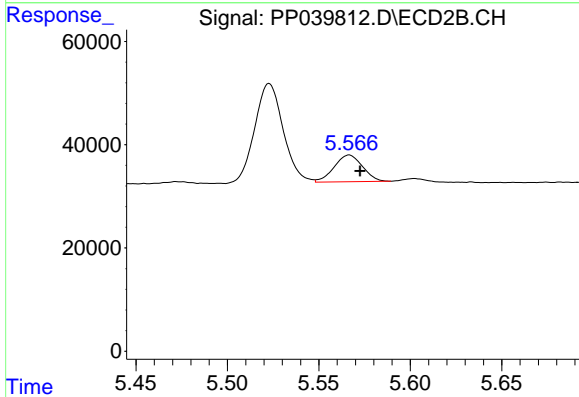
R.T.: 5.257 min
 Delta R.T.: -0.025 min
 Response: 4004
 Conc: 9.59 ng/ml



#14 AR-1232-4

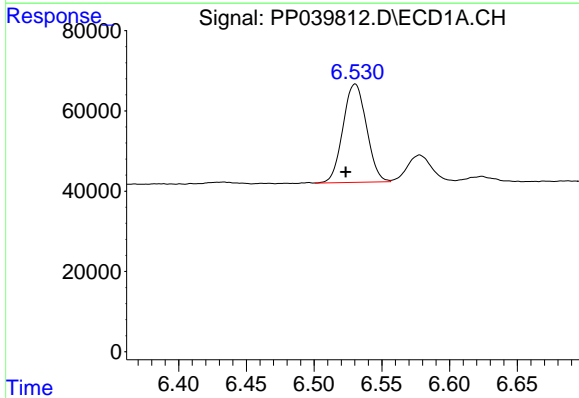
R.T.: 0.000 min
 Exp R.T.: 6.426 min
 Response: 0
 Conc: N.D.

Instrument :
 ECD_P
 ClientSampleId :



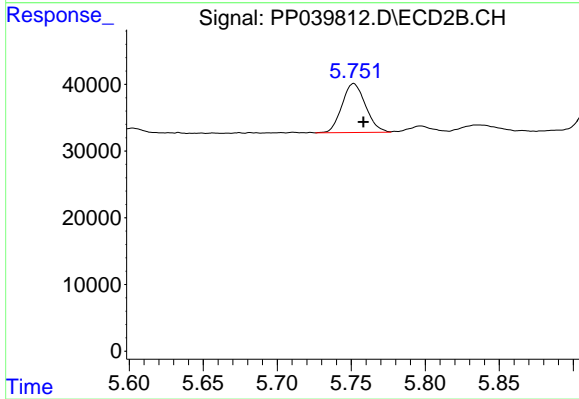
#14 AR-1232-4

R.T.: 5.567 min
 Delta R.T.: -0.006 min
 Response: 55984
 Conc: 238.53 ng/ml



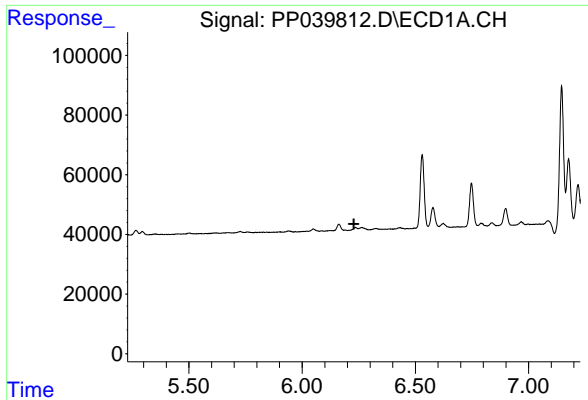
#15 AR-1232-5

R.T.: 6.530 min
 Delta R.T.: 0.007 min
 Response: 296152
 Conc: 1284.98 ng/ml



#15 AR-1232-5

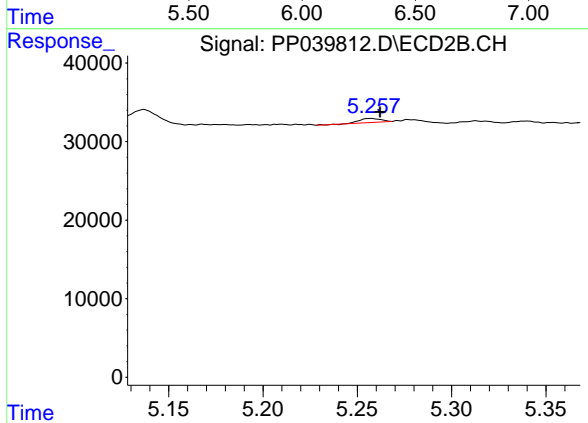
R.T.: 5.752 min
 Delta R.T.: -0.007 min
 Response: 81433
 Conc: 372.78 ng/ml



#16 AR-1242-1

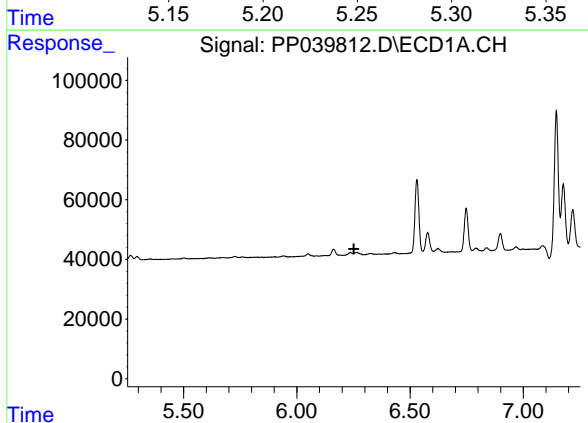
R.T.: 0.000 min
 Exp R.T.: 6.228 min
 Response: 0
 Conc: N.D.

Instrument :
 ECD_P
 ClientSampled :



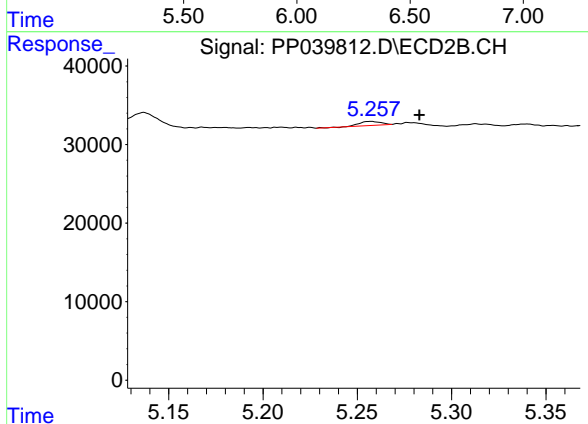
#16 AR-1242-1

R.T.: 5.257 min
 Delta R.T.: -0.005 min
 Response: 4004
 Conc: 7.46 ng/ml



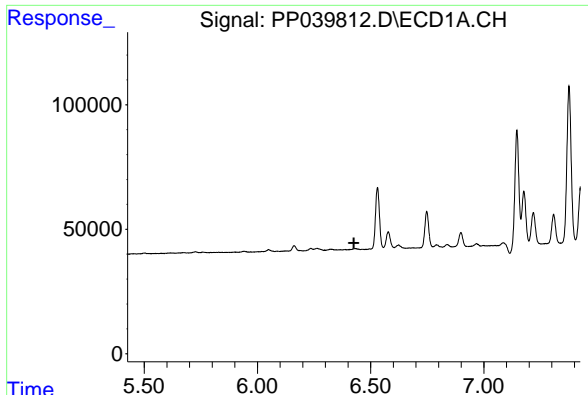
#17 AR-1242-2

R.T.: 0.000 min
 Exp R.T.: 6.252 min
 Response: 0
 Conc: N.D.



#17 AR-1242-2

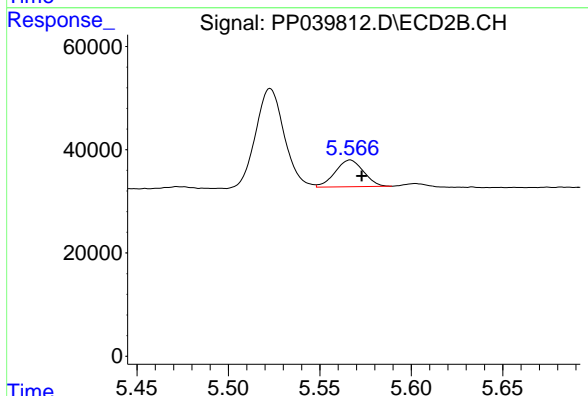
R.T.: 5.257 min
 Delta R.T.: -0.025 min
 Response: 4004
 Conc: 5.47 ng/ml



#19 AR-1242-4

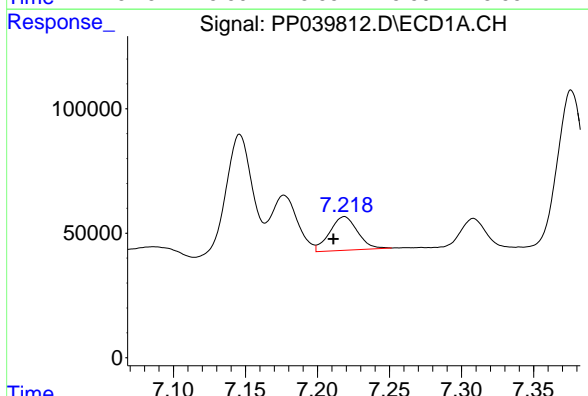
R.T.: 0.000 min
 Exp R.T.: 6.426 min
 Response: 0
 Conc: N.D.

Instrument :
 ECD_P
 ClientSampleId :



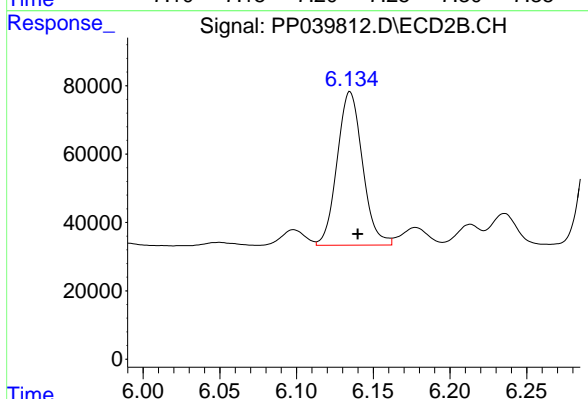
#19 AR-1242-4

R.T.: 5.567 min
 Delta R.T.: -0.006 min
 Response: 55984
 Conc: 132.52 ng/ml



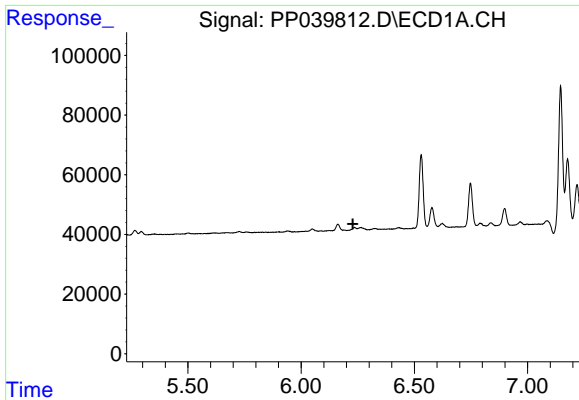
#20 AR-1242-5

R.T.: 7.219 min
 Delta R.T.: 0.007 min
 Response: 181930
 Conc: 292.93 ng/ml



#20 AR-1242-5

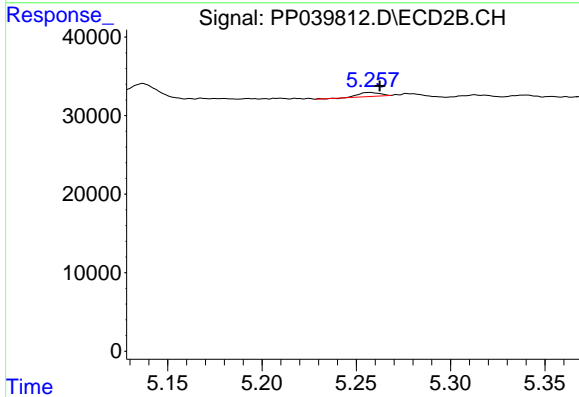
R.T.: 6.135 min
 Delta R.T.: -0.005 min
 Response: 518956
 Conc: 977.96 ng/ml



#21 AR-1248-1

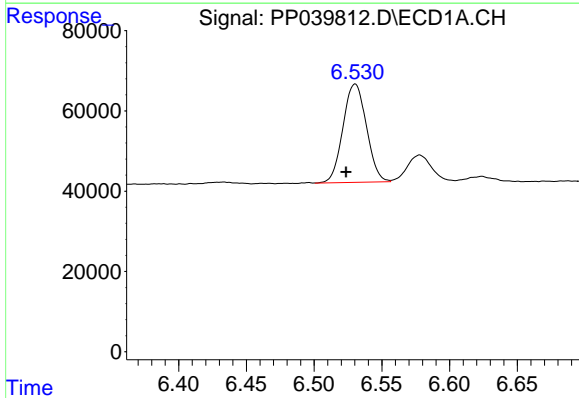
R.T.: 0.000 min
 Exp R.T.: 6.228 min
 Response: 0
 Conc: N.D.

Instrument :
 ECD_P
 ClientSampleId :



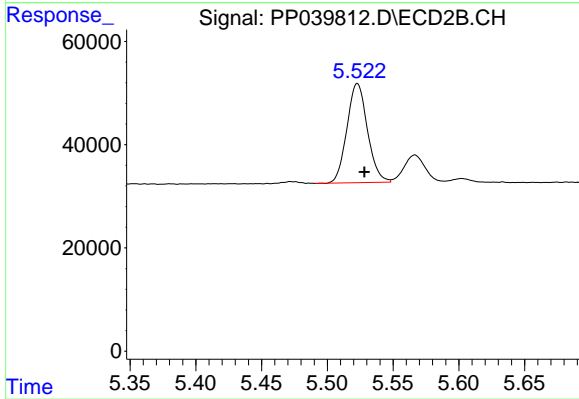
#21 AR-1248-1

R.T.: 5.257 min
 Delta R.T.: -0.005 min
 Response: 4004
 Conc: 9.22 ng/ml



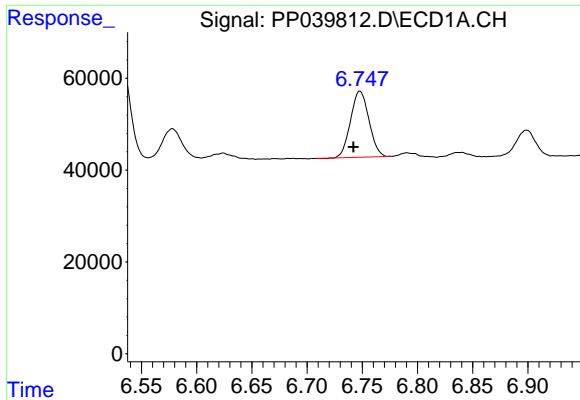
#22 AR-1248-2

R.T.: 6.530 min
 Delta R.T.: 0.007 min
 Response: 296152
 Conc: 358.90 ng/ml



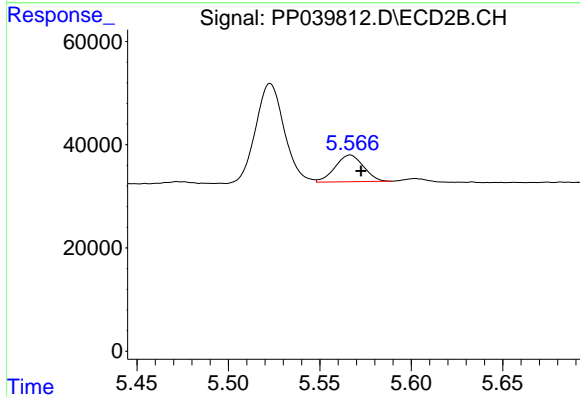
#22 AR-1248-2

R.T.: 5.523 min
 Delta R.T.: -0.005 min
 Response: 208278
 Conc: 351.47 ng/ml

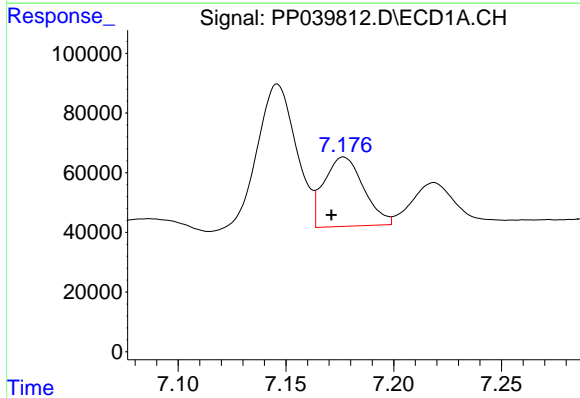


#23 AR-1248-3
 R.T.: 6.748 min
 Delta R.T.: 0.006 min
 Response: 166822
 Conc: 169.61 ng/ml

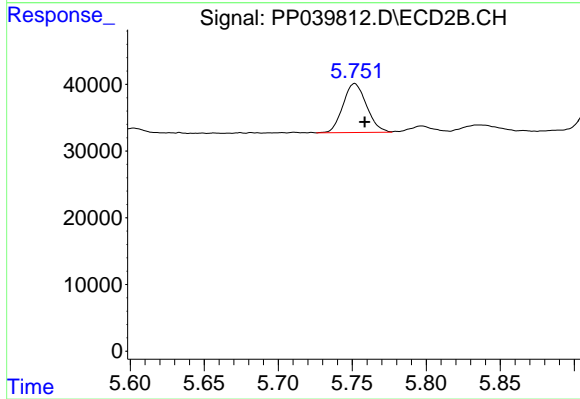
Instrument :
 ECD_P
 ClientSampleId :



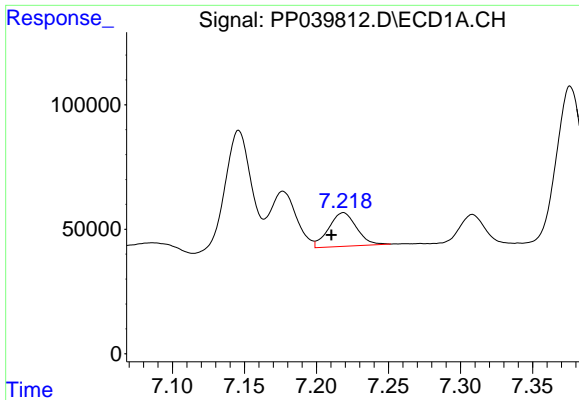
#23 AR-1248-3
 R.T.: 5.567 min
 Delta R.T.: -0.006 min
 Response: 55984
 Conc: 92.39 ng/ml



#24 AR-1248-4
 R.T.: 7.177 min
 Delta R.T.: 0.006 min
 Response: 297248
 Conc: 273.82 ng/ml

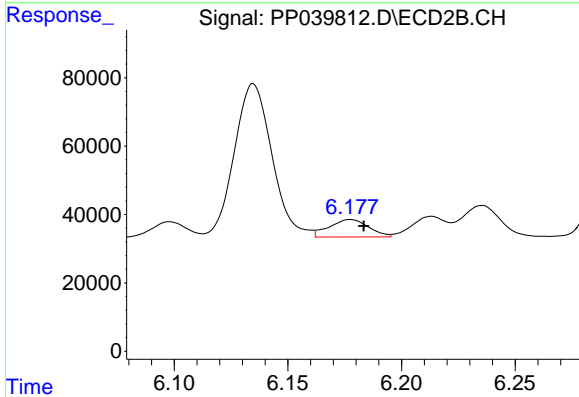


#24 AR-1248-4
 R.T.: 5.752 min
 Delta R.T.: -0.007 min
 Response: 81433
 Conc: 119.59 ng/ml

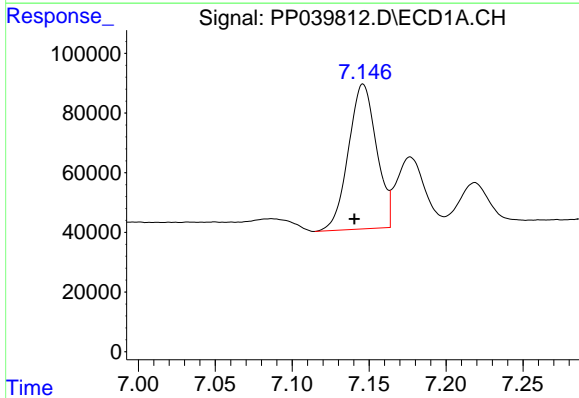


#25 AR-1248-5
 R.T.: 7.219 min
 Delta R.T.: 0.008 min
 Response: 181930
 Conc: 174.35 ng/ml

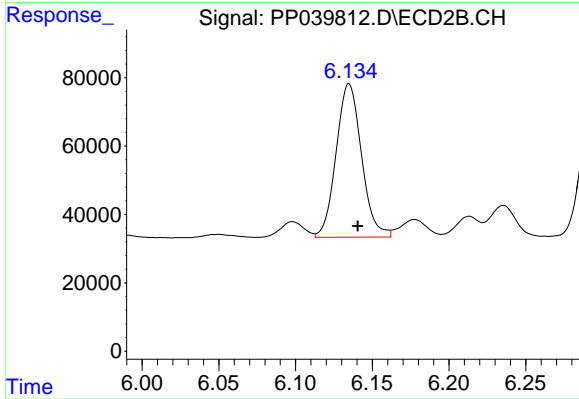
Instrument :
 ECD_P
 ClientSampleId :



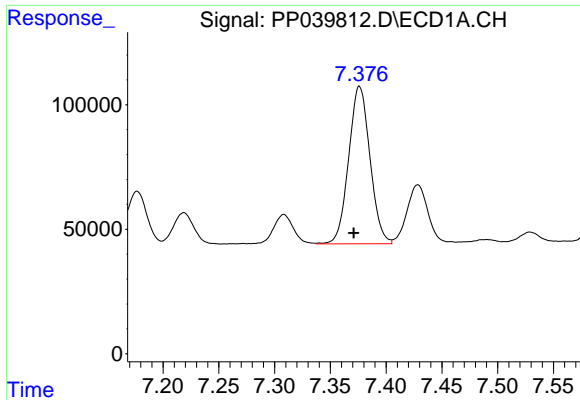
#25 AR-1248-5
 R.T.: 6.178 min
 Delta R.T.: -0.006 min
 Response: 61842
 Conc: 87.74 ng/ml



#26 AR-1254-1
 R.T.: 7.146 min
 Delta R.T.: 0.006 min
 Response: 616693
 Conc: 564.99 ng/ml



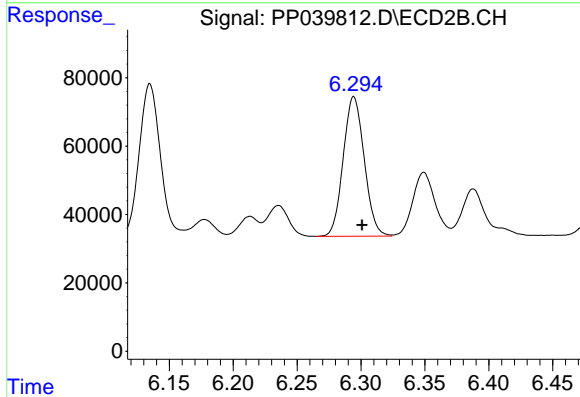
#26 AR-1254-1
 R.T.: 6.135 min
 Delta R.T.: -0.006 min
 Response: 518956
 Conc: 498.46 ng/ml



#27 AR-1254-2

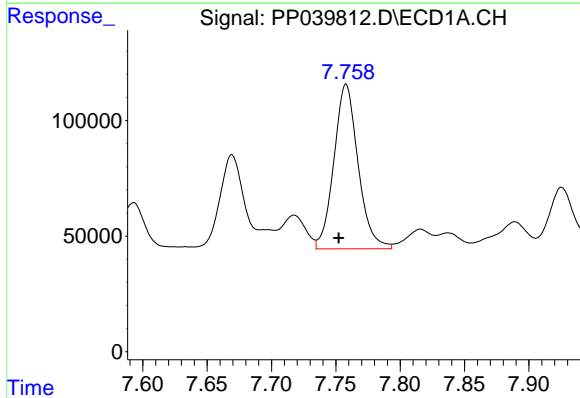
R.T.: 7.376 min
 Delta R.T.: 0.005 min
 Response: 842795
 Conc: 521.77 ng/ml

Instrument :
 ECD_P
 ClientSampled :



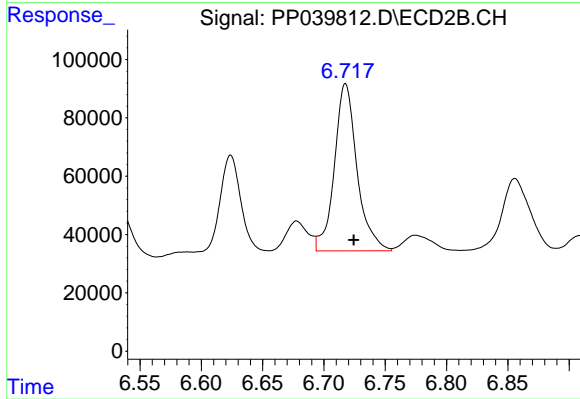
#27 AR-1254-2

R.T.: 6.294 min
 Delta R.T.: -0.006 min
 Response: 468685
 Conc: 486.34 ng/ml



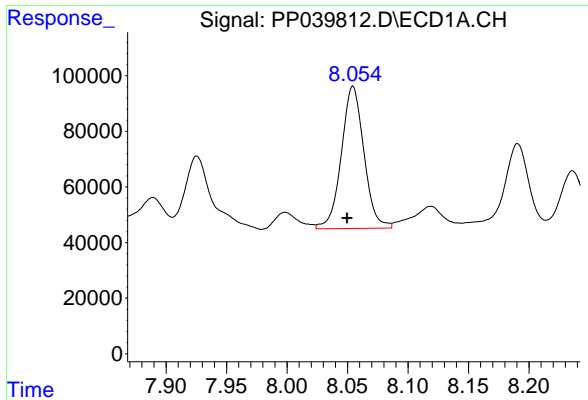
#28 AR-1254-3

R.T.: 7.758 min
 Delta R.T.: 0.006 min
 Response: 932283
 Conc: 560.31 ng/ml



#28 AR-1254-3

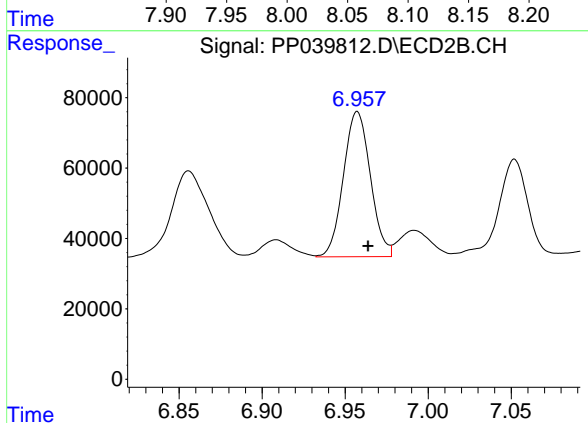
R.T.: 6.718 min
 Delta R.T.: -0.007 min
 Response: 738208
 Conc: 490.72 ng/ml



#29 AR-1254-4

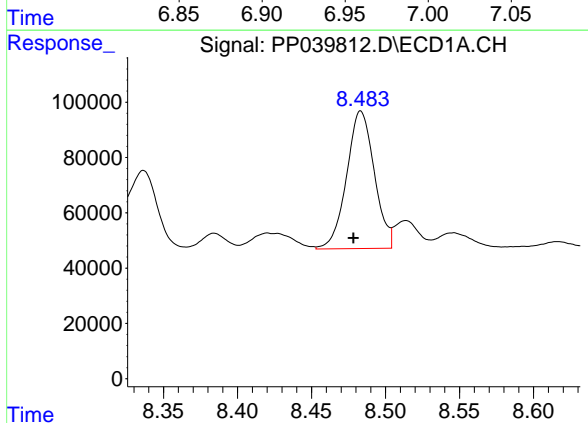
R.T.: 8.054 min
 Delta R.T.: 0.005 min
 Response: 664984
 Conc: 544.38 ng/ml

Instrument :
 ECD_P
 ClientSampled :



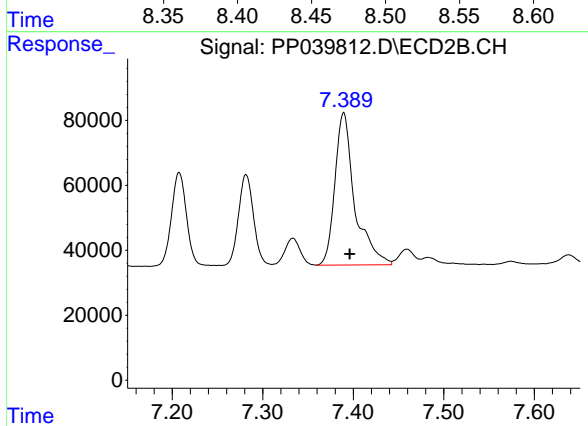
#29 AR-1254-4

R.T.: 6.957 min
 Delta R.T.: -0.006 min
 Response: 466128
 Conc: 484.07 ng/ml



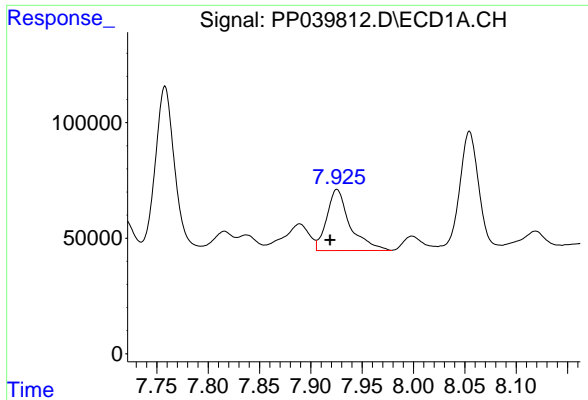
#30 AR-1254-5

R.T.: 8.483 min
 Delta R.T.: 0.005 min
 Response: 647522
 Conc: 510.34 ng/ml



#30 AR-1254-5

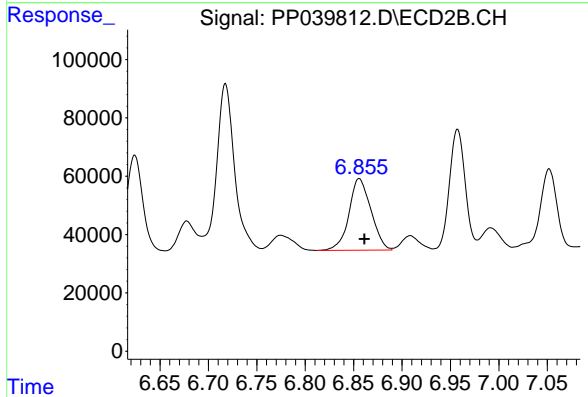
R.T.: 7.389 min
 Delta R.T.: -0.007 min
 Response: 715527
 Conc: 508.35 ng/ml



#31 AR-1260-1

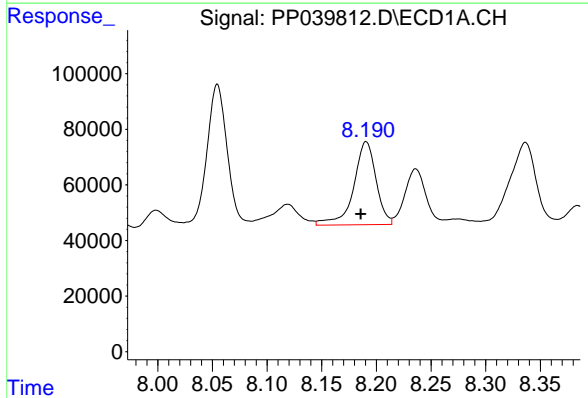
R.T.: 7.925 min
 Delta R.T.: 0.006 min
 Response: 416099
 Conc: 338.60 ng/ml

Instrument :
 ECD_P
 ClientSampleId :



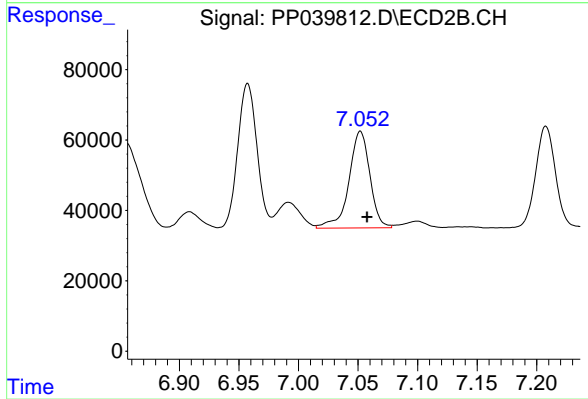
#31 AR-1260-1

R.T.: 6.856 min
 Delta R.T.: -0.005 min
 Response: 388719
 Conc: 360.96 ng/ml



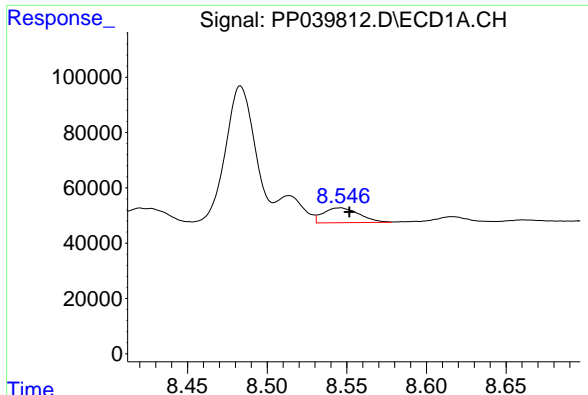
#32 AR-1260-2

R.T.: 8.191 min
 Delta R.T.: 0.005 min
 Response: 426149
 Conc: 307.81 ng/ml



#32 AR-1260-2

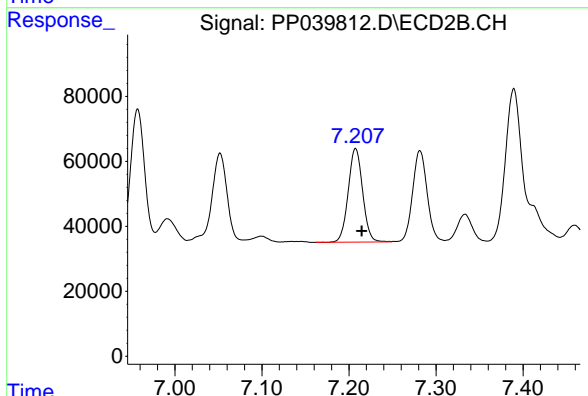
R.T.: 7.052 min
 Delta R.T.: -0.005 min
 Response: 337768
 Conc: 263.72 ng/ml



#33 AR-1260-3

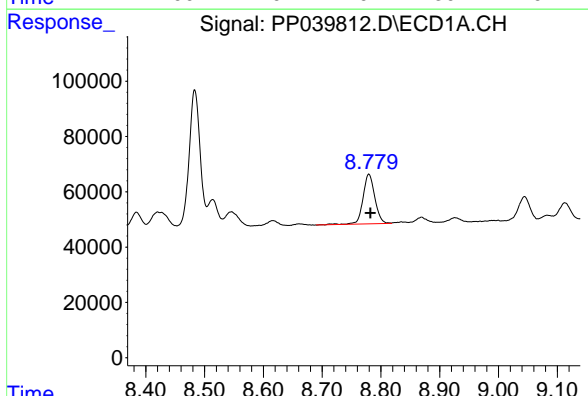
R.T.: 8.546 min
 Delta R.T.: -0.006 min
 Response: 84716
 Conc: 102.42 ng/ml

Instrument :
 ECD_P
 ClientSampled :



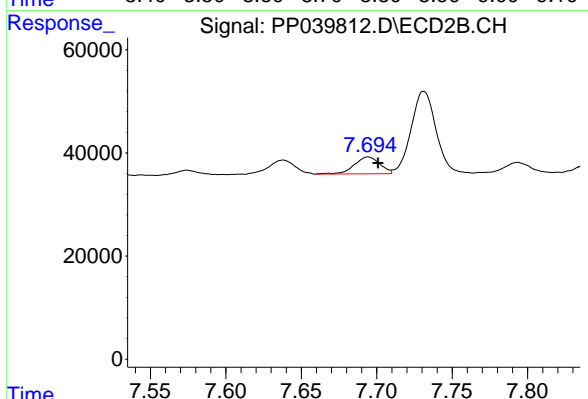
#33 AR-1260-3

R.T.: 7.208 min
 Delta R.T.: -0.007 min
 Response: 331557
 Conc: 275.60 ng/ml



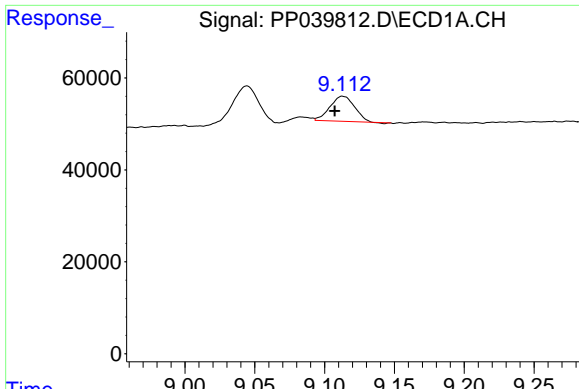
#34 AR-1260-4

R.T.: 8.780 min
 Delta R.T.: -0.003 min
 Response: 249285
 Conc: 250.04 ng/ml



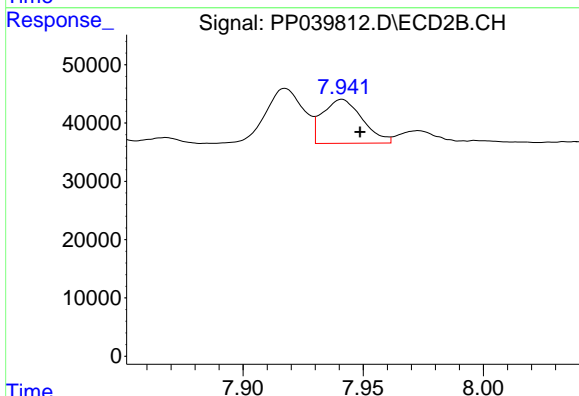
#34 AR-1260-4

R.T.: 7.694 min
 Delta R.T.: -0.007 min
 Response: 38413
 Conc: 41.24 ng/ml

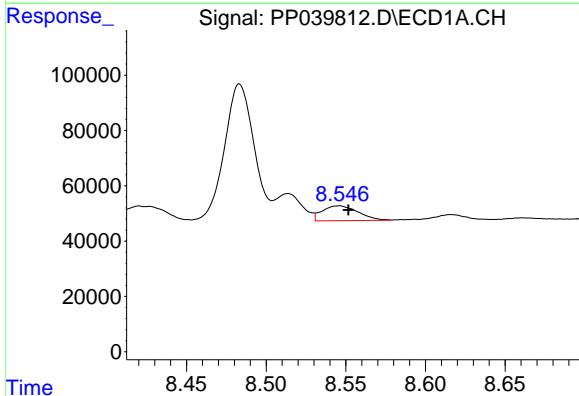


#35 AR-1260-5
 R.T.: 9.113 min
 Delta R.T.: 0.006 min
 Response: 66569
 Conc: 35.13 ng/ml

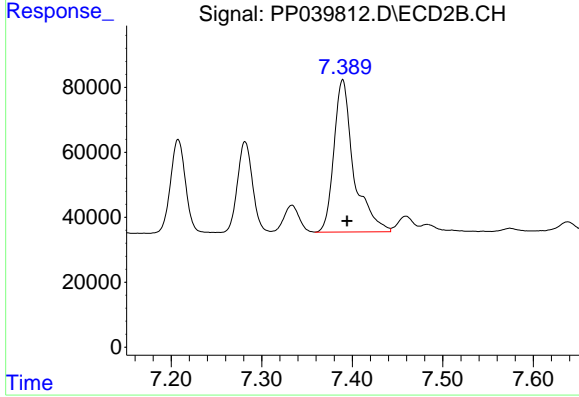
Instrument :
 ECD_P
 ClientSampleId :



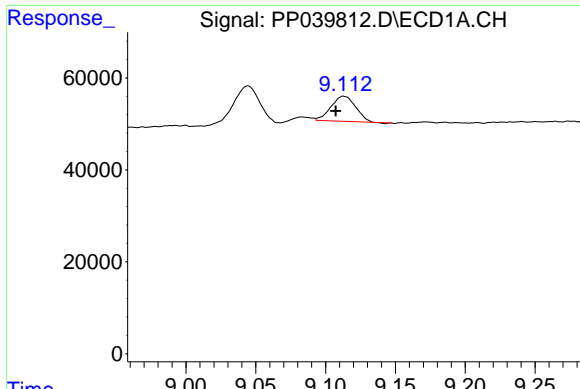
#35 AR-1260-5
 R.T.: 7.941 min
 Delta R.T.: -0.008 min
 Response: 86778
 Conc: 40.46 ng/ml



#36 AR-1262-1
 R.T.: 8.546 min
 Delta R.T.: -0.006 min
 Response: 84716
 Conc: 63.44 ng/ml



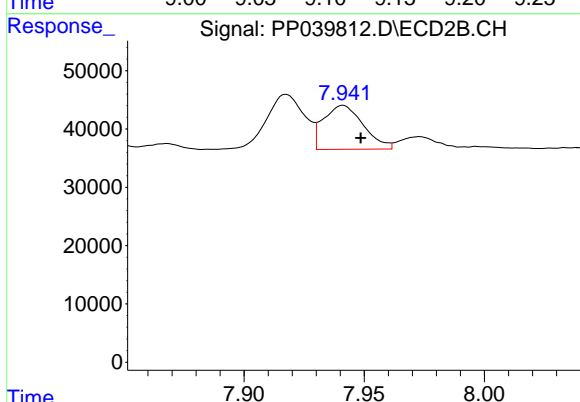
#36 AR-1262-1
 R.T.: 7.389 min
 Delta R.T.: -0.005 min
 Response: 715527
 Conc: 1014.95 ng/ml



#37 AR-1262-2

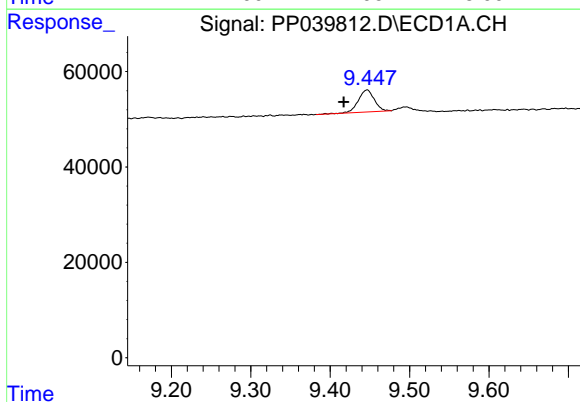
R.T.: 9.113 min
 Delta R.T.: 0.006 min
 Response: 66569
 Conc: 30.26 ng/ml

Instrument :
 ECD_P
 ClientSampleId :



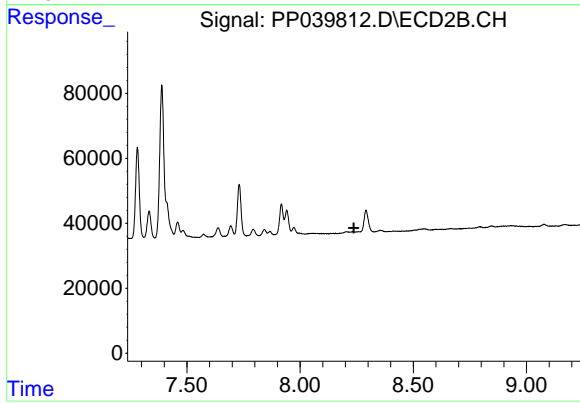
#37 AR-1262-2

R.T.: 7.941 min
 Delta R.T.: -0.007 min
 Response: 86778
 Conc: 38.20 ng/ml



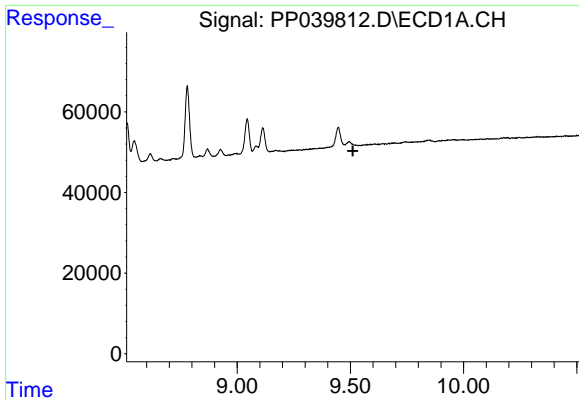
#38 AR-1262-3

R.T.: 9.447 min
 Delta R.T.: 0.029 min
 Response: 64971
 Conc: 66.56 ng/ml



#38 AR-1262-3

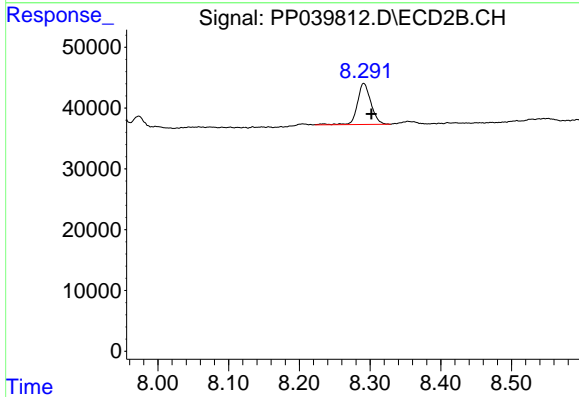
R.T.: 0.000 min
 Exp R.T. : 8.238 min
 Response: 0
 Conc: N.D.



#39 AR-1262-4

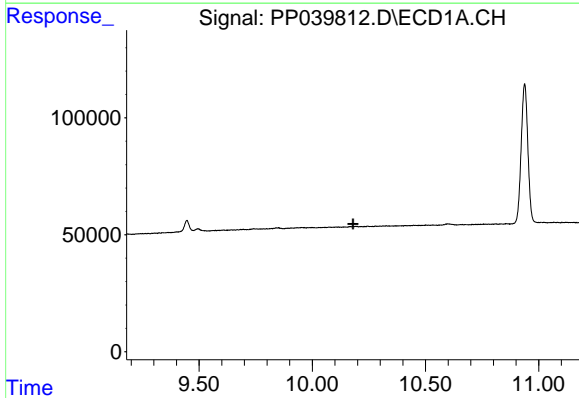
R.T.: 0.000 min
 Exp R.T. : 9.511 min
 Response: 0
 Conc: N.D.

Instrument :
 ECD_P
 ClientSampleId :



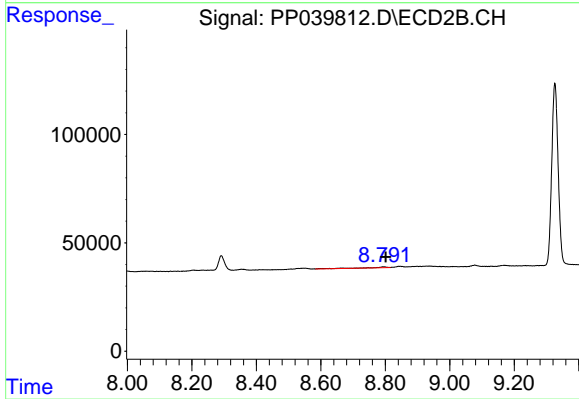
#39 AR-1262-4

R.T.: 8.291 min
 Delta R.T.: -0.011 min
 Response: 89502
 Conc: 49.83 ng/ml



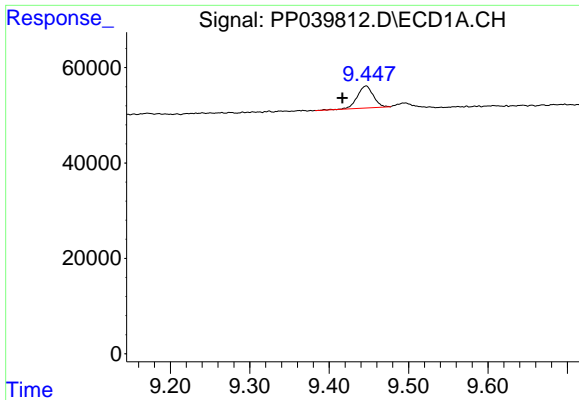
#40 AR-1262-5

R.T.: 0.000 min
 Exp R.T. : 10.180 min
 Response: 0
 Conc: N.D.



#40 AR-1262-5

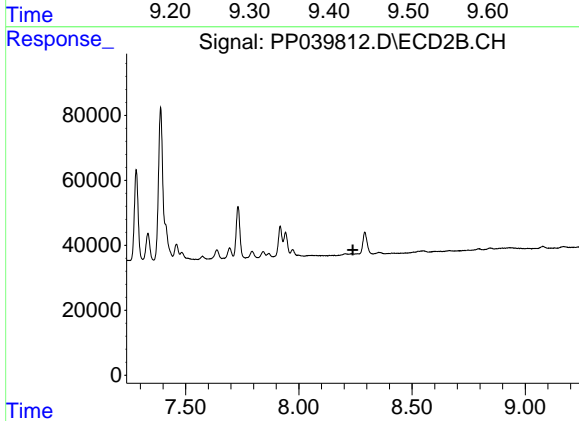
R.T.: 8.798 min
 Delta R.T.: -0.003 min
 Response: 14537
 Conc: 15.97 ng/ml



#41 AR-1268-1

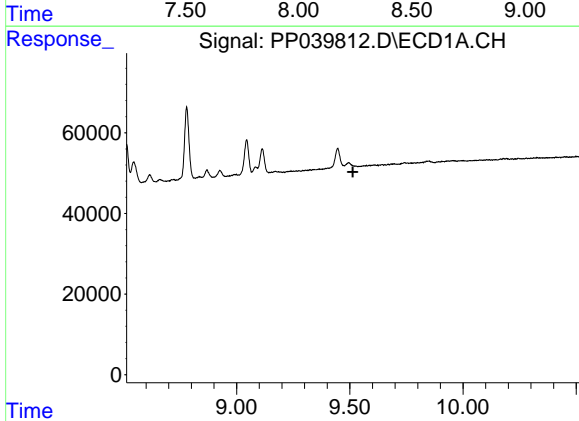
R.T.: 9.447 min
 Delta R.T.: 0.030 min
 Response: 64971
 Conc: 24.13 ng/ml

Instrument :
 ECD_P
 ClientSampled :



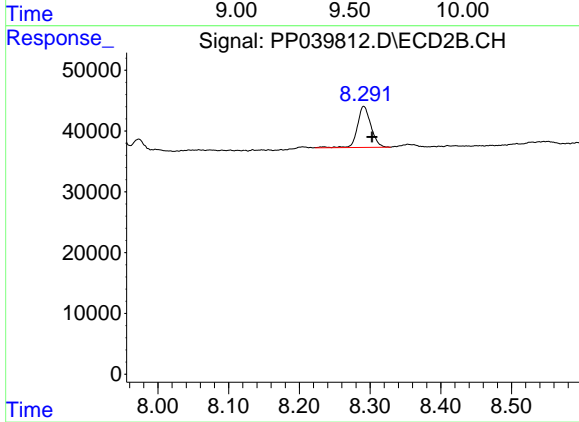
#41 AR-1268-1

R.T.: 0.000 min
 Exp R.T. : 8.239 min
 Response: 0
 Conc: N.D.



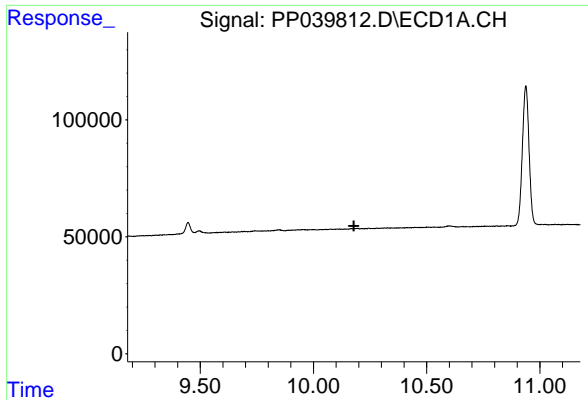
#42 AR-1268-2

R.T.: 0.000 min
 Exp R.T. : 9.514 min
 Response: 0
 Conc: N.D.



#42 AR-1268-2

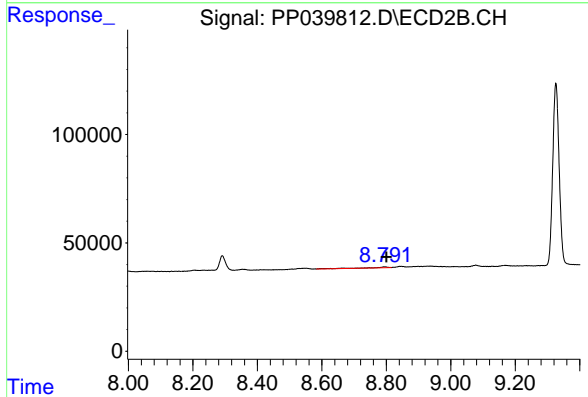
R.T.: 8.291 min
 Delta R.T.: -0.012 min
 Response: 89502
 Conc: 33.58 ng/ml



#44 AR-1268-4

R.T.: 0.000 min
Exp R.T.: 10.179 min
Response: 0
Conc: N.D.

Instrument :
ECD_P
ClientSampleId :



#44 AR-1268-4

R.T.: 8.798 min
Delta R.T.: -0.002 min
Response: 14537
Conc: 14.12 ng/ml