

Data Path : Z:\pestpcbsrv\HPCHEM1\ECD_P\Data\PP100522\
 Data File : PP051991.D
 Signal(s) : Signal #1: ECD1A.ch Signal #2: ECD2B.ch
 Acq On : 05 Oct 2022 18:48
 Operator : YP\AJ
 Sample : I.BLK
 Misc :
 ALS Vial : 2 Sample Multiplier: 1

Instrument :
 ECD_P
 ClientSampleId :
 I.BLK

Integration File signal 1: autoint1.e
 Integration File signal 2: autoint2.e
 Quant Time: Oct 06 02:11:13 2022
 Quant Method : Z:\pestpcbsrv\HPCHEM1\ECD_P\methods\PP100322.M
 Quant Title : GC EXTRACTABLES
 QLast Update : Tue Oct 04 12:08:14 2022
 Response via : Initial Calibration
 Integrator: ChemStation

Volume Inj. : 2 µl
 Signal #1 Phase : ZB-MR1 Signal #2 Phase: ZB-MR2
 Signal #1 Info : 30Mx0.32mmx 0.50µ Signal #2 Info : 30M x 0.32mm x 0.25µm

Compound	RT#1	RT#2	Resp#1	Resp#2	ng/ml	ng/ml

System Monitoring Compounds						
1) SA Tetrachlo...	4.424	3.675	31842646	25066207	17.816	19.716
2) SA Decachlor...	10.243	8.771	27485996	21062455	22.673	17.833

Target Compounds

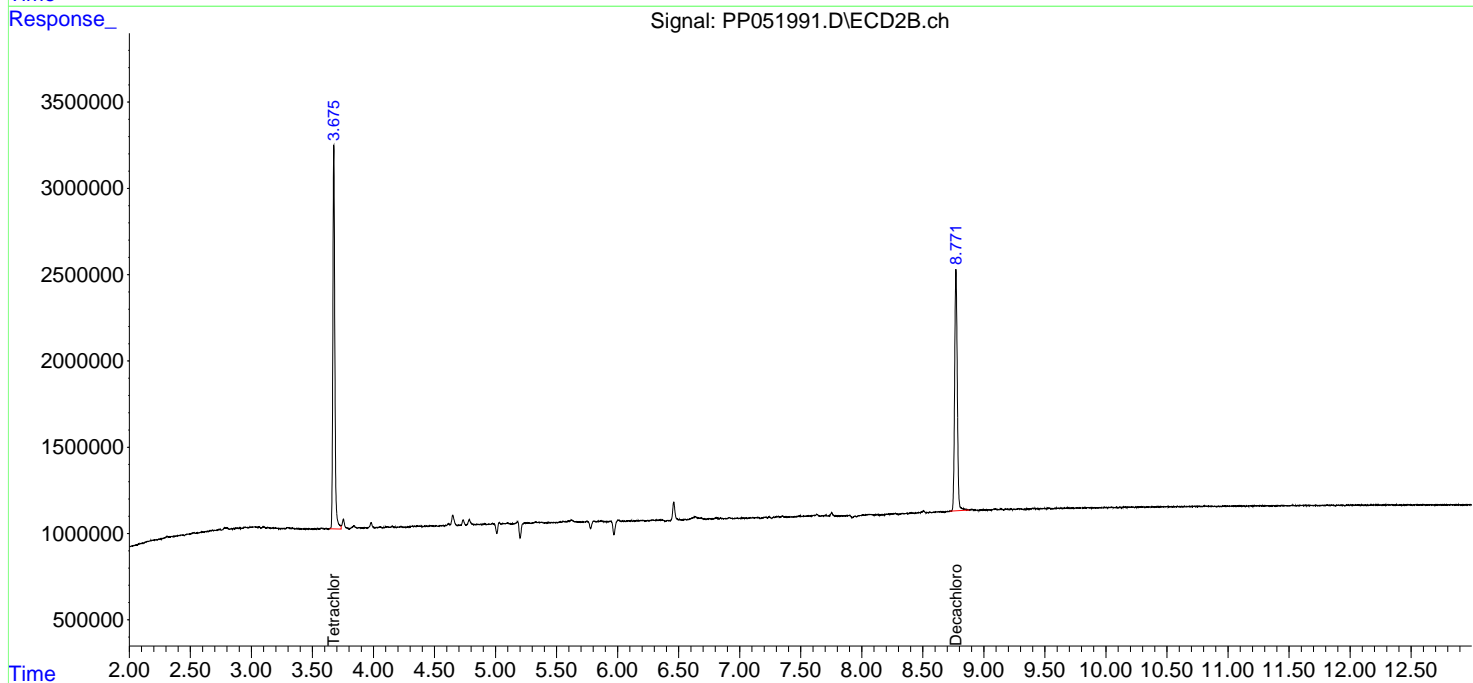
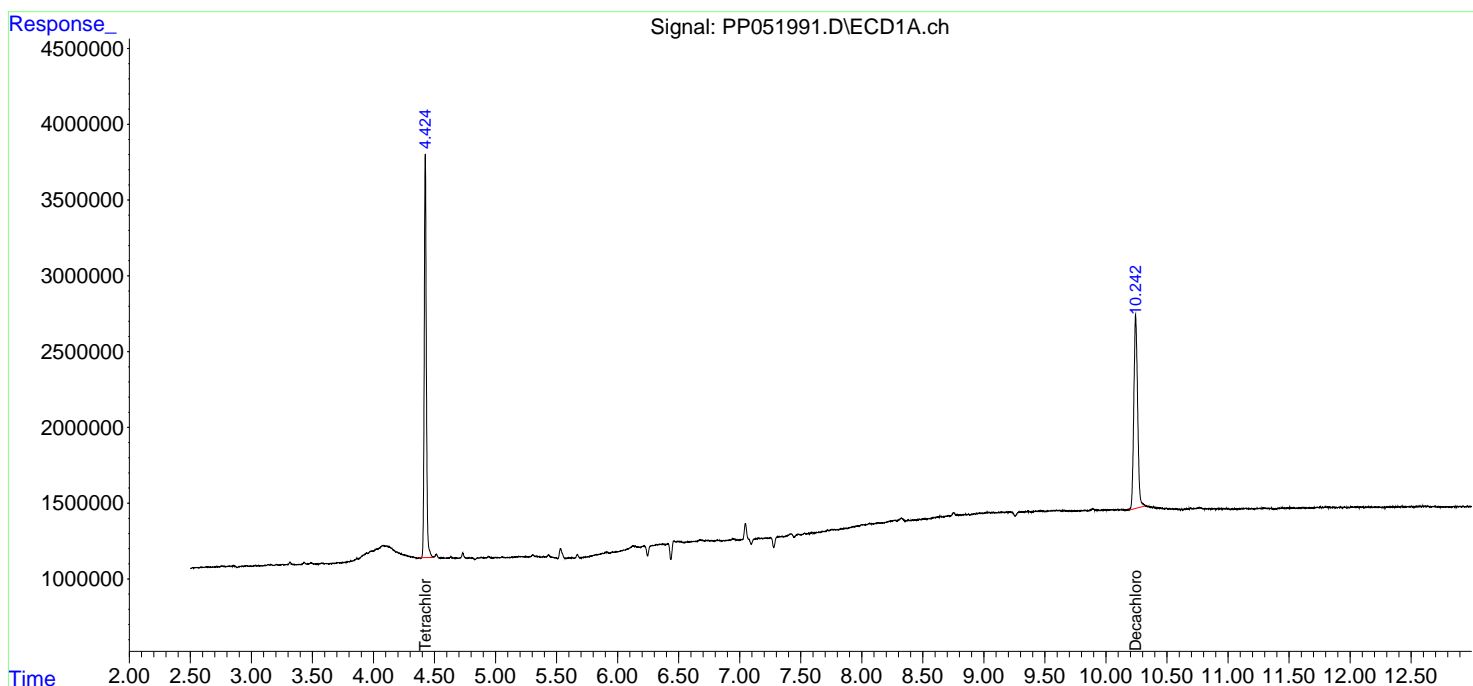
(f)=RT Delta > 1/2 Window (#)=Amounts differ by > 25% (m)=manual int.

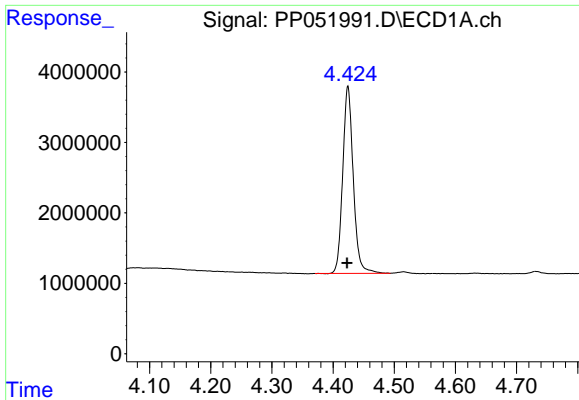
Data Path : Z:\pestpcbsrv\HPCHEM1\ECD_P\Data\PP100522\
 Data File : PP051991.D
 Signal(s) : Signal #1: ECD1A.ch Signal #2: ECD2B.ch
 Acq On : 05 Oct 2022 18:48
 Operator : YP\AJ
 Sample : I.BLK
 Misc :
 ALS Vial : 2 Sample Multiplier: 1

Instrument :
 ECD_P
 ClientSampleId :
 I.BLK

Integration File signal 1: autoint1.e
 Integration File signal 2: autoint2.e
 Quant Time: Oct 06 02:11:13 2022
 Quant Method : Z:\pestpcbsrv\HPCHEM1\ECD_P\methods\PP100322.M
 Quant Title : GC EXTRACTABLES
 QLast Update : Tue Oct 04 12:08:14 2022
 Response via : Initial Calibration
 Integrator: ChemStation

Volume Inj. : 2 µl
 Signal #1 Phase : ZB-MR1 Signal #2 Phase: ZB-MR2
 Signal #1 Info : 30Mx0.32mmx 0.50µ Signal #2 Info : 30M x 0.32mm x 0.25µm

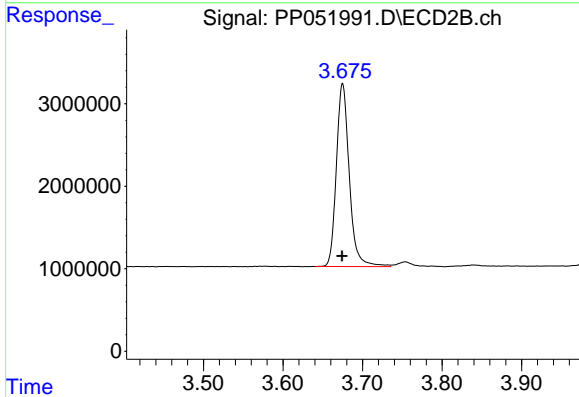




#1 Tetrachloro-m-xylene

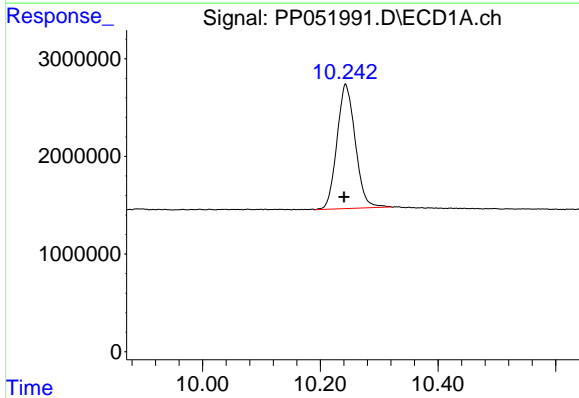
R.T.: 4.424 min
 Delta R.T.: 0.001 min
 Response: 31842646
 Conc: 17.82 ng/ml

Instrument :
 ECD_P
 ClientSampleId :
 I.BLK



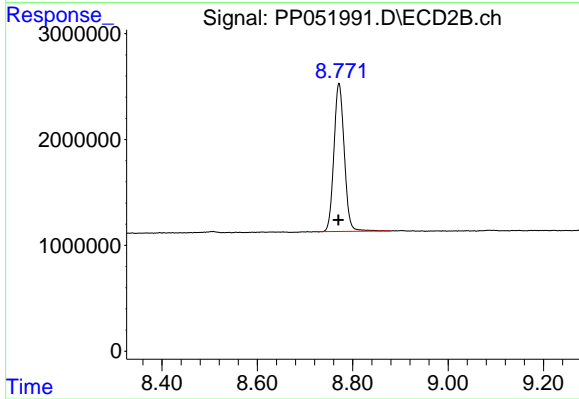
#1 Tetrachloro-m-xylene

R.T.: 3.675 min
 Delta R.T.: 0.000 min
 Response: 25066207
 Conc: 19.72 ng/ml



#2 Decachlorobiphenyl

R.T.: 10.243 min
 Delta R.T.: 0.003 min
 Response: 27485996
 Conc: 22.67 ng/ml



#2 Decachlorobiphenyl

R.T.: 8.771 min
 Delta R.T.: 0.001 min
 Response: 21062455
 Conc: 17.83 ng/ml