

Data Path : Z:\pestpcbsrv\HPCHEM1\ECD\_P\Data\PP100522\  
 Data File : PP052019.D  
 Signal(s) : Signal #1: ECD1A.ch Signal #2: ECD2B.ch  
 Acq On : 06 Oct 2022 03:20  
 Operator : YP\AJ  
 Sample : AR1248CCC500  
 Misc :  
 ALS Vial : 5 Sample Multiplier: 1

**Instrument :**  
 ECD\_P  
**ClientSampleId :**  
 AR1248CCC500

Integration File signal 1: autoint1.e  
 Integration File signal 2: autoint2.e  
 Quant Time: Oct 06 05:27:51 2022  
 Quant Method : Z:\pestpcbsrv\HPCHEM1\ECD\_P\methods\PP100322.M  
 Quant Title : GC EXTRACTABLES  
 QLast Update : Tue Oct 04 12:08:14 2022  
 Response via : Initial Calibration  
 Integrator: ChemStation

Volume Inj. : 2 µl  
 Signal #1 Phase : ZB-MR1 Signal #2 Phase: ZB-MR2  
 Signal #1 Info : 30Mx0.32mmx 0.50µ Signal #2 Info : 30M x 0.32mm x 0.25µm

Compound	RT#1	RT#2	Resp#1	Resp#2	ng/ml	ng/ml
-----						
System Monitoring Compounds						
1) SA Tetrachlo...	4.425	3.675	78901244	61618472	44.146	48.467
2) SA Decachlor...	10.243	8.770	64716213	52052768	53.383	44.070
Target Compounds						
21) L5 AR-1248-1	5.598	4.778	12771668	13093791	408.392	433.585
22) L5 AR-1248-2	5.874	5.019	22466333	16243628	425.625	390.543
23) L5 AR-1248-3	6.079	5.061	26526369	18998214	428.826	406.039
24) L5 AR-1248-4	6.484	5.236	31903831	24339614	462.794	474.810
25) L5 AR-1248-5	6.523	5.635	33576122	21830917	491.969	410.830
-----						

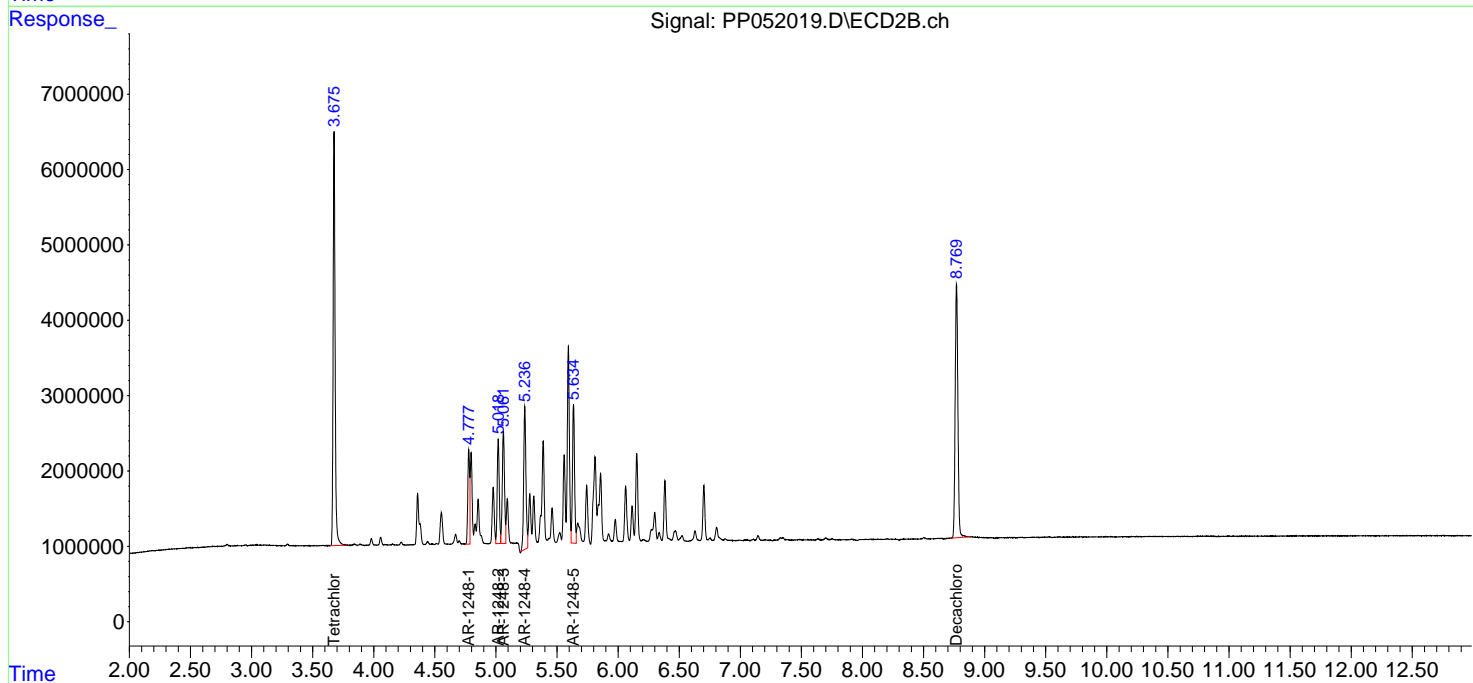
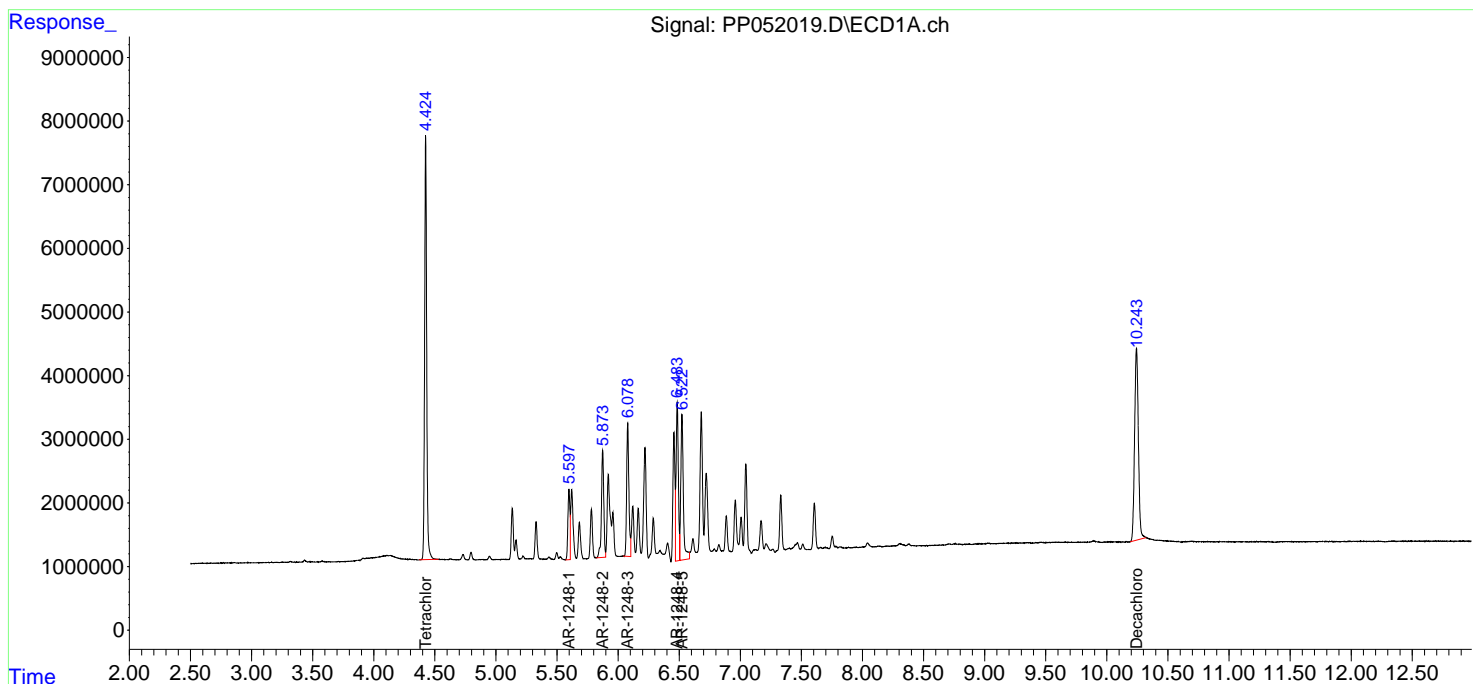
(f)=RT Delta > 1/2 Window (#)=Amounts differ by > 25% (m)=manual int.

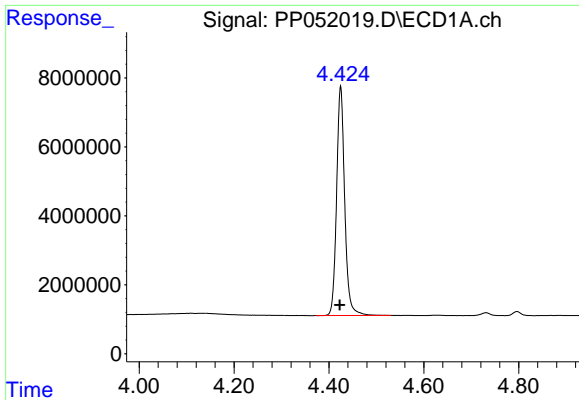
Data Path : Z:\pestpcbsrv\HPCHEM1\ECD\_P\Data\PP100522\  
 Data File : PP052019.D  
 Signal(s) : Signal #1: ECD1A.ch Signal #2: ECD2B.ch  
 Acq On : 06 Oct 2022 03:20  
 Operator : YP\AJ  
 Sample : AR1248CCC500  
 Misc :  
 ALS Vial : 5 Sample Multiplier: 1

Instrument :  
 ECD\_P  
 ClientSampleId :  
 AR1248CCC500

Integration File signal 1: autoint1.e  
 Integration File signal 2: autoint2.e  
 Quant Time: Oct 06 05:27:51 2022  
 Quant Method : Z:\pestpcbsrv\HPCHEM1\ECD\_P\methods\PP100322.M  
 Quant Title : GC EXTRACTABLES  
 QLast Update : Tue Oct 04 12:08:14 2022  
 Response via : Initial Calibration  
 Integrator: ChemStation

Volume Inj. : 2 µl  
 Signal #1 Phase : ZB-MR1 Signal #2 Phase: ZB-MR2  
 Signal #1 Info : 30Mx0.32mmx 0.50µ Signal #2 Info : 30M x 0.32mm x 0.25µm

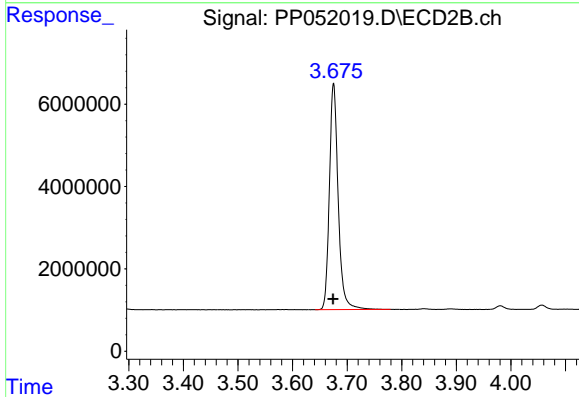




#1 Tetrachloro-m-xylene

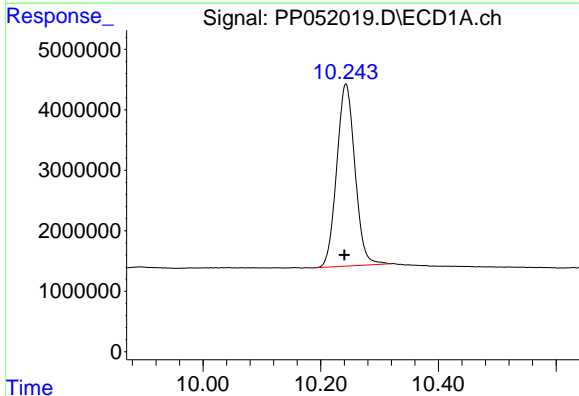
R.T.: 4.425 min  
 Delta R.T.: 0.002 min  
 Response: 78901244  
 Conc: 44.15 ng/ml

Instrument :  
 ECD\_P  
 ClientSampleId :  
 AR1248CCC500



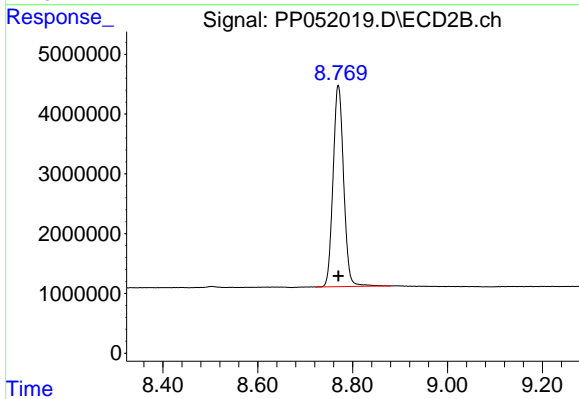
#1 Tetrachloro-m-xylene

R.T.: 3.675 min  
 Delta R.T.: 0.001 min  
 Response: 61618472  
 Conc: 48.47 ng/ml



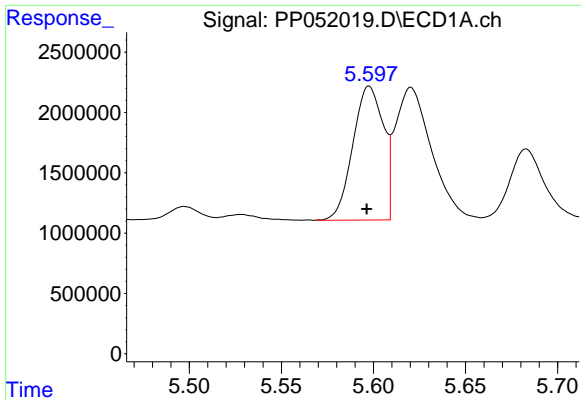
#2 Decachlorobiphenyl

R.T.: 10.243 min  
 Delta R.T.: 0.002 min  
 Response: 64716213  
 Conc: 53.38 ng/ml



#2 Decachlorobiphenyl

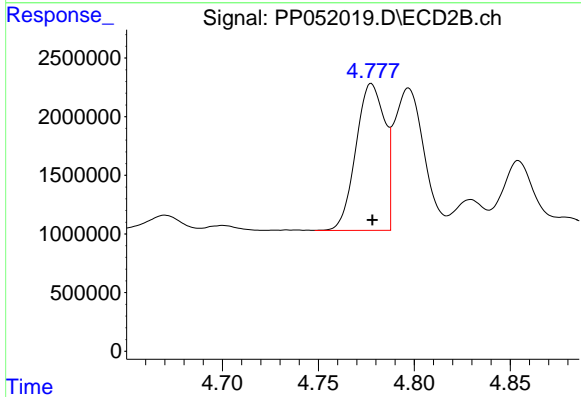
R.T.: 8.770 min  
 Delta R.T.: 0.000 min  
 Response: 52052768  
 Conc: 44.07 ng/ml



#21 AR-1248-1

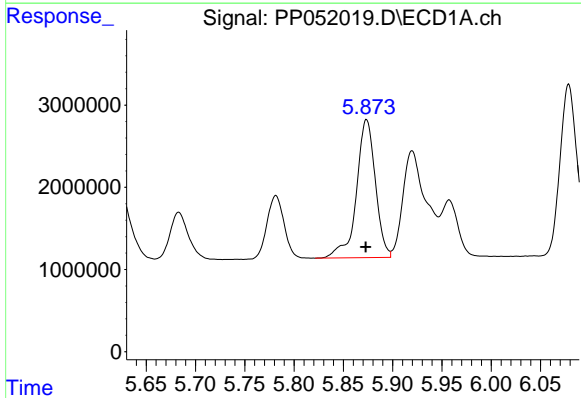
R.T.: 5.598 min  
 Delta R.T.: 0.001 min  
 Response: 12771668  
 Conc: 408.39 ng/ml

Instrument :  
 ECD\_P  
 ClientSampleId :  
 AR1248CCC500



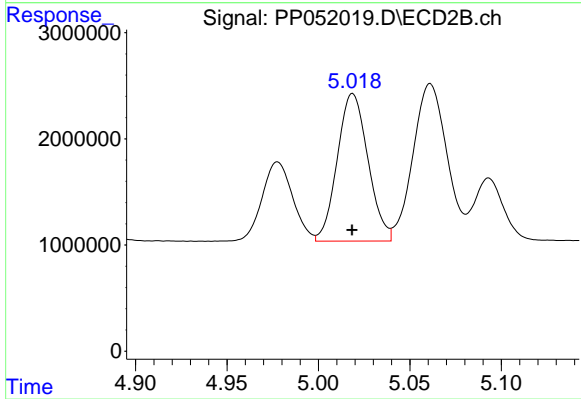
#21 AR-1248-1

R.T.: 4.778 min  
 Delta R.T.: 0.000 min  
 Response: 13093791  
 Conc: 433.59 ng/ml



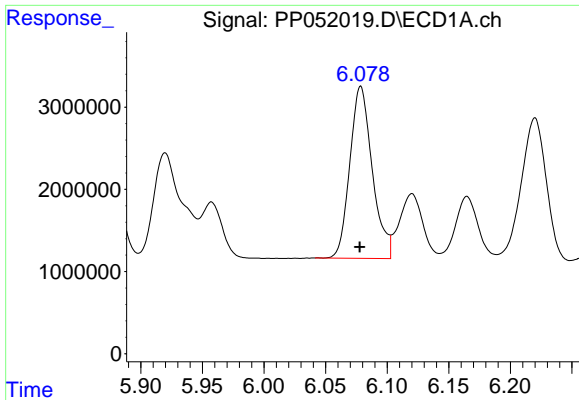
#22 AR-1248-2

R.T.: 5.874 min  
 Delta R.T.: 0.000 min  
 Response: 22466333  
 Conc: 425.62 ng/ml



#22 AR-1248-2

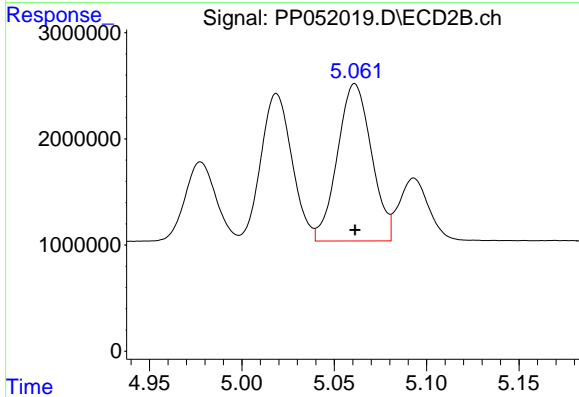
R.T.: 5.019 min  
 Delta R.T.: 0.000 min  
 Response: 16243628  
 Conc: 390.54 ng/ml



#23 AR-1248-3

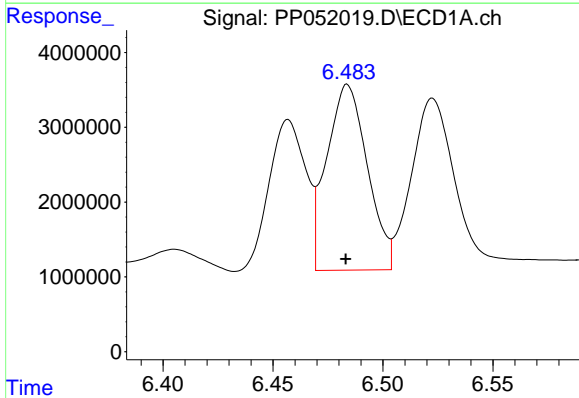
R.T.: 6.079 min  
 Delta R.T.: 0.001 min  
 Response: 26526369  
 Conc: 428.83 ng/ml

Instrument :  
 ECD\_P  
 ClientSampleId :  
 AR1248CCC500



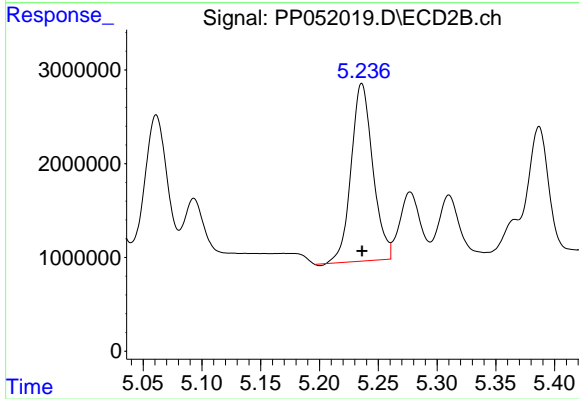
#23 AR-1248-3

R.T.: 5.061 min  
 Delta R.T.: 0.000 min  
 Response: 18998214  
 Conc: 406.04 ng/ml



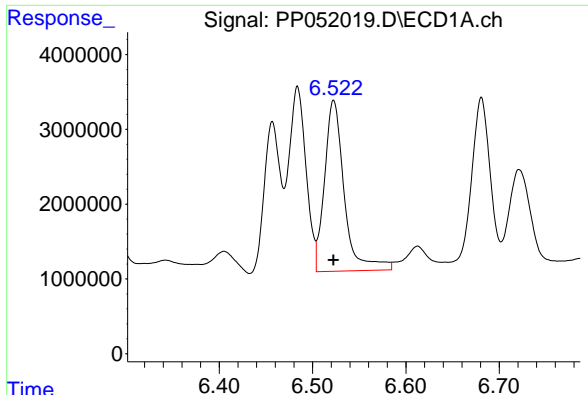
#24 AR-1248-4

R.T.: 6.484 min  
 Delta R.T.: 0.000 min  
 Response: 31903831  
 Conc: 462.79 ng/ml



#24 AR-1248-4

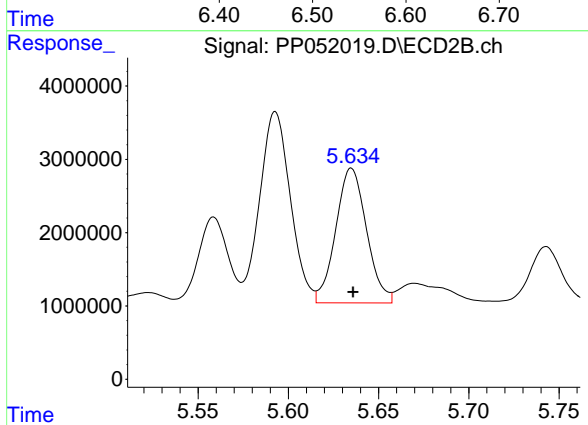
R.T.: 5.236 min  
 Delta R.T.: 0.000 min  
 Response: 24339614  
 Conc: 474.81 ng/ml



#25 AR-1248-5

R.T.: 6.523 min  
 Delta R.T.: 0.000 min  
 Response: 33576122  
 Conc: 491.97 ng/ml

Instrument :  
 ECD\_P  
 ClientSampleId :  
 AR1248CCC500



#25 AR-1248-5

R.T.: 5.635 min  
 Delta R.T.: 0.000 min  
 Response: 21830917  
 Conc: 410.83 ng/ml