

Data Path : Z:\pestpcbsrv\HPCHEM1\ECD\_P\Data\PP100622\  
 Data File : PP052042.D  
 Signal(s) : Signal #1: ECD1A.ch Signal #2: ECD2B.ch  
 Acq On : 06 Oct 2022 10:13  
 Operator : YP\AJ  
 Sample : PB148115BL  
 Misc :  
 ALS Vial : 47 Sample Multiplier: 1

Instrument :  
 ECD\_P  
 ClientSampleId :  
 PB148115BL

Integration File signal 1: autoint1.e  
 Integration File signal 2: autoint2.e  
 Quant Time: Oct 06 11:11:53 2022  
 Quant Method : Z:\pestpcbsrv\HPCHEM1\ECD\_P\methods\PP100322.M  
 Quant Title : GC EXTRACTABLES  
 QLast Update : Tue Oct 04 12:08:14 2022  
 Response via : Initial Calibration  
 Integrator: ChemStation

Volume Inj. : 2 µl  
 Signal #1 Phase : ZB-MR1 Signal #2 Phase: ZB-MR2  
 Signal #1 Info : 30Mx0.32mmx 0.50µ Signal #2 Info : 30M x 0.32mm x 0.25µm

Compound	RT#1	RT#2	Resp#1	Resp#2	ng/ml	ng/ml
-----						
System Monitoring Compounds						
1) SA Tetrachlo...	4.423	3.674	34285825	26571690	19.183	20.901
2) SA Decachlor...	10.240	8.768	32803175	25575560	27.059	21.654

Target Compounds

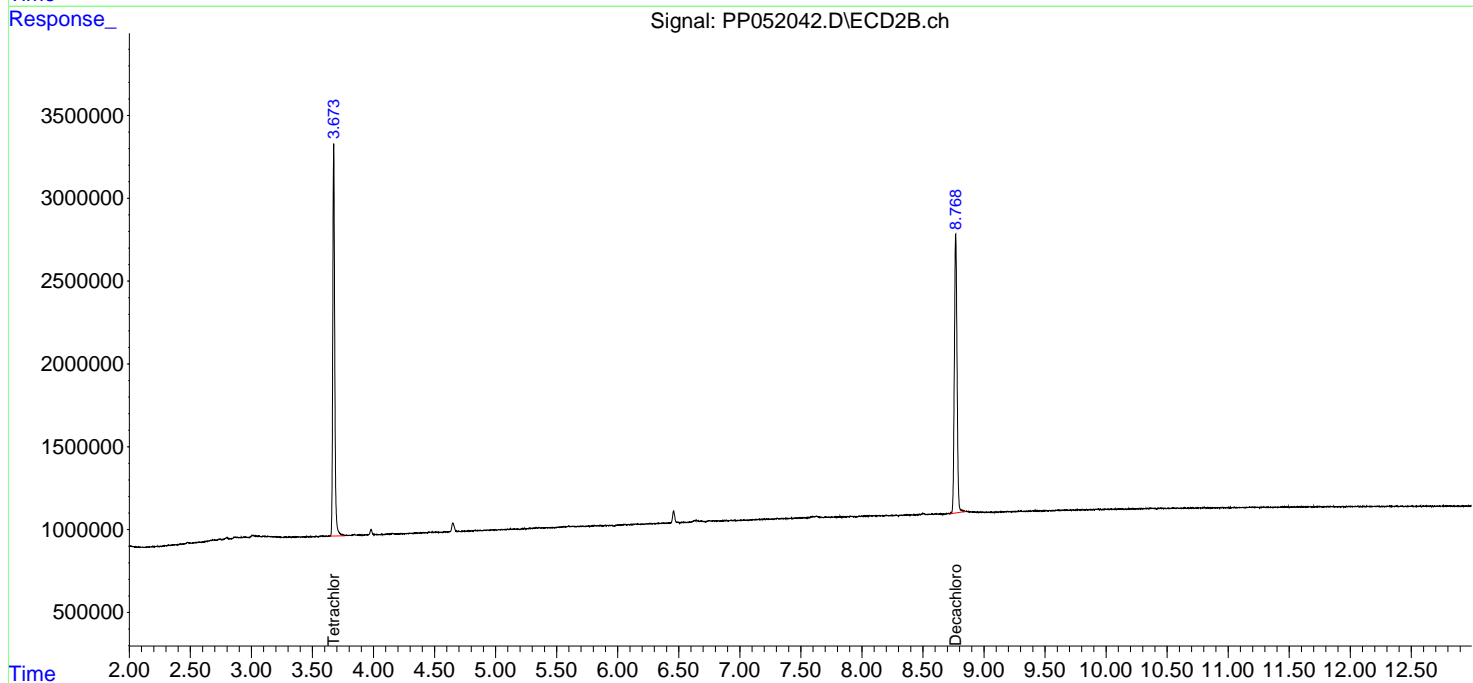
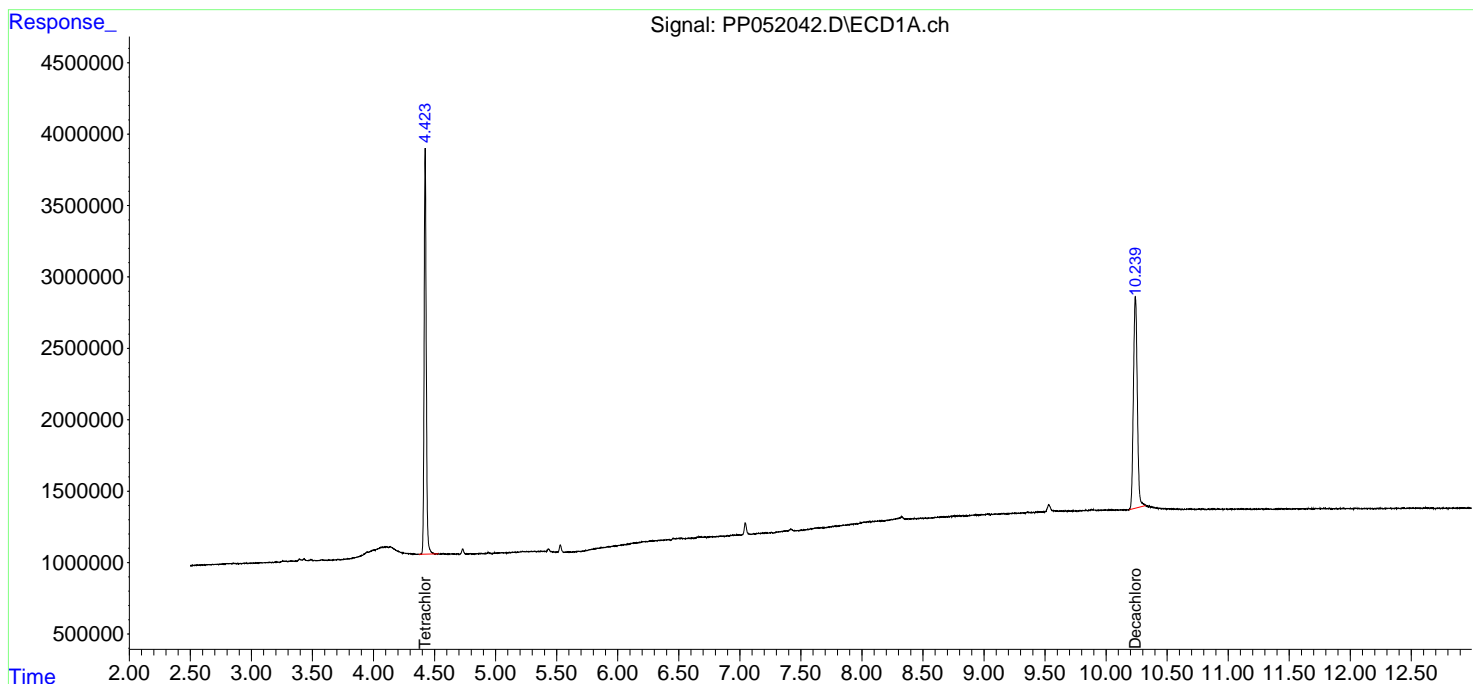
(f)=RT Delta > 1/2 Window (#)=Amounts differ by > 25% (m)=manual int.

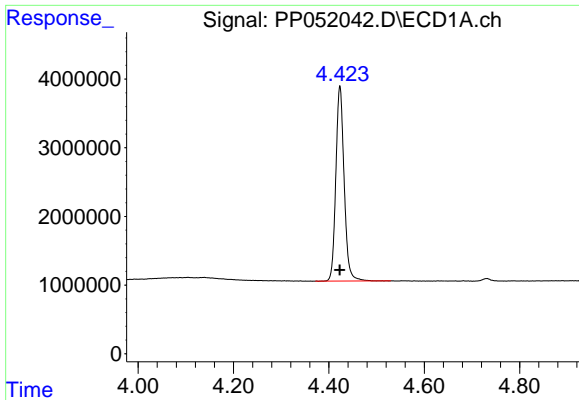
Data Path : Z:\pestpcbsrv\HPCHEM1\ECD\_P\Data\PP100622\  
 Data File : PP052042.D  
 Signal(s) : Signal #1: ECD1A.ch Signal #2: ECD2B.ch  
 Acq On : 06 Oct 2022 10:13  
 Operator : YP\AJ  
 Sample : PB148115BL  
 Misc :  
 ALS Vial : 47 Sample Multiplier: 1

Instrument :  
 ECD\_P  
 ClientSampleId :  
 PB148115BL

Integration File signal 1: autoint1.e  
 Integration File signal 2: autoint2.e  
 Quant Time: Oct 06 11:11:53 2022  
 Quant Method : Z:\pestpcbsrv\HPCHEM1\ECD\_P\methods\PP100322.M  
 Quant Title : GC EXTRACTABLES  
 QLast Update : Tue Oct 04 12:08:14 2022  
 Response via : Initial Calibration  
 Integrator: ChemStation

Volume Inj. : 2 µl  
 Signal #1 Phase : ZB-MR1 Signal #2 Phase: ZB-MR2  
 Signal #1 Info : 30Mx0.32mmx 0.50µ Signal #2 Info : 30M x 0.32mm x 0.25µm

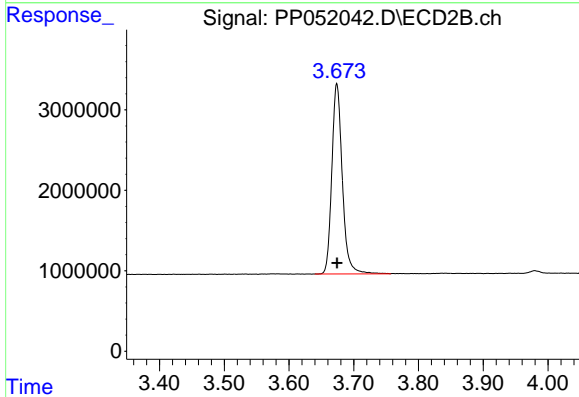




#1 Tetrachloro-m-xylene

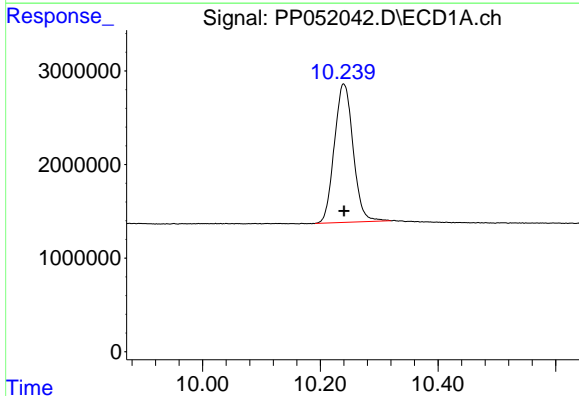
R.T.: 4.423 min  
 Delta R.T.: 0.000 min  
 Response: 34285825  
 Conc: 19.18 ng/ml

Instrument :  
 ECD\_P  
 ClientSampleId :  
 PB148115BL



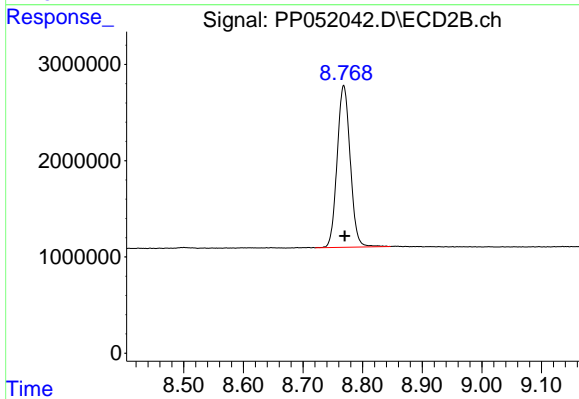
#1 Tetrachloro-m-xylene

R.T.: 3.674 min  
 Delta R.T.: 0.000 min  
 Response: 26571690  
 Conc: 20.90 ng/ml



#2 Decachlorobiphenyl

R.T.: 10.240 min  
 Delta R.T.: 0.000 min  
 Response: 32803175  
 Conc: 27.06 ng/ml



#2 Decachlorobiphenyl

R.T.: 8.768 min  
 Delta R.T.: -0.002 min  
 Response: 25575560  
 Conc: 21.65 ng/ml