

Data Path : Z:\pestpcbsrv\HPCHEM1\ECD_P\Data\PP100622\
 Data File : PP052043.D
 Signal(s) : Signal #1: ECD1A.ch Signal #2: ECD2B.ch
 Acq On : 06 Oct 2022 10:29
 Operator : YP\AJ
 Sample : PB148115BS
 Misc :
 ALS Vial : 48 Sample Multiplier: 1

Instrument :
 ECD_P
 ClientSampleId :
 PB148115BS

Integration File signal 1: autoint1.e
 Integration File signal 2: autoint2.e
 Quant Time: Oct 06 11:12:14 2022
 Quant Method : Z:\pestpcbsrv\HPCHEM1\ECD_P\methods\PP100322.M
 Quant Title : GC EXTRACTABLES
 QLast Update : Tue Oct 04 12:08:14 2022
 Response via : Initial Calibration
 Integrator: ChemStation

Volume Inj. : 2 µl
 Signal #1 Phase : ZB-MR1 Signal #2 Phase: ZB-MR2
 Signal #1 Info : 30Mx0.32mmx 0.50µ Signal #2 Info : 30M x 0.32mm x 0.25µm

Compound	RT#1	RT#2	Resp#1	Resp#2	ng/ml	ng/ml

System Monitoring Compounds						
1) SA Tetrachlo...	4.423	3.674	36507759	26677278	20.426	20.984
2) SA Decachlor...	10.243	8.770	34256568	26555206	28.257	22.483
Target Compounds						
3) L1 AR-1016-1	5.597	4.778	21175986	21367873	467.245	487.275
4) L1 AR-1016-2	5.620	4.797	30009183	30553749	467.560	495.241
5) L1 AR-1016-3	5.682	4.976	19457785	16279163	486.756	495.444
6) L1 AR-1016-4	5.781	5.019	17163475	13244373	489.580	512.107
7) L1 AR-1016-5	6.078	5.236	20178222	16947054	488.599	492.102
31) L7 AR-1260-1	7.210	6.284	38708267	32992733	544.567	478.990
32) L7 AR-1260-2	7.467	6.473	43346245	39990029	530.708	475.204
33) L7 AR-1260-3	7.829	6.629	28795100	37290182	503.461	479.037
34) L7 AR-1260-4	8.055	7.107	35227346	27175452	537.868	431.685
35) L7 AR-1260-5	8.378	7.349	62118949	62720794	488.529	427.652

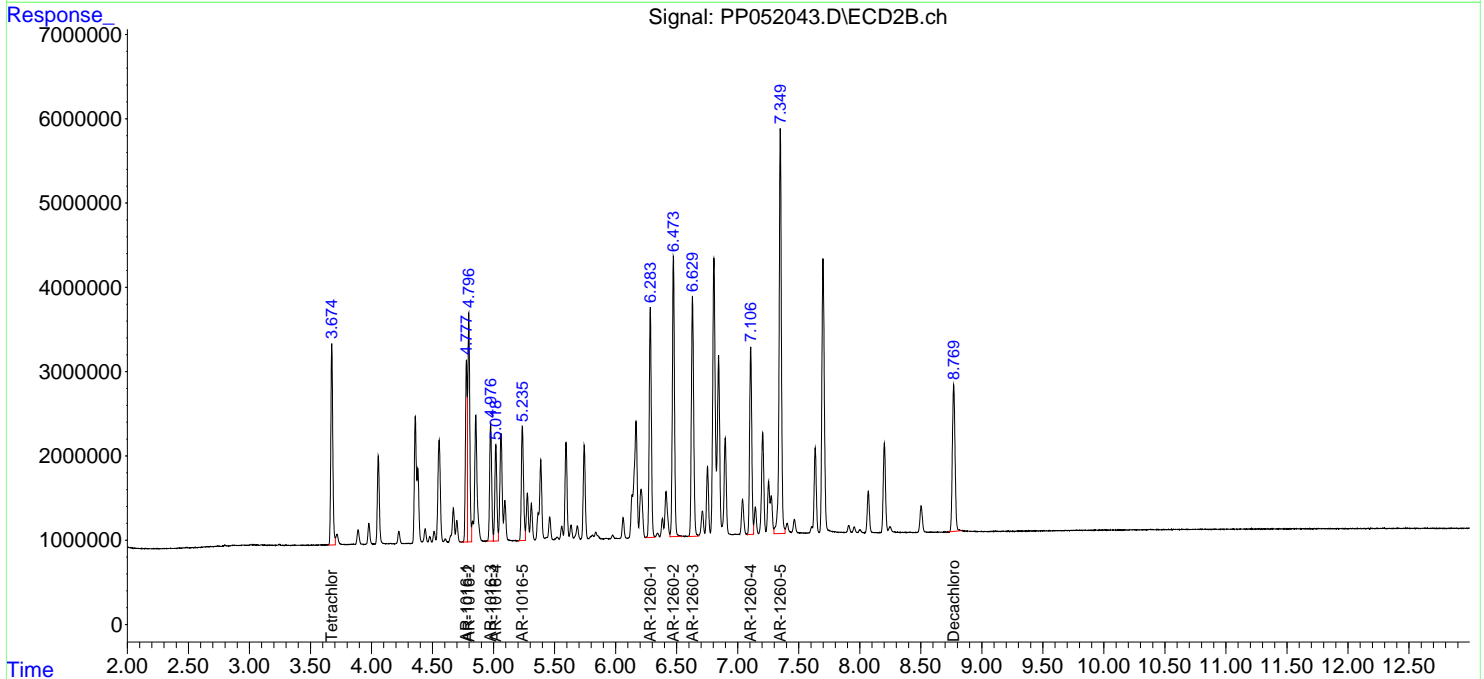
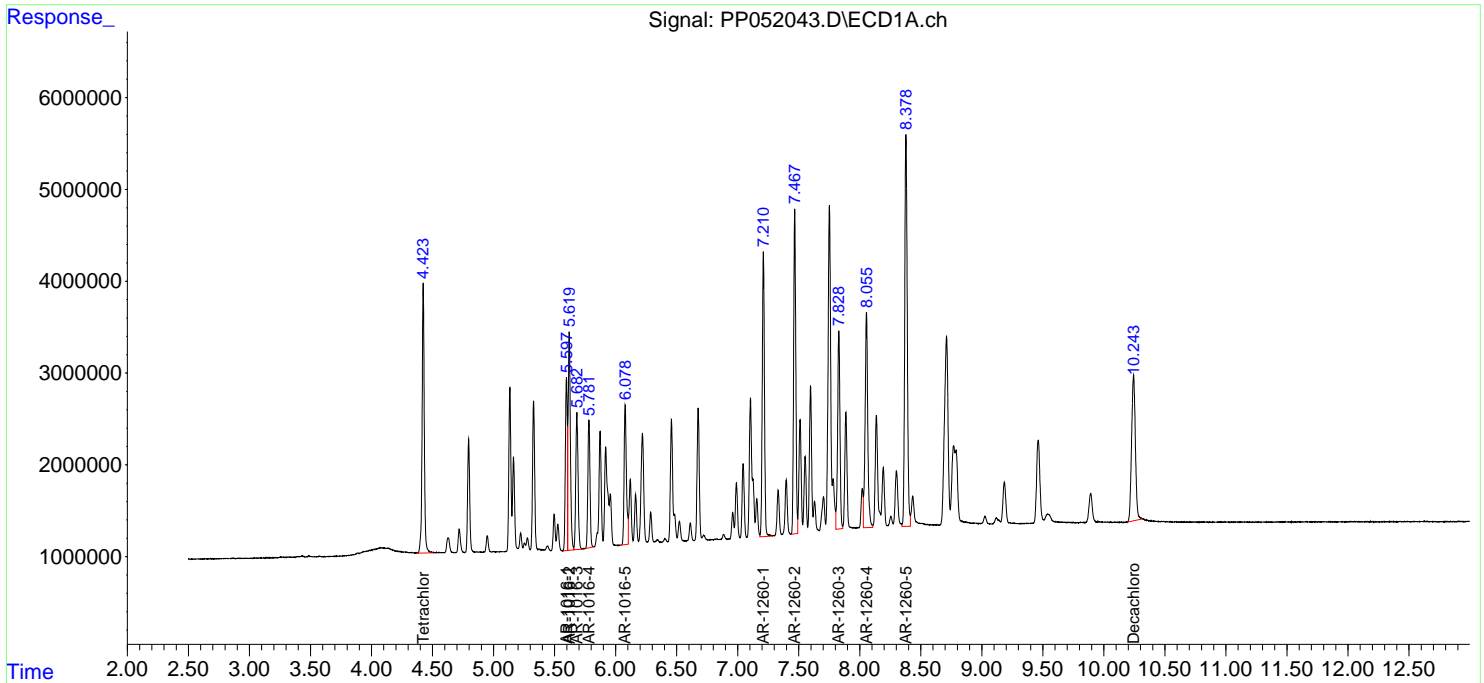
(f)=RT Delta > 1/2 Window (#)=Amounts differ by > 25% (m)=manual int.

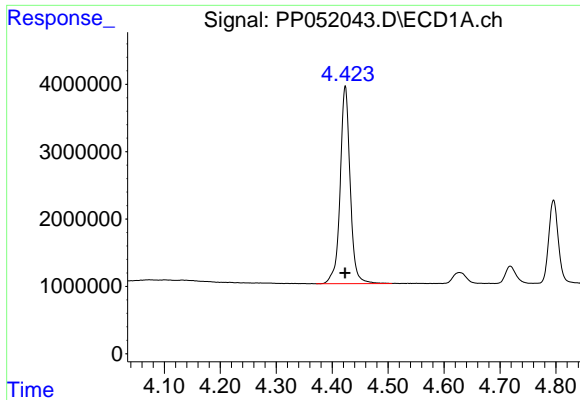
Data Path : Z:\pestpcbsrv\HPCHEM1\ECD_P\Data\PP100622\
 Data File : PP052043.D
 Signal(s) : Signal #1: ECD1A.ch Signal #2: ECD2B.ch
 Acq On : 06 Oct 2022 10:29
 Operator : YP\AJ
 Sample : PB148115BS
 Misc :
 ALS Vial : 48 Sample Multiplier: 1

Instrument :
 ECD_P
 ClientSampleId :
 PB148115BS

Integration File signal 1: autoint1.e
 Integration File signal 2: autoint2.e
 Quant Time: Oct 06 11:12:14 2022
 Quant Method : Z:\pestpcbsrv\HPCHEM1\ECD_P\methods\PP100322.M
 Quant Title : GC EXTRACTABLES
 QLast Update : Tue Oct 04 12:08:14 2022
 Response via : Initial Calibration
 Integrator: ChemStation

Volume Inj. : 2 µl
 Signal #1 Phase : ZB-MR1 Signal #2 Phase: ZB-MR2
 Signal #1 Info : 30Mx0.32mmx 0.50µ Signal #2 Info : 30M x 0.32mm x 0.25µm

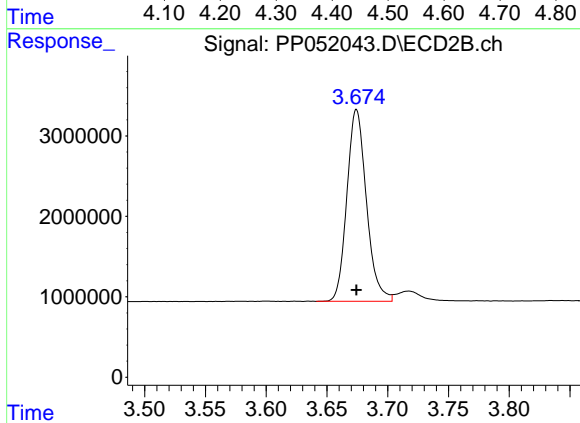




#1 Tetrachloro-m-xylene

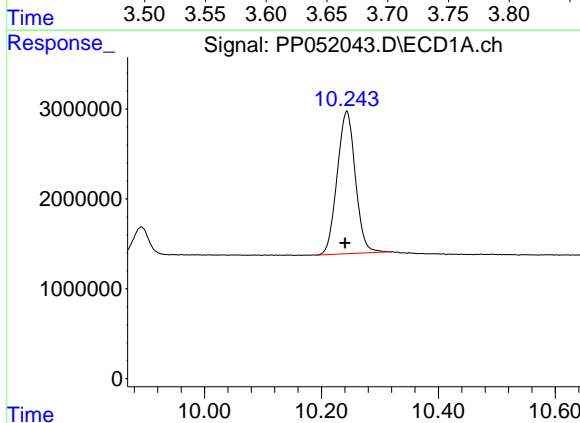
R.T.: 4.423 min
 Delta R.T.: 0.000 min
 Response: 36507759
 Conc: 20.43 ng/ml

Instrument :
 ECD_P
 ClientSampleId :
 PB148115BS



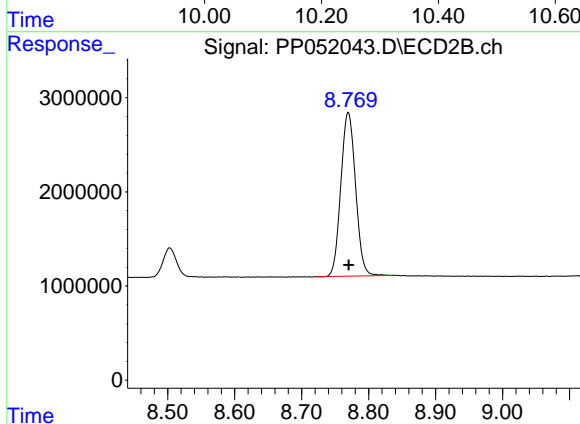
#1 Tetrachloro-m-xylene

R.T.: 3.674 min
 Delta R.T.: 0.000 min
 Response: 26677278
 Conc: 20.98 ng/ml



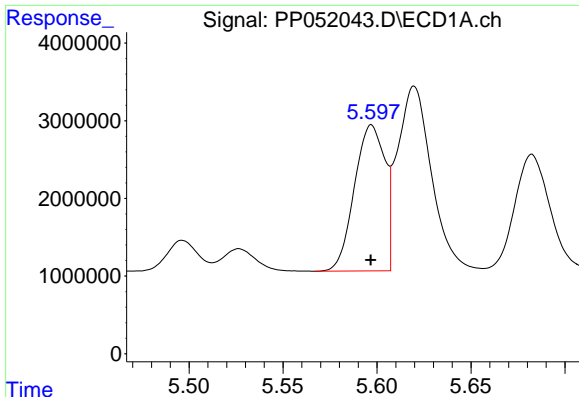
#2 Decachlorobiphenyl

R.T.: 10.243 min
 Delta R.T.: 0.003 min
 Response: 34256568
 Conc: 28.26 ng/ml



#2 Decachlorobiphenyl

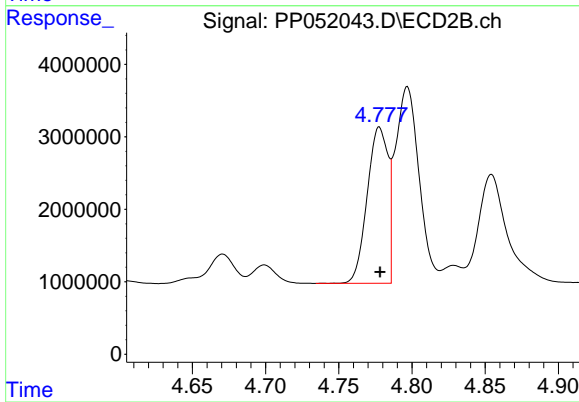
R.T.: 8.770 min
 Delta R.T.: 0.000 min
 Response: 26555206
 Conc: 22.48 ng/ml



#3 AR-1016-1

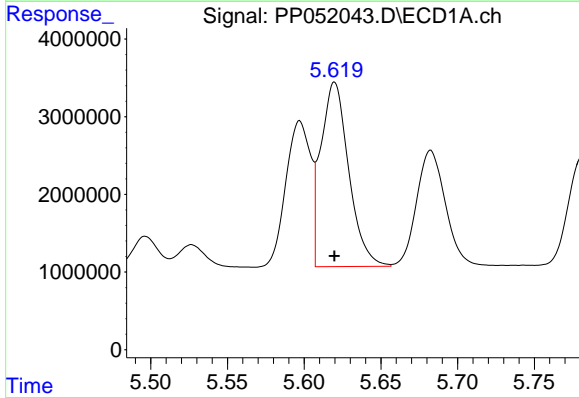
R.T.: 5.597 min
 Delta R.T.: 0.000 min
 Response: 21175986
 Conc: 467.25 ng/ml

Instrument :
 ECD_P
 ClientSampleId :
 PB148115BS



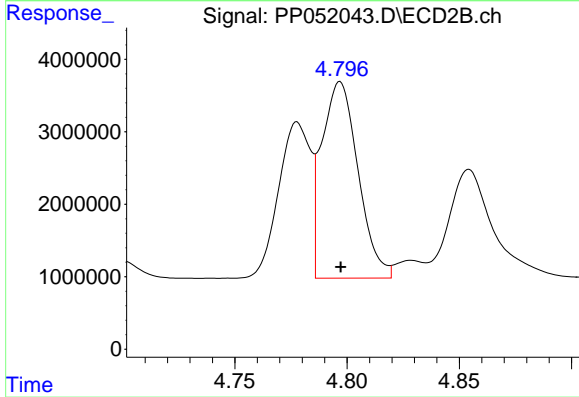
#3 AR-1016-1

R.T.: 4.778 min
 Delta R.T.: 0.000 min
 Response: 21367873
 Conc: 487.27 ng/ml



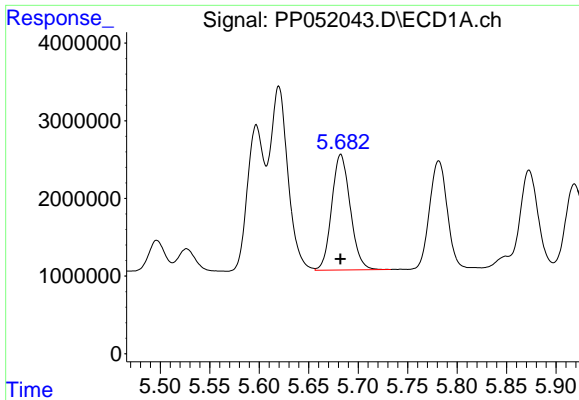
#4 AR-1016-2

R.T.: 5.620 min
 Delta R.T.: 0.000 min
 Response: 30009183
 Conc: 467.56 ng/ml



#4 AR-1016-2

R.T.: 4.797 min
 Delta R.T.: 0.000 min
 Response: 30553749
 Conc: 495.24 ng/ml

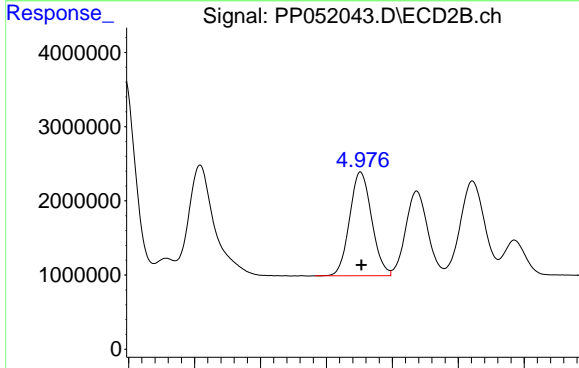


#5 AR-1016-3

R.T.: 5.682 min
 Delta R.T.: 0.000 min
 Response: 19457785
 Conc: 486.76 ng/ml

Instrument :
 ECD_P
 ClientSampleId :
 PB148115BS

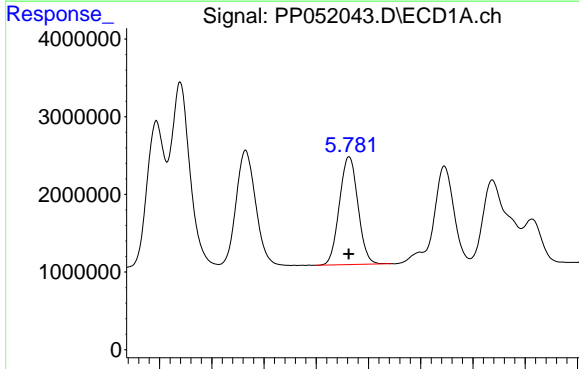
Time 5.50 5.55 5.60 5.65 5.70 5.75 5.80 5.85 5.90



#5 AR-1016-3

R.T.: 4.976 min
 Delta R.T.: 0.000 min
 Response: 16279163
 Conc: 495.44 ng/ml

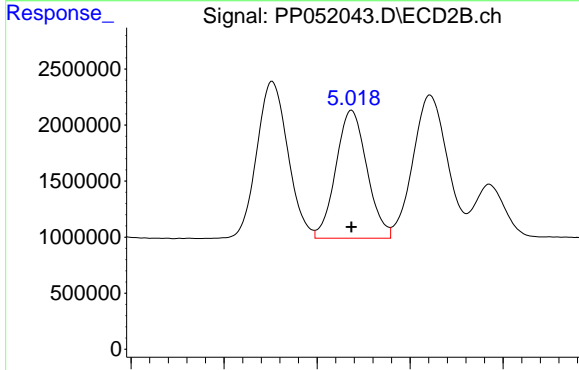
Time 4.80 4.85 4.90 4.95 5.00 5.05 5.10



#6 AR-1016-4

R.T.: 5.781 min
 Delta R.T.: 0.000 min
 Response: 17163475
 Conc: 489.58 ng/ml

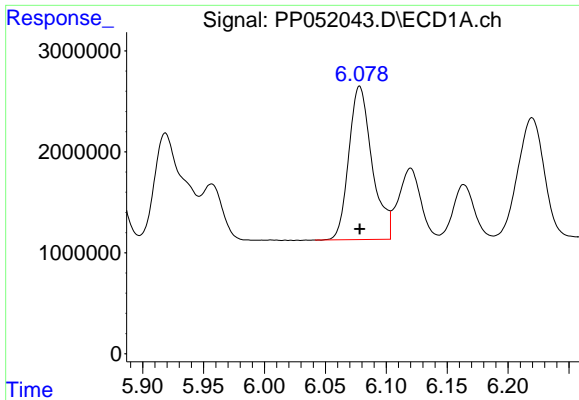
Time 5.60 5.65 5.70 5.75 5.80 5.85 5.90 5.95



#6 AR-1016-4

R.T.: 5.019 min
 Delta R.T.: 0.000 min
 Response: 13244373
 Conc: 512.11 ng/ml

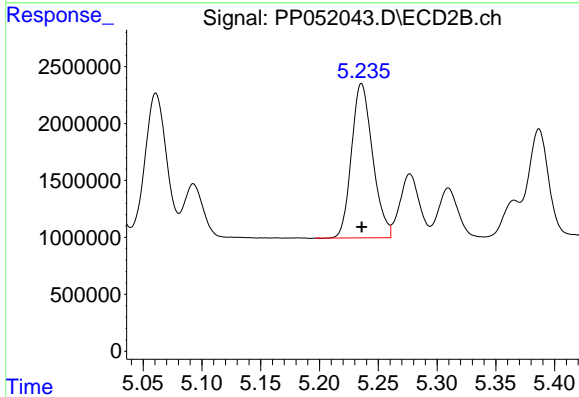
Time 4.90 4.95 5.00 5.05 5.10



#7 AR-1016-5

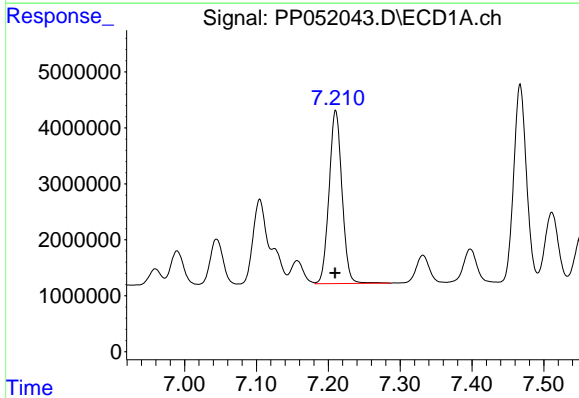
R.T.: 6.078 min
 Delta R.T.: 0.000 min
 Response: 20178222
 Conc: 488.60 ng/ml

Instrument :
 ECD_P
 ClientSampleId :
 PB148115BS



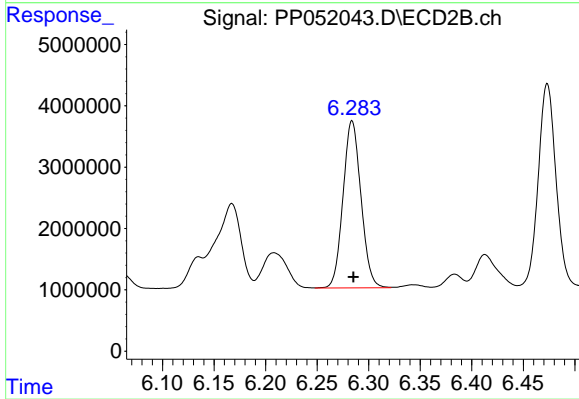
#7 AR-1016-5

R.T.: 5.236 min
 Delta R.T.: 0.000 min
 Response: 16947054
 Conc: 492.10 ng/ml



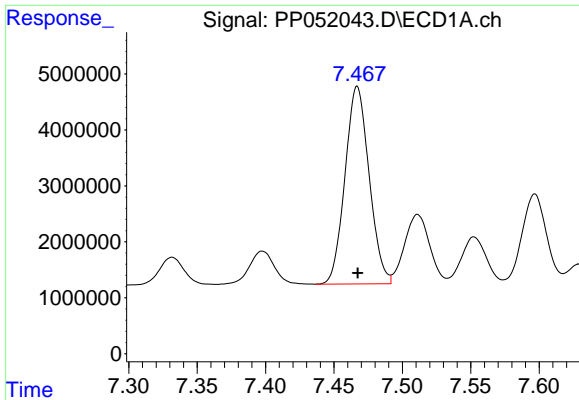
#31 AR-1260-1

R.T.: 7.210 min
 Delta R.T.: 0.000 min
 Response: 38708267
 Conc: 544.57 ng/ml



#31 AR-1260-1

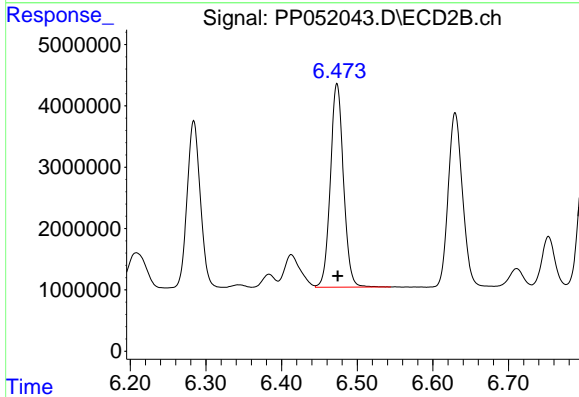
R.T.: 6.284 min
 Delta R.T.: -0.001 min
 Response: 32992733
 Conc: 478.99 ng/ml



#32 AR-1260-2

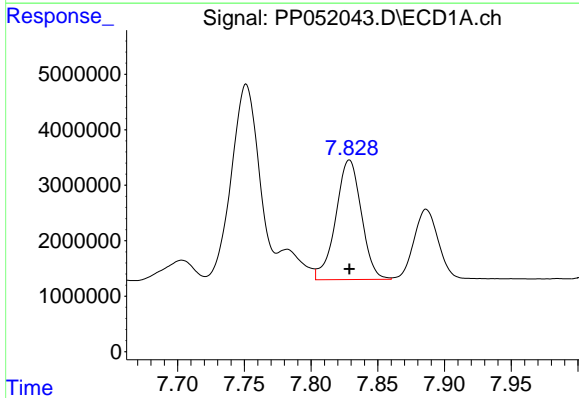
R.T.: 7.467 min
 Delta R.T.: 0.000 min
 Response: 43346245
 Conc: 530.71 ng/ml

Instrument :
 ECD_P
 ClientSampleId :
 PB148115BS



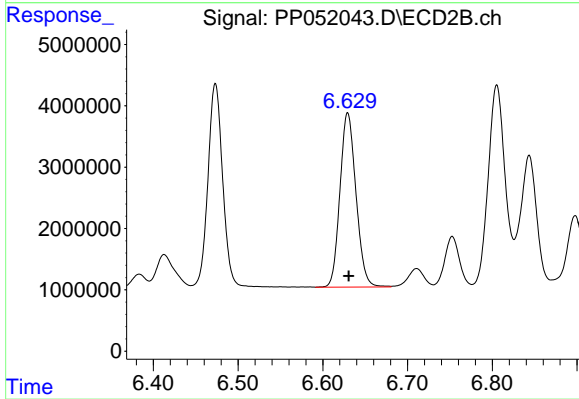
#32 AR-1260-2

R.T.: 6.473 min
 Delta R.T.: 0.000 min
 Response: 39990029
 Conc: 475.20 ng/ml



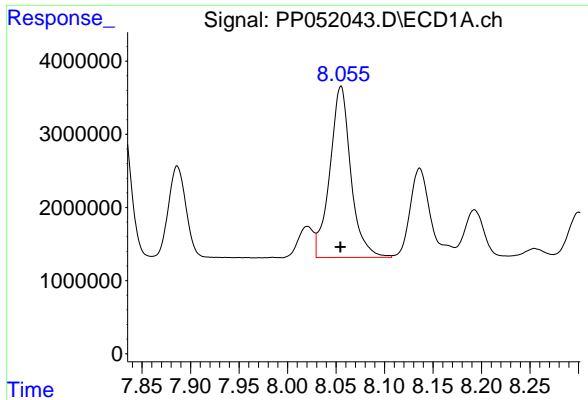
#33 AR-1260-3

R.T.: 7.829 min
 Delta R.T.: 0.000 min
 Response: 28795100
 Conc: 503.46 ng/ml



#33 AR-1260-3

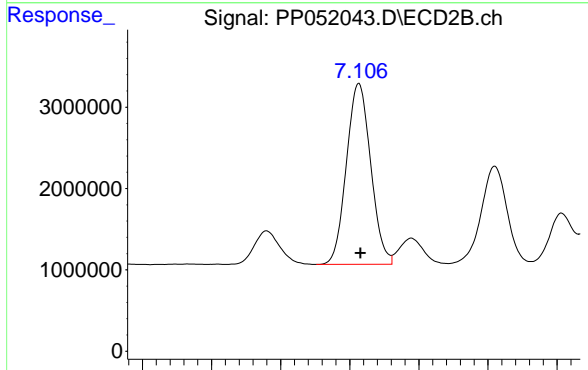
R.T.: 6.629 min
 Delta R.T.: -0.001 min
 Response: 37290182
 Conc: 479.04 ng/ml



#34 AR-1260-4

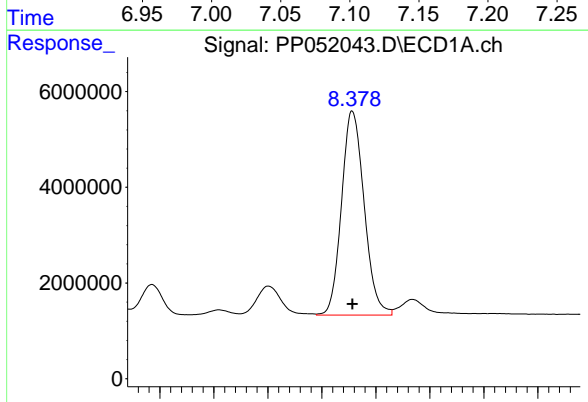
R.T.: 8.055 min
 Delta R.T.: 0.000 min
 Response: 35227346
 Conc: 537.87 ng/ml

Instrument :
 ECD_P
 ClientSampleId :
 PB148115BS



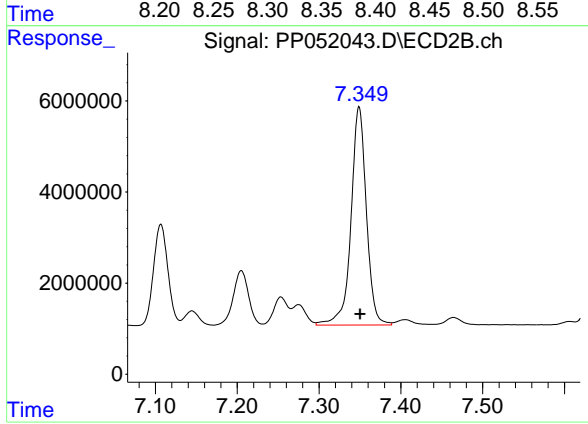
#34 AR-1260-4

R.T.: 7.107 min
 Delta R.T.: 0.000 min
 Response: 27175452
 Conc: 431.68 ng/ml



#35 AR-1260-5

R.T.: 8.378 min
 Delta R.T.: 0.000 min
 Response: 62118949
 Conc: 488.53 ng/ml



#35 AR-1260-5

R.T.: 7.349 min
 Delta R.T.: -0.001 min
 Response: 62720794
 Conc: 427.65 ng/ml