

Data Path : Z:\pestpcbsrv\HPCHEM1\ECD_P\Data\PP100622\
 Data File : PP052063.D
 Signal(s) : Signal #1: ECD1A.ch Signal #2: ECD2B.ch
 Acq On : 06 Oct 2022 16:34
 Operator : YP\AJ
 Sample : N5008-02
 Misc :
 ALS Vial : 13 Sample Multiplier: 1

Instrument :
 ECD_P
 ClientSampleId :
 COMP-2

Integration File signal 1: autoint1.e
 Integration File signal 2: autoint2.e
 Quant Time: Oct 06 17:11:04 2022
 Quant Method : Z:\pestpcbsrv\HPCHEM1\ECD_P\methods\PP100322.M
 Quant Title : GC EXTRACTABLES
 QLast Update : Tue Oct 04 12:08:14 2022
 Response via : Initial Calibration
 Integrator: ChemStation

Volume Inj. : 2 µl
 Signal #1 Phase : ZB-MR1 Signal #2 Phase: ZB-MR2
 Signal #1 Info : 30Mx0.32mmx 0.50µ Signal #2 Info : 30M x 0.32mm x 0.25µm

Compound	RT#1	RT#2	Resp#1	Resp#2	ng/ml	ng/ml

System Monitoring Compounds						
1) SA Tetrachlo...	4.427	3.679	29669771	20282897	16.600	15.954
2) SA Decachlor...	10.247	8.775	30785844	22028656	25.395	18.651 #

Target Compounds

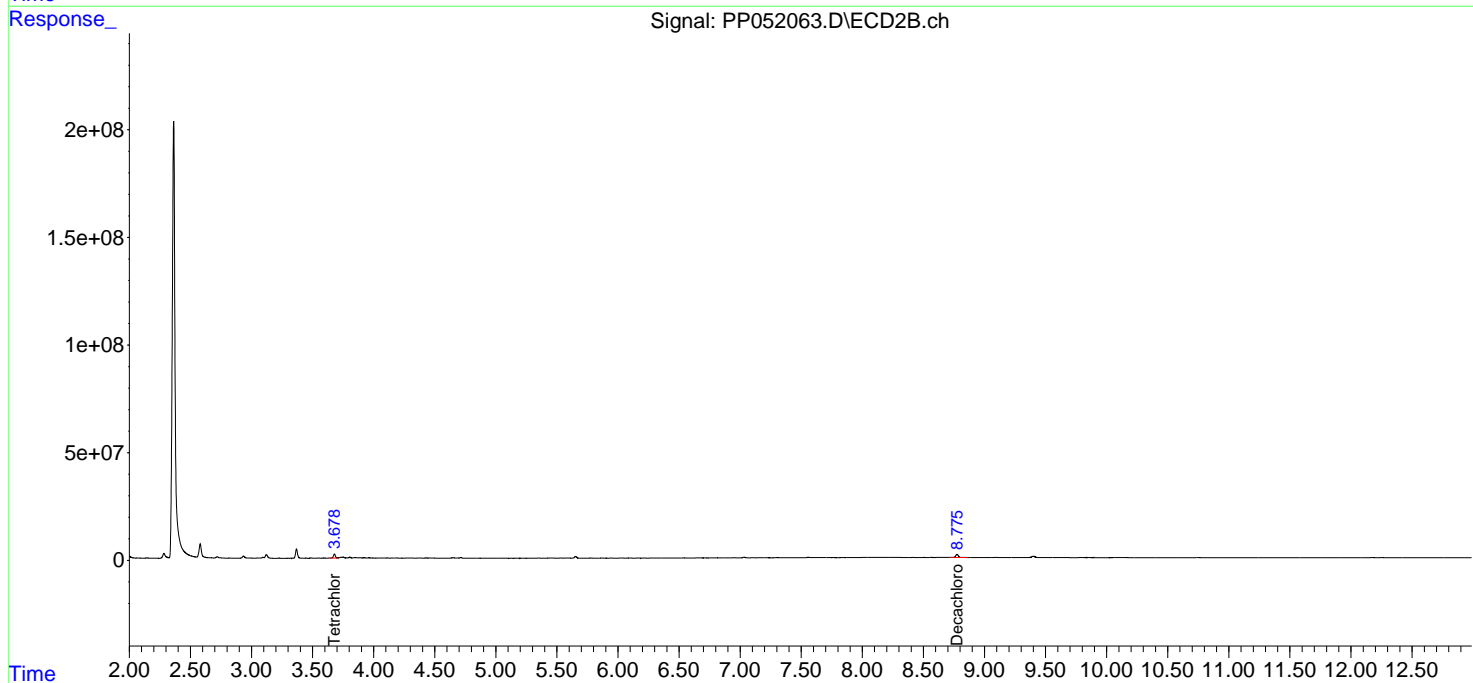
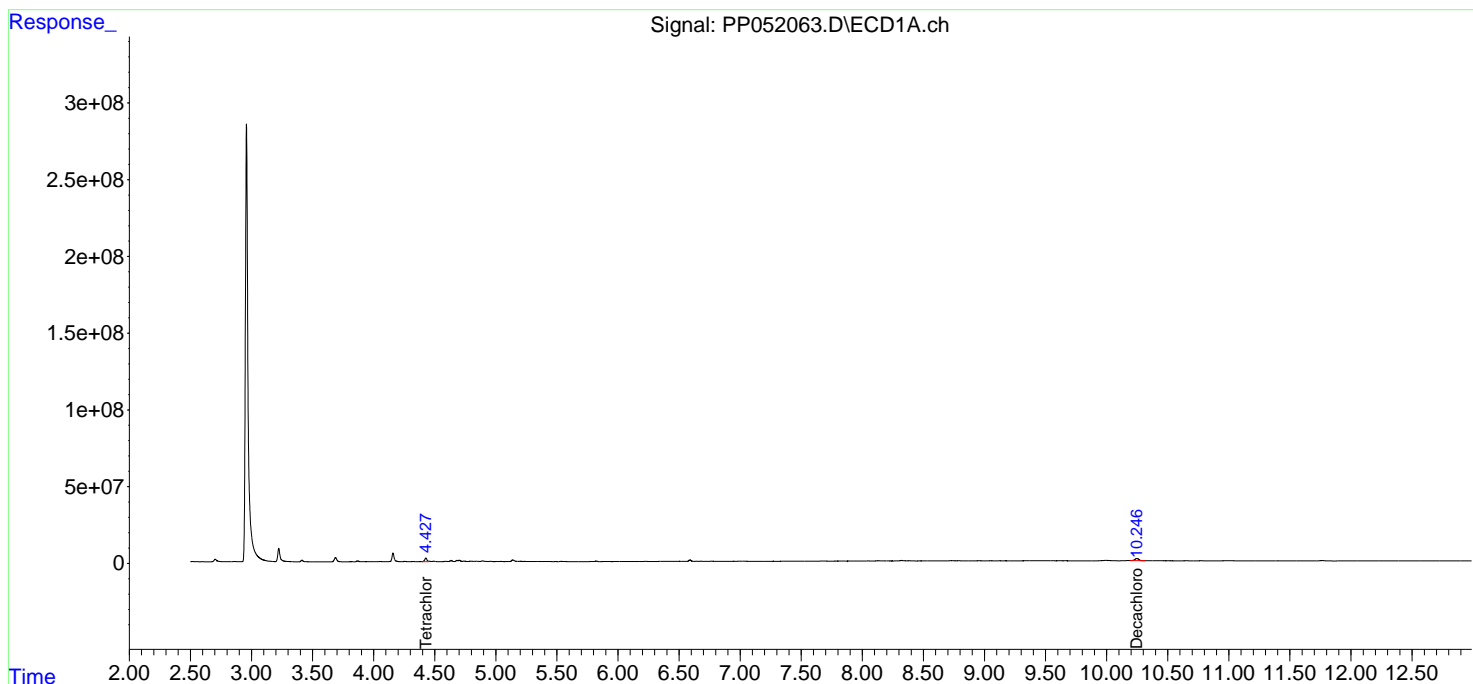
(f)=RT Delta > 1/2 Window (#)=Amounts differ by > 25% (m)=manual int.

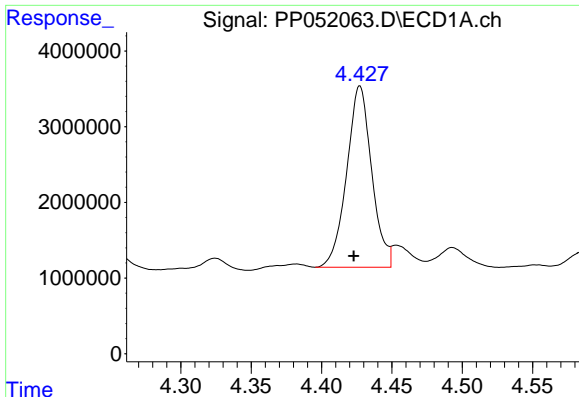
Data Path : Z:\pestpcbsrv\HPCHEM1\ECD_P\Data\PP100622\
 Data File : PP052063.D
 Signal(s) : Signal #1: ECD1A.ch Signal #2: ECD2B.ch
 Acq On : 06 Oct 2022 16:34
 Operator : YP\AJ
 Sample : N5008-02
 Misc :
 ALS Vial : 13 Sample Multiplier: 1

Instrument :
 ECD_P
 ClientSampleId :
 COMP-2

Integration File signal 1: autoint1.e
 Integration File signal 2: autoint2.e
 Quant Time: Oct 06 17:11:04 2022
 Quant Method : Z:\pestpcbsrv\HPCHEM1\ECD_P\methods\PP100322.M
 Quant Title : GC EXTRACTABLES
 QLast Update : Tue Oct 04 12:08:14 2022
 Response via : Initial Calibration
 Integrator: ChemStation

Volume Inj. : 2 µl
 Signal #1 Phase : ZB-MR1 Signal #2 Phase: ZB-MR2
 Signal #1 Info : 30Mx0.32mmx 0.50µ Signal #2 Info : 30M x 0.32mm x 0.25µm

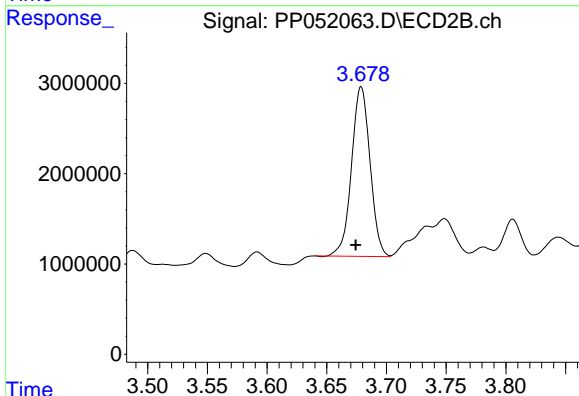




#1 Tetrachloro-m-xylene

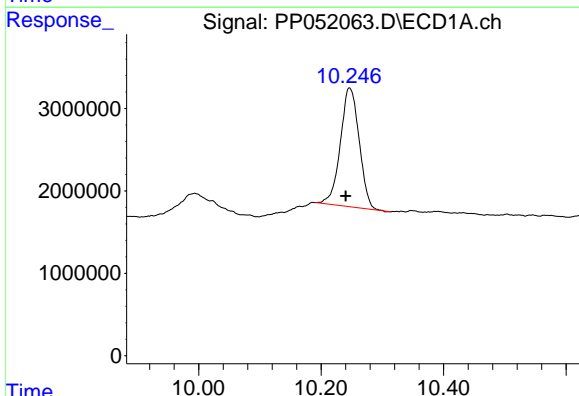
R.T.: 4.427 min
 Delta R.T.: 0.004 min
 Response: 29669771
 Conc: 16.60 ng/ml

Instrument :
 ECD_P
 ClientSampleId :
 COMP-2



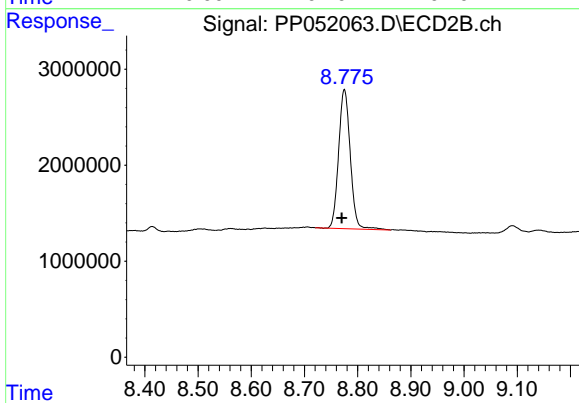
#1 Tetrachloro-m-xylene

R.T.: 3.679 min
 Delta R.T.: 0.005 min
 Response: 20282897
 Conc: 15.95 ng/ml



#2 Decachlorobiphenyl

R.T.: 10.247 min
 Delta R.T.: 0.006 min
 Response: 30785844
 Conc: 25.39 ng/ml



#2 Decachlorobiphenyl

R.T.: 8.775 min
 Delta R.T.: 0.005 min
 Response: 22028656
 Conc: 18.65 ng/ml