

Data Path : Z:\pestpcbsrv\HPCHEM1\ECD_P\Data\PP100623\
 Data File : PP060680.D
 Signal(s) : Signal #1: ECD1A.ch Signal #2: ECD2B.ch
 Acq On : 06 Oct 2023 10:10
 Operator : YP\AJ
 Sample : 04730-11DL 2X
 Misc :
 ALS Vial : 8 Sample Multiplier: 1

Instrument :
 ECD_P
ClientSampleId :
 K242-42ADL

Manual Integrations
APPROVED

Reviewed By :Yogesh Patel 10/09/2023
 Supervised By :Ankita Jodhani 10/09/2023

Integration File signal 1: autoint1.e
 Integration File signal 2: autoint2.e
 Quant Time: Oct 06 12:27:05 2023
 Quant Method : Z:\pestpcbsrv\HPCHEM1\ECD_P\methods\PP092623.M
 Quant Title : GC EXTRACTABLES
 QLast Update : Wed Sep 27 11:30:16 2023
 Response via : Initial Calibration
 Integrator: ChemStation

Volume Inj. : 2 µl
 Signal #1 Phase : ZB-MR1 Signal #2 Phase: ZB-MR2
 Signal #1 Info : 30Mx0.32mmx 0.50µ Signal #2 Info : 30M x 0.32mm x 0.25µm

Compound	RT#1	RT#2	Resp#1	Resp#2	ng/ml	ng/ml

System Monitoring Compounds						
1) SA Tetrachlo...	4.531	3.683	14741042	9694020	6.582	6.513
2) SA Decachlor...	10.460	8.747	6703982	5862299	3.797	3.594
Target Compounds						
26) L6 AR-1254-1	6.587	5.591	26873042	26410588	314.893	266.993
27) L6 AR-1254-2	6.807	5.739	57820466	36859441	453.045	428.883
28) L6 AR-1254-3	7.178	6.146	76672036	75068597	576.845	523.759
29) L6 AR-1254-4	7.466	6.376	62297266	48358617	633.494	554.806
30) L6 AR-1254-5	7.896	6.796	100.7E6	248.4E6	929.195m	1960.458m#

(f)=RT Delta > 1/2 Window (#)=Amounts differ by > 25% (m)=manual int.

Data Path : Z:\pestpcbsrv\HPCHEM1\ECD_P\Data\PP100623\
 Data File : PP060680.D
 Signal(s) : Signal #1: ECD1A.ch Signal #2: ECD2B.ch
 Acq On : 06 Oct 2023 10:10
 Operator : YP\AJ
 Sample : 04730-11DL 2X
 Misc :
 ALS Vial : 8 Sample Multiplier: 1

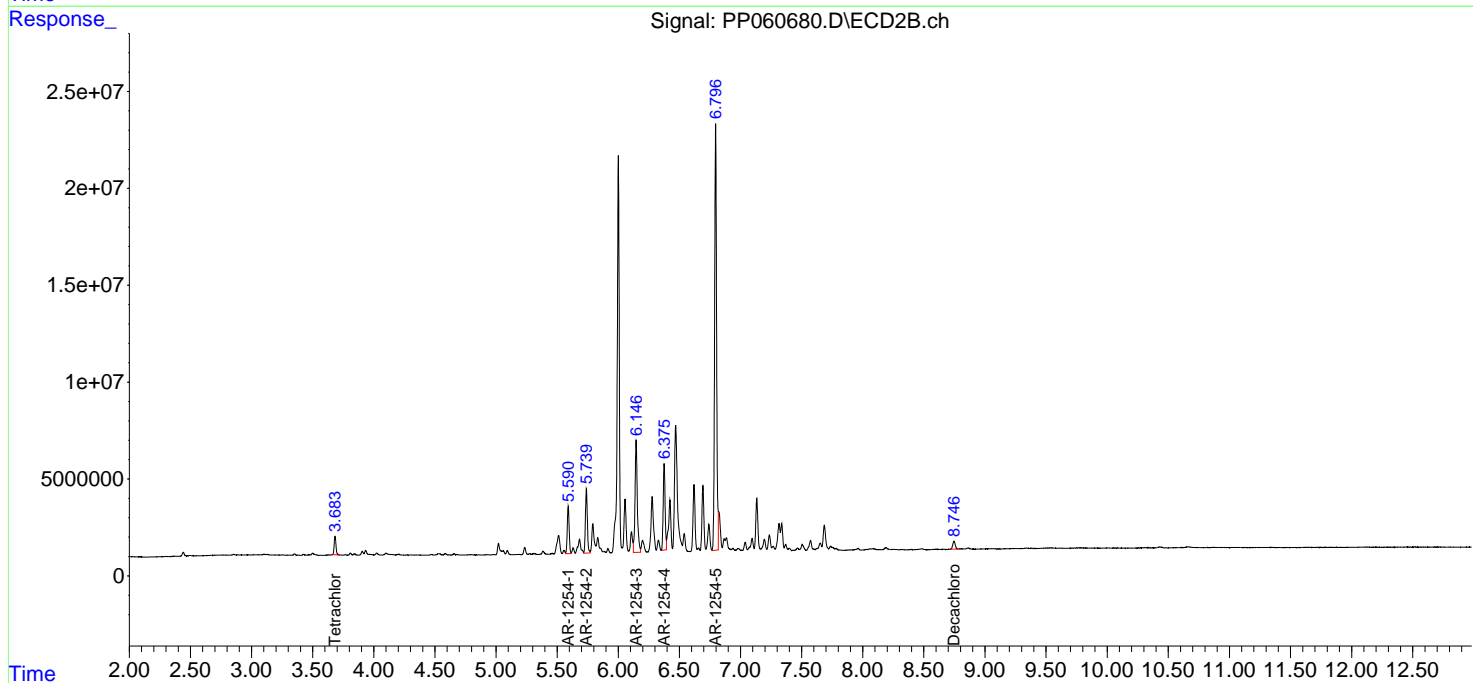
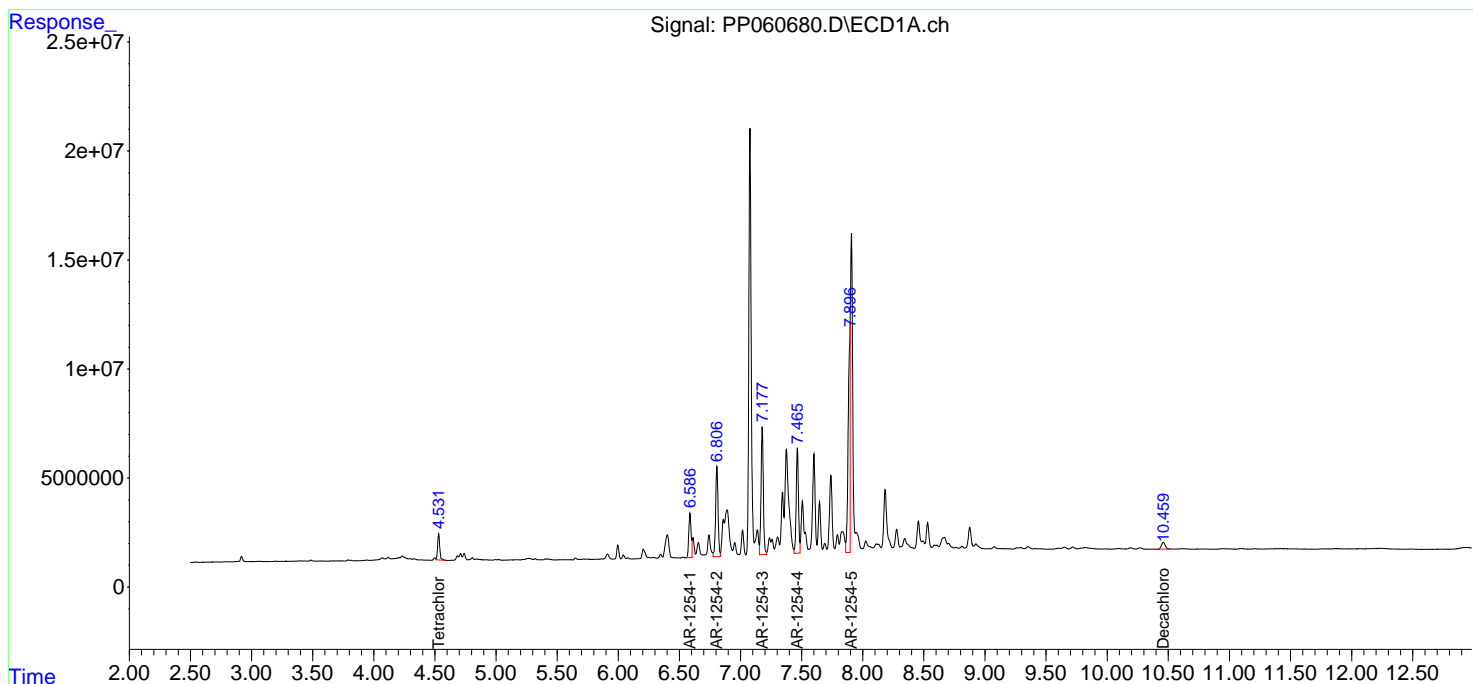
Instrument :
 ECD_P
ClientSampleId :
 K242-42ADL

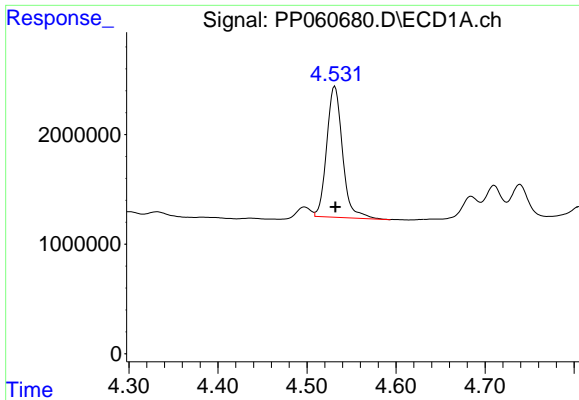
Manual Integrations
APPROVED

Reviewed By :Yogesh Patel 10/09/2023
 Supervised By :Ankita Jodhani 10/09/2023

Integration File signal 1: autoint1.e
 Integration File signal 2: autoint2.e
 Quant Time: Oct 06 12:27:05 2023
 Quant Method : Z:\pestpcbsrv\HPCHEM1\ECD_P\methods\PP092623.M
 Quant Title : GC EXTRACTABLES
 QLast Update : Wed Sep 27 11:30:16 2023
 Response via : Initial Calibration
 Integrator: ChemStation

Volume Inj. : 2 µl
 Signal #1 Phase : ZB-MR1 Signal #2 Phase: ZB-MR2
 Signal #1 Info : 30Mx0.32mmx 0.50µ Signal #2 Info : 30M x 0.32mm x 0.25µm

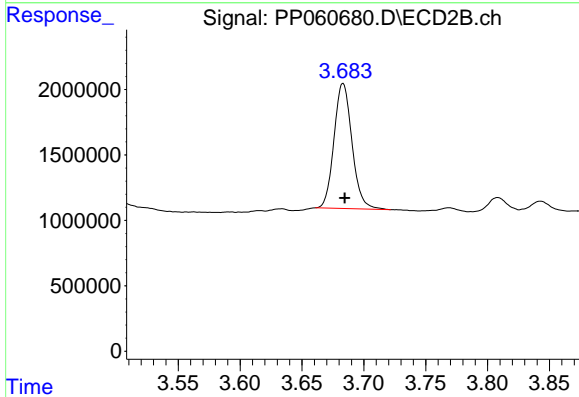




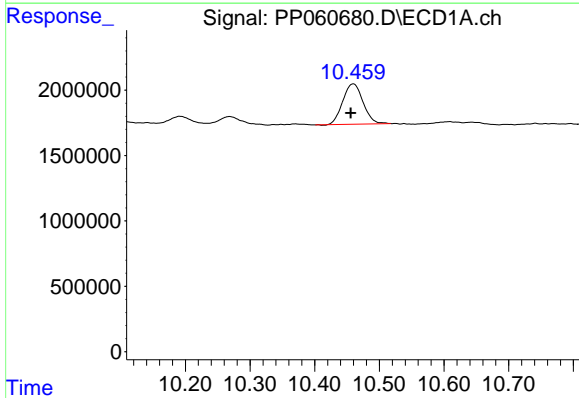
#1 Tetrachloro-m-xylene
 R.T.: 4.531 min
 Delta R.T.: 0.000 min
 Response: 14741042
 Conc: 6.58 ng/ml

Instrument : ECD_P
 ClientSampleId : K242-42ADL

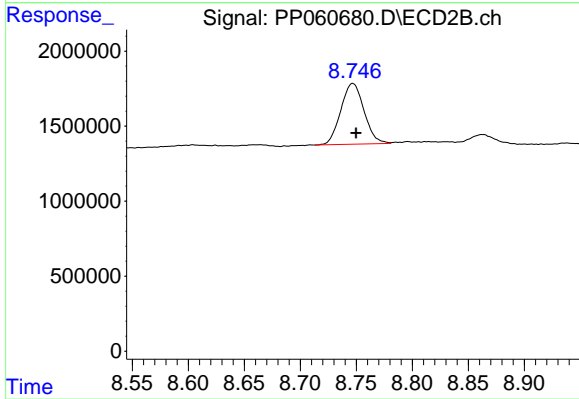
Manual Integrations
APPROVED
 Reviewed By :Yogesh Patel 10/09/2023
 Supervised By :Ankita Jodhani 10/09/2023



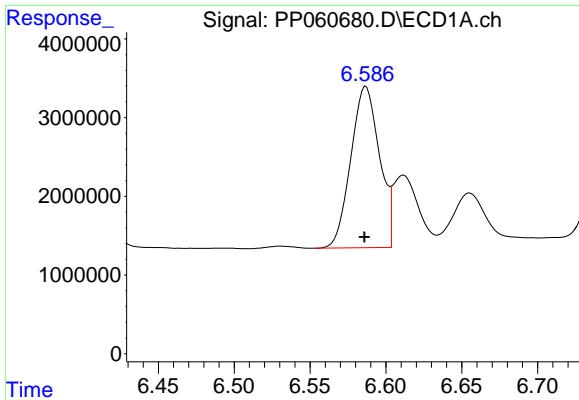
#1 Tetrachloro-m-xylene
 R.T.: 3.683 min
 Delta R.T.: -0.002 min
 Response: 9694020
 Conc: 6.51 ng/ml



#2 Decachlorobiphenyl
 R.T.: 10.460 min
 Delta R.T.: 0.004 min
 Response: 6703982
 Conc: 3.80 ng/ml



#2 Decachlorobiphenyl
 R.T.: 8.747 min
 Delta R.T.: -0.003 min
 Response: 5862299
 Conc: 3.59 ng/ml



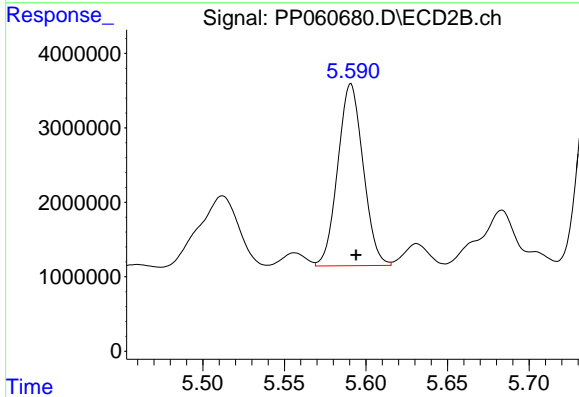
#26 AR-1254-1

R.T.: 6.587 min
 Delta R.T.: 0.001 min
 Response: 26873042
 Conc: 314.89 ng/ml

Instrument :
 ECD_P
 ClientSampleId :
 K242-42ADL

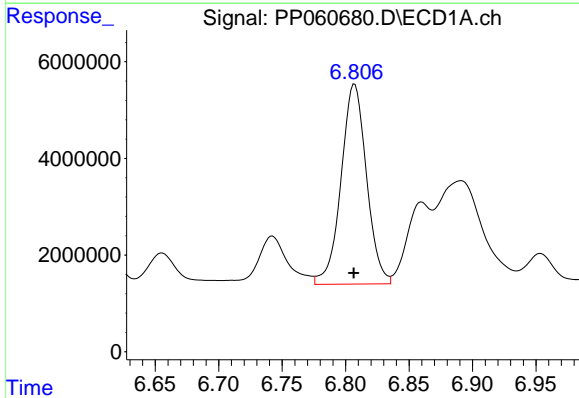
Manual Integrations
 APPROVED

Reviewed By :Yogesh Patel 10/09/2023
 Supervised By :Ankita Jodhani 10/09/2023



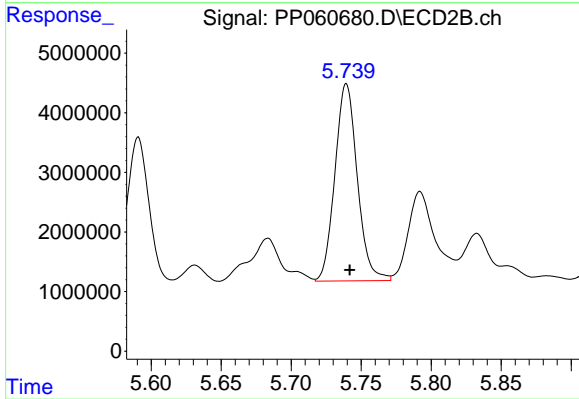
#26 AR-1254-1

R.T.: 5.591 min
 Delta R.T.: -0.003 min
 Response: 26410588
 Conc: 266.99 ng/ml



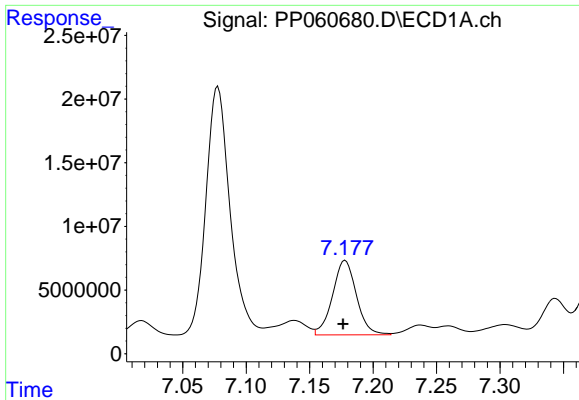
#27 AR-1254-2

R.T.: 6.807 min
 Delta R.T.: 0.000 min
 Response: 57820466
 Conc: 453.04 ng/ml



#27 AR-1254-2

R.T.: 5.739 min
 Delta R.T.: -0.003 min
 Response: 36859441
 Conc: 428.88 ng/ml



#28 AR-1254-3

R.T.: 7.178 min
 Delta R.T.: 0.002 min
 Response: 76672036
 Conc: 576.84 ng/ml

Instrument :

ECD_P

ClientSampleId :

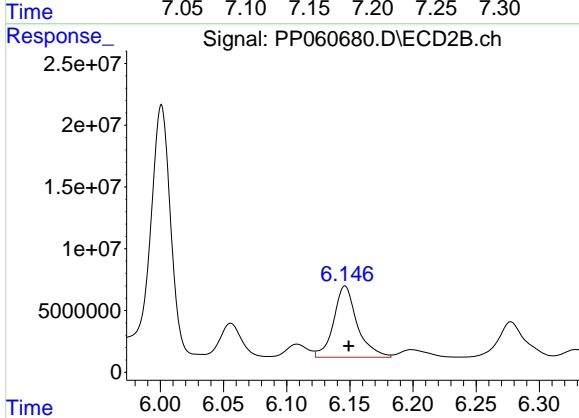
K242-42ADL

Manual Integrations

APPROVED

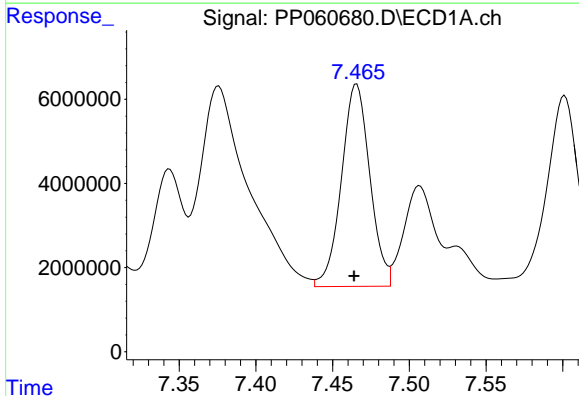
Reviewed By :Yogesh Patel 10/09/2023

Supervised By :Ankita Jodhani 10/09/2023



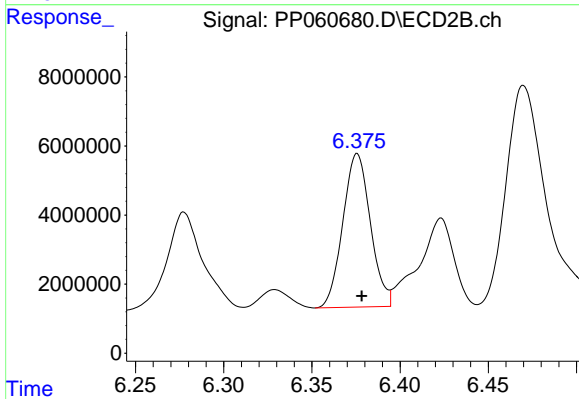
#28 AR-1254-3

R.T.: 6.146 min
 Delta R.T.: -0.003 min
 Response: 75068597
 Conc: 523.76 ng/ml



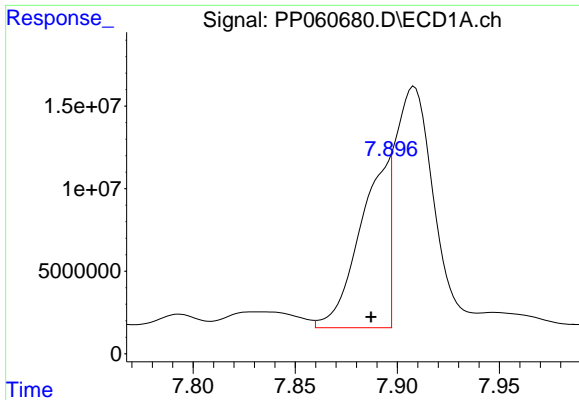
#29 AR-1254-4

R.T.: 7.466 min
 Delta R.T.: 0.002 min
 Response: 62297266
 Conc: 633.49 ng/ml



#29 AR-1254-4

R.T.: 6.376 min
 Delta R.T.: -0.002 min
 Response: 48358617
 Conc: 554.81 ng/ml



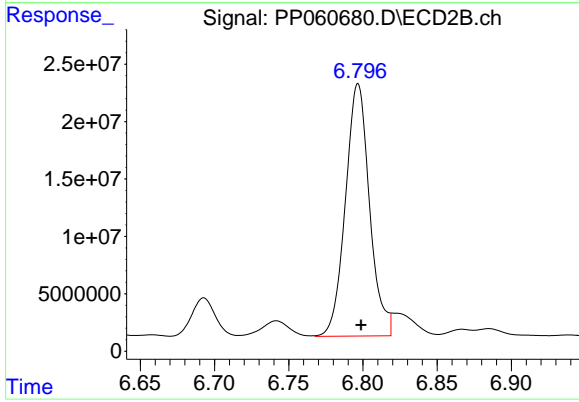
#30 AR-1254-5

R.T.: 7.896 min
 Delta R.T.: 0.009 min
 Response: 100671979
 Conc: 929.20 ng/ml

Instrument :
 ECD_P
 ClientSampleId :
 K242-42ADL

Manual Integrations
 APPROVED

Reviewed By :Yogesh Patel 10/09/2023
 Supervised By :Ankita Jodhani 10/09/2023



#30 AR-1254-5

R.T.: 6.796 min
 Delta R.T.: -0.002 min
 Response: 248429606
 Conc: 1960.46 ng/ml m