

Data Path : Z:\pestpcbsrv\HPCHEM1\ECD_P\Data\PP100623\
 Data File : PP060689.D
 Signal(s) : Signal #1: ECD1A.ch Signal #2: ECD2B.ch
 Acq On : 06 Oct 2023 13:54
 Operator : YP\AJ
 Sample : 04609-03MS
 Misc :
 ALS Vial : 12 Sample Multiplier: 1

Instrument :
 ECD_P
ClientSampleId :
 TP-2MS

Manual Integrations
APPROVED
 Reviewed By :Yogesh Patel 10/09/2023
 Supervised By :Ankita Jodhani 10/09/2023

Integration File signal 1: autoint1.e
 Integration File signal 2: autoint2.e
 Quant Time: Oct 06 15:01:47 2023
 Quant Method : Z:\pestpcbsrv\HPCHEM1\ECD_P\methods\PP092623.M
 Quant Title : GC EXTRACTABLES
 QLast Update : Wed Sep 27 11:30:16 2023
 Response via : Initial Calibration
 Integrator: ChemStation

Volume Inj. : 2 µl
 Signal #1 Phase : ZB-MR1 Signal #2 Phase: ZB-MR2
 Signal #1 Info : 30Mx0.32mmx 0.50µ Signal #2 Info : 30M x 0.32mm x 0.25µm

Compound	RT#1	RT#2	Resp#1	Resp#2	ng/ml	ng/ml

System Monitoring Compounds						
1) SA Tetrachlo...	4.532	3.684	49058178	31256886	21.906	20.999
2) SA Decachlor...	10.461	8.746	34417152	28014154	19.494	17.174m
Target Compounds						
3) L1 AR-1016-1	5.720	4.781	39015882	30337903	530.073	522.080
4) L1 AR-1016-2	5.742	4.800	55298127	39386726	527.991	489.243
5) L1 AR-1016-3	5.806	4.978	34084293	22180983	521.515	496.301
6) L1 AR-1016-4	5.906	5.020	28240554	17728245	519.324	492.674
7) L1 AR-1016-5	6.205	5.235	28078996	18630755	504.812	383.428
31) L7 AR-1260-1	7.344	6.277	52642096	44521907	502.191	443.554
32) L7 AR-1260-2	7.603	6.465	57630857	51387323	476.658	430.724
33) L7 AR-1260-3	7.965	6.620	42796171	48511322	461.712	423.700
34) L7 AR-1260-4	8.196	7.095	51838212	35591060	488.805	373.927
35) L7 AR-1260-5	8.531	7.337	82788441	83984210	427.801	387.535

(f)=RT Delta > 1/2 Window (#)=Amounts differ by > 25% (m)=manual int.

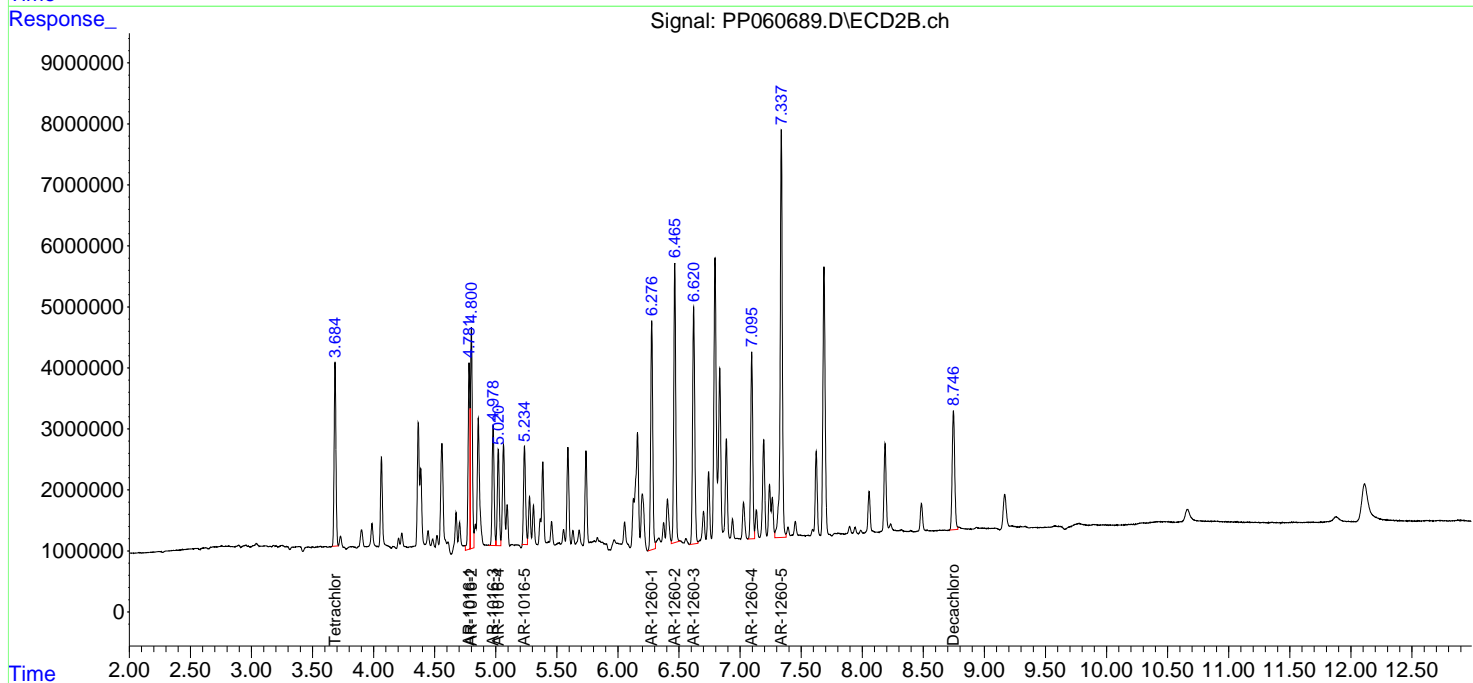
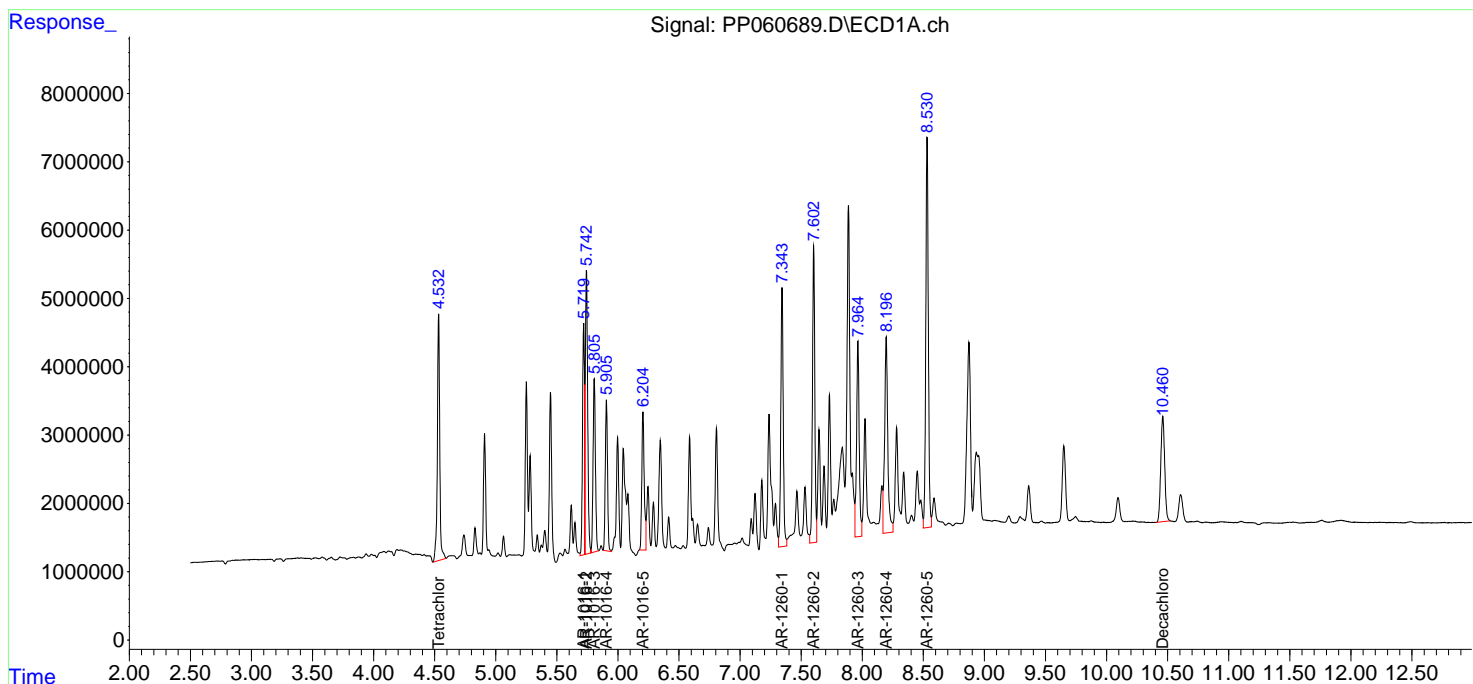
Data Path : Z:\pestpcbsrv\HPCHEM1\ECD_P\Data\PP100623\
 Data File : PP060689.D
 Signal(s) : Signal #1: ECD1A.ch Signal #2: ECD2B.ch
 Acq On : 06 Oct 2023 13:54
 Operator : YP\AJ
 Sample : 04609-03MS
 Misc :
 ALS Vial : 12 Sample Multiplier: 1

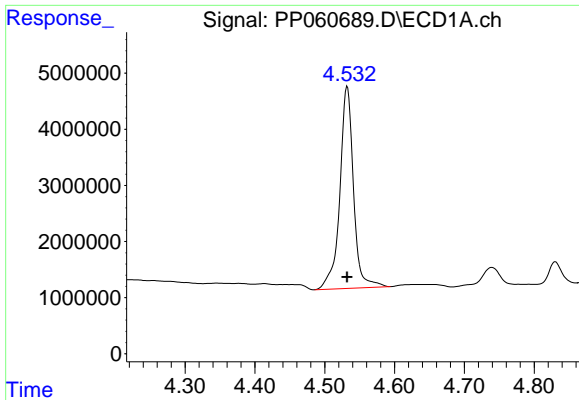
Instrument :
 ECD_P
ClientSampleId :
 TP-2MS

Manual Integrations
APPROVED
 Reviewed By :Yogesh Patel 10/09/2023
 Supervised By :Ankita Jodhani 10/09/2023

Integration File signal 1: autoint1.e
 Integration File signal 2: autoint2.e
 Quant Time: Oct 06 15:01:47 2023
 Quant Method : Z:\pestpcbsrv\HPCHEM1\ECD_P\methods\PP092623.M
 Quant Title : GC EXTRACTABLES
 QLast Update : Wed Sep 27 11:30:16 2023
 Response via : Initial Calibration
 Integrator: ChemStation

Volume Inj. : 2 µl
 Signal #1 Phase : ZB-MR1 Signal #2 Phase: ZB-MR2
 Signal #1 Info : 30Mx0.32mmx 0.50µ Signal #2 Info : 30M x 0.32mm x 0.25µm



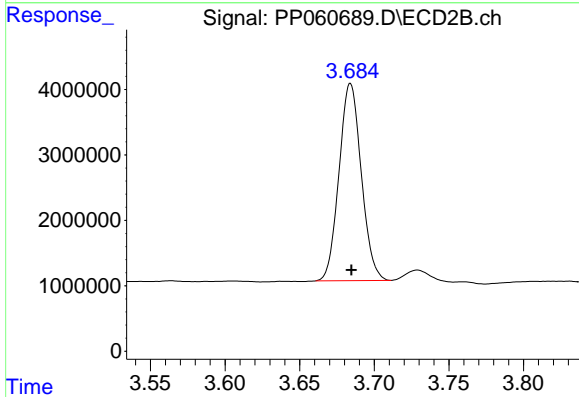


#1 Tetrachloro-m-xylene
 R.T.: 4.532 min
 Delta R.T.: 0.000 min
 Response: 49058178
 Conc: 21.91 ng/ml

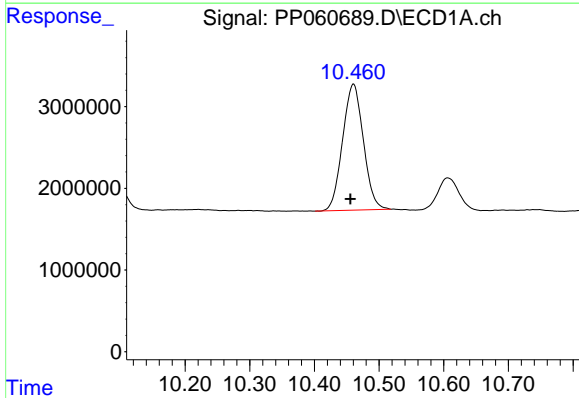
Instrument :
 ECD_P
 ClientSampleId :
 TP-2MS

Manual Integrations
APPROVED

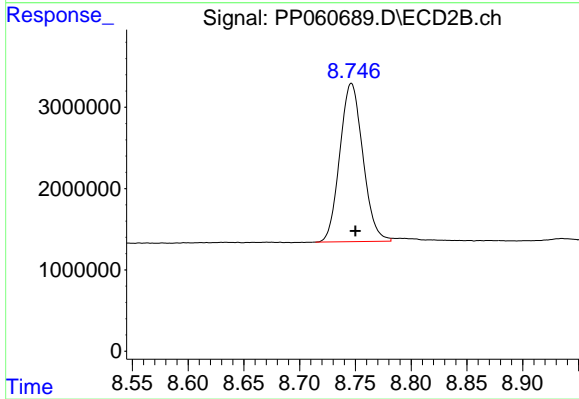
Reviewed By :Yogesh Patel 10/09/2023
 Supervised By :Ankita Jodhani 10/09/2023



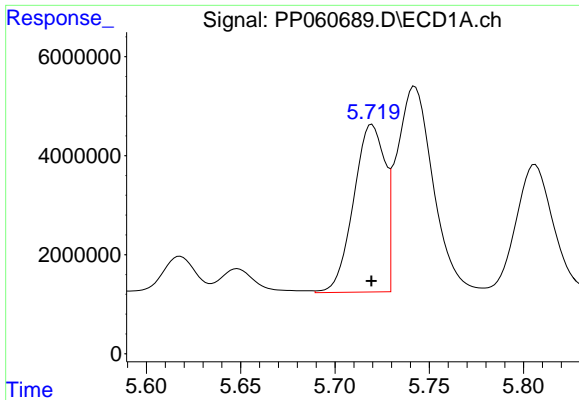
#1 Tetrachloro-m-xylene
 R.T.: 3.684 min
 Delta R.T.: 0.000 min
 Response: 31256886
 Conc: 21.00 ng/ml



#2 Decachlorobiphenyl
 R.T.: 10.461 min
 Delta R.T.: 0.005 min
 Response: 34417152
 Conc: 19.49 ng/ml



#2 Decachlorobiphenyl
 R.T.: 8.746 min
 Delta R.T.: -0.004 min
 Response: 28014154
 Conc: 17.17 ng/ml m



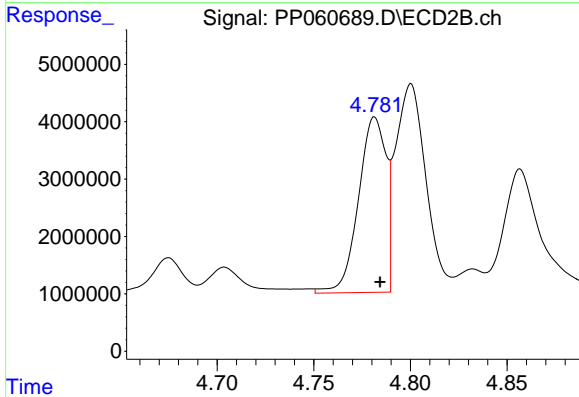
#3 AR-1016-1

R.T.: 5.720 min
 Delta R.T.: 0.000 min
 Response: 39015882
 Conc: 530.07 ng/ml

Instrument :
 ECD_P
 ClientSampleId :
 TP-2MS

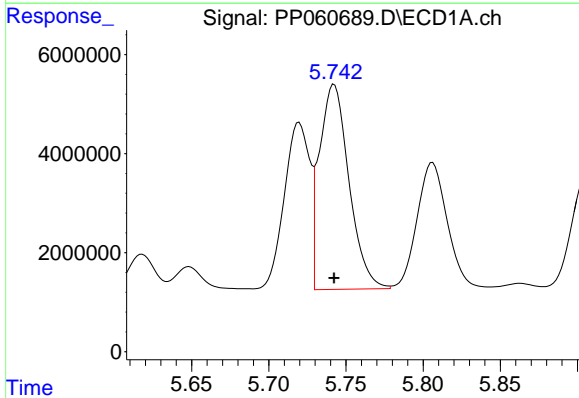
Manual Integrations
 APPROVED

Reviewed By :Yogesh Patel 10/09/2023
 Supervised By :Ankita Jodhani 10/09/2023



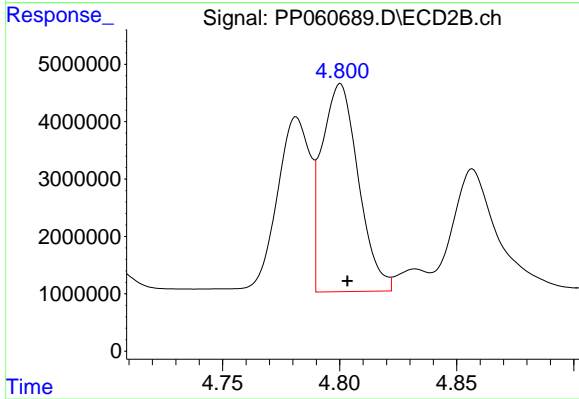
#3 AR-1016-1

R.T.: 4.781 min
 Delta R.T.: -0.003 min
 Response: 30337903
 Conc: 522.08 ng/ml



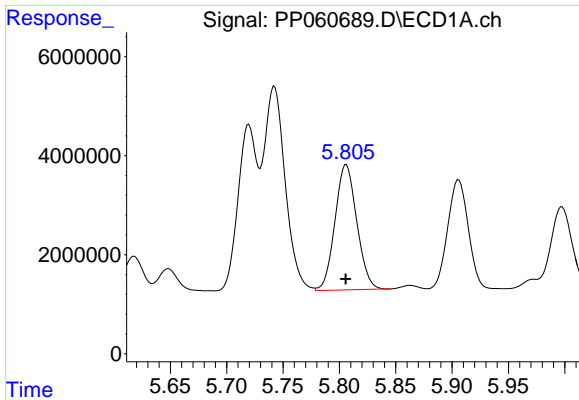
#4 AR-1016-2

R.T.: 5.742 min
 Delta R.T.: 0.000 min
 Response: 55298127
 Conc: 527.99 ng/ml



#4 AR-1016-2

R.T.: 4.800 min
 Delta R.T.: -0.003 min
 Response: 39386726
 Conc: 489.24 ng/ml



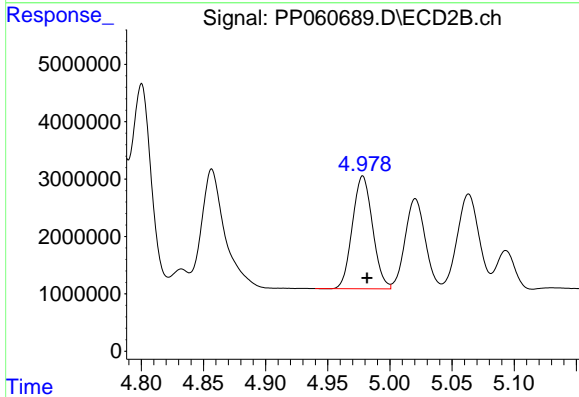
#5 AR-1016-3

R.T.: 5.806 min
 Delta R.T.: 0.000 min
 Response: 34084293
 Conc: 521.51 ng/ml

Instrument :
 ECD_P
 ClientSampleId :
 TP-2MS

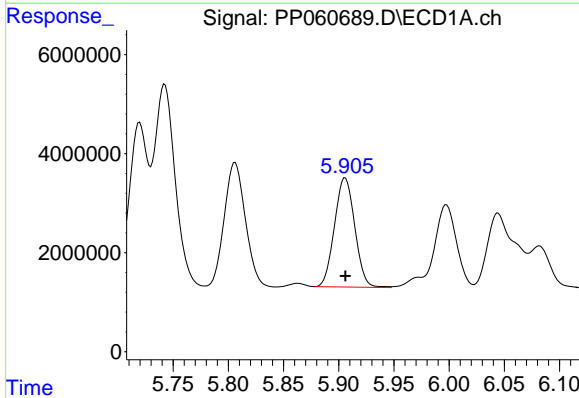
Manual Integrations
 APPROVED

Reviewed By :Yogesh Patel 10/09/2023
 Supervised By :Ankita Jodhani 10/09/2023



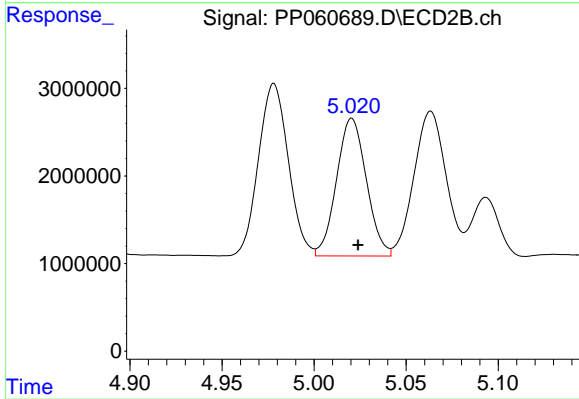
#5 AR-1016-3

R.T.: 4.978 min
 Delta R.T.: -0.003 min
 Response: 22180983
 Conc: 496.30 ng/ml



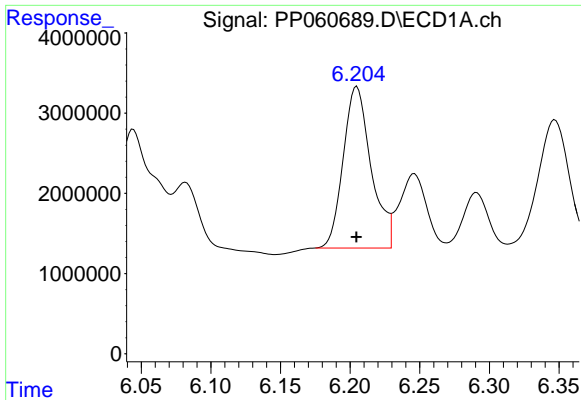
#6 AR-1016-4

R.T.: 5.906 min
 Delta R.T.: 0.000 min
 Response: 28240554
 Conc: 519.32 ng/ml



#6 AR-1016-4

R.T.: 5.020 min
 Delta R.T.: -0.003 min
 Response: 17728245
 Conc: 492.67 ng/ml



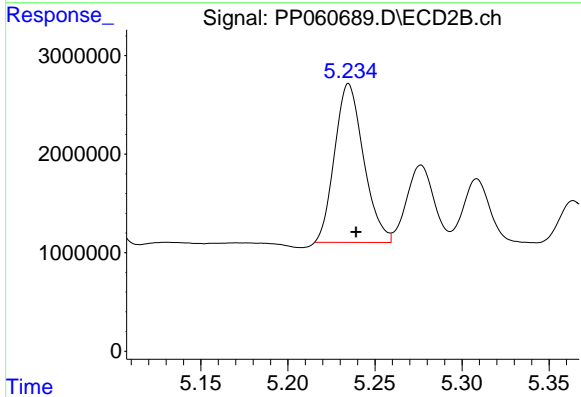
#7 AR-1016-5

R.T.: 6.205 min
 Delta R.T.: 0.000 min
 Response: 28078996
 Conc: 504.81 ng/ml

Instrument :
 ECD_P
 ClientSampleId :
 TP-2MS

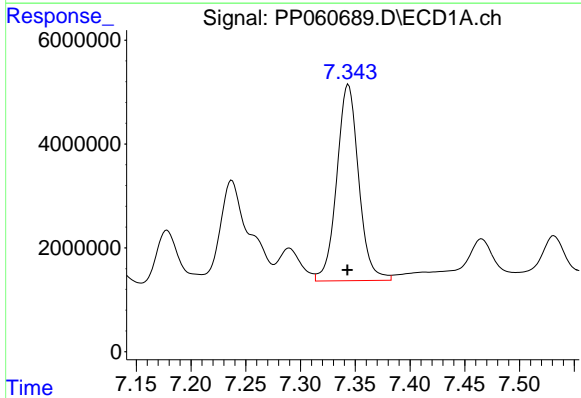
Manual Integrations
 APPROVED

Reviewed By :Yogesh Patel 10/09/2023
 Supervised By :Ankita Jodhani 10/09/2023



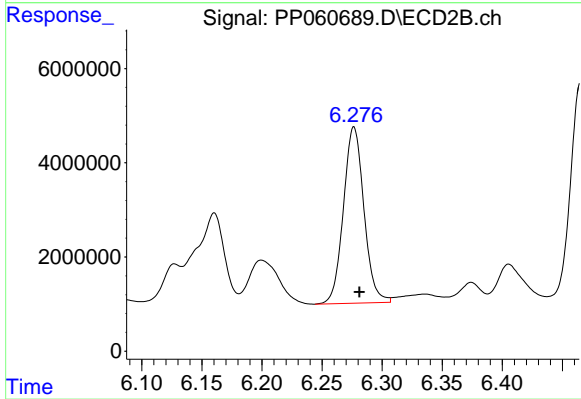
#7 AR-1016-5

R.T.: 5.235 min
 Delta R.T.: -0.004 min
 Response: 18630755
 Conc: 383.43 ng/ml



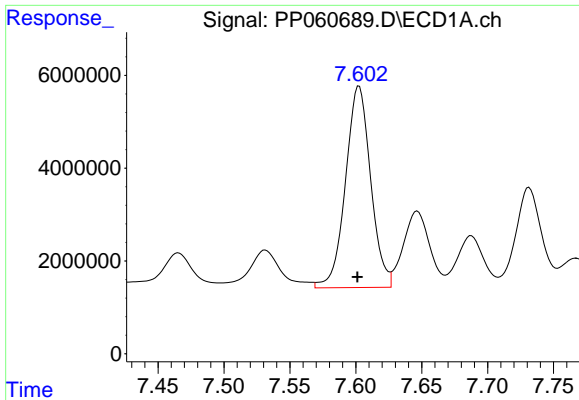
#31 AR-1260-1

R.T.: 7.344 min
 Delta R.T.: 0.000 min
 Response: 52642096
 Conc: 502.19 ng/ml



#31 AR-1260-1

R.T.: 6.277 min
 Delta R.T.: -0.004 min
 Response: 44521907
 Conc: 443.55 ng/ml



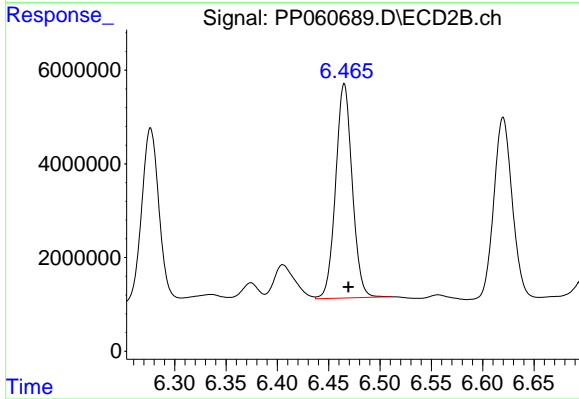
#32 AR-1260-2

R.T.: 7.603 min
 Delta R.T.: 0.001 min
 Response: 57630857
 Conc: 476.66 ng/ml

Instrument :
 ECD_P
 ClientSampleId :
 TP-2MS

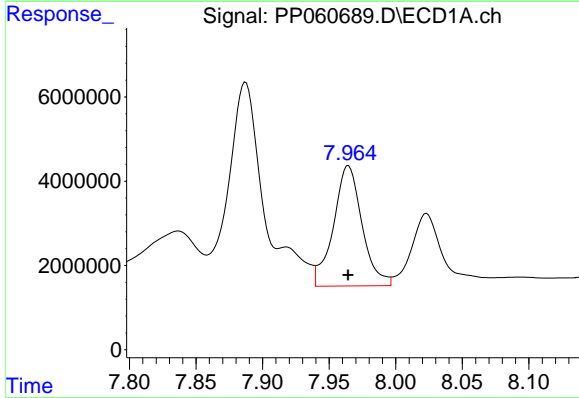
Manual Integrations
 APPROVED

Reviewed By :Yogesh Patel 10/09/2023
 Supervised By :Ankita Jodhani 10/09/2023



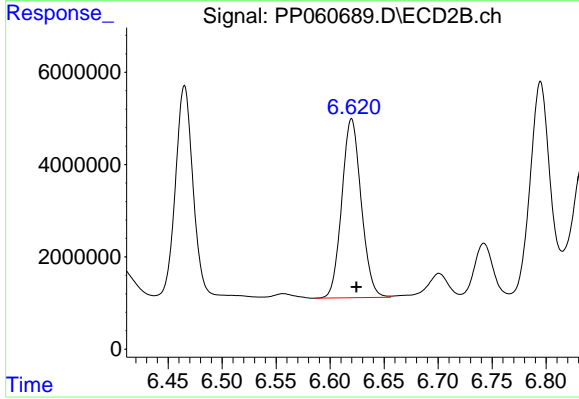
#32 AR-1260-2

R.T.: 6.465 min
 Delta R.T.: -0.004 min
 Response: 51387323
 Conc: 430.72 ng/ml



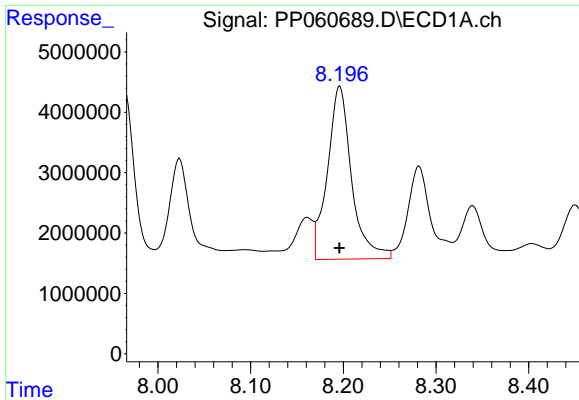
#33 AR-1260-3

R.T.: 7.965 min
 Delta R.T.: 0.000 min
 Response: 42796171
 Conc: 461.71 ng/ml



#33 AR-1260-3

R.T.: 6.620 min
 Delta R.T.: -0.004 min
 Response: 48511322
 Conc: 423.70 ng/ml



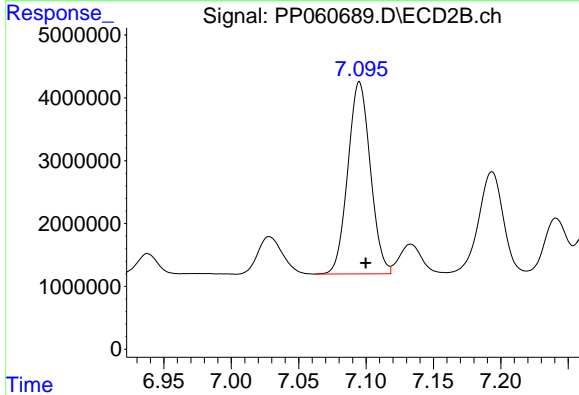
#34 AR-1260-4

R.T.: 8.196 min
 Delta R.T.: 0.000 min
 Response: 51838212
 Conc: 488.81 ng/ml

Instrument :
 ECD_P
 ClientSampleId :
 TP-2MS

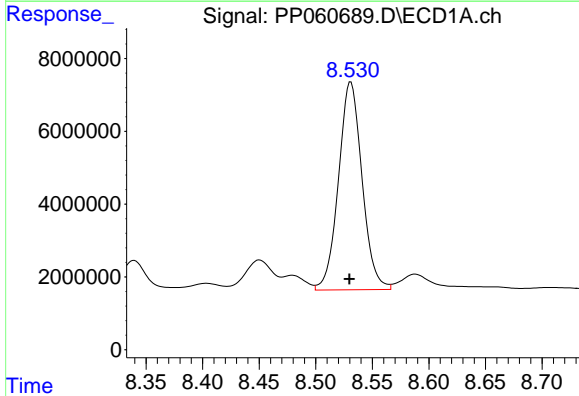
Manual Integrations
 APPROVED

Reviewed By :Yogesh Patel 10/09/2023
 Supervised By :Ankita Jodhani 10/09/2023



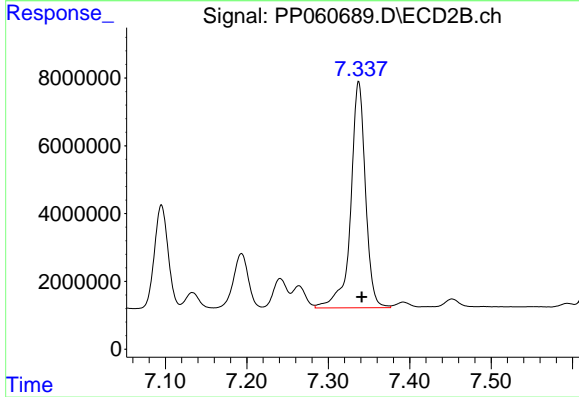
#34 AR-1260-4

R.T.: 7.095 min
 Delta R.T.: -0.005 min
 Response: 35591060
 Conc: 373.93 ng/ml



#35 AR-1260-5

R.T.: 8.531 min
 Delta R.T.: 0.001 min
 Response: 82788441
 Conc: 427.80 ng/ml



#35 AR-1260-5

R.T.: 7.337 min
 Delta R.T.: -0.004 min
 Response: 83984210
 Conc: 387.54 ng/ml