

Data Path : Z:\pestpcbsrv\HPCHEM1\ECD\_P\Data\PP100623\  
 Data File : PP060717.D  
 Signal(s) : Signal #1: ECD1A.ch Signal #2: ECD2B.ch  
 Acq On : 06 Oct 2023 21:43  
 Operator : YP\AJ  
 Sample : 04770-04  
 Misc :  
 ALS Vial : 30 Sample Multiplier: 1

Instrument :  
 ECD\_P  
 ClientSampleId :  
 1057

Integration File signal 1: autoint1.e  
 Integration File signal 2: autoint2.e  
 Quant Time: Oct 07 01:51:44 2023  
 Quant Method : Z:\pestpcbsrv\HPCHEM1\ECD\_P\methods\PP092623.M  
 Quant Title : GC EXTRACTABLES  
 QLast Update : Wed Sep 27 11:30:16 2023  
 Response via : Initial Calibration  
 Integrator: ChemStation

Volume Inj. : 2 µl  
 Signal #1 Phase : ZB-MR1 Signal #2 Phase: ZB-MR2  
 Signal #1 Info : 30Mx0.32mmx 0.50µ Signal #2 Info : 30M x 0.32mm x 0.25µm

Compound	RT#1	RT#2	Resp#1	Resp#2	ng/ml	ng/ml
-----						
System Monitoring Compounds						
1) SA Tetrachlo...	4.533	3.687	44227671	30789767	19.749	20.685
2) SA Decachlor...	10.462	8.752	19778145	16652848	11.202	10.209

Target Compounds

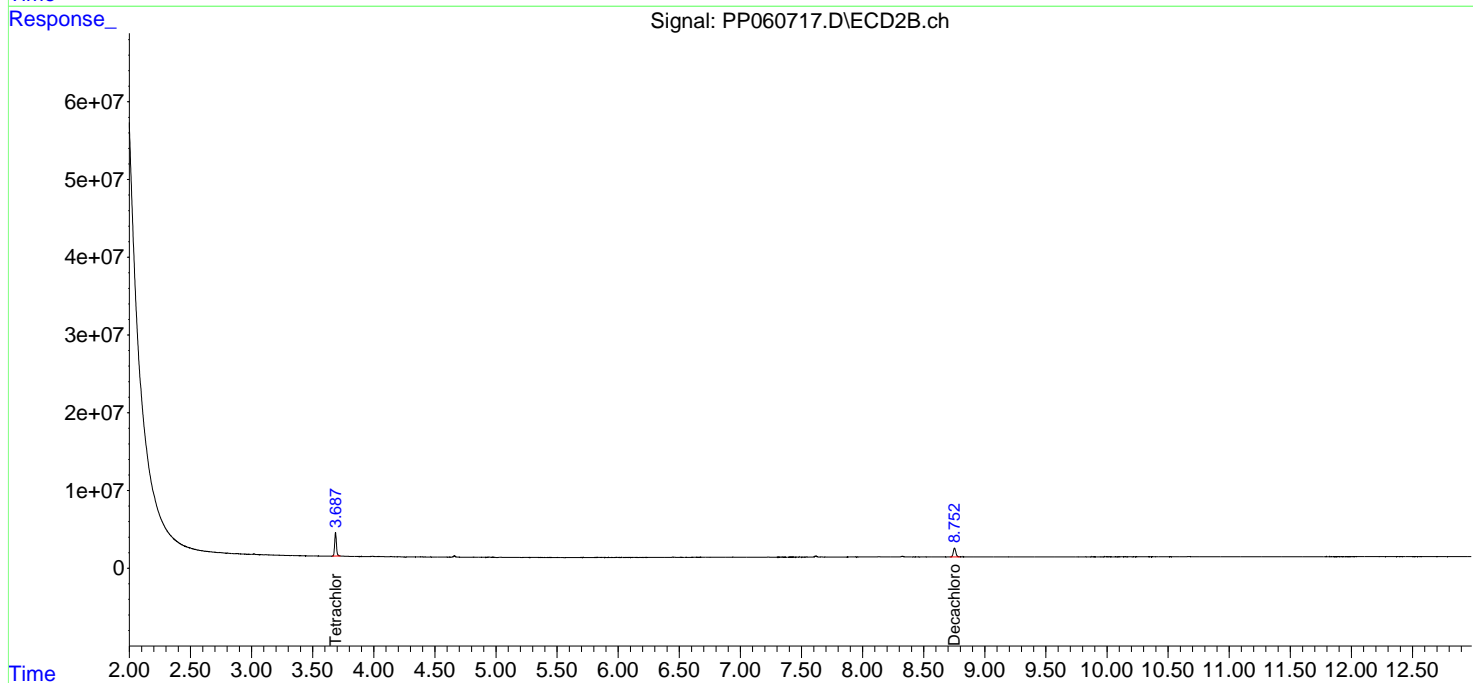
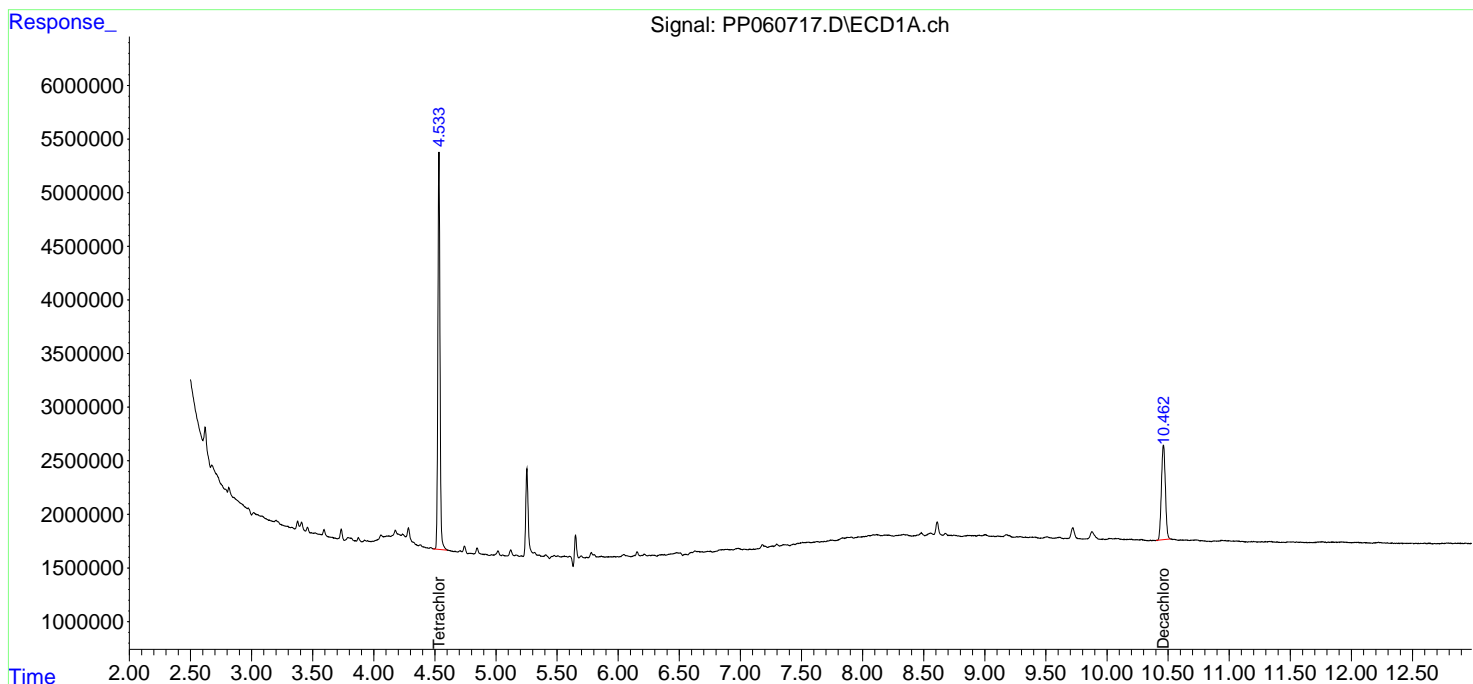
(f)=RT Delta > 1/2 Window (#)=Amounts differ by > 25% (m)=manual int.

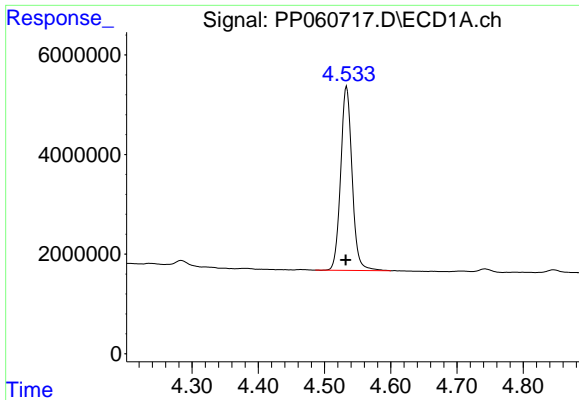
Data Path : Z:\pestpcbsrv\HPCHEM1\ECD\_P\Data\PP100623\  
 Data File : PP060717.D  
 Signal(s) : Signal #1: ECD1A.ch Signal #2: ECD2B.ch  
 Acq On : 06 Oct 2023 21:43  
 Operator : YP\AJ  
 Sample : 04770-04  
 Misc :  
 ALS Vial : 30 Sample Multiplier: 1

Instrument :  
 ECD\_P  
 ClientSampleId :  
 1057

Integration File signal 1: autoint1.e  
 Integration File signal 2: autoint2.e  
 Quant Time: Oct 07 01:51:44 2023  
 Quant Method : Z:\pestpcbsrv\HPCHEM1\ECD\_P\methods\PP092623.M  
 Quant Title : GC EXTRACTABLES  
 QLast Update : Wed Sep 27 11:30:16 2023  
 Response via : Initial Calibration  
 Integrator: ChemStation

Volume Inj. : 2 µl  
 Signal #1 Phase : ZB-MR1 Signal #2 Phase: ZB-MR2  
 Signal #1 Info : 30Mx0.32mmx 0.50µ Signal #2 Info : 30M x 0.32mm x 0.25µm

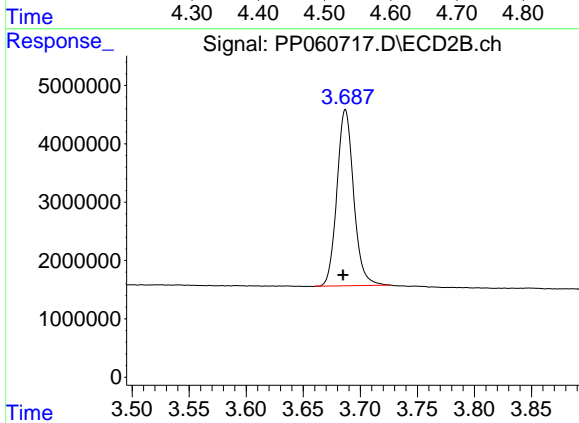




#1 Tetrachloro-m-xylene

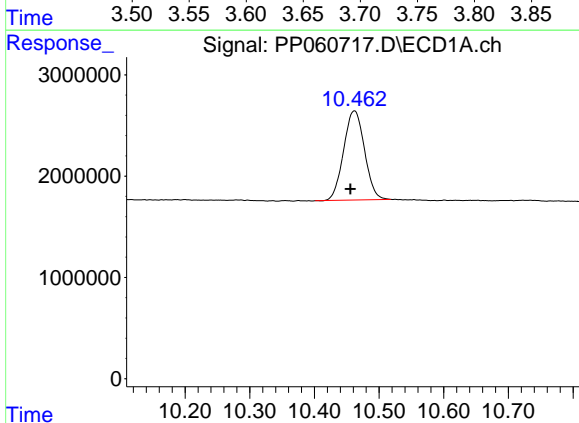
R.T.: 4.533 min  
 Delta R.T.: 0.001 min  
 Response: 44227671  
 Conc: 19.75 ng/ml

Instrument :  
 ECD\_P  
 ClientSampleId :  
 1057



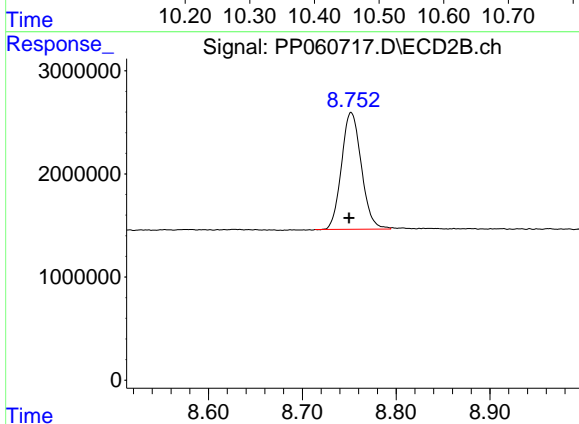
#1 Tetrachloro-m-xylene

R.T.: 3.687 min  
 Delta R.T.: 0.002 min  
 Response: 30789767  
 Conc: 20.69 ng/ml



#2 Decachlorobiphenyl

R.T.: 10.462 min  
 Delta R.T.: 0.007 min  
 Response: 19778145  
 Conc: 11.20 ng/ml



#2 Decachlorobiphenyl

R.T.: 8.752 min  
 Delta R.T.: 0.002 min  
 Response: 16652848  
 Conc: 10.21 ng/ml