

Data Path : Z:\pestpcbsrv\HPCHEM1\ECD_P\Data\PP100724\
 Data File : PP067580.D
 Signal(s) : Signal #1: ECD1A.ch Signal #2: ECD2B.ch
 Acq On : 08 Oct 2024 00:59
 Operator : YP\AJ
 Sample : AR1660CCC500
 Misc :
 ALS Vial : 3 Sample Multiplier: 1

Instrument :
 ECD_P
 ClientSampleId :
 AR1660CCC500

Integration File signal 1: autoint1.e
 Integration File signal 2: autoint2.e
 Quant Time: Oct 08 02:56:51 2024
 Quant Method : Z:\pestpcbsrv\HPCHEM1\ECD_P\methods\PP092624.M
 Quant Title : GC EXTRACTABLES
 QLast Update : Fri Sep 27 06:59:05 2024
 Response via : Initial Calibration
 Integrator: ChemStation

Volume Inj. : 2 µl
 Signal #1 Phase : ZB-MR1 Signal #2 Phase: ZB-MR2
 Signal #1 Info : 30Mx0.32mmx 0.50µ Signal #2 Info : 30M x 0.32mm x 0.25µm

Compound	RT#1	RT#2	Resp#1	Resp#2	ng/ml	ng/ml
System Monitoring Compounds						
1) SA Tetrachlo...	4.753	4.051	64484874	69760496	47.976	46.689
2) SA Decachlor...	10.663	9.217	75585020	70372118	52.066	51.067
Target Compounds						
3) L1 AR-1016-1	5.917	5.160	23131423	23979806	485.142	464.916
4) L1 AR-1016-2	5.939	5.180	34046191	33079847	491.700	465.231
5) L1 AR-1016-3	6.003	5.361	21819265	18738231	488.453	470.836
6) L1 AR-1016-4	6.102	5.400	17731825	15890934	493.437	460.219
7) L1 AR-1016-5	6.395	5.619	18176821	21106053	493.269	491.867
8) L2 AR-1221-1	4.951	4.265	2323574	2485276	138.798	129.997
9) L2 AR-1221-2	5.042	4.356	3381591	3832488	266.916	261.225
10) L2 AR-1221-3	5.118	4.433	12852232	13902420	332.087	320.600
11) L3 AR-1232-1	5.118	4.433	12852232	13902420	400.844	386.487
12) L3 AR-1232-2	5.652	5.180	18080039	33079847	1015.764	998.560
13) L3 AR-1232-3	5.939	5.361	34046191	18738231	1076.982	1042.996
14) L3 AR-1232-4	6.102	5.444	17731825	19440367	1098.840	1111.594
15) L3 AR-1232-5	6.190	5.619	16557891	21106053	1223.911	1124.088
16) L4 AR-1242-1	5.917	5.160	23131423	23979806	650.444	625.354
17) L4 AR-1242-2	5.939	5.180	34046191	33079847	650.737	631.677
18) L4 AR-1242-3	6.003	5.361	21819265	18738231	640.215	630.478
19) L4 AR-1242-4	6.102	5.444	17731825	19440367	646.535	604.137
20) L4 AR-1242-5	6.836	5.976	3225801	17177706	108.387	449.935 #
21) L5 AR-1248-1	5.917	5.160	23131423	23979806	819.244	782.992
22) L5 AR-1248-2	6.190	5.400	16557891	15890934	372.969	350.270
23) L5 AR-1248-3	6.395	5.444	18176821	19440367	374.594	410.690
24) L5 AR-1248-4	6.772	5.619	18456240	21106053	340.146	388.636
25) L5 AR-1248-5	6.836	6.017	3225801	3012410	58.498	61.808
26) L6 AR-1254-1	6.772	5.976	18456240	17177706	296.232	211.910 #
27) L6 AR-1254-2	6.988	6.123	16270356	16431875	179.318	224.043
28) L6 AR-1254-3	7.354	6.547	8860080	34457892	94.459	302.212 #
29) L6 AR-1254-4	7.638	6.760	5904075	2754689	88.591	44.135 #
30) L6 AR-1254-5	8.054	7.181	52175076	52718511	634.765	513.478
31) L7 AR-1260-1	7.519	6.664	37099775	38744355	470.914	473.627
32) L7 AR-1260-2	7.772	6.850	42887623	45674617	470.539	486.187
33) L7 AR-1260-3	8.134	7.007	30345391	44065683	480.376	486.401
34) L7 AR-1260-4	8.372	7.482	37351483	33433148	494.686	501.392
35) L7 AR-1260-5	8.708	7.720	65047528	75016492	502.393	515.275
36) L8 AR-1262-1	8.372	7.219	37351483	34925282	391.736	332.057
37) L8 AR-1262-2	8.708	7.482	65047528	33433148	400.913	353.132
38) L8 AR-1262-3	9.055	8.007	44373614	15967460	377.713	217.684 #
39) L8 AR-1262-4	9.121	8.070	25875113	54832216	279.772	416.032 #
40) L8 AR-1262-5	9.840	8.599	18181387	18689232	296.972	307.593
41) L9 AR-1268-1	9.055	8.007	44373614	15967460	230.476	79.279 #

Data Path : Z:\pestpcbsrv\HPCHEM1\ECD_P\Data\PP100724\
 Data File : PP067580.D
 Signal(s) : Signal #1: ECD1A.ch Signal #2: ECD2B.ch
 Acq On : 08 Oct 2024 00:59
 Operator : YP\AJ
 Sample : AR1660CCC500
 Misc :
 ALS Vial : 3 Sample Multiplier: 1

Instrument :
 ECD_P
 ClientSampleId :
 AR1660CCC500

Integration File signal 1: autoint1.e
 Integration File signal 2: autoint2.e
 Quant Time: Oct 08 02:56:51 2024
 Quant Method : Z:\pestpcbsrv\HPCHEM1\ECD_P\methods\PP092624.M
 Quant Title : GC EXTRACTABLES
 QLast Update : Fri Sep 27 06:59:05 2024
 Response via : Initial Calibration
 Integrator: ChemStation

Volume Inj. : 2 µl
 Signal #1 Phase : ZB-MR1 Signal #2 Phase: ZB-MR2
 Signal #1 Info : 30Mx0.32mmx 0.50µ Signal #2 Info : 30M x 0.32mm x 0.25µm

	Compound	RT#1	RT#2	Resp#1	Resp#2	ng/ml	ng/ml
42)	L9 AR-1268-2	9.121	8.070	25875113	54832216	151.678	306.554 #
43)	L9 AR-1268-3	9.394	8.291	1327620	1485562	8.818	9.351
44)	L9 AR-1268-4	9.840	8.599	18181387	18689232	298.781	289.466
45)	L9 AR-1268-5	10.291	8.925	6752339	6736568	15.629	15.248

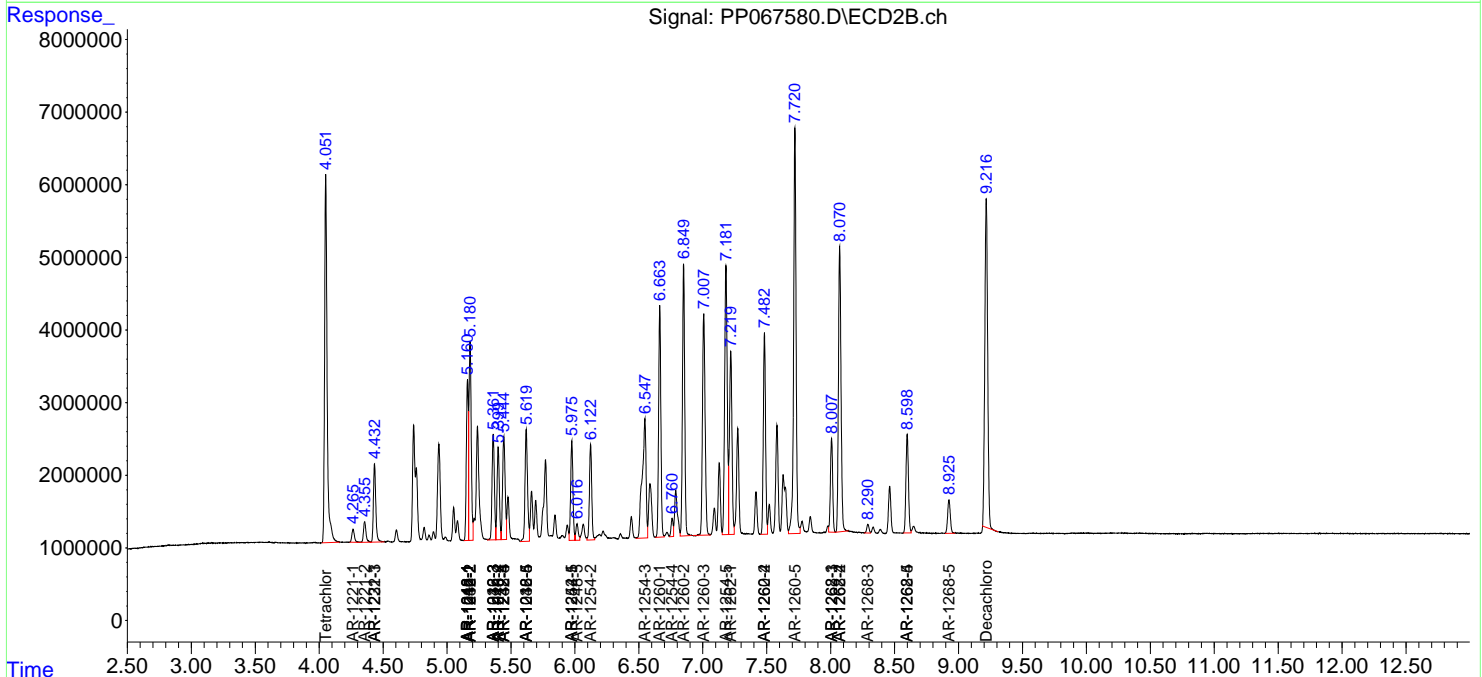
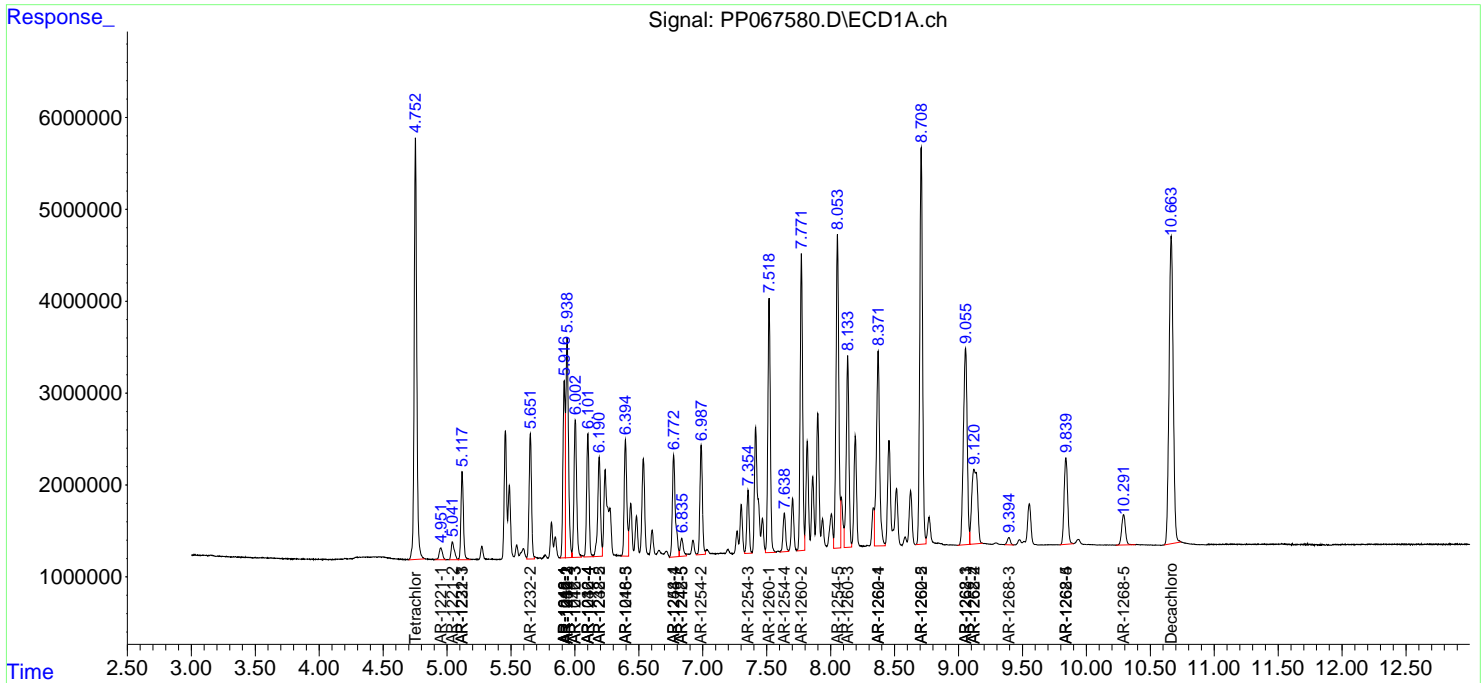
(f)=RT Delta > 1/2 Window (#)=Amounts differ by > 25% (m)=manual int.

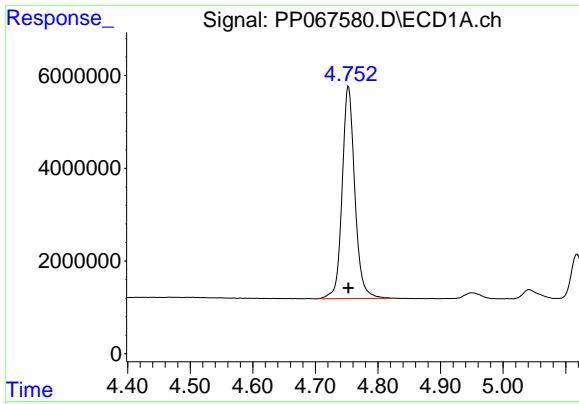
Data Path : Z:\pestpcbsrv\HPCHEM1\ECD_P\Data\PP100724\
 Data File : PP067580.D
 Signal(s) : Signal #1: ECD1A.ch Signal #2: ECD2B.ch
 Acq On : 08 Oct 2024 00:59
 Operator : YP\AJ
 Sample : AR1660CCC500
 Misc :
 ALS Vial : 3 Sample Multiplier: 1

Instrument :
 ECD_P
 ClientSampleId :
 AR1660CCC500

Integration File signal 1: autoint1.e
 Integration File signal 2: autoint2.e
 Quant Time: Oct 08 02:56:51 2024
 Quant Method : Z:\pestpcbsrv\HPCHEM1\ECD_P\methods\PP092624.M
 Quant Title : GC EXTRACTABLES
 QLast Update : Fri Sep 27 06:59:05 2024
 Response via : Initial Calibration
 Integrator: ChemStation

Volume Inj. : 2 µl
 Signal #1 Phase : ZB-MR1 Signal #2 Phase: ZB-MR2
 Signal #1 Info : 30Mx0.32mmx 0.50µ Signal #2 Info : 30M x 0.32mm x 0.25µm

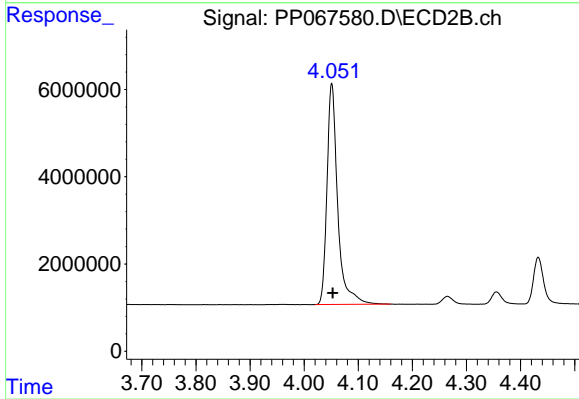




#1 Tetrachloro-m-xylene

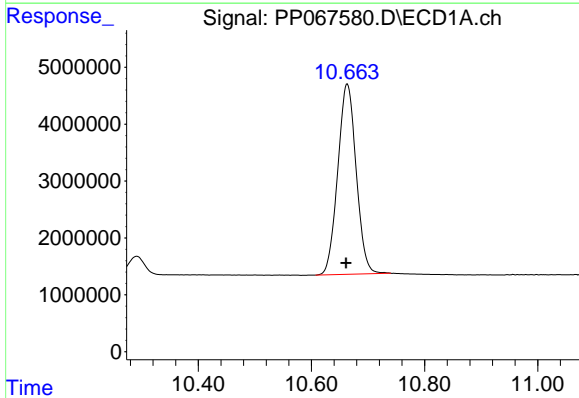
R.T.: 4.753 min
 Delta R.T.: 0.000 min
 Response: 64484874
 Conc: 47.98 ng/ml

Instrument :
 ECD_P
 ClientSampleId :
 AR1660CCC500



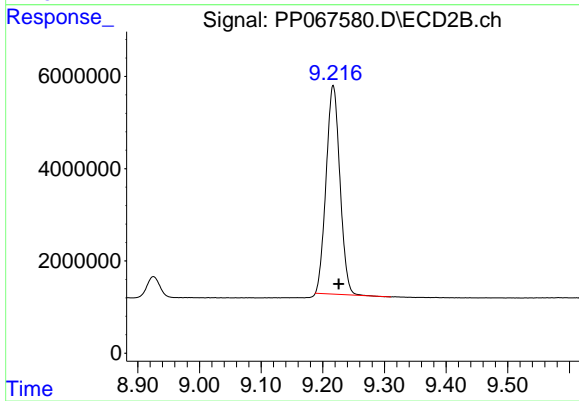
#1 Tetrachloro-m-xylene

R.T.: 4.051 min
 Delta R.T.: -0.002 min
 Response: 69760496
 Conc: 46.69 ng/ml



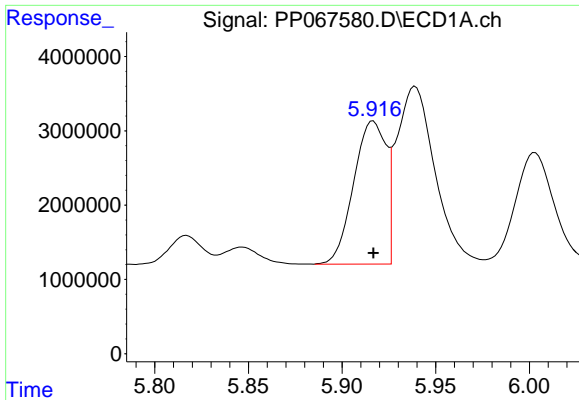
#2 Decachlorobiphenyl

R.T.: 10.663 min
 Delta R.T.: 0.002 min
 Response: 75585020
 Conc: 52.07 ng/ml



#2 Decachlorobiphenyl

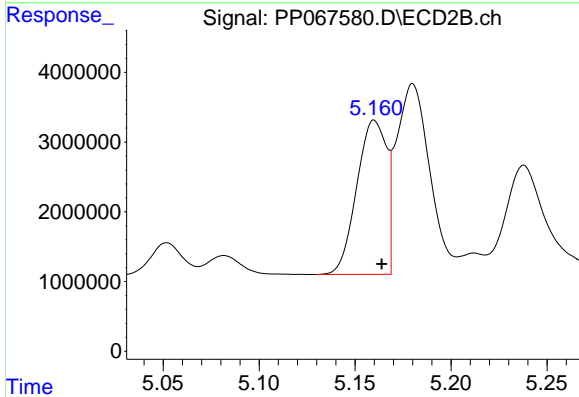
R.T.: 9.217 min
 Delta R.T.: -0.009 min
 Response: 70372118
 Conc: 51.07 ng/ml



#3 AR-1016-1

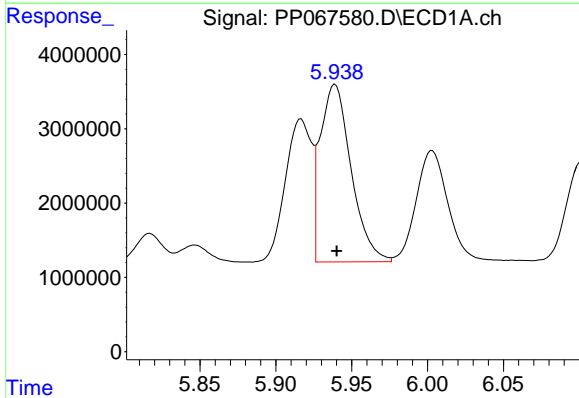
R.T.: 5.917 min
 Delta R.T.: 0.000 min
 Response: 23131423
 Conc: 485.14 ng/ml

Instrument :
 ECD_P
 ClientSampleId :
 AR1660CCC500



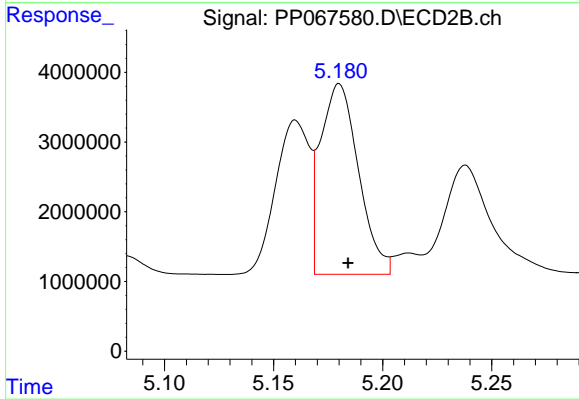
#3 AR-1016-1

R.T.: 5.160 min
 Delta R.T.: -0.004 min
 Response: 23979806
 Conc: 464.92 ng/ml



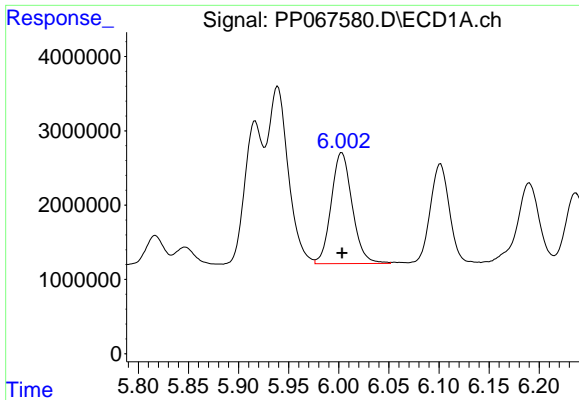
#4 AR-1016-2

R.T.: 5.939 min
 Delta R.T.: -0.001 min
 Response: 34046191
 Conc: 491.70 ng/ml



#4 AR-1016-2

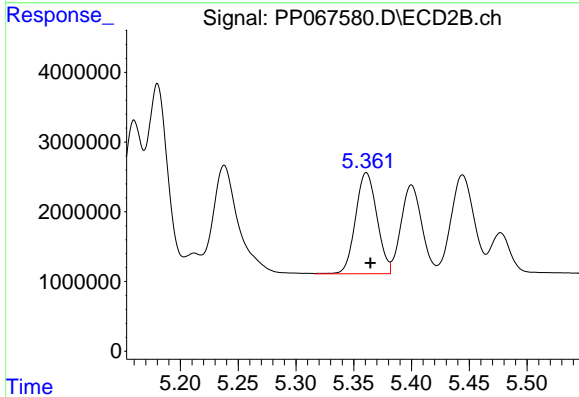
R.T.: 5.180 min
 Delta R.T.: -0.004 min
 Response: 33079847
 Conc: 465.23 ng/ml



#5 AR-1016-3

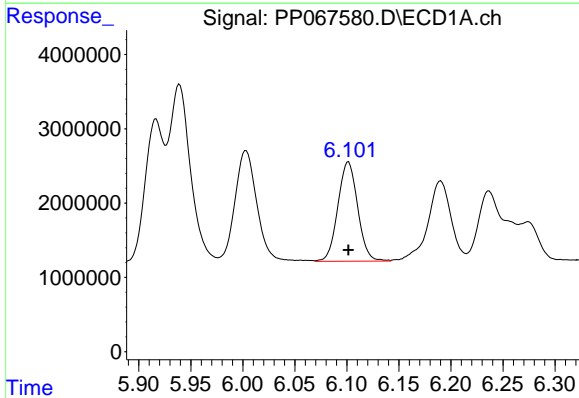
R.T.: 6.003 min
 Delta R.T.: 0.000 min
 Response: 21819265
 Conc: 488.45 ng/ml

Instrument :
 ECD_P
 ClientSampleId :
 AR1660CCC500



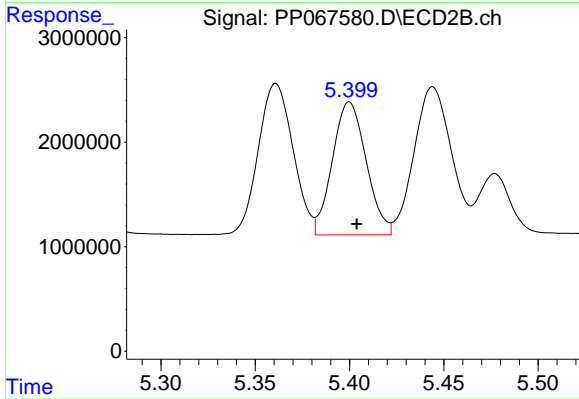
#5 AR-1016-3

R.T.: 5.361 min
 Delta R.T.: -0.004 min
 Response: 18738231
 Conc: 470.84 ng/ml



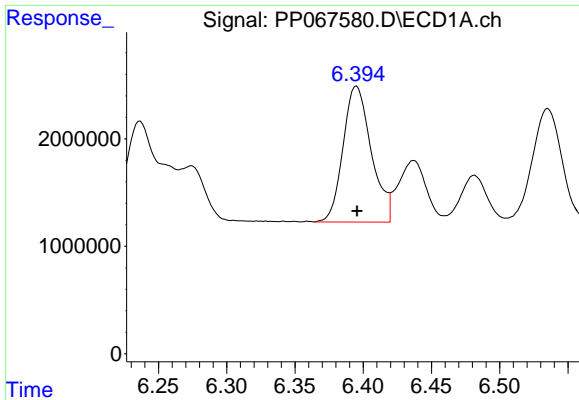
#6 AR-1016-4

R.T.: 6.102 min
 Delta R.T.: 0.000 min
 Response: 17731825
 Conc: 493.44 ng/ml



#6 AR-1016-4

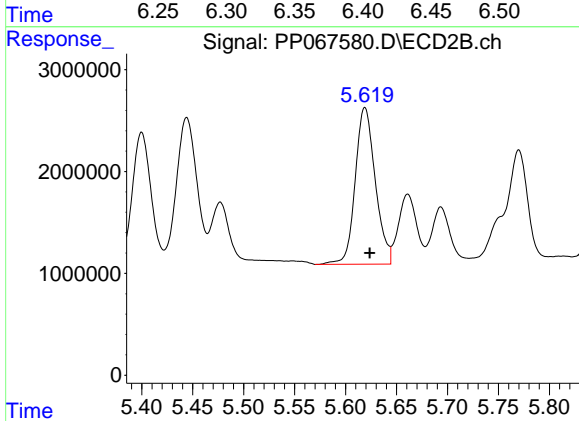
R.T.: 5.400 min
 Delta R.T.: -0.004 min
 Response: 15890934
 Conc: 460.22 ng/ml



#7 AR-1016-5

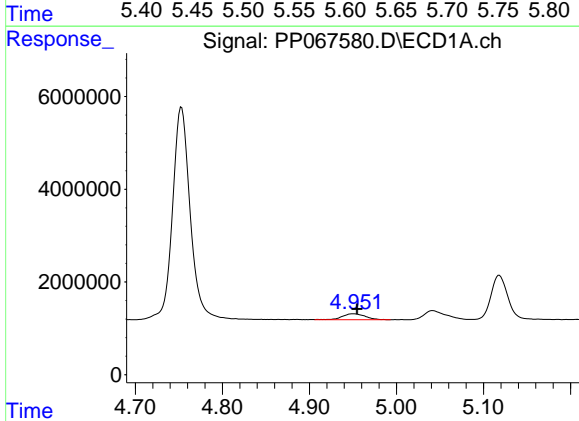
R.T.: 6.395 min
 Delta R.T.: 0.000 min
 Response: 18176821
 Conc: 493.27 ng/ml

Instrument :
 ECD_P
 ClientSampleId :
 AR1660CCC500



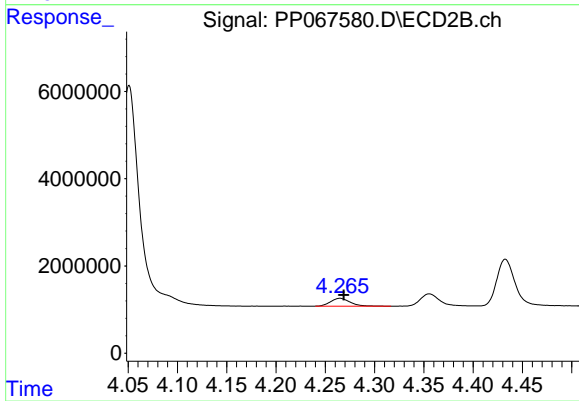
#7 AR-1016-5

R.T.: 5.619 min
 Delta R.T.: -0.005 min
 Response: 21106053
 Conc: 491.87 ng/ml



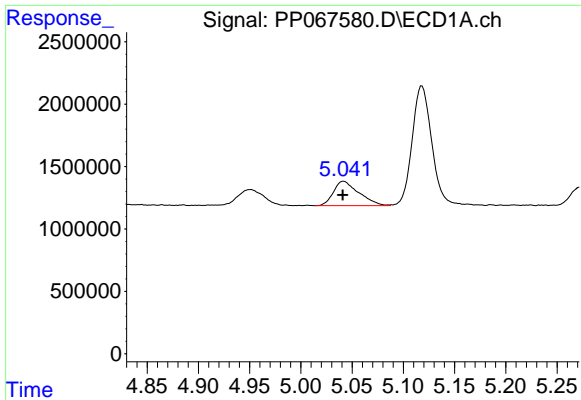
#8 AR-1221-1

R.T.: 4.951 min
 Delta R.T.: -0.004 min
 Response: 2323574
 Conc: 138.80 ng/ml



#8 AR-1221-1

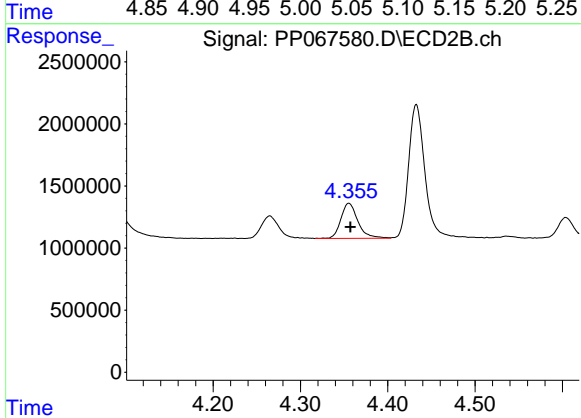
R.T.: 4.265 min
 Delta R.T.: -0.004 min
 Response: 2485276
 Conc: 130.00 ng/ml



#9 AR-1221-2

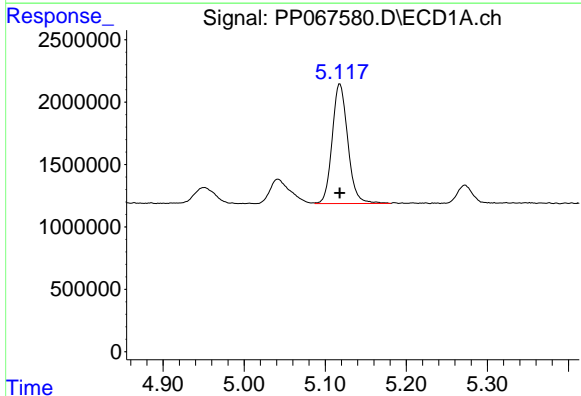
R.T.: 5.042 min
 Delta R.T.: 0.001 min
 Response: 3381591
 Conc: 266.92 ng/ml

Instrument :
 ECD_P
 ClientSampleId :
 AR1660CCC500



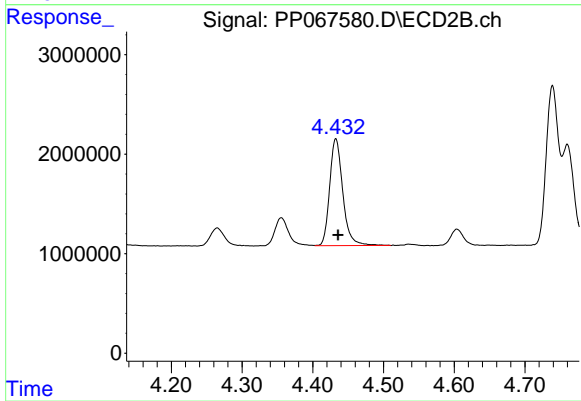
#9 AR-1221-2

R.T.: 4.356 min
 Delta R.T.: -0.002 min
 Response: 3832488
 Conc: 261.22 ng/ml



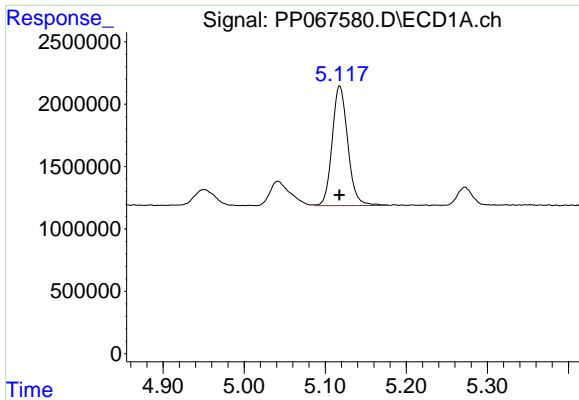
#10 AR-1221-3

R.T.: 5.118 min
 Delta R.T.: 0.000 min
 Response: 12852232
 Conc: 332.09 ng/ml



#10 AR-1221-3

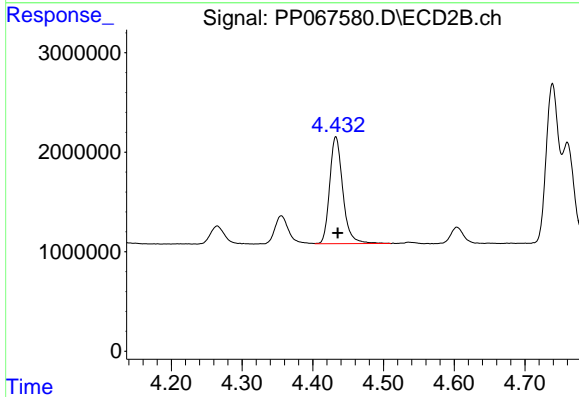
R.T.: 4.433 min
 Delta R.T.: -0.003 min
 Response: 13902420
 Conc: 320.60 ng/ml



#11 AR-1232-1

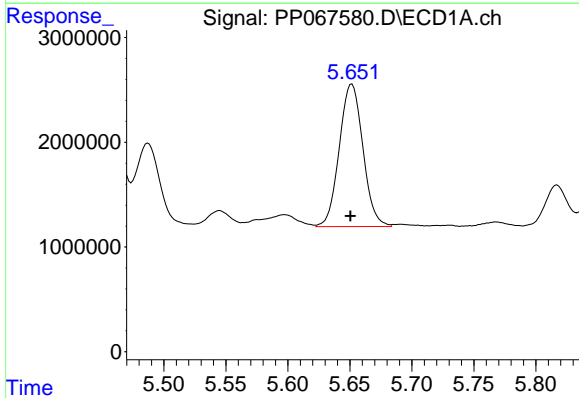
R.T.: 5.118 min
 Delta R.T.: 0.000 min
 Response: 12852232
 Conc: 400.84 ng/ml

Instrument :
 ECD_P
 ClientSampleId :
 AR1660CCC500



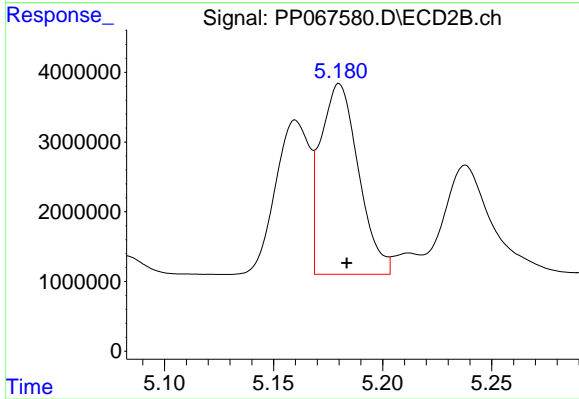
#11 AR-1232-1

R.T.: 4.433 min
 Delta R.T.: -0.003 min
 Response: 13902420
 Conc: 386.49 ng/ml



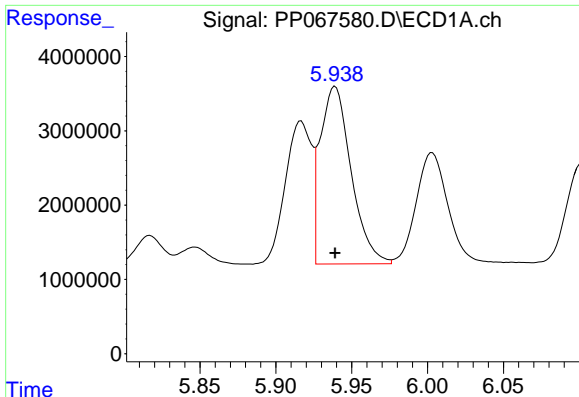
#12 AR-1232-2

R.T.: 5.652 min
 Delta R.T.: 0.001 min
 Response: 18080039
 Conc: 1015.76 ng/ml



#12 AR-1232-2

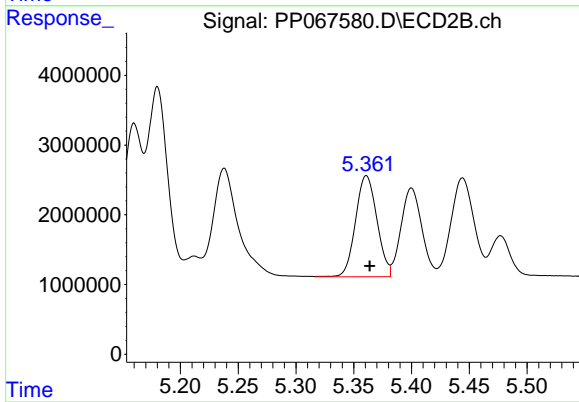
R.T.: 5.180 min
 Delta R.T.: -0.003 min
 Response: 33079847
 Conc: 998.56 ng/ml



#13 AR-1232-3

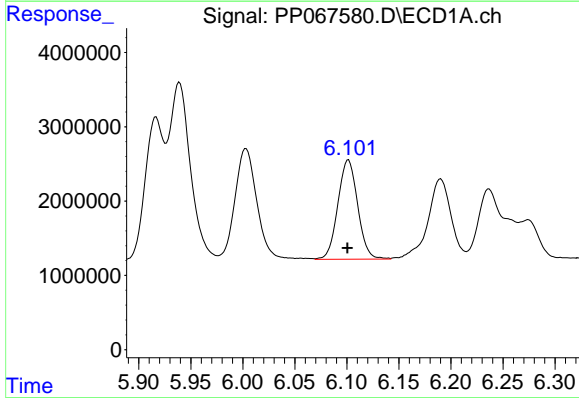
R.T.: 5.939 min
 Delta R.T.: 0.000 min
 Response: 34046191
 Conc: 1076.98 ng/ml

Instrument :
 ECD_P
 ClientSampleId :
 AR1660CCC500



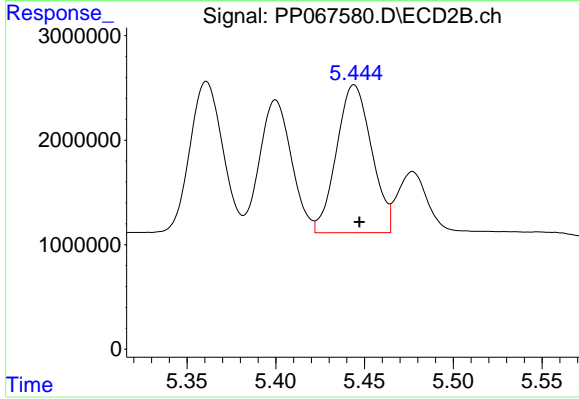
#13 AR-1232-3

R.T.: 5.361 min
 Delta R.T.: -0.003 min
 Response: 18738231
 Conc: 1043.00 ng/ml



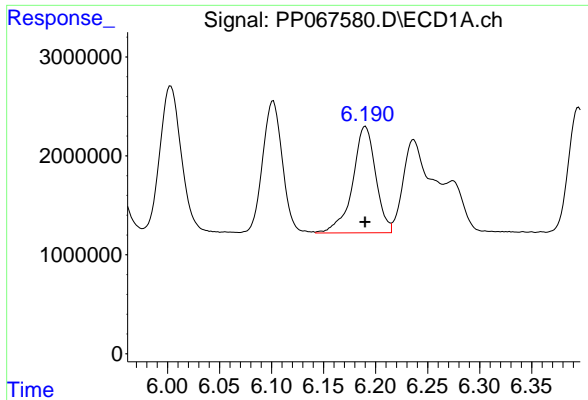
#14 AR-1232-4

R.T.: 6.102 min
 Delta R.T.: 0.001 min
 Response: 17731825
 Conc: 1098.84 ng/ml



#14 AR-1232-4

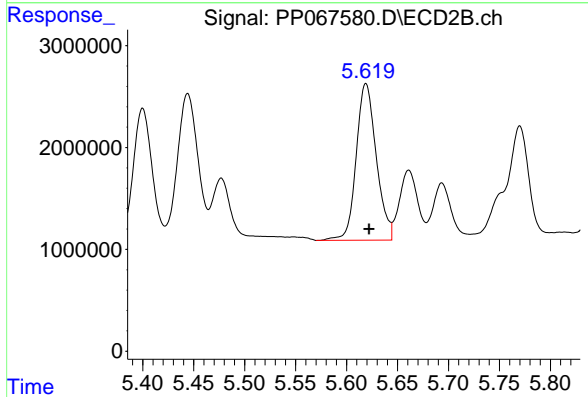
R.T.: 5.444 min
 Delta R.T.: -0.003 min
 Response: 19440367
 Conc: 1111.59 ng/ml



#15 AR-1232-5

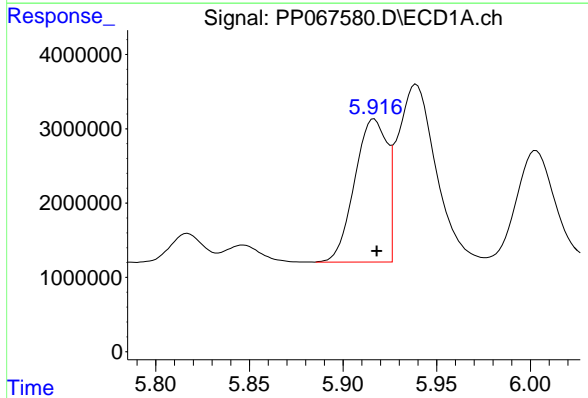
R.T.: 6.190 min
 Delta R.T.: 0.000 min
 Response: 16557891
 Conc: 1223.91 ng/ml

Instrument :
 ECD_P
 ClientSampleId :
 AR1660CCC500



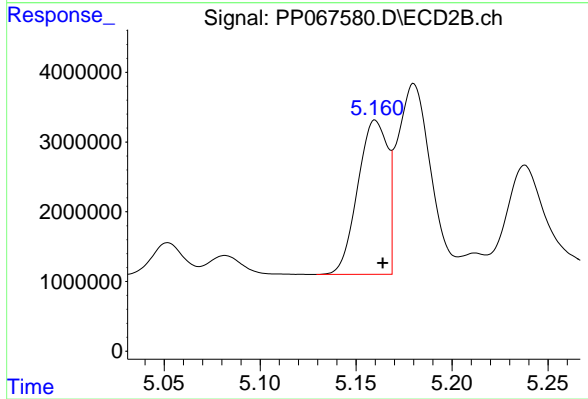
#15 AR-1232-5

R.T.: 5.619 min
 Delta R.T.: -0.003 min
 Response: 21106053
 Conc: 1124.09 ng/ml



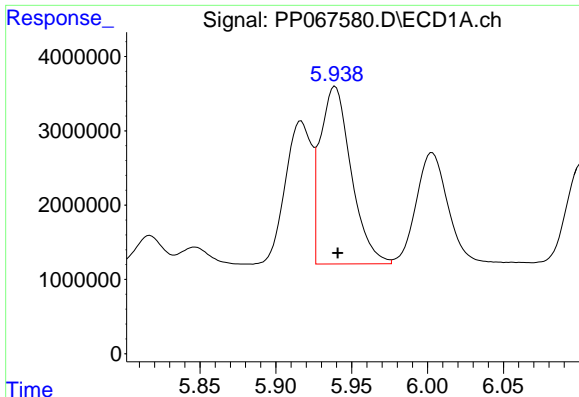
#16 AR-1242-1

R.T.: 5.917 min
 Delta R.T.: -0.001 min
 Response: 23131423
 Conc: 650.44 ng/ml



#16 AR-1242-1

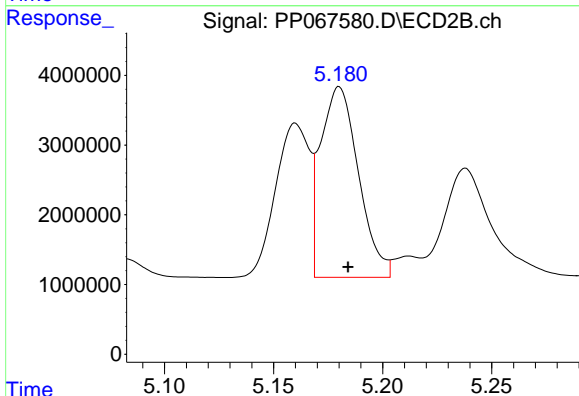
R.T.: 5.160 min
 Delta R.T.: -0.004 min
 Response: 23979806
 Conc: 625.35 ng/ml



#17 AR-1242-2

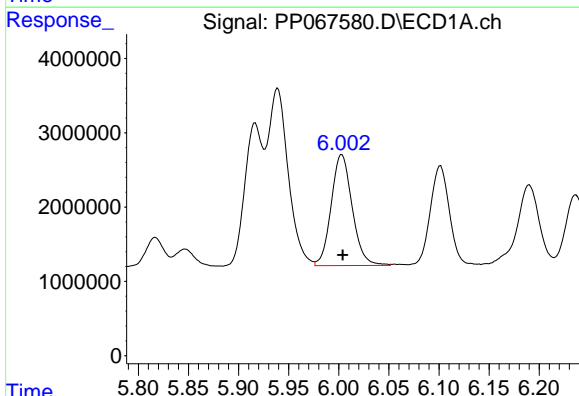
R.T.: 5.939 min
 Delta R.T.: -0.002 min
 Response: 34046191
 Conc: 650.74 ng/ml

Instrument :
 ECD_P
 ClientSampleId :
 AR1660CCC500



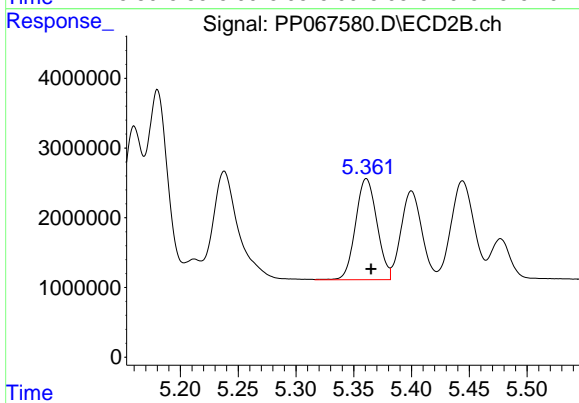
#17 AR-1242-2

R.T.: 5.180 min
 Delta R.T.: -0.004 min
 Response: 33079847
 Conc: 631.68 ng/ml



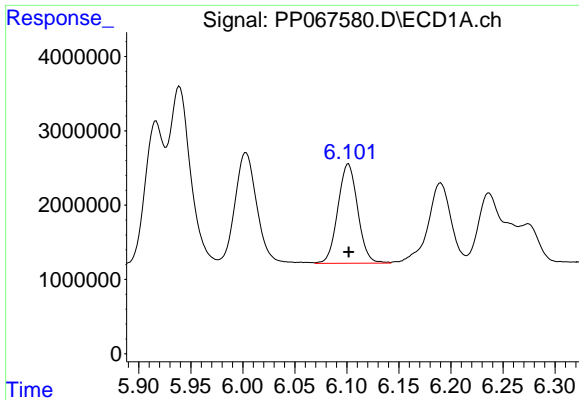
#18 AR-1242-3

R.T.: 6.003 min
 Delta R.T.: 0.000 min
 Response: 21819265
 Conc: 640.21 ng/ml



#18 AR-1242-3

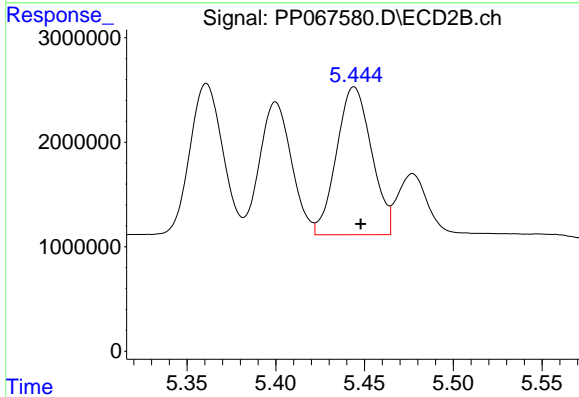
R.T.: 5.361 min
 Delta R.T.: -0.004 min
 Response: 18738231
 Conc: 630.48 ng/ml



#19 AR-1242-4

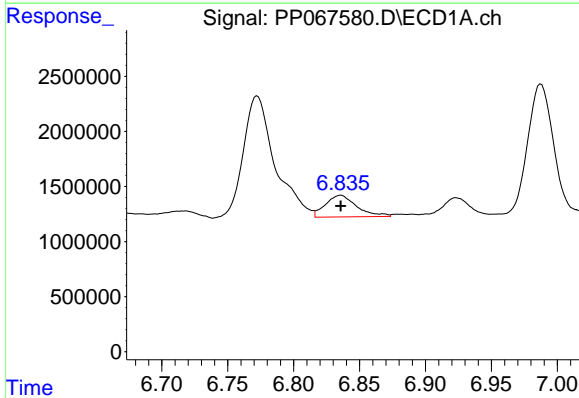
R.T.: 6.102 min
 Delta R.T.: 0.000 min
 Response: 17731825
 Conc: 646.53 ng/ml

Instrument :
 ECD_P
 ClientSampleId :
 AR1660CCC500



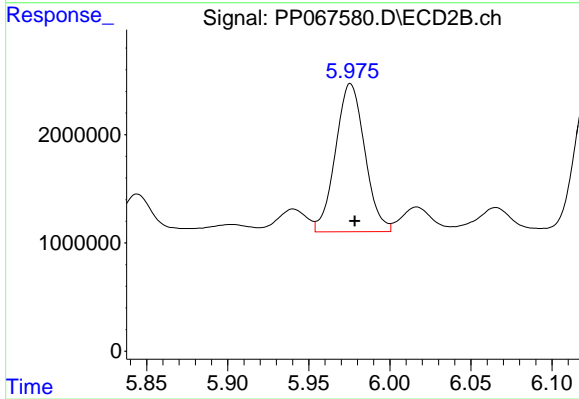
#19 AR-1242-4

R.T.: 5.444 min
 Delta R.T.: -0.004 min
 Response: 19440367
 Conc: 604.14 ng/ml



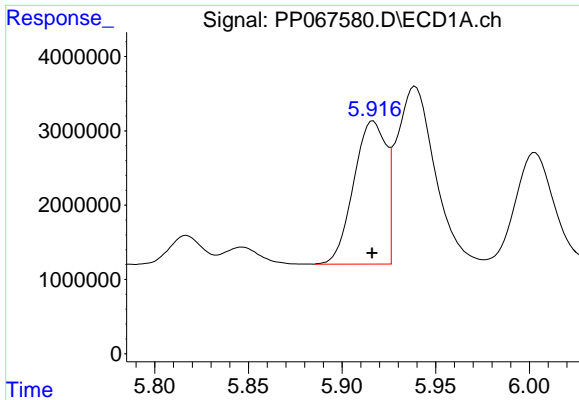
#20 AR-1242-5

R.T.: 6.836 min
 Delta R.T.: 0.000 min
 Response: 3225801
 Conc: 108.39 ng/ml



#20 AR-1242-5

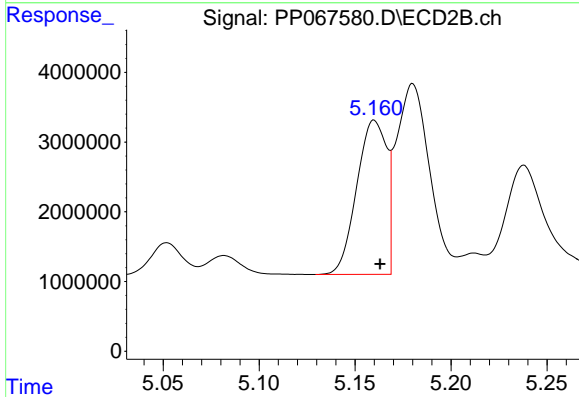
R.T.: 5.976 min
 Delta R.T.: -0.003 min
 Response: 17177706
 Conc: 449.94 ng/ml



#21 AR-1248-1

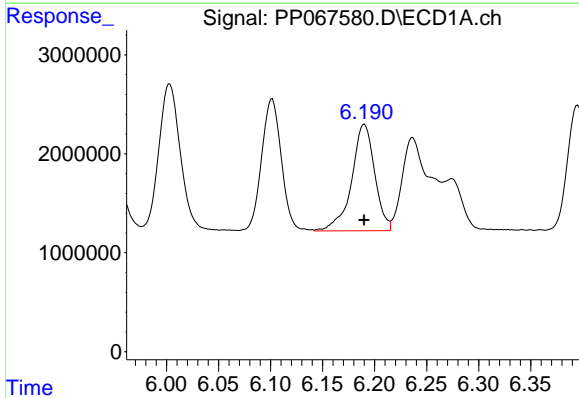
R.T.: 5.917 min
 Delta R.T.: 0.000 min
 Response: 23131423
 Conc: 819.24 ng/ml

Instrument :
 ECD_P
 ClientSampleId :
 AR1660CCC500



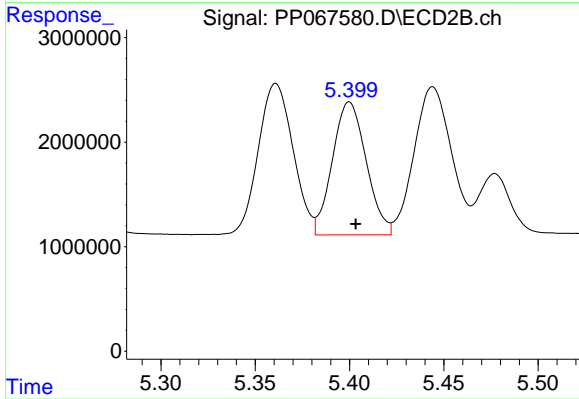
#21 AR-1248-1

R.T.: 5.160 min
 Delta R.T.: -0.003 min
 Response: 23979806
 Conc: 782.99 ng/ml



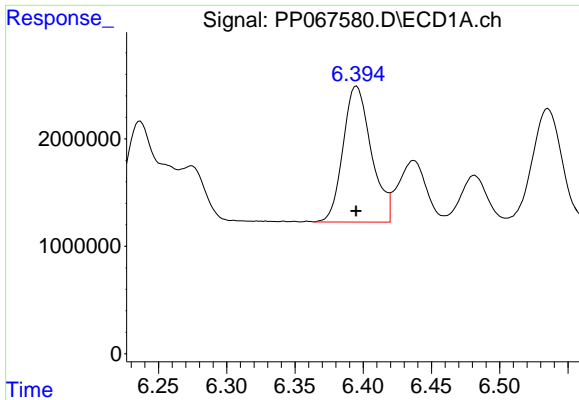
#22 AR-1248-2

R.T.: 6.190 min
 Delta R.T.: 0.000 min
 Response: 16557891
 Conc: 372.97 ng/ml



#22 AR-1248-2

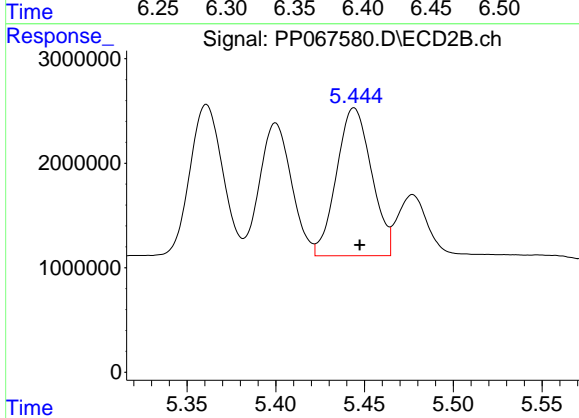
R.T.: 5.400 min
 Delta R.T.: -0.003 min
 Response: 15890934
 Conc: 350.27 ng/ml



#23 AR-1248-3

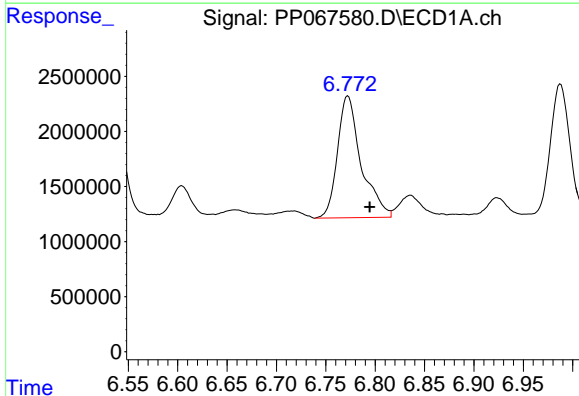
R.T.: 6.395 min
 Delta R.T.: 0.000 min
 Response: 18176821
 Conc: 374.59 ng/ml

Instrument :
 ECD_P
 ClientSampleId :
 AR1660CCC500



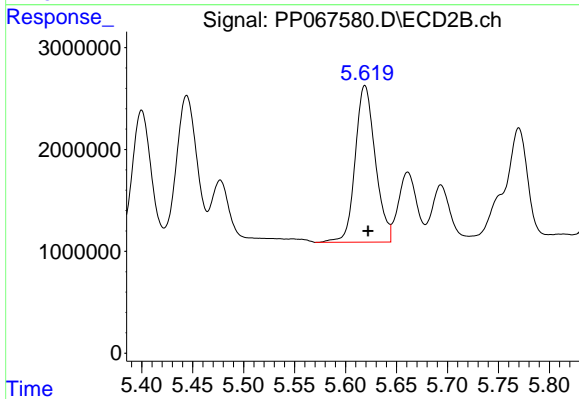
#23 AR-1248-3

R.T.: 5.444 min
 Delta R.T.: -0.003 min
 Response: 19440367
 Conc: 410.69 ng/ml



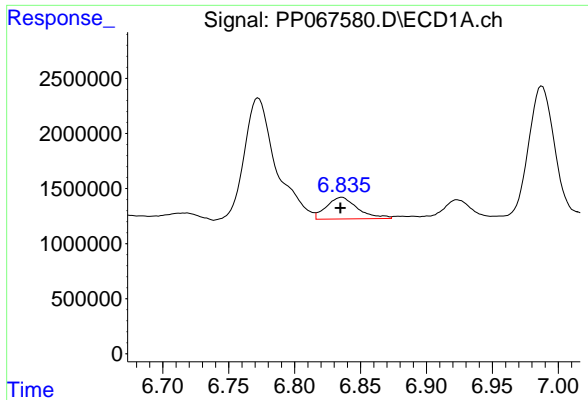
#24 AR-1248-4

R.T.: 6.772 min
 Delta R.T.: -0.022 min
 Response: 18456240
 Conc: 340.15 ng/ml



#24 AR-1248-4

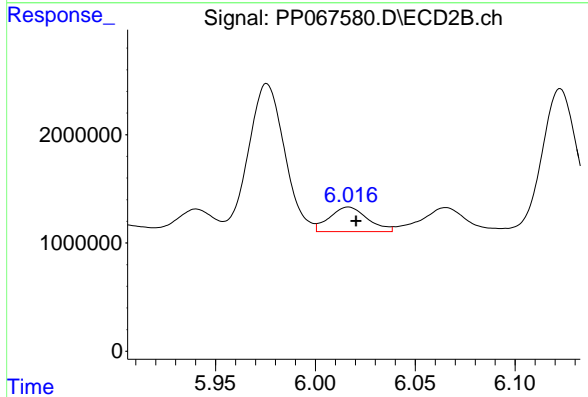
R.T.: 5.619 min
 Delta R.T.: -0.003 min
 Response: 21106053
 Conc: 388.64 ng/ml



#25 AR-1248-5

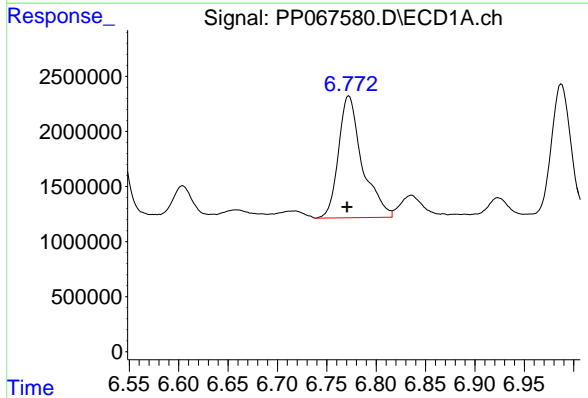
R.T.: 6.836 min
 Delta R.T.: 0.001 min
 Response: 3225801
 Conc: 58.50 ng/ml

Instrument :
 ECD_P
 ClientSampleId :
 AR1660CCC500



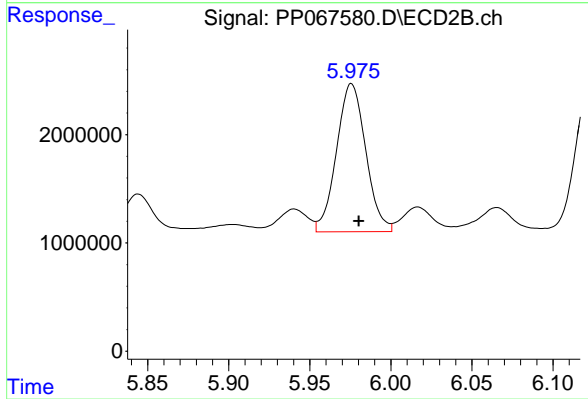
#25 AR-1248-5

R.T.: 6.017 min
 Delta R.T.: -0.004 min
 Response: 3012410
 Conc: 61.81 ng/ml



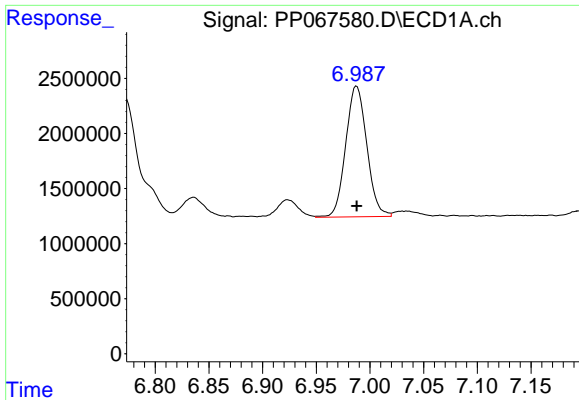
#26 AR-1254-1

R.T.: 6.772 min
 Delta R.T.: 0.002 min
 Response: 18456240
 Conc: 296.23 ng/ml



#26 AR-1254-1

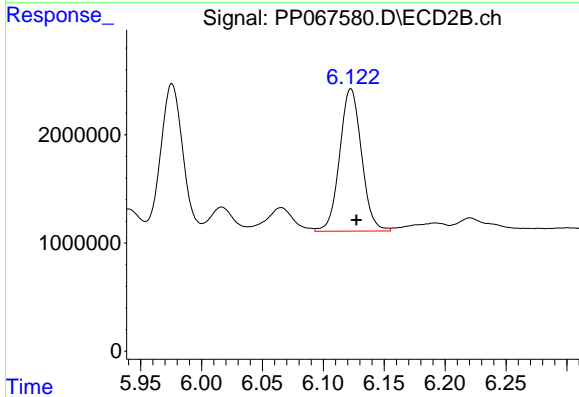
R.T.: 5.976 min
 Delta R.T.: -0.004 min
 Response: 17177706
 Conc: 211.91 ng/ml



#27 AR-1254-2

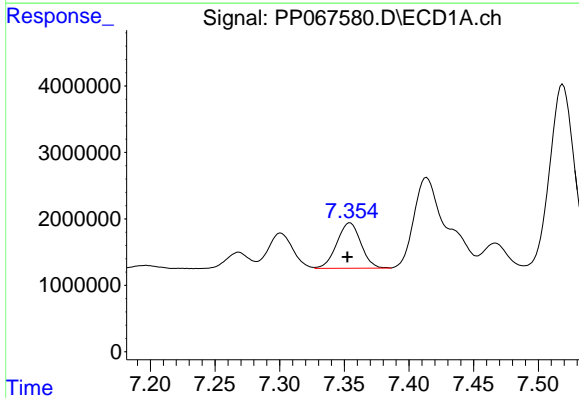
R.T.: 6.988 min
 Delta R.T.: 0.000 min
 Response: 16270356
 Conc: 179.32 ng/ml

Instrument :
 ECD_P
 ClientSampleId :
 AR1660CCC500



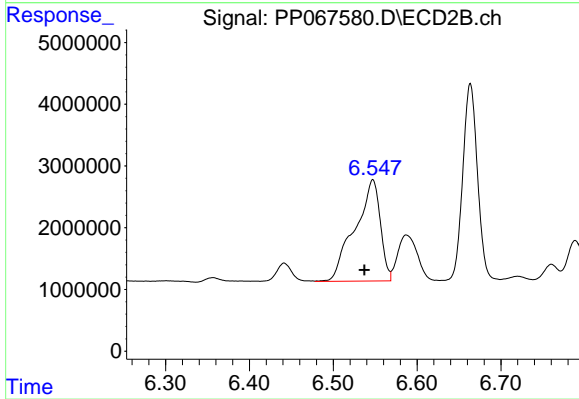
#27 AR-1254-2

R.T.: 6.123 min
 Delta R.T.: -0.005 min
 Response: 16431875
 Conc: 224.04 ng/ml



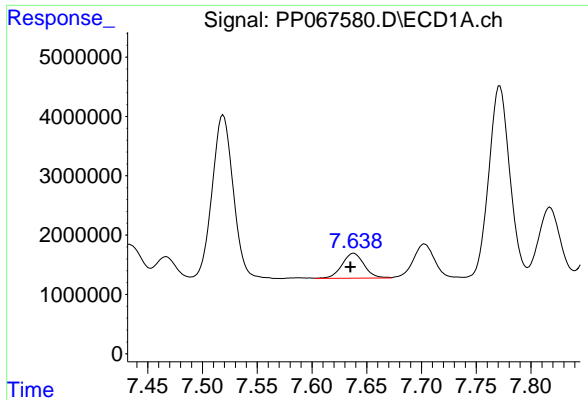
#28 AR-1254-3

R.T.: 7.354 min
 Delta R.T.: 0.002 min
 Response: 8860080
 Conc: 94.46 ng/ml



#28 AR-1254-3

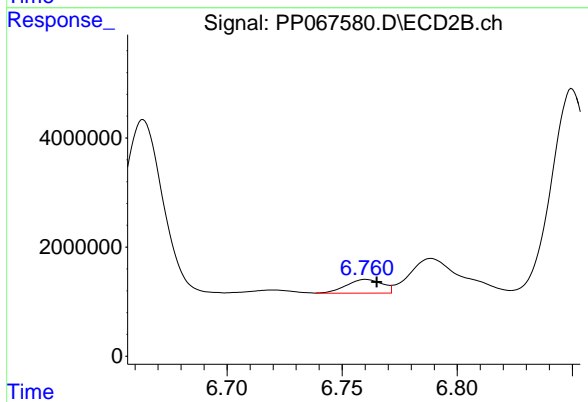
R.T.: 6.547 min
 Delta R.T.: 0.010 min
 Response: 34457892
 Conc: 302.21 ng/ml



#29 AR-1254-4

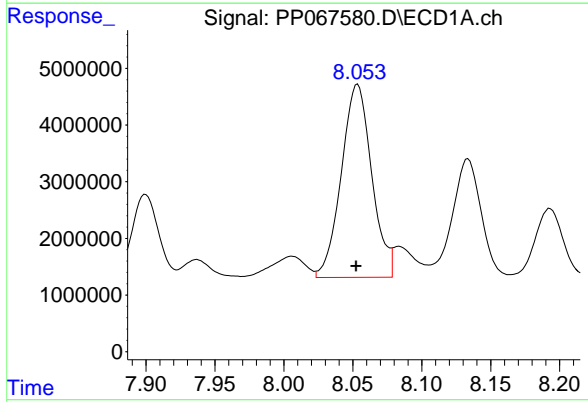
R.T.: 7.638 min
 Delta R.T.: 0.003 min
 Response: 5904075
 Conc: 88.59 ng/ml

Instrument :
 ECD_P
 ClientSampleId :
 AR1660CCC500



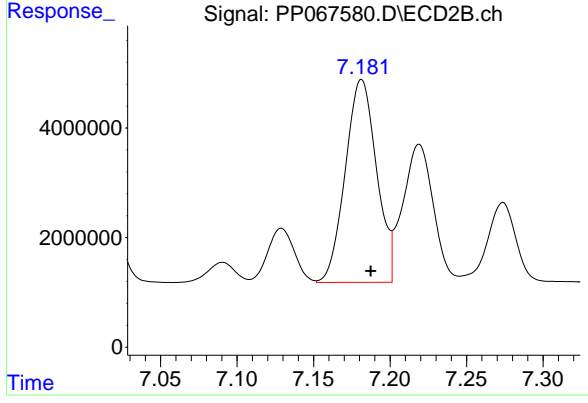
#29 AR-1254-4

R.T.: 6.760 min
 Delta R.T.: -0.005 min
 Response: 2754689
 Conc: 44.13 ng/ml



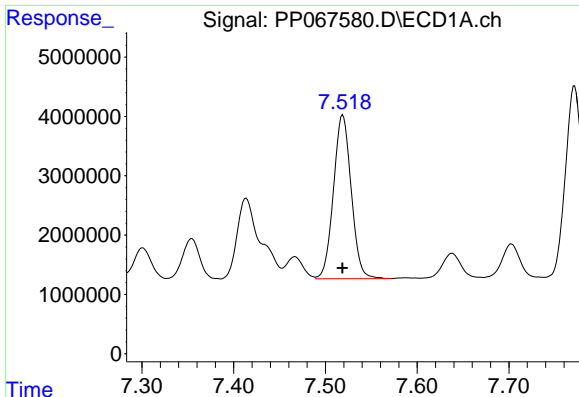
#30 AR-1254-5

R.T.: 8.054 min
 Delta R.T.: 0.001 min
 Response: 52175076
 Conc: 634.76 ng/ml



#30 AR-1254-5

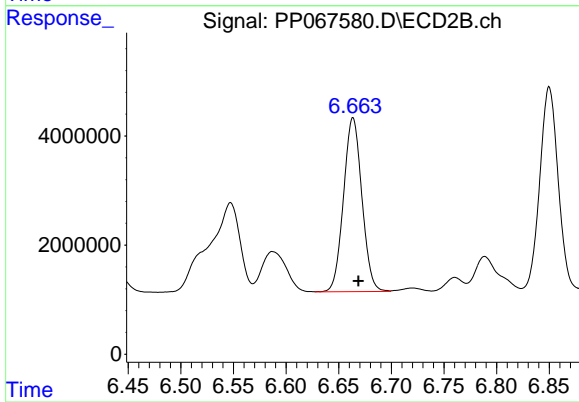
R.T.: 7.181 min
 Delta R.T.: -0.006 min
 Response: 52718511
 Conc: 513.48 ng/ml



#31 AR-1260-1

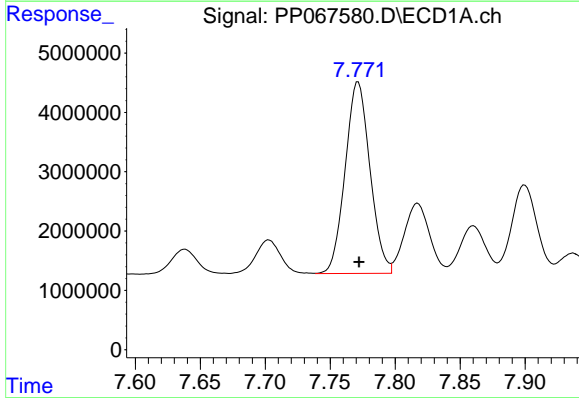
R.T.: 7.519 min
 Delta R.T.: 0.000 min
 Response: 37099775
 Conc: 470.91 ng/ml

Instrument :
 ECD_P
 ClientSampleId :
 AR1660CCC500



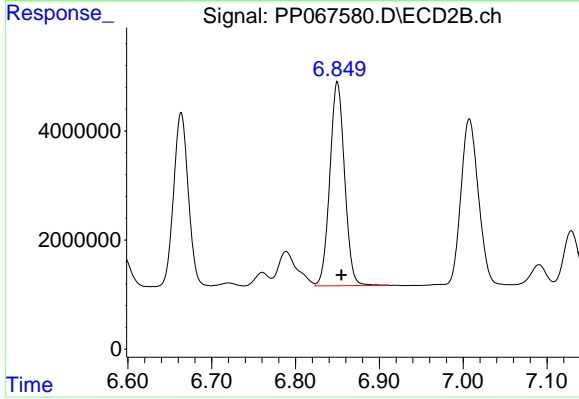
#31 AR-1260-1

R.T.: 6.664 min
 Delta R.T.: -0.005 min
 Response: 38744355
 Conc: 473.63 ng/ml



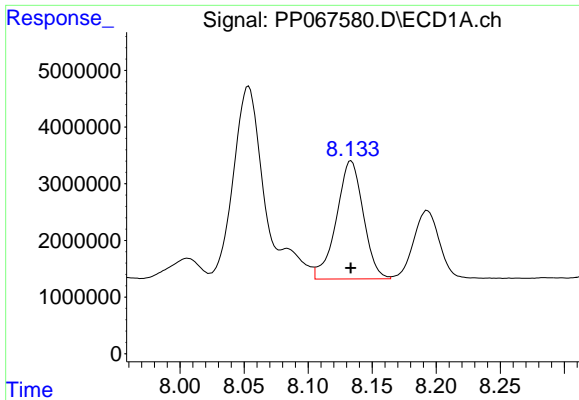
#32 AR-1260-2

R.T.: 7.772 min
 Delta R.T.: 0.000 min
 Response: 42887623
 Conc: 470.54 ng/ml



#32 AR-1260-2

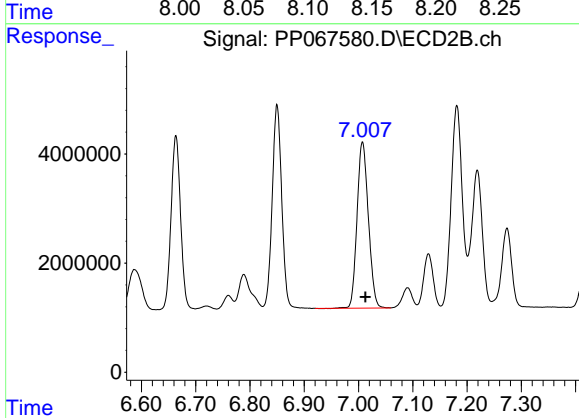
R.T.: 6.850 min
 Delta R.T.: -0.005 min
 Response: 45674617
 Conc: 486.19 ng/ml



#33 AR-1260-3

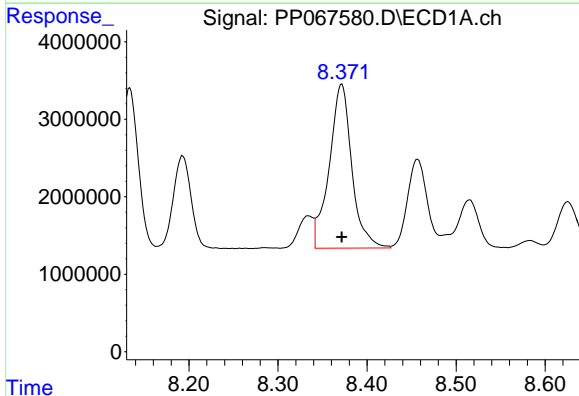
R.T.: 8.134 min
 Delta R.T.: 0.000 min
 Response: 30345391
 Conc: 480.38 ng/ml

Instrument :
 ECD_P
 ClientSampleId :
 AR1660CCC500



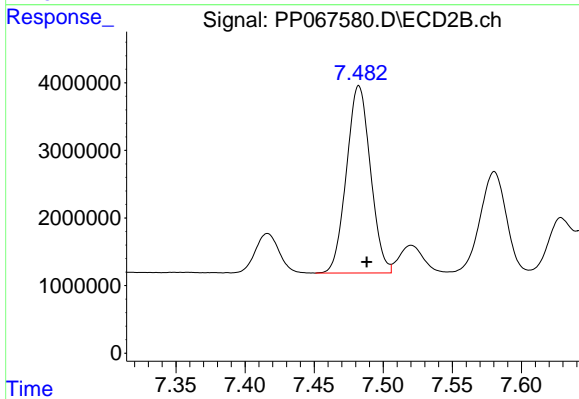
#33 AR-1260-3

R.T.: 7.007 min
 Delta R.T.: -0.005 min
 Response: 44065683
 Conc: 486.40 ng/ml



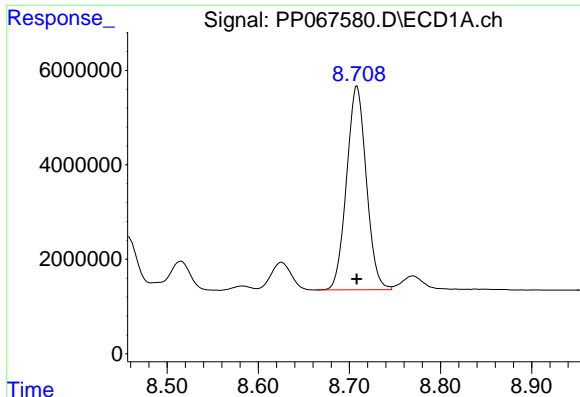
#34 AR-1260-4

R.T.: 8.372 min
 Delta R.T.: 0.000 min
 Response: 37351483
 Conc: 494.69 ng/ml



#34 AR-1260-4

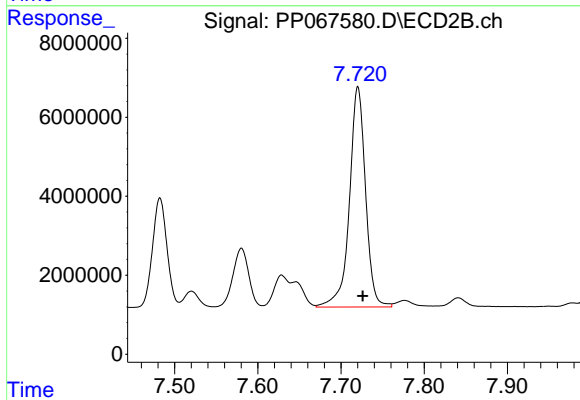
R.T.: 7.482 min
 Delta R.T.: -0.006 min
 Response: 33433148
 Conc: 501.39 ng/ml



#35 AR-1260-5

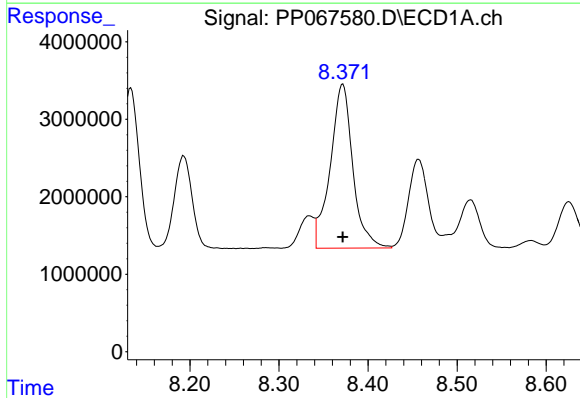
R.T.: 8.708 min
 Delta R.T.: 0.000 min
 Response: 65047528
 Conc: 502.39 ng/ml

Instrument :
 ECD_P
 ClientSampleId :
 AR1660CCC500



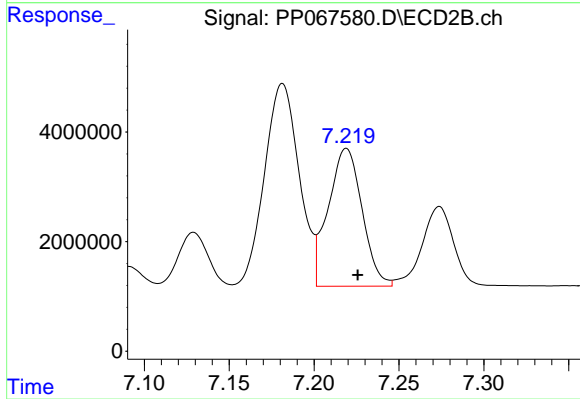
#35 AR-1260-5

R.T.: 7.720 min
 Delta R.T.: -0.006 min
 Response: 75016492
 Conc: 515.28 ng/ml



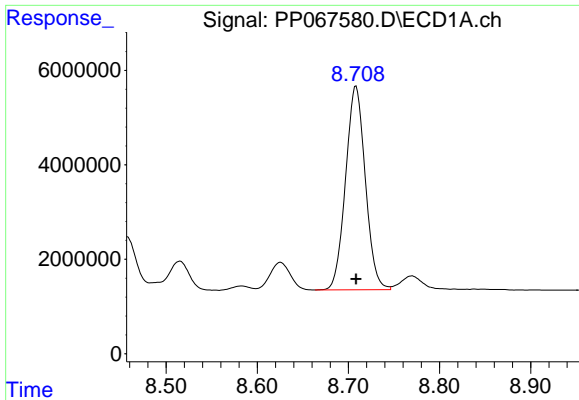
#36 AR-1262-1

R.T.: 8.372 min
 Delta R.T.: 0.000 min
 Response: 37351483
 Conc: 391.74 ng/ml



#36 AR-1262-1

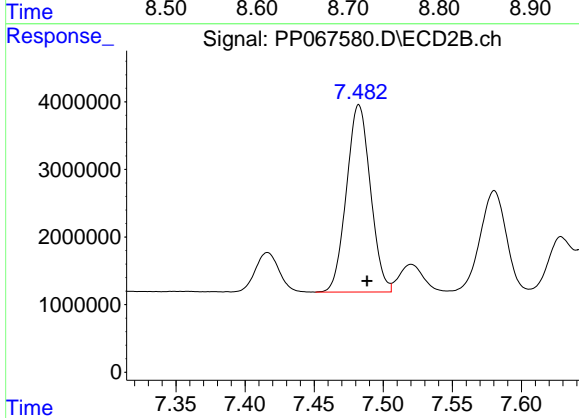
R.T.: 7.219 min
 Delta R.T.: -0.007 min
 Response: 34925282
 Conc: 332.06 ng/ml



#37 AR-1262-2

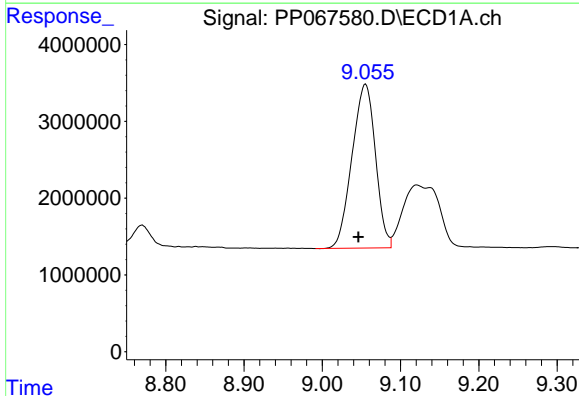
R.T.: 8.708 min
Delta R.T.: 0.000 min
Response: 65047528
Conc: 400.91 ng/ml

Instrument :
ECD_P
ClientSampleId :
AR1660CCC500



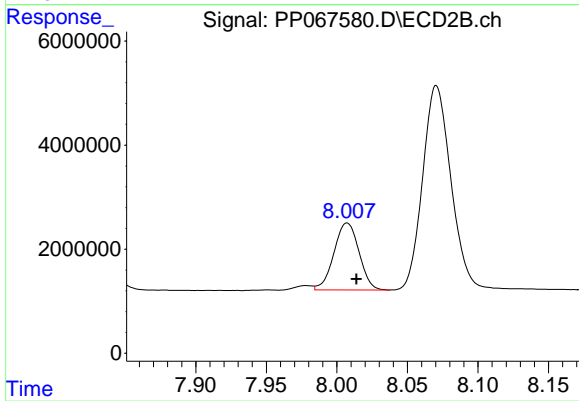
#37 AR-1262-2

R.T.: 7.482 min
Delta R.T.: -0.006 min
Response: 33433148
Conc: 353.13 ng/ml



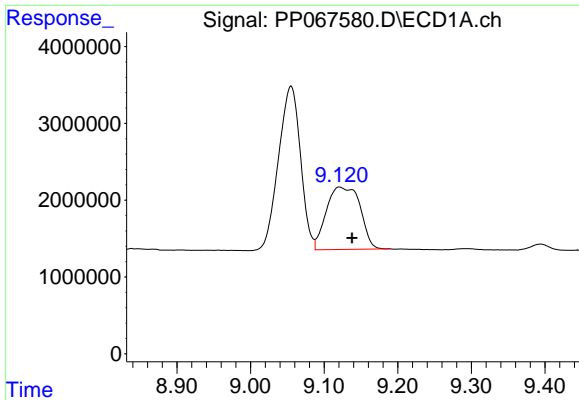
#38 AR-1262-3

R.T.: 9.055 min
Delta R.T.: 0.009 min
Response: 44373614
Conc: 377.71 ng/ml



#38 AR-1262-3

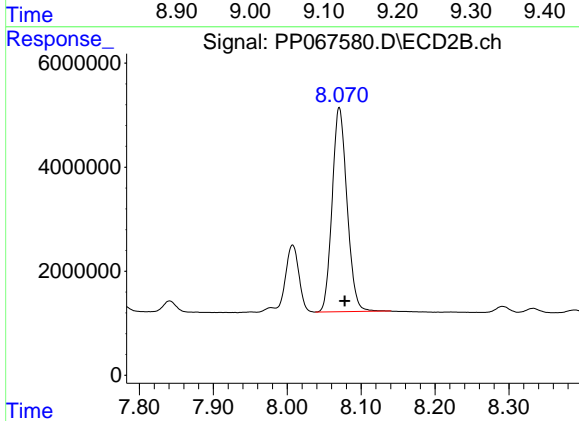
R.T.: 8.007 min
Delta R.T.: -0.007 min
Response: 15967460
Conc: 217.68 ng/ml



#39 AR-1262-4

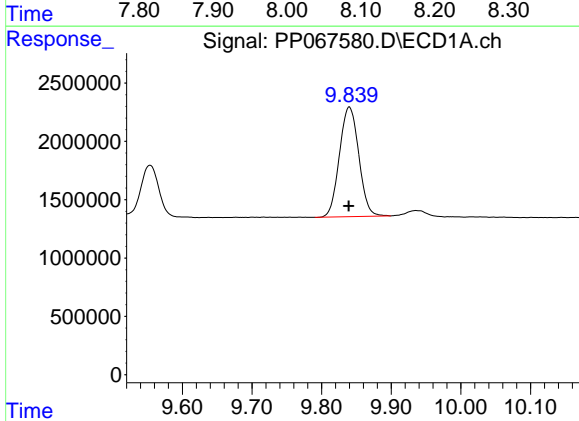
R.T.: 9.121 min
 Delta R.T.: -0.017 min
 Response: 25875113
 Conc: 279.77 ng/ml

Instrument :
 ECD_P
 ClientSampleId :
 AR1660CCC500



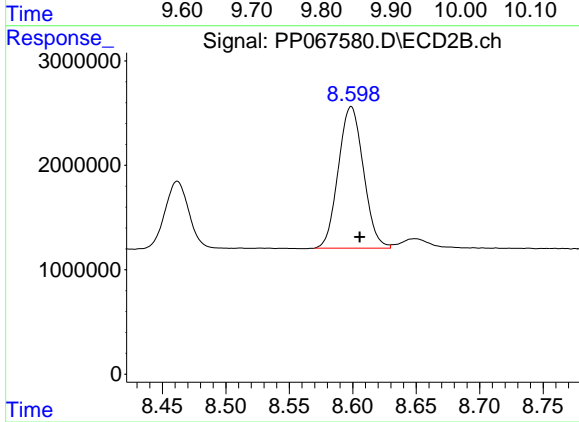
#39 AR-1262-4

R.T.: 8.070 min
 Delta R.T.: -0.007 min
 Response: 54832216
 Conc: 416.03 ng/ml



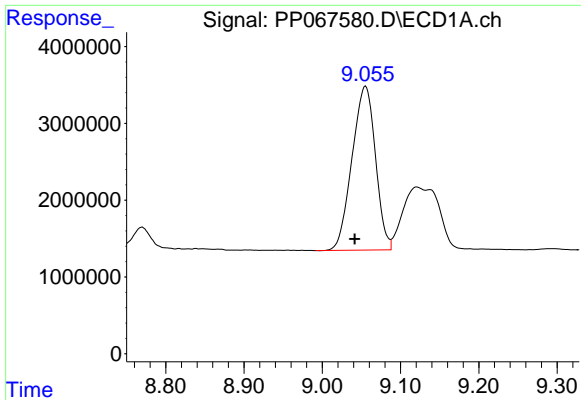
#40 AR-1262-5

R.T.: 9.840 min
 Delta R.T.: 0.001 min
 Response: 18181387
 Conc: 296.97 ng/ml



#40 AR-1262-5

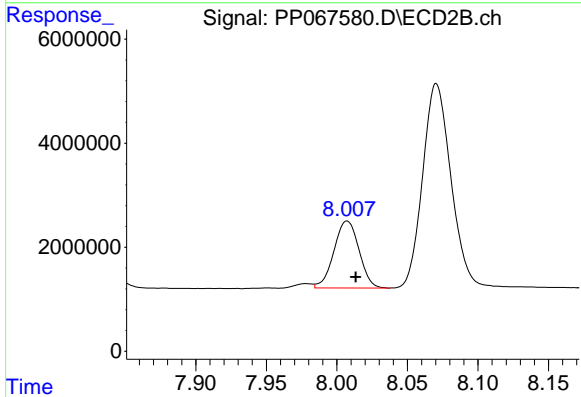
R.T.: 8.599 min
 Delta R.T.: -0.007 min
 Response: 18689232
 Conc: 307.59 ng/ml



#41 AR-1268-1

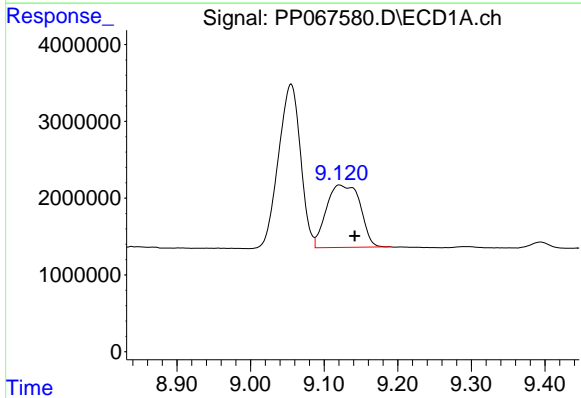
R.T.: 9.055 min
 Delta R.T.: 0.014 min
 Response: 44373614
 Conc: 230.48 ng/ml

Instrument :
 ECD_P
 ClientSampleId :
 AR1660CCC500



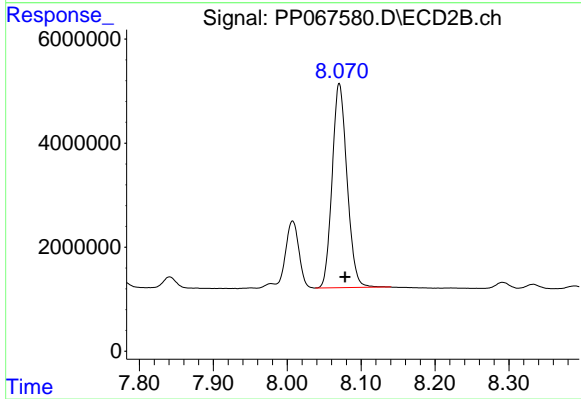
#41 AR-1268-1

R.T.: 8.007 min
 Delta R.T.: -0.006 min
 Response: 15967460
 Conc: 79.28 ng/ml



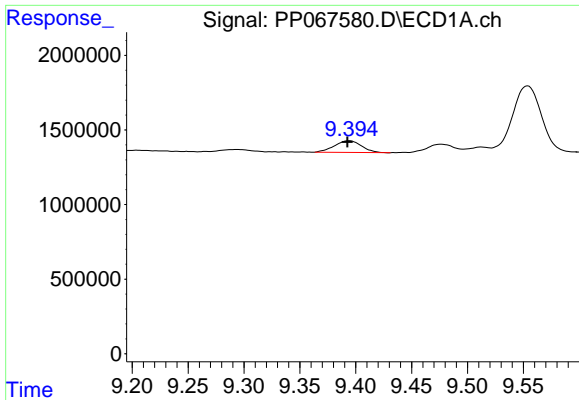
#42 AR-1268-2

R.T.: 9.121 min
 Delta R.T.: -0.020 min
 Response: 25875113
 Conc: 151.68 ng/ml



#42 AR-1268-2

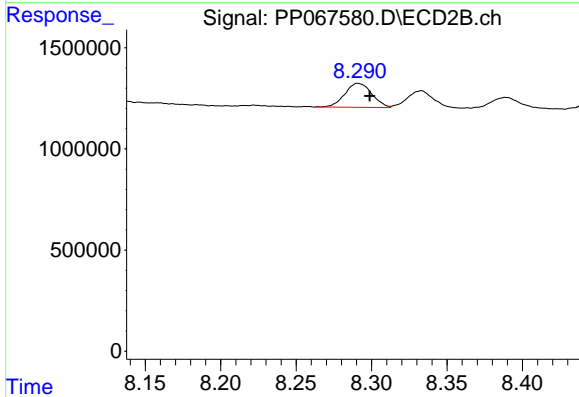
R.T.: 8.070 min
 Delta R.T.: -0.008 min
 Response: 54832216
 Conc: 306.55 ng/ml



#43 AR-1268-3

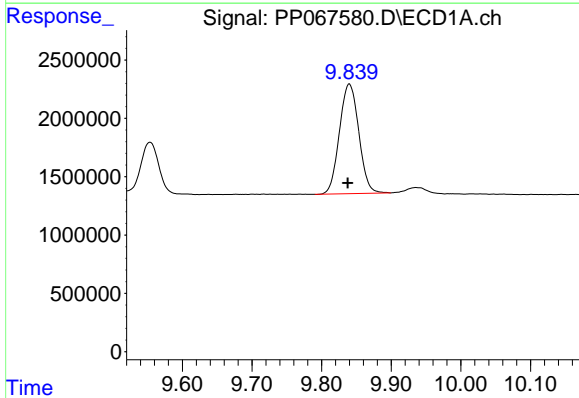
R.T.: 9.394 min
 Delta R.T.: 0.002 min
 Response: 1327620
 Conc: 8.82 ng/ml

Instrument :
 ECD_P
 ClientSampleId :
 AR1660CCC500



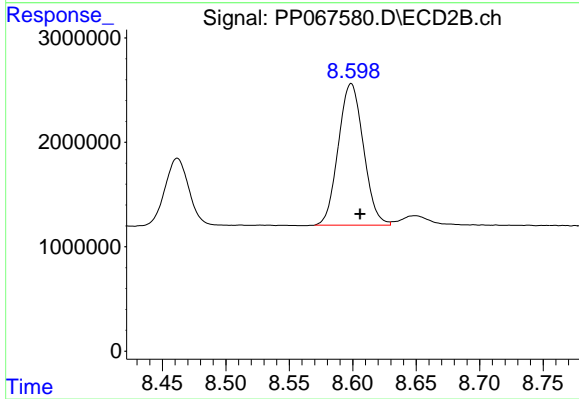
#43 AR-1268-3

R.T.: 8.291 min
 Delta R.T.: -0.008 min
 Response: 1485562
 Conc: 9.35 ng/ml



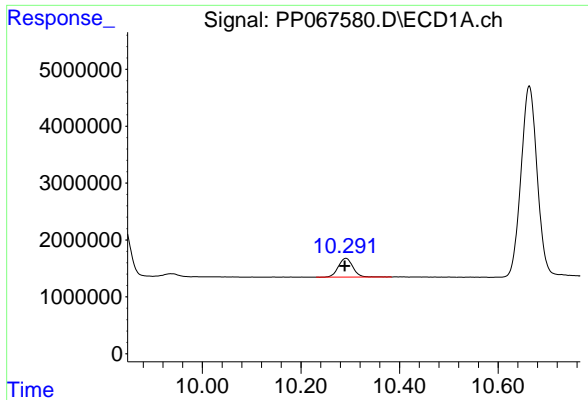
#44 AR-1268-4

R.T.: 9.840 min
 Delta R.T.: 0.002 min
 Response: 18181387
 Conc: 298.78 ng/ml



#44 AR-1268-4

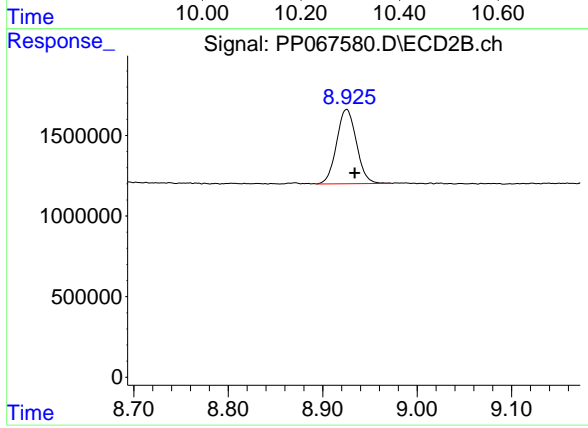
R.T.: 8.599 min
 Delta R.T.: -0.007 min
 Response: 18689232
 Conc: 289.47 ng/ml



#45 AR-1268-5

R.T.: 10.291 min
Delta R.T.: 0.002 min
Response: 6752339
Conc: 15.63 ng/ml

Instrument :
ECD_P
ClientSampleId :
AR1660CCC500



#45 AR-1268-5

R.T.: 8.925 min
Delta R.T.: -0.009 min
Response: 6736568
Conc: 15.25 ng/ml