

Data Path : Z:\pestpcbsrv\HPCHEM1\ECD\_P\Data\PP100821\  
 Data File : PP039912.D  
 Signal(s) : Signal #1: ECD1A.CH Signal #2: ECD2B.CH  
 Acq On : 08 Oct 2021 15:00  
 Operator : AJ\MA  
 Sample : M3990-09  
 Misc :  
 ALS Vial : 20 Sample Multiplier: 1

Instrument :  
 ECD\_P  
 ClientSampleId :

Integration File signal 1: autoint1.e  
 Integration File signal 2: autoint2.e  
 Quant Time: Oct 08 17:46:31 2021  
 Quant Method : Z:\pestpcbsrv\HPCHEM1\ECD\_P\methods\PP100621.M  
 Quant Title : GC EXTRACTABLES  
 QLast Update : Fri Oct 08 04:46:38 2021  
 Response via : Initial Calibration  
 Integrator: ChemStation 6890 Scale Mode: Small noise peaks clipped

Volume Inj. : 2 µl  
 Signal #1 Phase : ZB-MR1 Signal #2 Phase: ZB-MR2  
 Signal #1 Info : 30Mx0.32mmx 0.50µ Signal #2 Info : 30M x 0.32mm x 0.25µm

Compound	RT#1	RT#2	Resp#1	Resp#2	ng/ml	ng/ml
-----						
System Monitoring Compounds						
1) SA Tetrachlo...	4.896	3.984	577728	333166	18.976	19.930
2) SA Decachlor...	10.919	9.315	436105	431856	19.399	19.251
Target Compounds						
8) L2 AR-1221-1	5.147	0.000	84454	0	243.706	N.D. #
32) L7 AR-1260-2	8.150f	7.020f	29776	9971	18.562	7.890 #
33) L7 AR-1260-3	0.000	7.210	0	27053	N.D.	20.403 #
43) L9 AR-1268-3	0.000	8.523f	0	6538	N.D.	2.792 #
-----						

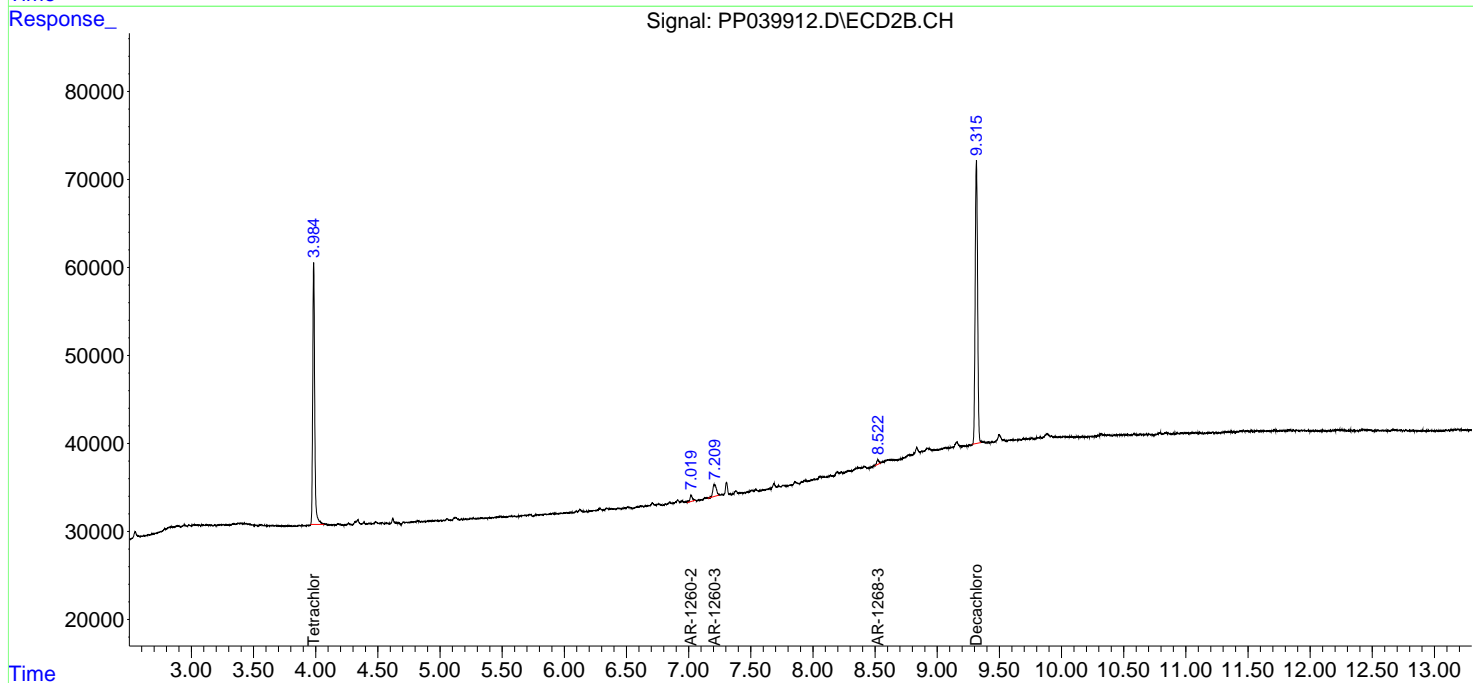
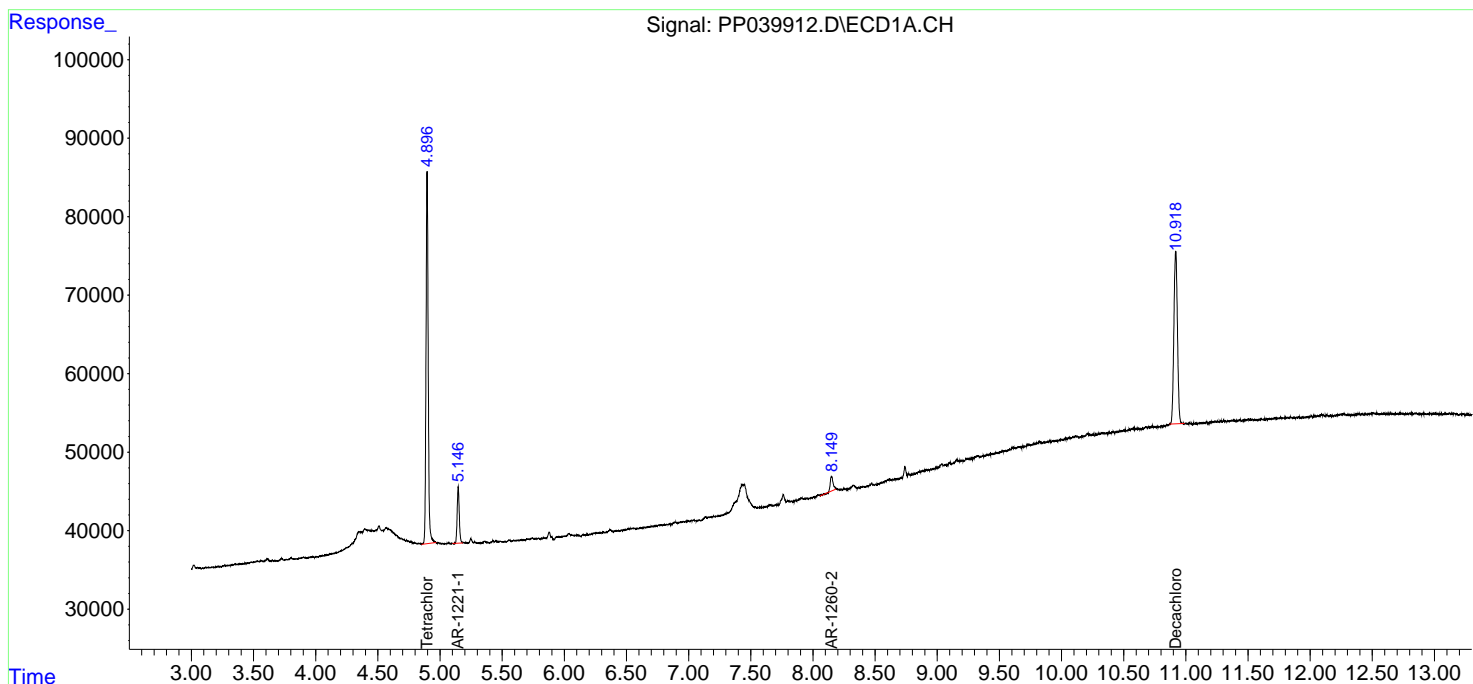
(f)=RT Delta > 1/2 Window (#)=Amounts differ by > 25% (m)=manual int.

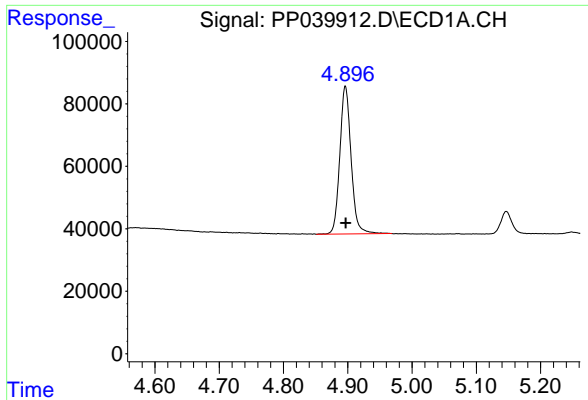
Data Path : Z:\pestpcbsrv\HPCHEM1\ECD\_P\Data\PP100821\  
 Data File : PP039912.D  
 Signal(s) : Signal #1: ECD1A.CH Signal #2: ECD2B.CH  
 Acq On : 08 Oct 2021 15:00  
 Operator : AJ\MA  
 Sample : M3990-09  
 Misc :  
 ALS Vial : 20 Sample Multiplier: 1

Instrument :  
 ECD\_P  
 ClientSampled :

Integration File signal 1: autoint1.e  
 Integration File signal 2: autoint2.e  
 Quant Time: Oct 08 17:46:31 2021  
 Quant Method : Z:\pestpcbsrv\HPCHEM1\ECD\_P\methods\PP100621.M  
 Quant Title : GC EXTRACTABLES  
 QLast Update : Fri Oct 08 04:46:38 2021  
 Response via : Initial Calibration  
 Integrator: ChemStation 6890 Scale Mode: Small noise peaks clipped

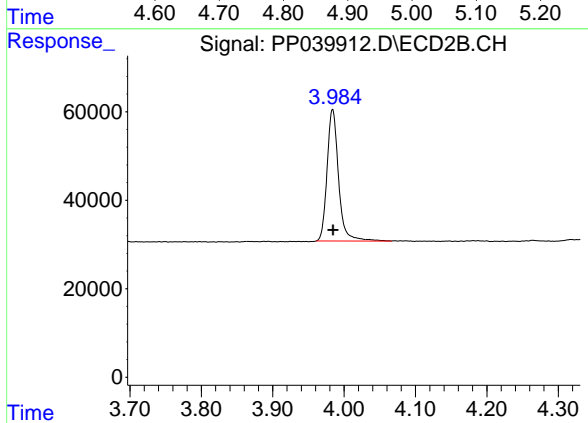
Volume Inj. : 2 µl  
 Signal #1 Phase : ZB-MR1 Signal #2 Phase: ZB-MR2  
 Signal #1 Info : 30Mx0.32mmx 0.50µ Signal #2 Info : 30M x 0.32mm x 0.25µm



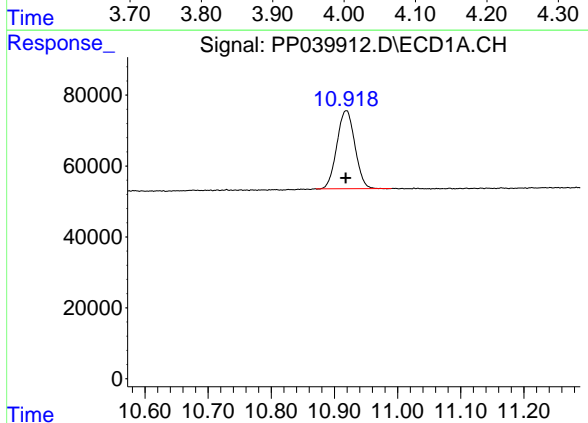


#1 Tetrachloro-m-xylene  
 R.T.: 4.896 min  
 Delta R.T.: 0.000 min  
 Response: 577728  
 Conc: 18.98 ng/ml

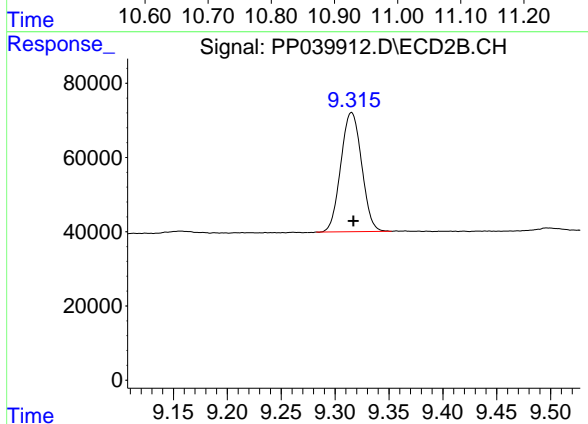
Instrument :  
 ECD\_P  
 ClientSampled :



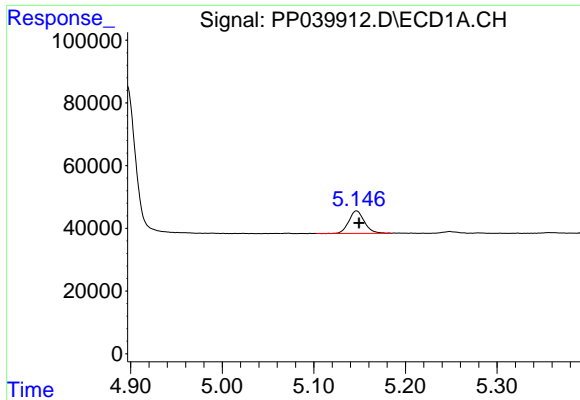
#1 Tetrachloro-m-xylene  
 R.T.: 3.984 min  
 Delta R.T.: 0.000 min  
 Response: 333166  
 Conc: 19.93 ng/ml



#2 Decachlorobiphenyl  
 R.T.: 10.919 min  
 Delta R.T.: 0.001 min  
 Response: 436105  
 Conc: 19.40 ng/ml

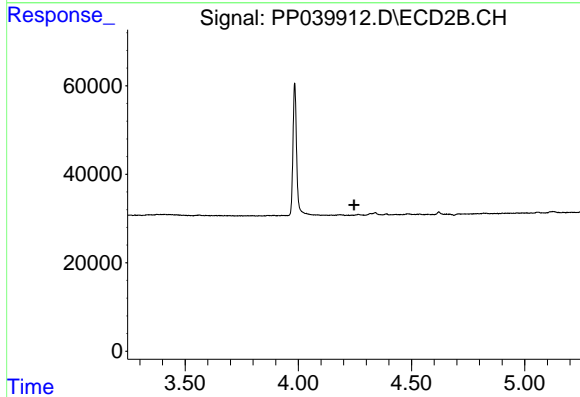


#2 Decachlorobiphenyl  
 R.T.: 9.315 min  
 Delta R.T.: -0.002 min  
 Response: 431856  
 Conc: 19.25 ng/ml

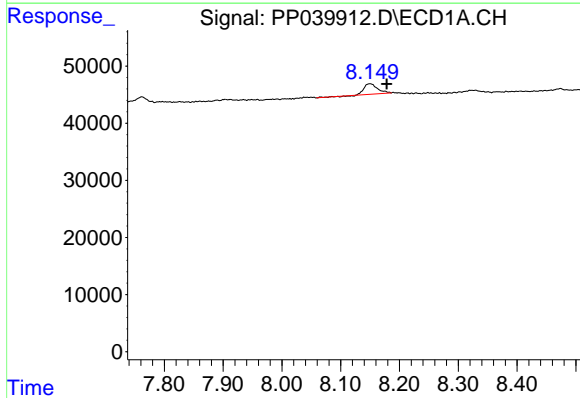


#8 AR-1221-1  
 R.T.: 5.147 min  
 Delta R.T.: -0.003 min  
 Response: 84454  
 Conc: 243.71 ng/ml

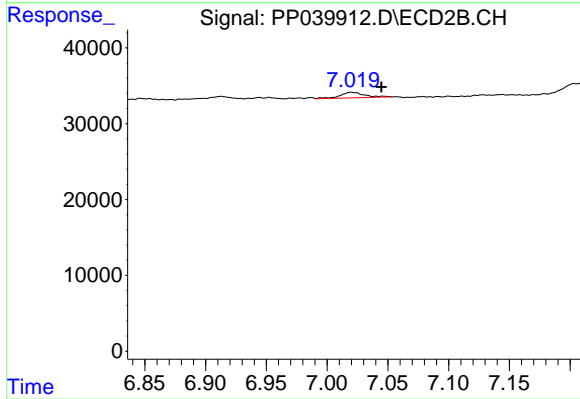
Instrument :  
 ECD\_P  
 ClientSampled :



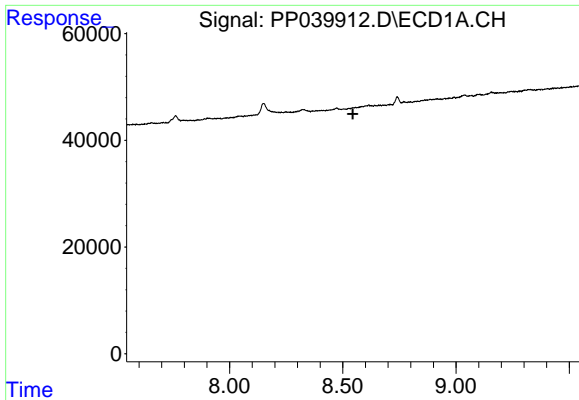
#8 AR-1221-1  
 R.T.: 0.000 min  
 Exp R.T. : 4.246 min  
 Response: 0  
 Conc: N.D.



#32 AR-1260-2  
 R.T.: 8.150 min  
 Delta R.T.: -0.028 min  
 Response: 29776  
 Conc: 18.56 ng/ml



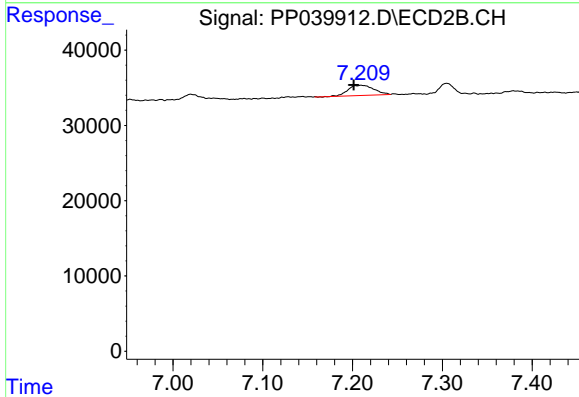
#32 AR-1260-2  
 R.T.: 7.020 min  
 Delta R.T.: -0.025 min  
 Response: 9971  
 Conc: 7.89 ng/ml



#33 AR-1260-3

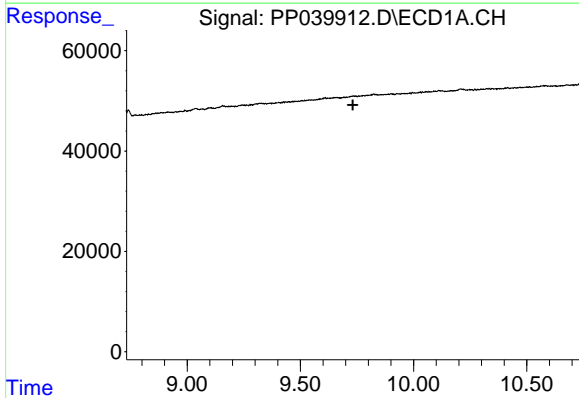
R.T.: 0.000 min  
 Exp R.T. : 8.544 min  
 Response: 0  
 Conc: N.D.

Instrument :  
 ECD\_P  
 ClientSampled :



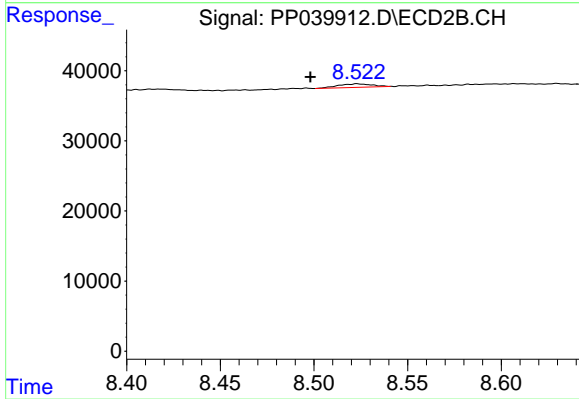
#33 AR-1260-3

R.T.: 7.210 min  
 Delta R.T.: 0.008 min  
 Response: 27053  
 Conc: 20.40 ng/ml



#43 AR-1268-3

R.T.: 0.000 min  
 Exp R.T. : 9.732 min  
 Response: 0  
 Conc: N.D.



#43 AR-1268-3

R.T.: 8.523 min  
 Delta R.T.: 0.025 min  
 Response: 6538  
 Conc: 2.79 ng/ml