

Data Path : Z:\pestpcbsrv\HPCHEM1\ECD\_P\Data\PP100824\  
 Data File : PP067600.D  
 Signal(s) : Signal #1: ECD1A.ch Signal #2: ECD2B.ch  
 Acq On : 08 Oct 2024 20:00  
 Operator : YP\AJ  
 Sample : AR1248ICC750  
 Misc :  
 ALS Vial : 16 Sample Multiplier: 1

**Instrument :**  
 ECD\_P  
**ClientSampleId :**  
 AR1248ICC750

Integration File signal 1: autoint1.e  
 Integration File signal 2: autoint2.e  
 Quant Time: Oct 09 02:54:50 2024  
 Quant Method : Z:\pestpcbsrv\HPCHEM1\ECD\_P\methods\PP100824.M  
 Quant Title : GC EXTRACTABLES  
 QLast Update : Wed Oct 09 02:51:34 2024  
 Response via : Initial Calibration  
 Integrator: ChemStation

Volume Inj. : 2 µl  
 Signal #1 Phase : ZB-MR1 Signal #2 Phase: ZB-MR2  
 Signal #1 Info : 30Mx0.32mmx 0.50µ Signal #2 Info : 30M x 0.32mm x 0.25µm

Compound	RT#1	RT#2	Resp#1	Resp#2	ng/ml	ng/ml
-----						
System Monitoring Compounds						
1) SA Tetrachlo...	4.754	4.052	69493624	74624596	72.855	74.581
2) SA Decachlor...	10.666	9.218	83225039	80485343	71.154	71.134
Target Compounds						
21) L5 AR-1248-1	5.917	5.160	15890474	16419683	725.581	718.146
22) L5 AR-1248-2	6.191	5.401	24196945	23698997	705.963	714.398
23) L5 AR-1248-3	6.396	5.445	26508671	24837498	704.586	716.061
24) L5 AR-1248-4	6.796	5.619	29562331	29080592	707.227	721.084
25) L5 AR-1248-5	6.837	6.017	29214949	26933596	712.838	716.014
-----						

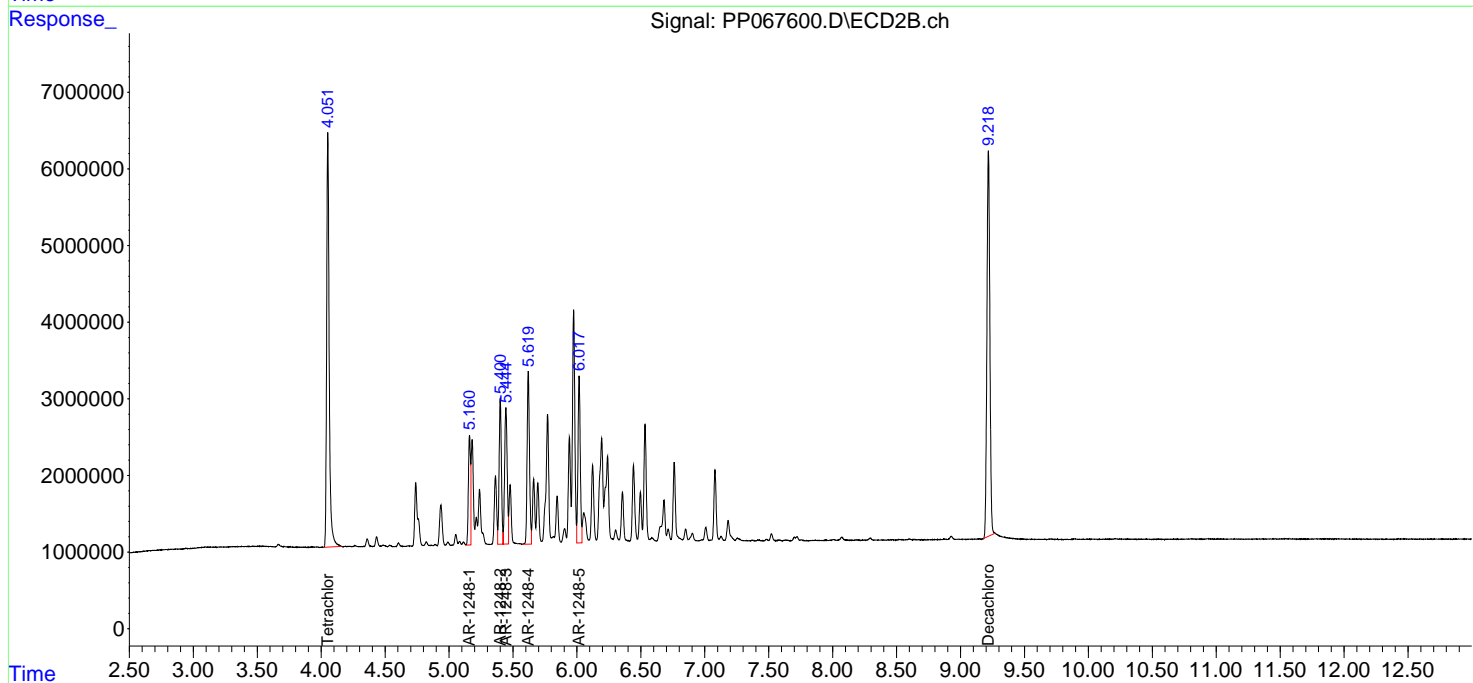
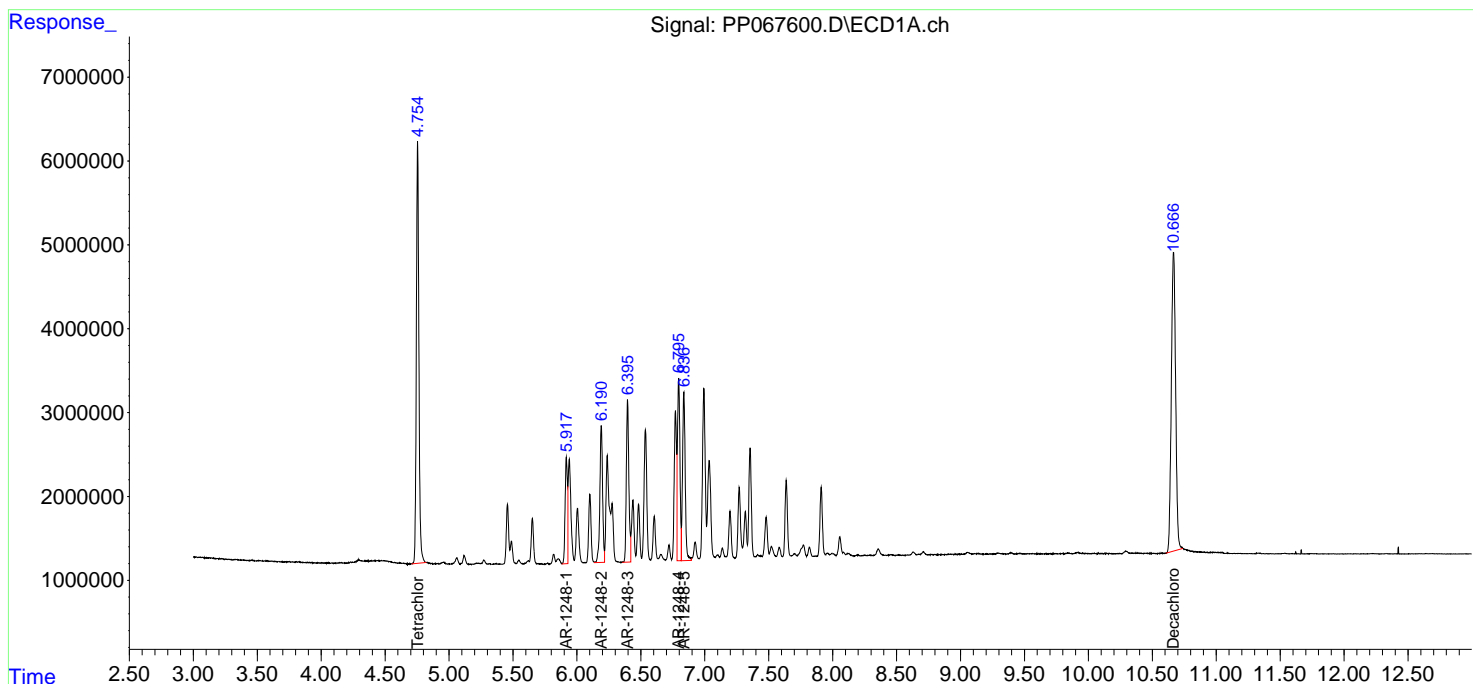
(f)=RT Delta > 1/2 Window (#)=Amounts differ by > 25% (m)=manual int.

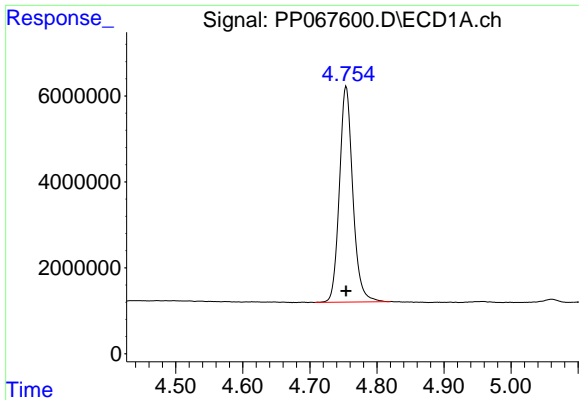
Data Path : Z:\pestpcbsrv\HPCHEM1\ECD\_P\Data\PP100824\  
 Data File : PP067600.D  
 Signal(s) : Signal #1: ECD1A.ch Signal #2: ECD2B.ch  
 Acq On : 08 Oct 2024 20:00  
 Operator : YP\AJ  
 Sample : AR1248ICC750  
 Misc :  
 ALS Vial : 16 Sample Multiplier: 1

Instrument :  
 ECD\_P  
 ClientSampleId :  
 AR1248ICC750

Integration File signal 1: autoint1.e  
 Integration File signal 2: autoint2.e  
 Quant Time: Oct 09 02:54:50 2024  
 Quant Method : Z:\pestpcbsrv\HPCHEM1\ECD\_P\methods\PP100824.M  
 Quant Title : GC EXTRACTABLES  
 QLast Update : Wed Oct 09 02:51:34 2024  
 Response via : Initial Calibration  
 Integrator: ChemStation

Volume Inj. : 2 µl  
 Signal #1 Phase : ZB-MR1 Signal #2 Phase: ZB-MR2  
 Signal #1 Info : 30Mx0.32mmx 0.50µ Signal #2 Info : 30M x 0.32mm x 0.25µm

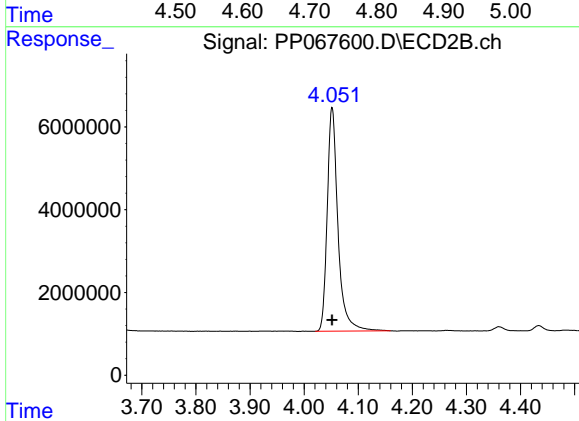




#1 Tetrachloro-m-xylene

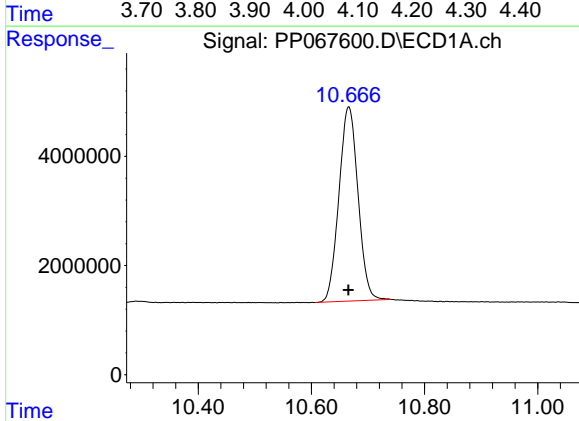
R.T.: 4.754 min  
 Delta R.T.: 0.000 min  
 Response: 69493624  
 Conc: 72.85 ng/ml

Instrument :  
 ECD\_P  
 ClientSampleId :  
 AR1248ICC750



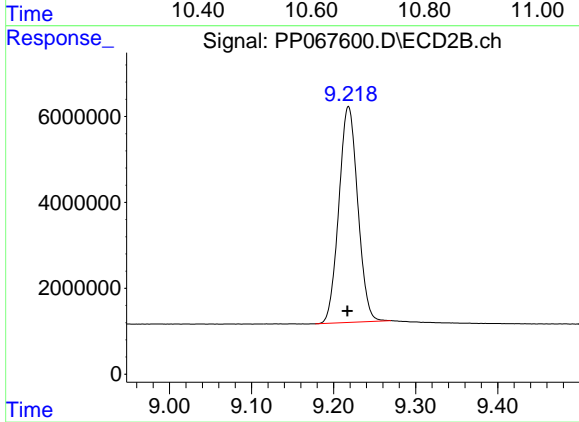
#1 Tetrachloro-m-xylene

R.T.: 4.052 min  
 Delta R.T.: 0.000 min  
 Response: 74624596  
 Conc: 74.58 ng/ml



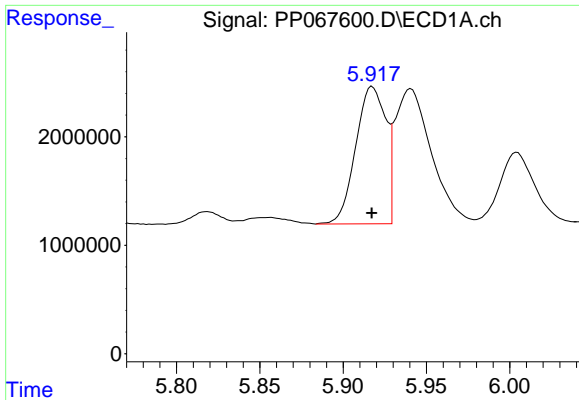
#2 Decachlorobiphenyl

R.T.: 10.666 min  
 Delta R.T.: 0.000 min  
 Response: 83225039  
 Conc: 71.15 ng/ml



#2 Decachlorobiphenyl

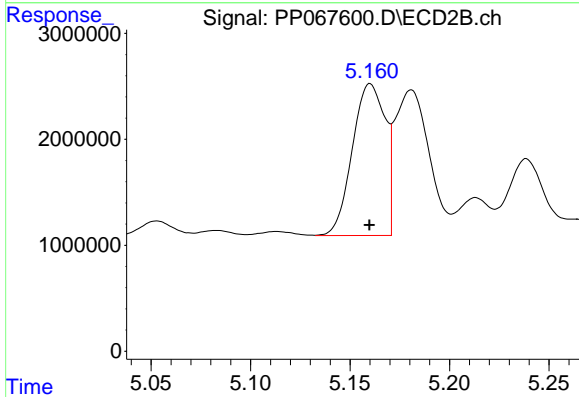
R.T.: 9.218 min  
 Delta R.T.: 0.001 min  
 Response: 80485343  
 Conc: 71.13 ng/ml



#21 AR-1248-1

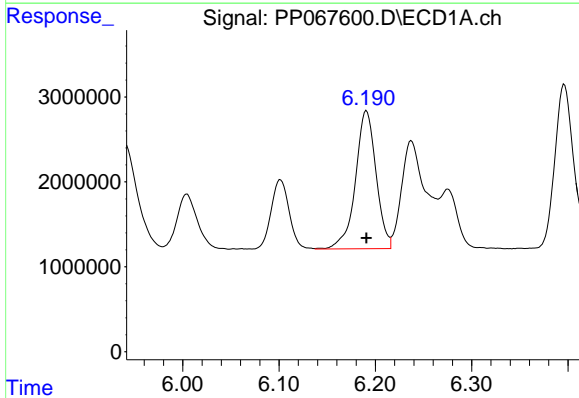
R.T.: 5.917 min  
 Delta R.T.: 0.000 min  
 Response: 15890474  
 Conc: 725.58 ng/ml

Instrument :  
 ECD\_P  
 ClientSampleId :  
 AR1248ICC750



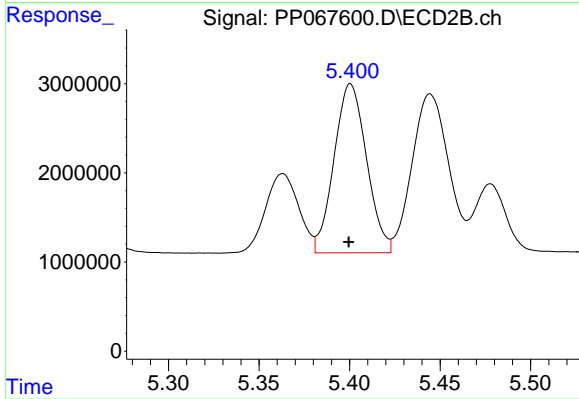
#21 AR-1248-1

R.T.: 5.160 min  
 Delta R.T.: 0.000 min  
 Response: 16419683  
 Conc: 718.15 ng/ml



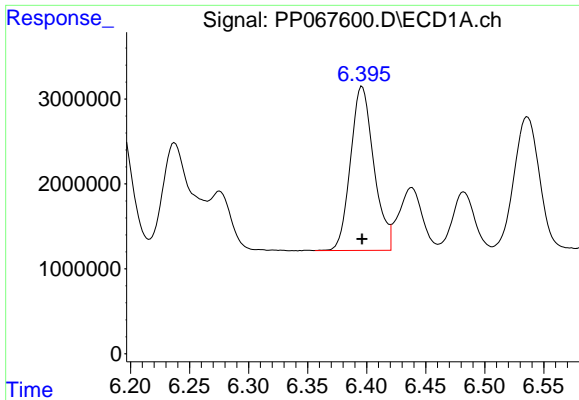
#22 AR-1248-2

R.T.: 6.191 min  
 Delta R.T.: 0.000 min  
 Response: 24196945  
 Conc: 705.96 ng/ml



#22 AR-1248-2

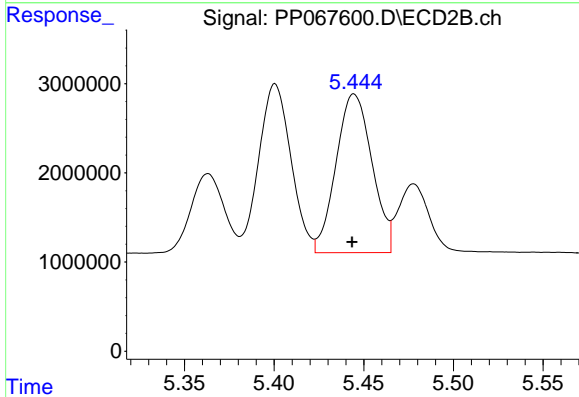
R.T.: 5.401 min  
 Delta R.T.: 0.000 min  
 Response: 23698997  
 Conc: 714.40 ng/ml



#23 AR-1248-3

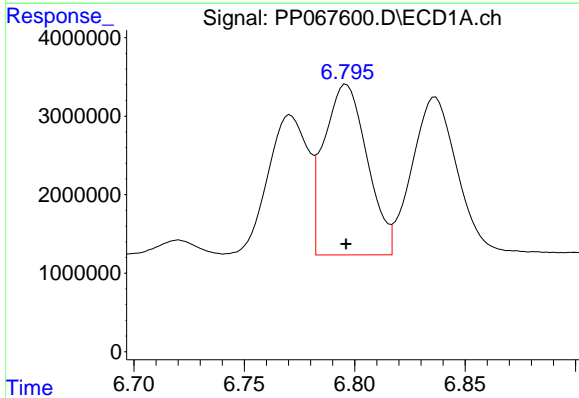
R.T.: 6.396 min  
 Delta R.T.: 0.000 min  
 Response: 26508671  
 Conc: 704.59 ng/ml

Instrument :  
 ECD\_P  
 ClientSampleId :  
 AR1248ICC750



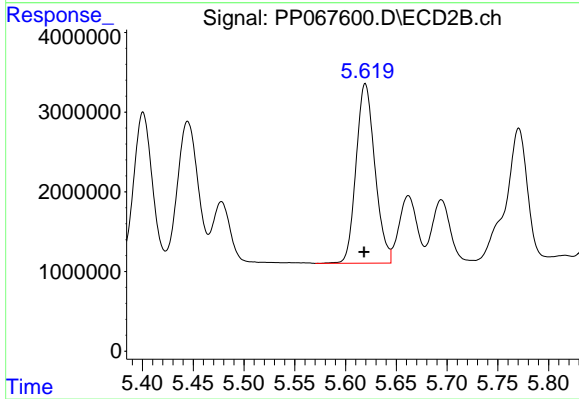
#23 AR-1248-3

R.T.: 5.445 min  
 Delta R.T.: 0.001 min  
 Response: 24837498  
 Conc: 716.06 ng/ml



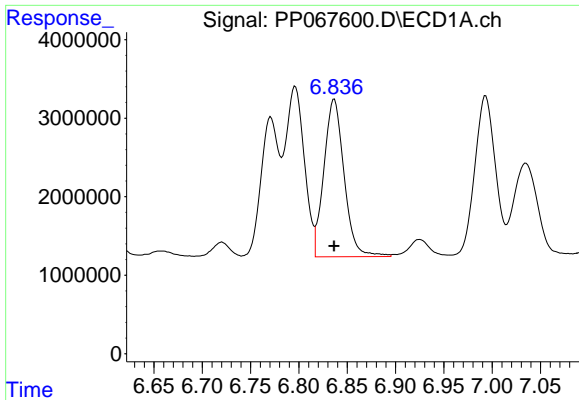
#24 AR-1248-4

R.T.: 6.796 min  
 Delta R.T.: 0.000 min  
 Response: 29562331  
 Conc: 707.23 ng/ml



#24 AR-1248-4

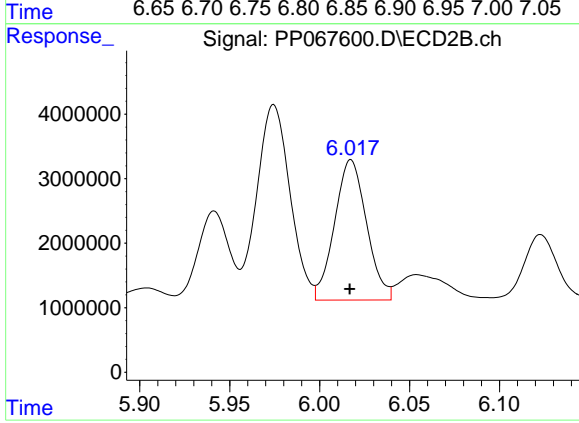
R.T.: 5.619 min  
 Delta R.T.: 0.001 min  
 Response: 29080592  
 Conc: 721.08 ng/ml



#25 AR-1248-5

R.T.: 6.837 min  
 Delta R.T.: 0.000 min  
 Response: 29214949  
 Conc: 712.84 ng/ml

Instrument :  
 ECD\_P  
 ClientSampleId :  
 AR1248ICC750



#25 AR-1248-5

R.T.: 6.017 min  
 Delta R.T.: 0.000 min  
 Response: 26933596  
 Conc: 716.01 ng/ml