

Data Path : Z:\pestpcbsrv\HPCHEM1\ECD_P\Data\PP100824\
 Data File : PP067609.D
 Signal(s) : Signal #1: ECD1A.ch Signal #2: ECD2B.ch
 Acq On : 08 Oct 2024 22:25
 Operator : YP\AJ
 Sample : AR1262ICC500
 Misc :
 ALS Vial : 25 Sample Multiplier: 1

Instrument :
 ECD_P
ClientSampleId :
 AR1262ICC500

Integration File signal 1: autoint1.e
 Integration File signal 2: autoint2.e
 Quant Time: Oct 09 04:02:26 2024
 Quant Method : Z:\pestpcbsrv\HPCHEM1\ECD_P\methods\PP100824.M
 Quant Title : GC EXTRACTABLES
 QLast Update : Wed Oct 09 04:00:50 2024
 Response via : Initial Calibration
 Integrator: ChemStation

Volume Inj. : 2 µl
 Signal #1 Phase : ZB-MR1 Signal #2 Phase: ZB-MR2
 Signal #1 Info : 30Mx0.32mmx 0.50µ Signal #2 Info : 30M x 0.32mm x 0.25µm

Compound	RT#1	RT#2	Resp#1	Resp#2	ng/ml	ng/ml

System Monitoring Compounds						
1) SA Tetrachlo...	4.753	4.051	46189834	49400193	50.000	50.000
2) SA Decachlor...	10.664	9.217	57664981	56385121	50.000	50.000
Target Compounds						
36) L8 AR-1262-1	8.373	7.219	35885658	39336733	500.000	500.000
37) L8 AR-1262-2	8.709	7.482	60790127	35481005	500.000	500.000
38) L8 AR-1262-3	9.049	8.007	44257088	28549651	500.669	500.000
39) L8 AR-1262-4	9.140	8.070	34972436	50218224	500.000	500.000
40) L8 AR-1262-5	9.842	8.598	23395635	25008878	500.000	500.000

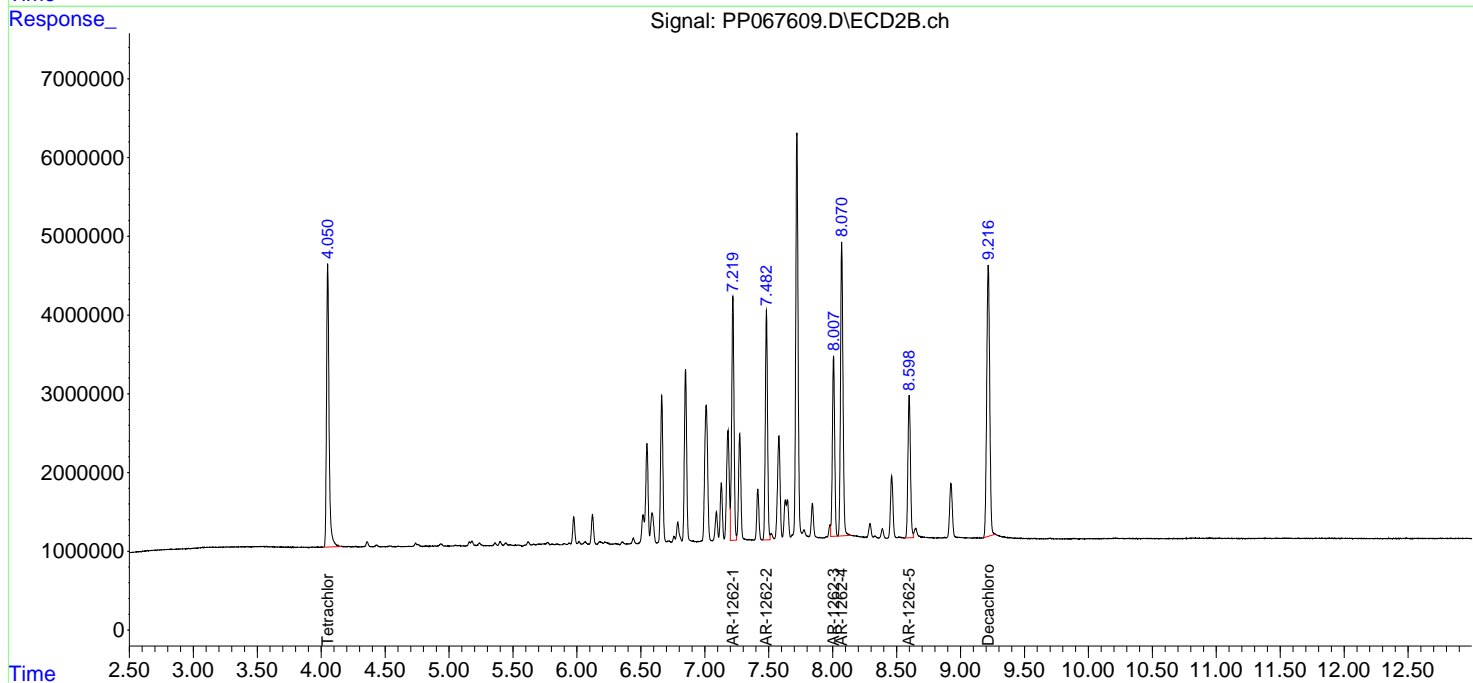
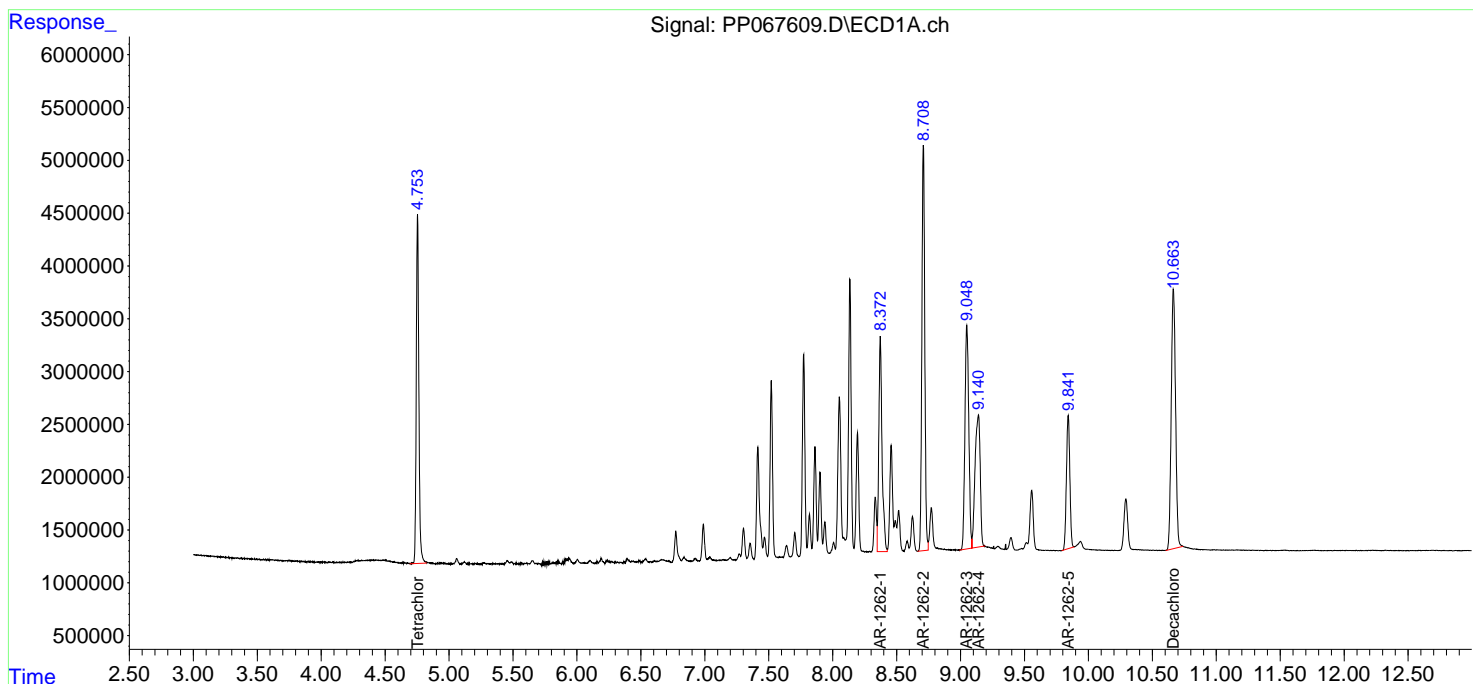
(f)=RT Delta > 1/2 Window (#)=Amounts differ by > 25% (m)=manual int.

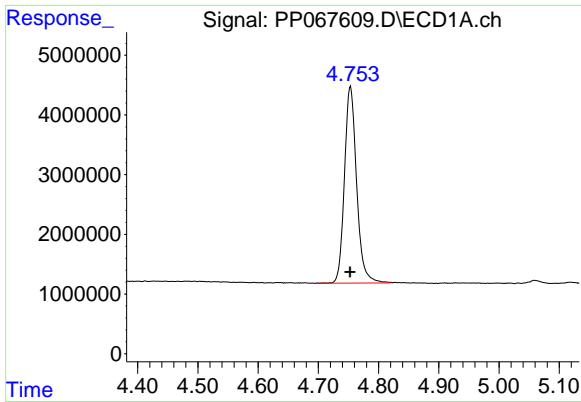
Data Path : Z:\pestpcbsrv\HPCHEM1\ECD_P\Data\PP100824\
 Data File : PP067609.D
 Signal(s) : Signal #1: ECD1A.ch Signal #2: ECD2B.ch
 Acq On : 08 Oct 2024 22:25
 Operator : YP\AJ
 Sample : AR1262ICC500
 Misc :
 ALS Vial : 25 Sample Multiplier: 1

Instrument :
 ECD_P
 ClientSampleId :
 AR1262ICC500

Integration File signal 1: autoint1.e
 Integration File signal 2: autoint2.e
 Quant Time: Oct 09 04:02:26 2024
 Quant Method : Z:\pestpcbsrv\HPCHEM1\ECD_P\methods\PP100824.M
 Quant Title : GC EXTRACTABLES
 QLast Update : Wed Oct 09 04:00:50 2024
 Response via : Initial Calibration
 Integrator: ChemStation

Volume Inj. : 2 µl
 Signal #1 Phase : ZB-MR1 Signal #2 Phase: ZB-MR2
 Signal #1 Info : 30Mx0.32mmx 0.50µ Signal #2 Info : 30M x 0.32mm x 0.25µm

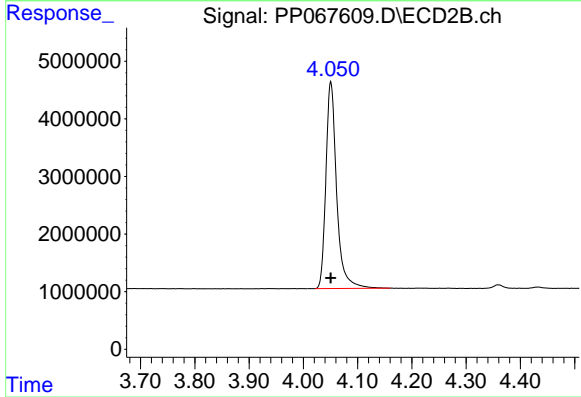




#1 Tetrachloro-m-xylene

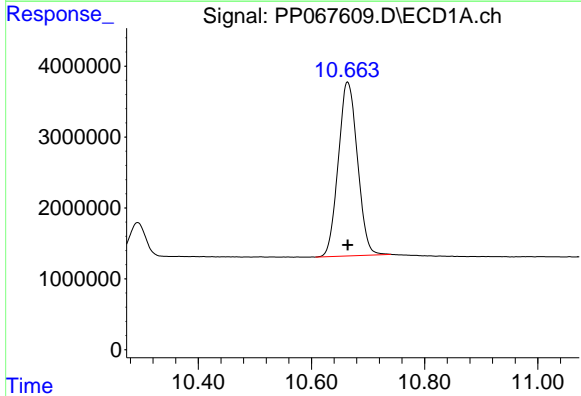
R.T.: 4.753 min
 Delta R.T.: 0.000 min
 Response: 46189834
 Conc: 50.00 ng/ml

Instrument :
 ECD_P
 ClientSampleId :
 AR1262ICC500



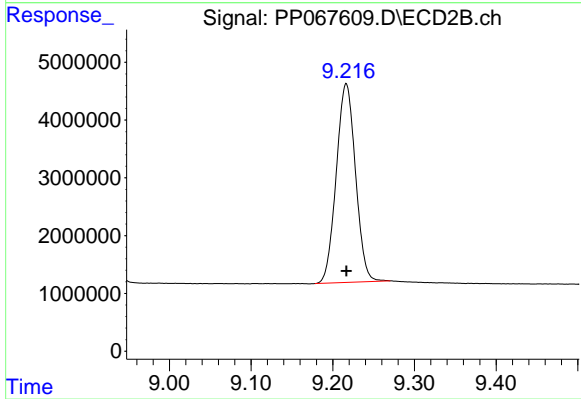
#1 Tetrachloro-m-xylene

R.T.: 4.051 min
 Delta R.T.: 0.000 min
 Response: 49400193
 Conc: 50.00 ng/ml



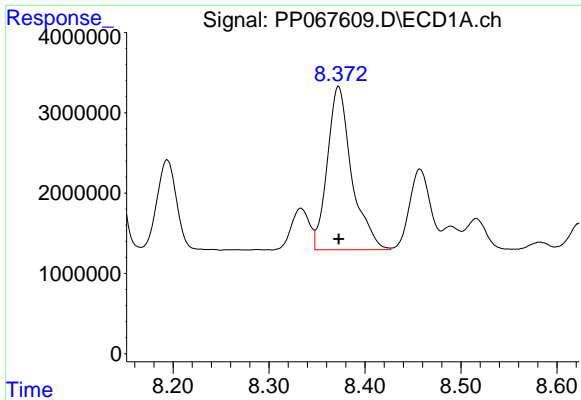
#2 Decachlorobiphenyl

R.T.: 10.664 min
 Delta R.T.: 0.000 min
 Response: 57664981
 Conc: 50.00 ng/ml



#2 Decachlorobiphenyl

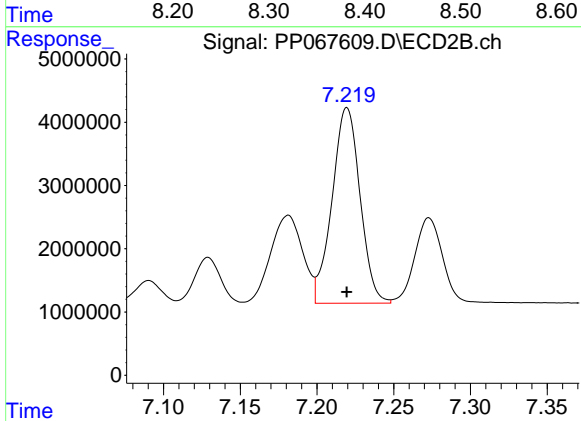
R.T.: 9.217 min
 Delta R.T.: 0.000 min
 Response: 56385121
 Conc: 50.00 ng/ml



#36 AR-1262-1

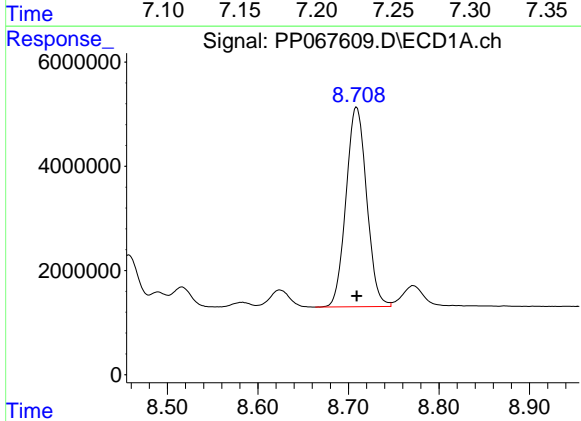
R.T.: 8.373 min
 Delta R.T.: 0.000 min
 Response: 35885658
 Conc: 500.00 ng/ml

Instrument :
 ECD_P
 ClientSampleId :
 AR1262ICC500



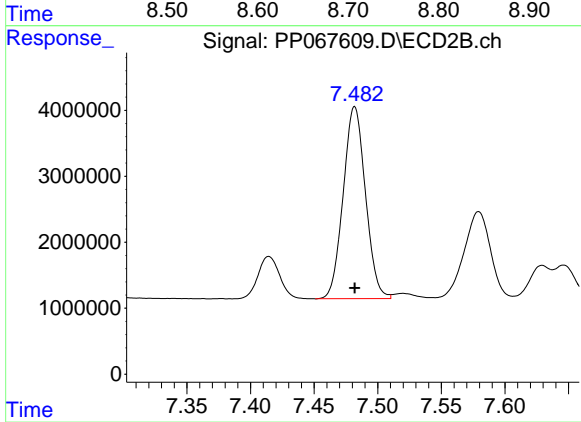
#36 AR-1262-1

R.T.: 7.219 min
 Delta R.T.: 0.000 min
 Response: 39336733
 Conc: 500.00 ng/ml



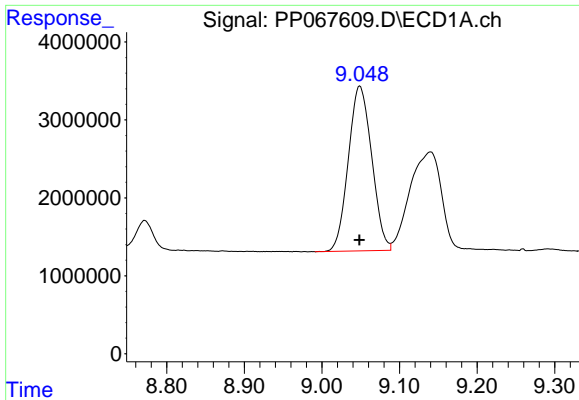
#37 AR-1262-2

R.T.: 8.709 min
 Delta R.T.: 0.000 min
 Response: 60790127
 Conc: 500.00 ng/ml



#37 AR-1262-2

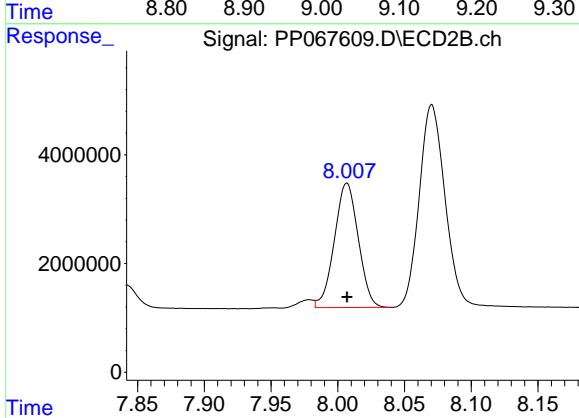
R.T.: 7.482 min
 Delta R.T.: 0.000 min
 Response: 35481005
 Conc: 500.00 ng/ml



#38 AR-1262-3

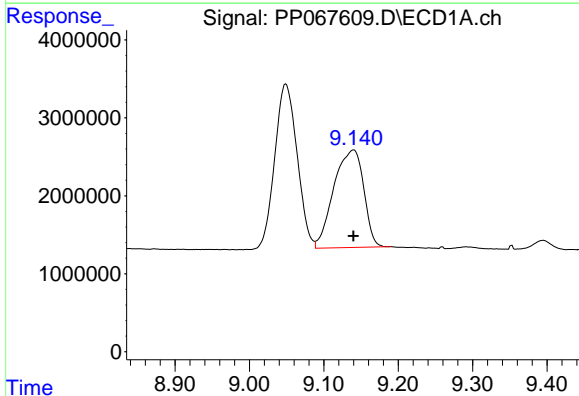
R.T.: 9.049 min
Delta R.T.: 0.000 min
Response: 44257088
Conc: 500.67 ng/ml

Instrument :
ECD_P
ClientSampleId :
AR1262ICC500



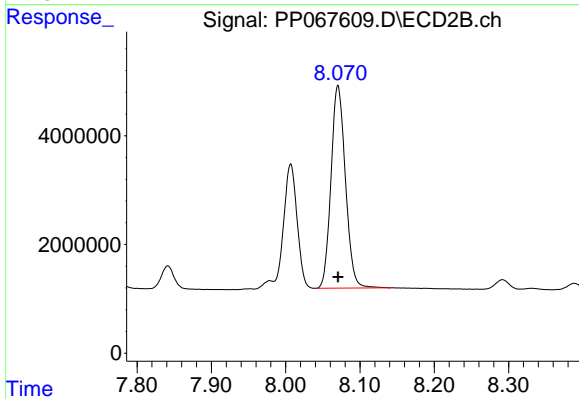
#38 AR-1262-3

R.T.: 8.007 min
Delta R.T.: 0.000 min
Response: 28549651
Conc: 500.00 ng/ml



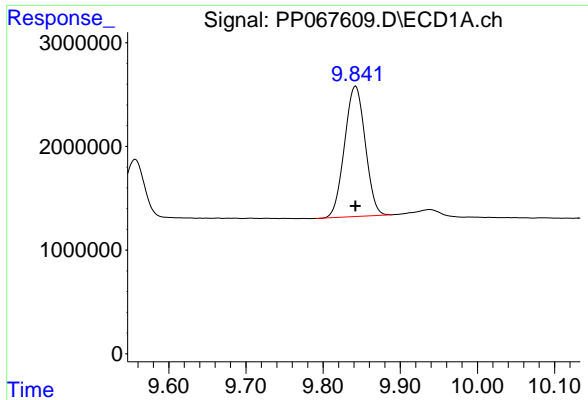
#39 AR-1262-4

R.T.: 9.140 min
Delta R.T.: 0.000 min
Response: 34972436
Conc: 500.00 ng/ml



#39 AR-1262-4

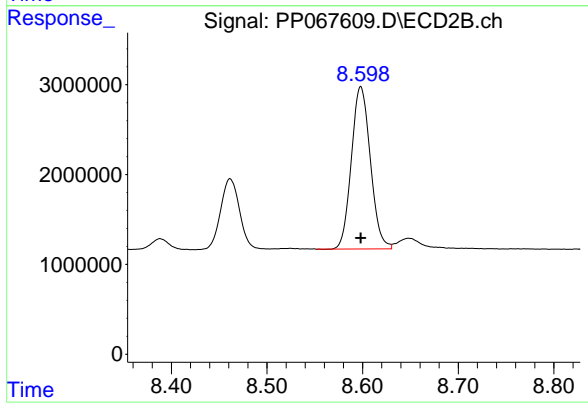
R.T.: 8.070 min
Delta R.T.: 0.000 min
Response: 50218224
Conc: 500.00 ng/ml



#40 AR-1262-5

R.T.: 9.842 min
Delta R.T.: 0.000 min
Response: 23395635
Conc: 500.00 ng/ml

Instrument :
ECD_P
ClientSampleId :
AR1262ICC500



#40 AR-1262-5

R.T.: 8.598 min
Delta R.T.: 0.000 min
Response: 25008878
Conc: 500.00 ng/ml