

Data Path : Z:\pestpcbsrv\HPCHEM1\ECD_P\Data\PP100824\
 Data File : PP067595.D
 Signal(s) : Signal #1: ECD1A.ch Signal #2: ECD2B.ch
 Acq On : 08 Oct 2024 18:39
 Operator : YP\AJ
 Sample : AR1242ICC750
 Misc :
 ALS Vial : 11 Sample Multiplier: 1

Instrument :
 ECD_P
ClientSampleId :
 AR1242ICC750

Integration File signal 1: autoint1.e
 Integration File signal 2: autoint2.e
 Quant Time: Oct 09 02:27:33 2024
 Quant Method : Z:\pestpcbsrv\HPCHEM1\ECD_P\methods\PP100824.M
 Quant Title : GC EXTRACTABLES
 QLast Update : Wed Oct 09 02:22:02 2024
 Response via : Initial Calibration
 Integrator: ChemStation

Volume Inj. : 2 µl
 Signal #1 Phase : ZB-MR1 Signal #2 Phase: ZB-MR2
 Signal #1 Info : 30Mx0.32mmx 0.50µ Signal #2 Info : 30M x 0.32mm x 0.25µm

Compound	RT#1	RT#2	Resp#1	Resp#2	ng/ml	ng/ml

System Monitoring Compounds						
1) SA Tetrachlo...	4.755	4.052	70898933	75665842	71.606	72.171
2) SA Decachlor...	10.668	9.219	82232389	80586319	69.477	70.430
Target Compounds						
16) L4 AR-1242-1	5.919	5.161	20265133	20927105	701.697	695.657
17) L4 AR-1242-2	5.942	5.181	29640040	28743138	708.698	703.535
18) L4 AR-1242-3	6.005	5.362	19473731	16384813	704.881	700.525
19) L4 AR-1242-4	6.104	5.445	15657914	17086039	711.074	693.602
20) L4 AR-1242-5	6.838	5.975	17483030	20589128	713.758	713.413

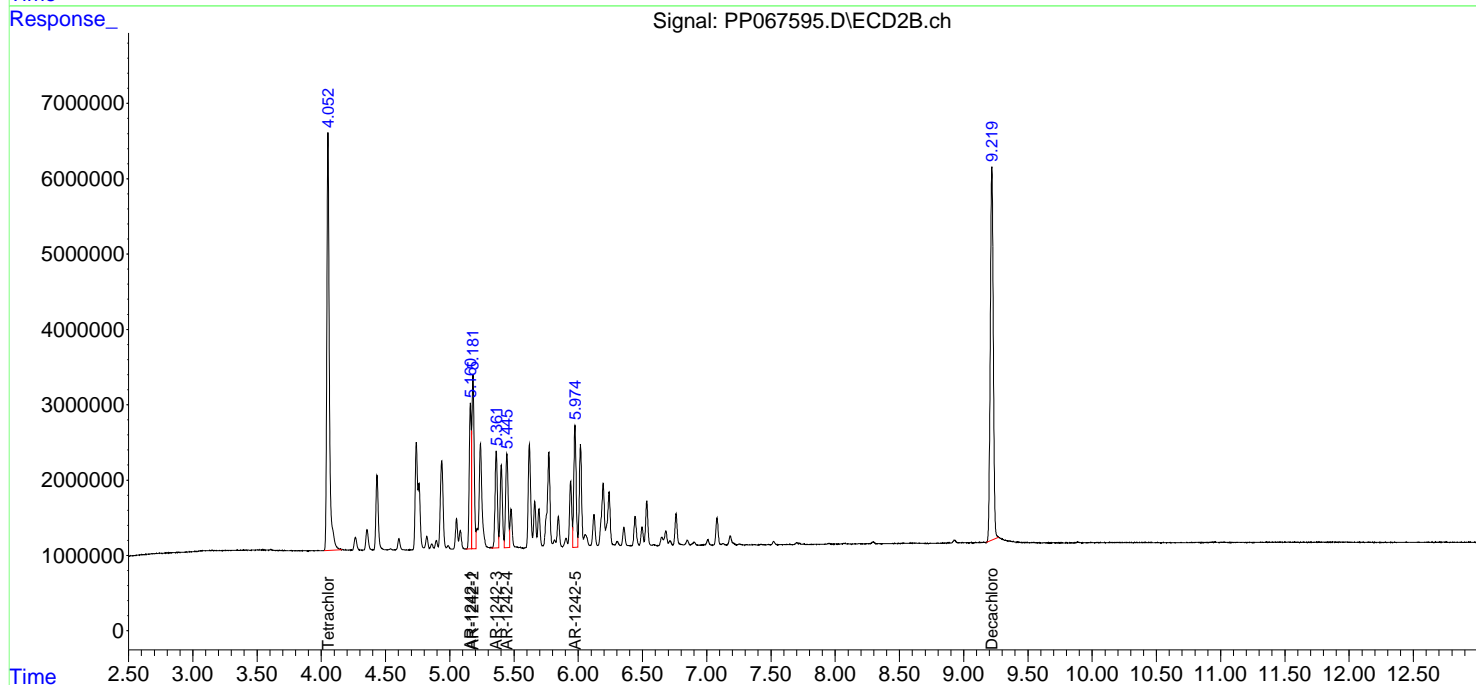
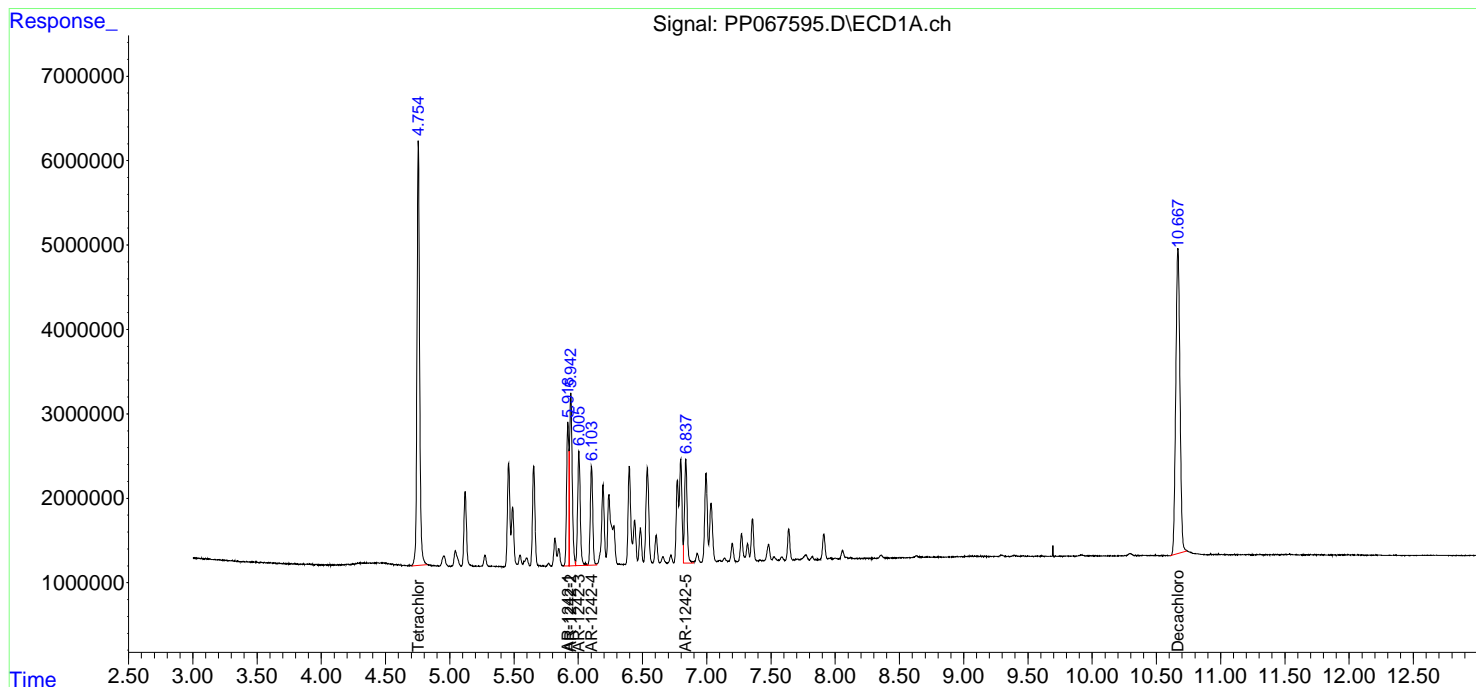
(f)=RT Delta > 1/2 Window (#)=Amounts differ by > 25% (m)=manual int.

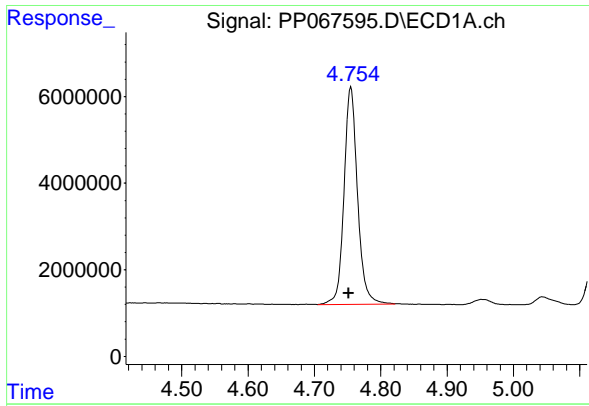
Data Path : Z:\pestpcbsrv\HPCHEM1\ECD_P\Data\PP100824\
 Data File : PP067595.D
 Signal(s) : Signal #1: ECD1A.ch Signal #2: ECD2B.ch
 Acq On : 08 Oct 2024 18:39
 Operator : YP\AJ
 Sample : AR1242ICC750
 Misc :
 ALS Vial : 11 Sample Multiplier: 1

Instrument :
 ECD_P
 ClientSampleId :
 AR1242ICC750

Integration File signal 1: autoint1.e
 Integration File signal 2: autoint2.e
 Quant Time: Oct 09 02:27:33 2024
 Quant Method : Z:\pestpcbsrv\HPCHEM1\ECD_P\methods\PP100824.M
 Quant Title : GC EXTRACTABLES
 QLast Update : Wed Oct 09 02:22:02 2024
 Response via : Initial Calibration
 Integrator: ChemStation

Volume Inj. : 2 µl
 Signal #1 Phase : ZB-MR1 Signal #2 Phase: ZB-MR2
 Signal #1 Info : 30Mx0.32mmx 0.50µm Signal #2 Info : 30M x 0.32mm x 0.25µm

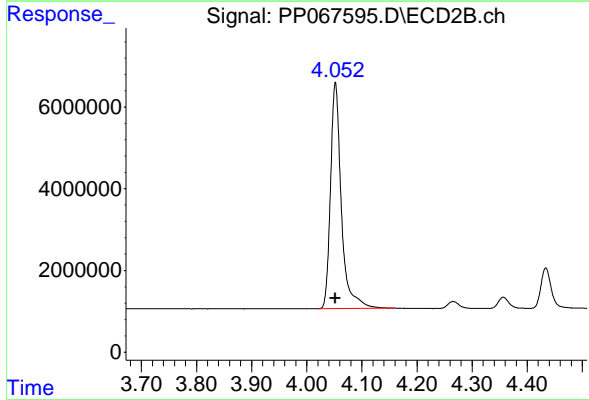




#1 Tetrachloro-m-xylene

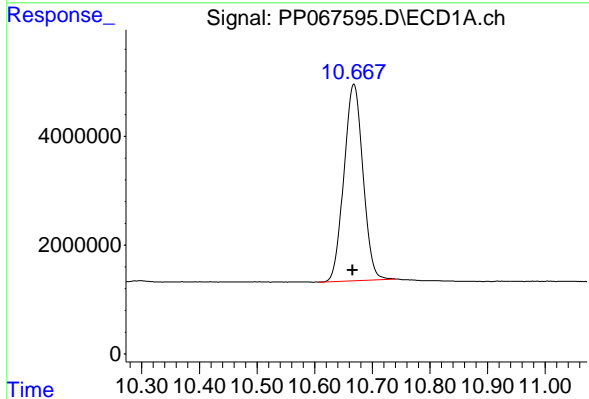
R.T.: 4.755 min
 Delta R.T.: 0.003 min
 Response: 70898933
 Conc: 71.61 ng/ml

Instrument :
 ECD_P
 ClientSampleId :
 AR1242ICC750



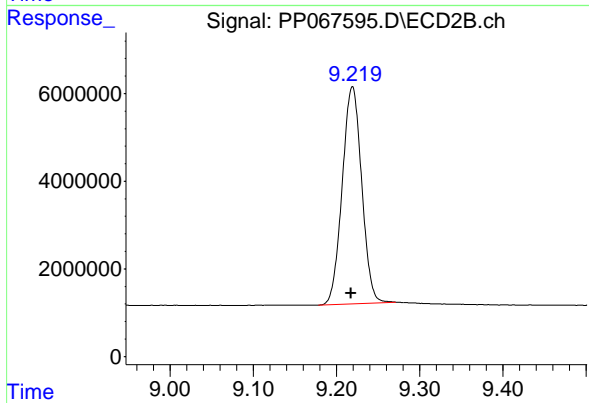
#1 Tetrachloro-m-xylene

R.T.: 4.052 min
 Delta R.T.: 0.000 min
 Response: 75665842
 Conc: 72.17 ng/ml



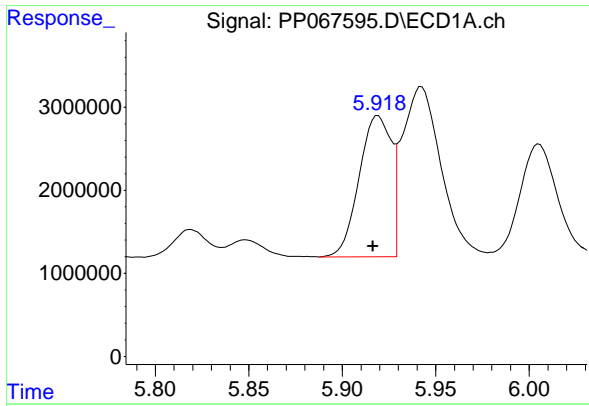
#2 Decachlorobiphenyl

R.T.: 10.668 min
 Delta R.T.: 0.002 min
 Response: 82232389
 Conc: 69.48 ng/ml



#2 Decachlorobiphenyl

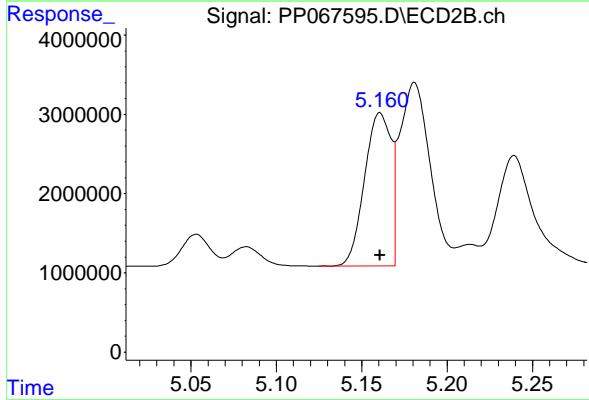
R.T.: 9.219 min
 Delta R.T.: 0.002 min
 Response: 80586319
 Conc: 70.43 ng/ml



#16 AR-1242-1

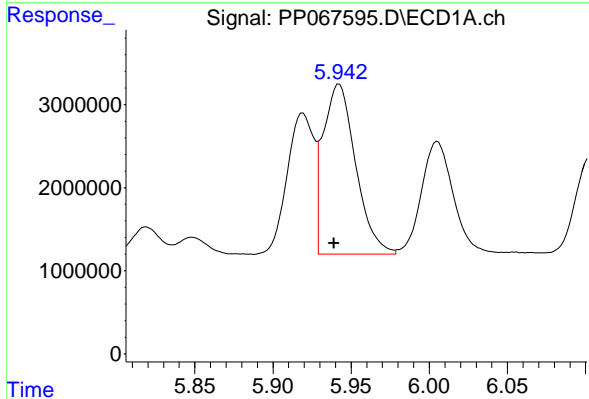
R.T.: 5.919 min
 Delta R.T.: 0.003 min
 Response: 20265133
 Conc: 701.70 ng/ml

Instrument :
 ECD_P
 ClientSampleId :
 AR1242ICC750



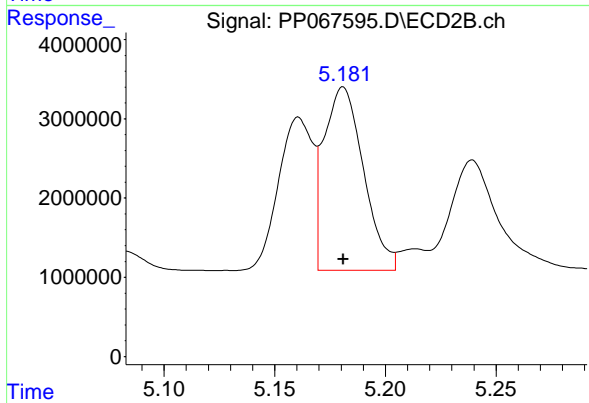
#16 AR-1242-1

R.T.: 5.161 min
 Delta R.T.: 0.000 min
 Response: 20927105
 Conc: 695.66 ng/ml



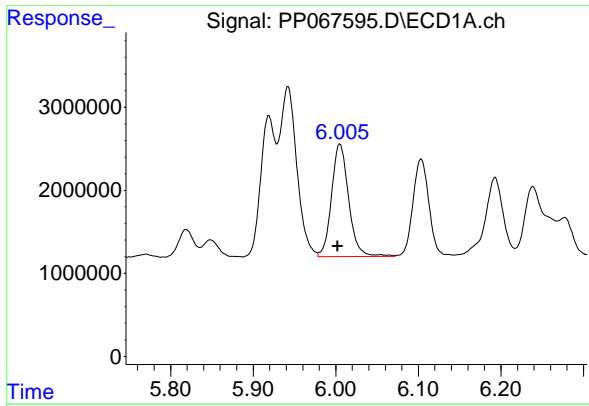
#17 AR-1242-2

R.T.: 5.942 min
 Delta R.T.: 0.003 min
 Response: 29640040
 Conc: 708.70 ng/ml



#17 AR-1242-2

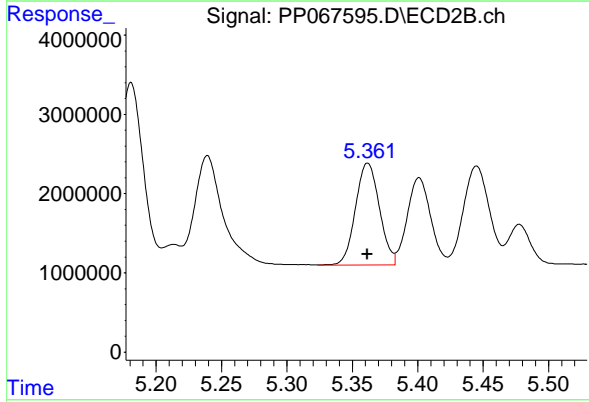
R.T.: 5.181 min
 Delta R.T.: 0.000 min
 Response: 28743138
 Conc: 703.54 ng/ml



#18 AR-1242-3

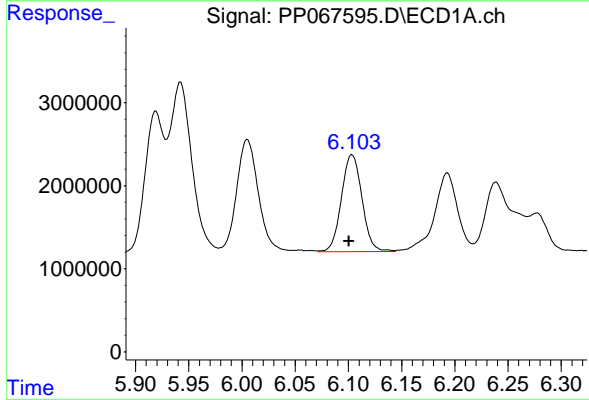
R.T.: 6.005 min
 Delta R.T.: 0.003 min
 Response: 19473731
 Conc: 704.88 ng/ml

Instrument :
 ECD_P
 ClientSampleId :
 AR1242ICC750



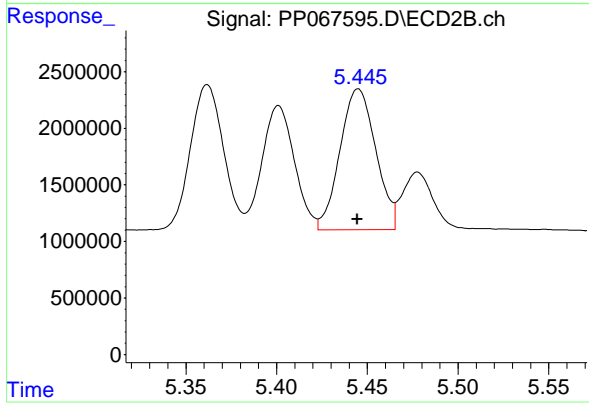
#18 AR-1242-3

R.T.: 5.362 min
 Delta R.T.: 0.000 min
 Response: 16384813
 Conc: 700.53 ng/ml



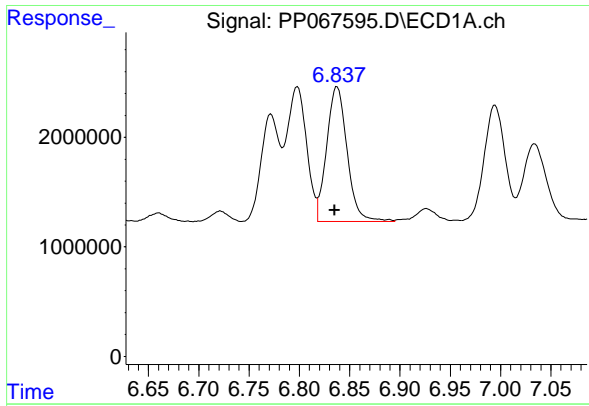
#19 AR-1242-4

R.T.: 6.104 min
 Delta R.T.: 0.003 min
 Response: 15657914
 Conc: 711.07 ng/ml



#19 AR-1242-4

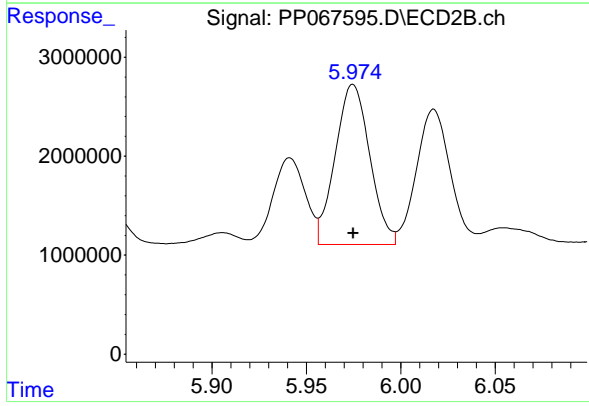
R.T.: 5.445 min
 Delta R.T.: 0.000 min
 Response: 17086039
 Conc: 693.60 ng/ml



#20 AR-1242-5

R.T.: 6.838 min
 Delta R.T.: 0.002 min
 Response: 17483030
 Conc: 713.76 ng/ml

Instrument :
 ECD_P
 ClientSampleId :
 AR1242ICC750



#20 AR-1242-5

R.T.: 5.975 min
 Delta R.T.: 0.000 min
 Response: 20589128
 Conc: 713.41 ng/ml