

Data Path : Z:\pestpcbsrv\HPCHEM1\ECD_P\Data\PP100924\
 Data File : PP067625.D
 Signal(s) : Signal #1: ECD1A.ch Signal #2: ECD2B.ch
 Acq On : 09 Oct 2024 10:13
 Operator : YP\AJ
 Sample : I.BLK
 Misc :
 ALS Vial : 2 Sample Multiplier: 1

Instrument :
 ECD_P
 ClientSampleId :
 I.BLK

Integration File signal 1: autoint1.e
 Integration File signal 2: autoint2.e
 Quant Time: Oct 09 12:42:55 2024
 Quant Method : Z:\pestpcbsrv\HPCHEM1\ECD_P\methods\PP100824.M
 Quant Title : GC EXTRACTABLES
 QLast Update : Wed Oct 09 05:48:32 2024
 Response via : Initial Calibration
 Integrator: ChemStation

Volume Inj. : 2 µl
 Signal #1 Phase : ZB-MR1 Signal #2 Phase: ZB-MR2
 Signal #1 Info : 30Mx0.32mmx 0.50µ Signal #2 Info : 30M x 0.32mm x 0.25µm

Compound	RT#1	RT#2	Resp#1	Resp#2	ng/ml	ng/ml

System Monitoring Compounds						
1) SA Tetrachlo...	4.754	4.052	21142102	22007556	22.840	21.781
2) SA Decachlor...	10.664	9.216	28036403	26966049	24.352	24.046

Target Compounds

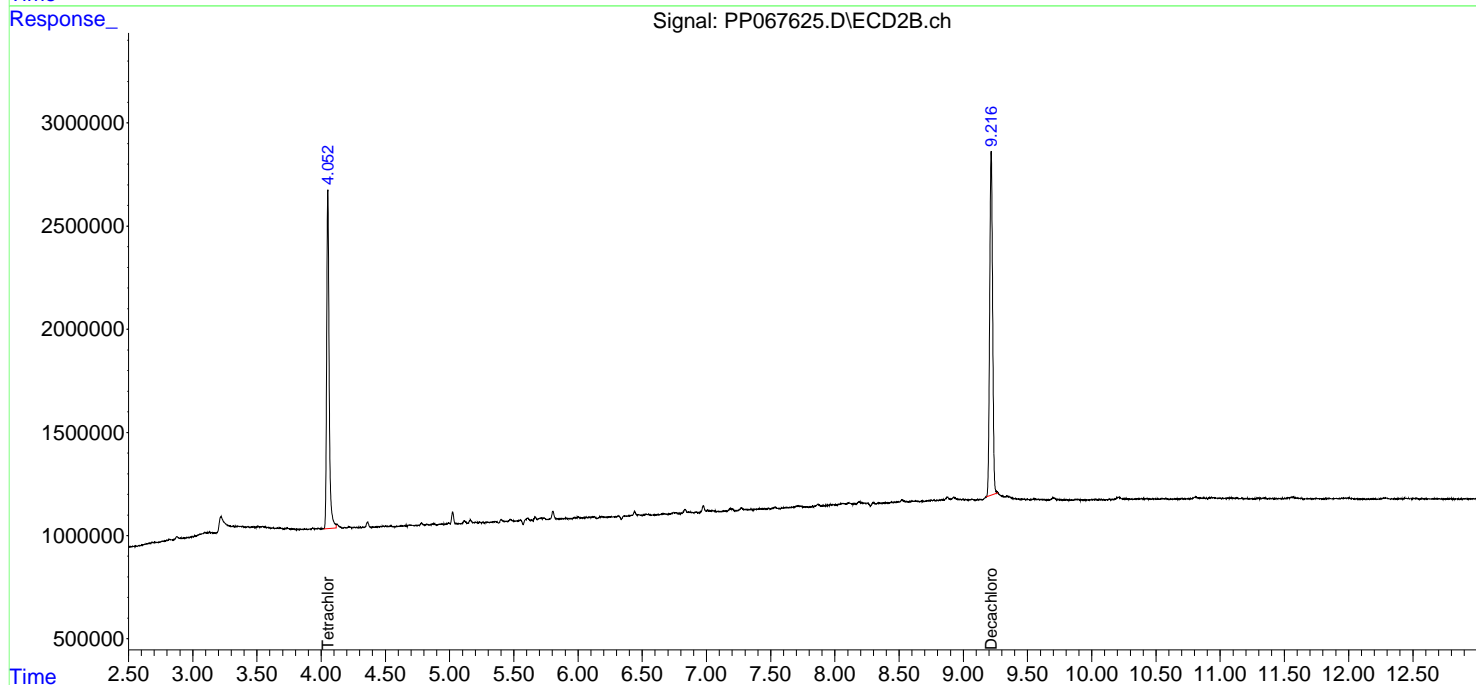
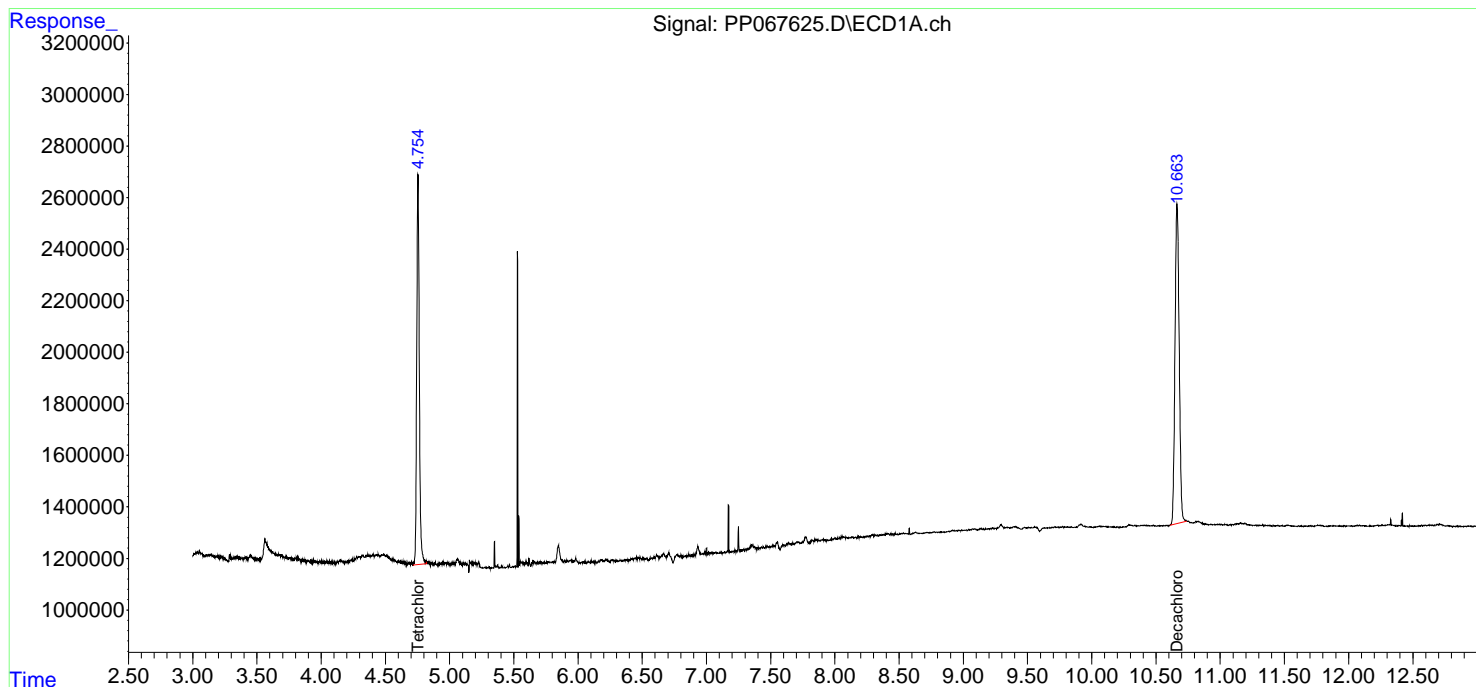
(f)=RT Delta > 1/2 Window (#)=Amounts differ by > 25% (m)=manual int.

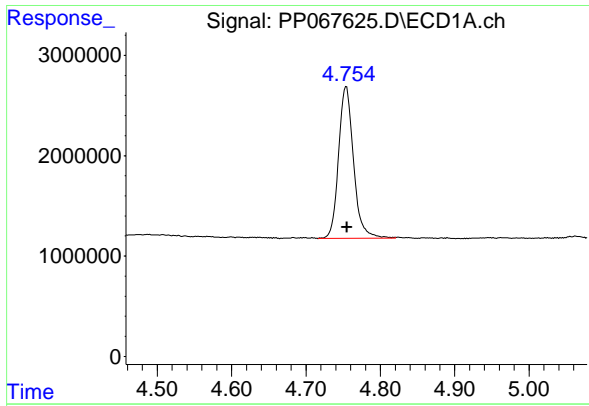
Data Path : Z:\pestpcbsrv\HPCHEM1\ECD_P\Data\PP100924\
Data File : PP067625.D
Signal(s) : Signal #1: ECD1A.ch Signal #2: ECD2B.ch
Acq On : 09 Oct 2024 10:13
Operator : YP\AJ
Sample : I.BLK
Misc :
ALS Vial : 2 Sample Multiplier: 1

Instrument :
ECD_P
ClientSampleId :
I.BLK

Integration File signal 1: autoint1.e
Integration File signal 2: autoint2.e
Quant Time: Oct 09 12:42:55 2024
Quant Method : Z:\pestpcbsrv\HPCHEM1\ECD_P\methods\PP100824.M
Quant Title : GC EXTRACTABLES
QLast Update : Wed Oct 09 05:48:32 2024
Response via : Initial Calibration
Integrator: ChemStation

Volume Inj. : 2 µl
Signal #1 Phase : ZB-MR1 Signal #2 Phase: ZB-MR2
Signal #1 Info : 30Mx0.32mmx 0.50µm Signal #2 Info : 30M x 0.32mm x 0.25µm

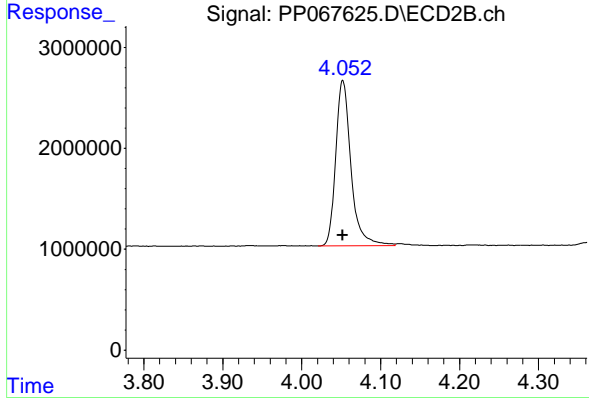




#1 Tetrachloro-m-xylene

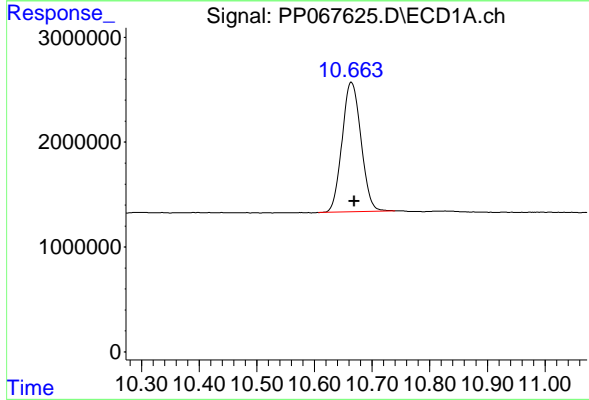
R.T.: 4.754 min
 Delta R.T.: 0.000 min
 Response: 21142102
 Conc: 22.84 ng/ml

Instrument :
 ECD_P
 ClientSampleId :
 I.BLK



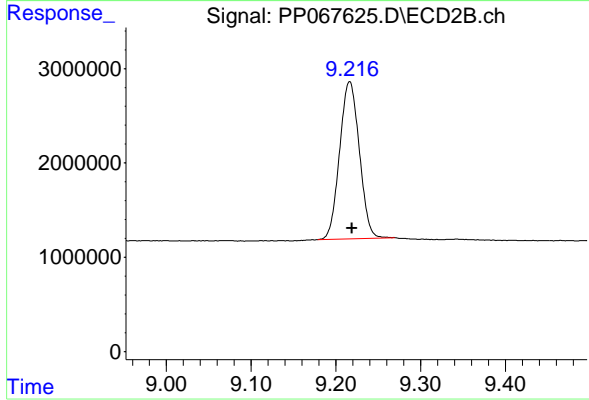
#1 Tetrachloro-m-xylene

R.T.: 4.052 min
 Delta R.T.: 0.000 min
 Response: 22007556
 Conc: 21.78 ng/ml



#2 Decachlorobiphenyl

R.T.: 10.664 min
 Delta R.T.: -0.005 min
 Response: 28036403
 Conc: 24.35 ng/ml



#2 Decachlorobiphenyl

R.T.: 9.216 min
 Delta R.T.: -0.003 min
 Response: 26966049
 Conc: 24.05 ng/ml