

Data Path : Z:\pestpcbsrv\HPCHEM1\ECD\_P\Data\PP100924\  
 Data File : PP067626.D  
 Signal(s) : Signal #1: ECD1A.ch Signal #2: ECD2B.ch  
 Acq On : 09 Oct 2024 10:29  
 Operator : YP\AJ  
 Sample : PB163968BL  
 Misc :  
 ALS Vial : 7 Sample Multiplier: 1

Instrument :  
 ECD\_P  
 ClientSampleId :  
 PB163968BL

Integration File signal 1: autoint1.e  
 Integration File signal 2: autoint2.e  
 Quant Time: Oct 09 12:43:28 2024  
 Quant Method : Z:\pestpcbsrv\HPCHEM1\ECD\_P\methods\PP100824.M  
 Quant Title : GC EXTRACTABLES  
 QLast Update : Wed Oct 09 05:48:32 2024  
 Response via : Initial Calibration  
 Integrator: ChemStation

Volume Inj. : 2 µl  
 Signal #1 Phase : ZB-MR1 Signal #2 Phase: ZB-MR2  
 Signal #1 Info : 30Mx0.32mmx 0.50µ Signal #2 Info : 30M x 0.32mm x 0.25µm

Compound	RT#1	RT#2	Resp#1	Resp#2	ng/ml	ng/ml
-----						
System Monitoring Compounds						
1) SA Tetrachlo...	4.753	4.052	17595145	18355782	19.009	18.167
2) SA Decachlor...	10.666	9.217	23565481	22924670	20.469	20.442

Target Compounds

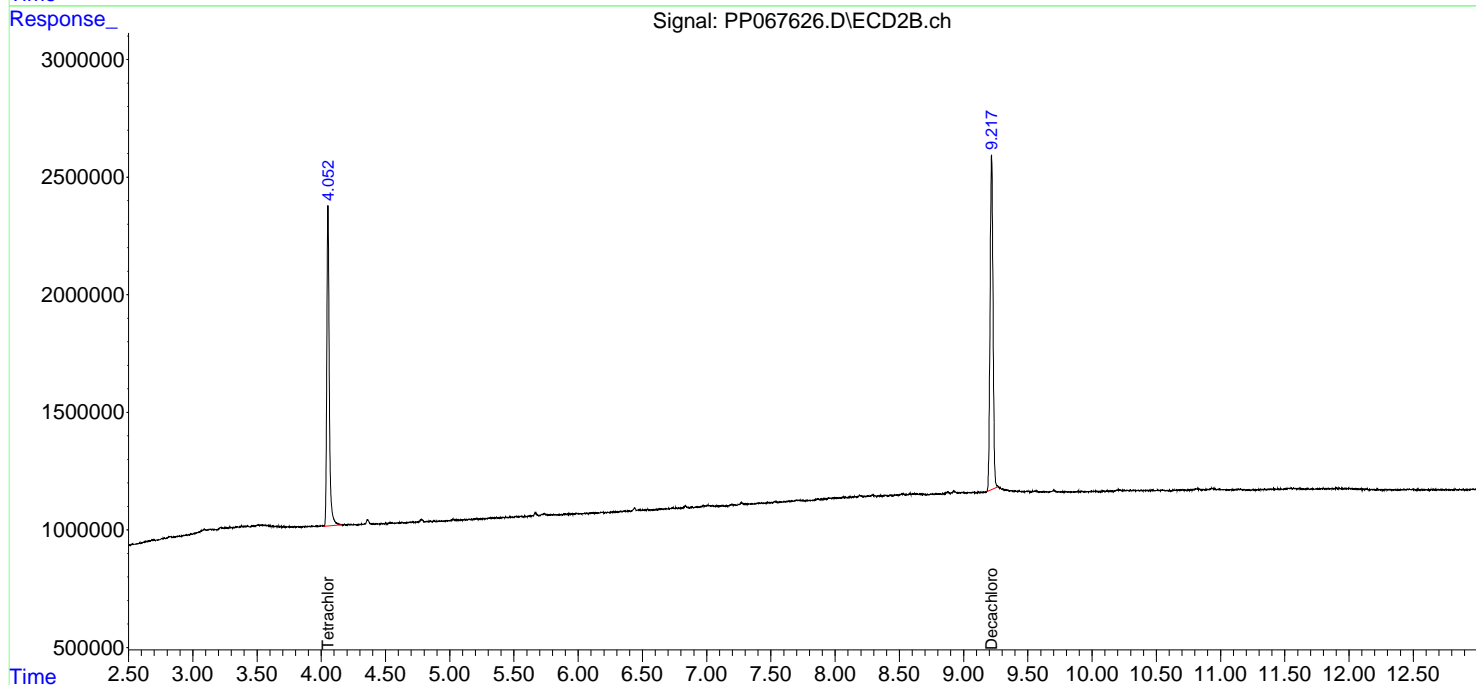
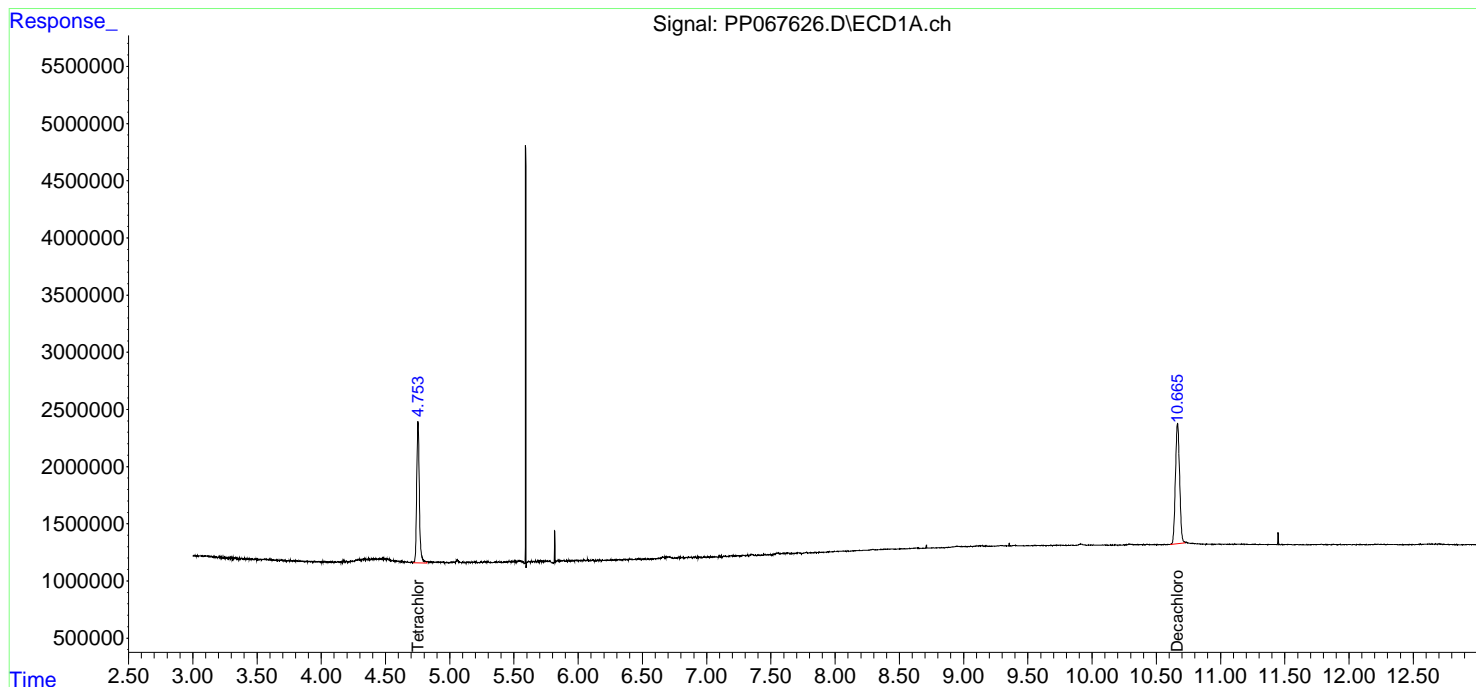
(f)=RT Delta > 1/2 Window (#)=Amounts differ by > 25% (m)=manual int.

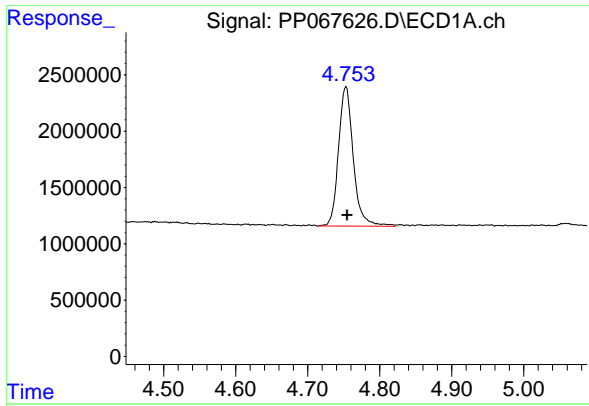
Data Path : Z:\pestpcbsrv\HPCHEM1\ECD\_P\Data\PP100924\  
 Data File : PP067626.D  
 Signal(s) : Signal #1: ECD1A.ch Signal #2: ECD2B.ch  
 Acq On : 09 Oct 2024 10:29  
 Operator : YP\AJ  
 Sample : PB163968BL  
 Misc :  
 ALS Vial : 7 Sample Multiplier: 1

Instrument :  
 ECD\_P  
 ClientSampleId :  
 PB163968BL

Integration File signal 1: autoint1.e  
 Integration File signal 2: autoint2.e  
 Quant Time: Oct 09 12:43:28 2024  
 Quant Method : Z:\pestpcbsrv\HPCHEM1\ECD\_P\methods\PP100824.M  
 Quant Title : GC EXTRACTABLES  
 QLast Update : Wed Oct 09 05:48:32 2024  
 Response via : Initial Calibration  
 Integrator: ChemStation

Volume Inj. : 2 µl  
 Signal #1 Phase : ZB-MR1 Signal #2 Phase: ZB-MR2  
 Signal #1 Info : 30Mx0.32mmx 0.50µm Signal #2 Info : 30M x 0.32mm x 0.25µm

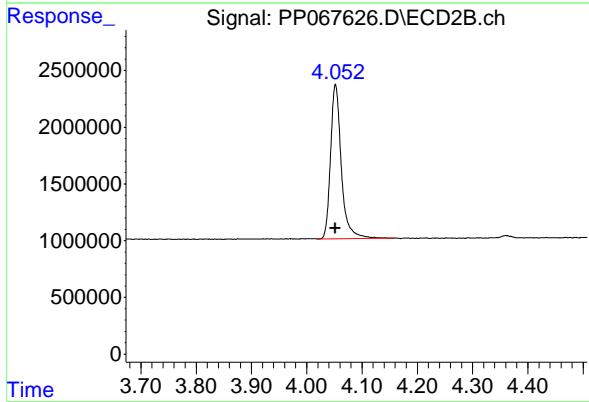




#1 Tetrachloro-m-xylene

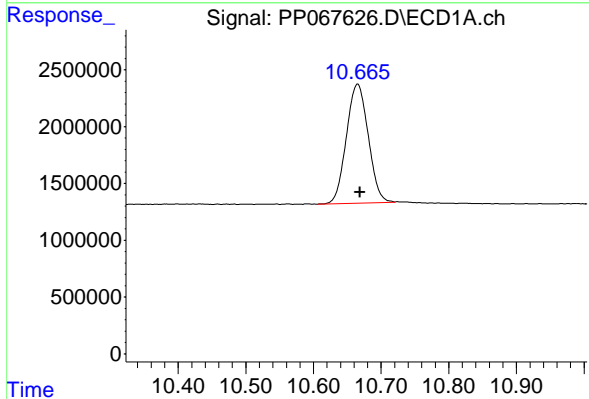
R.T.: 4.753 min  
Delta R.T.: -0.002 min  
Response: 17595145  
Conc: 19.01 ng/ml

Instrument :  
ECD\_P  
ClientSampleId :  
PB163968BL



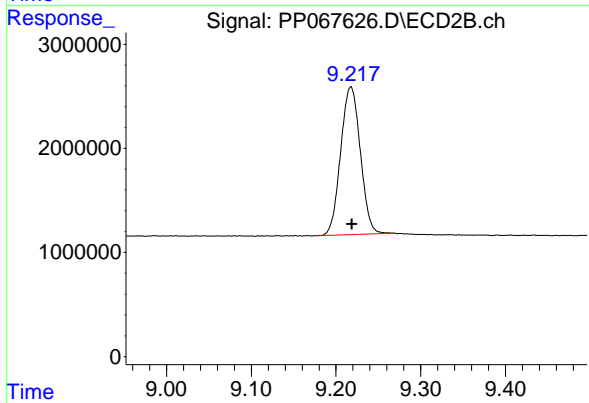
#1 Tetrachloro-m-xylene

R.T.: 4.052 min  
Delta R.T.: 0.000 min  
Response: 18355782  
Conc: 18.17 ng/ml



#2 Decachlorobiphenyl

R.T.: 10.666 min  
Delta R.T.: -0.003 min  
Response: 23565481  
Conc: 20.47 ng/ml



#2 Decachlorobiphenyl

R.T.: 9.217 min  
Delta R.T.: -0.002 min  
Response: 22924670  
Conc: 20.44 ng/ml