

Data Path : Z:\pestpcbsrv\HPCHEM1\ECD_P\Data\PP100924\
 Data File : PP067642.D
 Signal(s) : Signal #1: ECD1A.ch Signal #2: ECD2B.ch
 Acq On : 09 Oct 2024 14:59
 Operator : YP\AJ
 Sample : P4353-01
 Misc :
 ALS Vial : 18 Sample Multiplier: 1

Instrument :
 ECD_P
ClientSampleId :
 CF-400-COMP-43

Manual Integrations
APPROVED
 Reviewed By :Yogesh Patel 10/10/2024
 Supervised By :Ankita Jodhani 10/10/2024

Integration File signal 1: autoint1.e
 Integration File signal 2: autoint2.e
 Quant Time: Oct 09 23:58:35 2024
 Quant Method : Z:\pestpcbsrv\HPCHEM1\ECD_P\methods\PP100824.M
 Quant Title : GC EXTRACTABLES
 QLast Update : Wed Oct 09 05:48:32 2024
 Response via : Initial Calibration
 Integrator: ChemStation

Volume Inj. : 2 µl
 Signal #1 Phase : ZB-MR1 Signal #2 Phase: ZB-MR2
 Signal #1 Info : 30Mx0.32mmx 0.50µ Signal #2 Info : 30M x 0.32mm x 0.25µm

Compound	RT#1	RT#2	Resp#1	Resp#2	ng/ml	ng/ml

System Monitoring Compounds						
1) SA Tetrachlo...	4.753	4.052	17162484	18792655	18.541	18.599
2) SA Decachlor...	10.666	9.217	19300684	17946250	16.764	16.003

Target Compounds

(f)=RT Delta > 1/2 Window (#)=Amounts differ by > 25% (m)=manual int.

Data Path : Z:\pestpcbsrv\HPCHEM1\ECD_P\Data\PP100924\
 Data File : PP067642.D
 Signal(s) : Signal #1: ECD1A.ch Signal #2: ECD2B.ch
 Acq On : 09 Oct 2024 14:59
 Operator : YP\AJ
 Sample : P4353-01
 Misc :
 ALS Vial : 18 Sample Multiplier: 1

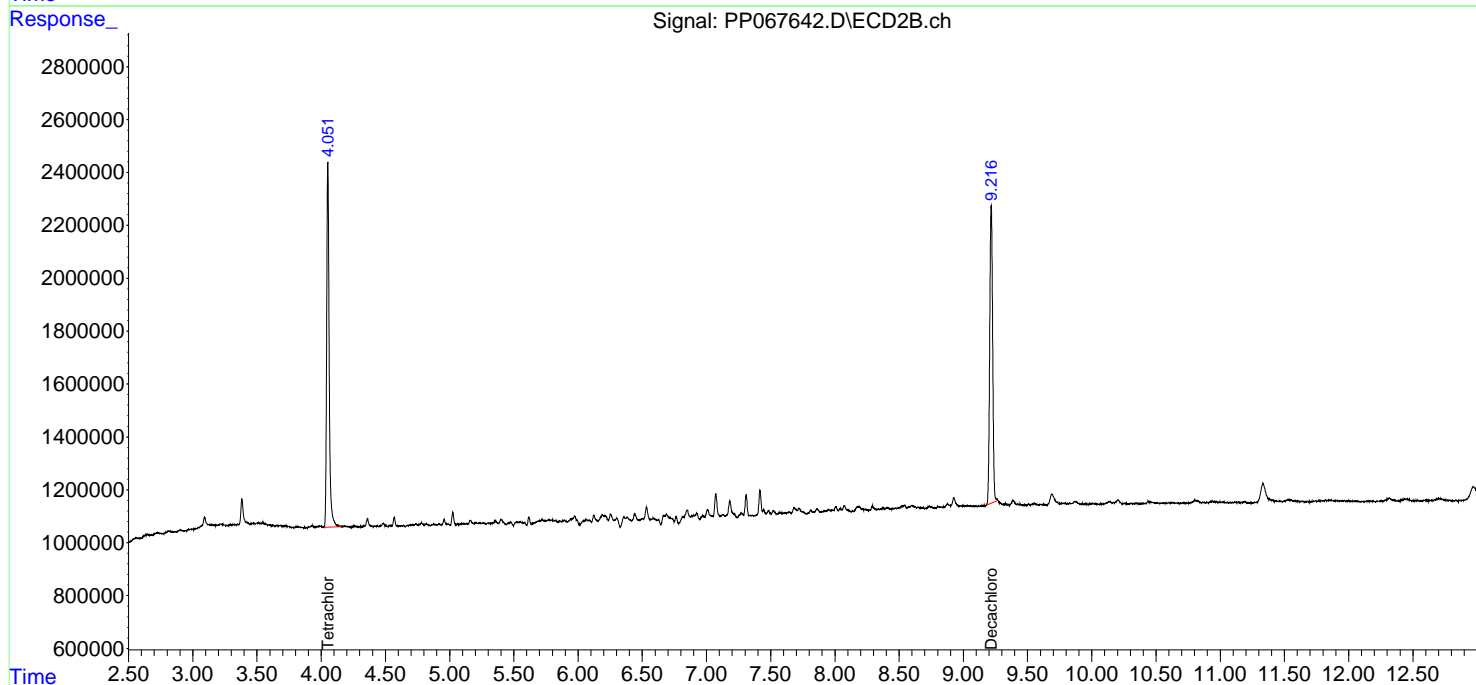
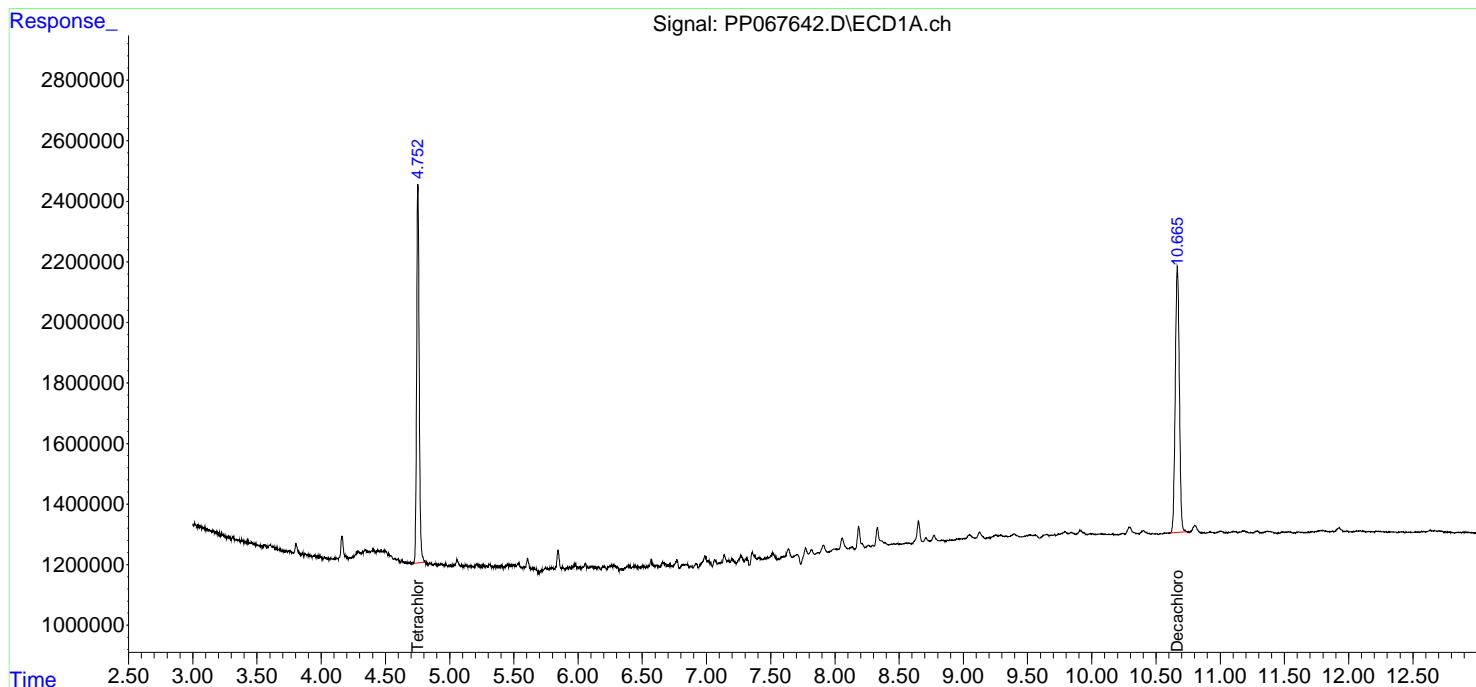
Instrument :
 ECD_P
ClientSampleId :
 CF-400-COMP-43

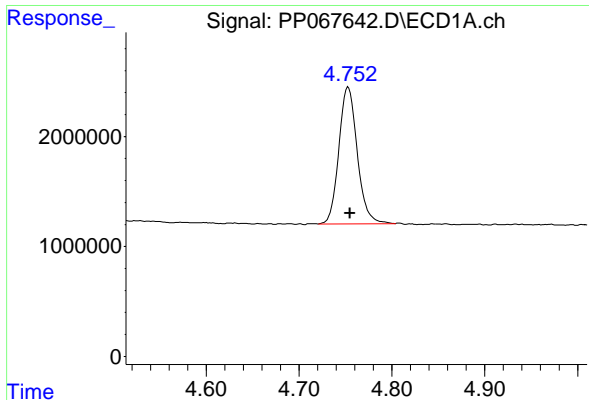
Manual Integrations
APPROVED

Reviewed By :Yogesh Patel 10/10/2024
 Supervised By :Ankita Jodhani 10/10/2024

Integration File signal 1: autoint1.e
 Integration File signal 2: autoint2.e
 Quant Time: Oct 09 23:58:35 2024
 Quant Method : Z:\pestpcbsrv\HPCHEM1\ECD_P\methods\PP100824.M
 Quant Title : GC EXTRACTABLES
 QLast Update : Wed Oct 09 05:48:32 2024
 Response via : Initial Calibration
 Integrator: ChemStation

Volume Inj. : 2 µl
 Signal #1 Phase : ZB-MR1 Signal #2 Phase: ZB-MR2
 Signal #1 Info : 30Mx0.32mmx 0.50µm Signal #2 Info : 30M x 0.32mm x 0.25µm





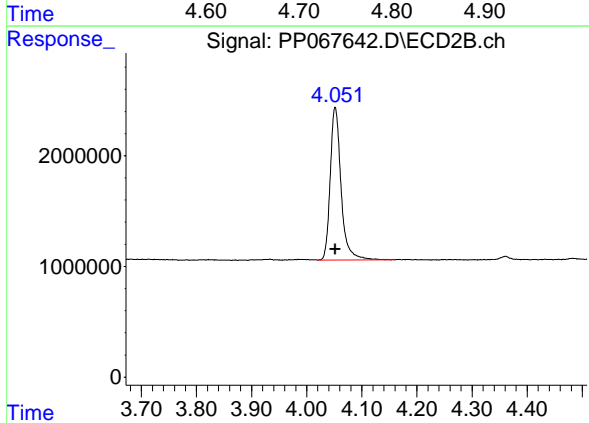
#1 Tetrachloro-m-xylene

R.T.: 4.753 min
 Delta R.T.: -0.002 min
 Response: 17162484
 Conc: 18.54 ng/ml

Instrument : ECD_P
 Client Sample Id : CF-400-COMP-43

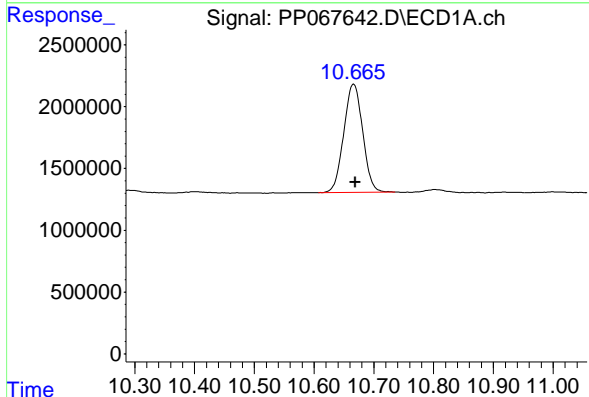
Manual Integrations
 APPROVED

Reviewed By :Yogesh Patel 10/10/2024
 Supervised By :Ankita Jodhani 10/10/2024



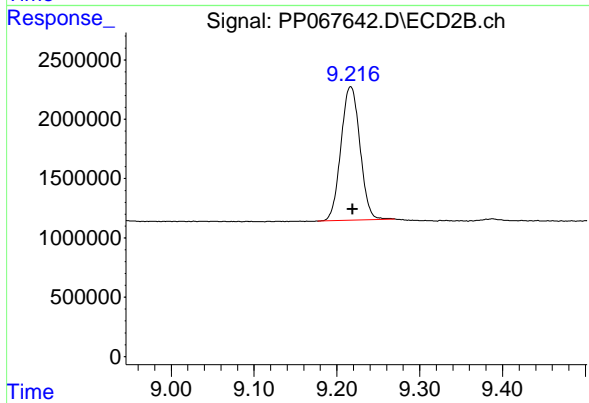
#1 Tetrachloro-m-xylene

R.T.: 4.052 min
 Delta R.T.: 0.000 min
 Response: 18792655
 Conc: 18.60 ng/ml



#2 Decachlorobiphenyl

R.T.: 10.666 min
 Delta R.T.: -0.003 min
 Response: 19300684
 Conc: 16.76 ng/ml



#2 Decachlorobiphenyl

R.T.: 9.217 min
 Delta R.T.: -0.002 min
 Response: 17946250
 Conc: 16.00 ng/ml