

Data Path : Z:\pestpcbsrv\HPCHEM1\ECD\_P\Data\PP100924\  
 Data File : PP067654.D  
 Signal(s) : Signal #1: ECD1A.ch Signal #2: ECD2B.ch  
 Acq On : 09 Oct 2024 18:34  
 Operator : YP\AJ  
 Sample : I.BLK  
 Misc :  
 ALS Vial : 2 Sample Multiplier: 1

Instrument :  
 ECD\_P  
 ClientSampleId :  
 I.BLK

Integration File signal 1: autoint1.e  
 Integration File signal 2: autoint2.e  
 Quant Time: Oct 10 00:02:06 2024  
 Quant Method : Z:\pestpcbsrv\HPCHEM1\ECD\_P\methods\PP100824.M  
 Quant Title : GC EXTRACTABLES  
 QLast Update : Wed Oct 09 05:48:32 2024  
 Response via : Initial Calibration  
 Integrator: ChemStation

Volume Inj. : 2 µl  
 Signal #1 Phase : ZB-MR1 Signal #2 Phase: ZB-MR2  
 Signal #1 Info : 30Mx0.32mmx 0.50µ Signal #2 Info : 30M x 0.32mm x 0.25µm

Compound	RT#1	RT#2	Resp#1	Resp#2	ng/ml	ng/ml
-----						
System Monitoring Compounds						
1) SA Tetrachlo...	4.755	4.052	21010386	23001648	22.698	22.765
2) SA Decachlor...	10.668	9.218	27817396	26713164	24.162	23.820

Target Compounds

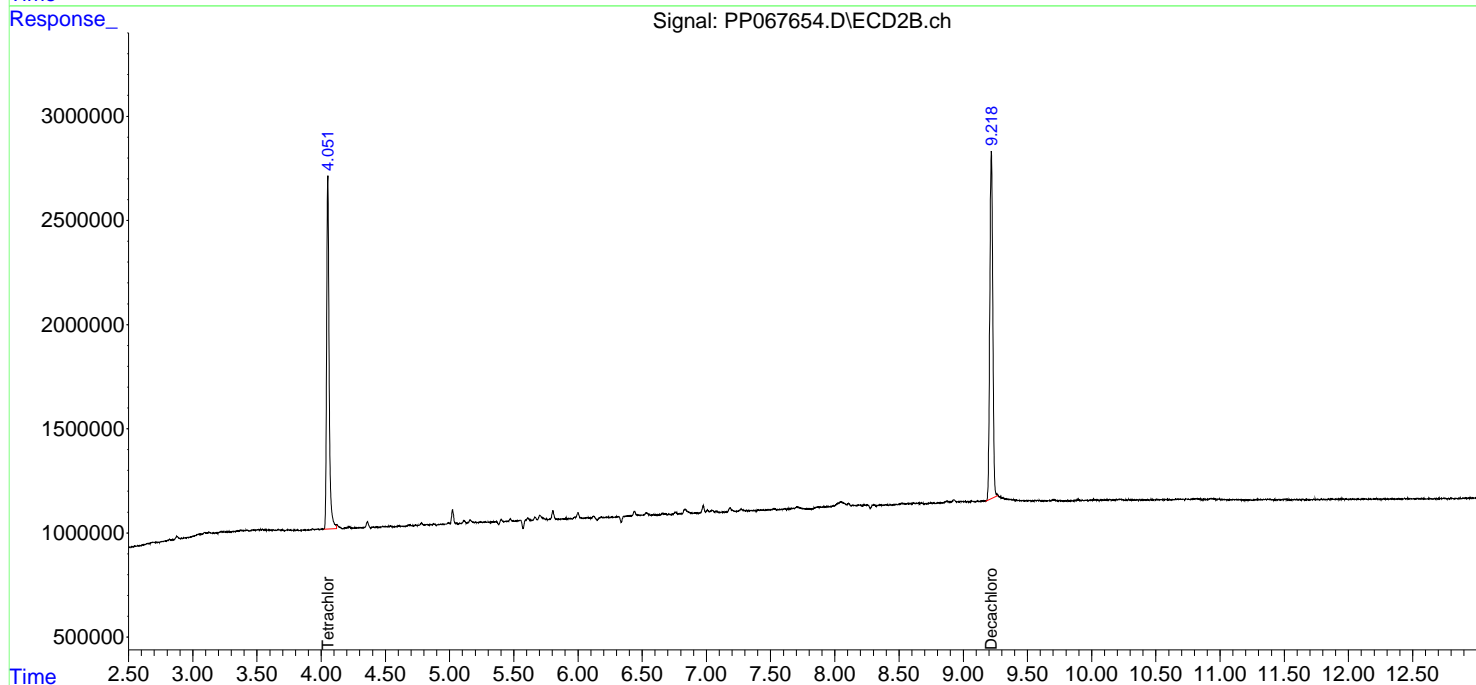
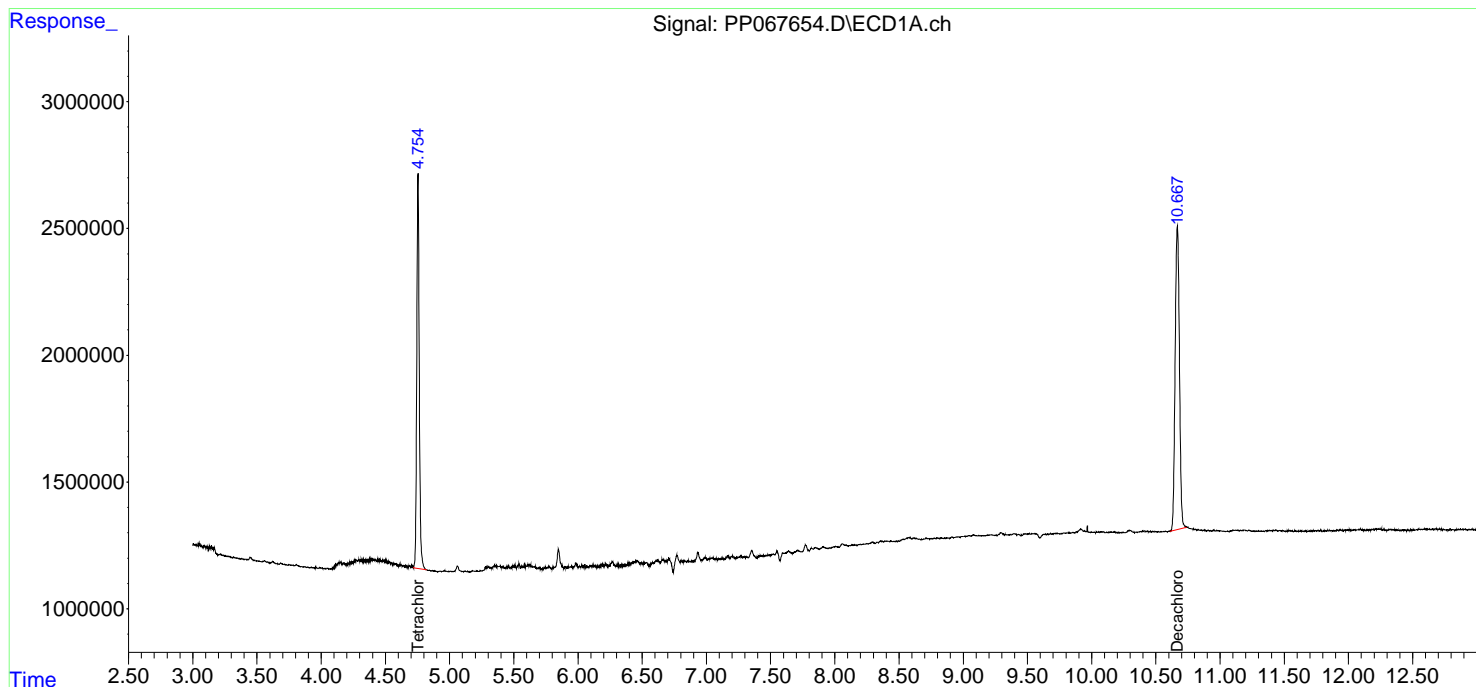
(f)=RT Delta > 1/2 Window (#)=Amounts differ by > 25% (m)=manual int.

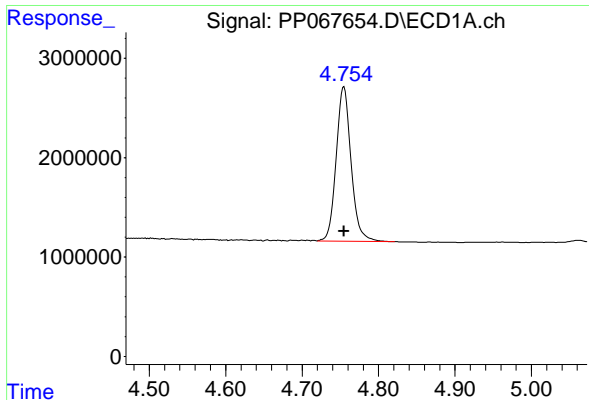
Data Path : Z:\pestpcbsrv\HPCHEM1\ECD\_P\Data\PP100924\  
Data File : PP067654.D  
Signal(s) : Signal #1: ECD1A.ch Signal #2: ECD2B.ch  
Acq On : 09 Oct 2024 18:34  
Operator : YP\AJ  
Sample : I.BLK  
Misc :  
ALS Vial : 2 Sample Multiplier: 1

Instrument :  
ECD\_P  
ClientSampleId :  
I.BLK

Integration File signal 1: autoint1.e  
Integration File signal 2: autoint2.e  
Quant Time: Oct 10 00:02:06 2024  
Quant Method : Z:\pestpcbsrv\HPCHEM1\ECD\_P\methods\PP100824.M  
Quant Title : GC EXTRACTABLES  
QLast Update : Wed Oct 09 05:48:32 2024  
Response via : Initial Calibration  
Integrator: ChemStation

Volume Inj. : 2 µl  
Signal #1 Phase : ZB-MR1 Signal #2 Phase: ZB-MR2  
Signal #1 Info : 30Mx0.32mmx 0.50µm Signal #2 Info : 30M x 0.32mm x 0.25µm

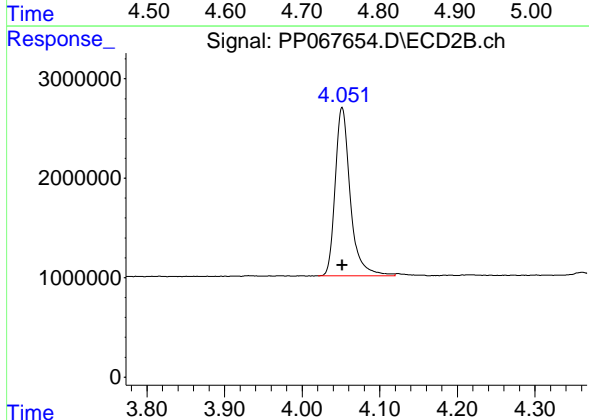




#1 Tetrachloro-m-xylene

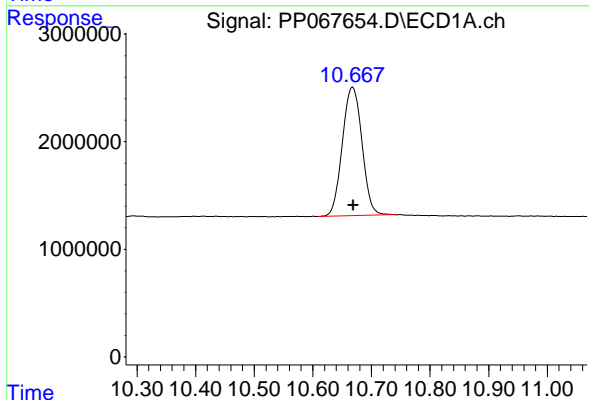
R.T.: 4.755 min  
 Delta R.T.: 0.000 min  
 Response: 21010386  
 Conc: 22.70 ng/ml

Instrument :  
 ECD\_P  
 ClientSampleId :  
 I.BLK



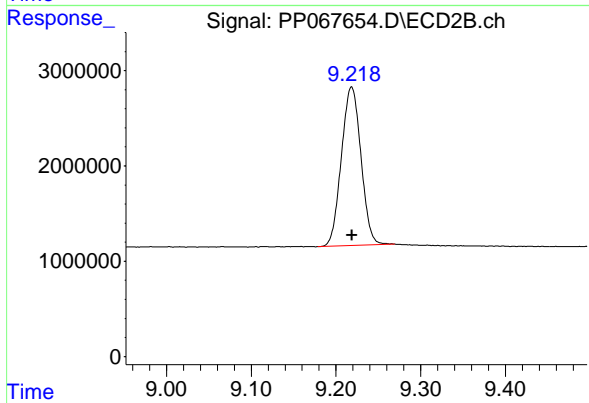
#1 Tetrachloro-m-xylene

R.T.: 4.052 min  
 Delta R.T.: 0.000 min  
 Response: 23001648  
 Conc: 22.76 ng/ml



#2 Decachlorobiphenyl

R.T.: 10.668 min  
 Delta R.T.: 0.000 min  
 Response: 27817396  
 Conc: 24.16 ng/ml



#2 Decachlorobiphenyl

R.T.: 9.218 min  
 Delta R.T.: 0.000 min  
 Response: 26713164  
 Conc: 23.82 ng/ml