

Data Path : Z:\pestpcbsrv\HPCHEM1\ECD\_P\Data\PP101019\  
 Data File : PP030441.D  
 Signal(s) : Signal #1: ECD1A.CH Signal #2: ECD2B.CH  
 Acq On : 10 Oct 2019 19:45  
 Operator : DD\AJ  
 Sample : K5281-01  
 Misc :  
 ALS Vial : 11 Sample Multiplier: 1

Instrument :  
 ECD\_P  
 ClientSampleId :  
 FK-PS-01-062

Integration File signal 1: autoint1.e  
 Integration File signal 2: autoint2.e  
 Quant Time: Oct 11 02:34:16 2019  
 Quant Method : Z:\pestpcbsrv\HPCHEM1\ECD\_P\methods\PP100919.M  
 Quant Title : 8080.M  
 QLast Update : Thu Oct 10 09:35:34 2019  
 Response via : Initial Calibration  
 Integrator: ChemStation 6890 Scale Mode: Large solvent peaks clipped

Volume Inj. : 2 µl  
 Signal #1 Phase : ZB-CLPesticides-1 Signal #2 Phase: ZB-CLPesticides-2  
 Signal #1 Info : 30M x 0.32mm x0.5 Signal #2 Info : 30M x 0.32mm x 0.25µm

Compound	RT#1	RT#2	Resp#1	Resp#2	ng/ml	ng/ml
----------	------	------	--------	--------	-------	-------

-----  
 System Monitoring Compounds

4) S	2,4-DCAA	11.036	11.192	139.7E6	72438290	386.503	329.628
------	----------	--------	--------	---------	----------	---------	---------

Target Compounds  
 -----

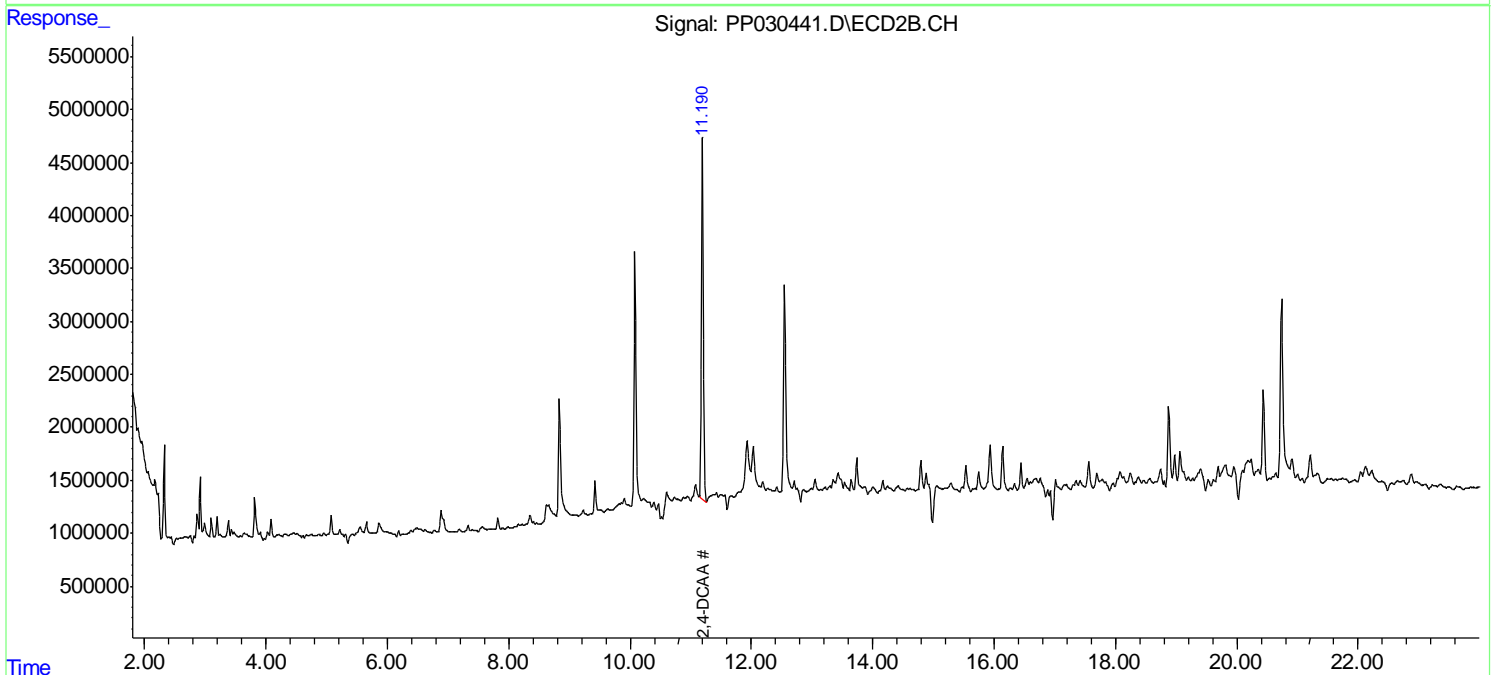
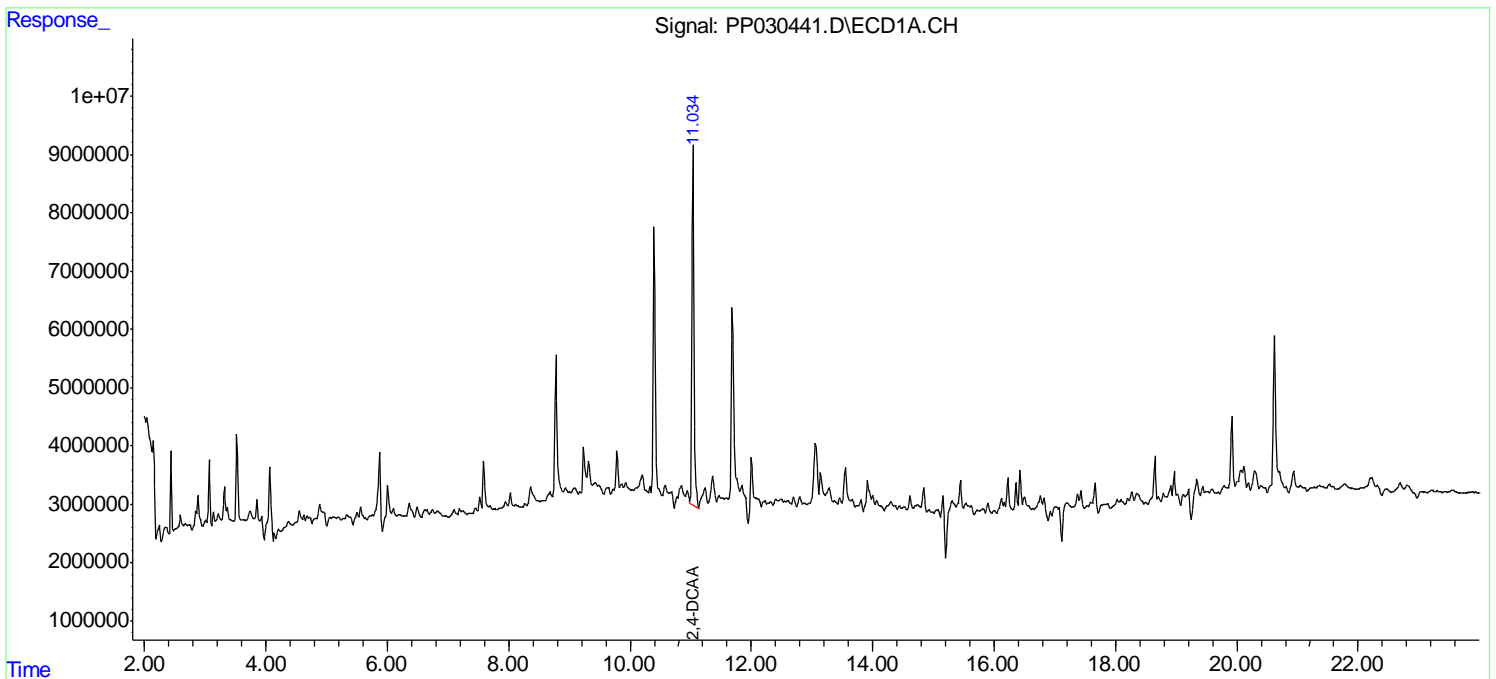
(f)=RT Delta > 1/2 Window (#)=Amounts differ by > 25% (m)=manual int.

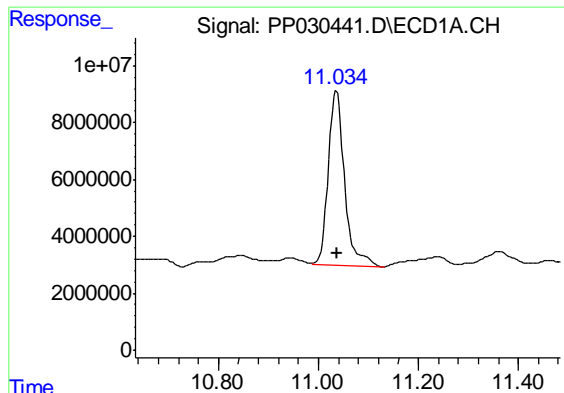
Data Path : Z:\pestpcbsrv\HPCHEM1\ECD\_P\Data\PP101019\  
 Data File : PP030441.D  
 Signal(s) : Signal #1: ECD1A.CH Signal #2: ECD2B.CH  
 Acq On : 10 Oct 2019 19:45  
 Operator : DD\AJ  
 Sample : K5281-01  
 Misc :  
 ALS Vial : 11 Sample Multiplier: 1

Instrument :  
 ECD\_P  
 ClientSampled :  
 FK-PS-01-062

Integration File signal 1: autoint1.e  
 Integration File signal 2: autoint2.e  
 Quant Time: Oct 11 02:34:16 2019  
 Quant Method : Z:\pestpcbsrv\HPCHEM1\ECD\_P\methods\PP100919.M  
 Quant Title : 8080.M  
 QLast Update : Thu Oct 10 09:35:34 2019  
 Response via : Initial Calibration  
 Integrator: ChemStation 6890 Scale Mode: Large solvent peaks clipped

Volume Inj. : 2 µl  
 Signal #1 Phase : ZB-CLPesticides-1 Signal #2 Phase: ZB-CLPesticides-2  
 Signal #1 Info : 30M x 0.32mm x0.5 Signal #2 Info : 30M x 0.32mm x 0.25µm

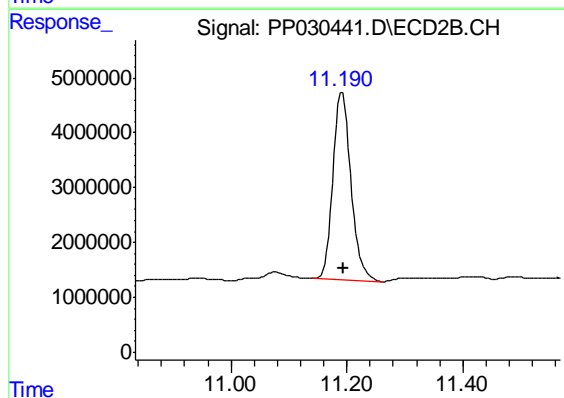




#4 2,4-DCAA

R.T.: 11.036 min  
Delta R.T.: -0.002 min  
Response: 139747001  
Conc: 386.50 ng/ml

Instrument :  
ECD\_P  
ClientSampleId :  
FK-PS-01-062



#4 2,4-DCAA

R.T.: 11.192 min  
Delta R.T.: -0.002 min  
Response: 72438290  
Conc: 329.63 ng/ml