

Data Path : Z:\pestpcbsrv\HPCHEM1\ECD_P\Data\PP101023\
 Data File : PP060860.D
 Signal(s) : Signal #1: ECD1A.ch Signal #2: ECD2B.ch
 Acq On : 10 Oct 2023 19:30
 Operator : YP\AJ
 Sample : 04805-06
 Misc :
 ALS Vial : 34 Sample Multiplier: 1

Instrument :
 ECD_P
 ClientSampleId :

Integration File signal 1: autoint1.e
 Integration File signal 2: autoint2.e
 Quant Time: Oct 11 02:23:30 2023
 Quant Method : Z:\pestpcbsrv\HPCHEM1\ECD_P\methods\PP092623.M
 Quant Title : GC EXTRACTABLES
 QLast Update : Wed Sep 27 11:30:16 2023
 Response via : Initial Calibration
 Integrator: ChemStation

Volume Inj. : 2 µl
 Signal #1 Phase : ZB-MR1 Signal #2 Phase: ZB-MR2
 Signal #1 Info : 30Mx0.32mmx 0.50µ Signal #2 Info : 30M x 0.32mm x 0.25µm

Compound	RT#1	RT#2	Resp#1	Resp#2	ng/ml	ng/ml
System Monitoring Compounds						
1) SA Tetrachlo...	4.532	3.684	35029517	24298222	15.642	16.324
2) SA Decachlor...	10.467	8.749	27265000	20760714	15.443	12.727
Target Compounds						
3) L1 AR-1016-1	5.742f	4.780	2738694	2039601	37.208	35.099
4) L1 AR-1016-2	5.742	4.780f	2738694	2039601	26.149	25.335
5) L1 AR-1016-3	5.818	4.978	392914	543772	6.012	12.167 #
6) L1 AR-1016-4	0.000	5.022	0	1198007	N.D.	33.293 #
7) L1 AR-1016-5	6.206	5.231	921154	637762	16.561	13.125
8) L2 AR-1221-1	4.744	3.908	2085860	329431	72.208	15.770 #
9) L2 AR-1221-2	4.845	3.987	1690626	1030340	79.131	69.100
10) L2 AR-1221-3	4.929f	4.069	2438762	44107	40.158	1.004 #
11) L3 AR-1232-1	4.929	4.069	2438762	44107	48.448	1.212 #
12) L3 AR-1232-2	5.448f	4.780f	2381100	2039601	86.956	55.928 #
13) L3 AR-1232-3	5.742f	4.978	2738694	543772	59.002	27.168 #
14) L3 AR-1232-4	0.000	5.068	0	501171	N.D.	26.852 #
15) L3 AR-1232-5	6.001	5.231	797347	637762	38.479	30.663
16) L4 AR-1242-1	5.742f	4.780	2738694	2039601	42.854	40.287
17) L4 AR-1242-2	5.742	4.780f	2738694	2039601	30.246	29.370
18) L4 AR-1242-3	5.818	4.978	392914	543772	6.979	14.120 #
19) L4 AR-1242-4	0.000	5.068	0	501171	N.D.	12.726 #
20) L4 AR-1242-5	6.673f	5.594	2923077	2338421	58.118	47.804
21) L5 AR-1248-1	5.742f	4.780	2738694	2039601	58.866	55.889
22) L5 AR-1248-2	6.001	5.022	797347	1198007	11.500	22.919 #
23) L5 AR-1248-3	6.206	5.068	921154	501171	12.128	9.026 #
24) L5 AR-1248-4	6.618	5.231	659510	637762	7.974	9.688
25) L5 AR-1248-5	6.673f	5.637	2923077	460884	36.319	7.165 #
26) L6 AR-1254-1	6.587	5.594	2882051	2338421	33.771	23.640 #
27) L6 AR-1254-2	6.812	5.740	5602926	1247989	43.901	14.521 #
28) L6 AR-1254-3	7.183	6.147	5074965	2995020	38.182	20.896 #
29) L6 AR-1254-4	7.470	6.376	2638239	992575	26.828	11.388 #
30) L6 AR-1254-5	7.890	6.797	11441622	4356641	105.605	34.380 #
31) L7 AR-1260-1	7.344	6.277	8064541	3809520	76.934	37.953 #
32) L7 AR-1260-2	7.595	6.466	11248728	2253334	93.037	18.887 #
33) L7 AR-1260-3	7.968	6.621	4490818	2375844	48.450	20.751 #
34) L7 AR-1260-4	8.201	7.097	7063141	1673914	66.601	17.587 #
35) L7 AR-1260-5	8.534	7.339	5538698	4311290	28.621	19.894 #
36) L8 AR-1262-1	7.968	6.890	4490818	1038742	36.003	19.399 #
37) L8 AR-1262-2	8.534	7.097	5538698	1673914	26.440	14.192 #
38) L8 AR-1262-3	8.873	7.625	4464975	1678121	29.503	18.199 #
39) L8 AR-1262-4	8.954	7.689	4847874	4119122	40.508	24.451 #
40) L8 AR-1262-5	9.656	8.190	1657796	1273578	20.706	16.439
41) L9 AR-1268-1	8.873f	7.625	4464975	1678121	16.830	6.174 #

Data Path : Z:\pestpcbsrv\HPCHEM1\ECD_P\Data\PP101023\
 Data File : PP060860.D
 Signal(s) : Signal #1: ECD1A.ch Signal #2: ECD2B.ch
 Acq On : 10 Oct 2023 19:30
 Operator : YP\AJ
 Sample : 04805-06
 Misc :
 ALS Vial : 34 Sample Multiplier: 1

Instrument :
 ECD_P
 ClientSampleId :

Integration File signal 1: autoint1.e
 Integration File signal 2: autoint2.e
 Quant Time: Oct 11 02:23:30 2023
 Quant Method : Z:\pestpcbsrv\HPCHEM1\ECD_P\methods\PP092623.M
 Quant Title : GC EXTRACTABLES
 QLast Update : Wed Sep 27 11:30:16 2023
 Response via : Initial Calibration
 Integrator: ChemStation

Volume Inj. : 2 µl
 Signal #1 Phase : ZB-MR1 Signal #2 Phase: ZB-MR2
 Signal #1 Info : 30Mx0.32mmx 0.50µ Signal #2 Info : 30M x 0.32mm x 0.25µm

	Compound	RT#1	RT#2	Resp#1	Resp#2	ng/ml	ng/ml
42)	L9 AR-1268-2	8.954	7.689	4847874	4119122	19.890	16.890
43)	L9 AR-1268-3	9.204	7.900	380228	809044	1.818	3.783 #
44)	L9 AR-1268-4	9.656	8.190	1657796	1273578	17.945	14.516
45)	L9 AR-1268-5	10.102	8.487	1566220	1808153	2.474	2.893

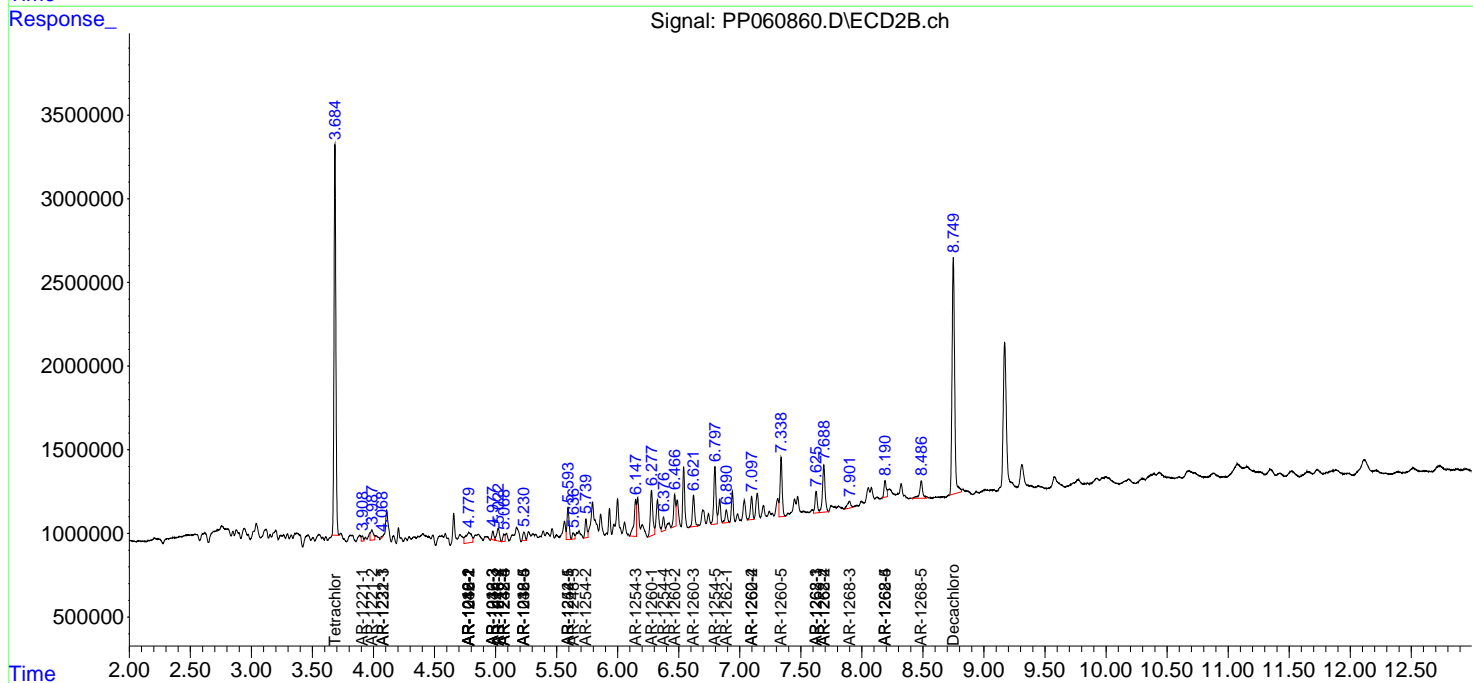
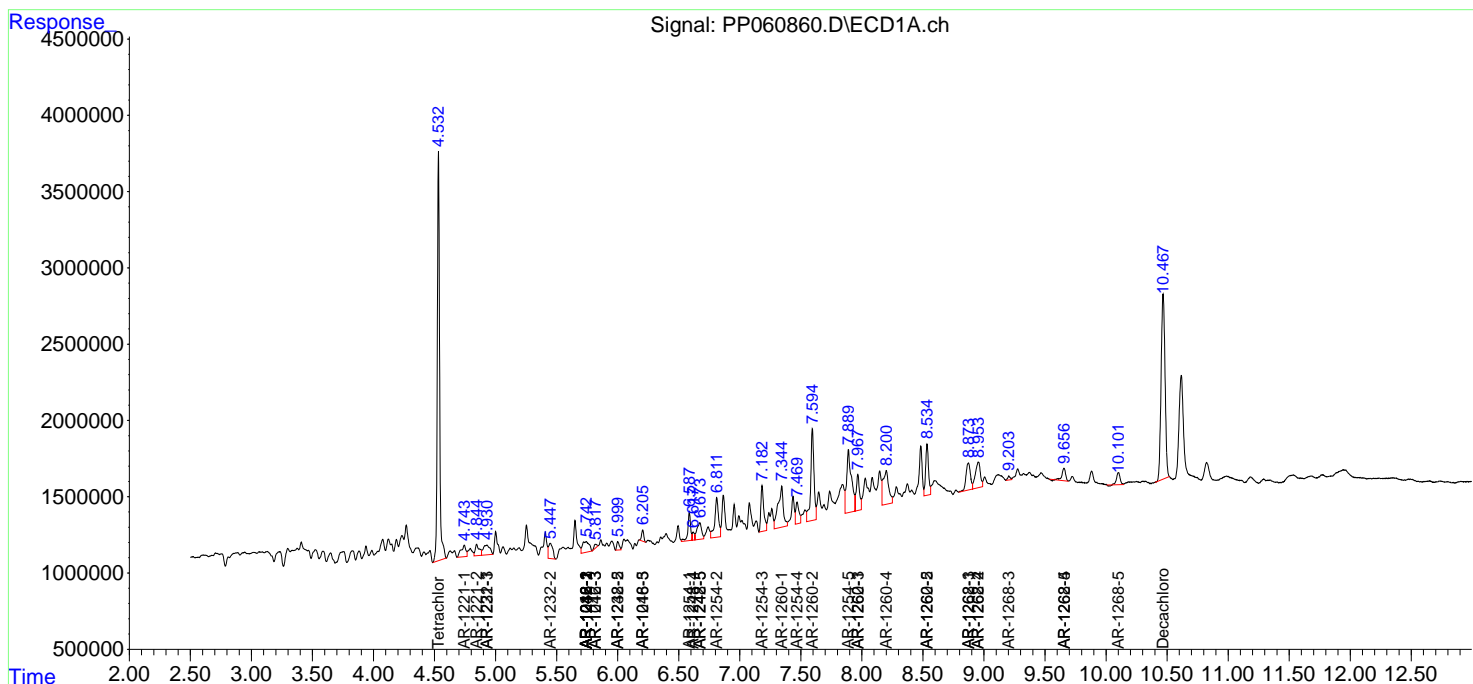
(f)=RT Delta > 1/2 Window (#)=Amounts differ by > 25% (m)=manual int.

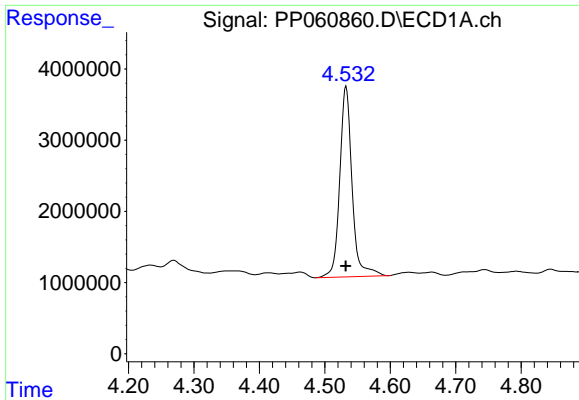
Data Path : Z:\pestpcbsrv\HPCHEM1\ECD_P\Data\PP101023\
 Data File : PP060860.D
 Signal(s) : Signal #1: ECD1A.ch Signal #2: ECD2B.ch
 Acq On : 10 Oct 2023 19:30
 Operator : YP\AJ
 Sample : 04805-06
 Misc :
 ALS Vial : 34 Sample Multiplier: 1

Instrument :
 ECD_P
 ClientSampleId :

Integration File signal 1: autoint1.e
 Integration File signal 2: autoint2.e
 Quant Time: Oct 11 02:23:30 2023
 Quant Method : Z:\pestpcbsrv\HPCHEM1\ECD_P\methods\PP092623.M
 Quant Title : GC EXTRACTABLES
 QLast Update : Wed Sep 27 11:30:16 2023
 Response via : Initial Calibration
 Integrator: ChemStation

Volume Inj. : 2 µl
 Signal #1 Phase : ZB-MR1 Signal #2 Phase: ZB-MR2
 Signal #1 Info : 30Mx0.32mmx 0.50µ Signal #2 Info : 30M x 0.32mm x 0.25µm

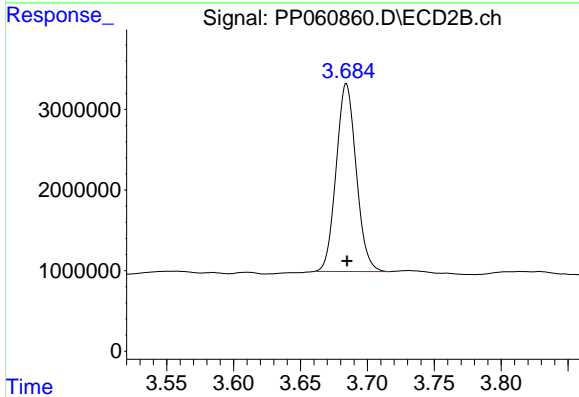




#1 Tetrachloro-m-xylene

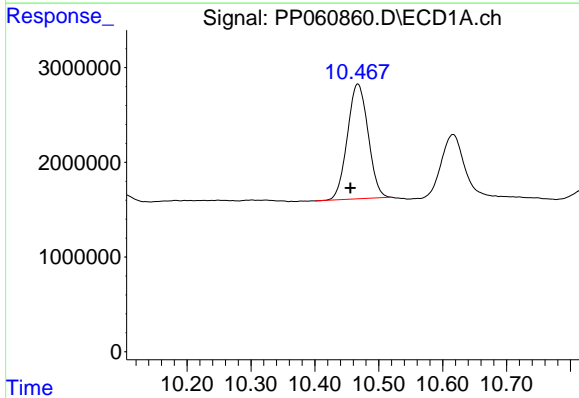
R.T.: 4.532 min
 Delta R.T.: 0.000 min
 Response: 35029517
 Conc: 15.64 ng/ml

Instrument :
 ECD_P
 ClientSampleId :



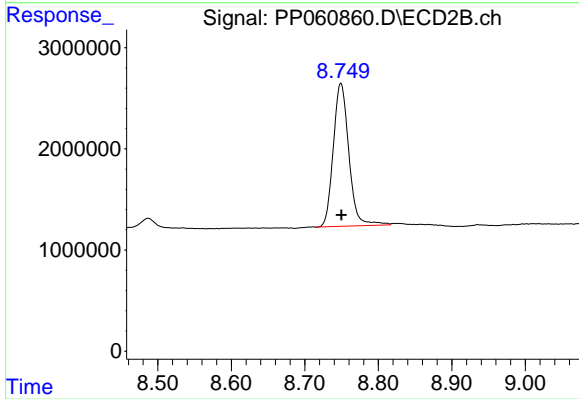
#1 Tetrachloro-m-xylene

R.T.: 3.684 min
 Delta R.T.: 0.000 min
 Response: 24298222
 Conc: 16.32 ng/ml



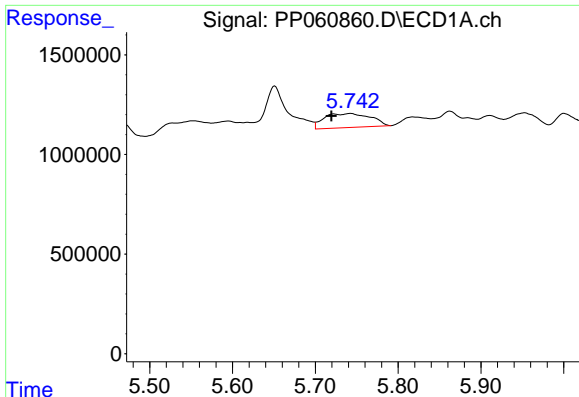
#2 Decachlorobiphenyl

R.T.: 10.467 min
 Delta R.T.: 0.012 min
 Response: 27265000
 Conc: 15.44 ng/ml



#2 Decachlorobiphenyl

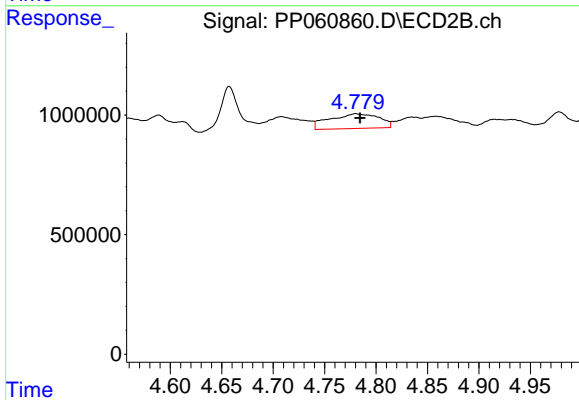
R.T.: 8.749 min
 Delta R.T.: 0.000 min
 Response: 20760714
 Conc: 12.73 ng/ml



#3 AR-1016-1

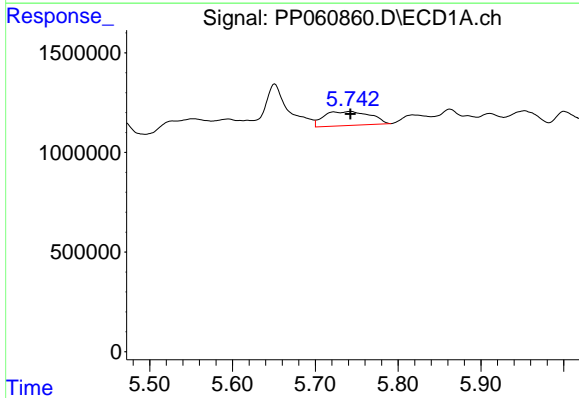
R.T.: 5.742 min
 Delta R.T.: 0.023 min
 Response: 2738694
 Conc: 37.21 ng/ml

Instrument :
 ECD_P
 ClientSampleId :



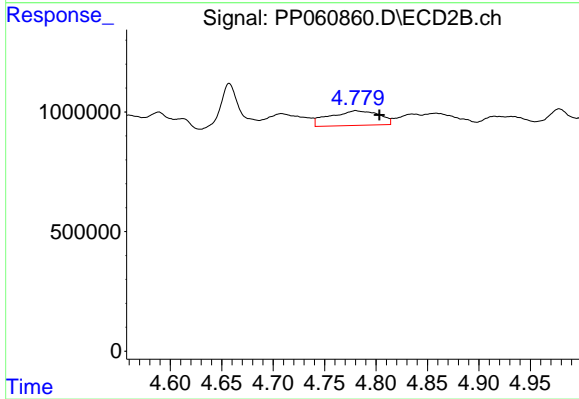
#3 AR-1016-1

R.T.: 4.780 min
 Delta R.T.: -0.004 min
 Response: 2039601
 Conc: 35.10 ng/ml



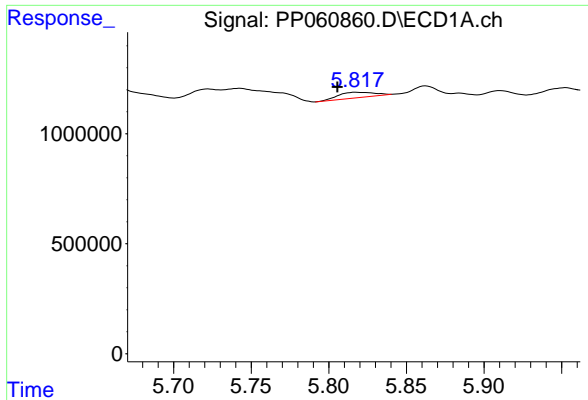
#4 AR-1016-2

R.T.: 5.742 min
 Delta R.T.: 0.000 min
 Response: 2738694
 Conc: 26.15 ng/ml



#4 AR-1016-2

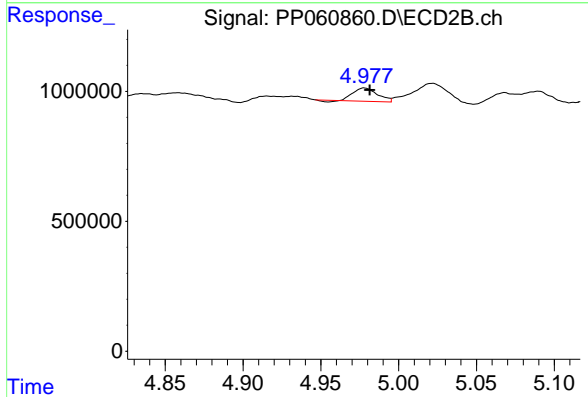
R.T.: 4.780 min
 Delta R.T.: -0.023 min
 Response: 2039601
 Conc: 25.33 ng/ml



#5 AR-1016-3

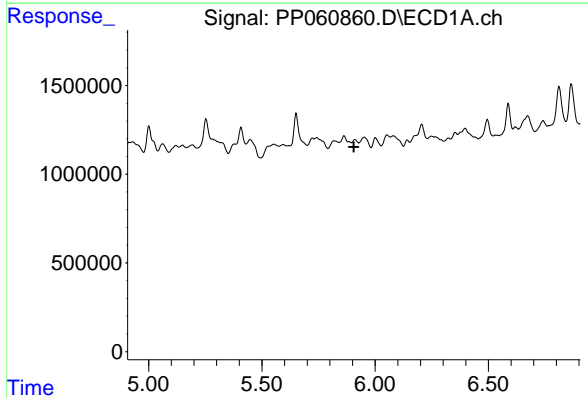
R.T.: 5.818 min
 Delta R.T.: 0.012 min
 Response: 392914
 Conc: 6.01 ng/ml

Instrument :
 ECD_P
 ClientSampleId :



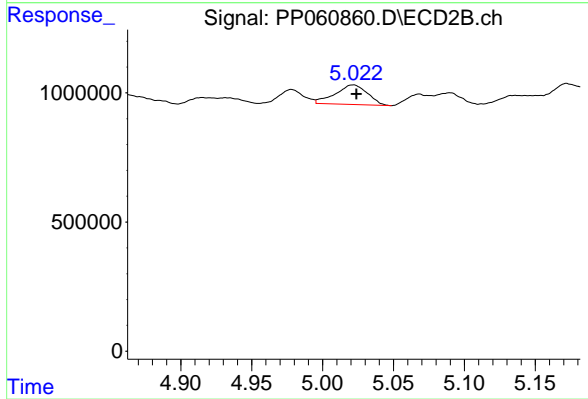
#5 AR-1016-3

R.T.: 4.978 min
 Delta R.T.: -0.004 min
 Response: 543772
 Conc: 12.17 ng/ml



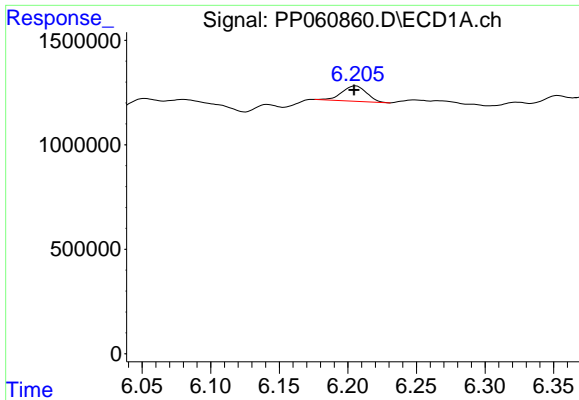
#6 AR-1016-4

R.T.: 0.000 min
 Exp R.T. : 5.906 min
 Response: 0
 Conc: N.D.



#6 AR-1016-4

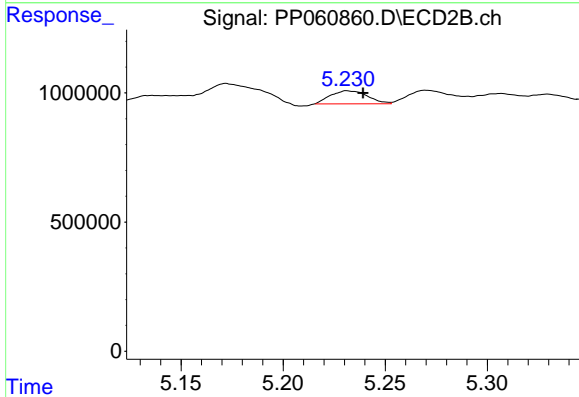
R.T.: 5.022 min
 Delta R.T.: -0.002 min
 Response: 1198007
 Conc: 33.29 ng/ml



#7 AR-1016-5

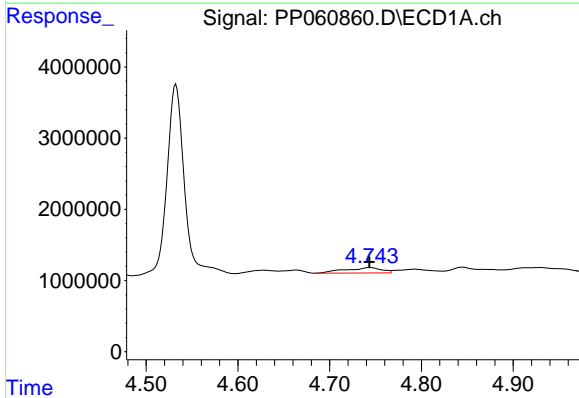
R.T.: 6.206 min
 Delta R.T.: 0.000 min
 Response: 921154
 Conc: 16.56 ng/ml

Instrument :
 ECD_P
 ClientSampleId :



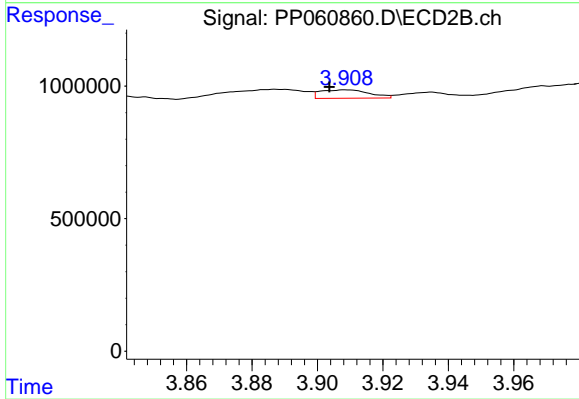
#7 AR-1016-5

R.T.: 5.231 min
 Delta R.T.: -0.008 min
 Response: 637762
 Conc: 13.13 ng/ml



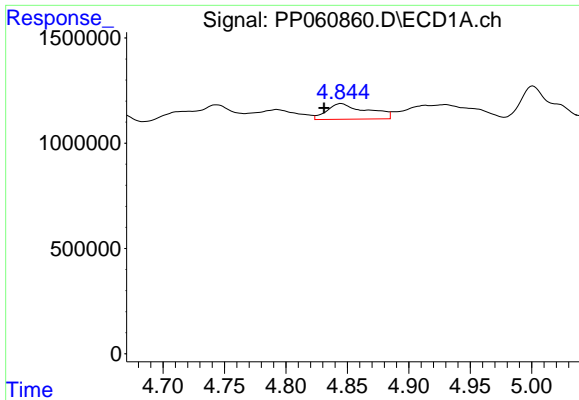
#8 AR-1221-1

R.T.: 4.744 min
 Delta R.T.: 0.000 min
 Response: 2085860
 Conc: 72.21 ng/ml



#8 AR-1221-1

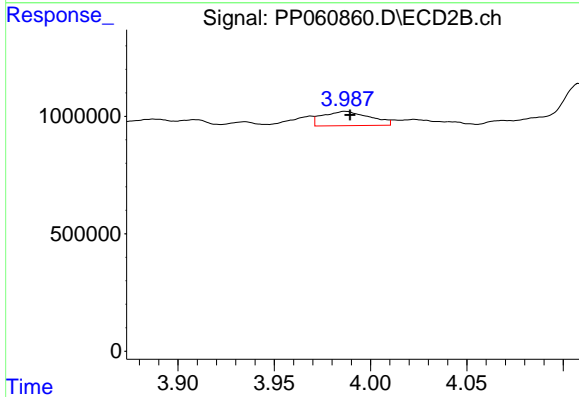
R.T.: 3.908 min
 Delta R.T.: 0.005 min
 Response: 329431
 Conc: 15.77 ng/ml



#9 AR-1221-2

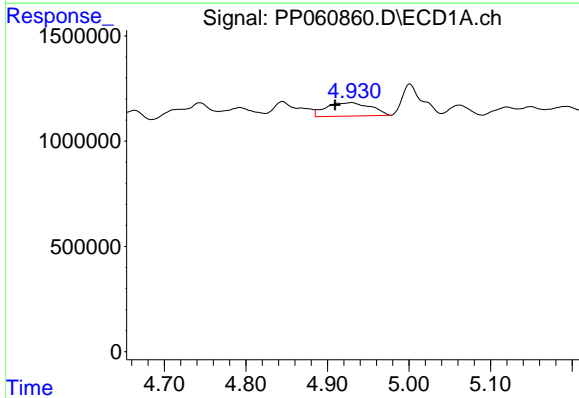
R.T.: 4.845 min
 Delta R.T.: 0.014 min
 Response: 1690626
 Conc: 79.13 ng/ml

Instrument :
 ECD_P
 ClientSampleId :



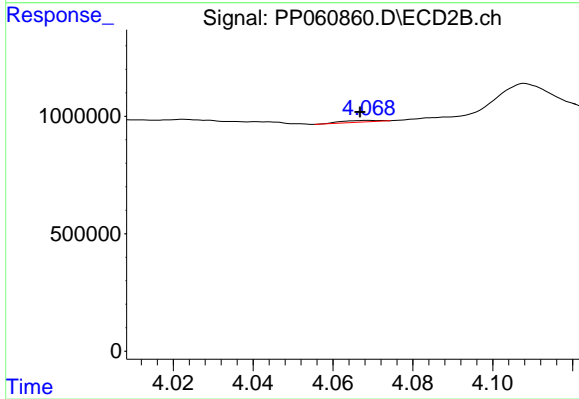
#9 AR-1221-2

R.T.: 3.987 min
 Delta R.T.: -0.002 min
 Response: 1030340
 Conc: 69.10 ng/ml



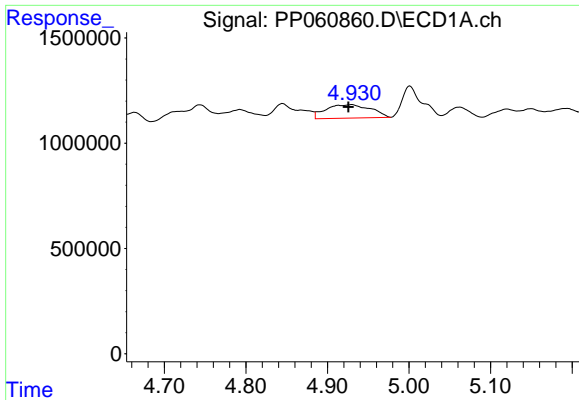
#10 AR-1221-3

R.T.: 4.929 min
 Delta R.T.: 0.020 min
 Response: 2438762
 Conc: 40.16 ng/ml



#10 AR-1221-3

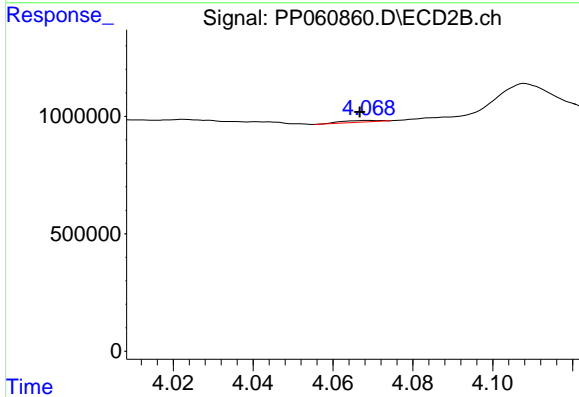
R.T.: 4.069 min
 Delta R.T.: 0.002 min
 Response: 44107
 Conc: 1.00 ng/ml



#11 AR-1232-1

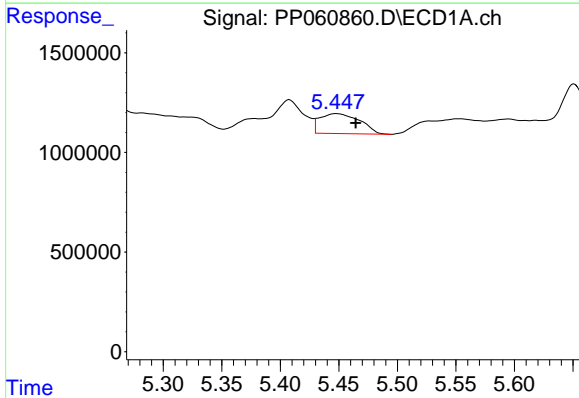
R.T.: 4.929 min
 Delta R.T.: 0.004 min
 Response: 2438762
 Conc: 48.45 ng/ml

Instrument :
 ECD_P
 ClientSampleId :



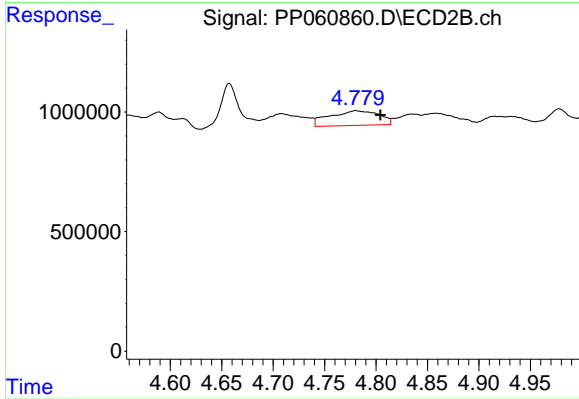
#11 AR-1232-1

R.T.: 4.069 min
 Delta R.T.: 0.002 min
 Response: 44107
 Conc: 1.21 ng/ml



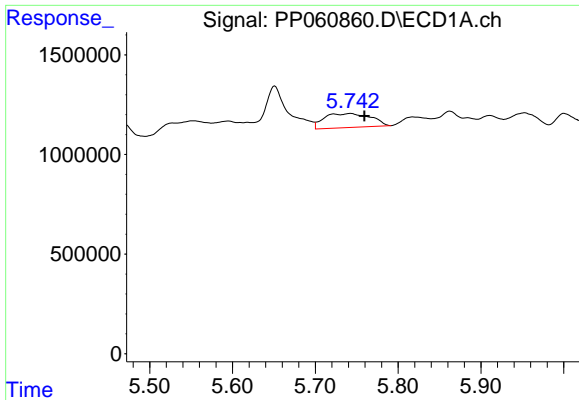
#12 AR-1232-2

R.T.: 5.448 min
 Delta R.T.: -0.016 min
 Response: 2381100
 Conc: 86.96 ng/ml



#12 AR-1232-2

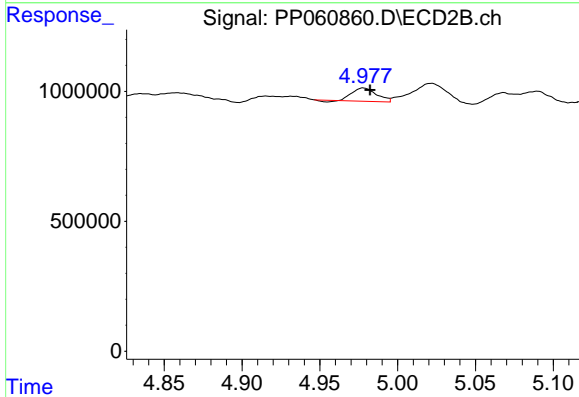
R.T.: 4.780 min
 Delta R.T.: -0.024 min
 Response: 2039601
 Conc: 55.93 ng/ml



#13 AR-1232-3

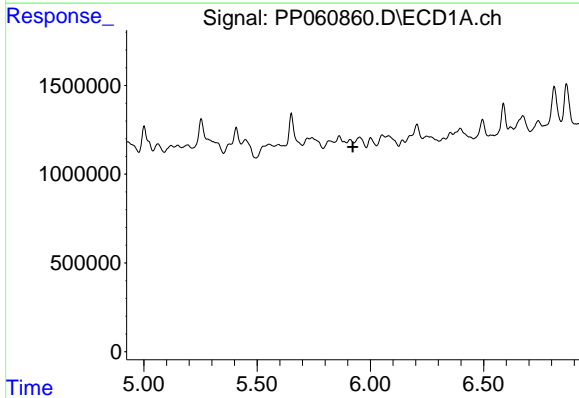
R.T.: 5.742 min
 Delta R.T.: -0.017 min
 Response: 2738694
 Conc: 59.00 ng/ml

Instrument :
 ECD_P
 ClientSampleId :



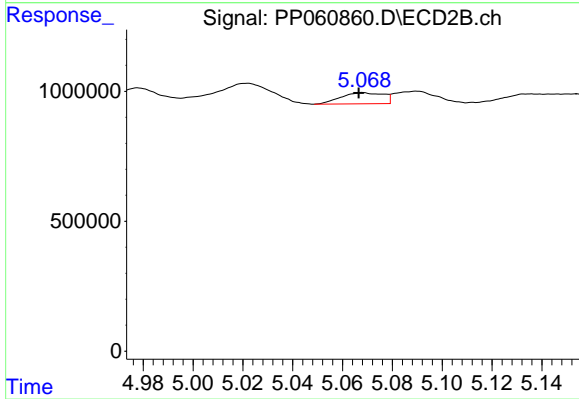
#13 AR-1232-3

R.T.: 4.978 min
 Delta R.T.: -0.004 min
 Response: 543772
 Conc: 27.17 ng/ml



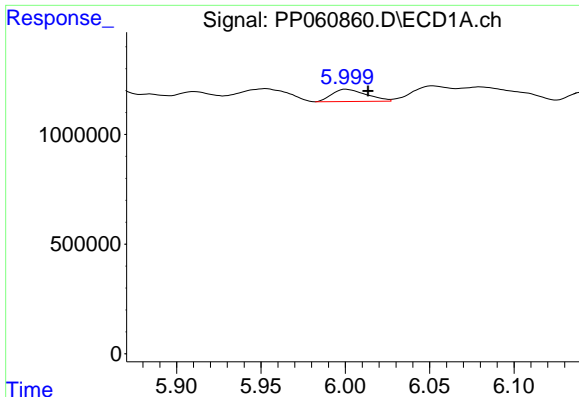
#14 AR-1232-4

R.T.: 0.000 min
 Exp R.T. : 5.922 min
 Response: 0
 Conc: N.D.



#14 AR-1232-4

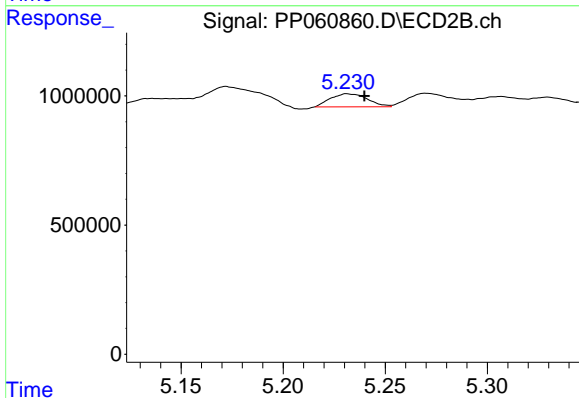
R.T.: 5.068 min
 Delta R.T.: 0.002 min
 Response: 501171
 Conc: 26.85 ng/ml



#15 AR-1232-5

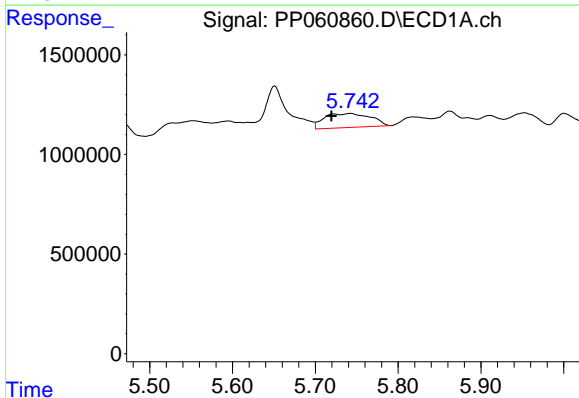
R.T.: 6.001 min
 Delta R.T.: -0.013 min
 Response: 797347
 Conc: 38.48 ng/ml

Instrument :
 ECD_P
 ClientSampleId :



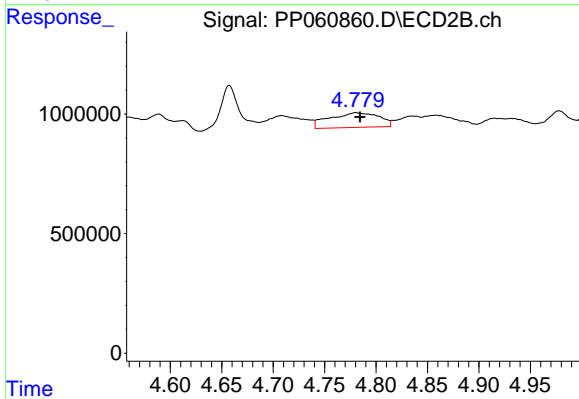
#15 AR-1232-5

R.T.: 5.231 min
 Delta R.T.: -0.009 min
 Response: 637762
 Conc: 30.66 ng/ml



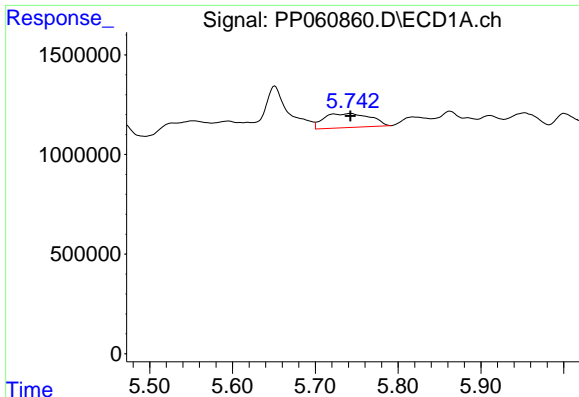
#16 AR-1242-1

R.T.: 5.742 min
 Delta R.T.: 0.023 min
 Response: 2738694
 Conc: 42.85 ng/ml



#16 AR-1242-1

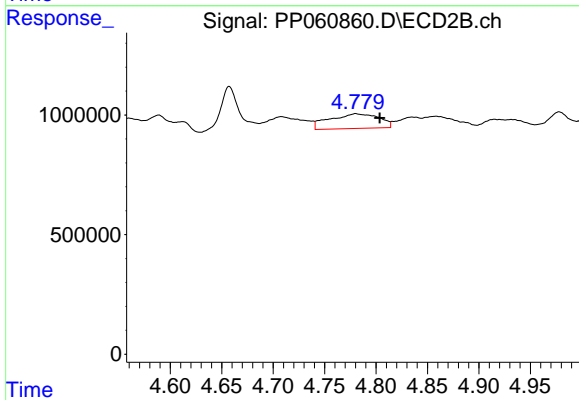
R.T.: 4.780 min
 Delta R.T.: -0.004 min
 Response: 2039601
 Conc: 40.29 ng/ml



#17 AR-1242-2

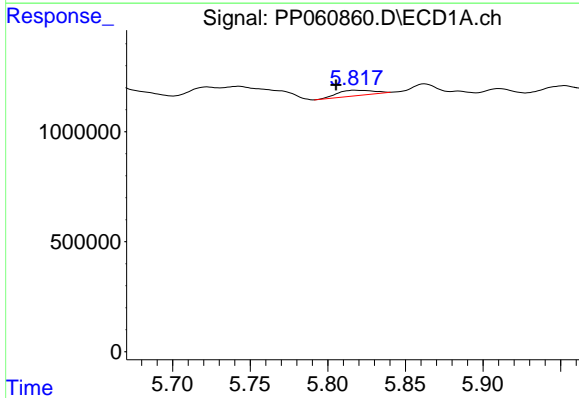
R.T.: 5.742 min
 Delta R.T.: 0.000 min
 Response: 2738694
 Conc: 30.25 ng/ml

Instrument :
 ECD_P
 ClientSampleId :



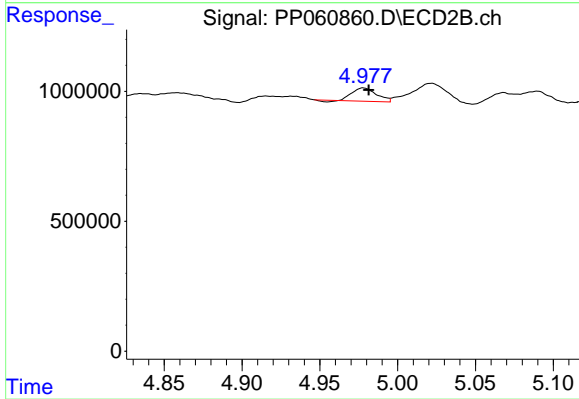
#17 AR-1242-2

R.T.: 4.780 min
 Delta R.T.: -0.023 min
 Response: 2039601
 Conc: 29.37 ng/ml



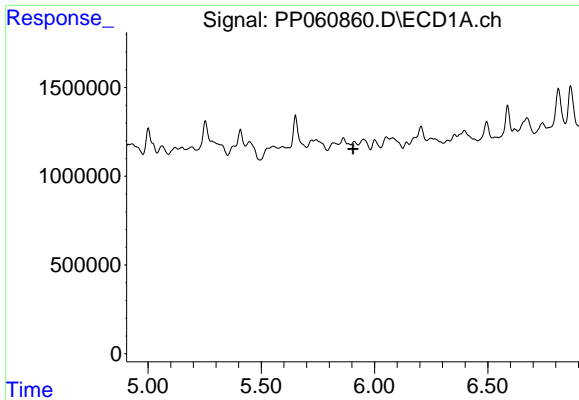
#18 AR-1242-3

R.T.: 5.818 min
 Delta R.T.: 0.013 min
 Response: 392914
 Conc: 6.98 ng/ml



#18 AR-1242-3

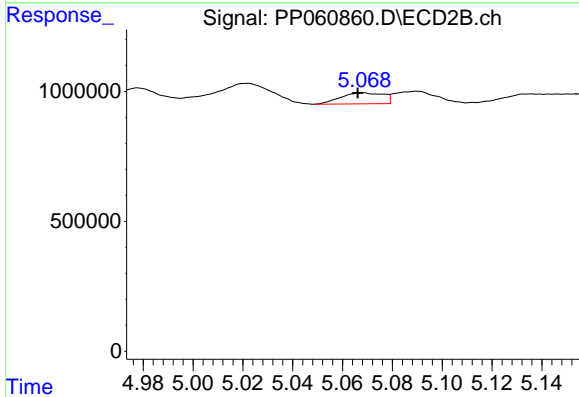
R.T.: 4.978 min
 Delta R.T.: -0.004 min
 Response: 543772
 Conc: 14.12 ng/ml



#19 AR-1242-4

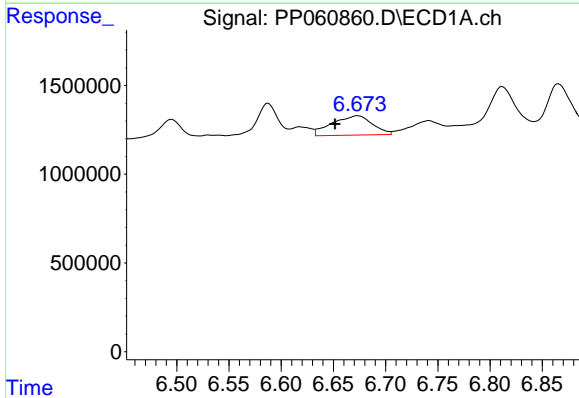
R.T.: 0.000 min
 Exp R.T.: 5.905 min
 Response: 0
 Conc: N.D.

Instrument :
 ECD_P
 ClientSampleId :



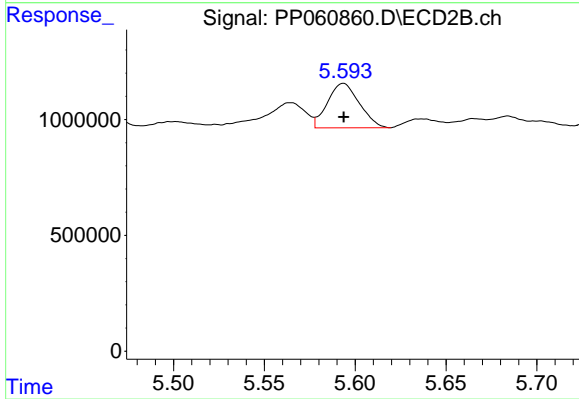
#19 AR-1242-4

R.T.: 5.068 min
 Delta R.T.: 0.002 min
 Response: 501171
 Conc: 12.73 ng/ml



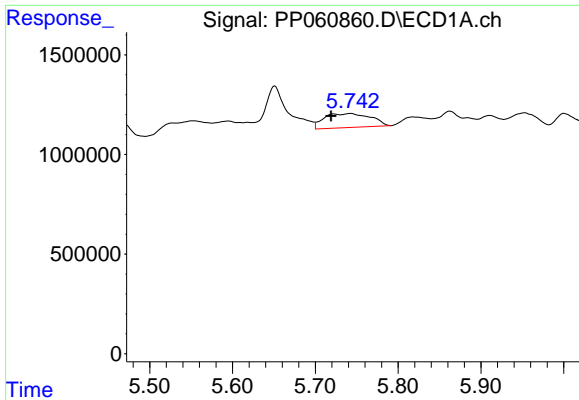
#20 AR-1242-5

R.T.: 6.673 min
 Delta R.T.: 0.022 min
 Response: 2923077
 Conc: 58.12 ng/ml



#20 AR-1242-5

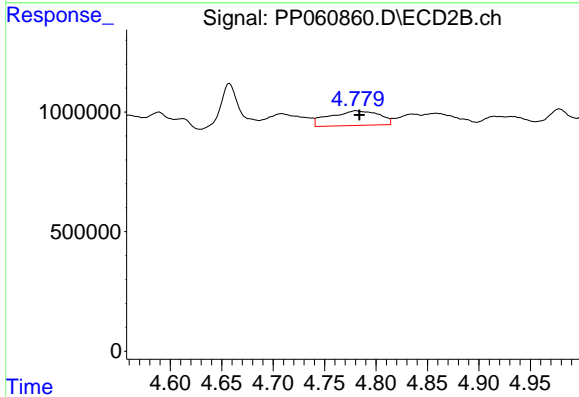
R.T.: 5.594 min
 Delta R.T.: 0.000 min
 Response: 2338421
 Conc: 47.80 ng/ml



#21 AR-1248-1

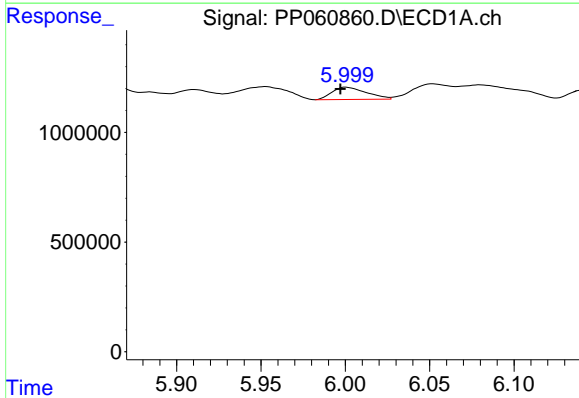
R.T.: 5.742 min
 Delta R.T.: 0.024 min
 Response: 2738694
 Conc: 58.87 ng/ml

Instrument :
 ECD_P
 ClientSampleId :



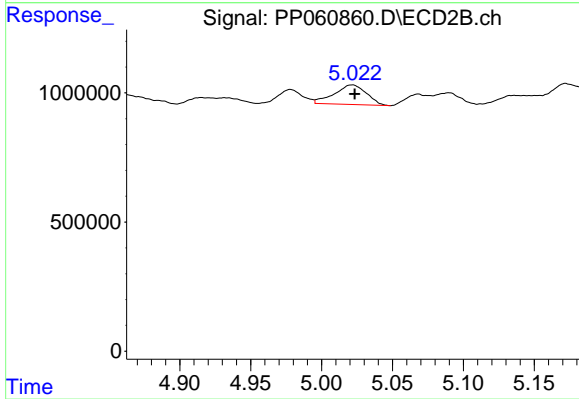
#21 AR-1248-1

R.T.: 4.780 min
 Delta R.T.: -0.004 min
 Response: 2039601
 Conc: 55.89 ng/ml



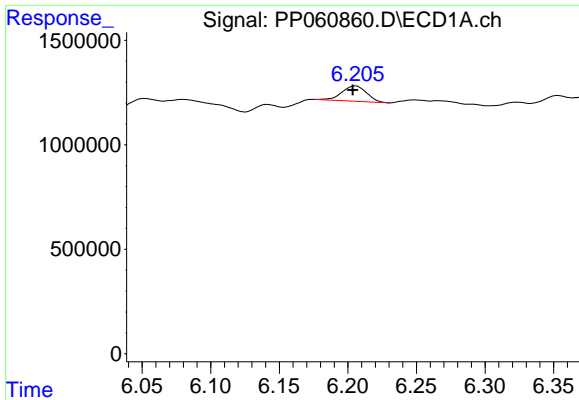
#22 AR-1248-2

R.T.: 6.001 min
 Delta R.T.: 0.004 min
 Response: 797347
 Conc: 11.50 ng/ml



#22 AR-1248-2

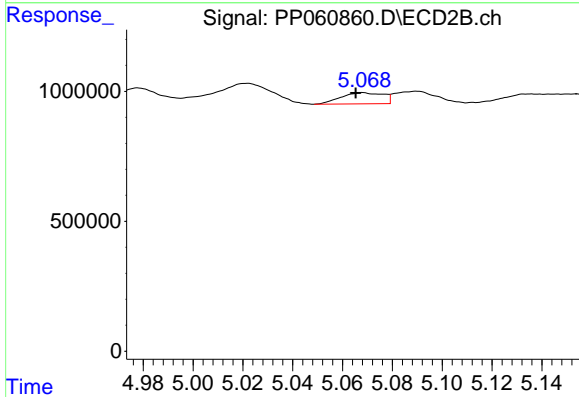
R.T.: 5.022 min
 Delta R.T.: -0.001 min
 Response: 1198007
 Conc: 22.92 ng/ml



#23 AR-1248-3

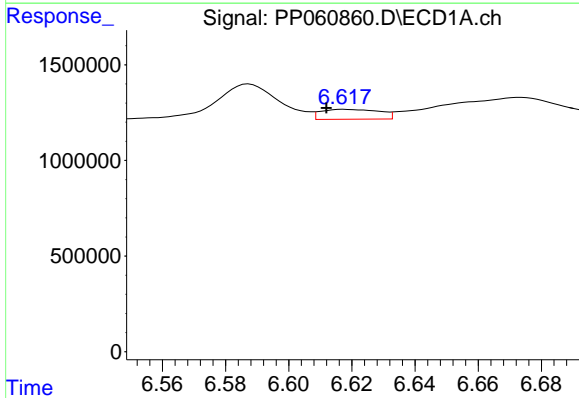
R.T.: 6.206 min
 Delta R.T.: 0.002 min
 Response: 921154
 Conc: 12.13 ng/ml

Instrument :
 ECD_P
 ClientSampleId :



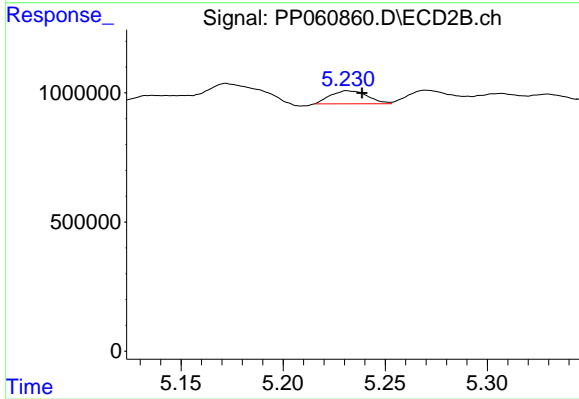
#23 AR-1248-3

R.T.: 5.068 min
 Delta R.T.: 0.003 min
 Response: 501171
 Conc: 9.03 ng/ml



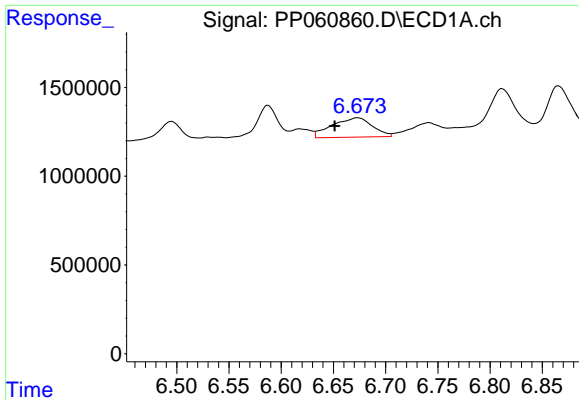
#24 AR-1248-4

R.T.: 6.618 min
 Delta R.T.: 0.006 min
 Response: 659510
 Conc: 7.97 ng/ml



#24 AR-1248-4

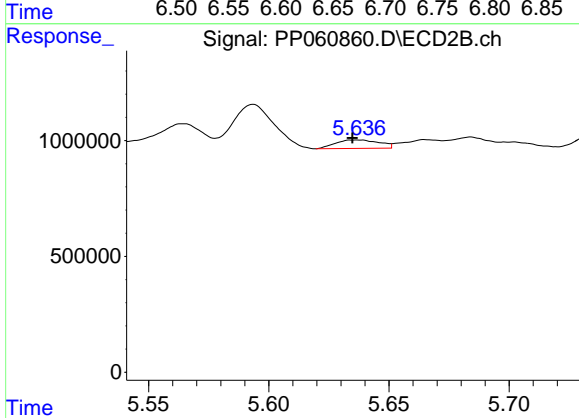
R.T.: 5.231 min
 Delta R.T.: -0.008 min
 Response: 637762
 Conc: 9.69 ng/ml



#25 AR-1248-5

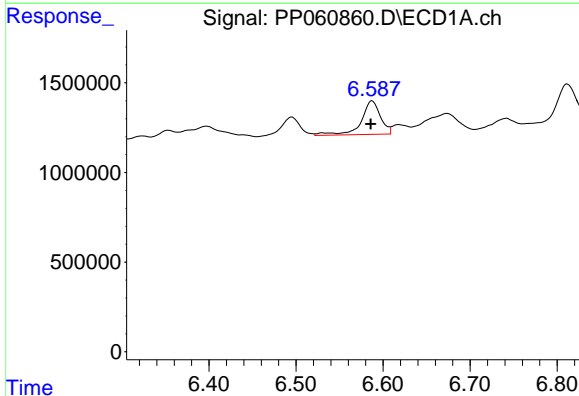
R.T.: 6.673 min
 Delta R.T.: 0.022 min
 Response: 2923077
 Conc: 36.32 ng/ml

Instrument :
 ECD_P
 ClientSampleId :



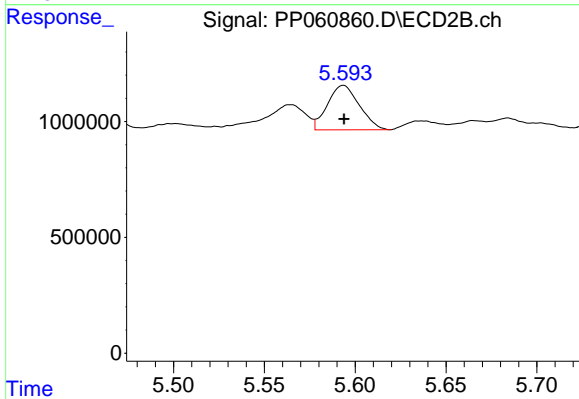
#25 AR-1248-5

R.T.: 5.637 min
 Delta R.T.: 0.002 min
 Response: 460884
 Conc: 7.17 ng/ml



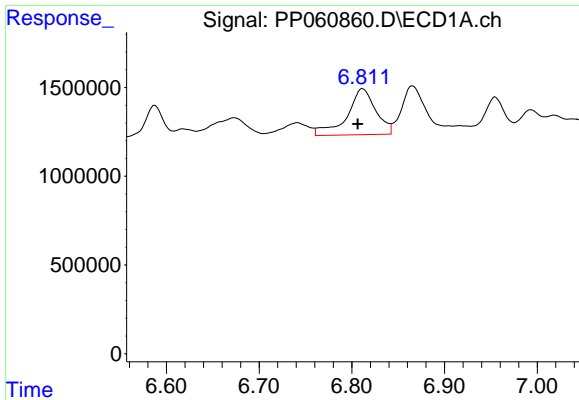
#26 AR-1254-1

R.T.: 6.587 min
 Delta R.T.: 0.002 min
 Response: 2882051
 Conc: 33.77 ng/ml



#26 AR-1254-1

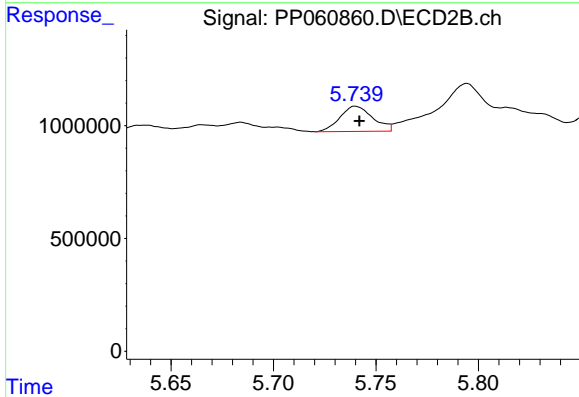
R.T.: 5.594 min
 Delta R.T.: 0.000 min
 Response: 2338421
 Conc: 23.64 ng/ml



#27 AR-1254-2

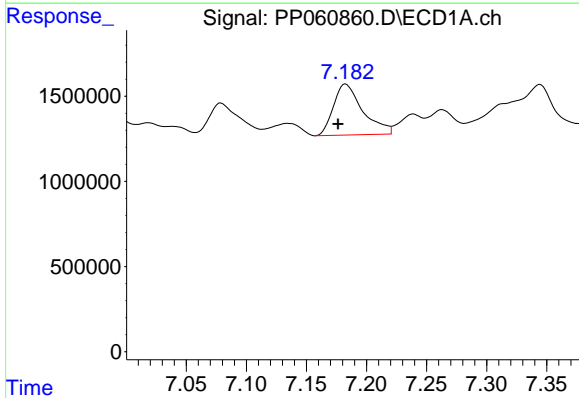
R.T.: 6.812 min
 Delta R.T.: 0.005 min
 Response: 5602926
 Conc: 43.90 ng/ml

Instrument :
 ECD_P
 ClientSampleId :



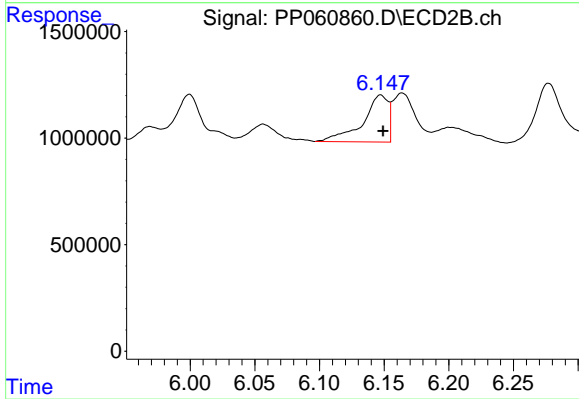
#27 AR-1254-2

R.T.: 5.740 min
 Delta R.T.: -0.002 min
 Response: 1247989
 Conc: 14.52 ng/ml



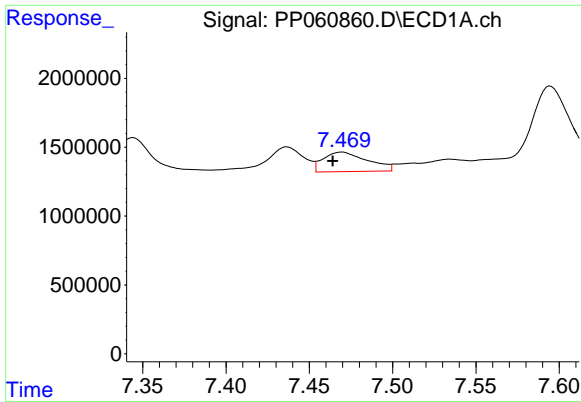
#28 AR-1254-3

R.T.: 7.183 min
 Delta R.T.: 0.006 min
 Response: 5074965
 Conc: 38.18 ng/ml



#28 AR-1254-3

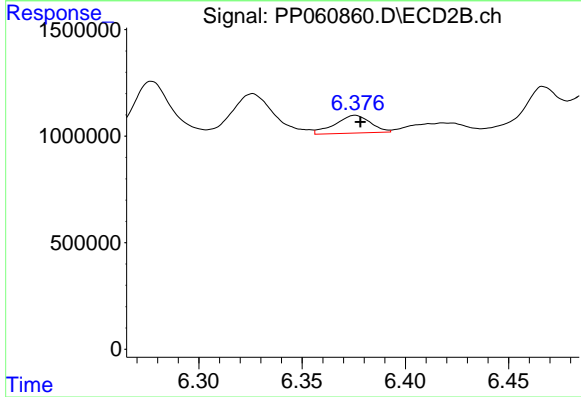
R.T.: 6.147 min
 Delta R.T.: -0.002 min
 Response: 2995020
 Conc: 20.90 ng/ml



#29 AR-1254-4

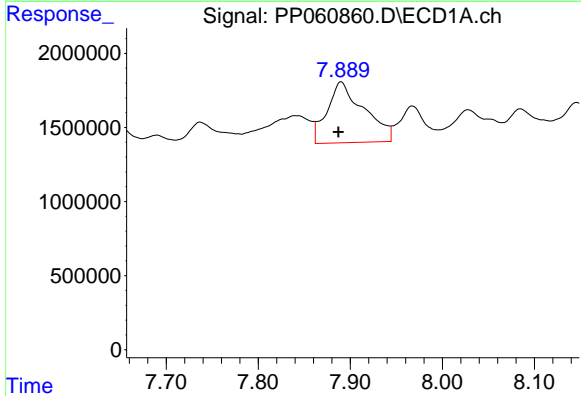
R.T.: 7.470 min
 Delta R.T.: 0.005 min
 Response: 2638239
 Conc: 26.83 ng/ml

Instrument :
 ECD_P
 ClientSampleId :



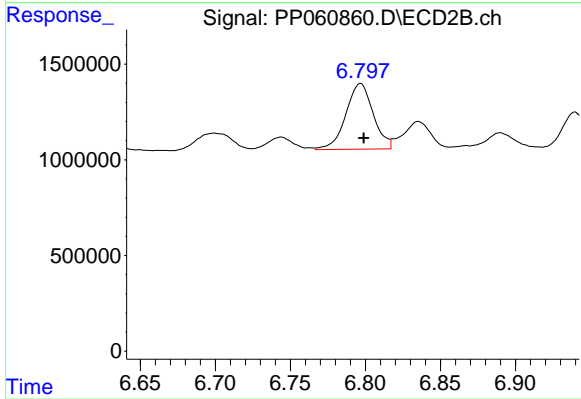
#29 AR-1254-4

R.T.: 6.376 min
 Delta R.T.: -0.002 min
 Response: 992575
 Conc: 11.39 ng/ml



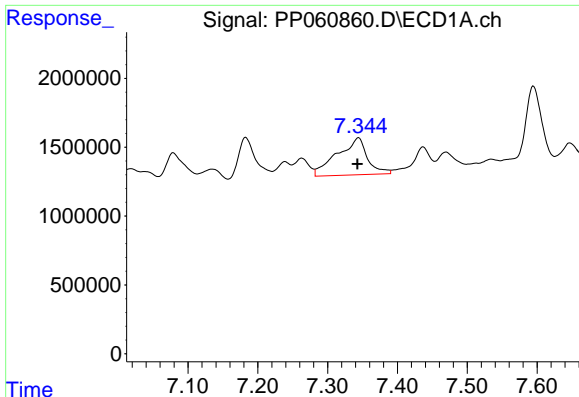
#30 AR-1254-5

R.T.: 7.890 min
 Delta R.T.: 0.003 min
 Response: 11441622
 Conc: 105.61 ng/ml



#30 AR-1254-5

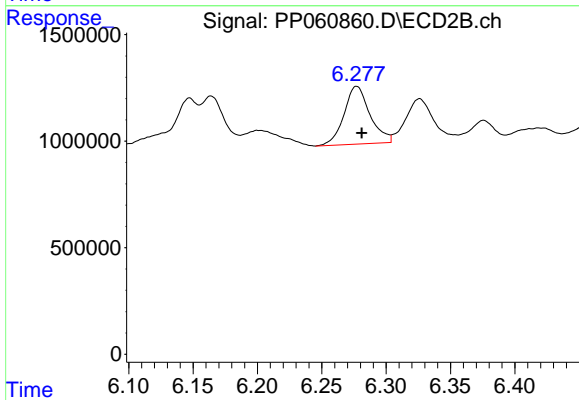
R.T.: 6.797 min
 Delta R.T.: -0.002 min
 Response: 4356641
 Conc: 34.38 ng/ml



#31 AR-1260-1

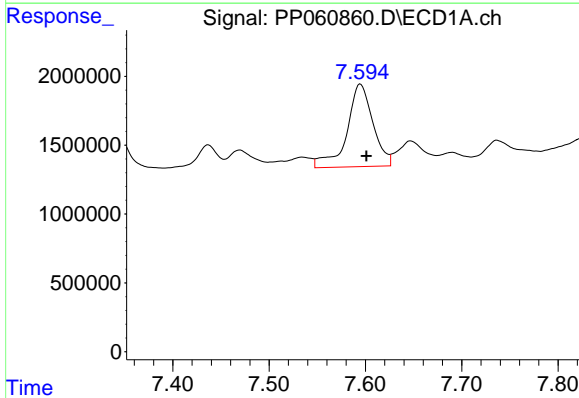
R.T.: 7.344 min
 Delta R.T.: 0.001 min
 Response: 8064541
 Conc: 76.93 ng/ml

Instrument :
 ECD_P
 ClientSampleId :



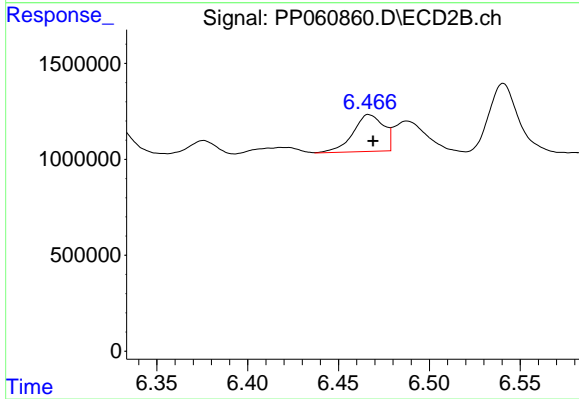
#31 AR-1260-1

R.T.: 6.277 min
 Delta R.T.: -0.004 min
 Response: 3809520
 Conc: 37.95 ng/ml



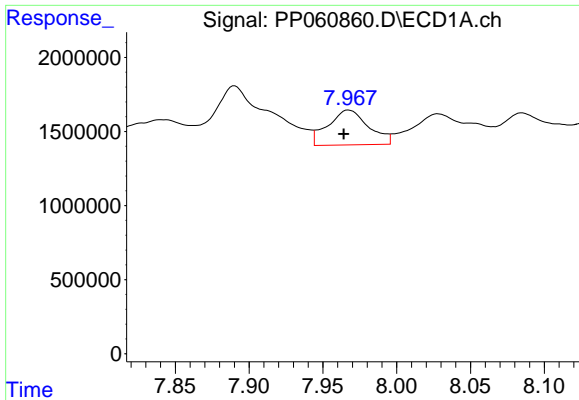
#32 AR-1260-2

R.T.: 7.595 min
 Delta R.T.: -0.006 min
 Response: 11248728
 Conc: 93.04 ng/ml



#32 AR-1260-2

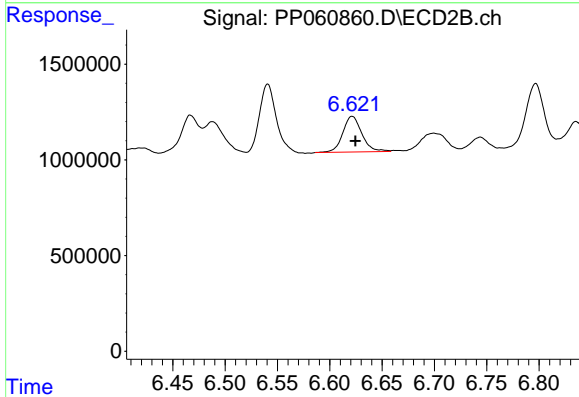
R.T.: 6.466 min
 Delta R.T.: -0.003 min
 Response: 2253334
 Conc: 18.89 ng/ml



#33 AR-1260-3

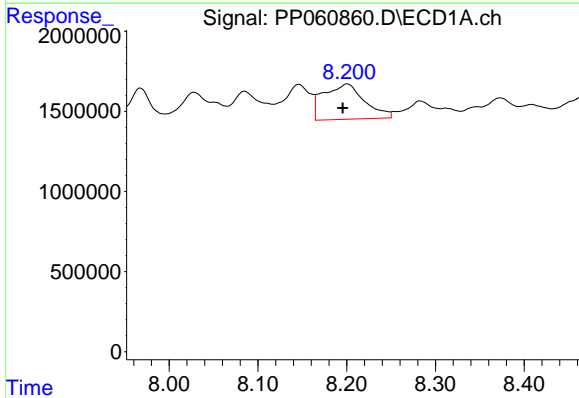
R.T.: 7.968 min
 Delta R.T.: 0.004 min
 Response: 4490818
 Conc: 48.45 ng/ml

Instrument :
 ECD_P
 ClientSampleId :



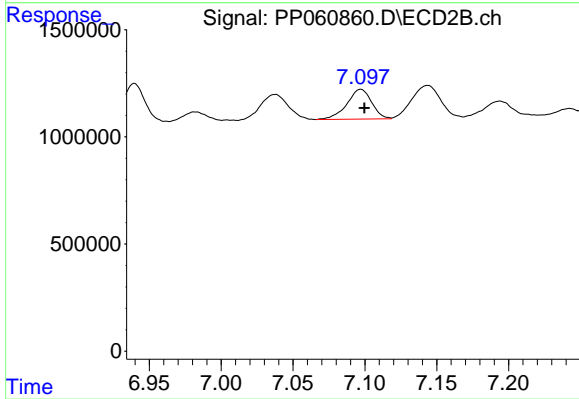
#33 AR-1260-3

R.T.: 6.621 min
 Delta R.T.: -0.003 min
 Response: 2375844
 Conc: 20.75 ng/ml



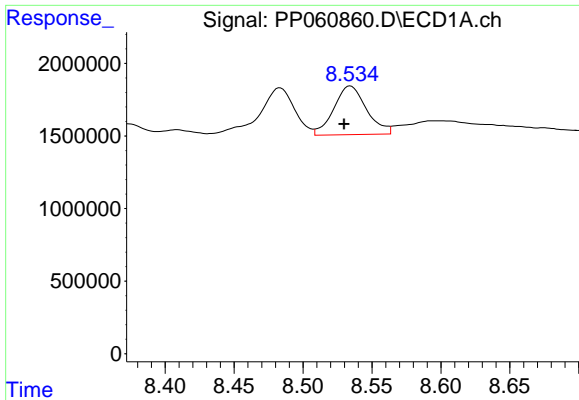
#34 AR-1260-4

R.T.: 8.201 min
 Delta R.T.: 0.005 min
 Response: 7063141
 Conc: 66.60 ng/ml



#34 AR-1260-4

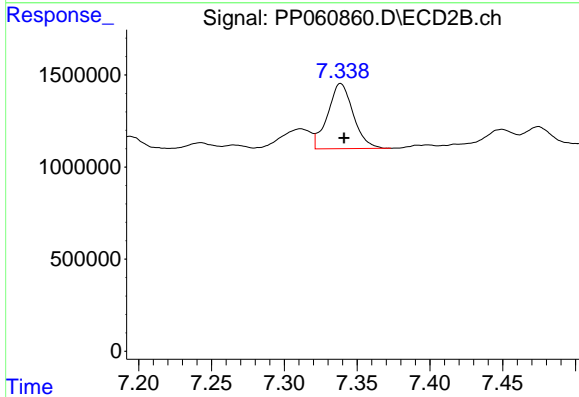
R.T.: 7.097 min
 Delta R.T.: -0.003 min
 Response: 1673914
 Conc: 17.59 ng/ml



#35 AR-1260-5

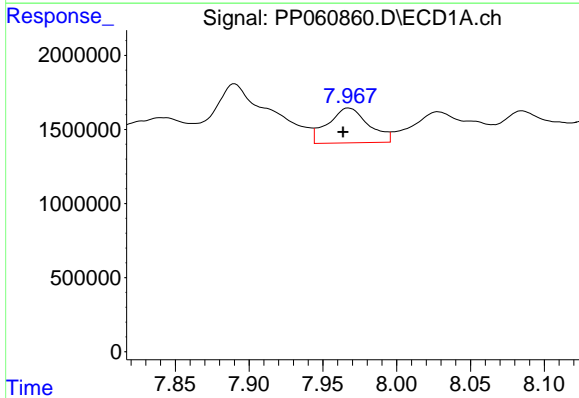
R.T.: 8.534 min
 Delta R.T.: 0.005 min
 Response: 5538698
 Conc: 28.62 ng/ml

Instrument :
 ECD_P
 ClientSampleId :



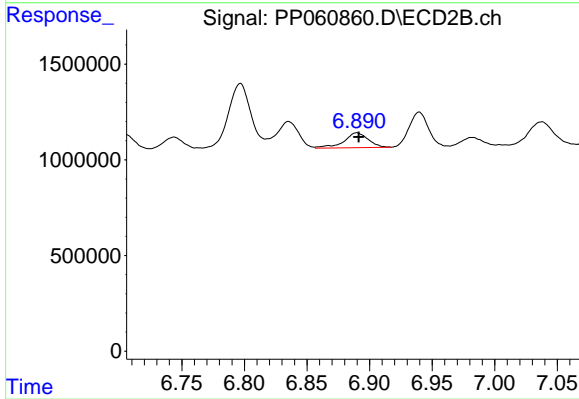
#35 AR-1260-5

R.T.: 7.339 min
 Delta R.T.: -0.002 min
 Response: 4311290
 Conc: 19.89 ng/ml



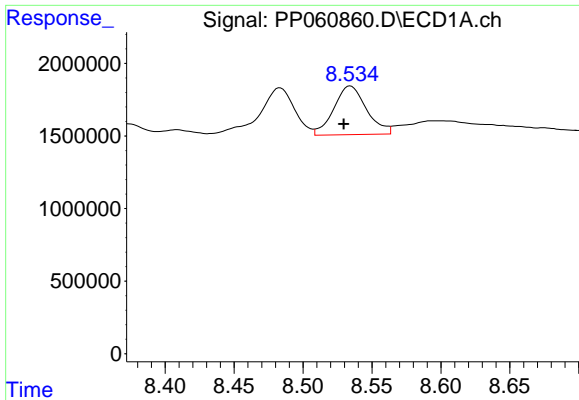
#36 AR-1262-1

R.T.: 7.968 min
 Delta R.T.: 0.004 min
 Response: 4490818
 Conc: 36.00 ng/ml



#36 AR-1262-1

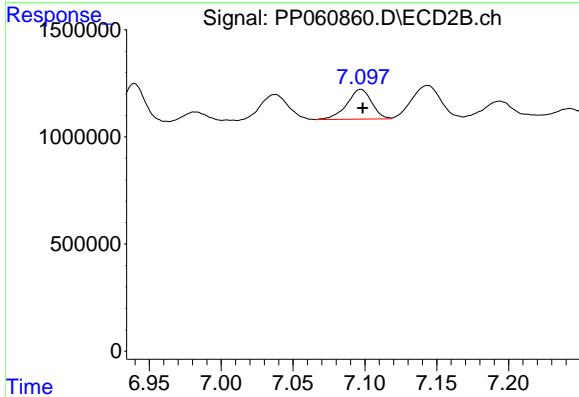
R.T.: 6.890 min
 Delta R.T.: -0.001 min
 Response: 1038742
 Conc: 19.40 ng/ml



#37 AR-1262-2

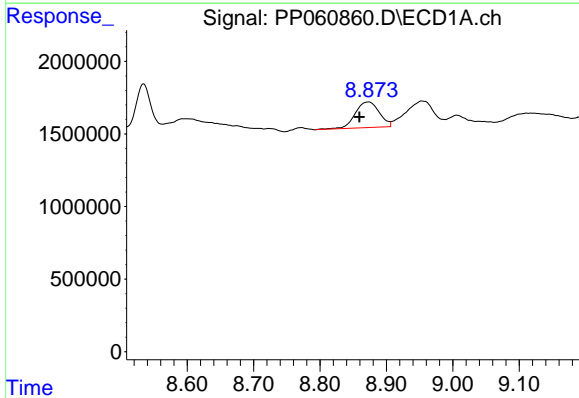
R.T.: 8.534 min
Delta R.T.: 0.005 min
Response: 5538698
Conc: 26.44 ng/ml

Instrument :
ECD_P
ClientSampleId :



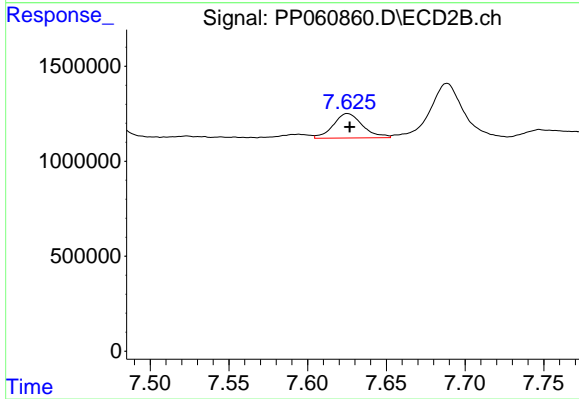
#37 AR-1262-2

R.T.: 7.097 min
Delta R.T.: -0.001 min
Response: 1673914
Conc: 14.19 ng/ml



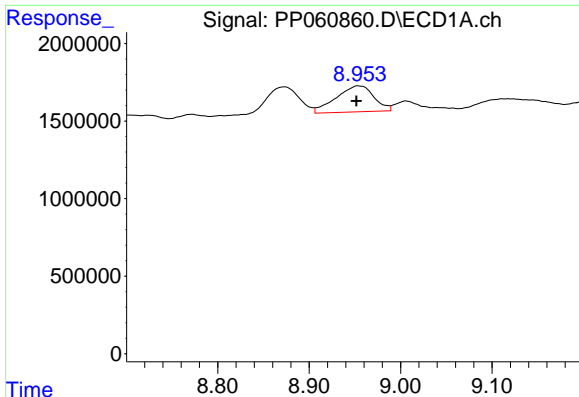
#38 AR-1262-3

R.T.: 8.873 min
Delta R.T.: 0.013 min
Response: 4464975
Conc: 29.50 ng/ml



#38 AR-1262-3

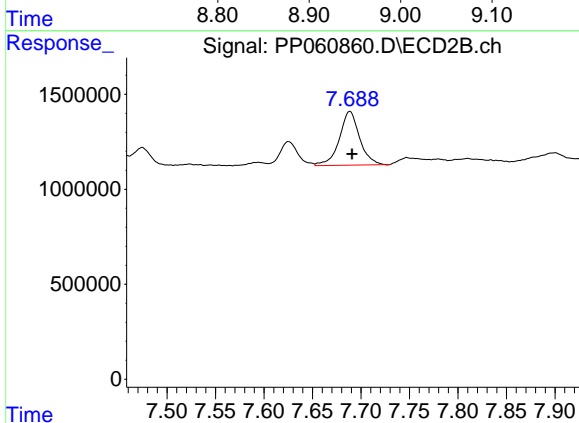
R.T.: 7.625 min
Delta R.T.: -0.001 min
Response: 1678121
Conc: 18.20 ng/ml



#39 AR-1262-4

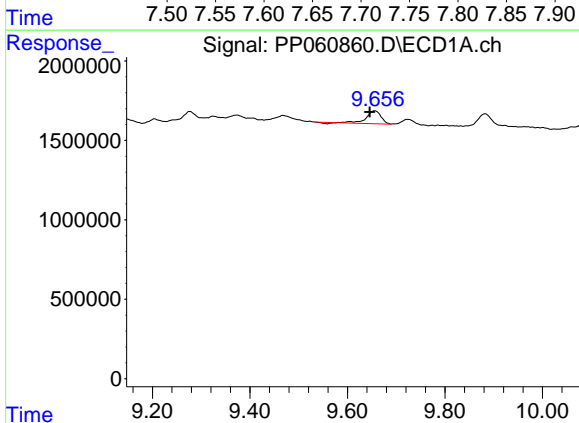
R.T.: 8.954 min
 Delta R.T.: 0.002 min
 Response: 4847874
 Conc: 40.51 ng/ml

Instrument :
 ECD_P
 ClientSampleId :



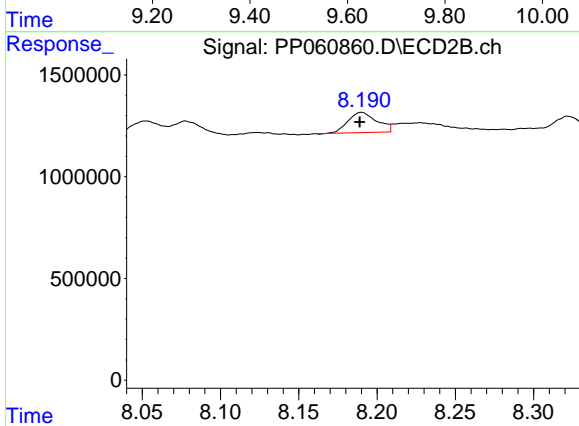
#39 AR-1262-4

R.T.: 7.689 min
 Delta R.T.: -0.002 min
 Response: 4119122
 Conc: 24.45 ng/ml



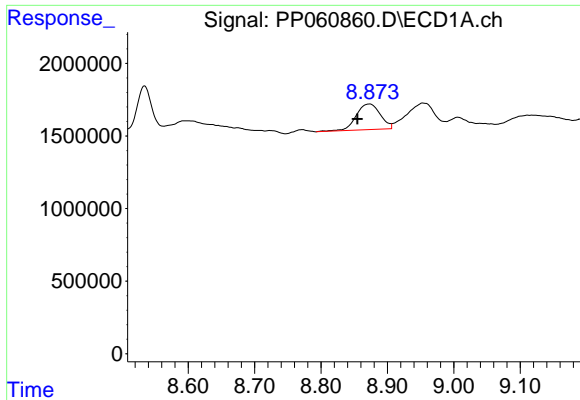
#40 AR-1262-5

R.T.: 9.656 min
 Delta R.T.: 0.010 min
 Response: 1657796
 Conc: 20.71 ng/ml



#40 AR-1262-5

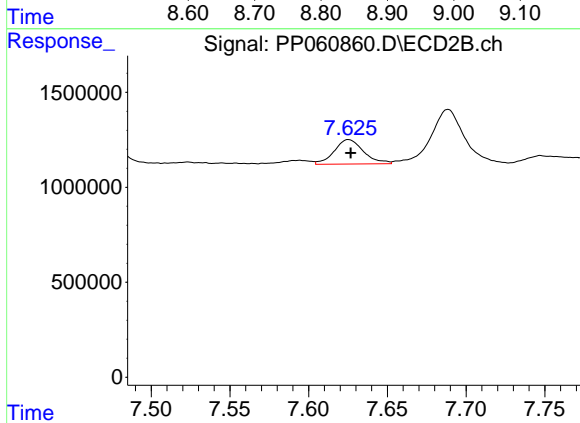
R.T.: 8.190 min
 Delta R.T.: 0.001 min
 Response: 1273578
 Conc: 16.44 ng/ml



#41 AR-1268-1

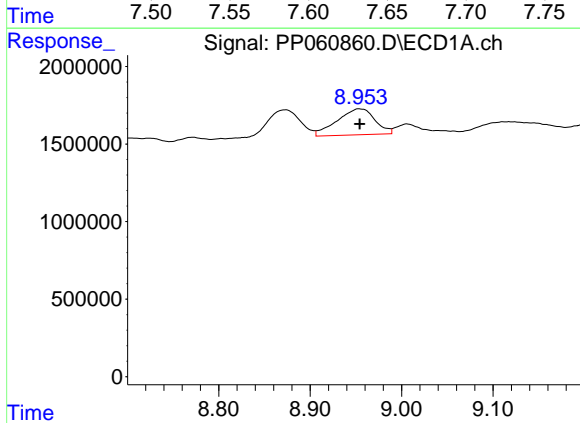
R.T.: 8.873 min
 Delta R.T.: 0.018 min
 Response: 4464975
 Conc: 16.83 ng/ml

Instrument :
 ECD_P
 ClientSampleId :



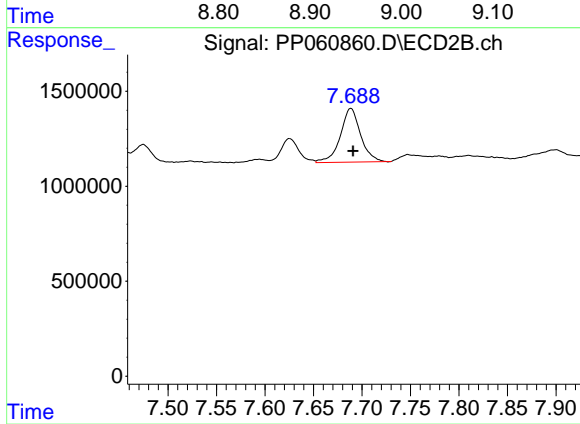
#41 AR-1268-1

R.T.: 7.625 min
 Delta R.T.: -0.001 min
 Response: 1678121
 Conc: 6.17 ng/ml



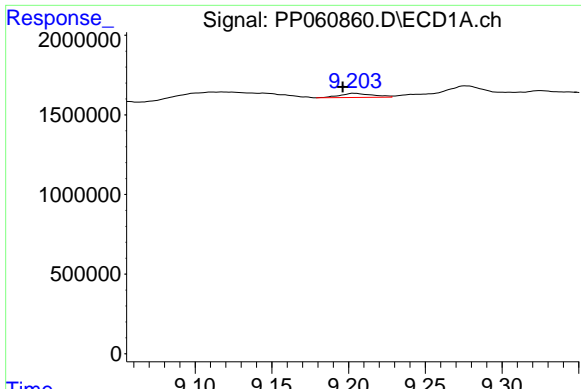
#42 AR-1268-2

R.T.: 8.954 min
 Delta R.T.: 0.000 min
 Response: 4847874
 Conc: 19.89 ng/ml



#42 AR-1268-2

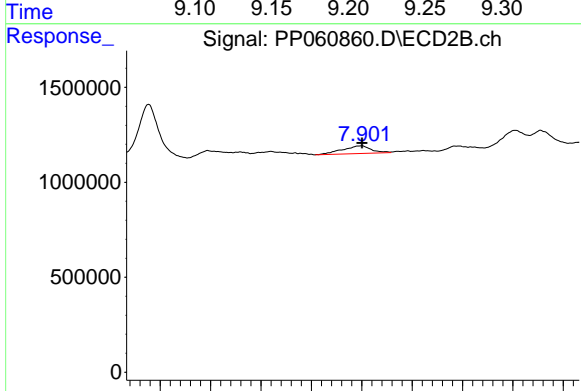
R.T.: 7.689 min
 Delta R.T.: -0.002 min
 Response: 4119122
 Conc: 16.89 ng/ml



#43 AR-1268-3

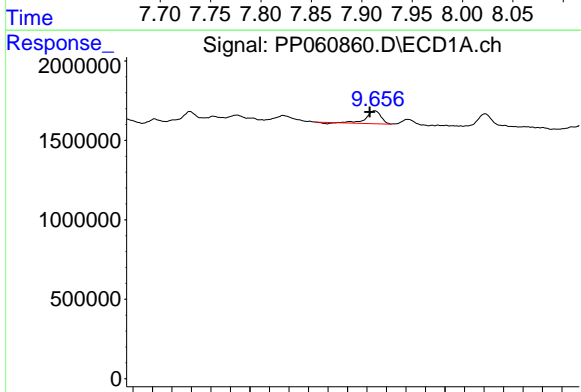
R.T.: 9.204 min
 Delta R.T.: 0.008 min
 Response: 380228
 Conc: 1.82 ng/ml

Instrument :
 ECD_P
 ClientSampleId :



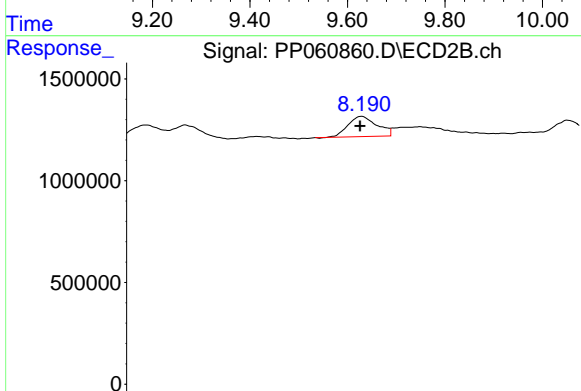
#43 AR-1268-3

R.T.: 7.900 min
 Delta R.T.: 0.000 min
 Response: 809044
 Conc: 3.78 ng/ml



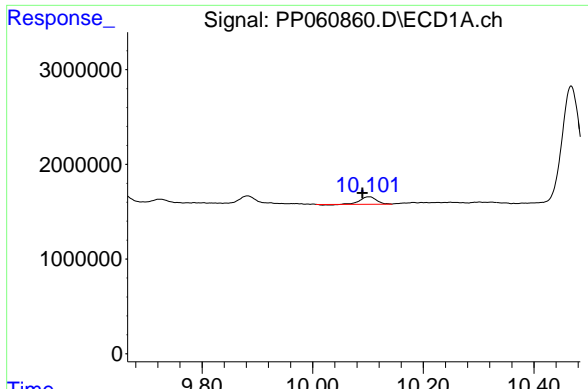
#44 AR-1268-4

R.T.: 9.656 min
 Delta R.T.: 0.011 min
 Response: 1657796
 Conc: 17.94 ng/ml



#44 AR-1268-4

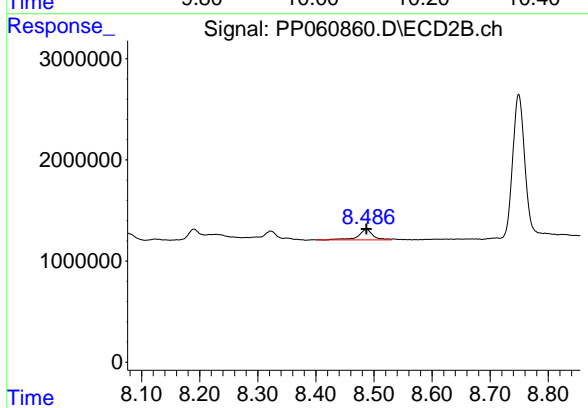
R.T.: 8.190 min
 Delta R.T.: 0.001 min
 Response: 1273578
 Conc: 14.52 ng/ml



#45 AR-1268-5

R.T.: 10.102 min
Delta R.T.: 0.012 min
Response: 1566220
Conc: 2.47 ng/ml

Instrument :
ECD_P
ClientSampleId :



#45 AR-1268-5

R.T.: 8.487 min
Delta R.T.: 0.000 min
Response: 1808153
Conc: 2.89 ng/ml