

Data Path : Z:\pestpcbsrv\HPCHEM1\ECD_P\Data\PP101023\
 Data File : PP060826.D
 Signal(s) : Signal #1: ECD1A.ch Signal #2: ECD2B.ch
 Acq On : 10 Oct 2023 09:56
 Operator : YP\AJ
 Sample : I.BLK
 Misc :
 ALS Vial : 2 Sample Multiplier: 1

Instrument :
 ECD_P
 ClientSampleId :
 I.BLK

Integration File signal 1: autoint1.e
 Integration File signal 2: autoint2.e
 Quant Time: Oct 11 01:30:13 2023
 Quant Method : Z:\pestpcbsrv\HPCHEM1\ECD_P\methods\PP092623.M
 Quant Title : GC EXTRACTABLES
 QLast Update : Wed Sep 27 11:30:16 2023
 Response via : Initial Calibration
 Integrator: ChemStation

Volume Inj. : 2 µl
 Signal #1 Phase : ZB-MR1 Signal #2 Phase: ZB-MR2
 Signal #1 Info : 30Mx0.32mmx 0.50µ Signal #2 Info : 30M x 0.32mm x 0.25µm

Compound	RT#1	RT#2	Resp#1	Resp#2	ng/ml	ng/ml

System Monitoring Compounds						
1) SA Tetrachlo...	4.530	3.682	45534865	31792980	20.333	21.359
2) SA Decachlor...	10.463	8.747	39515669	34347068	22.382	21.056

Target Compounds

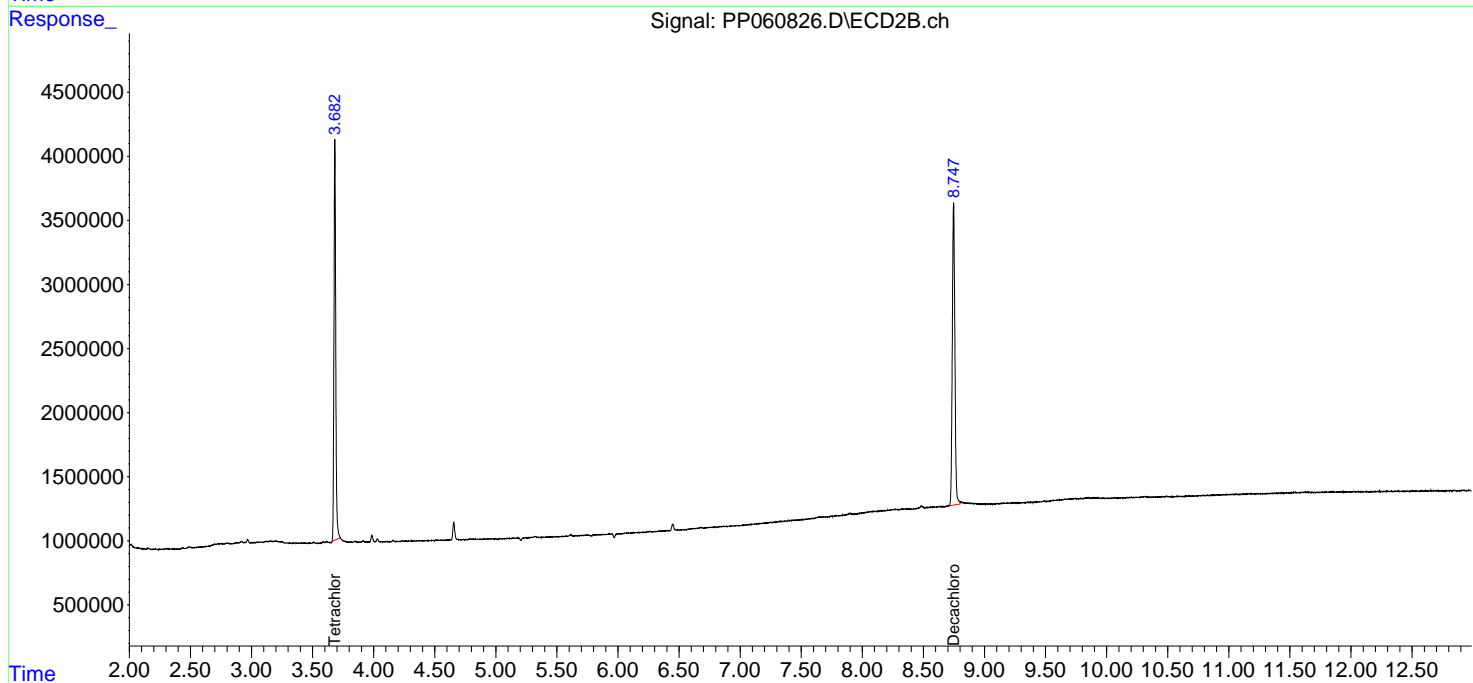
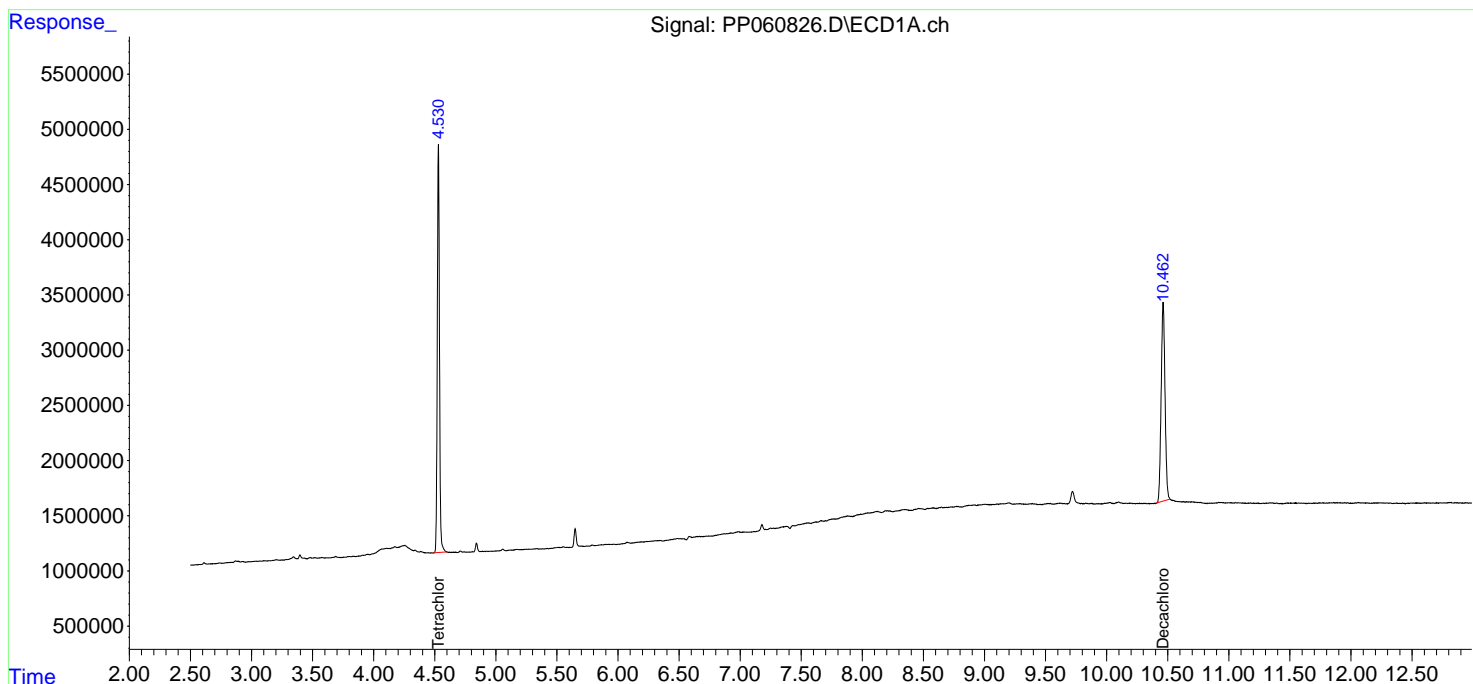
(f)=RT Delta > 1/2 Window (#)=Amounts differ by > 25% (m)=manual int.

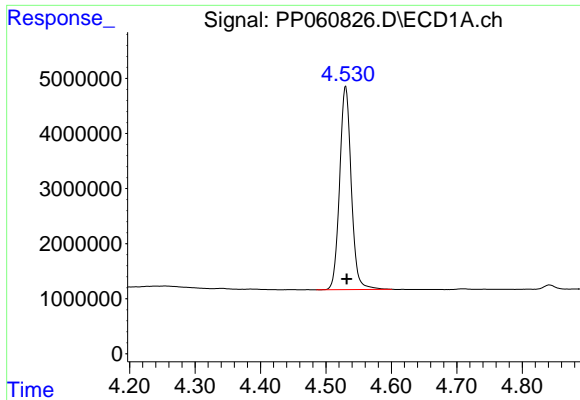
Data Path : Z:\pestpcbsrv\HPCHEM1\ECD_P\Data\PP101023\
 Data File : PP060826.D
 Signal(s) : Signal #1: ECD1A.ch Signal #2: ECD2B.ch
 Acq On : 10 Oct 2023 09:56
 Operator : YP\AJ
 Sample : I.BLK
 Misc :
 ALS Vial : 2 Sample Multiplier: 1

Instrument :
 ECD_P
 ClientSampleId :
 I.BLK

Integration File signal 1: autoint1.e
 Integration File signal 2: autoint2.e
 Quant Time: Oct 11 01:30:13 2023
 Quant Method : Z:\pestpcbsrv\HPCHEM1\ECD_P\methods\PP092623.M
 Quant Title : GC EXTRACTABLES
 QLast Update : Wed Sep 27 11:30:16 2023
 Response via : Initial Calibration
 Integrator: ChemStation

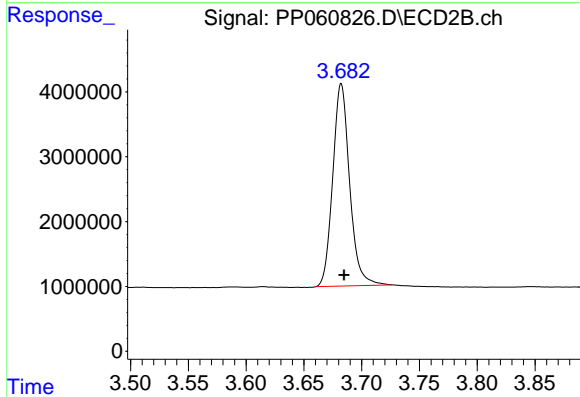
Volume Inj. : 2 µl
 Signal #1 Phase : ZB-MR1 Signal #2 Phase: ZB-MR2
 Signal #1 Info : 30Mx0.32mmx 0.50µ Signal #2 Info : 30M x 0.32mm x 0.25µm



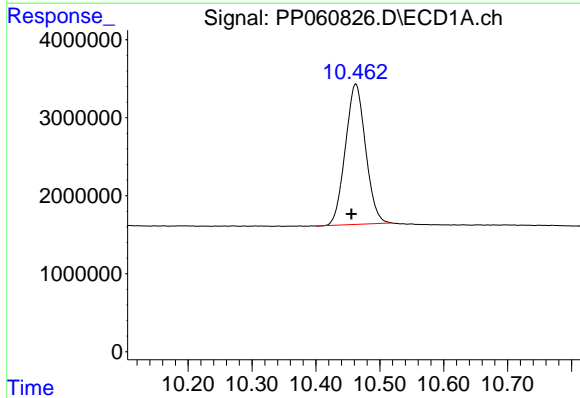


#1 Tetrachloro-m-xylene
 R.T.: 4.530 min
 Delta R.T.: -0.002 min
 Response: 45534865
 Conc: 20.33 ng/ml

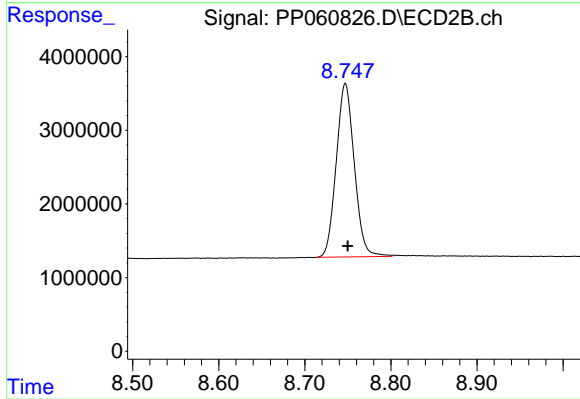
Instrument :
 ECD_P
 ClientSampleId :
 I.BLK



#1 Tetrachloro-m-xylene
 R.T.: 3.682 min
 Delta R.T.: -0.002 min
 Response: 31792980
 Conc: 21.36 ng/ml



#2 Decachlorobiphenyl
 R.T.: 10.463 min
 Delta R.T.: 0.007 min
 Response: 39515669
 Conc: 22.38 ng/ml



#2 Decachlorobiphenyl
 R.T.: 8.747 min
 Delta R.T.: -0.003 min
 Response: 34347068
 Conc: 21.06 ng/ml