

Data Path : Z:\pestpcbsrv\HPCHEM1\ECD\_P\Data\PP101023\  
 Data File : PP060870.D  
 Signal(s) : Signal #1: ECD1A.ch Signal #2: ECD2B.ch  
 Acq On : 10 Oct 2023 22:34  
 Operator : YP\AJ  
 Sample : 04815-01  
 Misc :  
 ALS Vial : 39 Sample Multiplier: 1

**Instrument :**  
 ECD\_P  
**ClientSampleId :**  
 CHRT-26333

**Manual Integrations**  
**APPROVED**

Reviewed By :Yogesh Patel 10/11/2023  
 Supervised By :Ankita Jodhani 10/11/2023

Integration File signal 1: autoint1.e  
 Integration File signal 2: autoint2.e  
 Quant Time: Oct 11 02:37:21 2023  
 Quant Method : Z:\pestpcbsrv\HPCHEM1\ECD\_P\methods\PP092623.M  
 Quant Title : GC EXTRACTABLES  
 QLast Update : Wed Sep 27 11:30:16 2023  
 Response via : Initial Calibration  
 Integrator: ChemStation

Volume Inj. : 2 µl  
 Signal #1 Phase : ZB-MR1 Signal #2 Phase: ZB-MR2  
 Signal #1 Info : 30Mx0.32mmx 0.50µ Signal #2 Info : 30M x 0.32mm x 0.25µm

Compound	RT#1	RT#2	Resp#1	Resp#2	ng/ml	ng/ml
-----						
System Monitoring Compounds						
1) SA Tetrachlo...	4.542	3.700	27807704	19765920	12.417	13.279m
2) SA Decachlor...	10.470	8.746	29833856	92951952	16.898	56.984 #

Target Compounds

(f)=RT Delta > 1/2 Window (#)=Amounts differ by > 25% (m)=manual int.

Data Path : Z:\pestpcbsrv\HPCHEM1\ECD\_P\Data\PP101023\  
 Data File : PP060870.D  
 Signal(s) : Signal #1: ECD1A.ch Signal #2: ECD2B.ch  
 Acq On : 10 Oct 2023 22:34  
 Operator : YP\AJ  
 Sample : 04815-01  
 Misc :  
 ALS Vial : 39 Sample Multiplier: 1

**Instrument :**

ECD\_P

**ClientSampleId :**

CHRT-26333

**Manual Integrations**

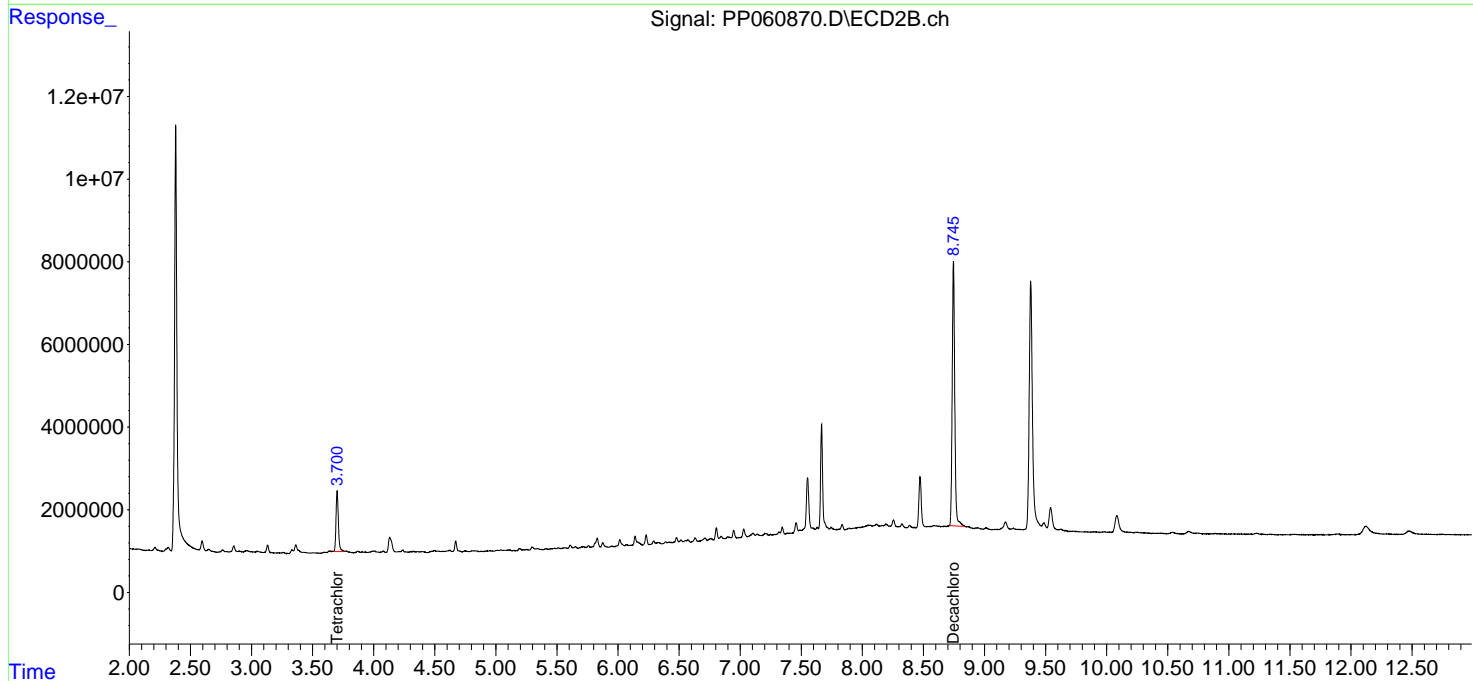
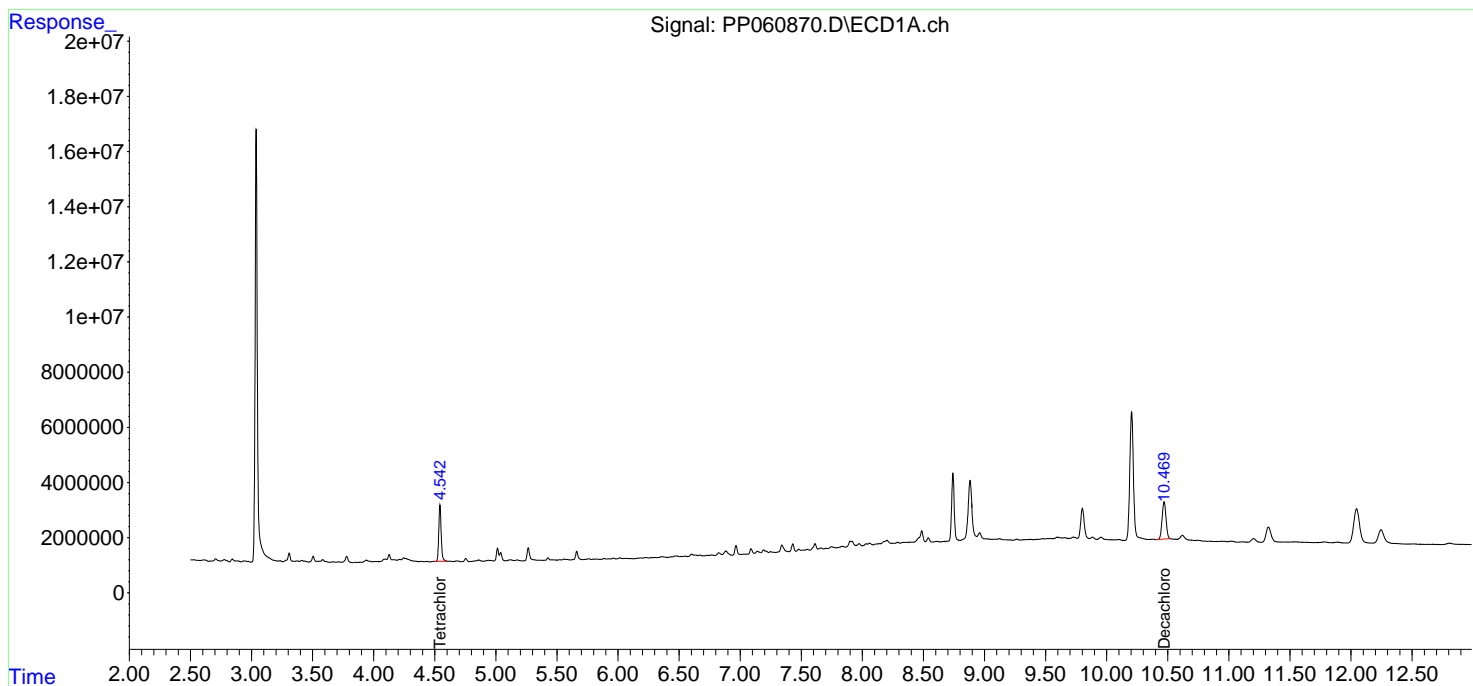
**APPROVED**

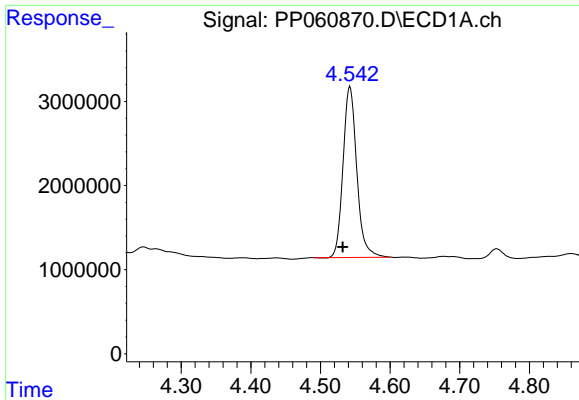
Reviewed By :Yogesh Patel 10/11/2023

Supervised By :Ankita Jodhani 10/11/2023

Integration File signal 1: autoint1.e  
 Integration File signal 2: autoint2.e  
 Quant Time: Oct 11 02:37:21 2023  
 Quant Method : Z:\pestpcbsrv\HPCHEM1\ECD\_P\methods\PP092623.M  
 Quant Title : GC EXTRACTABLES  
 QLast Update : Wed Sep 27 11:30:16 2023  
 Response via : Initial Calibration  
 Integrator: ChemStation

Volume Inj. : 2 µl  
 Signal #1 Phase : ZB-MR1 Signal #2 Phase: ZB-MR2  
 Signal #1 Info : 30Mx0.32mmx 0.50µ Signal #2 Info : 30M x 0.32mm x 0.25µm

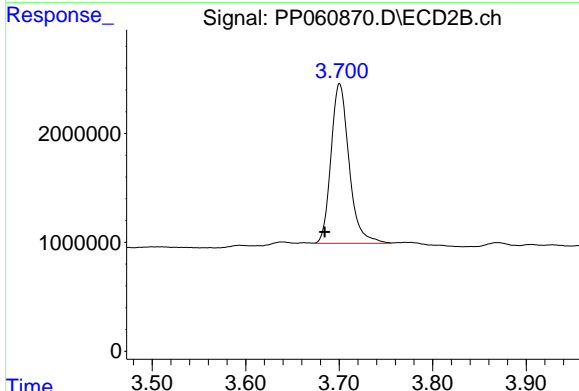




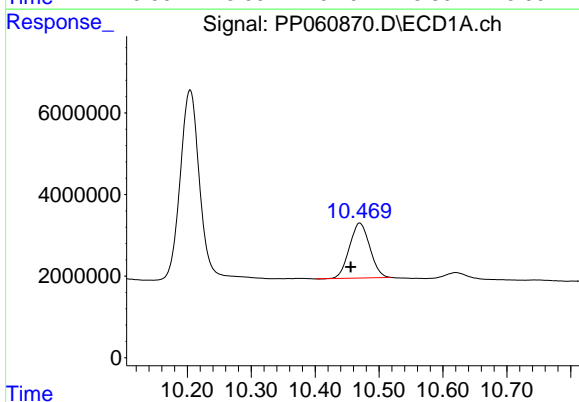
#1 Tetrachloro-m-xylene  
 R.T.: 4.542 min  
 Delta R.T.: 0.010 min  
 Response: 27807704  
 Conc: 12.42 ng/ml

Instrument : ECD\_P  
 Client Sample Id : CHRT-26333

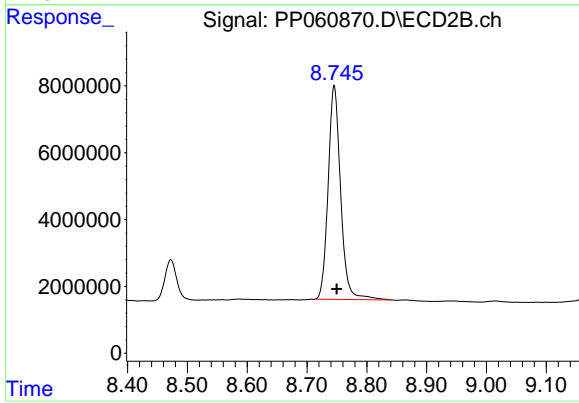
Manual Integrations  
**APPROVED**  
 Reviewed By :Yogesh Patel 10/11/2023  
 Supervised By :Ankita Jodhani 10/11/2023



#1 Tetrachloro-m-xylene  
 R.T.: 3.700 min  
 Delta R.T.: 0.015 min  
 Response: 19765920  
 Conc: 13.28 ng/ml m



#2 Decachlorobiphenyl  
 R.T.: 10.470 min  
 Delta R.T.: 0.014 min  
 Response: 29833856  
 Conc: 16.90 ng/ml



#2 Decachlorobiphenyl  
 R.T.: 8.746 min  
 Delta R.T.: -0.004 min  
 Response: 92951952  
 Conc: 56.98 ng/ml