

Data Path : Z:\pestpcbsrv\HPCHEM1\ECD_P\Data\PP101118\
 Data File : PP027688.D
 Signal(s) : Signal #1: ECD1A.CH Signal #2: ECD2B.CH
 Acq On : 11 Oct 2018 19:32
 Operator : EI\MA
 Sample : HSTDCCC750
 Misc :
 ALS Vial : 3 Sample Multiplier: 1

Instrument :
 ECD_P
 ClientSampleId :

Integration File signal 1: autoint1.e
 Integration File signal 2: autoint2.e
 Quant Time: Oct 12 07:27:30 2018
 Quant Method : Z:\pestpcbsrv\HPCHEM1\ECD_P\methods\PP100918.M
 Quant Title : 8080.M
 QLast Update : Thu Oct 11 18:41:33 2018
 Response via : Initial Calibration
 Integrator: ChemStation 6890 Scale Mode: Large solvent peaks clipped

Volume Inj. : 2 µl
 Signal #1 Phase : ZB-CLPesticides-1 Signal #2 Phase: ZB-CLPesticides-2
 Signal #1 Info : 30M x 0.32mm x0.5 Signal #2 Info : 30M x 0.32mm x 0.25µm

	Compound	RT#1	RT#2	Resp#1	Resp#2	ng/ml	ng/ml

System Monitoring Compounds							
4) S	2,4-DCAA	12.044	12.158	196.7E6	336.6E6	795.164	799.854
Target Compounds							
1) T	Dalapon	3.310	2.982	440.6E6	393.2E6	733.047	735.897
2) T	3,5-DICHL...	10.457	10.249	346.8E6	380.5E6	723.830	739.881
3) T	4-Nitroph...	11.620	11.303	286.8E6	142.2E6	737.809	792.472
5) T	DICAMBA	12.365	12.468	1130.0E6	1209.7E6	734.531	741.789
6) T	MCP P	12.708	12.660	32865111	64330598	72.764	77.677
7) T	MCPA	12.952	13.049	49338599	100.9E6	71.249	77.572
8) T	DICHLORPROP	13.562	13.583	273.1E6	305.0E6	770.660	749.540
9) T	2,4-D	13.912	14.070	275.5E6	384.7E6	803.329	799.503
10) T	Pentachlo...	14.329	14.679	5919.2E6	4858.6E6	740.843	742.251
11) T	2,4,5-TP ...	15.192	15.251	2148.2E6	1892.7E6	757.303	769.925
12) T	2,4,5-T	15.582	15.891	1781.1E6	1377.1E6	807.024	838.009
13) T	2,4-DB	16.345	16.495	127.6E6	160.2E6	803.233	801.715
14) T	DINOSEB	17.832	16.884	1440.4E6	1213.8E6	732.532	739.345
15) T	Picloram	17.594	18.265	1725.4E6	1469.9E6	740.337	772.235
16) T	DCPA	18.197	18.144	3162.1E6	2400.9E6	762.415	770.973

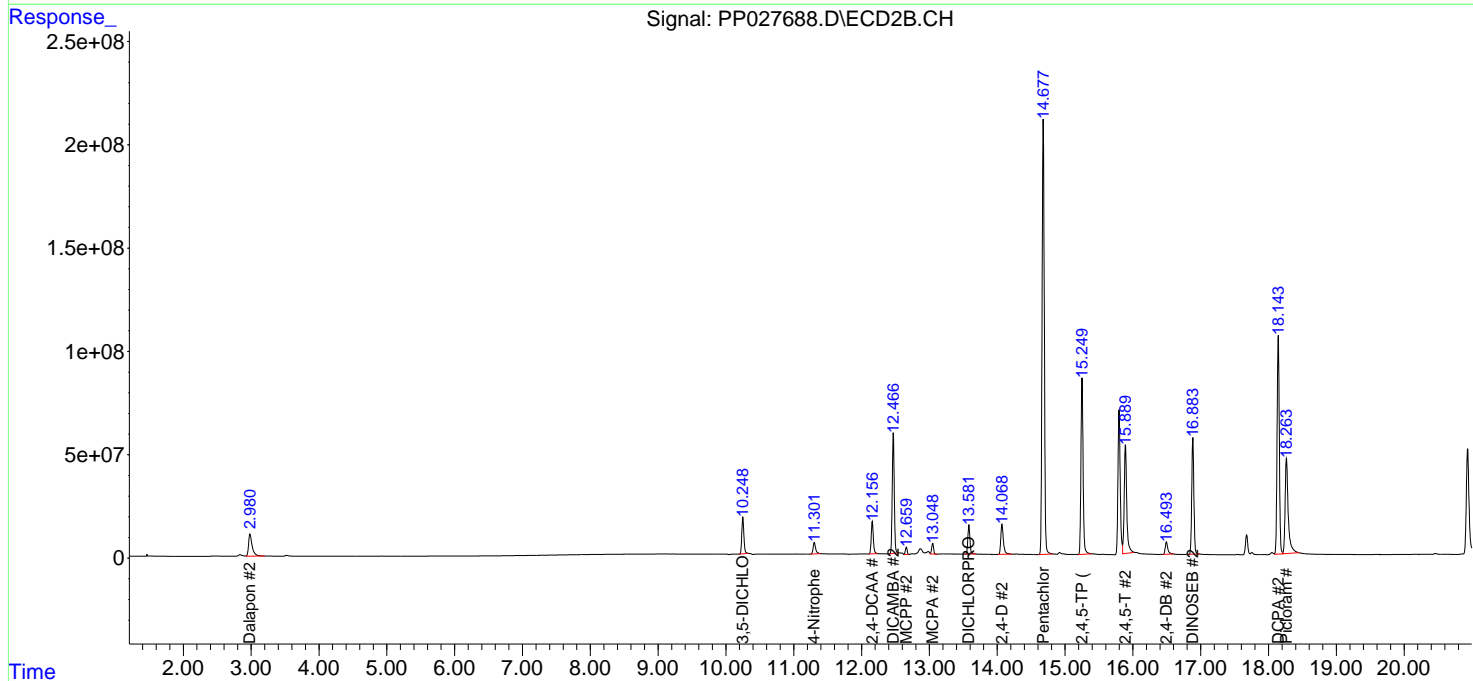
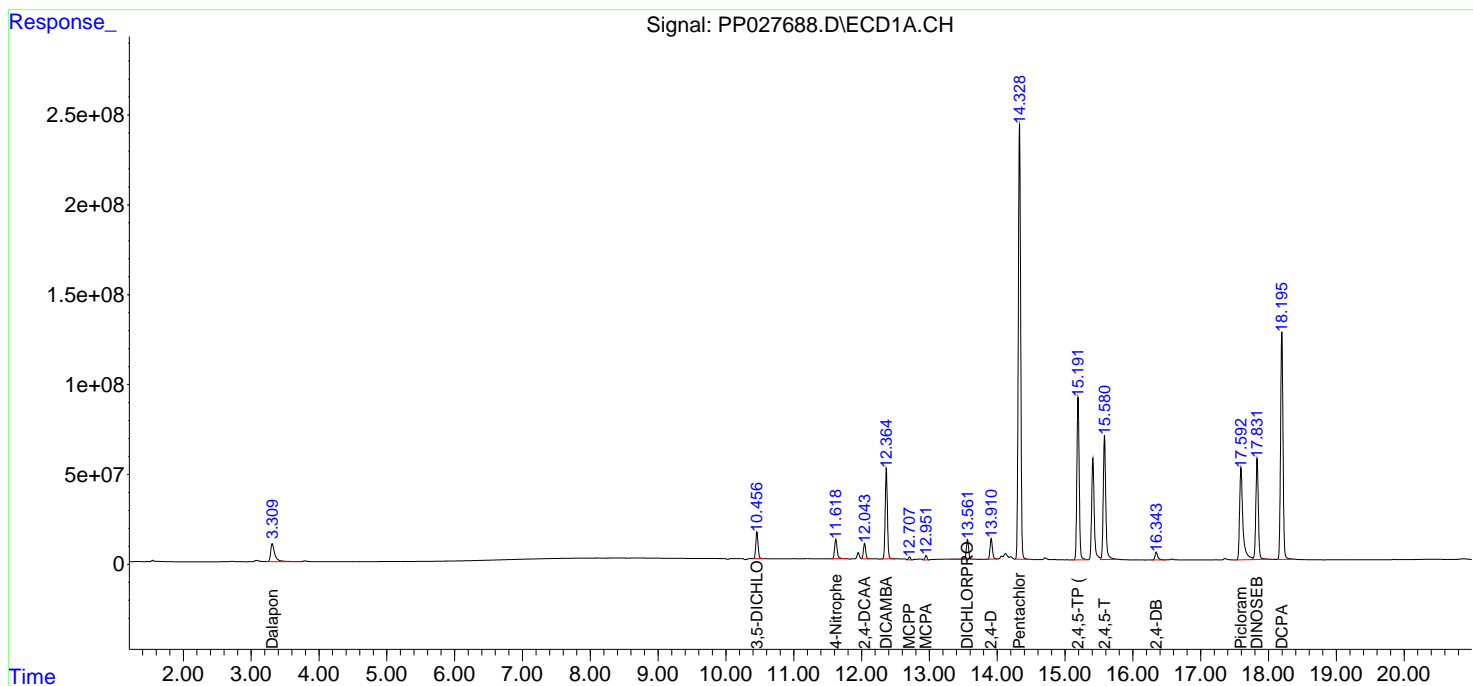
(f)=RT Delta > 1/2 Window (#)=Amounts differ by > 25% (m)=manual int.

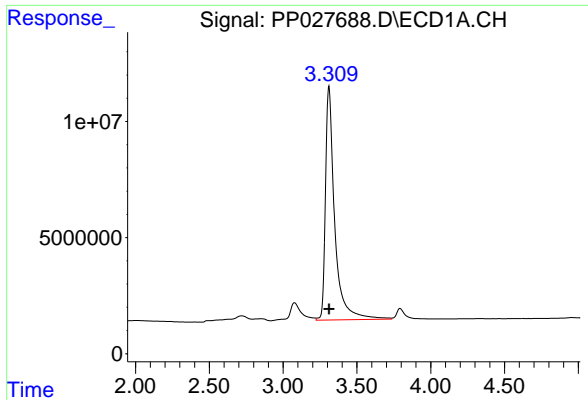
Data Path : Z:\pestpcbsrv\HPCHEM1\ECD_P\Data\PP101118\
 Data File : PP027688.D
 Signal(s) : Signal #1: ECD1A.CH Signal #2: ECD2B.CH
 Acq On : 11 Oct 2018 19:32
 Operator : EI\MA
 Sample : HSTDCCC750
 Misc :
 ALS Vial : 3 Sample Multiplier: 1

Instrument :
 ECD_P
 ClientSampled :

Integration File signal 1: autoint1.e
 Integration File signal 2: autoint2.e
 Quant Time: Oct 12 07:27:30 2018
 Quant Method : Z:\pestpcbsrv\HPCHEM1\ECD_P\methods\PP100918.M
 Quant Title : 8080.M
 QLast Update : Thu Oct 11 18:41:33 2018
 Response via : Initial Calibration
 Integrator: ChemStation 6890 Scale Mode: Large solvent peaks clipped

Volume Inj. : 2 µl
 Signal #1 Phase : ZB-CLPesticides-1 Signal #2 Phase: ZB-CLPesticides-2
 Signal #1 Info : 30M x 0.32mm x0.5 Signal #2 Info : 30M x 0.32mm x 0.25µm

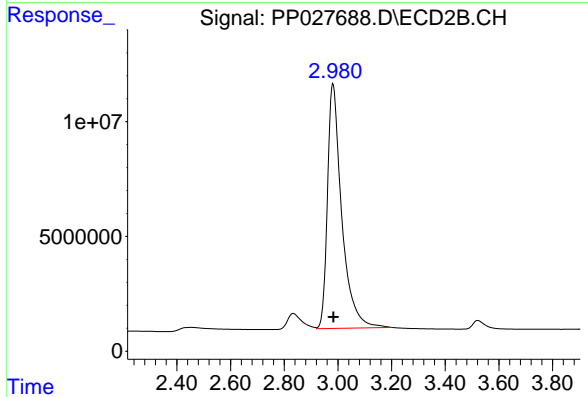




#1 Dalapon

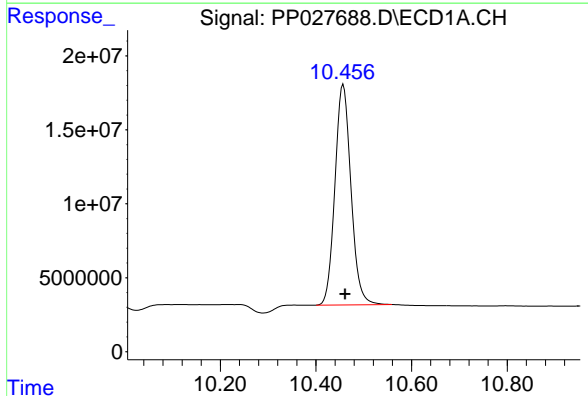
R.T.: 3.310 min
 Delta R.T.: -0.002 min
 Response: 440645817
 Conc: 733.05 ng/ml

Instrument :
 ECD_P
 ClientSampleId :



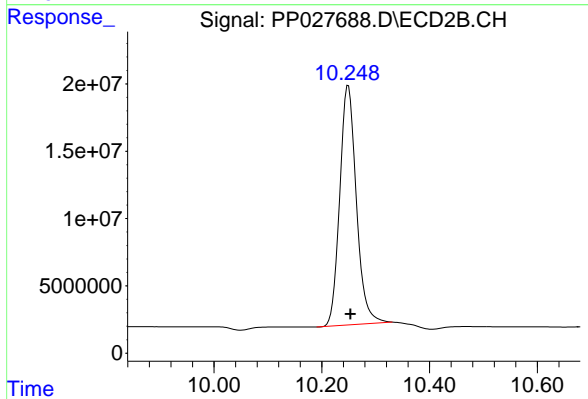
#1 Dalapon

R.T.: 2.982 min
 Delta R.T.: -0.001 min
 Response: 393224975
 Conc: 735.90 ng/ml



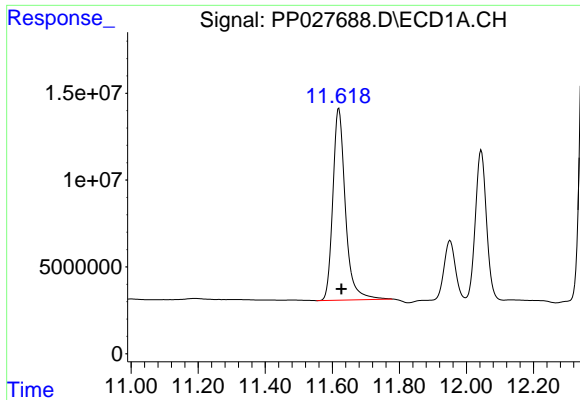
#2 3,5-DICHLOROBENZOIC ACID

R.T.: 10.457 min
 Delta R.T.: -0.004 min
 Response: 346837545
 Conc: 723.83 ng/ml



#2 3,5-DICHLOROBENZOIC ACID

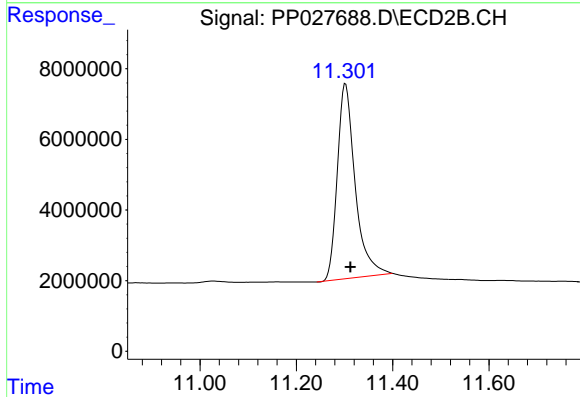
R.T.: 10.249 min
 Delta R.T.: -0.004 min
 Response: 380515303
 Conc: 739.88 ng/ml



#3 4-Nitrophenol

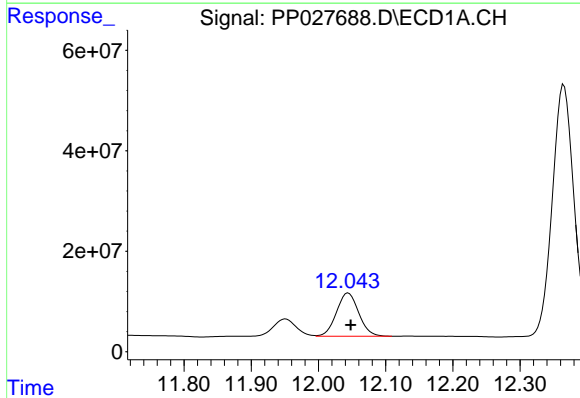
R.T.: 11.620 min
 Delta R.T.: -0.007 min
 Response: 286810182
 Conc: 737.81 ng/ml

Instrument :
 ECD_P
 ClientSampleId :



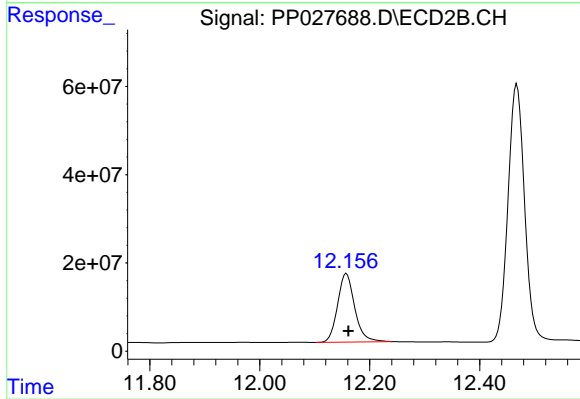
#3 4-Nitrophenol

R.T.: 11.303 min
 Delta R.T.: -0.010 min
 Response: 142189705
 Conc: 792.47 ng/ml



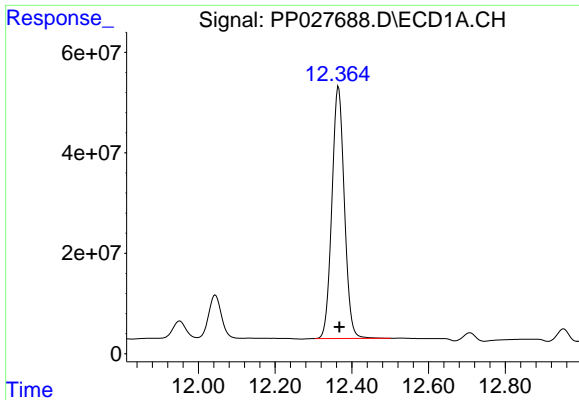
#4 2,4-DCAA

R.T.: 12.044 min
 Delta R.T.: -0.004 min
 Response: 196719847
 Conc: 795.16 ng/ml



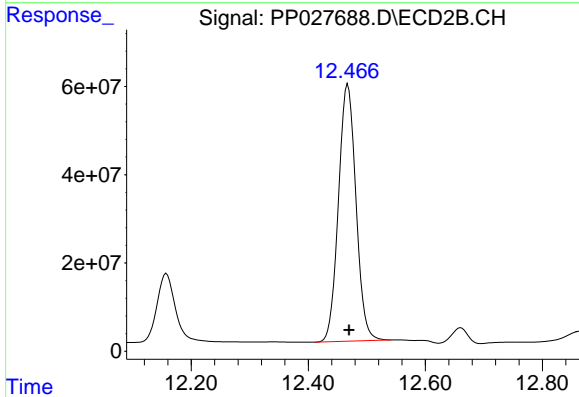
#4 2,4-DCAA

R.T.: 12.158 min
 Delta R.T.: -0.004 min
 Response: 336574170
 Conc: 799.85 ng/ml

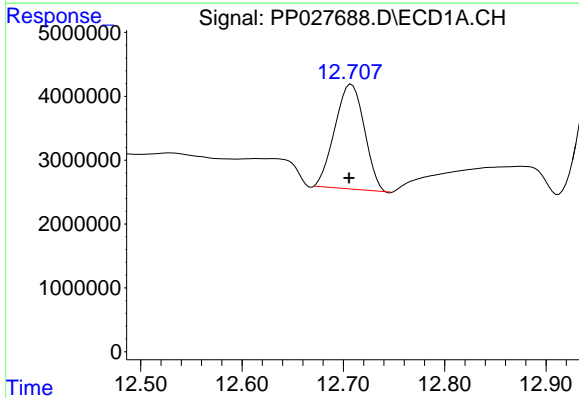


#5 DICAMBA
 R.T.: 12.365 min
 Delta R.T.: -0.002 min
 Response: 1130001989
 Conc: 734.53 ng/ml

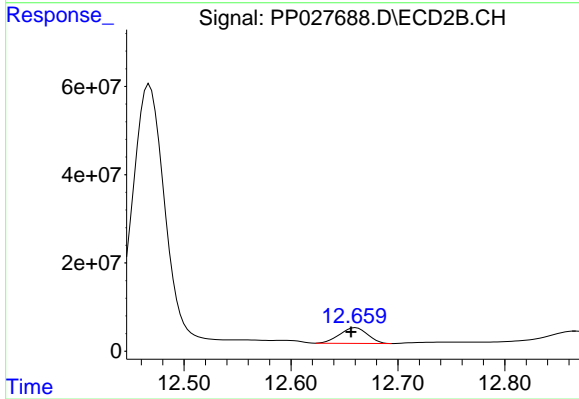
Instrument :
 ECD_P
 ClientSampleId :



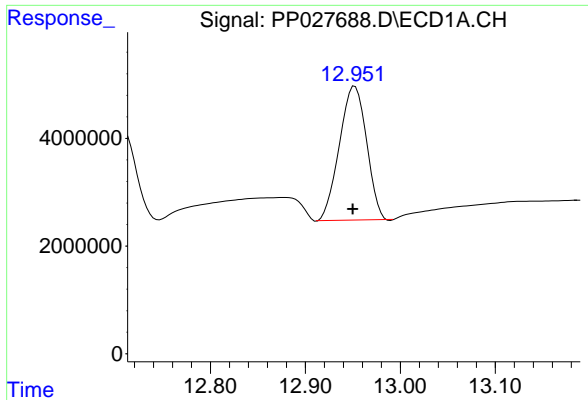
#5 DICAMBA
 R.T.: 12.468 min
 Delta R.T.: -0.002 min
 Response: 1209702735
 Conc: 741.79 ng/ml



#6 MCP
 R.T.: 12.708 min
 Delta R.T.: 0.002 min
 Response: 32865111
 Conc: 72.76 ug/ml

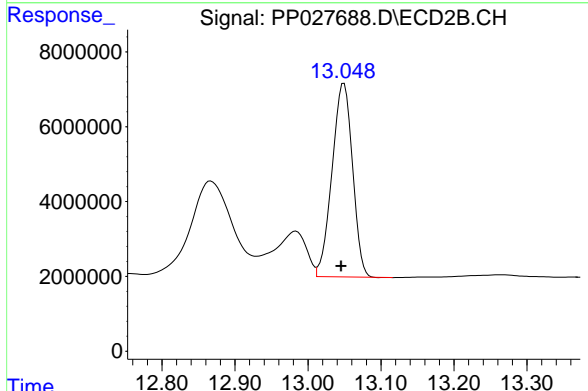


#6 MCP
 R.T.: 12.660 min
 Delta R.T.: 0.004 min
 Response: 64330598
 Conc: 77.68 ug/ml

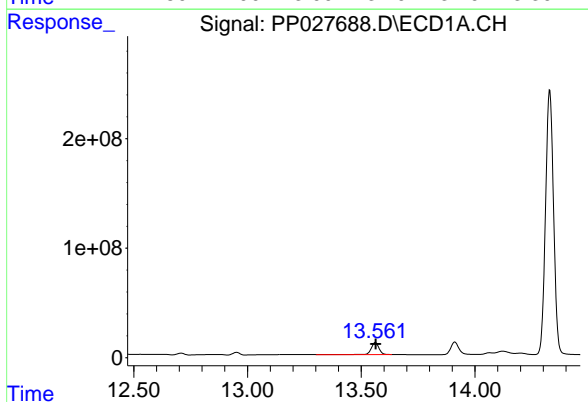


#7 MCPA
 R.T.: 12.952 min
 Delta R.T.: 0.002 min
 Response: 49338599
 Conc: 71.25 ug/ml

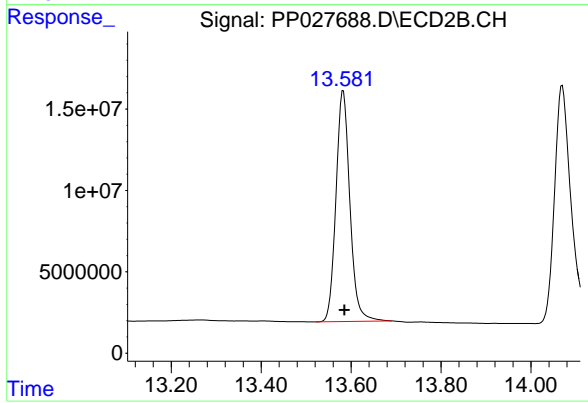
Instrument :
 ECD_P
 ClientSampleId :



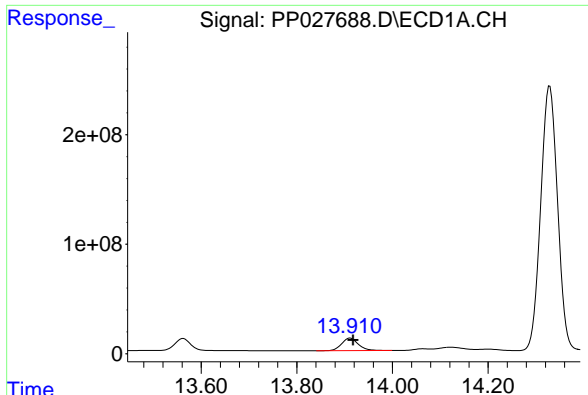
#7 MCPA
 R.T.: 13.049 min
 Delta R.T.: 0.004 min
 Response: 100942480
 Conc: 77.57 ug/ml



#8 DICHLORPROP
 R.T.: 13.562 min
 Delta R.T.: -0.001 min
 Response: 273068625
 Conc: 770.66 ng/ml



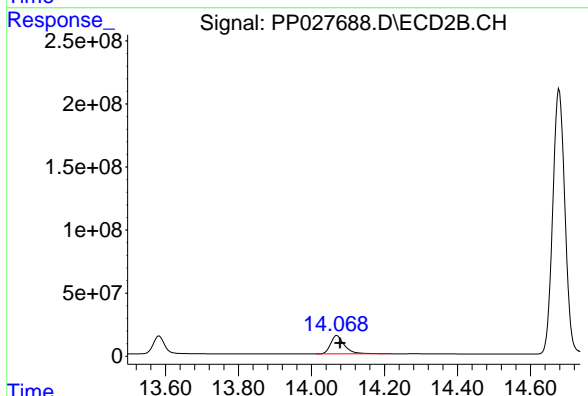
#8 DICHLORPROP
 R.T.: 13.583 min
 Delta R.T.: -0.003 min
 Response: 304961692
 Conc: 749.54 ng/ml



#9 2,4-D

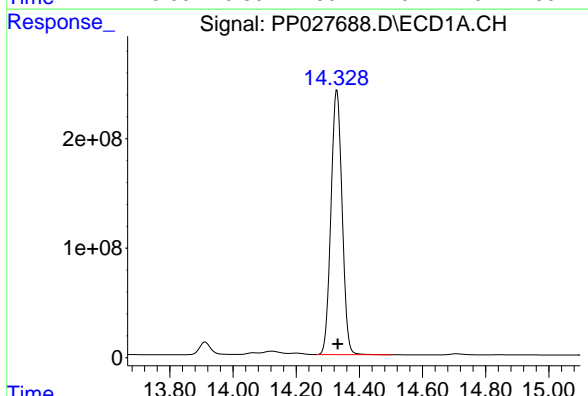
R.T.: 13.912 min
 Delta R.T.: -0.006 min
 Response: 275470096
 Conc: 803.33 ng/ml

Instrument :
 ECD_P
 ClientSampled :



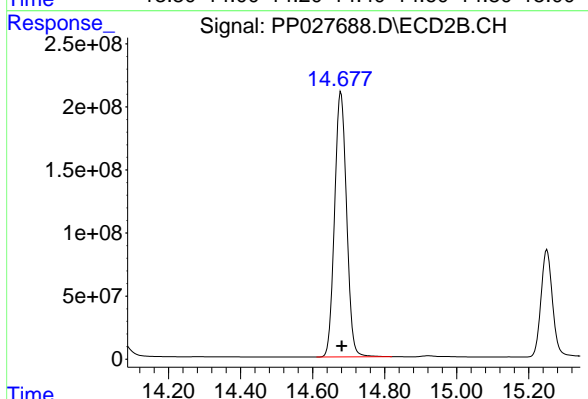
#9 2,4-D

R.T.: 14.070 min
 Delta R.T.: -0.009 min
 Response: 384662054
 Conc: 799.50 ng/ml



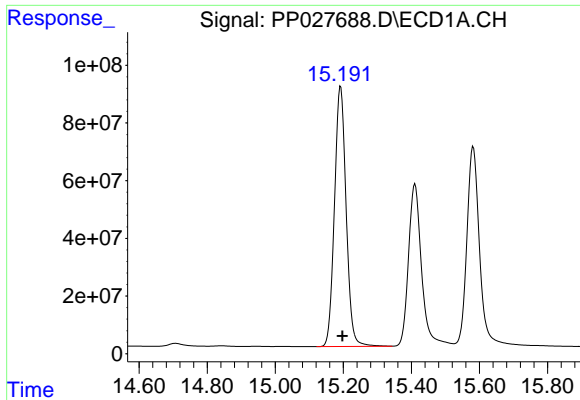
#10 Pentachlorophenol

R.T.: 14.329 min
 Delta R.T.: -0.003 min
 Response: 5919193379
 Conc: 740.84 ng/ml



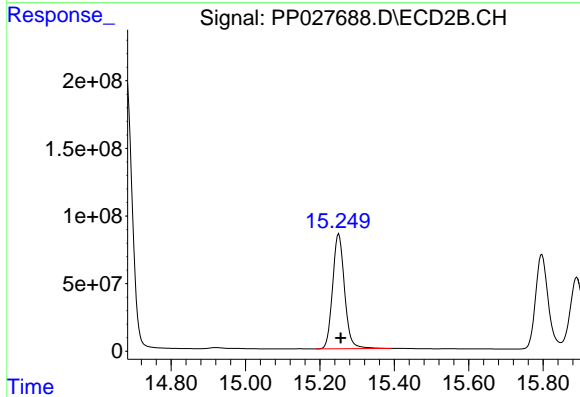
#10 Pentachlorophenol

R.T.: 14.679 min
 Delta R.T.: -0.003 min
 Response: 4858597207
 Conc: 742.25 ng/ml

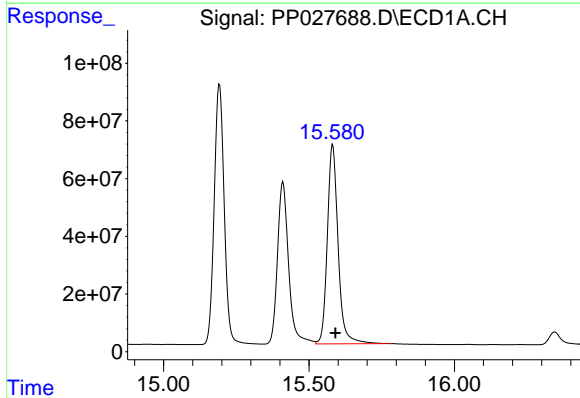


#11 2,4,5-TP (SILVEX)
 R.T.: 15.192 min
 Delta R.T.: -0.005 min
 Response: 2148175924
 Conc: 757.30 ng/ml

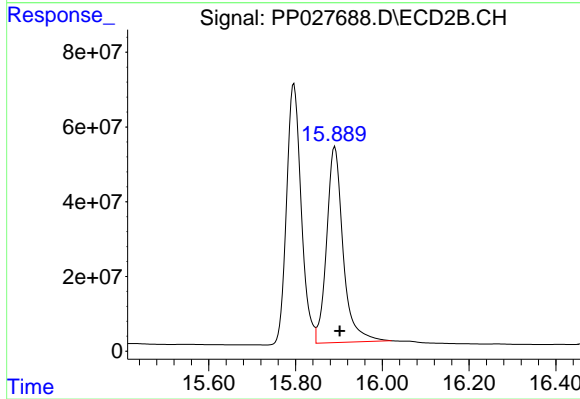
Instrument :
 ECD_P
 ClientSampled :



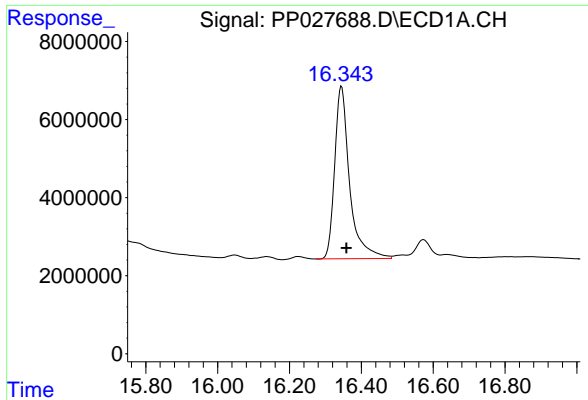
#11 2,4,5-TP (SILVEX)
 R.T.: 15.251 min
 Delta R.T.: -0.005 min
 Response: 1892724199
 Conc: 769.92 ng/ml



#12 2,4,5-T
 R.T.: 15.582 min
 Delta R.T.: -0.009 min
 Response: 1781078717
 Conc: 807.02 ng/ml

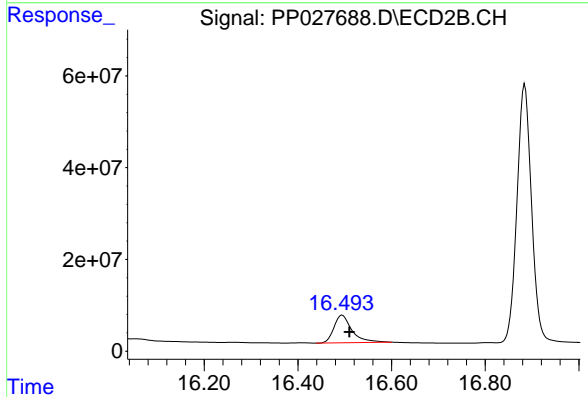


#12 2,4,5-T
 R.T.: 15.891 min
 Delta R.T.: -0.011 min
 Response: 1377053191
 Conc: 838.01 ng/ml

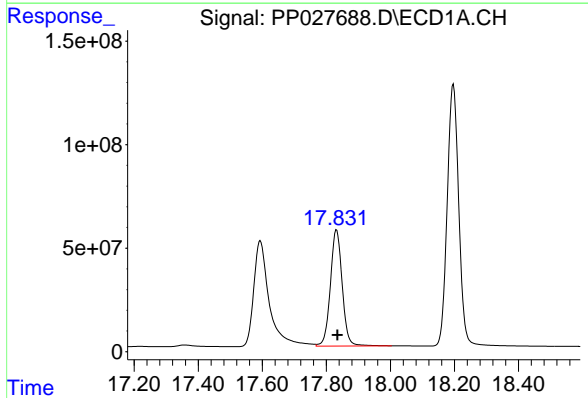


#13 2,4-DB
R.T.: 16.345 min
Delta R.T.: -0.014 min
Response: 127619722
Conc: 803.23 ng/ml

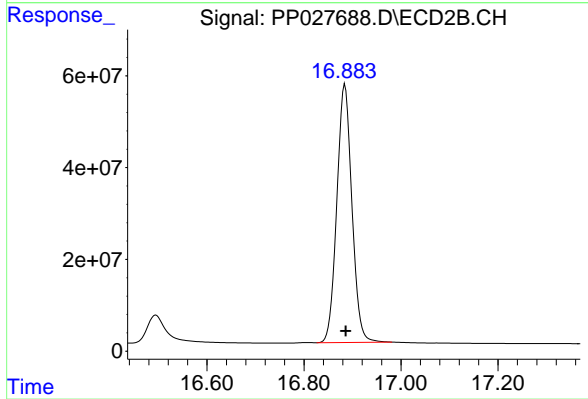
Instrument :
ECD_P
ClientSampled :



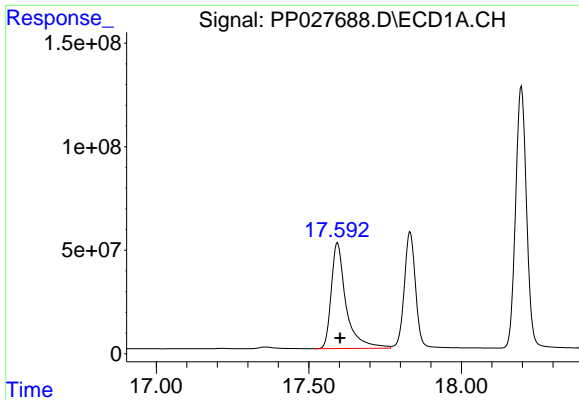
#13 2,4-DB
R.T.: 16.495 min
Delta R.T.: -0.015 min
Response: 160174384
Conc: 801.71 ng/ml



#14 DINOSEB
R.T.: 17.832 min
Delta R.T.: -0.003 min
Response: 1440440691
Conc: 732.53 ng/ml

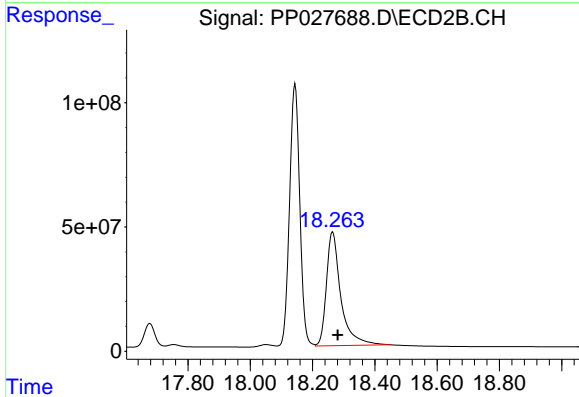


#14 DINOSEB
R.T.: 16.884 min
Delta R.T.: -0.002 min
Response: 1213753500
Conc: 739.35 ng/ml

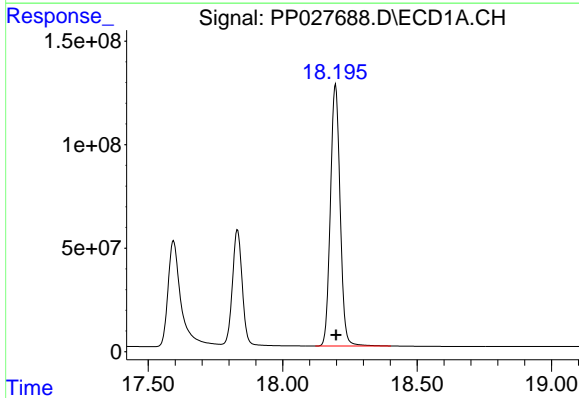


#15 Picloram
 R.T.: 17.594 min
 Delta R.T.: -0.008 min
 Response: 1725448938
 Conc: 740.34 ng/ml

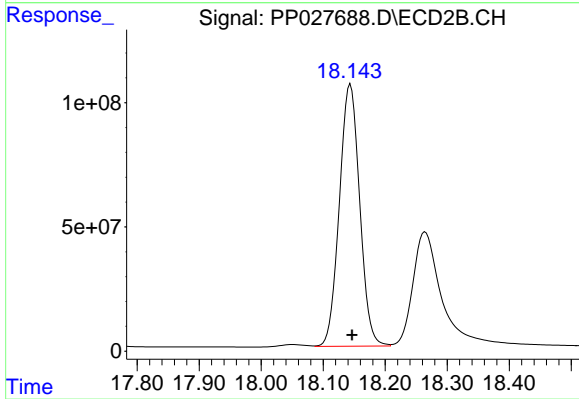
Instrument :
 ECD_P
 ClientSampled :



#15 Picloram
 R.T.: 18.265 min
 Delta R.T.: -0.017 min
 Response: 1469912601
 Conc: 772.23 ng/ml



#16 DCPA
 R.T.: 18.197 min
 Delta R.T.: -0.003 min
 Response: 3162051133
 Conc: 762.42 ng/ml



#16 DCPA
 R.T.: 18.144 min
 Delta R.T.: -0.003 min
 Response: 2400946076
 Conc: 770.97 ng/ml