

Data Path : Z:\pestpcbsrv\HPCHEM1\ECD_P\Data\PP101222\
 Data File : PP052261.D
 Signal(s) : Signal #1: ECD1A.ch Signal #2: ECD2B.ch
 Acq On : 13 Oct 2022 03:34
 Operator : YP\AJ
 Sample : AR1242CCC500
 Misc :
 ALS Vial : 4 Sample Multiplier: 1

Instrument :
 ECD_P
ClientSampleId :
 AR1242CCC500

Integration File signal 1: autoint1.e
 Integration File signal 2: autoint2.e
 Quant Time: Oct 13 05:53:13 2022
 Quant Method : Z:\pestpcbsrv\HPCHEM1\ECD_P\methods\PP101122.M
 Quant Title : GC EXTRACTABLES
 QLast Update : Wed Oct 12 05:20:17 2022
 Response via : Initial Calibration
 Integrator: ChemStation

Volume Inj. : 2 µl
 Signal #1 Phase : ZB-MR1 Signal #2 Phase: ZB-MR2
 Signal #1 Info : 30Mx0.32mmx 0.50µ Signal #2 Info : 30M x 0.32mm x 0.25µm

Compound	RT#1	RT#2	Resp#1	Resp#2	ng/ml	ng/ml

System Monitoring Compounds						
1) SA Tetrachlo...	4.423	3.674	79699891	62203080	50.704	54.295
2) SA Decachlor...	10.237	8.765	68841652	57031340	49.603	51.041
Target Compounds						
16) L4 AR-1242-1	5.596	4.776	16247208	16159411	467.069	464.108
17) L4 AR-1242-2	5.619	4.795	22867968	22776333	461.919	461.696
18) L4 AR-1242-3	5.681	4.974	14928615	12236796	470.825	468.774
19) L4 AR-1242-4	5.780	5.059	12915411	12622846	472.824	464.075
20) L4 AR-1242-5	6.521	5.590	18207684	15884428	489.748	471.347

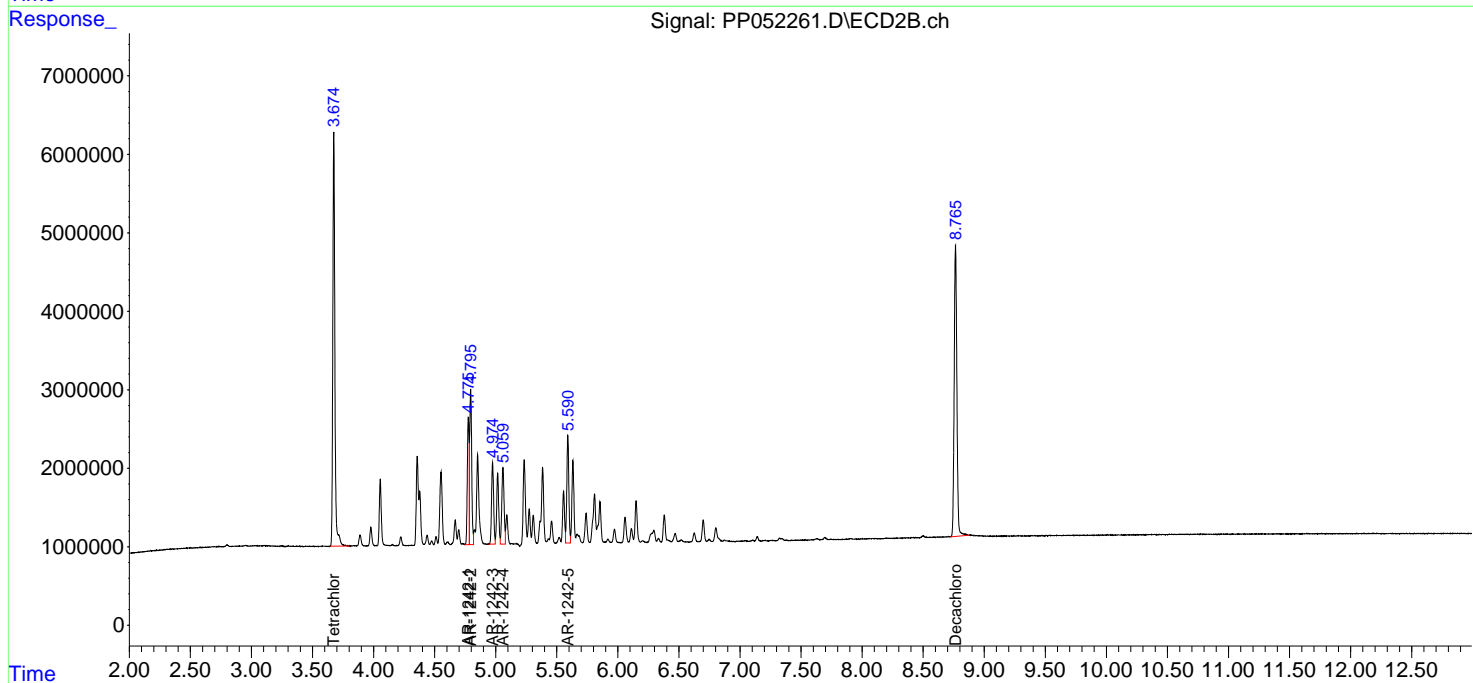
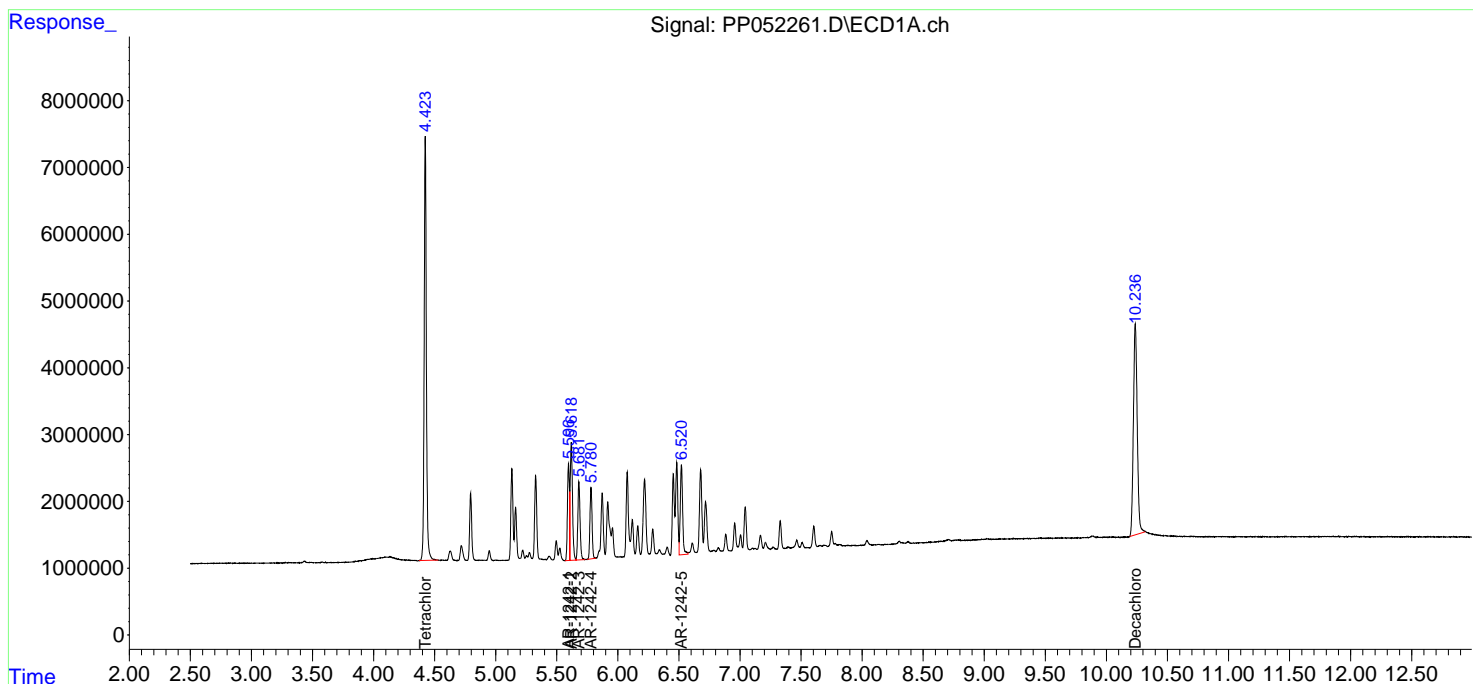
(f)=RT Delta > 1/2 Window (#)=Amounts differ by > 25% (m)=manual int.

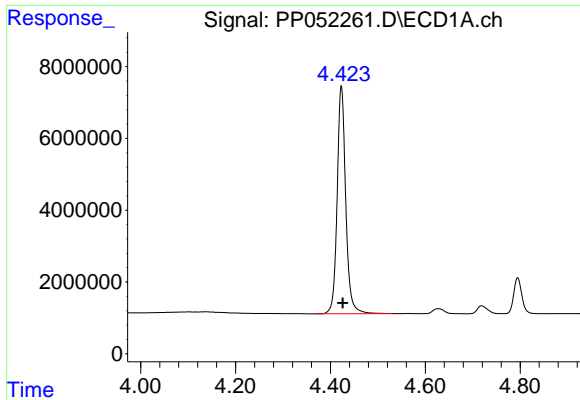
Data Path : Z:\pestpcbsrv\HPCHEM1\ECD_P\Data\PP101222\
 Data File : PP052261.D
 Signal(s) : Signal #1: ECD1A.ch Signal #2: ECD2B.ch
 Acq On : 13 Oct 2022 03:34
 Operator : YP\AJ
 Sample : AR1242CCC500
 Misc :
 ALS Vial : 4 Sample Multiplier: 1

Instrument :
 ECD_P
 ClientSampleId :
 AR1242CCC500

Integration File signal 1: autoint1.e
 Integration File signal 2: autoint2.e
 Quant Time: Oct 13 05:53:13 2022
 Quant Method : Z:\pestpcbsrv\HPCHEM1\ECD_P\methods\PP101122.M
 Quant Title : GC EXTRACTABLES
 QLast Update : Wed Oct 12 05:20:17 2022
 Response via : Initial Calibration
 Integrator: ChemStation

Volume Inj. : 2 µl
 Signal #1 Phase : ZB-MR1 Signal #2 Phase: ZB-MR2
 Signal #1 Info : 30Mx0.32mmx 0.50µ Signal #2 Info : 30M x 0.32mm x 0.25µm

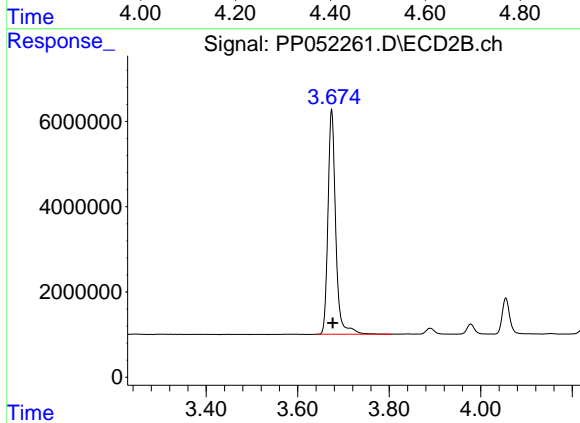




#1 Tetrachloro-m-xylene

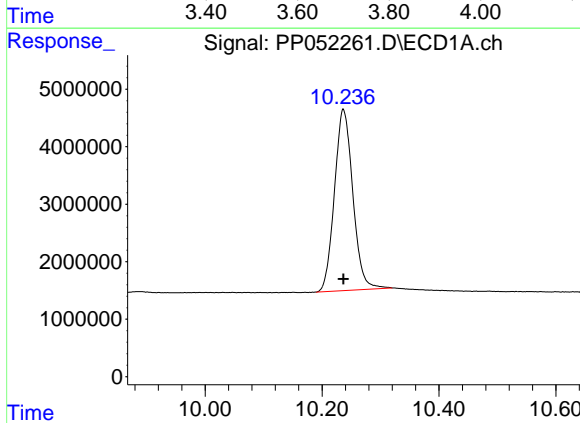
R.T.: 4.423 min
Delta R.T.: -0.003 min
Response: 79699891
Conc: 50.70 ng/ml

Instrument :
ECD_P
ClientSampleId :
AR1242CCC500



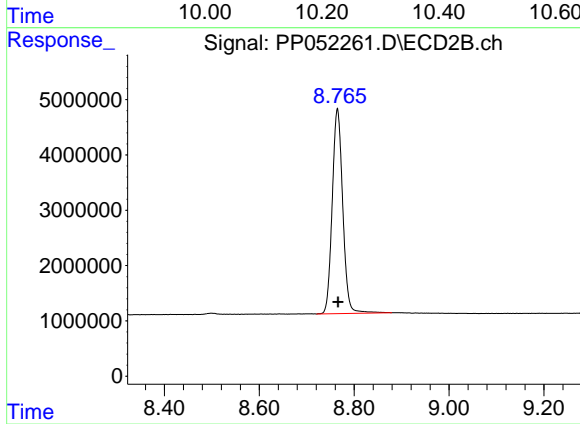
#1 Tetrachloro-m-xylene

R.T.: 3.674 min
Delta R.T.: -0.002 min
Response: 62203080
Conc: 54.30 ng/ml



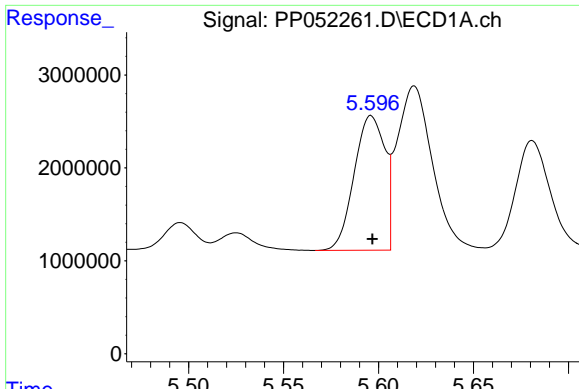
#2 Decachlorobiphenyl

R.T.: 10.237 min
Delta R.T.: 0.000 min
Response: 68841652
Conc: 49.60 ng/ml



#2 Decachlorobiphenyl

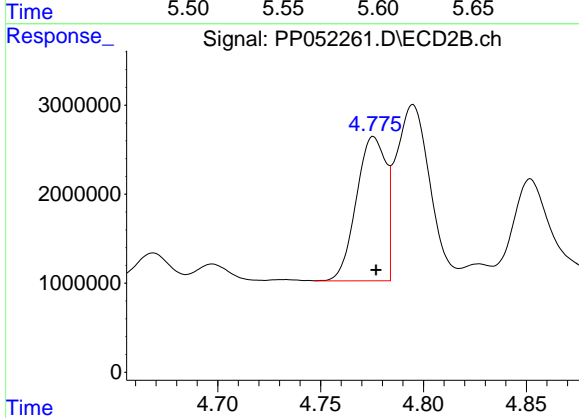
R.T.: 8.765 min
Delta R.T.: -0.001 min
Response: 57031340
Conc: 51.04 ng/ml



#16 AR-1242-1

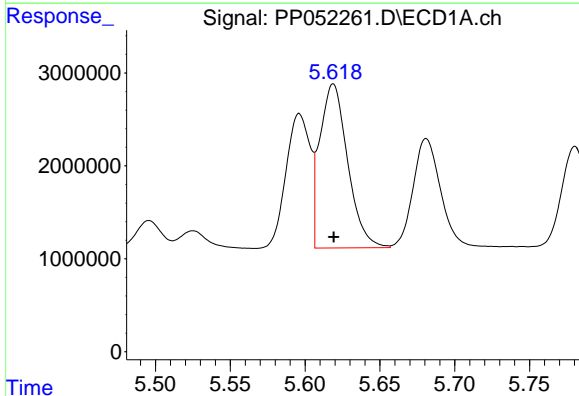
R.T.: 5.596 min
 Delta R.T.: 0.000 min
 Response: 16247208
 Conc: 467.07 ng/ml

Instrument :
 ECD_P
 ClientSampleId :
 AR1242CCC500



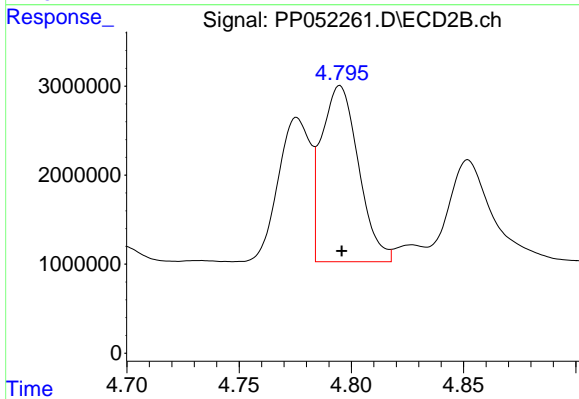
#16 AR-1242-1

R.T.: 4.776 min
 Delta R.T.: -0.001 min
 Response: 16159411
 Conc: 464.11 ng/ml



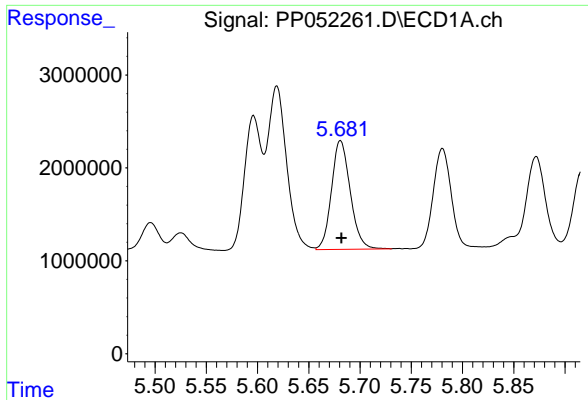
#17 AR-1242-2

R.T.: 5.619 min
 Delta R.T.: 0.000 min
 Response: 22867968
 Conc: 461.92 ng/ml



#17 AR-1242-2

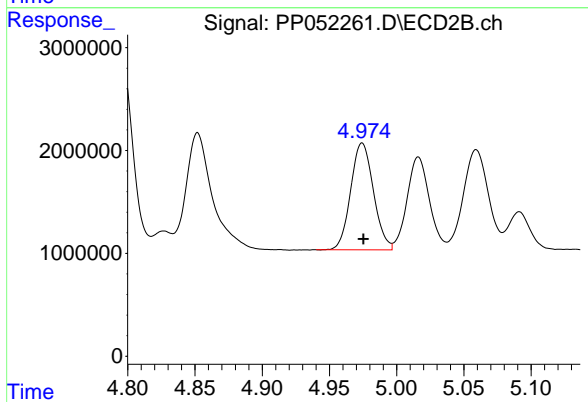
R.T.: 4.795 min
 Delta R.T.: 0.000 min
 Response: 22776333
 Conc: 461.70 ng/ml



#18 AR-1242-3

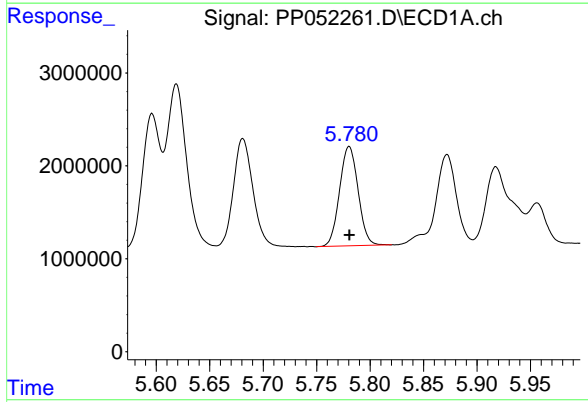
R.T.: 5.681 min
 Delta R.T.: -0.001 min
 Response: 14928615
 Conc: 470.82 ng/ml

Instrument :
 ECD_P
 ClientSampleId :
 AR1242CCC500



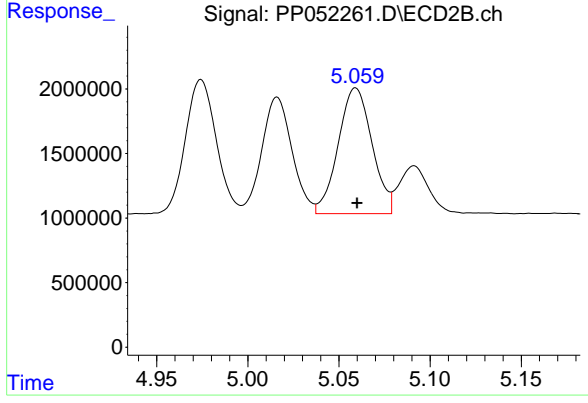
#18 AR-1242-3

R.T.: 4.974 min
 Delta R.T.: -0.001 min
 Response: 12236796
 Conc: 468.77 ng/ml



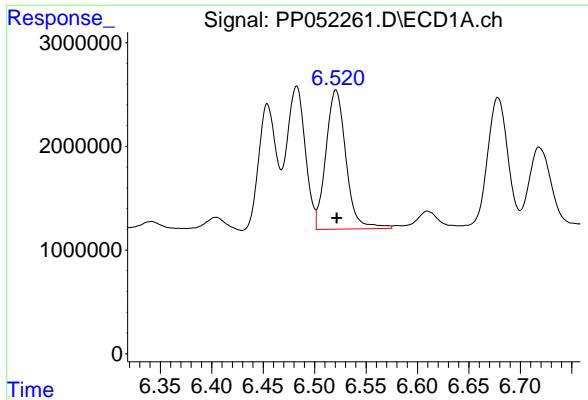
#19 AR-1242-4

R.T.: 5.780 min
 Delta R.T.: 0.000 min
 Response: 12915411
 Conc: 472.82 ng/ml



#19 AR-1242-4

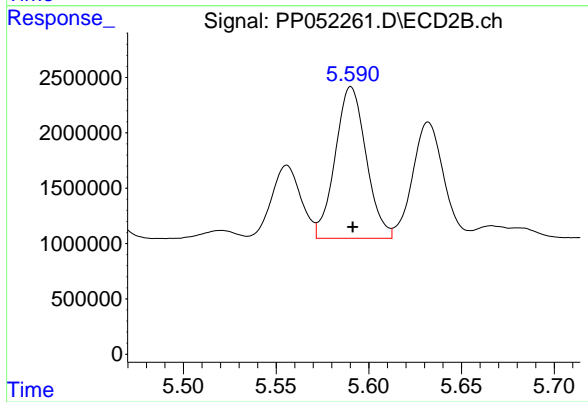
R.T.: 5.059 min
 Delta R.T.: 0.000 min
 Response: 12622846
 Conc: 464.07 ng/ml



#20 AR-1242-5

R.T.: 6.521 min
Delta R.T.: 0.000 min
Response: 18207684
Conc: 489.75 ng/ml

Instrument :
ECD_P
ClientSampleId :
AR1242CCC500



#20 AR-1242-5

R.T.: 5.590 min
Delta R.T.: 0.000 min
Response: 15884428
Conc: 471.35 ng/ml