

Data Path : Z:\pestpcbsrv\HPCHEM1\ECD\_P\Data\PP101222\  
 Data File : PP052264.D  
 Signal(s) : Signal #1: ECD1A.ch Signal #2: ECD2B.ch  
 Acq On : 13 Oct 2022 04:40  
 Operator : YP\AJ  
 Sample : I.BLK  
 Misc :  
 ALS Vial : 2 Sample Multiplier: 1

Instrument :  
 ECD\_P  
 ClientSampleId :  
 I.BLK

Integration File signal 1: autoint1.e  
 Integration File signal 2: autoint2.e  
 Quant Time: Oct 13 05:54:48 2022  
 Quant Method : Z:\pestpcbsrv\HPCHEM1\ECD\_P\methods\PP101122.M  
 Quant Title : GC EXTRACTABLES  
 QLast Update : Wed Oct 12 05:20:17 2022  
 Response via : Initial Calibration  
 Integrator: ChemStation

Volume Inj. : 2 µl  
 Signal #1 Phase : ZB-MR1 Signal #2 Phase: ZB-MR2  
 Signal #1 Info : 30Mx0.32mmx 0.50µ Signal #2 Info : 30M x 0.32mm x 0.25µm

Compound	RT#1	RT#2	Resp#1	Resp#2	ng/ml	ng/ml
-----						
System Monitoring Compounds						
1) SA Tetrachlo...	4.423	3.673	32000837	23345492	20.359	20.378
2) SA Decachlor...	10.238	8.766	31653863	25748484	22.808	23.044

Target Compounds

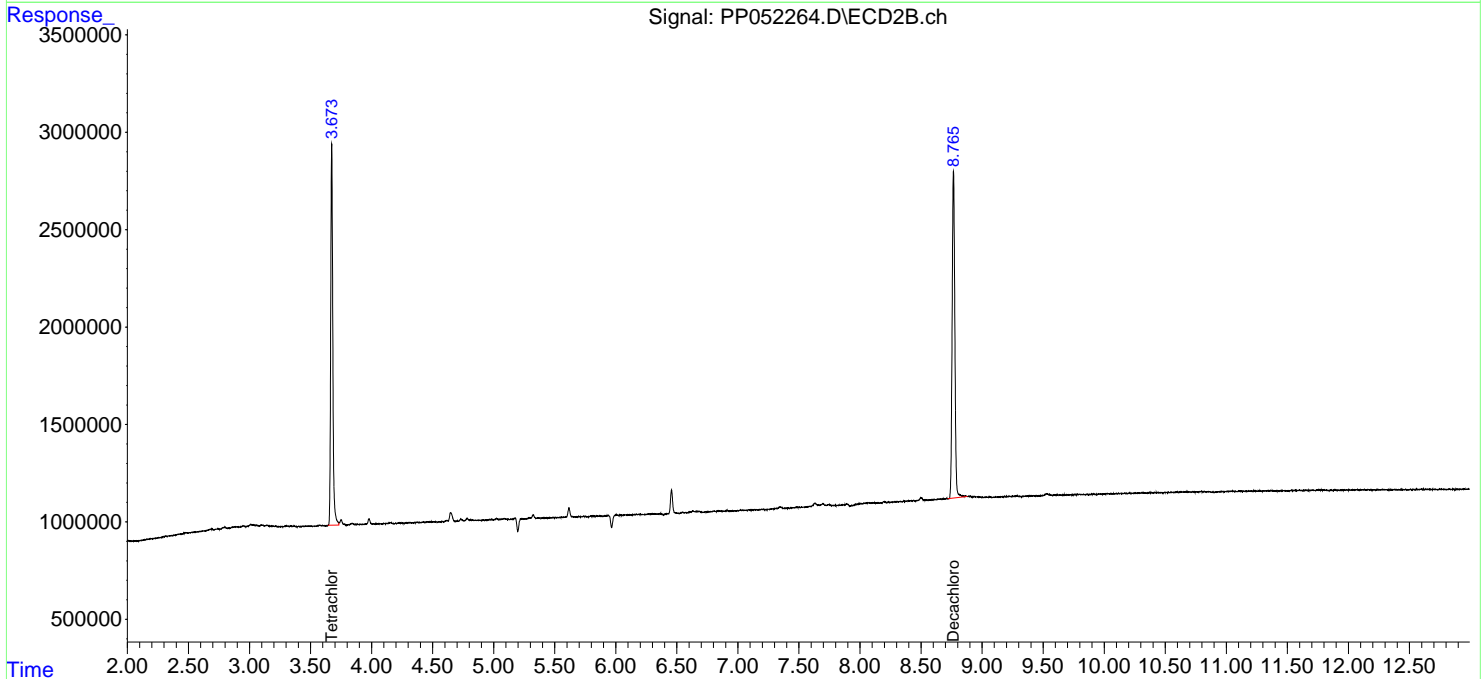
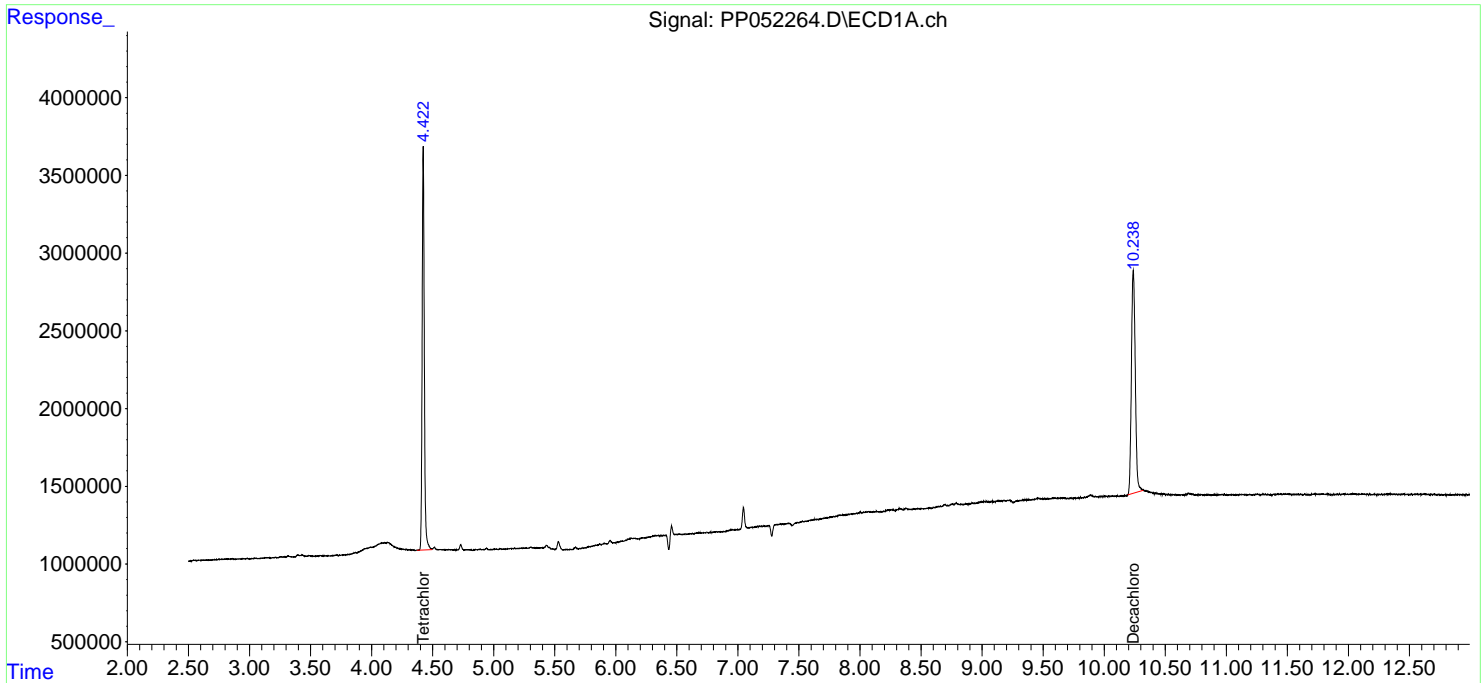
(f)=RT Delta > 1/2 Window (#)=Amounts differ by > 25% (m)=manual int.

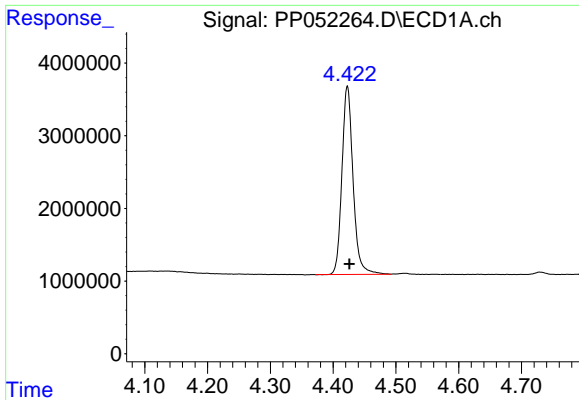
Data Path : Z:\pestpcbsrv\HPCHEM1\ECD\_P\Data\PP101222\  
 Data File : PP052264.D  
 Signal(s) : Signal #1: ECD1A.ch Signal #2: ECD2B.ch  
 Acq On : 13 Oct 2022 04:40  
 Operator : YP\AJ  
 Sample : I.BLK  
 Misc :  
 ALS Vial : 2 Sample Multiplier: 1

Instrument :  
 ECD\_P  
 ClientSampleId :  
 I.BLK

Integration File signal 1: autoint1.e  
 Integration File signal 2: autoint2.e  
 Quant Time: Oct 13 05:54:48 2022  
 Quant Method : Z:\pestpcbsrv\HPCHEM1\ECD\_P\methods\PP101122.M  
 Quant Title : GC EXTRACTABLES  
 QLast Update : Wed Oct 12 05:20:17 2022  
 Response via : Initial Calibration  
 Integrator: ChemStation

Volume Inj. : 2 µl  
 Signal #1 Phase : ZB-MR1 Signal #2 Phase: ZB-MR2  
 Signal #1 Info : 30Mx0.32mmx 0.50µ Signal #2 Info : 30M x 0.32mm x 0.25µm

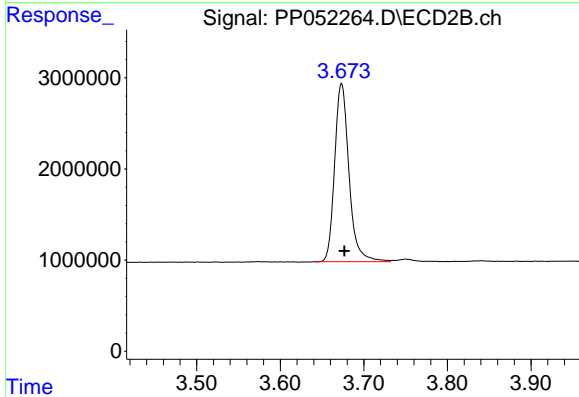




#1 Tetrachloro-m-xylene

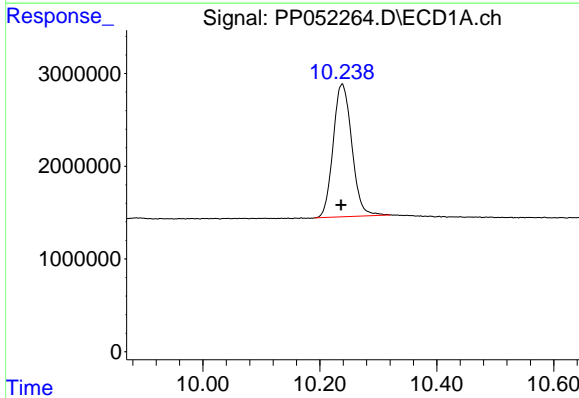
R.T.: 4.423 min  
 Delta R.T.: -0.003 min  
 Response: 32000837  
 Conc: 20.36 ng/ml

Instrument :  
 ECD\_P  
 ClientSampleId :  
 I.BLK



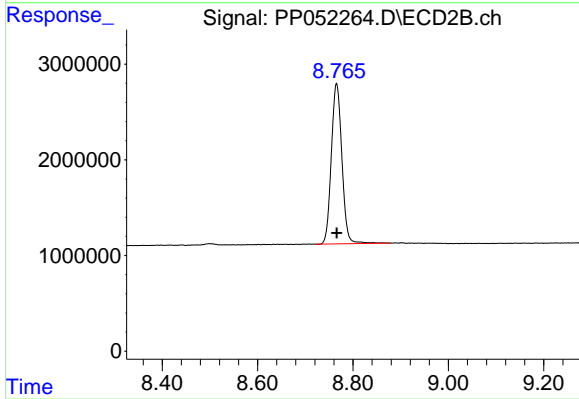
#1 Tetrachloro-m-xylene

R.T.: 3.673 min  
 Delta R.T.: -0.003 min  
 Response: 23345492  
 Conc: 20.38 ng/ml



#2 Decachlorobiphenyl

R.T.: 10.238 min  
 Delta R.T.: 0.002 min  
 Response: 31653863  
 Conc: 22.81 ng/ml



#2 Decachlorobiphenyl

R.T.: 8.766 min  
 Delta R.T.: 0.000 min  
 Response: 25748484  
 Conc: 23.04 ng/ml