

Data Path : Z:\pestpcbsrv\HPCHEM1\ECD_P\Data\PP101222\
 Data File : PP052268.D
 Signal(s) : Signal #1: ECD1A.ch Signal #2: ECD2B.ch
 Acq On : 13 Oct 2022 06:03
 Operator : YP\AJ
 Sample : N5074-02
 Misc :
 ALS Vial : 40 Sample Multiplier: 1

Instrument :
 ECD_P
 ClientSampleId :
 31849

Integration File signal 1: autoint1.e
 Integration File signal 2: autoint2.e
 Quant Time: Oct 13 10:15:29 2022
 Quant Method : Z:\pestpcbsrv\HPCHEM1\ECD_P\methods\PP101122.M
 Quant Title : GC EXTRACTABLES
 QLast Update : Wed Oct 12 05:20:17 2022
 Response via : Initial Calibration
 Integrator: ChemStation

Volume Inj. : 2 µl
 Signal #1 Phase : ZB-MR1 Signal #2 Phase: ZB-MR2
 Signal #1 Info : 30Mx0.32mmx 0.50µ Signal #2 Info : 30M x 0.32mm x 0.25µm

Compound	RT#1	RT#2	Resp#1	Resp#2	ng/ml	ng/ml

System Monitoring Compounds						
1) SA Tetrachlo...	4.422	3.672	33788220	23853940	21.496	20.821
2) SA Decachlor...	10.238	8.765	32810056	23865819	23.641	21.359
Target Compounds						
3) L1 AR-1016-1	5.595	4.775	55909909	54313359	1229.483	1221.183
4) L1 AR-1016-2	5.618	4.795	75637306	69615076	1148.944	1094.023
5) L1 AR-1016-3	5.681	4.974	51597531	41773966	1239.873	1256.727
6) L1 AR-1016-4	5.780	5.016	47285591	25937147	1301.390	951.639 #
7) L1 AR-1016-5	6.077	5.233	42969608	32828621	1006.742	927.908

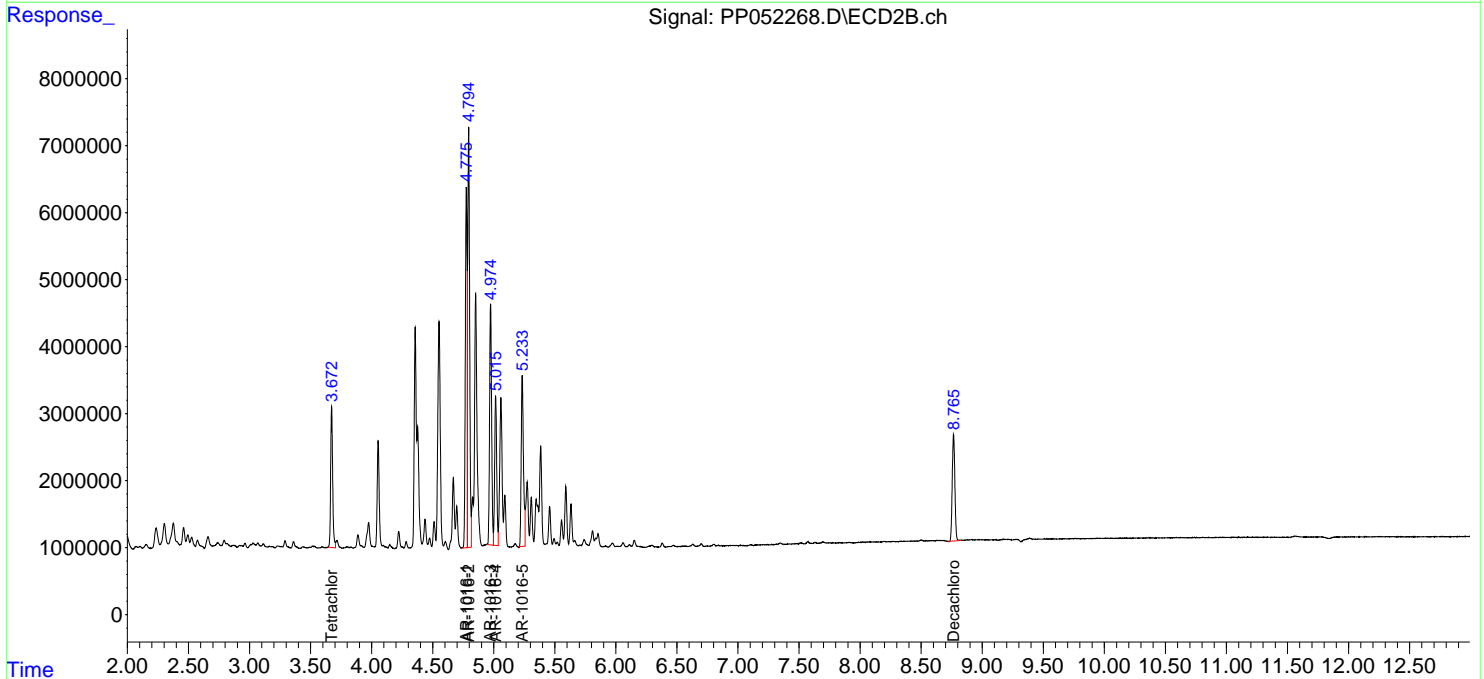
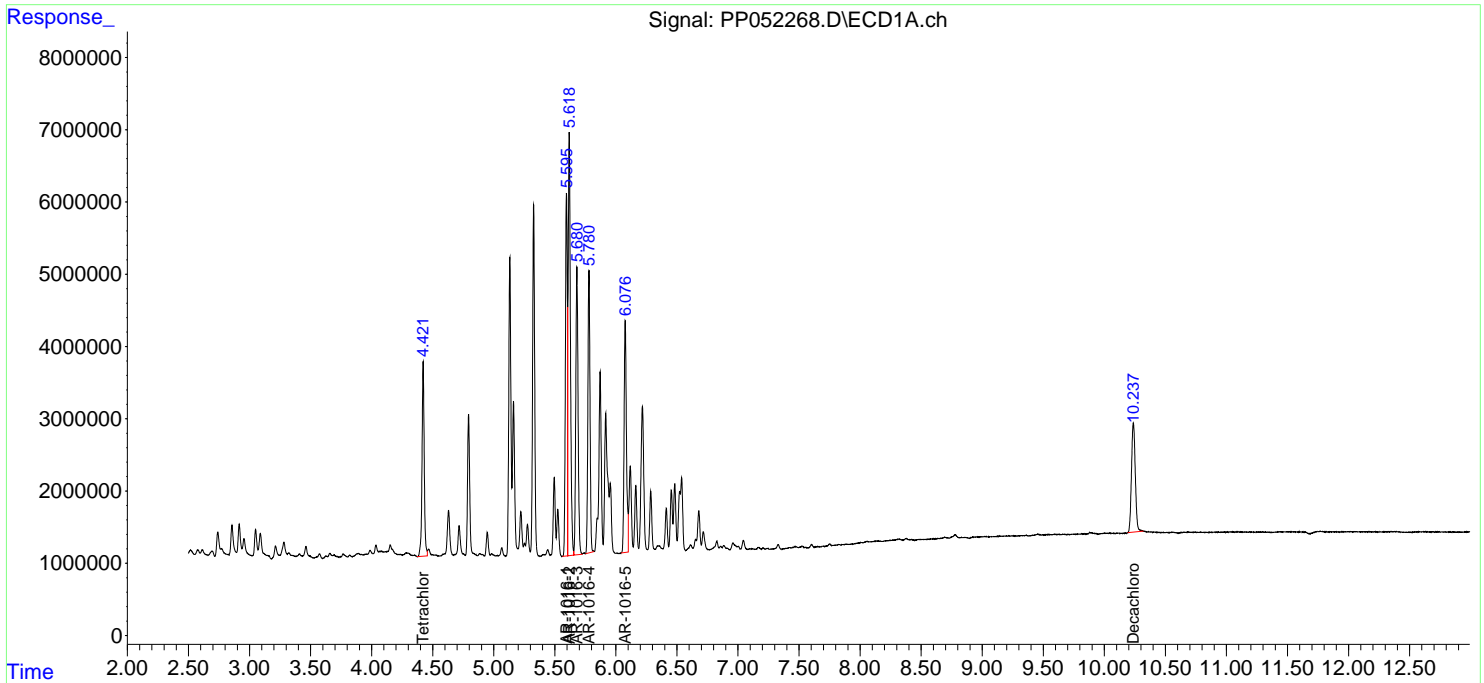
(f)=RT Delta > 1/2 Window (#)=Amounts differ by > 25% (m)=manual int.

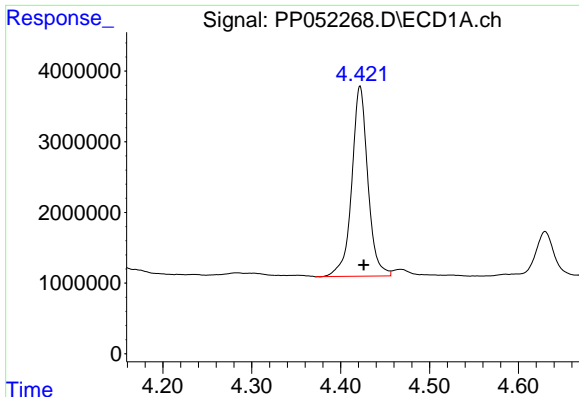
Data Path : Z:\pestpcbsrv\HPCHEM1\ECD_P\Data\PP101222\
 Data File : PP052268.D
 Signal(s) : Signal #1: ECD1A.ch Signal #2: ECD2B.ch
 Acq On : 13 Oct 2022 06:03
 Operator : YP\AJ
 Sample : N5074-02
 Misc :
 ALS Vial : 40 Sample Multiplier: 1

Instrument :
 ECD_P
 ClientSampleId :
 31849

Integration File signal 1: autoint1.e
 Integration File signal 2: autoint2.e
 Quant Time: Oct 13 10:15:29 2022
 Quant Method : Z:\pestpcbsrv\HPCHEM1\ECD_P\methods\PP101122.M
 Quant Title : GC EXTRACTABLES
 QLast Update : Wed Oct 12 05:20:17 2022
 Response via : Initial Calibration
 Integrator: ChemStation

Volume Inj. : 2 µl
 Signal #1 Phase : ZB-MR1 Signal #2 Phase: ZB-MR2
 Signal #1 Info : 30Mx0.32mmx 0.50µ Signal #2 Info : 30M x 0.32mm x 0.25µm

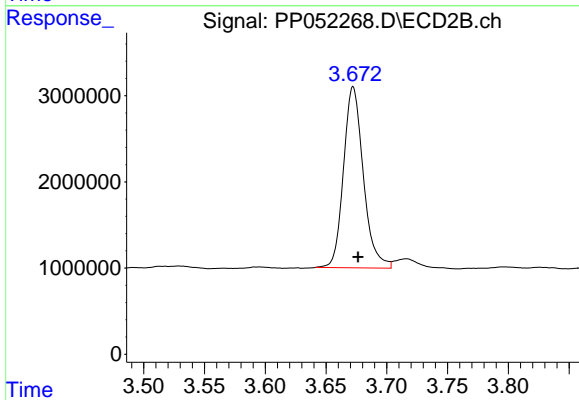




#1 Tetrachloro-m-xylene

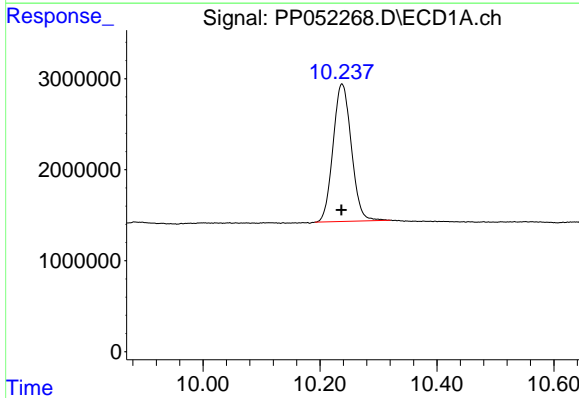
R.T.: 4.422 min
 Delta R.T.: -0.004 min
 Response: 33788220
 Conc: 21.50 ng/ml

Instrument :
 ECD_P
 ClientSampleId :
 31849



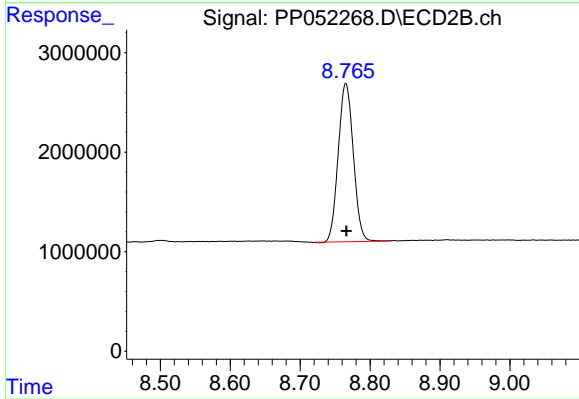
#1 Tetrachloro-m-xylene

R.T.: 3.672 min
 Delta R.T.: -0.004 min
 Response: 23853940
 Conc: 20.82 ng/ml



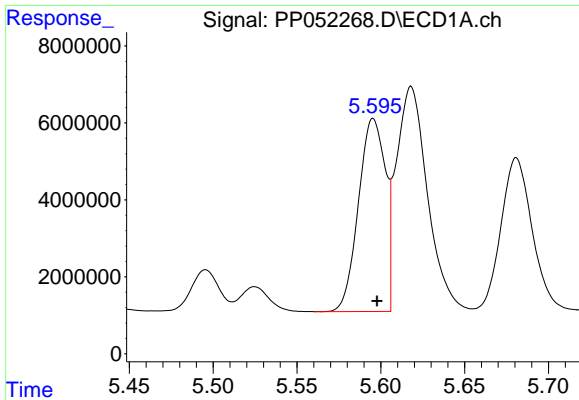
#2 Decachlorobiphenyl

R.T.: 10.238 min
 Delta R.T.: 0.001 min
 Response: 32810056
 Conc: 23.64 ng/ml



#2 Decachlorobiphenyl

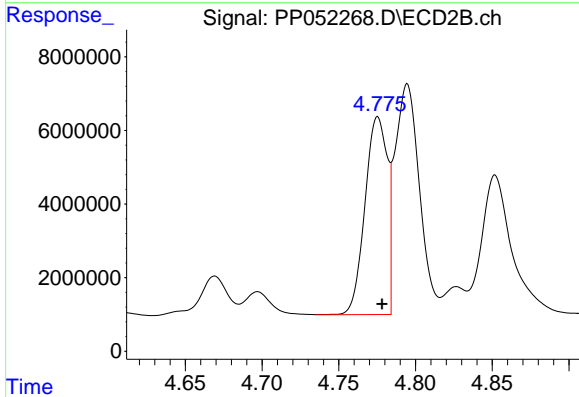
R.T.: 8.765 min
 Delta R.T.: 0.000 min
 Response: 23865819
 Conc: 21.36 ng/ml



#3 AR-1016-1

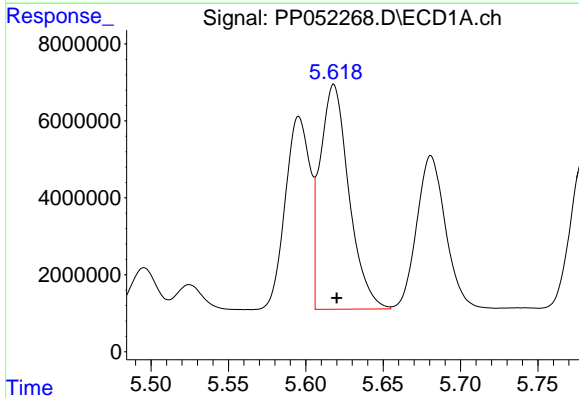
R.T.: 5.595 min
 Delta R.T.: -0.002 min
 Response: 55909909
 Conc: 1229.48 ng/ml

Instrument :
 ECD_P
 ClientSampleId :
 31849



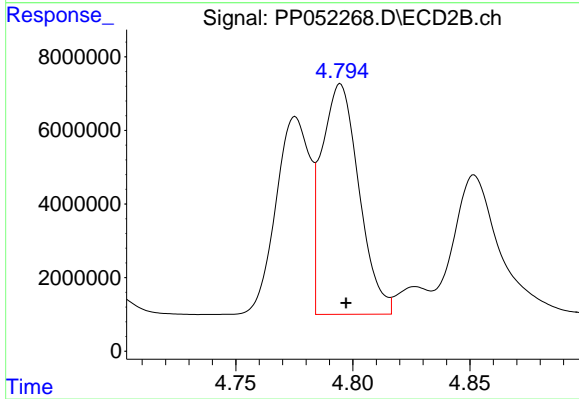
#3 AR-1016-1

R.T.: 4.775 min
 Delta R.T.: -0.003 min
 Response: 54313359
 Conc: 1221.18 ng/ml



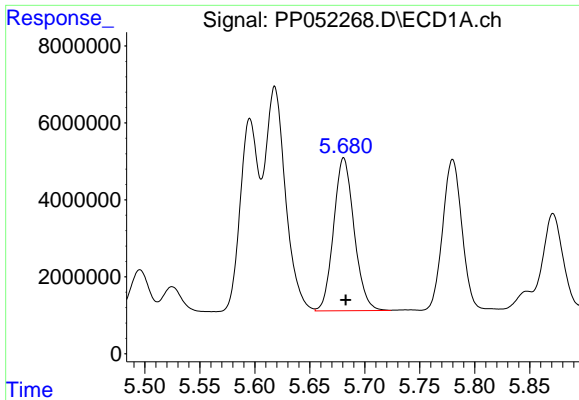
#4 AR-1016-2

R.T.: 5.618 min
 Delta R.T.: -0.002 min
 Response: 75637306
 Conc: 1148.94 ng/ml



#4 AR-1016-2

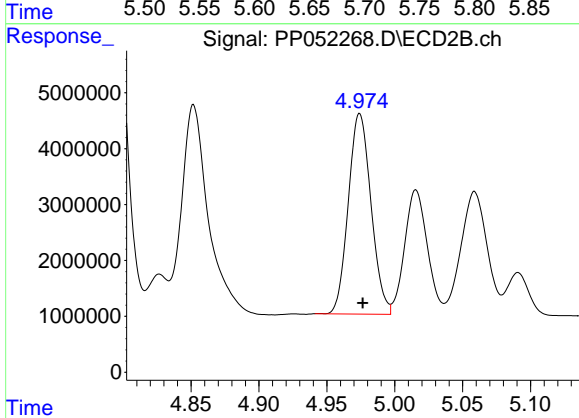
R.T.: 4.795 min
 Delta R.T.: -0.002 min
 Response: 69615076
 Conc: 1094.02 ng/ml



#5 AR-1016-3

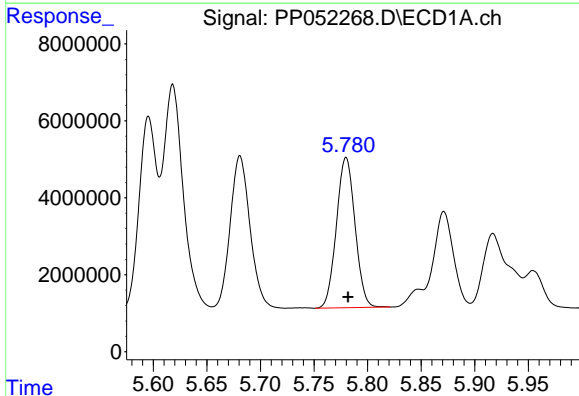
R.T.: 5.681 min
 Delta R.T.: -0.002 min
 Response: 51597531
 Conc: 1239.87 ng/ml

Instrument :
 ECD_P
 ClientSampleId :
 31849



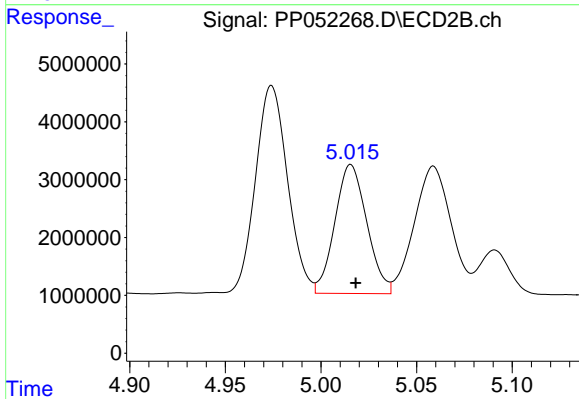
#5 AR-1016-3

R.T.: 4.974 min
 Delta R.T.: -0.002 min
 Response: 41773966
 Conc: 1256.73 ng/ml



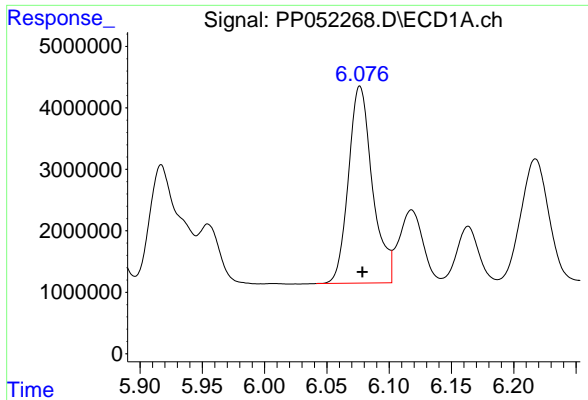
#6 AR-1016-4

R.T.: 5.780 min
 Delta R.T.: -0.002 min
 Response: 47285591
 Conc: 1301.39 ng/ml



#6 AR-1016-4

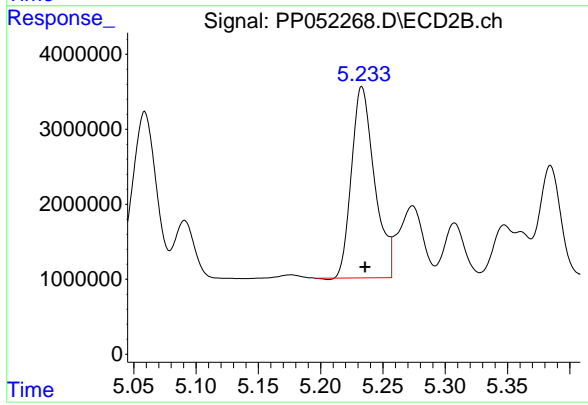
R.T.: 5.016 min
 Delta R.T.: -0.003 min
 Response: 25937147
 Conc: 951.64 ng/ml



#7 AR-1016-5

R.T.: 6.077 min
Delta R.T.: -0.002 min
Response: 42969608
Conc: 1006.74 ng/ml

Instrument :
ECD_P
ClientSampleId :
31849



#7 AR-1016-5

R.T.: 5.233 min
Delta R.T.: -0.002 min
Response: 32828621
Conc: 927.91 ng/ml