

Data Path : Z:\pestpcbsrv\HPCHEM1\ECD_P\Data\PP101222\
 Data File : PP052270.D
 Signal(s) : Signal #1: ECD1A.ch Signal #2: ECD2B.ch
 Acq On : 13 Oct 2022 06:36
 Operator : YP\AJ
 Sample : N5074-04
 Misc :
 ALS Vial : 42 Sample Multiplier: 1

Instrument :
 ECD_P
ClientSampleId :
 31851

Manual Integrations
APPROVED

Reviewed By :Yogesh Patel 10/13/2022
 Supervised By :Ankita Jodhani 10/13/2022

Integration File signal 1: autoint1.e
 Integration File signal 2: autoint2.e
 Quant Time: Oct 13 08:28:08 2022
 Quant Method : Z:\pestpcbsrv\HPCHEM1\ECD_P\methods\PP101122.M
 Quant Title : GC EXTRACTABLES
 QLast Update : Wed Oct 12 05:20:17 2022
 Response via : Initial Calibration
 Integrator: ChemStation

Volume Inj. : 2 µl
 Signal #1 Phase : ZB-MR1 Signal #2 Phase: ZB-MR2
 Signal #1 Info : 30Mx0.32mmx 0.50µ Signal #2 Info : 30M x 0.32mm x 0.25µm

Compound	RT#1	RT#2	Resp#1	Resp#2	ng/ml	ng/ml

System Monitoring Compounds						
1) SA Tetrachlo...	4.423	3.674	28599419	22700871	18.195	19.815
2) SA Decachlor...	10.244	8.767	29119145	22510688	20.982	20.146
Target Compounds						
3) L1 AR-1016-1	5.597	4.776	719871	839692	15.830	18.880
4) L1 AR-1016-2	5.622	4.796	1405747	1070188	21.354	16.818
5) L1 AR-1016-3	5.682	4.978	582673	2175092	14.001	65.435m#
6) L1 AR-1016-4	5.782	5.017	668461	448249	18.397m	16.446
7) L1 AR-1016-5	6.078	5.236	883961	677073	20.710	19.138

(f)=RT Delta > 1/2 Window (#)=Amounts differ by > 25% (m)=manual int.

Data Path : Z:\pestpcbsrv\HPCHEM1\ECD_P\Data\PP101222\
 Data File : PP052270.D
 Signal(s) : Signal #1: ECD1A.ch Signal #2: ECD2B.ch
 Acq On : 13 Oct 2022 06:36
 Operator : YP\AJ
 Sample : N5074-04
 Misc :
 ALS Vial : 42 Sample Multiplier: 1

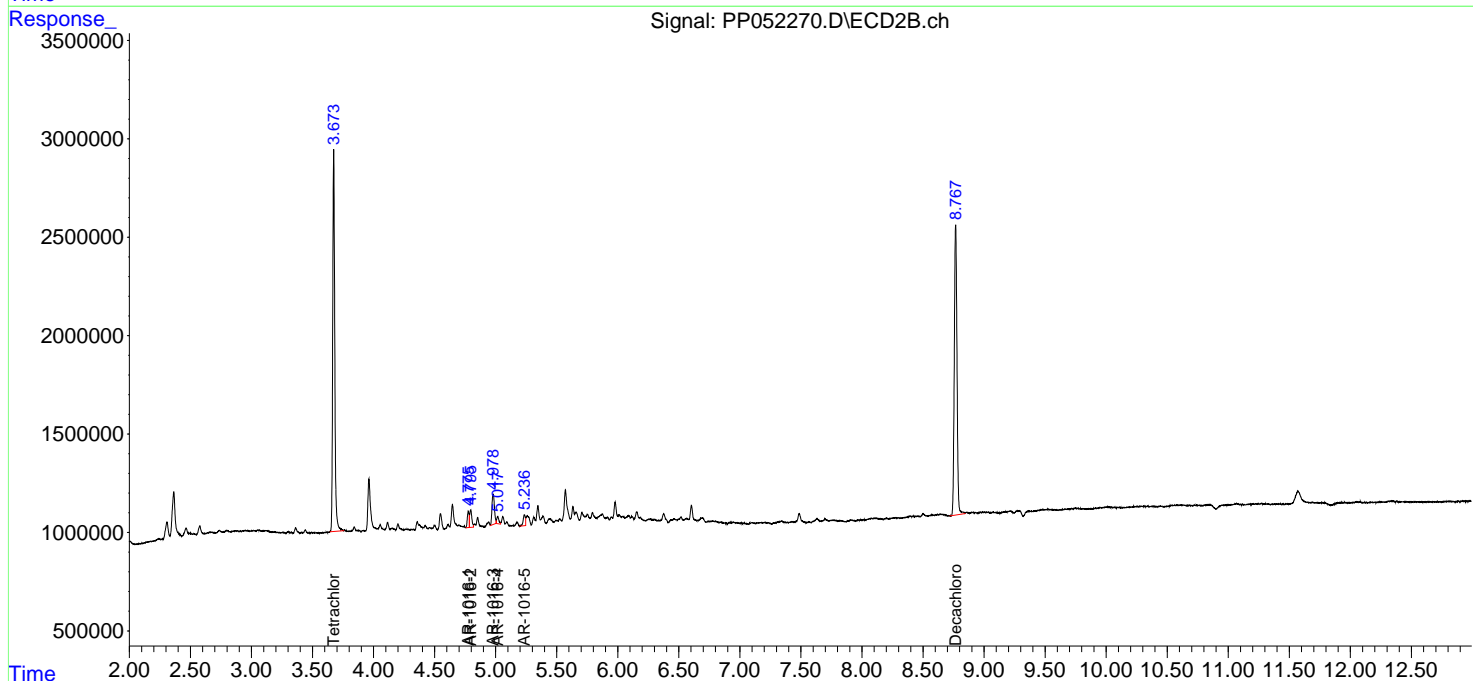
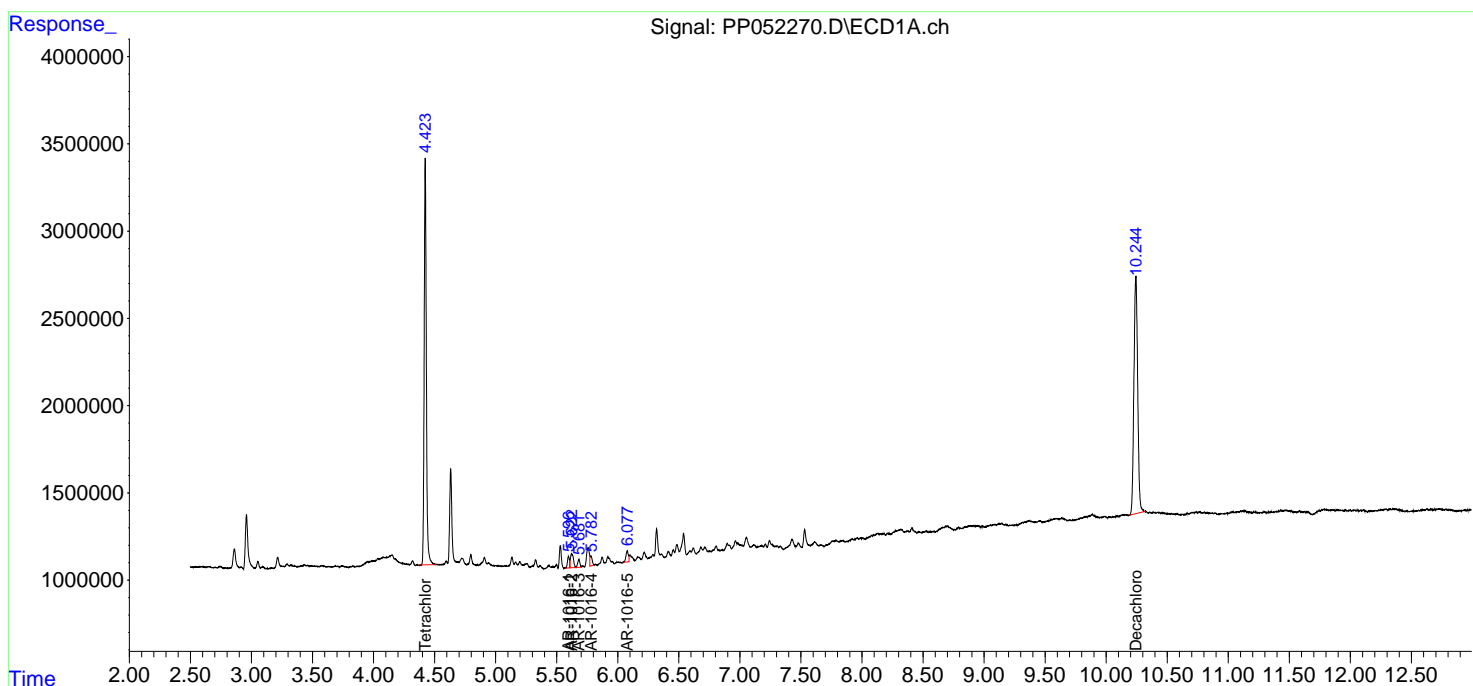
Instrument :
 ECD_P
 ClientSampleId :
 31851

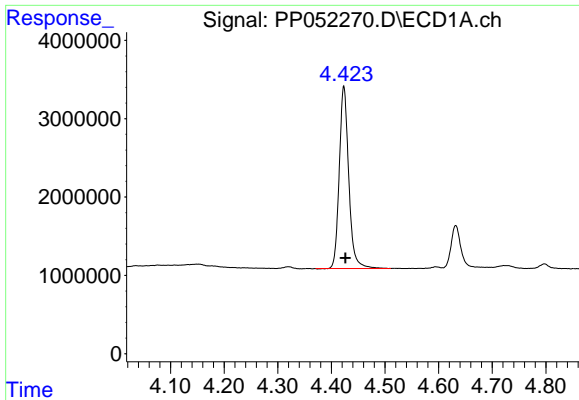
Manual Integrations
 APPROVED

Reviewed By :Yogesh Patel 10/13/2022
 Supervised By :Ankita Jodhani 10/13/2022

Integration File signal 1: autoint1.e
 Integration File signal 2: autoint2.e
 Quant Time: Oct 13 08:28:08 2022
 Quant Method : Z:\pestpcbsrv\HPCHEM1\ECD_P\methods\PP101122.M
 Quant Title : GC EXTRACTABLES
 QLast Update : Wed Oct 12 05:20:17 2022
 Response via : Initial Calibration
 Integrator: ChemStation

Volume Inj. : 2 µl
 Signal #1 Phase : ZB-MR1 Signal #2 Phase: ZB-MR2
 Signal #1 Info : 30Mx0.32mmx 0.50µ Signal #2 Info : 30M x 0.32mm x 0.25µm

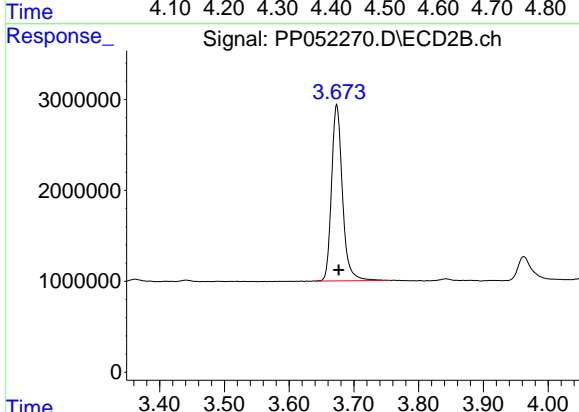




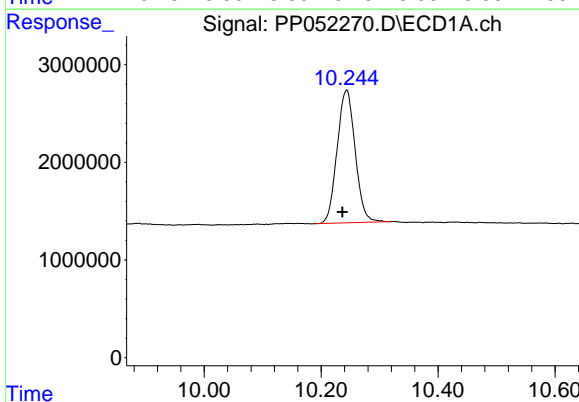
#1 Tetrachloro-m-xylene
 R.T.: 4.423 min
 Delta R.T.: -0.003 min
 Response: 28599419
 Conc: 18.19 ng/ml

Instrument : ECD_P
 ClientSampleId : 31851

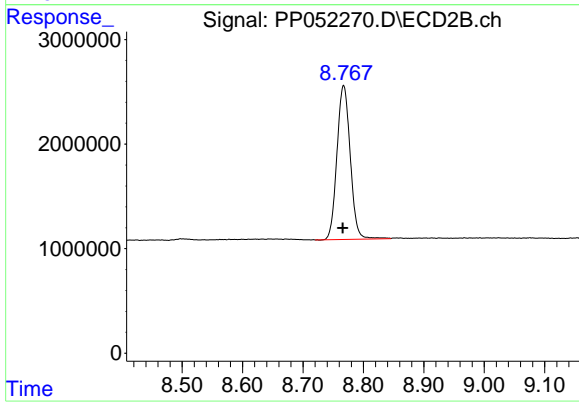
Manual Integrations
APPROVED
 Reviewed By :Yogesh Patel 10/13/2022
 Supervised By :Ankita Jodhani 10/13/2022



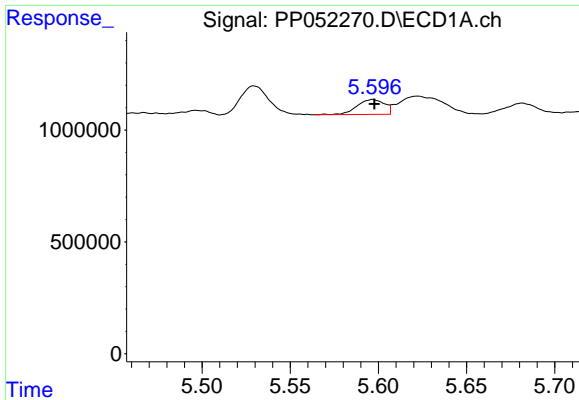
#1 Tetrachloro-m-xylene
 R.T.: 3.674 min
 Delta R.T.: -0.003 min
 Response: 22700871
 Conc: 19.81 ng/ml



#2 Decachlorobiphenyl
 R.T.: 10.244 min
 Delta R.T.: 0.007 min
 Response: 29119145
 Conc: 20.98 ng/ml



#2 Decachlorobiphenyl
 R.T.: 8.767 min
 Delta R.T.: 0.001 min
 Response: 22510688
 Conc: 20.15 ng/ml



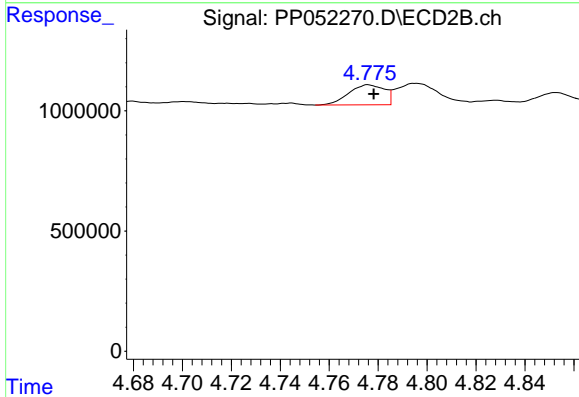
#3 AR-1016-1

R.T.: 5.597 min
 Delta R.T.: 0.000 min
 Response: 719871
 Conc: 15.83 ng/ml

Instrument : ECD_P
 ClientSampleId : 31851

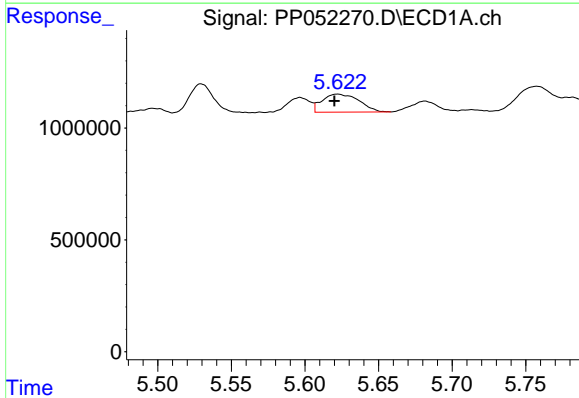
Manual Integrations
 APPROVED

Reviewed By :Yogesh Patel 10/13/2022
 Supervised By :Ankita Jodhani 10/13/2022



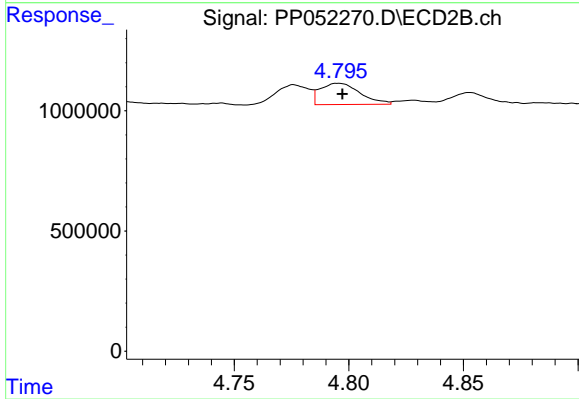
#3 AR-1016-1

R.T.: 4.776 min
 Delta R.T.: -0.002 min
 Response: 839692
 Conc: 18.88 ng/ml



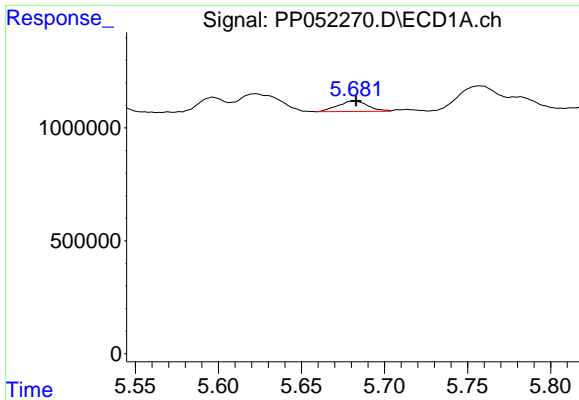
#4 AR-1016-2

R.T.: 5.622 min
 Delta R.T.: 0.002 min
 Response: 1405747
 Conc: 21.35 ng/ml



#4 AR-1016-2

R.T.: 4.796 min
 Delta R.T.: -0.002 min
 Response: 1070188
 Conc: 16.82 ng/ml



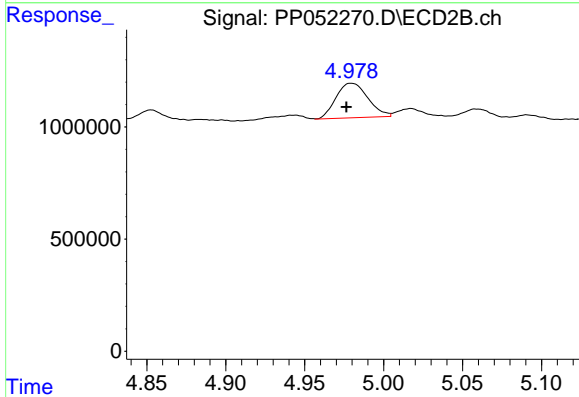
#5 AR-1016-3

R.T.: 5.682 min
 Delta R.T.: -0.001 min
 Response: 582673
 Conc: 14.00 ng/ml

Instrument :
 ECD_P
 ClientSampleId :
 31851

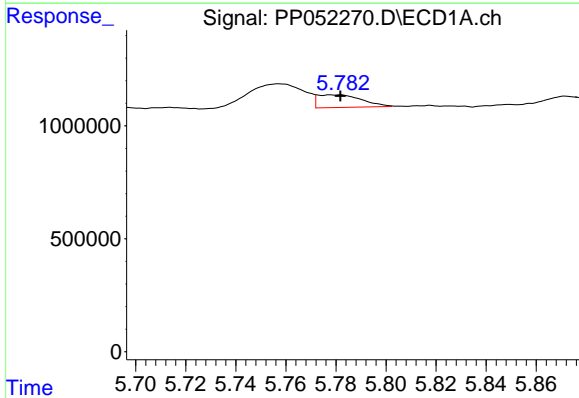
Manual Integrations
 APPROVED

Reviewed By :Yogesh Patel 10/13/2022
 Supervised By :Ankita Jodhani 10/13/2022



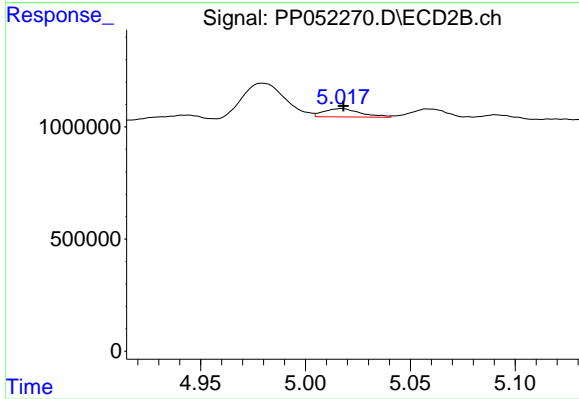
#5 AR-1016-3

R.T.: 4.978 min
 Delta R.T.: 0.002 min
 Response: 2175092
 Conc: 65.44 ng/ml m



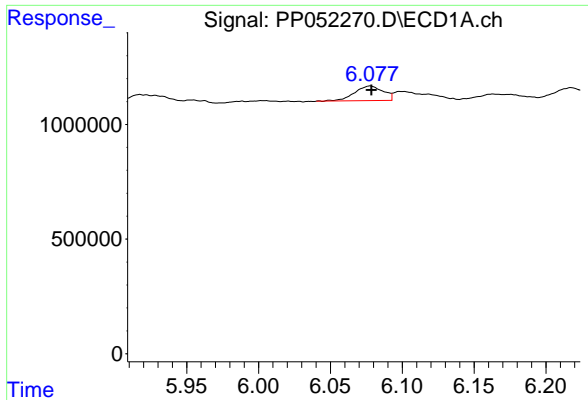
#6 AR-1016-4

R.T.: 5.782 min
 Delta R.T.: 0.000 min
 Response: 668461
 Conc: 18.40 ng/ml m



#6 AR-1016-4

R.T.: 5.017 min
 Delta R.T.: 0.000 min
 Response: 448249
 Conc: 16.45 ng/ml



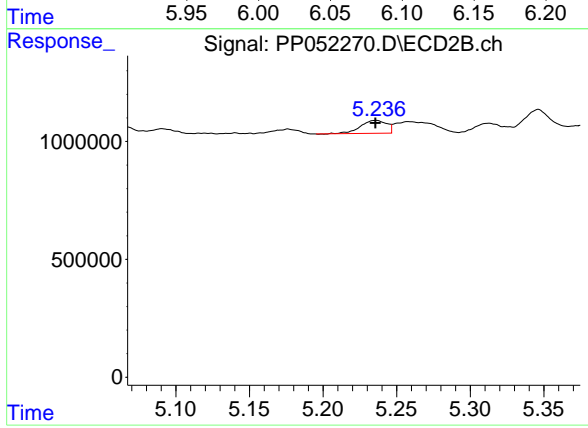
#7 AR-1016-5

R.T.: 6.078 min
 Delta R.T.: 0.000 min
 Response: 883961
 Conc: 20.71 ng/ml

Instrument :
 ECD_P
 ClientSampleId :
 31851

Manual Integrations
 APPROVED

Reviewed By :Yogesh Patel 10/13/2022
 Supervised By :Ankita Jodhani 10/13/2022



#7 AR-1016-5

R.T.: 5.236 min
 Delta R.T.: 0.000 min
 Response: 677073
 Conc: 19.14 ng/ml