

Data Path : Z:\pestpcbsrv\HPCHEM1\ECD_P\Data\PP101321\
 Data File : PP040017.D
 Signal(s) : Signal #1: ECD1A.CH Signal #2: ECD2B.CH
 Acq On : 13 Oct 2021 12:00
 Operator : AJ\MA
 Sample : N4171-02 10X
 Misc :
 ALS Vial : 10 Sample Multiplier: 1

Instrument :
 ECD_P
 ClientSampleId :

Integration File signal 1: autoint1.e
 Integration File signal 2: autoint2.e
 Quant Time: Oct 14 02:26:01 2021
 Quant Method : Z:\pestpcbsrv\HPCHEM1\ECD_P\methods\PP101221.M
 Quant Title : GC EXTRACTABLES
 QLast Update : Wed Oct 13 08:03:59 2021
 Response via : Initial Calibration
 Integrator: ChemStation 6890 Scale Mode: Small noise peaks clipped

Volume Inj. : 2 µl
 Signal #1 Phase : ZB-MR2 Signal #2 Phase: ZB-MR2
 Signal #1 Info : 30Mx0.32mmx 0.50µ Signal #2 Info : 30M x 0.32mm x 0.25µm

Compound	RT#1	RT#2	Resp#1	Resp#2	ng/ml	ng/ml

System Monitoring Compounds						
1) SA Tetrachlo...	4.893	3.982	53303	33244	1.755	1.966
2) SA Decachlor...	0.000	9.312	0	55135	N.D.	2.598 #
Target Compounds						
3) L1 AR-1016-1	6.196f	0.000	163357	0	165.439	N.D. #
7) L1 AR-1016-5	6.712f	0.000	4069	0	6.361	N.D. #
9) L2 AR-1221-2	5.237	0.000	42741	0	191.841	N.D. #
10) L2 AR-1221-3	0.000	4.422	0	11551	N.D.	21.329 #
11) L3 AR-1232-1	0.000	4.422	0	11551	N.D.	28.439 #
12) L3 AR-1232-2	5.942f	0.000	157334	0	458.407	N.D. #
16) L4 AR-1242-1	6.196f	0.000	163357	0	208.049	N.D. #
21) L5 AR-1248-1	6.196f	0.000	163357	0	264.803	N.D. #
23) L5 AR-1248-3	6.712f	0.000	4069	0	4.537	N.D. #
31) L7 AR-1260-1	0.000	6.856	0	25787	N.D.	25.745 #
32) L7 AR-1260-2	8.191f	7.019f	51471	10350	37.659	8.741 #
33) L7 AR-1260-3	0.000	7.194	0	18679	N.D.	15.810 #
35) L7 AR-1260-5	0.000	7.932	0	65568	N.D.	32.083 #
37) L8 AR-1262-2	0.000	7.932	0	65568	N.D.	29.136 #
38) L8 AR-1262-3	0.000	8.190f	0	44212	N.D.	45.397 #
39) L8 AR-1262-4	0.000	8.263f	0	58655	N.D.	33.086 #
41) L9 AR-1268-1	0.000	8.190f	0	44212	N.D.	16.385 #
42) L9 AR-1268-2	0.000	8.263f	0	58655	N.D.	23.427 #
43) L9 AR-1268-3	0.000	8.516f	0	36457	N.D.	16.649 #
45) L9 AR-1268-5	10.599f	0.000	120519	0	14.012	N.D. #

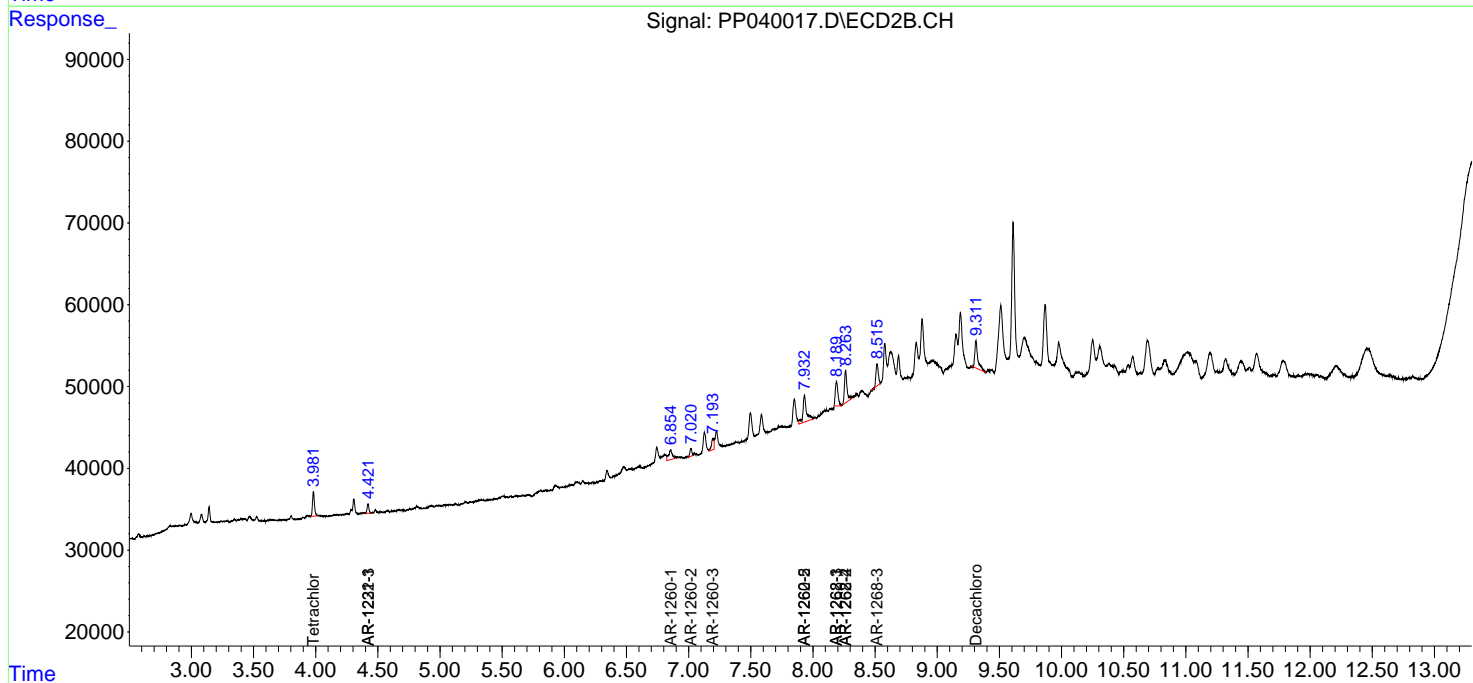
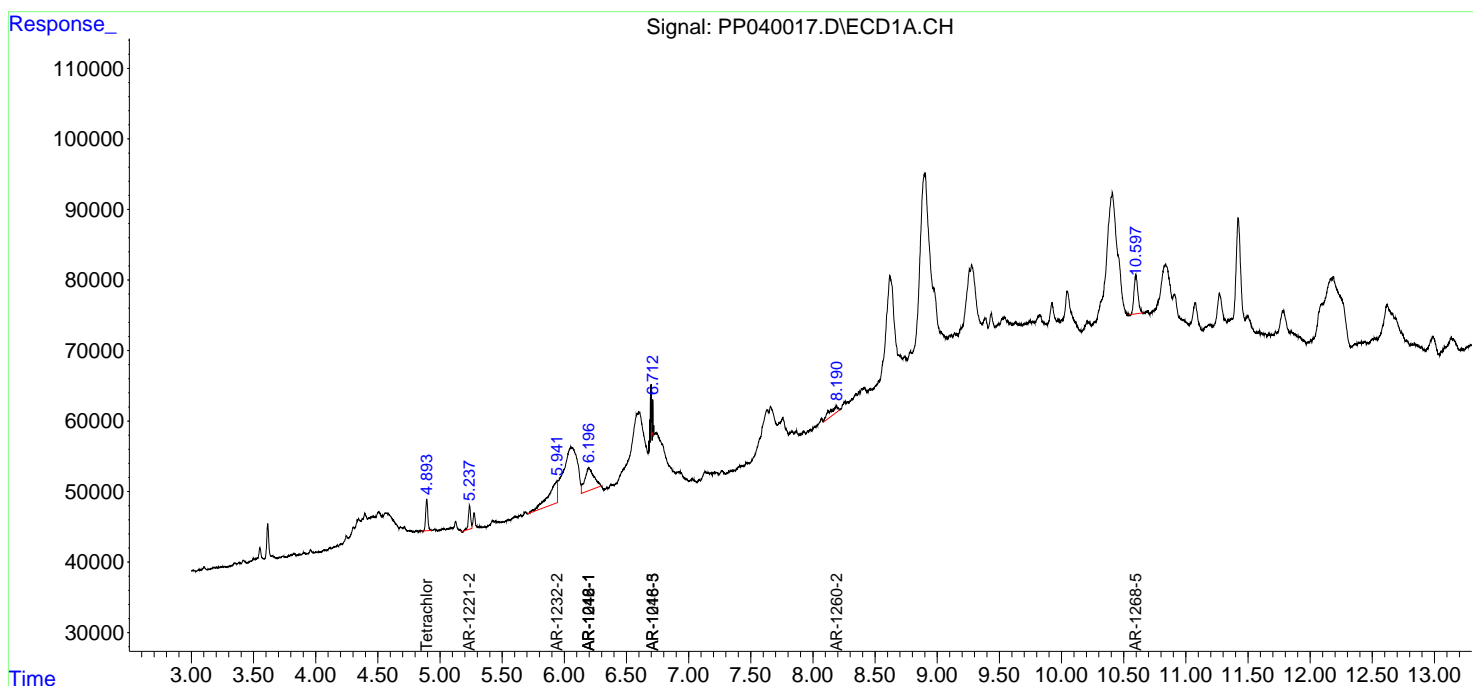
(f)=RT Delta > 1/2 Window (#)=Amounts differ by > 25% (m)=manual int.

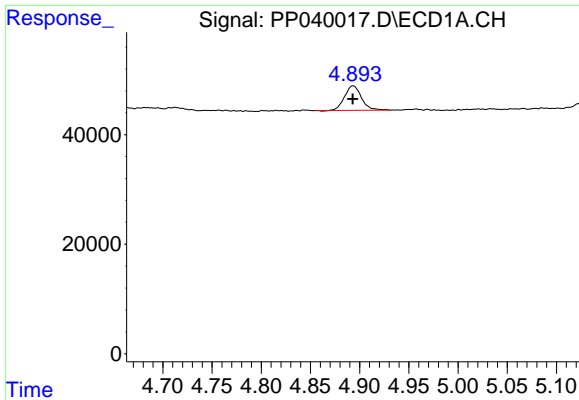
Data Path : Z:\pestpcbsrv\HPCHEM1\ECD_P\Data\PP101321\
 Data File : PP040017.D
 Signal(s) : Signal #1: ECD1A.CH Signal #2: ECD2B.CH
 Acq On : 13 Oct 2021 12:00
 Operator : AJ\MA
 Sample : N4171-02 10X
 Misc :
 ALS Vial : 10 Sample Multiplier: 1

Instrument :
 ECD_P
 ClientSampled :

Integration File signal 1: autoint1.e
 Integration File signal 2: autoint2.e
 Quant Time: Oct 14 02:26:01 2021
 Quant Method : Z:\pestpcbsrv\HPCHEM1\ECD_P\methods\PP101221.M
 Quant Title : GC EXTRACTABLES
 QLast Update : Wed Oct 13 08:03:59 2021
 Response via : Initial Calibration
 Integrator: ChemStation 6890 Scale Mode: Small noise peaks clipped

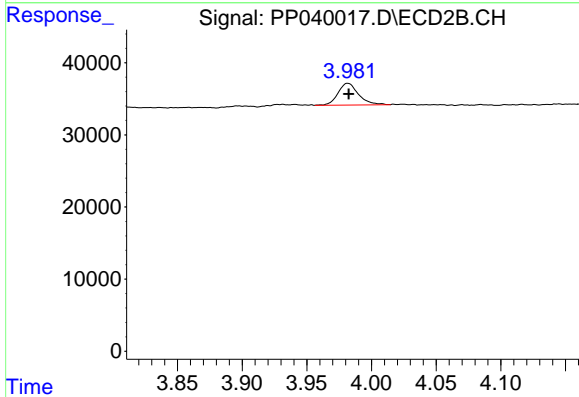
Volume Inj. : 2 µl
 Signal #1 Phase : ZB-MR1 Signal #2 Phase: ZB-MR2
 Signal #1 Info : 30Mx0.32mmx 0.50µ Signal #2 Info : 30M x 0.32mm x 0.25µm



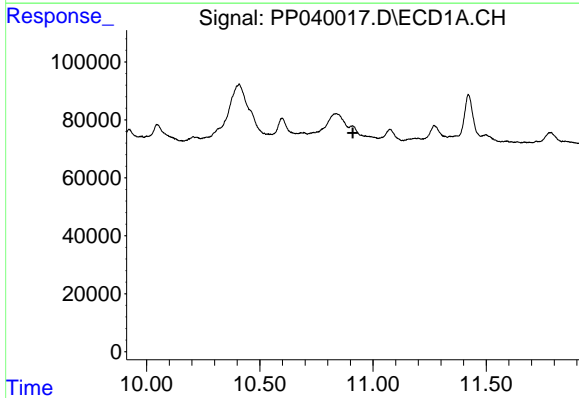


#1 Tetrachloro-m-xylene
 R.T.: 4.893 min
 Delta R.T.: 0.000 min
 Response: 53303
 Conc: 1.76 ng/ml

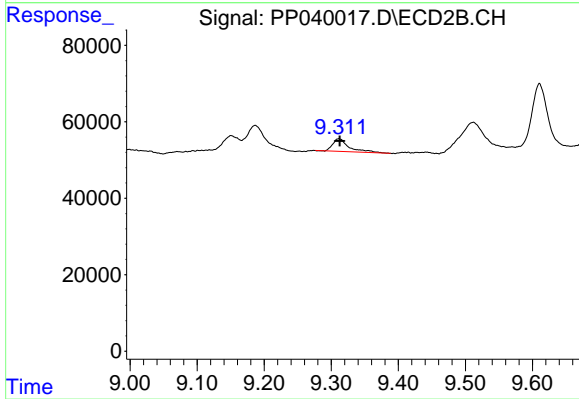
Instrument :
 ECD_P
 ClientSampleId :



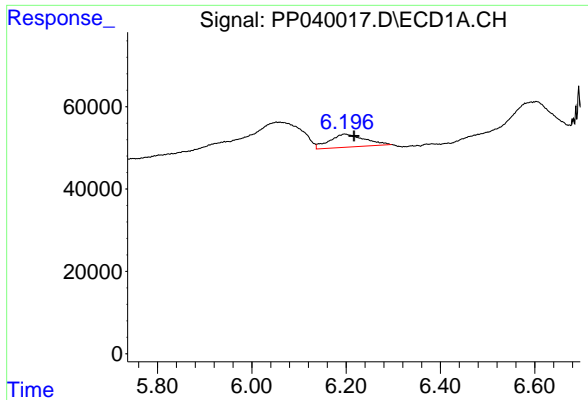
#1 Tetrachloro-m-xylene
 R.T.: 3.982 min
 Delta R.T.: 0.000 min
 Response: 33244
 Conc: 1.97 ng/ml



#2 Decachlorobiphenyl
 R.T.: 0.000 min
 Exp R.T. : 10.911 min
 Response: 0
 Conc: N.D.

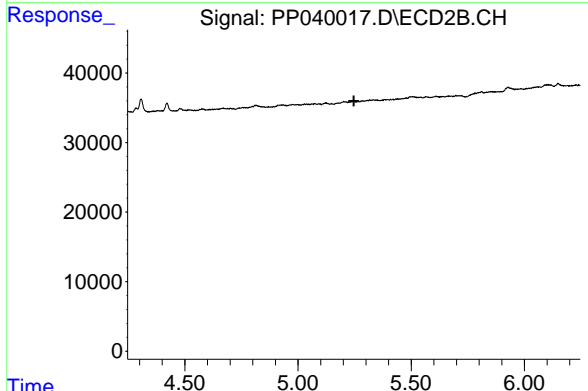


#2 Decachlorobiphenyl
 R.T.: 9.312 min
 Delta R.T.: -0.001 min
 Response: 55135
 Conc: 2.60 ng/ml

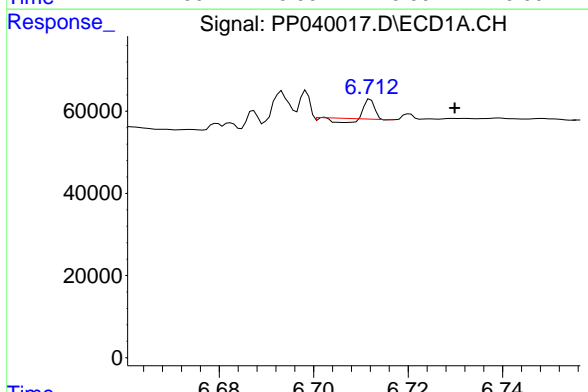


#3 AR-1016-1
 R.T.: 6.196 min
 Delta R.T.: -0.021 min
 Response: 163357
 Conc: 165.44 ng/ml

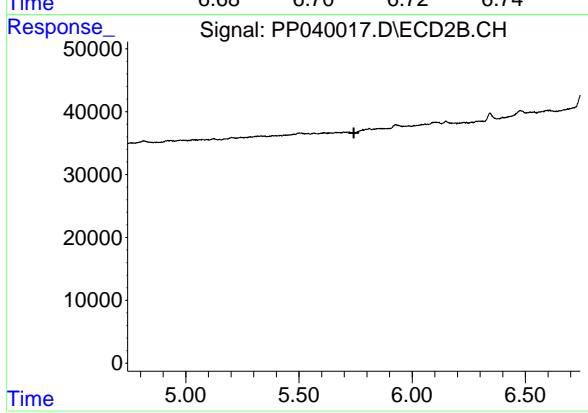
Instrument :
 ECD_P
 ClientSampled :



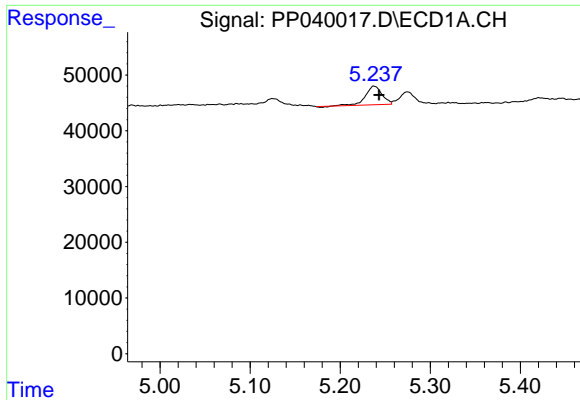
#3 AR-1016-1
 R.T.: 0.000 min
 Exp R.T. : 5.247 min
 Response: 0
 Conc: N.D.



#7 AR-1016-5
 R.T.: 6.712 min
 Delta R.T.: -0.018 min
 Response: 4069
 Conc: 6.36 ng/ml

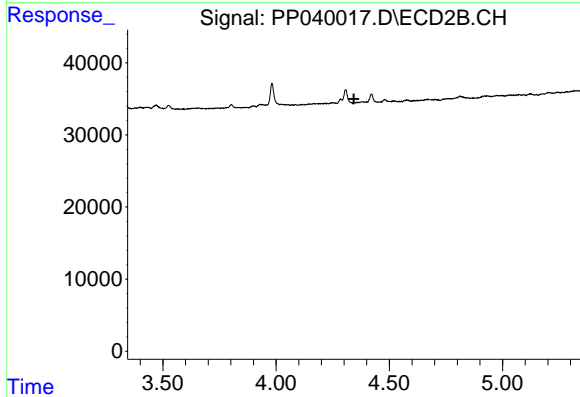


#7 AR-1016-5
 R.T.: 0.000 min
 Exp R.T. : 5.743 min
 Response: 0
 Conc: N.D.

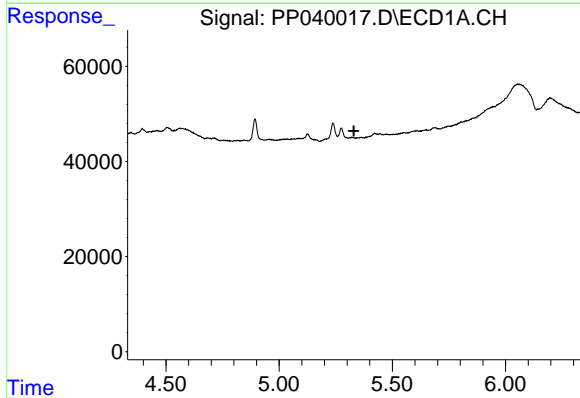


#9 AR-1221-2
 R.T.: 5.237 min
 Delta R.T.: -0.006 min
 Response: 42741
 Conc: 191.84 ng/ml

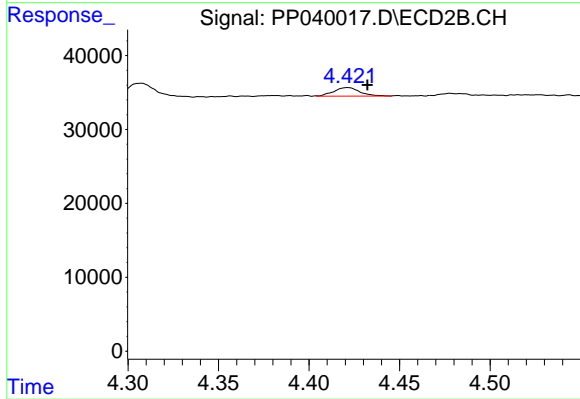
Instrument :
 ECD_P
 ClientSampled :



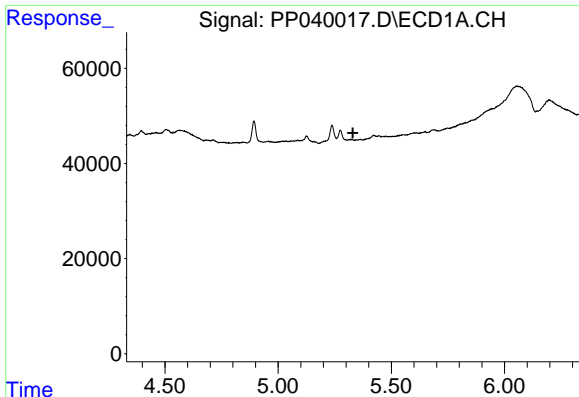
#9 AR-1221-2
 R.T.: 0.000 min
 Exp R.T. : 4.343 min
 Response: 0
 Conc: N.D.



#10 AR-1221-3
 R.T.: 0.000 min
 Exp R.T. : 5.331 min
 Response: 0
 Conc: N.D.



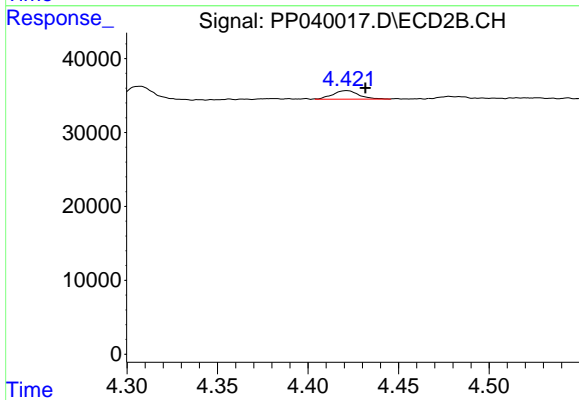
#10 AR-1221-3
 R.T.: 4.422 min
 Delta R.T.: -0.011 min
 Response: 11551
 Conc: 21.33 ng/ml



#11 AR-1232-1

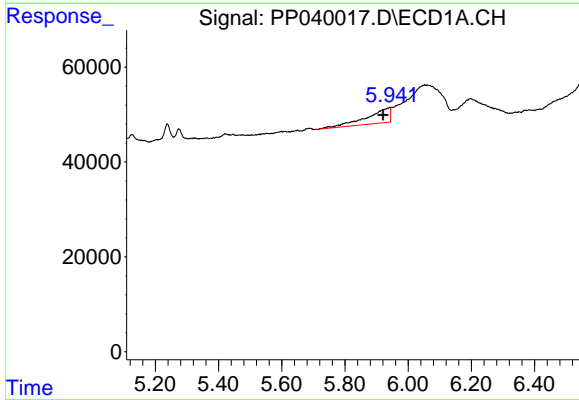
R.T.: 0.000 min
 Exp R.T.: 5.330 min
 Response: 0
 Conc: N.D.

Instrument :
 ECD_P
 ClientSampled :



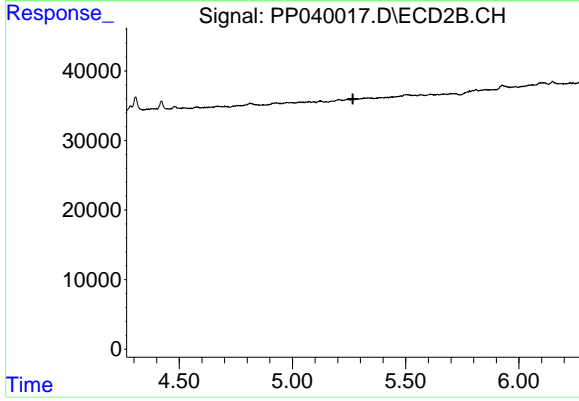
#11 AR-1232-1

R.T.: 4.422 min
 Delta R.T.: -0.010 min
 Response: 11551
 Conc: 28.44 ng/ml



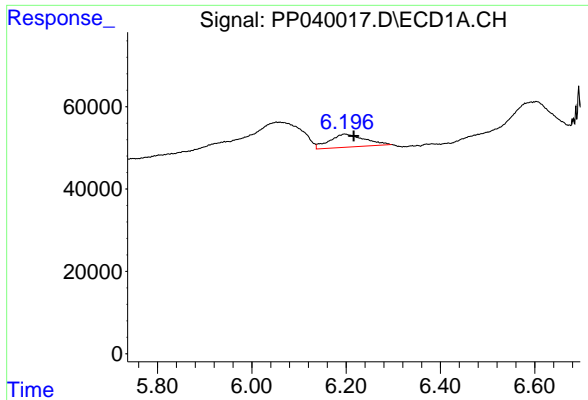
#12 AR-1232-2

R.T.: 5.942 min
 Delta R.T.: 0.021 min
 Response: 157334
 Conc: 458.41 ng/ml



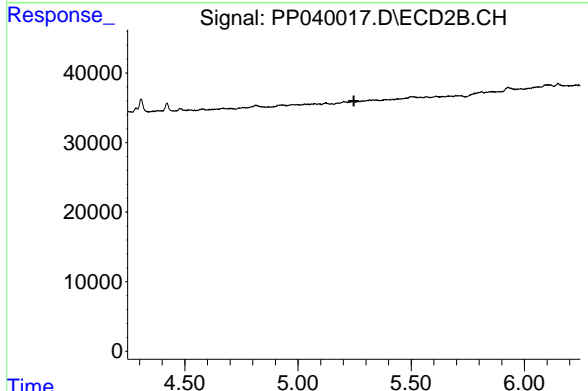
#12 AR-1232-2

R.T.: 0.000 min
 Exp R.T.: 5.267 min
 Response: 0
 Conc: N.D.

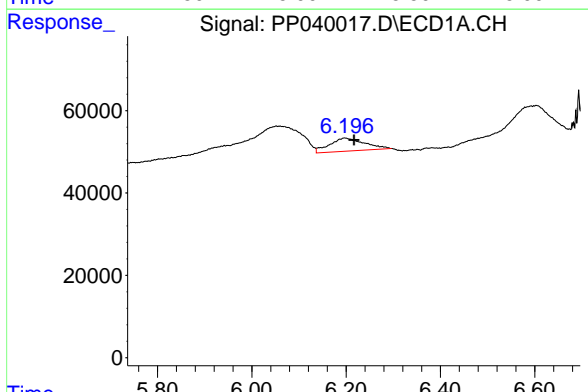


#16 AR-1242-1
 R.T.: 6.196 min
 Delta R.T.: -0.020 min
 Response: 163357
 Conc: 208.05 ng/ml

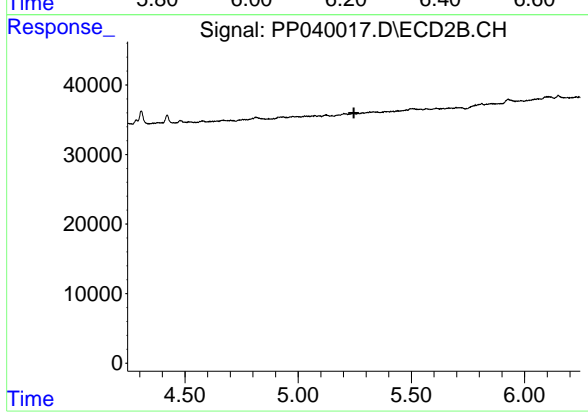
Instrument :
 ECD_P
 ClientSampled :



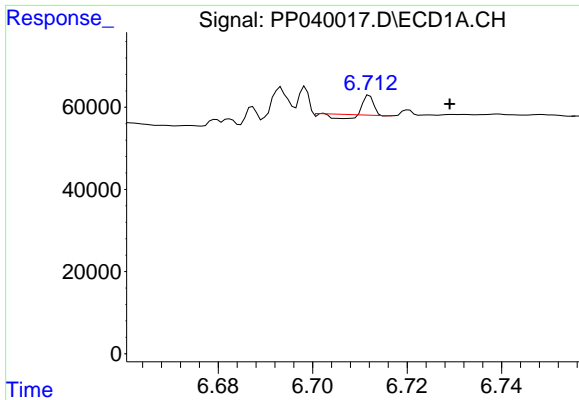
#16 AR-1242-1
 R.T.: 0.000 min
 Exp R.T. : 5.247 min
 Response: 0
 Conc: N.D.



#21 AR-1248-1
 R.T.: 6.196 min
 Delta R.T.: -0.021 min
 Response: 163357
 Conc: 264.80 ng/ml



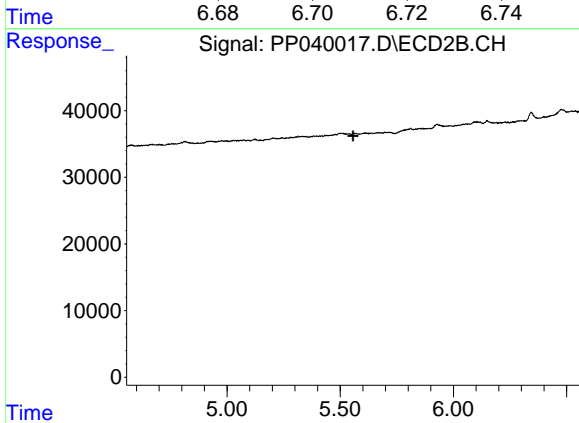
#21 AR-1248-1
 R.T.: 0.000 min
 Exp R.T. : 5.246 min
 Response: 0
 Conc: N.D.



#23 AR-1248-3

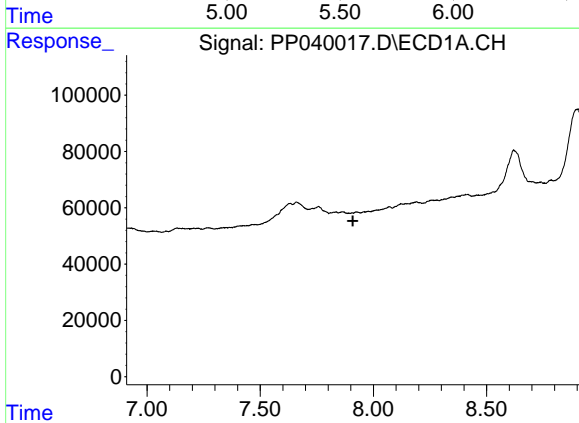
R.T.: 6.712 min
 Delta R.T.: -0.017 min
 Response: 4069
 Conc: 4.54 ng/ml

Instrument :
 ECD_P
 ClientSampleId :



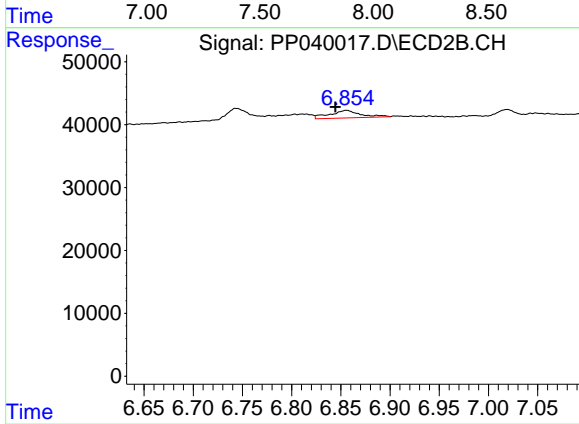
#23 AR-1248-3

R.T.: 0.000 min
 Exp R.T. : 5.556 min
 Response: 0
 Conc: N.D.



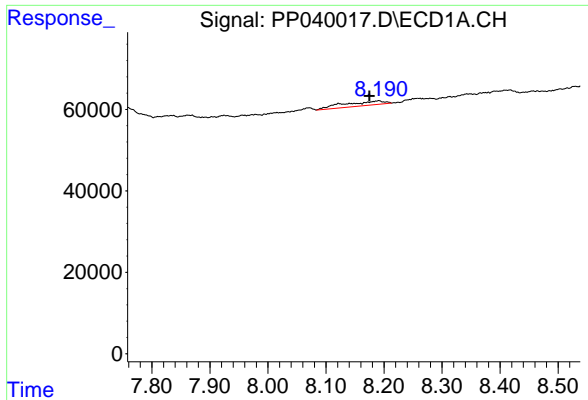
#31 AR-1260-1

R.T.: 0.000 min
 Exp R.T. : 7.909 min
 Response: 0
 Conc: N.D.



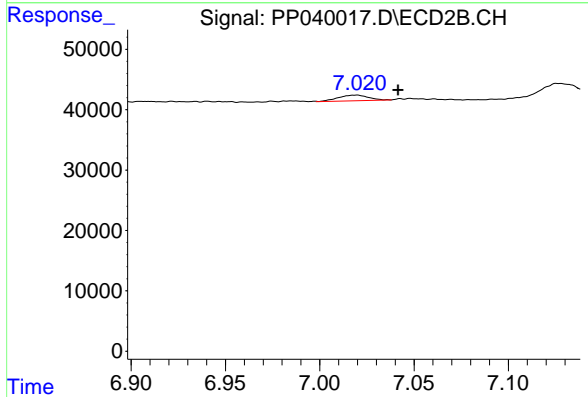
#31 AR-1260-1

R.T.: 6.856 min
 Delta R.T.: 0.011 min
 Response: 25787
 Conc: 25.75 ng/ml

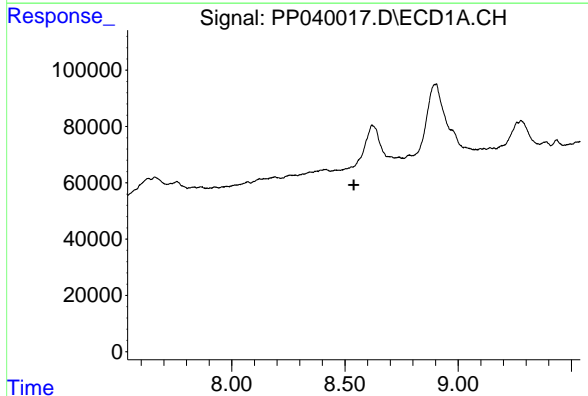


#32 AR-1260-2
 R.T.: 8.191 min
 Delta R.T.: 0.016 min
 Response: 51471
 Conc: 37.66 ng/ml

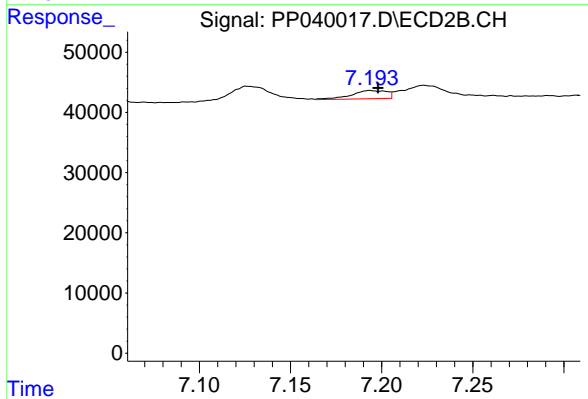
Instrument :
 ECD_P
 ClientSampleId :



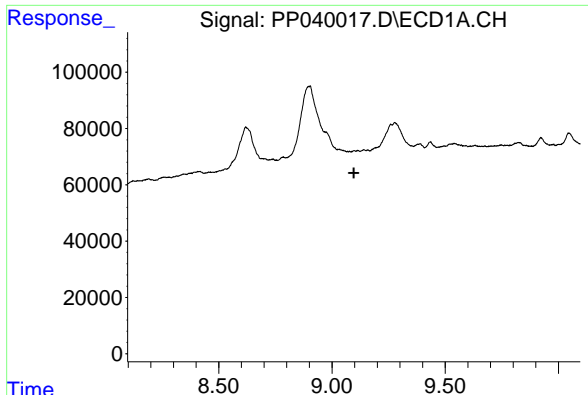
#32 AR-1260-2
 R.T.: 7.019 min
 Delta R.T.: -0.022 min
 Response: 10350
 Conc: 8.74 ng/ml



#33 AR-1260-3
 R.T.: 0.000 min
 Exp R.T. : 8.540 min
 Response: 0
 Conc: N.D.



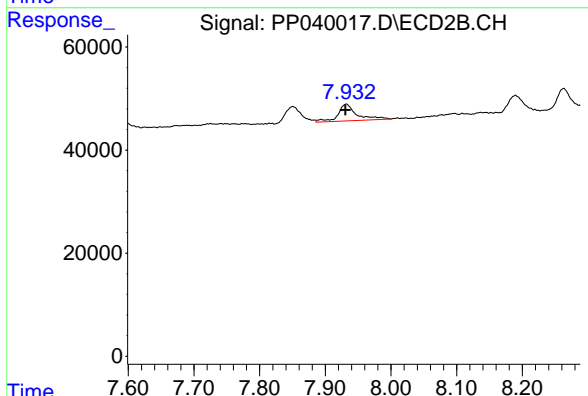
#33 AR-1260-3
 R.T.: 7.194 min
 Delta R.T.: -0.004 min
 Response: 18679
 Conc: 15.81 ng/ml



#35 AR-1260-5

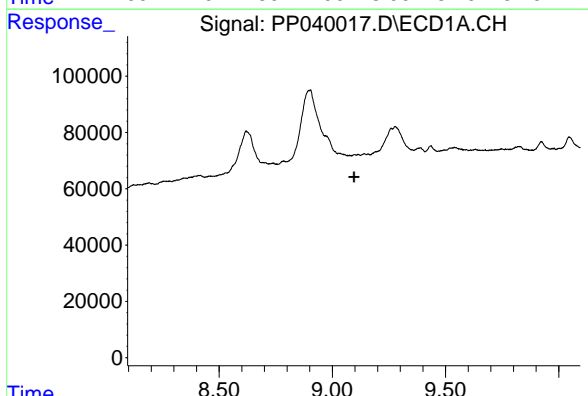
R.T.: 0.000 min
 Exp R.T. : 9.097 min
 Response: 0
 Conc: N.D.

Instrument :
 ECD_P
 ClientSampleId :



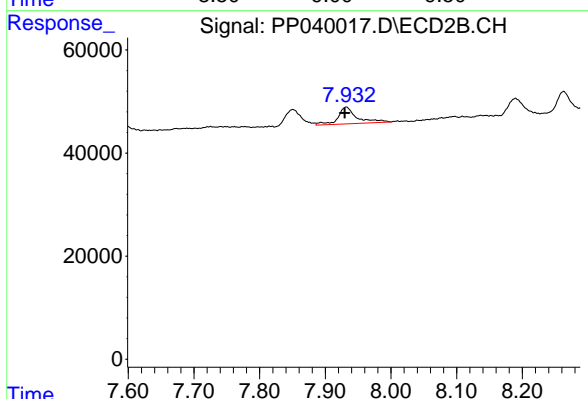
#35 AR-1260-5

R.T.: 7.932 min
 Delta R.T.: 0.000 min
 Response: 65568
 Conc: 32.08 ng/ml



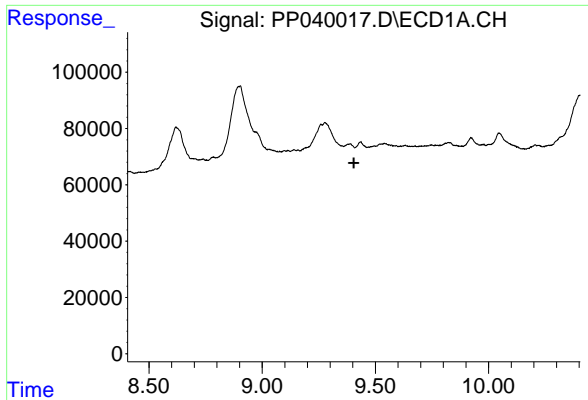
#37 AR-1262-2

R.T.: 0.000 min
 Exp R.T. : 9.096 min
 Response: 0
 Conc: N.D.



#37 AR-1262-2

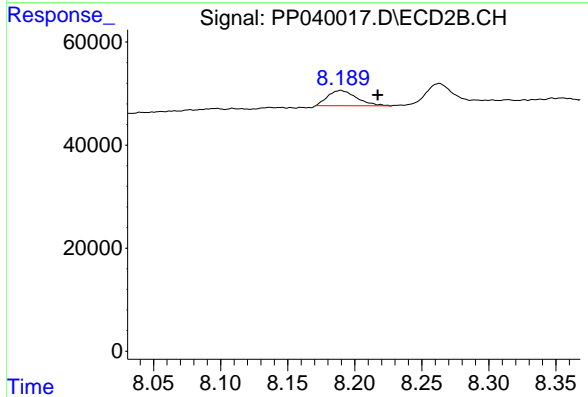
R.T.: 7.932 min
 Delta R.T.: 0.003 min
 Response: 65568
 Conc: 29.14 ng/ml



#38 AR-1262-3

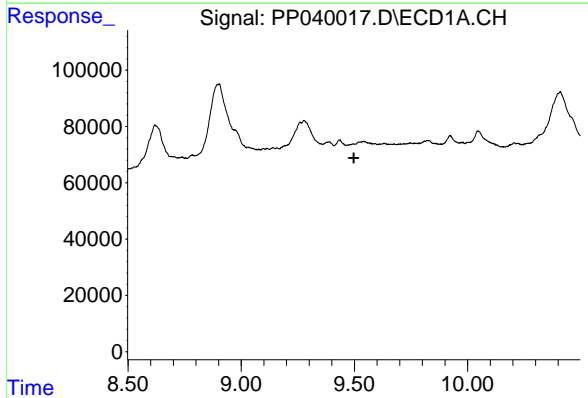
R.T.: 0.000 min
 Exp R.T. : 9.405 min
 Response: 0
 Conc: N.D.

Instrument :
 ECD_P
 ClientSampled :



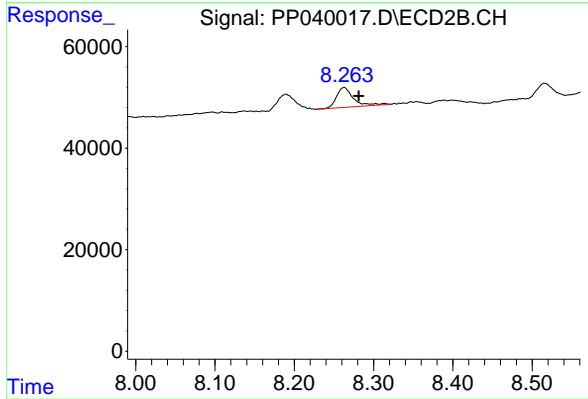
#38 AR-1262-3

R.T.: 8.190 min
 Delta R.T.: -0.027 min
 Response: 44212
 Conc: 45.40 ng/ml



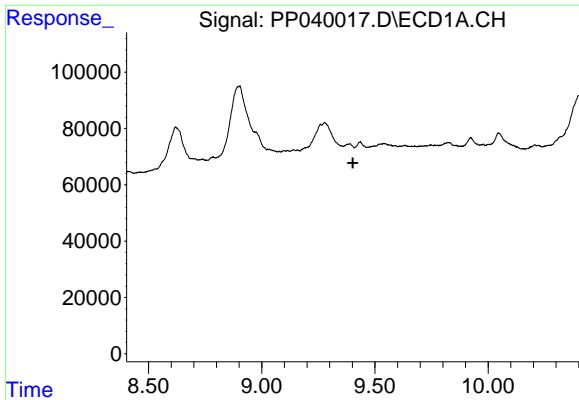
#39 AR-1262-4

R.T.: 0.000 min
 Exp R.T. : 9.498 min
 Response: 0
 Conc: N.D.



#39 AR-1262-4

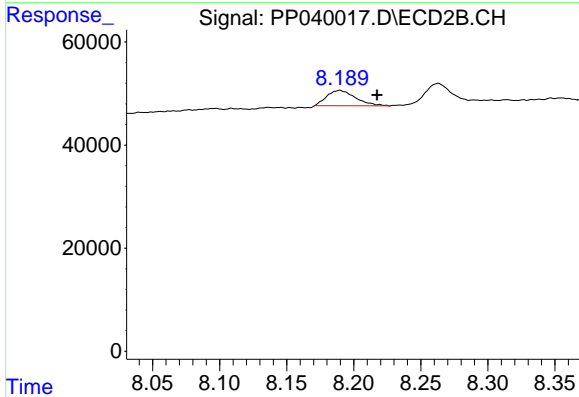
R.T.: 8.263 min
 Delta R.T.: -0.019 min
 Response: 58655
 Conc: 33.09 ng/ml



#41 AR-1268-1

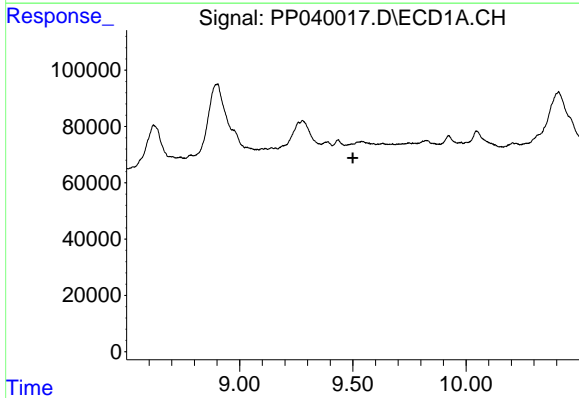
R.T.: 0.000 min
 Exp R.T. : 9.403 min
 Response: 0
 Conc: N.D.

Instrument :
 ECD_P
 ClientSampled :



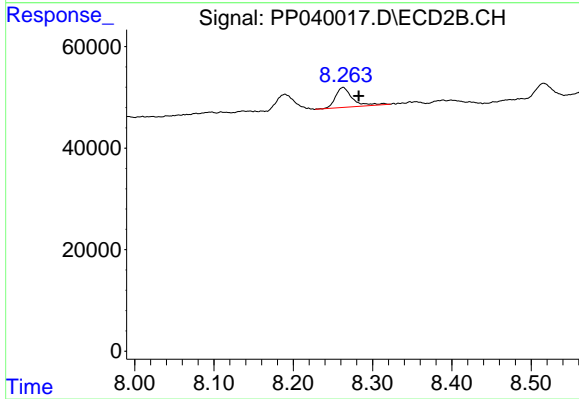
#41 AR-1268-1

R.T.: 8.190 min
 Delta R.T.: -0.028 min
 Response: 44212
 Conc: 16.39 ng/ml



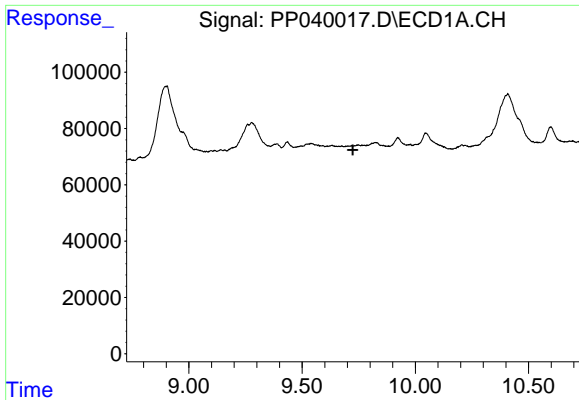
#42 AR-1268-2

R.T.: 0.000 min
 Exp R.T. : 9.500 min
 Response: 0
 Conc: N.D.



#42 AR-1268-2

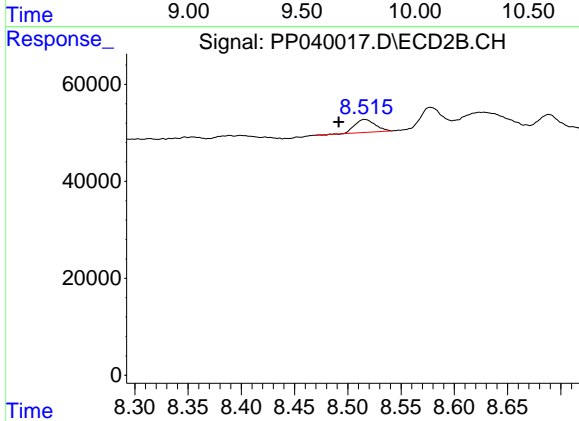
R.T.: 8.263 min
 Delta R.T.: -0.020 min
 Response: 58655
 Conc: 23.43 ng/ml



#43 AR-1268-3

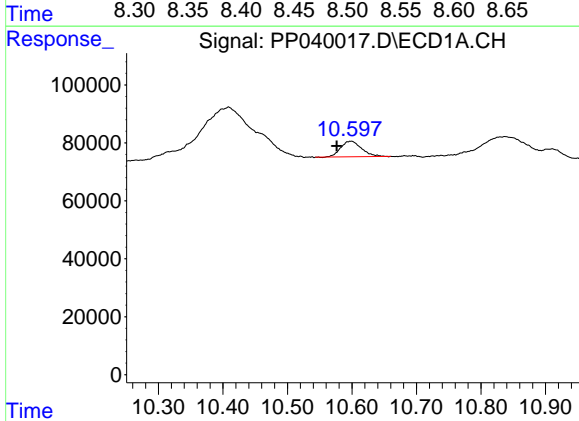
R.T.: 0.000 min
 Exp R.T.: 9.725 min
 Response: 0
 Conc: N.D.

Instrument :
 ECD_P
 ClientSampleId :



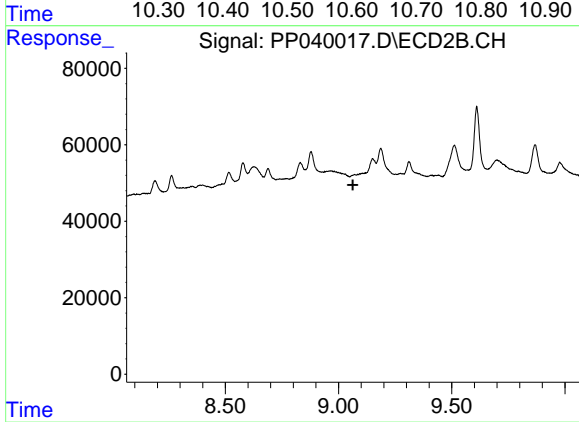
#43 AR-1268-3

R.T.: 8.516 min
 Delta R.T.: 0.025 min
 Response: 36457
 Conc: 16.65 ng/ml



#45 AR-1268-5

R.T.: 10.599 min
 Delta R.T.: 0.022 min
 Response: 120519
 Conc: 14.01 ng/ml



#45 AR-1268-5

R.T.: 0.000 min
 Exp R.T.: 9.064 min
 Response: 0
 Conc: N.D.