

Data Path : Z:\pestpcbsrv\HPCHEM1\ECD_P\Data\PP101322\
 Data File : PP052302.D
 Signal(s) : Signal #1: ECD1A.ch Signal #2: ECD2B.ch
 Acq On : 13 Oct 2022 16:35
 Operator : YP\AJ
 Sample : N5094-02 10X
 Misc :
 ALS Vial : 19 Sample Multiplier: 1

Instrument :
 ECD_P
ClientSampleId :
 BC260212LOK-END-1-2

Integration File signal 1: autoint1.e
 Integration File signal 2: autoint2.e
 Quant Time: Oct 13 16:54:35 2022
 Quant Method : Z:\pestpcbsrv\HPCHEM1\ECD_P\methods\PP101122.M
 Quant Title : GC EXTRACTABLES
 QLast Update : Wed Oct 12 05:20:17 2022
 Response via : Initial Calibration
 Integrator: ChemStation

Volume Inj. : 2 µl
 Signal #1 Phase : ZB-MR1 Signal #2 Phase: ZB-MR2
 Signal #1 Info : 30Mx0.32mmx 0.50µ Signal #2 Info : 30M x 0.32mm x 0.25µm

Compound	RT#1	RT#2	Resp#1	Resp#2	ng/ml	ng/ml

System Monitoring Compounds						
1) SA Tetrachlo...	4.424	3.674	3553905	2506456	2.261	2.188
2) SA Decachlor...	10.243	8.769	3917474	2373006	2.823	2.124
Target Compounds						
26) L6 AR-1254-1	6.459	5.593	1380931	1229685	19.398	17.576
27) L6 AR-1254-2	6.678	5.742	2027991	1104034	19.015	17.621
28) L6 AR-1254-3	7.047	6.152	1897953	1633328	18.059	16.512
29) L6 AR-1254-4	7.333	6.382	1348410	970505	18.454	16.235
30) L6 AR-1254-5	7.754	6.805	1631665	1614463	19.665	18.211

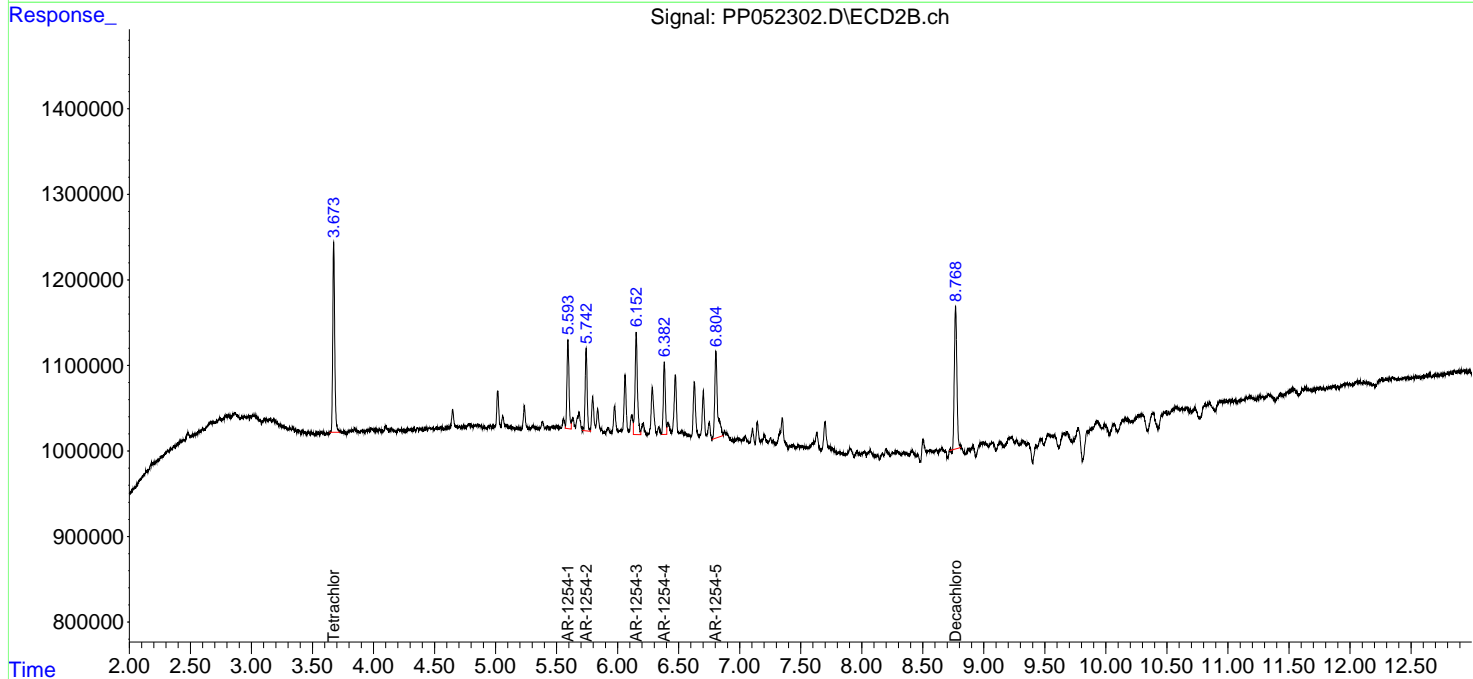
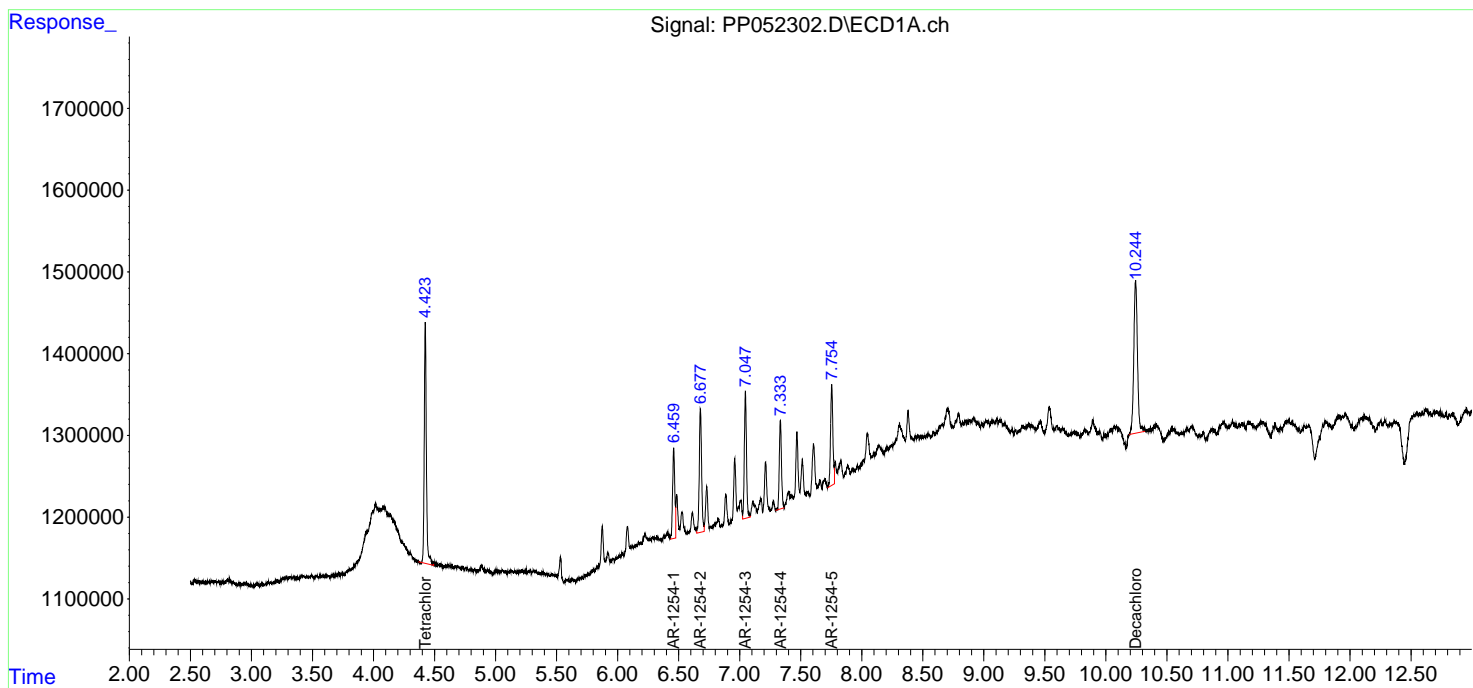
(f)=RT Delta > 1/2 Window (#)=Amounts differ by > 25% (m)=manual int.

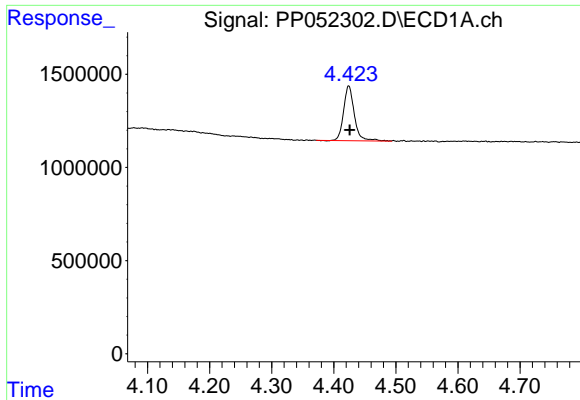
Data Path : Z:\pestpcbsrv\HPCHEM1\ECD_P\Data\PP101322\
 Data File : PP052302.D
 Signal(s) : Signal #1: ECD1A.ch Signal #2: ECD2B.ch
 Acq On : 13 Oct 2022 16:35
 Operator : YP\AJ
 Sample : N5094-02 10X
 Misc :
 ALS Vial : 19 Sample Multiplier: 1

Instrument :
 ECD_P
ClientSampleId :
 BC260212LOK-END-1-2

Integration File signal 1: autoint1.e
 Integration File signal 2: autoint2.e
 Quant Time: Oct 13 16:54:35 2022
 Quant Method : Z:\pestpcbsrv\HPCHEM1\ECD_P\methods\PP101122.M
 Quant Title : GC EXTRACTABLES
 QLast Update : Wed Oct 12 05:20:17 2022
 Response via : Initial Calibration
 Integrator: ChemStation

Volume Inj. : 2 µl
 Signal #1 Phase : ZB-MR1 Signal #2 Phase: ZB-MR2
 Signal #1 Info : 30Mx0.32mmx 0.50µ Signal #2 Info : 30M x 0.32mm x 0.25µm

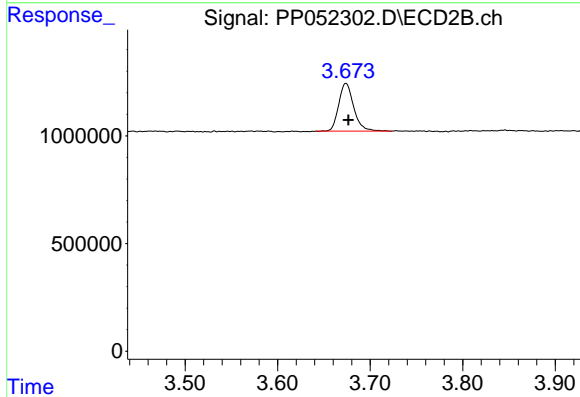




#1 Tetrachloro-m-xylene

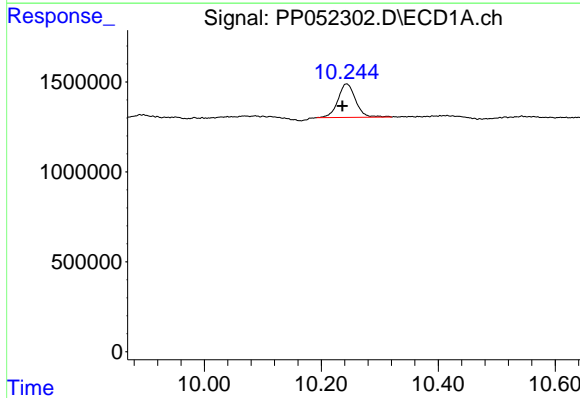
R.T.: 4.424 min
 Delta R.T.: -0.002 min
 Response: 3553905
 Conc: 2.26 ng/ml

Instrument :
 ECD_P
 ClientSampleId :
 BC260212LOK-END-1-2



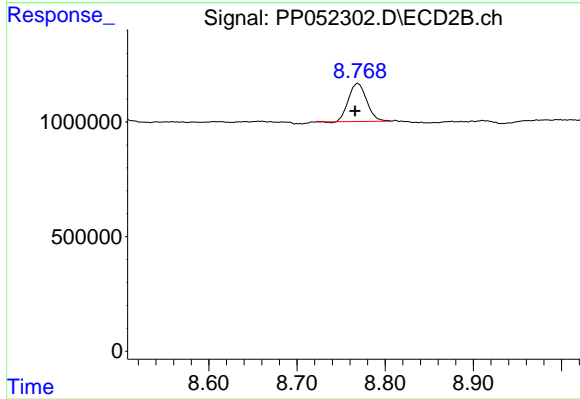
#1 Tetrachloro-m-xylene

R.T.: 3.674 min
 Delta R.T.: -0.003 min
 Response: 2506456
 Conc: 2.19 ng/ml



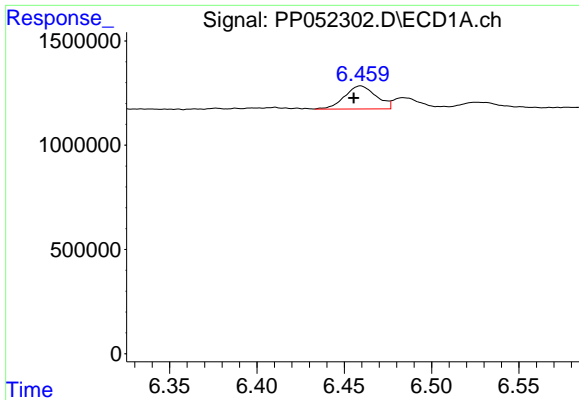
#2 Decachlorobiphenyl

R.T.: 10.243 min
 Delta R.T.: 0.007 min
 Response: 3917474
 Conc: 2.82 ng/ml



#2 Decachlorobiphenyl

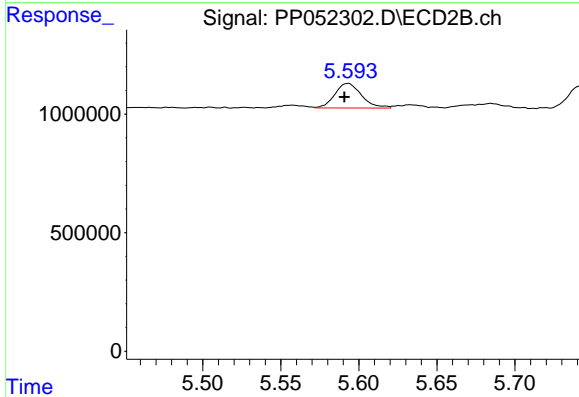
R.T.: 8.769 min
 Delta R.T.: 0.003 min
 Response: 2373006
 Conc: 2.12 ng/ml



#26 AR-1254-1

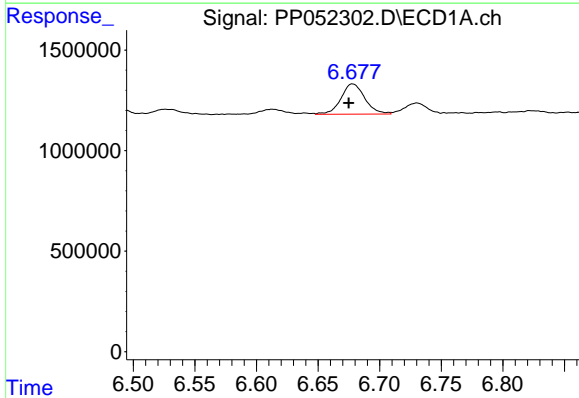
R.T.: 6.459 min
 Delta R.T.: 0.004 min
 Response: 1380931
 Conc: 19.40 ng/ml

Instrument :
 ECD_P
 ClientSampleId :
 BC260212LOK-END-1-2



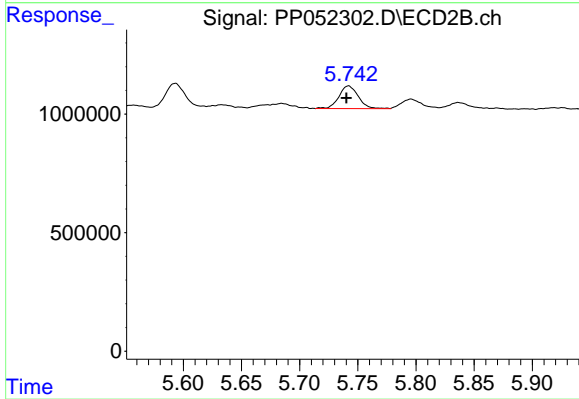
#26 AR-1254-1

R.T.: 5.593 min
 Delta R.T.: 0.002 min
 Response: 1229685
 Conc: 17.58 ng/ml



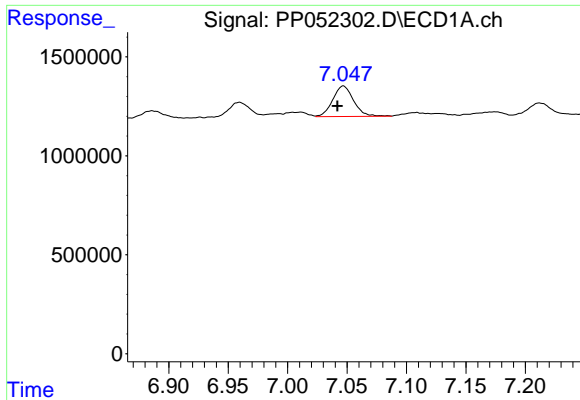
#27 AR-1254-2

R.T.: 6.678 min
 Delta R.T.: 0.003 min
 Response: 2027991
 Conc: 19.02 ng/ml



#27 AR-1254-2

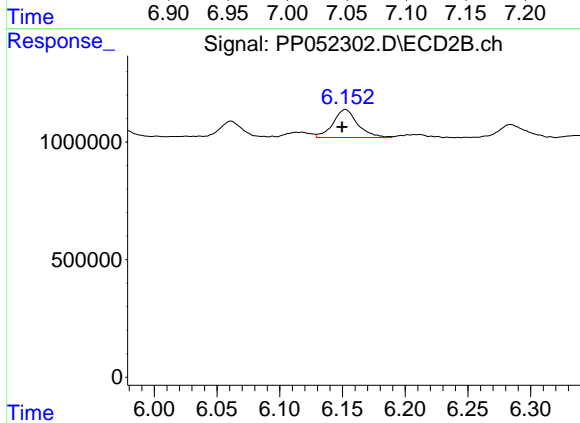
R.T.: 5.742 min
 Delta R.T.: 0.002 min
 Response: 1104034
 Conc: 17.62 ng/ml



#28 AR-1254-3

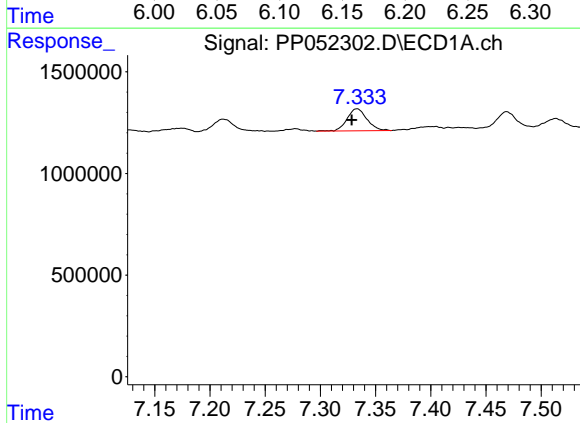
R.T.: 7.047 min
 Delta R.T.: 0.005 min
 Response: 1897953
 Conc: 18.06 ng/ml

Instrument :
 ECD_P
 ClientSampleId :
 BC260212LOK-END-1-2



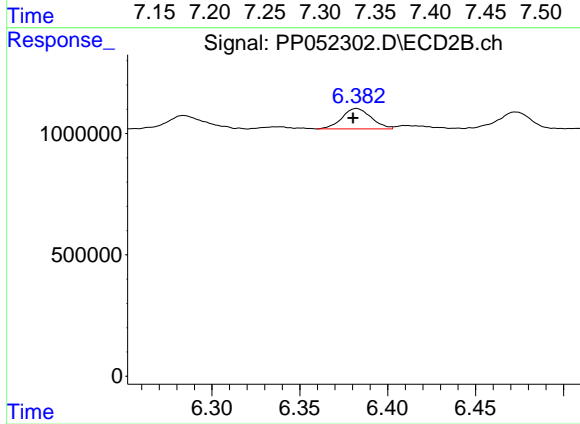
#28 AR-1254-3

R.T.: 6.152 min
 Delta R.T.: 0.003 min
 Response: 1633328
 Conc: 16.51 ng/ml



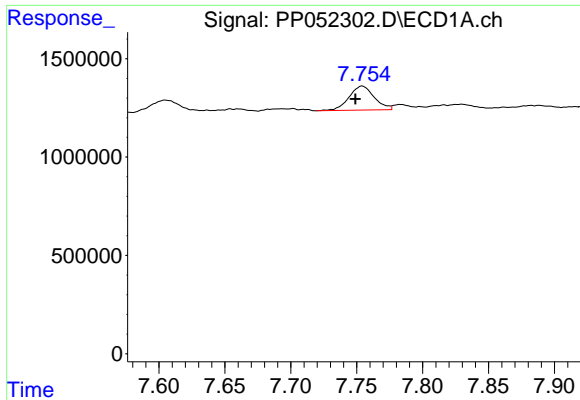
#29 AR-1254-4

R.T.: 7.333 min
 Delta R.T.: 0.005 min
 Response: 1348410
 Conc: 18.45 ng/ml



#29 AR-1254-4

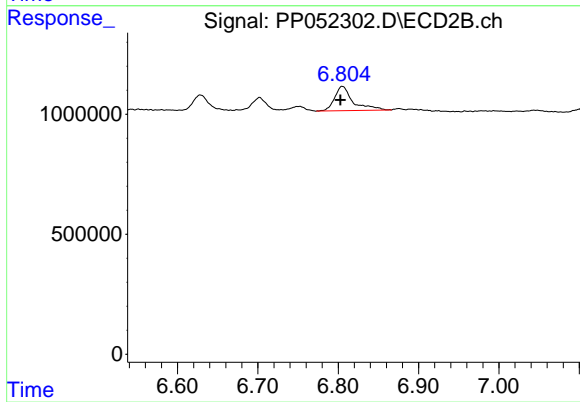
R.T.: 6.382 min
 Delta R.T.: 0.002 min
 Response: 970505
 Conc: 16.24 ng/ml



#30 AR-1254-5

R.T.: 7.754 min
Delta R.T.: 0.005 min
Response: 1631665
Conc: 19.66 ng/ml

Instrument :
ECD_P
ClientSampleId :
BC260212LOK-END-1-2



#30 AR-1254-5

R.T.: 6.805 min
Delta R.T.: 0.003 min
Response: 1614463
Conc: 18.21 ng/ml