

Data Path : Z:\pestpcbsrv\HPCHEM1\ECD_P\Data\PP101323\
 Data File : PP060955.D
 Signal(s) : Signal #1: ECD1A.ch Signal #2: ECD2B.ch
 Acq On : 13 Oct 2023 17:11
 Operator : YP\AJ
 Sample : AR1232ICC500
 Misc :
 ALS Vial : 9 Sample Multiplier: 1

Instrument :
 ECD_P
ClientSampleId :
 AR1232ICC500

Integration File signal 1: autoint1.e
 Integration File signal 2: autoint2.e
 Quant Time: Oct 13 18:10:47 2023
 Quant Method : Z:\pestpcbsrv\HPCHEM1\ECD_P\methods\PP101323.M
 Quant Title : GC EXTRACTABLES
 QLast Update : Fri Oct 13 18:07:58 2023
 Response via : Initial Calibration
 Integrator: ChemStation

Volume Inj. : 2 µl
 Signal #1 Phase : ZB-MR1 Signal #2 Phase: ZB-MR2
 Signal #1 Info : 30Mx0.32mmx 0.50µ Signal #2 Info : 30M x 0.32mm x 0.25µm

Compound	RT#1	RT#2	Resp#1	Resp#2	ng/ml	ng/ml

System Monitoring Compounds						
1) SA Tetrachlo...	4.551	3.687	119.0E6	68323155	50.000	50.000
2) SA Decachlor...	10.508	8.755	83795764	75758219	50.000	50.000
Target Compounds						
11) L3 AR-1232-1	4.929	4.069	25293977	17266769	500.000	500.000
12) L3 AR-1232-2	5.470	4.806	13336424	16534984	500.000	500.000
13) L3 AR-1232-3	5.765	4.984	23464024	9265330	500.000	500.000
14) L3 AR-1232-4	5.929	5.068	11698071	8399313	500.000	500.000
15) L3 AR-1232-5	6.021	5.241	9744271	9392372	500.000	500.000

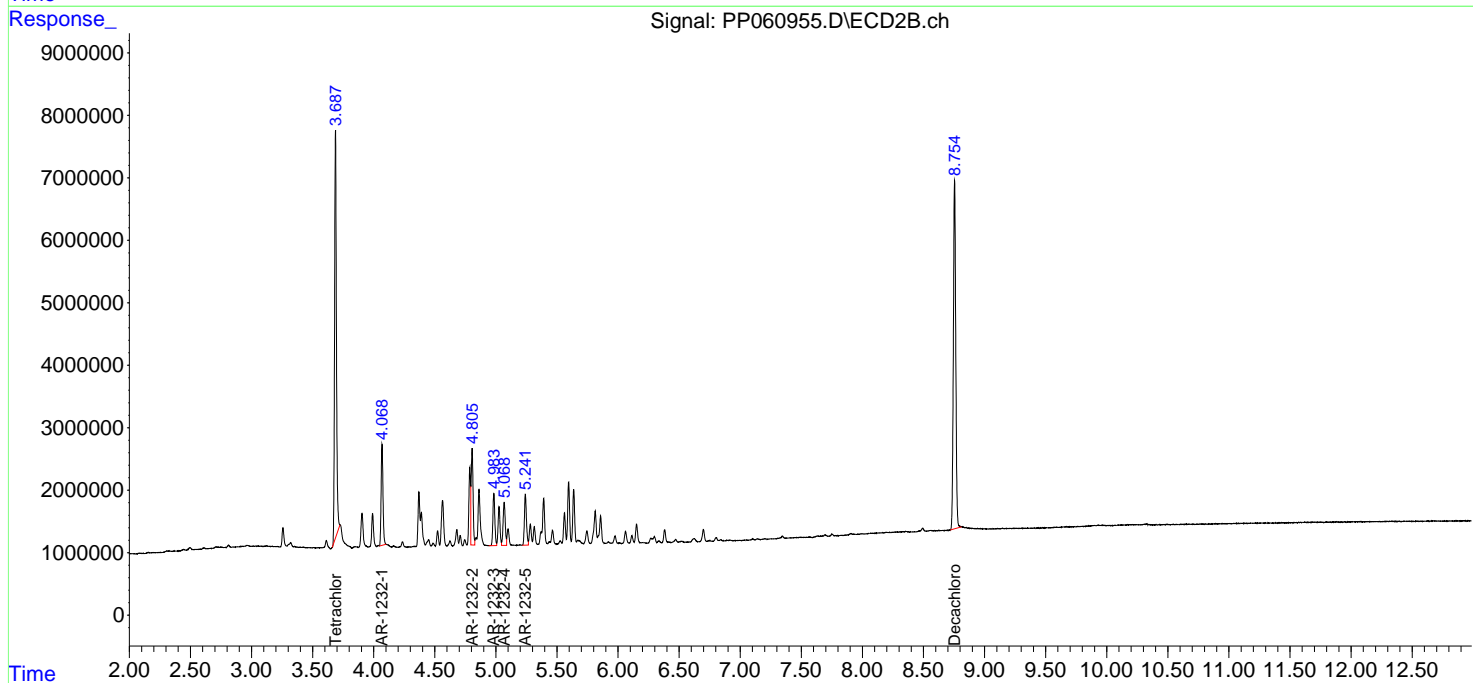
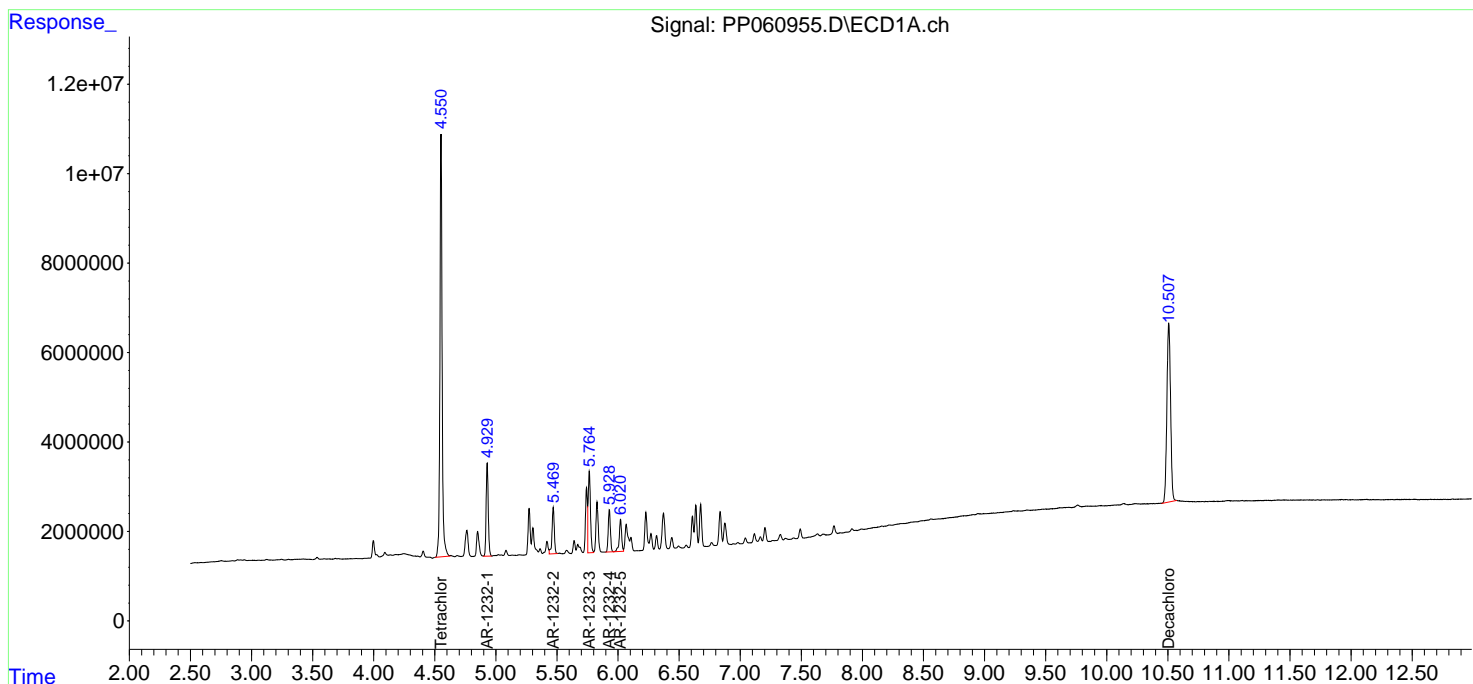
(f)=RT Delta > 1/2 Window (#)=Amounts differ by > 25% (m)=manual int.

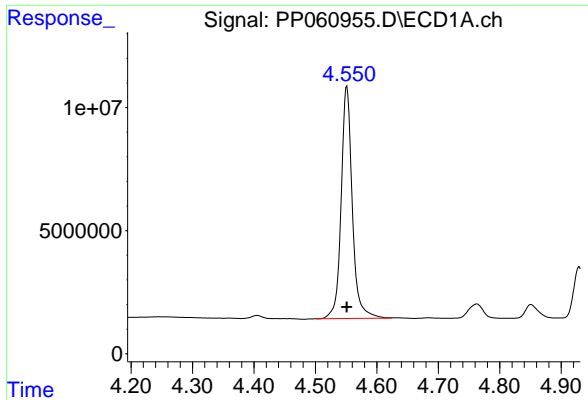
Data Path : Z:\pestpcbsrv\HPCHEM1\ECD_P\Data\PP101323\
 Data File : PP060955.D
 Signal(s) : Signal #1: ECD1A.ch Signal #2: ECD2B.ch
 Acq On : 13 Oct 2023 17:11
 Operator : YP\AJ
 Sample : AR1232ICC500
 Misc :
 ALS Vial : 9 Sample Multiplier: 1

Instrument :
 ECD_P
 ClientSampleId :
 AR1232ICC500

Integration File signal 1: autoint1.e
 Integration File signal 2: autoint2.e
 Quant Time: Oct 13 18:10:47 2023
 Quant Method : Z:\pestpcbsrv\HPCHEM1\ECD_P\methods\PP101323.M
 Quant Title : GC EXTRACTABLES
 QLast Update : Fri Oct 13 18:07:58 2023
 Response via : Initial Calibration
 Integrator: ChemStation

Volume Inj. : 2 µl
 Signal #1 Phase : ZB-MR1 Signal #2 Phase: ZB-MR2
 Signal #1 Info : 30Mx0.32mmx 0.50µ Signal #2 Info : 30M x 0.32mm x 0.25µm

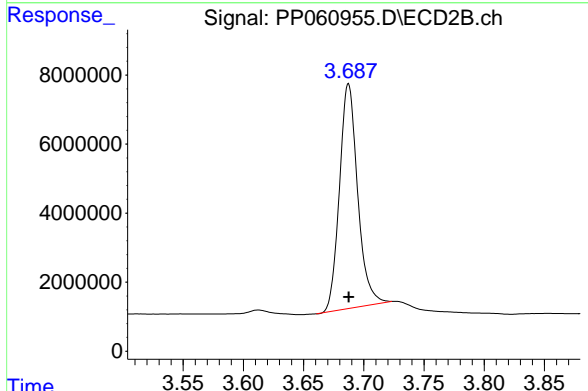




#1 Tetrachloro-m-xylene

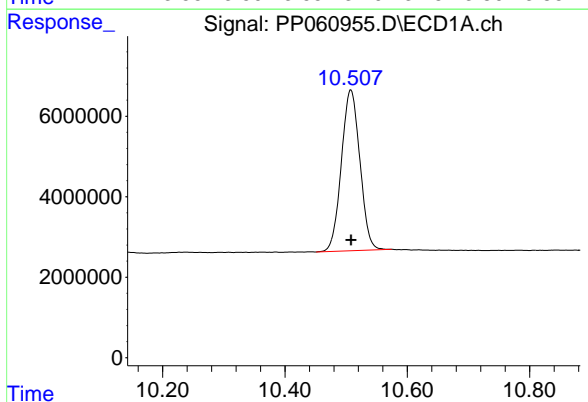
R.T.: 4.551 min
 Delta R.T.: 0.000 min
 Response: 118986009
 Conc: 50.00 ng/ml

Instrument :
 ECD_P
 ClientSampleId :
 AR1232ICC500



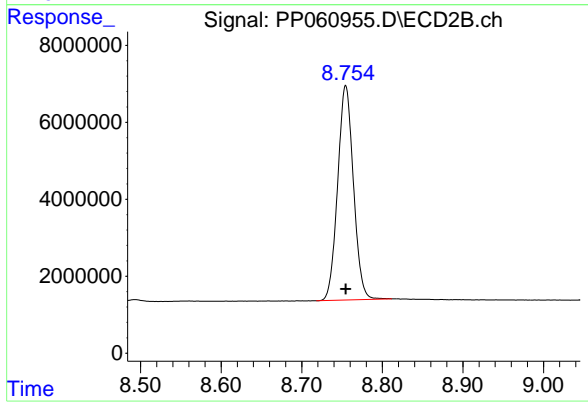
#1 Tetrachloro-m-xylene

R.T.: 3.687 min
 Delta R.T.: 0.000 min
 Response: 68323155
 Conc: 50.00 ng/ml



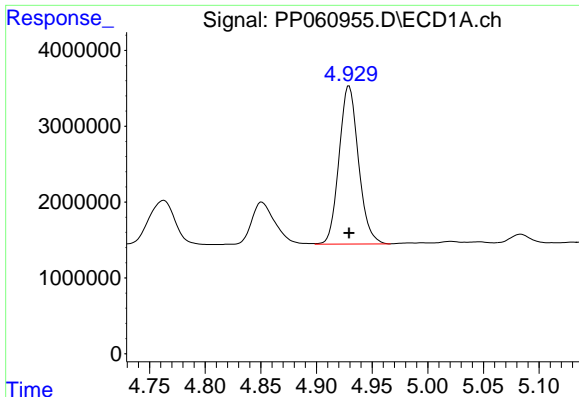
#2 Decachlorobiphenyl

R.T.: 10.508 min
 Delta R.T.: 0.000 min
 Response: 83795764
 Conc: 50.00 ng/ml



#2 Decachlorobiphenyl

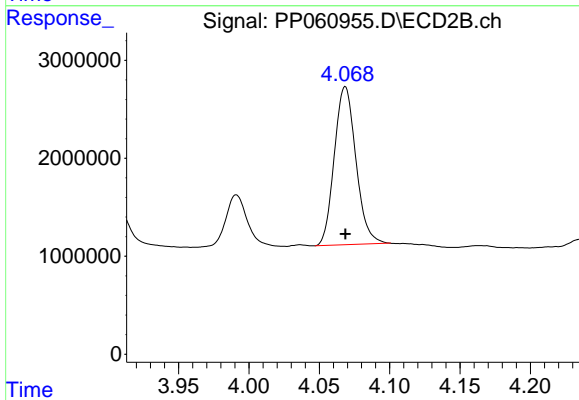
R.T.: 8.755 min
 Delta R.T.: 0.000 min
 Response: 75758219
 Conc: 50.00 ng/ml



#11 AR-1232-1

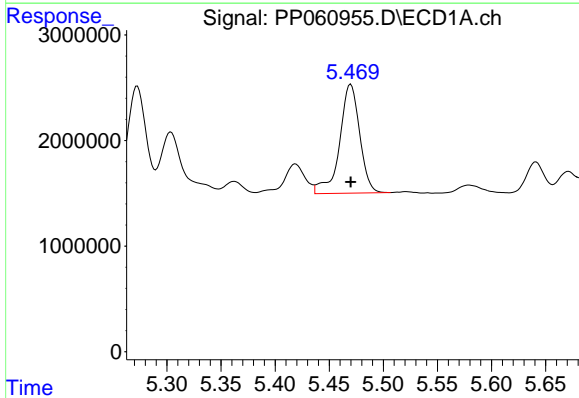
R.T.: 4.929 min
 Delta R.T.: 0.000 min
 Response: 25293977
 Conc: 500.00 ng/ml

Instrument :
 ECD_P
 ClientSampleId :
 AR1232ICC500



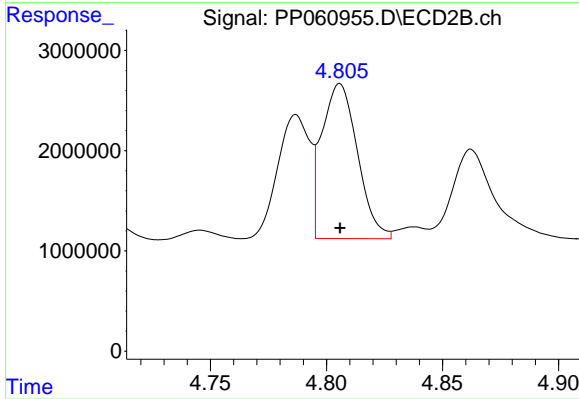
#11 AR-1232-1

R.T.: 4.069 min
 Delta R.T.: 0.000 min
 Response: 17266769
 Conc: 500.00 ng/ml



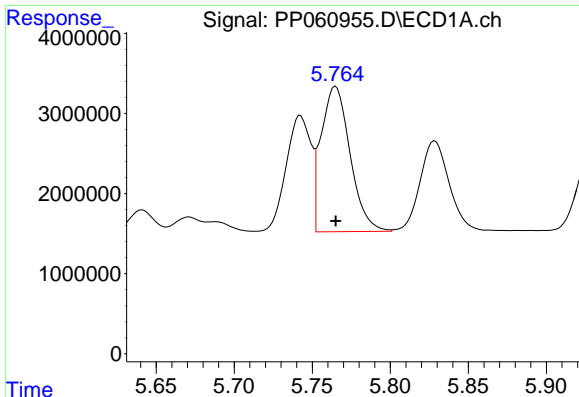
#12 AR-1232-2

R.T.: 5.470 min
 Delta R.T.: 0.000 min
 Response: 13336424
 Conc: 500.00 ng/ml



#12 AR-1232-2

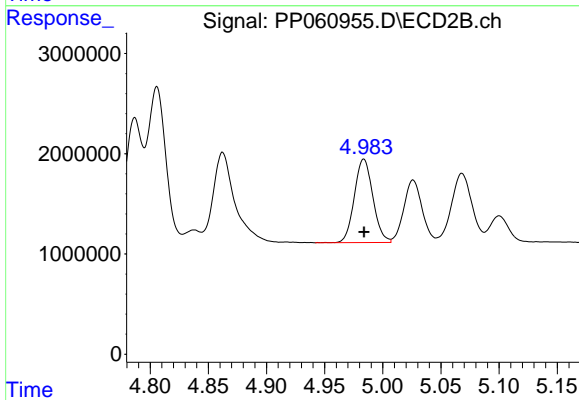
R.T.: 4.806 min
 Delta R.T.: 0.000 min
 Response: 16534984
 Conc: 500.00 ng/ml



#13 AR-1232-3

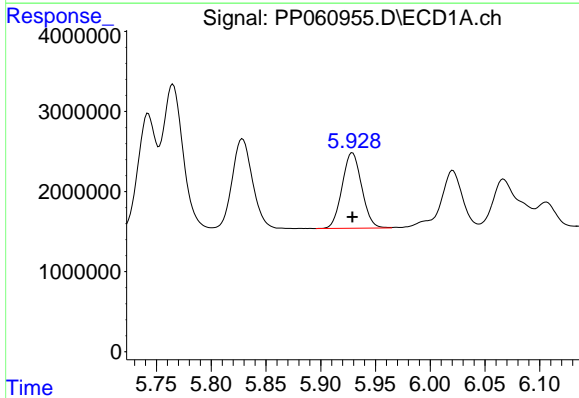
R.T.: 5.765 min
 Delta R.T.: 0.000 min
 Response: 23464024
 Conc: 500.00 ng/ml

Instrument :
 ECD_P
 ClientSampleId :
 AR1232ICC500



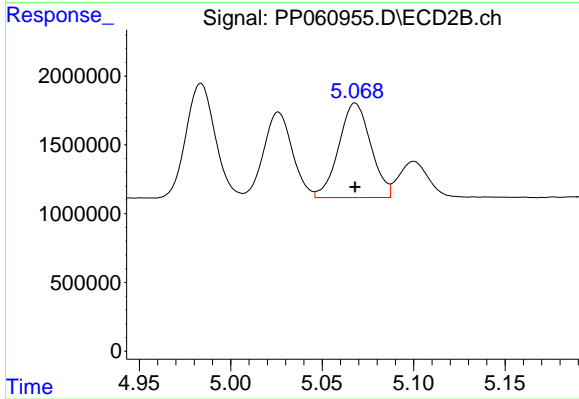
#13 AR-1232-3

R.T.: 4.984 min
 Delta R.T.: 0.000 min
 Response: 9265330
 Conc: 500.00 ng/ml



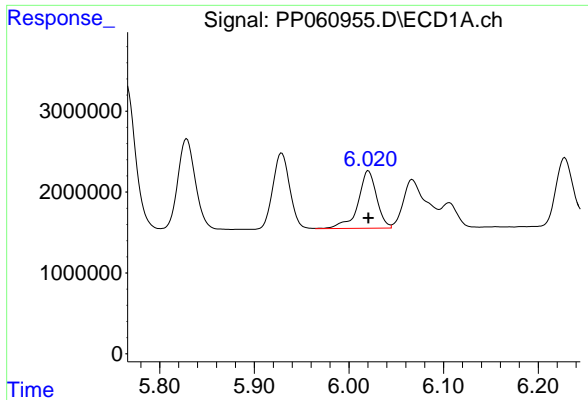
#14 AR-1232-4

R.T.: 5.929 min
 Delta R.T.: 0.000 min
 Response: 11698071
 Conc: 500.00 ng/ml



#14 AR-1232-4

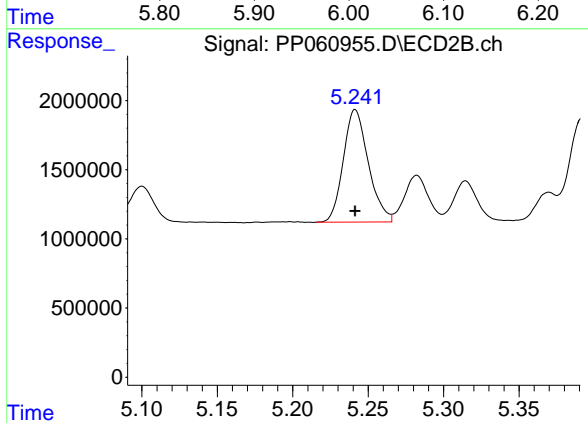
R.T.: 5.068 min
 Delta R.T.: 0.000 min
 Response: 8399313
 Conc: 500.00 ng/ml



#15 AR-1232-5

R.T.: 6.021 min
Delta R.T.: 0.000 min
Response: 9744271
Conc: 500.00 ng/ml

Instrument :
ECD_P
ClientSampleId :
AR1232ICC500



#15 AR-1232-5

R.T.: 5.241 min
Delta R.T.: 0.000 min
Response: 9392372
Conc: 500.00 ng/ml