

Data Path : Z:\pestpcbsrv\HPCHEM1\ECD_P\Data\PP101419\
 Data File : PP030462.D
 Signal(s) : Signal #1: ECD1A.CH Signal #2: ECD2B.CH
 Acq On : 14 Oct 2019 11:02
 Operator : DD\AJ
 Sample : K5145-03MS
 Misc :
 ALS Vial : 5 Sample Multiplier: 1

Instrument :
 ECD_P
ClientSampleId :
 HD-01-100919MS

Manual Integrations
APPROVED
 Ankita
 10/15/2019 11:53:41 AM

Integration File signal 1: autoint1.e
 Integration File signal 2: autoint2.e
 Quant Time: Oct 14 14:16:04 2019
 Quant Method : Z:\pestpcbsrv\HPCHEM1\ECD_P\methods\PP100919.M
 Quant Title : 8080.M
 QLast Update : Thu Oct 10 09:35:34 2019
 Response via : Initial Calibration
 Integrator: ChemStation 6890 Scale Mode: Large solvent peaks clipped

Volume Inj. : 2 µl
 Signal #1 Phase : ZB-CLPesticides-1 Signal #2 Phase: ZB-CLPesticides-2
 Signal #1 Info : 30M x 0.32mm x0.5 Signal #2 Info : 30M x 0.32mm x 0.25µm

Compound	RT#1	RT#2	Resp#1	Resp#2	ng/ml	ng/ml

System Monitoring Compounds						
4) S 2,4-DCAA	11.037	11.191	171.1E6	98949144	473.199	450.265
Target Compounds						
1) T Dalapon	2.630	2.444	349.9E6	203.2E6	635.555	700.187
2) T 3,5-DICHL...	9.457	9.317	264.0E6	132.5E6	438.325	455.514
5) T DICAMBA	11.345	11.484	984.3E6	590.6E6	665.578	689.892
6) T MCPP	11.690	11.692	71833372	26647162	78.830m	62.594
7) T MCPA	11.943	12.078	72381356	58610807	57.367	79.928 #
8) T DICHLORPROP	12.536	12.601	268.9E6	167.7E6	751.545	806.555
9) T 2,4-D	12.893	13.083	380.7E6	240.7E6	956.895	1036.416
10) T Pentachlo...	13.251	13.641	1443.0E6	845.7E6	253.282	253.062
11) T 2,4,5-TP ...	14.138	14.243	1639.7E6	1030.2E6	820.747	837.999
12) T 2,4,5-T	14.534	14.785	1693.2E6	1041.9E6	872.297	992.230
13) T 2,4-DB	15.278	15.466	227.8E6	131.4E6	894.996	924.488
14) T DINOSEB	16.736	15.871	267.0E6	155.0E6	241.726	243.061
15) T Picloram	16.515	17.184	1986.3E6	1239.0E6	867.962	883.517
16) T DCPA	17.090	17.083	1461.5E6	929.2E6	555.709	580.700

(f)=RT Delta > 1/2 Window (#)=Amounts differ by > 25% (m)=manual int.

Data Path : Z:\pestpcbsrv\HPCHEM1\ECD_P\Data\PP101419\
 Data File : PP030462.D
 Signal(s) : Signal #1: ECD1A.CH Signal #2: ECD2B.CH
 Acq On : 14 Oct 2019 11:02
 Operator : DD\AJ
 Sample : K5145-03MS
 Misc :
 ALS Vial : 5 Sample Multiplier: 1

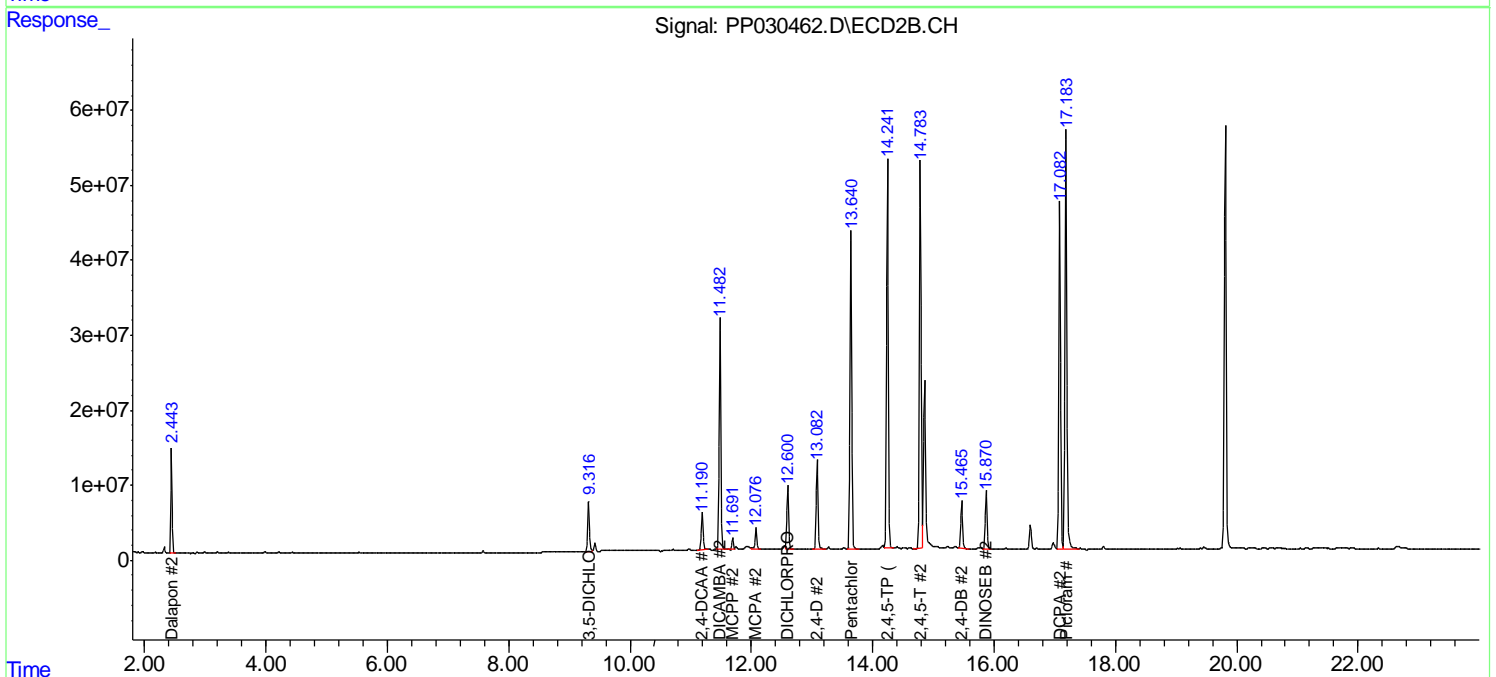
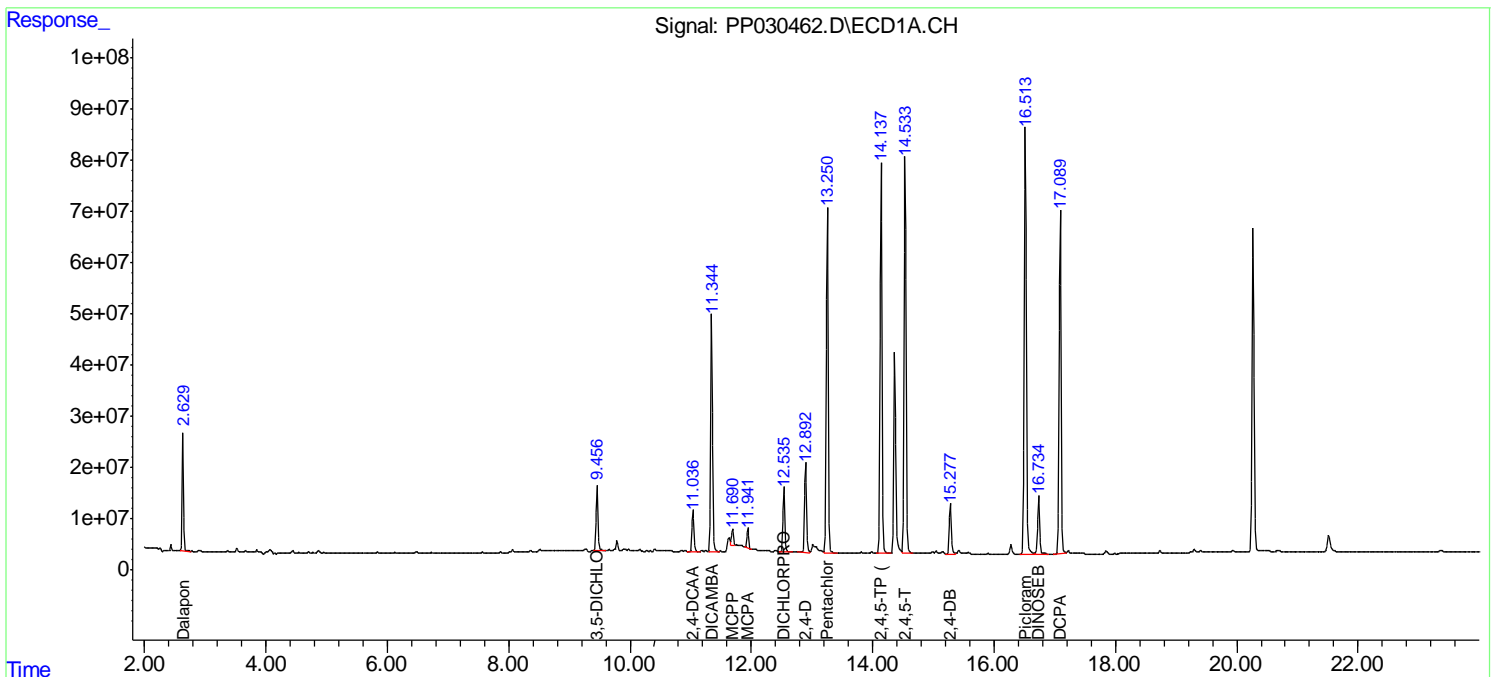
Instrument :
 ECD_P
 Client Sampled :
 HD-01-100919MS

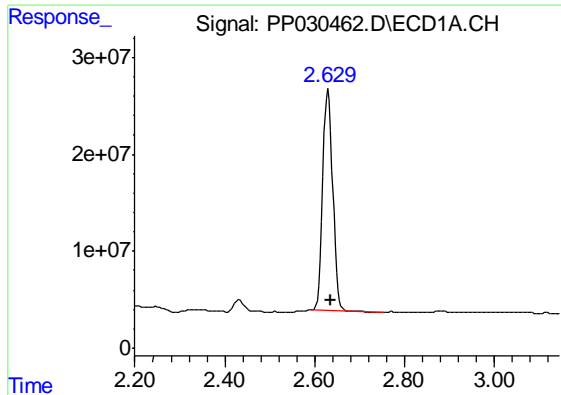
Manual Integrations
 APPROVED

Ankita
 10/15/2019 11:53:41 AM

Integration File signal 1: autoint1.e
 Integration File signal 2: autoint2.e
 Quant Time: Oct 14 14:16:04 2019
 Quant Method : Z:\pestpcbsrv\HPCHEM1\ECD_P\methods\PP100919.M
 Quant Title : 8080.M
 QLast Update : Thu Oct 10 09:35:34 2019
 Response via : Initial Calibration
 Integrator: ChemStation 6890 Scale Mode: Large solvent peaks clipped

Volume Inj. : 2 µl
 Signal #1 Phase : ZB-CLPesticides-1 Signal #2 Phase: ZB-CLPesticides-2
 Signal #1 Info : 30M x 0.32mm x0.5 Signal #2 Info : 30M x 0.32mm x 0.25µm





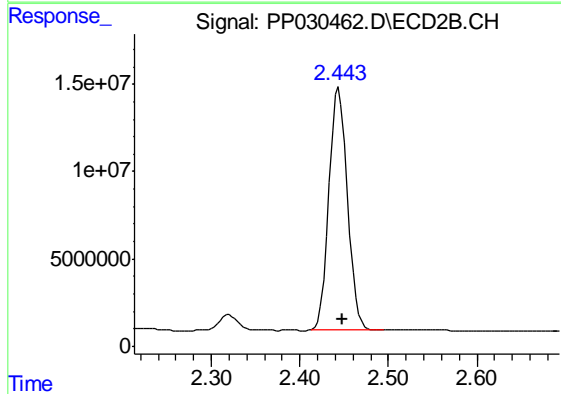
#1 Dalapon

R.T.: 2.630 min
 Delta R.T.: -0.005 min
 Response: 349926272
 Conc: 635.56 ng/ml

Instrument :
 ECD_P
 ClientSampleId :
 HD-01-100919MS

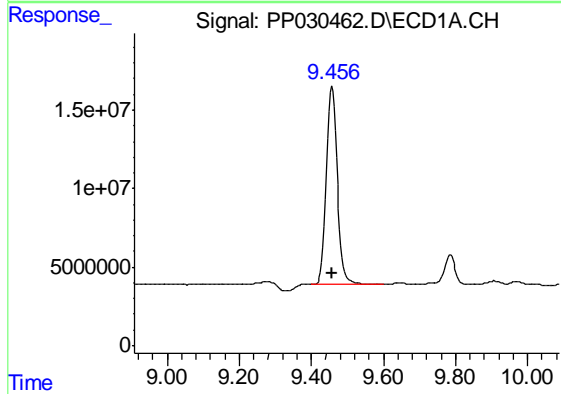
Manual Integrations
 APPROVED

Ankita
 10/15/2019 11:53:41 AM



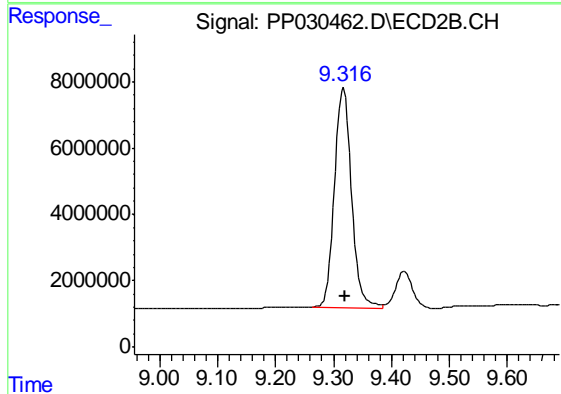
#1 Dalapon

R.T.: 2.444 min
 Delta R.T.: -0.004 min
 Response: 203240743
 Conc: 700.19 ng/ml



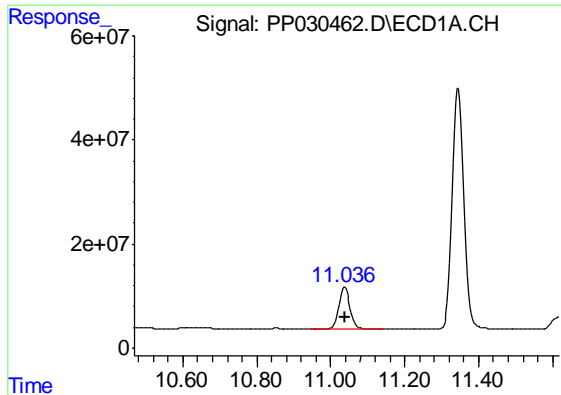
#2 3,5-DICHLOROBENZOIC ACID

R.T.: 9.457 min
 Delta R.T.: 0.000 min
 Response: 263992028
 Conc: 438.33 ng/ml



#2 3,5-DICHLOROBENZOIC ACID

R.T.: 9.317 min
 Delta R.T.: -0.002 min
 Response: 132534646
 Conc: 455.51 ng/ml



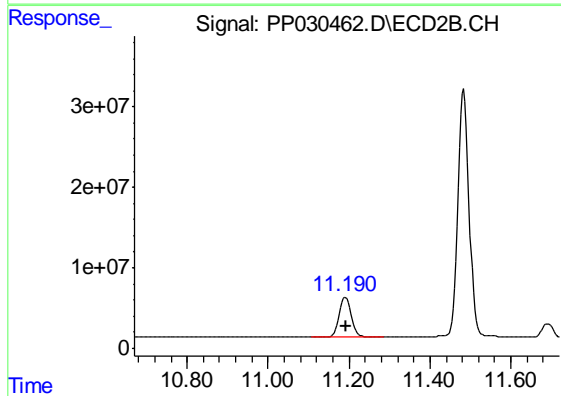
#4 2,4-DCAA

R.T.: 11.037 min
 Delta R.T.: 0.000 min
 Response: 171093305
 Conc: 473.20 ng/ml

Instrument :
 ECD_P
 ClientSampleId :
 HD-01-100919MS

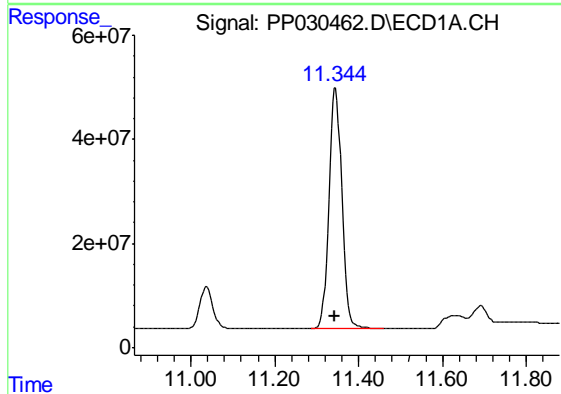
Manual Integrations
 APPROVED

Ankita
 10/15/2019 11:53:41 AM



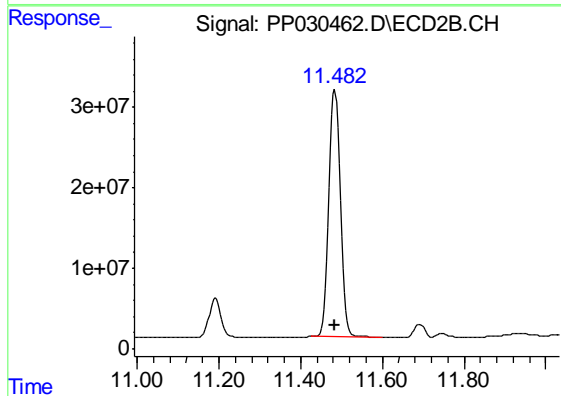
#4 2,4-DCAA

R.T.: 11.191 min
 Delta R.T.: -0.002 min
 Response: 98949144
 Conc: 450.27 ng/ml



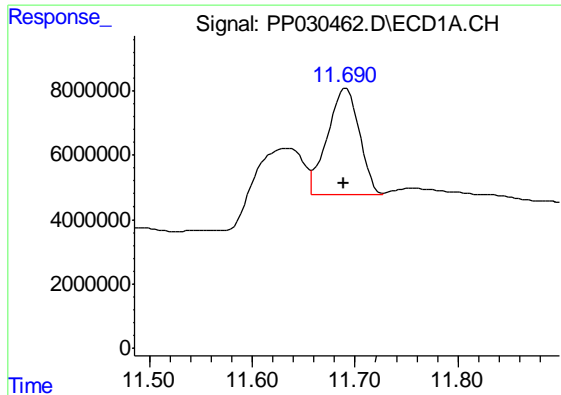
#5 DICAMBA

R.T.: 11.345 min
 Delta R.T.: 0.001 min
 Response: 984308350
 Conc: 665.58 ng/ml



#5 DICAMBA

R.T.: 11.484 min
 Delta R.T.: 0.000 min
 Response: 590554111
 Conc: 689.89 ng/ml



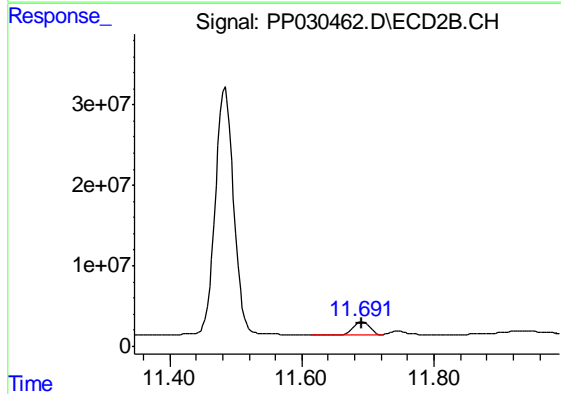
#6 MCPP

R.T.: 11.690 min
 Delta R.T.: 0.000 min
 Response: 71833372
 Conc: 78.83 ug/ml m

Instrument :
 ECD_P
 ClientSampleId :
 HD-01-100919MS

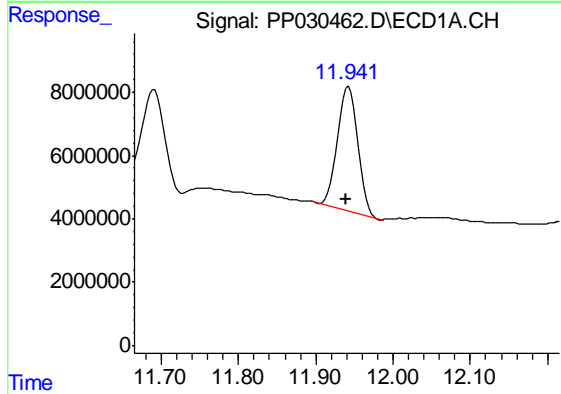
Manual Integrations
 APPROVED

Ankita
 10/15/2019 11:53:41 AM



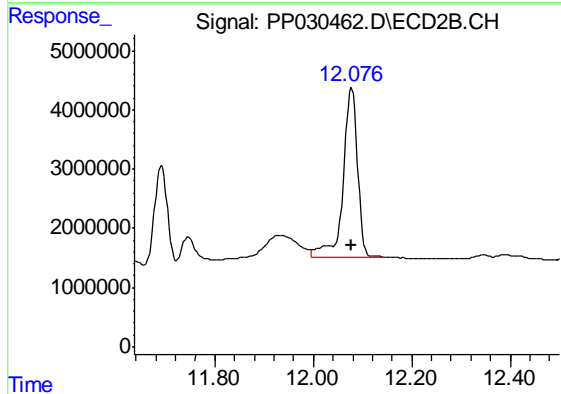
#6 MCPP

R.T.: 11.692 min
 Delta R.T.: 0.000 min
 Response: 26647162
 Conc: 62.59 ug/ml



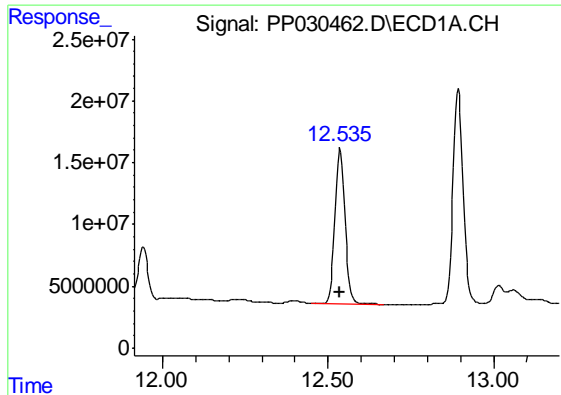
#7 MCPA

R.T.: 11.943 min
 Delta R.T.: 0.002 min
 Response: 72381356
 Conc: 57.37 ug/ml



#7 MCPA

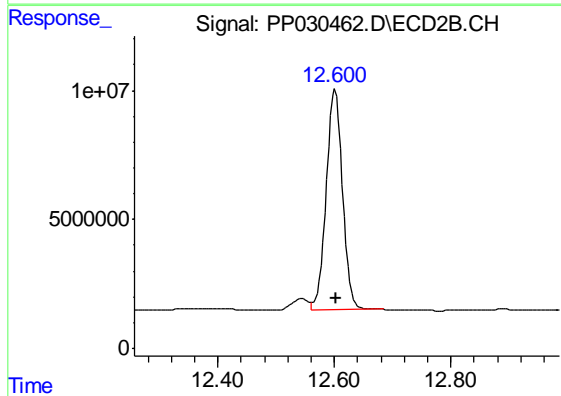
R.T.: 12.078 min
 Delta R.T.: 0.000 min
 Response: 58610807
 Conc: 79.93 ug/ml



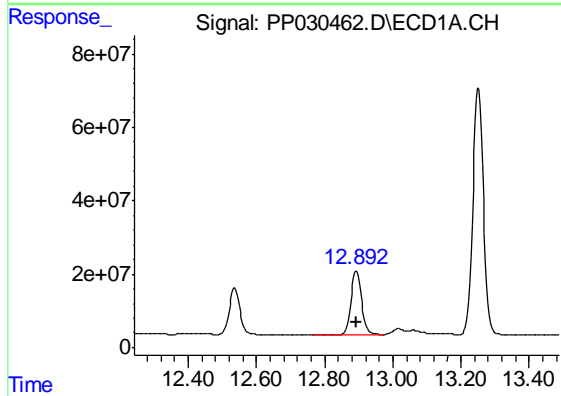
#8 DICHLORPROP
 R.T.: 12.536 min
 Delta R.T.: 0.000 min
 Response: 268905085
 Conc: 751.54 ng/ml

Instrument :
 ECD_P
ClientSampled :
 HD-01-100919MS

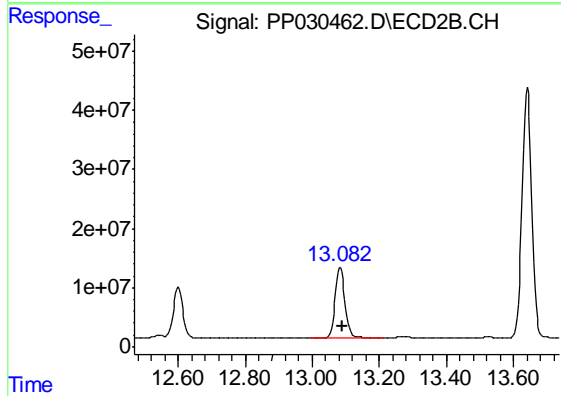
Manual Integrations
APPROVED
 Ankita
 10/15/2019 11:53:41 AM



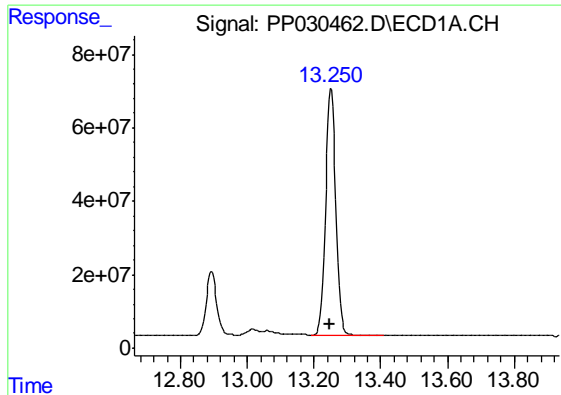
#8 DICHLORPROP
 R.T.: 12.601 min
 Delta R.T.: -0.001 min
 Response: 167654170
 Conc: 806.56 ng/ml



#9 2,4-D
 R.T.: 12.893 min
 Delta R.T.: 0.000 min
 Response: 380670749
 Conc: 956.90 ng/ml



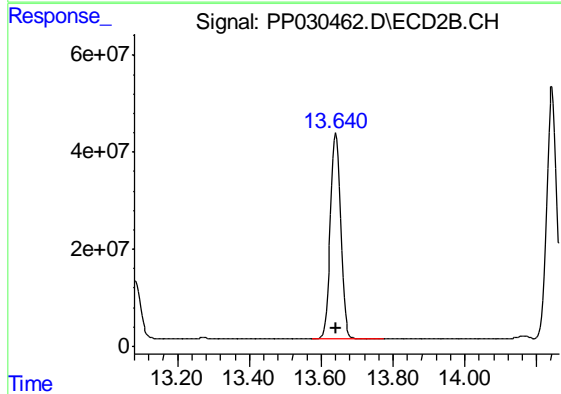
#9 2,4-D
 R.T.: 13.083 min
 Delta R.T.: -0.005 min
 Response: 240692169
 Conc: 1036.42 ng/ml



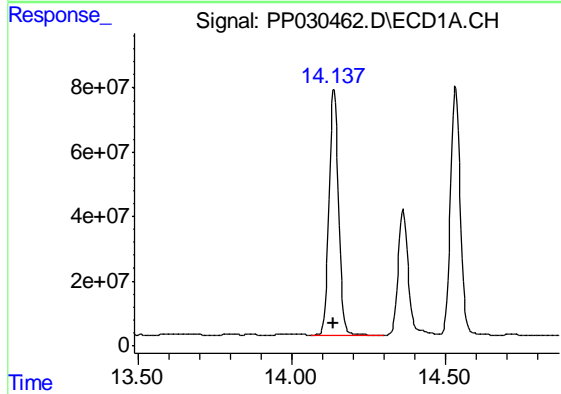
#10 Pentachlorophenol
 R.T.: 13.251 min
 Delta R.T.: 0.003 min
 Response: 1443034870
 Conc: 253.28 ng/ml

Instrument :
 ECD_P
 ClientSampled :
 HD-01-100919MS

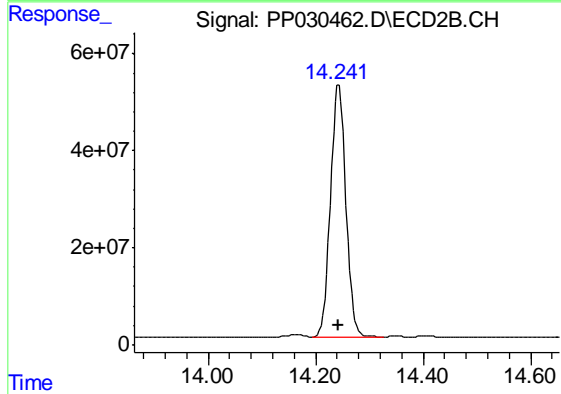
Manual Integrations
 APPROVED
 Ankita
 10/15/2019 11:53:41 AM



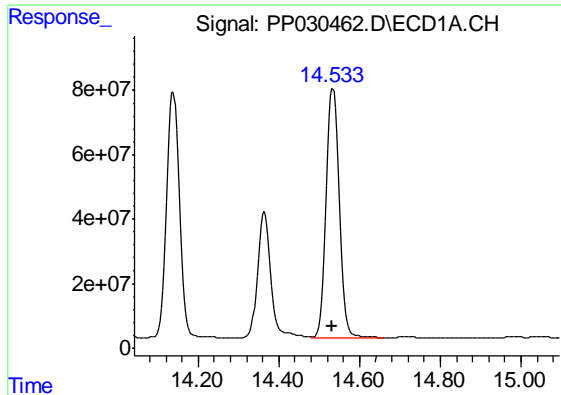
#10 Pentachlorophenol
 R.T.: 13.641 min
 Delta R.T.: 0.002 min
 Response: 845735934
 Conc: 253.06 ng/ml



#11 2,4,5-TP (SILVEX)
 R.T.: 14.138 min
 Delta R.T.: 0.002 min
 Response: 1639684943
 Conc: 820.75 ng/ml



#11 2,4,5-TP (SILVEX)
 R.T.: 14.243 min
 Delta R.T.: 0.000 min
 Response: 1030151051
 Conc: 838.00 ng/ml



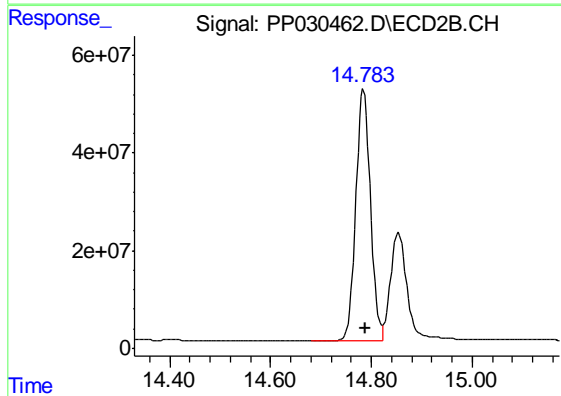
#12 2,4,5-T

R.T.: 14.534 min
 Delta R.T.: 0.001 min
 Response: 1693194701
 Conc: 872.30 ng/ml

Instrument :
 ECD_P
 ClientSampleId :
 HD-01-100919MS

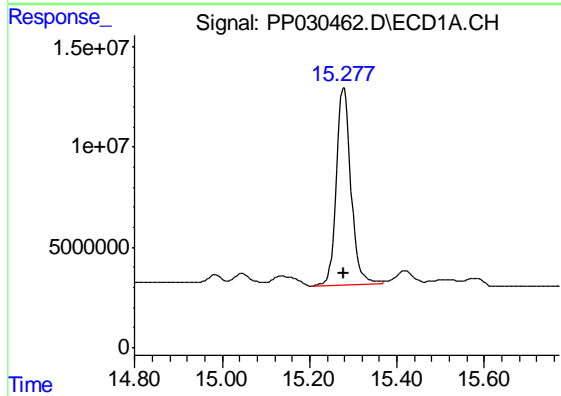
Manual Integrations
 APPROVED

Ankita
 10/15/2019 11:53:41 AM



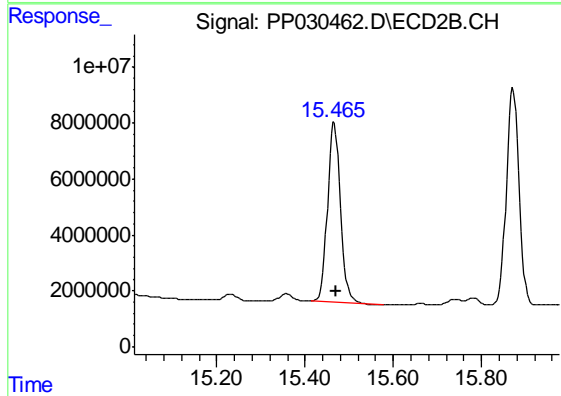
#12 2,4,5-T

R.T.: 14.785 min
 Delta R.T.: -0.003 min
 Response: 1041897515
 Conc: 992.23 ng/ml



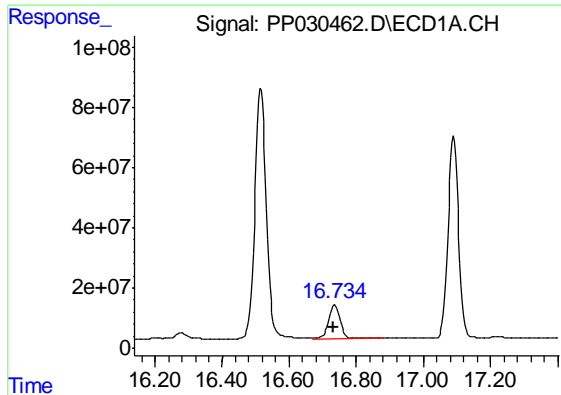
#13 2,4-DB

R.T.: 15.278 min
 Delta R.T.: 0.002 min
 Response: 227827161
 Conc: 895.00 ng/ml



#13 2,4-DB

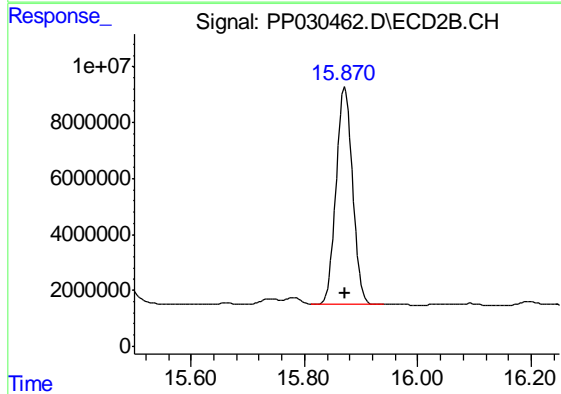
R.T.: 15.466 min
 Delta R.T.: -0.003 min
 Response: 131438532
 Conc: 924.49 ng/ml



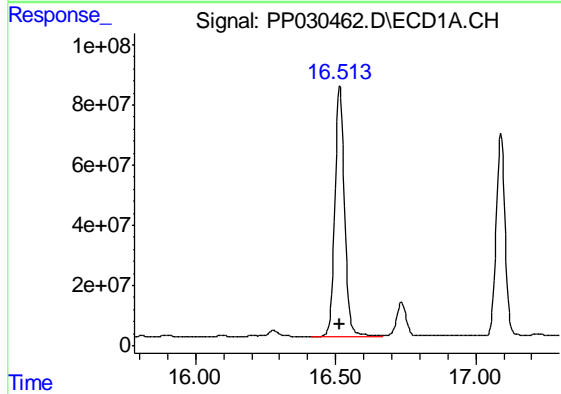
#14 DINOSEB
 R.T.: 16.736 min
 Delta R.T.: 0.003 min
 Response: 266985420
 Conc: 241.73 ng/ml

Instrument :
 ECD_P
 ClientSampleId :
 HD-01-100919MS

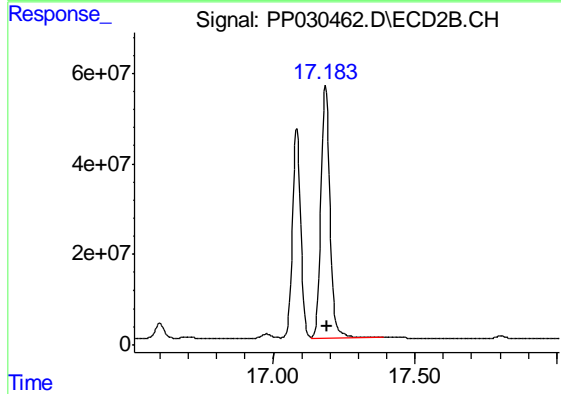
Manual Integrations
 APPROVED
 Ankita
 10/15/2019 11:53:41 AM



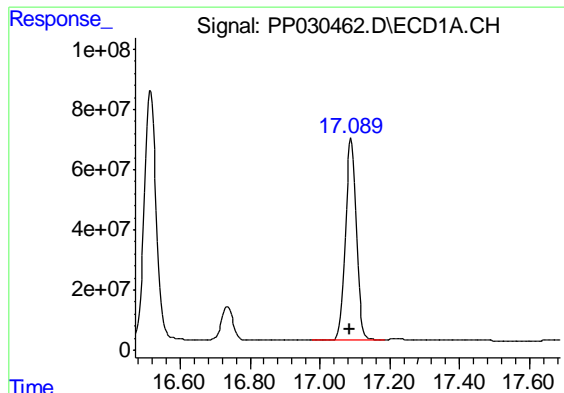
#14 DINOSEB
 R.T.: 15.871 min
 Delta R.T.: 0.000 min
 Response: 154985686
 Conc: 243.06 ng/ml



#15 Picloram
 R.T.: 16.515 min
 Delta R.T.: 0.000 min
 Response: 1986326784
 Conc: 867.96 ng/ml



#15 Picloram
 R.T.: 17.184 min
 Delta R.T.: -0.005 min
 Response: 1239039814
 Conc: 883.52 ng/ml



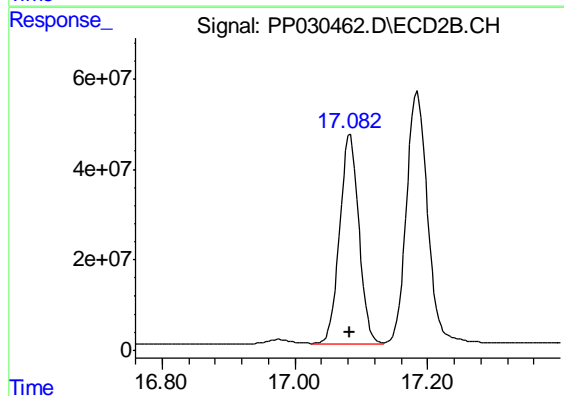
#16 DCPA

R.T.: 17.090 min
 Delta R.T.: 0.003 min
 Response: 1461477791
 Conc: 555.71 ng/ml

Instrument :
 ECD_P
 ClientSampleId :
 HD-01-100919MS

Manual Integrations
 APPROVED

Ankita
 10/15/2019 11:53:41 AM



#16 DCPA

R.T.: 17.083 min
 Delta R.T.: 0.000 min
 Response: 929159782
 Conc: 580.70 ng/ml