

Data Path : Z:\pestpcbsrv\HPCHEM1\ECD_P\Data\PP101419\
 Data File : PP030473.D
 Signal(s) : Signal #1: ECD1A.CH Signal #2: ECD2B.CH
 Acq On : 14 Oct 2019 16:55
 Operator : DD\AJ
 Sample : K5323-04
 Misc :
 ALS Vial : 14 Sample Multiplier: 1

Instrument :
 ECD_P
 ClientSampleId :
 TP-2

Integration File signal 1: autoint1.e
 Integration File signal 2: autoint2.e
 Quant Time: Oct 14 17:32:16 2019
 Quant Method : Z:\pestpcbsrv\HPCHEM1\ECD_P\methods\PP100919.M
 Quant Title : 8080.M
 QLast Update : Thu Oct 10 09:35:34 2019
 Response via : Initial Calibration
 Integrator: ChemStation 6890 Scale Mode: Large solvent peaks clipped

Volume Inj. : 2 µl
 Signal #1 Phase : ZB-CLPesticides-1 Signal #2 Phase: ZB-CLPesticides-2
 Signal #1 Info : 30M x 0.32mm x0.5 Signal #2 Info : 30M x 0.32mm x 0.25µm

Compound	RT#1	RT#2	Resp#1	Resp#2	ng/ml	ng/ml
----------	------	------	--------	--------	-------	-------

 System Monitoring Compounds

4) S	2,4-DCAA	11.034	11.188	149.8E6	84843554	414.245	386.078
------	----------	--------	--------	---------	----------	---------	---------

Target Compounds

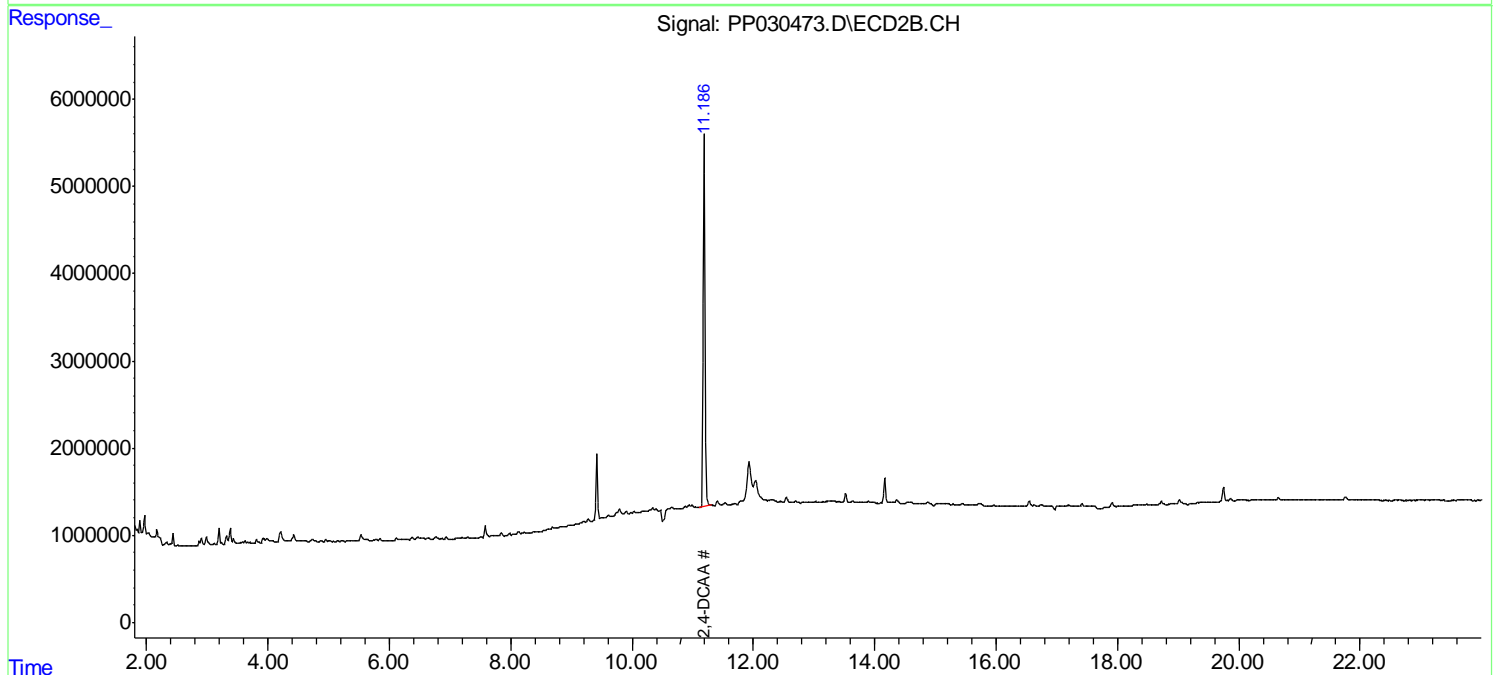
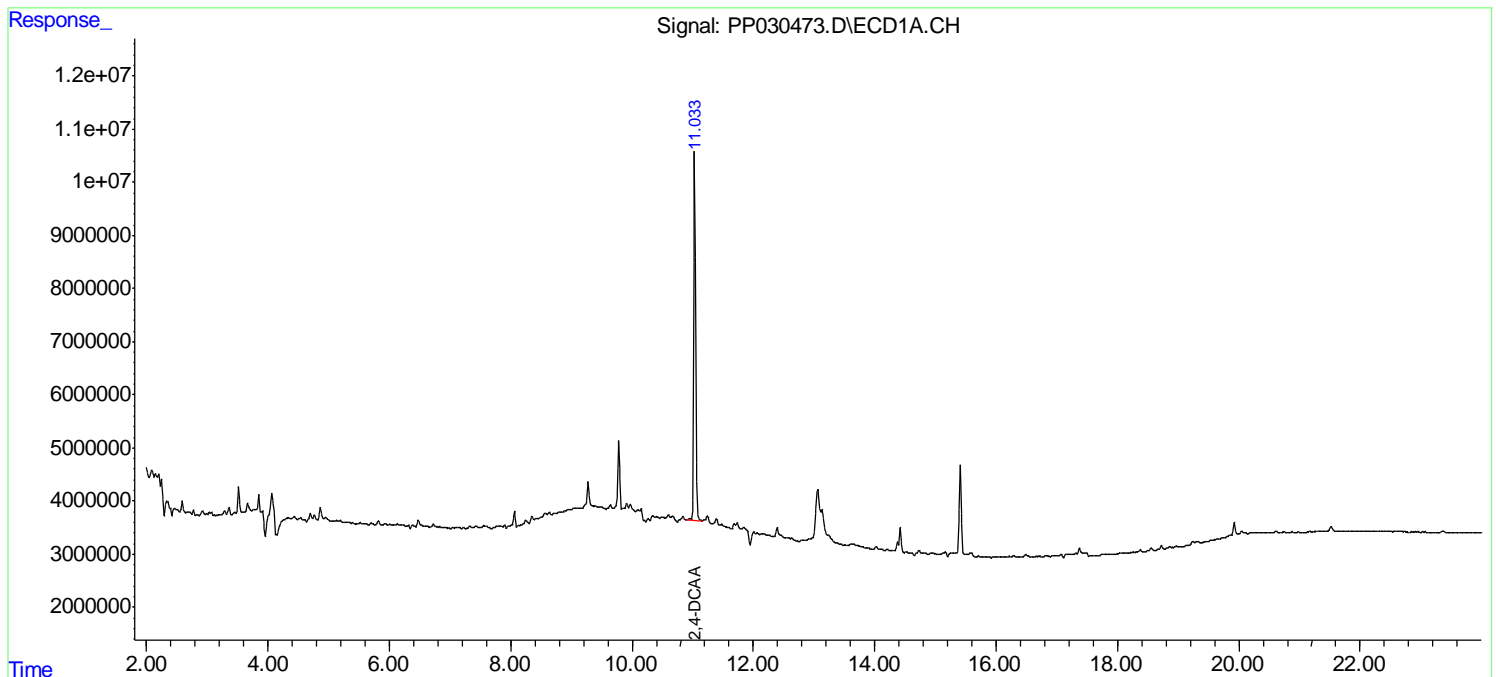
(f)=RT Delta > 1/2 Window (#)=Amounts differ by > 25% (m)=manual int.

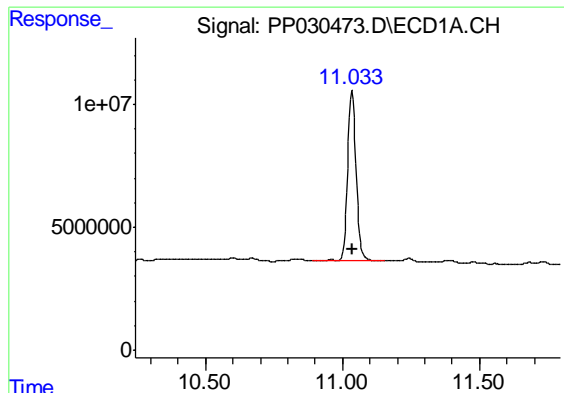
Data Path : Z:\pestpcbsrv\HPCHEM1\ECD_P\Data\PP101419\
Data File : PP030473.D
Signal(s) : Signal #1: ECD1A.CH Signal #2: ECD2B.CH
Acq On : 14 Oct 2019 16:55
Operator : DD\AJ
Sample : K5323-04
Misc :
ALS Vial : 14 Sample Multiplier: 1

Instrument :
ECD_P
ClientSampled :
TP-2

Integration File signal 1: autoint1.e
Integration File signal 2: autoint2.e
Quant Time: Oct 14 17:32:16 2019
Quant Method : Z:\pestpcbsrv\HPCHEM1\ECD_P\methods\PP100919.M
Quant Title : 8080.M
QLast Update : Thu Oct 10 09:35:34 2019
Response via : Initial Calibration
Integrator: ChemStation 6890 Scale Mode: Large solvent peaks clipped

Volume Inj. : 2 µl
Signal #1 Phase : ZB-CLPesticides-1 Signal #2 Phase: ZB-CLPesticides-2
Signal #1 Info : 30M x 0.32mm x0.5 Signal #2 Info : 30M x 0.32mm x 0.25µm

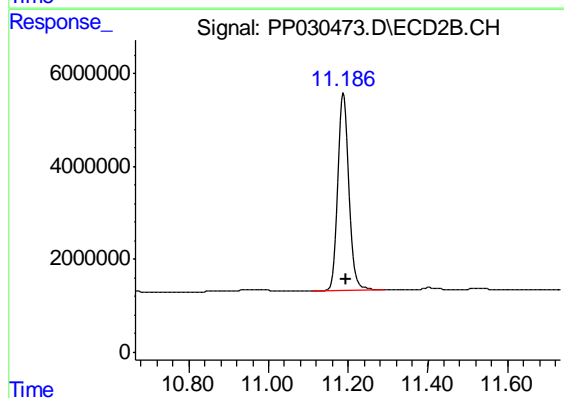




#4 2,4-DCAA

R.T.: 11.034 min
Delta R.T.: -0.003 min
Response: 149777531
Conc: 414.25 ng/ml

Instrument :
ECD_P
ClientSampleId :
TP-2



#4 2,4-DCAA

R.T.: 11.188 min
Delta R.T.: -0.005 min
Response: 84843554
Conc: 386.08 ng/ml