

Data Path : Z:\pestpcbsrv\HPCHEM1\ECD_P\Data\PP101421\
 Data File : PP040057.D
 Signal(s) : Signal #1: ECD1A.CH Signal #2: ECD2B.CH
 Acq On : 14 Oct 2021 13:52
 Operator : AJ\MA
 Sample : PB139885BL
 Misc :
 ALS Vial : 11 Sample Multiplier: 1

Instrument :
 ECD_P
 ClientSampleId :
 PB139885BL

Integration File signal 1: autoint1.e
 Integration File signal 2: autoint2.e
 Quant Time: Oct 14 16:02:40 2021
 Quant Method : Z:\pestpcbsrv\HPCHEM1\ECD_P\methods\PP101221.M
 Quant Title : GC EXTRACTABLES
 QLast Update : Wed Oct 13 08:03:59 2021
 Response via : Initial Calibration
 Integrator: ChemStation 6890 Scale Mode: Small noise peaks clipped

Volume Inj. : 2 µl
 Signal #1 Phase : ZB-MR1 Signal #2 Phase: ZB-MR2
 Signal #1 Info : 30Mx0.32mmx 0.50µ Signal #2 Info : 30M x 0.32mm x 0.25µm

Compound	RT#1	RT#2	Resp#1	Resp#2	ng/ml	ng/ml

System Monitoring Compounds						
1) SA Tetrachlo...	4.893	3.982	618663	360844	20.372	21.344
2) SA Decachlor...	10.912	9.310	540050	494543	21.850	23.302

Target Compounds

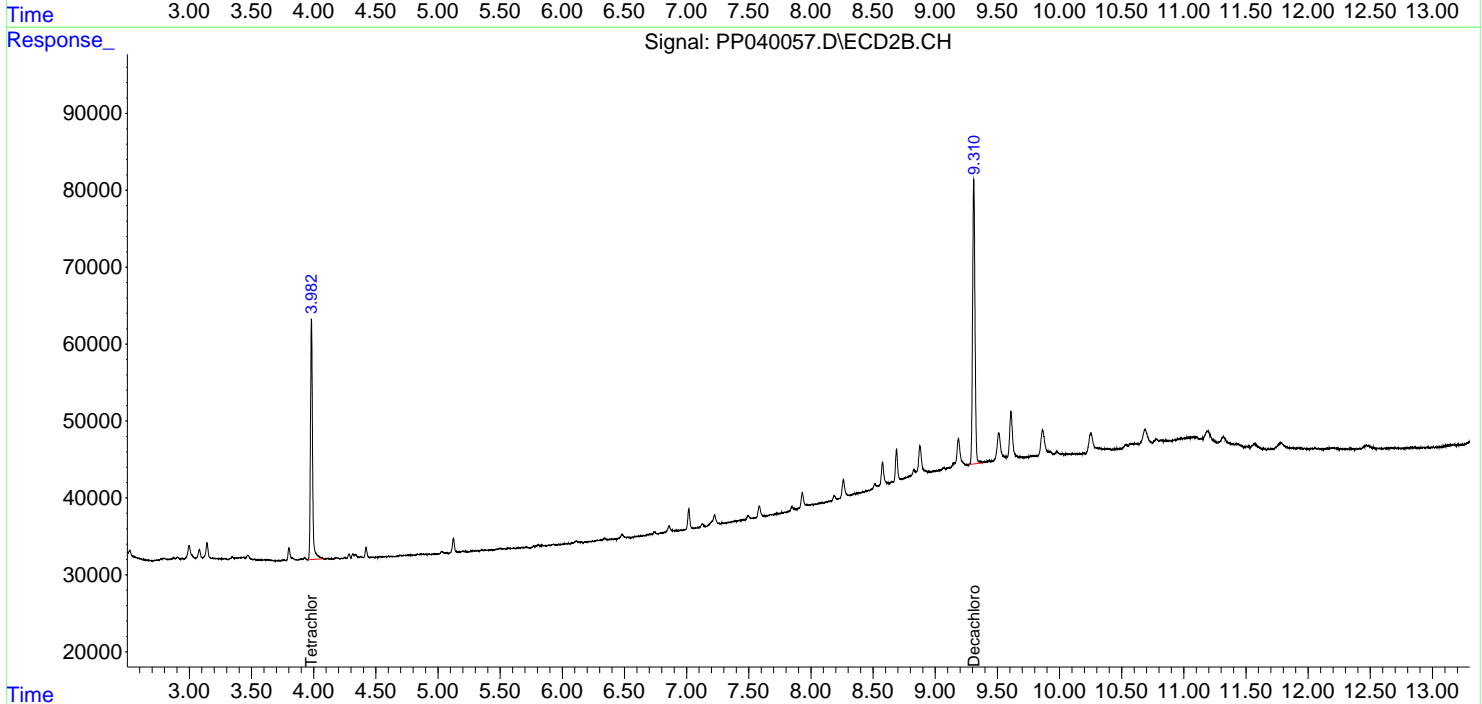
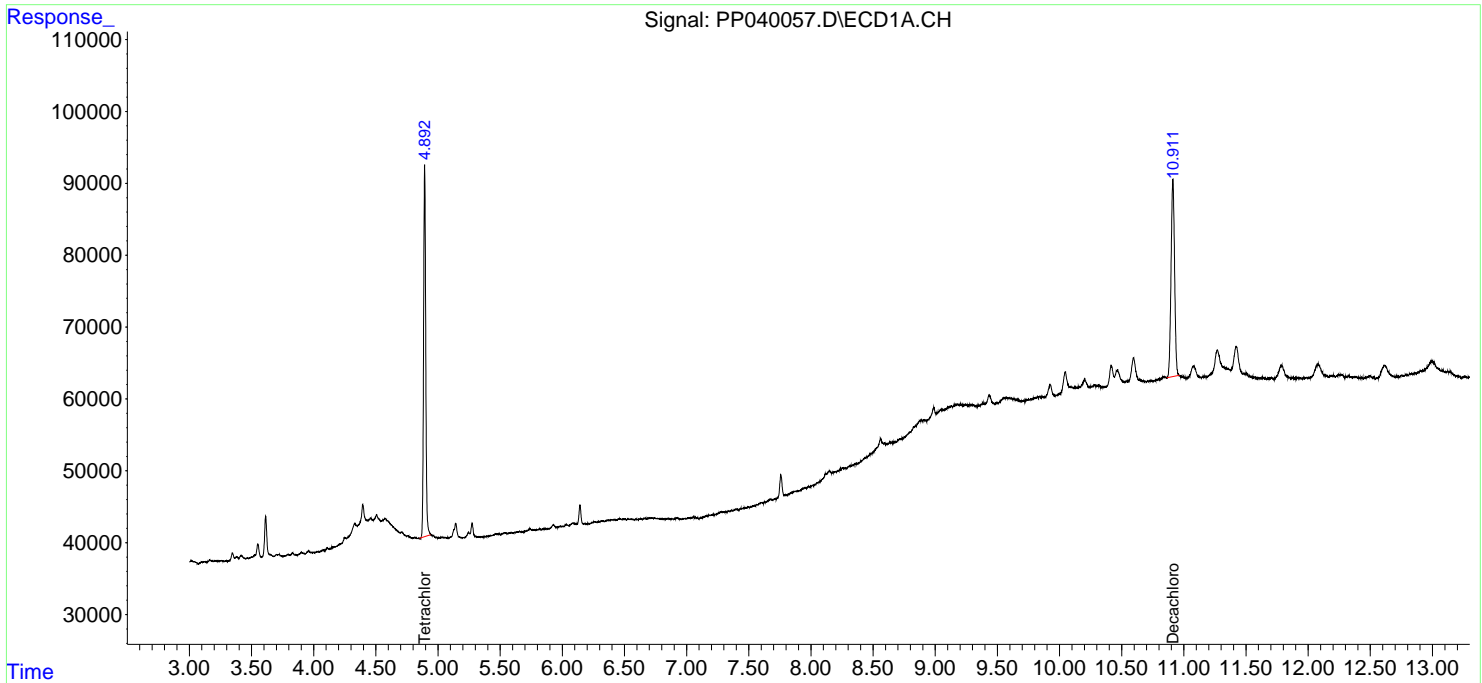
(f)=RT Delta > 1/2 Window (#)=Amounts differ by > 25% (m)=manual int.

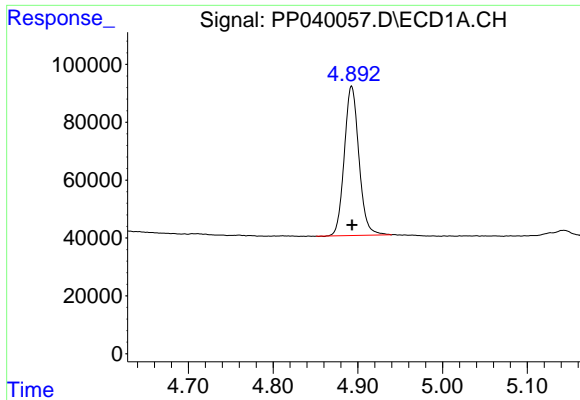
Data Path : Z:\pestpcbsrv\HPCHEM1\ECD_P\Data\PP101421\
 Data File : PP040057.D
 Signal(s) : Signal #1: ECD1A.CH Signal #2: ECD2B.CH
 Acq On : 14 Oct 2021 13:52
 Operator : AJ\MA
 Sample : PB139885BL
 Misc :
 ALS Vial : 11 Sample Multiplier: 1

Instrument :
 ECD_P
ClientSampled :
 PB139885BL

Integration File signal 1: autoint1.e
 Integration File signal 2: autoint2.e
 Quant Time: Oct 14 16:02:40 2021
 Quant Method : Z:\pestpcbsrv\HPCHEM1\ECD_P\methods\PP101221.M
 Quant Title : GC EXTRACTABLES
 QLast Update : Wed Oct 13 08:03:59 2021
 Response via : Initial Calibration
 Integrator: ChemStation 6890 Scale Mode: Small noise peaks clipped

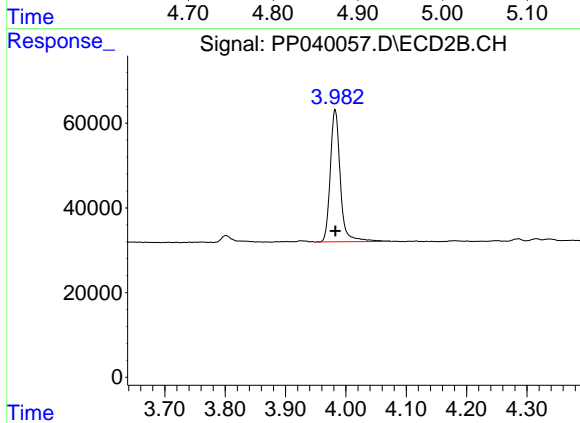
Volume Inj. : 2 µl
 Signal #1 Phase : ZB-MR1 Signal #2 Phase: ZB-MR2
 Signal #1 Info : 30Mx0.32mmx 0.50µ Signal #2 Info : 30M x 0.32mm x 0.25µm



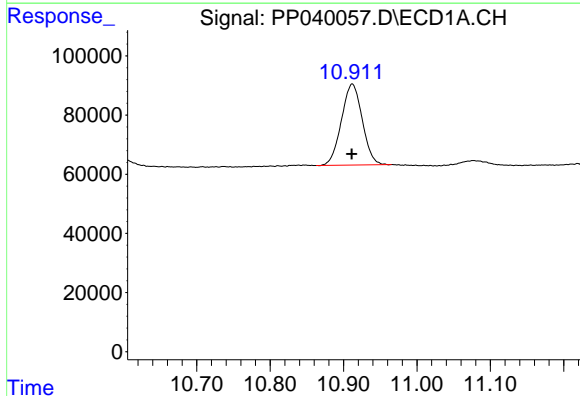


#1 Tetrachloro-m-xylene
 R.T.: 4.893 min
 Delta R.T.: 0.000 min
 Response: 618663
 Conc: 20.37 ng/ml

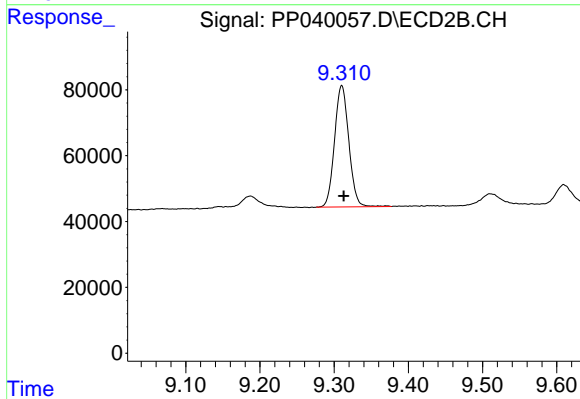
Instrument :
 ECD_P
 ClientSampleId :
 PB139885BL



#1 Tetrachloro-m-xylene
 R.T.: 3.982 min
 Delta R.T.: 0.000 min
 Response: 360844
 Conc: 21.34 ng/ml



#2 Decachlorobiphenyl
 R.T.: 10.912 min
 Delta R.T.: 0.000 min
 Response: 540050
 Conc: 21.85 ng/ml



#2 Decachlorobiphenyl
 R.T.: 9.310 min
 Delta R.T.: -0.003 min
 Response: 494543
 Conc: 23.30 ng/ml