

Data Path : Z:\pestpcbsrv\HPCHEM1\ECD_P\Data\PP101424\
 Data File : PP067802.D
 Signal(s) : Signal #1: ECD1A.ch Signal #2: ECD2B.ch
 Acq On : 14 Oct 2024 18:45
 Operator : YP\AJ
 Sample : P4391-26
 Misc :
 ALS Vial : 28 Sample Multiplier: 1

Instrument :
 ECD_P
 ClientSampleId :
 Q119-10A

Integration File signal 1: autoint1.e
 Integration File signal 2: autoint2.e
 Quant Time: Oct 15 01:56:40 2024
 Quant Method : Z:\pestpcbsrv\HPCHEM1\ECD_P\methods\PP100824.M
 Quant Title : GC EXTRACTABLES
 QLast Update : Wed Oct 09 05:48:32 2024
 Response via : Initial Calibration
 Integrator: ChemStation

Volume Inj. : 2 µl
 Signal #1 Phase : ZB-MR1 Signal #2 Phase: ZB-MR2
 Signal #1 Info : 30Mx0.32mmx 0.50µ Signal #2 Info : 30M x 0.32mm x 0.25µm

Compound	RT#1	RT#2	Resp#1	Resp#2	ng/ml	ng/ml
System Monitoring Compounds						
1) SA Tetrachlo...	4.755	4.052	17040418	18211976	18.409	18.024
2) SA Decachlor...	10.670	9.217	19510505	18257052	16.946	16.280
Target Compounds						
3) L1 AR-1016-1	5.877f	5.162	29927522	401497	905.066	11.476 #
4) L1 AR-1016-2	5.981f	5.162	6535335	401497	134.001	8.335 #
5) L1 AR-1016-3	6.015	5.363	1985427	5513475	63.006	204.677 #
6) L1 AR-1016-4	6.089	5.399	33785811	1333336	1312.395	55.359 #
7) L1 AR-1016-5	6.424	5.636	15894540	-1759966	587.232	N.D. #
8) L2 AR-1221-1	4.953	4.253	157410	284184	12.288	21.578 #
9) L2 AR-1221-2	5.064	4.366	352307	6308866	37.239	633.341 #
10) L2 AR-1221-3	5.155f	4.426	5608229	1794270	194.004	57.636 #
11) L3 AR-1232-1	5.155f	4.426	5608229	1794270	245.331	73.738 #
12) L3 AR-1232-2	5.647	5.162	12762195	401497	1083.099	17.952 #
13) L3 AR-1232-3	5.981f	5.363	6535335	5513475	293.393	461.618 #
14) L3 AR-1232-4	6.089	5.399f	33785811	1333336	2993.226	115.627 #
15) L3 AR-1232-5	6.208	5.636	4420727	-1759966	484.719	N.D. #
16) L4 AR-1242-1	5.877f	5.162	29927522	401497	1071.245	13.808 #
17) L4 AR-1242-2	5.981f	5.162	6535335	401497	160.831	10.000 #
18) L4 AR-1242-3	6.015	5.363	1985427	5513475	73.630	245.098 #
19) L4 AR-1242-4	6.089	5.399f	33785811	1333336	1575.061	56.170 #
20) L4 AR-1242-5	6.830	5.990	17814542	50936228	738.399	1777.906 #
21) L5 AR-1248-1	5.877f	5.162	29927522	401497	1396.989	17.715 #
22) L5 AR-1248-2	6.208	5.399	4420727	1333336	131.504	40.287 #
23) L5 AR-1248-3	6.368	5.399f	37105345	1333336	1013.102	38.676 #
24) L5 AR-1248-4	6.790	5.636	33962073	-1759966	839.591	N.D. #
25) L5 AR-1248-5	6.830	5.990	17814542	50936228	449.170	1360.362 #
26) L6 AR-1254-1	6.790	5.990	33962073	50936228	758.378	862.100
27) L6 AR-1254-2	7.009	6.130	30668995	6222966	463.995	118.614 #
28) L6 AR-1254-3	7.375	6.545	20416075	5779644	293.956	69.460 #
29) L6 AR-1254-4	7.621	6.761	13648293	152393	273.488	3.157 #
30) L6 AR-1254-5	8.072	7.179	18166126	16143927	306.380	219.492 #
31) L7 AR-1260-1	7.522	6.662	3186016	5172236	58.974	90.802 #
32) L7 AR-1260-2	7.781	6.850	50217593	5904171	793.693	88.512 #
33) L7 AR-1260-3	8.134	7.009	2310476	5949925	44.562	93.404 #
34) L7 AR-1260-4	8.358	7.483	6205636	4292506	103.093	77.632
35) L7 AR-1260-5	8.712	7.721	2943199	3092707	27.325	25.288
36) L8 AR-1262-1	8.358	7.218	6205636	3291049	86.464	41.832 #
37) L8 AR-1262-2	8.712	7.483	2943199	4292506	24.208	60.490 #
38) L8 AR-1262-3	9.061	8.008	3033956	704803	34.276	12.343 #
39) L8 AR-1262-4	9.133	8.069	1678319	2445254	23.995	24.346
40) L8 AR-1262-5	9.845	8.600	972892	689931	20.792	13.794 #
41) L9 AR-1268-1	9.061	8.008	3033956	704803	19.875	4.429 #

Data Path : Z:\pestpcbsrv\HPCHEM1\ECD_P\Data\PP101424\
 Data File : PP067802.D
 Signal(s) : Signal #1: ECD1A.ch Signal #2: ECD2B.ch
 Acq On : 14 Oct 2024 18:45
 Operator : YP\AJ
 Sample : P4391-26
 Misc :
 ALS Vial : 28 Sample Multiplier: 1

Instrument :
 ECD_P
 ClientSampleId :
 Q119-10A

Integration File signal 1: autoint1.e
 Integration File signal 2: autoint2.e
 Quant Time: Oct 15 01:56:40 2024
 Quant Method : Z:\pestpcbsrv\HPCHEM1\ECD_P\methods\PP100824.M
 Quant Title : GC EXTRACTABLES
 QLast Update : Wed Oct 09 05:48:32 2024
 Response via : Initial Calibration
 Integrator: ChemStation

Volume Inj. : 2 µl
 Signal #1 Phase : ZB-MR1 Signal #2 Phase: ZB-MR2
 Signal #1 Info : 30Mx0.32mmx 0.50µ Signal #2 Info : 30M x 0.32mm x 0.25µm

	Compound	RT#1	RT#2	Resp#1	Resp#2	ng/ml	ng/ml
42)	L9 AR-1268-2	9.133	8.069	1678319	2445254	12.287	17.077 #
43)	L9 AR-1268-3	9.396	8.290	1108591	2299790	9.168	18.036 #
44)	L9 AR-1268-4	9.845	8.600	972892	689931	19.144	12.216 #
45)	L9 AR-1268-5	10.297	8.926	735297	1072440	1.969	2.837 #

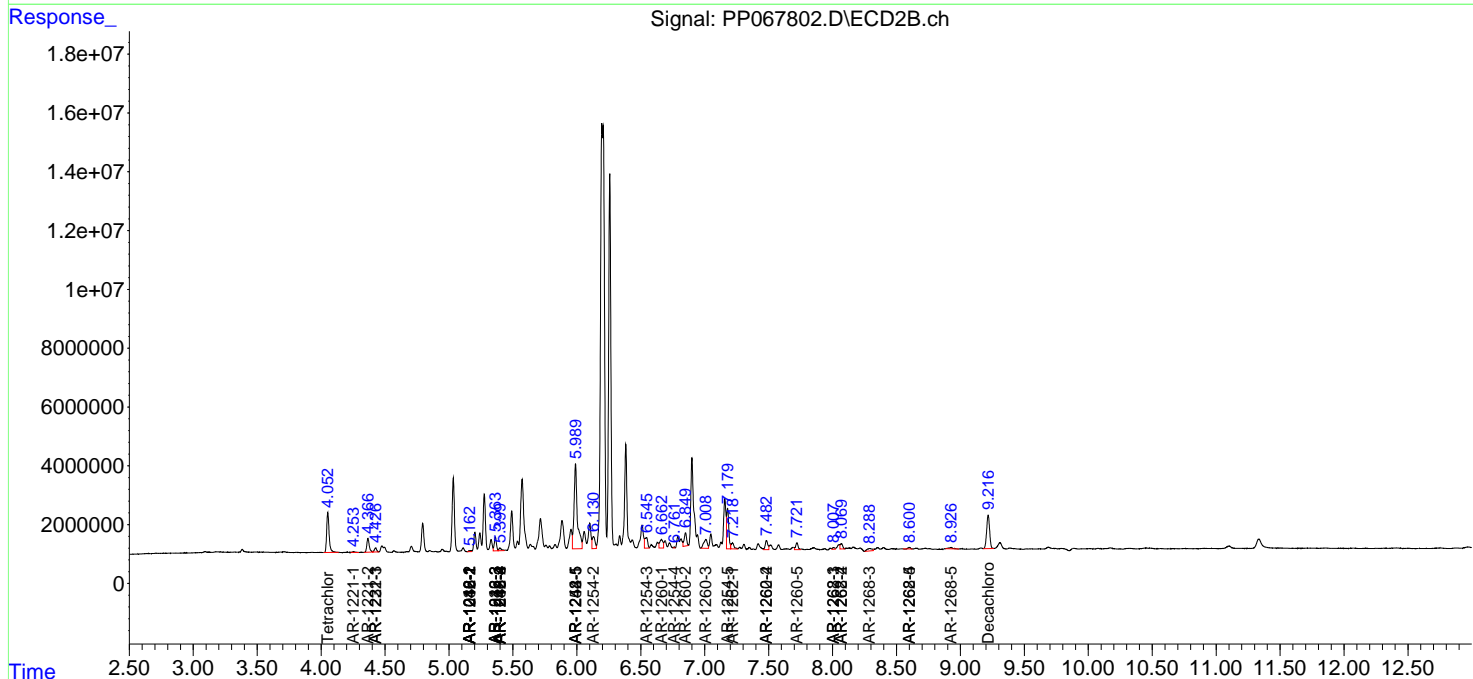
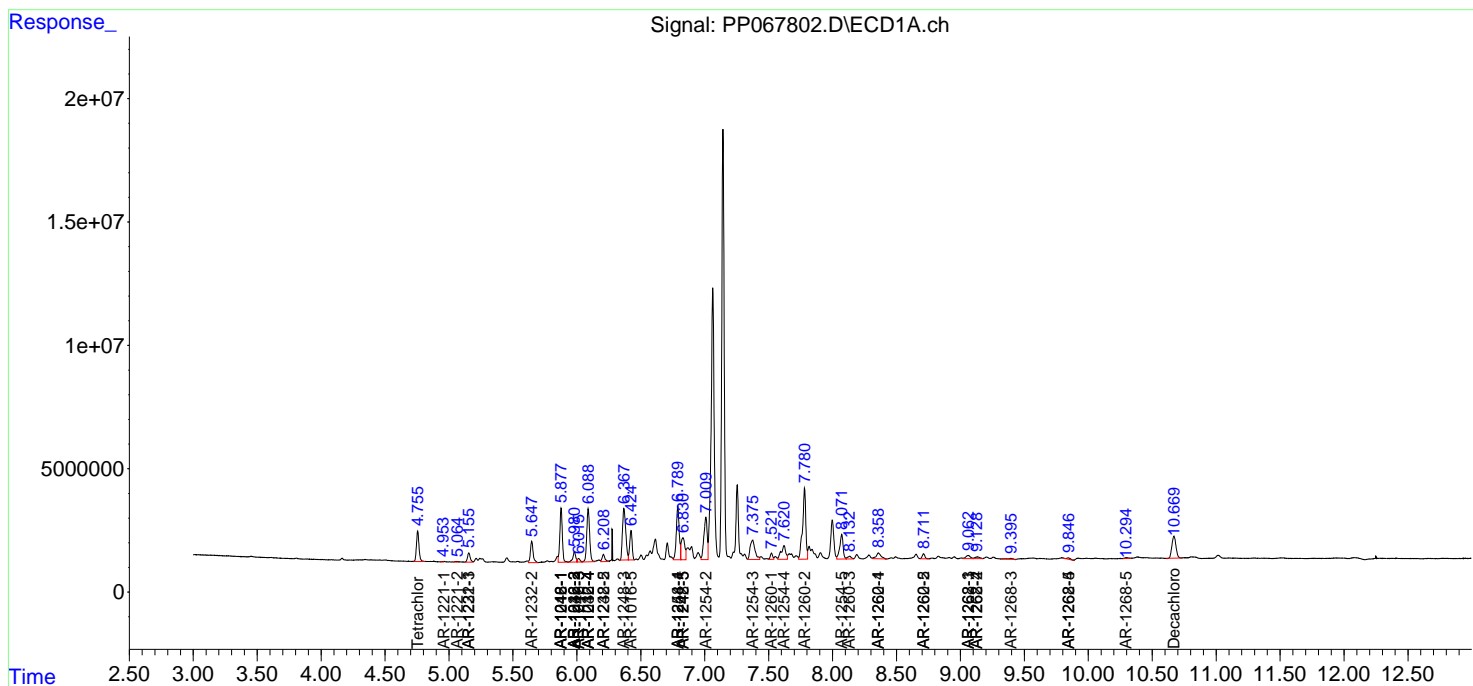
(f)=RT Delta > 1/2 Window (#)=Amounts differ by > 25% (m)=manual int.

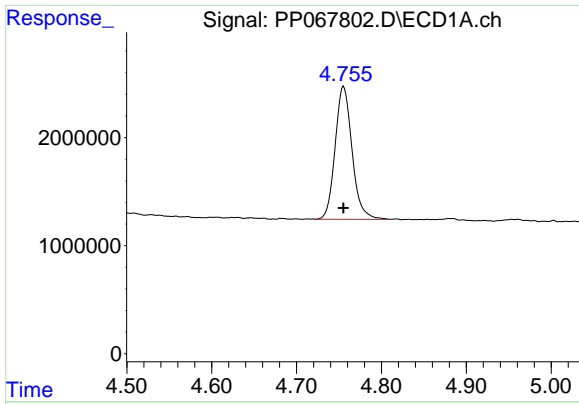
Data Path : Z:\pestpcbsrv\HPCHEM1\ECD_P\Data\PP101424\
 Data File : PP067802.D
 Signal(s) : Signal #1: ECD1A.ch Signal #2: ECD2B.ch
 Acq On : 14 Oct 2024 18:45
 Operator : YP\AJ
 Sample : P4391-26
 Misc :
 ALS Vial : 28 Sample Multiplier: 1

Instrument :
 ECD_P
 ClientSampleId :
 Q119-10A

Integration File signal 1: autoint1.e
 Integration File signal 2: autoint2.e
 Quant Time: Oct 15 01:56:40 2024
 Quant Method : Z:\pestpcbsrv\HPCHEM1\ECD_P\methods\PP100824.M
 Quant Title : GC EXTRACTABLES
 QLast Update : Wed Oct 09 05:48:32 2024
 Response via : Initial Calibration
 Integrator: ChemStation

Volume Inj. : 2 µl
 Signal #1 Phase : ZB-MR1 Signal #2 Phase: ZB-MR2
 Signal #1 Info : 30Mx0.32mmx 0.50µ Signal #2 Info : 30M x 0.32mm x 0.25µm

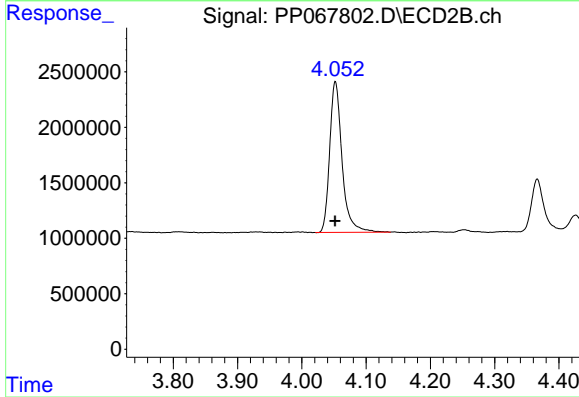




#1 Tetrachloro-m-xylene

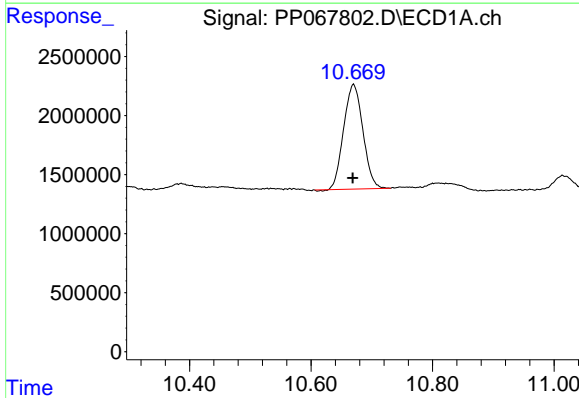
R.T.: 4.755 min
 Delta R.T.: 0.000 min
 Response: 17040418
 Conc: 18.41 ng/ml

Instrument :
 ECD_P
 ClientSampleId :
 Q119-10A



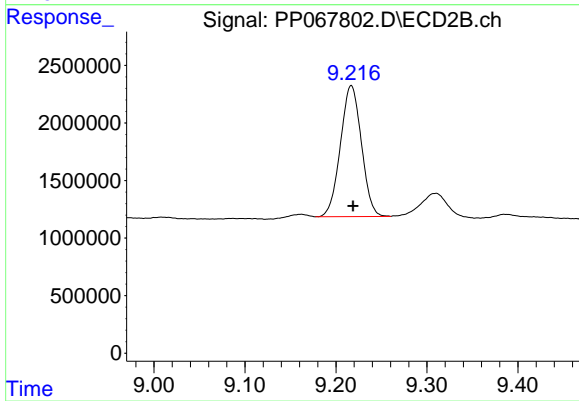
#1 Tetrachloro-m-xylene

R.T.: 4.052 min
 Delta R.T.: 0.000 min
 Response: 18211976
 Conc: 18.02 ng/ml



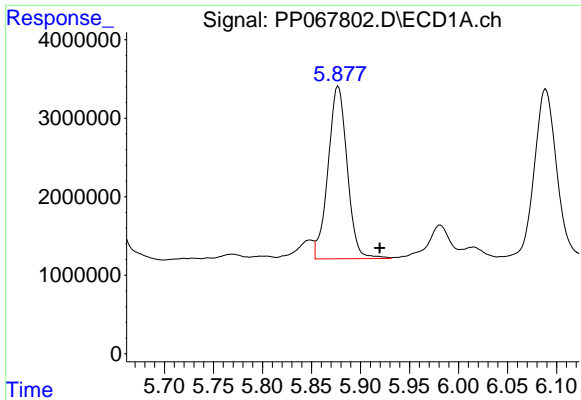
#2 Decachlorobiphenyl

R.T.: 10.670 min
 Delta R.T.: 0.001 min
 Response: 19510505
 Conc: 16.95 ng/ml



#2 Decachlorobiphenyl

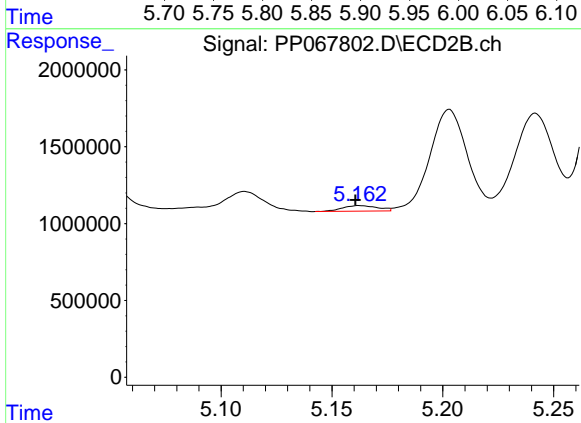
R.T.: 9.217 min
 Delta R.T.: -0.002 min
 Response: 18257052
 Conc: 16.28 ng/ml



#3 AR-1016-1

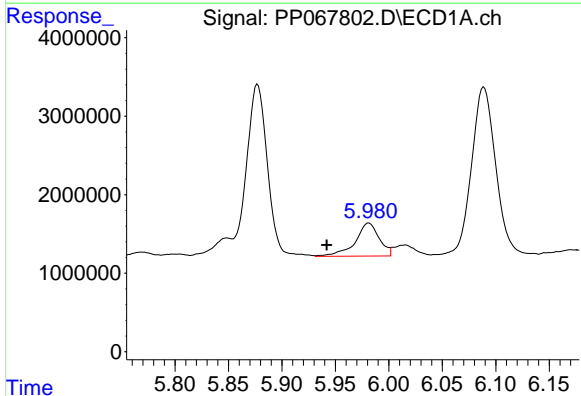
R.T.: 5.877 min
 Delta R.T.: -0.042 min
 Response: 29927522
 Conc: 905.07 ng/ml

Instrument :
 ECD_P
 ClientSampleId :
 Q119-10A



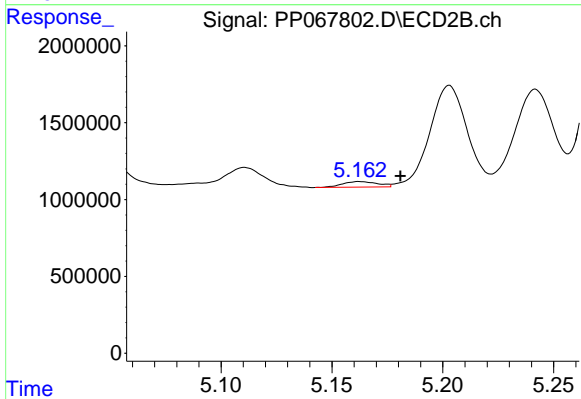
#3 AR-1016-1

R.T.: 5.162 min
 Delta R.T.: 0.002 min
 Response: 401497
 Conc: 11.48 ng/ml



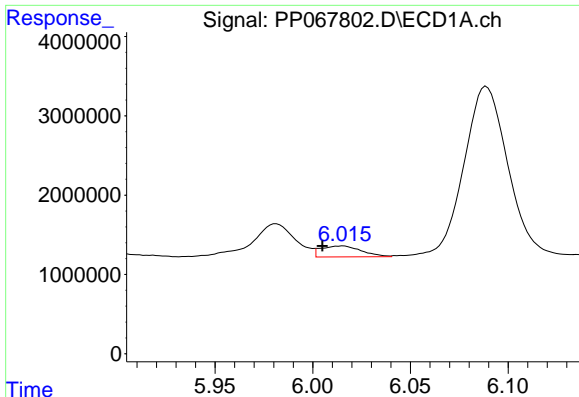
#4 AR-1016-2

R.T.: 5.981 min
 Delta R.T.: 0.039 min
 Response: 6535335
 Conc: 134.00 ng/ml



#4 AR-1016-2

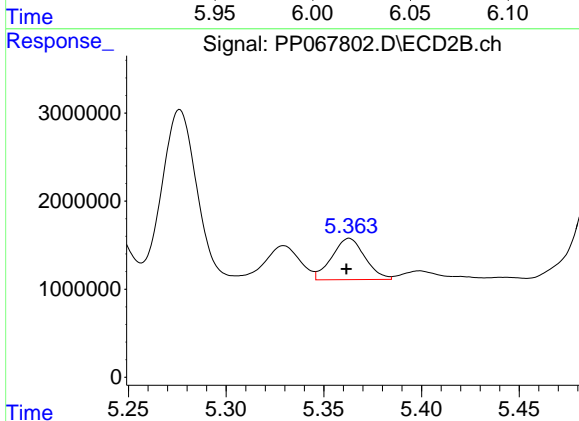
R.T.: 5.162 min
 Delta R.T.: -0.018 min
 Response: 401497
 Conc: 8.34 ng/ml



#5 AR-1016-3

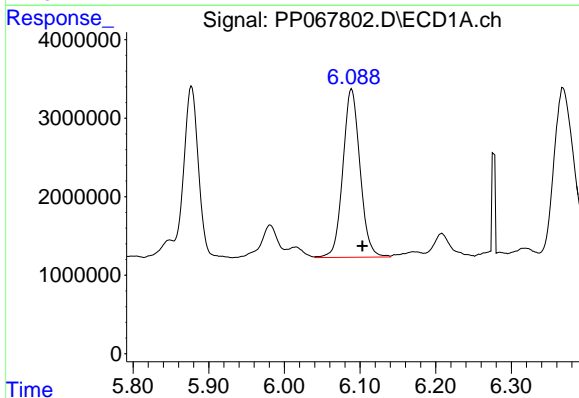
R.T.: 6.015 min
 Delta R.T.: 0.010 min
 Response: 1985427
 Conc: 63.01 ng/ml

Instrument :
 ECD_P
 ClientSampleId :
 Q119-10A



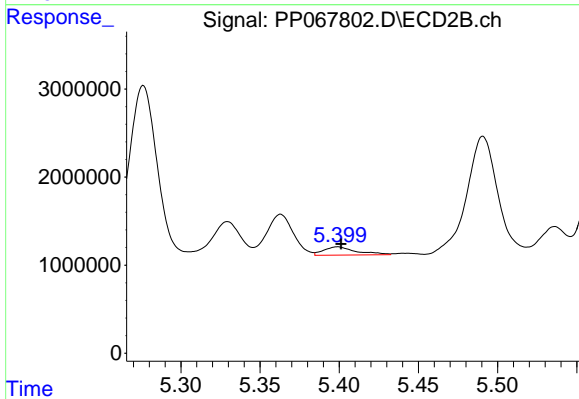
#5 AR-1016-3

R.T.: 5.363 min
 Delta R.T.: 0.001 min
 Response: 5513475
 Conc: 204.68 ng/ml



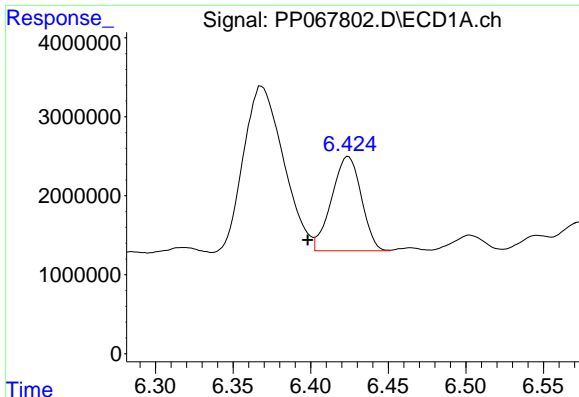
#6 AR-1016-4

R.T.: 6.089 min
 Delta R.T.: -0.014 min
 Response: 33785811
 Conc: 1312.39 ng/ml



#6 AR-1016-4

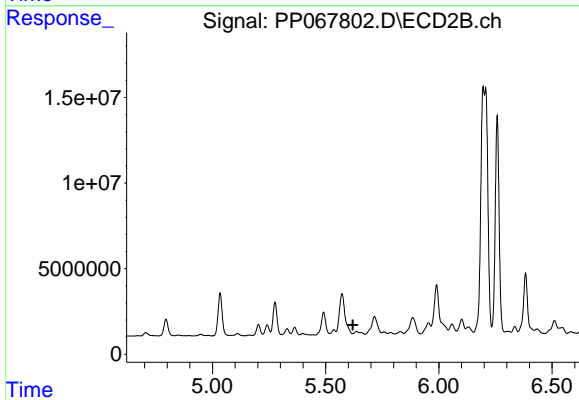
R.T.: 5.399 min
 Delta R.T.: -0.002 min
 Response: 1333336
 Conc: 55.36 ng/ml



#7 AR-1016-5

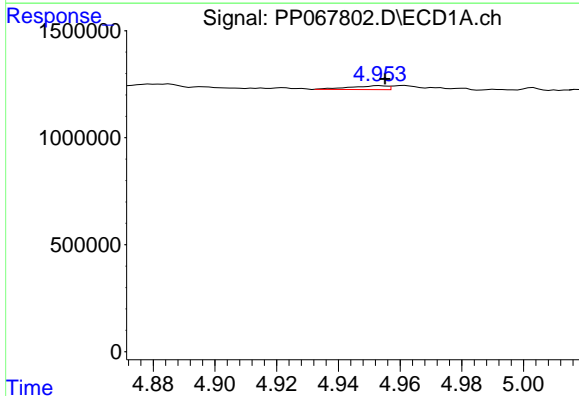
R.T.: 6.424 min
 Delta R.T.: 0.026 min
 Response: 15894540
 Conc: 587.23 ng/ml

Instrument :
 ECD_P
 ClientSampleId :
 Q119-10A



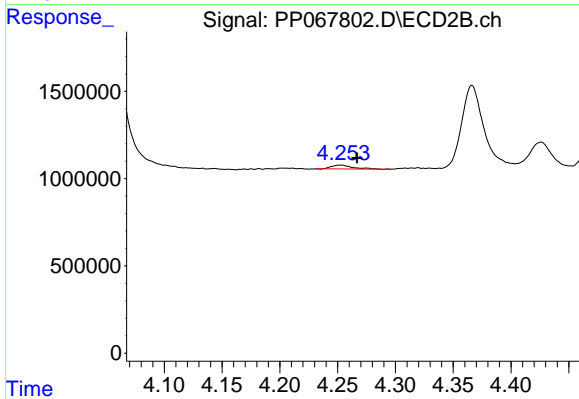
#7 AR-1016-5

R.T.: 5.636 min
 Delta R.T.: 0.016 min
 Response: -1759966
 Conc: N.D.



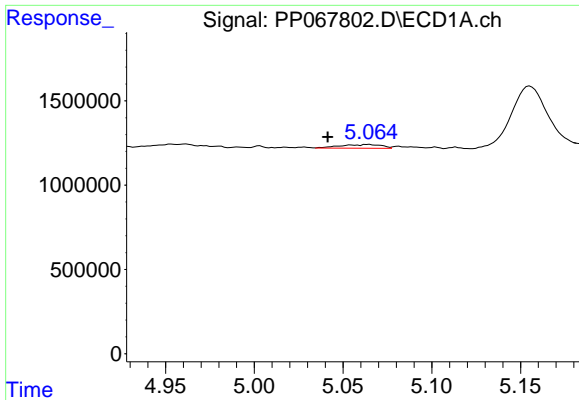
#8 AR-1221-1

R.T.: 4.953 min
 Delta R.T.: -0.002 min
 Response: 157410
 Conc: 12.29 ng/ml



#8 AR-1221-1

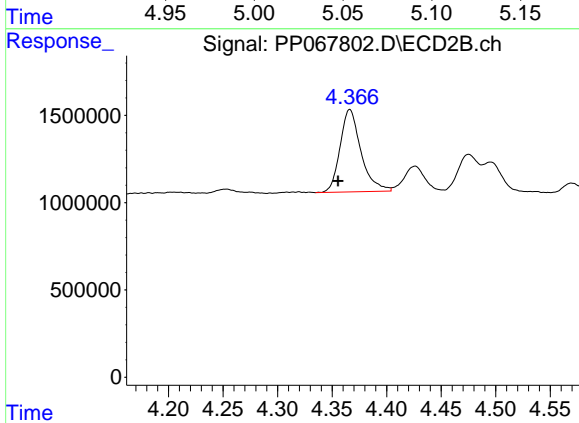
R.T.: 4.253 min
 Delta R.T.: -0.014 min
 Response: 284184
 Conc: 21.58 ng/ml



#9 AR-1221-2

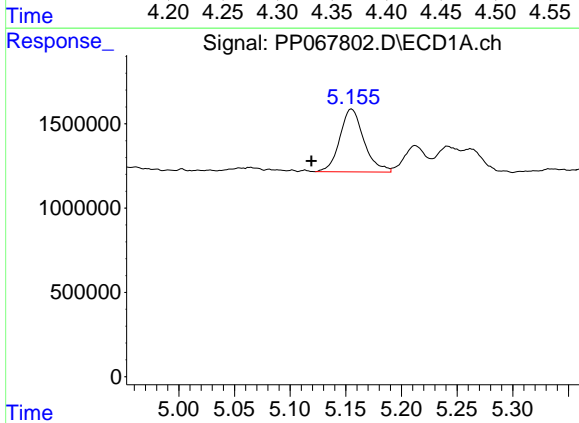
R.T.: 5.064 min
 Delta R.T.: 0.023 min
 Response: 352307
 Conc: 37.24 ng/ml

Instrument :
 ECD_P
 ClientSampleId :
 Q119-10A



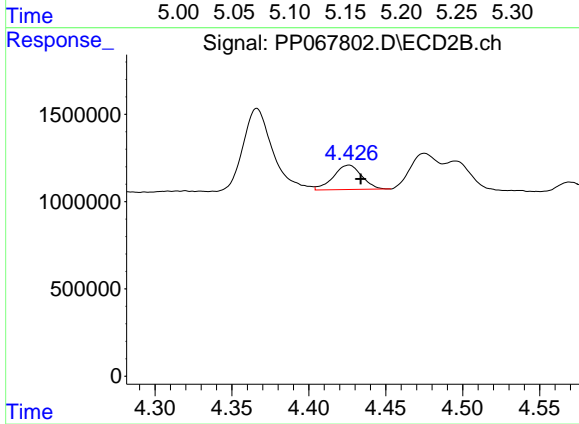
#9 AR-1221-2

R.T.: 4.366 min
 Delta R.T.: 0.011 min
 Response: 6308866
 Conc: 633.34 ng/ml



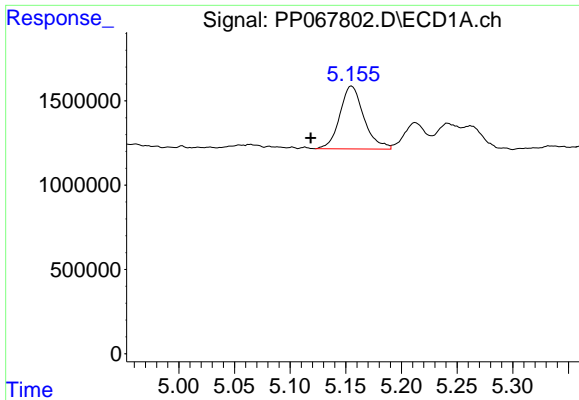
#10 AR-1221-3

R.T.: 5.155 min
 Delta R.T.: 0.036 min
 Response: 5608229
 Conc: 194.00 ng/ml



#10 AR-1221-3

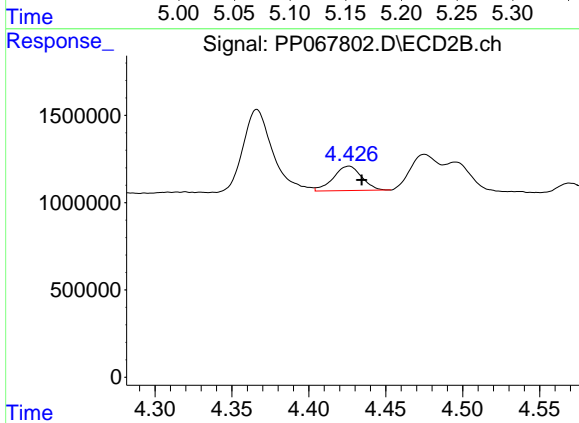
R.T.: 4.426 min
 Delta R.T.: -0.008 min
 Response: 1794270
 Conc: 57.64 ng/ml



#11 AR-1232-1

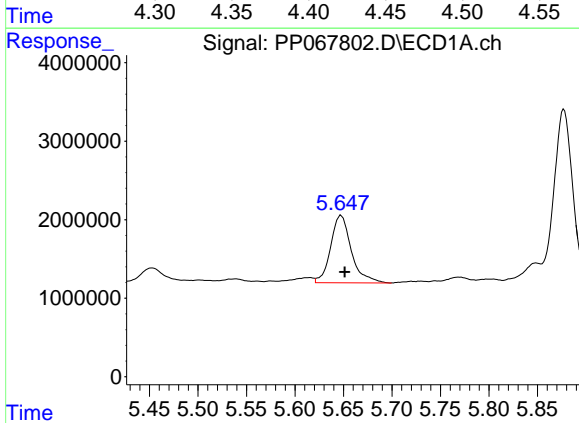
R.T.: 5.155 min
 Delta R.T.: 0.037 min
 Response: 5608229
 Conc: 245.33 ng/ml

Instrument :
 ECD_P
 ClientSampleId :
 Q119-10A



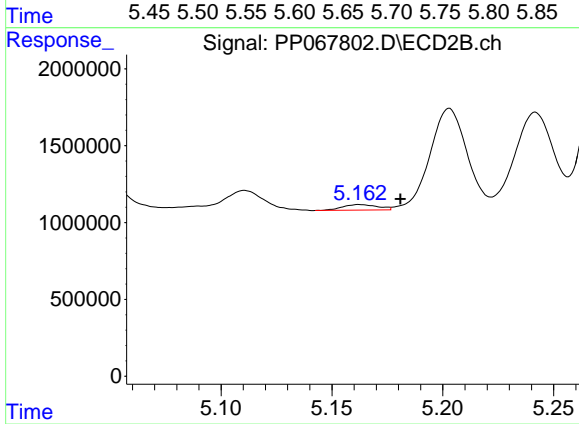
#11 AR-1232-1

R.T.: 4.426 min
 Delta R.T.: -0.008 min
 Response: 1794270
 Conc: 73.74 ng/ml



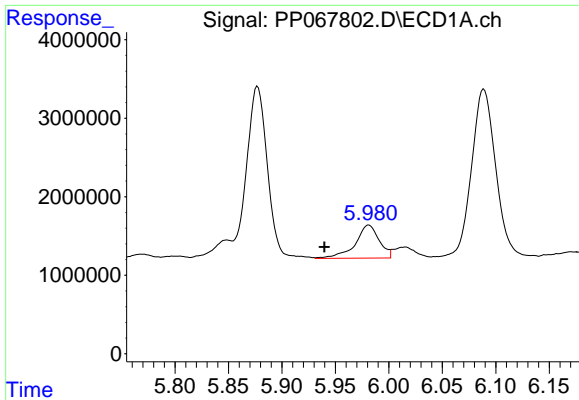
#12 AR-1232-2

R.T.: 5.647 min
 Delta R.T.: -0.004 min
 Response: 12762195
 Conc: 1083.10 ng/ml



#12 AR-1232-2

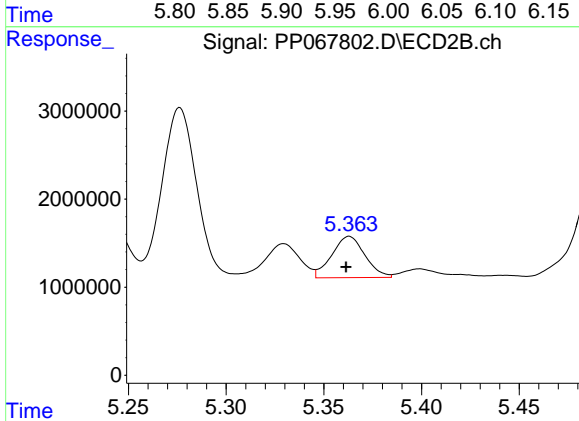
R.T.: 5.162 min
 Delta R.T.: -0.019 min
 Response: 401497
 Conc: 17.95 ng/ml



#13 AR-1232-3

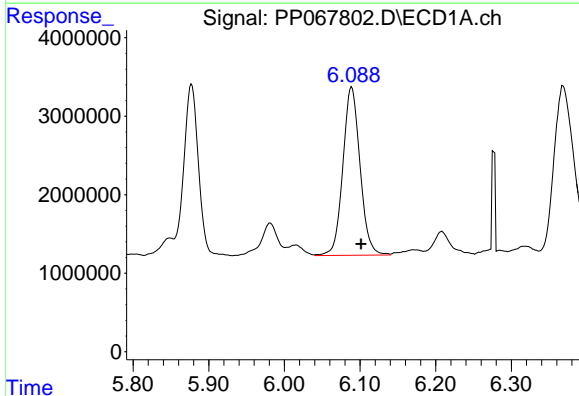
R.T.: 5.981 min
 Delta R.T.: 0.041 min
 Response: 6535335
 Conc: 293.39 ng/ml

Instrument :
 ECD_P
 ClientSampleId :
 Q119-10A



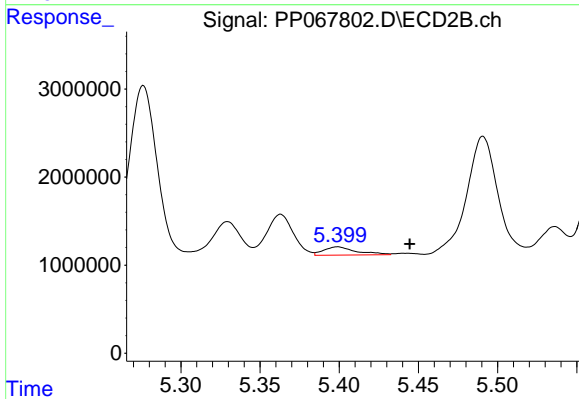
#13 AR-1232-3

R.T.: 5.363 min
 Delta R.T.: 0.002 min
 Response: 5513475
 Conc: 461.62 ng/ml



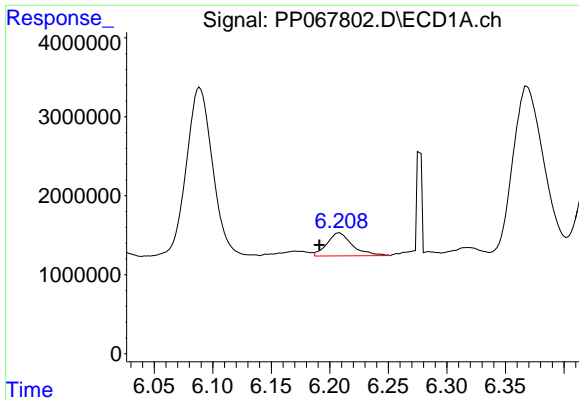
#14 AR-1232-4

R.T.: 6.089 min
 Delta R.T.: -0.013 min
 Response: 33785811
 Conc: 2993.23 ng/ml



#14 AR-1232-4

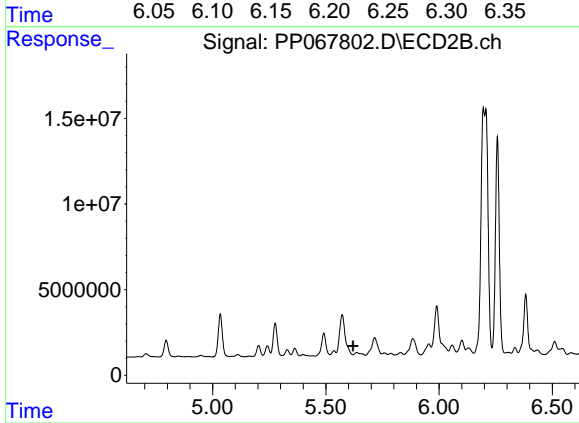
R.T.: 5.399 min
 Delta R.T.: -0.046 min
 Response: 1333336
 Conc: 115.63 ng/ml



#15 AR-1232-5

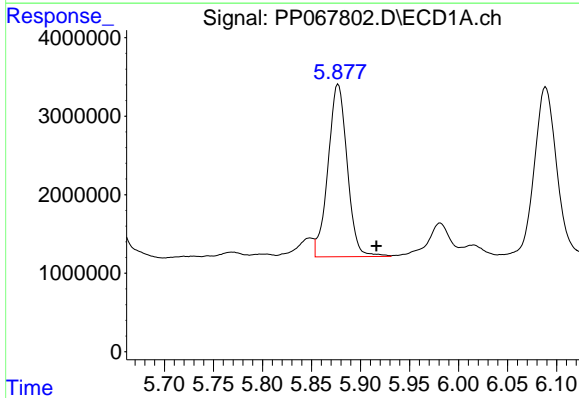
R.T.: 6.208 min
 Delta R.T.: 0.017 min
 Response: 4420727
 Conc: 484.72 ng/ml

Instrument :
 ECD_P
 ClientSampleId :
 Q119-10A



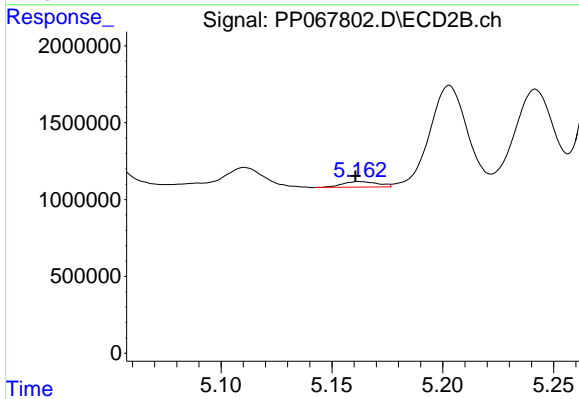
#15 AR-1232-5

R.T.: 5.636 min
 Delta R.T.: 0.017 min
 Response: -1759966
 Conc: N.D.



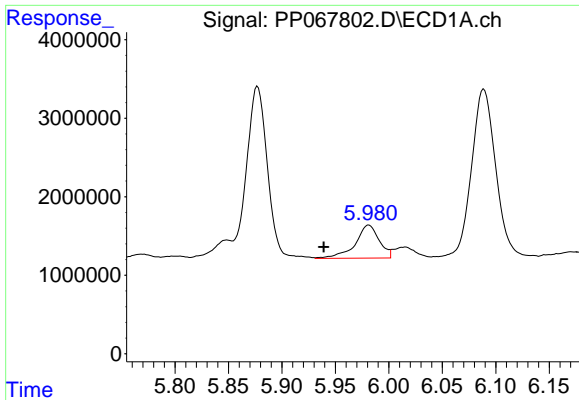
#16 AR-1242-1

R.T.: 5.877 min
 Delta R.T.: -0.039 min
 Response: 29927522
 Conc: 1071.25 ng/ml



#16 AR-1242-1

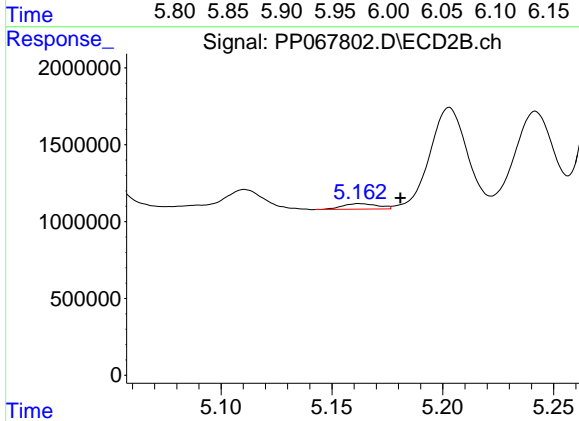
R.T.: 5.162 min
 Delta R.T.: 0.002 min
 Response: 401497
 Conc: 13.81 ng/ml



#17 AR-1242-2

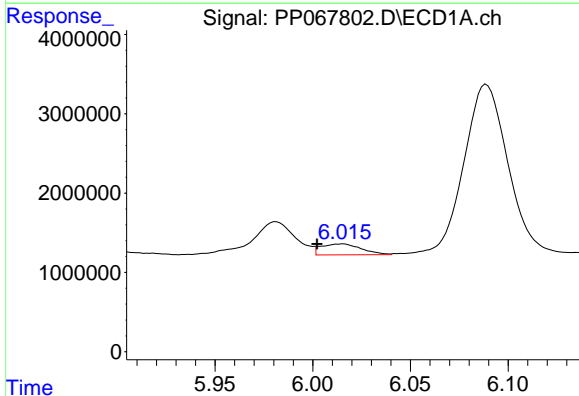
R.T.: 5.981 min
 Delta R.T.: 0.042 min
 Response: 6535335
 Conc: 160.83 ng/ml

Instrument :
 ECD_P
 ClientSampleId :
 Q119-10A



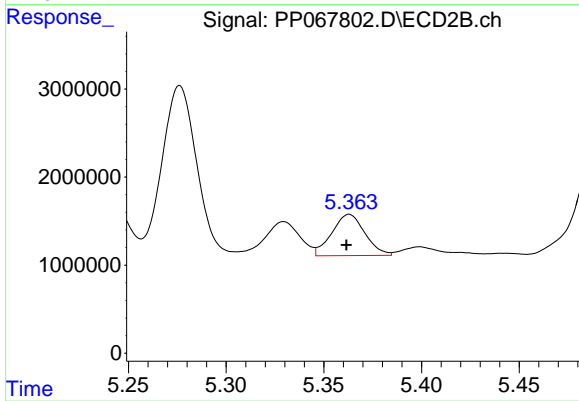
#17 AR-1242-2

R.T.: 5.162 min
 Delta R.T.: -0.019 min
 Response: 401497
 Conc: 10.00 ng/ml



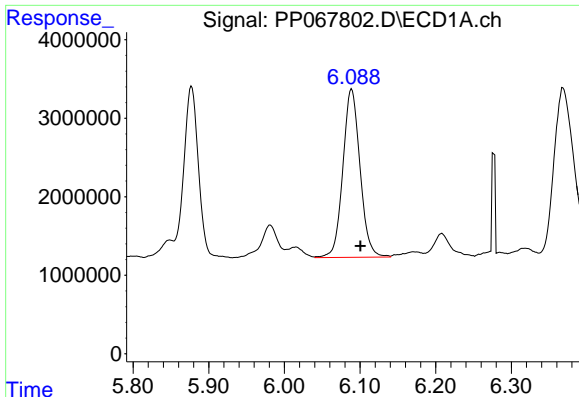
#18 AR-1242-3

R.T.: 6.015 min
 Delta R.T.: 0.013 min
 Response: 1985427
 Conc: 73.63 ng/ml



#18 AR-1242-3

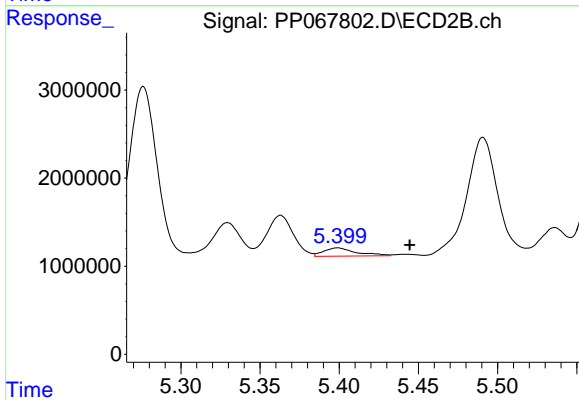
R.T.: 5.363 min
 Delta R.T.: 0.001 min
 Response: 5513475
 Conc: 245.10 ng/ml



#19 AR-1242-4

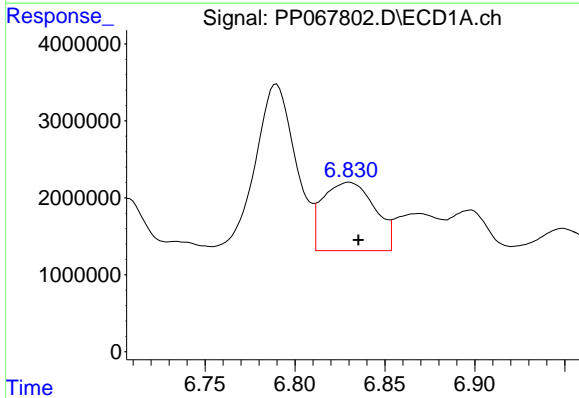
R.T.: 6.089 min
 Delta R.T.: -0.012 min
 Response: 33785811
 Conc: 1575.06 ng/ml

Instrument :
 ECD_P
 ClientSampleId :
 Q119-10A



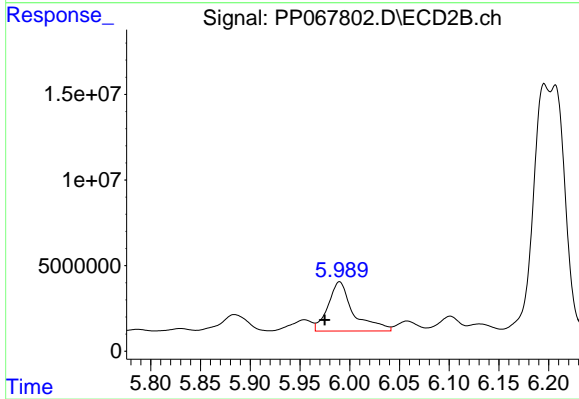
#19 AR-1242-4

R.T.: 5.399 min
 Delta R.T.: -0.046 min
 Response: 1333336
 Conc: 56.17 ng/ml



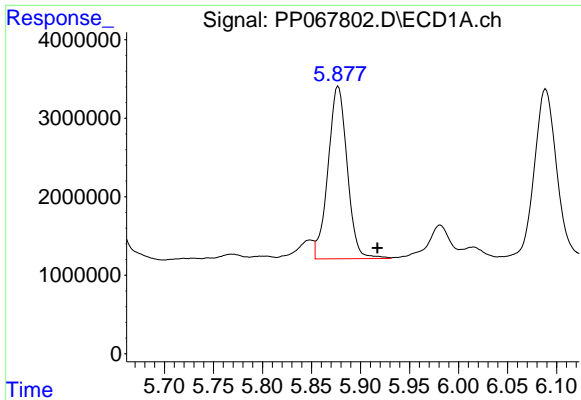
#20 AR-1242-5

R.T.: 6.830 min
 Delta R.T.: -0.005 min
 Response: 17814542
 Conc: 738.40 ng/ml



#20 AR-1242-5

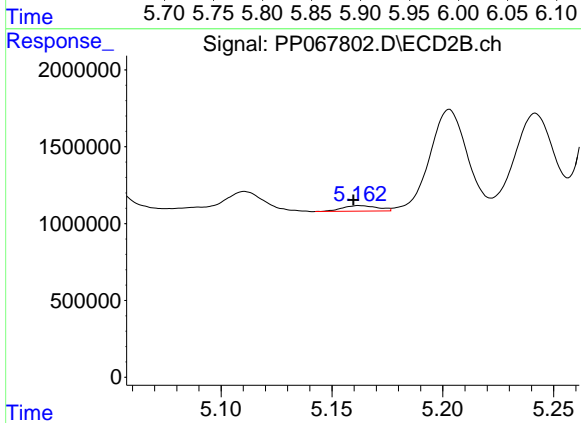
R.T.: 5.990 min
 Delta R.T.: 0.015 min
 Response: 50936228
 Conc: 1777.91 ng/ml



#21 AR-1248-1

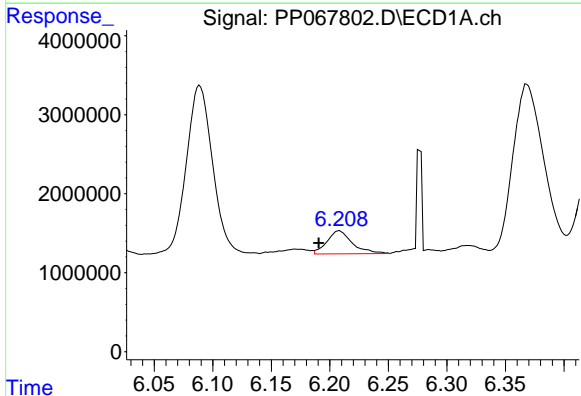
R.T.: 5.877 min
 Delta R.T.: -0.040 min
 Response: 29927522
 Conc: 1396.99 ng/ml

Instrument :
 ECD_P
 ClientSampleId :
 Q119-10A



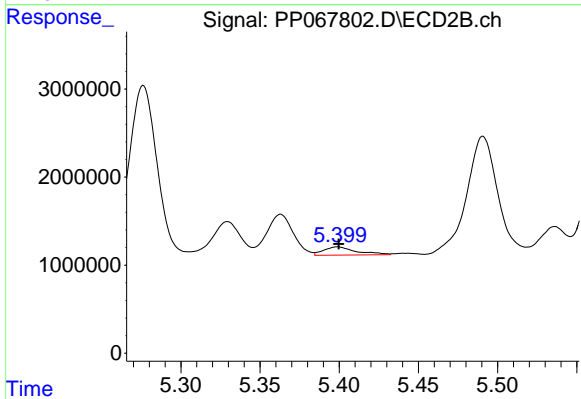
#21 AR-1248-1

R.T.: 5.162 min
 Delta R.T.: 0.003 min
 Response: 401497
 Conc: 17.72 ng/ml



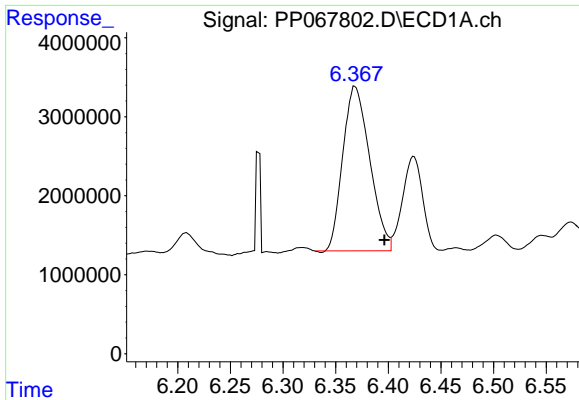
#22 AR-1248-2

R.T.: 6.208 min
 Delta R.T.: 0.018 min
 Response: 4420727
 Conc: 131.50 ng/ml



#22 AR-1248-2

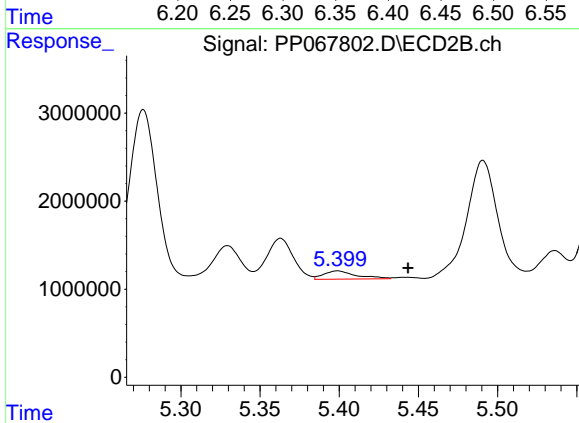
R.T.: 5.399 min
 Delta R.T.: 0.000 min
 Response: 1333336
 Conc: 40.29 ng/ml



#23 AR-1248-3

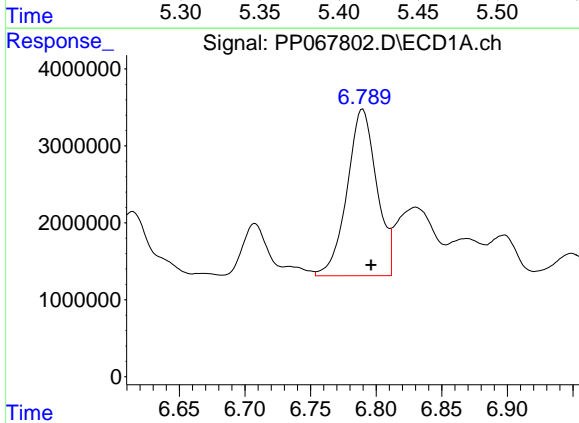
R.T.: 6.368 min
 Delta R.T.: -0.028 min
 Response: 37105345
 Conc: 1013.10 ng/ml

Instrument :
 ECD_P
 ClientSampleId :
 Q119-10A



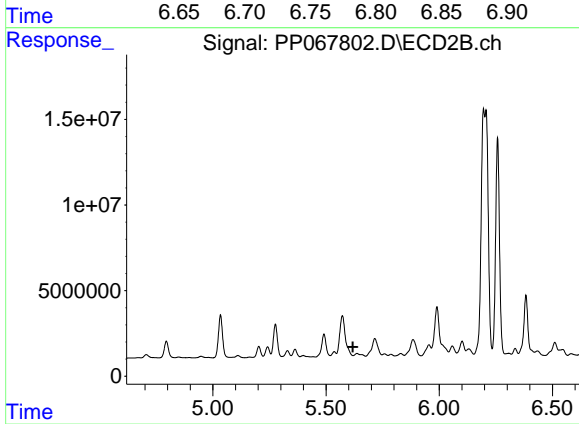
#23 AR-1248-3

R.T.: 5.399 min
 Delta R.T.: -0.044 min
 Response: 1333336
 Conc: 38.68 ng/ml



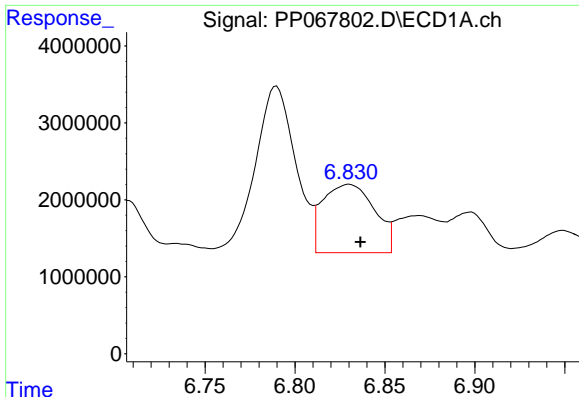
#24 AR-1248-4

R.T.: 6.790 min
 Delta R.T.: -0.006 min
 Response: 33962073
 Conc: 839.59 ng/ml



#24 AR-1248-4

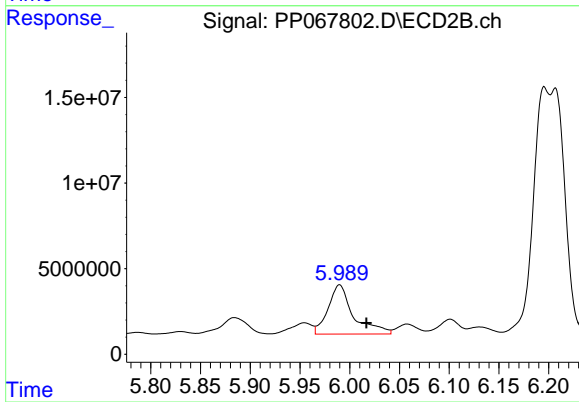
R.T.: 5.636 min
 Delta R.T.: 0.018 min
 Response: -1759966
 Conc: N.D.



#25 AR-1248-5

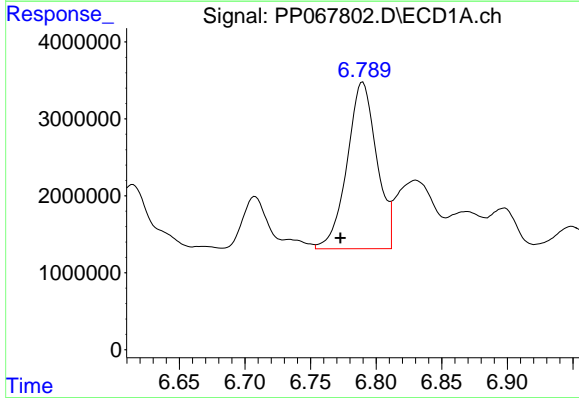
R.T.: 6.830 min
 Delta R.T.: -0.006 min
 Response: 17814542
 Conc: 449.17 ng/ml

Instrument :
 ECD_P
 ClientSampleId :
 Q119-10A



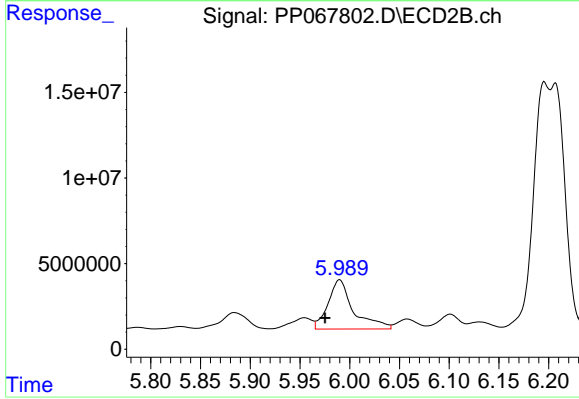
#25 AR-1248-5

R.T.: 5.990 min
 Delta R.T.: -0.027 min
 Response: 50936228
 Conc: 1360.36 ng/ml



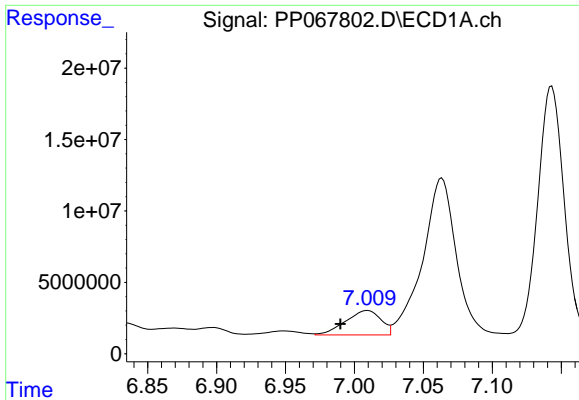
#26 AR-1254-1

R.T.: 6.790 min
 Delta R.T.: 0.017 min
 Response: 33962073
 Conc: 758.38 ng/ml



#26 AR-1254-1

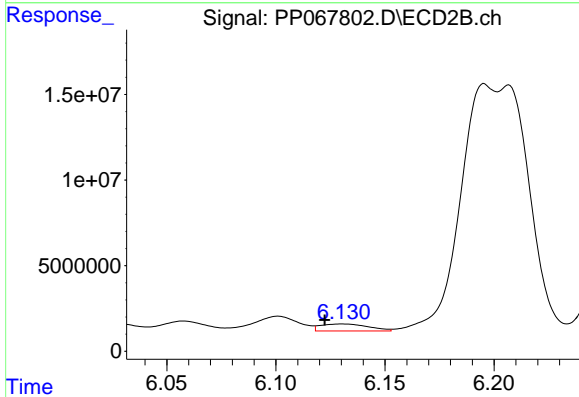
R.T.: 5.990 min
 Delta R.T.: 0.015 min
 Response: 50936228
 Conc: 862.10 ng/ml



#27 AR-1254-2

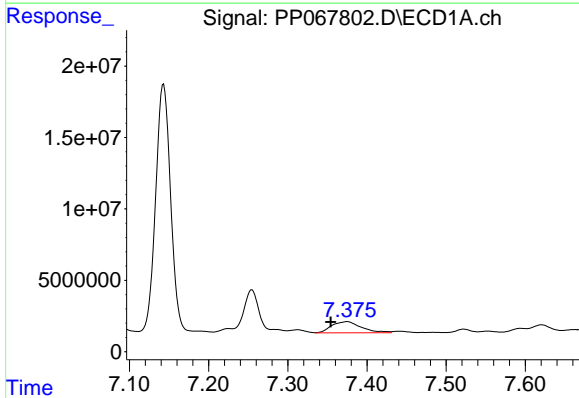
R.T.: 7.009 min
 Delta R.T.: 0.020 min
 Response: 30668995
 Conc: 463.99 ng/ml

Instrument :
 ECD_P
 ClientSampleId :
 Q119-10A



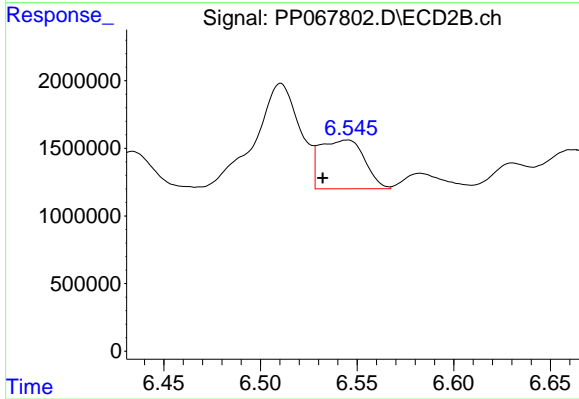
#27 AR-1254-2

R.T.: 6.130 min
 Delta R.T.: 0.008 min
 Response: 6222966
 Conc: 118.61 ng/ml



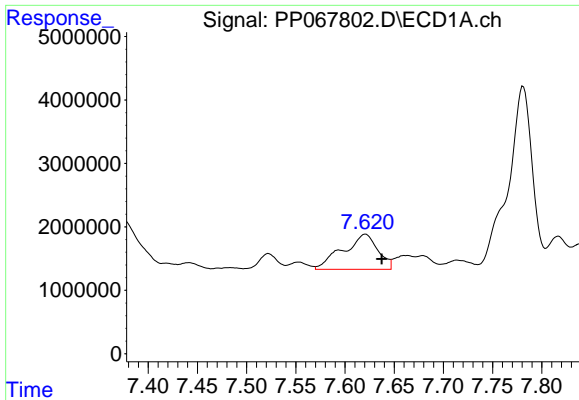
#28 AR-1254-3

R.T.: 7.375 min
 Delta R.T.: 0.021 min
 Response: 20416075
 Conc: 293.96 ng/ml



#28 AR-1254-3

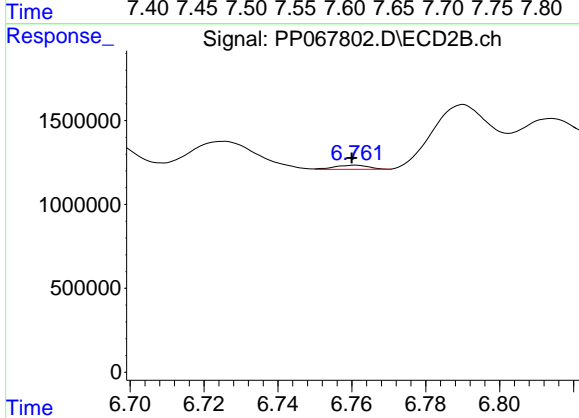
R.T.: 6.545 min
 Delta R.T.: 0.013 min
 Response: 5779644
 Conc: 69.46 ng/ml



#29 AR-1254-4

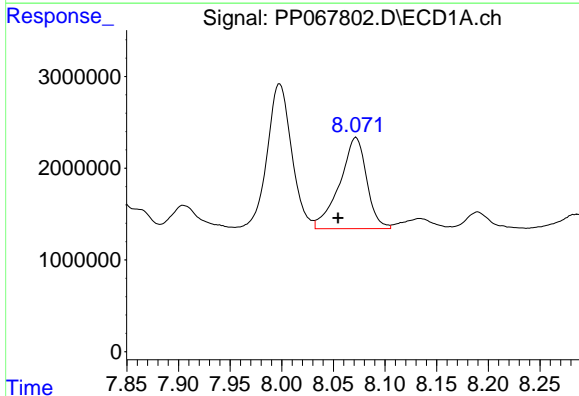
R.T.: 7.621 min
 Delta R.T.: -0.017 min
 Response: 13648293
 Conc: 273.49 ng/ml

Instrument :
 ECD_P
 ClientSampleId :
 Q119-10A



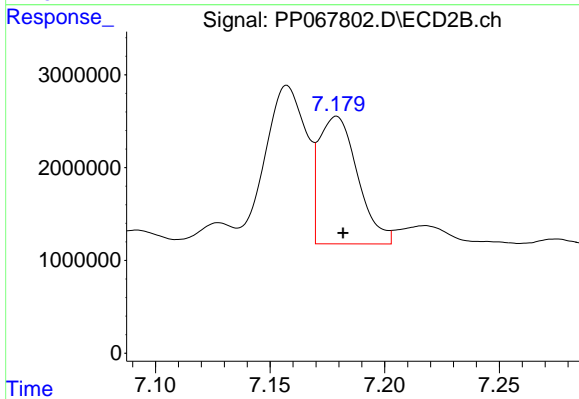
#29 AR-1254-4

R.T.: 6.761 min
 Delta R.T.: 0.000 min
 Response: 152393
 Conc: 3.16 ng/ml



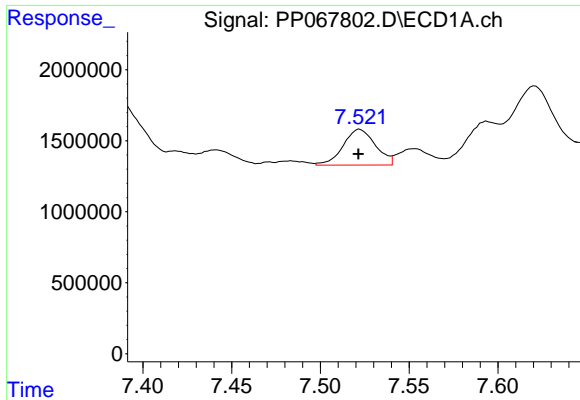
#30 AR-1254-5

R.T.: 8.072 min
 Delta R.T.: 0.017 min
 Response: 18166126
 Conc: 306.38 ng/ml



#30 AR-1254-5

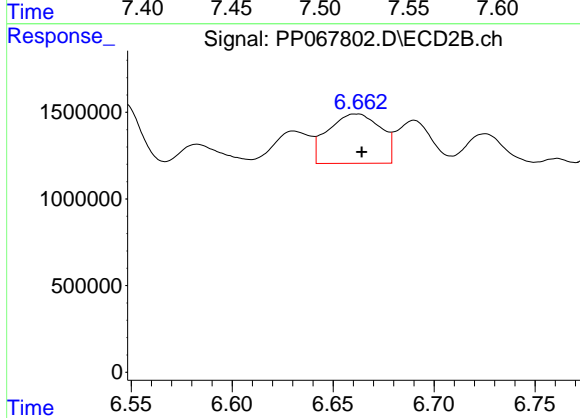
R.T.: 7.179 min
 Delta R.T.: -0.003 min
 Response: 16143927
 Conc: 219.49 ng/ml



#31 AR-1260-1

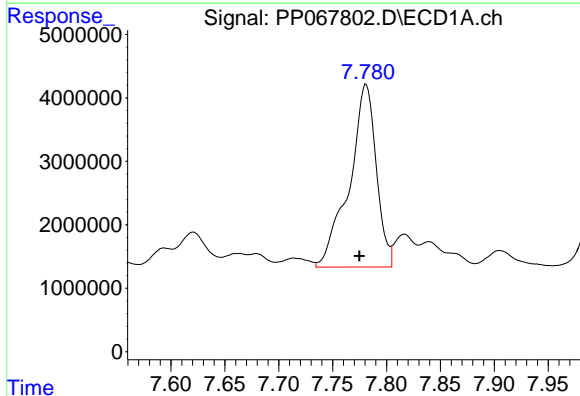
R.T.: 7.522 min
 Delta R.T.: 0.000 min
 Response: 3186016
 Conc: 58.97 ng/ml

Instrument :
 ECD_P
 ClientSampleId :
 Q119-10A



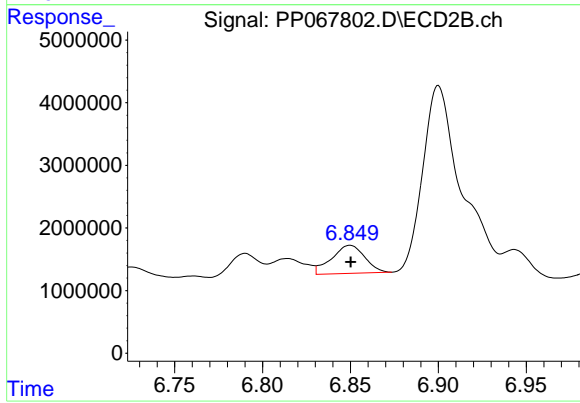
#31 AR-1260-1

R.T.: 6.662 min
 Delta R.T.: -0.003 min
 Response: 5172236
 Conc: 90.80 ng/ml



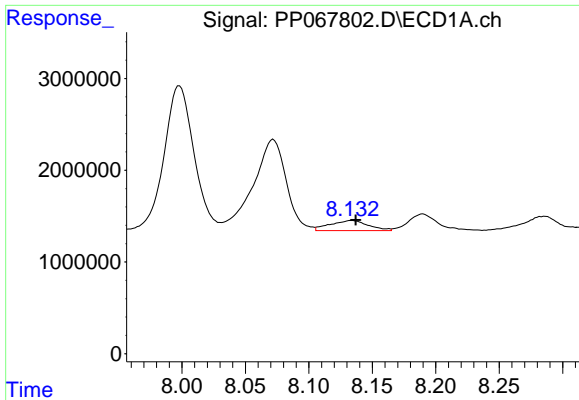
#32 AR-1260-2

R.T.: 7.781 min
 Delta R.T.: 0.006 min
 Response: 50217593
 Conc: 793.69 ng/ml



#32 AR-1260-2

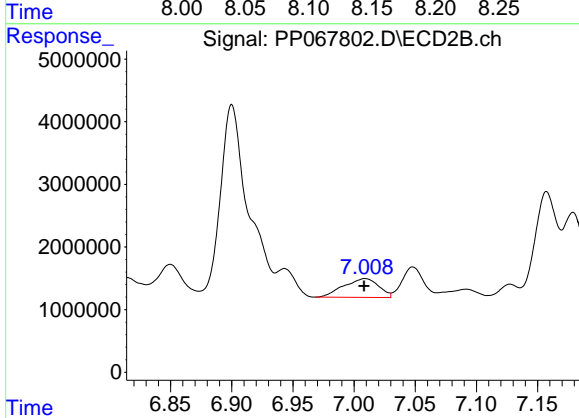
R.T.: 6.850 min
 Delta R.T.: 0.000 min
 Response: 5904171
 Conc: 88.51 ng/ml



#33 AR-1260-3

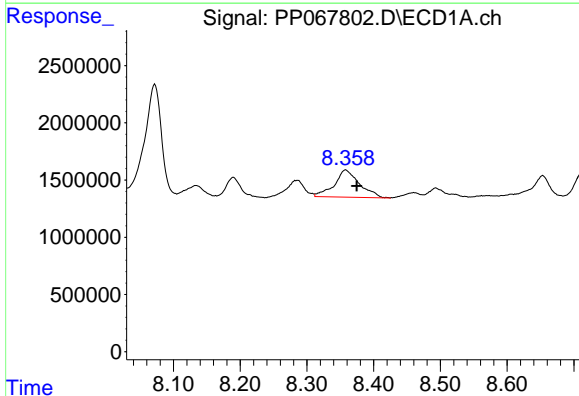
R.T.: 8.134 min
 Delta R.T.: -0.003 min
 Response: 2310476
 Conc: 44.56 ng/ml

Instrument :
 ECD_P
 ClientSampleId :
 Q119-10A



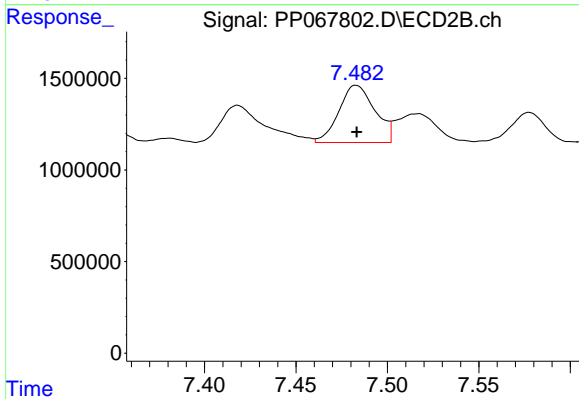
#33 AR-1260-3

R.T.: 7.009 min
 Delta R.T.: 0.000 min
 Response: 5949925
 Conc: 93.40 ng/ml



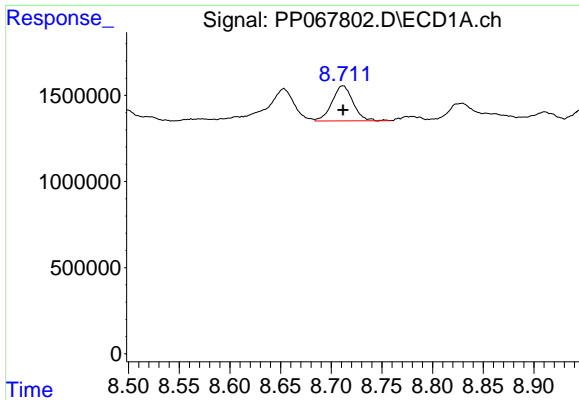
#34 AR-1260-4

R.T.: 8.358 min
 Delta R.T.: -0.017 min
 Response: 6205636
 Conc: 103.09 ng/ml



#34 AR-1260-4

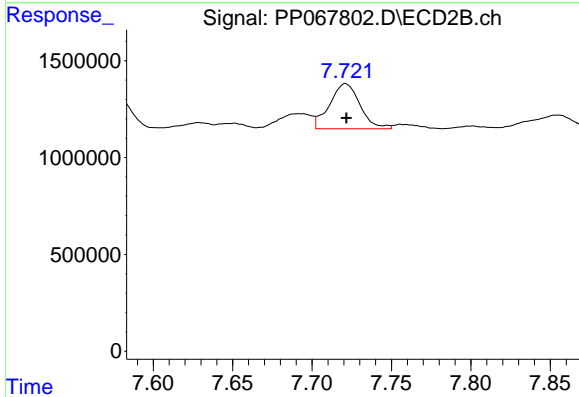
R.T.: 7.483 min
 Delta R.T.: 0.000 min
 Response: 4292506
 Conc: 77.63 ng/ml



#35 AR-1260-5

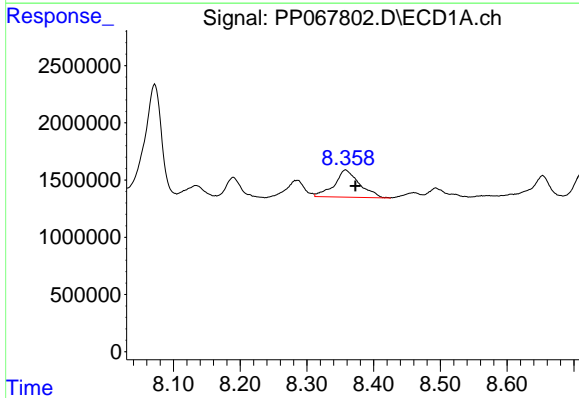
R.T.: 8.712 min
 Delta R.T.: 0.000 min
 Response: 2943199
 Conc: 27.32 ng/ml

Instrument :
 ECD_P
 ClientSampleId :
 Q119-10A



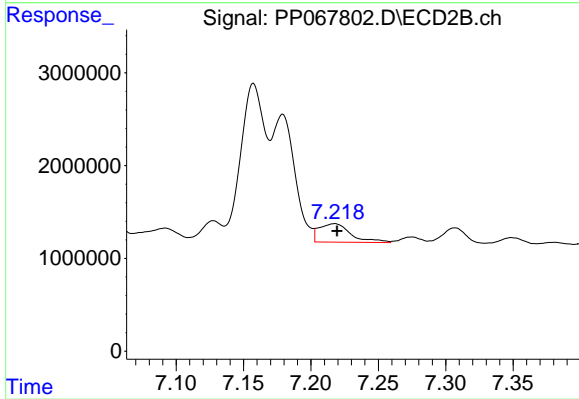
#35 AR-1260-5

R.T.: 7.721 min
 Delta R.T.: 0.000 min
 Response: 3092707
 Conc: 25.29 ng/ml



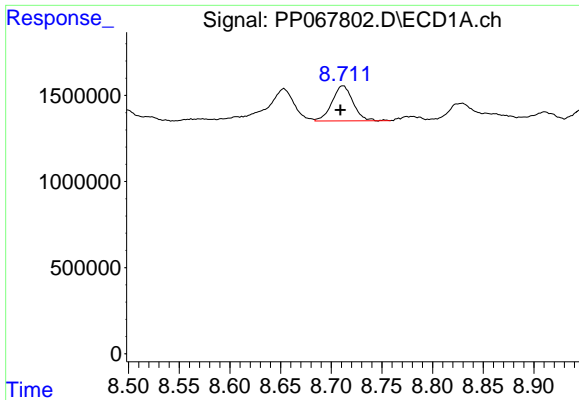
#36 AR-1262-1

R.T.: 8.358 min
 Delta R.T.: -0.014 min
 Response: 6205636
 Conc: 86.46 ng/ml



#36 AR-1262-1

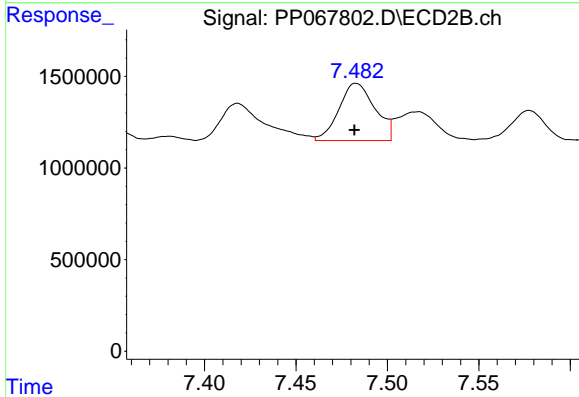
R.T.: 7.218 min
 Delta R.T.: -0.002 min
 Response: 3291049
 Conc: 41.83 ng/ml



#37 AR-1262-2

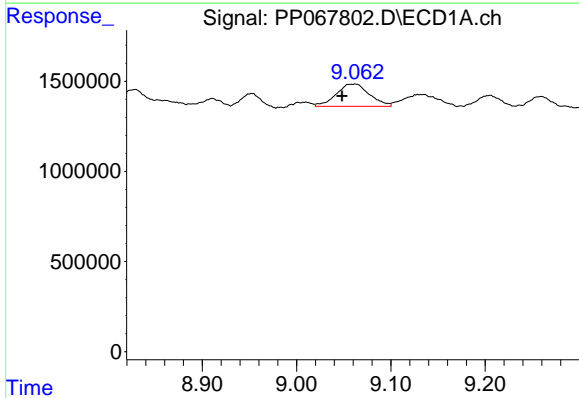
R.T.: 8.712 min
 Delta R.T.: 0.003 min
 Response: 2943199
 Conc: 24.21 ng/ml

Instrument :
 ECD_P
 ClientSampleId :
 Q119-10A



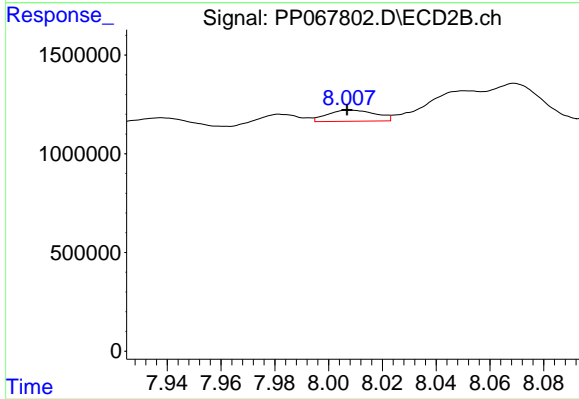
#37 AR-1262-2

R.T.: 7.483 min
 Delta R.T.: 0.000 min
 Response: 4292506
 Conc: 60.49 ng/ml



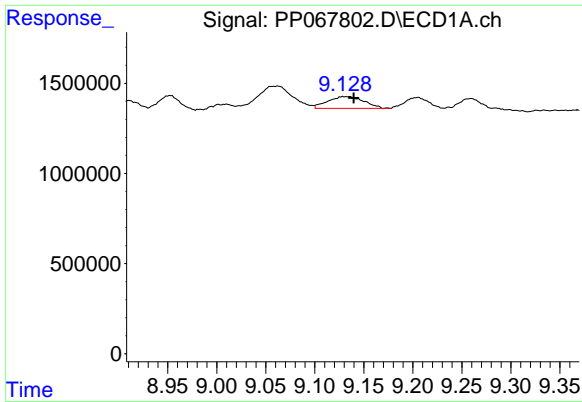
#38 AR-1262-3

R.T.: 9.061 min
 Delta R.T.: 0.013 min
 Response: 3033956
 Conc: 34.28 ng/ml



#38 AR-1262-3

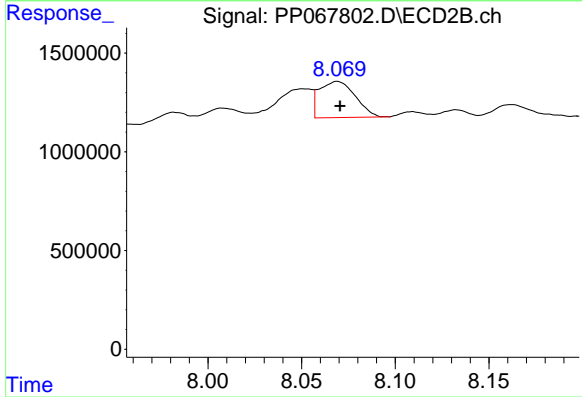
R.T.: 8.008 min
 Delta R.T.: 0.000 min
 Response: 704803
 Conc: 12.34 ng/ml



#39 AR-1262-4

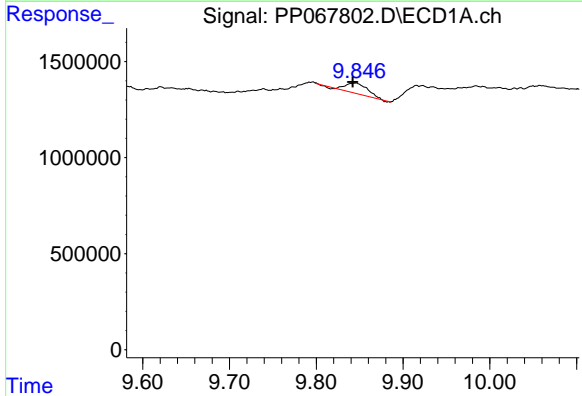
R.T.: 9.133 min
 Delta R.T.: -0.007 min
 Response: 1678319
 Conc: 23.99 ng/ml

Instrument :
 ECD_P
 ClientSampleId :
 Q119-10A



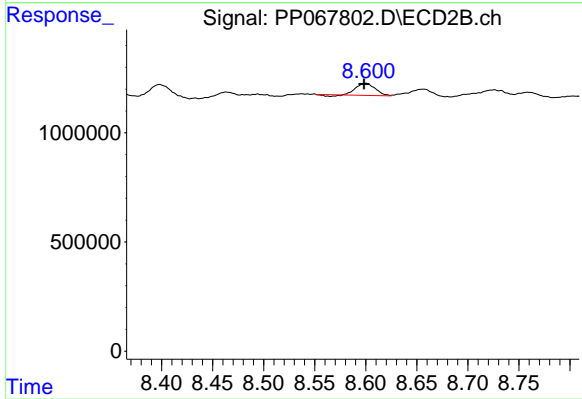
#39 AR-1262-4

R.T.: 8.069 min
 Delta R.T.: -0.001 min
 Response: 2445254
 Conc: 24.35 ng/ml



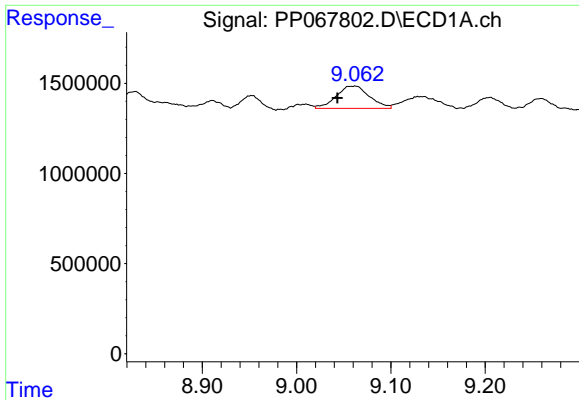
#40 AR-1262-5

R.T.: 9.845 min
 Delta R.T.: 0.003 min
 Response: 972892
 Conc: 20.79 ng/ml



#40 AR-1262-5

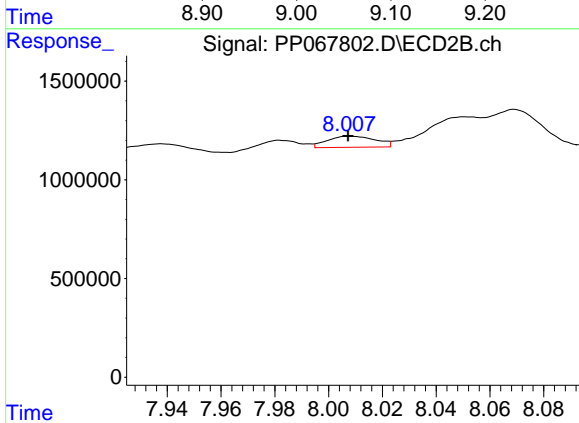
R.T.: 8.600 min
 Delta R.T.: 0.002 min
 Response: 689931
 Conc: 13.79 ng/ml



#41 AR-1268-1

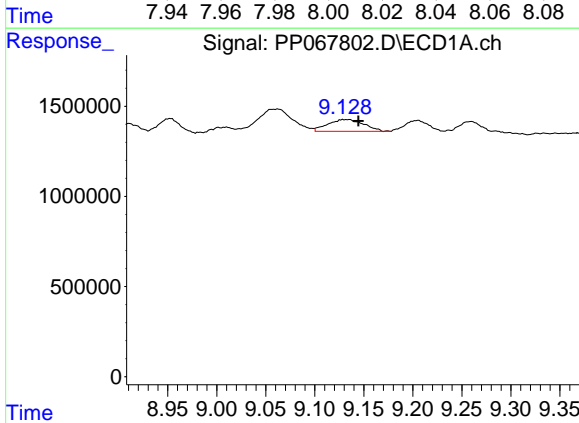
R.T.: 9.061 min
 Delta R.T.: 0.018 min
 Response: 3033956
 Conc: 19.88 ng/ml

Instrument :
 ECD_P
 ClientSampleId :
 Q119-10A



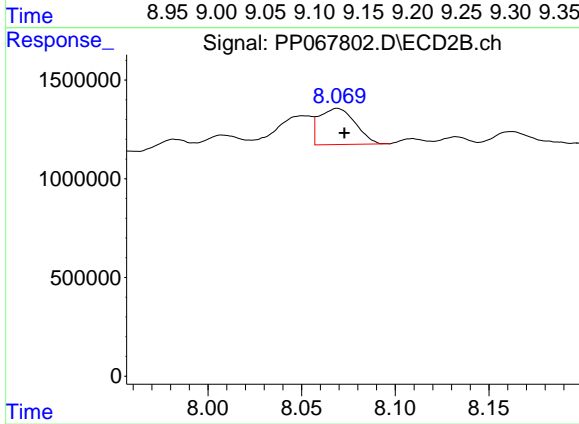
#41 AR-1268-1

R.T.: 8.008 min
 Delta R.T.: 0.000 min
 Response: 704803
 Conc: 4.43 ng/ml



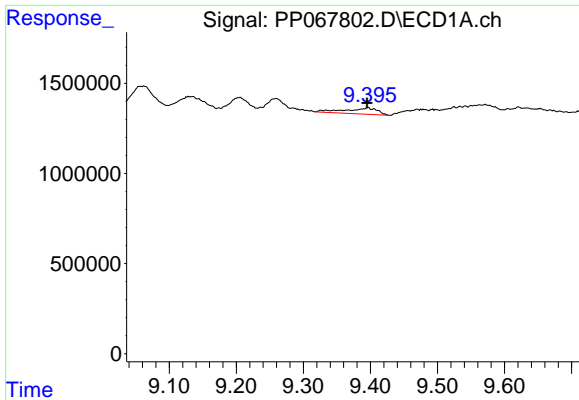
#42 AR-1268-2

R.T.: 9.133 min
 Delta R.T.: -0.012 min
 Response: 1678319
 Conc: 12.29 ng/ml



#42 AR-1268-2

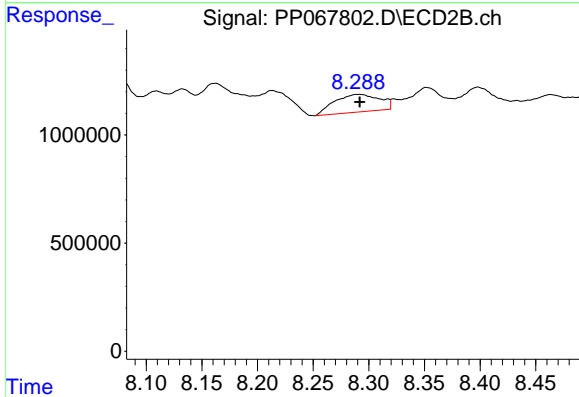
R.T.: 8.069 min
 Delta R.T.: -0.004 min
 Response: 2445254
 Conc: 17.08 ng/ml



#43 AR-1268-3

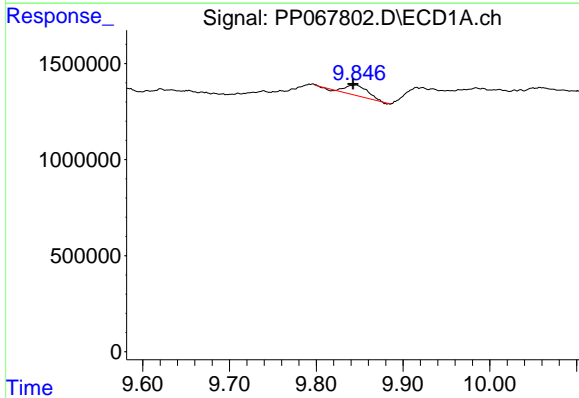
R.T.: 9.396 min
 Delta R.T.: 0.001 min
 Response: 1108591
 Conc: 9.17 ng/ml

Instrument :
 ECD_P
 ClientSampleId :
 Q119-10A



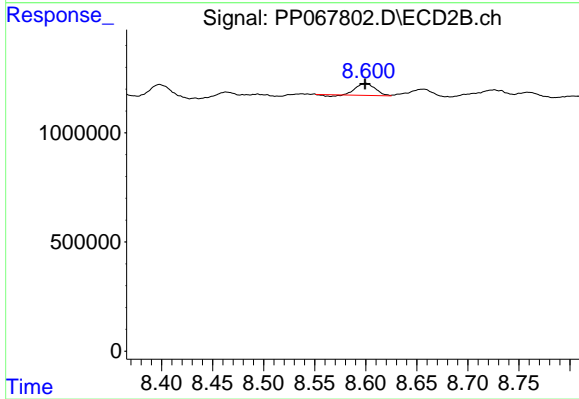
#43 AR-1268-3

R.T.: 8.290 min
 Delta R.T.: -0.001 min
 Response: 2299790
 Conc: 18.04 ng/ml



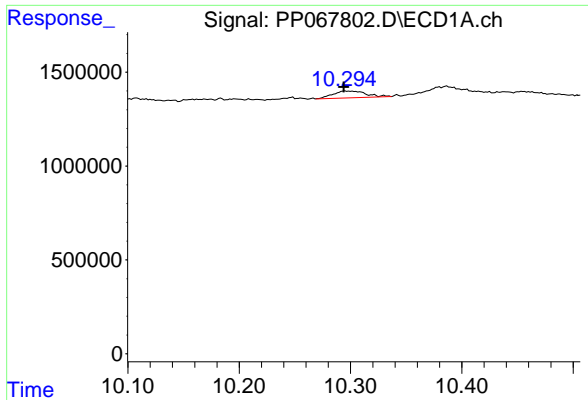
#44 AR-1268-4

R.T.: 9.845 min
 Delta R.T.: 0.002 min
 Response: 972892
 Conc: 19.14 ng/ml



#44 AR-1268-4

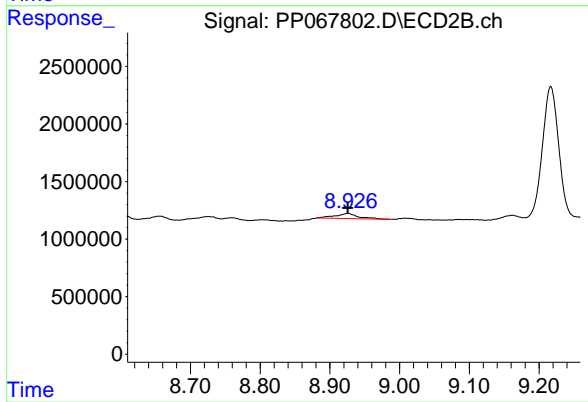
R.T.: 8.600 min
 Delta R.T.: 0.000 min
 Response: 689931
 Conc: 12.22 ng/ml



#45 AR-1268-5

R.T.: 10.297 min
Delta R.T.: 0.003 min
Response: 735297
Conc: 1.97 ng/ml

Instrument :
ECD_P
ClientSampleId :
Q119-10A



#45 AR-1268-5

R.T.: 8.926 min
Delta R.T.: 0.000 min
Response: 1072440
Conc: 2.84 ng/ml