

Data Path : Z:\pestpcbsrv\HPCHEM1\ECD\_P\Data\PP101524\  
 Data File : PP067848.D  
 Signal(s) : Signal #1: ECD1A.ch Signal #2: ECD2B.ch  
 Acq On : 15 Oct 2024 15:57  
 Operator : YP\AJ  
 Sample : P4394-02  
 Misc :  
 ALS Vial : 44 Sample Multiplier: 1

Instrument :  
 ECD\_P  
 ClientSampleId :  
 WASH-OIL

Integration File signal 1: autoint1.e  
 Integration File signal 2: autoint2.e  
 Quant Time: Oct 16 02:36:30 2024  
 Quant Method : Z:\pestpcbsrv\HPCHEM1\ECD\_P\methods\PP100824.M  
 Quant Title : GC EXTRACTABLES  
 QLast Update : Wed Oct 09 05:48:32 2024  
 Response via : Initial Calibration  
 Integrator: ChemStation

Volume Inj. : 2 µl  
 Signal #1 Phase : ZB-MR1 Signal #2 Phase: ZB-MR2  
 Signal #1 Info : 30Mx0.32mmx 0.50µ Signal #2 Info : 30M x 0.32mm x 0.25µm

Compound	RT#1	RT#2	Resp#1	Resp#2	ng/ml	ng/ml
-----						
System Monitoring Compounds						
1) SA Tetrachlo...	4.760	4.063	14806861	16053580	15.996	15.888
2) SA Decachlor...	10.667	9.214	28258766	24476286	24.545	21.825
Target Compounds						
3) L1 AR-1016-1	5.958f	5.123f	375882	363618	11.367	10.393
4) L1 AR-1016-2	5.958	5.211	375882	108121	7.707	2.245 #
5) L1 AR-1016-3	5.958f	5.347	375882	210417	11.928	7.811 #
6) L1 AR-1016-4	6.133	5.394	191690	175752	7.446	7.297
7) L1 AR-1016-5	6.391	5.675f	362848	165275	13.406	5.435 #
9) L2 AR-1221-2	5.070	4.373	277026	277266	29.282	27.834
10) L2 AR-1221-3	5.070f	4.464	277026	68530	9.583	2.201 #
11) L3 AR-1232-1	5.070f	4.464	277026	68530	12.118	2.816 #
12) L3 AR-1232-2	5.639	5.211	1019331	108121	86.508	4.834 #
13) L3 AR-1232-3	5.958	5.347	375882	210417	16.875	17.617
14) L3 AR-1232-4	6.133	5.440	191690	279387	16.983	24.228 #
15) L3 AR-1232-5	6.200	5.675f	336119	165275	36.854	12.288 #
16) L4 AR-1242-1	5.958f	5.123f	375882	363618	13.455	12.506
17) L4 AR-1242-2	5.958	5.211	375882	108121	9.250	2.693 #
18) L4 AR-1242-3	5.958f	5.347	375882	210417	13.940	9.354 #
19) L4 AR-1242-4	6.133	5.440	191690	279387	8.936	11.770 #
20) L4 AR-1242-5	6.858	5.981	174904	148547	7.250	5.185 #
21) L5 AR-1248-1	5.958f	5.123f	375882	363618	17.546	16.044
22) L5 AR-1248-2	6.200	5.394	336119	175752	9.999	5.310 #
23) L5 AR-1248-3	6.391	5.440	362848	279387	9.907	8.104
24) L5 AR-1248-4	6.803	5.675f	521781	165275	12.899	4.035 #
25) L5 AR-1248-5	6.858	6.046	174904	430876	4.410	11.507 #
26) L6 AR-1254-1	6.761	5.981	159649	148547	3.565	2.514 #
27) L6 AR-1254-2	7.045f	6.092	429668	179350	6.500	3.419 #
28) L6 AR-1254-3	7.359	6.556	212868	520811	3.065	6.259 #
29) L6 AR-1254-4	7.628	6.774	811037	143367	16.252	2.970 #
30) L6 AR-1254-5	8.074	7.148	480746	52744	8.108	0.717 #
31) L7 AR-1260-1	7.466f	6.644	805681	243379	14.913	4.273 #
32) L7 AR-1260-2	7.775	6.869	981185	325781	15.508	4.884 #
33) L7 AR-1260-3	8.125	7.013	234848	750041	4.529	11.774 #
34) L7 AR-1260-4	8.378	7.499	636838	181947	10.580	3.291 #
35) L7 AR-1260-5	0.000	7.720	0	96628	N.D.	0.790 #
36) L8 AR-1262-1	8.378	7.269f	636838	1897395	8.873	24.117 #
37) L8 AR-1262-2	0.000	7.499	0	181947	N.D.	2.564 #
38) L8 AR-1262-3	0.000	8.048f	0	20399	N.D.	0.357 #
39) L8 AR-1262-4	0.000	8.090	0	18250	N.D.	0.182 #
40) L8 AR-1262-5	0.000	8.660f	0	29542	N.D.	0.591 #
41) L9 AR-1268-1	0.000	8.048f	0	20399	N.D.	0.128 #
42) L9 AR-1268-2	0.000	8.090	0	18250	N.D.	0.127 #

Data Path : Z:\pestpcbsrv\HPCHEM1\ECD\_P\Data\PP101524\  
 Data File : PP067848.D  
 Signal(s) : Signal #1: ECD1A.ch Signal #2: ECD2B.ch  
 Acq On : 15 Oct 2024 15:57  
 Operator : YP\AJ  
 Sample : P4394-02  
 Misc :  
 ALS Vial : 44 Sample Multiplier: 1

**Instrument :**  
 ECD\_P  
**ClientSampleId :**  
 WASH-OIL

Integration File signal 1: autoint1.e  
 Integration File signal 2: autoint2.e  
 Quant Time: Oct 16 02:36:30 2024  
 Quant Method : Z:\pestpcbsrv\HPCHEM1\ECD\_P\methods\PP100824.M  
 Quant Title : GC EXTRACTABLES  
 QLast Update : Wed Oct 09 05:48:32 2024  
 Response via : Initial Calibration  
 Integrator: ChemStation

Volume Inj. : 2 µl  
 Signal #1 Phase : ZB-MR1 Signal #2 Phase: ZB-MR2  
 Signal #1 Info : 30Mx0.32mmx 0.50µ Signal #2 Info : 30M x 0.32mm x 0.25µm

	Compound	RT#1	RT#2	Resp#1	Resp#2	ng/ml	ng/ml
43)	L9 AR-1268-3	0.000	8.268	0	33238	N.D.	0.261 #
44)	L9 AR-1268-4	0.000	8.660f	0	29542	N.D.	0.523 #
45)	L9 AR-1268-5	0.000	8.930	0	159583	N.D.	0.422 #

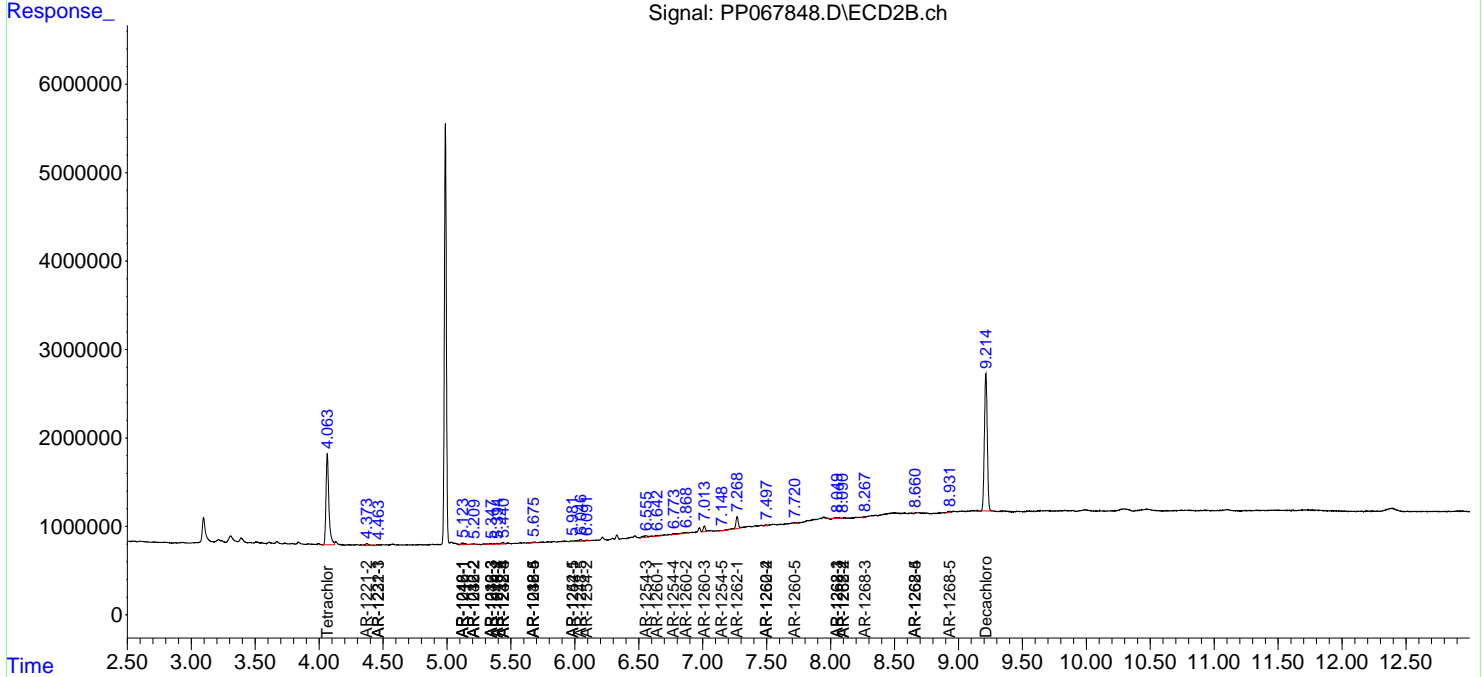
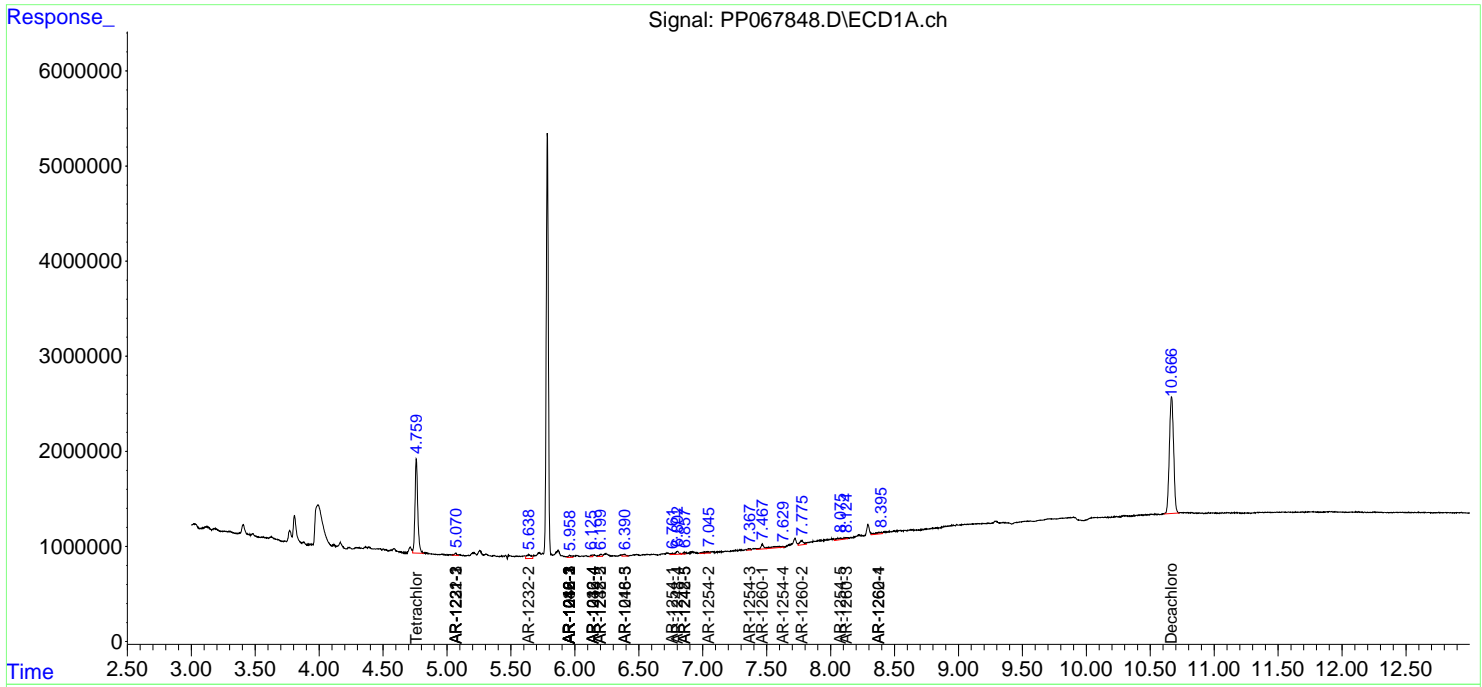
(f)=RT Delta > 1/2 Window (#)=Amounts differ by > 25% (m)=manual int.

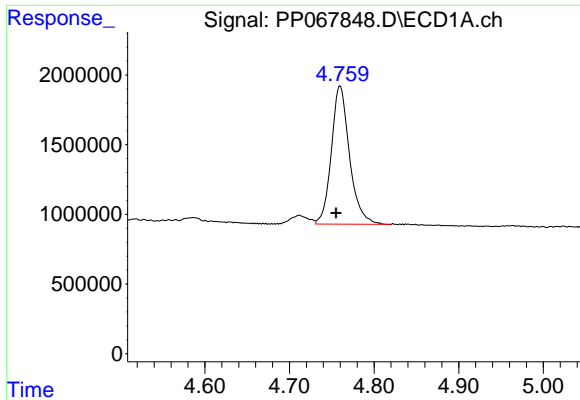
Data Path : Z:\pestpcbsrv\HPCHEM1\ECD\_P\Data\PP101524\  
 Data File : PP067848.D  
 Signal(s) : Signal #1: ECD1A.ch Signal #2: ECD2B.ch  
 Acq On : 15 Oct 2024 15:57  
 Operator : YP\AJ  
 Sample : P4394-02  
 Misc :  
 ALS Vial : 44 Sample Multiplier: 1

**Instrument :**  
 ECD\_P  
**ClientSampleId :**  
 WASH-OIL

Integration File signal 1: autoint1.e  
 Integration File signal 2: autoint2.e  
 Quant Time: Oct 16 02:36:30 2024  
 Quant Method : Z:\pestpcbsrv\HPCHEM1\ECD\_P\methods\PP100824.M  
 Quant Title : GC EXTRACTABLES  
 QLast Update : Wed Oct 09 05:48:32 2024  
 Response via : Initial Calibration  
 Integrator: ChemStation

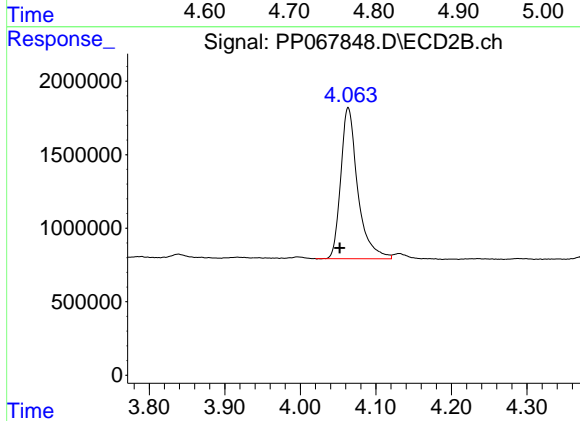
Volume Inj. : 2 µl  
 Signal #1 Phase : ZB-MR1 Signal #2 Phase: ZB-MR2  
 Signal #1 Info : 30Mx0.32mmx 0.50µ Signal #2 Info : 30M x 0.32mm x 0.25µm



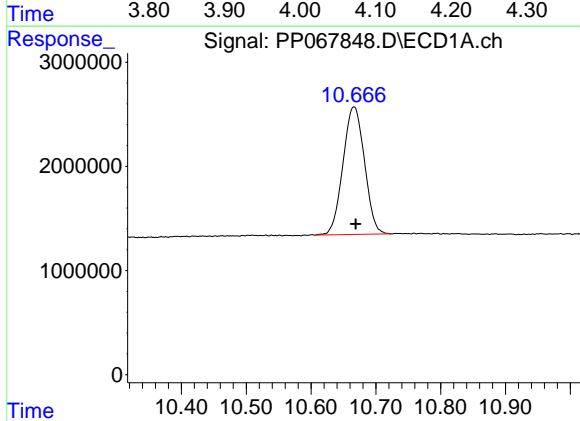


#1 Tetrachloro-m-xylene  
 R.T.: 4.760 min  
 Delta R.T.: 0.005 min  
 Response: 14806861  
 Conc: 16.00 ng/ml

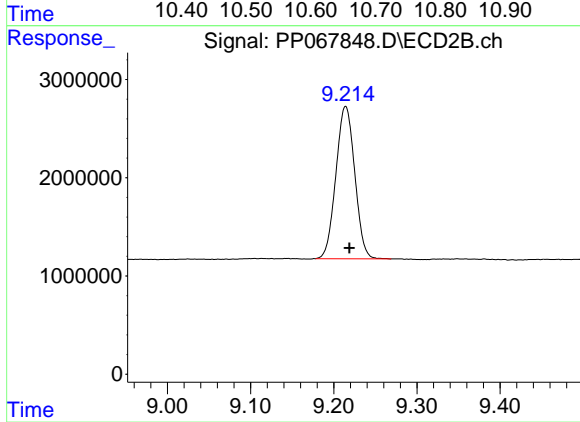
Instrument :  
 ECD\_P  
 ClientSampleId :  
 WASH-OIL



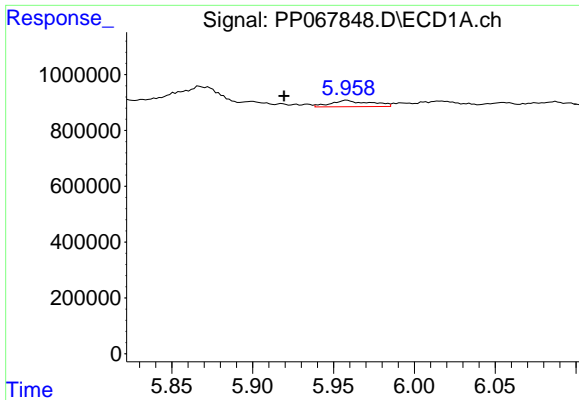
#1 Tetrachloro-m-xylene  
 R.T.: 4.063 min  
 Delta R.T.: 0.011 min  
 Response: 16053580  
 Conc: 15.89 ng/ml



#2 Decachlorobiphenyl  
 R.T.: 10.667 min  
 Delta R.T.: -0.002 min  
 Response: 28258766  
 Conc: 24.54 ng/ml



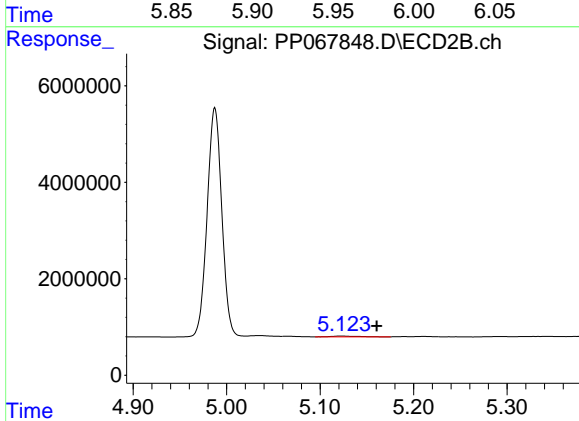
#2 Decachlorobiphenyl  
 R.T.: 9.214 min  
 Delta R.T.: -0.005 min  
 Response: 24476286  
 Conc: 21.83 ng/ml



#3 AR-1016-1

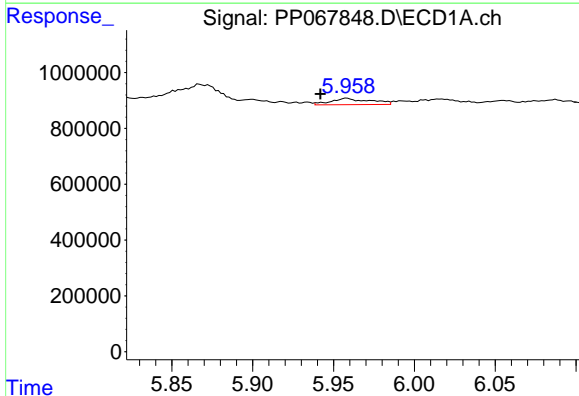
R.T.: 5.958 min  
 Delta R.T.: 0.039 min  
 Response: 375882  
 Conc: 11.37 ng/ml

Instrument :  
 ECD\_P  
 ClientSampleId :  
 WASH-OIL



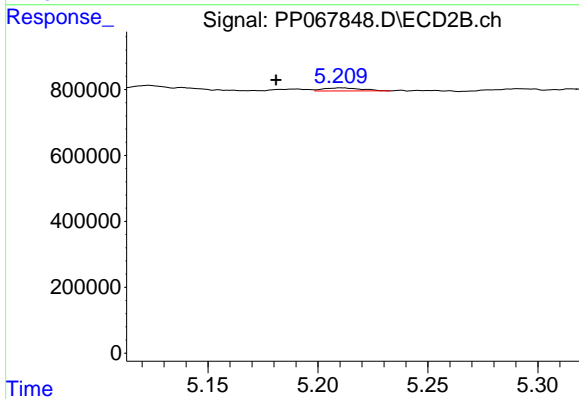
#3 AR-1016-1

R.T.: 5.123 min  
 Delta R.T.: -0.038 min  
 Response: 363618  
 Conc: 10.39 ng/ml



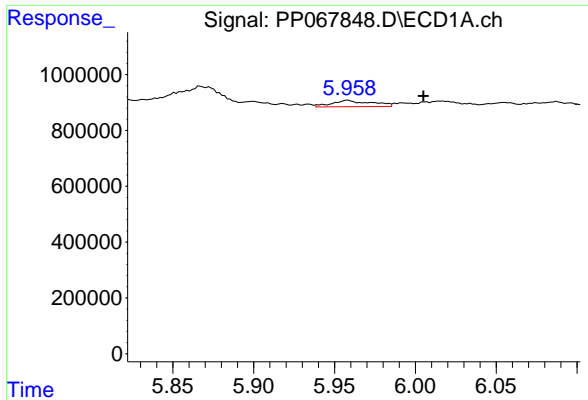
#4 AR-1016-2

R.T.: 5.958 min  
 Delta R.T.: 0.016 min  
 Response: 375882  
 Conc: 7.71 ng/ml



#4 AR-1016-2

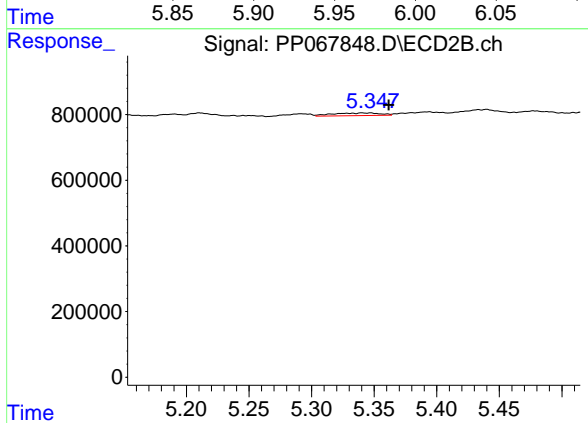
R.T.: 5.211 min  
 Delta R.T.: 0.030 min  
 Response: 108121  
 Conc: 2.24 ng/ml



#5 AR-1016-3

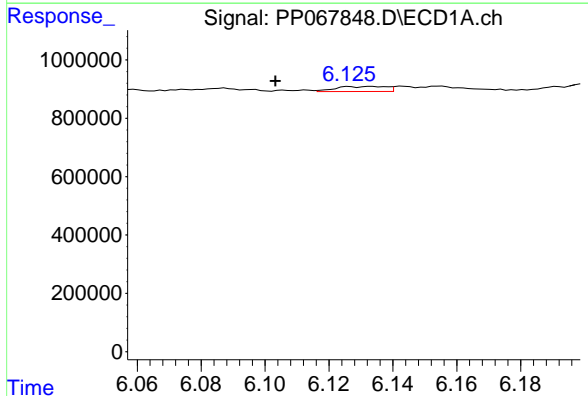
R.T.: 5.958 min  
 Delta R.T.: -0.047 min  
 Response: 375882  
 Conc: 11.93 ng/ml

Instrument :  
 ECD\_P  
 ClientSampleId :  
 WASH-OIL



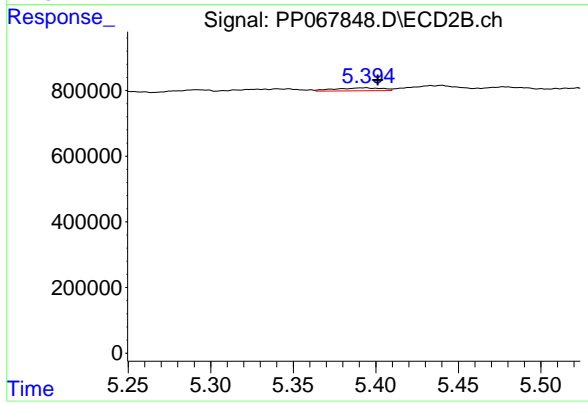
#5 AR-1016-3

R.T.: 5.347 min  
 Delta R.T.: -0.014 min  
 Response: 210417  
 Conc: 7.81 ng/ml



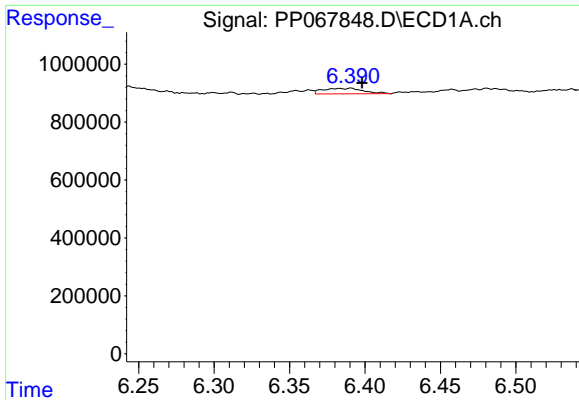
#6 AR-1016-4

R.T.: 6.133 min  
 Delta R.T.: 0.030 min  
 Response: 191690  
 Conc: 7.45 ng/ml



#6 AR-1016-4

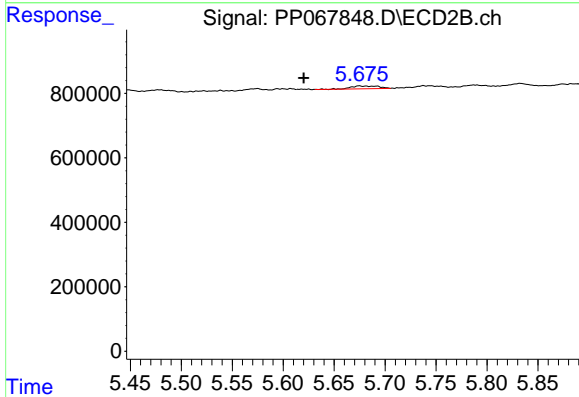
R.T.: 5.394 min  
 Delta R.T.: -0.007 min  
 Response: 175752  
 Conc: 7.30 ng/ml



#7 AR-1016-5

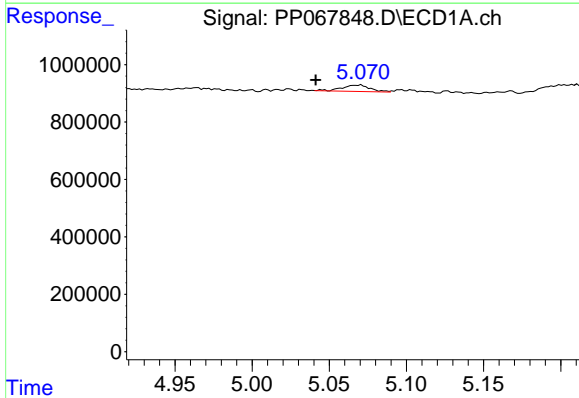
R.T.: 6.391 min  
 Delta R.T.: -0.007 min  
 Response: 362848  
 Conc: 13.41 ng/ml

Instrument :  
 ECD\_P  
 ClientSampleId :  
 WASH-OIL



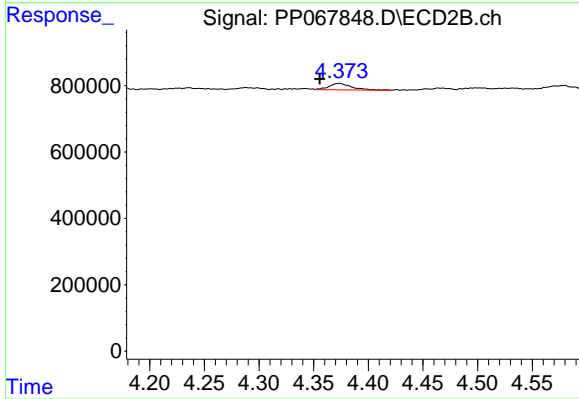
#7 AR-1016-5

R.T.: 5.675 min  
 Delta R.T.: 0.055 min  
 Response: 165275  
 Conc: 5.43 ng/ml



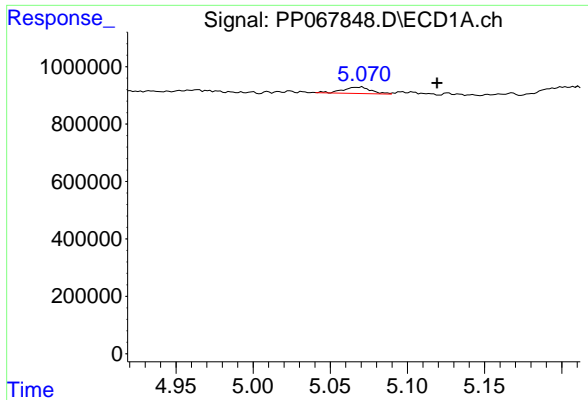
#9 AR-1221-2

R.T.: 5.070 min  
 Delta R.T.: 0.029 min  
 Response: 277026  
 Conc: 29.28 ng/ml



#9 AR-1221-2

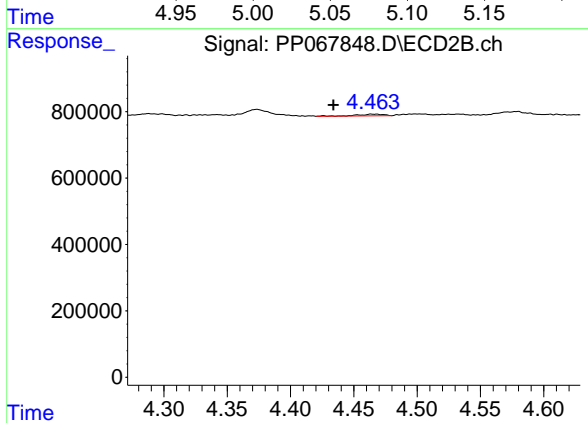
R.T.: 4.373 min  
 Delta R.T.: 0.018 min  
 Response: 277266  
 Conc: 27.83 ng/ml



#10 AR-1221-3

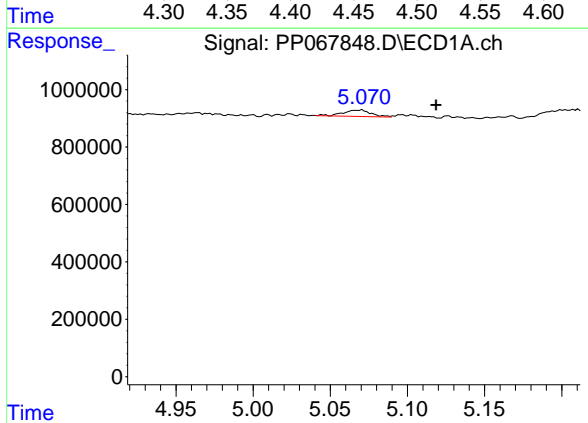
R.T.: 5.070 min  
 Delta R.T.: -0.049 min  
 Response: 277026  
 Conc: 9.58 ng/ml

Instrument :  
 ECD\_P  
 ClientSampleId :  
 WASH-OIL



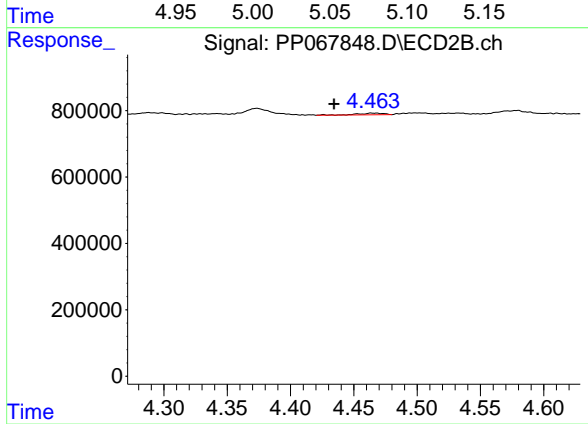
#10 AR-1221-3

R.T.: 4.464 min  
 Delta R.T.: 0.030 min  
 Response: 68530  
 Conc: 2.20 ng/ml



#11 AR-1232-1

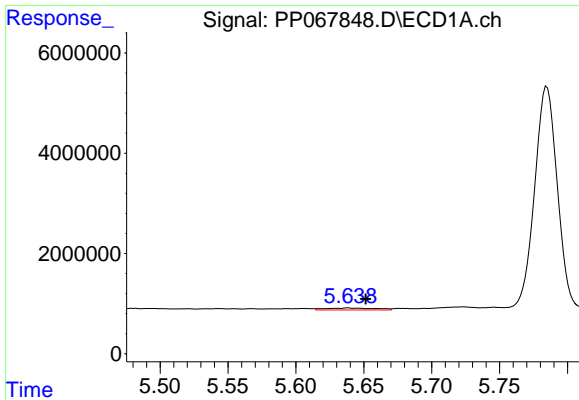
R.T.: 5.070 min  
 Delta R.T.: -0.048 min  
 Response: 277026  
 Conc: 12.12 ng/ml



#11 AR-1232-1

R.T.: 4.464 min  
 Delta R.T.: 0.030 min  
 Response: 68530  
 Conc: 2.82 ng/ml

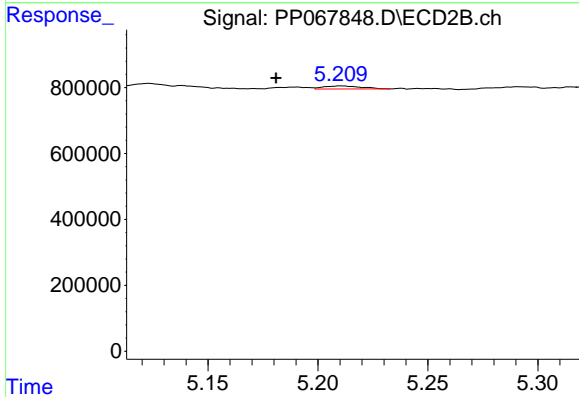




#12 AR-1232-2

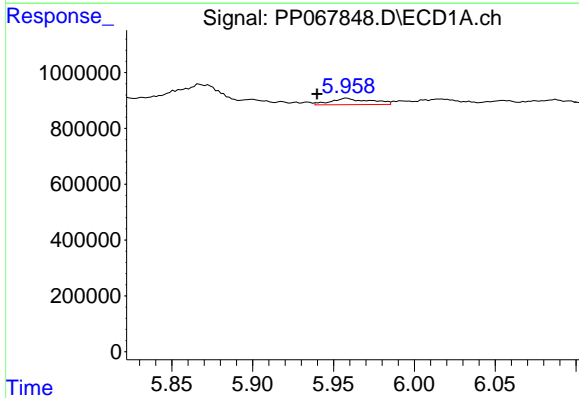
R.T.: 5.639 min  
 Delta R.T.: -0.013 min  
 Response: 1019331  
 Conc: 86.51 ng/ml

Instrument :  
 ECD\_P  
 ClientSampleId :  
 WASH-OIL



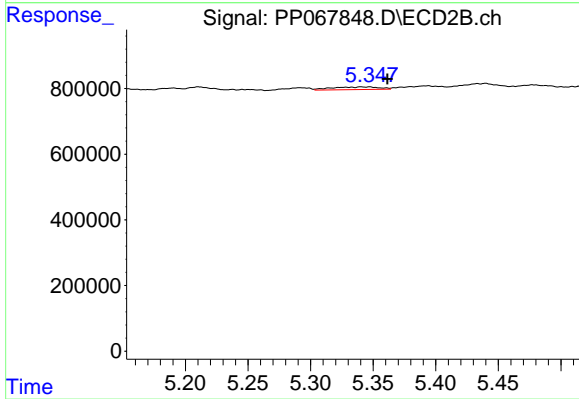
#12 AR-1232-2

R.T.: 5.211 min  
 Delta R.T.: 0.030 min  
 Response: 108121  
 Conc: 4.83 ng/ml



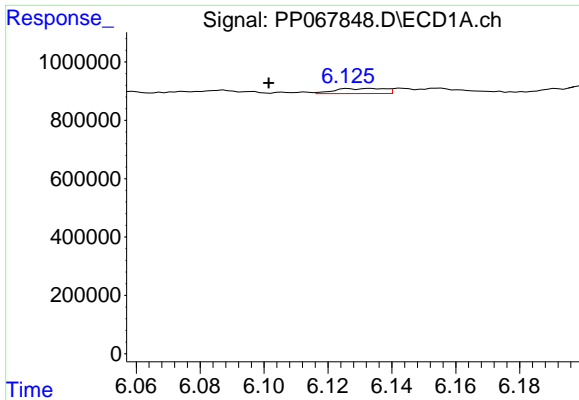
#13 AR-1232-3

R.T.: 5.958 min  
 Delta R.T.: 0.018 min  
 Response: 375882  
 Conc: 16.87 ng/ml



#13 AR-1232-3

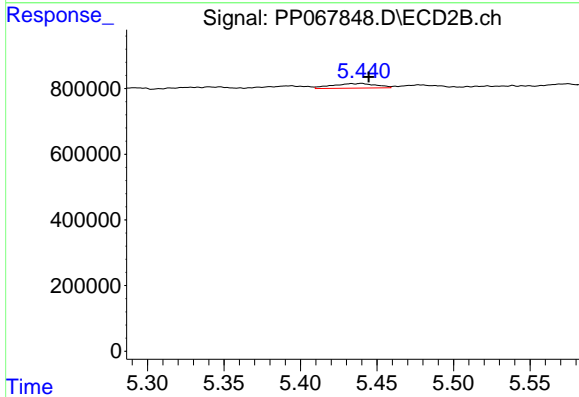
R.T.: 5.347 min  
 Delta R.T.: -0.014 min  
 Response: 210417  
 Conc: 17.62 ng/ml



#14 AR-1232-4

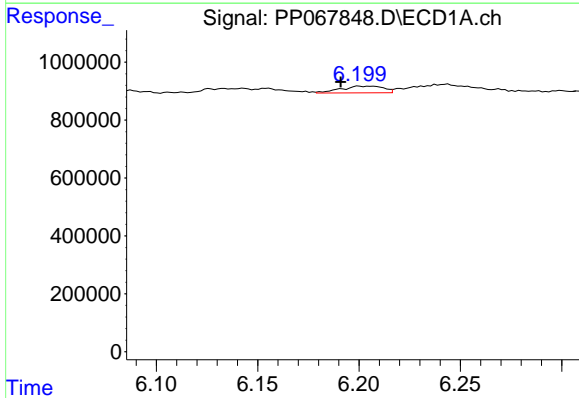
R.T.: 6.133 min  
 Delta R.T.: 0.032 min  
 Response: 191690  
 Conc: 16.98 ng/ml

Instrument :  
 ECD\_P  
 ClientSampleId :  
 WASH-OIL



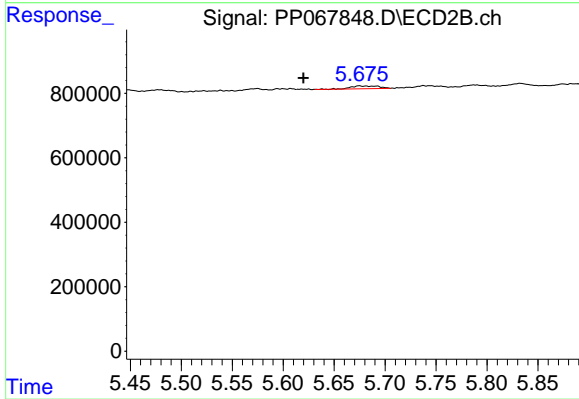
#14 AR-1232-4

R.T.: 5.440 min  
 Delta R.T.: -0.005 min  
 Response: 279387  
 Conc: 24.23 ng/ml



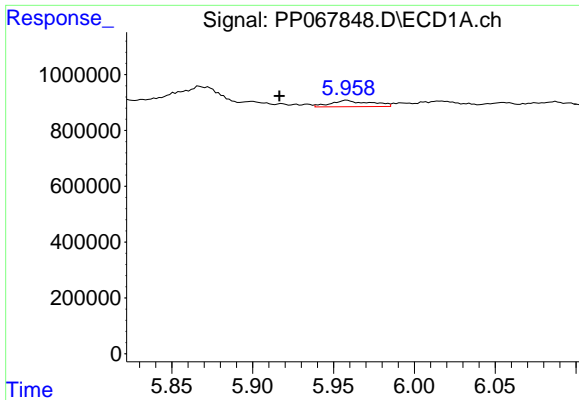
#15 AR-1232-5

R.T.: 6.200 min  
 Delta R.T.: 0.009 min  
 Response: 336119  
 Conc: 36.85 ng/ml



#15 AR-1232-5

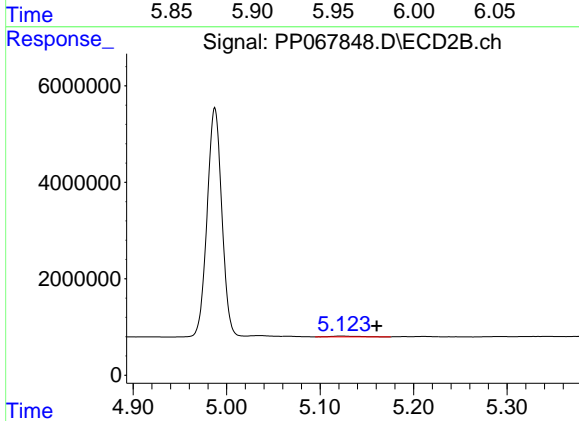
R.T.: 5.675 min  
 Delta R.T.: 0.055 min  
 Response: 165275  
 Conc: 12.29 ng/ml



#16 AR-1242-1

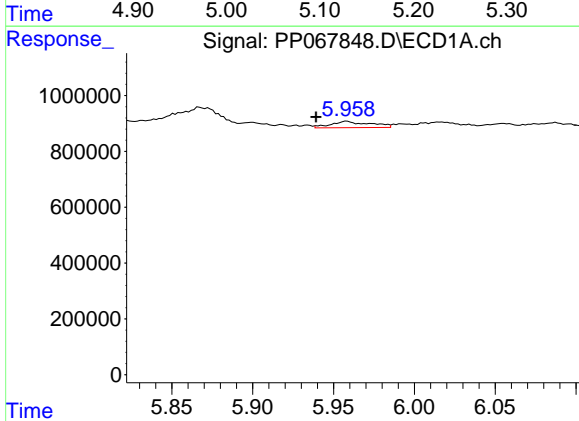
R.T.: 5.958 min  
 Delta R.T.: 0.042 min  
 Response: 375882  
 Conc: 13.45 ng/ml

Instrument :  
 ECD\_P  
 ClientSampleId :  
 WASH-OIL



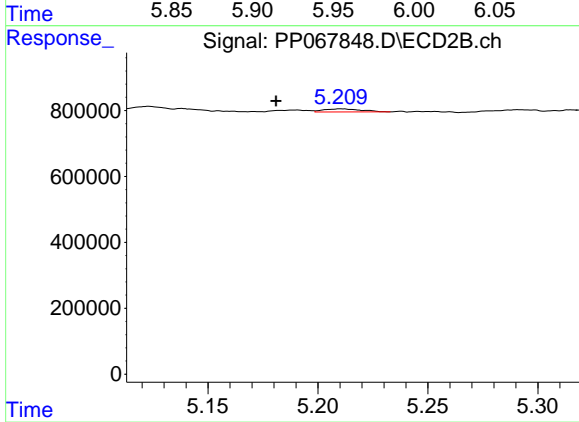
#16 AR-1242-1

R.T.: 5.123 min  
 Delta R.T.: -0.038 min  
 Response: 363618  
 Conc: 12.51 ng/ml



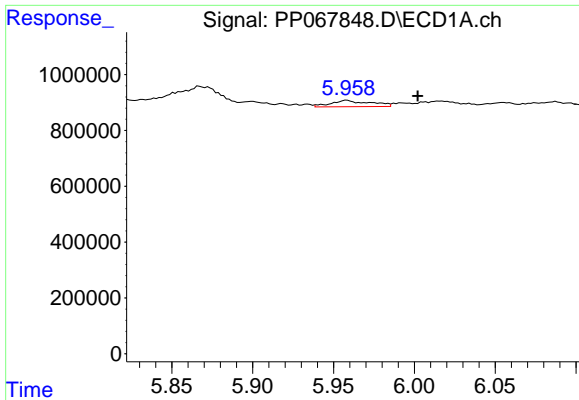
#17 AR-1242-2

R.T.: 5.958 min  
 Delta R.T.: 0.019 min  
 Response: 375882  
 Conc: 9.25 ng/ml



#17 AR-1242-2

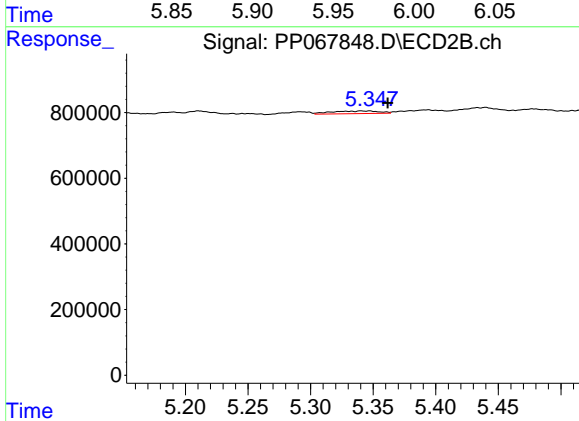
R.T.: 5.211 min  
 Delta R.T.: 0.030 min  
 Response: 108121  
 Conc: 2.69 ng/ml



#18 AR-1242-3

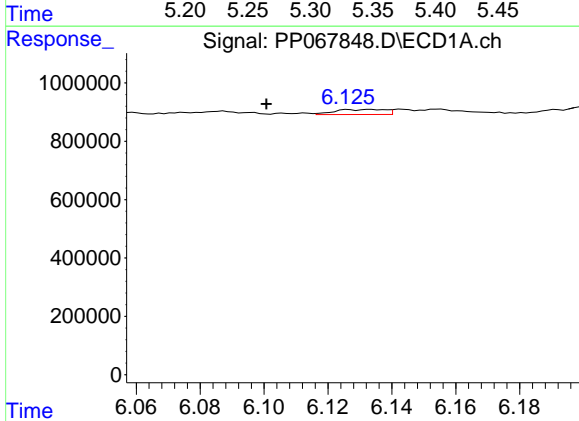
R.T.: 5.958 min  
 Delta R.T.: -0.044 min  
 Response: 375882  
 Conc: 13.94 ng/ml

Instrument :  
 ECD\_P  
 ClientSampleId :  
 WASH-OIL



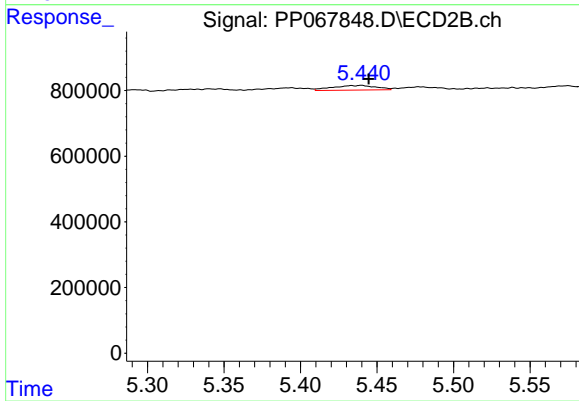
#18 AR-1242-3

R.T.: 5.347 min  
 Delta R.T.: -0.014 min  
 Response: 210417  
 Conc: 9.35 ng/ml



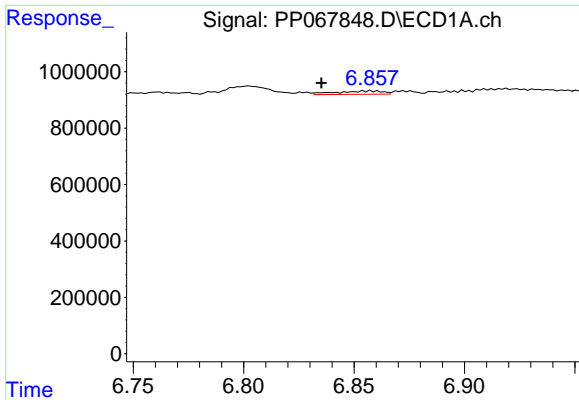
#19 AR-1242-4

R.T.: 6.133 min  
 Delta R.T.: 0.033 min  
 Response: 191690  
 Conc: 8.94 ng/ml



#19 AR-1242-4

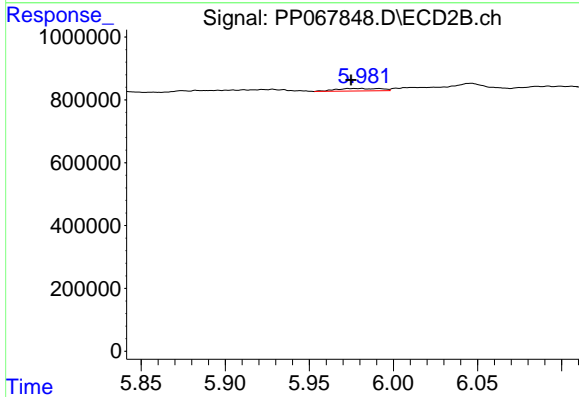
R.T.: 5.440 min  
 Delta R.T.: -0.005 min  
 Response: 279387  
 Conc: 11.77 ng/ml



#20 AR-1242-5

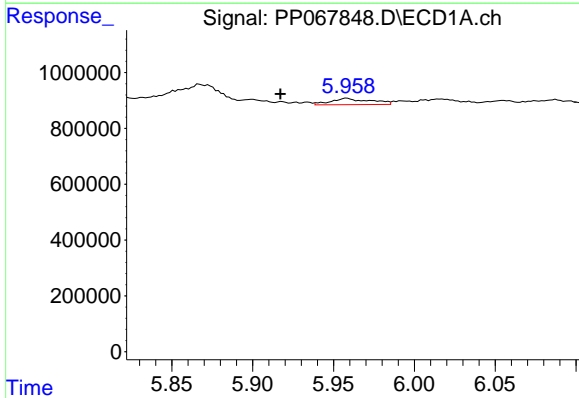
R.T.: 6.858 min  
 Delta R.T.: 0.022 min  
 Response: 174904  
 Conc: 7.25 ng/ml

Instrument :  
 ECD\_P  
 ClientSampleId :  
 WASH-OIL



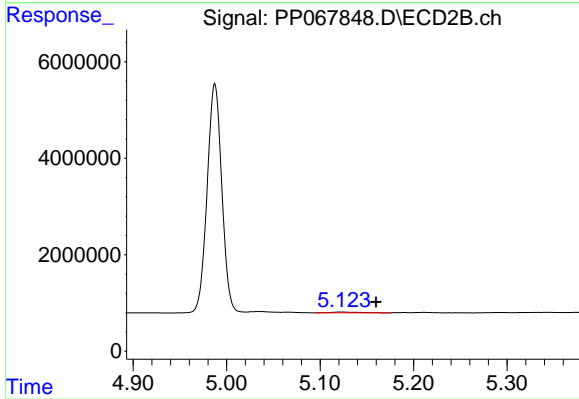
#20 AR-1242-5

R.T.: 5.981 min  
 Delta R.T.: 0.006 min  
 Response: 148547  
 Conc: 5.18 ng/ml



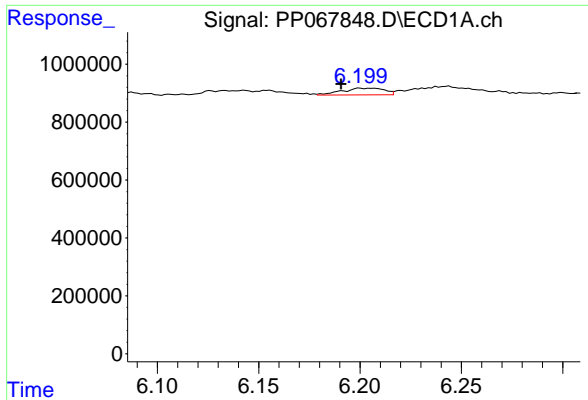
#21 AR-1248-1

R.T.: 5.958 min  
 Delta R.T.: 0.041 min  
 Response: 375882  
 Conc: 17.55 ng/ml



#21 AR-1248-1

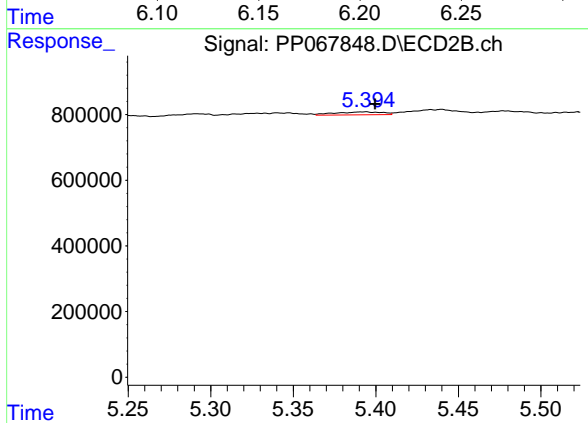
R.T.: 5.123 min  
 Delta R.T.: -0.037 min  
 Response: 363618  
 Conc: 16.04 ng/ml



#22 AR-1248-2

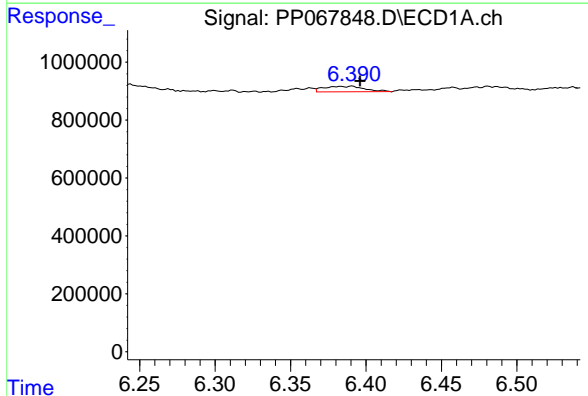
R.T.: 6.200 min  
 Delta R.T.: 0.009 min  
 Response: 336119  
 Conc: 10.00 ng/ml

Instrument :  
 ECD\_P  
 ClientSampleId :  
 WASH-OIL



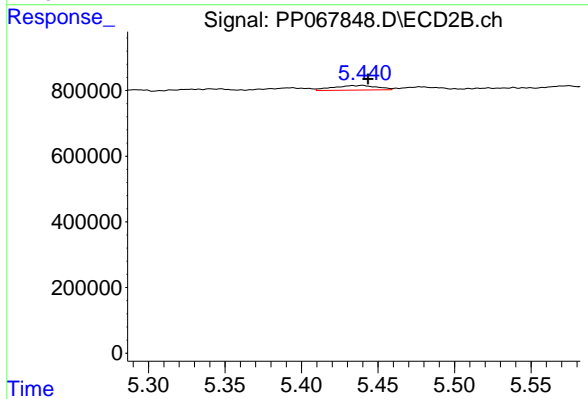
#22 AR-1248-2

R.T.: 5.394 min  
 Delta R.T.: -0.006 min  
 Response: 175752  
 Conc: 5.31 ng/ml



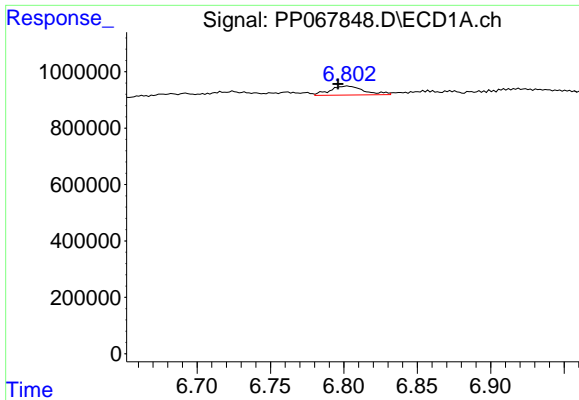
#23 AR-1248-3

R.T.: 6.391 min  
 Delta R.T.: -0.005 min  
 Response: 362848  
 Conc: 9.91 ng/ml



#23 AR-1248-3

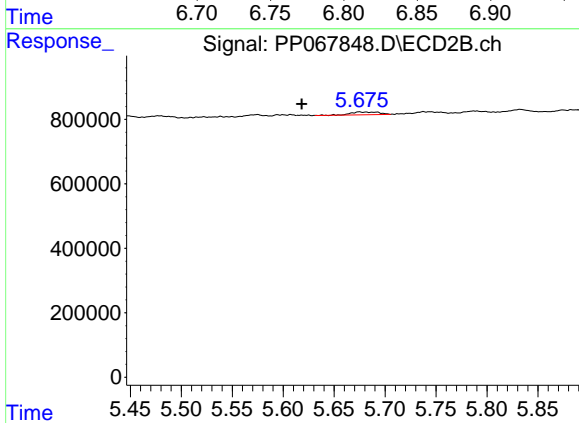
R.T.: 5.440 min  
 Delta R.T.: -0.004 min  
 Response: 279387  
 Conc: 8.10 ng/ml



#24 AR-1248-4

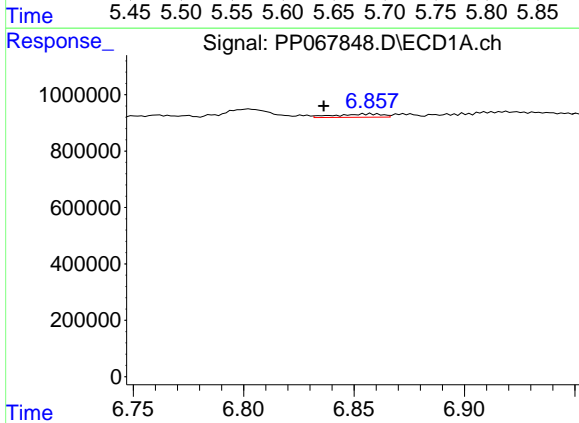
R.T.: 6.803 min  
 Delta R.T.: 0.006 min  
 Response: 521781  
 Conc: 12.90 ng/ml

Instrument :  
 ECD\_P  
 ClientSampleId :  
 WASH-OIL



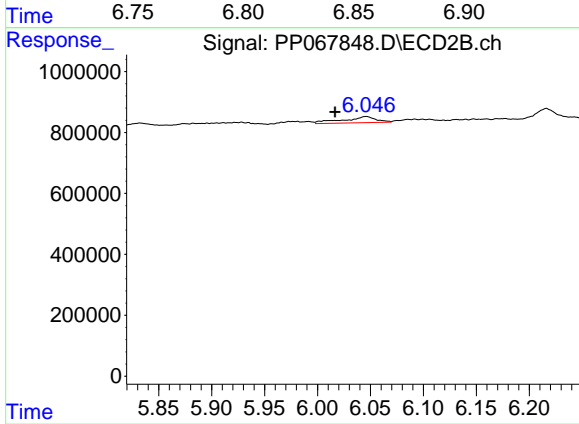
#24 AR-1248-4

R.T.: 5.675 min  
 Delta R.T.: 0.056 min  
 Response: 165275  
 Conc: 4.04 ng/ml



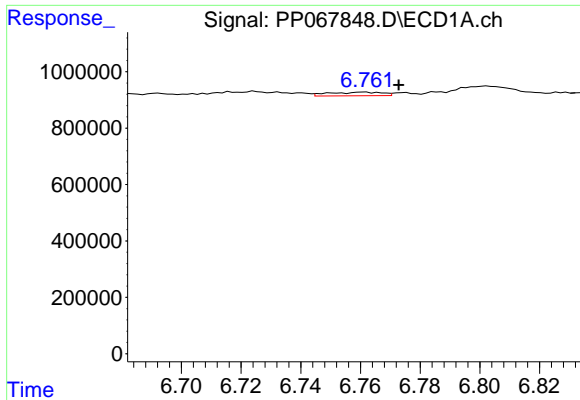
#25 AR-1248-5

R.T.: 6.858 min  
 Delta R.T.: 0.022 min  
 Response: 174904  
 Conc: 4.41 ng/ml



#25 AR-1248-5

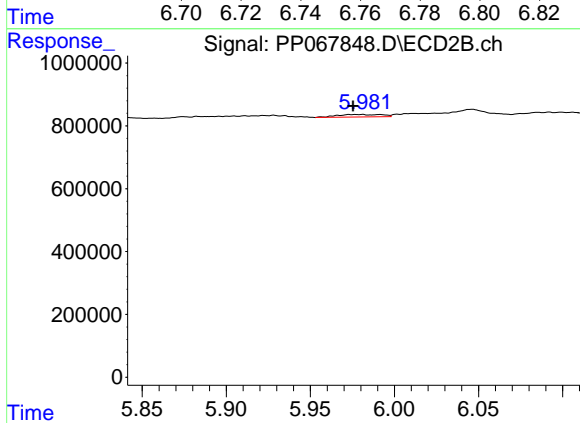
R.T.: 6.046 min  
 Delta R.T.: 0.029 min  
 Response: 430876  
 Conc: 11.51 ng/ml



#26 AR-1254-1

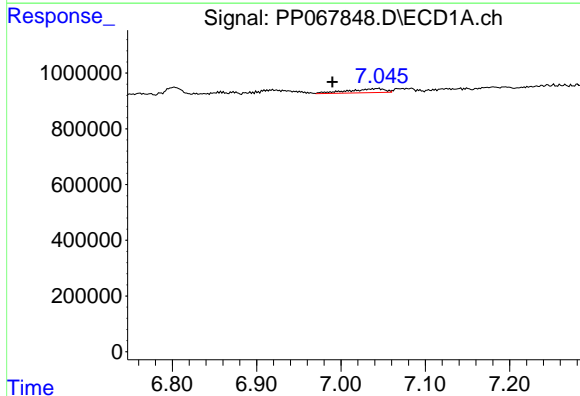
R.T.: 6.761 min  
 Delta R.T.: -0.012 min  
 Response: 159649  
 Conc: 3.56 ng/ml

Instrument :  
 ECD\_P  
 ClientSampleId :  
 WASH-OIL



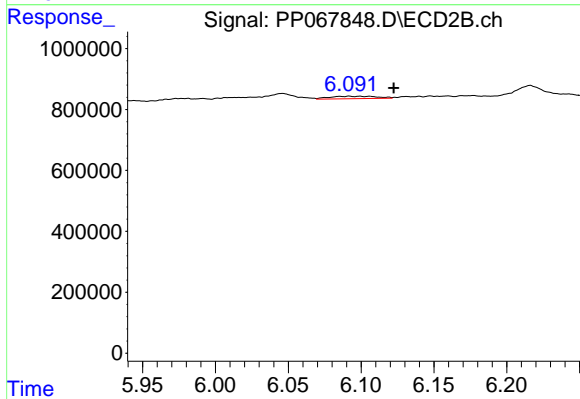
#26 AR-1254-1

R.T.: 5.981 min  
 Delta R.T.: 0.005 min  
 Response: 148547  
 Conc: 2.51 ng/ml



#27 AR-1254-2

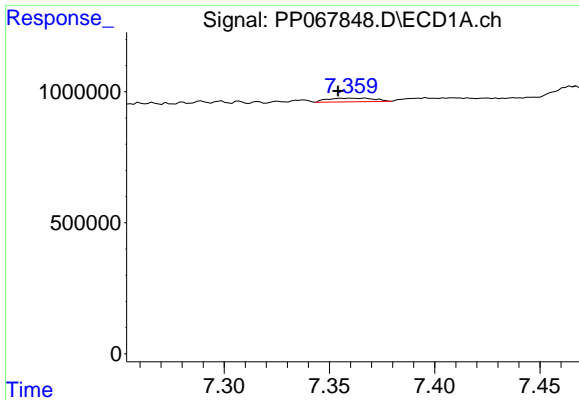
R.T.: 7.045 min  
 Delta R.T.: 0.055 min  
 Response: 429668  
 Conc: 6.50 ng/ml



#27 AR-1254-2

R.T.: 6.092 min  
 Delta R.T.: -0.030 min  
 Response: 179350  
 Conc: 3.42 ng/ml

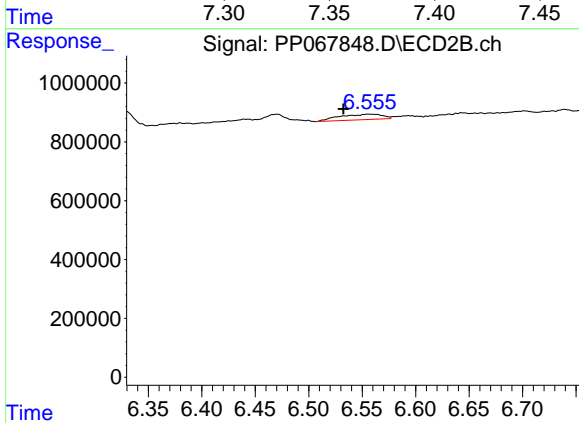




#28 AR-1254-3

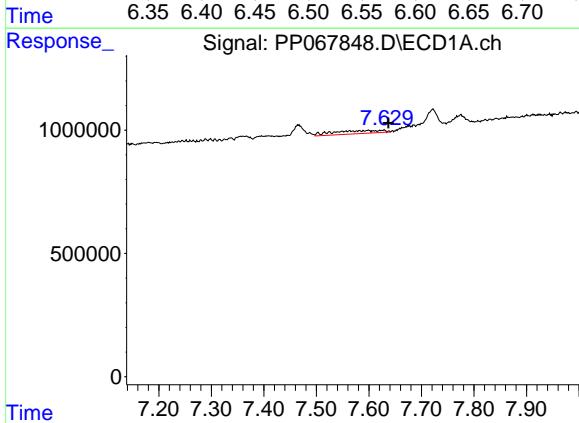
R.T.: 7.359 min  
 Delta R.T.: 0.005 min  
 Response: 212868  
 Conc: 3.06 ng/ml

Instrument :  
 ECD\_P  
 ClientSampleId :  
 WASH-OIL



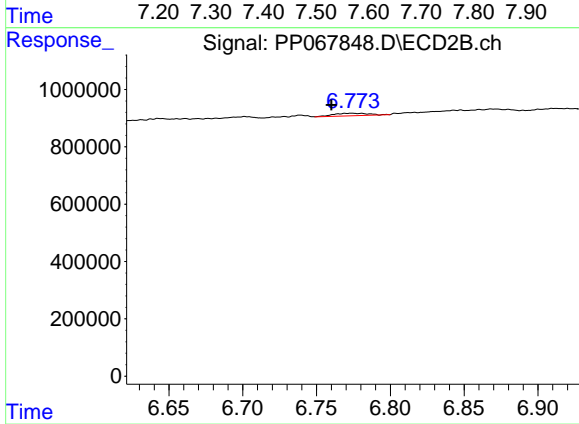
#28 AR-1254-3

R.T.: 6.556 min  
 Delta R.T.: 0.024 min  
 Response: 520811  
 Conc: 6.26 ng/ml



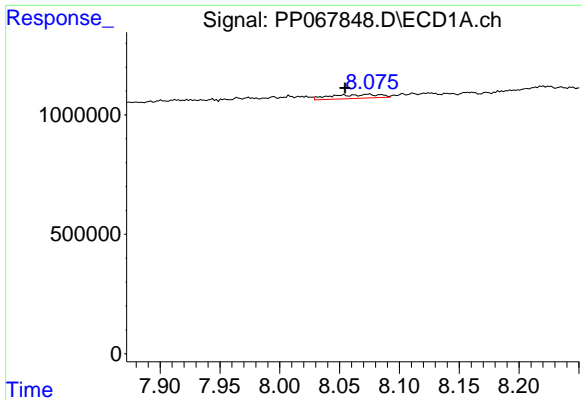
#29 AR-1254-4

R.T.: 7.628 min  
 Delta R.T.: -0.009 min  
 Response: 811037  
 Conc: 16.25 ng/ml



#29 AR-1254-4

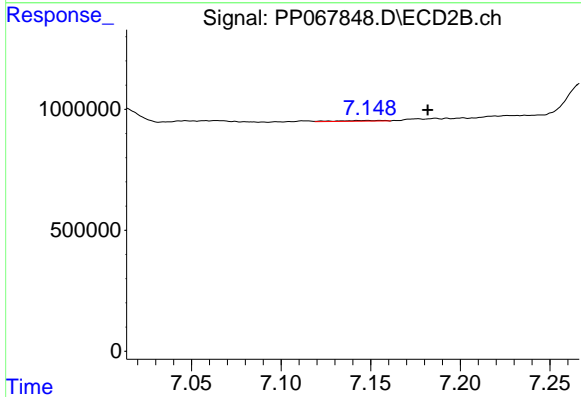
R.T.: 6.774 min  
 Delta R.T.: 0.014 min  
 Response: 143367  
 Conc: 2.97 ng/ml



#30 AR-1254-5

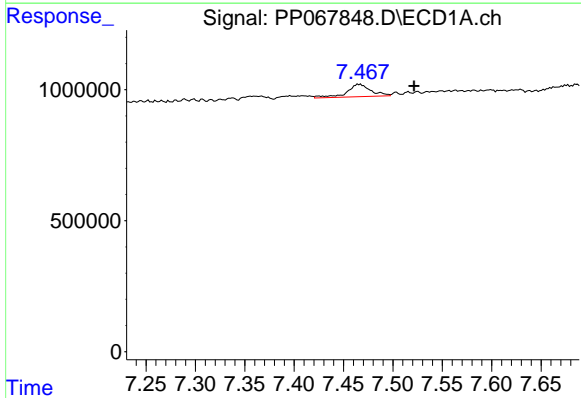
R.T.: 8.074 min  
 Delta R.T.: 0.020 min  
 Response: 480746  
 Conc: 8.11 ng/ml

Instrument :  
 ECD\_P  
 ClientSampleId :  
 WASH-OIL



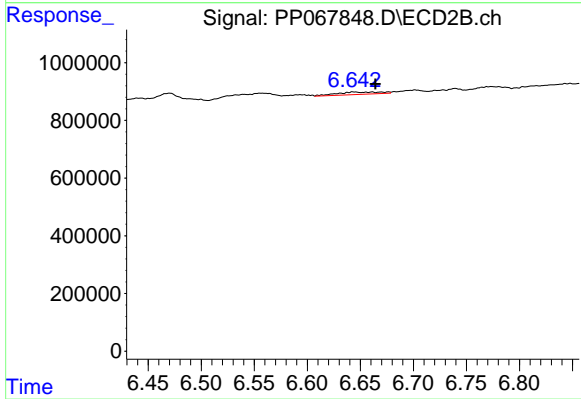
#30 AR-1254-5

R.T.: 7.148 min  
 Delta R.T.: -0.034 min  
 Response: 52744  
 Conc: 0.72 ng/ml



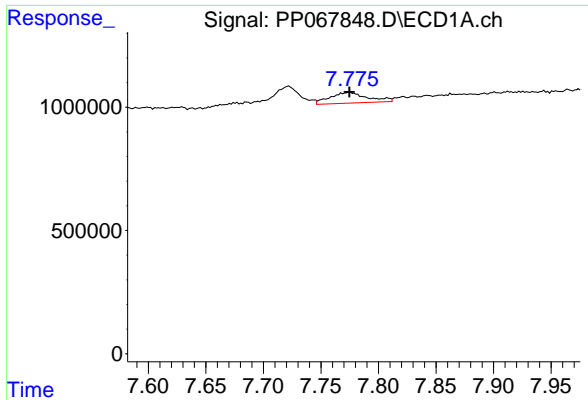
#31 AR-1260-1

R.T.: 7.466 min  
 Delta R.T.: -0.055 min  
 Response: 805681  
 Conc: 14.91 ng/ml



#31 AR-1260-1

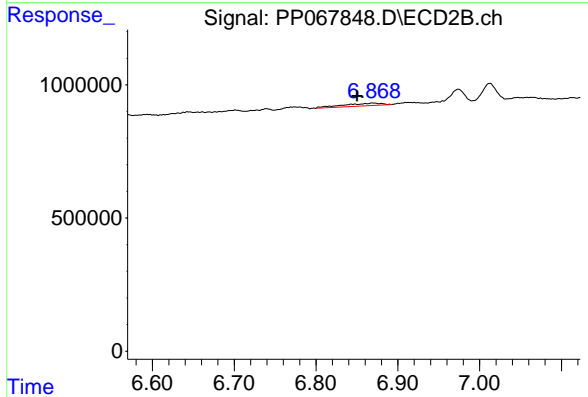
R.T.: 6.644 min  
 Delta R.T.: -0.020 min  
 Response: 243379  
 Conc: 4.27 ng/ml



#32 AR-1260-2

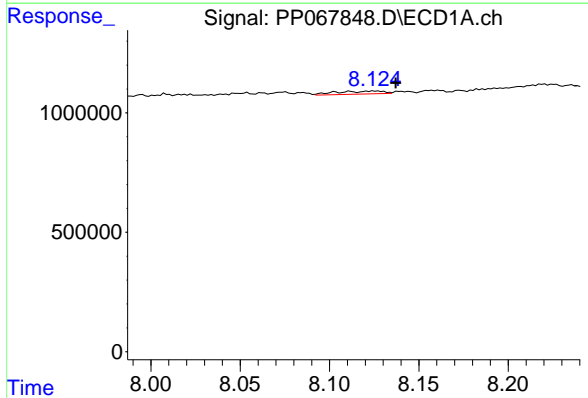
R.T.: 7.775 min  
 Delta R.T.: 0.000 min  
 Response: 981185  
 Conc: 15.51 ng/ml

Instrument :  
 ECD\_P  
 ClientSampleId :  
 WASH-OIL



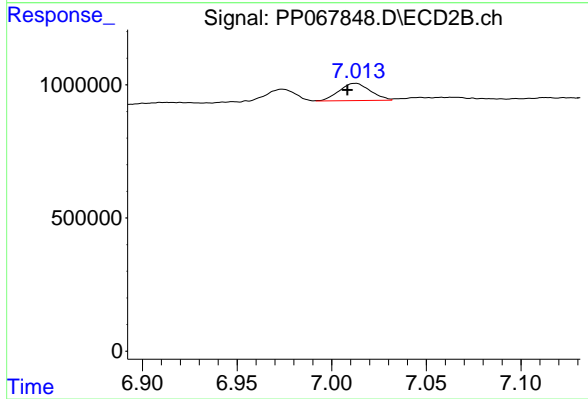
#32 AR-1260-2

R.T.: 6.869 min  
 Delta R.T.: 0.019 min  
 Response: 325781  
 Conc: 4.88 ng/ml



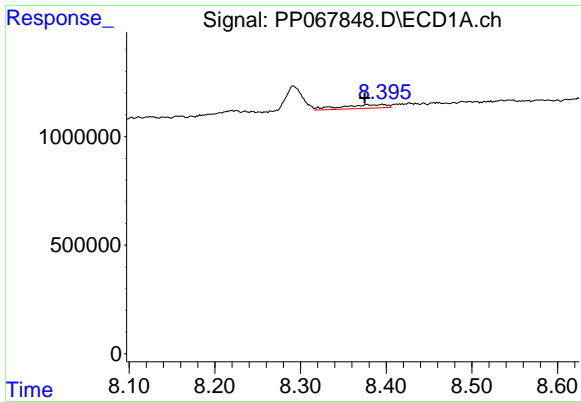
#33 AR-1260-3

R.T.: 8.125 min  
 Delta R.T.: -0.012 min  
 Response: 234848  
 Conc: 4.53 ng/ml



#33 AR-1260-3

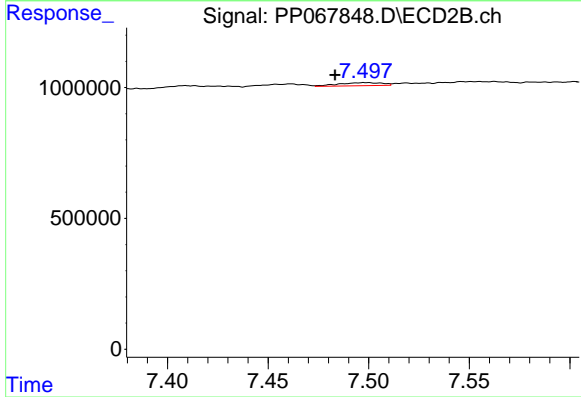
R.T.: 7.013 min  
 Delta R.T.: 0.004 min  
 Response: 750041  
 Conc: 11.77 ng/ml



#34 AR-1260-4

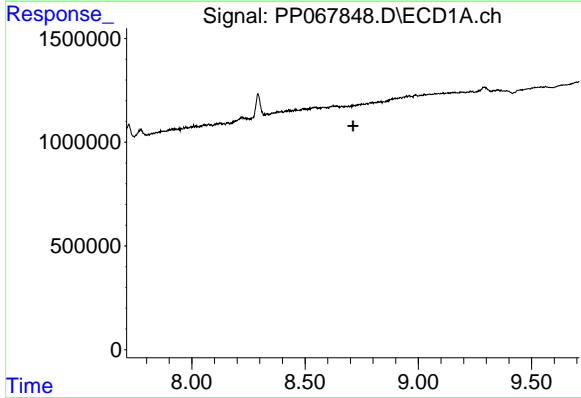
R.T.: 8.378 min  
 Delta R.T.: 0.003 min  
 Response: 636838  
 Conc: 10.58 ng/ml

Instrument :  
 ECD\_P  
 ClientSampleId :  
 WASH-OIL



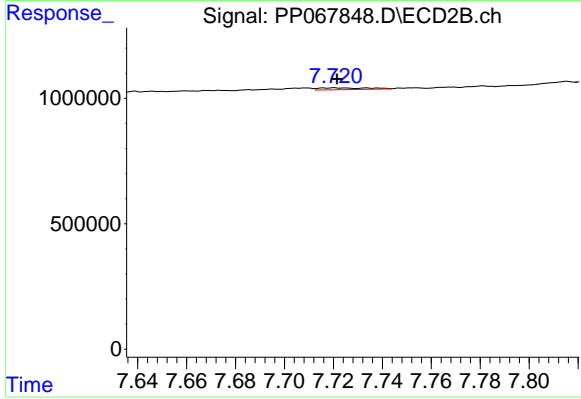
#34 AR-1260-4

R.T.: 7.499 min  
 Delta R.T.: 0.015 min  
 Response: 181947  
 Conc: 3.29 ng/ml



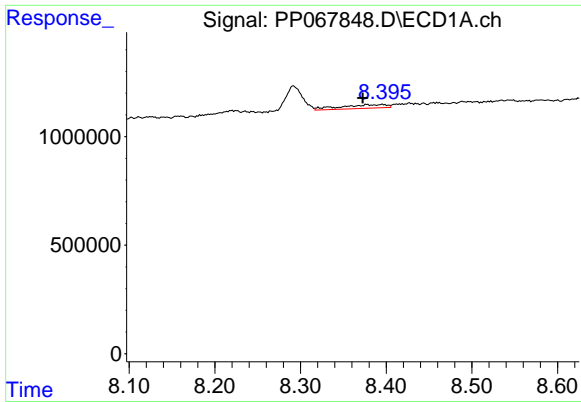
#35 AR-1260-5

R.T.: 0.000 min  
 Exp R.T. : 8.712 min  
 Response: 0  
 Conc: N.D.



#35 AR-1260-5

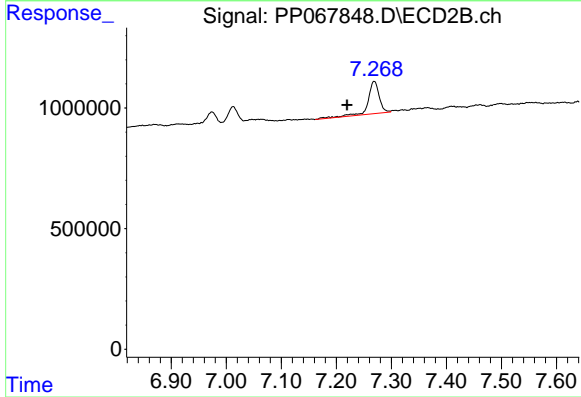
R.T.: 7.720 min  
 Delta R.T.: -0.001 min  
 Response: 96628  
 Conc: 0.79 ng/ml



#36 AR-1262-1

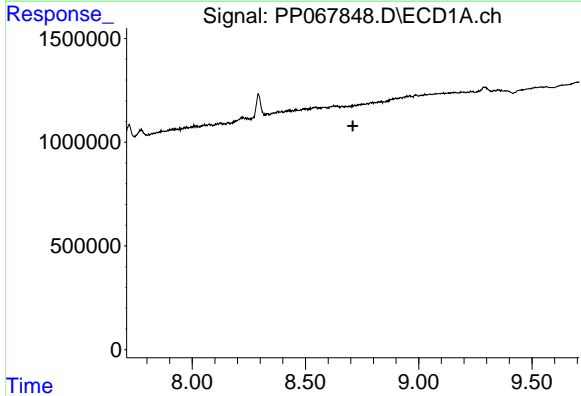
R.T.: 8.378 min  
 Delta R.T.: 0.005 min  
 Response: 636838  
 Conc: 8.87 ng/ml

Instrument :  
 ECD\_P  
 ClientSampleId :  
 WASH-OIL



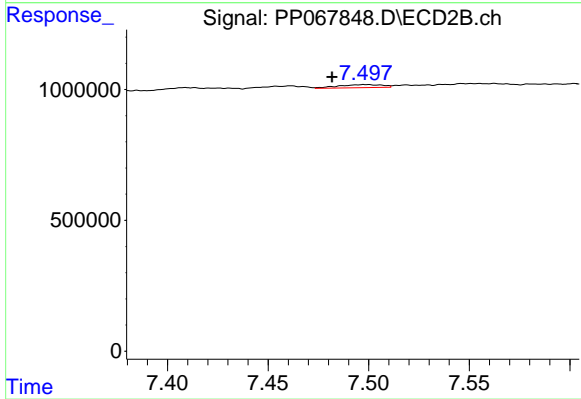
#36 AR-1262-1

R.T.: 7.269 min  
 Delta R.T.: 0.049 min  
 Response: 1897395  
 Conc: 24.12 ng/ml



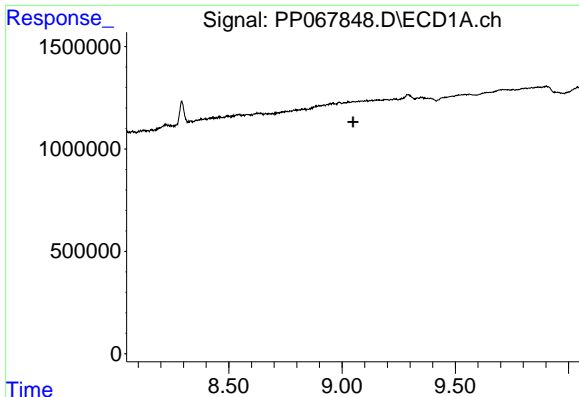
#37 AR-1262-2

R.T.: 0.000 min  
 Exp R.T. : 8.709 min  
 Response: 0  
 Conc: N.D.



#37 AR-1262-2

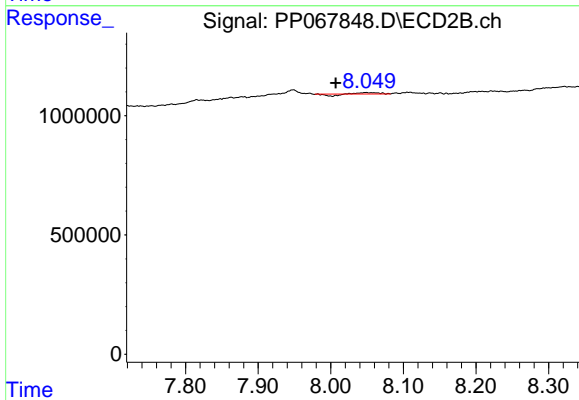
R.T.: 7.499 min  
 Delta R.T.: 0.017 min  
 Response: 181947  
 Conc: 2.56 ng/ml



#38 AR-1262-3

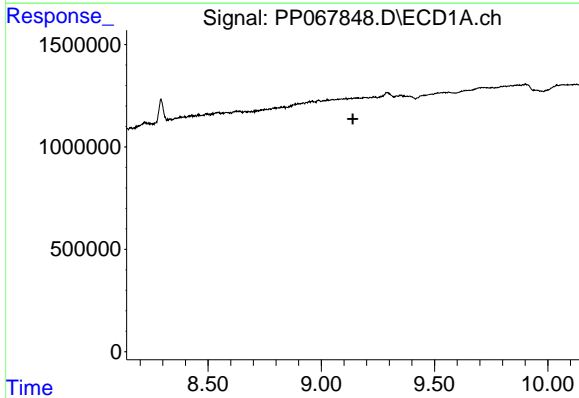
R.T.: 0.000 min  
 Exp R.T. : 9.048 min  
 Response: 0  
 Conc: N.D.

Instrument :  
 ECD\_P  
 ClientSampleId :  
 WASH-OIL



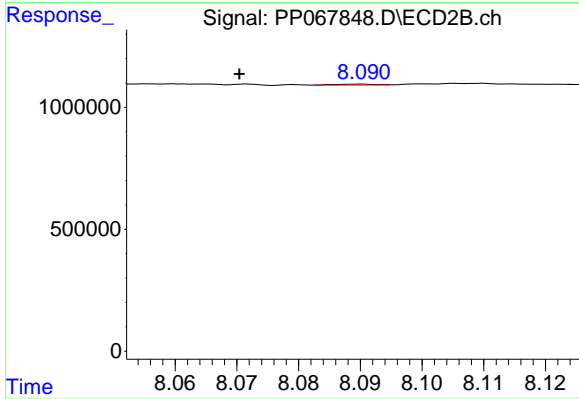
#38 AR-1262-3

R.T.: 8.048 min  
 Delta R.T.: 0.042 min  
 Response: 20399  
 Conc: 0.36 ng/ml



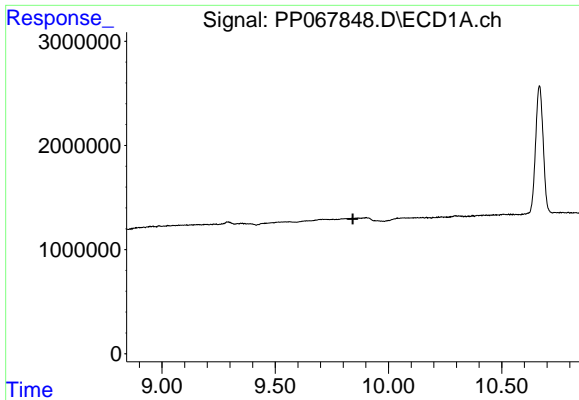
#39 AR-1262-4

R.T.: 0.000 min  
 Exp R.T. : 9.140 min  
 Response: 0  
 Conc: N.D.



#39 AR-1262-4

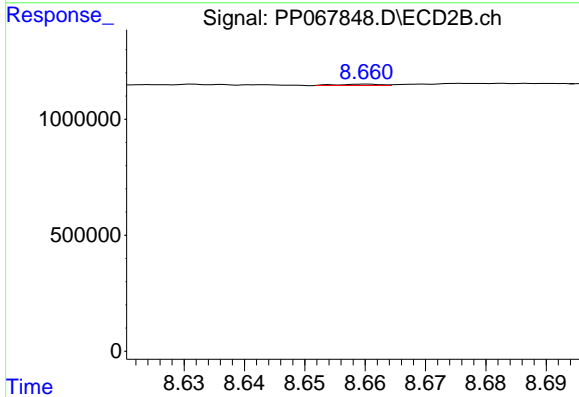
R.T.: 8.090 min  
 Delta R.T.: 0.019 min  
 Response: 18250  
 Conc: 0.18 ng/ml



#40 AR-1262-5

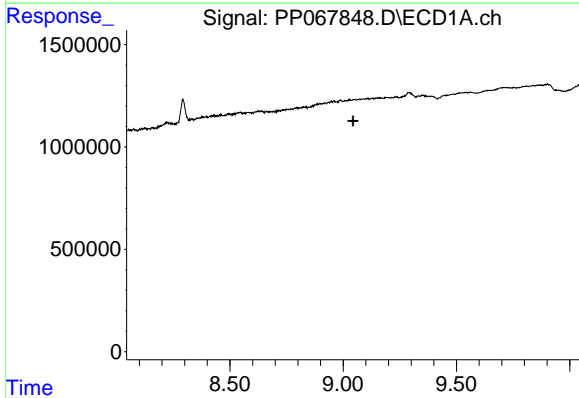
R.T.: 0.000 min  
 Exp R.T.: 9.842 min  
 Response: 0  
 Conc: N.D.

Instrument :  
 ECD\_P  
 ClientSampleId :  
 WASH-OIL



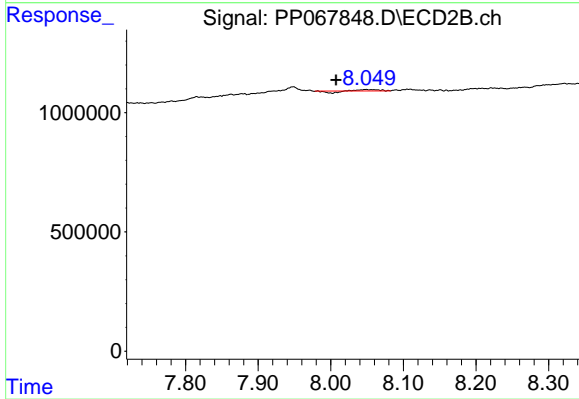
#40 AR-1262-5

R.T.: 8.660 min  
 Delta R.T.: 0.062 min  
 Response: 29542  
 Conc: 0.59 ng/ml



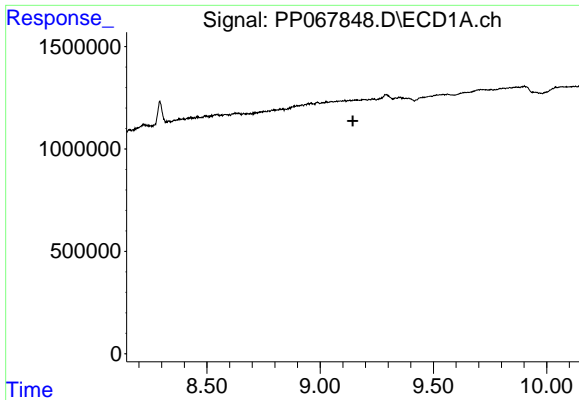
#41 AR-1268-1

R.T.: 0.000 min  
 Exp R.T.: 9.043 min  
 Response: 0  
 Conc: N.D.



#41 AR-1268-1

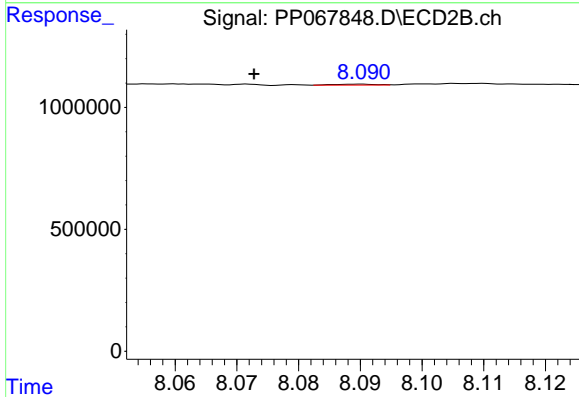
R.T.: 8.048 min  
 Delta R.T.: 0.041 min  
 Response: 20399  
 Conc: 0.13 ng/ml



#42 AR-1268-2

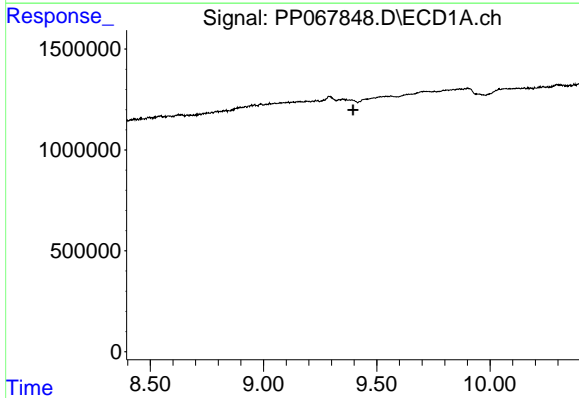
R.T.: 0.000 min  
 Exp R.T.: 9.144 min  
 Response: 0  
 Conc: N.D.

Instrument :  
 ECD\_P  
 ClientSampleId :  
 WASH-OIL



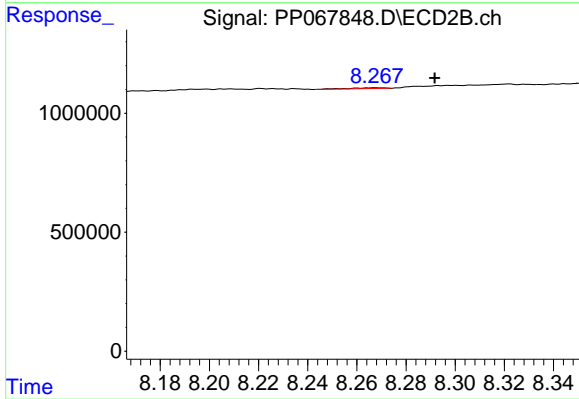
#42 AR-1268-2

R.T.: 8.090 min  
 Delta R.T.: 0.017 min  
 Response: 18250  
 Conc: 0.13 ng/ml



#43 AR-1268-3

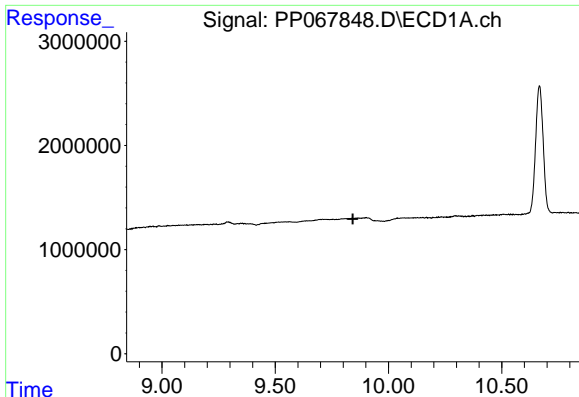
R.T.: 0.000 min  
 Exp R.T.: 9.395 min  
 Response: 0  
 Conc: N.D.



#43 AR-1268-3

R.T.: 8.268 min  
 Delta R.T.: -0.024 min  
 Response: 33238  
 Conc: 0.26 ng/ml

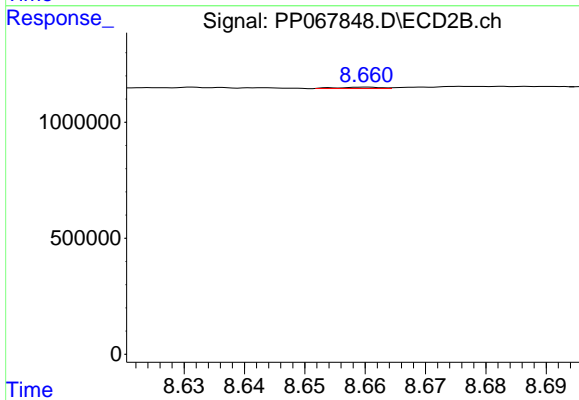




#44 AR-1268-4

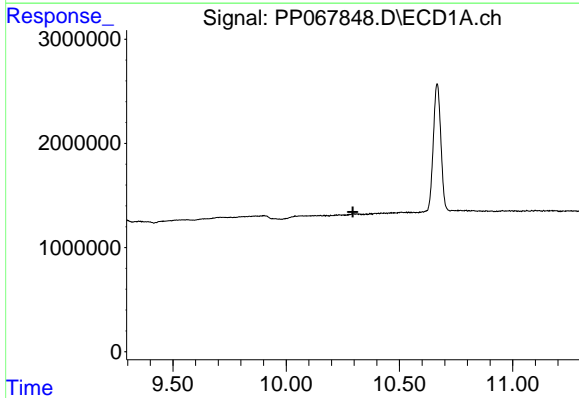
R.T.: 0.000 min  
 Exp R.T.: 9.843 min  
 Response: 0  
 Conc: N.D.

Instrument :  
 ECD\_P  
 ClientSampleId :  
 WASH-OIL



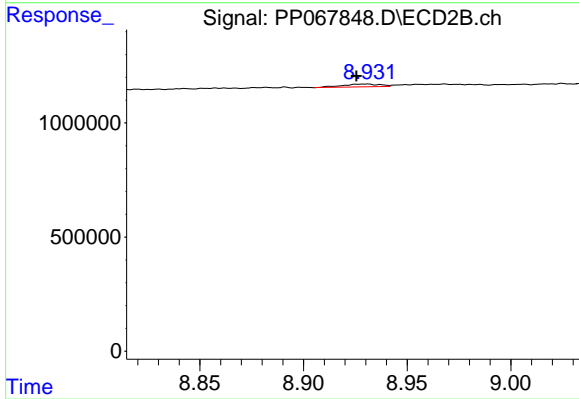
#44 AR-1268-4

R.T.: 8.660 min  
 Delta R.T.: 0.061 min  
 Response: 29542  
 Conc: 0.52 ng/ml



#45 AR-1268-5

R.T.: 0.000 min  
 Exp R.T.: 10.294 min  
 Response: 0  
 Conc: N.D.



#45 AR-1268-5

R.T.: 8.930 min  
 Delta R.T.: 0.004 min  
 Response: 159583  
 Conc: 0.42 ng/ml