

Data Path : Z:\pestpcbsrv\HPCHEM1\ECD\_P\Data\PP101524\  
 Data File : PP067862.D  
 Signal(s) : Signal #1: ECD1A.ch Signal #2: ECD2B.ch  
 Acq On : 15 Oct 2024 19:43  
 Operator : YP\AJ  
 Sample : P4392-18  
 Misc :  
 ALS Vial : 69 Sample Multiplier: 1

Instrument :  
 ECD\_P  
 ClientSampleId :  
 Q119-19A

Integration File signal 1: autoint1.e  
 Integration File signal 2: autoint2.e  
 Quant Time: Oct 16 02:52:10 2024  
 Quant Method : Z:\pestpcbsrv\HPCHEM1\ECD\_P\methods\PP100824.M  
 Quant Title : GC EXTRACTABLES  
 QLast Update : Wed Oct 09 05:48:32 2024  
 Response via : Initial Calibration  
 Integrator: ChemStation

Volume Inj. : 2 µl  
 Signal #1 Phase : ZB-MR1 Signal #2 Phase: ZB-MR2  
 Signal #1 Info : 30Mx0.32mmx 0.50µ Signal #2 Info : 30M x 0.32mm x 0.25µm

Compound	RT#1	RT#2	Resp#1	Resp#2	ng/ml	ng/ml
-----						
System Monitoring Compounds						
1) SA Tetrachlo...	4.754	4.051	18503335	19274039	19.990	19.076
2) SA Decachlor...	10.669	9.214	32365053	31103556	28.112	27.735
Target Compounds						
3) L1 AR-1016-1	5.931	5.155	2141965	1808128	64.777	51.680
4) L1 AR-1016-2	5.931	5.202	2141965	271123	43.919	5.629 #
5) L1 AR-1016-3	5.980	5.385	541418	2051358	17.181	76.153 #
6) L1 AR-1016-4	6.087	5.385	935138	2051358	36.325	85.171 #
7) L1 AR-1016-5	6.423	5.618	13225261	143895	488.614	4.732 #
8) L2 AR-1221-1	4.957	4.250	2331577	565319	182.014	42.924 #
9) L2 AR-1221-2	5.061	4.358	599256	533066	63.342	53.514
10) L2 AR-1221-3	5.141	4.430	761496	435461	26.342	13.988 #
11) L3 AR-1232-1	5.141	4.430	761496	435461	33.312	17.896 #
12) L3 AR-1232-2	5.612f	5.202	1196753	271123	101.566	12.123 #
13) L3 AR-1232-3	5.931	5.385	2141965	2051358	96.160	171.751 #
14) L3 AR-1232-4	6.087	5.489f	935138	12424977	82.848	1077.495 #
15) L3 AR-1232-5	6.214	5.618	306840	143895	33.644	10.698 #
16) L4 AR-1242-1	5.931	5.155	2141965	1808128	76.671	62.185
17) L4 AR-1242-2	5.931	5.202	2141965	271123	52.713	6.753 #
18) L4 AR-1242-3	5.980	5.385	541418	2051358	20.079	91.192 #
19) L4 AR-1242-4	6.087	5.489f	935138	12424977	43.595	523.428 #
20) L4 AR-1242-5	6.819	5.955	4101819	6414502	170.017	223.895 #
21) L5 AR-1248-1	5.931	5.155	2141965	1808128	99.985	79.781
22) L5 AR-1248-2	6.214	5.385	306840	2051358	9.128	61.982 #
23) L5 AR-1248-3	6.423	5.489f	13225261	12424977	361.095	360.409
24) L5 AR-1248-4	6.774	5.618	3566783	143895	88.176	3.513 #
25) L5 AR-1248-5	6.819	6.020	4101819	270672	103.422	7.229 #
26) L6 AR-1254-1	6.774	5.955	3566783	6414502	79.647	108.566 #
27) L6 AR-1254-2	6.986	6.144	13146404	6803007	198.893	129.670 #
28) L6 AR-1254-3	7.362	6.547	25141606	26982618	361.996	324.279
29) L6 AR-1254-4	7.639	6.759	1992021	354535	39.917	7.344 #
30) L6 AR-1254-5	8.074	7.177	1508.2E6	1491.9E6	25436.130	20284.217
31) L7 AR-1260-1	7.521	6.663	7954426	5811691	147.240	102.028 #
32) L7 AR-1260-2	7.757	6.851	215.3E6	6473004	3402.107	97.040 #
33) L7 AR-1260-3	8.134	7.007	8094989	1334375	156.127	20.947 #
34) L7 AR-1260-4	8.374	7.480	8014687	4764465	133.147	86.168 #
35) L7 AR-1260-5	8.711	7.719	11017622	9644856	102.288	78.863
36) L8 AR-1262-1	8.374	7.177f	8014687	1491.9E6	111.670	18963.565 #
37) L8 AR-1262-2	8.711	7.480	11017622	4764465	90.620	67.141 #
38) L8 AR-1262-3	9.053	8.006	9296849	-1887834	105.032	N.D. #
39) L8 AR-1262-4	9.143	8.053	3835435	16551249	54.835	164.793 #
40) L8 AR-1262-5	9.844	8.594	2455562	2303951	52.479	46.063
41) L9 AR-1268-1	9.053	8.006	9296849	-1887834	60.904	N.D. #

Data Path : Z:\pestpcbsrv\HPCHEM1\ECD\_P\Data\PP101524\  
 Data File : PP067862.D  
 Signal(s) : Signal #1: ECD1A.ch Signal #2: ECD2B.ch  
 Acq On : 15 Oct 2024 19:43  
 Operator : YP\AJ  
 Sample : P4392-18  
 Misc :  
 ALS Vial : 69 Sample Multiplier: 1

Instrument :  
 ECD\_P  
 ClientSampleId :  
 Q119-19A

Integration File signal 1: autoint1.e  
 Integration File signal 2: autoint2.e  
 Quant Time: Oct 16 02:52:10 2024  
 Quant Method : Z:\pestpcbsrv\HPCHEM1\ECD\_P\methods\PP100824.M  
 Quant Title : GC EXTRACTABLES  
 QLast Update : Wed Oct 09 05:48:32 2024  
 Response via : Initial Calibration  
 Integrator: ChemStation

Volume Inj. : 2 µl  
 Signal #1 Phase : ZB-MR1 Signal #2 Phase: ZB-MR2  
 Signal #1 Info : 30Mx0.32mmx 0.50µ Signal #2 Info : 30M x 0.32mm x 0.25µm

	Compound	RT#1	RT#2	Resp#1	Resp#2	ng/ml	ng/ml
42)	L9 AR-1268-2	9.143	8.053	3835435	16551249	28.079	115.593 #
43)	L9 AR-1268-3	9.397	8.290	2561970	5279928	21.188	41.408 #
44)	L9 AR-1268-4	9.844	8.594	2455562	2303951	48.319	40.795
45)	L9 AR-1268-5	10.296	8.924	13326309	12663490	35.682	33.498

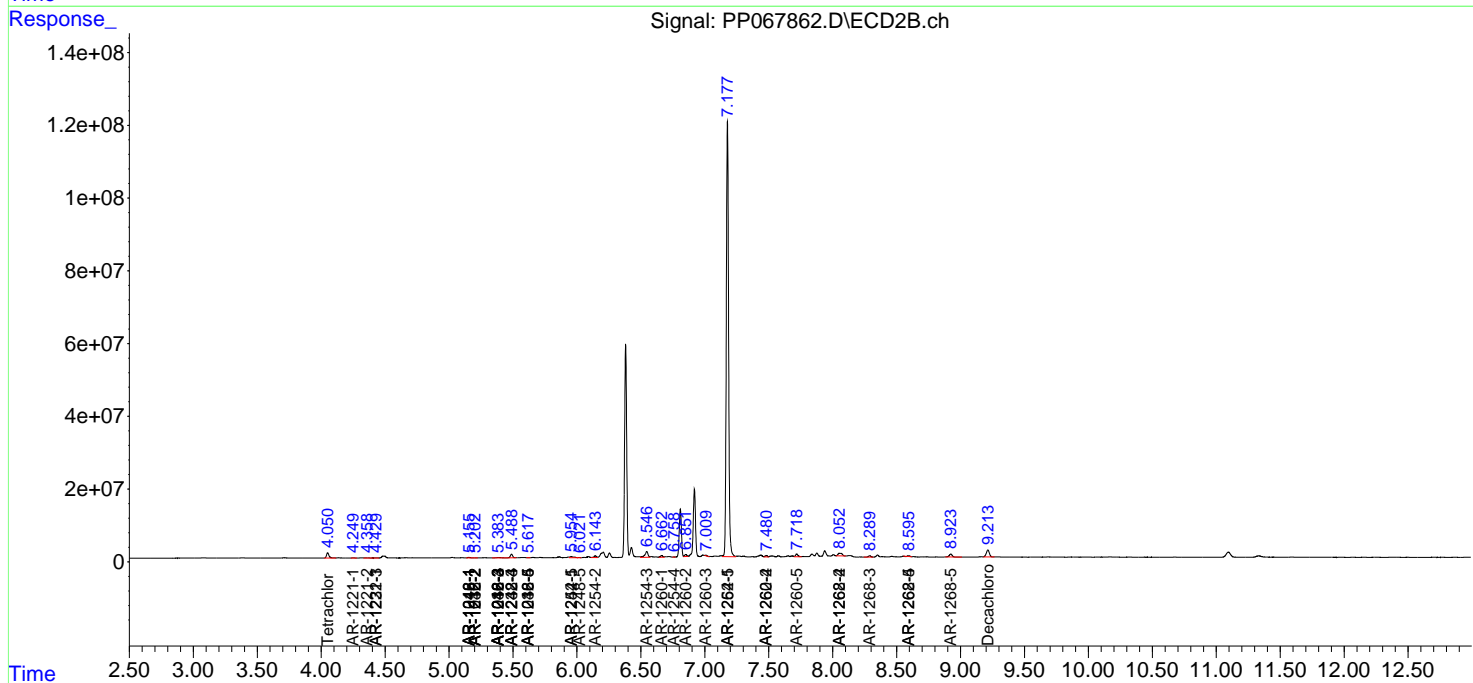
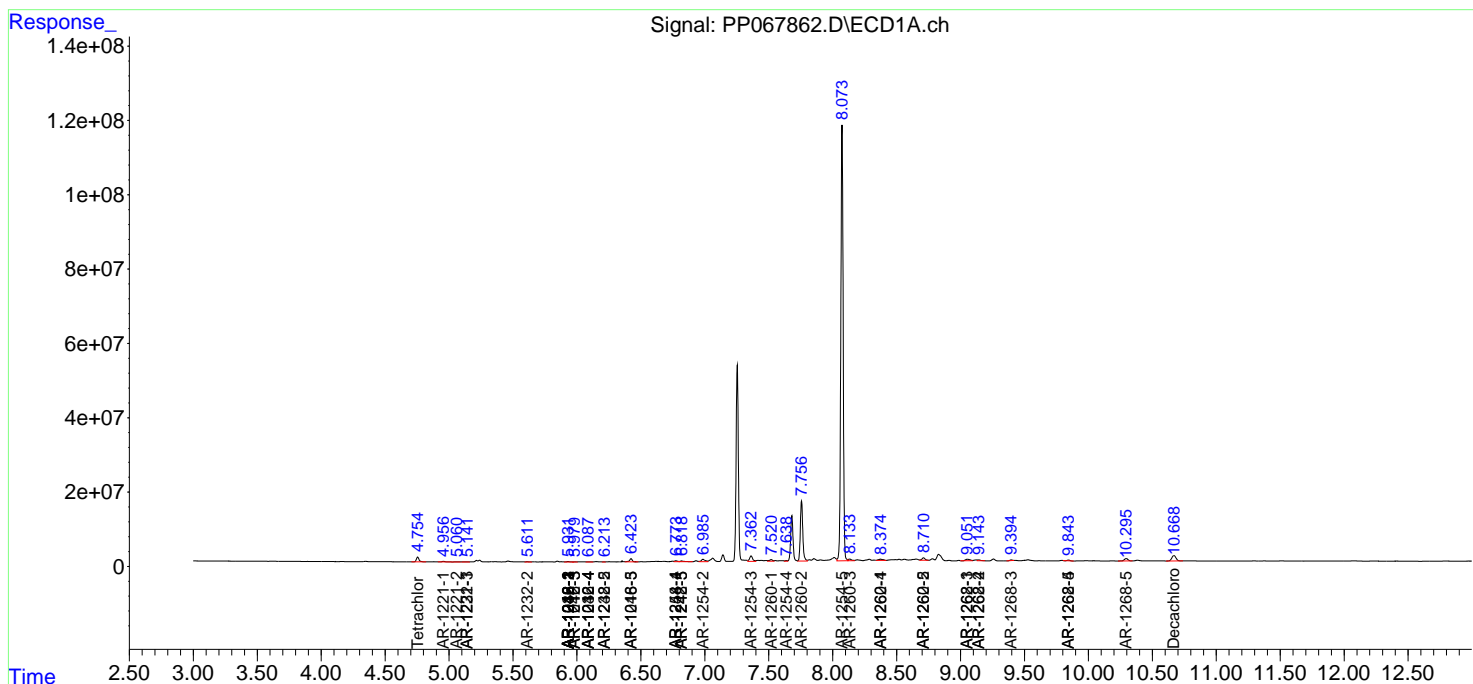
(f)=RT Delta > 1/2 Window (#)=Amounts differ by > 25% (m)=manual int.

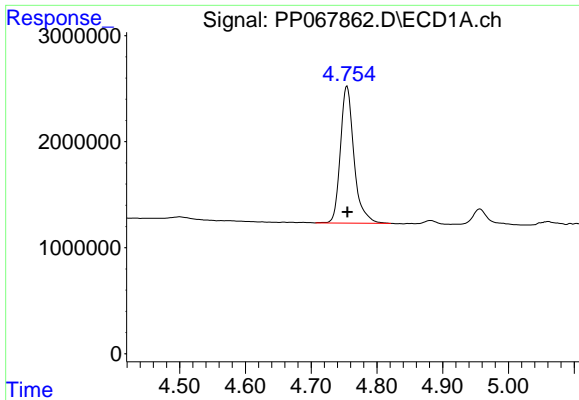
Data Path : Z:\pestpcbsrv\HPCHEM1\ECD\_P\Data\PP101524\  
 Data File : PP067862.D  
 Signal(s) : Signal #1: ECD1A.ch Signal #2: ECD2B.ch  
 Acq On : 15 Oct 2024 19:43  
 Operator : YP\AJ  
 Sample : P4392-18  
 Misc :  
 ALS Vial : 69 Sample Multiplier: 1

Instrument :  
 ECD\_P  
 ClientSampleId :  
 Q119-19A

Integration File signal 1: autoint1.e  
 Integration File signal 2: autoint2.e  
 Quant Time: Oct 16 02:52:10 2024  
 Quant Method : Z:\pestpcbsrv\HPCHEM1\ECD\_P\methods\PP100824.M  
 Quant Title : GC EXTRACTABLES  
 QLast Update : Wed Oct 09 05:48:32 2024  
 Response via : Initial Calibration  
 Integrator: ChemStation

Volume Inj. : 2 µl  
 Signal #1 Phase : ZB-MR1 Signal #2 Phase: ZB-MR2  
 Signal #1 Info : 30Mx0.32mmx 0.50µ Signal #2 Info : 30M x 0.32mm x 0.25µm

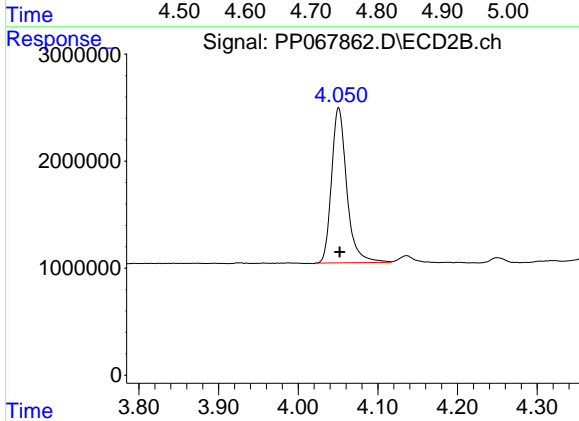




#1 Tetrachloro-m-xylene

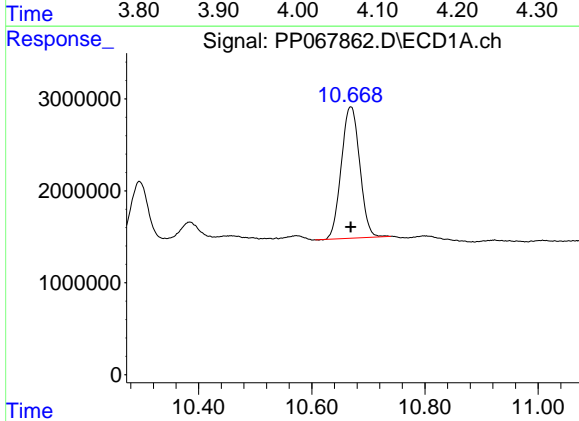
R.T.: 4.754 min  
 Delta R.T.: 0.000 min  
 Response: 18503335  
 Conc: 19.99 ng/ml

Instrument :  
 ECD\_P  
 ClientSampleId :  
 Q119-19A



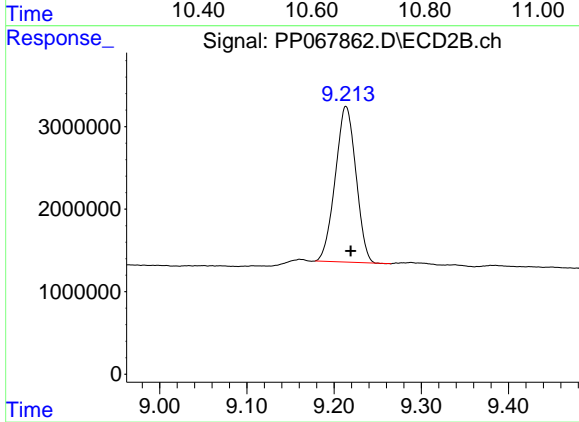
#1 Tetrachloro-m-xylene

R.T.: 4.051 min  
 Delta R.T.: -0.001 min  
 Response: 19274039  
 Conc: 19.08 ng/ml



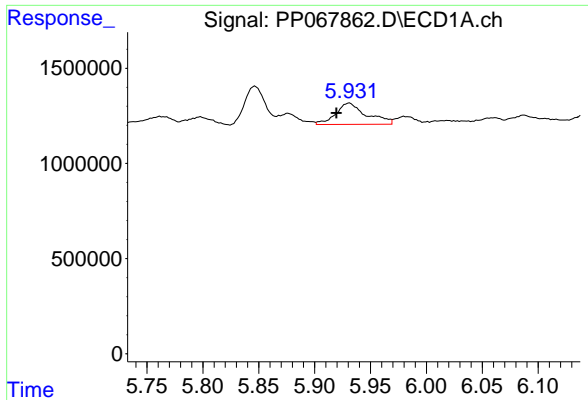
#2 Decachlorobiphenyl

R.T.: 10.669 min  
 Delta R.T.: 0.000 min  
 Response: 32365053  
 Conc: 28.11 ng/ml



#2 Decachlorobiphenyl

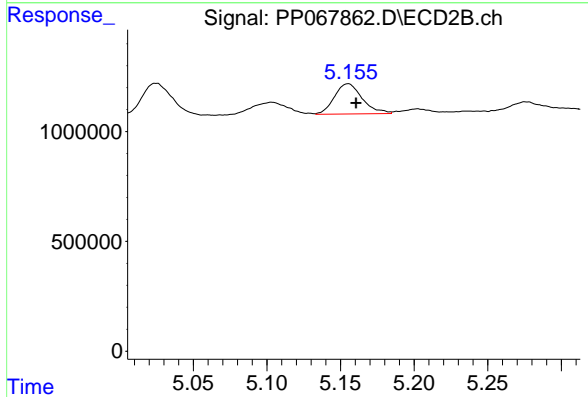
R.T.: 9.214 min  
 Delta R.T.: -0.005 min  
 Response: 31103556  
 Conc: 27.73 ng/ml



#3 AR-1016-1

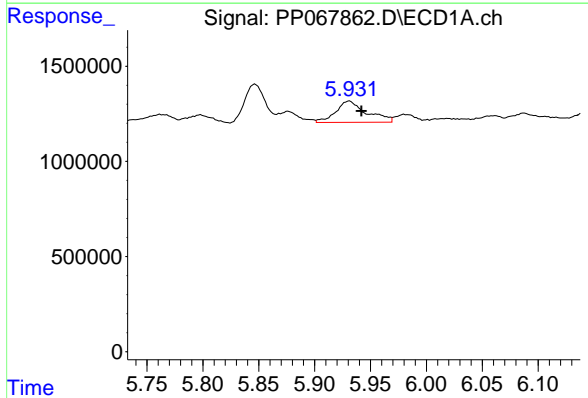
R.T.: 5.931 min  
 Delta R.T.: 0.012 min  
 Response: 2141965  
 Conc: 64.78 ng/ml

Instrument :  
 ECD\_P  
 ClientSampleId :  
 Q119-19A



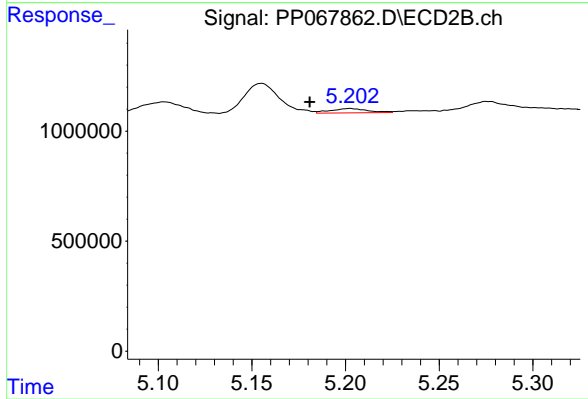
#3 AR-1016-1

R.T.: 5.155 min  
 Delta R.T.: -0.006 min  
 Response: 1808128  
 Conc: 51.68 ng/ml



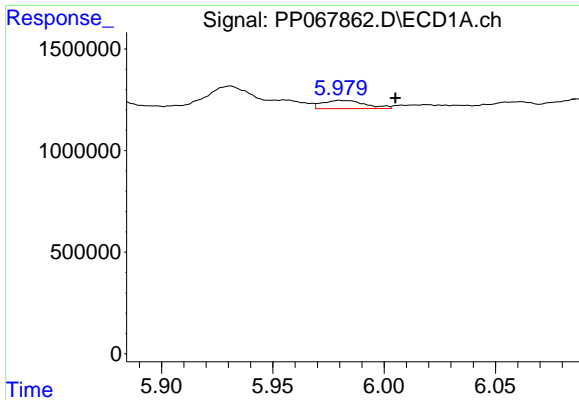
#4 AR-1016-2

R.T.: 5.931 min  
 Delta R.T.: -0.011 min  
 Response: 2141965  
 Conc: 43.92 ng/ml



#4 AR-1016-2

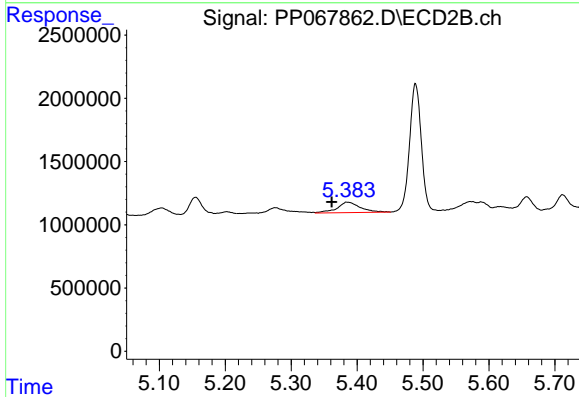
R.T.: 5.202 min  
 Delta R.T.: 0.021 min  
 Response: 271123  
 Conc: 5.63 ng/ml



#5 AR-1016-3

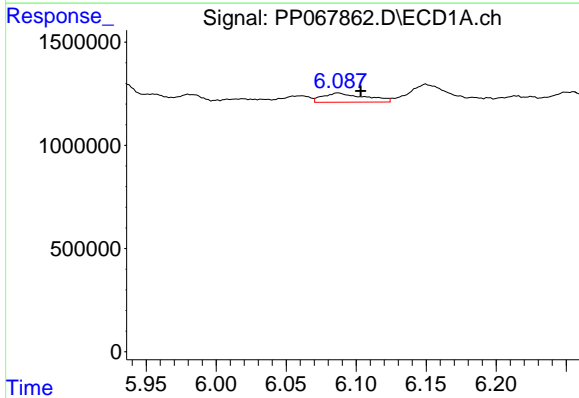
R.T.: 5.980 min  
 Delta R.T.: -0.025 min  
 Response: 541418  
 Conc: 17.18 ng/ml

Instrument :  
 ECD\_P  
 ClientSampleId :  
 Q119-19A



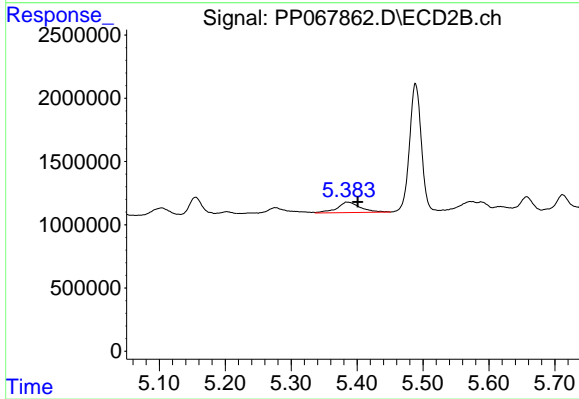
#5 AR-1016-3

R.T.: 5.385 min  
 Delta R.T.: 0.023 min  
 Response: 2051358  
 Conc: 76.15 ng/ml



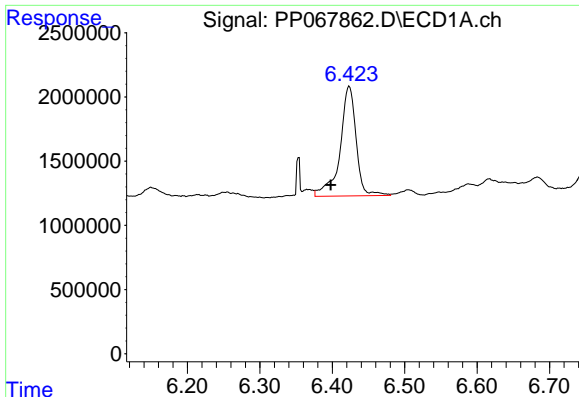
#6 AR-1016-4

R.T.: 6.087 min  
 Delta R.T.: -0.016 min  
 Response: 935138  
 Conc: 36.33 ng/ml



#6 AR-1016-4

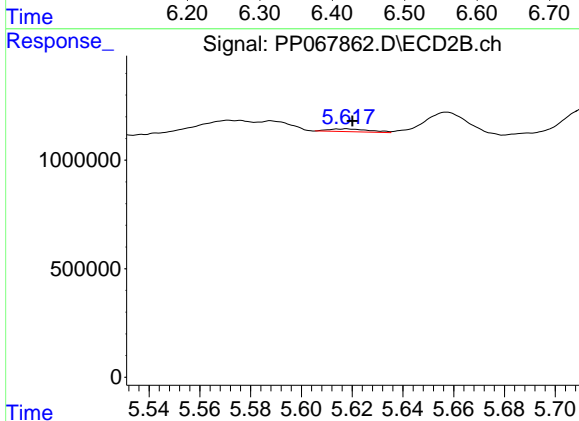
R.T.: 5.385 min  
 Delta R.T.: -0.016 min  
 Response: 2051358  
 Conc: 85.17 ng/ml



#7 AR-1016-5

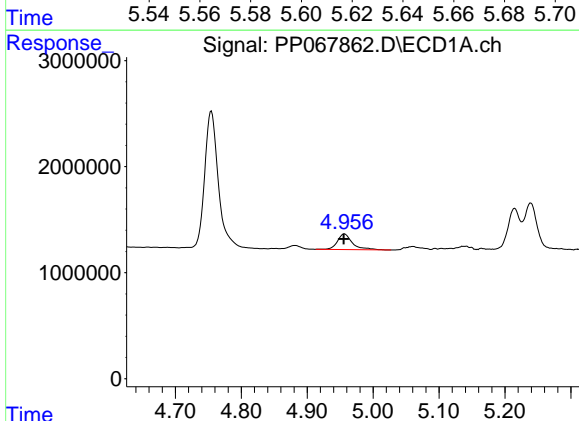
R.T.: 6.423 min  
 Delta R.T.: 0.025 min  
 Response: 13225261  
 Conc: 488.61 ng/ml

Instrument :  
 ECD\_P  
 ClientSampleId :  
 Q119-19A



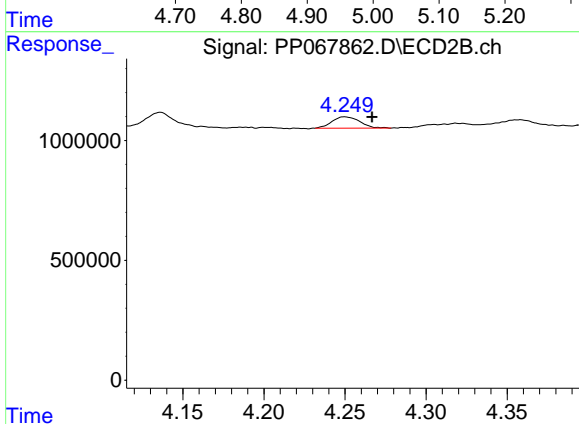
#7 AR-1016-5

R.T.: 5.618 min  
 Delta R.T.: -0.003 min  
 Response: 143895  
 Conc: 4.73 ng/ml



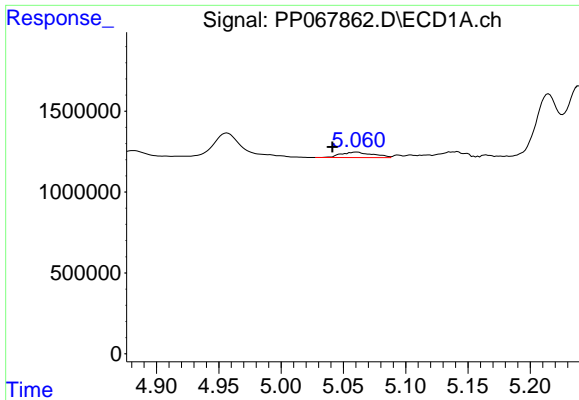
#8 AR-1221-1

R.T.: 4.957 min  
 Delta R.T.: 0.001 min  
 Response: 2331577  
 Conc: 182.01 ng/ml



#8 AR-1221-1

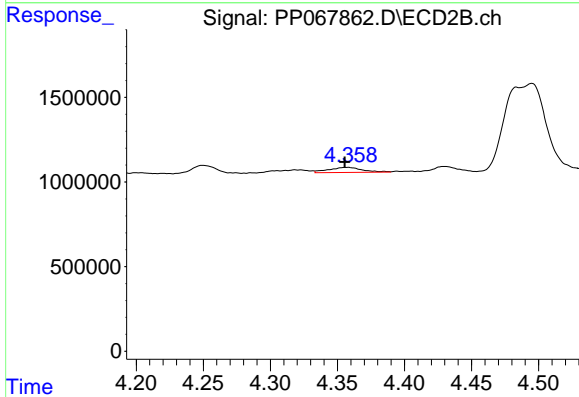
R.T.: 4.250 min  
 Delta R.T.: -0.017 min  
 Response: 565319  
 Conc: 42.92 ng/ml



#9 AR-1221-2

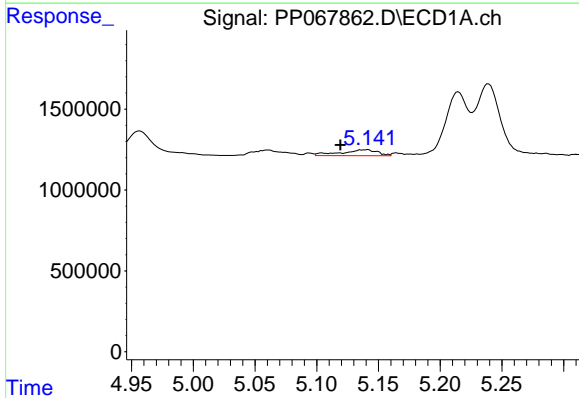
R.T.: 5.061 min  
 Delta R.T.: 0.020 min  
 Response: 599256  
 Conc: 63.34 ng/ml

Instrument :  
 ECD\_P  
 ClientSampleId :  
 Q119-19A



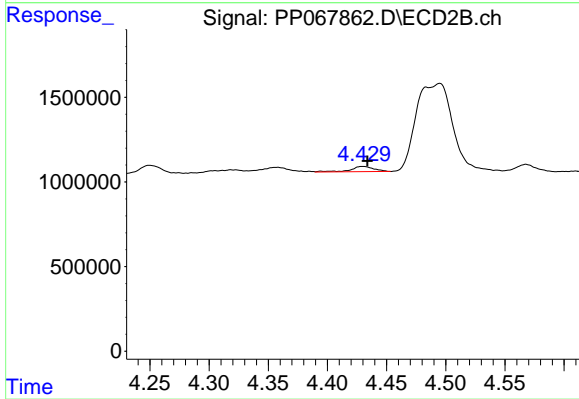
#9 AR-1221-2

R.T.: 4.358 min  
 Delta R.T.: 0.002 min  
 Response: 533066  
 Conc: 53.51 ng/ml



#10 AR-1221-3

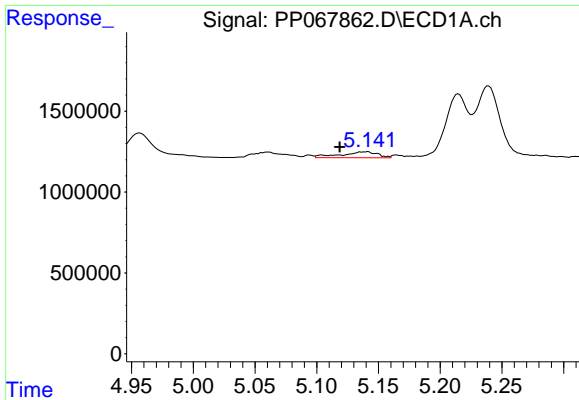
R.T.: 5.141 min  
 Delta R.T.: 0.022 min  
 Response: 761496  
 Conc: 26.34 ng/ml



#10 AR-1221-3

R.T.: 4.430 min  
 Delta R.T.: -0.004 min  
 Response: 435461  
 Conc: 13.99 ng/ml

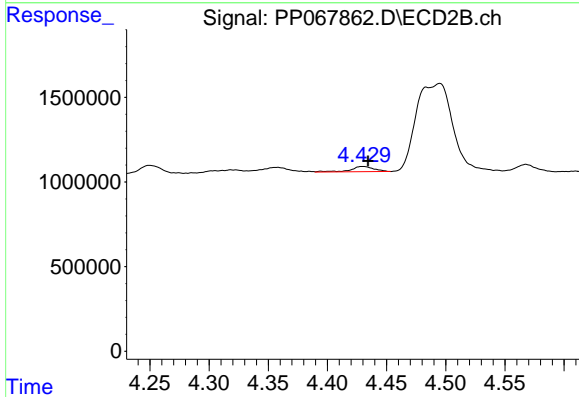




#11 AR-1232-1

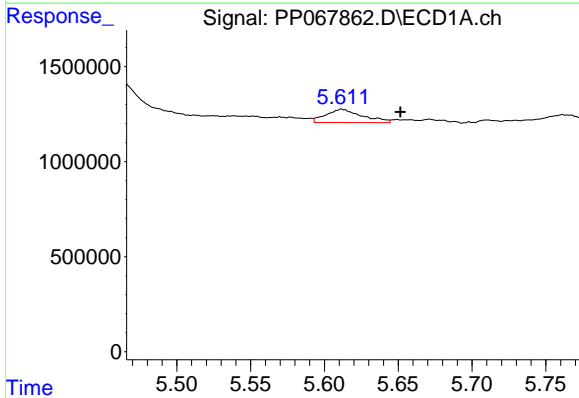
R.T.: 5.141 min  
 Delta R.T.: 0.023 min  
 Response: 761496  
 Conc: 33.31 ng/ml

Instrument :  
 ECD\_P  
 ClientSampleId :  
 Q119-19A



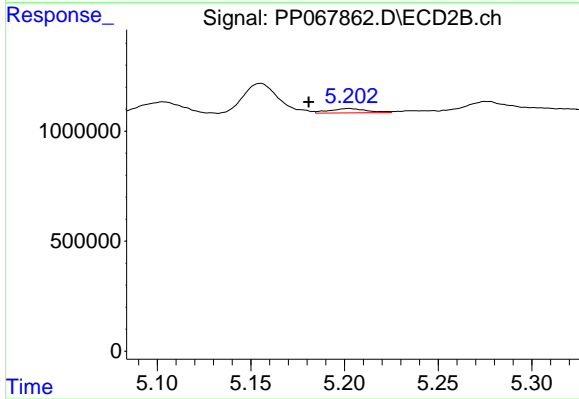
#11 AR-1232-1

R.T.: 4.430 min  
 Delta R.T.: -0.004 min  
 Response: 435461  
 Conc: 17.90 ng/ml



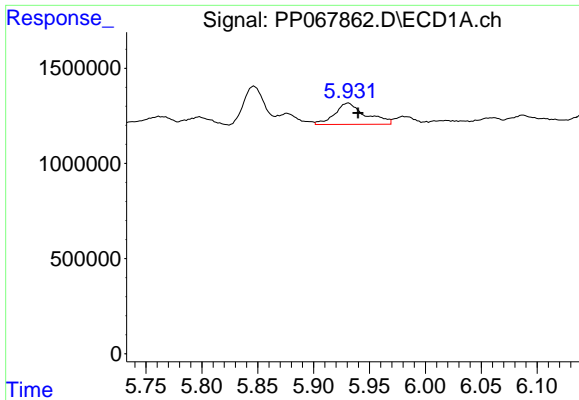
#12 AR-1232-2

R.T.: 5.612 min  
 Delta R.T.: -0.039 min  
 Response: 1196753  
 Conc: 101.57 ng/ml



#12 AR-1232-2

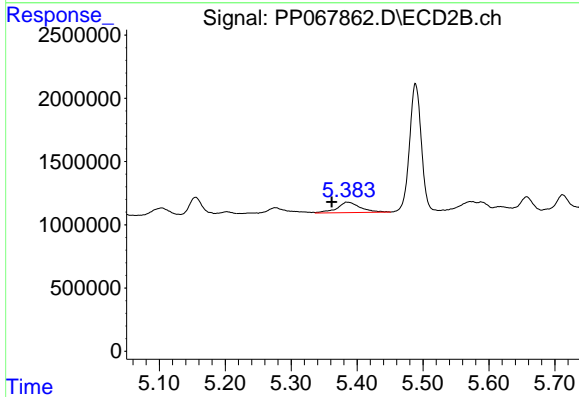
R.T.: 5.202 min  
 Delta R.T.: 0.021 min  
 Response: 271123  
 Conc: 12.12 ng/ml



#13 AR-1232-3

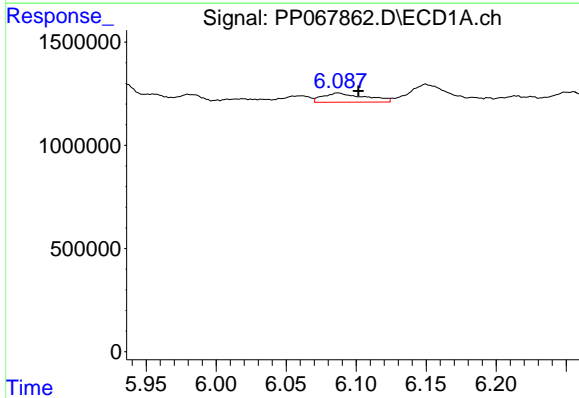
R.T.: 5.931 min  
 Delta R.T.: -0.009 min  
 Response: 2141965  
 Conc: 96.16 ng/ml

Instrument :  
 ECD\_P  
 ClientSampleId :  
 Q119-19A



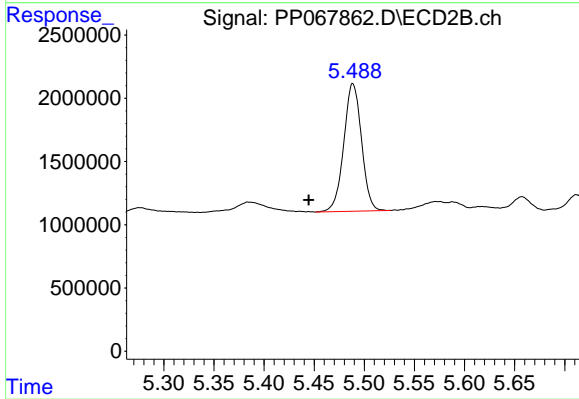
#13 AR-1232-3

R.T.: 5.385 min  
 Delta R.T.: 0.023 min  
 Response: 2051358  
 Conc: 171.75 ng/ml



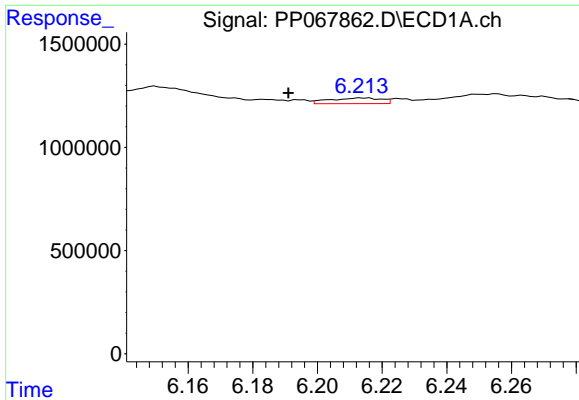
#14 AR-1232-4

R.T.: 6.087 min  
 Delta R.T.: -0.014 min  
 Response: 935138  
 Conc: 82.85 ng/ml



#14 AR-1232-4

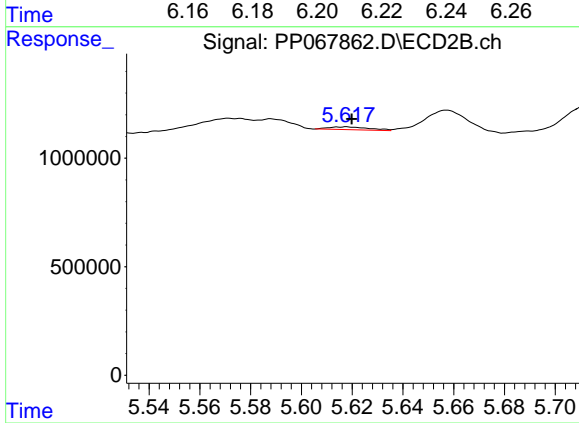
R.T.: 5.489 min  
 Delta R.T.: 0.044 min  
 Response: 12424977  
 Conc: 1077.49 ng/ml



#15 AR-1232-5

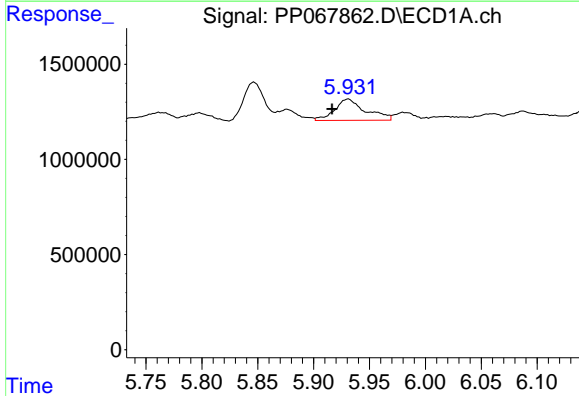
R.T.: 6.214 min  
 Delta R.T.: 0.023 min  
 Response: 306840  
 Conc: 33.64 ng/ml

Instrument :  
 ECD\_P  
 ClientSampleId :  
 Q119-19A



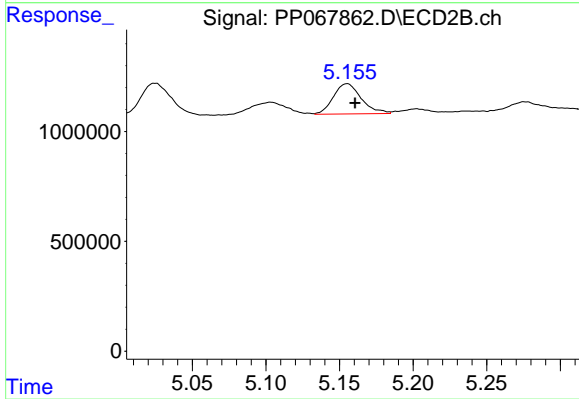
#15 AR-1232-5

R.T.: 5.618 min  
 Delta R.T.: -0.002 min  
 Response: 143895  
 Conc: 10.70 ng/ml



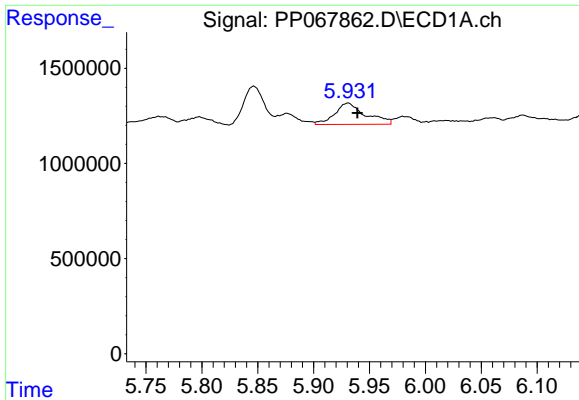
#16 AR-1242-1

R.T.: 5.931 min  
 Delta R.T.: 0.015 min  
 Response: 2141965  
 Conc: 76.67 ng/ml



#16 AR-1242-1

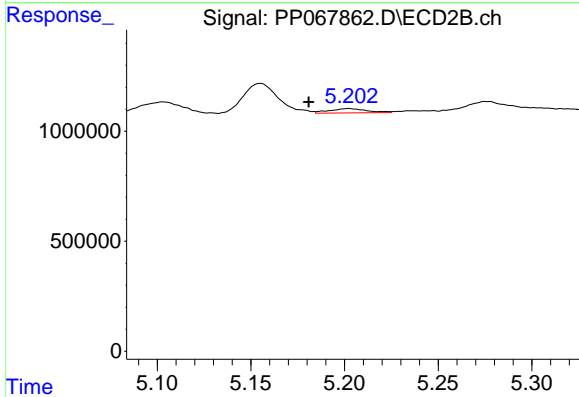
R.T.: 5.155 min  
 Delta R.T.: -0.006 min  
 Response: 1808128  
 Conc: 62.19 ng/ml



#17 AR-1242-2

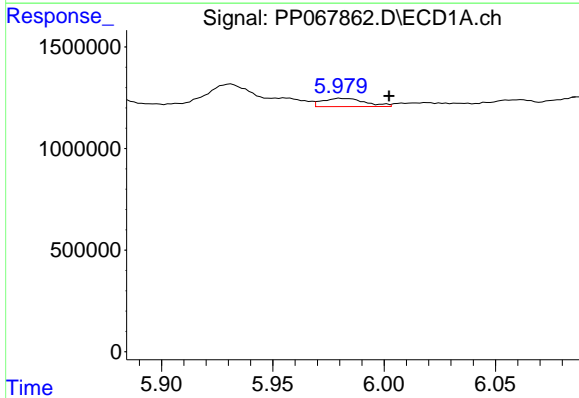
R.T.: 5.931 min  
 Delta R.T.: -0.008 min  
 Response: 2141965  
 Conc: 52.71 ng/ml

Instrument :  
 ECD\_P  
 ClientSampleId :  
 Q119-19A



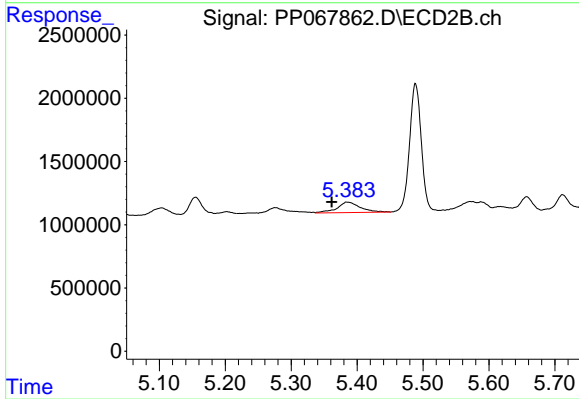
#17 AR-1242-2

R.T.: 5.202 min  
 Delta R.T.: 0.021 min  
 Response: 271123  
 Conc: 6.75 ng/ml



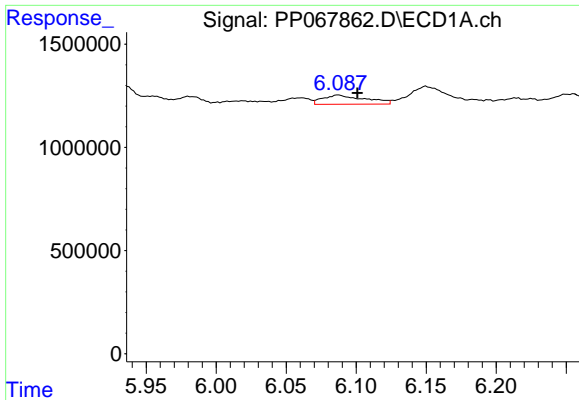
#18 AR-1242-3

R.T.: 5.980 min  
 Delta R.T.: -0.022 min  
 Response: 541418  
 Conc: 20.08 ng/ml



#18 AR-1242-3

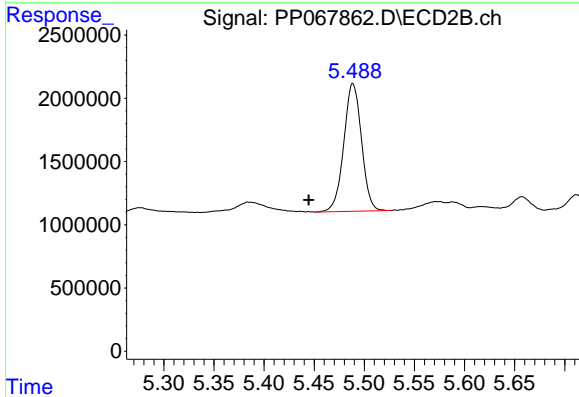
R.T.: 5.385 min  
 Delta R.T.: 0.023 min  
 Response: 2051358  
 Conc: 91.19 ng/ml



#19 AR-1242-4

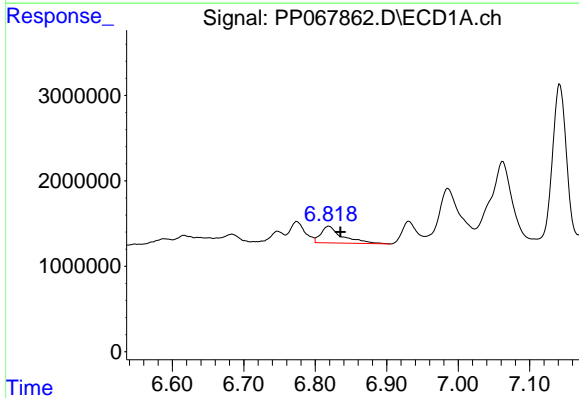
R.T.: 6.087 min  
 Delta R.T.: -0.013 min  
 Response: 935138  
 Conc: 43.60 ng/ml

Instrument :  
 ECD\_P  
 ClientSampleId :  
 Q119-19A



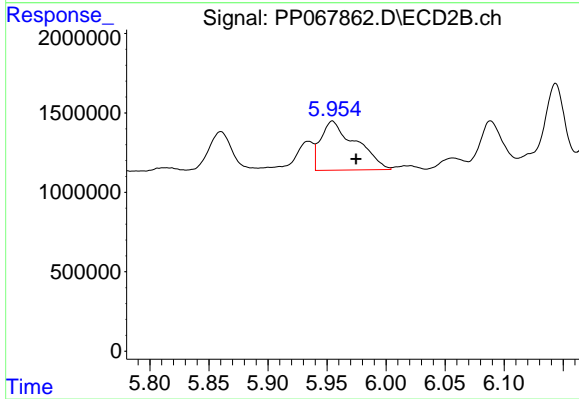
#19 AR-1242-4

R.T.: 5.489 min  
 Delta R.T.: 0.044 min  
 Response: 12424977  
 Conc: 523.43 ng/ml



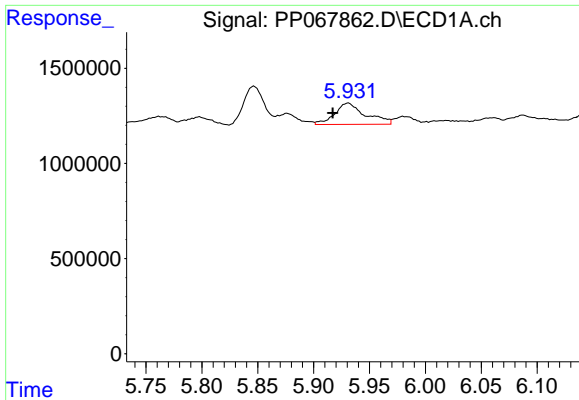
#20 AR-1242-5

R.T.: 6.819 min  
 Delta R.T.: -0.016 min  
 Response: 4101819  
 Conc: 170.02 ng/ml



#20 AR-1242-5

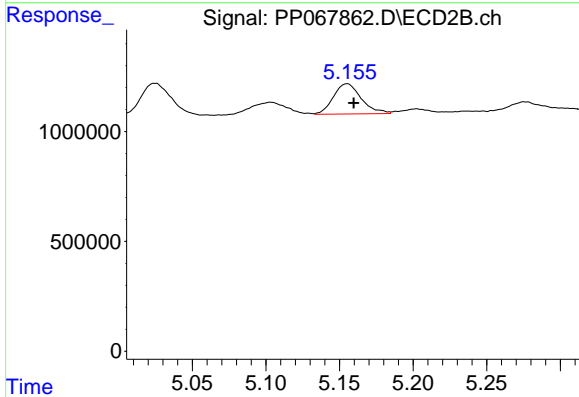
R.T.: 5.955 min  
 Delta R.T.: -0.020 min  
 Response: 6414502  
 Conc: 223.90 ng/ml



#21 AR-1248-1

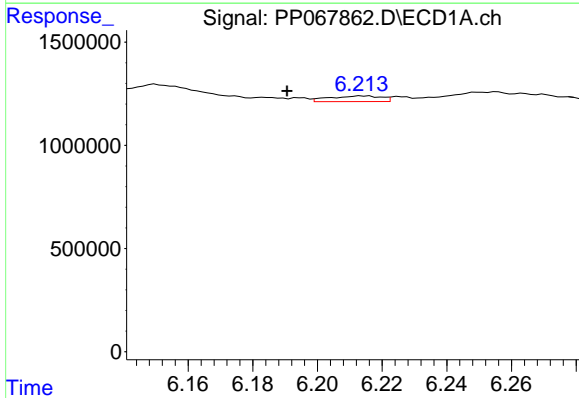
R.T.: 5.931 min  
 Delta R.T.: 0.014 min  
 Response: 2141965  
 Conc: 99.98 ng/ml

Instrument :  
 ECD\_P  
 ClientSampleId :  
 Q119-19A



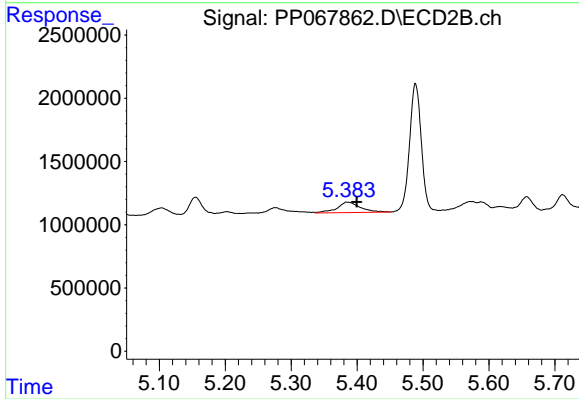
#21 AR-1248-1

R.T.: 5.155 min  
 Delta R.T.: -0.005 min  
 Response: 1808128  
 Conc: 79.78 ng/ml



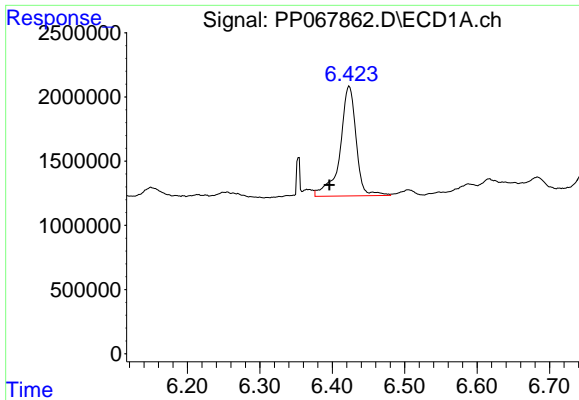
#22 AR-1248-2

R.T.: 6.214 min  
 Delta R.T.: 0.024 min  
 Response: 306840  
 Conc: 9.13 ng/ml



#22 AR-1248-2

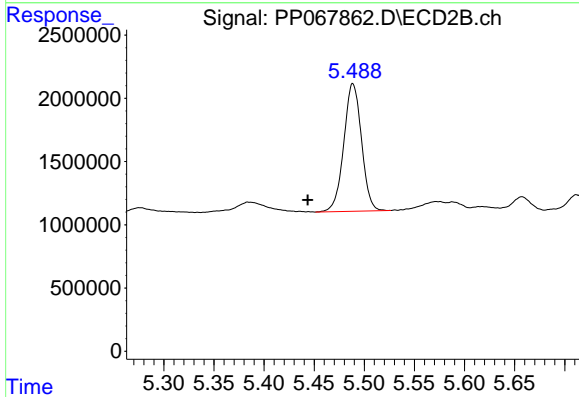
R.T.: 5.385 min  
 Delta R.T.: -0.015 min  
 Response: 2051358  
 Conc: 61.98 ng/ml



#23 AR-1248-3

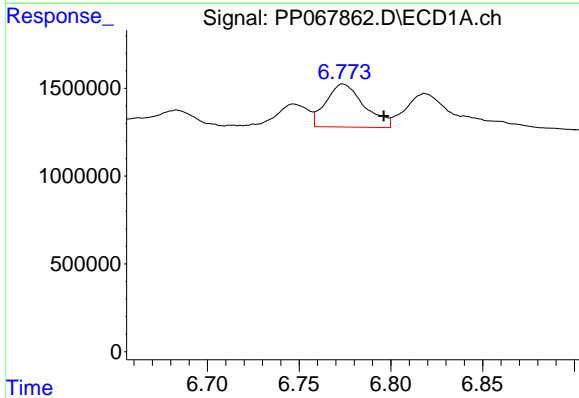
R.T.: 6.423 min  
 Delta R.T.: 0.027 min  
 Response: 13225261  
 Conc: 361.09 ng/ml

Instrument :  
 ECD\_P  
 ClientSampleId :  
 Q119-19A



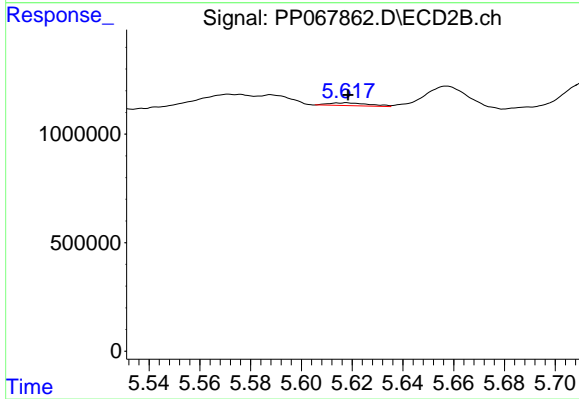
#23 AR-1248-3

R.T.: 5.489 min  
 Delta R.T.: 0.045 min  
 Response: 12424977  
 Conc: 360.41 ng/ml



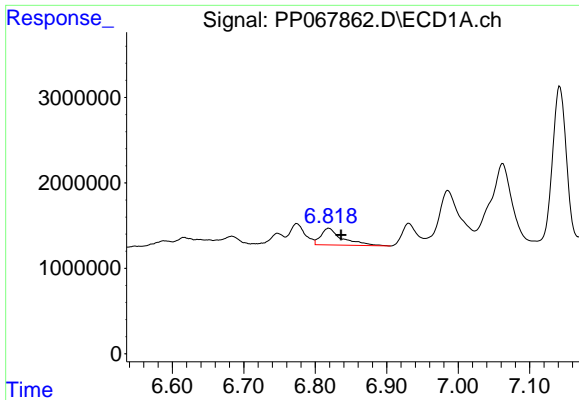
#24 AR-1248-4

R.T.: 6.774 min  
 Delta R.T.: -0.022 min  
 Response: 3566783  
 Conc: 88.18 ng/ml



#24 AR-1248-4

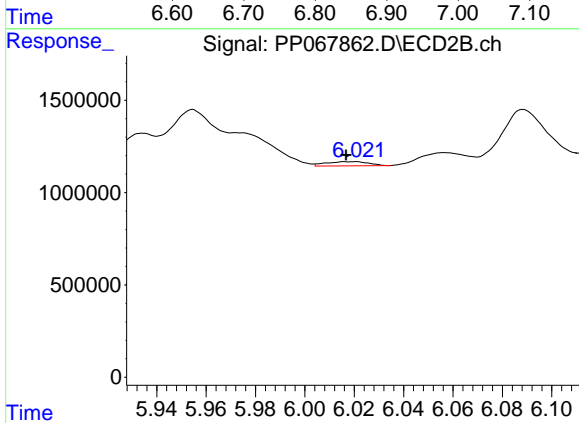
R.T.: 5.618 min  
 Delta R.T.: 0.000 min  
 Response: 143895  
 Conc: 3.51 ng/ml



#25 AR-1248-5

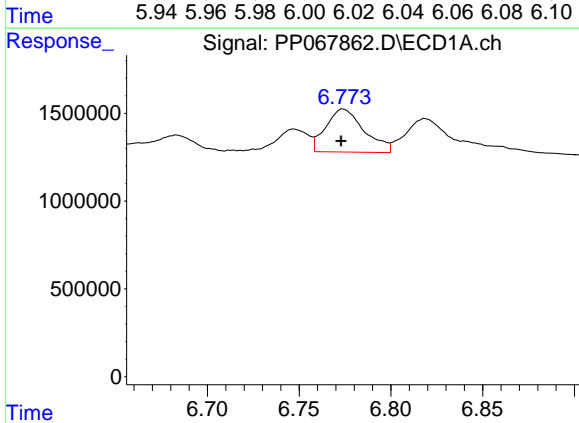
R.T.: 6.819 min  
 Delta R.T.: -0.017 min  
 Response: 4101819  
 Conc: 103.42 ng/ml

Instrument :  
 ECD\_P  
 ClientSampleId :  
 Q119-19A



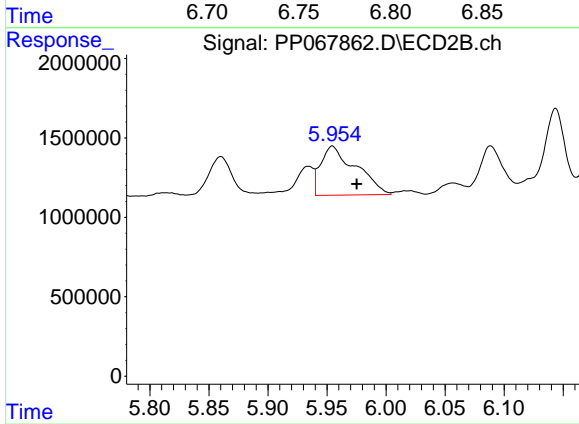
#25 AR-1248-5

R.T.: 6.020 min  
 Delta R.T.: 0.003 min  
 Response: 270672  
 Conc: 7.23 ng/ml



#26 AR-1254-1

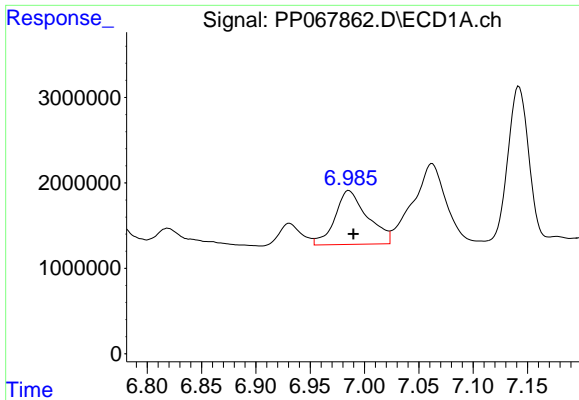
R.T.: 6.774 min  
 Delta R.T.: 0.001 min  
 Response: 3566783  
 Conc: 79.65 ng/ml



#26 AR-1254-1

R.T.: 5.955 min  
 Delta R.T.: -0.021 min  
 Response: 6414502  
 Conc: 108.57 ng/ml

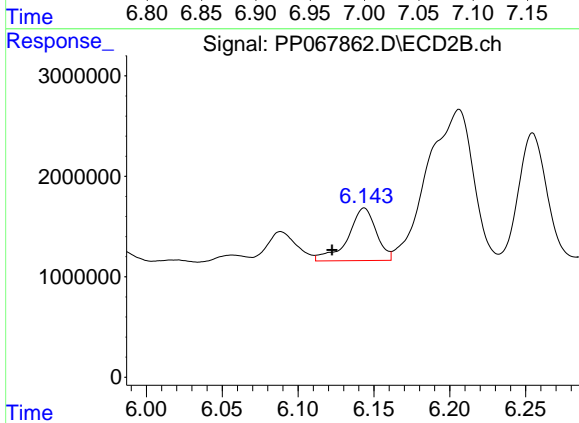




#27 AR-1254-2

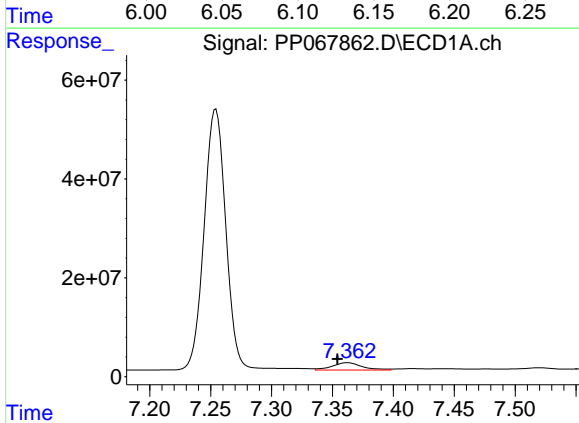
R.T.: 6.986 min  
 Delta R.T.: -0.004 min  
 Response: 13146404  
 Conc: 198.89 ng/ml

Instrument :  
 ECD\_P  
 ClientSampleId :  
 Q119-19A



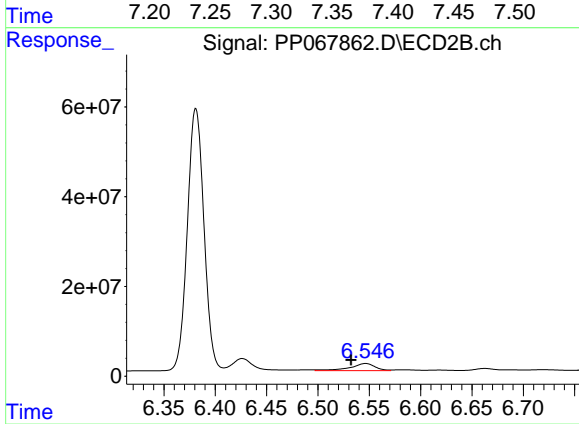
#27 AR-1254-2

R.T.: 6.144 min  
 Delta R.T.: 0.021 min  
 Response: 6803007  
 Conc: 129.67 ng/ml



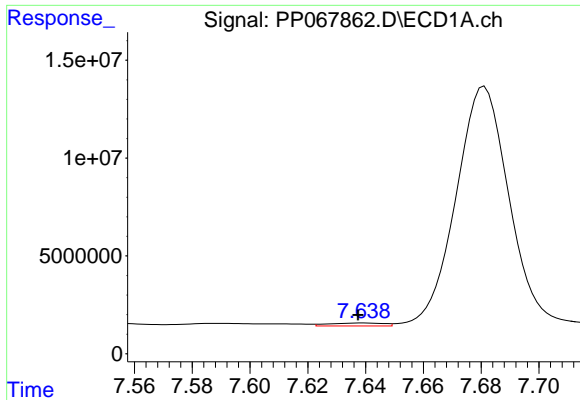
#28 AR-1254-3

R.T.: 7.362 min  
 Delta R.T.: 0.008 min  
 Response: 25141606  
 Conc: 362.00 ng/ml



#28 AR-1254-3

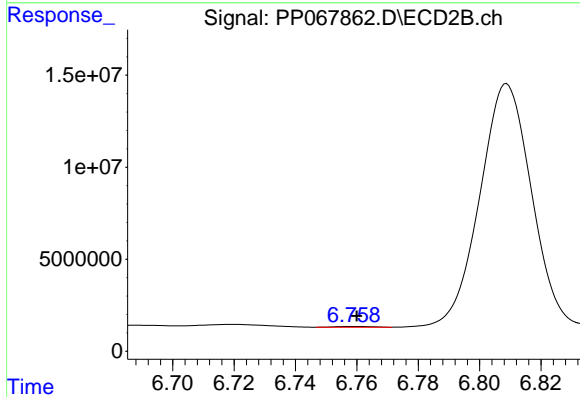
R.T.: 6.547 min  
 Delta R.T.: 0.014 min  
 Response: 26982618  
 Conc: 324.28 ng/ml



#29 AR-1254-4

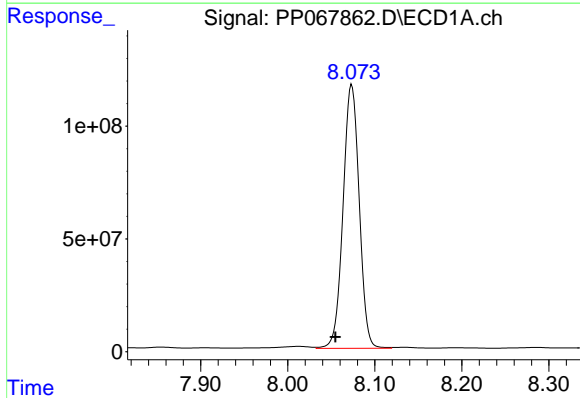
R.T.: 7.639 min  
 Delta R.T.: 0.002 min  
 Response: 1992021  
 Conc: 39.92 ng/ml

Instrument :  
 ECD\_P  
 ClientSampleId :  
 Q119-19A



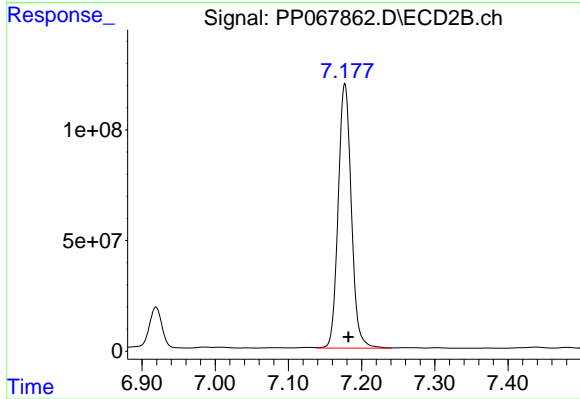
#29 AR-1254-4

R.T.: 6.759 min  
 Delta R.T.: 0.000 min  
 Response: 354535  
 Conc: 7.34 ng/ml



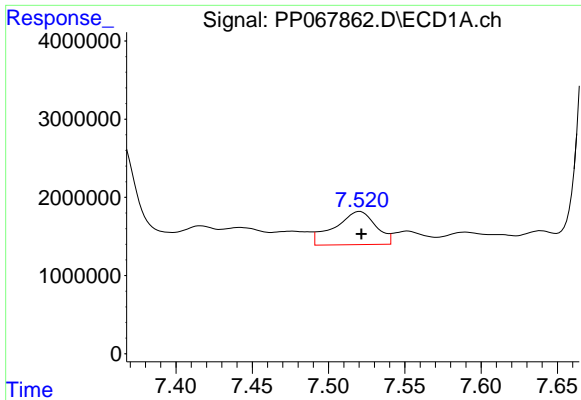
#30 AR-1254-5

R.T.: 8.074 min  
 Delta R.T.: 0.019 min  
 Response: 1508177028  
 Conc: 25436.13 ng/ml



#30 AR-1254-5

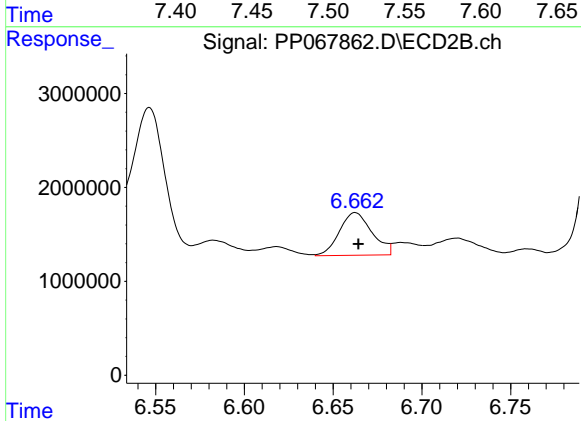
R.T.: 7.177 min  
 Delta R.T.: -0.005 min  
 Response: 1491929370  
 Conc: 20284.22 ng/ml



#31 AR-1260-1

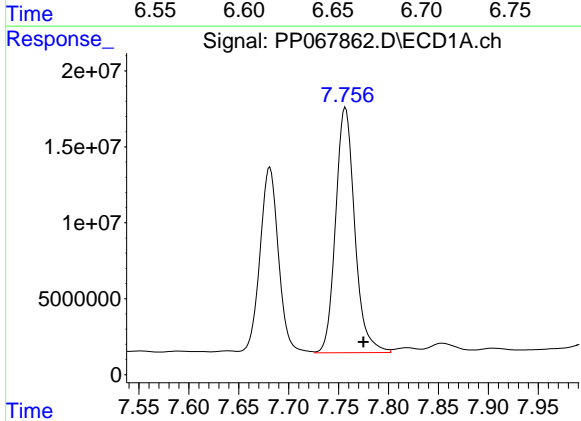
R.T.: 7.521 min  
 Delta R.T.: 0.000 min  
 Response: 7954426  
 Conc: 147.24 ng/ml

Instrument :  
 ECD\_P  
 ClientSampleId :  
 Q119-19A



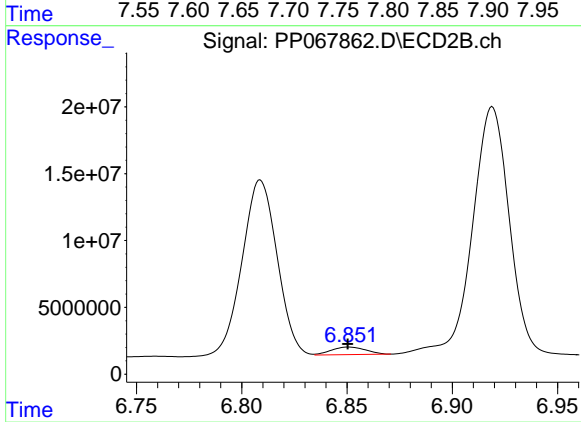
#31 AR-1260-1

R.T.: 6.663 min  
 Delta R.T.: -0.002 min  
 Response: 5811691  
 Conc: 102.03 ng/ml



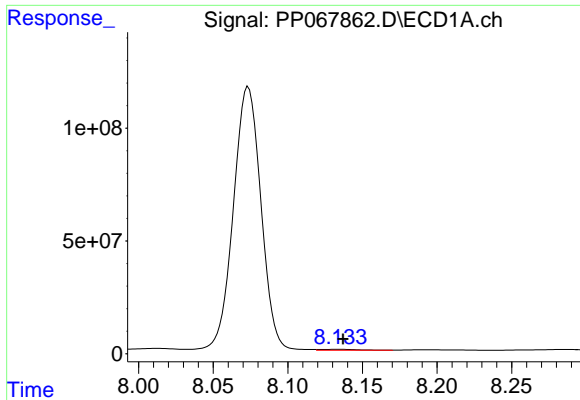
#32 AR-1260-2

R.T.: 7.757 min  
 Delta R.T.: -0.018 min  
 Response: 215253978  
 Conc: 3402.11 ng/ml



#32 AR-1260-2

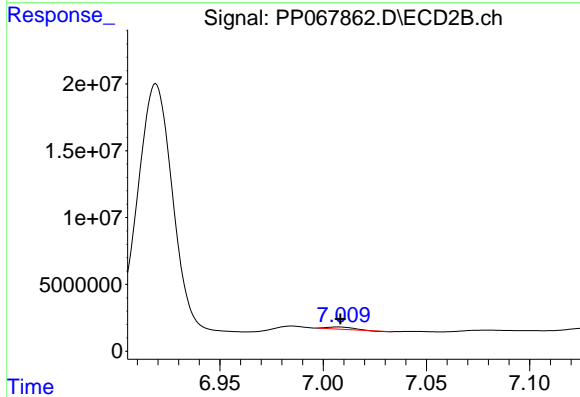
R.T.: 6.851 min  
 Delta R.T.: 0.000 min  
 Response: 6473004  
 Conc: 97.04 ng/ml



#33 AR-1260-3

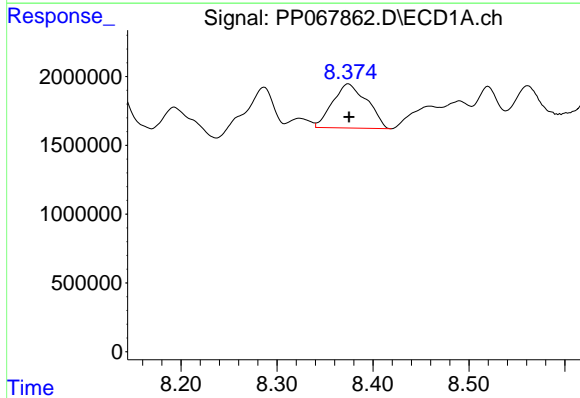
R.T.: 8.134 min  
 Delta R.T.: -0.003 min  
 Response: 8094989  
 Conc: 156.13 ng/ml

Instrument :  
 ECD\_P  
 ClientSampleId :  
 Q119-19A



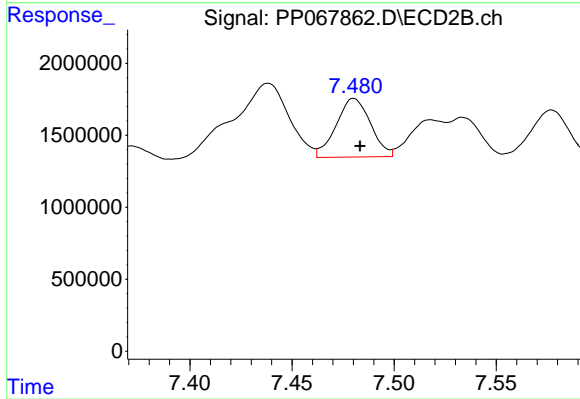
#33 AR-1260-3

R.T.: 7.007 min  
 Delta R.T.: -0.001 min  
 Response: 1334375  
 Conc: 20.95 ng/ml



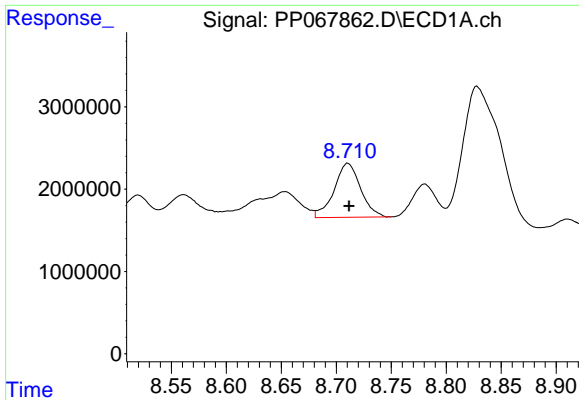
#34 AR-1260-4

R.T.: 8.374 min  
 Delta R.T.: 0.000 min  
 Response: 8014687  
 Conc: 133.15 ng/ml



#34 AR-1260-4

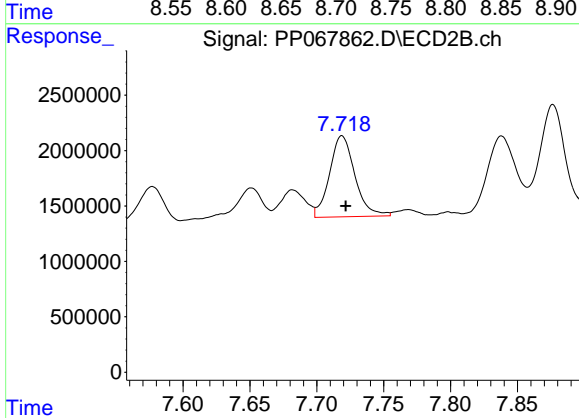
R.T.: 7.480 min  
 Delta R.T.: -0.003 min  
 Response: 4764465  
 Conc: 86.17 ng/ml



#35 AR-1260-5

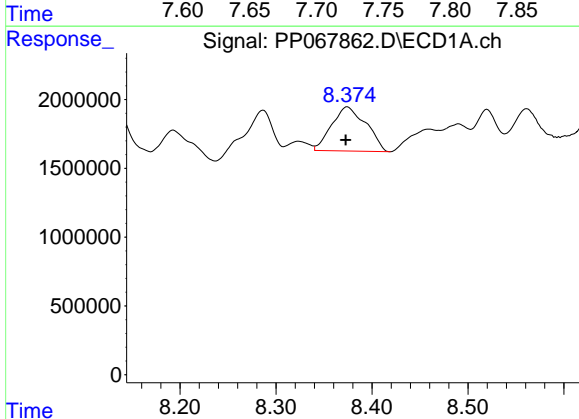
R.T.: 8.711 min  
 Delta R.T.: 0.000 min  
 Response: 11017622  
 Conc: 102.29 ng/ml

Instrument :  
 ECD\_P  
 ClientSampleId :  
 Q119-19A



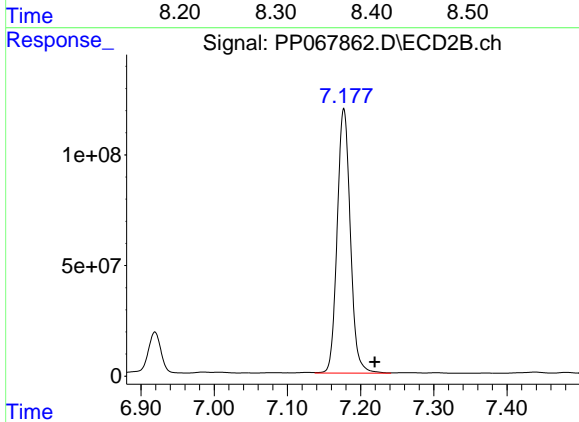
#35 AR-1260-5

R.T.: 7.719 min  
 Delta R.T.: -0.003 min  
 Response: 9644856  
 Conc: 78.86 ng/ml



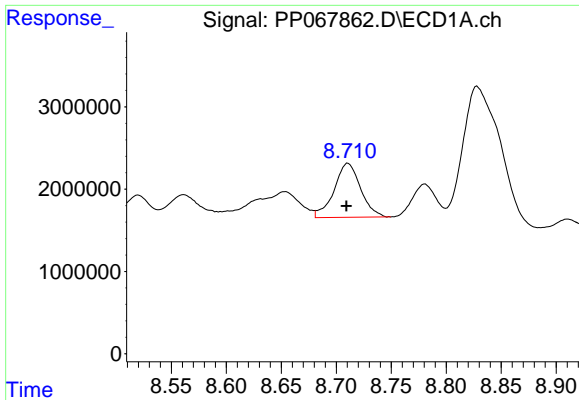
#36 AR-1262-1

R.T.: 8.374 min  
 Delta R.T.: 0.002 min  
 Response: 8014687  
 Conc: 111.67 ng/ml



#36 AR-1262-1

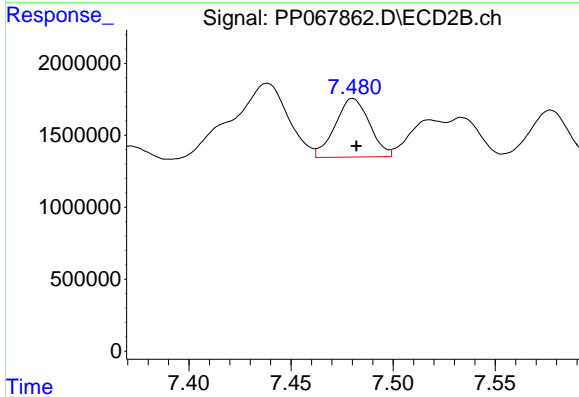
R.T.: 7.177 min  
 Delta R.T.: -0.042 min  
 Response: 1491929370  
 Conc: 18963.56 ng/ml



#37 AR-1262-2

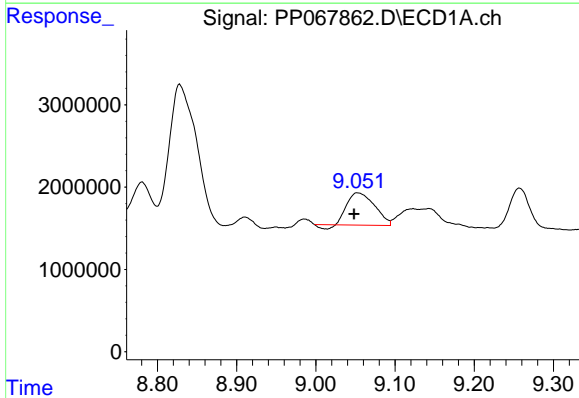
R.T.: 8.711 min  
 Delta R.T.: 0.002 min  
 Response: 11017622  
 Conc: 90.62 ng/ml

Instrument :  
 ECD\_P  
 ClientSampleId :  
 Q119-19A



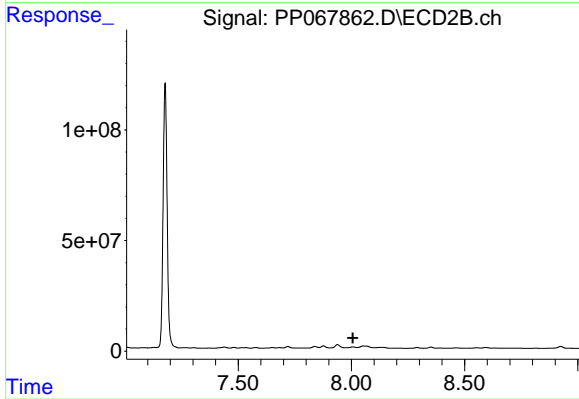
#37 AR-1262-2

R.T.: 7.480 min  
 Delta R.T.: -0.001 min  
 Response: 4764465  
 Conc: 67.14 ng/ml



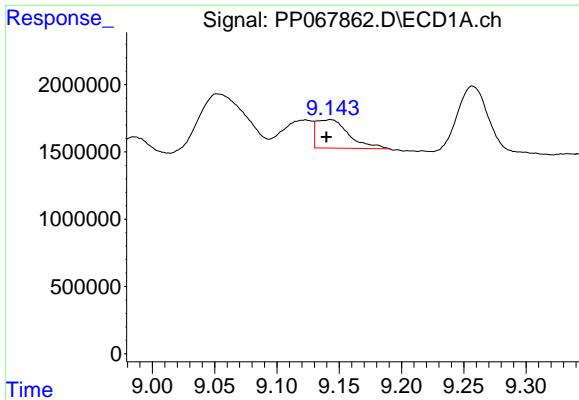
#38 AR-1262-3

R.T.: 9.053 min  
 Delta R.T.: 0.005 min  
 Response: 9296849  
 Conc: 105.03 ng/ml



#38 AR-1262-3

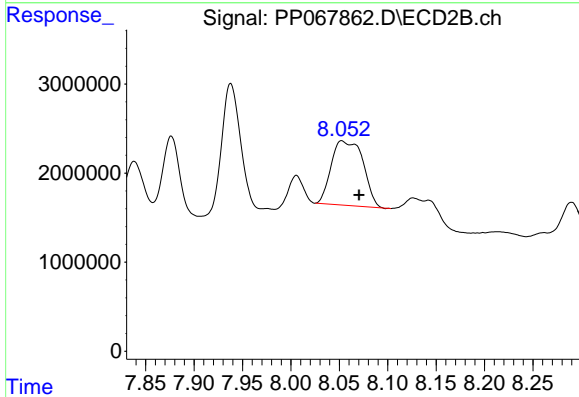
R.T.: 8.006 min  
 Delta R.T.: -0.001 min  
 Response: -1887834  
 Conc: N.D.



#39 AR-1262-4

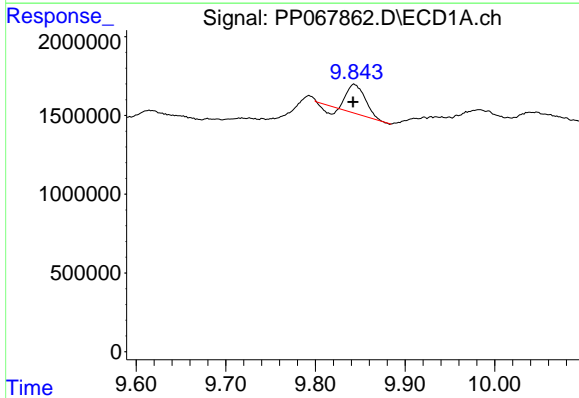
R.T.: 9.143 min  
 Delta R.T.: 0.003 min  
 Response: 3835435  
 Conc: 54.84 ng/ml

Instrument :  
 ECD\_P  
 ClientSampleId :  
 Q119-19A



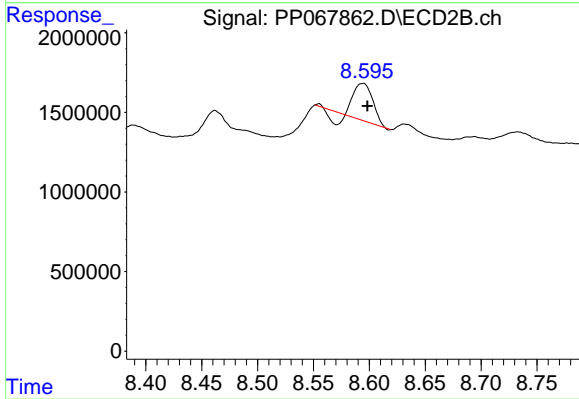
#39 AR-1262-4

R.T.: 8.053 min  
 Delta R.T.: -0.017 min  
 Response: 16551249  
 Conc: 164.79 ng/ml



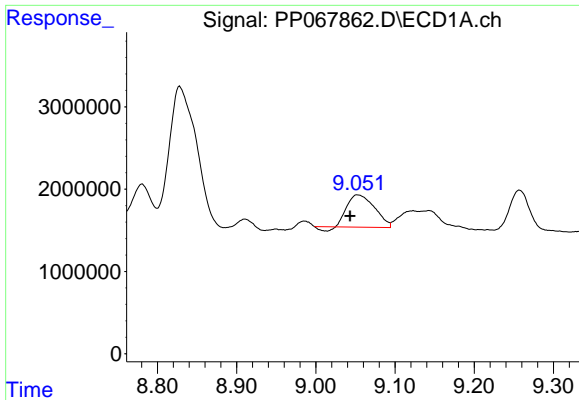
#40 AR-1262-5

R.T.: 9.844 min  
 Delta R.T.: 0.001 min  
 Response: 2455562  
 Conc: 52.48 ng/ml



#40 AR-1262-5

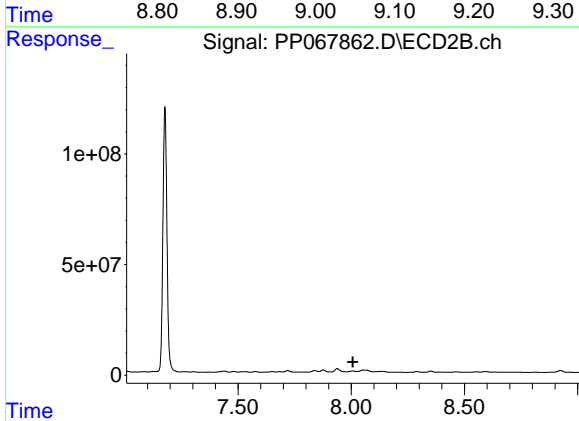
R.T.: 8.594 min  
 Delta R.T.: -0.004 min  
 Response: 2303951  
 Conc: 46.06 ng/ml



#41 AR-1268-1

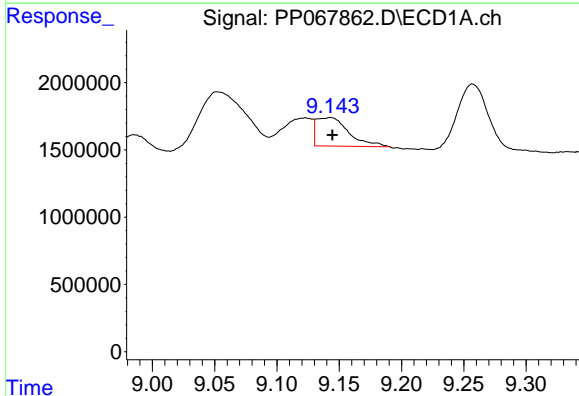
R.T.: 9.053 min  
 Delta R.T.: 0.010 min  
 Response: 9296849  
 Conc: 60.90 ng/ml

Instrument :  
 ECD\_P  
 ClientSampleId :  
 Q119-19A



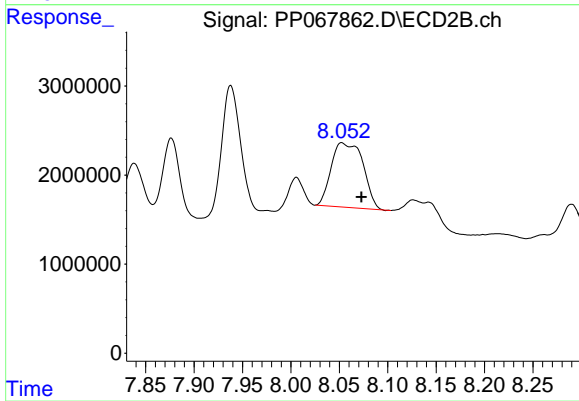
#41 AR-1268-1

R.T.: 8.006 min  
 Delta R.T.: -0.002 min  
 Response: -1887834  
 Conc: N.D.



#42 AR-1268-2

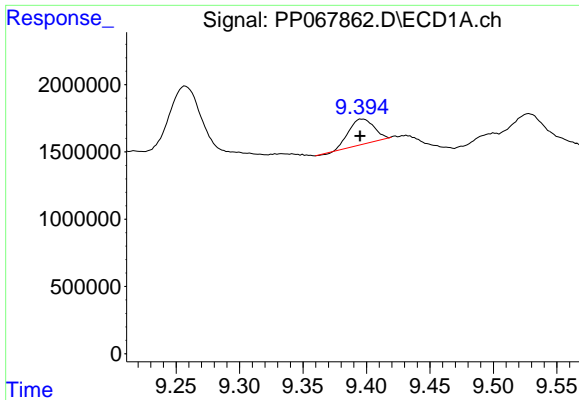
R.T.: 9.143 min  
 Delta R.T.: -0.002 min  
 Response: 3835435  
 Conc: 28.08 ng/ml



#42 AR-1268-2

R.T.: 8.053 min  
 Delta R.T.: -0.020 min  
 Response: 16551249  
 Conc: 115.59 ng/ml

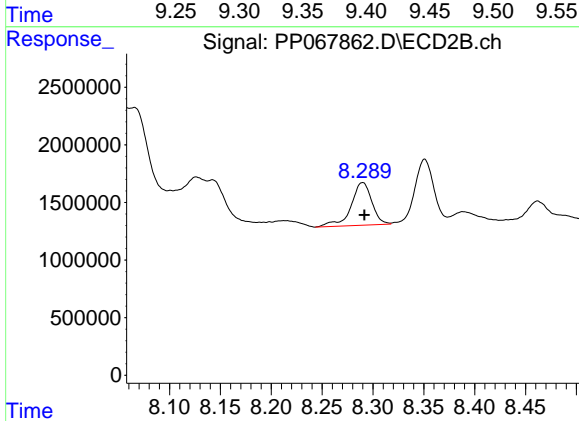




#43 AR-1268-3

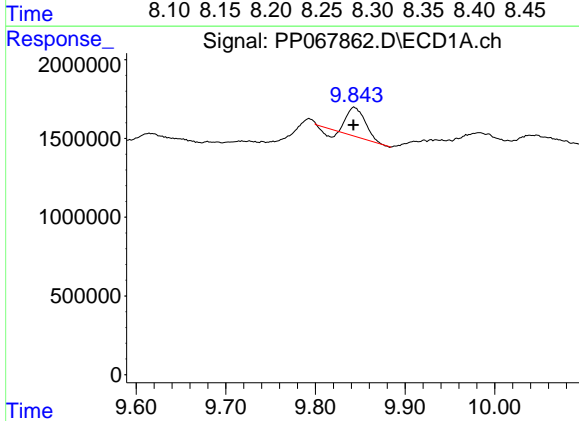
R.T.: 9.397 min  
 Delta R.T.: 0.002 min  
 Response: 2561970  
 Conc: 21.19 ng/ml

Instrument :  
 ECD\_P  
 ClientSampleId :  
 Q119-19A



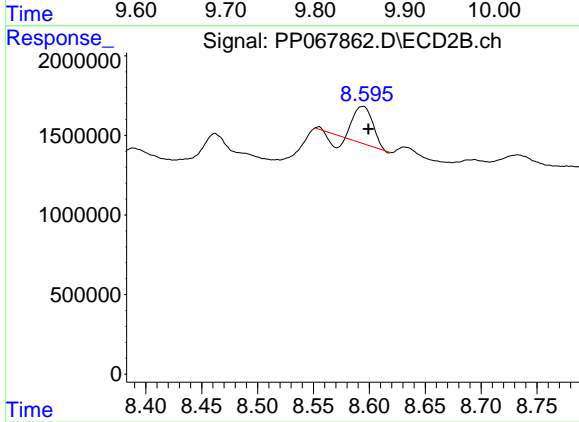
#43 AR-1268-3

R.T.: 8.290 min  
 Delta R.T.: -0.002 min  
 Response: 5279928  
 Conc: 41.41 ng/ml



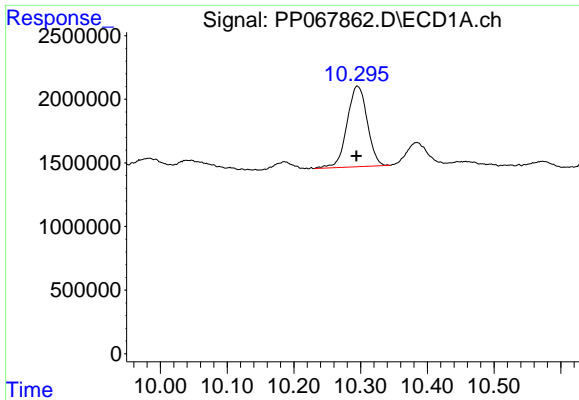
#44 AR-1268-4

R.T.: 9.844 min  
 Delta R.T.: 0.000 min  
 Response: 2455562  
 Conc: 48.32 ng/ml



#44 AR-1268-4

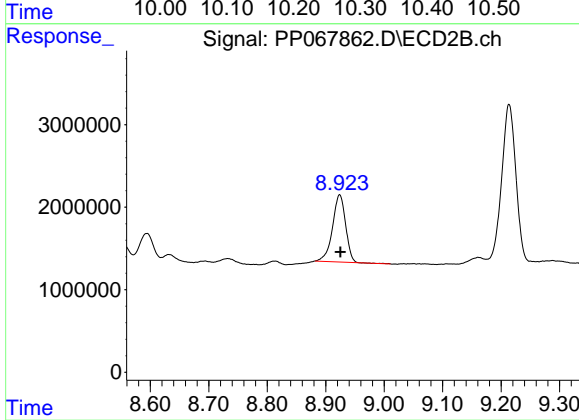
R.T.: 8.594 min  
 Delta R.T.: -0.005 min  
 Response: 2303951  
 Conc: 40.80 ng/ml



#45 AR-1268-5

R.T.: 10.296 min  
Delta R.T.: 0.002 min  
Response: 13326309  
Conc: 35.68 ng/ml

Instrument :  
ECD\_P  
ClientSampleId :  
Q119-19A



#45 AR-1268-5

R.T.: 8.924 min  
Delta R.T.: -0.002 min  
Response: 12663490  
Conc: 33.50 ng/ml