

Data Path : Z:\pestpcbsrv\HPCHEM1\ECD\_P\Data\PP101524\  
 Data File : PP067865.D  
 Signal(s) : Signal #1: ECD1A.ch Signal #2: ECD2B.ch  
 Acq On : 15 Oct 2024 20:42  
 Operator : YP\AJ  
 Sample : AR1660CCC500  
 Misc :  
 ALS Vial : 3 Sample Multiplier: 1

Instrument :  
 ECD\_P  
 ClientSampleId :  
 AR1660CCC500

Integration File signal 1: autoint1.e  
 Integration File signal 2: autoint2.e  
 Quant Time: Oct 16 02:55:38 2024  
 Quant Method : Z:\pestpcbsrv\HPCHEM1\ECD\_P\methods\PP100824.M  
 Quant Title : GC EXTRACTABLES  
 QLast Update : Wed Oct 09 05:48:32 2024  
 Response via : Initial Calibration  
 Integrator: ChemStation

Volume Inj. : 2 µl  
 Signal #1 Phase : ZB-MR1 Signal #2 Phase: ZB-MR2  
 Signal #1 Info : 30Mx0.32mmx 0.50µ Signal #2 Info : 30M x 0.32mm x 0.25µm

Compound	RT#1	RT#2	Resp#1	Resp#2	ng/ml	ng/ml
System Monitoring Compounds						
1) SA Tetrachlo...	4.753	4.051	48270241	51426109	52.148	50.897
2) SA Decachlor...	10.666	9.213	57443137	52171063	49.894	46.521
Target Compounds						
3) L1 AR-1016-1	5.917	5.159	17585249	18253490	531.812	521.718
4) L1 AR-1016-2	5.944	5.179	28121732	24388795	576.609	506.322
5) L1 AR-1016-3	6.003	5.359	16416072	14740695	520.948	547.218
6) L1 AR-1016-4	6.101	5.398	13409495	12786410	520.886	530.885
7) L1 AR-1016-5	6.396	5.618	14185694	16865140	524.097	554.594
8) L2 AR-1221-1	4.949	4.264	1981809	1935115	154.710	146.931
9) L2 AR-1221-2	5.042	4.354	2773920	2906063	293.208	291.737
10) L2 AR-1221-3	5.118	4.432	10121503	10475903	350.130	336.509
11) L3 AR-1232-1	5.118	4.432	10121503	10475903	442.764	430.523
12) L3 AR-1232-2	5.651	5.179	13170742	24388795	1117.772	1090.490
13) L3 AR-1232-3	5.944	5.359	28121732	14740695	1262.479	1234.171
14) L3 AR-1232-4	6.101	5.443	13409495	15257856	1188.003	1323.162
15) L3 AR-1232-5	6.190	5.618	12148311	16865140	1332.025	1253.886
16) L4 AR-1242-1	5.917	5.159	17585249	18253490	629.458	627.776
17) L4 AR-1242-2	5.944	5.179	28121732	24388795	692.062	607.476
18) L4 AR-1242-3	6.003	5.359	16416072	14740695	608.798	655.287
19) L4 AR-1242-4	6.101	5.443	13409495	15257856	625.137	642.769
20) L4 AR-1242-5	6.836	5.973	4864528	15921776	201.631	555.742 #
21) L5 AR-1248-1	5.917	5.159	17585249	18253490	820.863	805.404
22) L5 AR-1248-2	6.190	5.398	12148311	12786410	361.378	386.345
23) L5 AR-1248-3	6.396	5.443	14185694	15257856	387.318	442.582
24) L5 AR-1248-4	6.795	5.618	4376705	16865140	108.198	411.788 #
25) L5 AR-1248-5	6.836	6.015	4864528	4373980	122.653	116.817
26) L6 AR-1254-1	6.771	5.973	14369488	15921776	320.873	269.477
27) L6 AR-1254-2	6.989	6.120	11874722	12138848	179.654	231.374 #
28) L6 AR-1254-3	7.355	6.545	6719517	25710932	96.750	308.996 #
29) L6 AR-1254-4	7.638	6.758	5001143	2817201	100.214	58.358 #
30) L6 AR-1254-5	8.054	7.179	35892367	33982204	605.342	462.021
31) L7 AR-1260-1	7.520	6.661	26461446	27336923	489.812	479.915
32) L7 AR-1260-2	7.772	6.847	30719183	31839728	485.519	477.326
33) L7 AR-1260-3	8.134	7.006	25150705	30269988	485.077	475.188
34) L7 AR-1260-4	8.372	7.480	29143362	25854997	484.154	467.602
35) L7 AR-1260-5	8.710	7.718	52397452	57284433	486.458	468.398
36) L8 AR-1262-1	8.372	7.217	29143362	27406574	406.059	348.359
37) L8 AR-1262-2	8.710	7.480	52397452	25854997	430.970	364.350
38) L8 AR-1262-3	9.056	8.005	36244088	14302148	409.472	250.479 #
39) L8 AR-1262-4	9.140	8.069	24493283	42729433	350.180	425.438
40) L8 AR-1262-5	9.843	8.597	17688578	17140368	378.032	342.686
41) L9 AR-1268-1	9.056	8.005	36244088	14302148	237.435	89.870 #

Data Path : Z:\pestpcbsrv\HPCHEM1\ECD\_P\Data\PP101524\  
 Data File : PP067865.D  
 Signal(s) : Signal #1: ECD1A.ch Signal #2: ECD2B.ch  
 Acq On : 15 Oct 2024 20:42  
 Operator : YP\AJ  
 Sample : AR1660CCC500  
 Misc :  
 ALS Vial : 3 Sample Multiplier: 1

Instrument :  
 ECD\_P  
 ClientSampleId :  
 AR1660CCC500

Integration File signal 1: autoint1.e  
 Integration File signal 2: autoint2.e  
 Quant Time: Oct 16 02:55:38 2024  
 Quant Method : Z:\pestpcbsrv\HPCHEM1\ECD\_P\methods\PP100824.M  
 Quant Title : GC EXTRACTABLES  
 QLast Update : Wed Oct 09 05:48:32 2024  
 Response via : Initial Calibration  
 Integrator: ChemStation

Volume Inj. : 2 µl  
 Signal #1 Phase : ZB-MR1 Signal #2 Phase: ZB-MR2  
 Signal #1 Info : 30Mx0.32mmx 0.50µ Signal #2 Info : 30M x 0.32mm x 0.25µm

	Compound	RT#1	RT#2	Resp#1	Resp#2	ng/ml	ng/ml
42)	L9 AR-1268-2	9.140	8.069	24493283	42729433	179.313	298.419 #
43)	L9 AR-1268-3	9.395	8.289	677097	871829	5.600	6.837
44)	L9 AR-1268-4	9.843	8.597	17688578	17140368	348.064	303.498
45)	L9 AR-1268-5	10.295	8.923	5637401	4844576	15.095	12.815

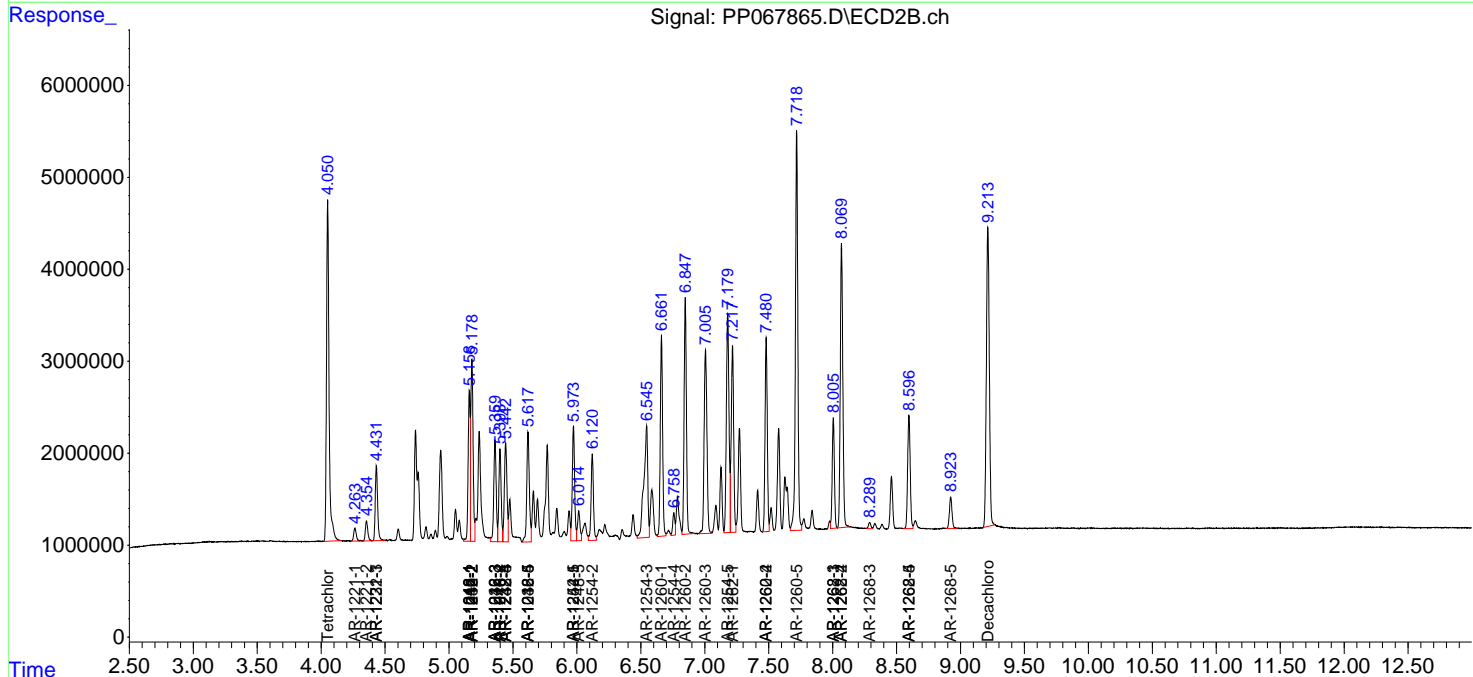
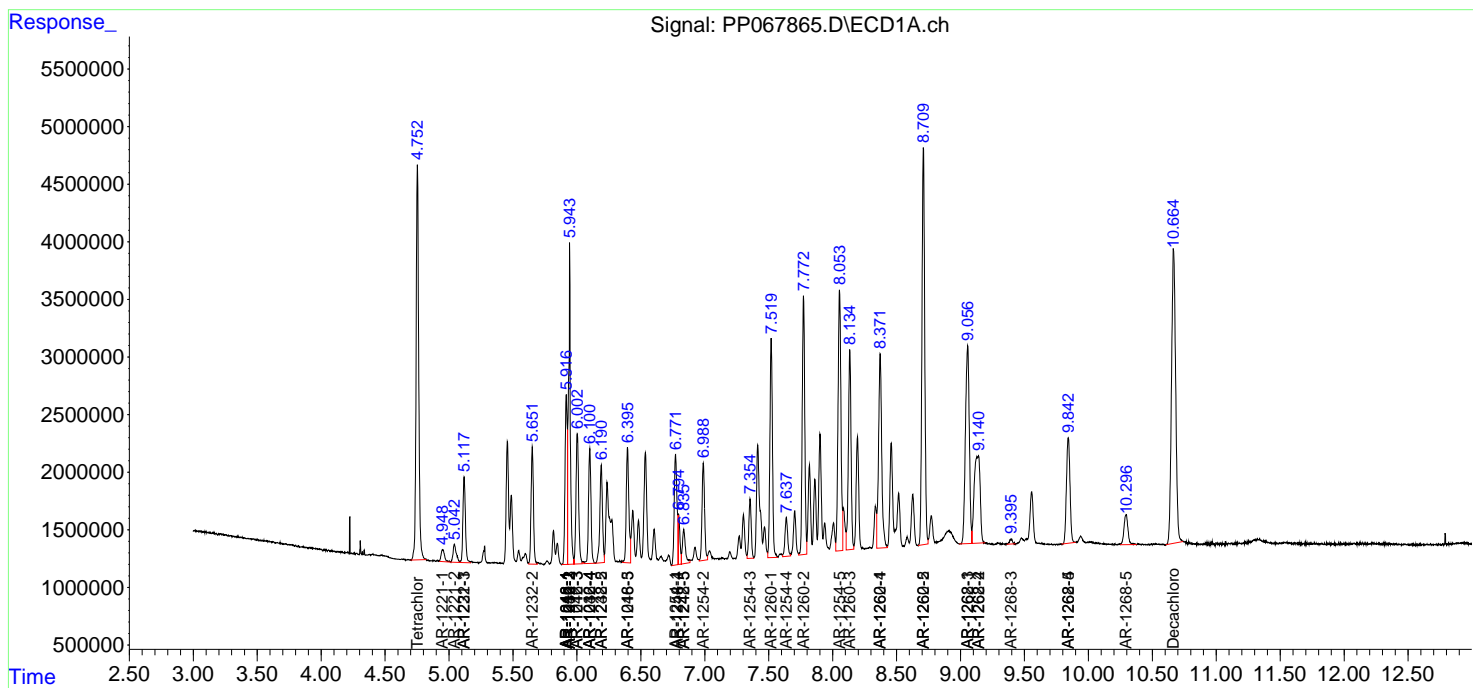
(f)=RT Delta > 1/2 Window (#)=Amounts differ by > 25% (m)=manual int.

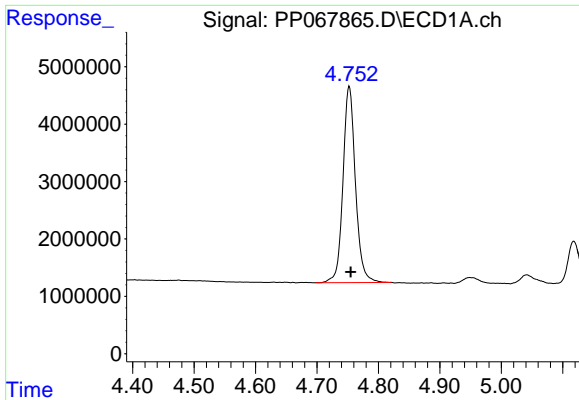
Data Path : Z:\pestpcbsrv\HPCHEM1\ECD\_P\Data\PP101524\  
 Data File : PP067865.D  
 Signal(s) : Signal #1: ECD1A.ch Signal #2: ECD2B.ch  
 Acq On : 15 Oct 2024 20:42  
 Operator : YP\AJ  
 Sample : AR1660CCC500  
 Misc :  
 ALS Vial : 3 Sample Multiplier: 1

Instrument :  
 ECD\_P  
 ClientSampleId :  
 AR1660CCC500

Integration File signal 1: autoint1.e  
 Integration File signal 2: autoint2.e  
 Quant Time: Oct 16 02:55:38 2024  
 Quant Method : Z:\pestpcbsrv\HPCHEM1\ECD\_P\methods\PP100824.M  
 Quant Title : GC EXTRACTABLES  
 QLast Update : Wed Oct 09 05:48:32 2024  
 Response via : Initial Calibration  
 Integrator: ChemStation

Volume Inj. : 2 µl  
 Signal #1 Phase : ZB-MR1 Signal #2 Phase: ZB-MR2  
 Signal #1 Info : 30Mx0.32mmx 0.50µ Signal #2 Info : 30M x 0.32mm x 0.25µm

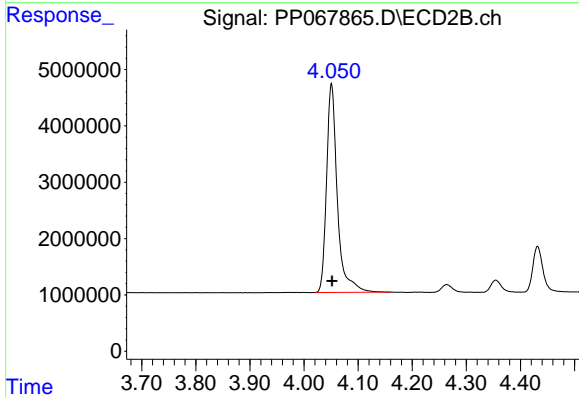




#1 Tetrachloro-m-xylene

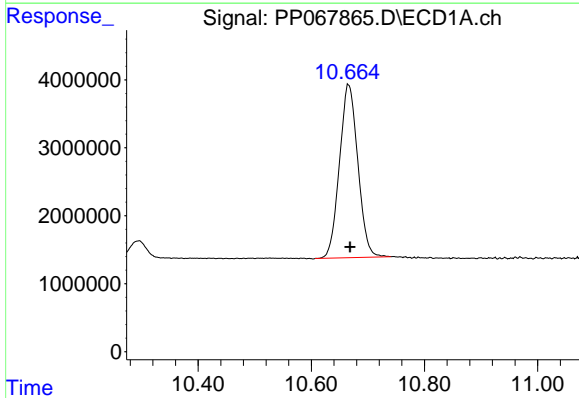
R.T.: 4.753 min  
 Delta R.T.: -0.002 min  
 Response: 48270241  
 Conc: 52.15 ng/ml

Instrument :  
 ECD\_P  
 ClientSampleId :  
 AR1660CCC500



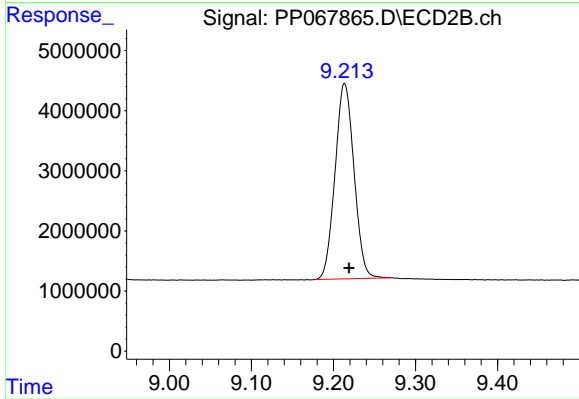
#1 Tetrachloro-m-xylene

R.T.: 4.051 min  
 Delta R.T.: -0.001 min  
 Response: 51426109  
 Conc: 50.90 ng/ml



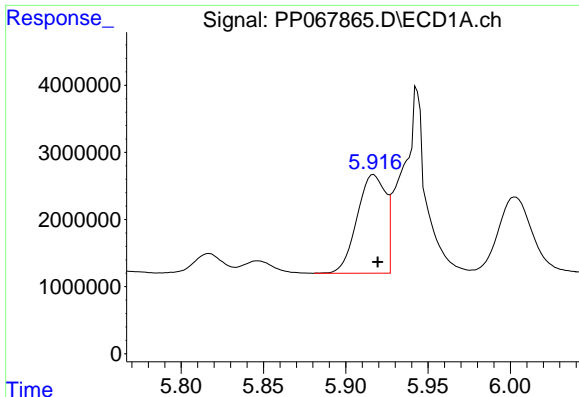
#2 Decachlorobiphenyl

R.T.: 10.666 min  
 Delta R.T.: -0.003 min  
 Response: 57443137  
 Conc: 49.89 ng/ml



#2 Decachlorobiphenyl

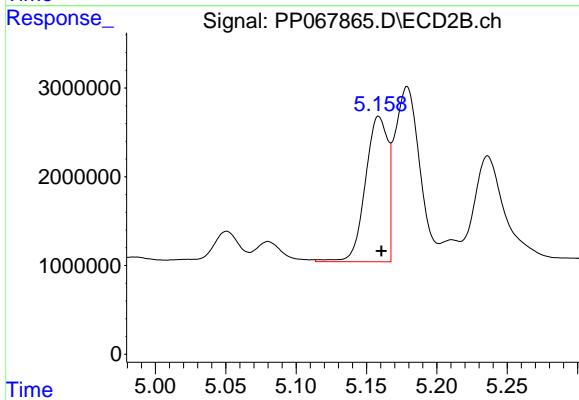
R.T.: 9.213 min  
 Delta R.T.: -0.006 min  
 Response: 52171063  
 Conc: 46.52 ng/ml



#3 AR-1016-1

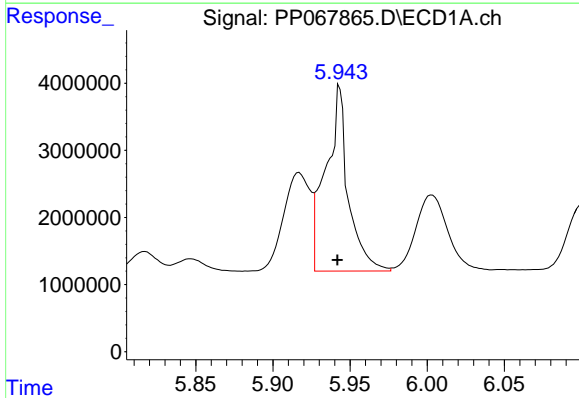
R.T.: 5.917 min  
 Delta R.T.: -0.002 min  
 Response: 17585249  
 Conc: 531.81 ng/ml

Instrument :  
 ECD\_P  
 ClientSampleId :  
 AR1660CCC500



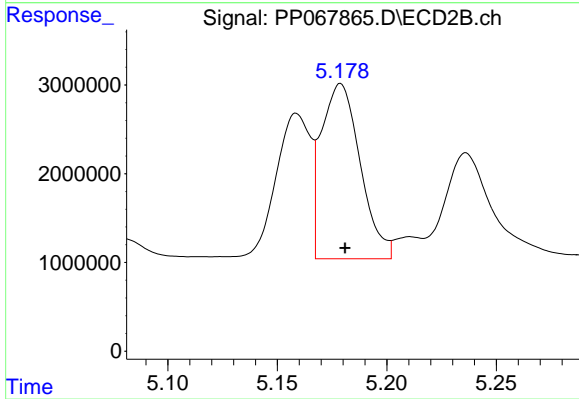
#3 AR-1016-1

R.T.: 5.159 min  
 Delta R.T.: -0.002 min  
 Response: 18253490  
 Conc: 521.72 ng/ml



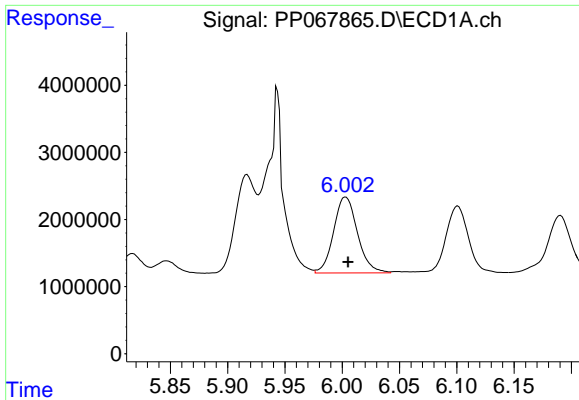
#4 AR-1016-2

R.T.: 5.944 min  
 Delta R.T.: 0.002 min  
 Response: 28121732  
 Conc: 576.61 ng/ml



#4 AR-1016-2

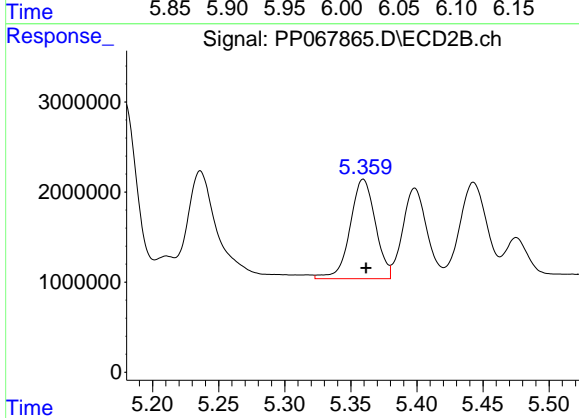
R.T.: 5.179 min  
 Delta R.T.: -0.002 min  
 Response: 24388795  
 Conc: 506.32 ng/ml



#5 AR-1016-3

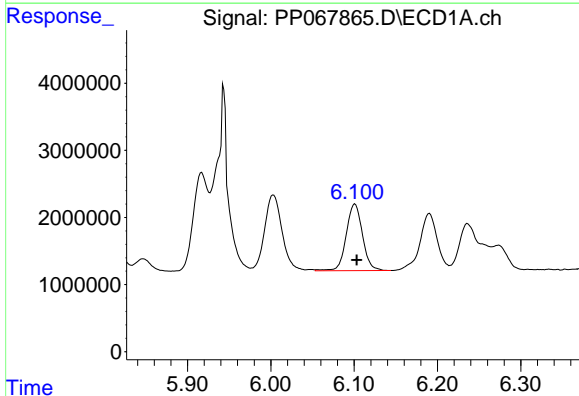
R.T.: 6.003 min  
 Delta R.T.: -0.002 min  
 Response: 16416072  
 Conc: 520.95 ng/ml

Instrument :  
 ECD\_P  
 ClientSampleId :  
 AR1660CCC500



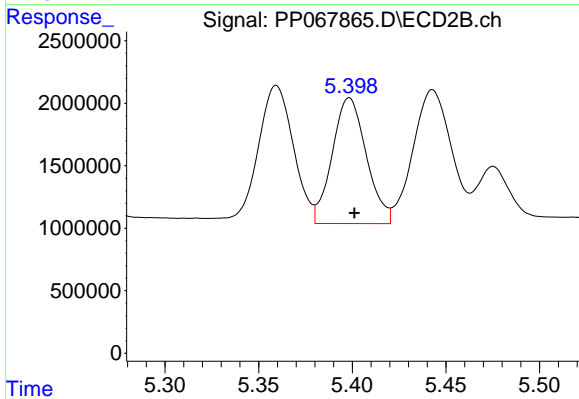
#5 AR-1016-3

R.T.: 5.359 min  
 Delta R.T.: -0.002 min  
 Response: 14740695  
 Conc: 547.22 ng/ml



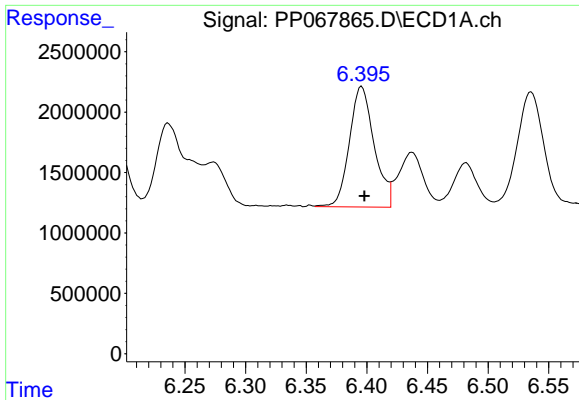
#6 AR-1016-4

R.T.: 6.101 min  
 Delta R.T.: -0.002 min  
 Response: 13409495  
 Conc: 520.89 ng/ml



#6 AR-1016-4

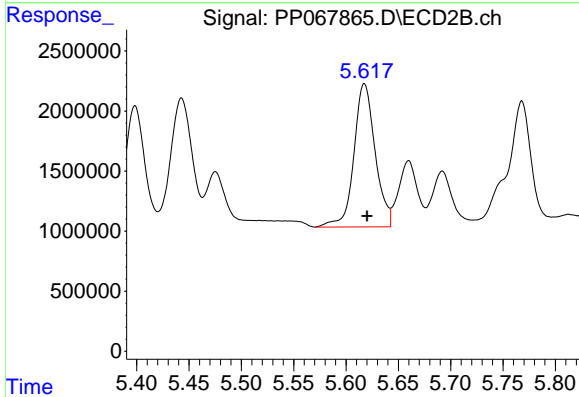
R.T.: 5.398 min  
 Delta R.T.: -0.003 min  
 Response: 12786410  
 Conc: 530.88 ng/ml



#7 AR-1016-5

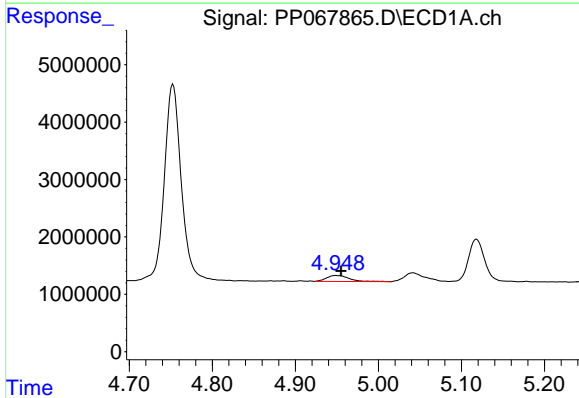
R.T.: 6.396 min  
 Delta R.T.: -0.002 min  
 Response: 14185694  
 Conc: 524.10 ng/ml

Instrument :  
 ECD\_P  
 ClientSampleId :  
 AR1660CCC500



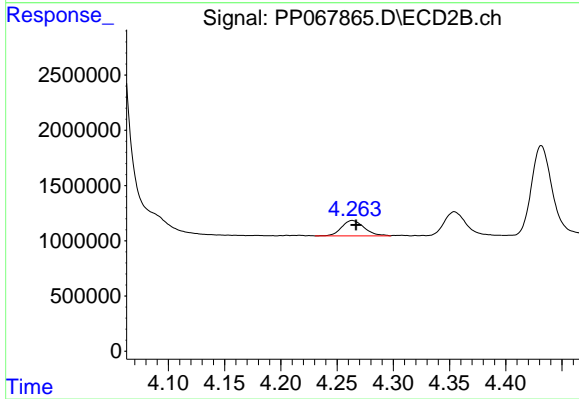
#7 AR-1016-5

R.T.: 5.618 min  
 Delta R.T.: -0.003 min  
 Response: 16865140  
 Conc: 554.59 ng/ml



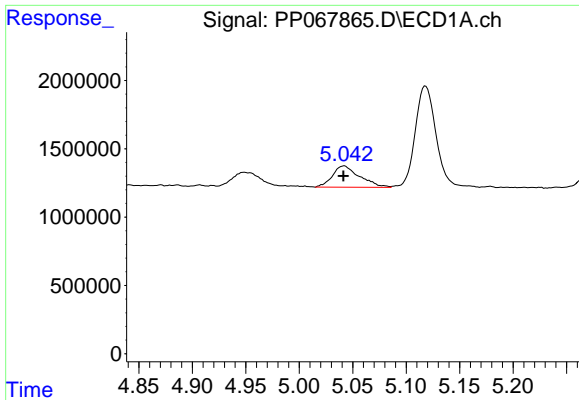
#8 AR-1221-1

R.T.: 4.949 min  
 Delta R.T.: -0.007 min  
 Response: 1981809  
 Conc: 154.71 ng/ml



#8 AR-1221-1

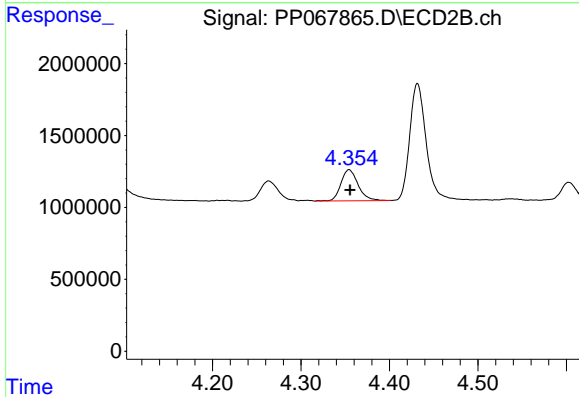
R.T.: 4.264 min  
 Delta R.T.: -0.003 min  
 Response: 1935115  
 Conc: 146.93 ng/ml



#9 AR-1221-2

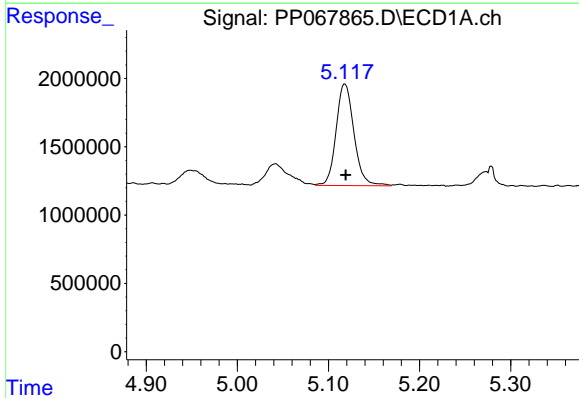
R.T.: 5.042 min  
 Delta R.T.: 0.000 min  
 Response: 2773920  
 Conc: 293.21 ng/ml

Instrument :  
 ECD\_P  
 ClientSampleId :  
 AR1660CCC500



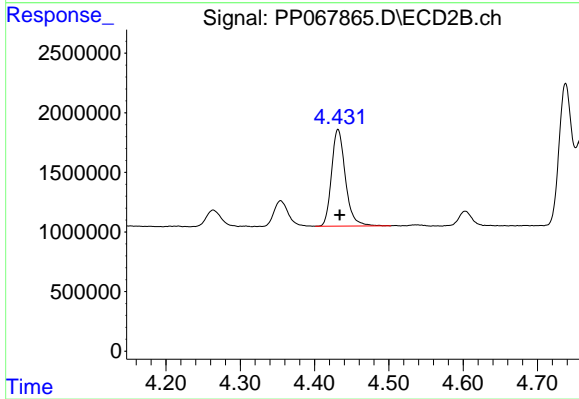
#9 AR-1221-2

R.T.: 4.354 min  
 Delta R.T.: -0.001 min  
 Response: 2906063  
 Conc: 291.74 ng/ml



#10 AR-1221-3

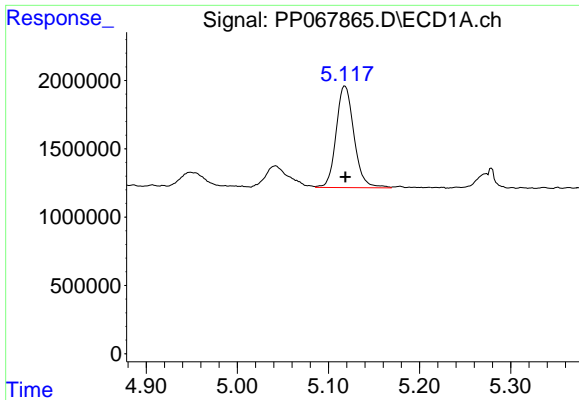
R.T.: 5.118 min  
 Delta R.T.: 0.000 min  
 Response: 10121503  
 Conc: 350.13 ng/ml



#10 AR-1221-3

R.T.: 4.432 min  
 Delta R.T.: -0.002 min  
 Response: 10475903  
 Conc: 336.51 ng/ml

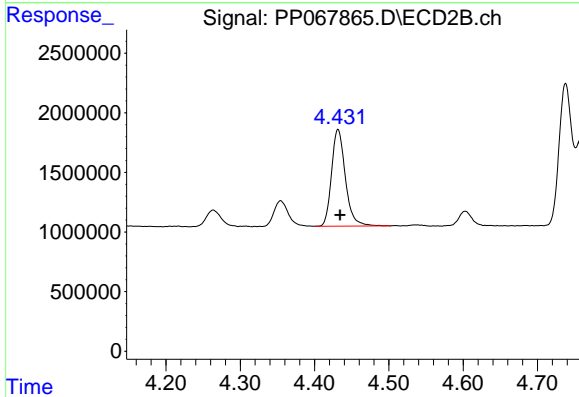




#11 AR-1232-1

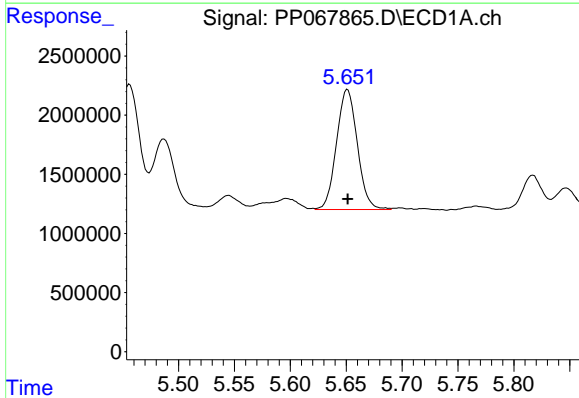
R.T.: 5.118 min  
 Delta R.T.: 0.000 min  
 Response: 10121503  
 Conc: 442.76 ng/ml

Instrument :  
 ECD\_P  
 ClientSampleId :  
 AR1660CCC500



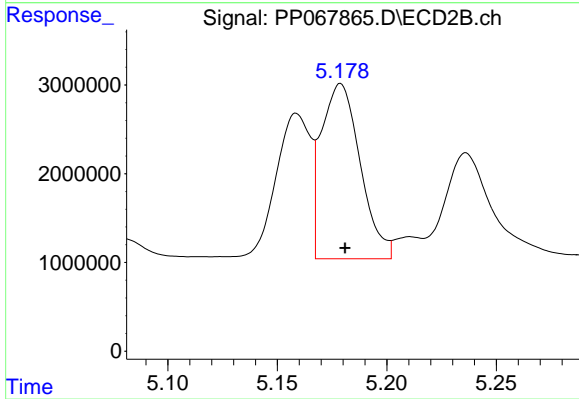
#11 AR-1232-1

R.T.: 4.432 min  
 Delta R.T.: -0.003 min  
 Response: 10475903  
 Conc: 430.52 ng/ml



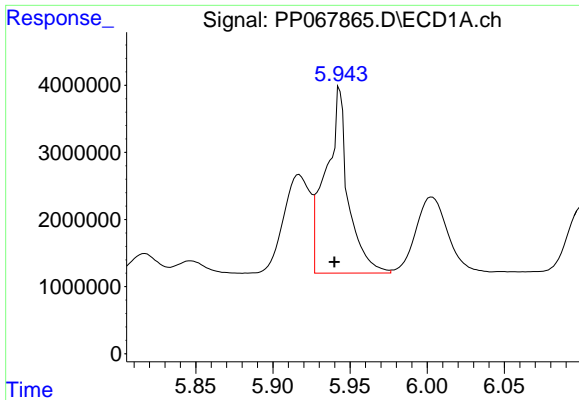
#12 AR-1232-2

R.T.: 5.651 min  
 Delta R.T.: 0.000 min  
 Response: 13170742  
 Conc: 1117.77 ng/ml



#12 AR-1232-2

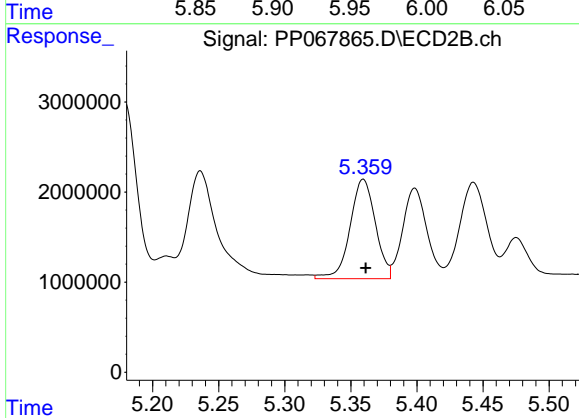
R.T.: 5.179 min  
 Delta R.T.: -0.002 min  
 Response: 24388795  
 Conc: 1090.49 ng/ml



#13 AR-1232-3

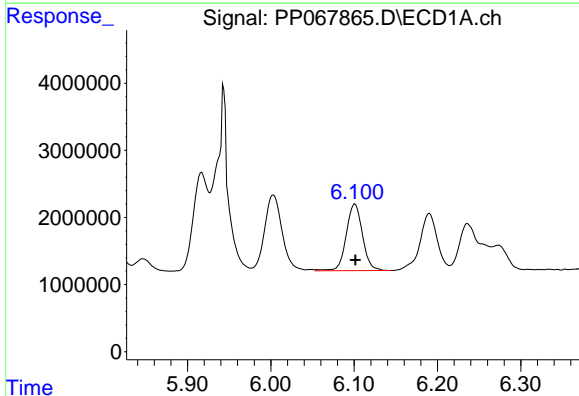
R.T.: 5.944 min  
 Delta R.T.: 0.004 min  
 Response: 28121732  
 Conc: 1262.48 ng/ml

Instrument :  
 ECD\_P  
 ClientSampleId :  
 AR1660CCC500



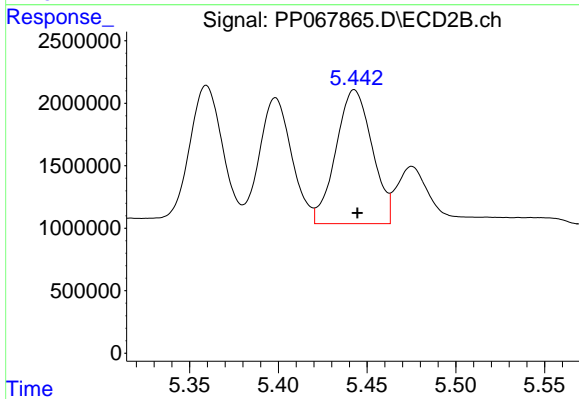
#13 AR-1232-3

R.T.: 5.359 min  
 Delta R.T.: -0.002 min  
 Response: 14740695  
 Conc: 1234.17 ng/ml



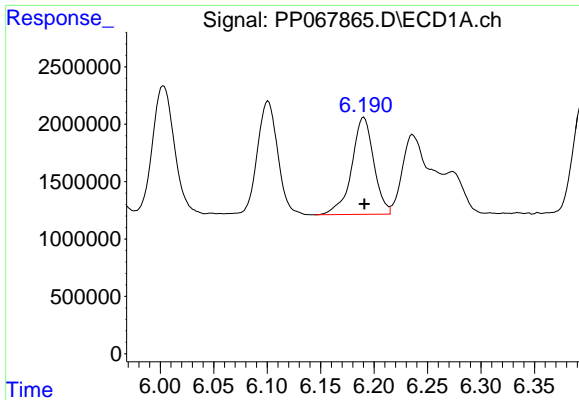
#14 AR-1232-4

R.T.: 6.101 min  
 Delta R.T.: 0.000 min  
 Response: 13409495  
 Conc: 1188.00 ng/ml



#14 AR-1232-4

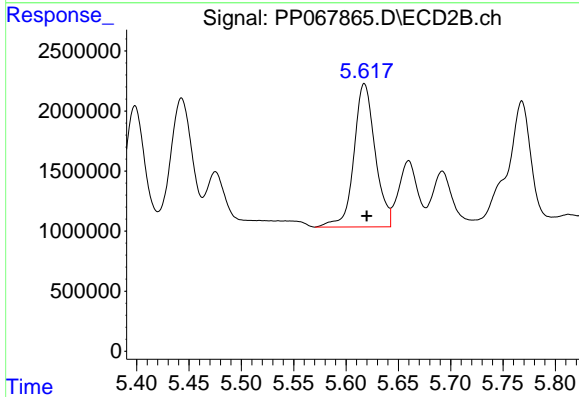
R.T.: 5.443 min  
 Delta R.T.: -0.002 min  
 Response: 15257856  
 Conc: 1323.16 ng/ml



#15 AR-1232-5

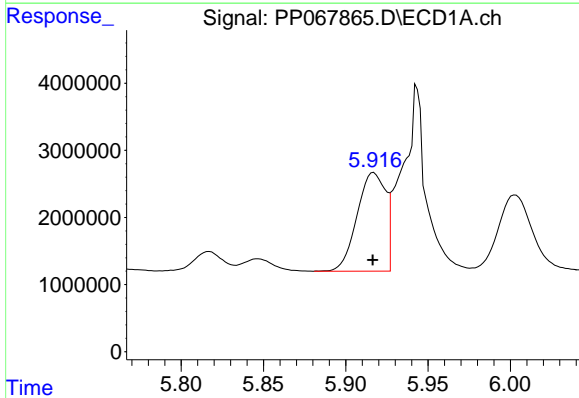
R.T.: 6.190 min  
 Delta R.T.: 0.000 min  
 Response: 12148311  
 Conc: 1332.02 ng/ml

Instrument :  
 ECD\_P  
 ClientSampleId :  
 AR1660CCC500



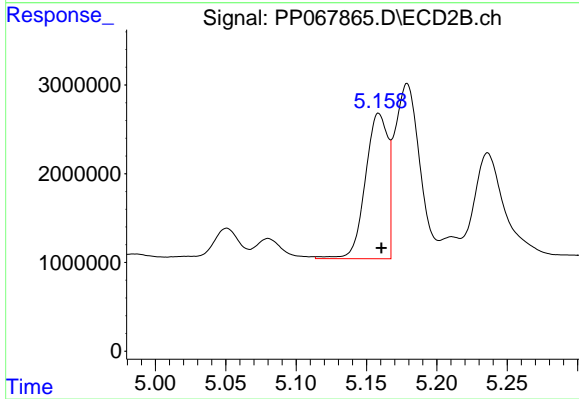
#15 AR-1232-5

R.T.: 5.618 min  
 Delta R.T.: -0.002 min  
 Response: 16865140  
 Conc: 1253.89 ng/ml



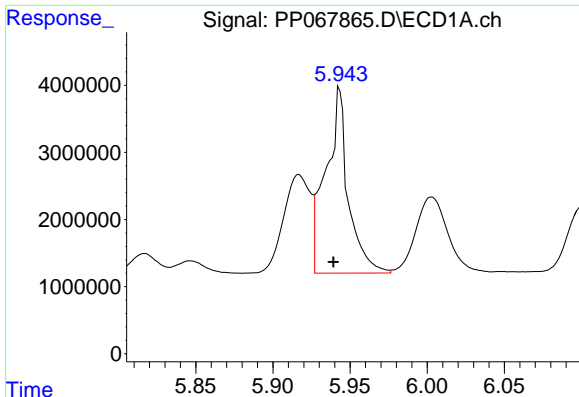
#16 AR-1242-1

R.T.: 5.917 min  
 Delta R.T.: 0.000 min  
 Response: 17585249  
 Conc: 629.46 ng/ml



#16 AR-1242-1

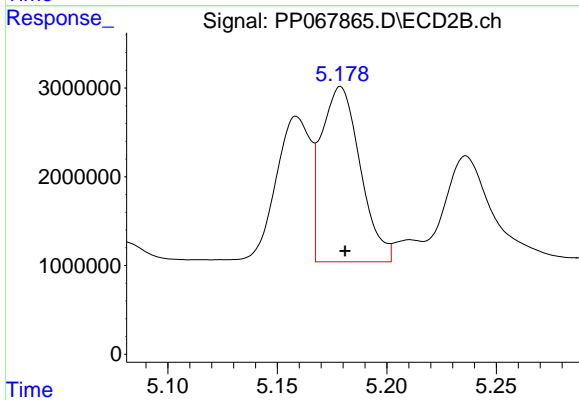
R.T.: 5.159 min  
 Delta R.T.: -0.002 min  
 Response: 18253490  
 Conc: 627.78 ng/ml



#17 AR-1242-2

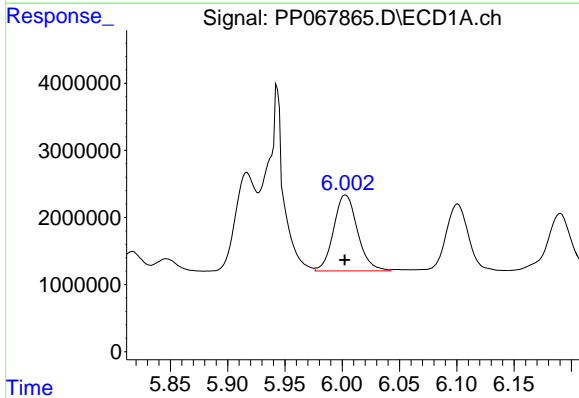
R.T.: 5.944 min  
 Delta R.T.: 0.004 min  
 Response: 28121732  
 Conc: 692.06 ng/ml

Instrument :  
 ECD\_P  
 ClientSampleId :  
 AR1660CCC500



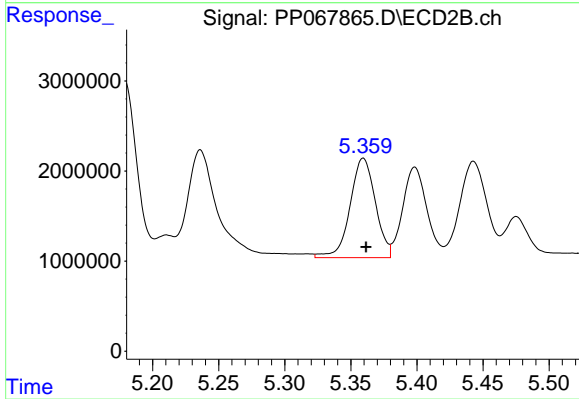
#17 AR-1242-2

R.T.: 5.179 min  
 Delta R.T.: -0.002 min  
 Response: 24388795  
 Conc: 607.48 ng/ml



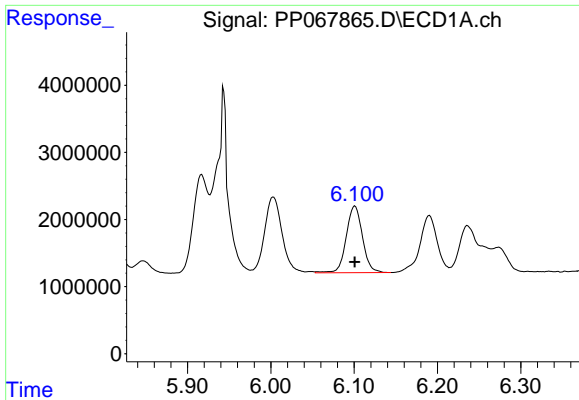
#18 AR-1242-3

R.T.: 6.003 min  
 Delta R.T.: 0.000 min  
 Response: 16416072  
 Conc: 608.80 ng/ml



#18 AR-1242-3

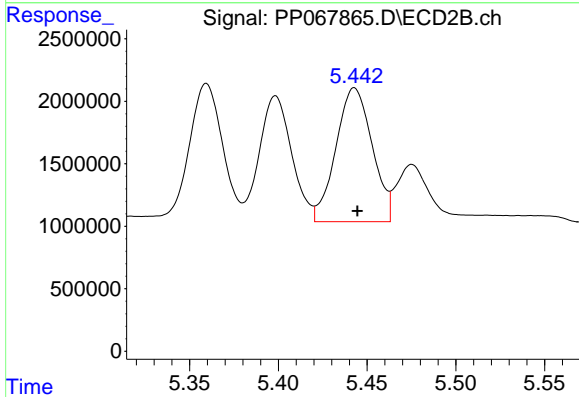
R.T.: 5.359 min  
 Delta R.T.: -0.002 min  
 Response: 14740695  
 Conc: 655.29 ng/ml



#19 AR-1242-4

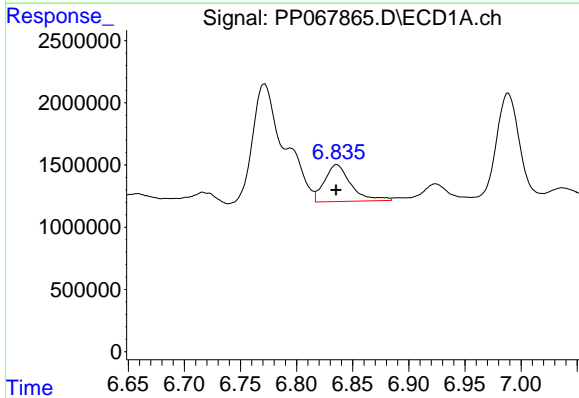
R.T.: 6.101 min  
 Delta R.T.: 0.000 min  
 Response: 13409495  
 Conc: 625.14 ng/ml

Instrument :  
 ECD\_P  
 ClientSampleId :  
 AR1660CCC500



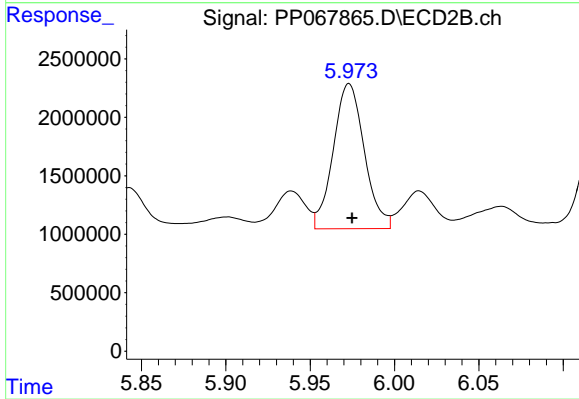
#19 AR-1242-4

R.T.: 5.443 min  
 Delta R.T.: -0.002 min  
 Response: 15257856  
 Conc: 642.77 ng/ml



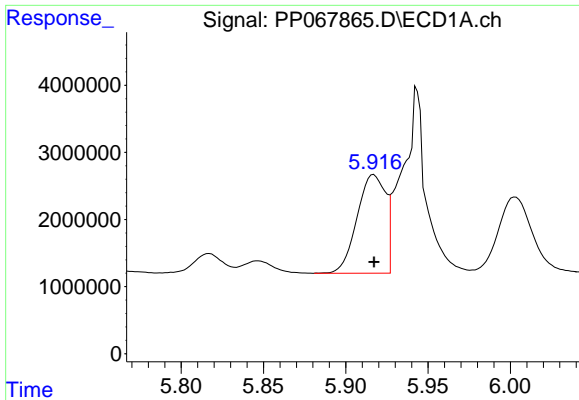
#20 AR-1242-5

R.T.: 6.836 min  
 Delta R.T.: 0.000 min  
 Response: 4864528  
 Conc: 201.63 ng/ml



#20 AR-1242-5

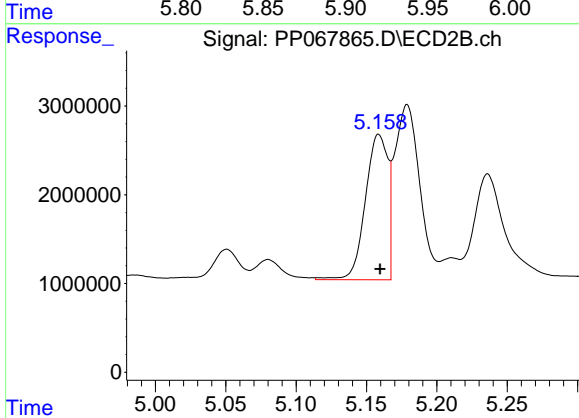
R.T.: 5.973 min  
 Delta R.T.: -0.002 min  
 Response: 15921776  
 Conc: 555.74 ng/ml



#21 AR-1248-1

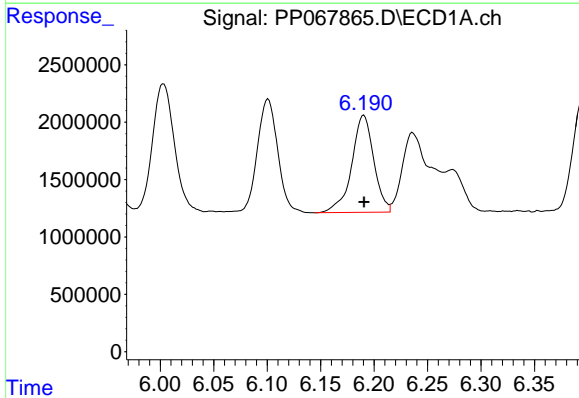
R.T.: 5.917 min  
 Delta R.T.: 0.000 min  
 Response: 17585249  
 Conc: 820.86 ng/ml

Instrument :  
 ECD\_P  
 ClientSampleId :  
 AR1660CCC500



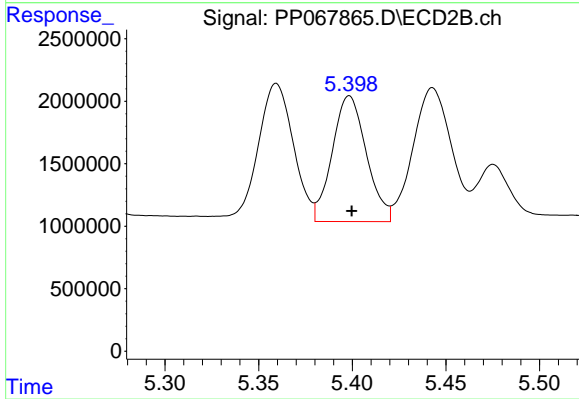
#21 AR-1248-1

R.T.: 5.159 min  
 Delta R.T.: 0.000 min  
 Response: 18253490  
 Conc: 805.40 ng/ml



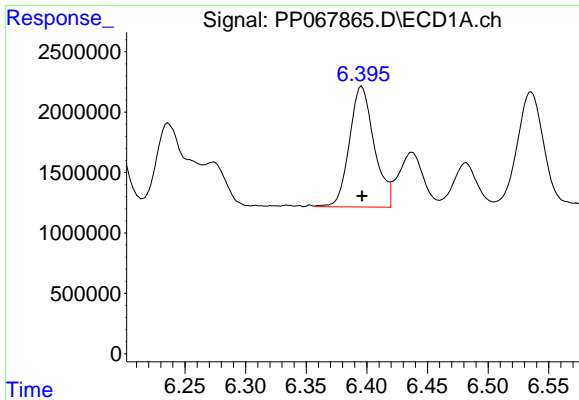
#22 AR-1248-2

R.T.: 6.190 min  
 Delta R.T.: 0.000 min  
 Response: 12148311  
 Conc: 361.38 ng/ml



#22 AR-1248-2

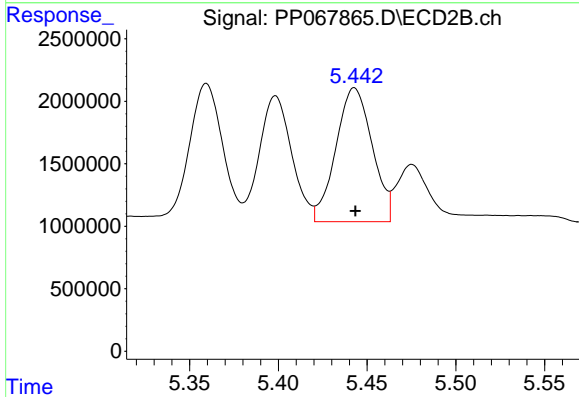
R.T.: 5.398 min  
 Delta R.T.: -0.001 min  
 Response: 12786410  
 Conc: 386.35 ng/ml



#23 AR-1248-3

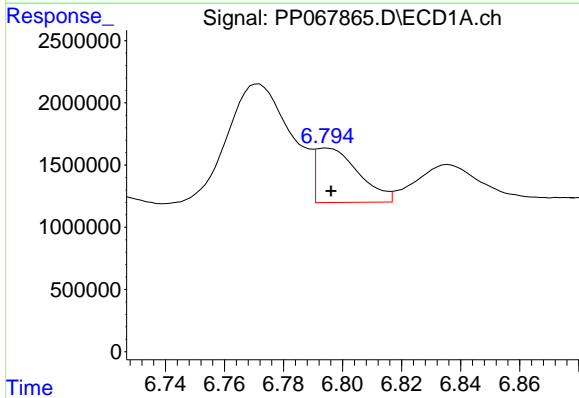
R.T.: 6.396 min  
 Delta R.T.: 0.000 min  
 Response: 14185694  
 Conc: 387.32 ng/ml

Instrument :  
 ECD\_P  
 ClientSampleId :  
 AR1660CCC500



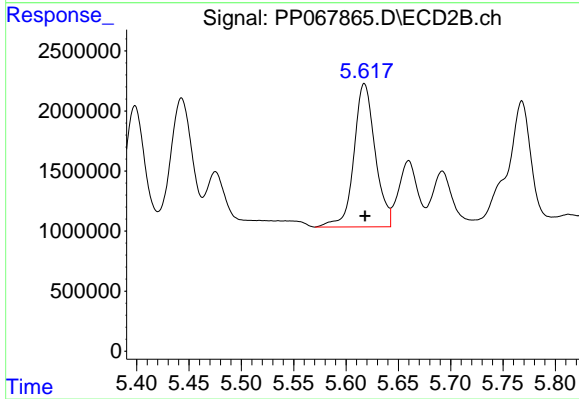
#23 AR-1248-3

R.T.: 5.443 min  
 Delta R.T.: 0.000 min  
 Response: 15257856  
 Conc: 442.58 ng/ml



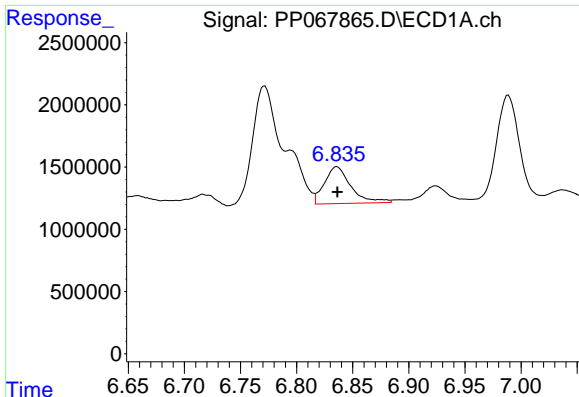
#24 AR-1248-4

R.T.: 6.795 min  
 Delta R.T.: -0.001 min  
 Response: 4376705  
 Conc: 108.20 ng/ml



#24 AR-1248-4

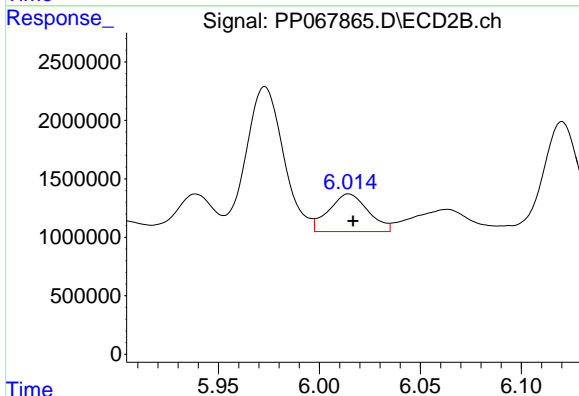
R.T.: 5.618 min  
 Delta R.T.: 0.000 min  
 Response: 16865140  
 Conc: 411.79 ng/ml



#25 AR-1248-5

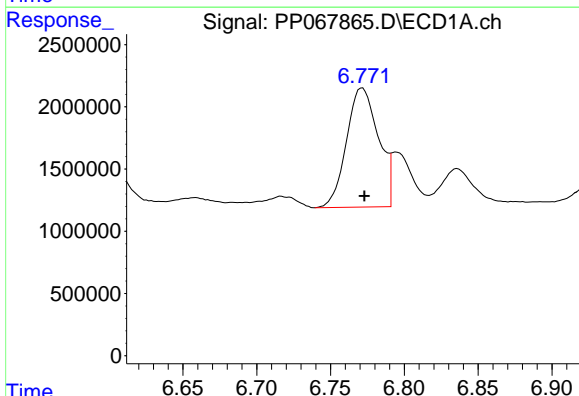
R.T.: 6.836 min  
 Delta R.T.: 0.000 min  
 Response: 4864528  
 Conc: 122.65 ng/ml

Instrument :  
 ECD\_P  
 ClientSampleId :  
 AR1660CCC500



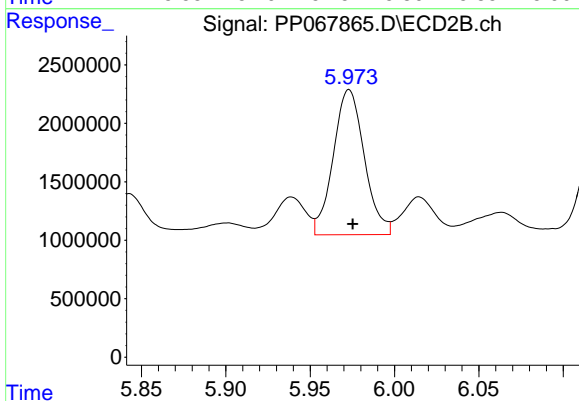
#25 AR-1248-5

R.T.: 6.015 min  
 Delta R.T.: -0.002 min  
 Response: 4373980  
 Conc: 116.82 ng/ml



#26 AR-1254-1

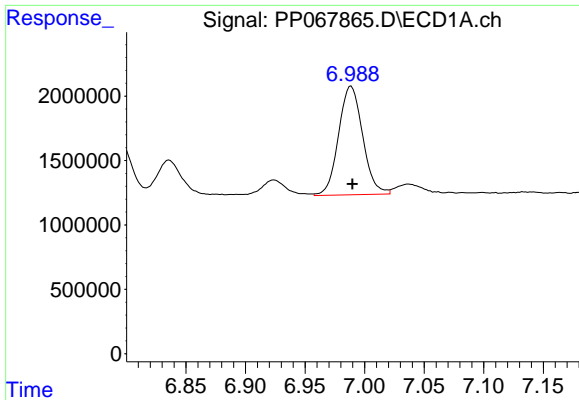
R.T.: 6.771 min  
 Delta R.T.: -0.001 min  
 Response: 14369488  
 Conc: 320.87 ng/ml



#26 AR-1254-1

R.T.: 5.973 min  
 Delta R.T.: -0.002 min  
 Response: 15921776  
 Conc: 269.48 ng/ml

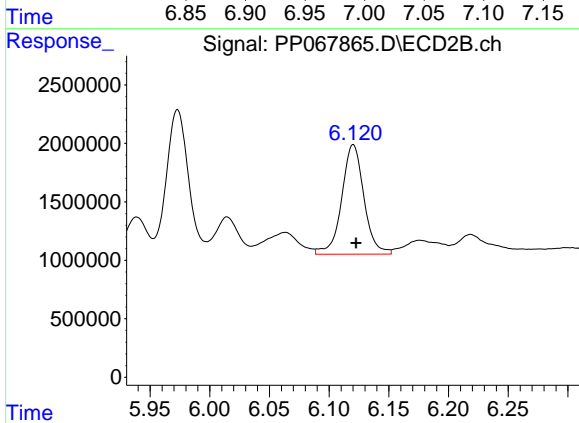




#27 AR-1254-2

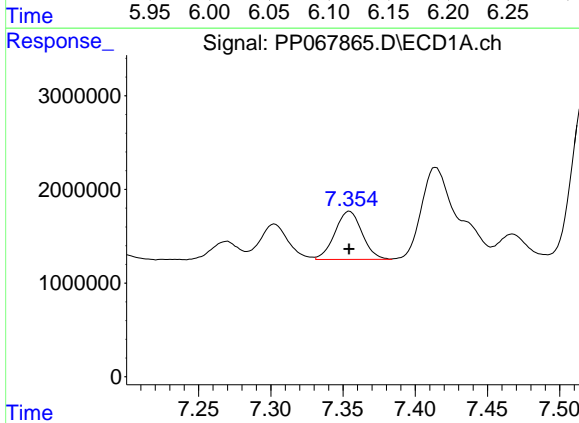
R.T.: 6.989 min  
 Delta R.T.: -0.001 min  
 Response: 11874722  
 Conc: 179.65 ng/ml

Instrument :  
 ECD\_P  
 ClientSampleId :  
 AR1660CCC500



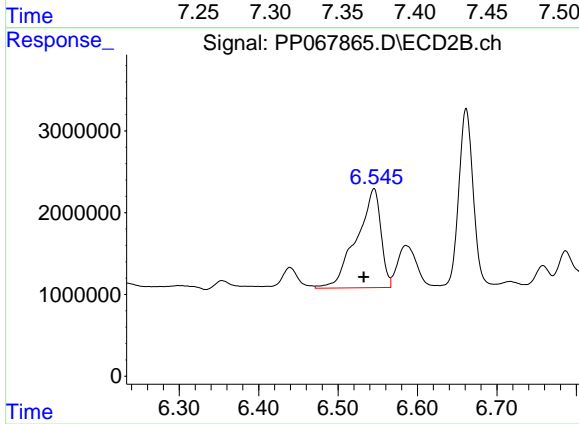
#27 AR-1254-2

R.T.: 6.120 min  
 Delta R.T.: -0.002 min  
 Response: 12138848  
 Conc: 231.37 ng/ml



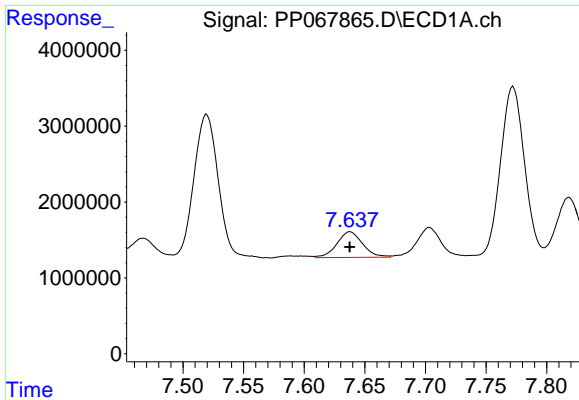
#28 AR-1254-3

R.T.: 7.355 min  
 Delta R.T.: 0.000 min  
 Response: 6719517  
 Conc: 96.75 ng/ml



#28 AR-1254-3

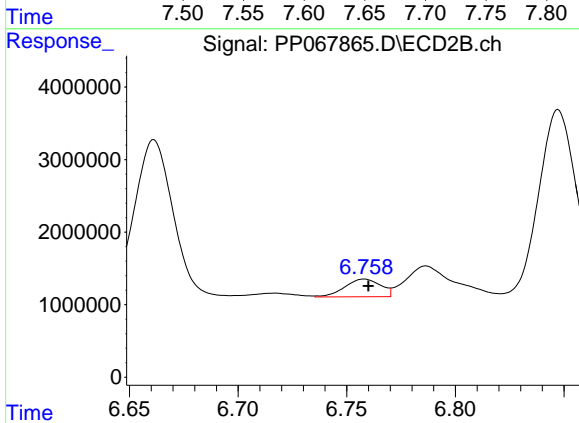
R.T.: 6.545 min  
 Delta R.T.: 0.013 min  
 Response: 25710932  
 Conc: 309.00 ng/ml



#29 AR-1254-4

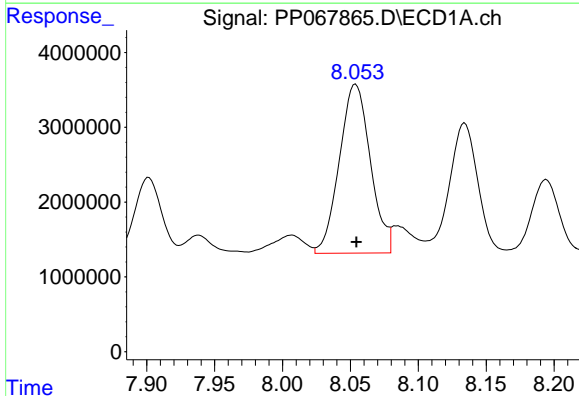
R.T.: 7.638 min  
 Delta R.T.: 0.000 min  
 Response: 5001143  
 Conc: 100.21 ng/ml

Instrument :  
 ECD\_P  
 ClientSampleId :  
 AR1660CCC500



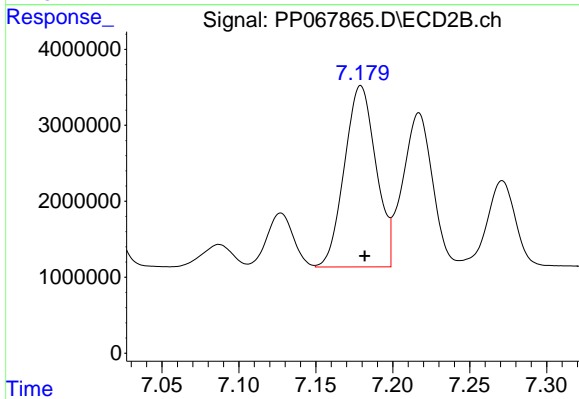
#29 AR-1254-4

R.T.: 6.758 min  
 Delta R.T.: -0.002 min  
 Response: 2817201  
 Conc: 58.36 ng/ml



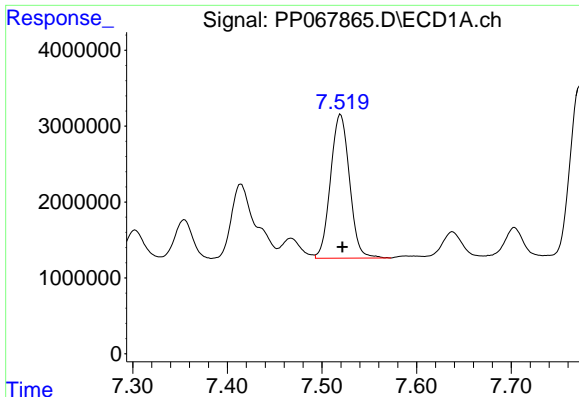
#30 AR-1254-5

R.T.: 8.054 min  
 Delta R.T.: 0.000 min  
 Response: 35892367  
 Conc: 605.34 ng/ml



#30 AR-1254-5

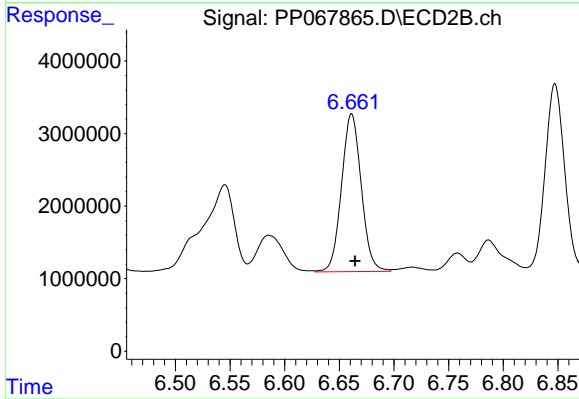
R.T.: 7.179 min  
 Delta R.T.: -0.003 min  
 Response: 33982204  
 Conc: 462.02 ng/ml



#31 AR-1260-1

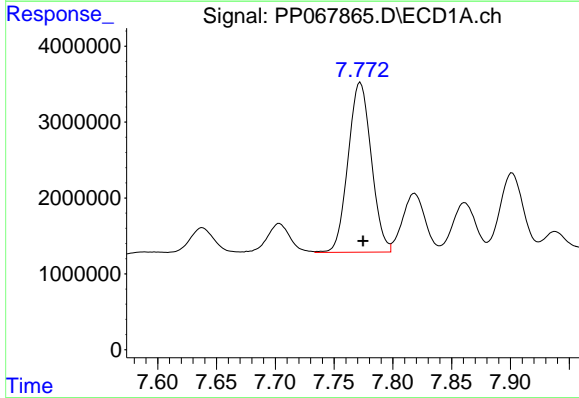
R.T.: 7.520 min  
Delta R.T.: -0.002 min  
Response: 26461446  
Conc: 489.81 ng/ml

Instrument :  
ECD\_P  
ClientSampleId :  
AR1660CCC500



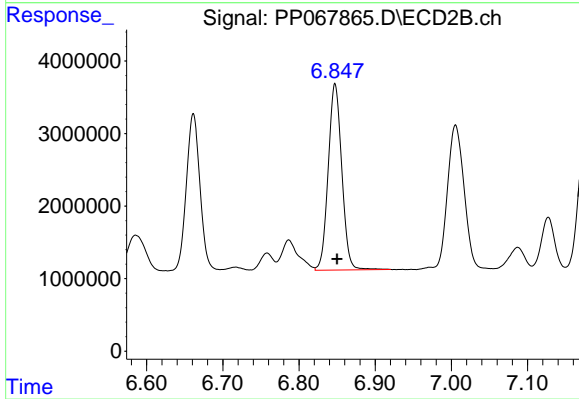
#31 AR-1260-1

R.T.: 6.661 min  
Delta R.T.: -0.003 min  
Response: 27336923  
Conc: 479.92 ng/ml



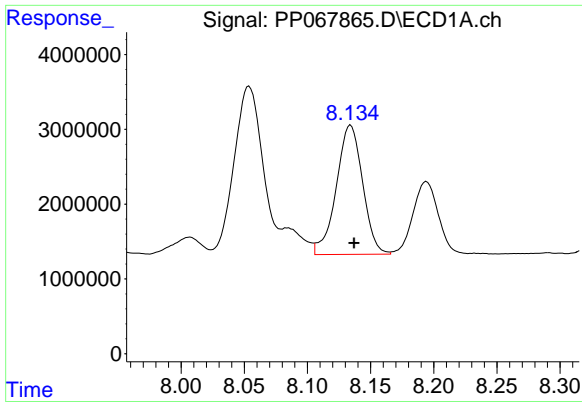
#32 AR-1260-2

R.T.: 7.772 min  
Delta R.T.: -0.002 min  
Response: 30719183  
Conc: 485.52 ng/ml



#32 AR-1260-2

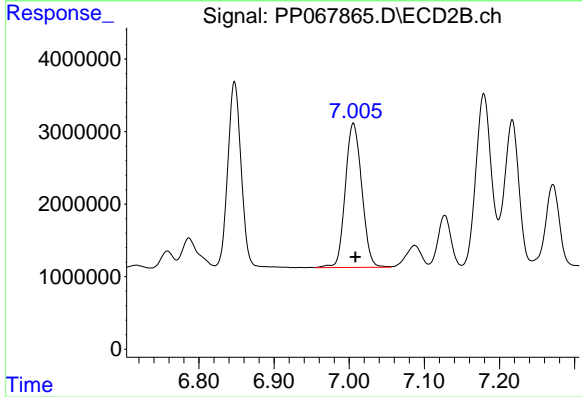
R.T.: 6.847 min  
Delta R.T.: -0.003 min  
Response: 31839728  
Conc: 477.33 ng/ml



#33 AR-1260-3

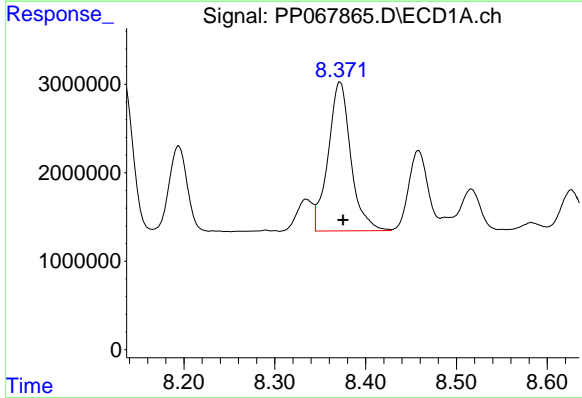
R.T.: 8.134 min  
 Delta R.T.: -0.003 min  
 Response: 25150705  
 Conc: 485.08 ng/ml

Instrument :  
 ECD\_P  
 ClientSampleId :  
 AR1660CCC500



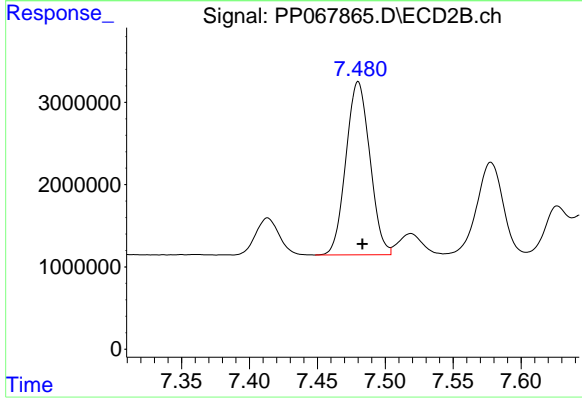
#33 AR-1260-3

R.T.: 7.006 min  
 Delta R.T.: -0.003 min  
 Response: 30269988  
 Conc: 475.19 ng/ml



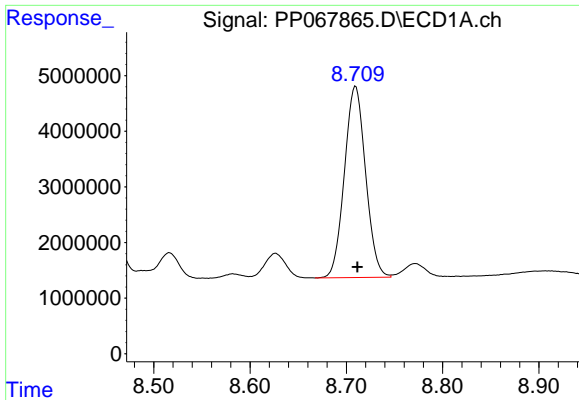
#34 AR-1260-4

R.T.: 8.372 min  
 Delta R.T.: -0.003 min  
 Response: 29143362  
 Conc: 484.15 ng/ml



#34 AR-1260-4

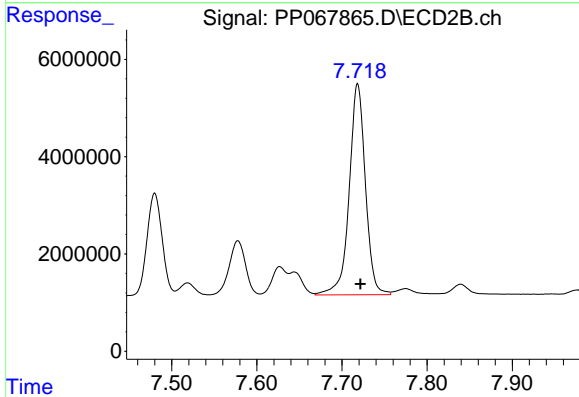
R.T.: 7.480 min  
 Delta R.T.: -0.003 min  
 Response: 25854997  
 Conc: 467.60 ng/ml



#35 AR-1260-5

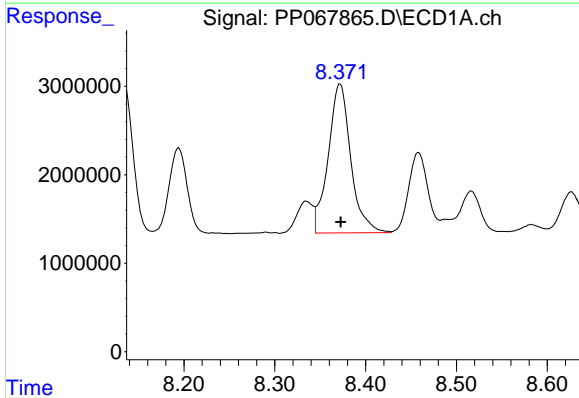
R.T.: 8.710 min  
 Delta R.T.: -0.002 min  
 Response: 52397452  
 Conc: 486.46 ng/ml

Instrument :  
 ECD\_P  
 ClientSampleId :  
 AR1660CCC500



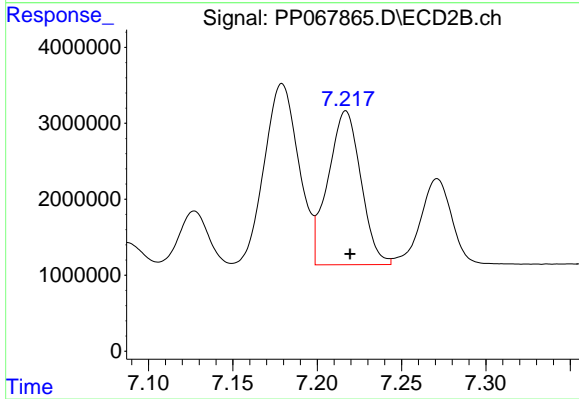
#35 AR-1260-5

R.T.: 7.718 min  
 Delta R.T.: -0.003 min  
 Response: 57284433  
 Conc: 468.40 ng/ml



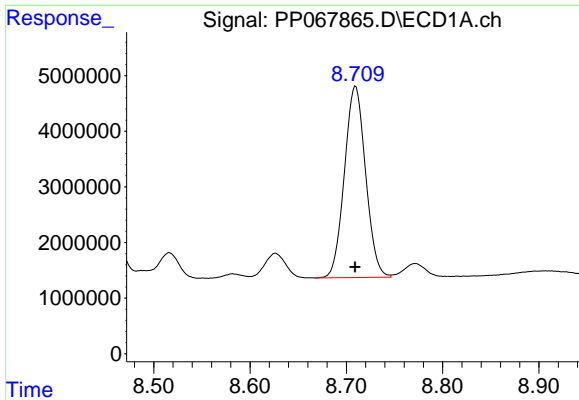
#36 AR-1262-1

R.T.: 8.372 min  
 Delta R.T.: 0.000 min  
 Response: 29143362  
 Conc: 406.06 ng/ml



#36 AR-1262-1

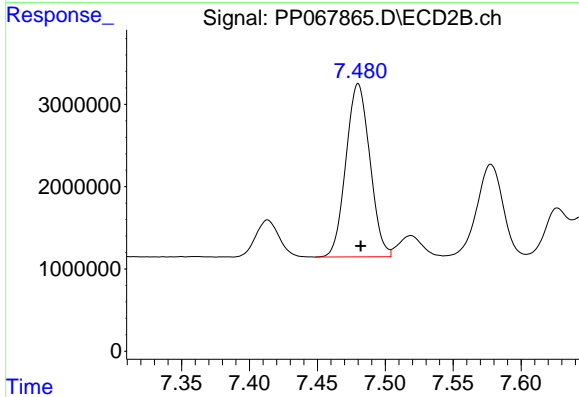
R.T.: 7.217 min  
 Delta R.T.: -0.002 min  
 Response: 27406574  
 Conc: 348.36 ng/ml



#37 AR-1262-2

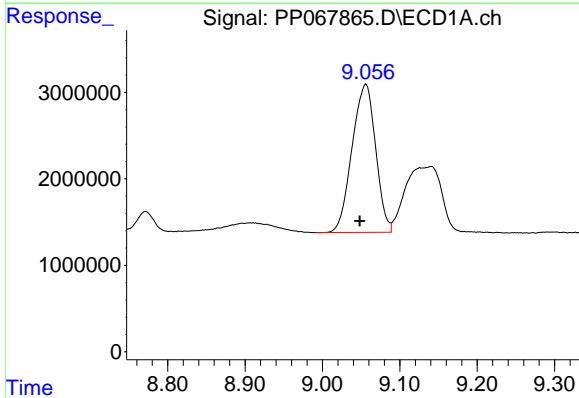
R.T.: 8.710 min  
 Delta R.T.: 0.000 min  
 Response: 52397452  
 Conc: 430.97 ng/ml

Instrument :  
 ECD\_P  
 ClientSampleId :  
 AR1660CCC500



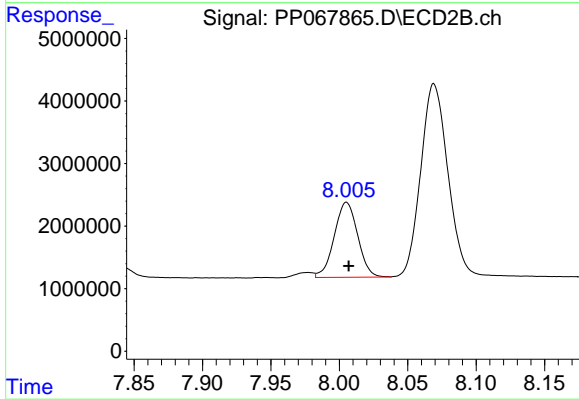
#37 AR-1262-2

R.T.: 7.480 min  
 Delta R.T.: -0.002 min  
 Response: 25854997  
 Conc: 364.35 ng/ml



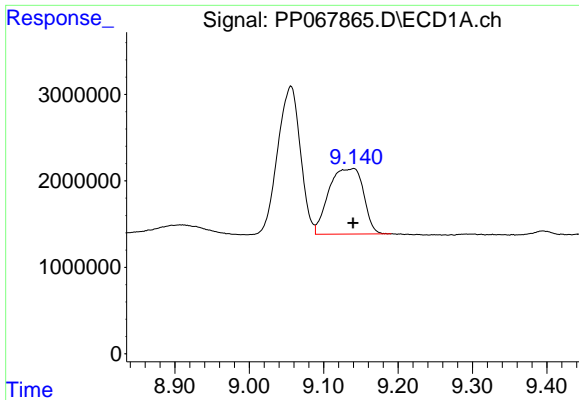
#38 AR-1262-3

R.T.: 9.056 min  
 Delta R.T.: 0.008 min  
 Response: 36244088  
 Conc: 409.47 ng/ml



#38 AR-1262-3

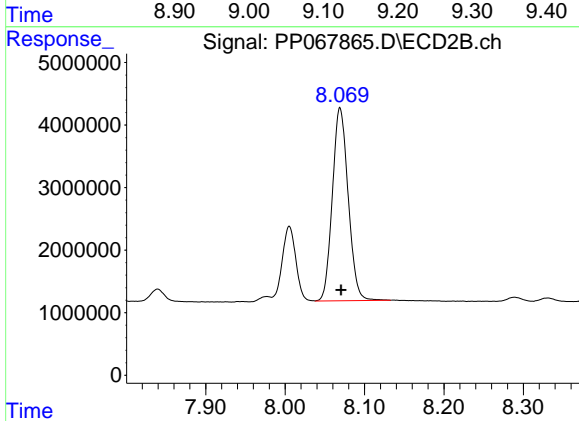
R.T.: 8.005 min  
 Delta R.T.: -0.002 min  
 Response: 14302148  
 Conc: 250.48 ng/ml



#39 AR-1262-4

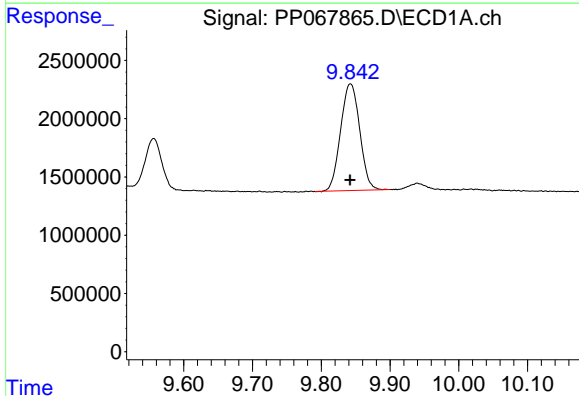
R.T.: 9.140 min  
 Delta R.T.: 0.000 min  
 Response: 24493283  
 Conc: 350.18 ng/ml

Instrument :  
 ECD\_P  
 ClientSampleId :  
 AR1660CCC500



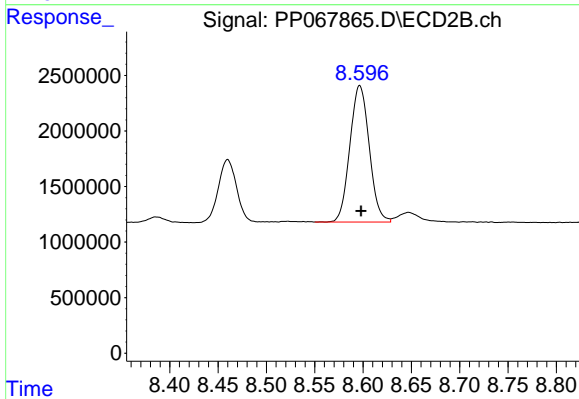
#39 AR-1262-4

R.T.: 8.069 min  
 Delta R.T.: -0.001 min  
 Response: 42729433  
 Conc: 425.44 ng/ml



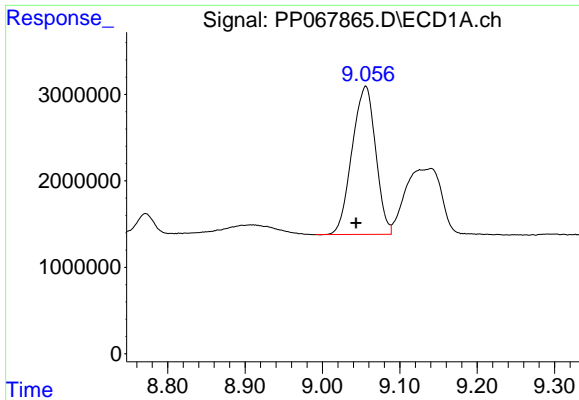
#40 AR-1262-5

R.T.: 9.843 min  
 Delta R.T.: 0.000 min  
 Response: 17688578  
 Conc: 378.03 ng/ml



#40 AR-1262-5

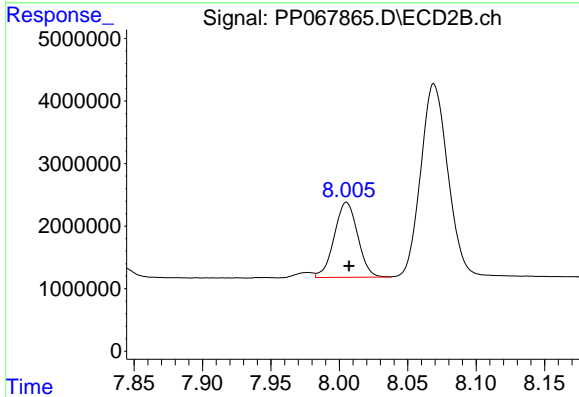
R.T.: 8.597 min  
 Delta R.T.: -0.002 min  
 Response: 17140368  
 Conc: 342.69 ng/ml



#41 AR-1268-1

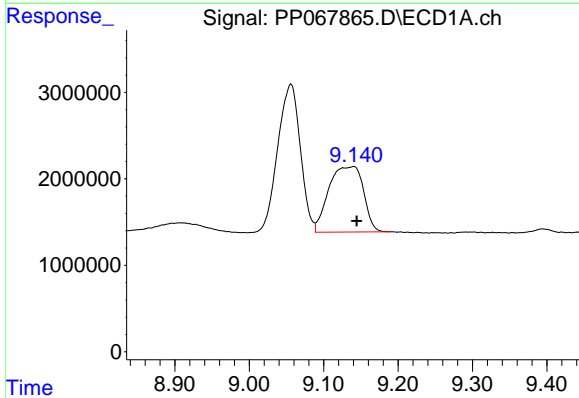
R.T.: 9.056 min  
 Delta R.T.: 0.013 min  
 Response: 36244088  
 Conc: 237.43 ng/ml

Instrument :  
 ECD\_P  
 ClientSampleId :  
 AR1660CCC500



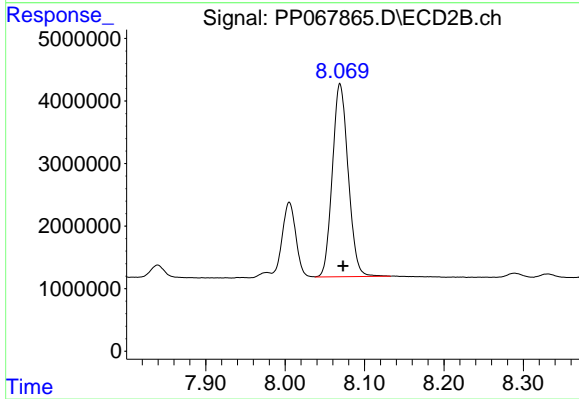
#41 AR-1268-1

R.T.: 8.005 min  
 Delta R.T.: -0.002 min  
 Response: 14302148  
 Conc: 89.87 ng/ml



#42 AR-1268-2

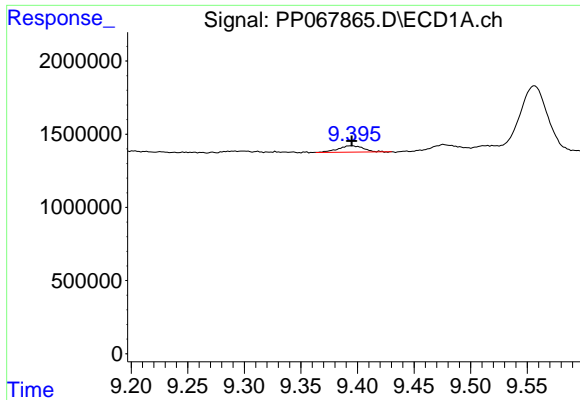
R.T.: 9.140 min  
 Delta R.T.: -0.004 min  
 Response: 24493283  
 Conc: 179.31 ng/ml



#42 AR-1268-2

R.T.: 8.069 min  
 Delta R.T.: -0.004 min  
 Response: 42729433  
 Conc: 298.42 ng/ml

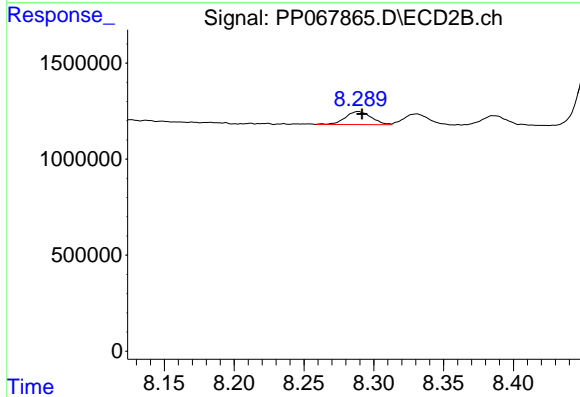




#43 AR-1268-3

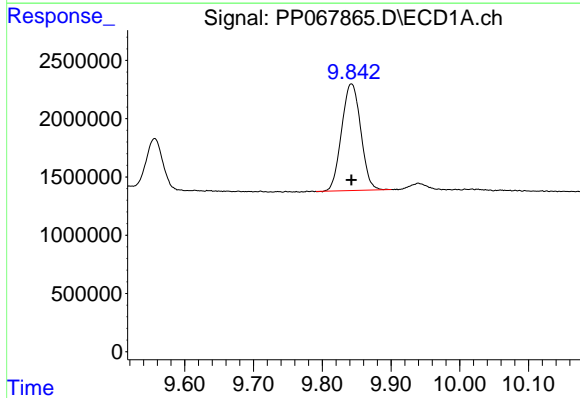
R.T.: 9.395 min  
 Delta R.T.: 0.000 min  
 Response: 677097  
 Conc: 5.60 ng/ml

Instrument :  
 ECD\_P  
 ClientSampleId :  
 AR1660CCC500



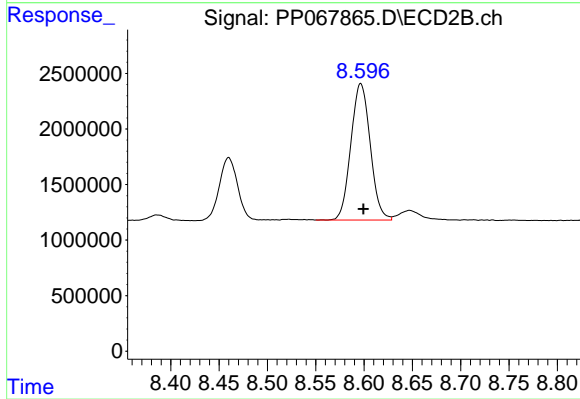
#43 AR-1268-3

R.T.: 8.289 min  
 Delta R.T.: -0.003 min  
 Response: 871829  
 Conc: 6.84 ng/ml



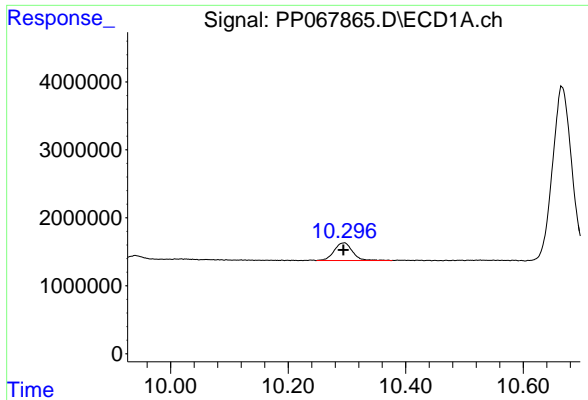
#44 AR-1268-4

R.T.: 9.843 min  
 Delta R.T.: 0.000 min  
 Response: 17688578  
 Conc: 348.06 ng/ml



#44 AR-1268-4

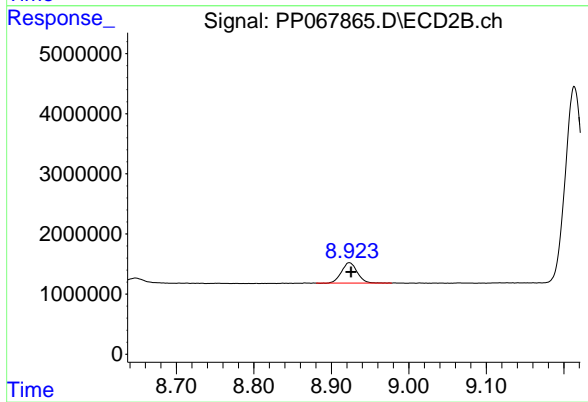
R.T.: 8.597 min  
 Delta R.T.: -0.003 min  
 Response: 17140368  
 Conc: 303.50 ng/ml



#45 AR-1268-5

R.T.: 10.295 min  
Delta R.T.: 0.001 min  
Response: 5637401  
Conc: 15.09 ng/ml

Instrument :  
ECD\_P  
ClientSampleId :  
AR1660CCC500



#45 AR-1268-5

R.T.: 8.923 min  
Delta R.T.: -0.002 min  
Response: 4844576  
Conc: 12.82 ng/ml