

Data Path : Z:\pestpcbsrv\HPCHEM1\ECD_P\Data\PP101624\
 Data File : PP067974.D
 Signal(s) : Signal #1: ECD1A.ch Signal #2: ECD2B.ch
 Acq On : 17 Oct 2024 08:01
 Operator : YP\AJ
 Sample : I.BLK
 Misc :
 ALS Vial : 2 Sample Multiplier: 1

Instrument :
 ECD_P
 ClientSampleId :
 I.BLK

Integration File signal 1: autoint1.e
 Integration File signal 2: autoint2.e
 Quant Time: Oct 17 08:32:34 2024
 Quant Method : Z:\pestpcbsrv\HPCHEM1\ECD_P\methods\PP100824.M
 Quant Title : GC EXTRACTABLES
 QLast Update : Wed Oct 09 05:48:32 2024
 Response via : Initial Calibration
 Integrator: ChemStation

Volume Inj. : 2 µl
 Signal #1 Phase : ZB-MR2 Signal #2 Phase: ZB-MR2
 Signal #1 Info : 30Mx0.32mmx 0.50µ Signal #2 Info : 30M x 0.32mm x 0.25µm

Compound	RT#1	RT#2	Resp#1	Resp#2	ng/ml	ng/ml
System Monitoring Compounds						
1) SA Tetrachlo...	4.751	4.049	21061705	20487808	22.754	20.277
2) SA Decachlor...	10.661	9.209	28665650	26848075	24.898	23.940
Target Compounds						
3) L1 AR-1016-1	5.872f	5.162	614544	591788	18.585	16.914
4) L1 AR-1016-2	5.977	5.162	214532	591788	4.399	12.286 #
5) L1 AR-1016-3	5.985	5.354	152322	122170	4.834	4.535
6) L1 AR-1016-4	6.055f	5.397	997451	319796	38.746	13.278 #
7) L1 AR-1016-5	6.412	5.599	910299	548160	33.631	18.026 #
8) L2 AR-1221-1	5.006f	4.310f	715533	90761	55.858	6.891 #
9) L2 AR-1221-2	5.061	4.358	324746	378803	34.326	38.028
10) L2 AR-1221-3	5.061f	4.438	324746	977960	11.234	31.414 #
11) L3 AR-1232-1	5.061f	4.438	324746	977960	14.206	40.191 #
12) L3 AR-1232-2	0.000	5.162	0	591788	N.D.	26.460 #
13) L3 AR-1232-3	5.977f	5.354	214532	122170	9.631	10.229
14) L3 AR-1232-4	6.055f	5.433	997451	95934	88.368	8.319 #
15) L3 AR-1232-5	6.180	5.599	212403	548160	23.289	40.755 #
16) L4 AR-1242-1	5.872f	5.162	614544	591788	21.997	20.353
17) L4 AR-1242-2	5.977f	5.162	214532	591788	5.280	14.740 #
18) L4 AR-1242-3	5.985	5.354	152322	122170	5.649	5.431
19) L4 AR-1242-4	6.055f	5.433	997451	95934	46.500	4.041 #
20) L4 AR-1242-5	6.833	5.969	90139	157067	3.736	5.482 #
21) L5 AR-1248-1	5.872f	5.162	614544	591788	28.686	26.112
22) L5 AR-1248-2	6.180	5.397	212403	319796	6.318	9.663 #
23) L5 AR-1248-3	6.412	5.433	910299	95934	24.854	2.783 #
24) L5 AR-1248-4	6.806	5.599	276426	548160	6.834	13.384 #
25) L5 AR-1248-5	6.833	6.012	90139	277076	2.273	7.400 #
26) L6 AR-1254-1	6.766	5.969	534905	157067	11.945	2.658 #
27) L6 AR-1254-2	6.991	6.124	479379	1103118	7.253	21.026 #
28) L6 AR-1254-3	7.346	6.527	557005	1260314	8.020	15.147 #
29) L6 AR-1254-4	7.642	6.754	192953	171722	3.866	3.557
30) L6 AR-1254-5	8.056	7.183	30718	1842091	0.518	25.045 #
31) L7 AR-1260-1	7.515	6.657	190461	191093	3.526	3.355
32) L7 AR-1260-2	7.773	6.830	491782	1983718	7.773	29.739 #
33) L7 AR-1260-3	0.000	6.969f	0	71542	N.D.	1.123 #
34) L7 AR-1260-4	8.377	7.527f	53824	1811197	0.894	32.757 #
35) L7 AR-1260-5	8.694	7.714	92756	68830	0.861	0.563 #
36) L8 AR-1262-1	8.377	7.183f	53824	1842091	0.750	23.414 #
37) L8 AR-1262-2	8.694	7.527f	92756	1811197	0.763	25.523 #
38) L8 AR-1262-3	9.073	7.993	262010	254553	2.960	4.458 #
39) L8 AR-1262-4	9.073f	8.054	262010	226357	3.746	2.254 #
41) L9 AR-1268-1	9.073	7.993	262010	254553	1.716	1.600
42) L9 AR-1268-2	0.000	8.054	0	226357	N.D.	1.581 #

Data Path : Z:\pestpcbsrv\HPCHEM1\ECD_P\Data\PP101624\
 Data File : PP067974.D
 Signal(s) : Signal #1: ECD1A.ch Signal #2: ECD2B.ch
 Acq On : 17 Oct 2024 08:01
 Operator : YP\AJ
 Sample : I.BLK
 Misc :
 ALS Vial : 2 Sample Multiplier: 1

Instrument :
 ECD_P
 ClientSampleId :
 I.BLK

Integration File signal 1: autoint1.e
 Integration File signal 2: autoint2.e
 Quant Time: Oct 17 08:32:34 2024
 Quant Method : Z:\pestpcbsrv\HPCHEM1\ECD_P\methods\PP100824.M
 Quant Title : GC EXTRACTABLES
 QLast Update : Wed Oct 09 05:48:32 2024
 Response via : Initial Calibration
 Integrator: ChemStation

Volume Inj. : 2 µl
 Signal #1 Phase : ZB-MR1 Signal #2 Phase: ZB-MR2
 Signal #1 Info : 30Mx0.32mmx 0.50µ Signal #2 Info : 30M x 0.32mm x 0.25µm

	Compound	RT#1	RT#2	Resp#1	Resp#2	ng/ml	ng/ml
43)	L9 AR-1268-3	0.000	8.295	0	184889	N.D.	1.450 #
45)	L9 AR-1268-5	10.331f	8.918	1476573	-37029	3.954	N.D. #

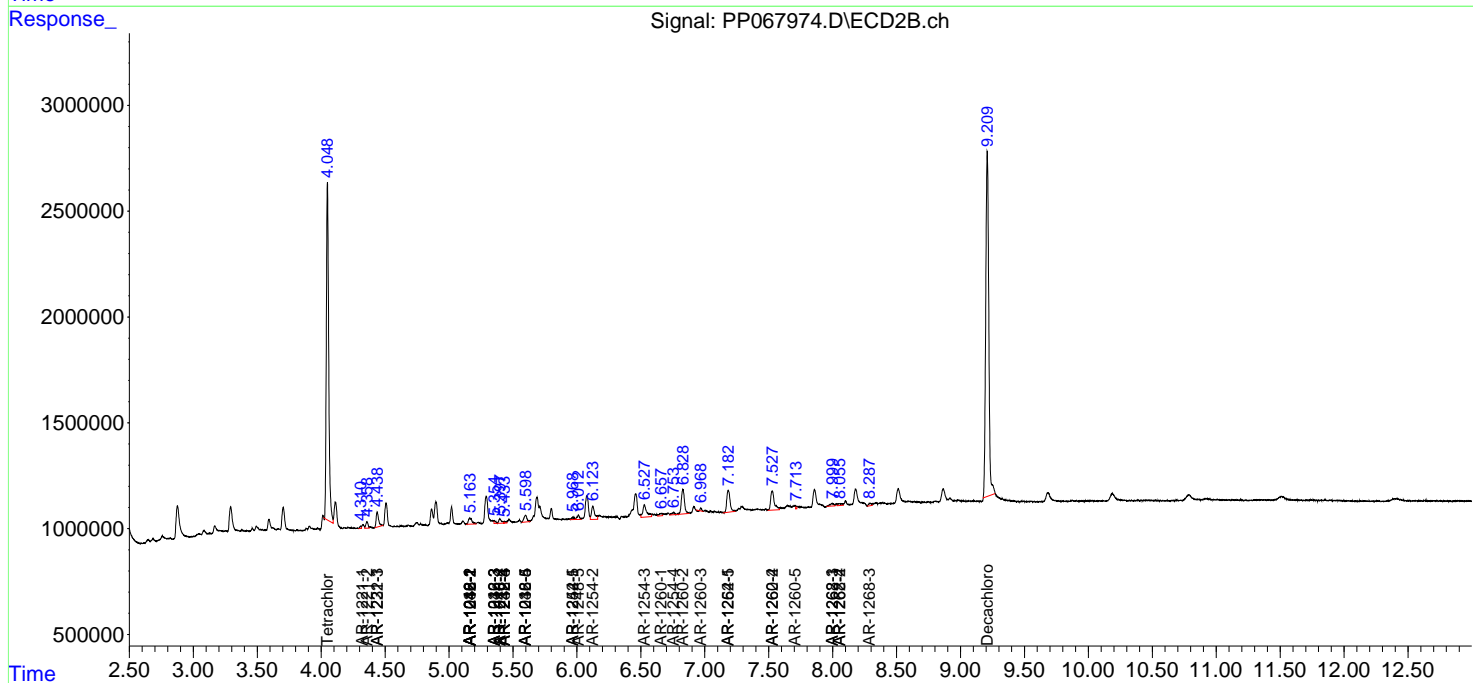
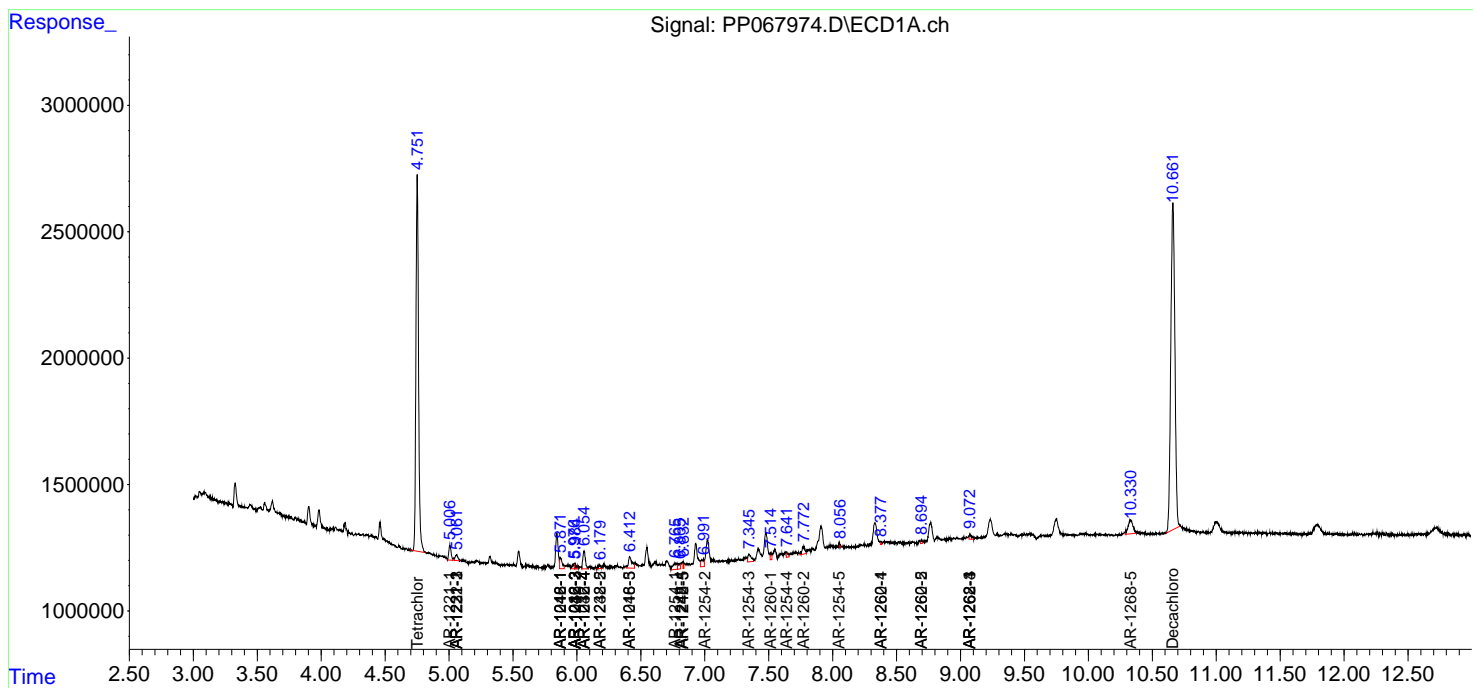
(f)=RT Delta > 1/2 Window (#)=Amounts differ by > 25% (m)=manual int.

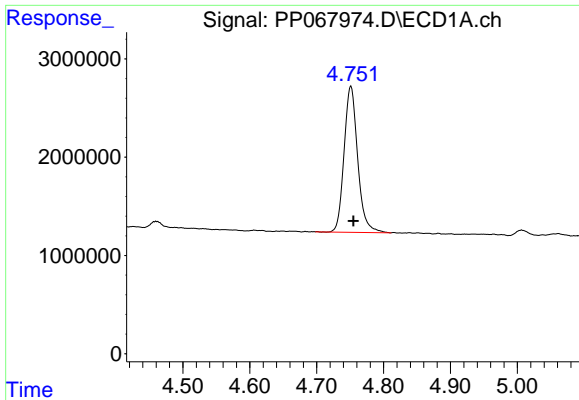
Data Path : Z:\pestpcbsrv\HPCHEM1\ECD_P\Data\PP101624\
 Data File : PP067974.D
 Signal(s) : Signal #1: ECD1A.ch Signal #2: ECD2B.ch
 Acq On : 17 Oct 2024 08:01
 Operator : YP\AJ
 Sample : I.BLK
 Misc :
 ALS Vial : 2 Sample Multiplier: 1

Instrument :
 ECD_P
 ClientSampleId :
 I.BLK

Integration File signal 1: autoint1.e
 Integration File signal 2: autoint2.e
 Quant Time: Oct 17 08:32:34 2024
 Quant Method : Z:\pestpcbsrv\HPCHEM1\ECD_P\methods\PP100824.M
 Quant Title : GC EXTRACTABLES
 QLast Update : Wed Oct 09 05:48:32 2024
 Response via : Initial Calibration
 Integrator: ChemStation

Volume Inj. : 2 µl
 Signal #1 Phase : ZB-MR1 Signal #2 Phase: ZB-MR2
 Signal #1 Info : 30Mx0.32mmx 0.50µ Signal #2 Info : 30M x 0.32mm x 0.25µm

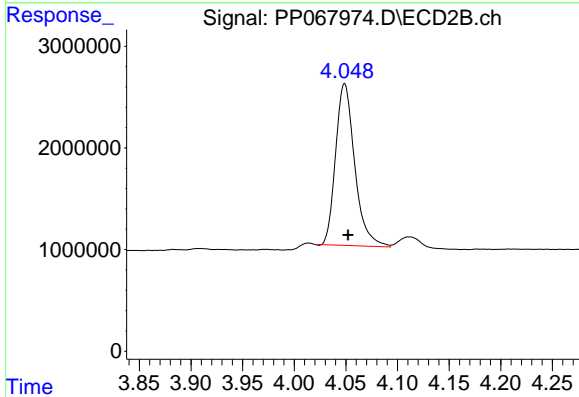




#1 Tetrachloro-m-xylene

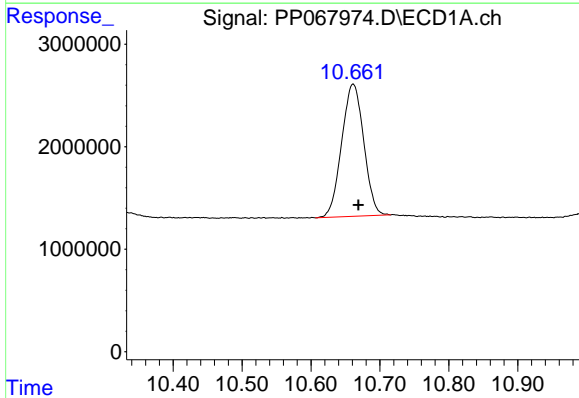
R.T.: 4.751 min
 Delta R.T.: -0.004 min
 Response: 21061705
 Conc: 22.75 ng/ml

Instrument :
 ECD_P
 ClientSampleId :
 I.BLK



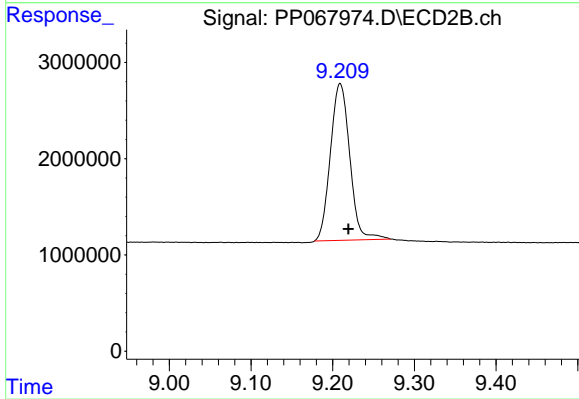
#1 Tetrachloro-m-xylene

R.T.: 4.049 min
 Delta R.T.: -0.003 min
 Response: 20487808
 Conc: 20.28 ng/ml



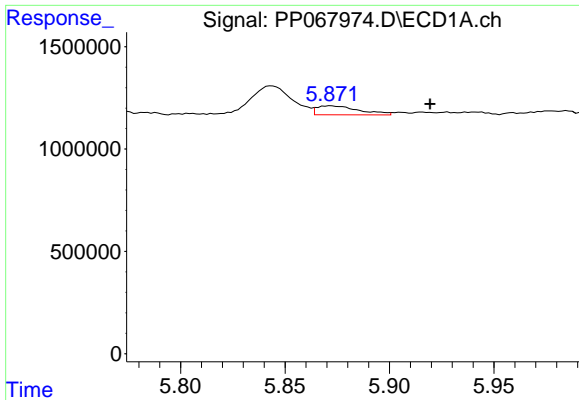
#2 Decachlorobiphenyl

R.T.: 10.661 min
 Delta R.T.: -0.007 min
 Response: 28665650
 Conc: 24.90 ng/ml



#2 Decachlorobiphenyl

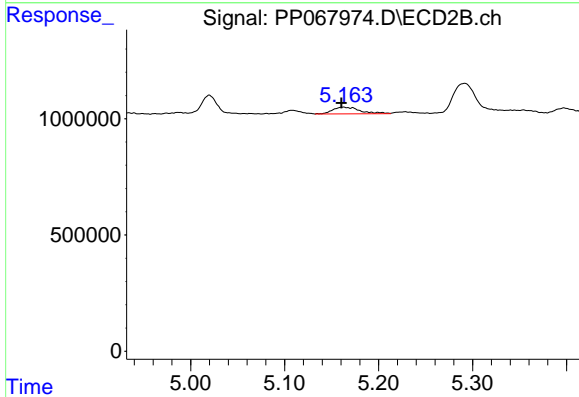
R.T.: 9.209 min
 Delta R.T.: -0.010 min
 Response: 26848075
 Conc: 23.94 ng/ml



#3 AR-1016-1

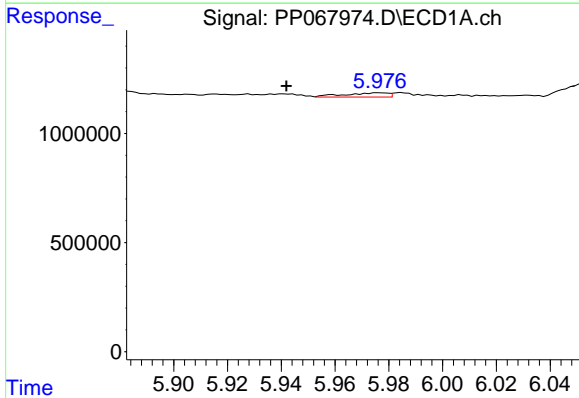
R.T.: 5.872 min
 Delta R.T.: -0.047 min
 Response: 614544
 Conc: 18.58 ng/ml

Instrument :
 ECD_P
 ClientSampleId :
 I.BLK



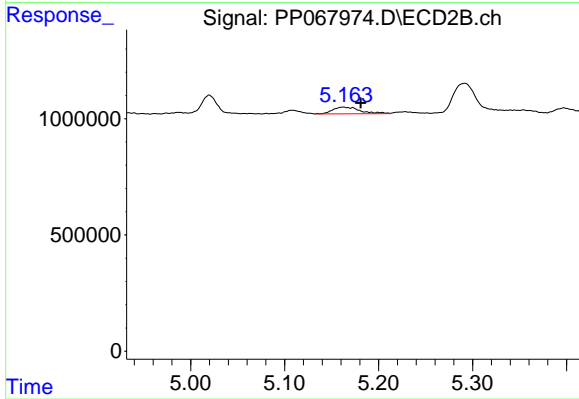
#3 AR-1016-1

R.T.: 5.162 min
 Delta R.T.: 0.002 min
 Response: 591788
 Conc: 16.91 ng/ml



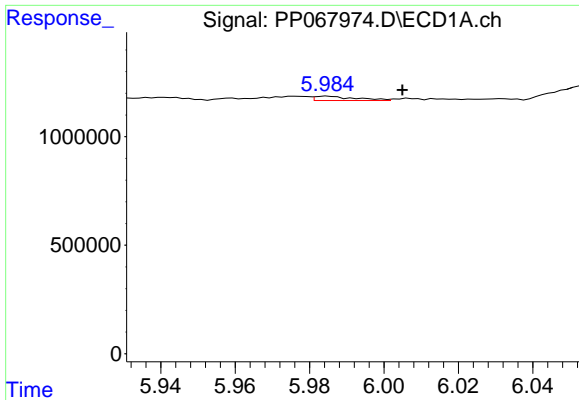
#4 AR-1016-2

R.T.: 5.977 min
 Delta R.T.: 0.035 min
 Response: 214532
 Conc: 4.40 ng/ml



#4 AR-1016-2

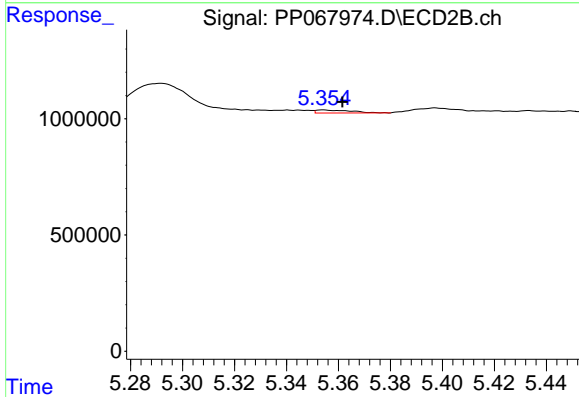
R.T.: 5.162 min
 Delta R.T.: -0.019 min
 Response: 591788
 Conc: 12.29 ng/ml



#5 AR-1016-3

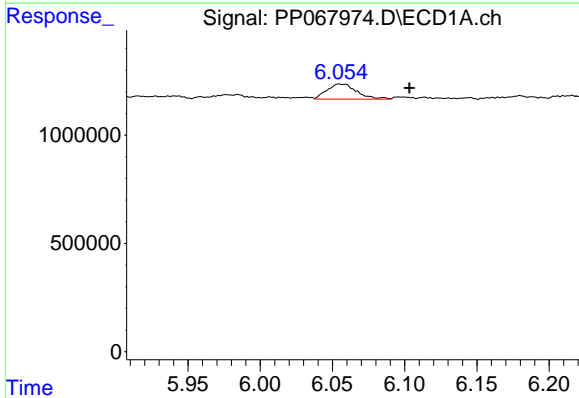
R.T.: 5.985 min
 Delta R.T.: -0.020 min
 Response: 152322
 Conc: 4.83 ng/ml

Instrument :
 ECD_P
 ClientSampleId :
 I.BLK



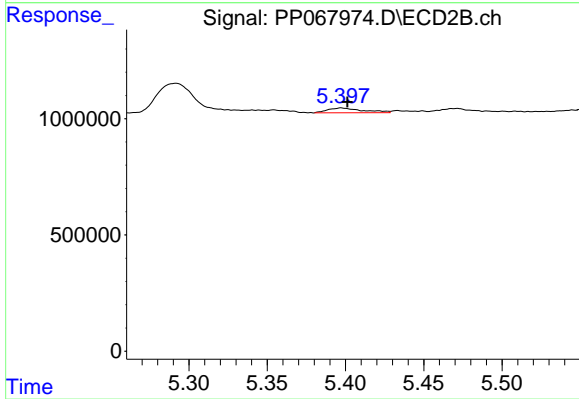
#5 AR-1016-3

R.T.: 5.354 min
 Delta R.T.: -0.007 min
 Response: 122170
 Conc: 4.54 ng/ml



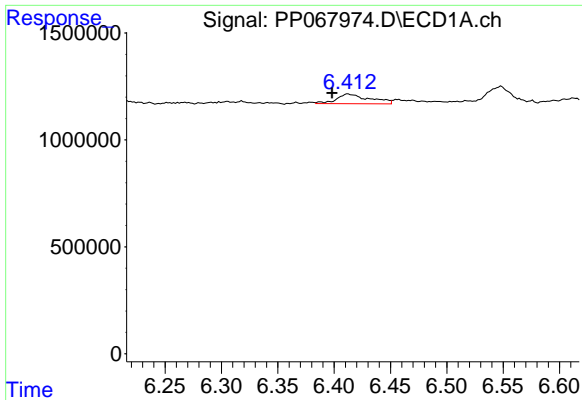
#6 AR-1016-4

R.T.: 6.055 min
 Delta R.T.: -0.048 min
 Response: 997451
 Conc: 38.75 ng/ml



#6 AR-1016-4

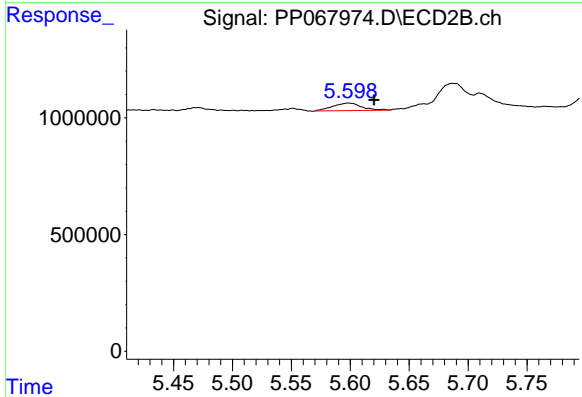
R.T.: 5.397 min
 Delta R.T.: -0.004 min
 Response: 319796
 Conc: 13.28 ng/ml



#7 AR-1016-5

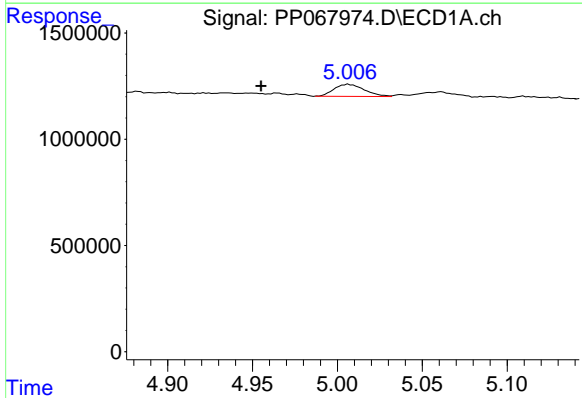
R.T.: 6.412 min
 Delta R.T.: 0.014 min
 Response: 910299
 Conc: 33.63 ng/ml

Instrument :
 ECD_P
 ClientSampleId :
 I.BLK



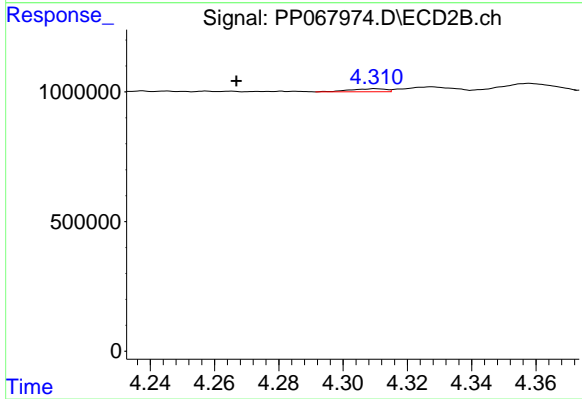
#7 AR-1016-5

R.T.: 5.599 min
 Delta R.T.: -0.021 min
 Response: 548160
 Conc: 18.03 ng/ml



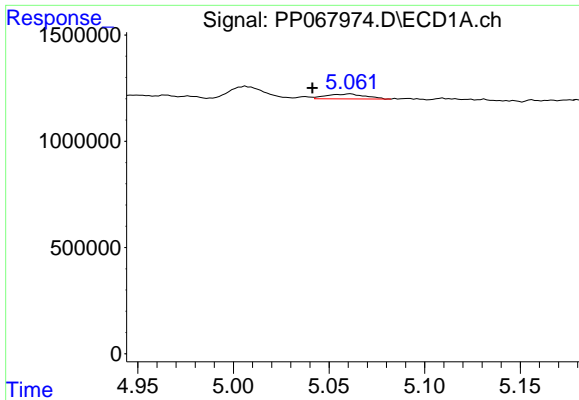
#8 AR-1221-1

R.T.: 5.006 min
 Delta R.T.: 0.051 min
 Response: 715533
 Conc: 55.86 ng/ml



#8 AR-1221-1

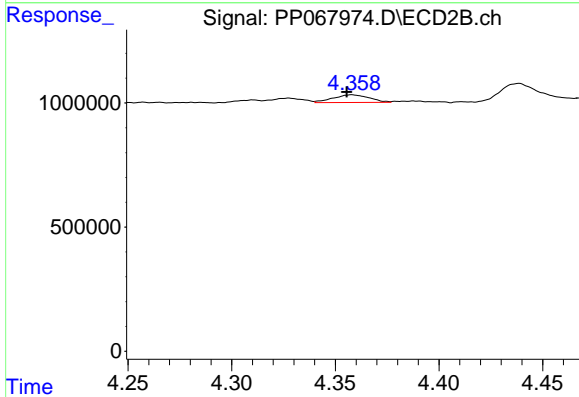
R.T.: 4.310 min
 Delta R.T.: 0.044 min
 Response: 90761
 Conc: 6.89 ng/ml



#9 AR-1221-2

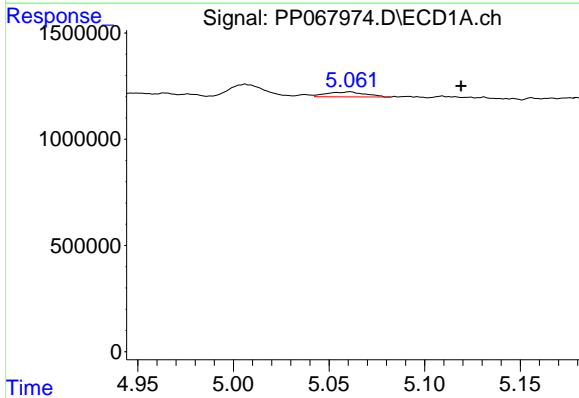
R.T.: 5.061 min
 Delta R.T.: 0.020 min
 Response: 324746
 Conc: 34.33 ng/ml

Instrument :
 ECD_P
 ClientSampleId :
 I.BLK



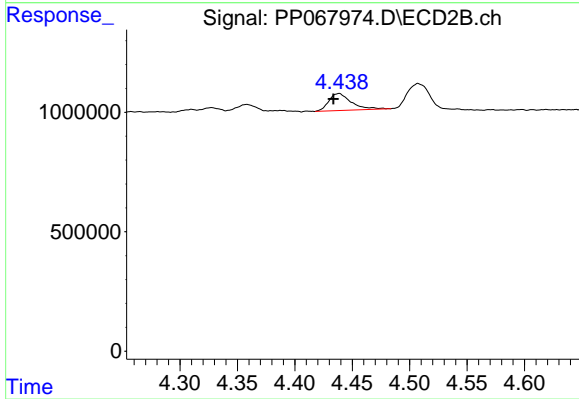
#9 AR-1221-2

R.T.: 4.358 min
 Delta R.T.: 0.002 min
 Response: 378803
 Conc: 38.03 ng/ml



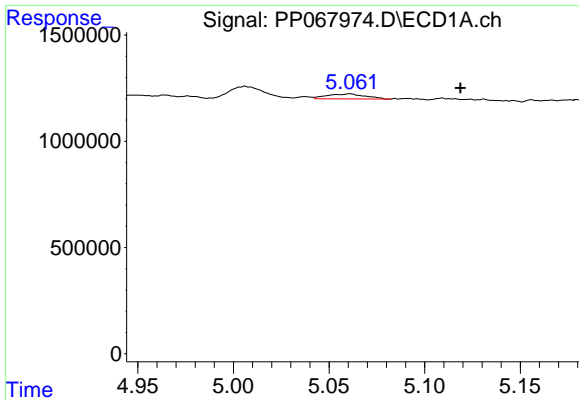
#10 AR-1221-3

R.T.: 5.061 min
 Delta R.T.: -0.058 min
 Response: 324746
 Conc: 11.23 ng/ml



#10 AR-1221-3

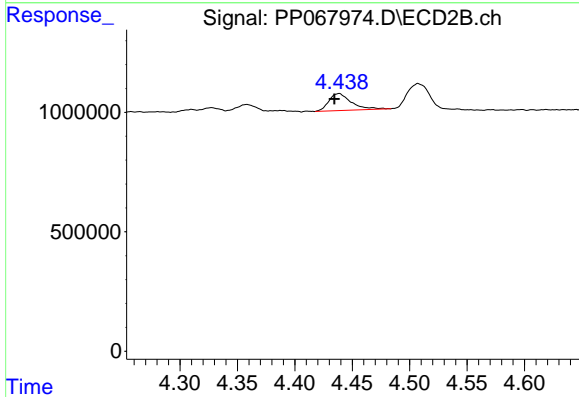
R.T.: 4.438 min
 Delta R.T.: 0.005 min
 Response: 977960
 Conc: 31.41 ng/ml



#11 AR-1232-1

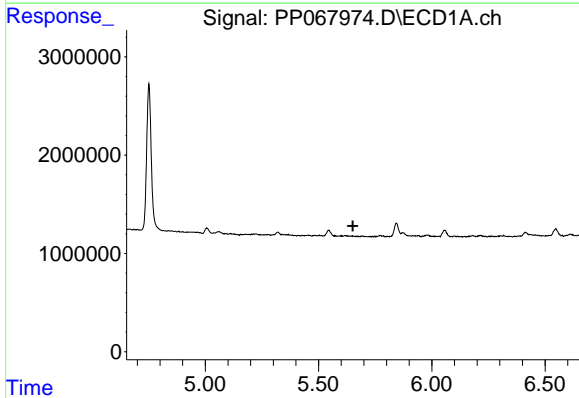
R.T.: 5.061 min
 Delta R.T.: -0.057 min
 Response: 324746
 Conc: 14.21 ng/ml

Instrument :
 ECD_P
 ClientSampleId :
 I.BLK



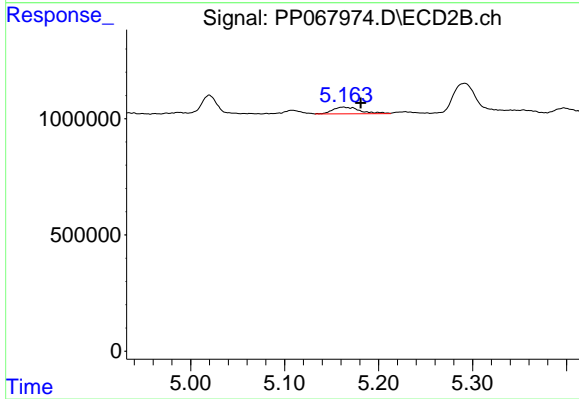
#11 AR-1232-1

R.T.: 4.438 min
 Delta R.T.: 0.004 min
 Response: 977960
 Conc: 40.19 ng/ml



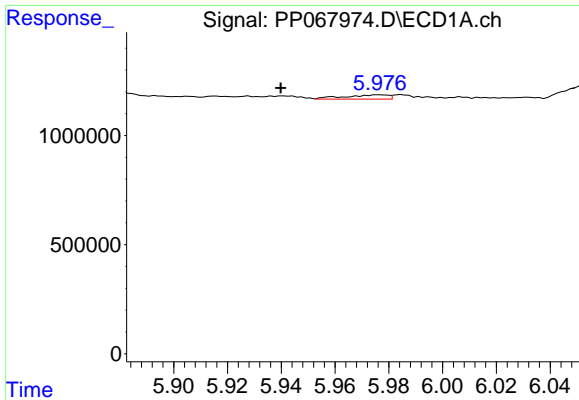
#12 AR-1232-2

R.T.: 0.000 min
 Exp R.T. : 5.651 min
 Response: 0
 Conc: N.D.



#12 AR-1232-2

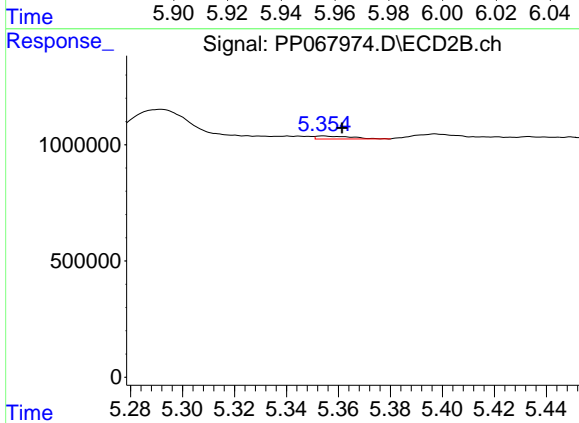
R.T.: 5.162 min
 Delta R.T.: -0.019 min
 Response: 591788
 Conc: 26.46 ng/ml



#13 AR-1232-3

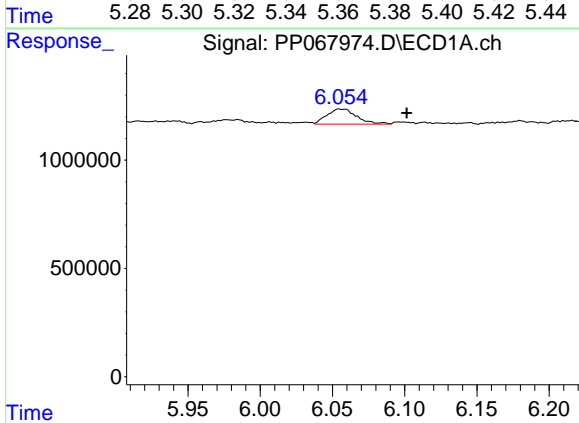
R.T.: 5.977 min
 Delta R.T.: 0.037 min
 Response: 214532
 Conc: 9.63 ng/ml

Instrument :
 ECD_P
 ClientSampleId :
 I.BLK



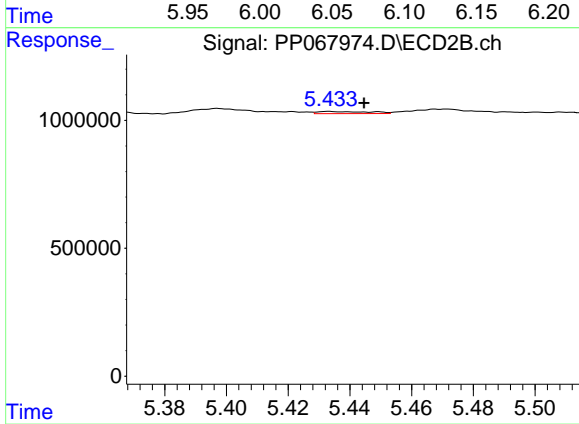
#13 AR-1232-3

R.T.: 5.354 min
 Delta R.T.: -0.007 min
 Response: 122170
 Conc: 10.23 ng/ml



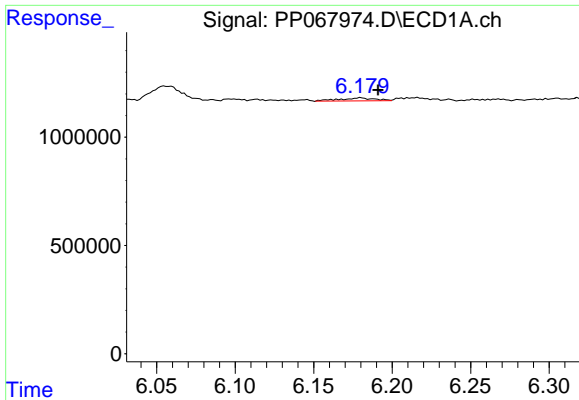
#14 AR-1232-4

R.T.: 6.055 min
 Delta R.T.: -0.046 min
 Response: 997451
 Conc: 88.37 ng/ml



#14 AR-1232-4

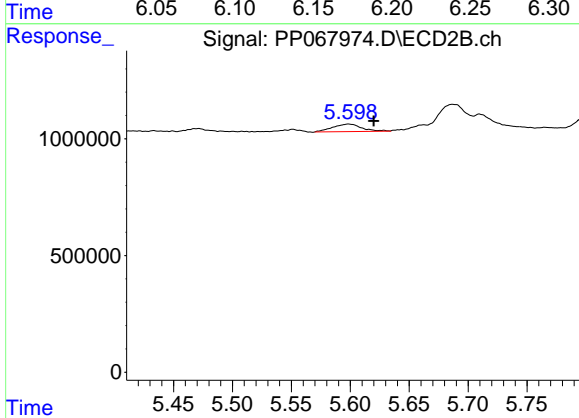
R.T.: 5.433 min
 Delta R.T.: -0.011 min
 Response: 95934
 Conc: 8.32 ng/ml



#15 AR-1232-5

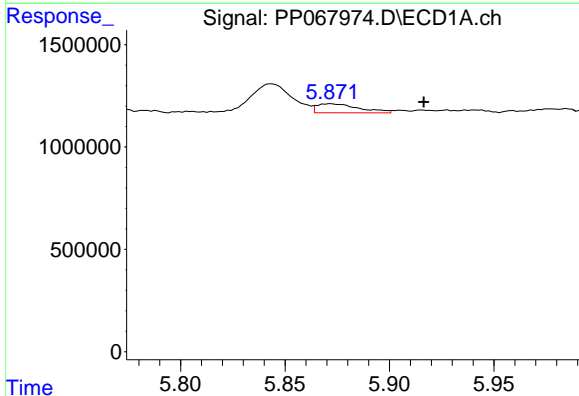
R.T.: 6.180 min
 Delta R.T.: -0.011 min
 Response: 212403
 Conc: 23.29 ng/ml

Instrument :
 ECD_P
 ClientSampleId :
 I.BLK



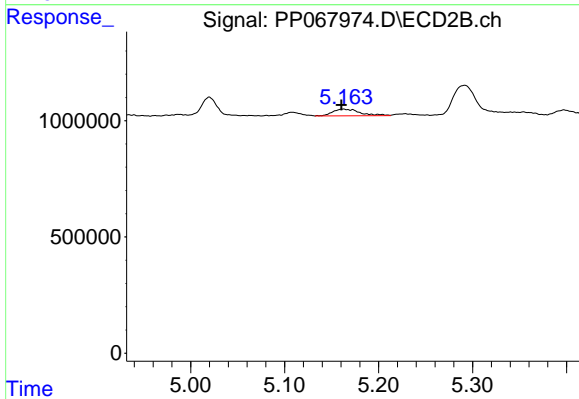
#15 AR-1232-5

R.T.: 5.599 min
 Delta R.T.: -0.021 min
 Response: 548160
 Conc: 40.75 ng/ml



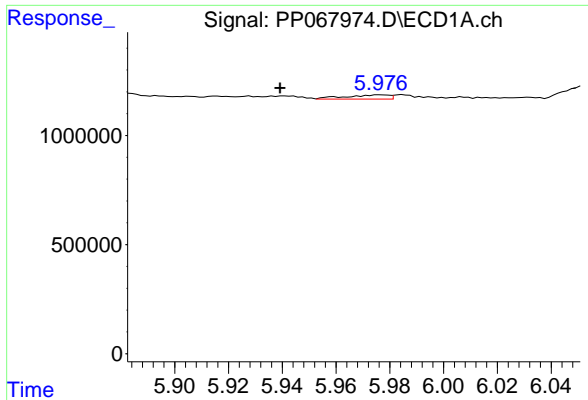
#16 AR-1242-1

R.T.: 5.872 min
 Delta R.T.: -0.044 min
 Response: 614544
 Conc: 22.00 ng/ml



#16 AR-1242-1

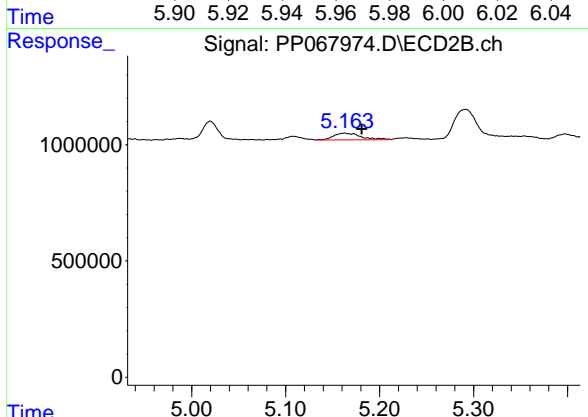
R.T.: 5.162 min
 Delta R.T.: 0.002 min
 Response: 591788
 Conc: 20.35 ng/ml



#17 AR-1242-2

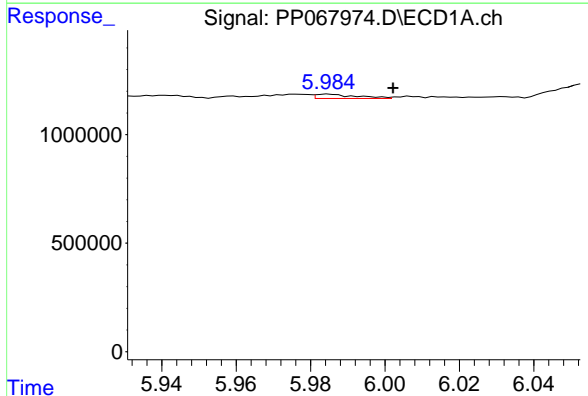
R.T.: 5.977 min
 Delta R.T.: 0.038 min
 Response: 214532
 Conc: 5.28 ng/ml

Instrument :
 ECD_P
 ClientSampleId :
 I.BLK



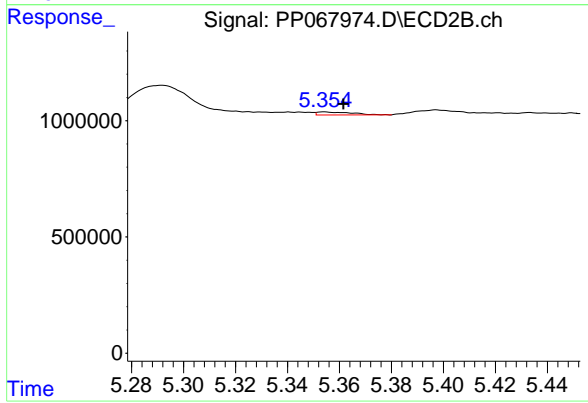
#17 AR-1242-2

R.T.: 5.162 min
 Delta R.T.: -0.019 min
 Response: 591788
 Conc: 14.74 ng/ml



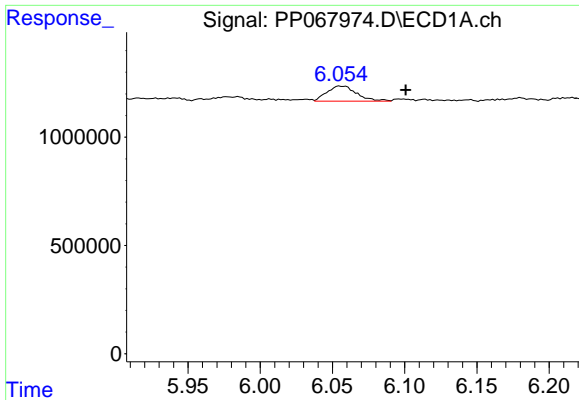
#18 AR-1242-3

R.T.: 5.985 min
 Delta R.T.: -0.017 min
 Response: 152322
 Conc: 5.65 ng/ml



#18 AR-1242-3

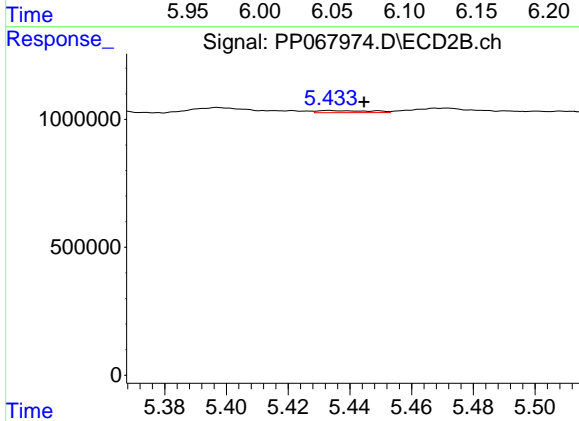
R.T.: 5.354 min
 Delta R.T.: -0.008 min
 Response: 122170
 Conc: 5.43 ng/ml



#19 AR-1242-4

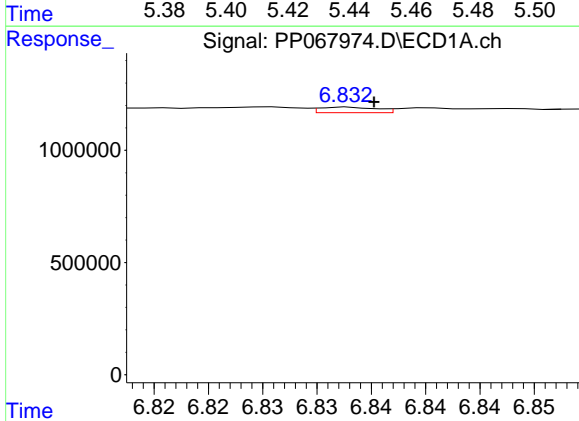
R.T.: 6.055 min
 Delta R.T.: -0.046 min
 Response: 997451
 Conc: 46.50 ng/ml

Instrument :
 ECD_P
 ClientSampleId :
 I.BLK



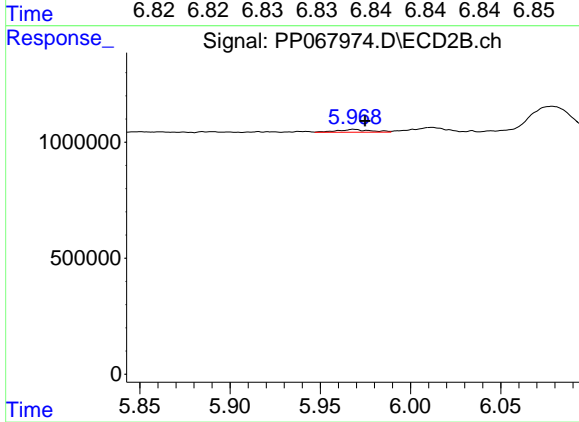
#19 AR-1242-4

R.T.: 5.433 min
 Delta R.T.: -0.011 min
 Response: 95934
 Conc: 4.04 ng/ml



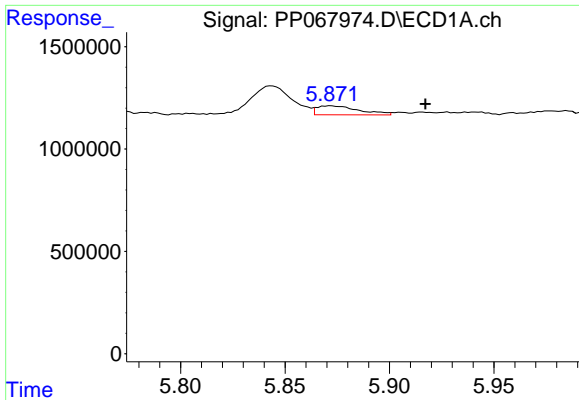
#20 AR-1242-5

R.T.: 6.833 min
 Delta R.T.: -0.002 min
 Response: 90139
 Conc: 3.74 ng/ml



#20 AR-1242-5

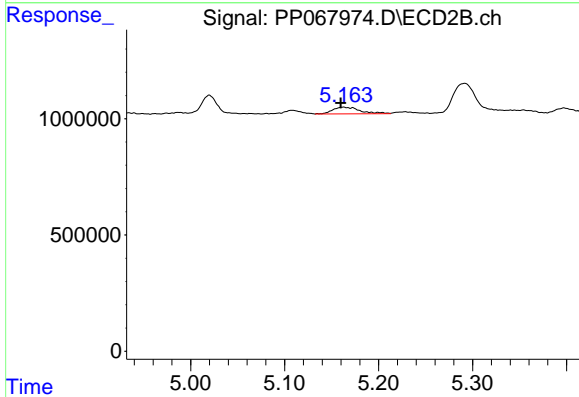
R.T.: 5.969 min
 Delta R.T.: -0.006 min
 Response: 157067
 Conc: 5.48 ng/ml



#21 AR-1248-1

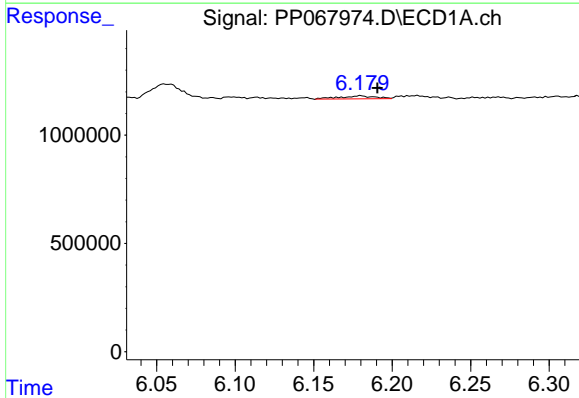
R.T.: 5.872 min
 Delta R.T.: -0.045 min
 Response: 614544
 Conc: 28.69 ng/ml

Instrument :
 ECD_P
 ClientSampleId :
 I.BLK



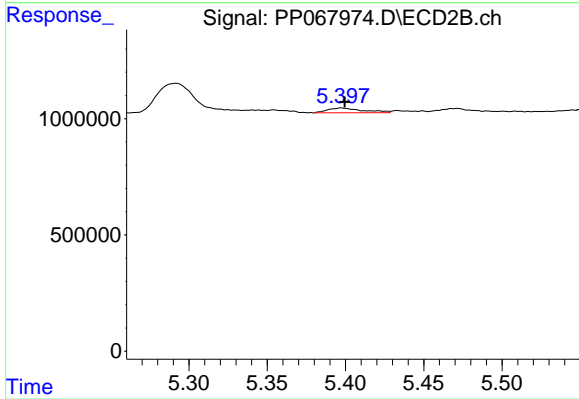
#21 AR-1248-1

R.T.: 5.162 min
 Delta R.T.: 0.003 min
 Response: 591788
 Conc: 26.11 ng/ml



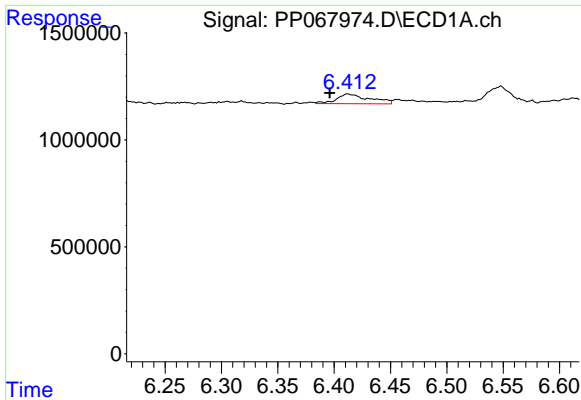
#22 AR-1248-2

R.T.: 6.180 min
 Delta R.T.: -0.011 min
 Response: 212403
 Conc: 6.32 ng/ml



#22 AR-1248-2

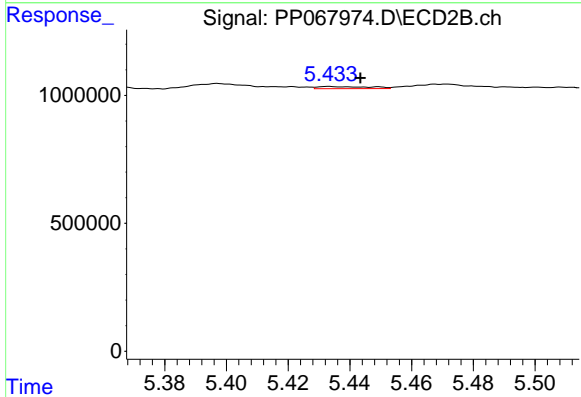
R.T.: 5.397 min
 Delta R.T.: -0.002 min
 Response: 319796
 Conc: 9.66 ng/ml



#23 AR-1248-3

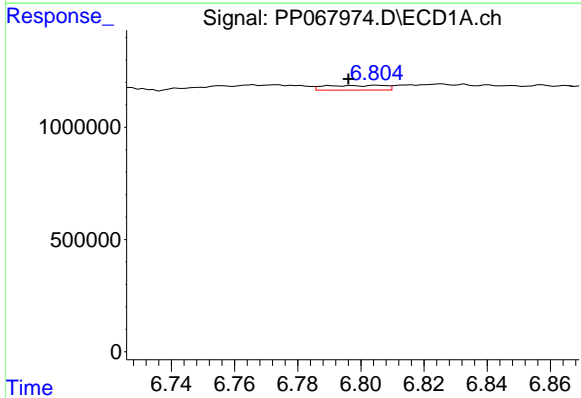
R.T.: 6.412 min
 Delta R.T.: 0.016 min
 Response: 910299
 Conc: 24.85 ng/ml

Instrument :
 ECD_P
 ClientSampleId :
 I.BLK



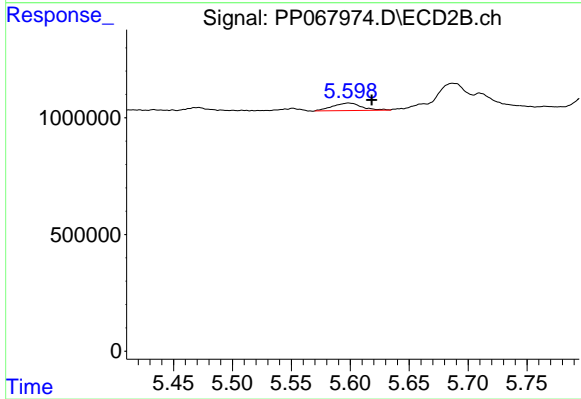
#23 AR-1248-3

R.T.: 5.433 min
 Delta R.T.: -0.010 min
 Response: 95934
 Conc: 2.78 ng/ml



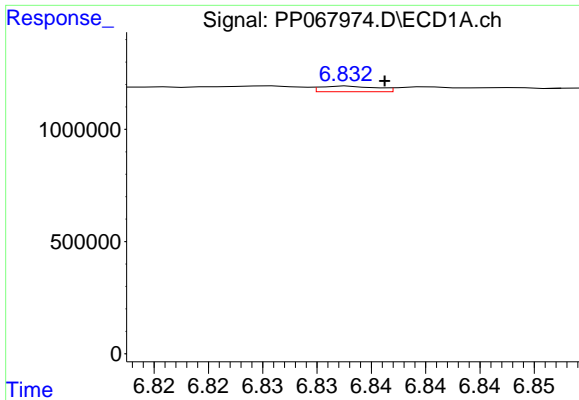
#24 AR-1248-4

R.T.: 6.806 min
 Delta R.T.: 0.010 min
 Response: 276426
 Conc: 6.83 ng/ml



#24 AR-1248-4

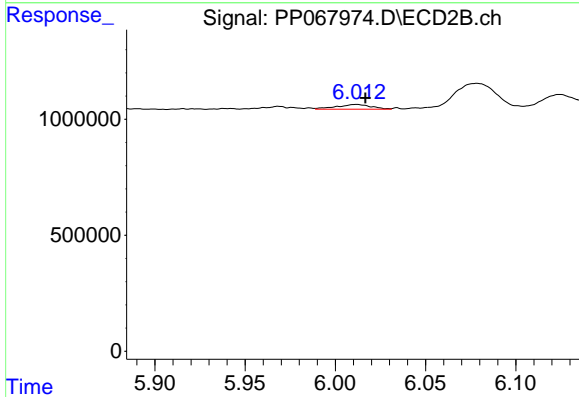
R.T.: 5.599 min
 Delta R.T.: -0.020 min
 Response: 548160
 Conc: 13.38 ng/ml



#25 AR-1248-5

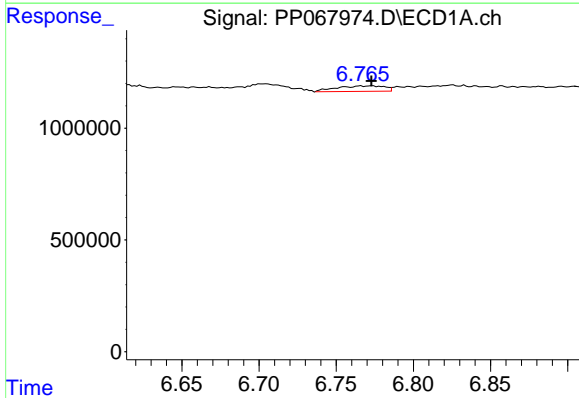
R.T.: 6.833 min
 Delta R.T.: -0.003 min
 Response: 90139
 Conc: 2.27 ng/ml

Instrument :
 ECD_P
 ClientSampleId :
 I.BLK



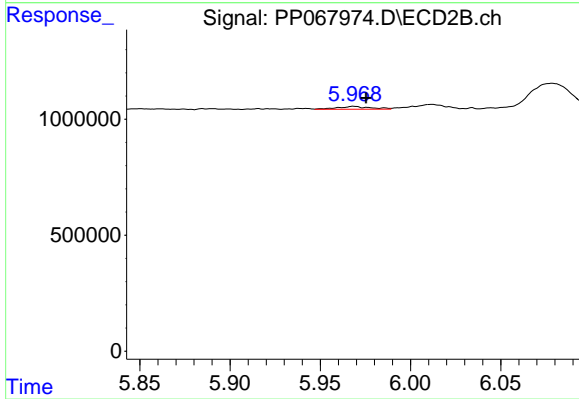
#25 AR-1248-5

R.T.: 6.012 min
 Delta R.T.: -0.005 min
 Response: 277076
 Conc: 7.40 ng/ml



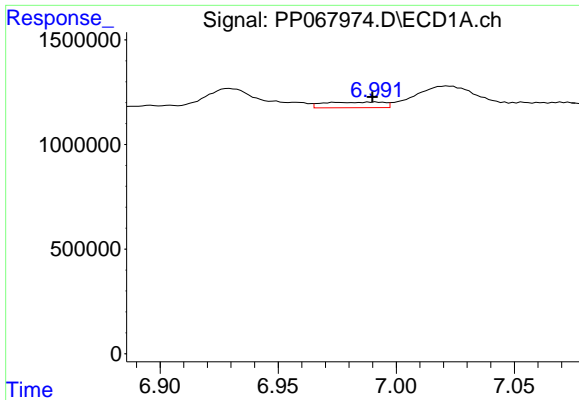
#26 AR-1254-1

R.T.: 6.766 min
 Delta R.T.: -0.007 min
 Response: 534905
 Conc: 11.94 ng/ml



#26 AR-1254-1

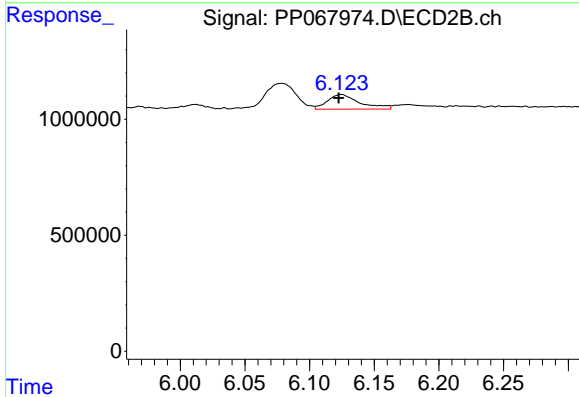
R.T.: 5.969 min
 Delta R.T.: -0.007 min
 Response: 157067
 Conc: 2.66 ng/ml



#27 AR-1254-2

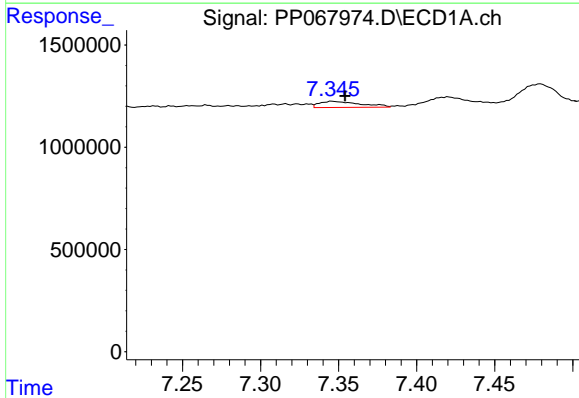
R.T.: 6.991 min
 Delta R.T.: 0.001 min
 Response: 479379
 Conc: 7.25 ng/ml

Instrument :
 ECD_P
 ClientSampleId :
 I.BLK



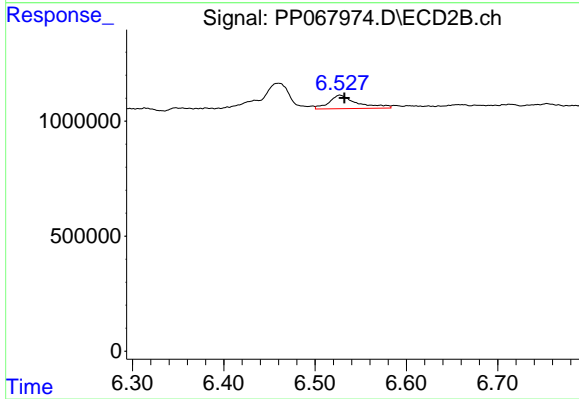
#27 AR-1254-2

R.T.: 6.124 min
 Delta R.T.: 0.002 min
 Response: 1103118
 Conc: 21.03 ng/ml



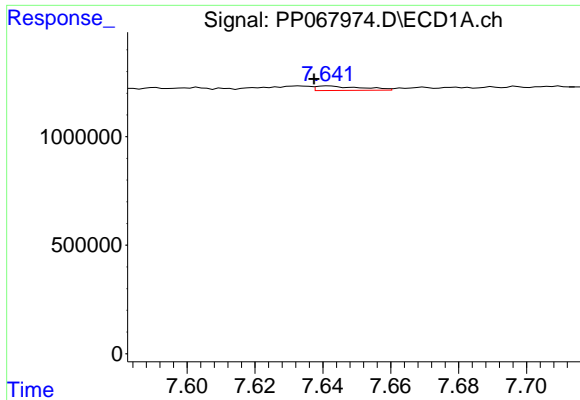
#28 AR-1254-3

R.T.: 7.346 min
 Delta R.T.: -0.008 min
 Response: 557005
 Conc: 8.02 ng/ml



#28 AR-1254-3

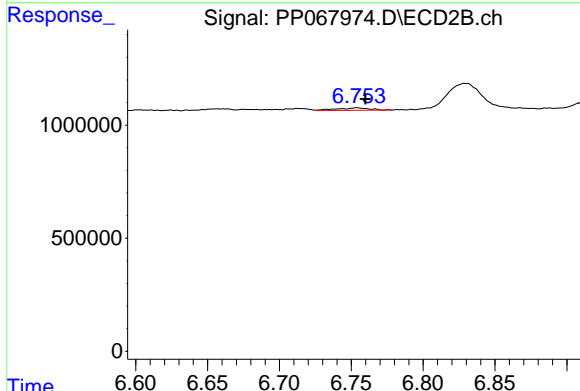
R.T.: 6.527 min
 Delta R.T.: -0.005 min
 Response: 1260314
 Conc: 15.15 ng/ml



#29 AR-1254-4

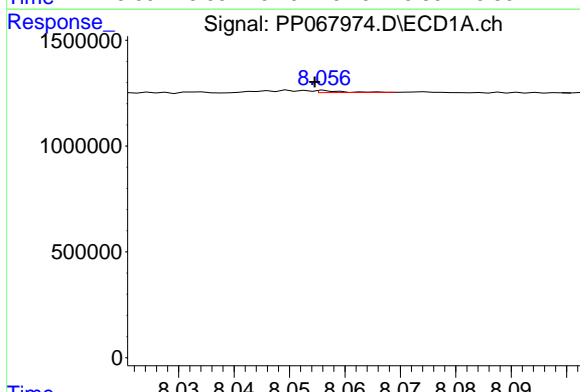
R.T.: 7.642 min
 Delta R.T.: 0.004 min
 Response: 192953
 Conc: 3.87 ng/ml

Instrument :
 ECD_P
 ClientSampleId :
 I.BLK



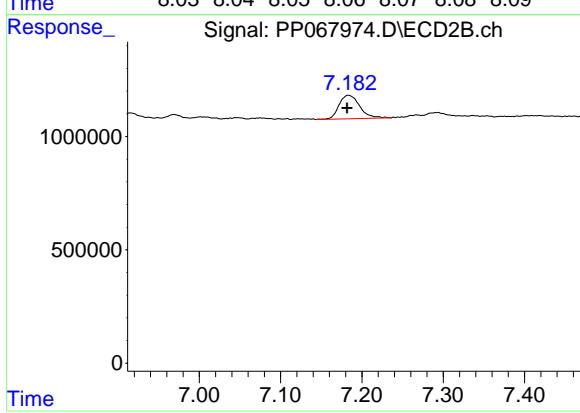
#29 AR-1254-4

R.T.: 6.754 min
 Delta R.T.: -0.006 min
 Response: 171722
 Conc: 3.56 ng/ml



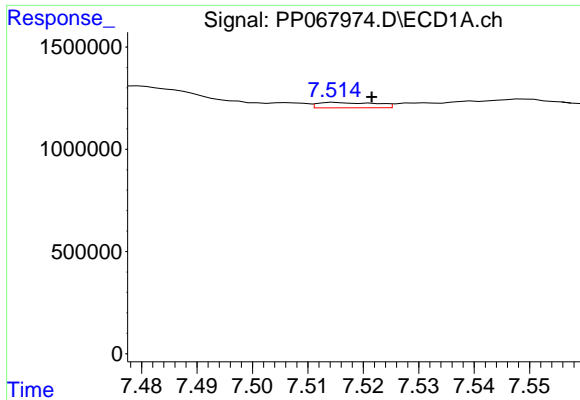
#30 AR-1254-5

R.T.: 8.056 min
 Delta R.T.: 0.002 min
 Response: 30718
 Conc: 0.52 ng/ml



#30 AR-1254-5

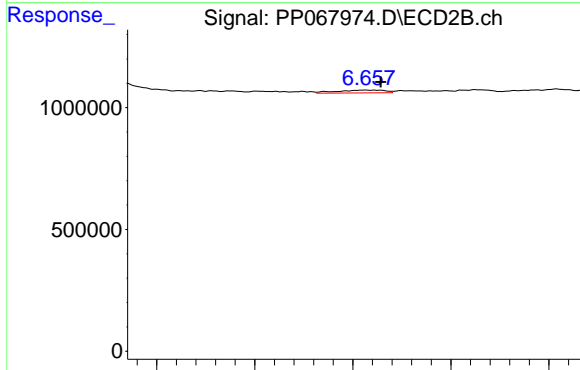
R.T.: 7.183 min
 Delta R.T.: 0.002 min
 Response: 1842091
 Conc: 25.05 ng/ml



#31 AR-1260-1

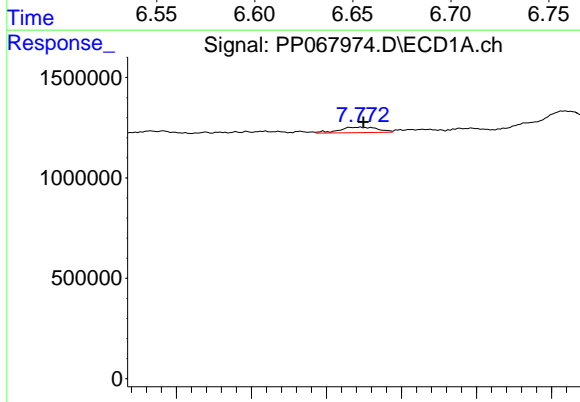
R.T.: 7.515 min
 Delta R.T.: -0.006 min
 Response: 190461
 Conc: 3.53 ng/ml

Instrument :
 ECD_P
 ClientSampleId :
 I.BLK



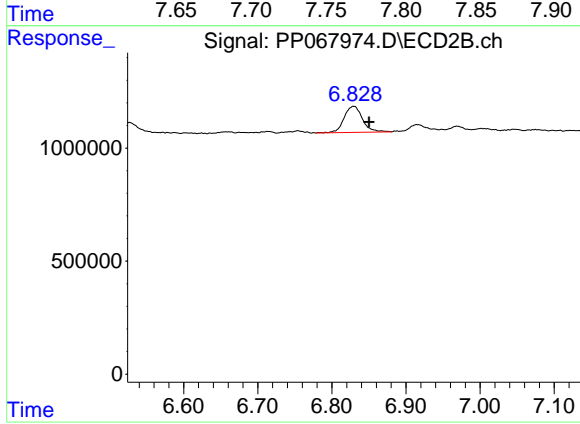
#31 AR-1260-1

R.T.: 6.657 min
 Delta R.T.: -0.008 min
 Response: 191093
 Conc: 3.35 ng/ml



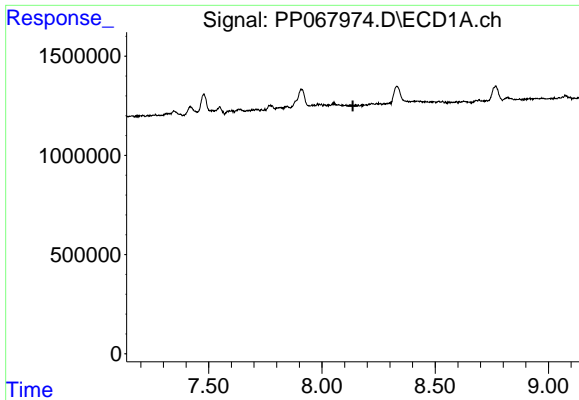
#32 AR-1260-2

R.T.: 7.773 min
 Delta R.T.: -0.002 min
 Response: 491782
 Conc: 7.77 ng/ml



#32 AR-1260-2

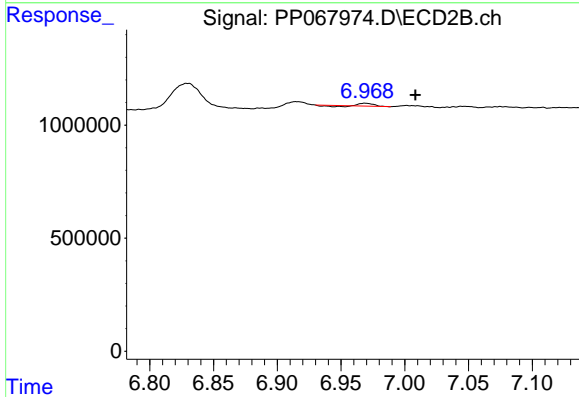
R.T.: 6.830 min
 Delta R.T.: -0.021 min
 Response: 1983718
 Conc: 29.74 ng/ml



#33 AR-1260-3

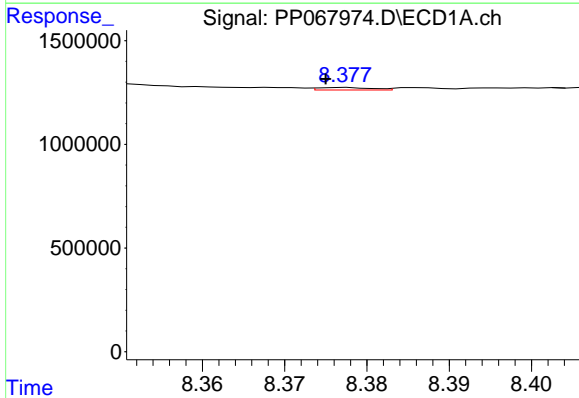
R.T.: 0.000 min
 Exp R.T.: 8.137 min
 Response: 0
 Conc: N.D.

Instrument :
 ECD_P
 ClientSampleId :
 I.BLK



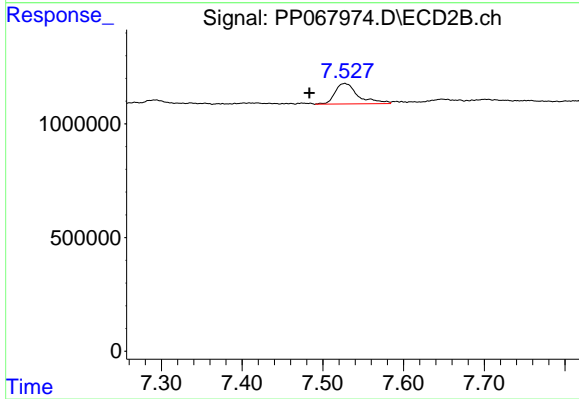
#33 AR-1260-3

R.T.: 6.969 min
 Delta R.T.: -0.039 min
 Response: 71542
 Conc: 1.12 ng/ml



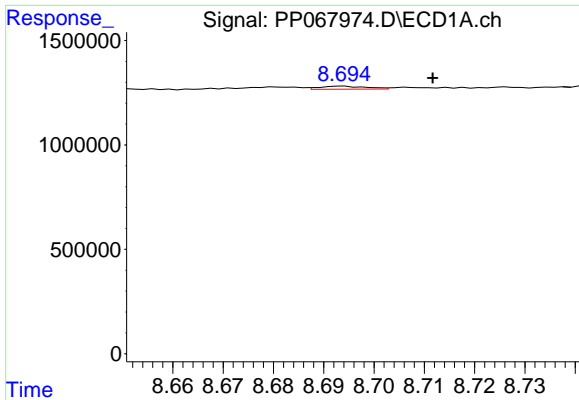
#34 AR-1260-4

R.T.: 8.377 min
 Delta R.T.: 0.002 min
 Response: 53824
 Conc: 0.89 ng/ml



#34 AR-1260-4

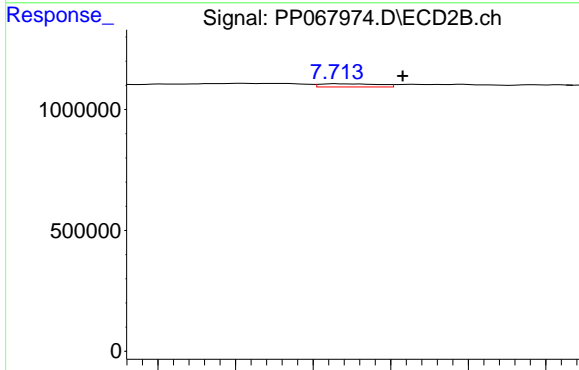
R.T.: 7.527 min
 Delta R.T.: 0.044 min
 Response: 1811197
 Conc: 32.76 ng/ml



#35 AR-1260-5

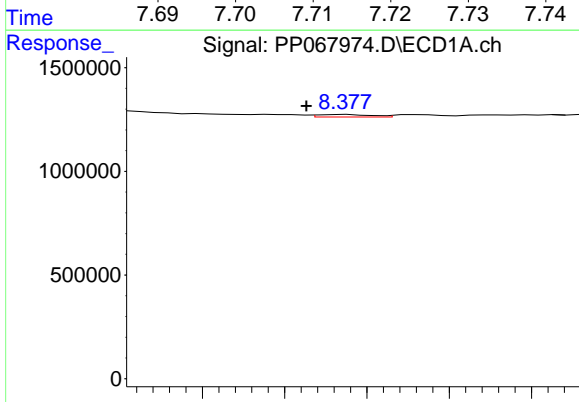
R.T.: 8.694 min
 Delta R.T.: -0.018 min
 Response: 92756
 Conc: 0.86 ng/ml

Instrument :
 ECD_P
 ClientSampleId :
 I.BLK



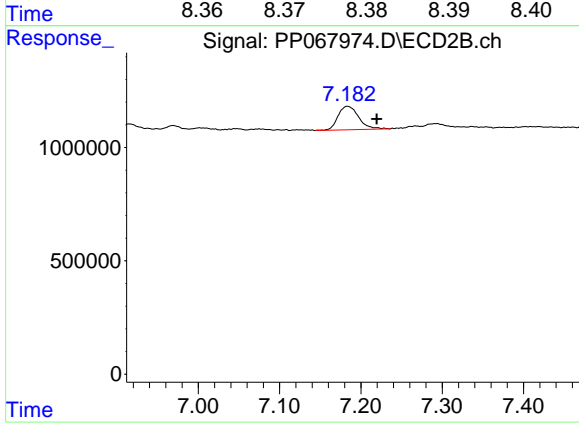
#35 AR-1260-5

R.T.: 7.714 min
 Delta R.T.: -0.008 min
 Response: 68830
 Conc: 0.56 ng/ml



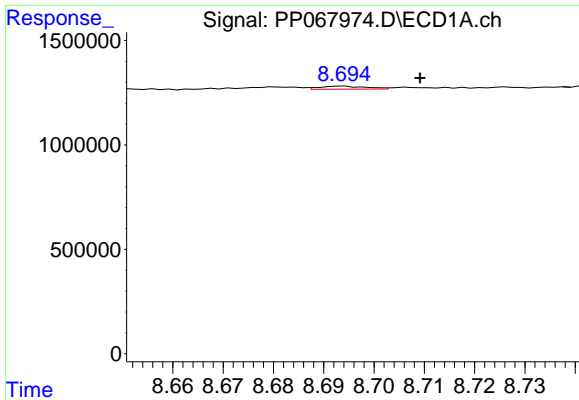
#36 AR-1262-1

R.T.: 8.377 min
 Delta R.T.: 0.005 min
 Response: 53824
 Conc: 0.75 ng/ml



#36 AR-1262-1

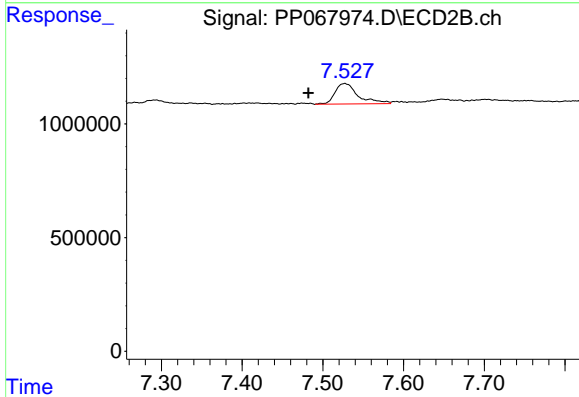
R.T.: 7.183 min
 Delta R.T.: -0.036 min
 Response: 1842091
 Conc: 23.41 ng/ml



#37 AR-1262-2

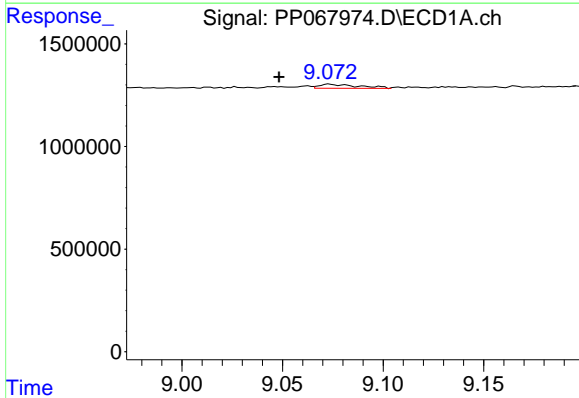
R.T.: 8.694 min
 Delta R.T.: -0.015 min
 Response: 92756
 Conc: 0.76 ng/ml

Instrument :
 ECD_P
 ClientSampleId :
 I.BLK



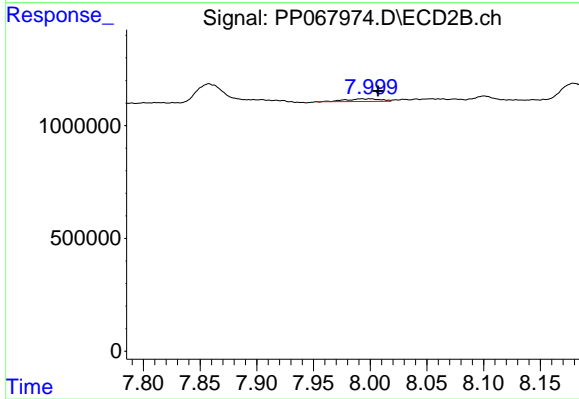
#37 AR-1262-2

R.T.: 7.527 min
 Delta R.T.: 0.045 min
 Response: 1811197
 Conc: 25.52 ng/ml



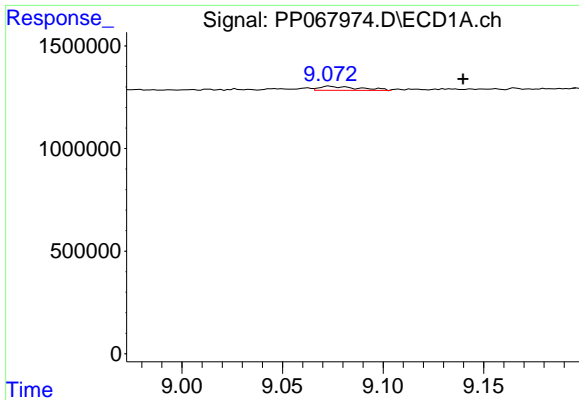
#38 AR-1262-3

R.T.: 9.073 min
 Delta R.T.: 0.025 min
 Response: 262010
 Conc: 2.96 ng/ml



#38 AR-1262-3

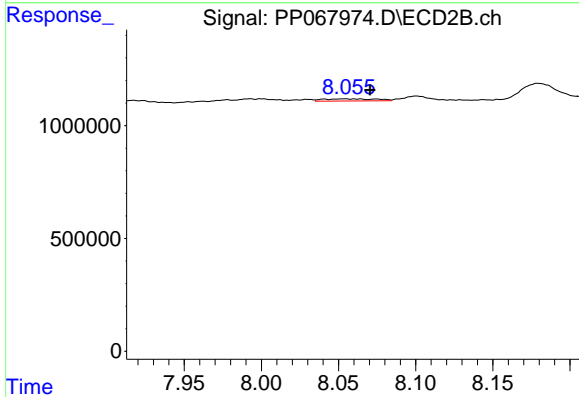
R.T.: 7.993 min
 Delta R.T.: -0.014 min
 Response: 254553
 Conc: 4.46 ng/ml



#39 AR-1262-4

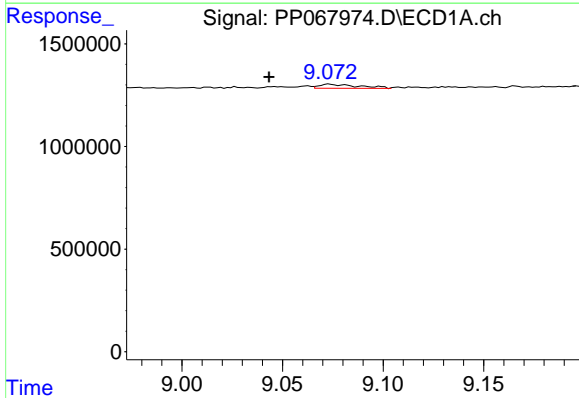
R.T.: 9.073 min
 Delta R.T.: -0.066 min
 Response: 262010
 Conc: 3.75 ng/ml

Instrument :
 ECD_P
 ClientSampleId :
 I.BLK



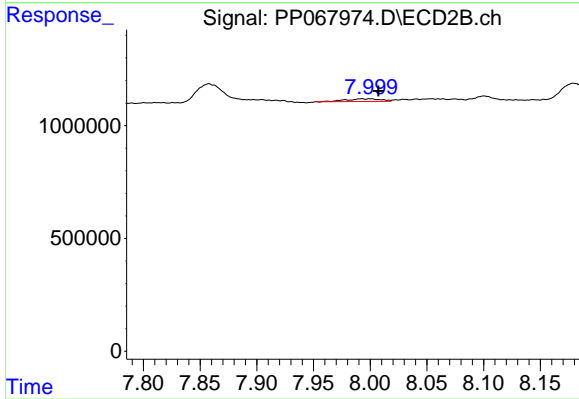
#39 AR-1262-4

R.T.: 8.054 min
 Delta R.T.: -0.016 min
 Response: 226357
 Conc: 2.25 ng/ml



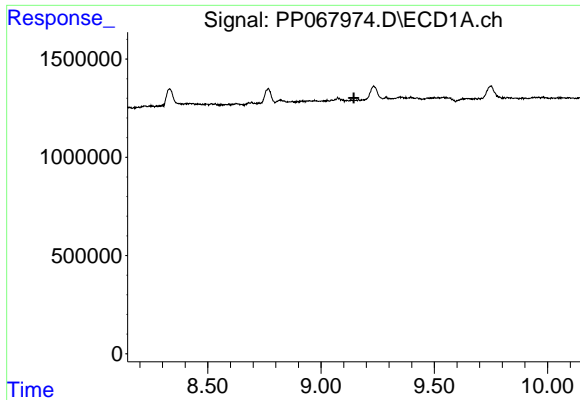
#41 AR-1268-1

R.T.: 9.073 min
 Delta R.T.: 0.030 min
 Response: 262010
 Conc: 1.72 ng/ml



#41 AR-1268-1

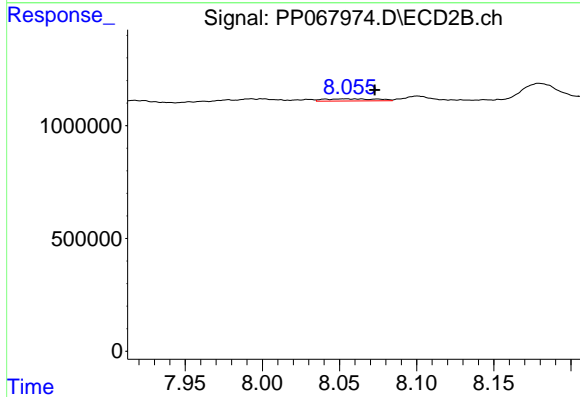
R.T.: 7.993 min
 Delta R.T.: -0.015 min
 Response: 254553
 Conc: 1.60 ng/ml



#42 AR-1268-2

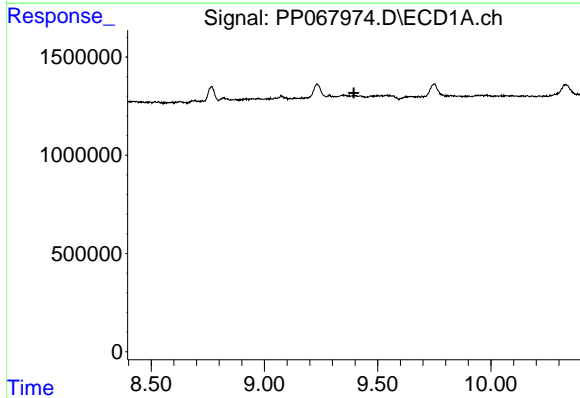
R.T.: 0.000 min
 Exp R.T.: 9.144 min
 Response: 0
 Conc: N.D.

Instrument :
 ECD_P
 ClientSampleId :
 I.BLK



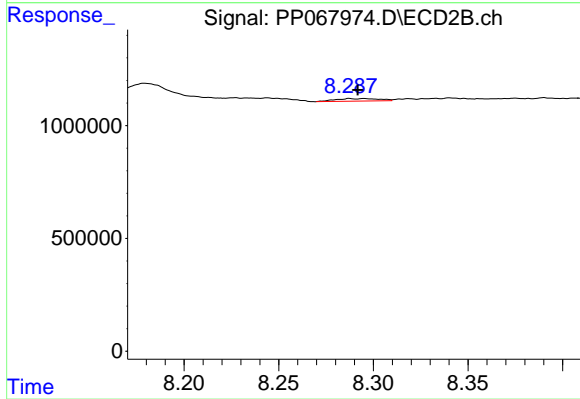
#42 AR-1268-2

R.T.: 8.054 min
 Delta R.T.: -0.019 min
 Response: 226357
 Conc: 1.58 ng/ml



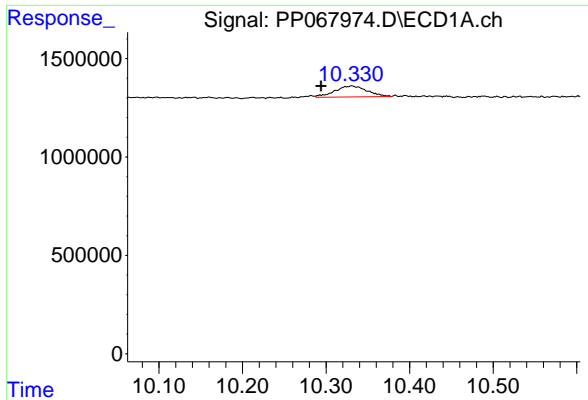
#43 AR-1268-3

R.T.: 0.000 min
 Exp R.T.: 9.395 min
 Response: 0
 Conc: N.D.



#43 AR-1268-3

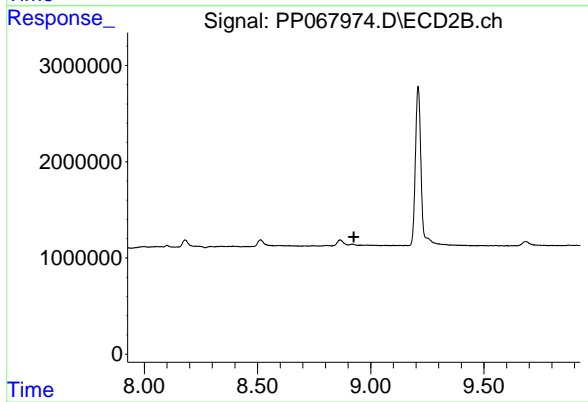
R.T.: 8.295 min
 Delta R.T.: 0.003 min
 Response: 184889
 Conc: 1.45 ng/ml



#45 AR-1268-5

R.T.: 10.331 min
Delta R.T.: 0.037 min
Response: 1476573
Conc: 3.95 ng/ml

Instrument :
ECD_P
ClientSampleId :
I.BLK



#45 AR-1268-5

R.T.: 8.918 min
Delta R.T.: -0.008 min
Response: -37029
Conc: N.D.