

Data Path : Z:\pestpcbsrv\HPCHEM1\ECD_P\Data\PP101722\
 Data File : PP052403.D
 Signal(s) : Signal #1: ECD1A.ch Signal #2: ECD2B.ch
 Acq On : 17 Oct 2022 23:33
 Operator : YP\AJ
 Sample : AR1660CCC500
 Misc :
 ALS Vial : 3 Sample Multiplier: 1

Instrument :
 ECD_P
ClientSampleId :
 AR1660CCC500

Manual Integrations
APPROVED

Reviewed By :Yogesh Patel 10/18/2022
 Supervised By :Ankita Jodhani 10/19/2022

Integration File signal 1: autoint1.e
 Integration File signal 2: autoint2.e
 Quant Time: Oct 18 03:28:52 2022
 Quant Method : Z:\pestpcbsrv\HPCHEM1\ECD_P\methods\PP101122.M
 Quant Title : GC EXTRACTABLES
 QLast Update : Wed Oct 12 05:20:17 2022
 Response via : Initial Calibration
 Integrator: ChemStation

Volume Inj. : 2 µl
 Signal #1 Phase : ZB-MR1 Signal #2 Phase: ZB-MR2
 Signal #1 Info : 30Mx0.32mmx 0.50µ Signal #2 Info : 30M x 0.32mm x 0.25µm

Compound	RT#1	RT#2	Resp#1	Resp#2	ng/ml	ng/ml

System Monitoring Compounds						
1) SA Tetrachlo...	4.422	3.672	85130138	64327558	54.159	56.149m
2) SA Decachlor...	10.243	8.768	69717131	56396265	50.234	50.473
Target Compounds						
3) L1 AR-1016-1	5.596	4.776	23949107	23761122	526.651	534.246
4) L1 AR-1016-2	5.619	4.795	34095459	35075666	517.916	551.225
5) L1 AR-1016-3	5.682	4.974	21975710	18566287	528.070	558.548
6) L1 AR-1016-4	5.781	5.016	17624207	15397853	485.052	564.950
7) L1 AR-1016-5	6.078	5.234	22882099	20093659	536.108	567.952
31) L7 AR-1260-1	7.210	6.282	44094394	35397618	531.990	513.883
32) L7 AR-1260-2	7.468	6.472	47588696	41489958	504.198	501.291
33) L7 AR-1260-3	7.829	6.628	31276528	38824037	520.764	502.852
34) L7 AR-1260-4	8.055	7.105	36579427	27713341	476.954	492.992
35) L7 AR-1260-5	8.380	7.348	64175366	63216240	468.167	479.357

(f)=RT Delta > 1/2 Window (#)=Amounts differ by > 25% (m)=manual int.

Data Path : Z:\pestpcbsrv\HPCHEM1\ECD_P\Data\PP101722\
 Data File : PP052403.D
 Signal(s) : Signal #1: ECD1A.ch Signal #2: ECD2B.ch
 Acq On : 17 Oct 2022 23:33
 Operator : YP\AJ
 Sample : AR1660CCC500
 Misc :
 ALS Vial : 3 Sample Multiplier: 1

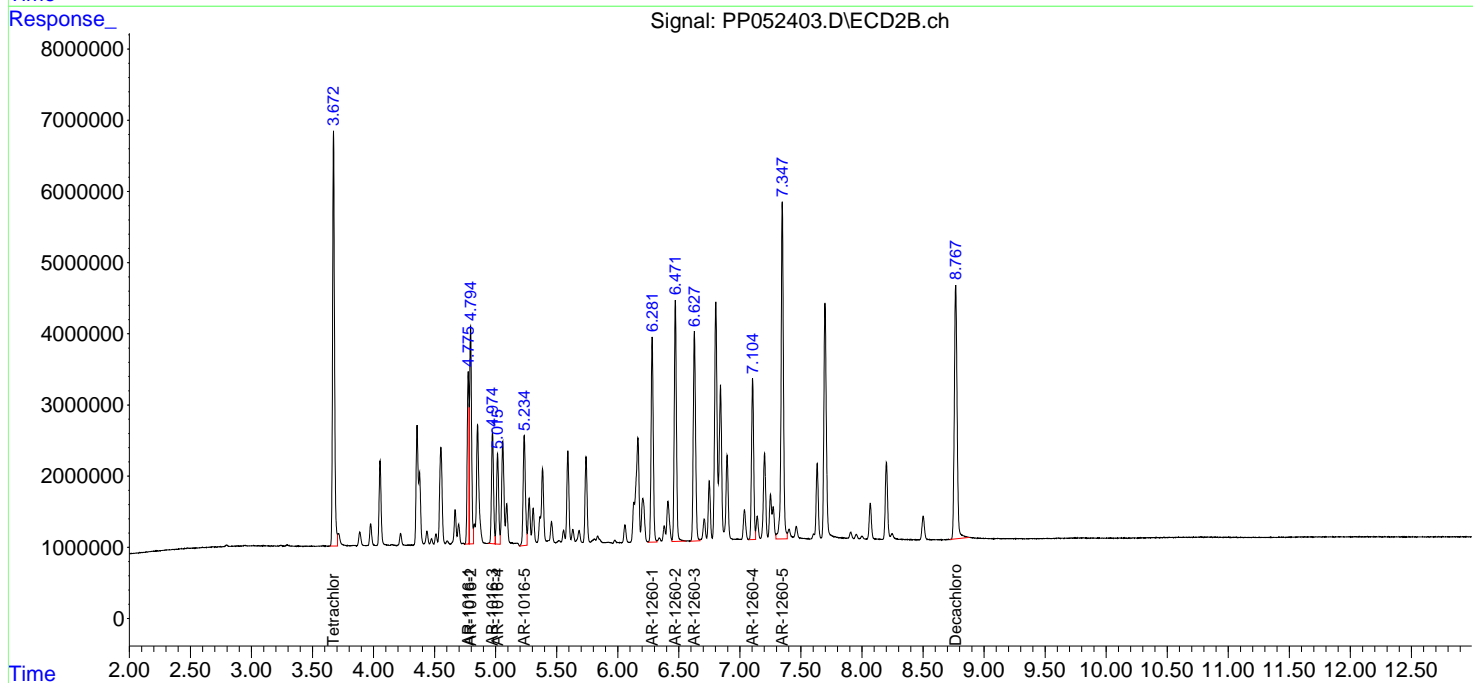
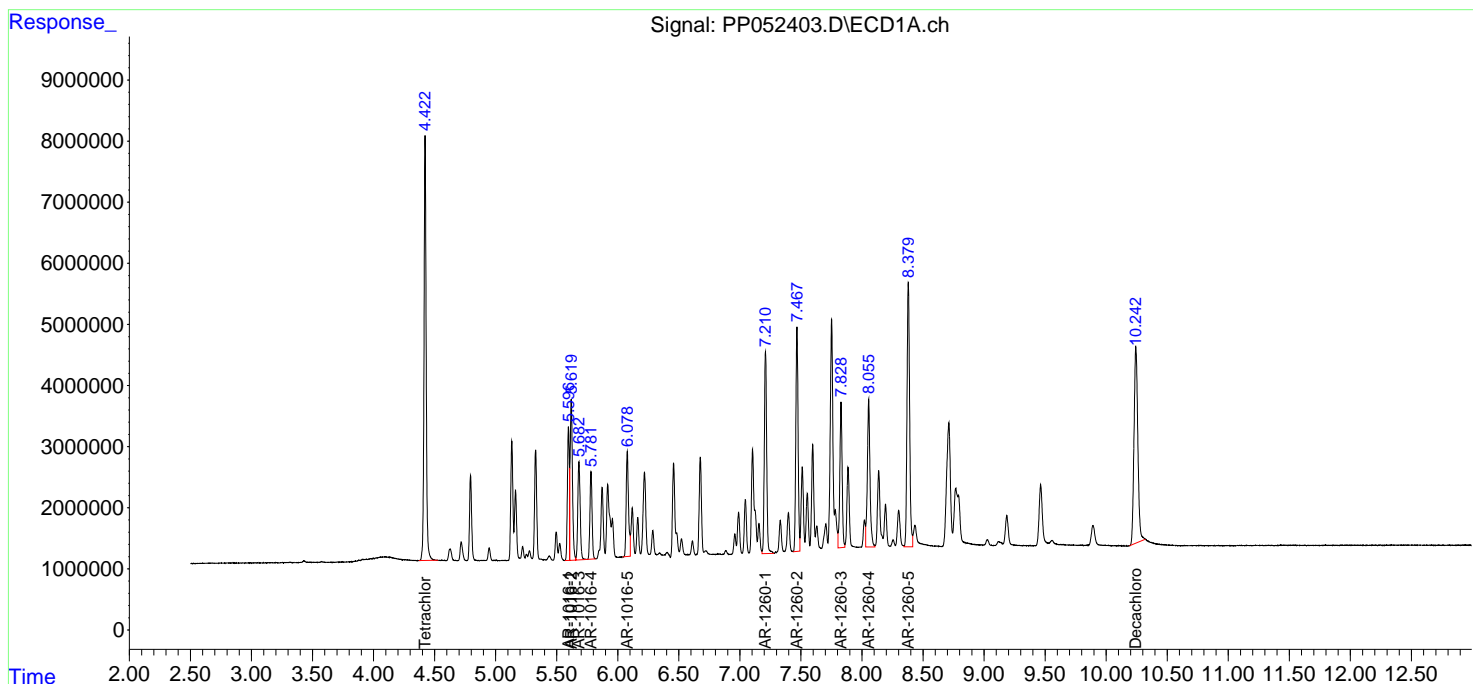
Instrument :
 ECD_P
 ClientSampleId :
 AR1660CCC500

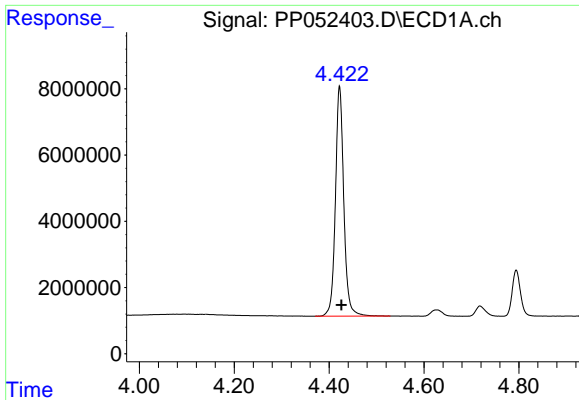
Manual Integrations
 APPROVED

Reviewed By :Yogesh Patel 10/18/2022
 Supervised By :Ankita Jodhani 10/19/2022

Integration File signal 1: autoint1.e
 Integration File signal 2: autoint2.e
 Quant Time: Oct 18 03:28:52 2022
 Quant Method : Z:\pestpcbsrv\HPCHEM1\ECD_P\methods\PP101122.M
 Quant Title : GC EXTRACTABLES
 QLast Update : Wed Oct 12 05:20:17 2022
 Response via : Initial Calibration
 Integrator: ChemStation

Volume Inj. : 2 µl
 Signal #1 Phase : ZB-MR1 Signal #2 Phase: ZB-MR2
 Signal #1 Info : 30Mx0.32mmx 0.50µ Signal #2 Info : 30M x 0.32mm x 0.25µm

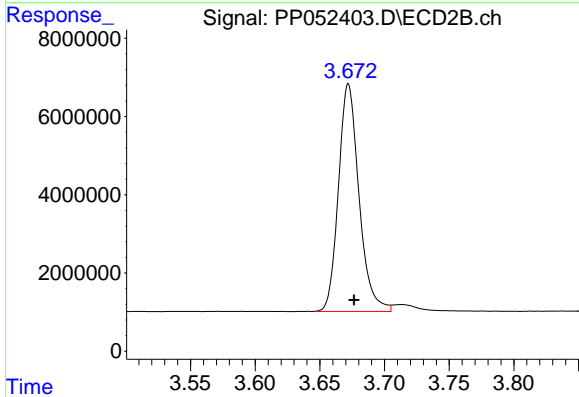




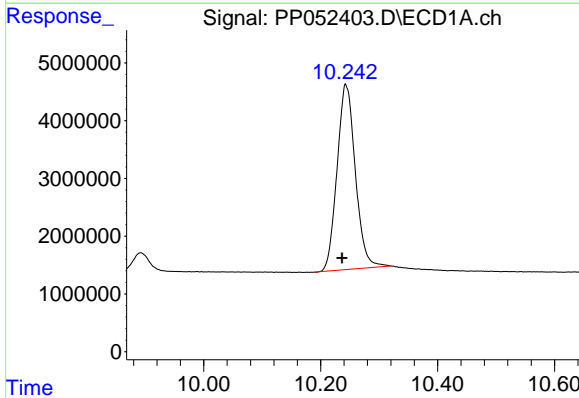
#1 Tetrachloro-m-xylene
 R.T.: 4.422 min
 Delta R.T.: -0.004 min
 Response: 85130138
 Conc: 54.16 ng/ml

Instrument : ECD_P
 Client Sample Id : AR1660CCC500

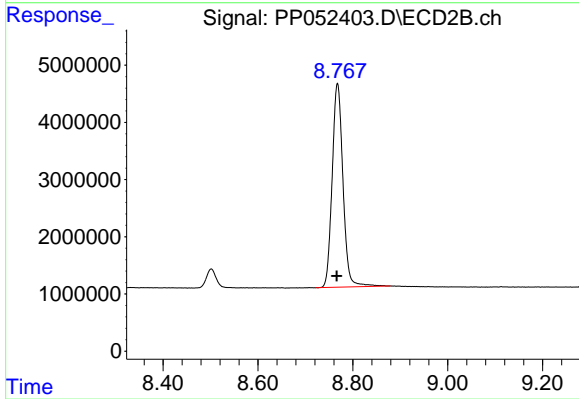
Manual Integrations
APPROVED
 Reviewed By :Yogesh Patel 10/18/2022
 Supervised By :Ankita Jodhani 10/19/2022



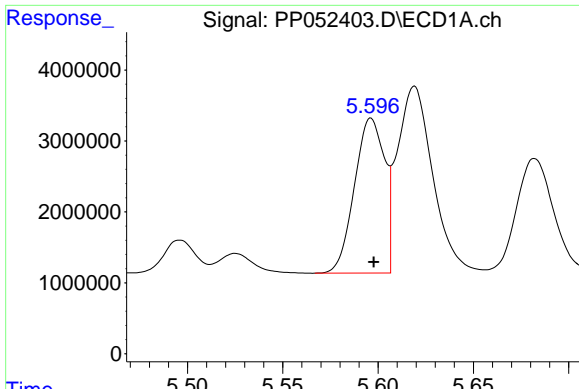
#1 Tetrachloro-m-xylene
 R.T.: 3.672 min
 Delta R.T.: -0.005 min
 Response: 64327558
 Conc: 56.15 ng/ml m



#2 Decachlorobiphenyl
 R.T.: 10.243 min
 Delta R.T.: 0.006 min
 Response: 69717131
 Conc: 50.23 ng/ml



#2 Decachlorobiphenyl
 R.T.: 8.768 min
 Delta R.T.: 0.002 min
 Response: 56396265
 Conc: 50.47 ng/ml



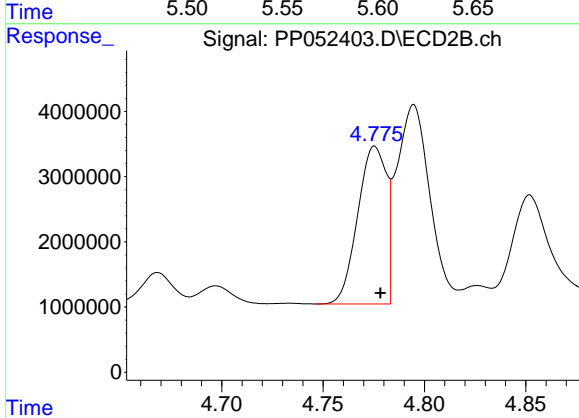
#3 AR-1016-1

R.T.: 5.596 min
 Delta R.T.: -0.001 min
 Response: 23949107
 Conc: 526.65 ng/ml

Instrument :
 ECD_P
 ClientSampleId :
 AR1660CCC500

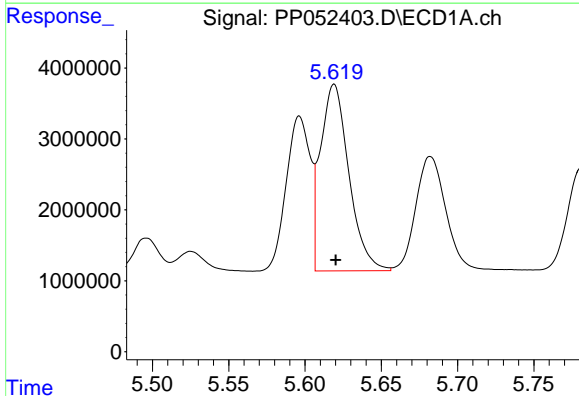
Manual Integrations
 APPROVED

Reviewed By :Yogesh Patel 10/18/2022
 Supervised By :Ankita Jodhani 10/19/2022



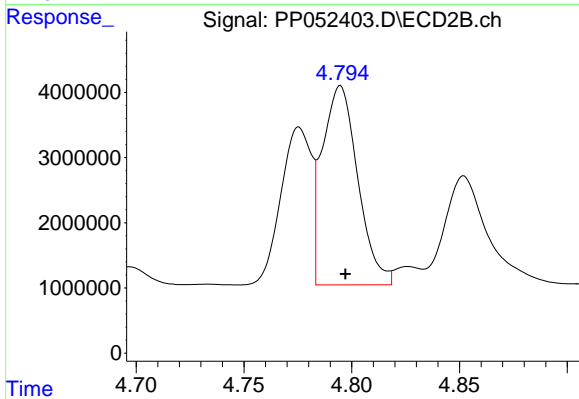
#3 AR-1016-1

R.T.: 4.776 min
 Delta R.T.: -0.002 min
 Response: 23761122
 Conc: 534.25 ng/ml



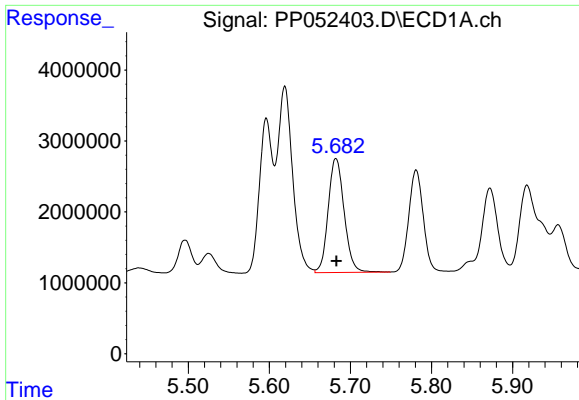
#4 AR-1016-2

R.T.: 5.619 min
 Delta R.T.: 0.000 min
 Response: 34095459
 Conc: 517.92 ng/ml



#4 AR-1016-2

R.T.: 4.795 min
 Delta R.T.: -0.003 min
 Response: 35075666
 Conc: 551.23 ng/ml



#5 AR-1016-3

R.T.: 5.682 min
 Delta R.T.: 0.000 min
 Response: 21975710
 Conc: 528.07 ng/ml

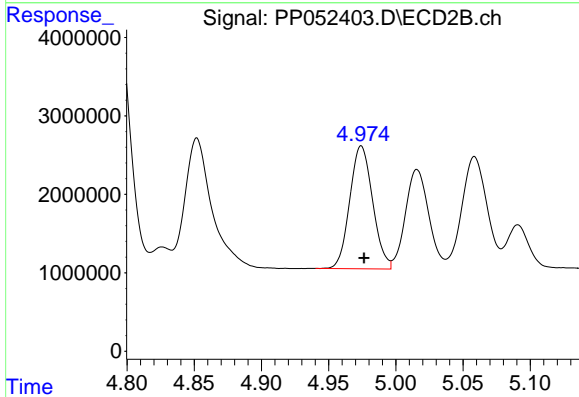
Instrument :

ECD_P

ClientSampleId :
 AR1660CCC500

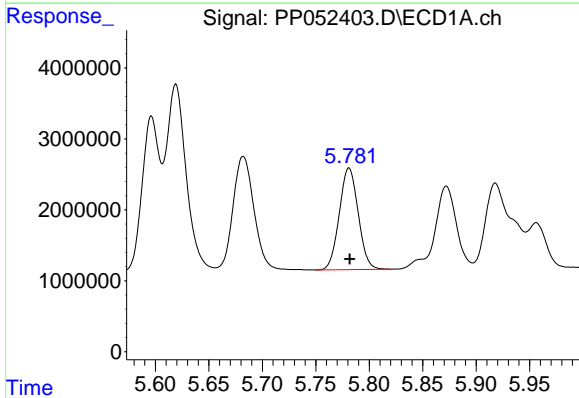
Manual Integrations
 APPROVED

Reviewed By :Yogesh Patel 10/18/2022
 Supervised By :Ankita Jodhani 10/19/2022



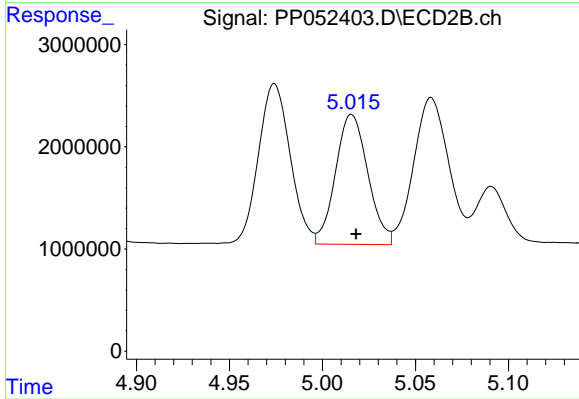
#5 AR-1016-3

R.T.: 4.974 min
 Delta R.T.: -0.002 min
 Response: 18566287
 Conc: 558.55 ng/ml



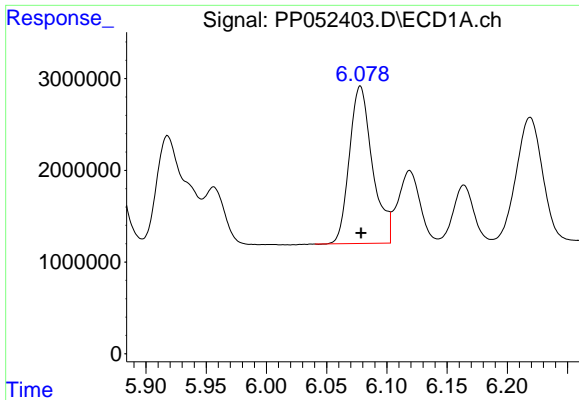
#6 AR-1016-4

R.T.: 5.781 min
 Delta R.T.: 0.000 min
 Response: 17624207
 Conc: 485.05 ng/ml



#6 AR-1016-4

R.T.: 5.016 min
 Delta R.T.: -0.002 min
 Response: 15397853
 Conc: 564.95 ng/ml



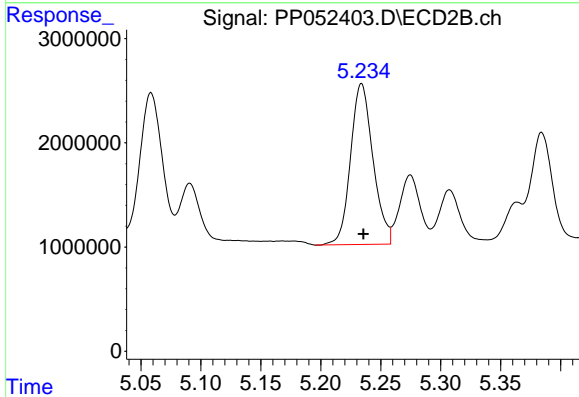
#7 AR-1016-5

R.T.: 6.078 min
 Delta R.T.: 0.000 min
 Response: 22882099
 Conc: 536.11 ng/ml

Instrument :
 ECD_P
 ClientSampleId :
 AR1660CCC500

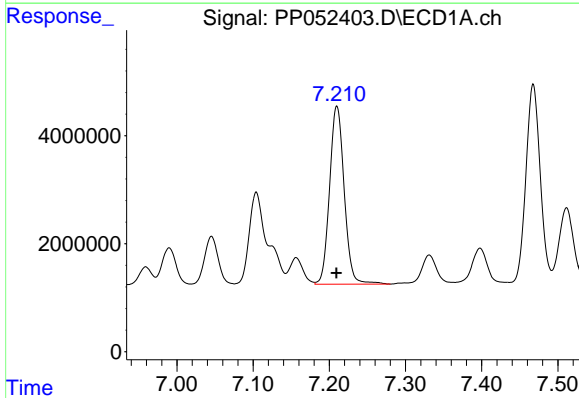
Manual Integrations
 APPROVED

Reviewed By :Yogesh Patel 10/18/2022
 Supervised By :Ankita Jodhani 10/19/2022



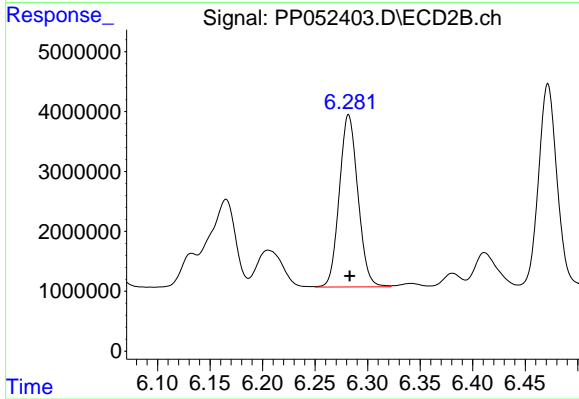
#7 AR-1016-5

R.T.: 5.234 min
 Delta R.T.: -0.002 min
 Response: 20093659
 Conc: 567.95 ng/ml



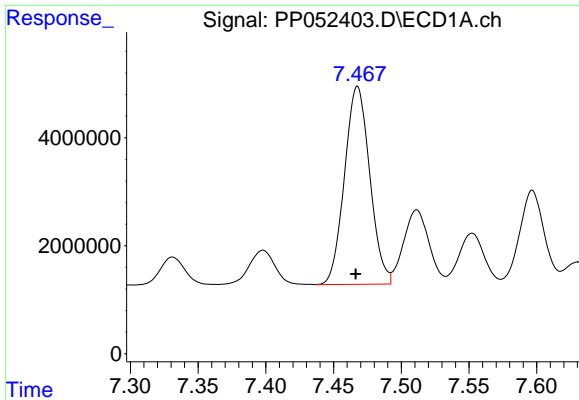
#31 AR-1260-1

R.T.: 7.210 min
 Delta R.T.: 0.000 min
 Response: 44094394
 Conc: 531.99 ng/ml



#31 AR-1260-1

R.T.: 6.282 min
 Delta R.T.: -0.001 min
 Response: 35397618
 Conc: 513.88 ng/ml



#32 AR-1260-2

R.T.: 7.468 min
 Delta R.T.: 0.001 min
 Response: 47588696
 Conc: 504.20 ng/ml

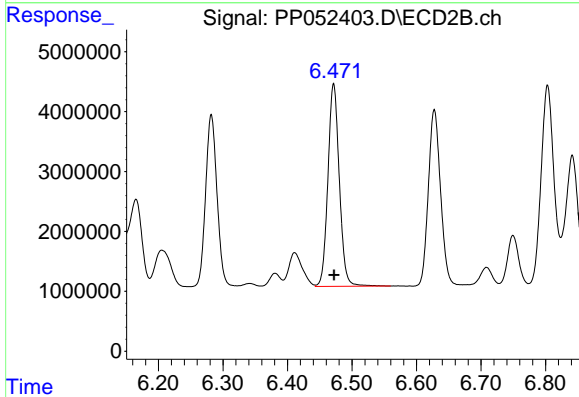
Instrument :

ECD_P

Client Sample Id :
 AR1660CCC500

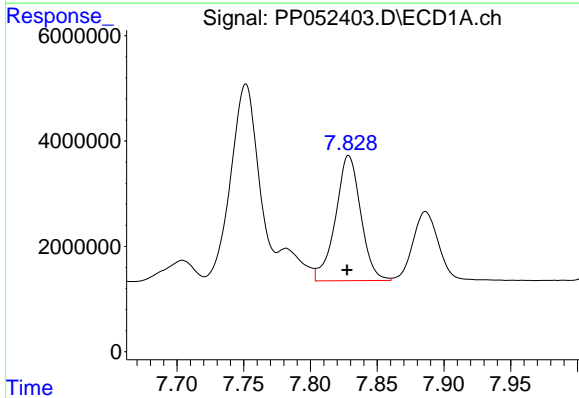
Manual Integrations
 APPROVED

Reviewed By :Yogesh Patel 10/18/2022
 Supervised By :Ankita Jodhani 10/19/2022



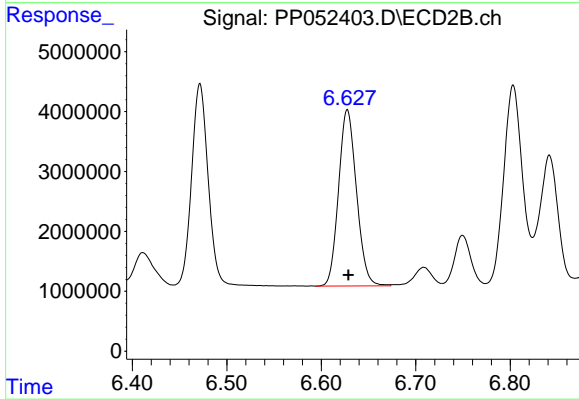
#32 AR-1260-2

R.T.: 6.472 min
 Delta R.T.: 0.000 min
 Response: 41489958
 Conc: 501.29 ng/ml



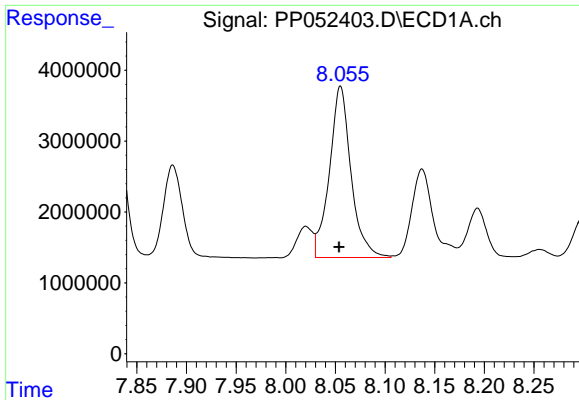
#33 AR-1260-3

R.T.: 7.829 min
 Delta R.T.: 0.001 min
 Response: 31276528
 Conc: 520.76 ng/ml



#33 AR-1260-3

R.T.: 6.628 min
 Delta R.T.: 0.000 min
 Response: 38824037
 Conc: 502.85 ng/ml



#34 AR-1260-4

R.T.: 8.055 min
 Delta R.T.: 0.001 min
 Response: 36579427
 Conc: 476.95 ng/ml

Instrument :

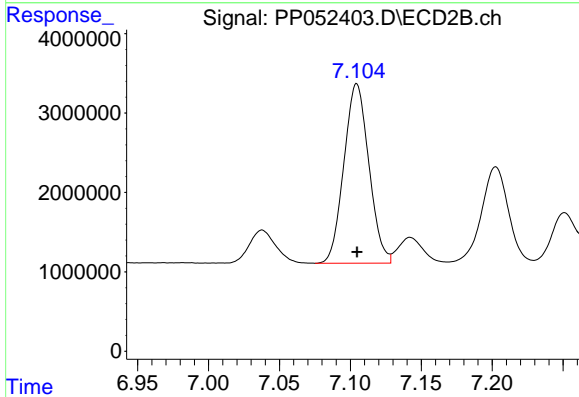
ECD_P

Client Sample Id :

AR1660CCC500

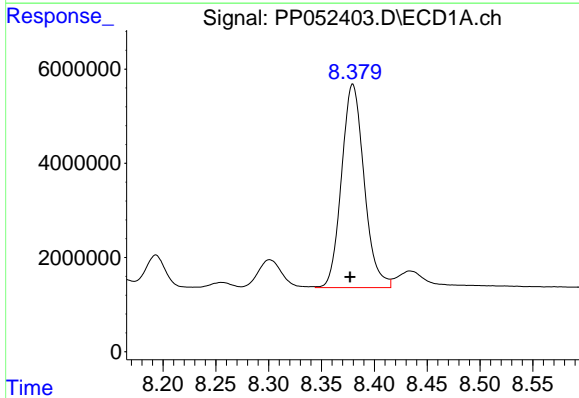
Manual Integrations
 APPROVED

Reviewed By :Yogesh Patel 10/18/2022
 Supervised By :Ankita Jodhani 10/19/2022



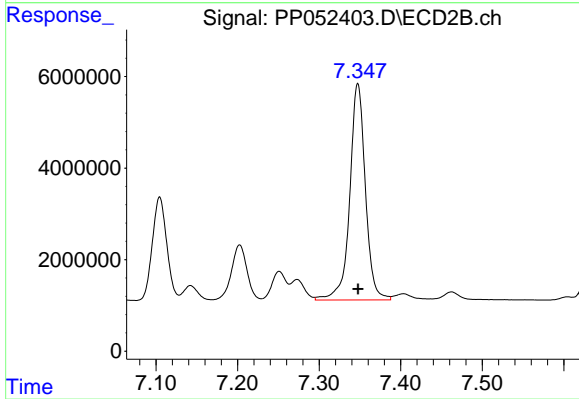
#34 AR-1260-4

R.T.: 7.105 min
 Delta R.T.: 0.000 min
 Response: 27713341
 Conc: 492.99 ng/ml



#35 AR-1260-5

R.T.: 8.380 min
 Delta R.T.: 0.002 min
 Response: 64175366
 Conc: 468.17 ng/ml



#35 AR-1260-5

R.T.: 7.348 min
 Delta R.T.: 0.000 min
 Response: 63216240
 Conc: 479.36 ng/ml