

Data Path : Z:\pestpcbsrv\HPCHEM1\ECD_P\Data\PP101722\
 Data File : PP052405.D
 Signal(s) : Signal #1: ECD1A.ch Signal #2: ECD2B.ch
 Acq On : 18 Oct 2022 00:06
 Operator : YP\AJ
 Sample : AR1248CCC500
 Misc :
 ALS Vial : 5 Sample Multiplier: 1

Instrument :
 ECD_P
ClientSampleId :
 AR1248CCC500

Integration File signal 1: autoint1.e
 Integration File signal 2: autoint2.e
 Quant Time: Oct 18 03:42:10 2022
 Quant Method : Z:\pestpcbsrv\HPCHEM1\ECD_P\methods\PP101122.M
 Quant Title : GC EXTRACTABLES
 QLast Update : Wed Oct 12 05:20:17 2022
 Response via : Initial Calibration
 Integrator: ChemStation

Volume Inj. : 2 µl
 Signal #1 Phase : ZB-MR1 Signal #2 Phase: ZB-MR2
 Signal #1 Info : 30Mx0.32mmx 0.50µ Signal #2 Info : 30M x 0.32mm x 0.25µm

Compound	RT#1	RT#2	Resp#1	Resp#2	ng/ml	ng/ml

System Monitoring Compounds						
1) SA Tetrachlo...	4.422	3.672	79643424	62343295	50.668	54.417
2) SA Decachlor...	10.245	8.767	66159874	53395608	47.671	47.787
Target Compounds						
21) L5 AR-1248-1	5.596	4.776	13217751	13460095	491.683	496.473
22) L5 AR-1248-2	5.872	5.015	19138312	18202327	411.733	489.251
23) L5 AR-1248-3	6.078	5.058	26517448	18634322	478.897	489.136
24) L5 AR-1248-4	6.483	5.233	30153550	22796991	474.912	492.003
25) L5 AR-1248-5	6.522	5.632	29753153	19926854	480.394	473.847

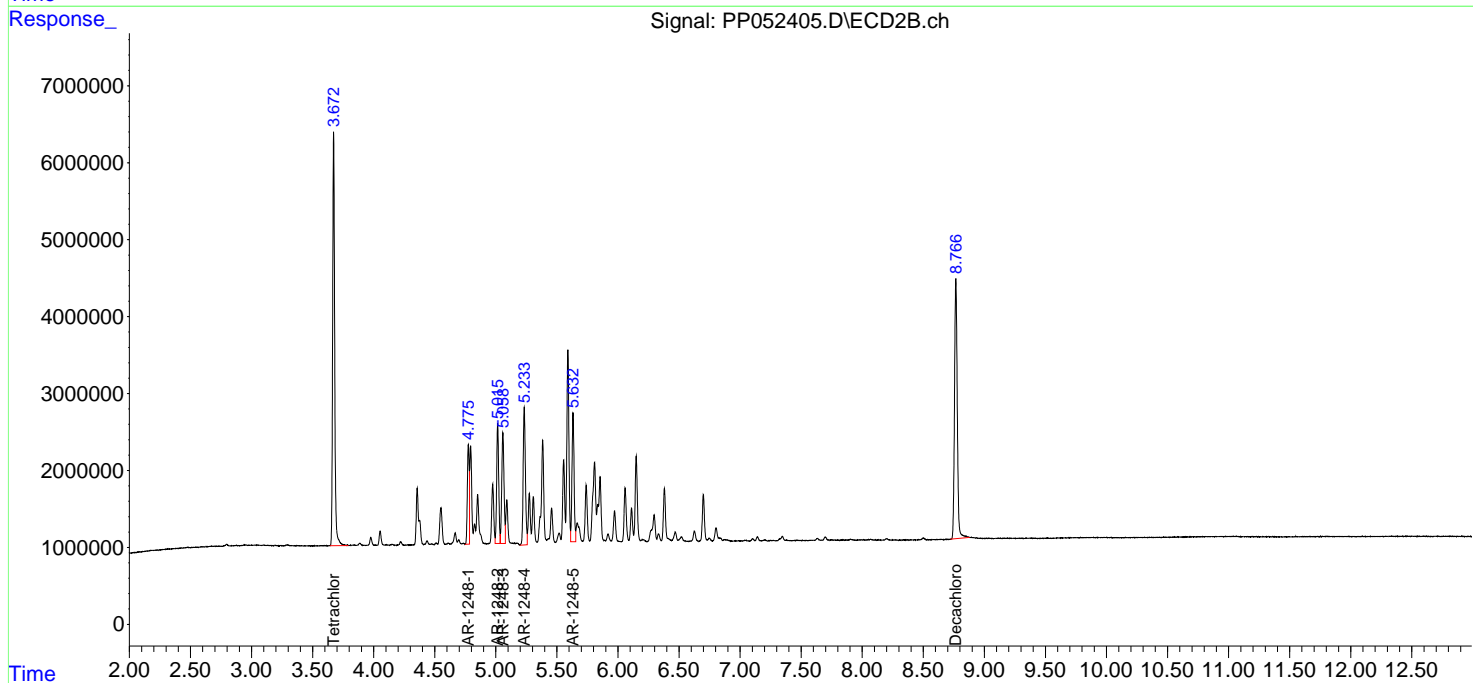
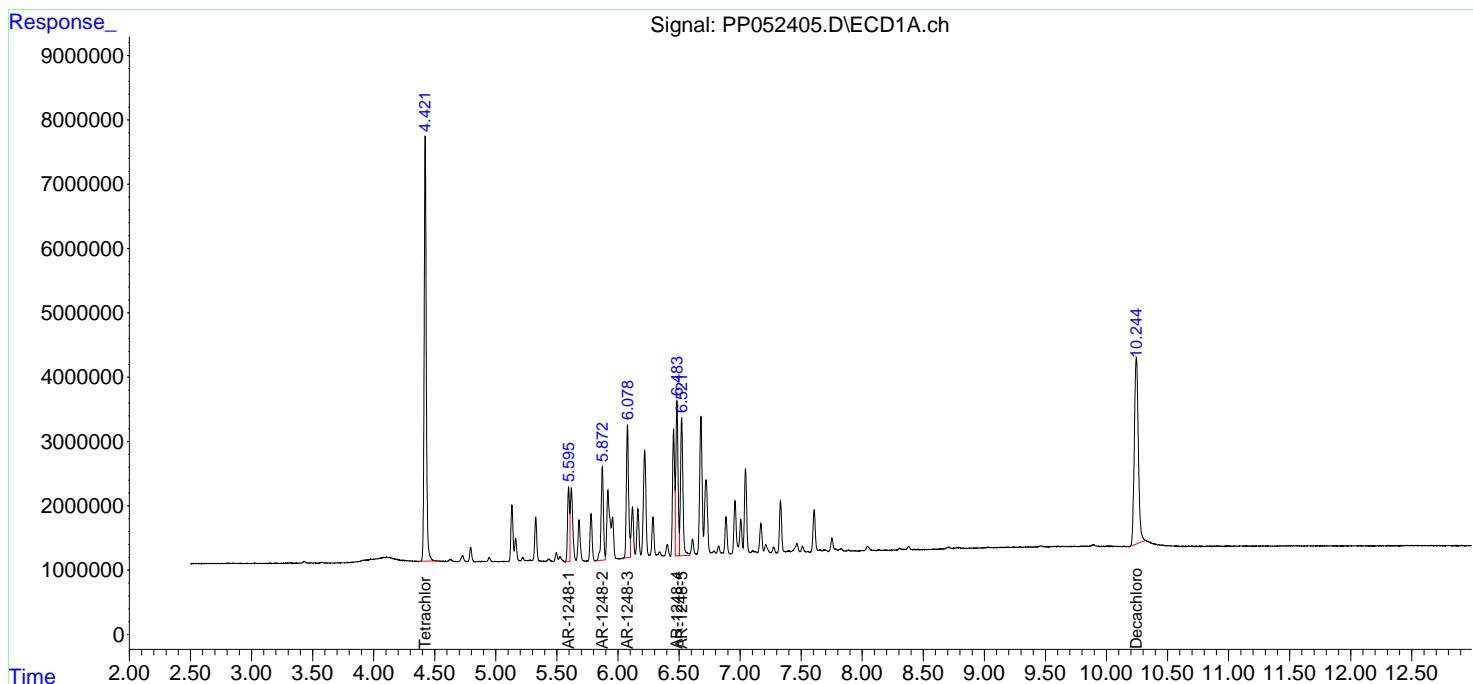
(f)=RT Delta > 1/2 Window (#)=Amounts differ by > 25% (m)=manual int.

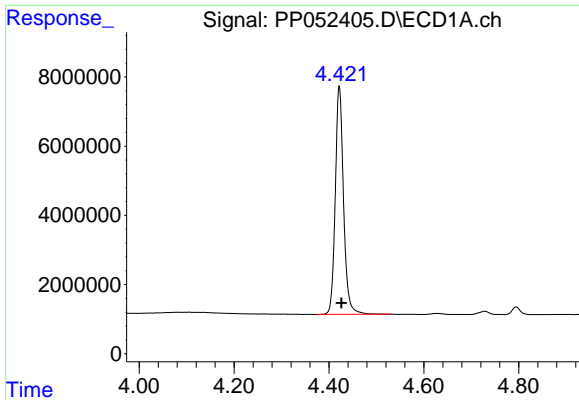
Data Path : Z:\pestpcbsrv\HPCHEM1\ECD_P\Data\PP101722\
 Data File : PP052405.D
 Signal(s) : Signal #1: ECD1A.ch Signal #2: ECD2B.ch
 Acq On : 18 Oct 2022 00:06
 Operator : YP\AJ
 Sample : AR1248CCC500
 Misc :
 ALS Vial : 5 Sample Multiplier: 1

Instrument :
 ECD_P
 ClientSampleId :
 AR1248CCC500

Integration File signal 1: autoint1.e
 Integration File signal 2: autoint2.e
 Quant Time: Oct 18 03:42:10 2022
 Quant Method : Z:\pestpcbsrv\HPCHEM1\ECD_P\methods\PP101122.M
 Quant Title : GC EXTRACTABLES
 QLast Update : Wed Oct 12 05:20:17 2022
 Response via : Initial Calibration
 Integrator: ChemStation

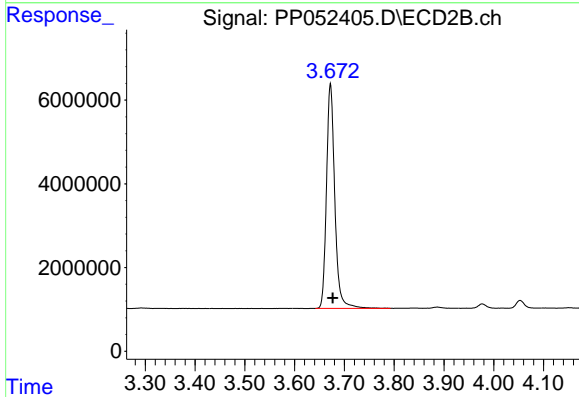
Volume Inj. : 2 µl
 Signal #1 Phase : ZB-MR1 Signal #2 Phase: ZB-MR2
 Signal #1 Info : 30Mx0.32mmx 0.50µ Signal #2 Info : 30M x 0.32mm x 0.25µm



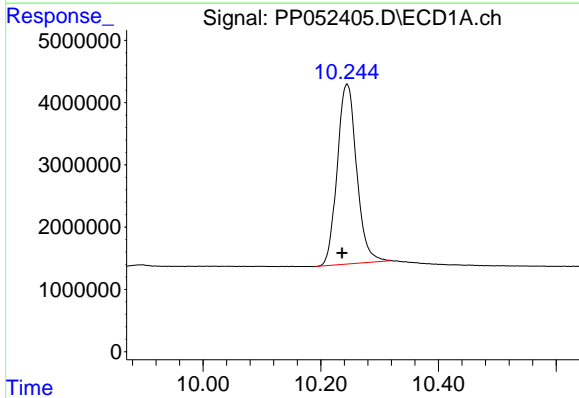


#1 Tetrachloro-m-xylene
 R.T.: 4.422 min
 Delta R.T.: -0.004 min
 Response: 79643424
 Conc: 50.67 ng/ml

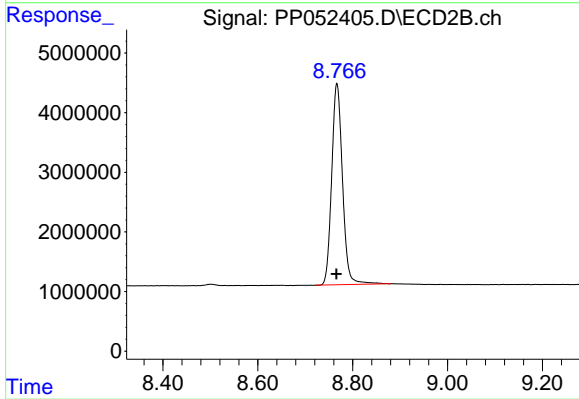
Instrument :
 ECD_P
 ClientSampleId :
 AR1248CCC500



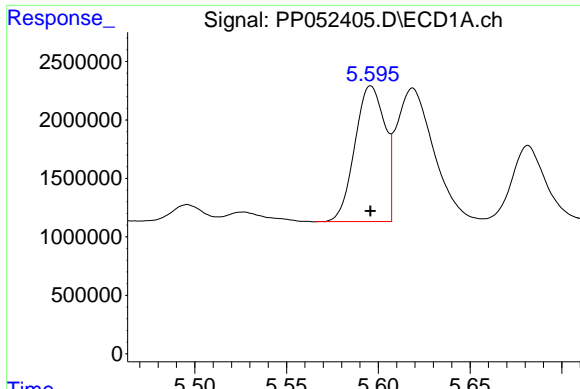
#1 Tetrachloro-m-xylene
 R.T.: 3.672 min
 Delta R.T.: -0.004 min
 Response: 62343295
 Conc: 54.42 ng/ml



#2 Decachlorobiphenyl
 R.T.: 10.245 min
 Delta R.T.: 0.008 min
 Response: 66159874
 Conc: 47.67 ng/ml



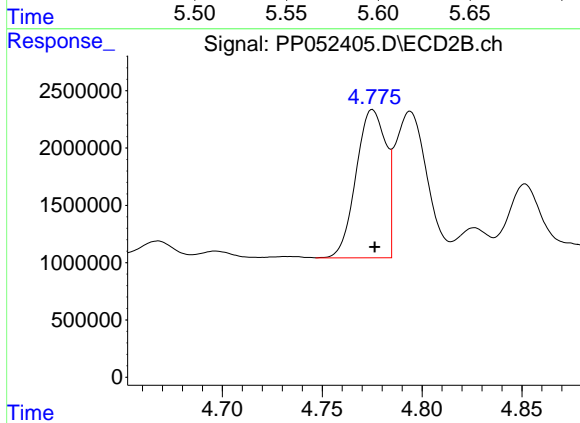
#2 Decachlorobiphenyl
 R.T.: 8.767 min
 Delta R.T.: 0.000 min
 Response: 53395608
 Conc: 47.79 ng/ml



#21 AR-1248-1

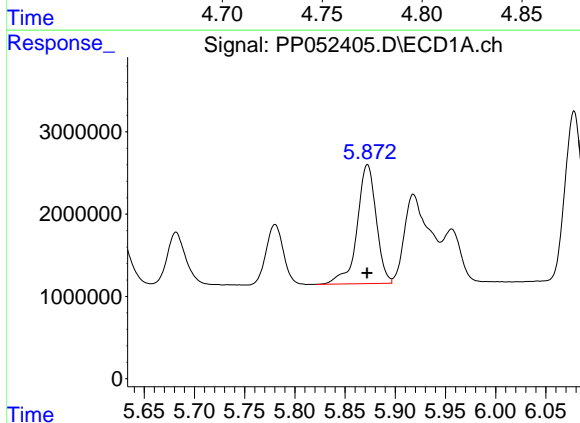
R.T.: 5.596 min
Delta R.T.: 0.000 min
Response: 13217751
Conc: 491.68 ng/ml

Instrument :
ECD_P
ClientSampleId :
AR1248CCC500



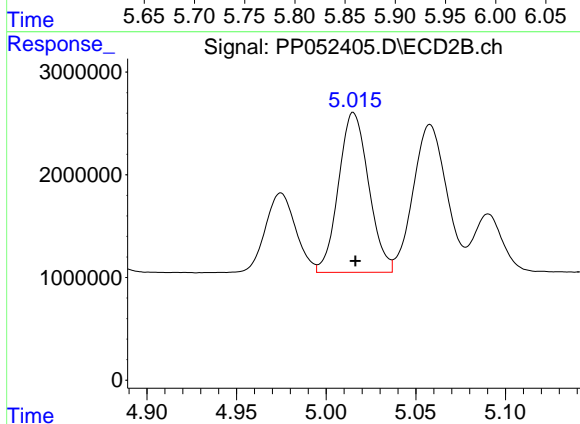
#21 AR-1248-1

R.T.: 4.776 min
Delta R.T.: 0.000 min
Response: 13460095
Conc: 496.47 ng/ml



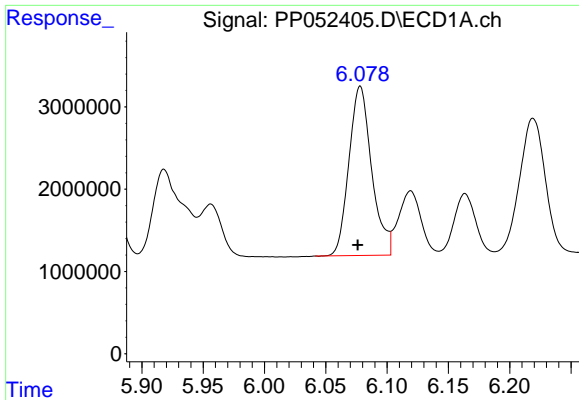
#22 AR-1248-2

R.T.: 5.872 min
Delta R.T.: 0.000 min
Response: 19138312
Conc: 411.73 ng/ml



#22 AR-1248-2

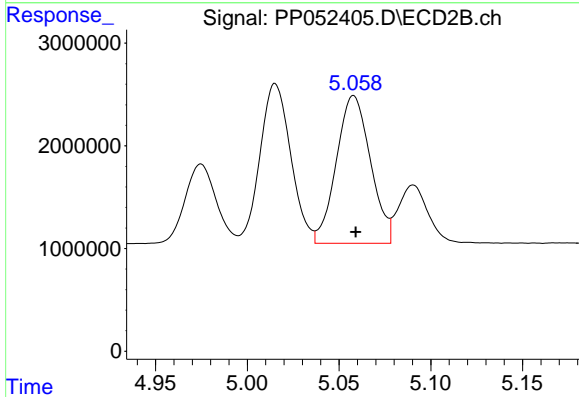
R.T.: 5.015 min
Delta R.T.: 0.000 min
Response: 18202327
Conc: 489.25 ng/ml



#23 AR-1248-3

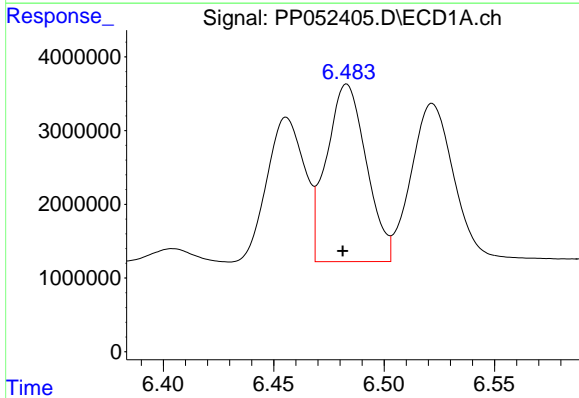
R.T.: 6.078 min
 Delta R.T.: 0.002 min
 Response: 26517448
 Conc: 478.90 ng/ml

Instrument :
 ECD_P
 ClientSampleId :
 AR1248CCC500



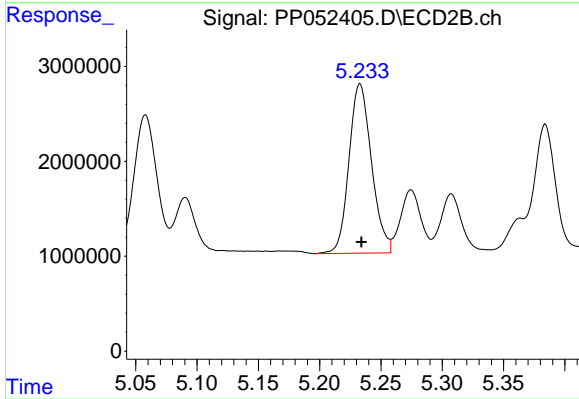
#23 AR-1248-3

R.T.: 5.058 min
 Delta R.T.: -0.001 min
 Response: 18634322
 Conc: 489.14 ng/ml



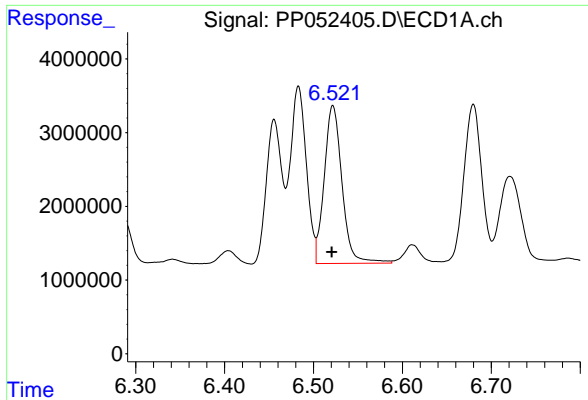
#24 AR-1248-4

R.T.: 6.483 min
 Delta R.T.: 0.002 min
 Response: 30153550
 Conc: 474.91 ng/ml



#24 AR-1248-4

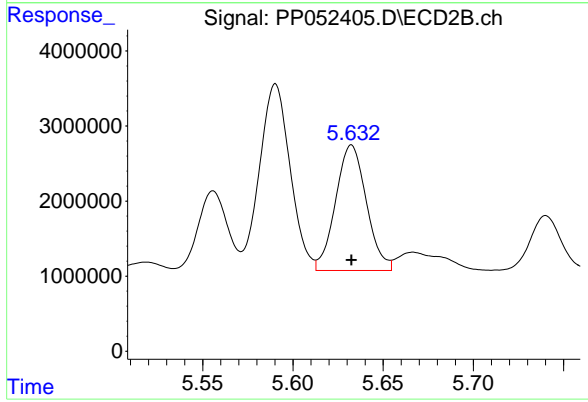
R.T.: 5.233 min
 Delta R.T.: -0.001 min
 Response: 22796991
 Conc: 492.00 ng/ml



#25 AR-1248-5

R.T.: 6.522 min
Delta R.T.: 0.001 min
Response: 29753153
Conc: 480.39 ng/ml

Instrument :
ECD_P
ClientSampleId :
AR1248CCC500



#25 AR-1248-5

R.T.: 5.632 min
Delta R.T.: 0.000 min
Response: 19926854
Conc: 473.85 ng/ml