

Data Path : Z:\pestpcbsrv\HPCHEM1\ECD\_P\Data\PP101822\  
 Data File : PP052416.D  
 Signal(s) : Signal #1: ECD1A.ch Signal #2: ECD2B.ch  
 Acq On : 18 Oct 2022 12:00  
 Operator : YP\AJ  
 Sample : N5159-11DL 100X  
 Misc :  
 ALS Vial : 9 Sample Multiplier: 1

Instrument :  
 ECD\_P  
 ClientSampleId :  
 SB-42DL

Integration File signal 1: autoint1.e  
 Integration File signal 2: autoint2.e  
 Quant Time: Oct 19 04:38:37 2022  
 Quant Method : Z:\pestpcbsrv\HPCHEM1\ECD\_P\methods\PP101122.M  
 Quant Title : GC EXTRACTABLES  
 QLast Update : Wed Oct 12 05:20:17 2022  
 Response via : Initial Calibration  
 Integrator: ChemStation

Volume Inj. : 2 µl  
 Signal #1 Phase : ZB-MR1 Signal #2 Phase: ZB-MR2  
 Signal #1 Info : 30Mx0.32mmx 0.50µ Signal #2 Info : 30M x 0.32mm x 0.25µm

Compound	RT#1	RT#2	Resp#1	Resp#2	ng/ml	ng/ml
----------	------	------	--------	--------	-------	-------

System Monitoring Compounds

Target Compounds

21)	L5	AR-1248-1	5.596	4.775	10415360	10437496	387.438	384.985
22)	L5	AR-1248-2	5.871	5.015	25606380	25366459	550.884	681.812
23)	L5	AR-1248-3	6.077	5.058	45638811	30918650	824.222	811.590
24)	L5	AR-1248-4	6.483	5.233	30784266	39612765	484.846	854.919 #
25)	L5	AR-1248-5	6.521	5.632	29701808	20008186	479.565	475.781

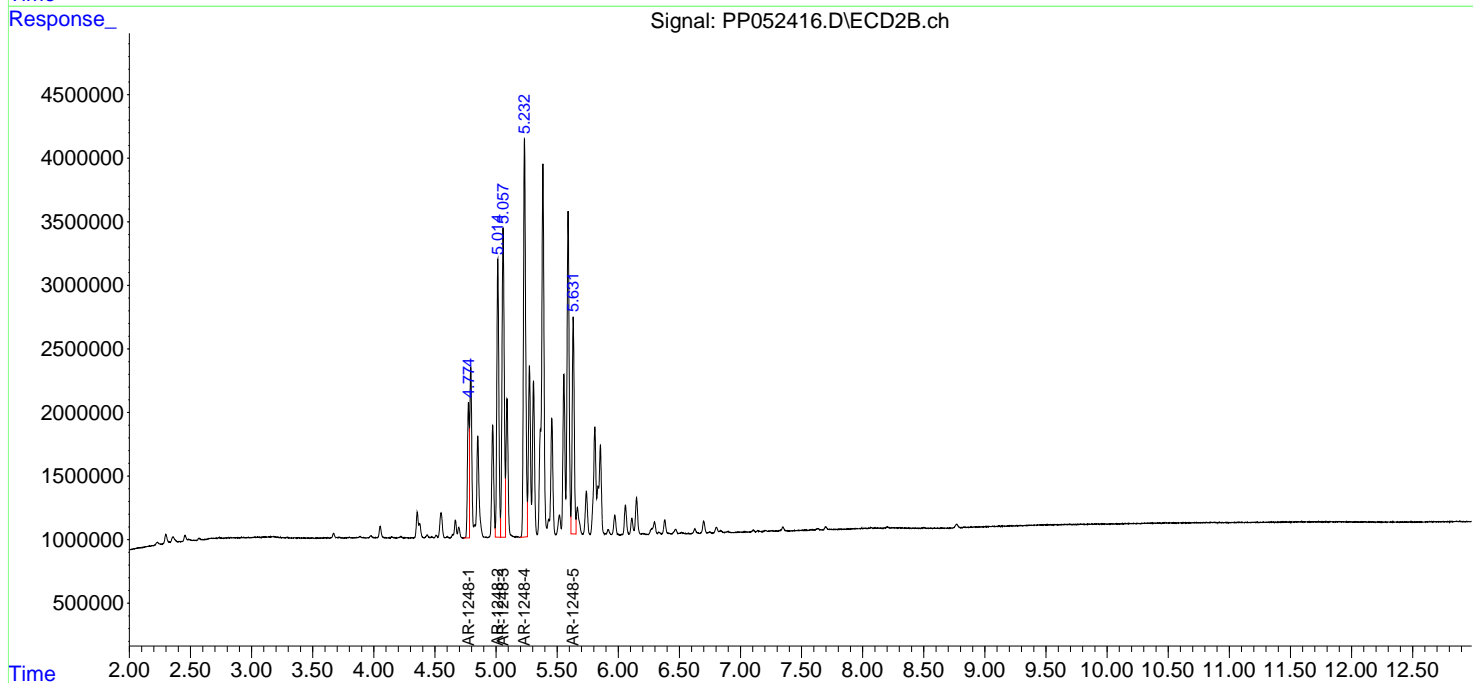
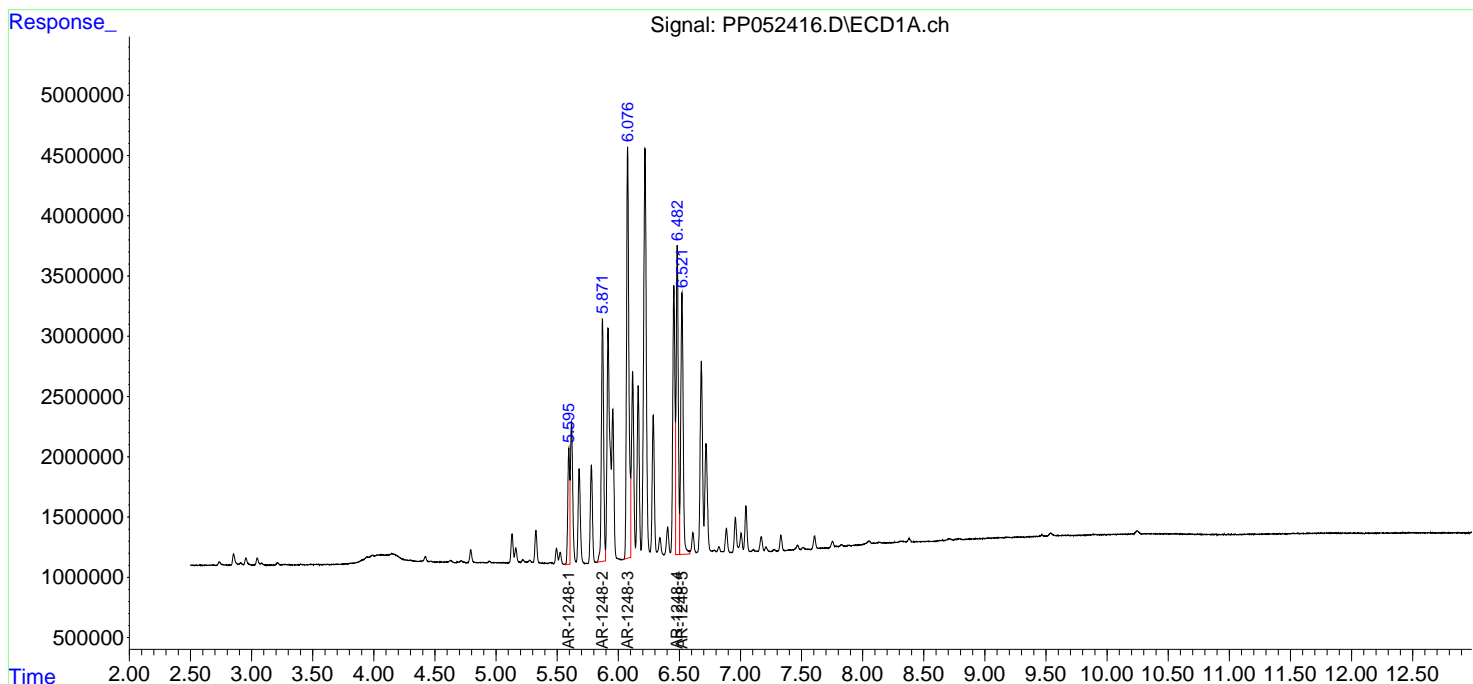
(f)=RT Delta > 1/2 Window (#)=Amounts differ by > 25% (m)=manual int.

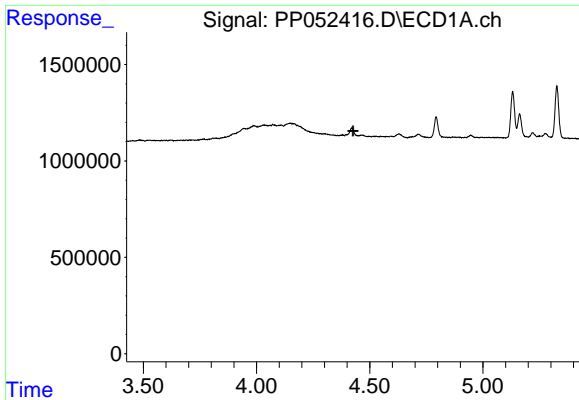
Data Path : Z:\pestpcbsrv\HPCHEM1\ECD\_P\Data\PP101822\  
 Data File : PP052416.D  
 Signal(s) : Signal #1: ECD1A.ch Signal #2: ECD2B.ch  
 Acq On : 18 Oct 2022 12:00  
 Operator : YP\AJ  
 Sample : N5159-11DL 100X  
 Misc :  
 ALS Vial : 9 Sample Multiplier: 1

Instrument :  
 ECD\_P  
 ClientSampleId :  
 SB-42DL

Integration File signal 1: autoint1.e  
 Integration File signal 2: autoint2.e  
 Quant Time: Oct 19 04:38:37 2022  
 Quant Method : Z:\pestpcbsrv\HPCHEM1\ECD\_P\methods\PP101122.M  
 Quant Title : GC EXTRACTABLES  
 QLast Update : Wed Oct 12 05:20:17 2022  
 Response via : Initial Calibration  
 Integrator: ChemStation

Volume Inj. : 2 µl  
 Signal #1 Phase : ZB-MR1 Signal #2 Phase: ZB-MR2  
 Signal #1 Info : 30Mx0.32mmx 0.50µ Signal #2 Info : 30M x 0.32mm x 0.25µm

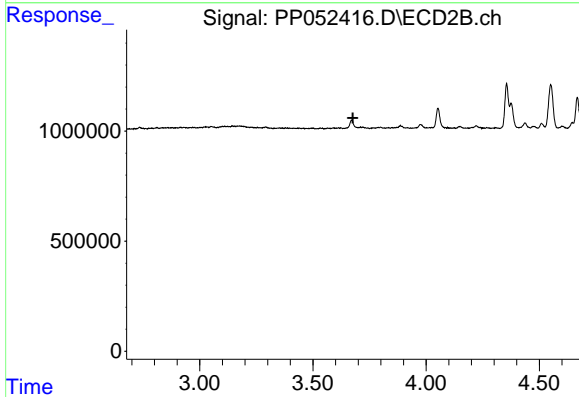




#1 Tetrachloro-m-xylene

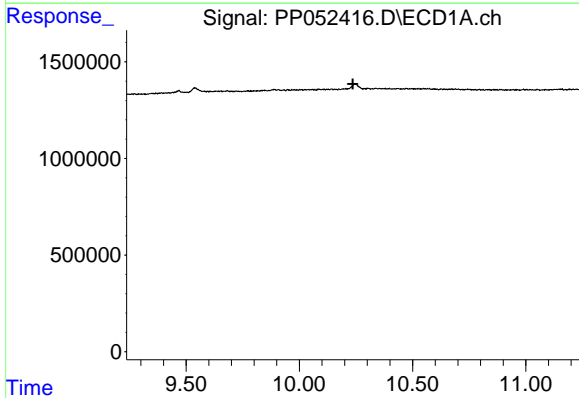
R.T.: 0.000 min  
 Exp R.T. : 4.426 min  
 Response: 0  
 Conc: N.D.

Instrument :  
 ECD\_P  
 ClientSampleId :  
 SB-42DL



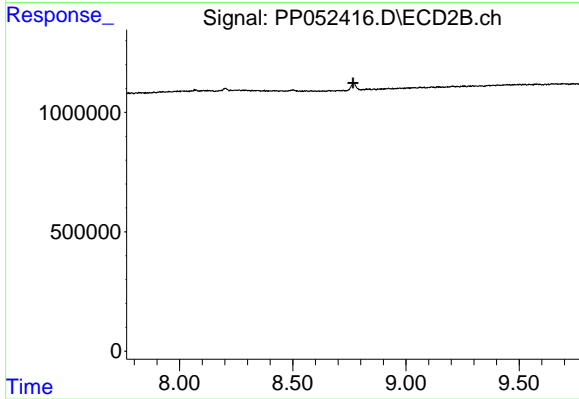
#1 Tetrachloro-m-xylene

R.T.: 0.000 min  
 Exp R.T. : 3.676 min  
 Response: 0  
 Conc: N.D.



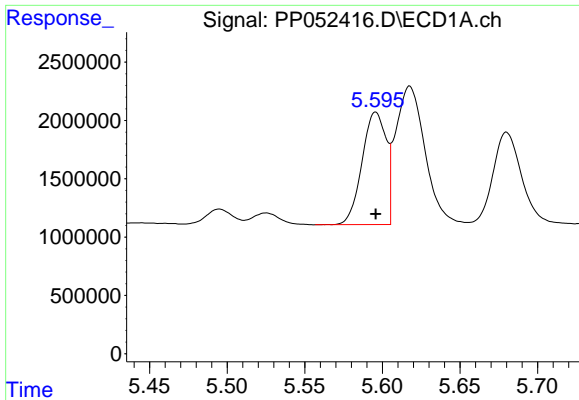
#2 Decachlorobiphenyl

R.T.: 0.000 min  
 Exp R.T. : 10.236 min  
 Response: 0  
 Conc: N.D.



#2 Decachlorobiphenyl

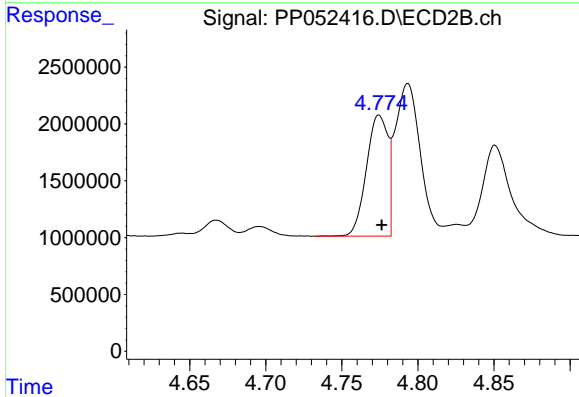
R.T.: 0.000 min  
 Exp R.T. : 8.766 min  
 Response: 0  
 Conc: N.D.



#21 AR-1248-1

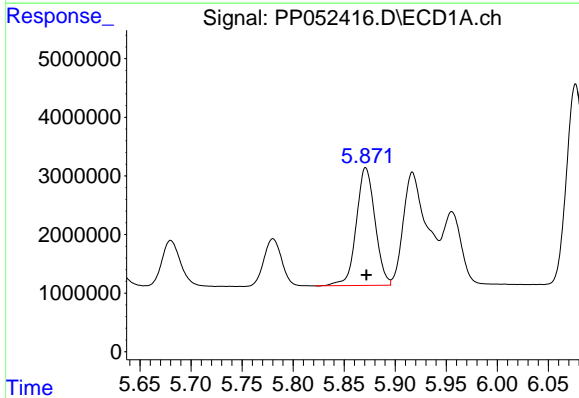
R.T.: 5.596 min  
 Delta R.T.: 0.000 min  
 Response: 10415360  
 Conc: 387.44 ng/ml

Instrument :  
 ECD\_P  
 ClientSampleId :  
 SB-42DL



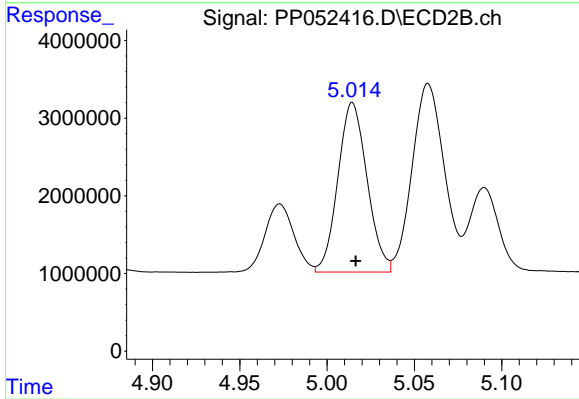
#21 AR-1248-1

R.T.: 4.775 min  
 Delta R.T.: -0.002 min  
 Response: 10437496  
 Conc: 384.99 ng/ml



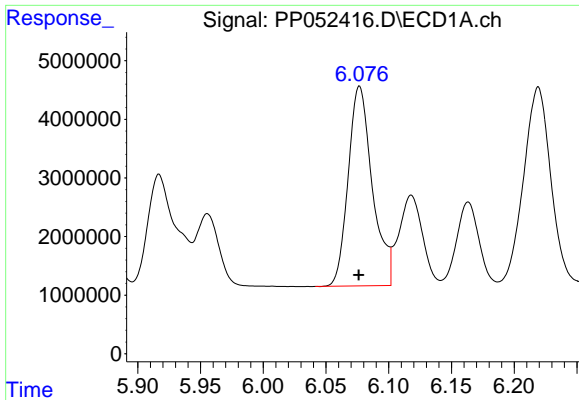
#22 AR-1248-2

R.T.: 5.871 min  
 Delta R.T.: 0.000 min  
 Response: 25606380  
 Conc: 550.88 ng/ml



#22 AR-1248-2

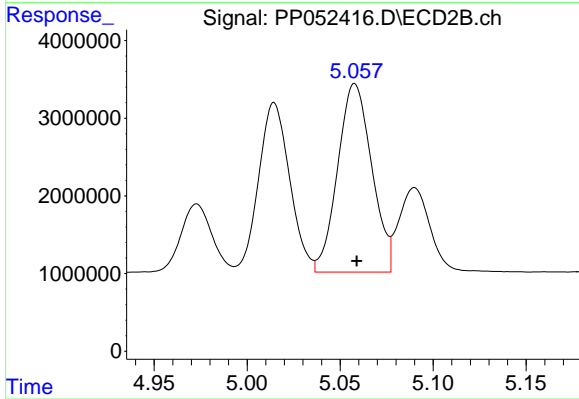
R.T.: 5.015 min  
 Delta R.T.: -0.002 min  
 Response: 25366459  
 Conc: 681.81 ng/ml



#23 AR-1248-3

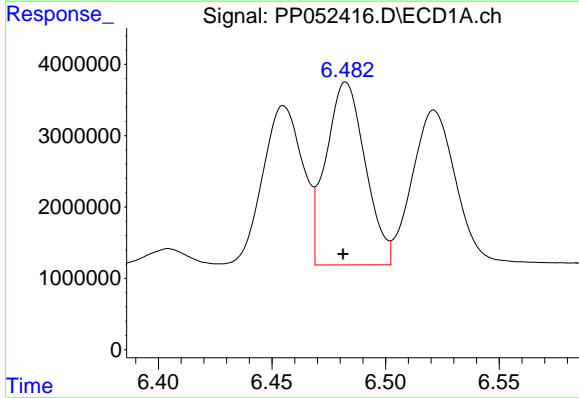
R.T.: 6.077 min  
 Delta R.T.: 0.000 min  
 Response: 45638811  
 Conc: 824.22 ng/ml

Instrument :  
 ECD\_P  
 ClientSampleId :  
 SB-42DL



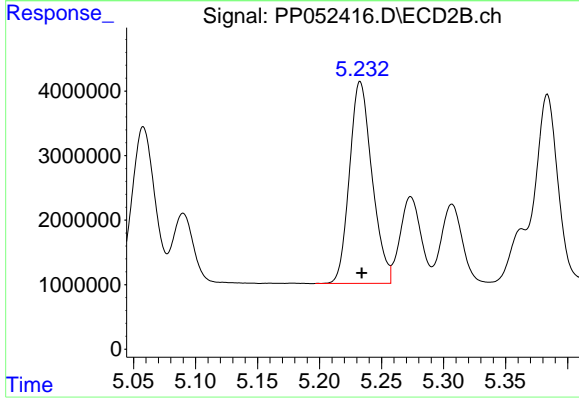
#23 AR-1248-3

R.T.: 5.058 min  
 Delta R.T.: -0.001 min  
 Response: 30918650  
 Conc: 811.59 ng/ml



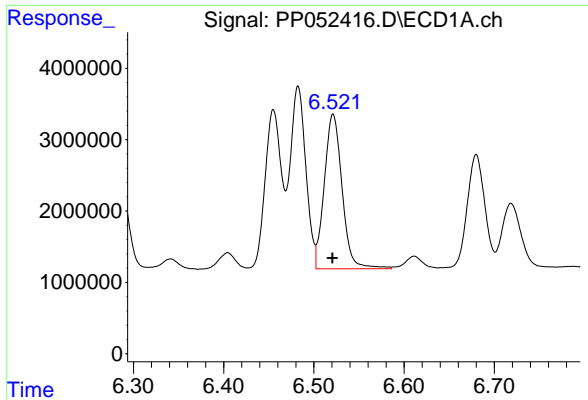
#24 AR-1248-4

R.T.: 6.483 min  
 Delta R.T.: 0.001 min  
 Response: 30784266  
 Conc: 484.85 ng/ml



#24 AR-1248-4

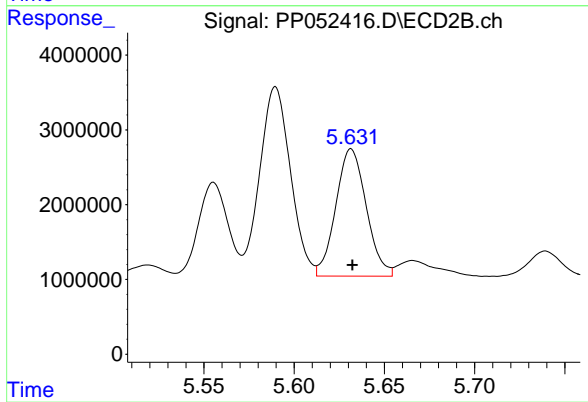
R.T.: 5.233 min  
 Delta R.T.: -0.001 min  
 Response: 39612765  
 Conc: 854.92 ng/ml



#25 AR-1248-5

R.T.: 6.521 min  
Delta R.T.: 0.000 min  
Response: 29701808  
Conc: 479.56 ng/ml

Instrument :  
ECD\_P  
ClientSampleId :  
SB-42DL



#25 AR-1248-5

R.T.: 5.632 min  
Delta R.T.: 0.000 min  
Response: 20008186  
Conc: 475.78 ng/ml