

Data Path : Z:\pestpcbsrv\HPCHEM1\ECD_P\Data\PP101822\
 Data File : PP052428.D
 Signal(s) : Signal #1: ECD1A.ch Signal #2: ECD2B.ch
 Acq On : 18 Oct 2022 15:52
 Operator : YP\AJ
 Sample : N5157-02 10X
 Misc :
 ALS Vial : 16 Sample Multiplier: 1

Instrument :
 ECD_P
ClientSampleId :
 BC260990LOZ-END-1-2

Integration File signal 1: autoint1.e
 Integration File signal 2: autoint2.e
 Quant Time: Oct 19 04:44:29 2022
 Quant Method : Z:\pestpcbsrv\HPCHEM1\ECD_P\methods\PP101122.M
 Quant Title : GC EXTRACTABLES
 QLast Update : Wed Oct 12 05:20:17 2022
 Response via : Initial Calibration
 Integrator: ChemStation

Volume Inj. : 2 µl
 Signal #1 Phase : ZB-MR1 Signal #2 Phase: ZB-MR2
 Signal #1 Info : 30Mx0.32mmx 0.50µ Signal #2 Info : 30M x 0.32mm x 0.25µm

Compound	RT#1	RT#2	Resp#1	Resp#2	ng/ml	ng/ml

System Monitoring Compounds						
1) SA Tetrachlo...	4.421	3.671	3298346	2630049	2.098	2.296
2) SA Decachlor...	10.244	8.769	3502714	2542536	2.524	2.275

Target Compounds

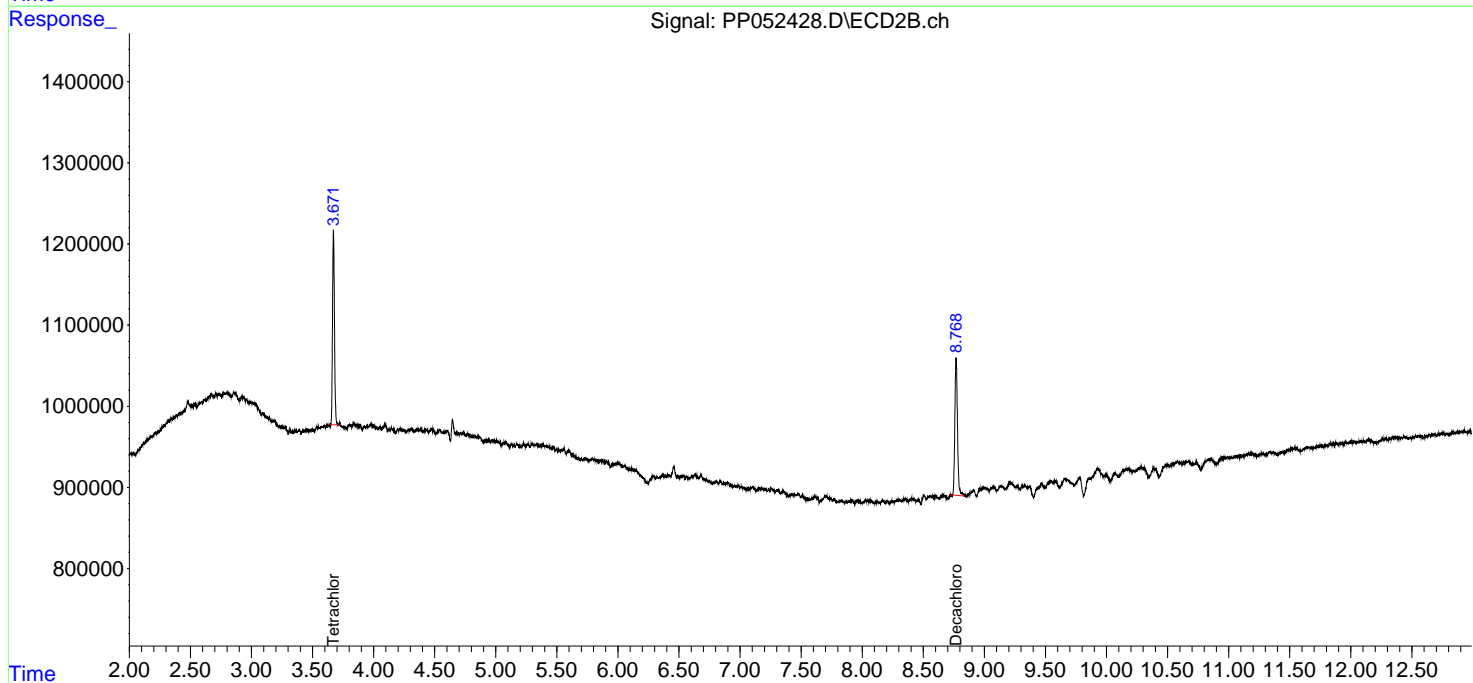
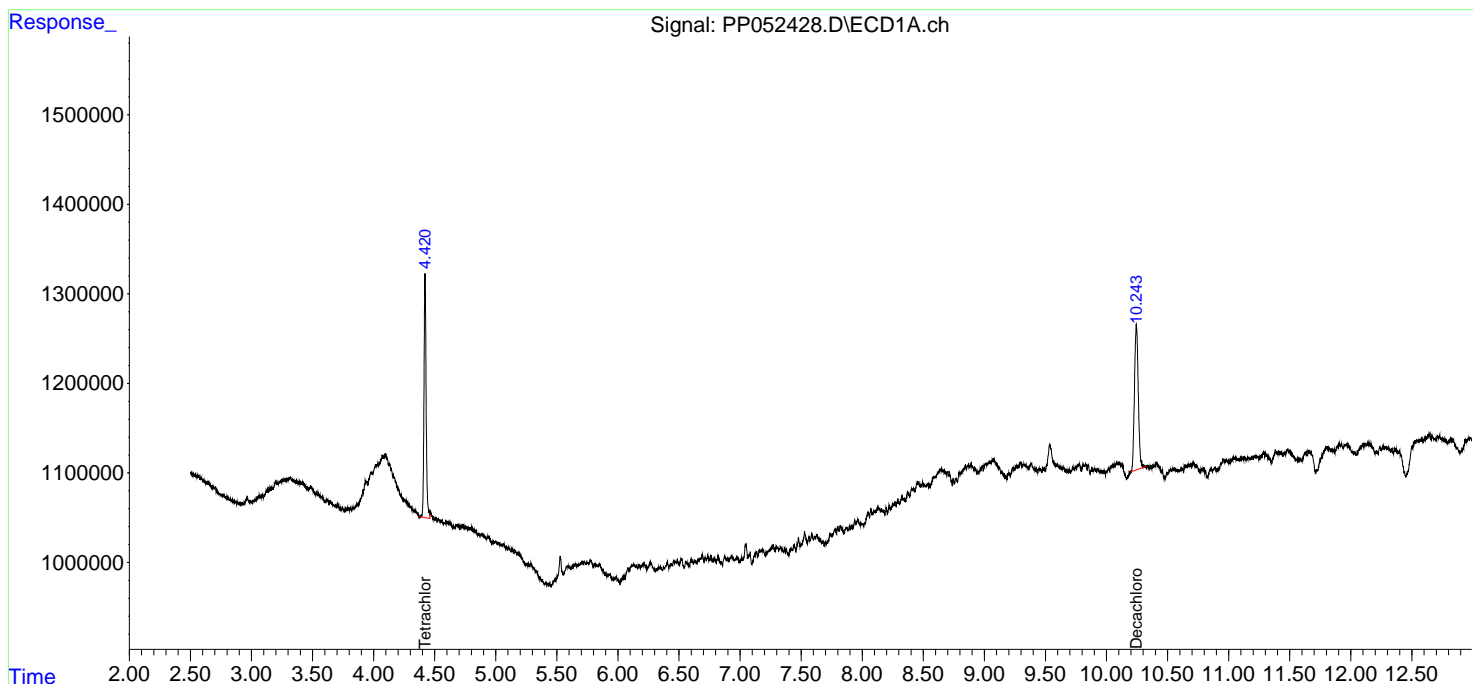
 (f)=RT Delta > 1/2 Window (#)=Amounts differ by > 25% (m)=manual int.

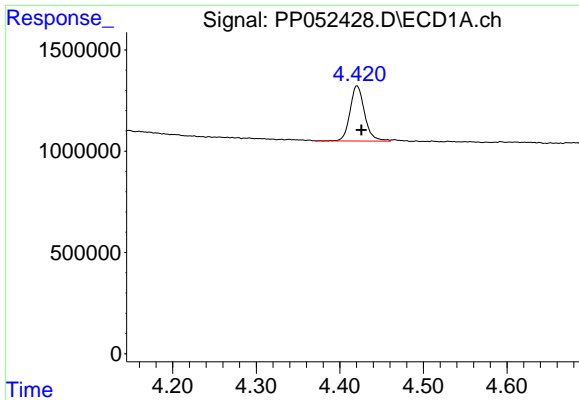
Data Path : Z:\pestpcbsrv\HPCHEM1\ECD_P\Data\PP101822\
 Data File : PP052428.D
 Signal(s) : Signal #1: ECD1A.ch Signal #2: ECD2B.ch
 Acq On : 18 Oct 2022 15:52
 Operator : YP\AJ
 Sample : N5157-02 10X
 Misc :
 ALS Vial : 16 Sample Multiplier: 1

Instrument :
 ECD_P
ClientSampleId :
 BC260990LOZ-END-1-2

Integration File signal 1: autoint1.e
 Integration File signal 2: autoint2.e
 Quant Time: Oct 19 04:44:29 2022
 Quant Method : Z:\pestpcbsrv\HPCHEM1\ECD_P\methods\PP101122.M
 Quant Title : GC EXTRACTABLES
 QLast Update : Wed Oct 12 05:20:17 2022
 Response via : Initial Calibration
 Integrator: ChemStation

Volume Inj. : 2 µl
 Signal #1 Phase : ZB-MR1 Signal #2 Phase: ZB-MR2
 Signal #1 Info : 30Mx0.32mmx 0.50µ Signal #2 Info : 30M x 0.32mm x 0.25µm

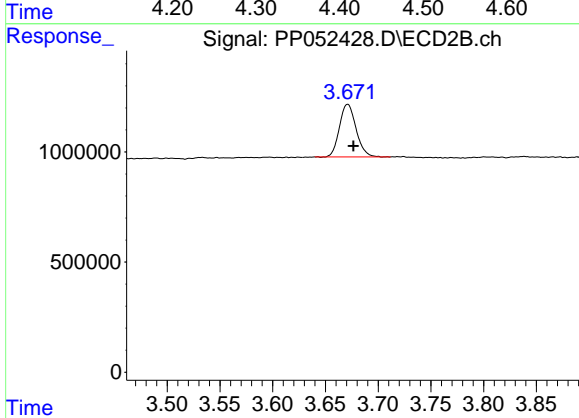




#1 Tetrachloro-m-xylene

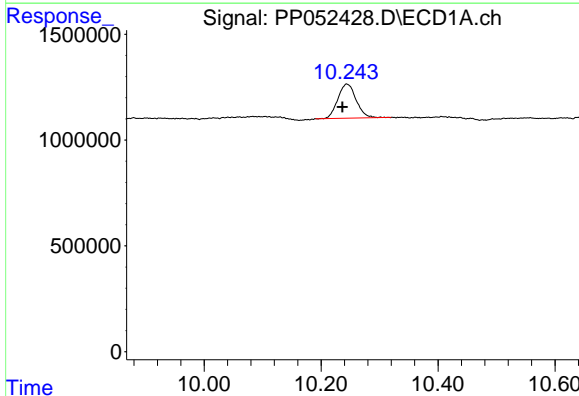
R.T.: 4.421 min
 Delta R.T.: -0.005 min
 Response: 3298346
 Conc: 2.10 ng/ml

Instrument :
 ECD_P
 ClientSampleId :
 BC260990LOZ-END-1-2



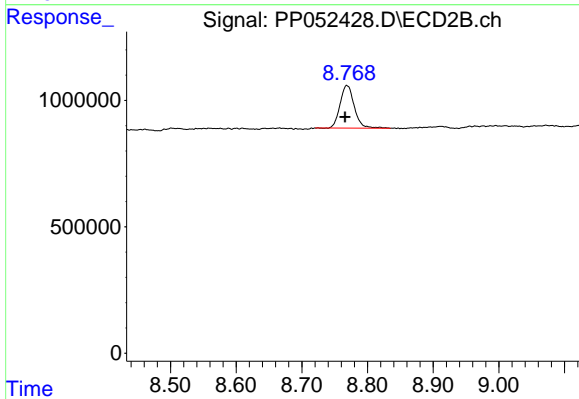
#1 Tetrachloro-m-xylene

R.T.: 3.671 min
 Delta R.T.: -0.005 min
 Response: 2630049
 Conc: 2.30 ng/ml



#2 Decachlorobiphenyl

R.T.: 10.244 min
 Delta R.T.: 0.008 min
 Response: 3502714
 Conc: 2.52 ng/ml



#2 Decachlorobiphenyl

R.T.: 8.769 min
 Delta R.T.: 0.003 min
 Response: 2542536
 Conc: 2.28 ng/ml