

Data Path : Z:\pestpcbsrv\HPCHEM1\ECD_P\Data\PP101823\
 Data File : PP061069.D
 Signal(s) : Signal #1: ECD1A.ch Signal #2: ECD2B.ch
 Acq On : 19 Oct 2023 02:53
 Operator : YP\AJ
 Sample : AR1254CCC500
 Misc :
 ALS Vial : 6 Sample Multiplier: 1

Instrument :
 ECD_P
ClientSampleId :
 AR1254CCC500

Integration File signal 1: autoint1.e
 Integration File signal 2: autoint2.e
 Quant Time: Oct 19 03:06:29 2023
 Quant Method : Z:\pestpcbsrv\HPCHEM1\ECD_P\methods\PP101323.M
 Quant Title : GC EXTRACTABLES
 QLast Update : Sat Oct 14 13:32:01 2023
 Response via : Initial Calibration
 Integrator: ChemStation

Volume Inj. : 2 µl
 Signal #1 Phase : ZB-MR1 Signal #2 Phase: ZB-MR2
 Signal #1 Info : 30Mx0.32mmx 0.50µ Signal #2 Info : 30M x 0.32mm x 0.25µm

Compound	RT#1	RT#2	Resp#1	Resp#2	ng/ml	ng/ml

System Monitoring Compounds						
1) SA Tetrachlo...	4.552	3.687	118.3E6	69861411	53.820	51.673
2) SA Decachlor...	10.507	8.751	88442750	72508718	56.477	48.226
Target Compounds						
26) L6 AR-1254-1	6.611	5.596	40937638	37983586	517.614	491.625
27) L6 AR-1254-2	6.832	5.745	61311880	33857016	514.673	488.653
28) L6 AR-1254-3	7.203	6.152	63777679	54806151	521.315	484.361
29) L6 AR-1254-4	7.492	6.381	45269658	33735163	514.314	490.985
30) L6 AR-1254-5	7.915	6.802	50073710	53370487	504.266	498.933

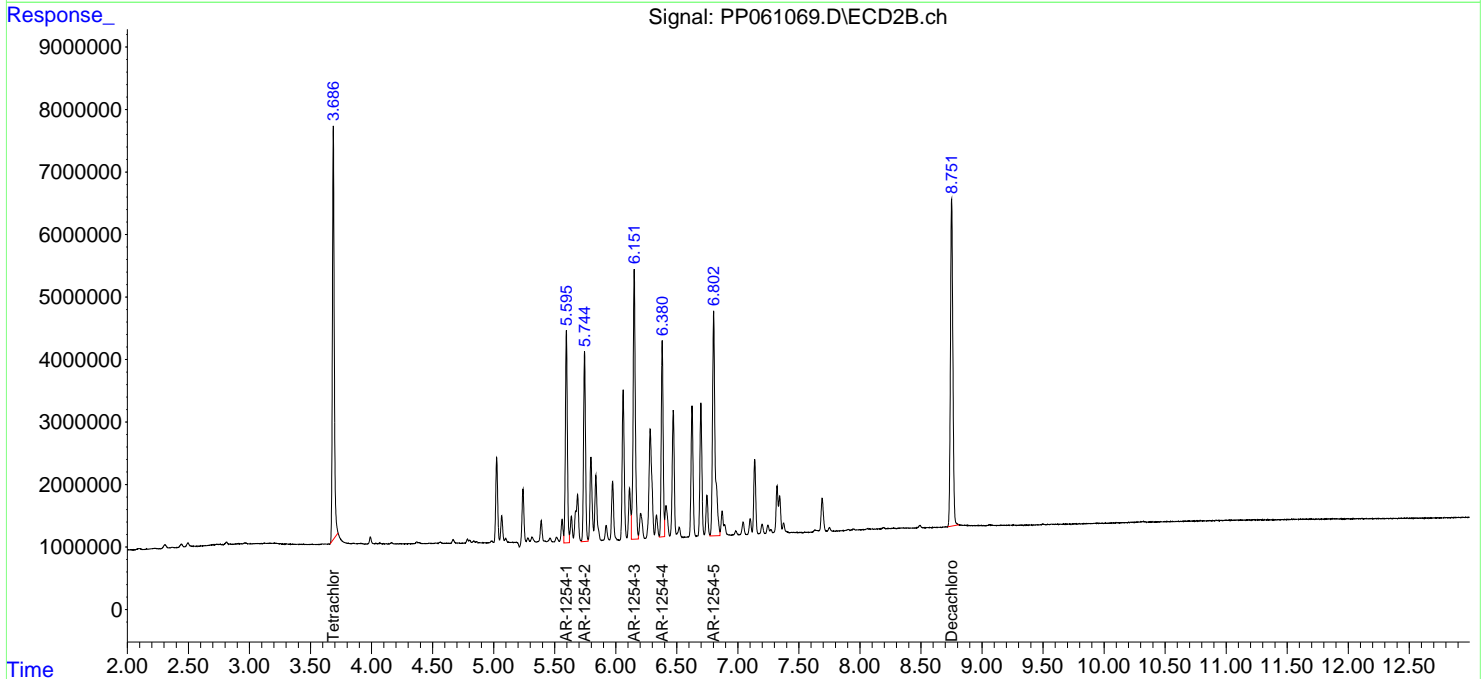
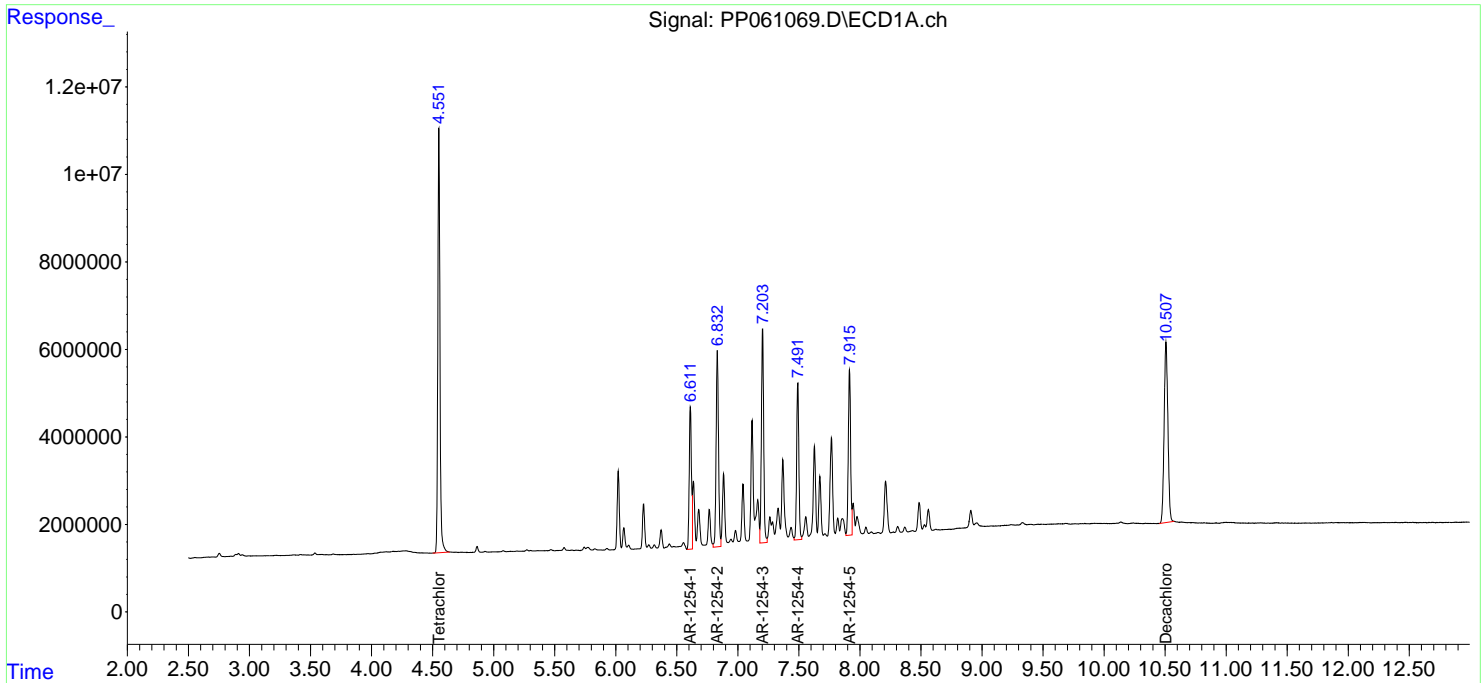
(f)=RT Delta > 1/2 Window (#)=Amounts differ by > 25% (m)=manual int.

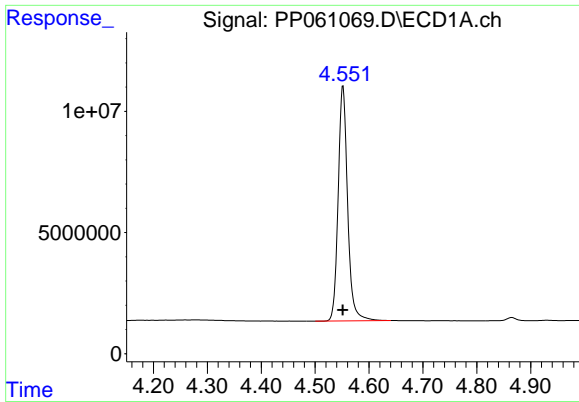
Data Path : Z:\pestpcbsrv\HPCHEM1\ECD_P\Data\PP101823\
 Data File : PP061069.D
 Signal(s) : Signal #1: ECD1A.ch Signal #2: ECD2B.ch
 Acq On : 19 Oct 2023 02:53
 Operator : YP\AJ
 Sample : AR1254CCC500
 Misc :
 ALS Vial : 6 Sample Multiplier: 1

Instrument :
 ECD_P
 ClientSampleId :
 AR1254CCC500

Integration File signal 1: autoint1.e
 Integration File signal 2: autoint2.e
 Quant Time: Oct 19 03:06:29 2023
 Quant Method : Z:\pestpcbsrv\HPCHEM1\ECD_P\methods\PP101323.M
 Quant Title : GC EXTRACTABLES
 QLast Update : Sat Oct 14 13:32:01 2023
 Response via : Initial Calibration
 Integrator: ChemStation

Volume Inj. : 2 µl
 Signal #1 Phase : ZB-MR1 Signal #2 Phase: ZB-MR2
 Signal #1 Info : 30Mx0.32mmx 0.50µ Signal #2 Info : 30M x 0.32mm x 0.25µm

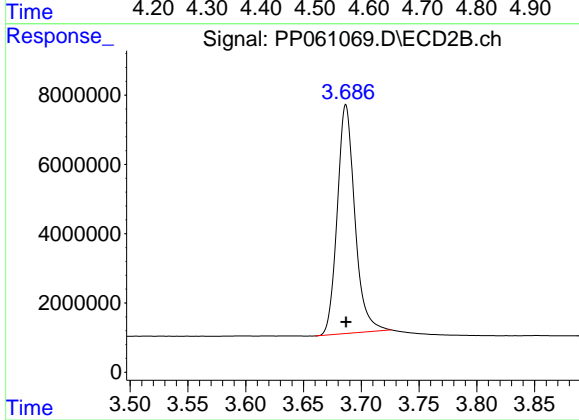




#1 Tetrachloro-m-xylene

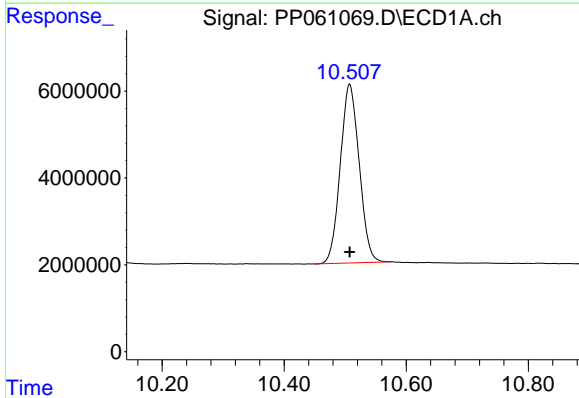
R.T.: 4.552 min
Delta R.T.: 0.000 min
Response: 118314452
Conc: 53.82 ng/ml

Instrument :
ECD_P
ClientSampleId :
AR1254CCC500



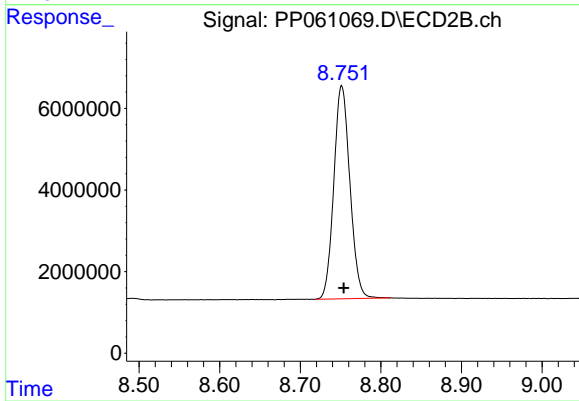
#1 Tetrachloro-m-xylene

R.T.: 3.687 min
Delta R.T.: 0.000 min
Response: 69861411
Conc: 51.67 ng/ml



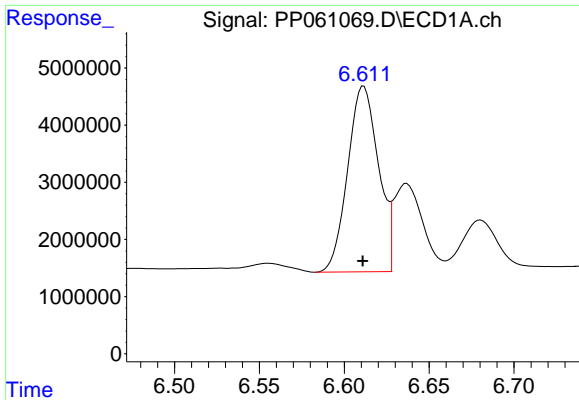
#2 Decachlorobiphenyl

R.T.: 10.507 min
Delta R.T.: 0.000 min
Response: 88442750
Conc: 56.48 ng/ml



#2 Decachlorobiphenyl

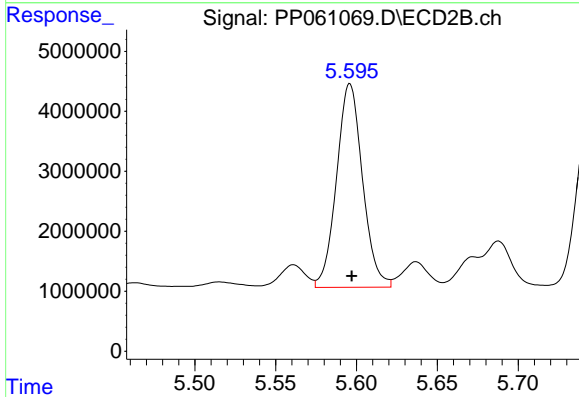
R.T.: 8.751 min
Delta R.T.: -0.002 min
Response: 72508718
Conc: 48.23 ng/ml



#26 AR-1254-1

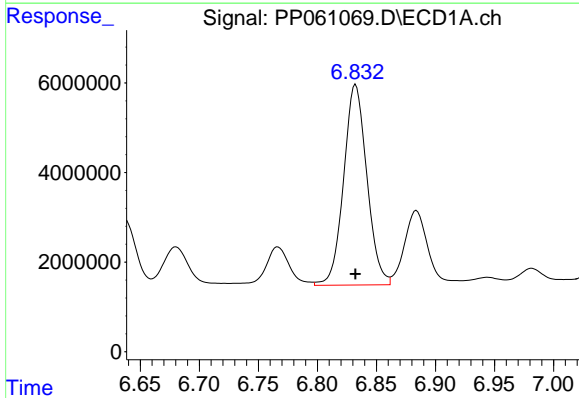
R.T.: 6.611 min
 Delta R.T.: 0.000 min
 Response: 40937638
 Conc: 517.61 ng/ml

Instrument :
 ECD_P
 ClientSampleId :
 AR1254CCC500



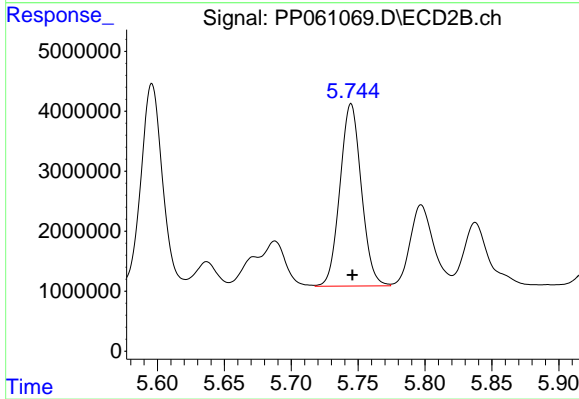
#26 AR-1254-1

R.T.: 5.596 min
 Delta R.T.: -0.001 min
 Response: 37983586
 Conc: 491.63 ng/ml



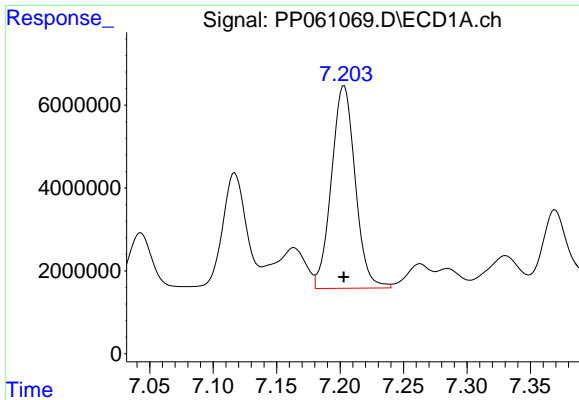
#27 AR-1254-2

R.T.: 6.832 min
 Delta R.T.: 0.000 min
 Response: 61311880
 Conc: 514.67 ng/ml



#27 AR-1254-2

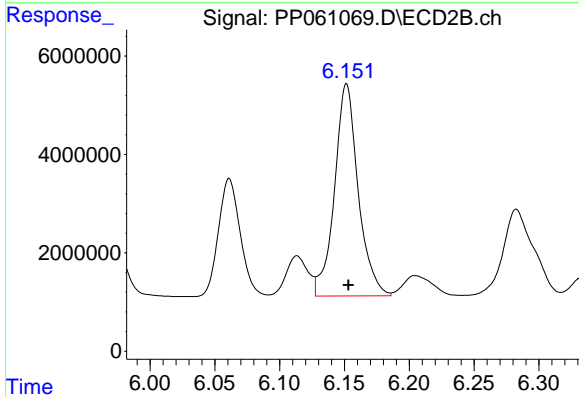
R.T.: 5.745 min
 Delta R.T.: -0.001 min
 Response: 33857016
 Conc: 488.65 ng/ml



#28 AR-1254-3

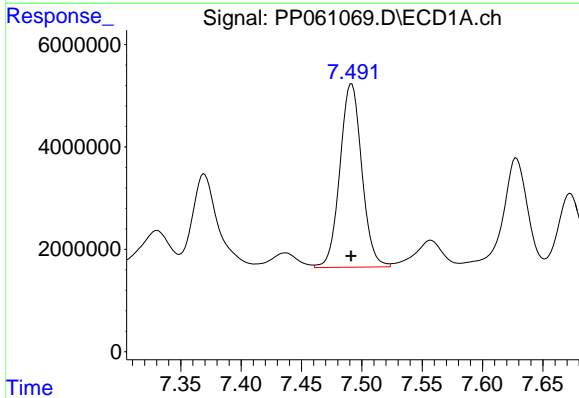
R.T.: 7.203 min
Delta R.T.: 0.000 min
Response: 63777679
Conc: 521.31 ng/ml

Instrument :
ECD_P
ClientSampleId :
AR1254CCC500



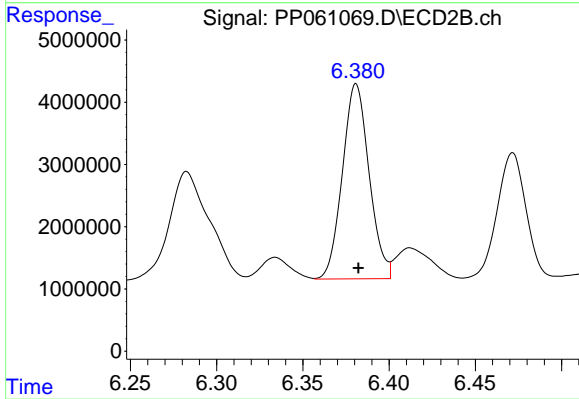
#28 AR-1254-3

R.T.: 6.152 min
Delta R.T.: -0.001 min
Response: 54806151
Conc: 484.36 ng/ml



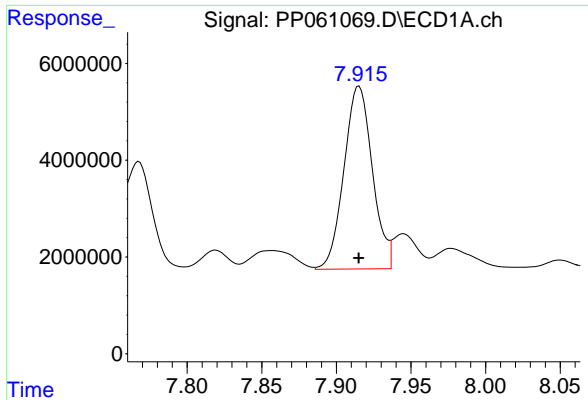
#29 AR-1254-4

R.T.: 7.492 min
Delta R.T.: 0.000 min
Response: 45269658
Conc: 514.31 ng/ml



#29 AR-1254-4

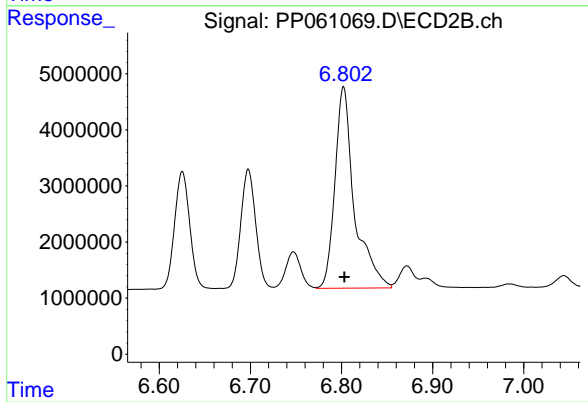
R.T.: 6.381 min
Delta R.T.: -0.001 min
Response: 33735163
Conc: 490.99 ng/ml



#30 AR-1254-5

R.T.: 7.915 min
Delta R.T.: 0.000 min
Response: 50073710
Conc: 504.27 ng/ml

Instrument :
ECD_P
ClientSampleId :
AR1254CCC500



#30 AR-1254-5

R.T.: 6.802 min
Delta R.T.: 0.000 min
Response: 53370487
Conc: 498.93 ng/ml