

Data Path : Z:\pestpcbsrv\HPCHEM1\ECD_P\Data\PP101724\
 Data File : PP068020.D
 Signal(s) : Signal #1: ECD1A.ch Signal #2: ECD2B.ch
 Acq On : 18 Oct 2024 06:11
 Operator : YP\AJ
 Sample : AR1248CCC500
 Misc :
 ALS Vial : 5 Sample Multiplier: 1

Instrument :
 ECD_P
 ClientSampleId :
 AR1248CCC500

Integration File signal 1: autoint1.e
 Integration File signal 2: autoint2.e
 Quant Time: Oct 18 07:43:31 2024
 Quant Method : Z:\pestpcbsrv\HPCHEM1\ECD_P\methods\PP100824.M
 Quant Title : GC EXTRACTABLES
 QLast Update : Wed Oct 09 05:48:32 2024
 Response via : Initial Calibration
 Integrator: ChemStation

Volume Inj. : 2 µl
 Signal #1 Phase : ZB-MR1 Signal #2 Phase: ZB-MR2
 Signal #1 Info : 30Mx0.32mmx 0.50µ Signal #2 Info : 30M x 0.32mm x 0.25µm

Compound	RT#1	RT#2	Resp#1	Resp#2	ng/ml	ng/ml
System Monitoring Compounds						
1) SA Tetrachlo...	4.750	4.048	45791365	47214538	49.470	46.728
2) SA Decachlor...	10.658	9.207	57483303	50999866	49.929	45.476
Target Compounds						
3) L1 AR-1016-1	5.913	5.155	10819387	10516241	327.199	300.574
4) L1 AR-1016-2	5.937	5.175	12864426	10424745	263.773	216.422
5) L1 AR-1016-3	6.000	5.357	6342733	7134005	201.280	264.836 #
6) L1 AR-1016-4	6.098	5.395	7103151	15371238	275.919	638.205 #
7) L1 AR-1016-5	6.392	5.614	17865863	18589893	660.063	611.311
8) L2 AR-1221-1	4.949	4.262	305147	107837	23.821	8.188 #
9) L2 AR-1221-2	5.055	4.356	818524	838032	86.519	84.129
10) L2 AR-1221-3	5.116	4.429	1011329	977763	34.985	31.408
11) L3 AR-1232-1	5.116	4.429	1011329	977763	44.240	40.183
12) L3 AR-1232-2	5.648	5.175	4580382	10424745	388.727	466.119
13) L3 AR-1232-3	5.937	5.357	12864426	7134005	577.527	597.297
14) L3 AR-1232-4	6.098	5.439	7103151	16024035	629.298	1389.605 #
15) L3 AR-1232-5	6.187	5.614	16435262	18589893	1802.076	1382.117
16) L4 AR-1242-1	5.913	5.155	10819387	10516241	387.276	361.676
17) L4 AR-1242-2	5.937	5.175	12864426	10424745	316.587	259.660
18) L4 AR-1242-3	6.000	5.357	6342733	7134005	235.223	317.137 #
19) L4 AR-1242-4	6.098	5.439	7103151	16024035	331.142	675.046 #
20) L4 AR-1242-5	6.832	5.968	19632965	24786712	813.771	865.169
21) L5 AR-1248-1	5.913	5.155	10819387	10516241	505.039	464.011
22) L5 AR-1248-2	6.187	5.395	16435262	15371238	488.902	464.447
23) L5 AR-1248-3	6.392	5.439	17865863	16024035	487.799	464.806
24) L5 AR-1248-4	6.792	5.614	19923421	18589893	492.536	453.900
25) L5 AR-1248-5	6.832	6.011	19632965	17231251	495.020	460.198
26) L6 AR-1254-1	6.767	5.968	15351108	24786712	342.793	419.517
27) L6 AR-1254-2	6.989	6.117	20328391	8313661	307.550	158.464 #
28) L6 AR-1254-3	7.351	6.526	11752339	12316903	169.214	148.025
29) L6 AR-1254-4	7.633	6.755	8249249	8191321	165.301	169.683
30) L6 AR-1254-5	8.051	7.176	2014154	2755692	33.970	37.466
31) L7 AR-1260-1	7.516	6.674	1408075	6042059	26.064	106.072 #
32) L7 AR-1260-2	7.767	6.844	2106846	1381243	33.299	20.707 #
33) L7 AR-1260-3	8.117	7.001	307328	1423897	5.927	22.353 #
34) L7 AR-1260-4	8.350	7.478	895411	252996	14.875	4.576 #
35) L7 AR-1260-5	8.707	7.713	399000	498437	3.704	4.076
36) L8 AR-1262-1	8.350	7.247	895411	422220	12.476	5.367 #
37) L8 AR-1262-2	8.707	7.478	399000	252996	3.282	3.565
38) L8 AR-1262-3	9.051	7.999	396024	121361	4.474	2.125 #
39) L8 AR-1262-4	0.000	8.062	0	417183	N.D.	4.154 #
40) L8 AR-1262-5	0.000	8.590	0	145424	N.D.	2.907 #
41) L9 AR-1268-1	9.051	7.999	396024	121361	2.594	0.763 #

Data Path : Z:\pestpcbsrv\HPCHEM1\ECD_P\Data\PP101724\
 Data File : PP068020.D
 Signal(s) : Signal #1: ECD1A.ch Signal #2: ECD2B.ch
 Acq On : 18 Oct 2024 06:11
 Operator : YP\AJ
 Sample : AR1248CCC500
 Misc :
 ALS Vial : 5 Sample Multiplier: 1

Instrument :
 ECD_P
 ClientSampleId :
 AR1248CCC500

Integration File signal 1: autoint1.e
 Integration File signal 2: autoint2.e
 Quant Time: Oct 18 07:43:31 2024
 Quant Method : Z:\pestpcbsrv\HPCHEM1\ECD_P\methods\PP100824.M
 Quant Title : GC EXTRACTABLES
 QLast Update : Wed Oct 09 05:48:32 2024
 Response via : Initial Calibration
 Integrator: ChemStation

Volume Inj. : 2 µl
 Signal #1 Phase : ZB-MR1 Signal #2 Phase: ZB-MR2
 Signal #1 Info : 30Mx0.32mmx 0.50µ Signal #2 Info : 30M x 0.32mm x 0.25µm

	Compound	RT#1	RT#2	Resp#1	Resp#2	ng/ml	ng/ml
42)	L9 AR-1268-2	0.000	8.062	0	417183	N.D.	2.914 #
43)	L9 AR-1268-3	0.000	8.285	0	218555	N.D.	1.714 #
44)	L9 AR-1268-4	0.000	8.590	0	145424	N.D.	2.575 #
45)	L9 AR-1268-5	10.287	8.918	309288	409036	0.828	1.082 #

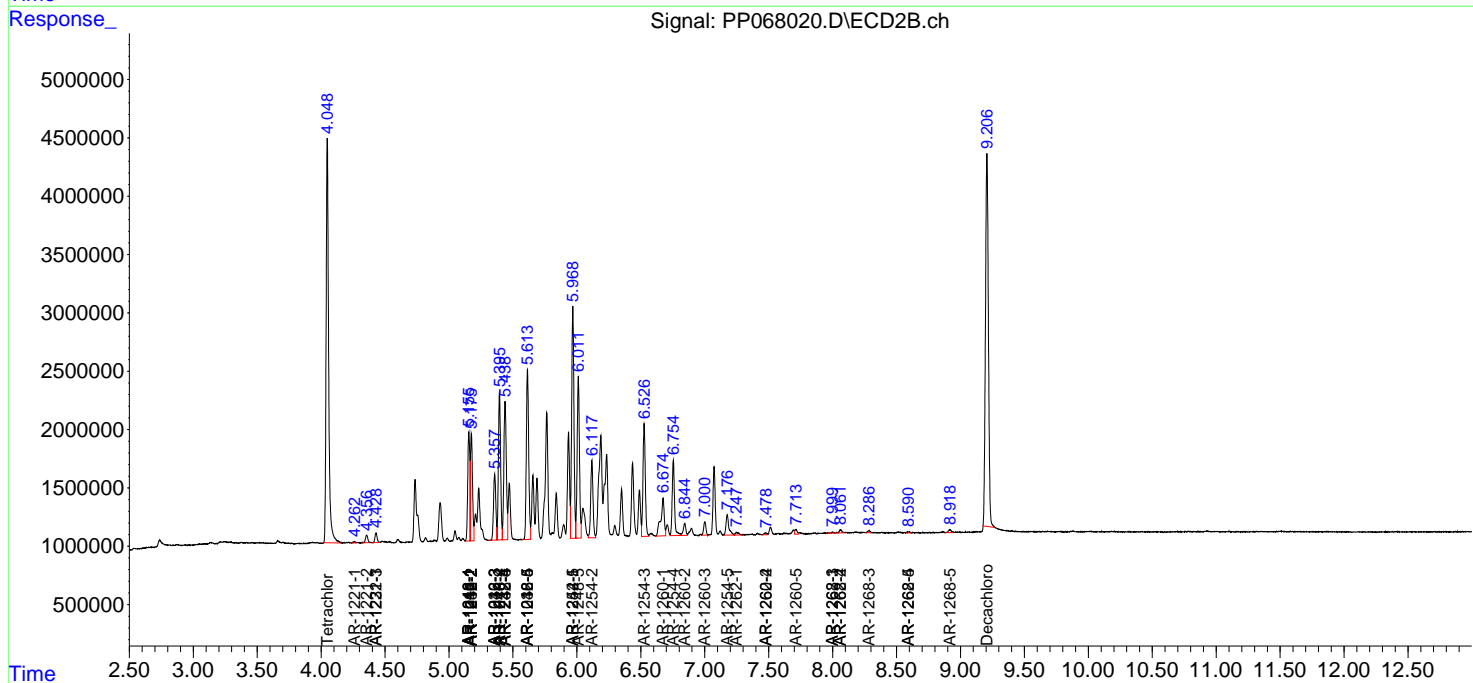
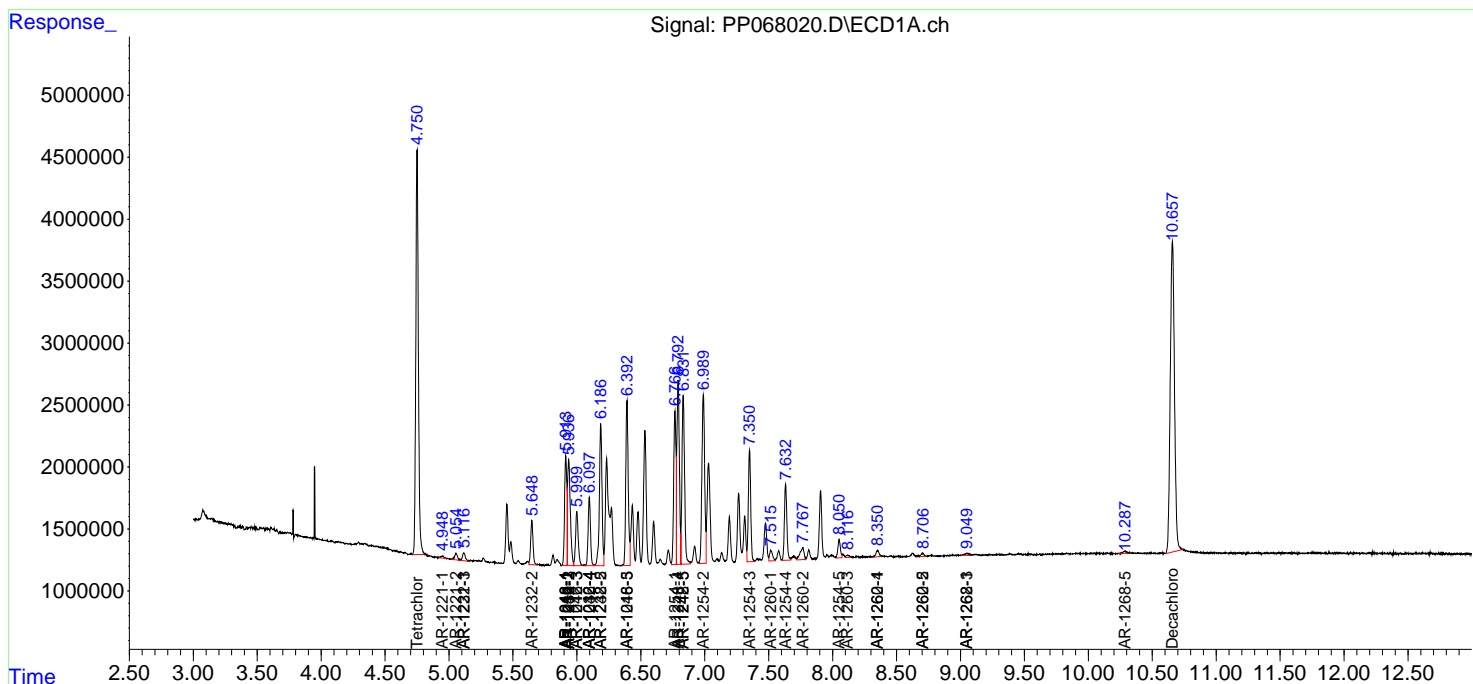
(f)=RT Delta > 1/2 Window (#)=Amounts differ by > 25% (m)=manual int.

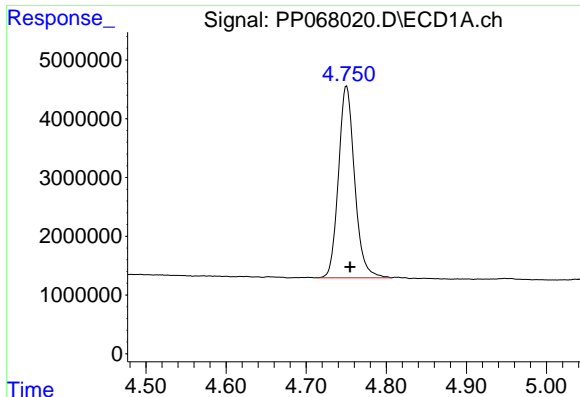
Data Path : Z:\pestpcbsrv\HPCHEM1\ECD_P\Data\PP101724\
 Data File : PP068020.D
 Signal(s) : Signal #1: ECD1A.ch Signal #2: ECD2B.ch
 Acq On : 18 Oct 2024 06:11
 Operator : YP\AJ
 Sample : AR1248CCC500
 Misc :
 ALS Vial : 5 Sample Multiplier: 1

Instrument :
 ECD_P
 ClientSampleId :
 AR1248CCC500

Integration File signal 1: autoint1.e
 Integration File signal 2: autoint2.e
 Quant Time: Oct 18 07:43:31 2024
 Quant Method : Z:\pestpcbsrv\HPCHEM1\ECD_P\methods\PP100824.M
 Quant Title : GC EXTRACTABLES
 QLast Update : Wed Oct 09 05:48:32 2024
 Response via : Initial Calibration
 Integrator: ChemStation

Volume Inj. : 2 µl
 Signal #1 Phase : ZB-MR1 Signal #2 Phase: ZB-MR2
 Signal #1 Info : 30Mx0.32mmx 0.50µ Signal #2 Info : 30M x 0.32mm x 0.25µm

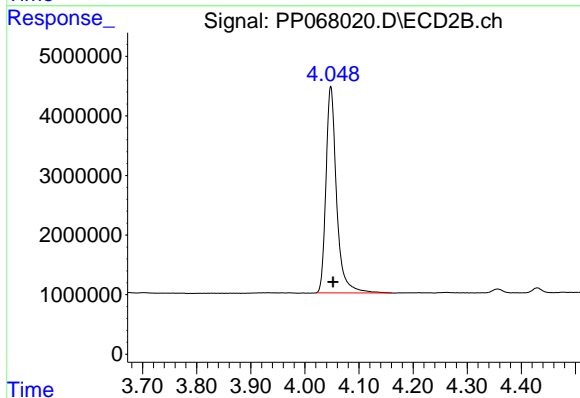




#1 Tetrachloro-m-xylene

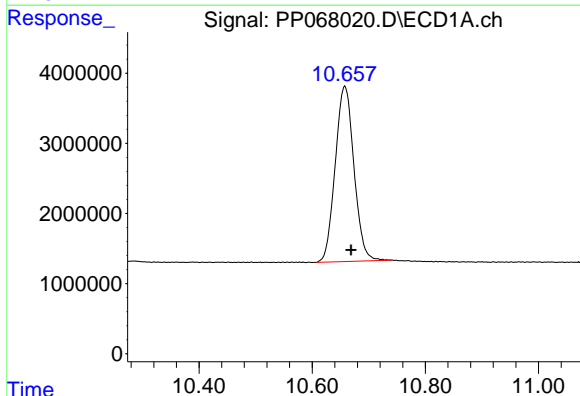
R.T.: 4.750 min
 Delta R.T.: -0.005 min
 Response: 45791365
 Conc: 49.47 ng/ml

Instrument :
 ECD_P
 ClientSampleId :
 AR1248CCC500



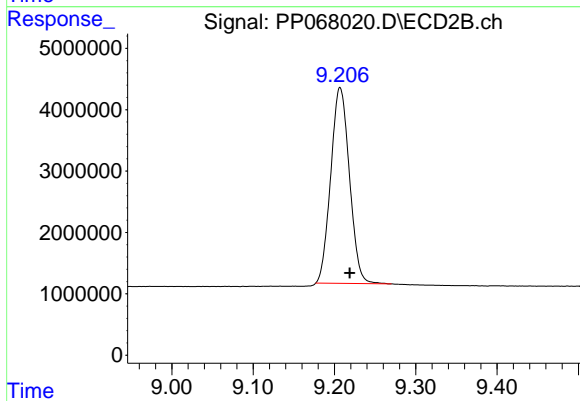
#1 Tetrachloro-m-xylene

R.T.: 4.048 min
 Delta R.T.: -0.004 min
 Response: 47214538
 Conc: 46.73 ng/ml



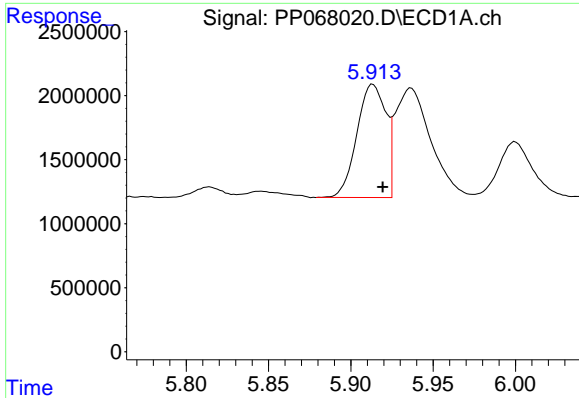
#2 Decachlorobiphenyl

R.T.: 10.658 min
 Delta R.T.: -0.011 min
 Response: 57483303
 Conc: 49.93 ng/ml



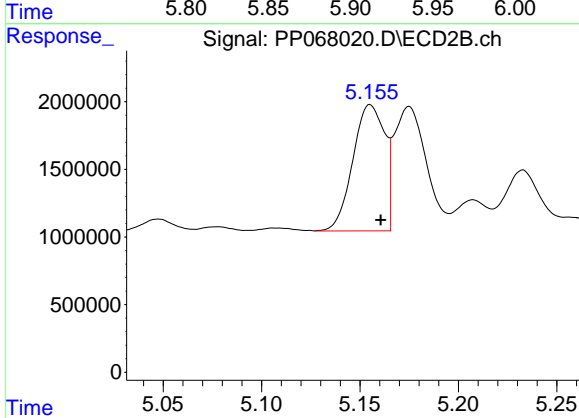
#2 Decachlorobiphenyl

R.T.: 9.207 min
 Delta R.T.: -0.012 min
 Response: 50999866
 Conc: 45.48 ng/ml

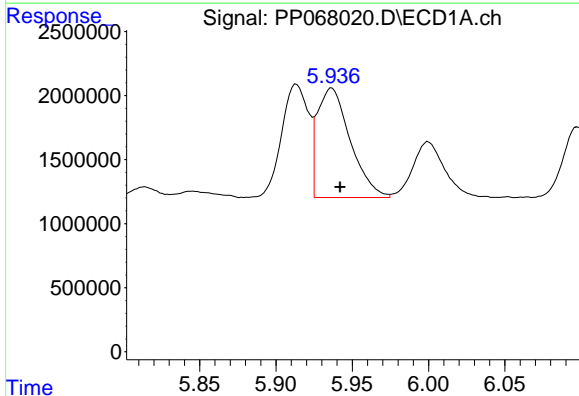


#3 AR-1016-1
 R.T.: 5.913 min
 Delta R.T.: -0.006 min
 Response: 10819387
 Conc: 327.20 ng/ml

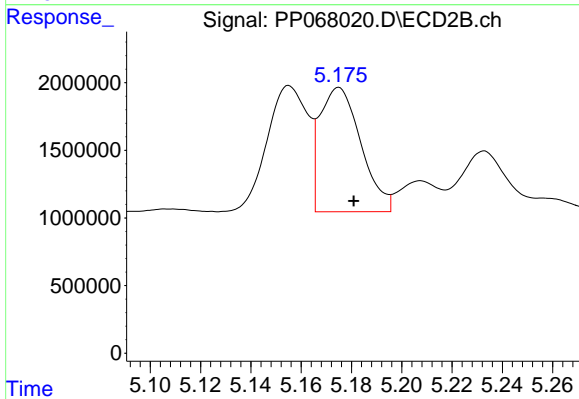
Instrument :
 ECD_P
 ClientSampleId :
 AR1248CCC500



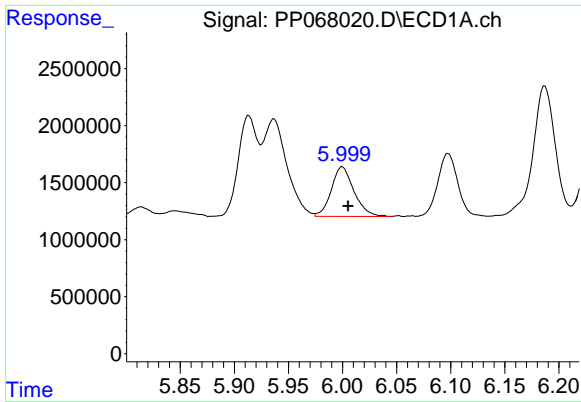
#3 AR-1016-1
 R.T.: 5.155 min
 Delta R.T.: -0.005 min
 Response: 10516241
 Conc: 300.57 ng/ml



#4 AR-1016-2
 R.T.: 5.937 min
 Delta R.T.: -0.005 min
 Response: 12864426
 Conc: 263.77 ng/ml



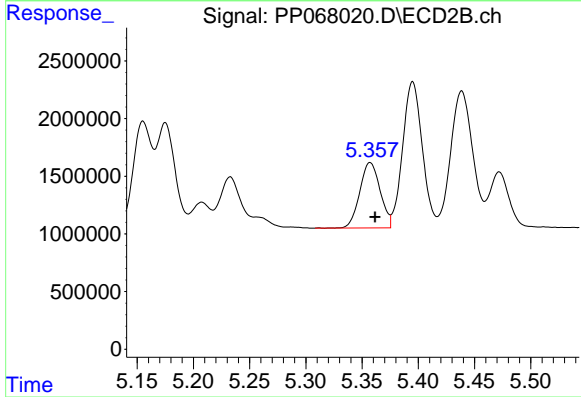
#4 AR-1016-2
 R.T.: 5.175 min
 Delta R.T.: -0.006 min
 Response: 10424745
 Conc: 216.42 ng/ml



#5 AR-1016-3

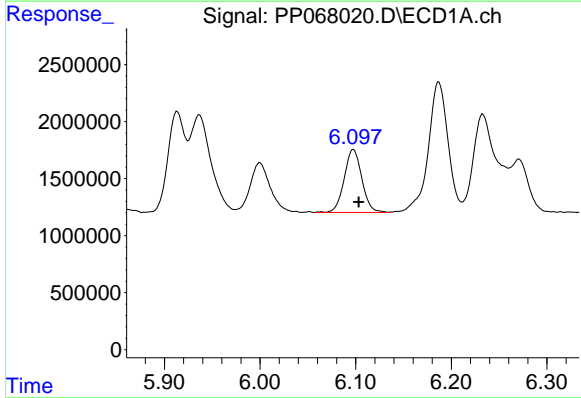
R.T.: 6.000 min
 Delta R.T.: -0.005 min
 Response: 6342733
 Conc: 201.28 ng/ml

Instrument :
 ECD_P
 ClientSampleId :
 AR1248CCC500



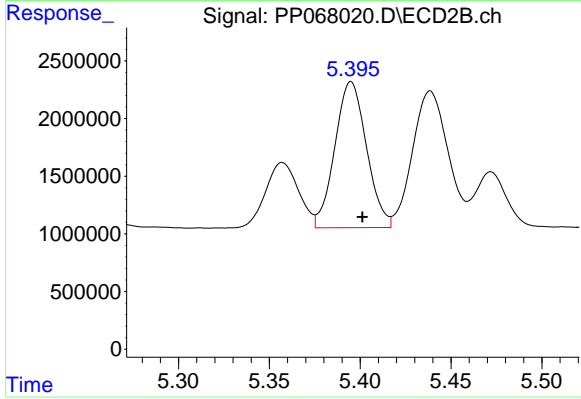
#5 AR-1016-3

R.T.: 5.357 min
 Delta R.T.: -0.004 min
 Response: 7134005
 Conc: 264.84 ng/ml



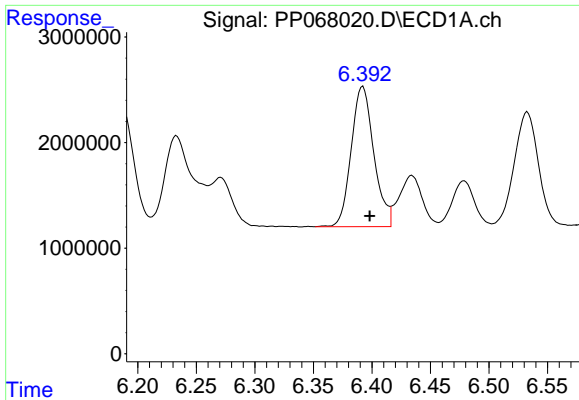
#6 AR-1016-4

R.T.: 6.098 min
 Delta R.T.: -0.006 min
 Response: 7103151
 Conc: 275.92 ng/ml



#6 AR-1016-4

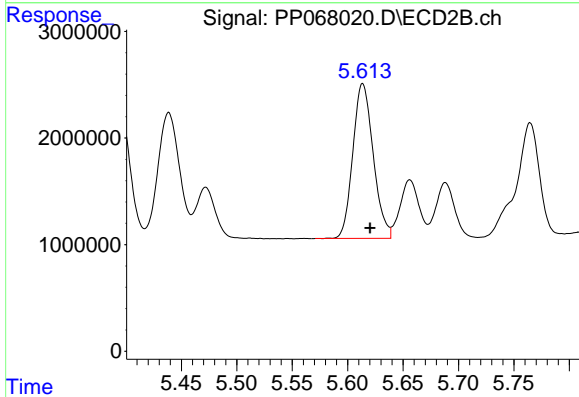
R.T.: 5.395 min
 Delta R.T.: -0.006 min
 Response: 15371238
 Conc: 638.21 ng/ml



#7 AR-1016-5

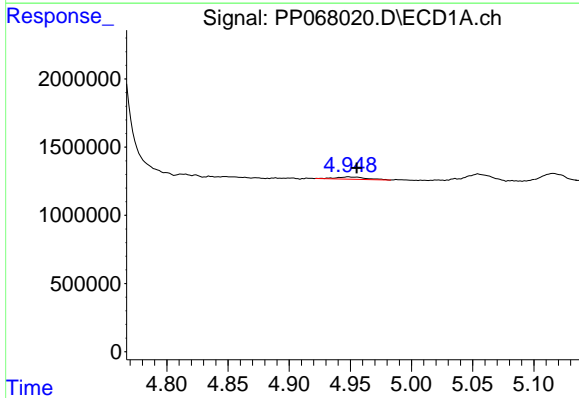
R.T.: 6.392 min
 Delta R.T.: -0.006 min
 Response: 17865863
 Conc: 660.06 ng/ml

Instrument :
 ECD_P
 ClientSampleId :
 AR1248CCC500



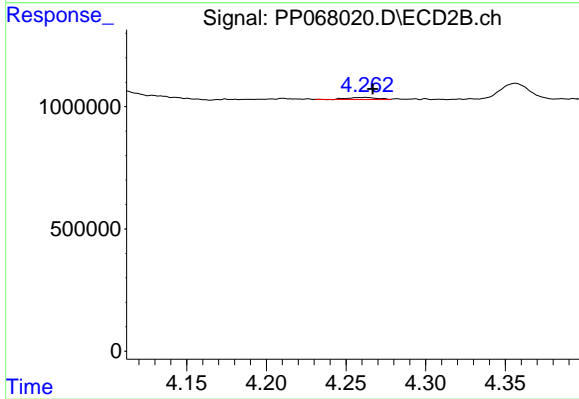
#7 AR-1016-5

R.T.: 5.614 min
 Delta R.T.: -0.007 min
 Response: 18589893
 Conc: 611.31 ng/ml



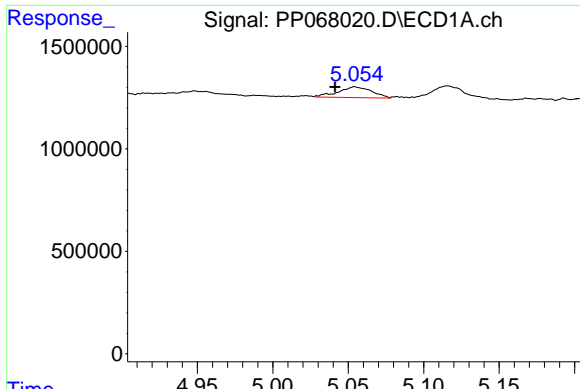
#8 AR-1221-1

R.T.: 4.949 min
 Delta R.T.: -0.007 min
 Response: 305147
 Conc: 23.82 ng/ml



#8 AR-1221-1

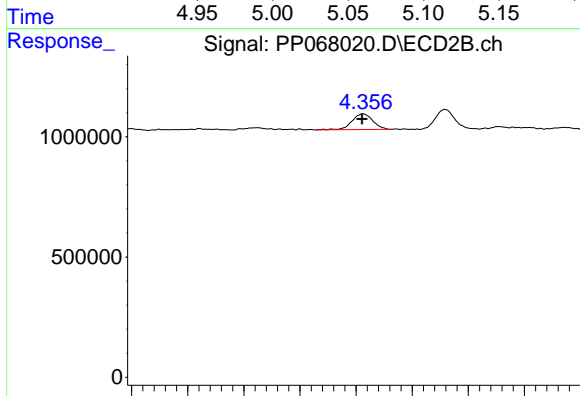
R.T.: 4.262 min
 Delta R.T.: -0.005 min
 Response: 107837
 Conc: 8.19 ng/ml



#9 AR-1221-2

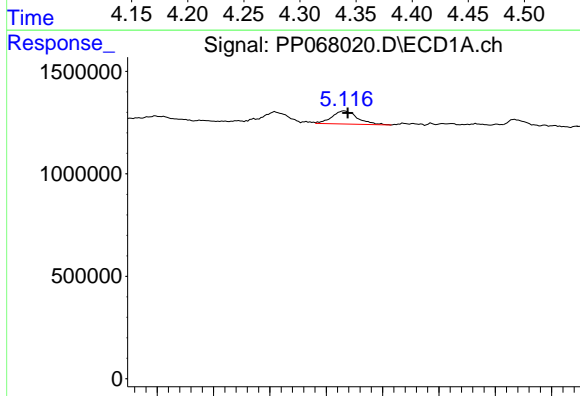
R.T.: 5.055 min
 Delta R.T.: 0.013 min
 Response: 818524
 Conc: 86.52 ng/ml

Instrument :
 ECD_P
 ClientSampleId :
 AR1248CCC500



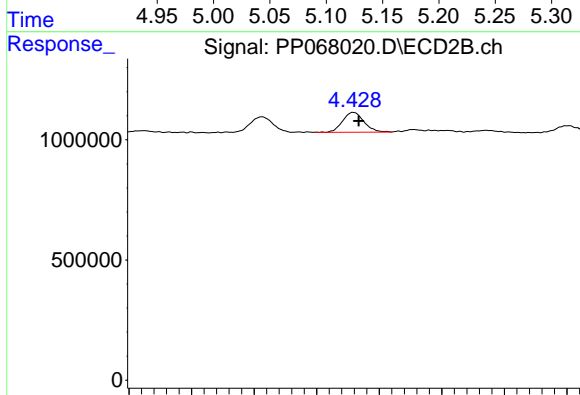
#9 AR-1221-2

R.T.: 4.356 min
 Delta R.T.: 0.000 min
 Response: 838032
 Conc: 84.13 ng/ml



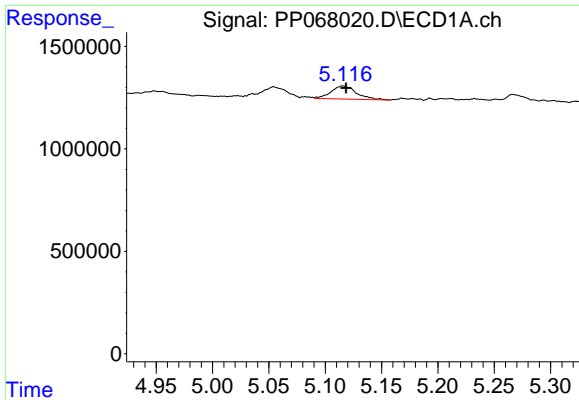
#10 AR-1221-3

R.T.: 5.116 min
 Delta R.T.: -0.003 min
 Response: 1011329
 Conc: 34.98 ng/ml



#10 AR-1221-3

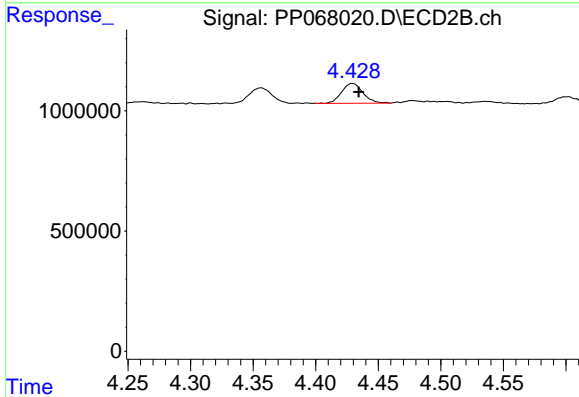
R.T.: 4.429 min
 Delta R.T.: -0.004 min
 Response: 977763
 Conc: 31.41 ng/ml



#11 AR-1232-1

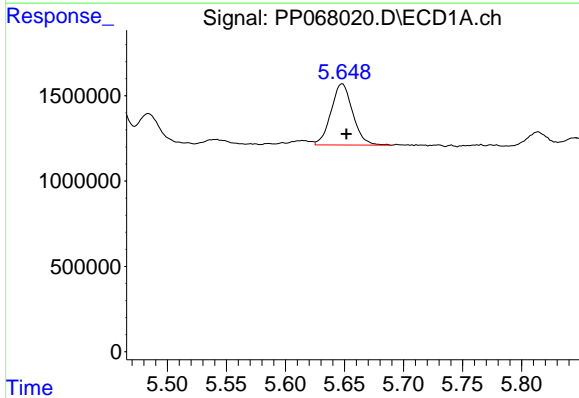
R.T.: 5.116 min
 Delta R.T.: -0.002 min
 Response: 1011329
 Conc: 44.24 ng/ml

Instrument :
 ECD_P
 ClientSampleId :
 AR1248CCC500



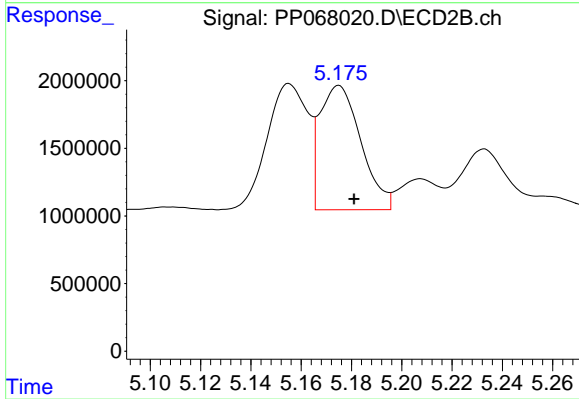
#11 AR-1232-1

R.T.: 4.429 min
 Delta R.T.: -0.005 min
 Response: 977763
 Conc: 40.18 ng/ml



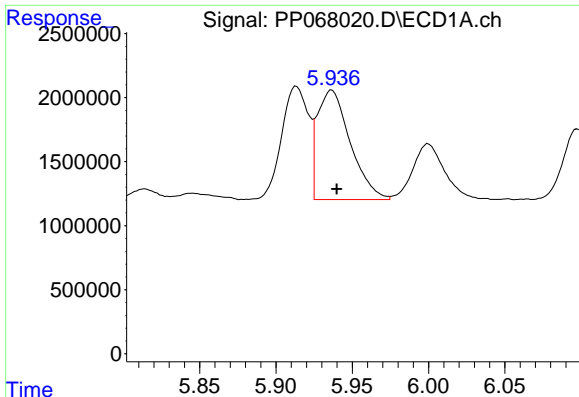
#12 AR-1232-2

R.T.: 5.648 min
 Delta R.T.: -0.003 min
 Response: 4580382
 Conc: 388.73 ng/ml



#12 AR-1232-2

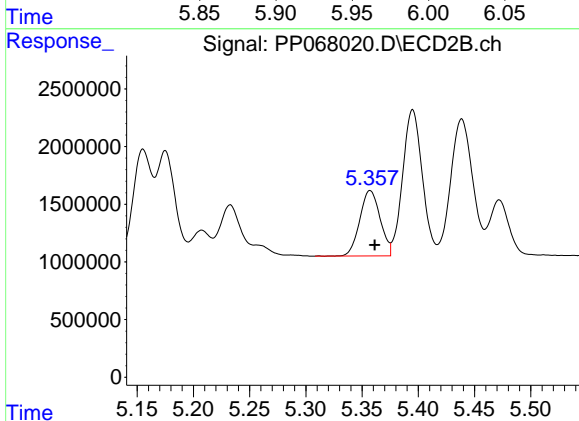
R.T.: 5.175 min
 Delta R.T.: -0.006 min
 Response: 10424745
 Conc: 466.12 ng/ml



#13 AR-1232-3

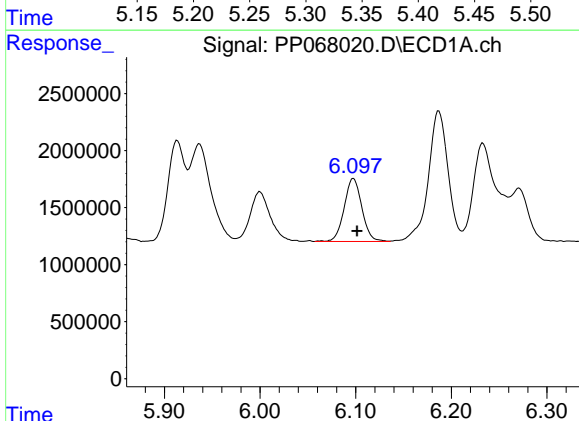
R.T.: 5.937 min
 Delta R.T.: -0.003 min
 Response: 12864426
 Conc: 577.53 ng/ml

Instrument :
 ECD_P
 ClientSampleId :
 AR1248CCC500



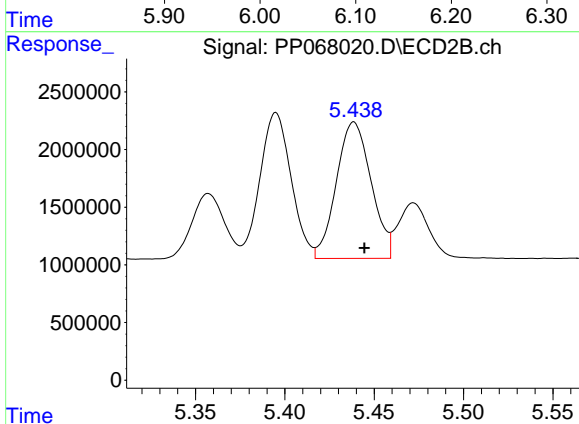
#13 AR-1232-3

R.T.: 5.357 min
 Delta R.T.: -0.004 min
 Response: 7134005
 Conc: 597.30 ng/ml



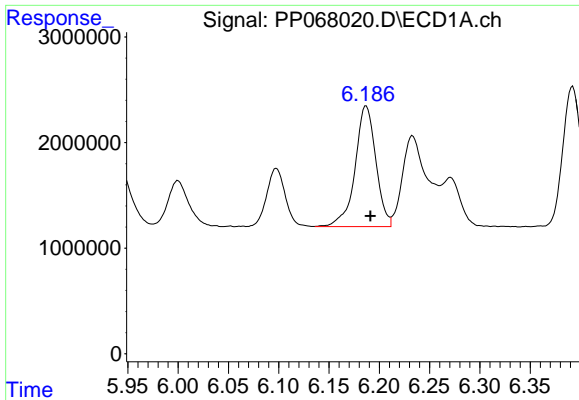
#14 AR-1232-4

R.T.: 6.098 min
 Delta R.T.: -0.004 min
 Response: 7103151
 Conc: 629.30 ng/ml



#14 AR-1232-4

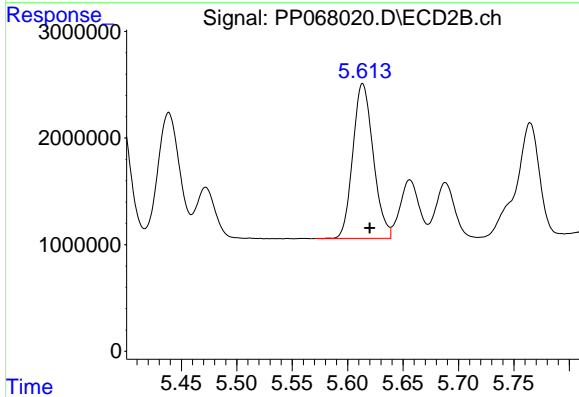
R.T.: 5.439 min
 Delta R.T.: -0.006 min
 Response: 16024035
 Conc: 1389.61 ng/ml



#15 AR-1232-5

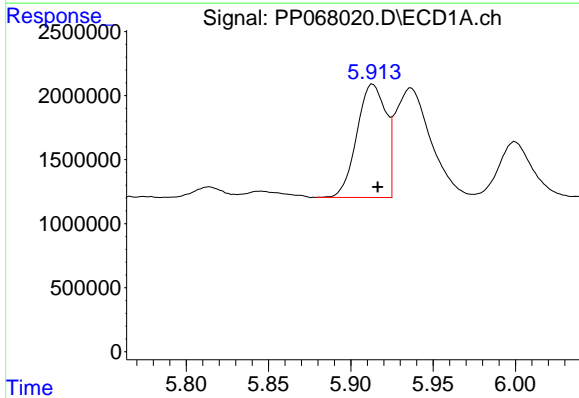
R.T.: 6.187 min
 Delta R.T.: -0.004 min
 Response: 16435262
 Conc: 1802.08 ng/ml

Instrument :
 ECD_P
 ClientSampleId :
 AR1248CCC500



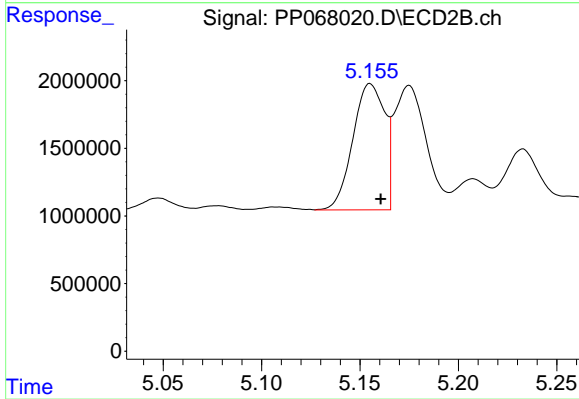
#15 AR-1232-5

R.T.: 5.614 min
 Delta R.T.: -0.006 min
 Response: 18589893
 Conc: 1382.12 ng/ml



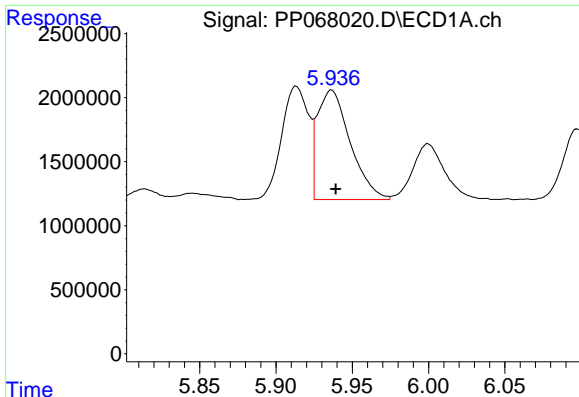
#16 AR-1242-1

R.T.: 5.913 min
 Delta R.T.: -0.003 min
 Response: 10819387
 Conc: 387.28 ng/ml



#16 AR-1242-1

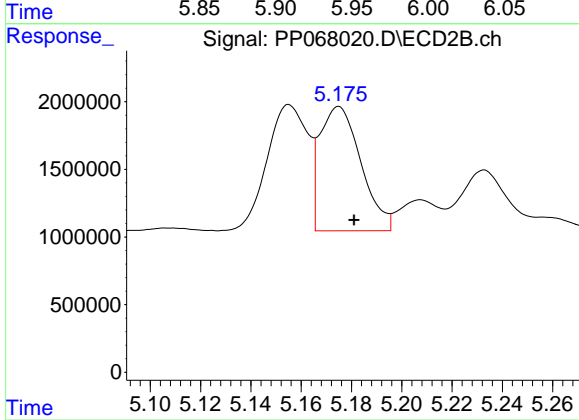
R.T.: 5.155 min
 Delta R.T.: -0.005 min
 Response: 10516241
 Conc: 361.68 ng/ml



#17 AR-1242-2

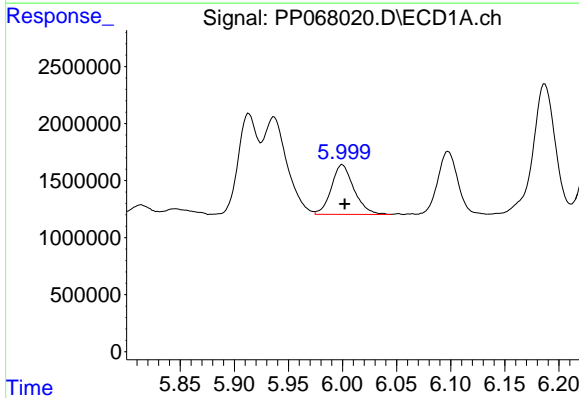
R.T.: 5.937 min
 Delta R.T.: -0.003 min
 Response: 12864426
 Conc: 316.59 ng/ml

Instrument :
 ECD_P
 ClientSampleId :
 AR1248CCC500



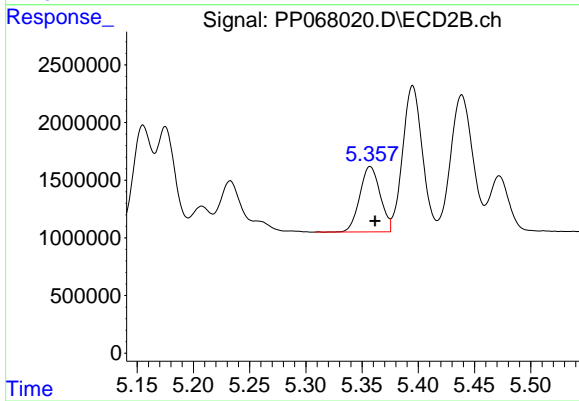
#17 AR-1242-2

R.T.: 5.175 min
 Delta R.T.: -0.006 min
 Response: 10424745
 Conc: 259.66 ng/ml



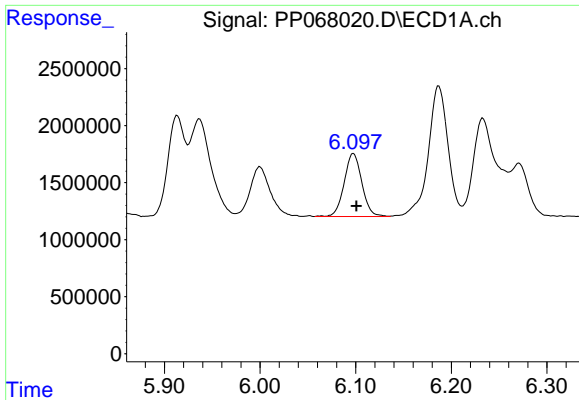
#18 AR-1242-3

R.T.: 6.000 min
 Delta R.T.: -0.002 min
 Response: 6342733
 Conc: 235.22 ng/ml



#18 AR-1242-3

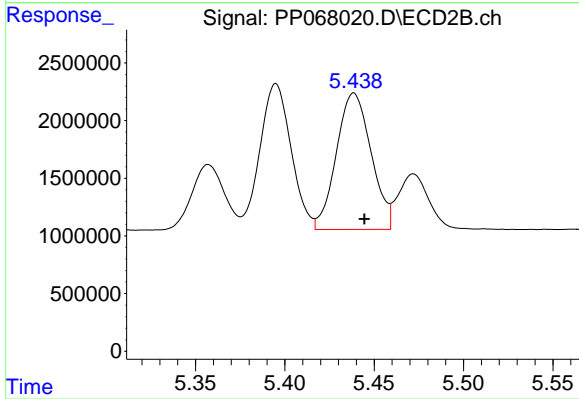
R.T.: 5.357 min
 Delta R.T.: -0.004 min
 Response: 7134005
 Conc: 317.14 ng/ml



#19 AR-1242-4

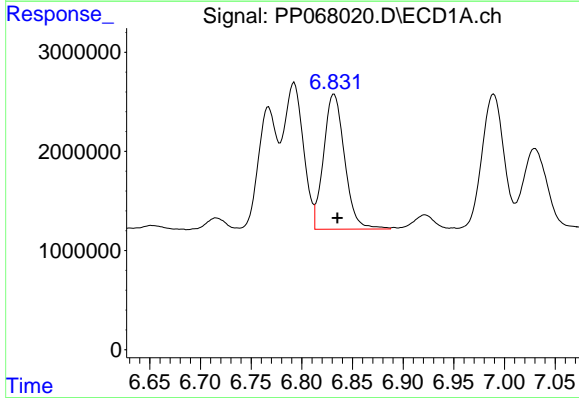
R.T.: 6.098 min
 Delta R.T.: -0.003 min
 Response: 7103151
 Conc: 331.14 ng/ml

Instrument :
 ECD_P
 ClientSampleId :
 AR1248CCC500



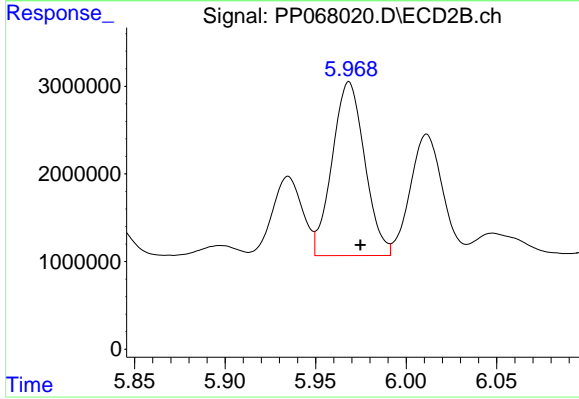
#19 AR-1242-4

R.T.: 5.439 min
 Delta R.T.: -0.006 min
 Response: 16024035
 Conc: 675.05 ng/ml



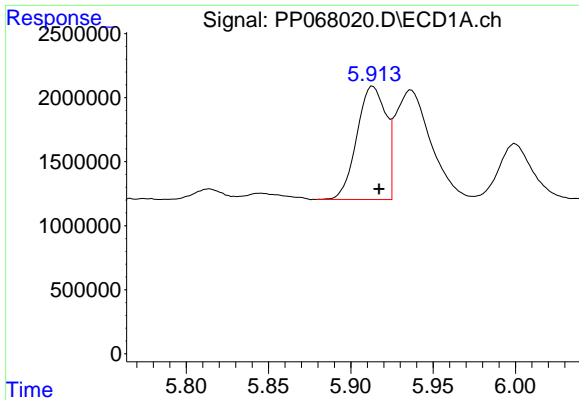
#20 AR-1242-5

R.T.: 6.832 min
 Delta R.T.: -0.003 min
 Response: 19632965
 Conc: 813.77 ng/ml



#20 AR-1242-5

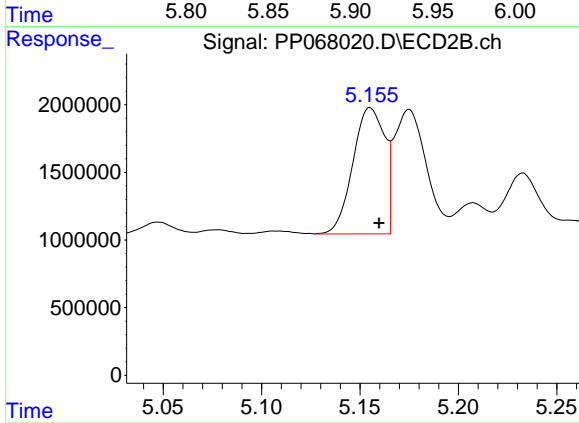
R.T.: 5.968 min
 Delta R.T.: -0.006 min
 Response: 24786712
 Conc: 865.17 ng/ml



#21 AR-1248-1

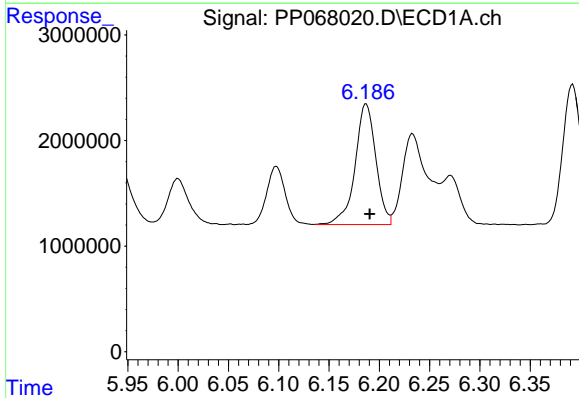
R.T.: 5.913 min
 Delta R.T.: -0.004 min
 Response: 10819387
 Conc: 505.04 ng/ml

Instrument :
 ECD_P
 ClientSampleId :
 AR1248CCC500



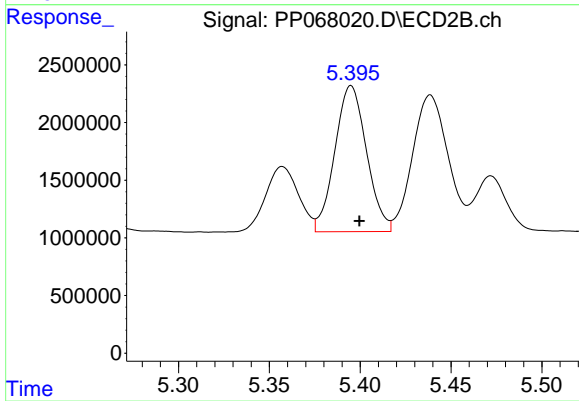
#21 AR-1248-1

R.T.: 5.155 min
 Delta R.T.: -0.004 min
 Response: 10516241
 Conc: 464.01 ng/ml



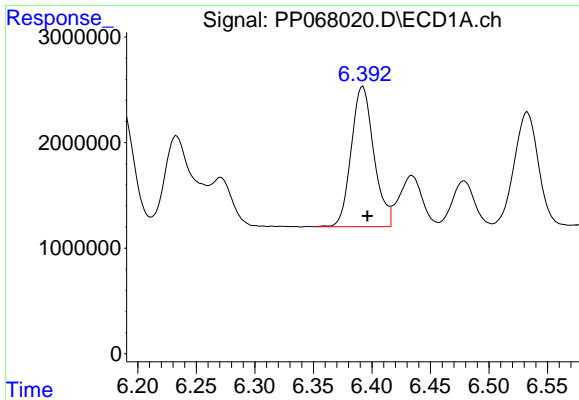
#22 AR-1248-2

R.T.: 6.187 min
 Delta R.T.: -0.004 min
 Response: 16435262
 Conc: 488.90 ng/ml



#22 AR-1248-2

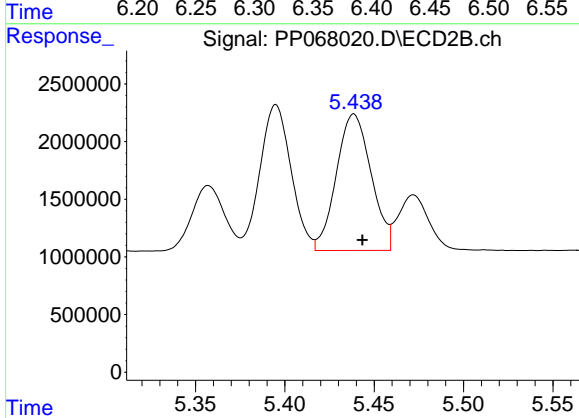
R.T.: 5.395 min
 Delta R.T.: -0.005 min
 Response: 15371238
 Conc: 464.45 ng/ml



#23 AR-1248-3

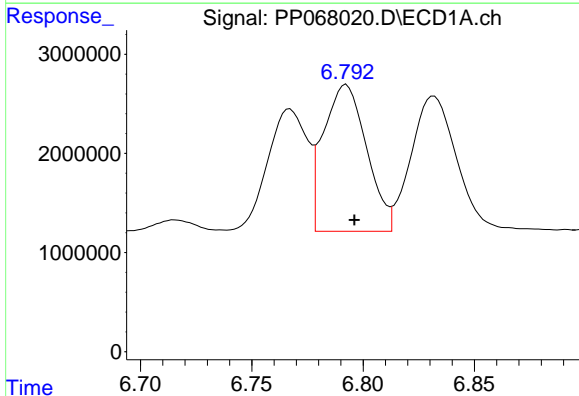
R.T.: 6.392 min
 Delta R.T.: -0.004 min
 Response: 17865863
 Conc: 487.80 ng/ml

Instrument :
 ECD_P
 ClientSampleId :
 AR1248CCC500



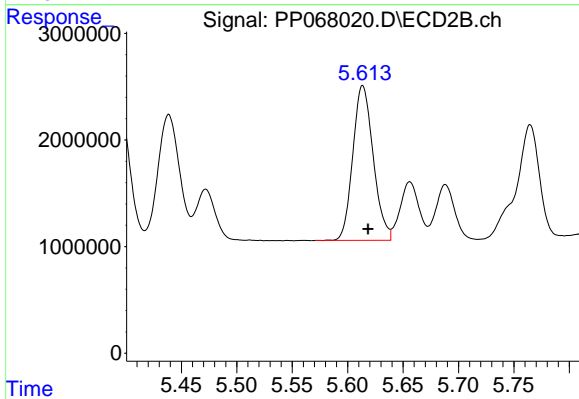
#23 AR-1248-3

R.T.: 5.439 min
 Delta R.T.: -0.005 min
 Response: 16024035
 Conc: 464.81 ng/ml



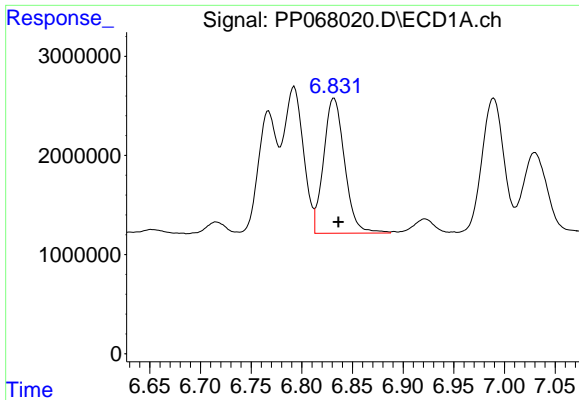
#24 AR-1248-4

R.T.: 6.792 min
 Delta R.T.: -0.004 min
 Response: 19923421
 Conc: 492.54 ng/ml



#24 AR-1248-4

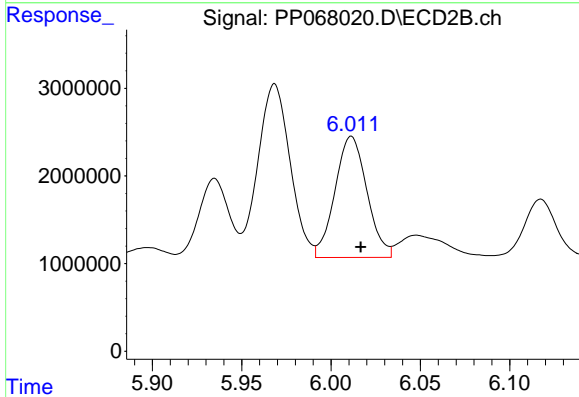
R.T.: 5.614 min
 Delta R.T.: -0.005 min
 Response: 18589893
 Conc: 453.90 ng/ml



#25 AR-1248-5

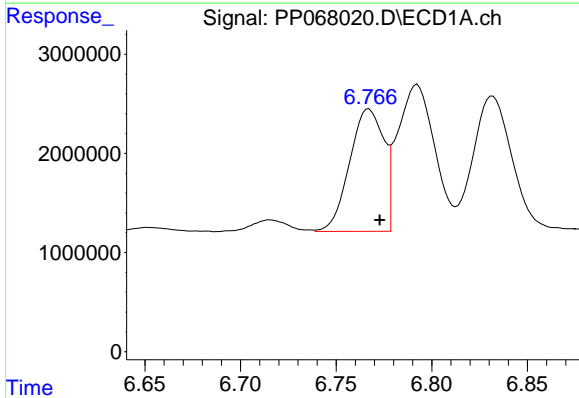
R.T.: 6.832 min
 Delta R.T.: -0.004 min
 Response: 19632965
 Conc: 495.02 ng/ml

Instrument :
 ECD_P
 ClientSampleId :
 AR1248CCC500



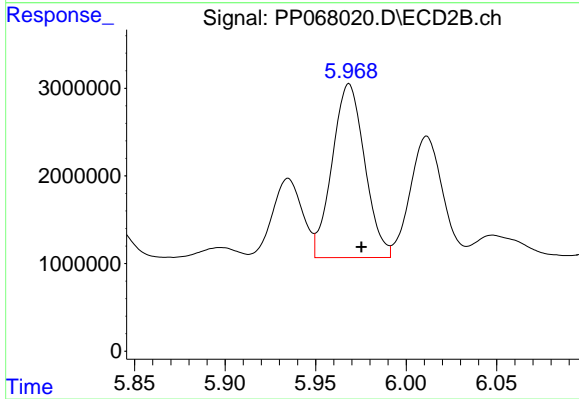
#25 AR-1248-5

R.T.: 6.011 min
 Delta R.T.: -0.005 min
 Response: 17231251
 Conc: 460.20 ng/ml



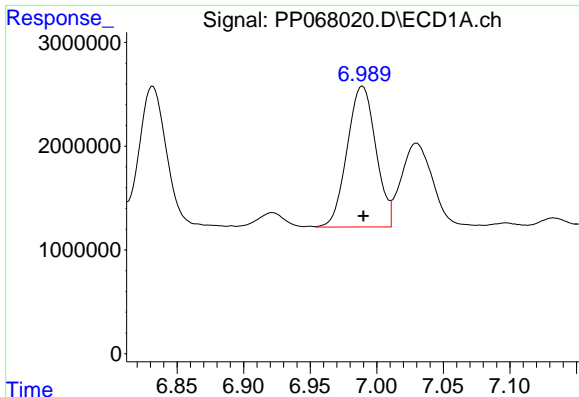
#26 AR-1254-1

R.T.: 6.767 min
 Delta R.T.: -0.006 min
 Response: 15351108
 Conc: 342.79 ng/ml



#26 AR-1254-1

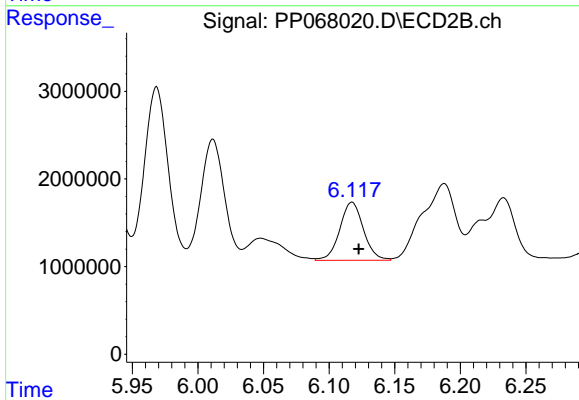
R.T.: 5.968 min
 Delta R.T.: -0.007 min
 Response: 24786712
 Conc: 419.52 ng/ml



#27 AR-1254-2

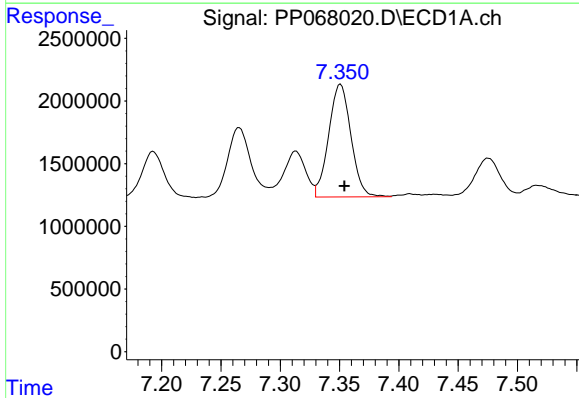
R.T.: 6.989 min
 Delta R.T.: 0.000 min
 Response: 20328391
 Conc: 307.55 ng/ml

Instrument :
 ECD_P
 ClientSampleId :
 AR1248CCC500



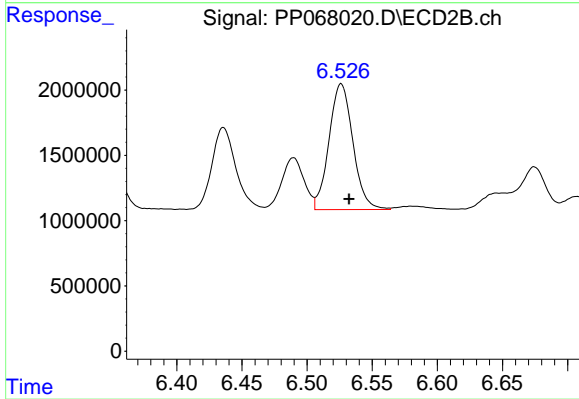
#27 AR-1254-2

R.T.: 6.117 min
 Delta R.T.: -0.005 min
 Response: 8313661
 Conc: 158.46 ng/ml



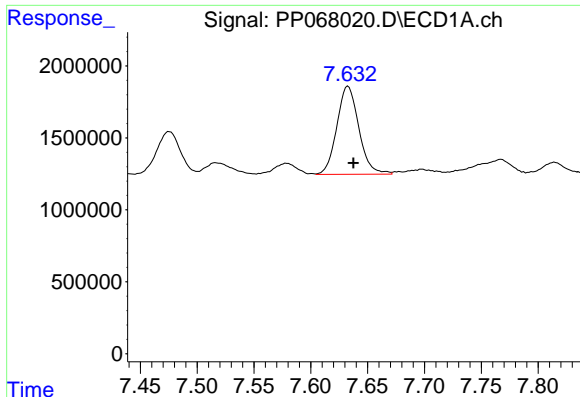
#28 AR-1254-3

R.T.: 7.351 min
 Delta R.T.: -0.003 min
 Response: 11752339
 Conc: 169.21 ng/ml



#28 AR-1254-3

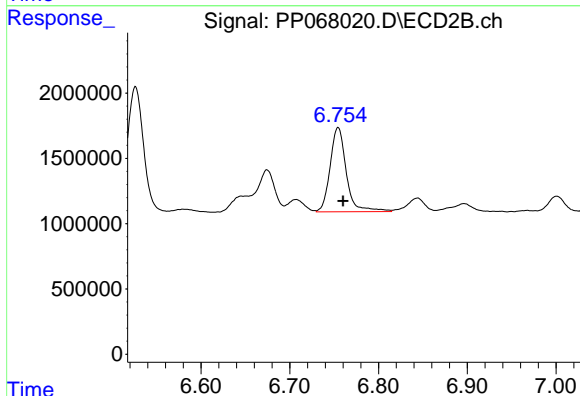
R.T.: 6.526 min
 Delta R.T.: -0.006 min
 Response: 12316903
 Conc: 148.03 ng/ml



#29 AR-1254-4

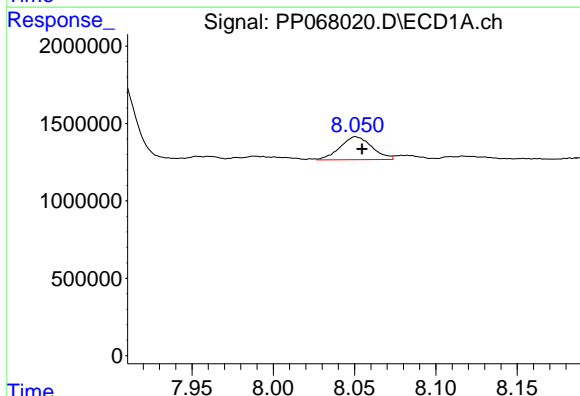
R.T.: 7.633 min
 Delta R.T.: -0.005 min
 Response: 8249249
 Conc: 165.30 ng/ml

Instrument :
 ECD_P
 ClientSampleId :
 AR1248CCC500



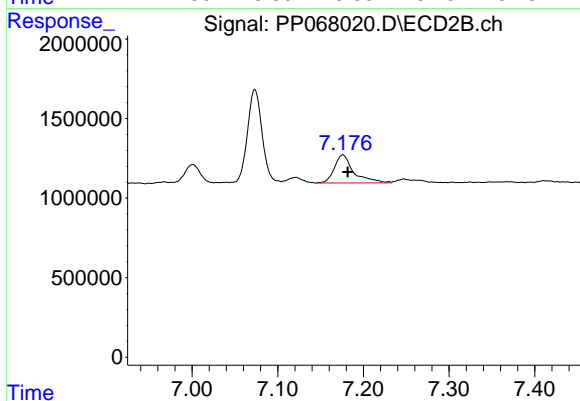
#29 AR-1254-4

R.T.: 6.755 min
 Delta R.T.: -0.005 min
 Response: 8191321
 Conc: 169.68 ng/ml



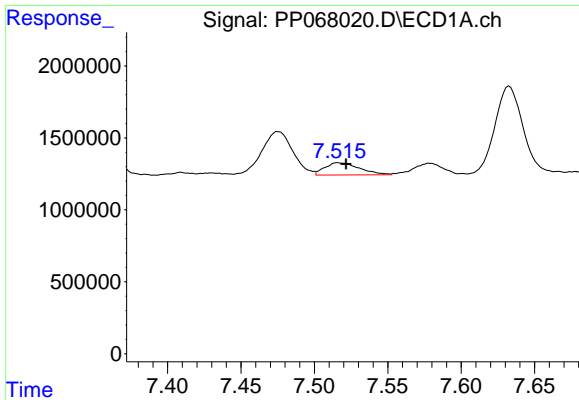
#30 AR-1254-5

R.T.: 8.051 min
 Delta R.T.: -0.004 min
 Response: 2014154
 Conc: 33.97 ng/ml



#30 AR-1254-5

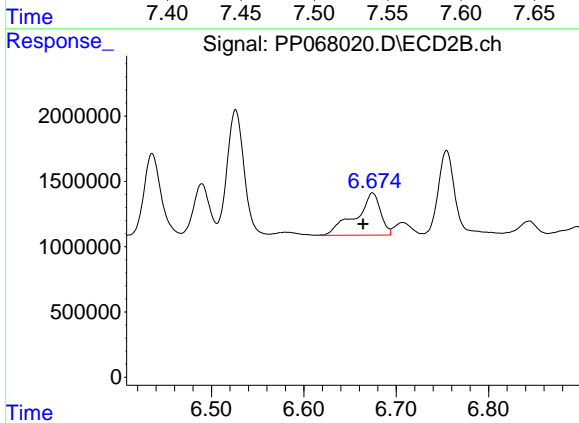
R.T.: 7.176 min
 Delta R.T.: -0.006 min
 Response: 2755692
 Conc: 37.47 ng/ml



#31 AR-1260-1

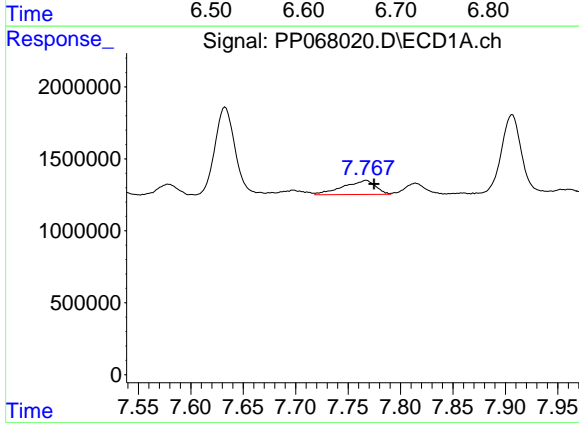
R.T.: 7.516 min
 Delta R.T.: -0.005 min
 Response: 1408075
 Conc: 26.06 ng/ml

Instrument :
 ECD_P
 ClientSampleId :
 AR1248CCC500



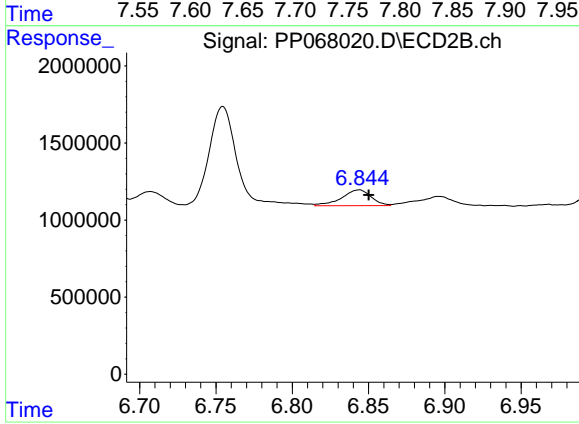
#31 AR-1260-1

R.T.: 6.674 min
 Delta R.T.: 0.010 min
 Response: 6042059
 Conc: 106.07 ng/ml



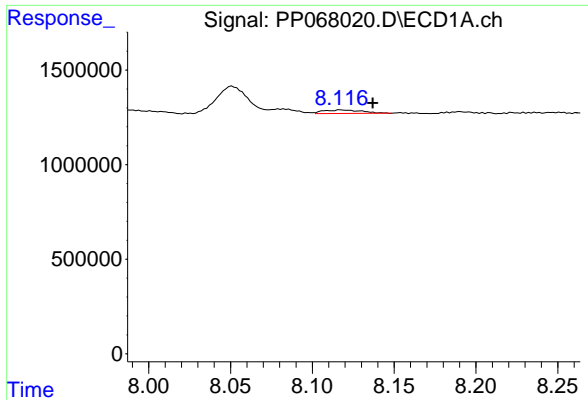
#32 AR-1260-2

R.T.: 7.767 min
 Delta R.T.: -0.007 min
 Response: 2106846
 Conc: 33.30 ng/ml



#32 AR-1260-2

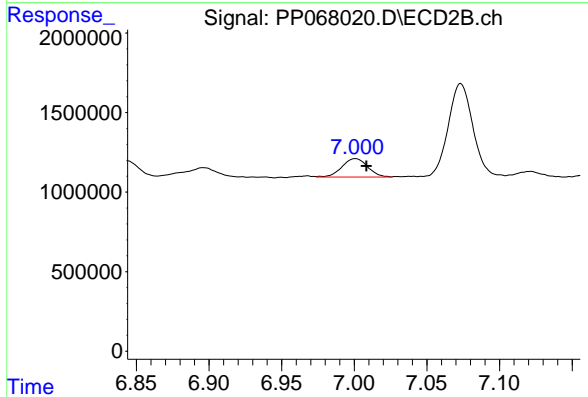
R.T.: 6.844 min
 Delta R.T.: -0.006 min
 Response: 1381243
 Conc: 20.71 ng/ml



#33 AR-1260-3

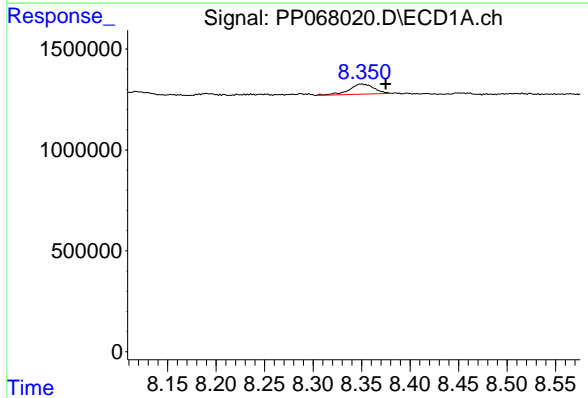
R.T.: 8.117 min
 Delta R.T.: -0.020 min
 Response: 307328
 Conc: 5.93 ng/ml

Instrument :
 ECD_P
 ClientSampleId :
 AR1248CCC500



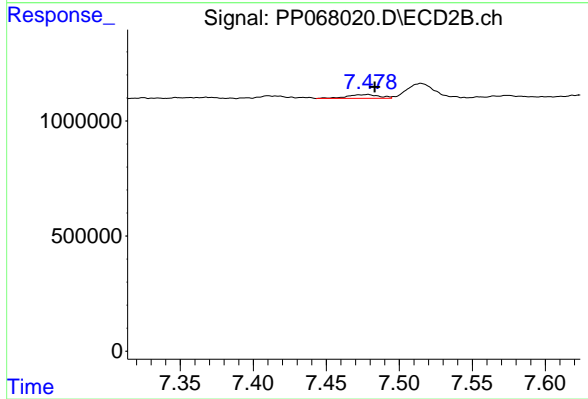
#33 AR-1260-3

R.T.: 7.001 min
 Delta R.T.: -0.007 min
 Response: 1423897
 Conc: 22.35 ng/ml



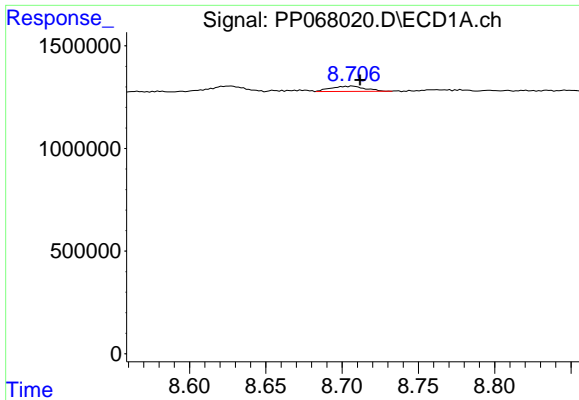
#34 AR-1260-4

R.T.: 8.350 min
 Delta R.T.: -0.025 min
 Response: 895411
 Conc: 14.88 ng/ml



#34 AR-1260-4

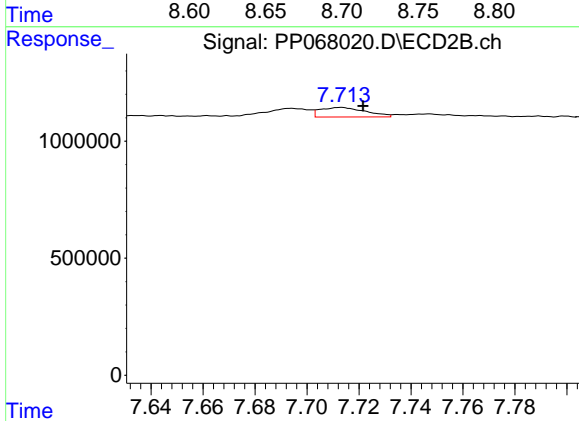
R.T.: 7.478 min
 Delta R.T.: -0.005 min
 Response: 252996
 Conc: 4.58 ng/ml



#35 AR-1260-5

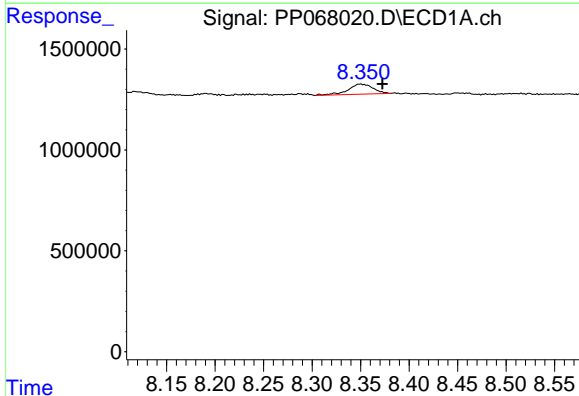
R.T.: 8.707 min
 Delta R.T.: -0.005 min
 Response: 399000
 Conc: 3.70 ng/ml

Instrument :
 ECD_P
 ClientSampleId :
 AR1248CCC500



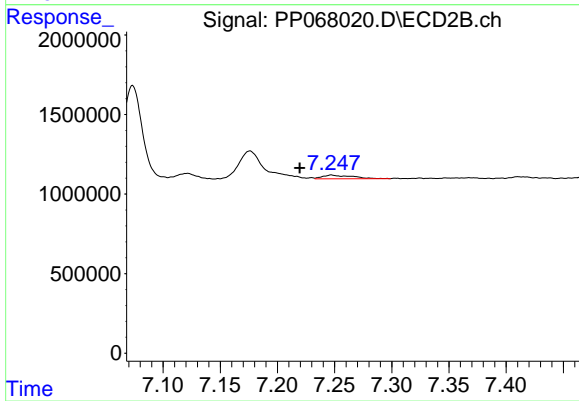
#35 AR-1260-5

R.T.: 7.713 min
 Delta R.T.: -0.009 min
 Response: 498437
 Conc: 4.08 ng/ml



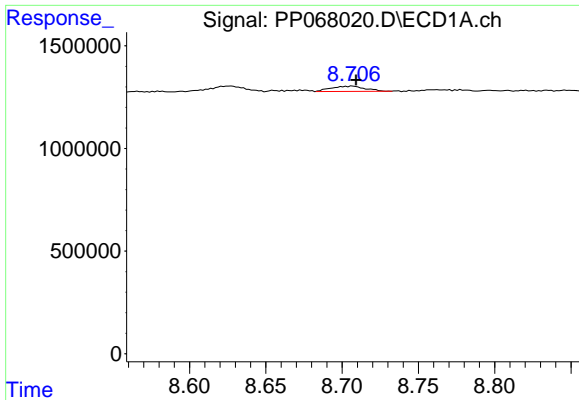
#36 AR-1262-1

R.T.: 8.350 min
 Delta R.T.: -0.023 min
 Response: 895411
 Conc: 12.48 ng/ml



#36 AR-1262-1

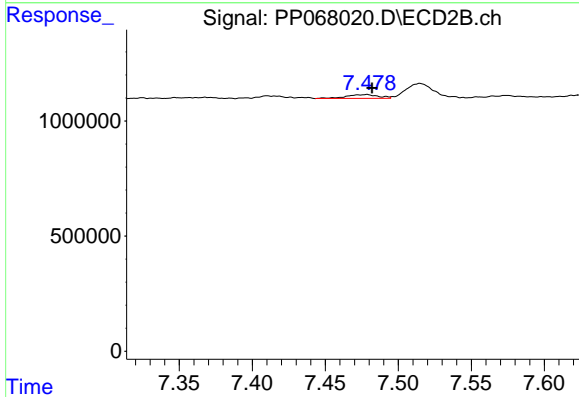
R.T.: 7.247 min
 Delta R.T.: 0.028 min
 Response: 422220
 Conc: 5.37 ng/ml



#37 AR-1262-2

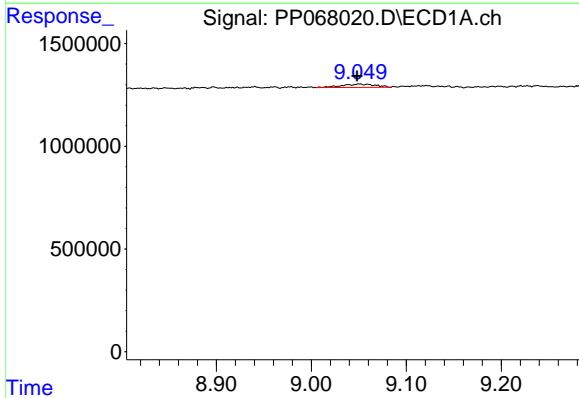
R.T.: 8.707 min
 Delta R.T.: -0.002 min
 Response: 399000
 Conc: 3.28 ng/ml

Instrument :
 ECD_P
 ClientSampleId :
 AR1248CCC500



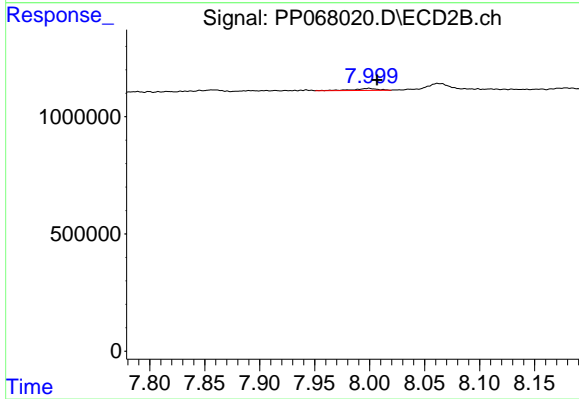
#37 AR-1262-2

R.T.: 7.478 min
 Delta R.T.: -0.004 min
 Response: 252996
 Conc: 3.57 ng/ml



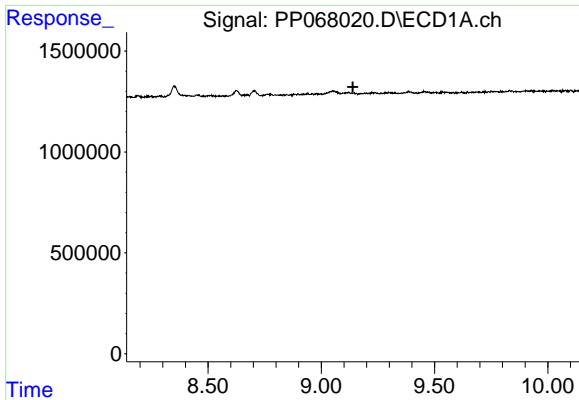
#38 AR-1262-3

R.T.: 9.051 min
 Delta R.T.: 0.003 min
 Response: 396024
 Conc: 4.47 ng/ml



#38 AR-1262-3

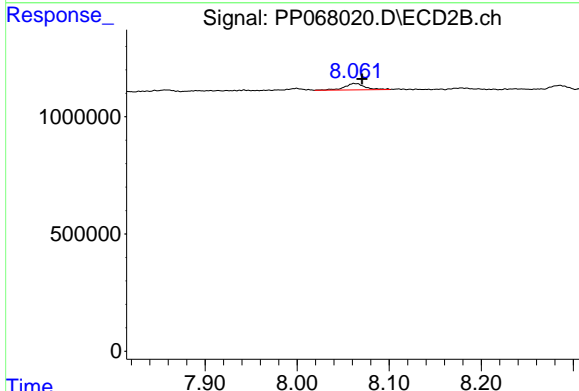
R.T.: 7.999 min
 Delta R.T.: -0.008 min
 Response: 121361
 Conc: 2.13 ng/ml



#39 AR-1262-4

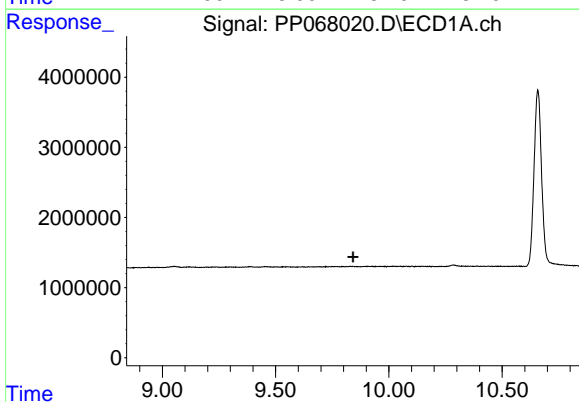
R.T.: 0.000 min
 Exp R.T.: 9.140 min
 Response: 0
 Conc: N.D.

Instrument : ECD_P
 ClientSampleId : AR1248CCC500



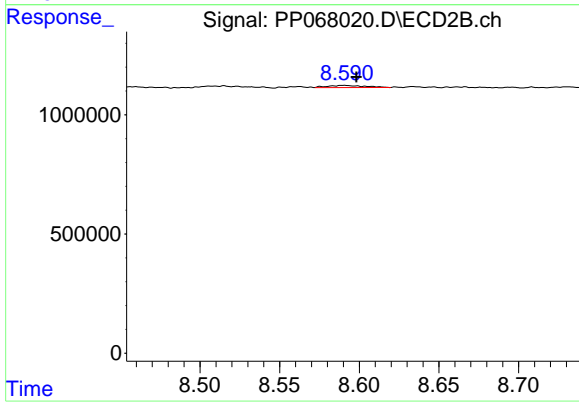
#39 AR-1262-4

R.T.: 8.062 min
 Delta R.T.: -0.008 min
 Response: 417183
 Conc: 4.15 ng/ml



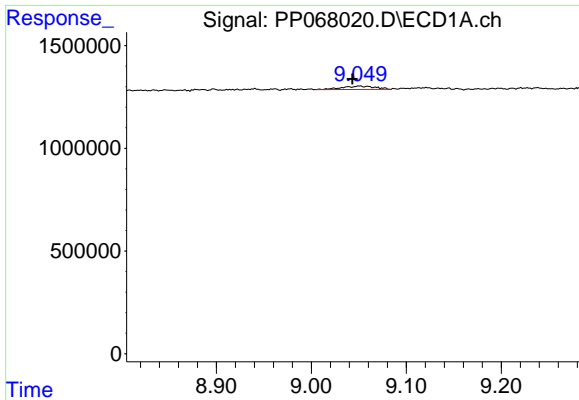
#40 AR-1262-5

R.T.: 0.000 min
 Exp R.T.: 9.842 min
 Response: 0
 Conc: N.D.



#40 AR-1262-5

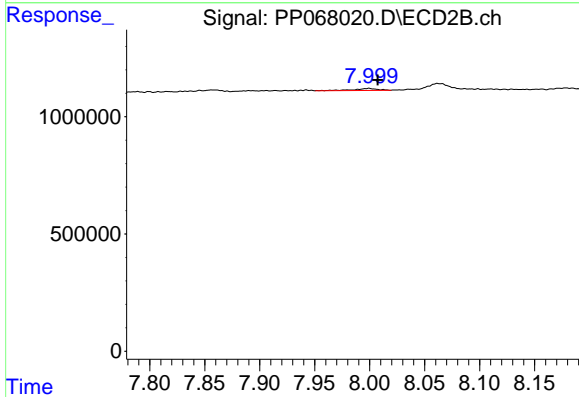
R.T.: 8.590 min
 Delta R.T.: -0.008 min
 Response: 145424
 Conc: 2.91 ng/ml



#41 AR-1268-1

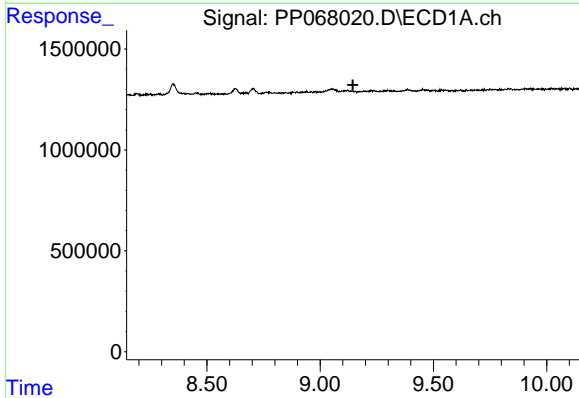
R.T.: 9.051 min
 Delta R.T.: 0.008 min
 Response: 396024
 Conc: 2.59 ng/ml

Instrument :
 ECD_P
 ClientSampleId :
 AR1248CCC500



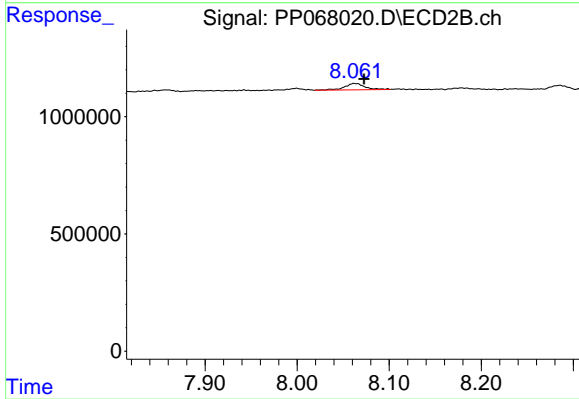
#41 AR-1268-1

R.T.: 7.999 min
 Delta R.T.: -0.008 min
 Response: 121361
 Conc: 0.76 ng/ml



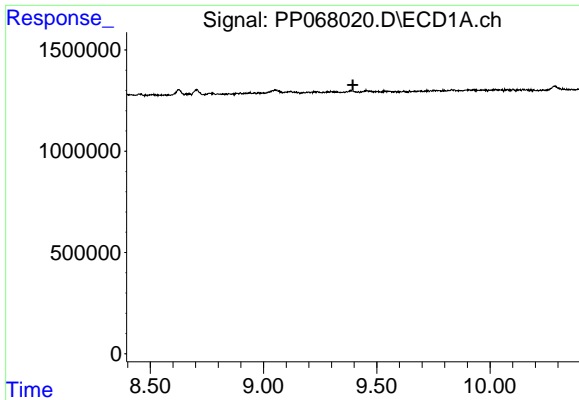
#42 AR-1268-2

R.T.: 0.000 min
 Exp R.T. : 9.144 min
 Response: 0
 Conc: N.D.



#42 AR-1268-2

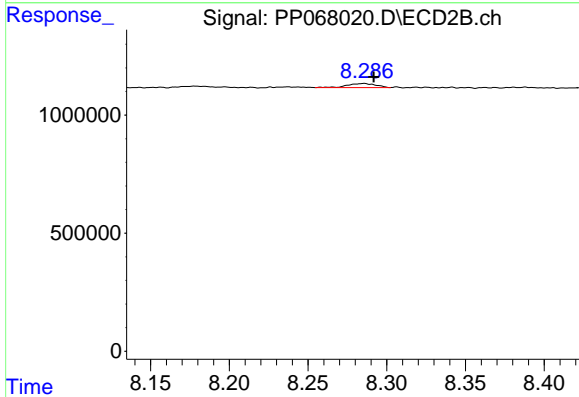
R.T.: 8.062 min
 Delta R.T.: -0.011 min
 Response: 417183
 Conc: 2.91 ng/ml



#43 AR-1268-3

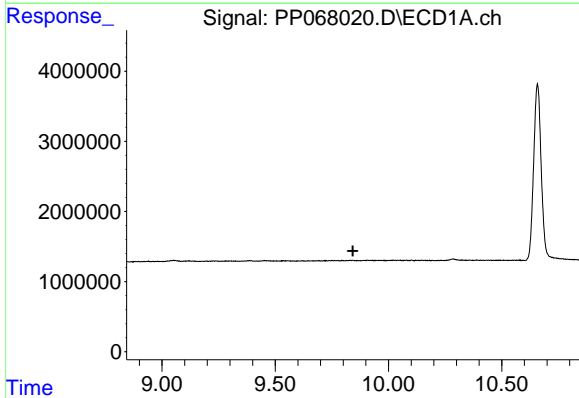
R.T.: 0.000 min
 Exp R.T.: 9.395 min
 Response: 0
 Conc: N.D.

Instrument : ECD_P
 ClientSampleId : AR1248CCC500



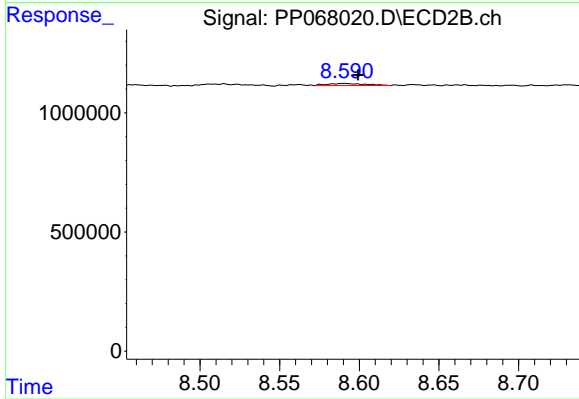
#43 AR-1268-3

R.T.: 8.285 min
 Delta R.T.: -0.006 min
 Response: 218555
 Conc: 1.71 ng/ml



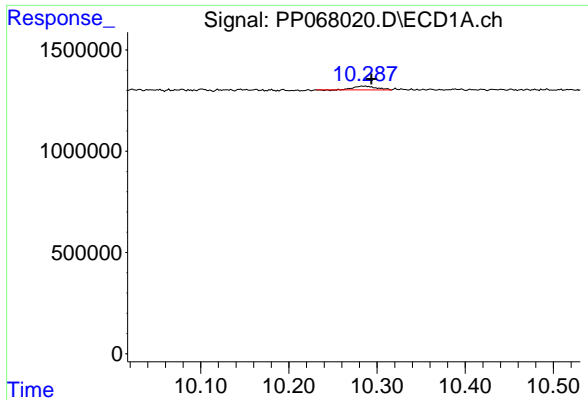
#44 AR-1268-4

R.T.: 0.000 min
 Exp R.T.: 9.843 min
 Response: 0
 Conc: N.D.



#44 AR-1268-4

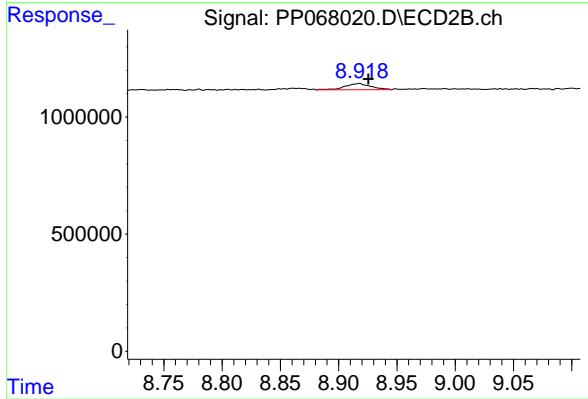
R.T.: 8.590 min
 Delta R.T.: -0.009 min
 Response: 145424
 Conc: 2.57 ng/ml



#45 AR-1268-5

R.T.: 10.287 min
 Delta R.T.: -0.007 min
 Response: 309288
 Conc: 0.83 ng/ml

Instrument :
 ECD_P
 ClientSampleId :
 AR1248CCC500



#45 AR-1268-5

R.T.: 8.918 min
 Delta R.T.: -0.008 min
 Response: 409036
 Conc: 1.08 ng/ml